



2022 Survey of Disability, Ageing and Carers

What we learned

Easy Read version



How to use this fact sheet



The Australian Bureau of Statistics (ABS) wrote this fact sheet.

When you see the words 'we', it means the ABS.



We wrote this fact sheet in an easy to read way.

We use pictures to explain some ideas.

Bold
Not bold

We wrote some important words in **bold**.

This means the letters are thicker and darker.



We explain what these words mean.

There is a list of these words on page 16.



This is an Easy Read summary of another fact sheet.

This means it only includes the most important ideas.



You can find the other fact sheet on our website.

www.abs.gov.au/statistics/health/disability/disability-ageing-and-carers-australia-summary-findings/2022



We also wrote a plain language version of the other fact sheet.

You can find it on our website.

www.abs.gov.au/statistics/health/disability/disability-ageing-and-carers-australia-summary-findings/2022/key-findings-plain-language



You can ask for help to read this fact sheet.

A friend, family member or support person might be able to help you.

What's in this fact sheet?

About this fact sheet 5

What we learned about people with disability 6

What we learned about older people 10

What we learned about carers 13

Word list 16

Contact us 17

About this fact sheet

In 2022, we shared a survey to learn more about:



- people with disability



- older people



- carers.



In this fact sheet, we share some important information that we learned.



We also explain how some of this information is different to what we learned in our 2018 survey.

What we learned about people with disability

2022



In 2022, we learned that **over 21%** of Australians had disability.

This is **5.5 million** people.

2018



In 2018, we learned that **nearly 18%** of Australians had disability.

This is **4.4 million** people.



This means there were **1.1 million** more people with disability in Australia in 2022.



In 2022, we learned that:

- **nearly 22%** of females had disability
- **21%** of males had disability.



We learned that **1 in 7** people under 65 years old had disability.



We learned that **1 in 2** people over 65 years old had disability.

We learned that **nearly 8%** of Australians had:



- **severe disability** – when someone needs help some of the time
- or
- **profound disability** – when someone needs help all of the time.

We learned that **nearly 97%** of Australians with disability lived in private homes.



For example:

- a house
- an apartment.

We learned that **over 3%** of Australians with disability lived in places where they received daily care.



For example, a:

- hospital
- nursing home.

We also learned more about Australians with disability who:



- were over 15 years old
- lived in a private home.



We learned that **nearly 64%** of people from this group said they were happy with how often they took part in social activities in the last 3 months.



We also learned that **over 45%** of people from this group had finished year 12.



This is more people than in 2018.



In 2018, we learned that just **over 33%** of people from this group had finished year 12.

What we learned about older people



Older people are Australians who are 65 years or older.



In 2022, we learned that **over 17%** of Australians were older people.

This is **4.4 million** people.



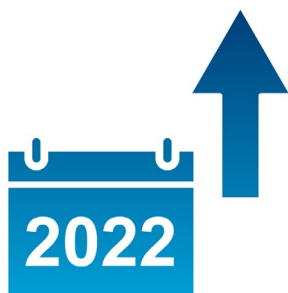
In 2018, we learned that **nearly 16%** of Australians were older people.

This is **3.9 million** people.

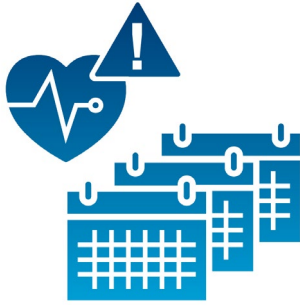


In 2022, we learned that **over 52%** of older people had disability.

In 2018, we learned that **nearly 50%** of older people had disability.



This means there were **347,000 more** older people with disability in Australia in 2022.



In 2022, we learned that **nearly 87%** of older people had at least one health problem that would last a long time.



We learned that **nearly 96%** of older people were living in a private home.



We learned that **over 4%** of older people were living in places where they received daily care.

For example, a:

- hospital
- nursing home.



We learned that **nearly 40%** of older people who were living at home needed support with daily activities.

For example, cooking a meal.

This is **1.7 million** people.



We collected information about older Australians who took part in social activities over the last 3 months.



We learned that **nearly 78%** of older Australians were happy with how often they took part in social activities.

What we learned about carers



In 2022, we learned that **nearly 12%** of Australians living in private homes were also carers.

This is **3 million** people.



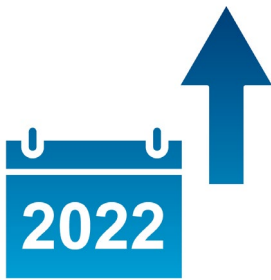
We learned that:

- **nearly 13%** of women and girls were carers
- **over 11%** of men and boys were carers.



In 2022, we learned that **over 391,000** carers were under 25 years old.

In 2018, we learned that **over 235,000** carers were under 25 years old.



This means there were **156,000 more** carers under 25 years old in Australia in 2022.

In 2022, we learned that **1.2 million** people in Australia were **primary carers**.



A primary carer is:

- the main person who supports someone and
- 15 years or older.



We learned that **nearly 44%** of primary carers were also people with disability.



We asked people why they became primary carers.



We learned that **nearly 65%** of people became primary carers because they felt like they needed to look after their family.



We learned that **over 72%** of primary carers took part in social activities at least once a week.

Word list

Primary carers



A primary carer is:

- the main person who supports someone
and
- 15 years or older.



Severe disability

Severe disability is when someone needs help most of the time



Profound disability

Profound disability is when someone needs help all of the time.

Contact us



You can send us an email.

disability.statistics@abs.gov.au



You can call us.

1300 135 070



The Information Access Group created this Easy Read fact sheet using stock photography and custom images.

The images may not be reused without permission.

For any enquiries about the images, please visit

www.informationaccessgroup.com.

Quote job number 5730-B.



www.abs.gov.au