




Lyons

The ABS provides detailed statistics for every Commonwealth Electorate. The date of the next Census of Population and Housing is 9 August 2016, with results available from mid-2017.

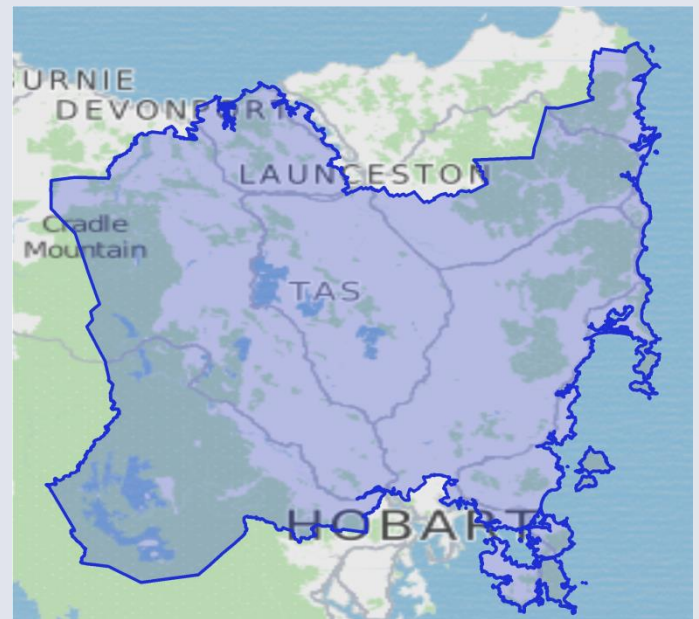
	Population (ERP*)	104,575
	Male	51%
	Female	49%
	Median age (years)	44.3
	Average household size (2011 Census)	2.4
	No. of private dwellings (2011 Census)	50,648
	Median weekly household income	\$852
	Median monthly mortgage repayments	\$1,200
	Median weekly rent	\$175
	Dwellings with no motor vehicles	5%

Occupation (2011 Census) %

<i>Employed people aged 15 years and over</i>	
Professionals	11.5
Clerical and administrative workers	12.1
Technicians and trade workers	16.3
Managers	14.4
Sales workers	9.0
Community and personal service workers	11.4
Labourers	14.4
Machinery operators and drivers	9.1

Tenure (2011 Census) %

Owned outright	39.3
Owned with a mortgage	35.6
Rented	21.9



Sources: Australian Electoral Commission 2016, MapData Services

Employment (2011 Census) %

<i>Of people who reported being in the labour force, aged 15 years and over</i>	
Worked full-time	53.5
Worked part-time	32.5
Away from work (e.g. holidays, paid leave)	7.0
Unemployed	7.0

People characteristics (2011 Census) %

Aboriginal and Torres Strait Islander	4.1
Born in Australia	90.3
Born overseas	9.7

*ERP (estimated resident population) is for 2015. The latest available age and sex breakdowns are based on 2014 ERP. The 2016 Commonwealth Electoral Division (CED) boundaries are provided by the Australian Electoral Commission. ABS 2011 Census of Population and Housing data and ERP data are based on 2011 Australian Statistical Geography Standard boundaries that closely approximate the new CED boundaries.