

Wright

The ABS provides detailed statistics for every Commonwealth Electorate. The date of the next Census of Population and Housing is 9 August 2016, with results available from mid-2017.

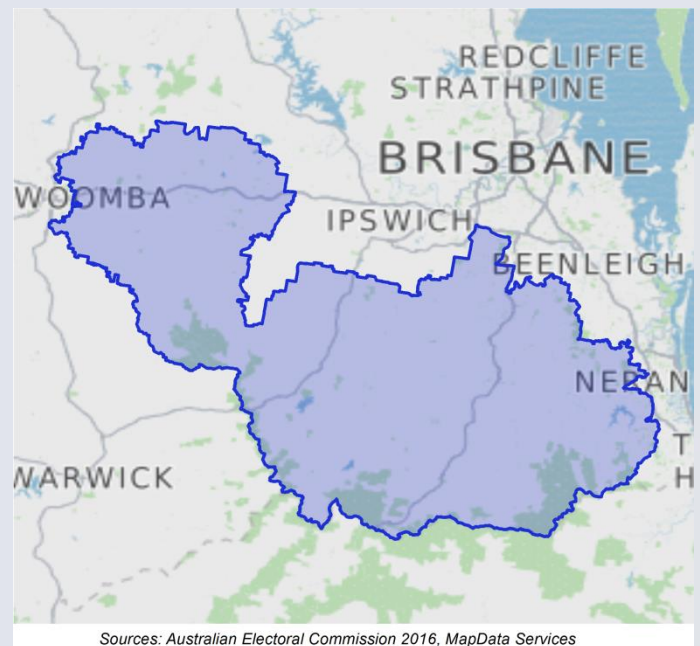
	Population (ERP*)	151,359
	Male	50%
	Female	50%
	Median age (years)	39.1
	Average household size (2011 Census)	2.9
	No. of private dwellings (2011 Census)	49,621
	Median weekly household income	\$1,247
	Median monthly mortgage repayments	\$1,900
	Median weekly rent	\$280
	Dwellings with no motor vehicles	3%

Occupation (2011 Census) %

<i>Employed people aged 15 years and over</i>	
Professionals	13.4
Clerical and administrative workers	14.3
Technicians and trade workers	17.2
Managers	13.3
Sales workers	9.1
Community and personal service workers	9.4
Labourers	12.6
Machinery operators and drivers	8.8

Tenure (2011 Census) %

Owned outright	30.1
Owned with a mortgage	46.7
Rented	20.2



Employment (2011 Census) %

<i>Of people who reported being in the labour force, aged 15 years and over</i>	
Worked full-time	58.5
Worked part-time	29.8
Away from work (e.g. holidays, paid leave)	5.9
Unemployed	5.8

People characteristics (2011 Census) %

Aboriginal and Torres Strait Islander	2.2
Born in Australia	82.1
Born overseas	17.9

*ERP (estimated resident population) is for 2015. The latest available age and sex breakdowns are based on 2014 ERP. The 2016 Commonwealth Electoral Division (CED) boundaries are provided by the Australian Electoral Commission. ABS 2011 Census of Population and Housing data and ERP data are based on 2011 Australian Statistical Geography Standard boundaries that closely approximate the new CED boundaries.