

Kennedy

The ABS provides detailed statistics for every Commonwealth Electorate. The date of the next Census of Population and Housing is 9 August 2016, with results available from mid-2017.

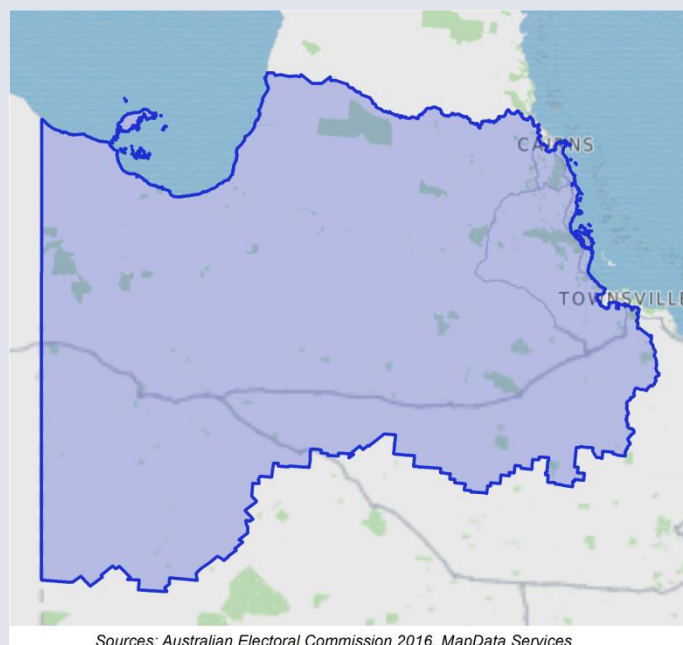
	Population (ERP*)	163,881
	Male	52%
	Female	48%
	Median age (years)	38.8
	Average household size (2011 Census)	2.6
	No. of private dwellings (2011 Census)	62,164
	Median weekly household income	\$1,035
	Median monthly mortgage repayments	\$1,517
	Median weekly rent	\$180
	Dwellings with no motor vehicles	7%

Occupation (2011 Census) %

<i>Employed people aged 15 years and over</i>	
Professionals	12.3
Clerical and administrative workers	11.3
Technicians and trade workers	16.9
Managers	14.5
Sales workers	7.9
Community and personal service workers	9.3
Labourers	14.5
Machinery operators and drivers	11.3

Tenure (2011 Census) %

Owned outright	34.8
Owned with a mortgage	28.1
Rented	32.6



Sources: Australian Electoral Commission 2016, MapData Services

Employment (2011 Census) %

<i>Of people who reported being in the labour force, aged 15 years and over</i>	
Worked full-time	61.7
Worked part-time	25.2
Away from work (e.g. holidays, paid leave)	6.9
Unemployed	6.1

People characteristics (2011 Census) %

Aboriginal and Torres Strait Islander	13.3
Born in Australia	87.4
Born overseas	12.6

*ERP (estimated resident population) is for 2015. The latest available age and sex breakdowns are based on 2014 ERP. The 2016 Commonwealth Electoral Division (CED) boundaries are provided by the Australian Electoral Commission. ABS 2011 Census of Population and Housing data and ERP data are based on 2011 Australian Statistical Geography Standard boundaries that closely approximate the new CED boundaries.