

# Bonner

The ABS provides detailed statistics for every Commonwealth Electorate. The date of the next Census of Population and Housing is 9 August 2016, with results available from mid-2017.

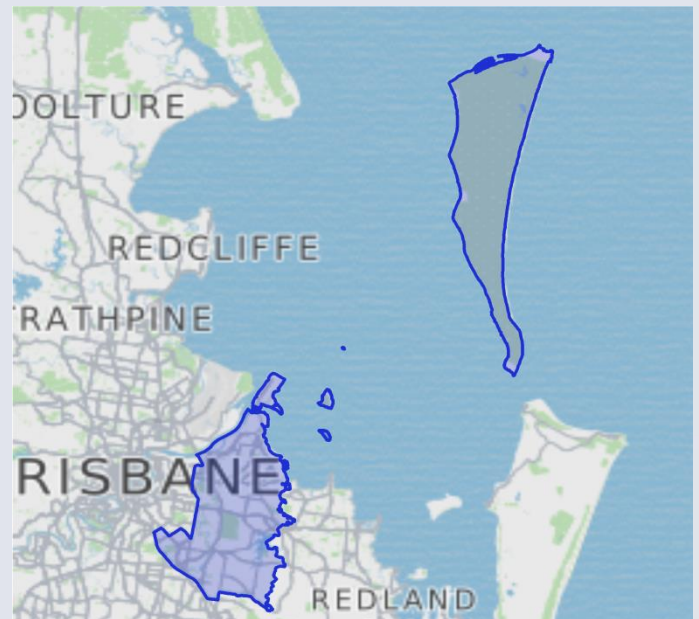
	<b>Population (ERP*)</b>	<b>154,265</b>
	Male	49%
	Female	51%
	Median age (years)	37.6
	<b>Average household size (2011 Census)</b>	<b>2.7</b>
	<b>No. of private dwellings (2011 Census)</b>	<b>53,312</b>
	Median weekly household income	\$1,509
	Median monthly mortgage repayments	\$2,100
	Median weekly rent	\$360
	Dwellings with no motor vehicles	7%

<b>Occupation (2011 Census)</b>	<b>%</b>
---------------------------------	----------

<i>Employed people aged 15 years and over</i>	
Professionals	23.7
Clerical and administrative workers	17.5
Technicians and trade workers	12.8
Managers	12.6
Sales workers	9.4
Community and personal service workers	8.6
Labourers	8.3
Machinery operators and drivers	5.4

<b>Tenure (2011 Census)</b>	<b>%</b>
-----------------------------	----------

Owned outright	32.3
Owned with a mortgage	36.2
Rented	28.5



Sources: Australian Electoral Commission 2016, MapData Services

<b>Employment (2011 Census)</b>	<b>%</b>
---------------------------------	----------

<i>Of people who reported being in the labour force, aged 15 years and over</i>	
Worked full-time	61.7
Worked part-time	27.9
Away from work (e.g. holidays, paid leave)	5.4
Unemployed	5.1

<b>People characteristics (2011 Census)</b>	<b>%</b>
---	----------

Aboriginal and Torres Strait Islander	1.7
Born in Australia	73.8
Born overseas	26.2

\*ERP (estimated resident population) is for 2015. The latest available age and sex breakdowns are based on 2014 ERP. The 2016 Commonwealth Electoral Division (CED) boundaries are provided by the Australian Electoral Commission. ABS 2011 Census of Population and Housing data and ERP data are based on 2011 Australian Statistical Geography Standard boundaries that closely approximate the new CED boundaries.