



Census
For a brighter future

Read Me

Help

The DataPacks 'Help' page will become available in June 2012.

National Information and Referral Service (NIRS)

NIRS consultants have been trained in the range of statistical data and information that is produced by the Australian Bureau of Statistics (ABS). For straightforward enquiries, we are able to provide limited free data and information to you over the phone. For complex or wide-ranging enquiries about ABS data, we can assist you to find what you need, using resources available through this web site and/or many public libraries. In some instances, data may need to be compiled for you on a fee-for-service basis.

National Information and Referral Service (NIRS) Ph: 1300 135 070.

Mapinfo users

To open the 2011 DataPacks boundary files you need to use Mapinfo version 7.8 or above.

When creating .tab files in Mapinfo for SA1, SA2, SA3, SA4, STE or SLA, the 'region ID' in the CSV file has to be changed from 'integer' or 'small integer' to 'character'.

For details see [Creating .tab files](#).

Summary of DataPacks

What you get in a DataPack

DataPacks contain data for Census geographical areas ranging from Statistical Area Level 1 to the whole of Australia. They include geography boundary files, metadata and reference documents to enable you to read the data.

Metadata files contain the information you need to match the data with the Community Profile template, such as information about the sequential numbers and labels, the digital boundaries, the table descriptors, and the population that is being counted.

DataPacks do not include software.

Using the DataPacks

You can use DataPacks if you:

- want to use the data with your own database or analysis systems
- want Community Profile data for numerous geographic areas.

Once you have Census data in your Geographic Information System (GIS), you can merge the data with the digital boundaries.

The data items in DataPacks are contained in CSV files.

Descriptors

There are three options for column labels in the 2011 DataPacks. You can use the sequential number labels, short descriptors (up to 29 characters) or long descriptors. Short descriptors were created for use with Geographic Information System (GIS) software.

The example below, using Local Government Area (LGA) geography, shows the three options for descriptors.

Columns with sequential number labels

region_id	B1	B2	B3
LGA10050	0	0	0
LGA10110	0	0	0
LGA10150	0	0	0

Columns with short descriptor labels

region_id	Tot_P_M	Total_P_F	Total_P_P
LGA10050	0	0	0
LGA10110	0	0	0
LGA10150	0	0	0

Columns with long descriptor labels

region_id	Total_Persons_Males	Total_Persons_Females	Total_Persons_Persons
LGA10050	0	0	0
LGA10110	0	0	0
LGA10150	0	0	0

Sample DataPacks

Sample DataPacks will contain the data structure (geography boundaries and Census item descriptors) but no Census data. They will be available to download from the website from 30 April 2012, to assist in setting up your systems ready for the release of the actual DataPacks.

Sample DataPacks will only be available for the following profiles:

- Basic Community Profile
- Aboriginal and Torres Strait Islander Peoples (Indigenous) Profile
- Time Series Profile.

Boundaries for first release data will be available for download on 30 April 2012.

The Sample DataPacks will not be released on DVD.

DataPacks on DVD

The initial release of DataPacks will be on DVD, mailed from the ABS.

DataPacks will also be available to download from our website for free. Downloads become available a couple of weeks later than the DVDs.

DataPacks on DVD will be available for the Community Profiles and will include all Census geographical areas ranging from Statistical Area Level 1 to the whole of Australia.

Price

DVDs are priced to recover administrative and production costs. The data is free.

The Community Profile DataPacks are not sold on separate DVDs but are sold as compilations.

One DVD has the DataPacks for:

- Basic Community Profile
- Aboriginal and Torres Strait Islander Peoples (Indigenous) Profile
- Time Series Profile DataPacks.

Another DVD has the DataPacks for:

- Place of Enumeration Profile
- Expanded Profile
- Working Population Profile (this is on the second release DVD only).
-

Each of these DVDs costs \$100 (including postage and GST). This price includes the second and third release DVDs which will also be mailed to you.

The Estimated Resident Population costs \$50 (including postage and GST).

All DataPacks on DVD costs \$250.

Ordering

You can order DataPack DVDs now, by phoning our National Information and Referral Service on 1300 135 070. International callers phone +61 2 9268 4909. You do not need to be a registered user.

You will need to give the catalogue number for the type of DataPack you want to buy:

- Basic Community, Aboriginal and Torres Strait Islander Peoples and Time Series Profiles, DVD cat. no. 2069.0.30.008
- Place of Enumeration, Expanded and Working Population Profiles, DVD cat. no. 2069.0.30.009
- Estimated Resident Population, DVD cat. no. 2069.0.30.010.

The DataPack will then be mailed to you on the day of data release.

Release dates for DataPacks on DVD

DataPack	First Release	Second Release	Third Release
BCP	21 Jun 2012	30 Oct 2012	28 Mar 2013
IP	21 Jun 2012	30 Oct 2012	28 Mar 2013
TSP	21 Jun 2012	30 Oct 2012	..
PEP	21 Aug 2012	20 Nov 2012	28 Mar 2013

XCP	21 Aug 2012	20 Nov 2012	..
WPP	..	20 Nov 2012	..
ERP	26 Aug 2013

.. not applicable

The table above shows the availability of data on DVD for the first, second and third releases. The release dates are the dates on which the DataPacks will be mailed from the ABS.

The third release for the Basic Community Profile, Indigenous Profile and Place of Enumeration Profile will include Remoteness Area, but no new tables.

DataPacks online

From 10 July 2012, DataPacks will be available to download free of charge from our website. You will need to register to download DataPacks. You are advised to register early, as high levels of traffic on the website are expected on release dates.

When you download a DataPack, you will choose the profiles and descriptor types as well as the type of geographic area.

Release dates for DataPacks online

DataPack	First Release	Second Release	Third Release
BCP	10 Jul 2012	20 Nov 2012	28 Mar 2013
IP	10 Jul 2012	20 Nov 2012	28 Mar 2013
TSP	10 Jul 2012	20 Nov 2012	..
PEP	3 Sep 2012	27 Nov 2012	28 Mar 2013
XCP	3 Sep 2012	27 Nov 2012	..
WPP	..	27 Nov 2012	..
ERP	26 Aug 2013

.. not applicable

The table above shows the data available to download from the Census website for the first, second and third releases.

The third release for the Basic Community Profile, Indigenous Profile and Place of Enumeration Profile will include Remoteness Area, but no new tables.

Availability of geographic structures

The following tables show the availability of data for each geographic area, for the first, second and third releases.

Legend:

1 = DataPack first release data

2 = DataPack second release data

3 = DataPack available after second release

Abbreviations for geographic structures are listed after the tables.

Geography: ABS structures

DataPack	Aust	STE	SA4	SA3	SA2	SA1	GCCSA	IREG	IARE	ILOC	SUA	UC/L	SOS	SOSR	RA
BCP	1	1	1	1	1	1	1				2	2	2	2	3
PEP	1	1	1	1	1	1	1				2	2	2	2	3
IP	1	1	1	1	1		1	1	1	1					3
TSP	1	1	1	1	1		1								
XCP	1	1	1	1	1		1				2				
WPP	2	2	2	2	2		2								
ERP	3	3	3	3	3		3								

Geography: Non-ABS structures

DataPack	LGA	SLA	SSC	POA	CED	SED
BCP	1	1	1	1	1	1
PEP	1	1	1	1	1	1
IP	1	1				
TSP	1	1				
XCP	1	1				
WPP	2					
ERP	3	3				

Abbreviations

Aust	Australia
CED	Commonwealth Electoral Divisions
GCCSA	Greater Capital City Statistical Areas
IARE	Indigenous Areas
ILOC	Indigenous Locations
IREG	Indigenous Regions
LGA	Local Government Areas
POA	Postal Areas
RA	Remoteness Areas
SA1	Statistical Area Level 1
SA2	Statistical Area Level 2
SA3	Statistical Area Level 3
SA4	Statistical Area Level 4
SED	State Electoral Divisions
SLA	Statistical Local Areas
SOS	Section of State
SOSR	Section of State Ranges
SSC	State Suburbs
STE	States and Territories
SUA	Significant Urban Areas
UC/L	Urban Centres and Localities

Summary of Community Profiles

The community profiles are released in two phases. First release tables are those containing variables which are relatively easy to process and will be available on release day. Second release tables contain variables which require more complex processing and will be available on the second release day.

Basis for counting people

- 'Place of usual residence' data counts people where they usually live.
- 'Place of enumeration' is the place at which the person is counted i.e. where he/she spent Census Night, which may not be where he/she usually lives.
- 'Place of work' data provides information on where a person goes to work.

Templates

The templates provide an easy way for you to visualise all data cells available in the data files. They contain the formatted tables and the corresponding cell reference numbers. The templates are in the Metadata folder.

Community profile	Template
BCP	2011_BCP_datapack_sequential_template.xls
IP	2011_IP_datapack_sequential_template.xls
TSP	2011_TSP_datapack_sequential_template.xls
PEP	2011_PEP_datapack_sequential_template.xls
XCP	2011_XCP_datapack_sequential_template.xls
WPP	2011_WPP_datapack_sequential_template.xls

Community profiles in brief

Basic Community Profile (BCP)

- The BCP contains the Census characteristics on persons, families and dwellings.
- The data is based on place of usual residence.
- Tables B01-B36 are released on 21 June 2012. Tables B37-B46 are released on 30 October 2012.
- Boundaries for Remoteness Areas are released on 28 March 2013.

Aboriginal and Torres Strait Islander Peoples (Indigenous) Profile (IP)

- The IP contains the Census characteristics of Indigenous persons and households. Some tables provide comparisons with the non-Indigenous population.
- The data is based on place of usual residence.
- Tables I01-I13 are released on 21 June 2012. Tables I14-I16 are released on 30 October 2012.
- Boundaries for Remoteness Areas are released on 28 March 2013.

Time Series Profile (TSP)

- The TSP contains the Census characteristics of persons, families and dwellings.
- The data is based on place of enumeration.
- Tables T01-T27 are released on 21 June 2012. Tables T28-T34 are released on 30 October 2012.
- The TSP has data from the 2001, 2006 and 2011 censuses. Where classifications have been revised, data are output on the classification used for the 2011 Census.

Place of Enumeration (PEP)

- The PEP contains the Census characteristics of persons, families and dwellings.
- The data is based on place of enumeration.

- Tables P01-P36 are released on 21 August 2012. Tables P37-P44 are released on 20 November 2012.
- Boundaries for Remoteness Areas are released on 28 March 2013.

Expanded Community Profile (XCP)

- The XCP is the most comprehensive Profile providing extended data on the Census characteristics of persons, families and dwellings.
- The data is based on place of usual residence.
- Tables X01-X32 are released on 21 August 2012. Tables X33-X42 are released on 20 November 2012.
- Tables within this profile contain more detailed versions of the Basic Community Profile tables, plus additional tables relating to relationships within a family, living costs and dwelling structures.

Working Population Profile (WPP)

- The WPP contains the Census characteristics of employed persons.
- This data is based on the Journey to Work areas.
- All 23 WPP tables are released on 27 November 2012.

Installing the DataPack on your hard drive

The Census profile DVDs include three DataPacks. For example the BCP, IP and the TSP. We suggest that you copy the selected DataPack (or DataPacks) you are going to use, to your computer's hard drive.

You should then create a new folder in the directory of your choice before unzipping the data. If you were copying the BCP for example, you might name the folder 'Census 2011 BCP release 1'.

When you unzip the files, you can unzip them to this directory and this will keep the CSV data files together with the digital boundary files for ASGS.

The second release DVD contains the entire contents of the first release DVD, plus the second release tables.

The third release DVD contains the entire contents of the first and second release DVDs, plus remoteness area boundaries. Remoteness areas are only applicable to the BCP, IP and TSP.

File format and directory structure

CSV files format

CSV files are in the format:

Table number_state_geography.csv

'Table number' is the Community Profile table number.

For instance:

- Basic Community Profile tables are numbered B1, B2 etc.
- Time Series Profile tables are numbered T1, T2 etc.

For each CSV file there is a limit of 200 data items. For tables with more than 200 data items, additional CSV files are created.

In the Basic Community Profile for example, table B4 has 297 data items. The CSV file which contains the first 200 data items is named B04A... and the file with the remaining 97 data items is named B04B...

Directory structure for DataPacks on DVD

The hierarchy for the file directory is:

DATAPACK TYPE

- Basic Community Profile
- Indigenous Community Profile
- Time Series Profile

DESCRIPTOR TYPE

- 1 Short descriptor
- 1 Long descriptor
- 1 Sequential number descriptor

GEOGRAPHY TYPE (Geography types vary based on the Community Profile. These geography types are for the Basic Community Profile.)

- Australia
- Commonwealth Electoral Division
- Greater Capital City Statistical Area
- Local Government Area
- Postal Area
- Statistical Area Level 1
- Statistical Area Level 2
- Statistical Area Level 3
- Statistical Area Level 4
- State Electoral Division
- Statistical Local Area
- State Suburb
- State

STATE/AUSTRALIA

- ACT
- AUST
- NSW
- NT
- OT
- QLD
- SA
- TAS
- VIC
- WA

CSV files are in the format:

Table_number_state_geography.csv

For example

To access the first five tables (csv files) of the Basic Community Profile showing short descriptors for the geography of Statistical Area Level 4 for Western Australia.

Select: 2011 Basic Community Profile Release 1/ Short descriptor/ Statistical Area Level 4/ WA.

2011 Basic Community Profile Release 1

Short Descriptor

Australia
Commonwealth Electoral Division
Greater Capital City Statistical Area
Local Government Area
Postal Area
Statistical Area Level 1
Statistical Area Level 2
Statistical Area Level 3

Statistical Area Level 4

ACT
AUST
NSW
NT
OT
QLD
SA
TAS
VIC
WA

B01_WA_SA4.csv
B02_WA_SA4.csv
B03_WA_SA4.csv
B04A_WA_SA4.csv
B04B_WA_SA4.csv
B05_WA_SA4.csv

Creating .tab files

This is applicable to Mapinfo only.

When creating '.tab' files in Mapinfo for SA1, SA2, SA3, SA4, STE or SLA, the 'region ID' in the CSV file has to be changed from field type of 'integer' or 'small integer' to 'character'.

This is not necessary with other geographies. The '.tab' files for other geographies can be opened and merged with the data file in the usual way.

To do this:

Open Mapinfo.

(In this example we are using Mapinfo Professional 10.5)

Cancel 'Quick Start'.

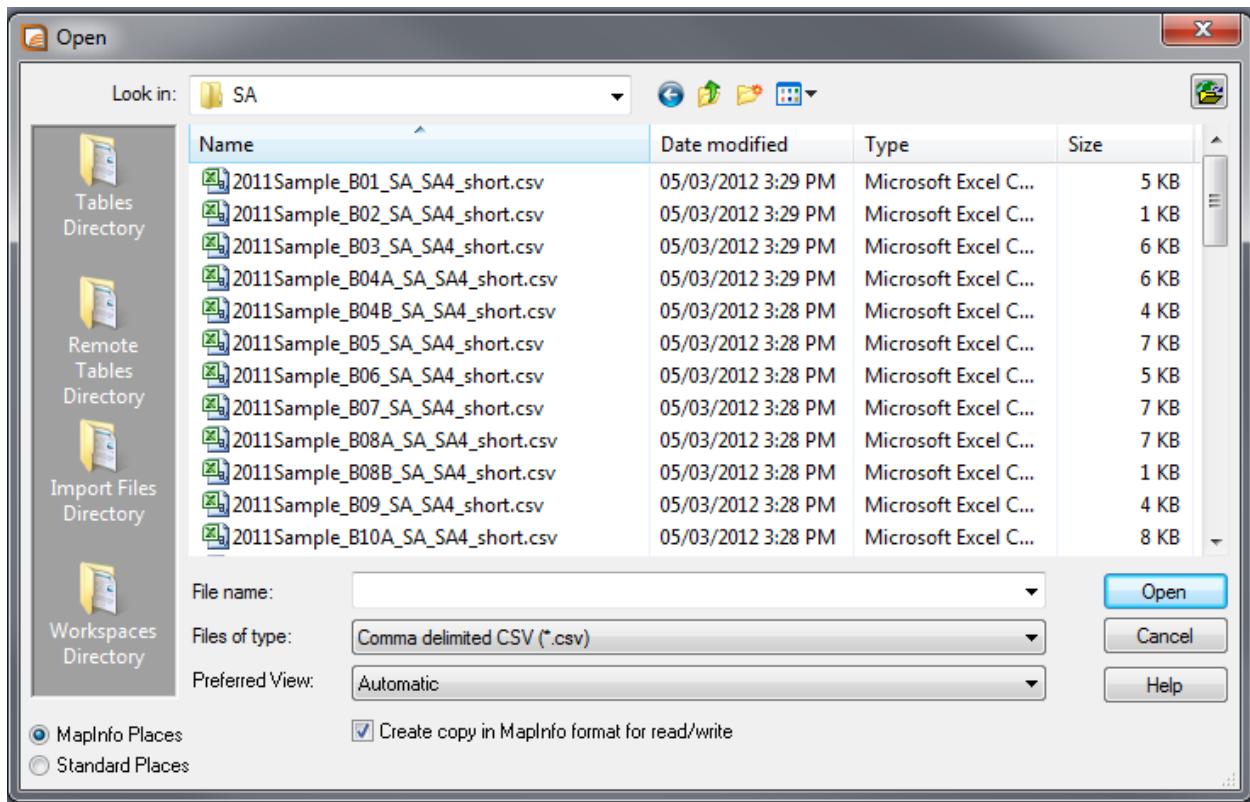
Select 'File'.

(In this example we are using SA4 geography for South Australia)

Select 'Open'.

When the 'Open' tile appears:

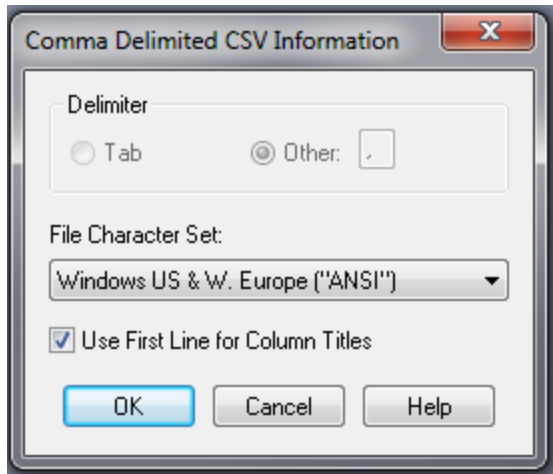
- In the field 'Files of type' select 'Comma delimited CSV'.
- Select your CSV file.
- Tick the 'Create copy in Mapinfo format for read/write' box.
- Press the 'Open' button.



The 'Comma Delimited CSV Information' tile appears.

Tick the 'Use First Line for Column Titles' box.

Then press the 'OK' button.

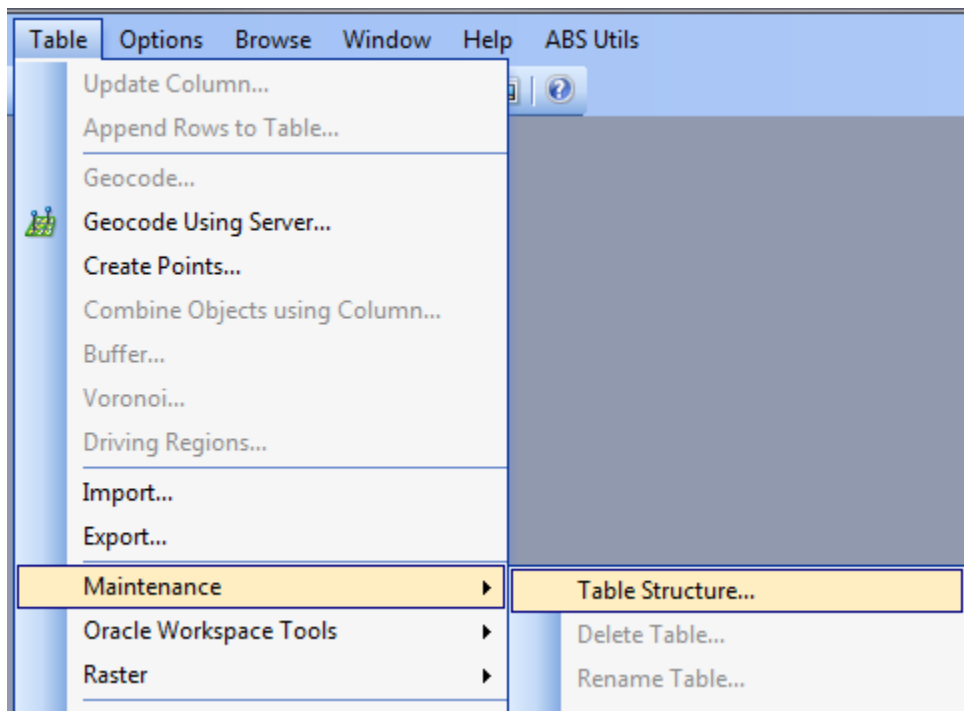


The file will open.

The screenshot shows a table browser window titled "_2011Sample_B06_SA_SA4_short Browser". It displays a table with 9 columns and 7 data rows. Each row is preceded by a checkbox.

	region id	M 15 19 yrs Marrrd reg	M 15 19 yrs Married de	M 15 19 yrs Not marr	M 15 19 yrs Total	M 20 24 yrs Marrrd reg	M 20 24 yrs Marri
<input type="checkbox"/>	401	0	0	0	0	0	
<input type="checkbox"/>	402	0	0	0	0	0	
<input type="checkbox"/>	403	0	0	0	0	0	
<input type="checkbox"/>	404	0	0	0	0	0	
<input type="checkbox"/>	405	0	0	0	0	0	
<input type="checkbox"/>	406	0	0	0	0	0	
<input type="checkbox"/>	407	0	0	0	0	0	

Select, 'Table'/'Maintenance'/'Table Structure'.



Change 'Small Integer' or 'Integer' to 'Character'.

Modify Table Structure: _2011Sample_B06_SA_SA4_short

Fields	Type	Indexed
region_id	Small Integer	<input type="checkbox"/>
M_15_19_yrs_Marrd	Small Integer	<input type="checkbox"/>
M_15_19_yrs_Marrie	Small Integer	<input type="checkbox"/>
M_15_19_yrs_Not_m	Small Integer	<input type="checkbox"/>
M_15_19_yrs_Total	Small Integer	<input type="checkbox"/>
M_20_24_yrs_Marrd	Small Integer	<input type="checkbox"/>
M_20_24_yrs_Marrie	Small Integer	<input type="checkbox"/>
M_20_24_yrs_Not_m	Small Integer	<input type="checkbox"/>
M_20_24_yrs_Total	Small Integer	<input type="checkbox"/>
M_25_34_yrs_Marrd	Small Integer	<input type="checkbox"/>
M_25_34_yrs_Marrie	Small Integer	<input type="checkbox"/>
M_25_34_yrs_Not_m	Small Integer	<input type="checkbox"/>
M_25_34_yrs_Total	Small Integer	<input type="checkbox"/>

Field Information

Name:

Type:

☐ Table is Mappable

Up Down Add Field Remove Field

OK Cancel Help

The change to 'Character' will bring up the 'Width' box.

Modify Table Structure: _2011Sample_B06_SA_SA4_short

Fields	Type	Indexed
region_id	Character(3)	<input type="checkbox"/>
M_15_19_yrs_Marrd	Small Integer	<input type="checkbox"/>
M_15_19_yrs_Marrie	Small Integer	<input type="checkbox"/>
M_15_19_yrs_Not_m	Small Integer	<input type="checkbox"/>
M_15_19_yrs_Total	Small Integer	<input type="checkbox"/>
M_20_24_yrs_Marrd	Small Integer	<input type="checkbox"/>
M_20_24_yrs_Marrie	Small Integer	<input type="checkbox"/>
M_20_24_yrs_Not_m	Small Integer	<input type="checkbox"/>
M_20_24_yrs_Total	Small Integer	<input type="checkbox"/>
M_25_34_yrs_Marrd	Small Integer	<input type="checkbox"/>
M_25_34_yrs_Marrie	Small Integer	<input type="checkbox"/>
M_25_34_yrs_Not_m	Small Integer	<input type="checkbox"/>
M_25_34_yrs_Total	Small Integer	<input type="checkbox"/>

Field Information

Name:

Type:

Width:

☐ Table is Mappable

Up Down Add Field Remove Field

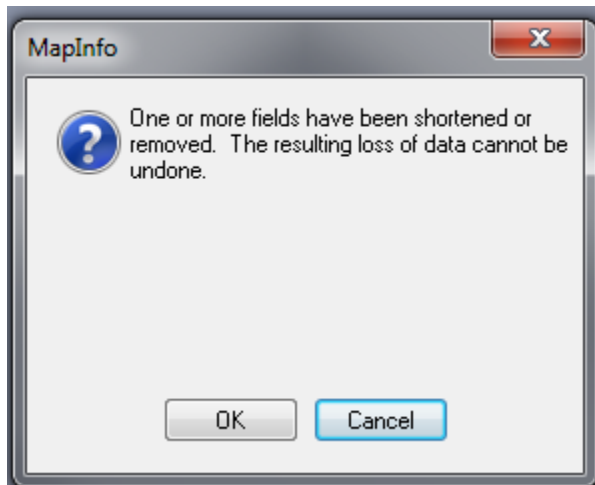
OK Cancel Help

The 'width' is the number of characters in the geography code.
 In this case the geography is SA4. SA4s have three digit codes.
 You can see this under 'region ID' below.
 Then press OK.

Note: Some geographies will have codes of more than three numerals and so will have commas.
 When counting the number of characters for the 'width' field, exclude the commas from the count.

region id	M 15 19 yrs Marrd reg i	M 15 19 yrs Married de	M 15 19 yrs Not marr	M 15 19 yrs Total	M 20 24 yrs Marrd reg i	M 20 24 yrs Marri
401	0	0	0	0	0	
402	0	0	0	0	0	
403	0	0	0	0	0	
404	0	0	0	0	0	
405	0	0	0	0	0	
406	0	0	0	0	0	
407	0	0	0	0	0	

The following tile will always appear.
 Press OK.



Done.