

THE LABOUR FORCE, MAY 1972

(Including revised seasonally adjusted estimates for February 1964 to February 1972)

Reference No. 6.20

Estimates of the civilian labour force are based on the results of the quarterly population survey, which is conducted on a sample basis throughout Australia in February, May, August and November each year. The survey information is obtained by means of personal interviews carried out by specially trained enumerators. The sample is currently being reselected. For details, see page 16, paragraph 2. The estimates relate to all persons aged fifteen years and over, except members of the permanent armed forces, national servicemen enlisted in the Regular Army Supplement and certain diplomatic personnel customarily excluded from census and estimated populations.

Particulars of birthplace ~~and, for immigrants, year of arrival in Australia~~ are now included in this bulletin. Estimates for February 1972 were published separately in the bulletin "The Labour Force: Country of Birth and Period of Residence in Australia, February 1972" (Reference No. 6.31), issued on 19 June 1972.

CONTENTS

Table		Page
..	Explanatory notes -	
	Classification of the labour force	2
	Estimates for earlier periods	3
	Seasonally adjusted series	3
	Summary, May 1972	3
	Graphs	4
	<u>Civilian population 15 years of age and over</u>	
1.	Employment status, February 1971 to May 1972	5
2.	Employment status and birthplace, May 1972	6
	<u>Civilian labour force</u>	
3.	Age, May 1972	6
4.	Seasonally adjusted estimates, February 1964 to May 1972 (revised series)	7
5.	Participation rates by age and birthplace, May 1972	9
	<u>Employed persons</u>	
6.	Hours worked, May 1972	9
7.	Persons who worked less than 35 hours, by reason, May 1972	10
8.	Married women, by industry and hours worked, May 1972	10
	<u>Unemployed persons</u>	
9.	Age, May 1972	11
10.	Age and birthplace, May 1972	11
11.	Unemployment rates, capital cities and other areas, February 1971 to May 1972	11
12.	Looking for full-time work and looking for part-time work, May 1972	12
13.	Duration of unemployment, May 1972	12
14.	Duration of unemployment, by age, etc., May 1972	13
15.	Unemployment rates, industry and occupation, May 1972	13
16.	Industry, occupation and duration of unemployment, May 1972	14
	<u>Persons not in the labour force</u>	
17.	Major activity, February 1971 to May 1972	15
..	Technical note -	
	Estimation procedure	16
	Reliability of the estimates	16

EXPLANATORY NOTESClassification of the labour force

1. The labour force category to which a person is assigned depends on his actual activity (i.e. whether working, looking for work, etc.) during a specified week, known as "survey week", which is the week immediately preceding that in which the interview takes place. The interviews are carried out during a period of four weeks, so that there are four survey weeks in each of the months to which the survey relates. These survey weeks generally fall within the limits of the calendar month. The principal categories appearing in the tables in this bulletin are defined in the following paragraphs.

2. The labour force comprises all persons who, during survey week, were employed or unemployed as defined in paragraphs 3 and 4.

3. Employed persons comprise all those who, during survey week,

- (a) did any work for pay, profit, commission or payment in kind, in a job or business, or on a farm (including employees, employers and self-employed persons), or
- (b) worked fifteen hours or more without pay in a family business (or farm), or
- (c) had a job, business or farm, but were not at work because of illness, accident, leave, holiday, production hold-up due to bad weather, plant breakdown, etc., or because they were on strike.

A person who had a job but was temporarily laid off by his employer for the whole week without pay is excluded, and is classified in the tables as unemployed. A person who did some work during the week, however, before he either lost his job or was laid off, is classified as employed. A person who held more than one job is counted only once, in the job at which he worked most hours during survey week.

4. Unemployed persons comprise all those who, during survey week, did no work at all, and who either

- (a) did not have a job or business and were actively looking for work (including those who stated that they ~~would~~ have looked for work if they had not been temporarily ill or believed no work was available, or had not already made definite arrangements to start work in a new job after survey week), or
- (b) were laid off from their jobs without pay for the whole week.

A person who either lost his job or was laid off during survey week, but did some work at his job during survey week, is classified as employed.

5. Full-time workers are those who usually work 35 hours a week or more and others who, although usually part-time workers, worked 35 hours or more during the survey week.

Part-time workers are those who usually work less than 35 hours a week and who did so during the survey week. When recording hours of work, fractions of an hour are disregarded.

6. Persons not in the labour force are all those who, during survey week, were not in the categories "employed" or "unemployed" as defined. This category therefore includes persons without a job, business or farm who were not actively looking for work, and who, during the survey week, were either keeping house (unpaid), attending an educational institution (e.g. school or university), retired or voluntarily idle, permanently unable to work or inmates of institutions. A person who worked less than fifteen hours without pay in a family business during survey week is also classified as not in the labour force.

7. At the 1971 population census, trainee teachers were for the first time classified as not in

the labour force. They were likewise excluded for the first time from the labour force estimates derived from the August 1971 population survey. Exclusion of these students constitutes a break in the series between May and August 1971, the numbers of males and females excluded from the labour force in August being approximately seven thousand and seventeen thousand respectively.

Estimates for earlier periods

8. The principal items in this bulletin are shown for the six latest quarters. Greater detail is given for the latest quarter only. A wider range of detailed estimates for each quarter from February 1964 to November 1970 has been published in bulletins entitled "The Labour Force", covering the period 1964 to 1968 and single years thereafter. (All Reference No.6,22). Particulars for the year 1971 will be published in due course.

9. The survey periods for February 1971 and February 1972 were later than in the immediately preceding years, and as a consequence the estimate of the proportion of the population 15 years and over who "went to school" is correspondingly higher. No exact estimate of this effect is available; however, it may be conjectured that had the survey period been one week earlier approximately twenty thousand fewer persons would have been classified in the "went to school" category.

10. In the August 1971 issue of this bulletin revised estimates of the numbers of persons employed in agriculture and other industries were published for the period from February 1968 to May 1971.

Seasonally adjusted series

11. Seasonally adjusted estimates for selected labour force characteristics are shown in table 2. The seasonally adjusted series have been revised following the annual re-analysis of data. Details of the methods used in seasonally adjusting these statistics are explained in "Seasonally Adjusted Indicators, 1972" (Reference No. 1,10), issued on 6 July 1972.

NOTE. Any discrepancies between totals and sums of components in tables are due to rounding.

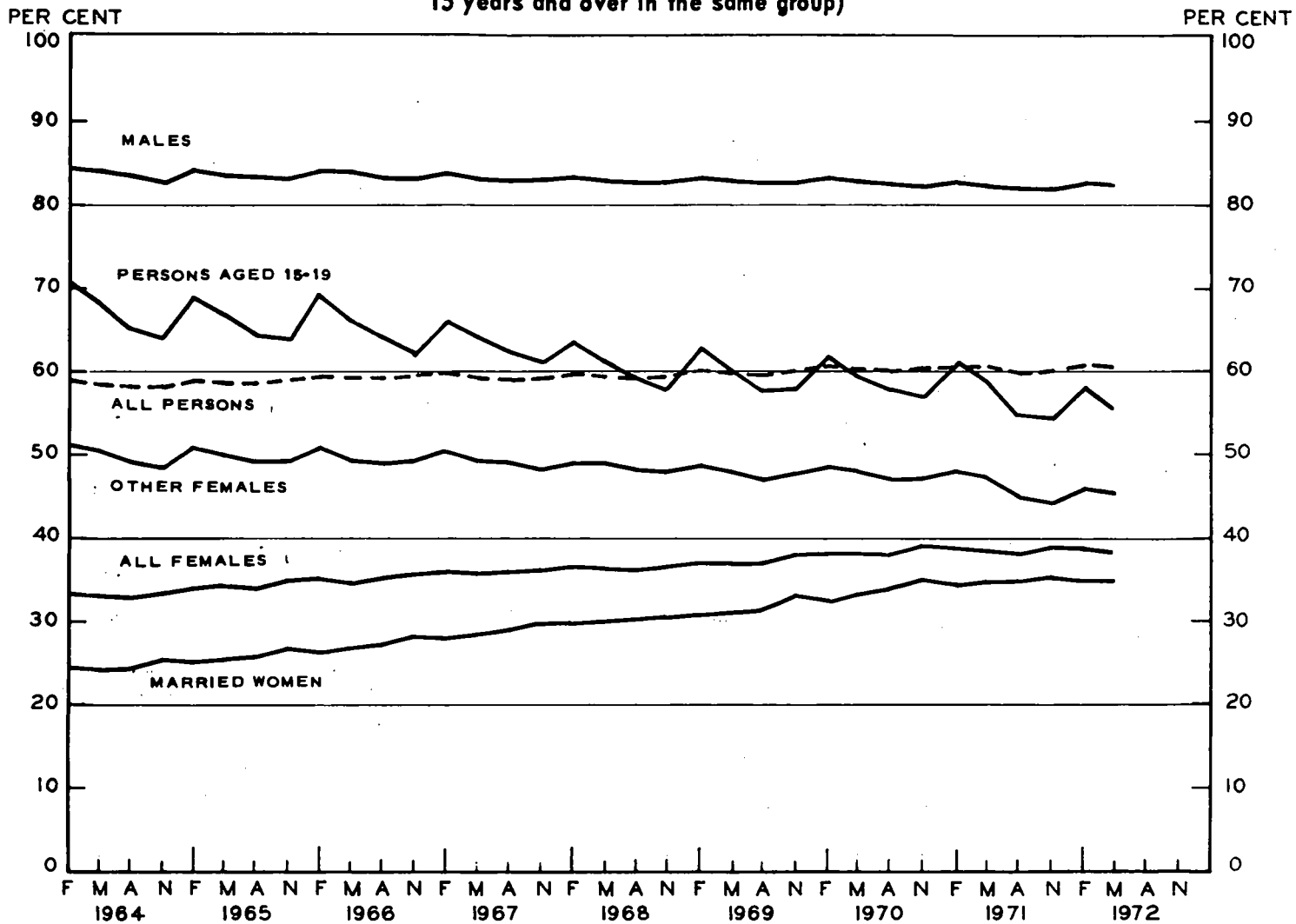
CIVILIAN POPULATION, BY EMPLOYMENT STATUS : SUMMARY, MAY 1972 (a)

	Males	Females	Persons
NUMBER ('000)			
Civilian population aged 15 and over	4,577.7	4,646.1	9,223.8
Not in the labour force	800.1	2,851.2	3,651.2
In the labour force	3,777.6	1,794.9	5,572.6
Employed	3,716.6	1,745.8	5,462.4
In full-time jobs	3,606.0	1,298.8	4,904.9
In part-time jobs	110.6	447.0	557.5
Unemployed	61.0	49.2	110.2
Looking for full-time work	58.6	37.1	95.7
Looking for part-time work	*	12.1	14.5
RATES (Per cent)			
Labour force participation rate (b)	82.5	38.6	60.4
Unemployment rate -			
Original	1.6	2.7	2.0
Seasonally adjusted	1.6	2.8	2.0

(a) For a note on persons excluded see page 1. Definitions of the categories of the population shown in the table are given on page 2. (b) The labour force in each group as a percentage of the civilian population aged 15 and over in the same group. (c) The unemployed as a percentage of the civilian labour force.

LABOUR FORCE PARTICIPATION RATES

(The labour force in each group as a percentage of the civilian population aged 15 years and over in the same group)



UNEMPLOYMENT RATES

(The unemployed in each group as a percentage of the civilian labour force in the same group)

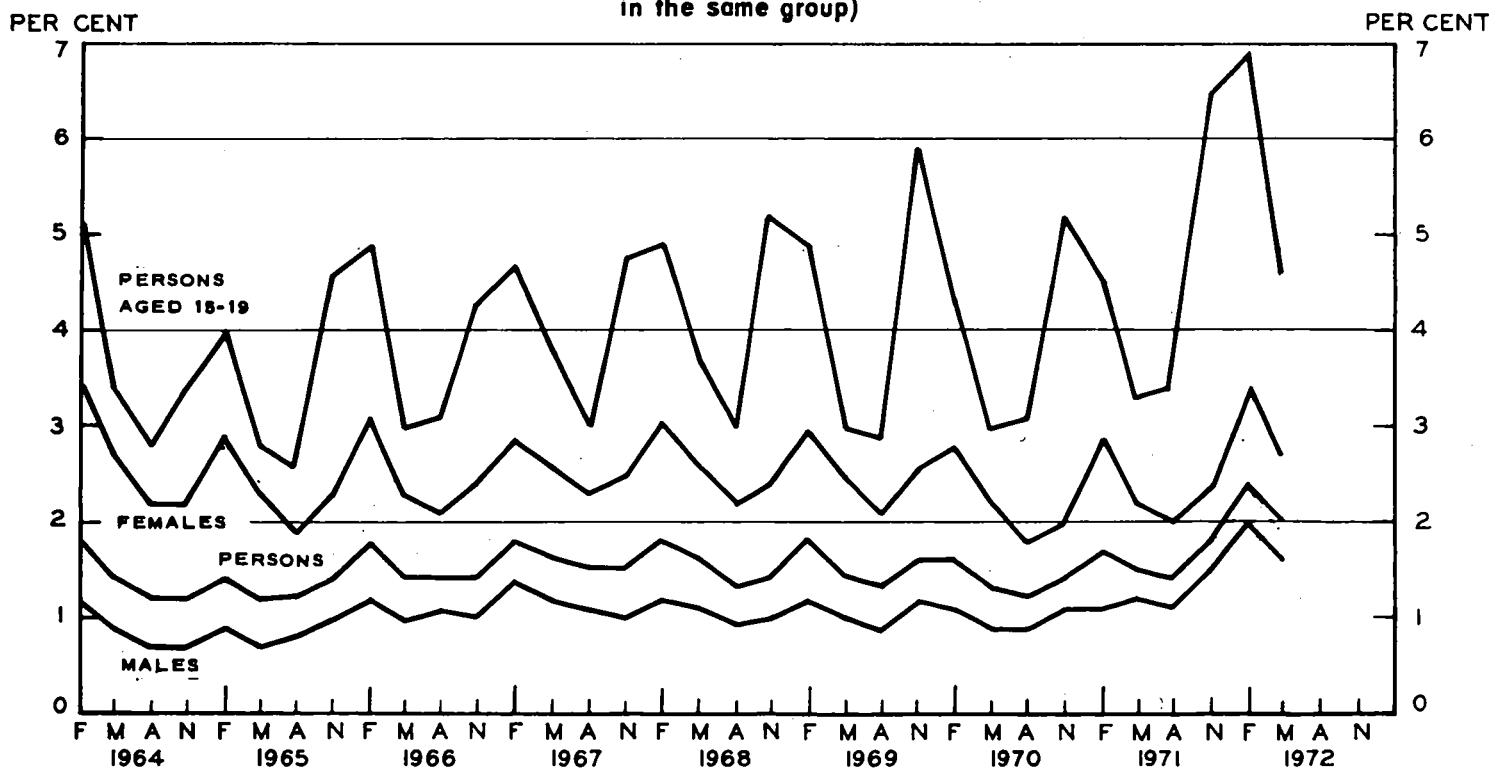


TABLE 1. - CIVILIAN POPULATION 15 YEARS OF AGE AND OVER (a), BY EMPLOYMENT STATUS

Month	Employed (b)			Unemployed (b)		Total labour force (b)		Not in the labour force ('000)	Civilian population aged 15 and over (a) ('000)
	Agri- culture ('000)	Other industries ('000)	Total ('000)	Number ('000)	Per cent of labour force	Number ('000)	Per cent of popula- tion (c)		
MALES									
1971 Feb.(d)	352.7	3,327.1	3,679.8	41.7	1.1	3,721.5	83.1	755.0	4,476.5
May r	341.9	<u>3,342.2</u>	<u>3,684.1</u>	44.0	1.2	<u>3,728.1</u>	<u>82.9</u>	<u>767.1</u>	4,495.2
Aug.	333.8	3,336.3	3,670.1	39.3	1.1	3,709.4	82.3	799.6	4,509.0
Nov.	344.1	3,333.4	3,677.5	57.0	1.5	3,734.6	82.3	804.4	4,539.0
1972 Feb.(d)	355.8	3,350.6	3,706.4	74.8	2.0	3,781.3	82.8	784.3	4,565.6
May	345.3	<u>3,371.3</u>	<u>3,716.6</u>	61.0	1.6	<u>3,777.6</u>	<u>82.5</u>	<u>800.1</u>	<u>4,577.7</u>
MARRIED WOMEN									
1971 Feb.(d)	60.1	955.1	1,015.2	30.2	2.9	1,045.4	34.7	1,966.7	3,012.1
May	50.3	<u>990.2</u>	<u>1,040.4</u>	24.1	2.3	<u>1,064.5</u>	<u>35.2</u>	<u>1,962.3</u>	3,026.8
Aug.	54.5	991.2	1,045.7	21.4	2.0	1,067.1	35.3	1,954.3	3,021.4
Nov.	54.6	1,023.7	1,078.2	19.5	1.8	1,097.7	35.9	1,955.9	3,053.6
1972 Feb.(d)	58.7	988.5	1,047.2	33.1	3.1	1,080.3	35.2	1,989.8	3,070.1
May	51.7	<u>1,012.8</u>	<u>1,064.5</u>	27.8	2.5	<u>1,092.3</u>	<u>35.2</u>	<u>2,011.8</u>	<u>3,104.1</u>
OTHER FEMALES (e)									
1971 Feb.(d)	12.3	712.7	725.0	21.1	2.8	746.1	48.8	781.9	1,528.1
May	11.6	<u>706.5</u>	<u>718.0</u>	14.6	2.0	<u>732.6</u>	<u>47.9</u>	<u>797.8</u>	1,530.4
Aug.	11.8	677.9	689.7	14.3	2.0	704.0	45.4	847.3	1,551.3
Nov.	12.0	662.3	674.4	23.2	3.3	697.5	44.9	854.3	1,551.9
1972 Feb.(d)	12.6	680.5	693.1	28.0	3.9	721.1	46.1	843.5	1,564.5
May	11.1	<u>670.2</u>	<u>681.2</u>	21.4	3.0	<u>702.6</u>	<u>45.6</u>	<u>839.4</u>	<u>1,542.0</u>
ALL FEMALES									
1971 Feb.(d)	72.3	1,667.9	1,740.2	51.3	2.9	1,791.5	39.5	2,748.7	4,540.2
May	61.8	<u>1,696.6</u>	<u>1,758.4</u>	38.7	2.2	<u>1,797.1</u>	<u>39.4</u>	<u>2,760.1</u>	4,557.2
Aug.	66.3	1,669.1	1,735.3	35.8	2.0	1,771.1	38.7	2,801.6	4,572.7
Nov.	66.6	1,686.0	1,752.6	42.7	2.4	1,795.2	39.0	2,810.3	4,605.5
1972 Feb.(d)	71.3	1,669.0	1,740.3	61.0	3.4	1,801.3	38.9	2,833.3	4,634.6
May	62.8	<u>1,683.0</u>	<u>1,745.8</u>	49.2	2.7	<u>1,794.9</u>	<u>38.6</u>	<u>2,851.2</u>	<u>4,646.1</u>
PERSONS									
1971 Feb.(d)	425.0	4,995.0	5,420.0	93.0	1.7	5,513.0	61.1	3,503.7	9,016.7
May r	403.7	<u>5,038.8</u>	<u>5,442.5</u>	82.7	1.5	<u>5,525.1</u>	<u>61.0</u>	<u>3,527.3</u>	9,052.4
Aug.	400.1	5,005.3	5,405.4	75.1	1.4	5,480.5	60.3	3,601.2	9,081.7
Nov.	410.6	5,019.5	5,430.1	99.7	1.8	5,529.8	60.5	3,614.7	9,144.5
1972 Feb.(d)	427.2	5,019.6	5,446.8	135.8	2.4	5,582.6	60.7	3,617.6	9,200.2
May	408.1	<u>5,054.3</u>	<u>5,462.4</u>	110.2	2.0	<u>5,572.6</u>	<u>60.4</u>	<u>3,651.2</u>	<u>9,223.8</u>

(a) For a note on persons excluded see introductory note, page 1. (b) For definitions see page 2, paragraphs 2 to 4. (c) The labour force in each group as a percentage of the civilian population aged 15 years and over in the same group (labour force participation rate). (d) See page 3, paragraph 9. (e) Never married, widowed and divorced. r - revised.

NOTE. See page 2, paragraph 7, regarding discontinuity of the series.

TABLE 2. - CIVILIAN POPULATION 15 YEARS OF AGE AND OVER (a), BY EMPLOYMENT

STATUS AND BIRTHPLACE, MAY 1972

Birthplace	Employed (b) ('000)	Unemployed (b)		Total labour force (b)		Not in the labour force ('000)	Civilian population aged 15 and over (a) ('000)
		Number ('000)	Per cent of labour force	Number ('000)	Per cent of popula- tion (c)		
MALES							
Born in Australia	2,706.5	38.6	1.4	2,745.1	80.9	648.7	3,393.8
Born outside Australia	1,010.1	22.4	2.0	1,032.5	87.2	151.4	1,183.9
Total	3,716.6	61.0	1.6	3,777.6	82.5	800.1	4,577.7
MARRIED WOMEN							
Born in Australia	730.9	15.6	2.1	746.5	32.2	1,571.3	2,317.8
Born outside Australia	333.7	12.2	3.5	345.8	44.0	440.5	786.4
Total	1,064.5	27.8	2.5	1,092.3	35.2	2,011.8	3,104.1
ALL FEMALES							
Born in Australia	1,301.6	33.0	2.5	1,334.7	37.0	2,275.7	3,610.3
Born outside Australia	444.1	16.1	3.5	460.3	44.4	575.5	1,035.8
Total	1,745.8	49.2	2.7	1,794.9	38.6	2,851.2	4,646.1
PERSONS							
Born in Australia	4,008.1	71.6	1.8	4,079.8	58.2	2,924.3	7,004.1
Born outside Australia	1,454.3	38.6	2.6	1,492.8	67.3	726.9	2,219.7
Total	5,462.4	110.2	2.0	5,572.6	60.4	3,651.2	9,223.8

(a) For a note on persons excluded see introductory note, page 1. (b) For definitions see page 2, paragraphs 2 to 4. (c) The labour force in each group as a percentage of the civilian population aged 15 years and over in the same group (labour force participation rate).

* Less than or based on a figure less than 4,000. See page 17, paragraph 11.

TABLE 3. - CIVILIAN LABOUR FORCE (a), BY AGE, MAY 1972

Age group (years)	Number ('000)				Per cent of population (b)			
	Males	Married women	All females	Persons	Males	Married women	All females	Persons
15-19	329.9	19.4	305.5	635.4	57.2	41.4	54.6	55.9
20-24	499.8	165.4	327.7	827.5	91.5	46.9	60.5	76.1
25-34	900.7	276.3	350.8	1,251.5	97.4	35.2	40.0	69.4
35-44	759.2	296.8	344.3	1,103.5	98.0	44.5	47.2	73.3
45-54	711.0	242.8	305.3	1,016.3	96.3	39.3	42.2	69.5
55-59	279.0	62.6	93.2	372.2	91.0	25.9	29.5	59.8
60-64	197.6	21.7	42.5	240.1	77.3	12.6	16.0	46.1
65 and over	100.5	7.4	25.5	126.0	22.1	3.3	4.0	11.6
Total	3,777.6	1,092.3	1,794.9	5,572.6	82.5	35.2	38.6	60.4

(a) Civilians aged 15 years and over. For definitions see page 2, paragraphs 2 to 4. (b) The labour force in each group as a percentage of the civilian population in the same group (labour force participation rate).

TABLE 4. - SEASONALLY ADJUSTED SERIES (a)

(Revised Series)

Month	Persons in the labour force (b) ('000)							
	Males		Married women		All females		Total	
	Original	Seasonally adjusted	Original	Seasonally adjusted	Original	Seasonally adjusted	Original	Seasonally adjusted
1964 Feb.	3,256.7	3,237.3	622.9	626.3	1,302.4	1,291.3	4,559.2	4,528.9
May	3,254.3	3,253.5	617.3	621.6	1,291.3	1,296.6	4,545.6	4,549.5
Aug.	3,252.2	3,261.7	627.4	628.6	1,288.6	1,299.5	4,540.8	4,563.3
Nov.	3,268.4	3,279.4	652.4	643.3	1,321.7	1,316.5	4,590.1	4,594.2
1965 Feb.	3,313.9	3,293.9	648.1	651.5	1,351.8	1,340.5	4,665.7	4,634.8
May	3,310.2	3,309.4	667.8	672.4	1,358.3	1,363.9	4,668.5	4,672.6
Aug.	3,319.8	3,329.9	674.6	676.0	1,363.1	1,374.2	4,682.9	4,705.9
Nov.	3,331.7	3,342.8	702.5	692.8	1,405.9	1,400.8	4,737.6	4,742.0
1966 Feb.	3,385.0	3,364.1	700.9	704.5	1,426.1	1,414.3	4,811.1	4,778.7
May	3,384.6	3,383.9	716.0	720.7	1,418.4	1,424.2	4,803.0	4,807.8
Aug.	3,389.8	3,400.8	742.5	744.5	1,447.3	1,458.6	4,837.1	4,861.1
Nov.	3,398.8	3,409.8	762.8	752.1	1,478.4	1,473.1	4,877.2	4,881.1
1967 Feb.	3,442.0	3,420.2	765.9	769.7	1,502.5	1,490.5	4,944.5	4,911.2
May	3,433.4	3,432.7	779.7	784.7	1,501.1	1,507.0	4,934.4	4,939.4
Aug.	3,438.5	3,450.6	797.6	800.3	1,516.8	1,528.5	4,955.3	4,980.8
Nov.	3,462.7	3,473.5	826.2	814.2	1,540.7	1,534.9	5,003.4	5,006.3
1968 Feb.	3,500.7	3,478.1	829.7	834.1	1,563.1	1,551.6	5,063.8	5,030.0
May	3,496.8	3,496.0	839.3	844.2	1,567.0	1,572.1	5,063.7	5,068.3
Aug.	3,499.9	3,513.2	851.2	855.1	1,570.7	1,583.6	5,070.6	5,098.5
Nov.	3,527.6	3,538.2	870.6	857.1	1,591.2	1,584.3	5,118.8	5,119.9
1969 Feb.	3,584.2	3,560.7	891.1	895.9	1,623.3	1,612.6	5,207.5	5,173.8
May	3,579.8	3,578.6	899.7	904.6	1,617.6	1,621.4	5,197.4	5,200.6
Aug.	3,581.5	3,596.0	920.7	926.0	1,630.0	1,644.8	5,211.5	5,242.4
Nov.	3,611.3	3,621.9	971.5	955.3	1,696.0	1,687.7	5,307.3	5,307.3
1970 Feb.	3,667.5	3,643.2	960.9	966.5	1,706.4	1,696.0	5,373.9	5,339.4
May	3,664.7	3,663.3	984.5	989.4	1,721.1	1,723.6	5,385.8	5,387.7
Aug.	3,664.3	3,679.7	1,003.5	1,010.5	1,727.2	1,744.8	5,391.5	5,425.7
Nov.	3,678.2	3,689.0	1,059.4	1,040.6	1,786.2	1,776.2	5,464.4	5,463.2
1971 Feb.(c)	3,721.5	3,696.6	1,045.4	1,051.9	1,791.5	1,781.1	5,513.0	5,477.7
May	<u>3,728.1</u>	<u>3,726.5</u>	<u>1,064.5</u>	<u>1,069.7</u>	<u>1,797.1</u>	<u>1,799.2</u>	<u>5,525.1</u>	<u>5,526.5</u>
Aug.(d)	3,709.4	3,725.2	1,067.1	1,075.0	1,771.1	1,790.2	5,480.5	5,516.6
Nov.	3,734.6	3,745.6	1,097.7	1,077.6	1,795.2	1,784.1	5,529.8	5,527.7
1972 Feb.(c)	3,781.3	3,755.9	1,080.3	1,087.5	1,801.3	1,791.5	5,582.6	5,547.1
May	3,777.6	3,775.9	1,092.3	1,097.5	1,794.9	1,796.7	5,572.6	5,573.8

For footnotes, see next page.

TABLE 4. - SEASONALLY ADJUSTED SERIES (a) - continued

(Revised Series)

Month	Participation rate (per cent) (e)				Unemployed persons ('000)					
	Males		Females		Males		Females		Total	
	Original	Seasonally adjusted	Original	Seasonally adjusted	Original	Seasonally adjusted	Original	Seasonally adjusted	Original	Seasonally adjusted
1964 Feb.	84.8	84.3	33.7	33.4	39.0	33.1	44.0	35.4	83.0	68.6
May	84.3	84.3	33.2	33.4	30.2	32.0	34.4	35.2	64.6	66.2
Aug.	83.9	84.1	33.0	33.2	24.0	26.6	28.4	33.6	52.4	60.0
Nov.	83.9	84.1	33.6	33.5	24.5	25.2	28.7	30.6	53.2	56.5
1965 Feb.	84.5	84.0	34.2	33.9	28.2	24.0	39.0	31.5	67.3	55.7
May	83.9	83.9	34.2	34.3	24.5	25.8	30.9	31.6	55.5	56.8
Aug.	83.8	84.1	34.1	34.3	27.8	30.8	26.5	31.3	54.2	62.0
Nov.	83.7	83.9	35.0	34.8	33.6	34.6	32.2	34.3	65.8	69.8
1966 Feb.	84.5	84.0	35.2	35.0	42.3	36.0	43.9	35.6	86.2	71.5
May	84.2	84.2	34.9	35.0	32.9	34.6	32.5	33.1	65.4	66.8
Aug.	83.8	84.1	35.3	35.5	36.0	39.9	30.9	36.5	66.9	76.5
Nov.	83.7	83.9	35.9	35.7	32.3	33.2	35.2	37.3	67.6	71.6
1967 Feb.	84.2	83.8	36.2	36.0	47.6	40.6	43.3	35.2	90.9	75.6
May	83.6	83.6	36.0	36.2	40.0	41.8	38.8	39.5	78.8	80.5
Aug.	83.4	83.6	36.2	36.5	38.1	42.4	34.8	41.1	72.9	83.5
Nov.	83.5	83.7	36.6	36.4	35.3	36.1	38.5	40.8	73.8	77.7
1968 Feb.	83.9	83.4	36.9	36.7	43.7	37.7	49.2	40.0	92.9	77.5
May	83.4	83.3	36.8	36.9	37.7	39.0	40.9	41.7	78.5	80.2
Aug.	83.0	83.3	36.7	37.0	32.1	36.0	35.0	41.5	67.1	77.2
Nov.	83.1	83.3	36.9	36.8	35.2	35.7	37.5	39.7	72.7	75.9
1969 Feb.	83.9	83.4	37.4	37.2	43.6	38.0	48.7	39.4	92.3	77.1
May	83.3	83.3	37.1	37.2	35.4	36.2	39.7	40.7	75.1	76.8
Aug.	83.0	83.2	37.3	37.5	31.8	36.1	34.3	40.8	66.1	76.6
Nov.	83.1	83.3	38.4	38.2	43.3	43.4	43.3	46.0	86.6	89.7
1970 Feb.	83.8	83.4	38.4	38.3	39.1	34.4	47.4	38.0	86.4	72.2
May	83.4	83.3	38.6	38.7	33.9	34.4	37.7	38.8	71.5	73.2
Aug.	83.0	83.3	38.6	38.9	33.5	38.4	31.5	37.7	65.0	76.0
Nov.	82.7	83.0	39.6	39.4	39.3	38.9	36.6	38.9	75.9	78.0
1971 Feb.	83.1	82.7	39.5	39.3	41.7	36.8	51.3	40.8	93.0	77.6
May	82.9	82.9	39.4	39.5	44.0	44.6	38.7	40.0	82.7	84.9
Aug.	82.3	82.5	38.7	39.1	39.3	45.2	35.8	43.0	75.1	88.2
Nov.	82.3	82.5	39.0	38.7	57.0	56.1	42.7	45.4	99.7	102.0
1972 Feb.	82.8	82.4	38.9	38.7	74.8	66.4	61.0	48.3	135.8	113.3
May	82.5	82.5	38.6	38.7	61.0	61.8	49.2	50.9	110.2	113.3

(a) For details of methods used in seasonally adjusting these series see "Seasonally Adjusted Indicators 1972" (Reference No. 1.10), issued on 6 July 1972. (b) Civilians aged 15 years and over. For definitions see page 2 paragraphs 2 to 4. (c) See page 3, paragraph 9. (d) Excludes trainee teachers, some of whom were classified in the labour force for earlier periods. See page 2, paragraph 7. (e) The labour force in each group as a percentage of the civilian population aged 15 years and over in the same group.

NOTE. See page 2, paragraph 7, regarding discontinuity of the series.

TABLE 5. - LABOUR FORCE PARTICIPATION RATES (a), BY AGE AND BIRTHPLACE, MAY 1972

(Per cent)

Age group (years)	Born in Australia			Born outside Australia		
	Males	Females	Persons	Males	Females	Persons
15-19	56.6	54.1	55.4	61.0	57.9	59.5
20-24	91.3	60.3	75.9	92.5	61.2	76.5
25-34	97.1	37.3	67.5	98.0	46.8	74.1
35-44	97.6	44.0	70.4	98.6	55.8	80.1
45-54	95.6	39.4	66.9	98.1	51.5	77.1
55-59	90.2	28.5	57.6	93.4	34.1	67.9
60-64	76.0	15.2	44.0	81.0	19.0	52.8
65 and over	21.8	4.1	11.2	23.3	4.0	13.0
Total	80.9	37.0	58.2	87.2	44.4	67.3

(a) The labour force in each group as a percentage of the civilian population aged 15 years and over in the same group.

TABLE 6. - EMPLOYED PERSONS (a), BY HOURS WORKED (b), MAY 1972

	Males	Married women	Other females(c)	All females	Persons
NUMBER ('000)					
Hours worked -					
0(d)	224.3	86.0	39.6	125.6	349.9
1-15	61.3	139.3	40.9	180.2	241.5
16-29	93.8	153.8	33.2	187.1	280.8
30-34	128.3	76.6	34.3	111.0	239.3
35-39	316.9	127.6	135.8	263.3	580.3
40	1,620.6	373.6	320.2	693.8	2,314.4
41-44	190.2	26.5	27.8	54.3	244.5
45-48	323.2	27.3	19.4	46.7	370.0
49 and over	758.0	53.9	29.9	83.8	841.8
Total	3,716.6	1,064.5	681.2	1,745.8	5,462.4
Full-time workers (e)	3,606.0	701.1	597.6	1,298.8	4,904.9
Part-time workers (e)	110.6	363.4	83.6	447.0	557.5

AVERAGE HOURS WORKED (f)

All industries -					
All employed persons	40.9	30.5	34.8	32.2	38.1
Full-time workers (e)	41.7	38.1	37.7	37.9	40.7
Part-time workers (e)	15.1	15.9	14.8	15.7	15.5
Manufacturing	40.1	34.6	37.8	35.5	38.9

(a) Civilians aged 15 years and over. For definition see page 2, paragraph 3. (b) Actual hours worked during survey week, not hours paid for. The figures may be affected by public holidays, leave, absenteeism; temporary absence from work due to sickness, accidents and industrial disputes; and work stoppages due to bad weather, plant breakdown, etc. (c) Never married, widowed and divorced. (d) Excludes persons laid off without pay for the whole of survey week; these persons are classified as unemployed. (e) For definitions see page 2, paragraph 5. (f) Persons with jobs who did not work during survey week have been included in the calculation of average hours worked. When recording hours worked, fractions of an hour are disregarded. This procedure results in slight lowering of the average hours figures.

TABLE 7. - EMPLOYED PERSONS (a) WHO WORKED LESS THAN 35 HOURS (b), BY REASON, MAY 1972

('000)

Reason for working less than 35 hours	Males	Married women	Other females (c)	All Females	Persons
USUALLY WORK 35 HOURS OR MORE					
Leave or holiday	264.5	67.6	48.1	115.6	380.1
Own illness or injury	89.6	18.9	13.7	32.6	122.2
Bad weather, breakdown, etc.	14.1	*	*	*	14.8
Began or lost job in survey week	9.7	*	*	*	15.0
On short time	5.7	*	*	*	7.5
Other reasons	13.5	*	*	*	14.2
Total	397.0	92.3	64.6	156.9	553.9
USUALLY WORK LESS THAN 35 HOURS					
Preferred part-time work	96.9	342.9	75.3	418.2	515.1
Lack of work	10.5	12.6	4.4	17.0	27.5
Other reasons	*	8.0	*	11.8	15.0
Total	110.6	363.4	83.6	447.0	557.5

(a) Civilians aged 15 years and over. For definition see page 2, paragraph 3. (b) See note (b) to Table 6.

(c) Never married, widowed and divorced.

* Less than 4,000. See page 17, paragraph 11.

TABLE 8. - EMPLOYED MARRIED WOMEN (a), BY INDUSTRY AND HOURS WORKED (b), MAY 1972

('000)

Industry group	Part-time workers (c)				Full-time workers (c)	Total
	Hours worked (b)			Total		
	Under 16	16-29	30-34			
Agriculture	10.6	13.9	3.7	28.2	23.5	51.7
Manufacturing	17.0	17.6	8.2	42.8	216.1	258.9
Commerce	39.7	35.9	10.9	86.5	160.8	247.4
Community and business services (d)	44.6	34.4	16.7	95.7	147.0	242.7
Amusement, hotels, personal service	40.6	22.8	7.1	70.5	61.8	132.3
Other industries	22.1	12.5	5.0	39.6	92.0	131.6
Total	174.4	137.3	51.7	363.4	701.2	1,064.5

(a) Civilians aged 15 years and over. For definition see page 2, paragraph 3. (b) See note (b) to Table 6.

(c) For definitions see page 2, paragraph 5. (d) Comprises law, order and public safety; religion and social welfare; health, hospitals, etc.; education; and other community and business services (including professional).

TABLE 9. - UNEMPLOYED PERSONS (a). BY AGE, MAY 1972

Age group (years)	Number unemployed ('000)				Per cent of labour force (b)			
	Males	Married women	All females	Persons	Males	Married women	All females	Persons
Total	61.0	27.8	49.2	110.2	1.6	2.5	2.7	2.0
15-19	14.6	*	14.7	29.4	4.4	*	4.8	4.6
20 and over	46.4	26.6	34.4	80.8	1.3	2.5	2.3	1.6
20-24	13.4	6.5	11.0	24.5	2.7	3.9	3.4	3.0
25-34	10.4	10.8	12.1	22.4	1.2	3.9	3.4	1.8
35-44	7.8	5.0	5.3	13.1	1.0	1.7	1.5	1.2
45-54	8.2	*	4.7	12.9	1.2	*	1.5	1.3
55 and over	6.5	*	*	7.9	1.1	*	*	1.1

(a) Civilians aged 15 years and over. For definition see page 2, paragraph 4. (b) The unemployed in each group as a percentage of the civilian labour force in the same group.

* Less than or based on a figure less than 4,000. See page 17, paragraph 11.

TABLE 10. - UNEMPLOYED PERSONS (a). BY AGE AND BIRTHPLACE, MAY 1972

Age group (years)	Number unemployed ('000)			Per cent of labour force (b)		
	Males	Females	Persons	Males	Females	Persons
BORN IN AUSTRALIA						
Total	38.6	33.0	71.6	1.4	2.5	1.8
15-19	12.0	12.6	24.6	4.2	4.8	4.5
20 and over	26.6	20.4	47.0	1.1	1.9	1.3
20-24	9.4	7.8	17.2	2.4	3.1	2.6
25-34	4.3	7.2	11.5	0.7	3.1	1.3
35 and over	12.9	5.4	18.3	0.9	0.9	0.9
BORN OUTSIDE AUSTRALIA						
Total	22.4	16.1	38.6	2.2	3.5	2.6
15-19	*	*	4.8	*	*	5.5
20 and over	19.7	14.0	33.8	2.0	3.3	2.4
20-24	4.1	*	7.3	3.8	*	4.1
25-34	6.0	4.9	10.9	2.2	4.2	2.8
35 and over	9.6	5.9	15.6	1.6	2.6	1.9

(a) Civilians aged 15 years and over. For definition see page 2, paragraph 4. (b) The unemployed in each group as a percentage of the civilian labour force in the same group.

* Less than or based on a figure less than 4,000. See page 17, paragraph 11.

TABLE 11. - UNEMPLOYMENT RATES (a). STATE CAPITAL CITIES AND OTHER AREAS
(Per cent)

Month	State capital cities (b)			Other areas		
	Males	Females	Persons	Males	Females	Persons
1971 February	1.2	2.6	1.7	1.0	3.4	1.7
May	1.2	1.8	1.4	1.2	2.9	1.7
August	1.1	1.8	1.3	1.0	2.6	1.4
November	1.5	1.9	1.6	1.6	3.3	2.1
1972 February	2.3	3.2	2.6	1.4	3.9	2.1
May	1.8	2.4	2.0	1.4	3.4	1.9

(a) The unemployed in each group as a percentage of the civilian labour force in the same group. (b) The figures relate to persons residing within the boundaries of the relevant Statistical Divisions. Explanatory notes on the delimitation of urban boundaries and maps showing the boundaries of the capital city Statistical Divisions were published in "Census of the Commonwealth of Australia, 30 June 1966 - Field Count Statement No. 4".

**TABLE 12. - UNEMPLOYED PERSONS (a) LOOKING FOR FULL-TIME WORK AND LOOKING FOR
PART-TIME WORK, MAY 1972**

	Males	Married women	Other females (b)	All females	Persons
Looking for full-time work (c)					
Number ('000)	58.6	17.6	19.5	37.1	95.7
Unemployment rate (d) (per cent)	1.6	2.5	3.2	2.8	1.9
Looking for part-time work (e)					
Number ('000)	*	10.2	*	12.1	14.5
Unemployment rate (d) (per cent)	*	2.7	*	2.6	2.5

(a) Civilians aged 15 years and over. For definition see page 2, paragraph 4. (b) Never married, widowed and divorced.
(c) Includes persons laid off for the whole week from full-time jobs. (d) The number of unemployed in each group as a percentage of the labour force in each group. (e) Includes persons laid off for the whole week from part-time jobs.
* Less than or based on a figure less than 4,000. See page 17, paragraph 11.

TABLE 13. - UNEMPLOYED PERSONS (a), BY DURATION OF UNEMPLOYMENT, MAY 1972

	Males	Married women	All females	Persons
Number unemployed ('000) -				
Under 2 weeks	10.8	6.7	10.0	20.9
2 weeks and under 4 weeks	17.0	7.4	12.4	29.5
4 " " " 8 weeks	13.7	4.2	9.0	22.7
8 " " " 13 weeks	7.3	4.9	9.3	16.6
13 weeks and over	12.1	4.6	8.4	20.5
Total	61.0	27.8	49.2	110.2
Average duration of unemployment (b) (weeks) -				
Aged 15-19 years	8.1	*	8.0	8.1
Aged 20 years and over	8.1	7.2	7.5	7.8
All unemployed persons	8.1	7.1	7.7	7.9

(a) Civilians aged 15 years and over. For definition see page 2, paragraph 4. (b) Periods of unemployment are recorded only in complete weeks; the averages shown are affected accordingly.

* Based on a figure less than 4,000. See page 17, paragraph 11.

TABLE 14. - UNEMPLOYED PERSONS (a), BY DURATION OF UNEMPLOYMENT (b), MAY 1972

(1,000)

Duration unemployment (b) (weeks)	Age (years)		Married	Not married(c)	Looking for --		Total
	15-19	20 and over			Full-time work (d)	Part-time work (e)	
MALES							
Under 2	*	8.1	*	7.1	10.2	*	10.8
2 and under 4	4.0	13.0	6.8	10.2	16.5	*	17.0
4 and under 13	4.7	16.4	9.0	12.0	20.1	*	21.0
13 and over	*	8.9	5.1	7.0	11.8	*	12.1
Total	14.6	46.4	24.7	36.3	58.6	*	61.0
FEMALES							
Under 2	*	7.5	6.7	*	7.5	*	10.0
2 and under 4	*	8.7	7.4	5.0	9.0	*	12.4
4 and under 13	6.1	12.3	9.1	9.2	14.6	*	18.3
13 and over	*	6.0	4.6	*	6.0	*	8.4
Total	14.7	34.4	27.8	21.4	37.1	12.1	49.2
PERSONS							
Under 2	5.3	15.5	10.4	10.5	17.7	*	20.9
2 and under 4	7.7	21.7	14.3	15.2	25.5	4.0	29.5
4 and under 13	10.7	28.6	18.1	21.3	34.7	4.6	39.4
13 and over	5.6	14.9	9.7	10.8	17.8	*	20.5
Total	29.4	80.8	52.5	57.7	95.7	14.5	110.2

(a) Civilians aged 15 years and over. For definition see page 2, paragraph 4. (b) Period from the time the person began looking for work, or was laid off, to the end of survey week. (c) Never married, widowed and divorced. (d) Includes persons laid off for the whole week from full-time jobs. (e) Includes persons laid off for the whole week from part-time jobs.

*Less than 4,000. See page 17, paragraph 11.

TABLE 15. - UNEMPLOYMENT RATES (a), BY INDUSTRY AND OCCUPATION, MAY 1972

(Per cent)

Industry group (b)	Unemployment rate	Occupation group (c)	Unemployment rate
Agriculture	1.2	Professional and technical workers	0.9
Manufacturing	2.0	Clerical workers	1.7
Building and construction	2.0	Sales workers	2.2
Transport and storage	1.5	Farmers, fishermen, timbergetters, etc.	1.3
Commerce	2.2	Transport and communication workers	1.9
Community and business services (d)	1.3	Craftsmen, production process workers and labourers n.e.c. (e)	2.1
Amusement, hotels, personal service, etc.	2.9	Service, sport and recreation workers	2.6
Other industries	1.2	Other occupations	*
No previous work experience	100.0	No previous work experience	100.0
Total	2.0	Total	2.0

(a) The unemployed in each group as a percentage of the civilian labour force in the same group. (b) Based on industry of last job. (c) Based on occupation of last job. (d) See note (d) to Table 8. (e) Includes miners, quarrymen and related workers.

*Based on a figure less than 4,000. See page 17, paragraph 11.

TABLE 16. - UNEMPLOYED PERSONS (a) : INDUSTRY, OCCUPATION AND DURATION OF UNEMPLOYMENT, MAY 1972

('000)

Industry group (b)	Number unemployed	Occupation group (c)	Number unemployed
Agriculture	4.9	Professional and technical workers	5.2
Manufacturing	29.2	Clerical workers	15.2
Under 2 weeks	5.3	Under 4 weeks	6.5
2 and under 4 weeks	6.7	4 and under 8 weeks	4.0
4 and under 8 weeks	6.6	Sales workers	10.8
8 and under 13 weeks	4.3	Under 4 weeks	5.0
Building and construction	9.9		
Under 4 weeks	5.3	Farmers, fishermen, timbergetters, etc.	6.0
Transport and storage	4.3	Transport and communication workers	6.4
Commerce	21.5	Craftsmen, production-process workers and labourers n.e.i. (e)	40.5
Under 4 weeks	9.8	Under 2 weeks	8.3
4 and under 8 weeks	4.8	2 and under 4 weeks	10.5
8 and under 13 weeks	*	4 and under 8 weeks	8.9
Community and business services (d)	9.2	8 and under 13 weeks	5.6
Under 4 weeks	4.7	Service, sport and recreation workers	12.4
Amusement, hotels, personal service, etc.	10.7	Under 4 weeks	6.4
Under 4 weeks	5.5	Other occupations	*
Other industries	8.6	No previous work experience	11.6
No previous work experience	11.6	Under 4 weeks	4.0
Under 4 weeks	4.0	4 and under 8 weeks	*
4 and under 8 weeks	*	8 and under 13 weeks	*
8 and under 13 weeks	*		
<u>Total</u>	110.2	<u>Total</u>	110.2

(a) Civilians aged 15 years and over. For definition see page 2, paragraph 4. (b) See note (b) to Table 15.
(c) See note (c) to Table 15. (d) See note (d) to Table 8. (e) See note (e) to Table 15.
*Less than 4,000. See page 17, paragraph 11.

TABLE 17. - PERSONS NOT IN THE LABOUR FORCE, BY MAJOR ACTIVITY
('000)

Month	Kept house	Went to school, etc.	Retired or voluntarily idle	Permanently unable to work	Institutionalised (a)	Total
MALES						
1971 February (b)	15.0	210.0	440.3	36.3	53.5	755.0
May	13.9	246.5	415.1	36.5	55.3	767.3
August	15.7	273.8	421.3	33.7	55.1	799.6
November	16.1	274.0	424.7	35.1	54.5	804.4
1972 February (b)	15.3	228.5	453.1	32.6	54.8	784.3
May	11.6	275.2	424.5	36.2	52.6	800.1
MARRIED WOMEN						
1971 February (b)	1,927.4	*	21.4	*	11.2	1,966.7
May	1,923.8	*	21.6	*	11.6	1,962.3
August	1,912.7	5.6	21.9	*	11.1	1,954.3
November	1,917.3	4.1	19.2	*	12.0	1,955.9
1972 February (b)	1,947.3	5.4	23.0	*	11.1	1,989.8
May	1,969.2	4.4	21.3	*	13.1	2,011.8
OTHER FEMALES (c)						
1971 February (b)	429.0	164.9	122.8	12.3	52.9	781.9
May	436.7	193.8	103.4	13.4	50.4	797.8
August	446.0	231.8	98.9	12.7	58.0	847.3
November	452.3	232.3	97.7	13.5	58.5	854.3
1972 February (b)	468.6	194.3	111.4	12.1	57.1	843.5
May	442.4	221.9	103.9	13.2	58.0	839.4
ALL FEMALES						
1971 February (b)	2,356.3	168.3	144.2	15.8	64.1	2,748.7
May	2,360.5	197.1	125.0	15.5	62.0	2,760.1
August	2,358.7	237.3	120.8	15.7	69.0	2,801.6
November	2,369.5	236.3	116.9	17.0	70.5	2,810.3
1972 February (b)	2,415.9	199.6	134.4	15.1	68.2	2,833.3
May	2,411.6	226.3	125.1	17.0	71.2	2,851.2
PERSONS						
1971 February (b)	2,371.3	378.3	584.5	52.0	117.6	3,503.7
May	2,374.5	443.5	540.1	52.0	117.3	3,527.4
August	2,374.4	511.1	542.2	49.4	124.1	3,601.2
November	2,385.6	510.3	541.6	52.1	125.0	3,614.7
1972 February (b)	2,431.3	428.1	587.5	47.7	123.0	3,617.6
May	2,423.2	501.5	549.6	53.2	123.7	3,651.2

(a) Comprises inmates of gaols, patients in hospitals, sanatoria, etc., for whom, for the purpose of the survey the institution was regarded as their dwelling. (b) See page 3, paragraph 9. (c) Never married, widowed and divorced.
* Less than 4,000. See page 17, paragraph 11.

NOTE. See page 2, paragraph 7, regarding discontinuity of the series.

TECHNICAL NOTE

Estimation Procedure

Estimates are derived from the quarterly population survey by use of a complex ratio estimation procedure, which ensures that the survey estimates conform to an independently estimated distribution of the population by age and sex, rather than to the age and sex distribution within the sample itself.

Redesign and Reselection of the Sample

2. The opportunity afforded by the availability of data from the 1971 Census of Population and Housing has been made the occasion for a revision of the sample design and a consequent reselection. The design of the sample on which the labour force survey was based has been thoroughly investigated and a more efficient sampling plan, which uses the results of the 1971 Census, has been adopted.

3. Before the redesign, a one per cent sample throughout Australia was used. About 40,000 private dwellings (houses, flats, etc.) as well as a sample of other dwellings (hotels, motels, etc.) were included. In the new sample the proportion of the population included varies from State to State, but, in aggregate, about two thirds of one per cent of the population of Australia is included. The new sample will consist of about 27,000 private dwellings as well as a sample of other dwellings.

4. In order to appraise changes in the estimates due to the introduction of the new sample, it is being phased in over three surveys. In the May 1972 survey half of the new sample from metropolitan areas replaced half of the old metropolitan sample. In August 1972 the other half of the new metropolitan sample will be introduced and half of the new sample from extra-metropolitan areas will replace half of the old extra-metropolitan sample. In November 1972 the changeover will be completed with the introduction of the remaining half of the new extra-metropolitan sample. In May 1972 the total sample consisted of about 36,000 dwellings.

Reliability of the estimates

5. Since the estimates in this bulletin are based on a sample, they may differ from the figures that would have been obtained from a complete census using the same questionnaires and procedures. One measure of the likely difference is given by the standard error, which indicates the extent to which an estimate might have varied by chance because only a sample, and not the whole population, was enumerated. There are about two chances in three that a sample estimate will differ by less than one standard error from the figure that would have been obtained from a comparable complete enumeration, and about nineteen chances in twenty that the difference will be less than two standard errors.

6. Space does not allow for the separate indication of the standard errors of all estimates in this bulletin. A table of standard errors which is intended to be of general application is given below (Table A). Standard errors have not yet been calculated for the May 1972 survey results, and therefore the standard errors shown are, strictly speaking, applicable only to results based on the old sample. However, the decrease in sample size and the increase in efficiency resulting from the redesign would have opposite effects on the standard errors and it is considered that the standard errors in Table A will still give a reasonable indication of the sampling variability of the May survey results.

7. The standard errors in these tables are averages based on calculations for a limited number of past surveys and are also averages over a wide range of labour force characteristics. These figures thus give not a precise measure but an indication of the magnitude of the standard error of any particular estimate for any particular survey. An example of the use of Table A is as follows: if the estimate obtained from the sample is 100,000 and the standard error is 3 per cent of the estimate, i.e. 3,000, there are about two chances in three that the true figure is within the range 97,000 to 103,000 and about nineteen chances in twenty that this figure is between 94,000 and 106,000.

8. The quarter-to-quarter change in the level of an estimate is also subject to sampling variability. The standard error of the change depends on the standard error of the level of the estimate, rather than on the change itself. Final estimates of the standard errors of movement have not yet been calculated, but an indication of the magnitude of standard errors of quarter-to-quarter change up to the February 1972 survey is given in Table B, below. The estimates of standard error of quarter-to-quarter change apply only to estimates of change between two consecutive quarters. Changes between corresponding quarters of consecutive years, or between two other non-consecutive quarters, will generally be subject to somewhat greater sampling variability than is indicated in the table below. Furthermore, as half of the old sample was phased out in the metropolitan areas for the May 1972 survey, the standard errors of the changes from February 1972 to May 1972 will be greater than indicated in Table B, and care should be taken in placing significance on any changes in estimates between these two quarters. An example of the use of Table B is as follows: if the estimates for two successive quarters were 100,000 and 110,000, then from Table A it can be seen that the standard errors of these two estimates would be of the order of 3,000, and from Table B that the standard error of the quarter-to-quarter change would be 3,600. That is, there are about two chances in three that the true quarter-to-quarter change lies between 6,400 and 13,600 and about nineteen chances in twenty that it lies between 2,800 and 17,200.

TABLE A

STANDARD ERRORS OF QUARTERLY ESTIMATES

Size of estimate (persons)	Approximate standards error of estimates	
	Persons	Per cent of estimate
4,000	750	19
5,000	850	17
10,000	1,100	11
20,000	1,400	7
50,000	2,000	4
100,000	3,000	3
200,000	4,000	2
500,000	5,000	1
1,000,000	5,500	0.6
2,000,000	8,000	0.4

TABLE B

STANDARD ERRORS OF ESTIMATES OF QUARTER-TO-QUARTER CHANGE (Persons)

Standard error of quarterly level	Standard error of quarter-to-quarter change
1,000	1,300
2,000	2,500
3,000	3,600
4,000	4,300
5,000	4,700
6,000	5,000
7,000	5,200
8,000	5,300

9. The standard errors of estimates relating to agricultural employment are generally somewhat higher than the standard errors of other estimates of the same magnitude. Estimates for females also tend to have higher standard errors than estimates of equivalent size for males in similar employment categories.

10. The reliability of an estimated percentage, computed by using sample data for both numerator and denominator, depends upon both the size of the numerator and the size of the denominator, but percentages quoted in this bulletin, and any other percentages calculated from figures presented herein, have generally somewhat lower per cent standard errors than the per cent standard error of the estimates which form the numerator of the percentage. The per cent standard errors of the numerators can be obtained from Table A.

11. As the standard errors in Tables A and B show, the smaller the estimate the higher is the relative standard error. Very small estimates would thus be subject to such high standard errors (relative to the size of the estimate) as to detract seriously from their value for most reasonable uses. In the tables in this bulletin, estimates less than 4,000 have not been shown. Although figures for these small components can in some cases be derived by subtraction, they should not be regarded as reliable.

12. The imprecision due to sampling variability, which is measured by the standard error, should not be confused with inaccuracies that may occur because of imperfections in reporting by interviewers and respondents. Inaccuracies of this kind are referred to as the non-sampling error, and they may occur in any enumeration, whether it be a full count or only a sample. Every effort is made to reduce the non-sampling error to a minimum by careful design of questionnaires, intensive training and supervision of interviewers and efficient operating procedures.

J. P. O'NEILL
COMMONWEALTH STATISTICIAN

COMMONWEALTH BUREAU OF CENSUS AND STATISTICS

CANBERRA, A.C.T. 2600

23 AUGUST 1972

NOTE. Inquiries concerning these statistics may be made in Canberra by telephoning 63 9111 extension 2347 or, in each State capital, by telephoning the office of the Bureau of Census and Statistics.