

CHAPTER 4

UNEMPLOYMENT

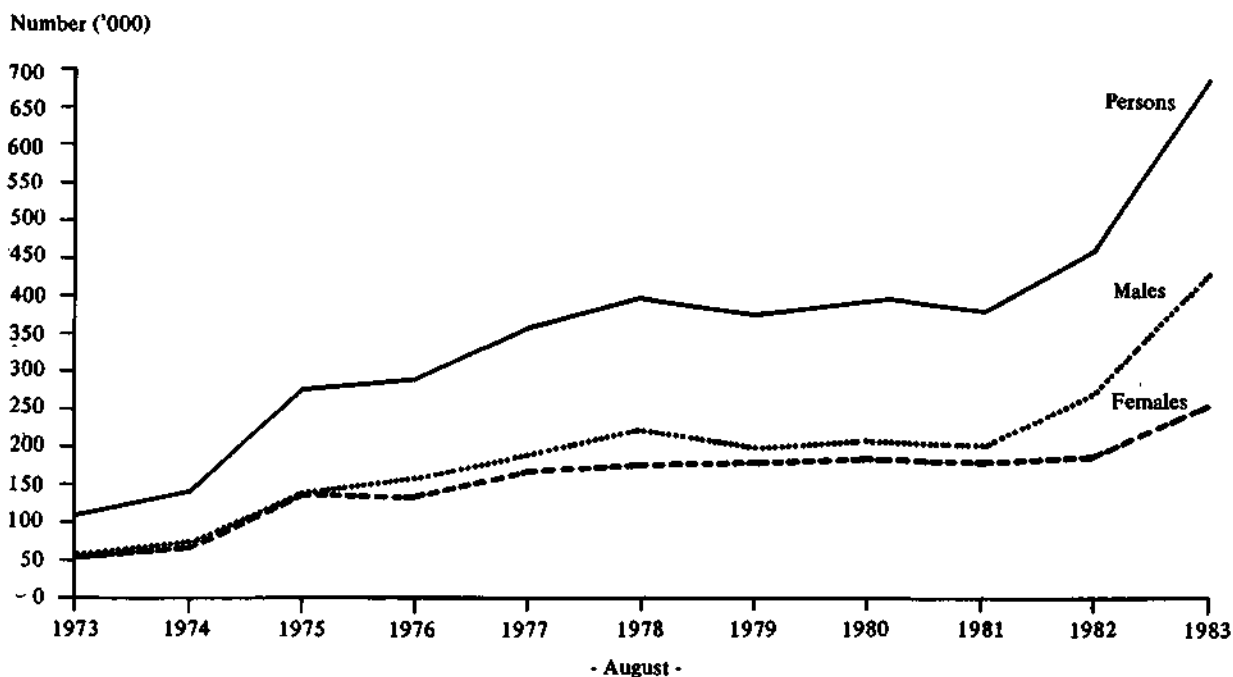
The unemployment statistics presented in this chapter have been derived from ABS sources, primarily the ABS monthly labour force survey and its supplementaries.

Broadly a person is considered to be unemployed if he or she satisfies three criteria — not employed, available for work, and taking active steps to find work. The employed and the unemployed together make up the labour force.

Measures of unemployment provide an indicator of the underutilization of labour. The two most important measures are the number of persons unemployed and the unemployment rate. The unemployment rate is defined as the number of unemployed expressed as a percentage of the size of the labour force. The most important characteristics of the unemployed presented include their demographic composition, the duration of unemployment, their educational qualifications and the difficulties experienced in finding work. The unemployment characteristics of families, i.e. unemployment rates of different family members and number of families with some unemployment are also shown. The 1982 Income and Housing Survey provides information on the economic circumstances of persons experiencing unemployment.

Some summary statistics on job vacancies are also included in this chapter.

CHART 4.a. UNEMPLOYED PERSONS : AUGUST 1973 TO AUGUST 1983



Source: *The Labour Force, Australia* (6203.0)

TABLE 4.1. UNEMPLOYED PERSONS: WHETHER LOOKING FOR FULL-TIME OR PART-TIME WORK, AUGUST 1973, 1976, 1980 AND 1983

Looking for	August			
	1973	1976	1980	1983
NUMBER ('000)				
Males—				
Full-time work	38.3	142.7	193.9	409.5
Part-time work	13.0	13.9	15.7	20.2
Total	51.3	156.6	209.6	429.7
Females—				
Full-time work	28.8	94.1	140.7	197.9
Part-time work	25.6	42.0	44.2	59.3
Total	54.5	136.1	184.9	257.1
Persons—				
Full-time work	67.2	236.8	334.6	607.4
Part-time work	38.6	55.9	59.9	79.5
Total	105.8	292.7	394.5	686.8
UNEMPLOYMENT RATE (per cent)				
Males—				
Full-time work	1.0	3.7	4.9	10.1
Part-time work	8.4	7.5	7.0	7.7
Total	1.3	3.9	5.0	9.9
Females—				
Full-time work	2.0	6.4	8.7	11.7
Part-time work	4.5	5.7	5.1	6.5
Total	2.7	6.2	7.4	9.9
Persons—				
Full-time work	1.3	4.5	6.0	10.5
Part-time work	5.3	6.1	5.5	6.8
Total	1.8	4.7	5.9	9.9

Source: The Labour Force, Australia (6203.0).

CHART 4.b. UNEMPLOYED PERSONS: PROPORTION OF THE CIVILIAN LABOUR FORCE, AUGUST 1973 TO AUGUST 1983

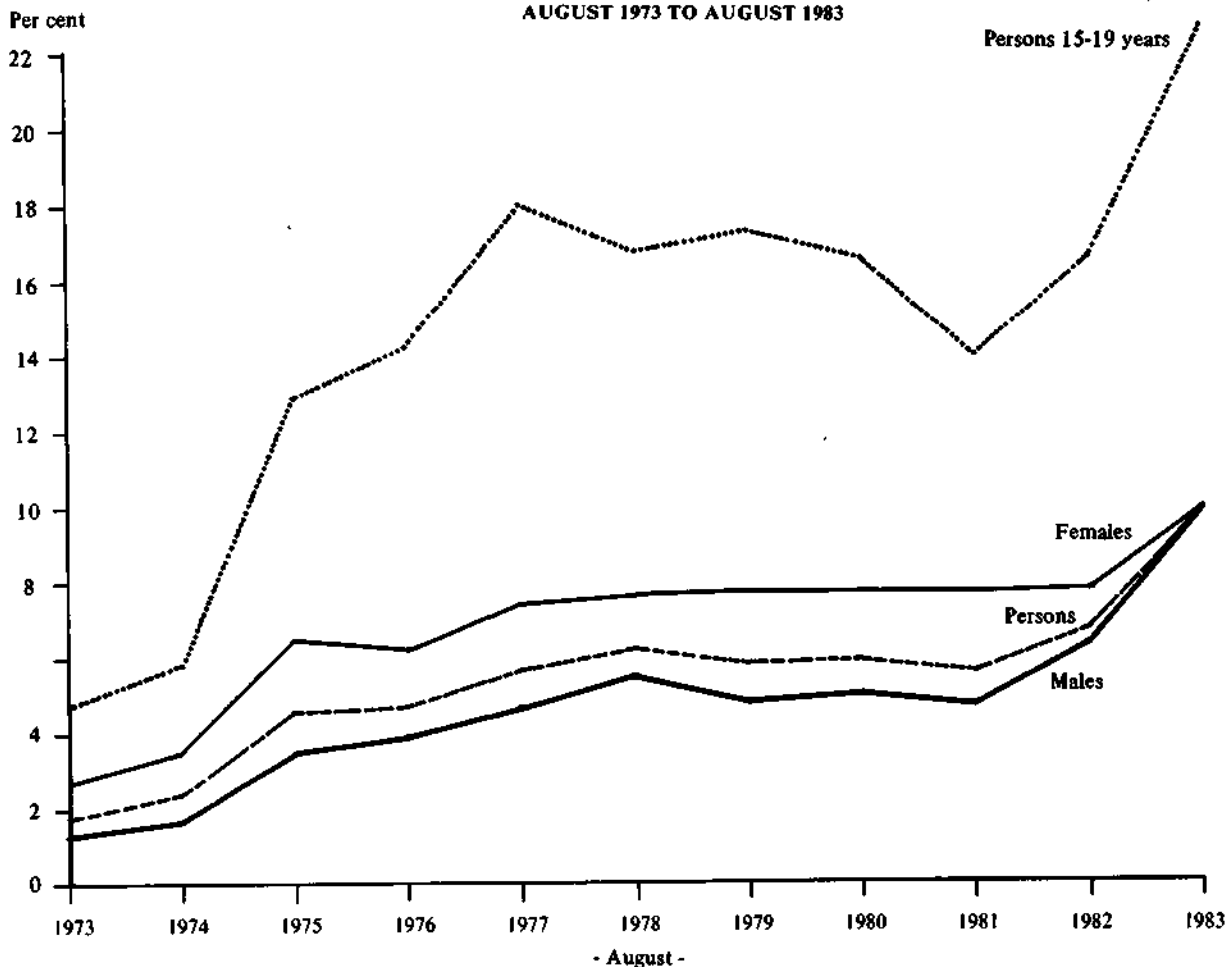
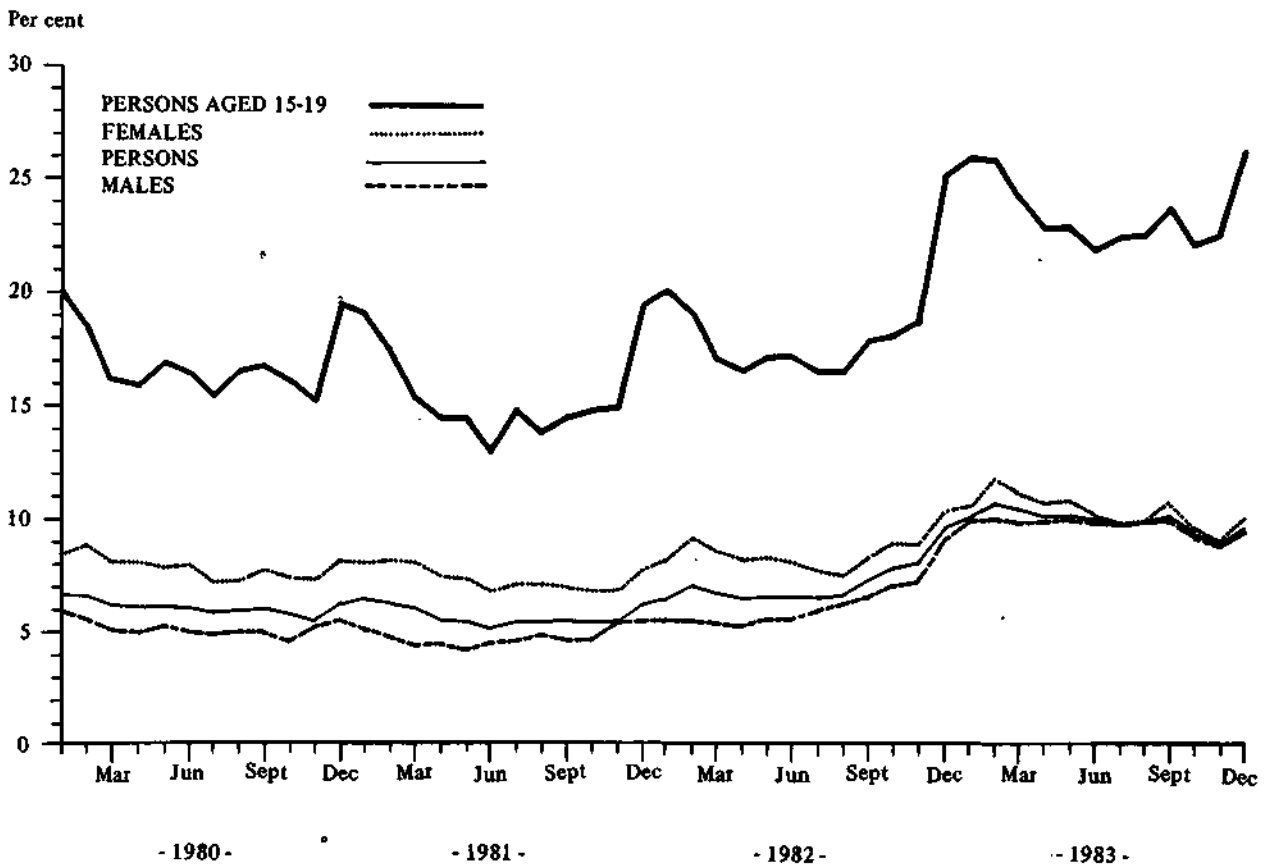


TABLE 4.2. UNEMPLOYED PERSONS: AGE, UNEMPLOYMENT RATES, AUGUST 1973, 1976, 1980 AND 1983
(Per cent)

Age group (years)	August			
	1973	1976	1980	1983
MALES				
15-19	4.6	12.7	14.7	23.0
20-24	2.1	6.5	8.5	17.3
25-34	0.8	2.8	3.9	9.1
35-44	0.9	2.3	2.5	6.0
45-54	0.7	2.3	2.8	5.9
55 and over	0.9	1.9	2.9	6.5
Total	1.3	3.9	5.0	9.9
FEMALES				
15-19	4.9	15.8	18.8	22.2
20-24	2.5	6.3	9.1	11.5
25-34	2.3	5.1	5.7	9.5
35-44	3.2	4.0	4.3	6.8
45-54	1.6	3.2	3.4	4.8
55 and over	*	*	2.2	*
Total	2.7	6.2	7.4	9.9

Source: *The Labour Force, Australia* (6203.0).

CHART 4.c. UNEMPLOYED PERSONS : UNEMPLOYMENT RATES, MARCH 1980 TO DECEMBER 1983



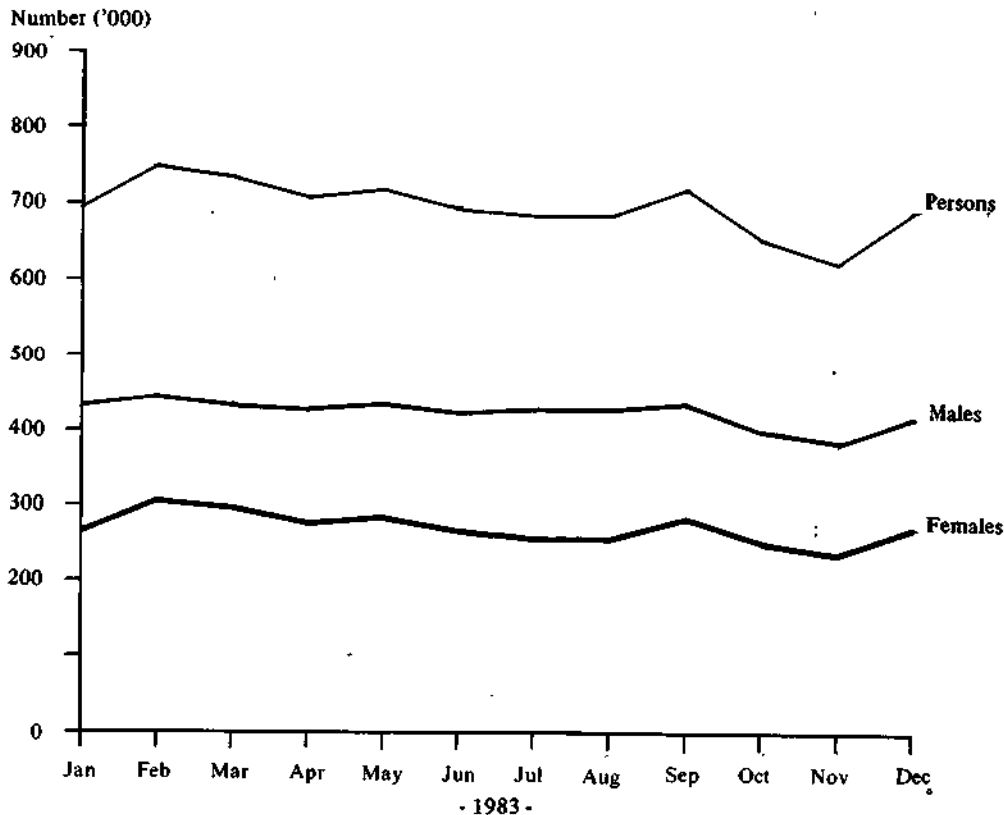
Source: *The Labour Force, Australia* (6203.0)

TABLE 4.3. UNEMPLOYED PERSONS: BIRTHPLACE BY AGE, AUGUST 1983

	Number unemployed ('000)			Unemployment rate (per cent)		
	Males	Females	Persons	Males	Females	Persons
BORN IN AUSTRALIA						
Total	293.1	180.0	473.1	9.3	9.3	9.3
Looking for full-time work	278.0	136.2	414.2	9.4	11.0	9.9
Looking for part-time work	15.1	43.9	59.0	7.6	6.3	6.6
Aged 15-19	74.7	64.9	139.6	22.9	21.2	22.1
Aged 20 and over	218.3	115.2	333.5	7.7	7.1	7.5
20-24	79.9	40.4	120.3	16.1	10.3	13.5
25-34	73.7	39.6	113.3	8.1	8.2	8.1
35-44	30.1	23.5	53.6	4.7	6.0	5.2
45-54	19.8	10.4	30.0	4.5	4.2	4.4
55 and over	15.1	*	16.7	4.3	*	3.5
Aged 15-64	292.2	180.0	472.3	9.4	9.4	9.4
BORN OUTSIDE AUSTRALIA						
Total	136.6	77.1	213.7	11.5	11.7	11.6
Looking for full-time work	131.6	61.7	193.3	11.7	13.9	12.3
Looking for part-time work	5.1	15.4	20.5	8.1	7.2	7.4
Aged 15-19	12.0	14.8	26.8	23.3	27.9	25.6
Aged 20 and over	124.6	62.3	187.0	11.0	10.3	10.7
20-24	22.7	13.6	36.3	22.9	17.8	20.6
25-34	34.8	23.1	57.9	12.3	13.2	12.7
35-44	28.9	16.1	44.9	8.5	8.5	8.5
45-54	21.5	7.0	28.5	8.5	5.9	7.7
55 and over	17.5	*	20.1	10.3	*	9.2
Aged 15-64	135.6	77.1	212.7	11.5	11.8	11.6

Source: The Labour Force, Australia, August 1983 (6203.0).

CHART 4.d. UNEMPLOYED PERSONS : JANUARY 1983 TO DECEMBER 1983



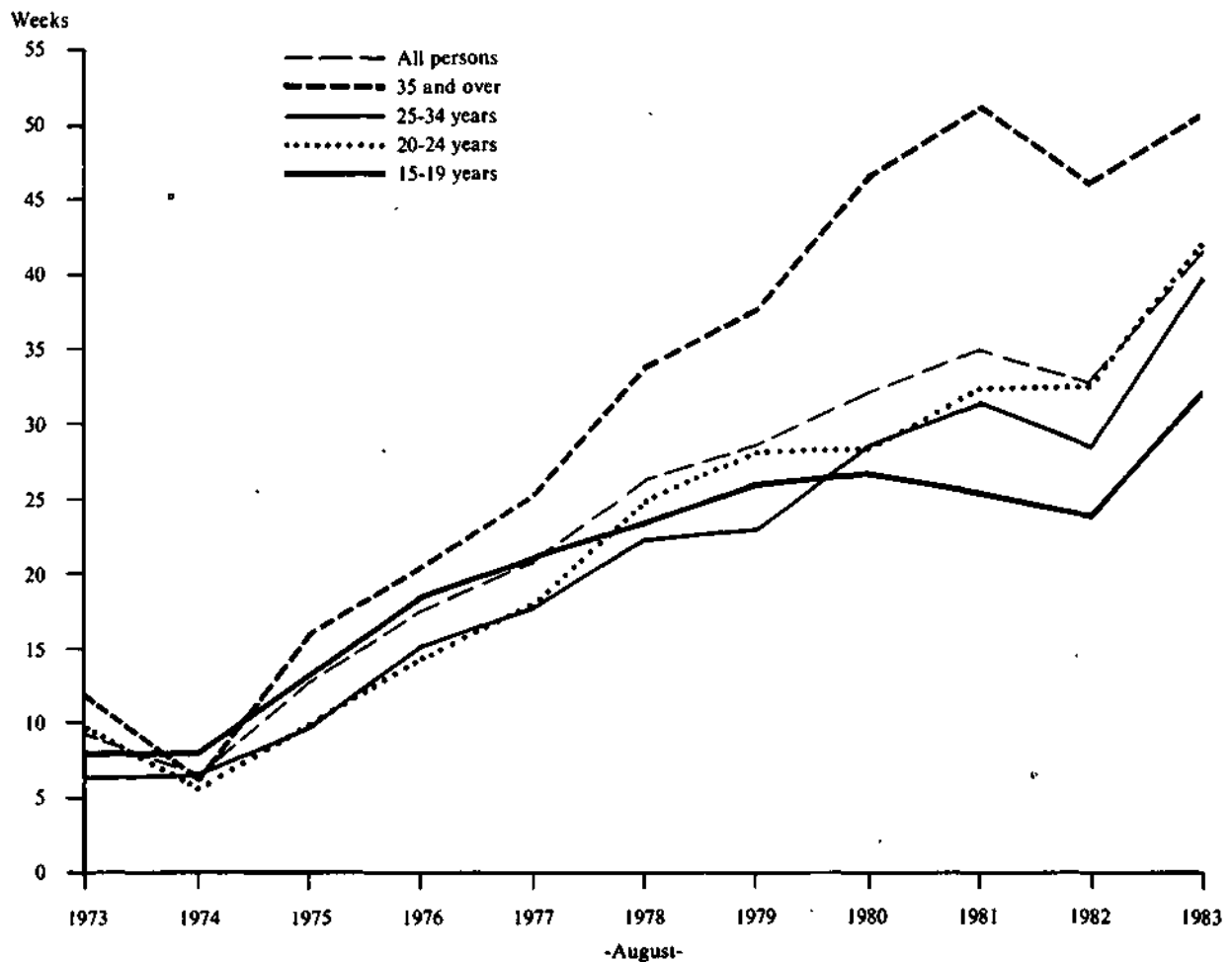
Source: The Labour Force, Australia (6203.0)

TABLE 4.4. UNEMPLOYED PERSONS: DURATION OF UNEMPLOYMENT, AUGUST 1973, 1976, 1980 AND 1983
(^{' 000})

Duration of unemployment (weeks)	August			
	1973	1976	1980	1983
Under 2	23.2	29.0	32.0	32.4
2 and under 4	27.4	45.7	43.9	49.7
4 and under 8	21.3	51.3	55.7	73.9
8 and under 13	12.8	48.9	43.1	65.9
13 and under 26	10.5	45.0	62.2	103.1
26 and under 39	5.1	36.1	65.5	123.5
39 and under 52	*	11.9	13.7	49.6
Under 1 year	102.0	267.8	316.2	498.1
52 and under 65	*	11.6	23.0	61.3
65 and over	*	13.3	55.3	127.4
Total	105.8	292.7	394.5	686.8
—weeks—				
Median duration	n.a.	n.a.	32.0	41.4
Average (mean) duration	9.3	17.5	15.0	26.1

Source: *The Labour Force, Australia* (6203.0).

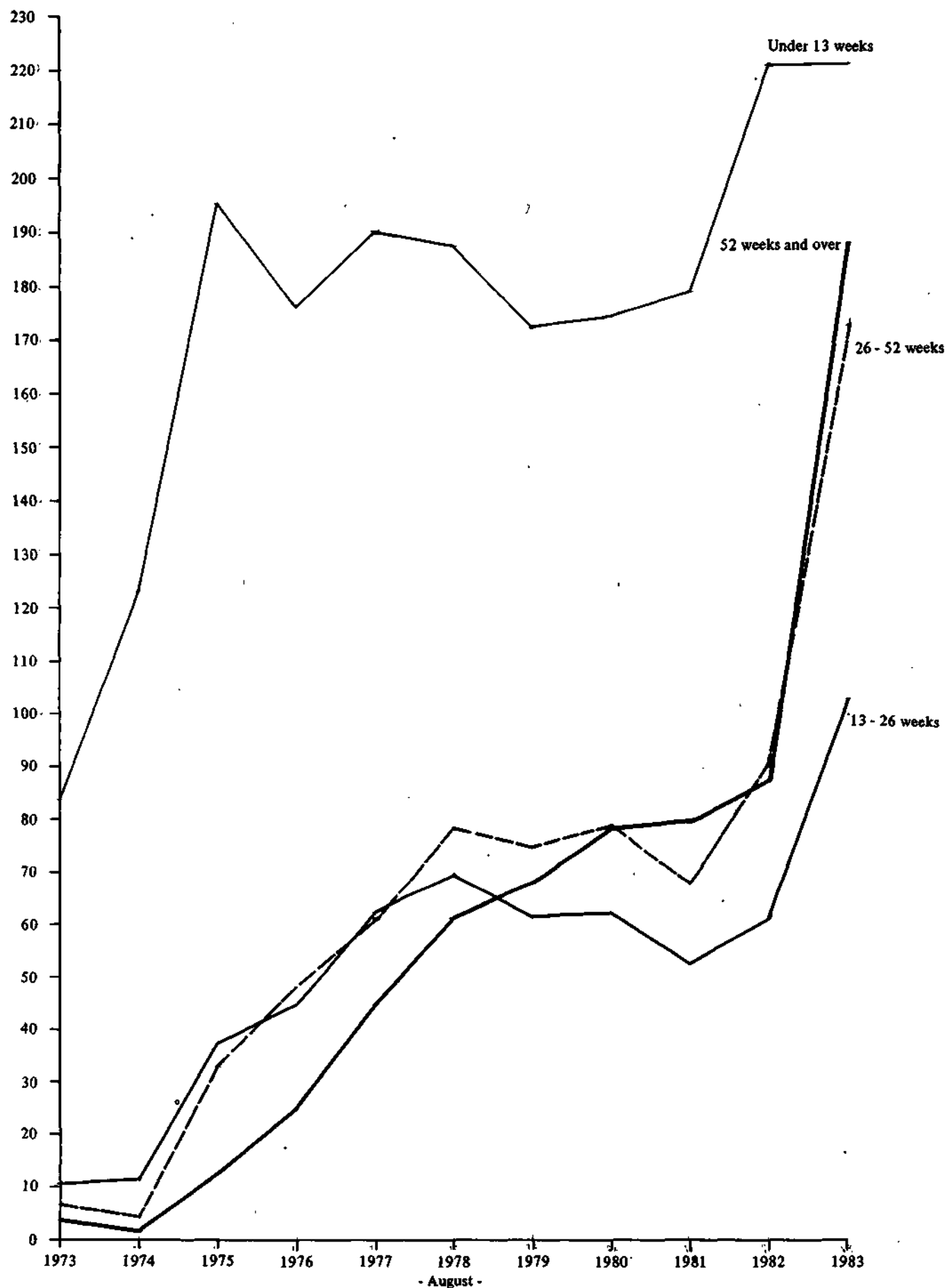
CHART 4.e. UNEMPLOYED PERSONS: AVERAGE DURATION OF UNEMPLOYMENT AND AGE, AUGUST 1973 TO AUGUST 1983



NOTE Estimates for average duration of unemployment represent current spells of unemployment, not completed spells.
Source: *The Labour Force, Australia* (6203.0)

CHART 4.f. UNEMPLOYED PERSONS : DURATION OF UNEMPLOYMENT AUGUST 1973 TO AUGUST 1983

Number of unemployed persons ('000)



Source: The Labour Force, Australia (6203.0)

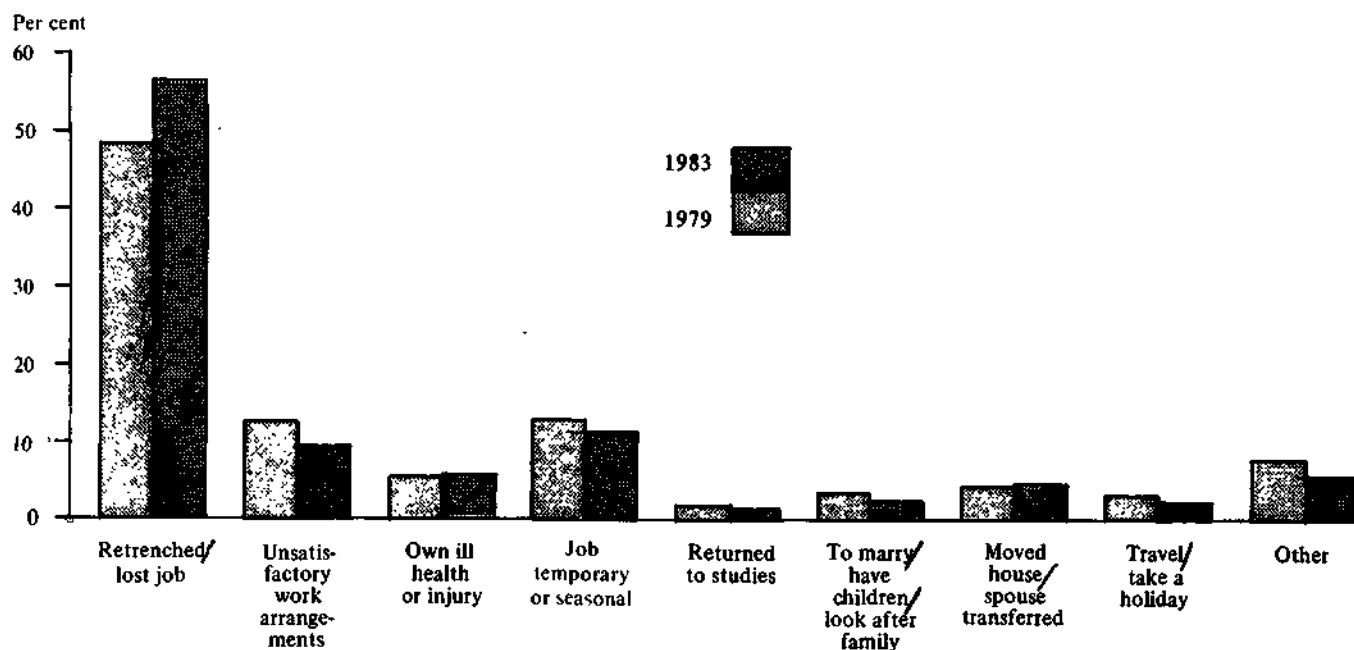
TABLE 4.5. UNEMPLOYED PERSONS: INDUSTRY AND OCCUPATION OF LAST FULL-TIME JOB, AUGUST 1983

	Number ('000)			Unemployment rate (per cent)		
	Males	Females	Persons	Males	Females	Persons
Had worked full time for two weeks or more in the last two years	356.4	168.5	524.9	7.4	4.7	6.4
Industry division or subdivision—						
Agriculture and services to agriculture	13.2	*	16.7	4.4	*	4.2
Manufacturing	95.4	24.8	120.2	10.1	8.1	9.6
Food, beverages and tobacco	17.3	6.6	23.9	10.9	11.8	11.1
Metal products	24.2	*	25.5	12.1	*	11.4
Other manufacturing	53.9	16.9	70.7	9.2	7.4	8.7
Construction	61.6	*	63.5	15.1	*	14.1
Wholesale trade	19.7	4.8	24.5	7.3	4.5	6.5
Retail trade	46.7	33.5	80.2	9.7	7.3	8.5
Transport and storage	12.9	*	14.5	4.0	*	3.8
Finance, property and business services	11.6	10.6	22.2	3.7	3.7	3.7
Community services	10.1	14.5	24.6	2.5	2.1	2.2
Recreation, personal and other services	20.4	14.4	34.7	11.0	6.0	8.2
Other industries	20.4	6.6	27.0	3.6	3.9	3.6
Occupation group—						
Professional, technical, etc.	9.5	8.0	17.5	1.8	1.8	1.8
Administrative, executive, and managerial	10.2	*	11.7	2.7	*	2.7
Clerical	9.6	36.6	46.2	3.0	4.3	4.0
Sales	21.5	22.4	44.0	7.8	7.1	7.4
Farmers, fishermen, timbergetters, etc.	20.5	*	23.9	5.5	*	5.1
Miners, quarryworkers, etc.	*	*	*	*	*	*
Transport and communication	18.0	*	20.0	5.9	*	5.6
Tradesmen, production-process workers and labourers, n.e.c.	197.6	20.8	218.4	11.3	9.1	11.1
Service, sport and recreation	21.8	21.2	43.0	8.7	5.3	6.6
Other(a)	69.5	81.9	151.4
Looking for first job	44.4	52.7	97.0
Other	25.1	29.2	54.4
Stood down	*	6.7	10.5
Total	429.7	257.1	686.8	9.9	9.9	9.9

(a) Had never worked for two weeks or more in a full-time job or had not done so in the last two years. Industry and occupation were not obtained for these persons.

Source: The Labour Force, Australia, August 1983 (6203.0).

CHART 4.g. PERSONS LOOKING FOR WORK WHO WERE WAGE OR SALARY EARNERS IN THEIR LAST FULL-TIME JOB AND WHO FINISHED WORKING IN THAT JOB DURING 1979 AND 1983, THE TWO YEARS PRIOR TO THE SURVEY : REASON LEFT LAST JOB



Source: *Characteristics of Persons Looking for Work, Australia, July 1983 (6222.0)*

TABLE 4.6 PERSONS LOOKING FOR WORK WHO WERE WAGE OR SALARY EARNERS AND WHO FINISHED WORKING IN THAT JOB DURING THE LAST TWO YEARS PRIOR TO THE SURVEY(a): REASON FOR LEAVING LAST JOB, JULY 1979 AND JULY 1983 (Per cent)

	July 1979			July 1983		
	Males	Females	Persons	Males	Females	Persons
Retrenched/lost job	53.3	40.0	48.2	62.7	40.5	56.5
Unsatisfactory work arrangements	12.0	13.7	12.7	8.4	12.1	9.4
Own ill health or injury	5.2	6.0	5.5	6.2	4.5	5.7
Job was temporary or seasonal	13.8	11.6	12.9	9.7	15.0	11.2
Returned to studies	*	*	1.9	1.3	*	1.6
To marry/have children/look after family	*	7.6	3.3	*	7.1	2.3
Changed residence/spouse transferred	*	8.5	4.6	3.2	8.9	4.8
Travel/take a holiday	2.2	4.5	3.1	2.0	3.8	2.5
Other	9.2	5.7	7.8	6.0	5.6	5.9
Total	100.0	100.0	100.0	100.0	100.0	100.0

(a) Their last full-time job lasting two weeks or more.

Source: *Characteristics of Persons Looking for Work, Australia, July 1983 (6222.0)*.

TABLE 4.7. PERSONS LOOKING FOR WORK(a): ACTIVE STEPS TAKEN TO FIND WORK AND WHETHER LOOKING FOR FULL-TIME OR PART-TIME WORK, JULY 1983

	Looking for full-time work				Looking for part-time work			
	Males	Females	Persons		Males	Females	Persons	
Active steps taken to find work during current period of unemployment	—'000—		'000	Per cent	—'000—		'000	per cent
Registered with the CES and—								
Took no other active steps	10.1	5.7	15.9	2.7	*	*	*	*
Contacted prospective employers	339.6	127.1	466.7	78.9	5.2	12.8	18.0	22.6
Took other active steps(b)	24.0	9.6	33.6	5.7	*	*	*	*
Total registered with the CES	373.7	142.4	516.2	87.2	6.4	15.4	21.9	27.5
Not registered with the CES and—								
Contacted prospective employers	26.6	41.9	68.5	11.6	12.5	37.3	49.7	62.7
Took other active steps(b)	*	4.4	7.0	1.2	*	5.2	7.7	9.7
Total not registered with the CES	29.2	46.4	75.5	12.8	15.0	42.5	57.7	72.4
Total	402.9	188.8	591.7	100.0	21.4	58.1	79.3	100.0

(a) The number of persons looking for work differs from the number of unemployed persons shown elsewhere in that the latter includes persons who were waiting to be called back to a full-time or part-time job from which they had been stood down. (b) Includes persons who contacted friends, relatives or other persons and those who registered with an employment agency other than the CES.

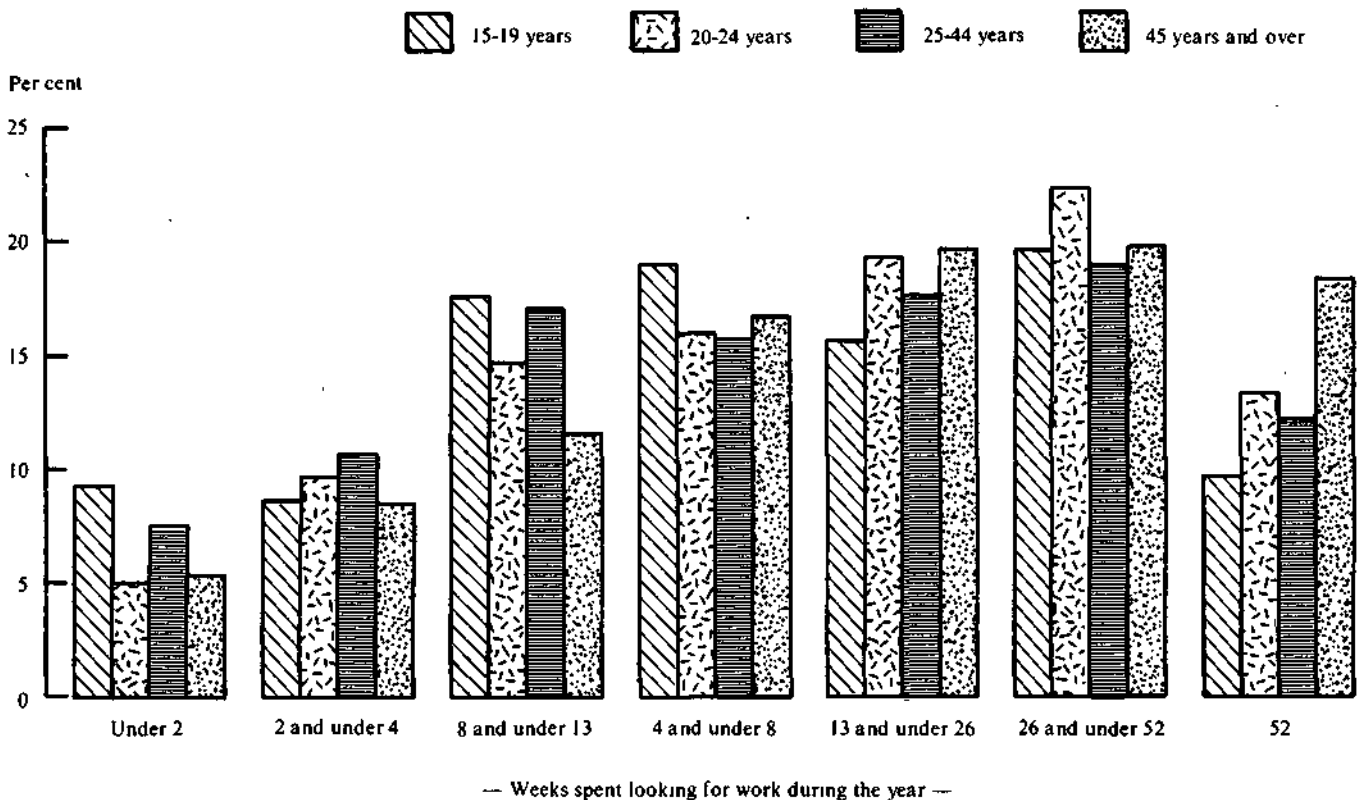
Source: *Characteristics of Persons Looking for Work, Australia, July 1983 (6222.0)*.

**TABLE 4.8. PERSONS WHO LOOKED FOR WORK AT SOME TIME DURING THE YEAR ENDING FEBRUARY 1983:
NUMBER OF SPELLS OF LOOKING FOR WORK AND WEEKS SPENT LOOKING FOR WORK DURING THE YEAR
(' 000)**

Number of spells of looking for work	Weeks spent looking for work						52	Total
	1 and under 2	2 and under 4	4 and under 8	8 and under 13	13 and under 26	26 and under 52		
MALES								
One	39.6	62.2	99.3	106.5	104.8	93.7	105.0	611.0
Two	..	6.8	12.1	22.0	34.9	56.3	..	132.1
Three or more	..	*	9.7	11.8	17.3	19.0	..	59.5
Total	39.6	70.7	121.1	140.2	157.0	169.0	105.0	802.5
FEMALES								
One	66.0	60.1	93.4	82.9	73.7	77.6	79.4	533.1
Two	..	8.1	10.4	13.0	20.4	33.7	..	85.5
Three or more	..	*	12.5	11.8	10.3	14.4	..	51.2
Total	66.0	70.3	116.2	107.7	104.4	125.7	79.4	669.8
PERSONS								
One	105.6	122.3	192.6	189.4	178.5	171.2	184.4	1,144.0
Two	..	14.9	22.4	35.0	55.3	89.9	..	217.6
Three or more	..	*	22.2	23.6	27.6	33.5	..	110.7
Total	105.6	141.0	237.3	247.9	261.4	294.6	184.4	1,472.3

Source: Labour Force Experience, Australia, During the Year Ending February 1983 (6206.0).

**CHART 4.b. PERSONS WHO LOOKED FOR WORK AT SOME TIME DURING THE YEAR ENDING FEBRUARY 1983:
WEEKS SPENT LOOKING FOR WORK DURING THE YEAR AND AGE**

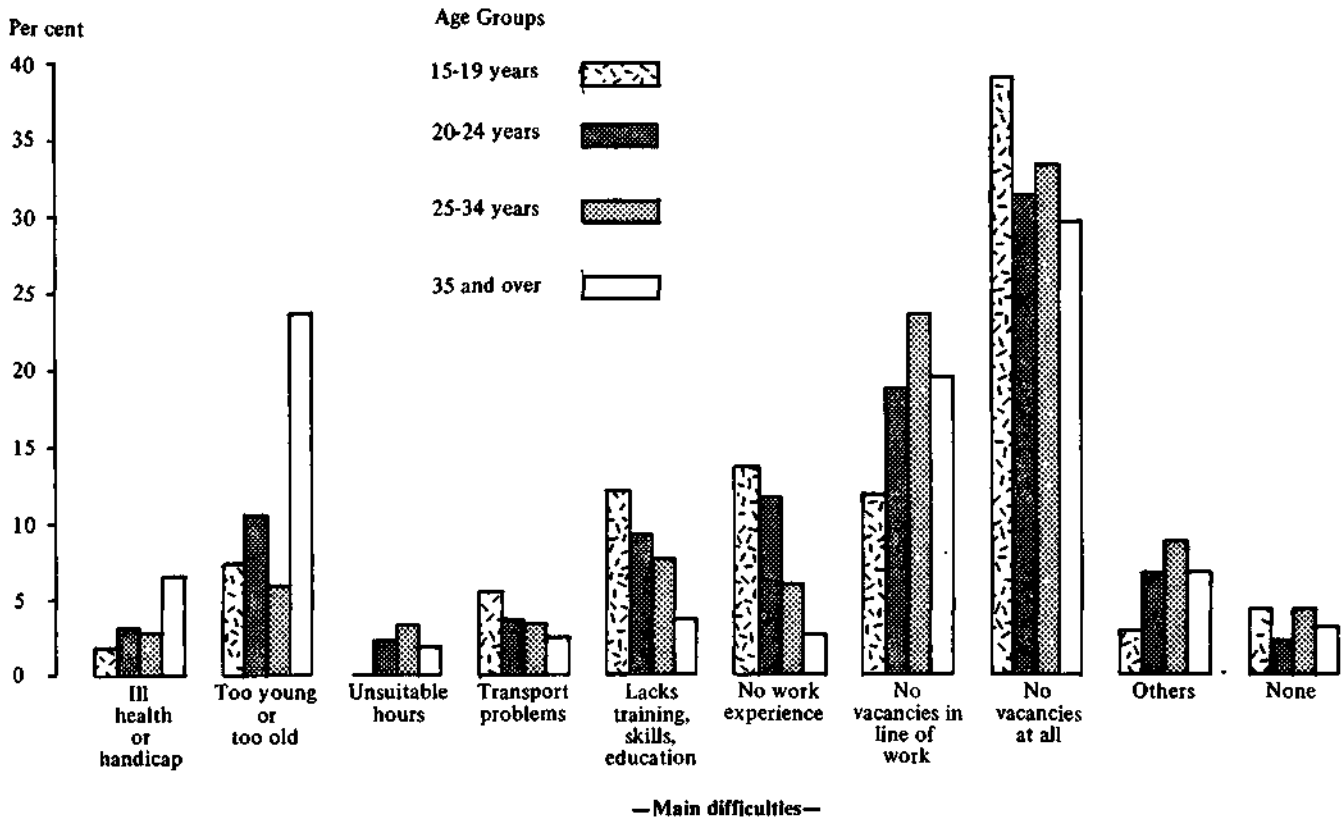


Source: Labour Force Experience, Australia, February 1983 (6206.0)

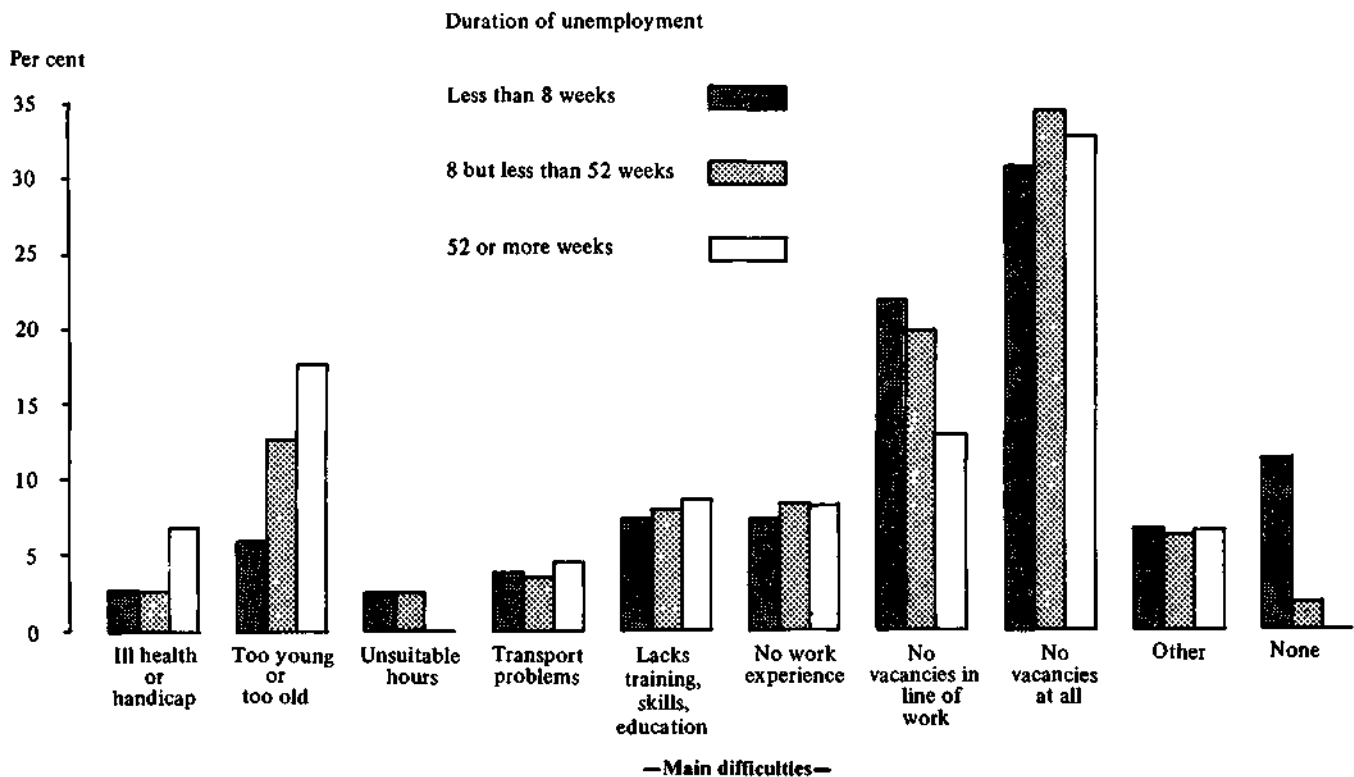
**TABLE 4.9. PERSONS WHO LOOKED FOR WORK AT SOME TIME DURING THE YEAR ENDING FEBRUARY 1983:
WEEKS SPENT LOOKING FOR WORK AND NUMBER OF SPELLS OF LOOKING FOR WORK BY AGE**

	Age group (years)						
	15-19	20-24	25-34	35-44	45-54	55 and over	Total
ONE SPELL OF LOOKING FOR WORK							
Weeks spent looking for work—	—'000—						
1 and under 2	36.8	17.1	26.2	16.5	7.0	*	105.6
2 and under 4	30.5	26.0	34.3	19.0	8.4	*	122.3
4 and under 8	60.7	40.6	50.6	25.6	11.8	*	192.6
8 and under 13	62.5	39.0	41.1	25.3	13.7	7.8	189.4
13 and under 26	42.7	42.1	43.7	25.5	18.2	6.3	178.5
26 and under 52	44.9	41.6	38.0	25.5	12.5	8.7	171.2
52	39.1	45.5	41.7	27.8	17.3	12.9	184.4
Total	317.3	251.8	275.7	165.3	88.8	45.3	1,144.0
—weeks—							
Average (mean) duration	17.1	20.8	18.1	19.5	21.3	26.5	19.2
Median duration	10.0	13.0	10.0	12.0	14.0	23.1	12.0
TWO SPELLS OF LOOKING FOR WORK							
Weeks spent looking for work—	—'000—						
2 and under 4	*	5.9	*	*	*	*	14.9
4 and under 13	14.5	14.0	14.6	9.1	*	*	57.4
13 and under 26	15.1	16.5	12.9	6.0	*	*	55.3
26 and over	26.7	25.0	18.6	11.1	5.1	*	89.9
Total	59.3	61.4	49.8	27.6	12.8	6.7	217.6
—weeks—							
Average (mean) duration	23.5	22.4	20.7	21.5	20.8	24.3	22.2
Median duration	23.1	22.0	17.1	18.1	22.0	26.0	20.1
THREE OR MORE SPELLS OF LOOKING FOR WORK							
Weeks spent looking for work—	—'000—						
3 and under 4	*	*	*	*	*	*	*
4 and under 13	9.4	10.6	12.8	8.1	*	*	45.8
13 and under 26	4.9	7.1	6.5	5.7	*	*	27.6
26 and over	6.8	9.5	10.1	*	*	*	33.5
Total	21.9	27.9	30.2	18.9	6.5	5.3	110.7
—weeks—							
Average (mean) duration	18.2	20.1	17.6	16.0	20.0	14.3	18.1
Median duration	14.0	16.1	16.0	13.0	21.0	12.0	14.0
TOTAL							
Weeks spent looking for work—	—'000—						
1 and under 2	36.8	17.1	26.2	16.5	7.0	*	105.6
2 and under 4	34.3	32.6	38.7	21.4	9.5	4.5	141.0
4 and under 8	71.1	49.8	64.3	33.0	14.3	4.8	237.3
8 and under 13	76.0	54.4	54.8	35.1	16.7	11.0	247.9
13 and under 26	62.8	65.7	63.1	37.2	23.4	9.4	261.4
26 and under 52	78.4	76.0	66.7	40.8	19.9	12.7	294.6
52	39.1	45.5	41.7	27.8	17.3	12.9	184.4
Total	398.5	341.0	355.7	211.8	108.1	57.3	1,472.3
—weeks—							
Average (mean) duration	18.1	21.0	18.4	19.5	21.2	25.1	19.6
Median duration	11.1	14.1	12.0	12.1	16.0	20.1	13.0

Source: Labour Force Experience, Australia, During the Year Ending February 1983 (6206.0).

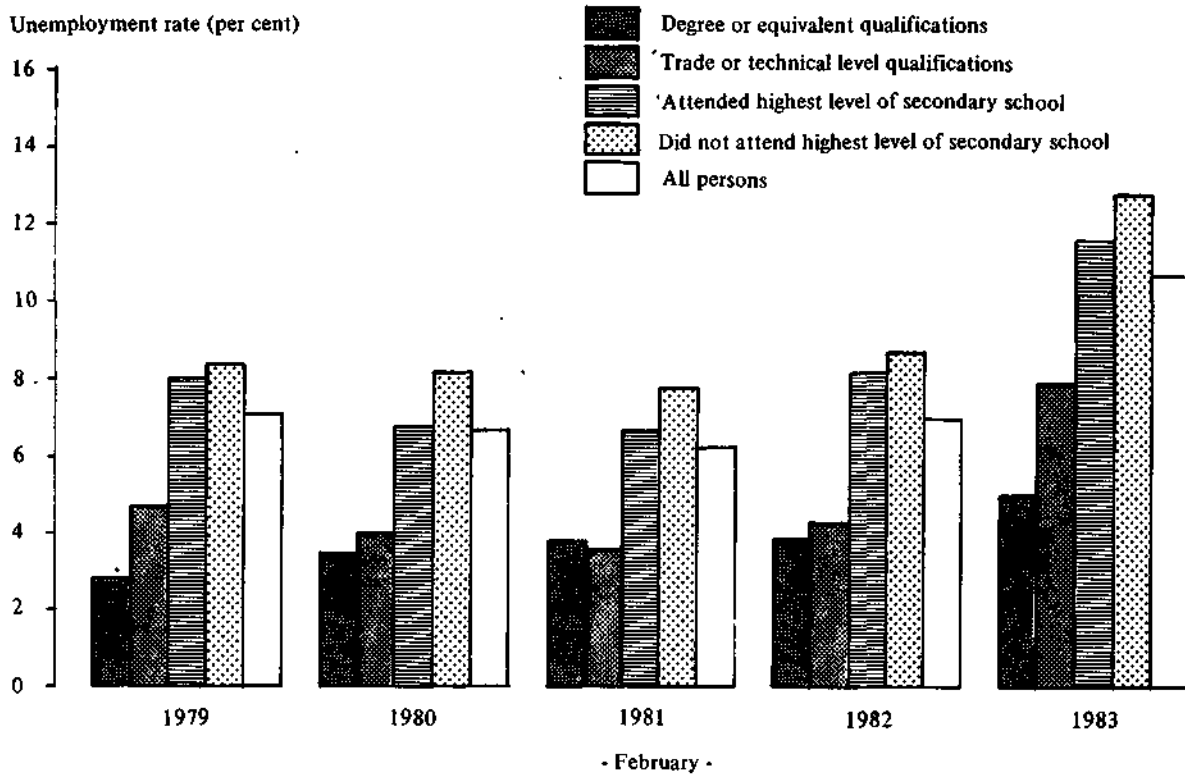
CHART 4.i. PERSONS LOOKING FOR WORK : MAIN DIFFICULTY IN FINDING WORK BY AGE, JULY 1983

Source: *Characteristics of Persons Looking for Work, Australia, July 1983 (6222.0)*

CHART 4.j. PERSONS LOOKING FOR WORK : MAIN DIFFICULTY IN FINDING WORK AND DURATION OF UNEMPLOYMENT JULY 1983

Source: *Characteristics of Persons Looking for Work, Australia, July 1983 (6222.0)*

**CHART 4.k. UNEMPLOYED PERSONS : EDUCATIONAL ATTAINMENT, UNEMPLOYMENT RATES
FEBRUARY 1979 TO FEBRUARY 1983**



Source: *Labour Force Status and Educational Attainment, Australia, February 1983 (6235.0)*

**TABLE 4.10. UNEMPLOYED PERSONS: EDUCATIONAL ATTAINMENT, UNEMPLOYMENT RATES
FEBRUARY 1979 TO FEBRUARY 1983**

February	With post-school qualifications			Without post-school qualifications			Total
	Degree or equivalent	Trade technical level	Total(a)	Attended highest secondary level	Did not attend highest level of secondary school	Total(b)	
UNEMPLOYED ('000)							
1979	12.3	86.8	103.7	60.3	276.9	338.1	460.1
1980	15.4	77.9	96.9	52.0	273.2	327.1	442.8
1981	19.6	72.8	96.7	53.2	251.9	306.4	422.4
1982	21.2	92.4	116.1	68.7	277.9	347.7	484.4
1983	29.5	175.4	212.0	102.4	404.5	509.7	746.7
UNEMPLOYMENT RATE (per cent)							
1979	2.8	4.7	4.4	8.0	8.4	8.3	7.1
1980	3.5	4.0	4.0	6.8	8.2	8.0	6.7
1981	3.8	3.6	3.7	6.7	7.8	7.5	6.3
1982	3.9	4.3	4.2	8.2	8.7	8.6	7.0
1983	5.0	7.9	7.4	11.6	12.8	12.6	10.7

(a) Includes a small number of persons with other post-school qualifications (b) Includes persons who never attended school.

Source: *Labour Force Status and Educational Attainment, Australia, February 1983 (6235.0)*.

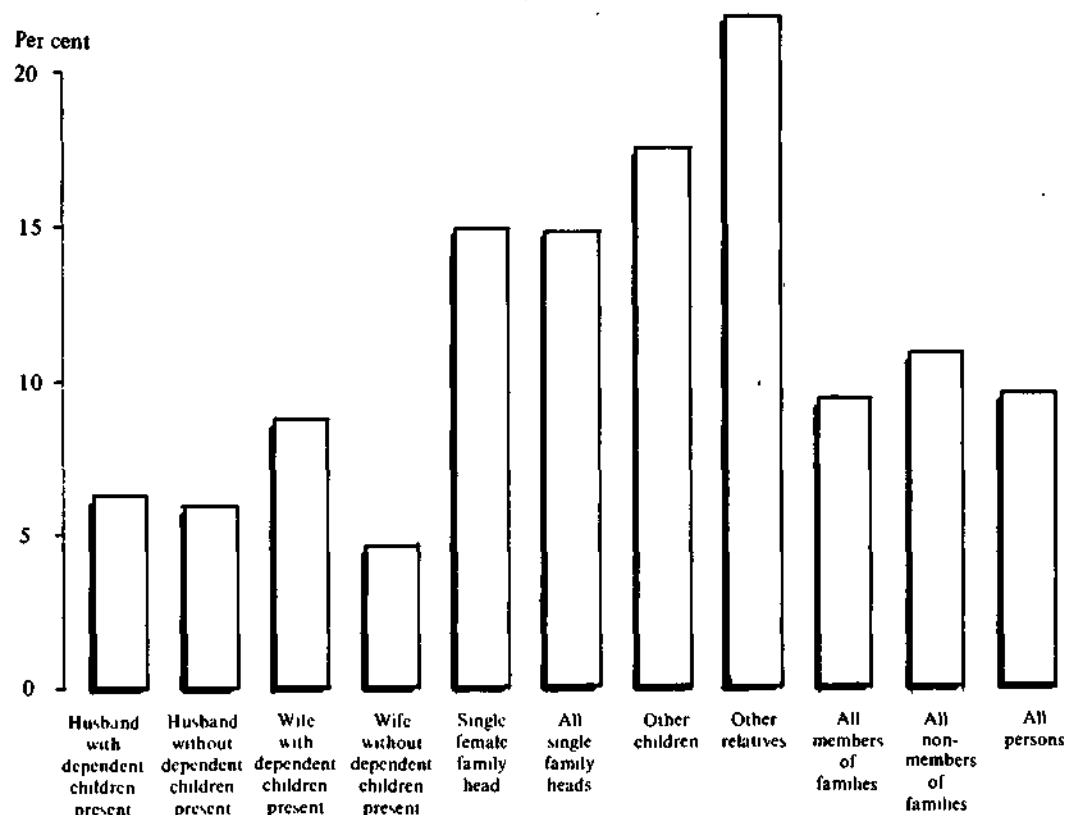
**TABLE 4.11. PERSONS LOOKING FOR WORK(a) : EDUCATIONAL ATTAINMENT BY AGE,
JULY 1983
(' 000)**

Educational attainment	Age group (years)				Total
	15-19	20-24	25-34	35 and over	
MALES					
With post-school qualifications(b)	5.7	25.1	38.2	47.7	116.8
Degree or equivalent	*	3.5	5.3	5.6	14.3
Trade, technical level	4.5	20.2	31.7	41.6	98.0
Without post-school qualifications(c)	73.8	73.8	62.2	86.2	295.9
Attended highest level of secondary school available	11.7	15.7	9.0	10.6	47.0
Did not attend highest level of secondary school and left at age—					
18 years or over	*	*	*	*	5.1
16 or 17 years	31.7	25.3	18.9	11.1	87.0
14 or 15 years	29.4	28.8	28.3	46.8	133.2
13 years or under	*	*	5.1	15.1	22.7
Total	62.1	58.1	53.2	74.6	248.0
Still at school	11.4	*	*	*	11.6
Total	90.9	99.1	100.4	133.9	424.3
FEMALES					
With post-school qualifications(b)	8.4	14.4	19.3	14.7	56.8
Degree or equivalent	*	*	4.1	*	7.9
Trade, technical level	7.5	11.7	14.6	12.2	45.9
Without post-school qualifications(c)	53.6	38.3	43.1	44.8	179.8
Attended highest level of secondary school available	12.1	11.1	7.9	6.9	38.0
Did not attend highest level of secondary school and left at age—					
18 years or over	*	*	*	*	*
16 or 17 years	19.0	14.0	14.4	6.2	53.6
14 or 15 years	21.7	12.3	17.5	23.9	75.4
13 years or under	*	*	*	6.4	9.3
Total	41.5	27.2	35.2	36.9	140.8
Still at school	10.4	*	*	*	10.4
Total	72.4	52.7	62.4	59.4	246.9
PERSONS					
With post-school qualifications(b)	14.1	39.6	57.5	62.4	173.5
Degree or equivalent	*	4.8	9.4	7.9	22.2
Trade, technical level	12.0	31.9	46.3	53.7	143.9
Without post-school qualifications(c)	127.5	112.0	105.2	131.0	475.7
Attended highest level of secondary school available	23.8	26.8	16.8	17.5	85.0
Did not attend highest level of secondary school and left at age—					
18 years or over	*	*	*	*	7.6
16 or 17 years	50.7	39.2	33.4	17.3	140.6
14 or 15 years	51.1	41.1	45.8	70.7	208.6
13 years or under	*	*	7.5	21.5	32.0
Total	103.7	85.2	88.4	111.5	388.8
Still at school	21.7	*	*	*	22.0
Total	163.3	151.8	162.7	193.3	671.2

(a) The number of persons looking for work differs from the number of unemployed persons shown elsewhere in that the latter includes persons who were waiting to be called back to a full-time or part-time job from which they had been stood down. (b) Includes a small number of persons with other post-school qualifications (c) Includes a small number of persons with no formal education

Source: Characteristics of Persons Looking for Work, Australia, July 1983 (6222.0).

CHART 4.1. UNEMPLOYED PERSONS : FAMILY STATUS, UNEMPLOYMENT RATES, JULY 1983
(Per cent)



Source: Labour Force Status and Other Characteristics of Families, Australia (6224.0)

TABLE 4.12. ALL FAMILIES WITH ONE OR MORE MEMBERS UNEMPLOYED: TYPE OF FAMILY AND EMPLOYMENT STATUS(a), JULY 1983
(' 000 families)

	None employed			One employed			Two or more employed			Total		
	One un-employed	Two or more un-employed	Total employed	One un-employed	Two or more un-employed	Total employed	One un-employed	Two or more un-employed	Total employed	One un-employed	Two or more un-employed	Total
Married-couple families	106.3	30.5	136.7	131.5	14.0	145.6	90.5	11.1	101.7	328.3	55.6	384.0
With dependent children present	69.6	20.3	89.9	85.4	9.4	94.8	57.6	7.3	64.9	212.6	37.1	249.7
Without dependent children present	36.7	10.1	46.8	46.1	4.6	50.7	32.9	*	36.7	115.7	18.5	134.3
Other families	37.2	8.3	45.5	23.4	*	26.0	6.6	*	7.4	67.2	11.6	78.8
With dependent children present	25.4	*	28.1	7.9	*	8.8	*	*	*	36.1	*	40.0
Without dependent children present	11.8	5.6	17.4	15.5	*	17.2	*	*	*	31.2	7.7	38.8
All families	143.5	38.7	182.2	155.0	16.6	171.6	97.2	11.9	109.0	395.6	67.2	462.8
With dependent children present	95.0	23.0	118.0	93.3	10.4	103.6	60.4	7.6	68.0	248.7	41.0	289.7
Without dependent children present	48.4	15.7	64.2	61.7	6.3	67.9	36.8	*	41.0	146.9	26.2	173.1

(a) Employment status refers to persons aged 15 and over only.

Source: Labour Force Status and Other Characteristics of Families, Australia, July 1983 (6224.0).

TABLE 4.13. FAMILY STATUS OF UNEMPLOYED PERSONS: DURATION OF UNEMPLOYMENT, JULY 1983

	Duration of unemployment (weeks)							Total	Average duration	Median duration
	Under 2	2 and under 4	4 and under 8	8 and under 13	13 and under 26	26 and under 52	52 and over			
	—'000 persons—									
Member of a family	33.3	45.1	47.6	52.6	83.9	138.9	138.5	540.0	39.4	26.0
Husband or wife	19.0	23.8	23.1	24.5	42.5	66.7	68.0	276.6	38.8	26.0
With dependent children present	12.8	16.9	16.4	15.2	30.8	44.2	47.8	184.1	37.5	25.1
Without dependent children present	6.2	6.9	6.7	9.3	11.7	22.5	20.2	83.5	41.8	26.0
Not-married family head	4.6		5.6		4.6	6.1	10.6	31.5	46.2	26.1
With dependent children present	5.0			5.8		*	8.0	22.5	48.7	26.0
Full-time student aged 15-20 years	4.5	4.7	6.9		*	6.3	*	29.4	20.1	9.0
Other child(a) of family head	7.2	12.9	16.6	18.6	28.6	55.2	52.8	191.8	42.3	28.0
Other relative	*	*	4.9		*	4.6	*	19.5	37.5	21.0
Not a member of a family	*	6.4	10.3	8.1	15.9	26.2	27.0	96.9	40.4	27.0
Living alone	*	*	5.0		4.8	8.1	9.8	29.7	48.1	30.1
Not living alone	*	4.7	7.7	5.6	11.1	18.1	17.2	67.2	37.0	26.1
Total	36.4	51.5	57.8	60.7	99.8	165.2	165.5	636.8	39.6	26.0

(a) Aged 15 and over

Source: Labour Force Status and Other Characteristics of Families, Australia, July 1983 (6224 0)

TABLE 4.14. PERSONS UNEMPLOYED AT SOME TIME DURING 1981-82: MARITAL STATUS, AGE, DURATION OF UNEMPLOYMENT AND MEAN ANNUAL INCOME, AUSTRALIA, 1981-82

	Duration of unemployment (weeks)						Total	All persons(a)
	1 and under 4	4 and under 8	8 and under 13	13 and under 26	26 and under 39	39 to 52		
NUMBER ('000)								
Married males	36.9	43.2	47.1	41.7	32.8	55.9	257.4	3,523.7
Not-married males(b) aged—								
15-19	7.8	6.8	7.5	19.2	6.9	23.7	71.9	250.8
20-24	17.8	18.3	22.8	24.1	7.7	28.3	119.1	488.8
25 and over	12.3	12.7	13.8	18.4	16.5	34.8	108.4	857.0
Married females	24.7	26.2	23.5	26.9	20.8	36.2	158.2	3,350.9
Not-married females(b) aged—								
15-19	8.1	9.0	12.2	19.4	12.3	20.1	81.0	219.9
20-24	13.0	12.3	14.3	14.8	8.6	19.2	82.2	341.6
25 and over	7.3	8.9	7.5	12.4	7.4	19.7	63.2	1,140.9
Total	127.8	137.3	148.7	176.8	113.0	237.9	941.4	10,173.7
MEAN ANNUAL INCOME (\$)								
Married males	13,500	12,600	12,200	10,000	8,100	6,300	10,300	..
Not-married males(b) aged—								
15-19	5,400	7,200	4,300	5,700	4,200	2,600	4,500	..
20-24	9,100	8,700	7,000	6,500	5,100	3,100	6,400	..
25 and over	13,400	10,900	9,800	8,700	6,000	3,300	7,500	..
Married females	4,800	6,100	4,500	4,700	3,000	1,300	3,900	..
Not-married females(b) aged—								
15-19	5,900	4,500	5,200	3,900	4,000	2,600	4,000	..
20-24	8,500	6,800	7,200	5,800	4,900	3,500	6,000	..
25 and over	8,700	8,600	8,900	7,100	5,200	4,100	6,500	..
Total	9,400	9,100	8,300	6,900	5,500	3,600	6,800	..

(a) Includes all persons who received no income during period 1981-82, but excludes certain persons as explained in paragraph 8 of the Explanatory Notes to publication 6502 0. (b) Includes separated, divorced, widowed and never married

Source: Income and Housing Survey—Income of Individuals, Australia, 1981-82 (6502.0)

TABLE 4.15. PERSONS WHO STARTED A JOB DURING THE SIX MONTHS TO JULY 1982: METHOD OF JOB ATTAINMENT AND WHETHER OUT OF WORK PRIOR TO STARTING JOB ('000)

Method of job attainment	Whether out of work prior to starting job								
	Out of work prior to starting job			Changed employer to start job			Total		
	Males	Females	Persons	Males	Females	Persons	Males	Females	Persons
<i>Jobseeker approached employer</i>	304.5	290.8	595.3	111.9	79.2	191.1	416.4	370.0	786.4
Had no prior knowledge that job available, first step taken	124.6	114.6	239.2	46.0	29.7	75.7	170.7	144.3	315.0
Advertised for work	4.8	5.4	10.2	*	*	3.2	6.8	6.6	13.3
Contacted likely employers	92.5	82.0	174.5	33.5	21.4	54.9	126.1	103.4	229.5
Other	27.3	27.2	54.6	10.5	7.1	17.6	37.8	34.3	72.1
Had prior knowledge that job available through	179.9	176.2	356.1	65.9	49.5	115.3	245.8	225.7	471.4
CES	39.3	31.5	70.8	3.1	3.2	6.3	42.4	34.7	77.1
Private employment agency	3.3	7.2	10.5	*	*	4.7	5.3	9.9	15.2
School programs	4.3	*	6.0	*	*	*	4.8	*	7.1
Newspaper advertisements	57.3	63.3	120.6	29.7	24.9	54.5	87.0	88.1	175.1
Friends, relatives, etc.	65.8	61.0	126.7	24.8	15.0	39.8	90.6	75.9	166.5
Other	9.9	11.6	21.4	5.8	3.1	8.9	15.7	14.7	30.3
<i>Employer approached jobseeker</i>	45.3	64.2	109.5	52.1	26.1	78.2	97.5	90.3	187.8
Total	349.9	355.0	704.9	164.0	105.3	269.3	513.9	460.3	974.2

Source: *Methods of Obtaining Jobs, Australia, July 1982* (6245.0).

TABLE 4.16. PERSONS WHO STARTED A JOB DURING THE SIX MONTHS TO JULY 1982: METHOD OF JOB ATTAINMENT AND EDUCATIONAL ATTAINMENT ('000)

Method of job attainment	With post-school qualifications			Attended highest secondary level	Without post-school qualifications		Total(b)	Total
	Degree or equivalent	Trade, technical level	Total(a)		Did not attend highest level of secondary school and left at age (years)			
					16 or over	15 or under		
Jobseeker approached employer	60.7	235.6	304.1	127.5	153.7	199.9	482.3	786.4
Had no prior knowledge that job available, first step taken	26.4	94.1	123.8	49.0	63.1	79.0	191.2	315.0
Advertised for work	*	4.6	5.6	*	*	3.1	7.8	13.3
Contacted likely employers	19.1	67.4	89.1	35.8	45.7	58.8	140.4	229.5
Other	6.6	22.1	29.1	10.8	15.1	17.1	43.0	72.1
Had prior knowledge that job available through	34.3	141.6	180.3	78.6	90.6	120.9	291.1	471.4
CES	*	16.8	18.2	12.2	18.4	28.2	58.9	77.1
Private employment agency	*	5.8	8.0	*	*	*	7.2	15.2
School programs	*	*	*	*	*	*	4.8	7.1
Newspaper advertisements	17.3	63.2	82.4	30.7	28.1	33.9	92.8	175.1
Friends, relatives, etc.	8.9	44.4	55.0	24.4	36.6	50.3	111.6	166.5
Other	4.7	9.7	14.4	6.7	3.8	5.0	15.9	30.4
Employer approached jobseeker	14.4	55.1	71.2	25.2	35.1	56.2	116.6	187.8
Total	75.1	290.7	375.2	152.7	188.8	256.0	598.9	974.2

(a) Includes persons with other post-school qualifications. (b) Includes persons who never attended school.

Source: *Methods of Obtaining Jobs, Australia, July 1982* (6245.0).

**CHART 4.m. PERSONS WHO STARTED A JOB DURING THE SIX MONTHS TO JULY 1982 :
METHOD OF JOB ATTAINMENT**

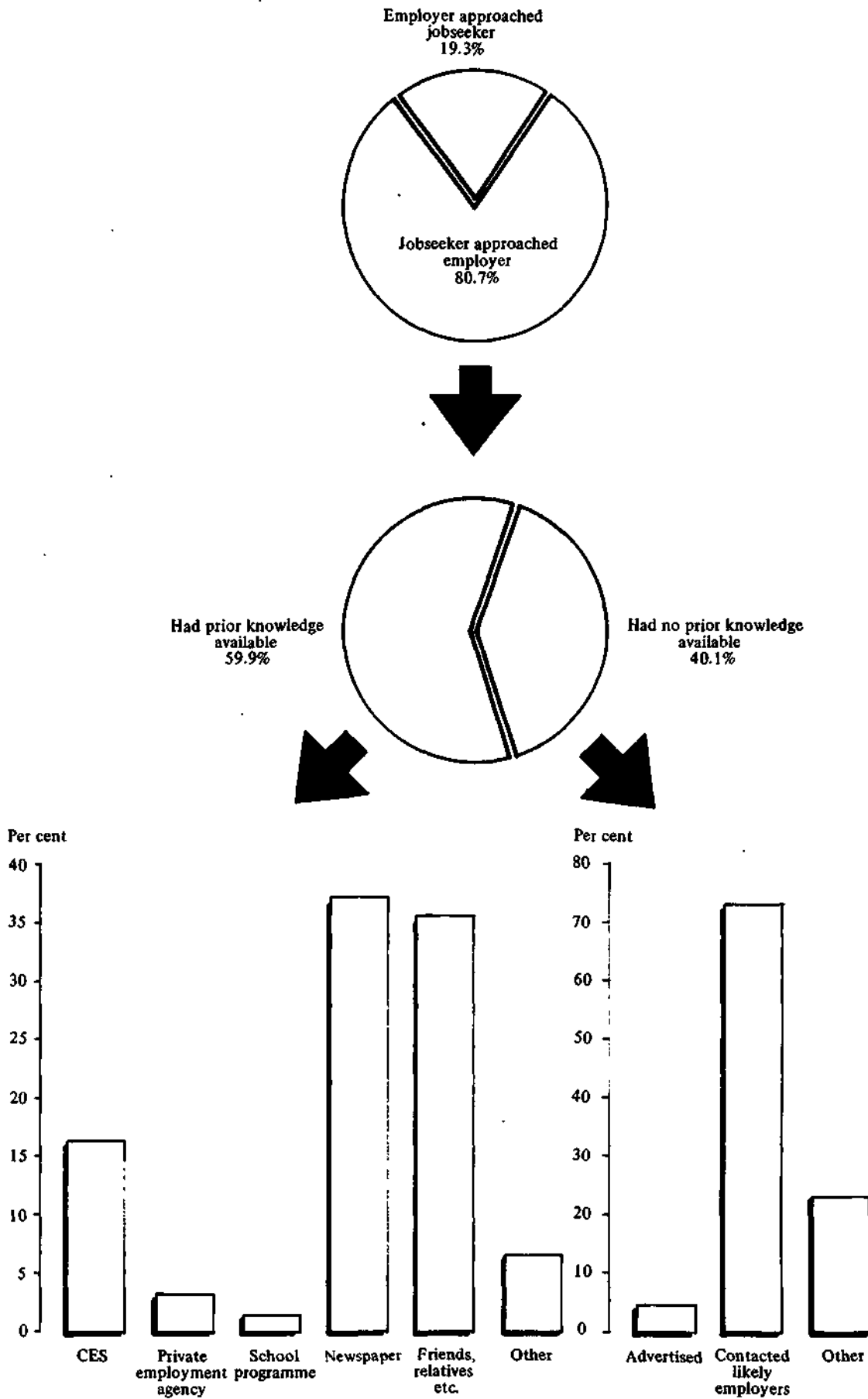


TABLE 4.17. PERSONS WHO STARTED A JOB DURING THE SIX MONTHS TO JULY 1982: METHOD OF JOB ATTAINMENT BY AGE
(' 000)

	Age group (years)								
Method of job attainment	15-19	20-24	25-29	30-39	40-49	50-59	60-64	65 and over	Total
MALES									
Jobseeker approached employer	101.4	110.2	67.5	81.2	34.4	18.5	*	*	416.4
Had no prior knowledge that job available, first step taken	38.4	46.6	31.0	32.7	13.2	7.3	*	*	170.7
Advertised for work	*	*	*	*	*	*	*	*	6.8
Contacted likely employers	28.1	34.9	23.0	24.1	10.0	5.3	*	*	126.1
Other	9.6	10.1	6.1	6.9	*	*	*	*	37.8
Had prior knowledge that job available through	62.9	63.6	36.5	48.5	21.2	11.2	*	*	245.8
CES	16.5	10.9	6.4	5.4	*	*	*	*	42.4
Private employment agency	*	*	*	*	*	*	*	*	5.3
School programs	3.6	*	*	*	*	*	*	*	4.8
Newspaper advertisements	16.7	19.5	13.2	21.4	10.1	5.4	*	*	87.0
Friends, relatives, etc.	23.7	25.0	12.1	17.5	7.2	4.3	*	*	90.6
Other	*	5.8	3.0	*	*	*	*	*	15.7
Employer approached jobseeker	18.1	21.3	17.9	21.4	10.8	5.8	*	*	97.5
Total	119.5	131.5	85.3	102.6	45.2	24.3	4.3	*	513.9
FEMALES									
Jobseeker approached employer	100.9	95.8	55.6	78.2	29.3	9.7	*	*	370.0
Had no prior knowledge that job available, first step taken	33.5	39.8	24.2	31.6	11.2	3.8	*	*	144.3
Advertised for work	*	*	*	*	*	*	*	*	6.6
Contacted likely employers	25.0	28.2	16.9	23.7	7.2	*	*	*	103.4
Other	7.6	9.9	6.1	6.0	3.4	*	*	*	34.3
Had prior knowledge that job available through	67.4	55.9	31.4	46.5	18.2	5.8	*	*	225.7
CES	20.9	8.3	*	*	*	*	*	*	34.7
Private employment agency	*	3.0	*	*	*	*	*	*	9.9
School programs	*	*	*	*	*	*	*	*	*
Newspaper advertisements	20.5	22.0	12.1	21.0	9.0	3.5	*	*	88.1
Friends, relatives, etc.	19.0	17.7	12.8	17.9	6.3	*	*	*	75.9
Other	4.1	4.5	*	3.3	*	*	*	*	14.7
Employer approached jobseeker	10.2	15.3	13.3	28.5	15.4	6.5	*	*	90.3
Total	111.1	111.0	68.9	106.6	44.7	16.2	*	*	460.3
PERSONS									
Jobseeker approached employer	202.2	206.0	123.1	159.3	63.8	28.1	3.2	*	786.4
Had no prior knowledge that job available, first step taken	71.9	86.5	55.2	64.3	24.4	11.1	*	*	315.0
Advertised for work	*	3.4	3.1	3.7	*	*	*	*	13.3
Contacted likely employers	53.1	63.1	39.9	47.8	17.2	7.7	*	*	229.5
Other	17.2	20.0	12.2	12.9	6.0	3.1	*	*	72.1
Had prior knowledge that job available through	130.3	119.5	67.9	95.0	39.4	17.1	*	*	471.4
CES	37.4	19.2	8.2	7.7	3.8	*	*	*	77.1
Private employment agency	*	4.5	3.9	3.2	*	*	*	*	15.2
School programs	5.0	*	*	*	*	*	*	*	7.1
Newspaper advertisements	37.3	41.6	25.2	42.4	19.2	8.9	*	*	175.1
Friends, relatives, etc.	42.7	42.7	24.9	35.4	13.6	6.3	*	*	166.5
Other	6.1	10.3	5.0	6.1	*	*	*	*	30.3
Employer approached jobseeker	28.3	36.6	31.1	49.9	26.2	12.4	*	*	187.8
Total	230.6	242.5	154.2	209.2	89.9	40.5	5.6	*	974.2

Source: Methods of Obtaining Jobs, Australia, July 1982 (6245.0).

**TABLE 4.18. PERSONS WHO STARTED A JOB DURING THE SIX MONTHS TO JULY 1982:
METHOD OF JOB ATTAINMENT BY AGE**
(Per cent)

Method of job attainment	Age group (years)						Total
	15-19	20-24	25-29	30-39	40-49	50 and over	
<i>Jobseeker approached employer</i>	87.7	84.9	79.8	76.2	70.9	67.1	80.7
Had no prior knowledge that job available, first step taken	35.6	42.0	44.9	40.4	38.2	39.5	40.1
Advertised for work	*	3.9	5.6	5.7	*	*	4.2
Contacted likely employers	73.9	72.9	72.2	74.3	70.5	66.7	72.9
Other	24.0	23.1	22.1	20.0	24.7	29.9	22.9
Had prior knowledge that job available through	64.4	58.0	55.1	59.6	61.8	60.5	59.9
CES	28.7	16.1	12.2	8.1	9.6	*	16.3
Private employment agency	*	3.8	5.7	3.4	*	*	3.2
School programs	3.8	*	*	*	*	*	1.5
Newspaper advertisements	28.6	34.8	37.2	44.6	48.6	49.3	37.2
Friends, relatives, etc.	32.8	35.7	36.7	37.2	34.5	37.9	35.3
Other	4.7	8.6	7.4	6.4	*	*	6.4
<i>Employer approached jobseeker</i>	12.3	15.1	20.2	23.8	29.1	32.9	19.3
Total	100.0	100.0	100.0	100.0	100.0	100.0	100.0

Source: *Methods of Obtaining Jobs, Australia, July 1982* (6245 0).

**TABLE 4.19. PERSONS WHO STARTED A JOB DURING THE SIX MONTHS TO JULY 1982:
METHOD OF JOB ATTAINMENT AND CURRENT LABOUR FORCE STATUS**

Method of job attainment	Employed	Unemployed	In the labour force — '000—	Not in the labour force	Total	Unemployment rate —per cent—	Participation rate
<i>Jobseeker approached employer</i>	654.6	80.4	735.0	51.4	786.4	10.9	93.5
Had no prior knowledge that job available, first step taken	262.9	29.5	292.4	22.6	315.0	10.1	92.8
Advertised for work	11.4	*	12.6	*	13.3	*	94.2
Contacted likely employers	191.6	21.2	212.9	16.6	229.5	10.0	92.8
Other	59.8	7.1	67.0	5.2	72.1	10.7	92.8
Had prior knowledge that job available through	391.7	50.9	442.6	28.8	471.4	11.5	93.9
CES	60.3	14.3	74.6	*	77.1	19.2	96.9
Private employment agency	13.8	*	14.2	*	15.2	*	93.4
School programs	6.5	*	6.7	*	7.1	*	93.9
Newspaper advertisements	154.6	13.7	168.4	6.8	175.1	8.2	96.1
Friends, relatives, etc.	132.3	19.7	152.0	14.5	166.5	13.0	91.3
Other	24.2	*	26.7	3.7	30.3	*	87.9
<i>Employer approached jobseeker</i>	156.1	9.8	165.9	21.9	187.8	5.9	88.4
Total	810.7	90.2	900.9	73.3	974.2	10.0	92.5

Source: *Methods of Obtaining Jobs, Australia, July 1982* (6245.0).

TABLE 4.20. JOB VACANCIES AND JOB VACANCY RATES(a): STATES AND TERRITORIES

Month	N.S.W.	Vic.	Qld	S.A.	W.A.	Tas.	N.T.	A.C.T.	Australia
JOB VACANCIES ('000)									
1974 March	62.7	51.6	20.6	12.2	10.1	2.4	1.5	4.0	165.2
1975 March	19.3	14.9	7.1	4.1	4.4	1.2	1.5	2.8	55.2
1976 March	15.3	18.2	5.9	4.7	3.4	1.5	0.8	1.1	50.8
1977 March	14.5	18.0	5.3	3.3	4.0	1.6	0.7	2.2	49.6
1978 March	13.2	11.5	3.5	1.8	3.0	1.0	0.4	1.8	36.3
1979 May	14.0	10.6	3.5	2.2	2.1	0.7	0.5	0.7	34.3
1980 May	13.0	8.1	3.0	1.4	2.2	0.8	0.5	0.8	29.8
1981 May	18.5	8.3	3.1	1.0	3.2	0.5	0.7	0.5	35.7
1982 May	9.0	7.6	3.9	1.2	2.2	0.4	0.2	0.8	25.3
1983 February	5.8	5.8	1.9	0.7	*	0.4	0.4	0.6	16.9
May	6.9	5.3	1.7	1.0	*	0.3	0.3	0.6	17.5
August	5.9	5.8	1.3	1.1	0.9	0.4	0.3	0.9	16.7
November(b)	7.8	4.5	2.0	1.3	1.4	0.7	0.3	0.9	19.1
November(c)	11.2	6.5	4.1	2.1	3.5	0.8	0.5	1.3	30.1
JOB VACANCY RATES (per cent)									
1974 March	3.7	4.0	3.7	3.1	3.0	2.0	6.7	5.6	3.6
1975 March	1.3	1.2	1.4	1.1	1.4	1.1	5.2	3.8	1.3
1976 March	1.0	1.5	1.1	1.1	1.0	1.3	3.1	1.4	1.2
1977 March	1.0	1.6	1.0	0.8	1.2	1.4	2.5	2.7	1.2
1978 March	0.9	0.9	0.6	0.4	0.8	0.8	1.5	2.3	0.8
1979 May	0.9	0.9	0.7	0.6	0.6	0.6	1.7	1.0	0.8
1980 May	0.9	0.7	0.5	0.4	0.6	0.7	1.7	1.1	0.7
1981 May	1.2	0.7	0.6	0.3	0.9	0.4	2.3	0.7	0.8
1982 May	0.6	0.7	0.7	0.3	0.6	0.4	0.7	1.0	0.6
1983 February	0.4	0.6	0.4	0.2	0.4	0.4	0.2	0.8	0.4
May	0.5	0.5	0.3	0.3	0.4	0.3	0.9	0.8	0.5
August	0.4	0.6	0.3	0.3	0.3	0.4	1.0	1.2	0.4
November(b)	0.6	0.4	0.4	0.3	0.4	0.6	1.0	1.2	0.5
November(c)	0.7	0.5	0.5	0.5	*	0.7	*	1.3	0.6

(a) Job vacancy rate is calculated by expressing the number of job vacancies as a percentage of the number of employees plus vacancies. (b) Result from payroll tax based survey. (c) Result of sample from ABS register.

Source: *Job Vacancies, Australia* (6231.0).