

### CONTENTS

---

Appendix 1: Census Reference Products.....	2
Appendix 2: Basic Community Profile – List of Tables .....	3
Appendix 3: Aboriginal and Torres Strait Islander peoples (Indigenous) Profile – List of Tables.....	4
Appendix 4: Time Series Profile – List of Tables .....	5
Appendix 5: Place of Enumeration Profile – List of Tables .....	6
Appendix 6: Expanded Community Profile – List of Tables .....	7
Appendix 7: Working Population Profile – List of Tables .....	8
Appendix 8: TableBuilder Basic Data Items .....	9
Appendix 9: TableBuilder Pro Data Items.....	16
Appendix 10: 2011 Census Products by Geographic Availability .....	23
Appendix 11: Australian Statistical Geography Standard: Structure and Summary for Census .....	26
Appendix 12: Census Products and Services Release Schedule – by Date .....	28
Appendix 13: Census Products and Services Release Schedule – by Product.....	30

## APPENDIXES: PRODUCTS AND SERVICES, 2011 (cat. no. 2011.0.55.001)

---

### APPENDIX 1: CENSUS REFERENCE PRODUCTS

---

#### CENSUS PRODUCTS

- *Census Dictionary, 2011* (cat. no. 2901.0)
- *How Australia Takes a Census, 2011* (cat. no. 2903.0)
- *Information Paper: Census of Population and Housing – Proposed Products and Services, 2011* (cat. no. 2011.0)
- *Census of Population and Housing: Nature and Content, 2011* (cat. no. 2008.0)
- *Information Paper: Census of Population and Housing, ABS Views on Census Output Strategy, 2006* (cat. no. 2009.0)
- *Census of Population and Housing – Details of Undercount, 2011* (cat. no. 2940.0) – scheduled for release June 2012
- *Census of Population and Housing – Details of Undercount, 2006* (cat. no. 2940.0)
- *Information Paper: Census of Population and Housing, ABS Views on Census Output Strategy, 2001* (cat. no. 2009.0)

#### GEOGRAPHY PRODUCTS

- *Census of Population and Housing: Outcomes from the 2011 Census Output Geography Discussion Paper, 2011* (cat. no. 2911.0.55.003)
- *Discussion Paper: Census of Population and Housing, ABS Views on 2011 Census Output Geography, 2011* (cat. no. 2911.0.55.002)
- *Information Paper: Outcome from the Review of the Australian Standard Geographical Classification, 2008* (cat. no. 1216.0.55.002)

### APPENDIX 2: BASIC COMMUNITY PROFILE – LIST OF TABLES

---

#### FIRST RELEASE TABLES (available 21 June 2012)

---

<b>B01</b>	Selected Person Characteristics by Sex
<b>B02</b>	Selected Medians and Averages
<b>B03</b>	Place of Usual Residence on Census Night by Age
<b>B04</b>	Age by Sex
<b>B05</b>	Registered Marital Status by Age by Sex
<b>B06</b>	Social Marital Status by Age by Sex
<b>B07</b>	Indigenous Status by Age by Sex
<b>B08</b>	Ancestry by Birthplace of Parents
<b>B09</b>	Country of Birth of Person by Sex
<b>B10</b>	Country of Birth of Person by Year of Arrival in Australia
<b>B11</b>	Proficiency in Spoken English/Language by Year of Arrival in Australia by Sex
<b>B12</b>	Proficiency in Spoken English/Language of Parents by Age of Dependent Children
<b>B13</b>	Language Spoken at Home by Sex
<b>B14</b>	Religious Affiliation by Sex
<b>B15</b>	Type of Educational Institution Attending (Full/Part-Time Student Status by Age) by Sex
<b>B16</b>	Highest Year of School Completed by Age by Sex
<b>B17</b>	Total Personal Income (weekly) by Age by Sex
<b>B18</b>	Core Activity Need for Assistance by Age by Sex
<b>B19</b>	Voluntary Work for an Organisation or Group by Age by Sex
<b>B20</b>	Unpaid Domestic Work: Number of Hours by Age by Sex
<b>B21</b>	Unpaid Assistance to a Person with a Disability by Age by Sex
<b>B22</b>	Unpaid Child Care by Age by Sex
<b>B23</b>	Relationship in Household by Age by Sex
<b>B24</b>	Number of Children Ever Born by Age of Parent
<b>B25</b>	Family Composition
<b>B26</b>	Total Family Income (weekly) by Family Composition
<b>B27</b>	Family Blending
<b>B28</b>	Total Household Income (weekly) by Household Composition
<b>B29</b>	Number of Motor Vehicles by Dwellings
<b>B30</b>	Household Composition by Number of Persons Usually Resident
<b>B31</b>	Dwelling Structure
<b>B32</b>	Tenure and Landlord Type by Dwelling Structure
<b>B33</b>	Mortgage Repayment (monthly) by Dwelling Structure
<b>B34</b>	Rent (weekly) by Landlord Type
<b>B35</b>	Type of Internet Connection by Dwelling Structure
<b>B36</b>	Dwelling Structure by Number of Bedrooms

---

#### SECOND RELEASE TABLES (available 30 October 2012)

---

<b>B37</b>	Selected Labour Force, Education and Migration Characteristics by Sex
<b>B38</b>	Place of Usual Residence 1 Year Ago by Sex
<b>B39</b>	Place of Usual Residence 5 Years Ago by Sex
<b>B40</b>	Non-School Qualification: Level of Education by Age by Sex
<b>B41</b>	Non-School Qualification: Field of Study by Age by Sex
<b>B42</b>	Labour Force Status by Age by Sex
<b>B43</b>	Industry of Employment by Age by Sex
<b>B44</b>	Industry of Employment by Occupation
<b>B45</b>	Occupation by Age by Sex
<b>B46</b>	Method of Travel to Work by Sex

---

## APPENDIXES: PRODUCTS AND SERVICES, 2011 (cat. no. 2011.0.55.001)

---

### APPENDIX 3: ABORIGINAL AND TORRES STRAIT ISLANDER PEOPLES (INDIGENOUS) PROFILE – LIST OF TABLES

---

#### FIRST RELEASE TABLES (available 21 June 2012)

---

I01	Selected Person Characteristics by Indigenous Status by Sex
I02	Indigenous Status by Sex
I03	Age by Indigenous Status by Sex
I04	Selected Medians and Averages
I05	Type of Educational Institution Attending (Full/Part-Time Student Status by Age) by Indigenous Status by Sex
I06	Highest Year of School Completed by Indigenous Status by Sex
I07	Total Personal Income (weekly) by Age by Sex for Indigenous Persons
I08	Core Activity Need for Assistance by Age by Sex for Indigenous Persons
I09	Unpaid Assistance to a Person with a Disability by Age by Sex for Indigenous Persons
I10	Tenure and Landlord Type by Dwelling Structure by Indigenous Status of Household
I11	Type of Internet Connection by Indigenous Status of Household
I12	Household Composition and Family Composition by Number of Persons Usually Resident by Indigenous Status of Household
I13	Total Household Income (weekly) by Indigenous Status of Household

---

#### SECOND RELEASE TABLES (available 30 October 2012)

---

I14	Selected Labour Force, Education and Migration Characteristics by Indigenous Status by Sex
I15	Non-School Qualification: Level of Education by Indigenous Status by Age by Sex
I16	Labour Force Status by Age by Sex for Indigenous Persons

---

**APPENDIX 4: TIME SERIES PROFILE – LIST OF TABLES**

---

**FIRST RELEASE TABLES (available 21 June 2012)**

---

<b>T01</b>	Selected Person Characteristics
<b>T02</b>	Selected Averages and Medians
<b>T03</b>	Age by Sex
<b>T04</b>	Registered Marital Status by Age by Sex
<b>T05</b>	Social Marital Status by Age by Sex
<b>T06</b>	Indigenous Status by Age by Sex
<b>T07</b>	Number of Children Ever Born by Age of Parent
<b>T08</b>	Country of Birth of Person by Sex
<b>T09</b>	Ancestry by Birthplace of Parents
<b>T10</b>	Language Spoken at Home by Sex
<b>T11</b>	Proficiency in Spoken English/Language by Age
<b>T12</b>	Religious Affiliation by Age
<b>T13</b>	Type of Educational Institution Attending (Full/Part-Time Student Status by Age) by Sex
<b>T14</b>	Dwelling Structure by Household Composition and Family Composition
<b>T15</b>	Dwelling Structure by Number of Persons Usually Resident
<b>T16</b>	Dwelling Structure and Number of Bedrooms by Number of Persons Usually Resident for Family Households
<b>T17</b>	Dwelling Structure and Number of Bedrooms by Number of Persons Usually Resident for Group Households
<b>T18</b>	Tenure and Landlord Type by Dwelling Structure
<b>T19</b>	Rent (weekly) by Landlord Type
<b>T20</b>	Rent (weekly) by Family Composition for Couple Families
<b>T21</b>	Rent (weekly) by Family Composition for One Parent Families
<b>T22</b>	Total Family Income (weekly) by Number of Children for Couple Families
<b>T23</b>	Total Family Income (weekly) by Number of Children for One Parent Families
<b>T24</b>	Total Household Income (weekly) by Rent (weekly)
<b>T25</b>	Family Composition by Mortgage Repayment (monthly)
<b>T26</b>	Family Composition by Income Comparison for Parents/Partners
<b>T27</b>	Family Composition and Social Marital Status by Number of Dependent Children

---

**SECOND RELEASE TABLES (available 30 October 2012)**

---

<b>T28</b>	Selected Labour Force, Education and Migration Characteristics
<b>T29</b>	Family Composition and Labour Force Status of Parent(s)/Partners by Total Family Income (weekly)
<b>T30</b>	Non-School Qualification: Level of Education by Age by Sex
<b>T31</b>	Non-School Qualification: Field of Study by Age by Sex
<b>T32</b>	Labour Force Status by Age by Sex
<b>T33</b>	Industry of Employment by Sex
<b>T34</b>	Occupation by Sex

---

**APPENDIX 5: PLACE OF ENUMERATION PROFILE – LIST OF TABLES**

---

**FIRST RELEASE TABLES (available 21 August 2012)**

---

<b>P01</b>	Selected Person Characteristics by Sex
<b>P02</b>	Selected Medians and Averages
<b>P03</b>	Place of Usual Residence on Census Night by Age
<b>P04</b>	Age by Sex
<b>P05</b>	Registered Marital Status by Age by Sex
<b>P06</b>	Social Marital Status by Age by Sex
<b>P07</b>	Indigenous Status by Age by Sex
<b>P08</b>	Ancestry by Birthplace of Parents
<b>P09</b>	Country of Birth of Person by Sex
<b>P10</b>	Country of Birth of Person by Year of Arrival in Australia
<b>P11</b>	Proficiency in Spoken English/Language by Year of Arrival in Australia by Sex
<b>P12</b>	Proficiency in Spoken English/Language of Parents by Age of Dependent Children
<b>P13</b>	Language Spoken At Home by Sex
<b>P14</b>	Religious Affiliation by Sex
<b>P15</b>	Type of Educational Institution Attending (Full/Part-Time Student Status by Age) by Sex
<b>P16</b>	Highest Year of School Completed by Age by Sex
<b>P17</b>	Total Personal Income (weekly) by Age by Sex
<b>P18</b>	Core Activity Need for Assistance by Age by Sex
<b>P19</b>	Voluntary Work for an Organisation or Group by Age by Sex
<b>P20</b>	Unpaid Domestic Work: Number of Hours by Age by Sex
<b>P21</b>	Unpaid Assistance to a Person with a Disability by Age by Sex
<b>P22</b>	Unpaid Child Care by Age by Sex
<b>P23</b>	Relationship in Household by Age by Sex
<b>P24</b>	Number of Children Ever Born by Age of Parent
<b>P25</b>	Family Composition
<b>P26</b>	Total Family Income (weekly) by Family Composition
<b>P27</b>	Family Blending
<b>P28</b>	Total Household Income (weekly) by Household Composition
<b>P29</b>	Number of Motor Vehicles by Dwellings
<b>P30</b>	Household Composition by Number of Persons present on Census Night
<b>P31</b>	Dwelling Structure
<b>P32</b>	Tenure and Landlord Type by Dwelling Structure
<b>P33</b>	Mortgage Repayment (monthly) by Dwelling Structure
<b>P34</b>	Rent (weekly) by Landlord Type
<b>P35</b>	Type of Internet Connection by Dwelling Structure
<b>P36</b>	Dwelling Structure by Number of Bedrooms

---

**SECOND RELEASE TABLES (available 20 November 2012)**

---

<b>P37</b>	Selected Labour Force, Education and Migration Characteristics by Sex
<b>P38</b>	Non-School Qualification: Level of Education by Age by Sex
<b>P39</b>	Non-School Qualification: Field of Study by Age by Sex
<b>P40</b>	Labour Force Status by Age by Sex
<b>P41</b>	Industry of Employment by Age by Sex
<b>P42</b>	Industry of Employment by Occupation
<b>P43</b>	Occupation by Age by Sex
<b>P44</b>	Method of Travel to Work by Sex

---

## APPENDIXES: PRODUCTS AND SERVICES, 2011 (cat. no. 2011.0.55.001)

---

### APPENDIX 6: LIST OF TABLES – EXPANDED COMMUNITY PROFILE

---

#### FIRST RELEASE TABLES (available 21 August 2012)

---

<b>X01</b>	Country of Birth of Person by Age by Sex
<b>X02</b>	Country of Birth (Major Group) of Person by Age by Sex
<b>X03</b>	Country of Birth (Minor Group) of Person by Year of Arrival in Australia
<b>X04</b>	Proficiency in Spoken English/Language by Year of Arrival in Australia by Age
<b>X05</b>	Language Spoken at Home by Proficiency in Spoken English/Language by Sex
<b>X06</b>	Ancestry by Birthplace of Parents by Sex
<b>X07</b>	Ancestry of Dependent Children by Age by Birthplace of Parents
<b>X08</b>	Religious Affiliation by Age by Sex
<b>X09</b>	Total Family Income (weekly) by Number of Dependent Children for Couple Families
<b>X10</b>	Total Family Income (weekly) by Number of Dependent Children for One Parent Families
<b>X11</b>	Total Family Income (weekly) by Tenure Type by Family Composition
<b>X12</b>	Total Family Income (weekly) by Landlord Type by Family Composition
<b>X13</b>	Mortgage Repayment (monthly) by Family Composition
<b>X14</b>	Total Household Income (weekly) by Tenure Type for Family Households
<b>X15</b>	Total Household Income (weekly) by Tenure Type for Lone Person Households
<b>X16</b>	Total Household Income (weekly) by Tenure Type for Group Households
<b>X17</b>	Total Household Income (weekly) by Landlord Type for Family Households
<b>X18</b>	Total Household Income (weekly) by Landlord Type for Lone Person Households
<b>X19</b>	Total Household Income (weekly) by Landlord Type for Group Households
<b>X20</b>	Total Household Income (weekly) by Rent (weekly) for Family Households
<b>X21</b>	Total Household Income (weekly) by Rent (weekly) for Lone Person Households
<b>X22</b>	Total Household Income (weekly) by Rent (weekly) for Group Households
<b>X23</b>	Dwelling Structure by Rent (weekly)
<b>X24</b>	Mortgage Repayment (monthly) by Dwelling Structure
<b>X25</b>	Dwelling Structure by Household Composition and Family Composition
<b>X26</b>	Dwelling Structure and Number of Motor Vehicles by Number of Persons Usually Resident for Family Households
<b>X27</b>	Dwelling Structure and Number of Motor Vehicles for Lone Person Household
<b>X28</b>	Dwelling Structure and Number of Motor Vehicles by Number of Persons Usually Resident for Group Households
<b>X29</b>	Dwelling Structure and Number of Bedrooms by Number of Persons Usually Resident for Family Households
<b>X30</b>	Dwelling Structure and Number of Bedrooms for Lone Person Households
<b>X31</b>	Dwelling Structure and Number of Bedrooms by Number of Persons Usually Resident for Group Households
<b>X32</b>	Family Composition and Birthplace of Parents by Age of Dependent Children

---

#### SECOND RELEASE TABLES (available 20 November 2012)

---

<b>X33</b>	Labour Force Status by Sex of Parents by Age of Dependent Children for Couple Families
<b>X34</b>	Labour Force Status by Sex of Parent by Age of Dependent Children for One Parent Families
<b>X35</b>	Non-School Qualification: Field of Study by Occupation by Sex
<b>X36</b>	Non-School Qualification: Level of Education by Occupation by Sex
<b>X37</b>	Non-School Qualification: Level of Education by Industry of Employment by Sex
<b>X38</b>	Industry of Employment by Hours Worked by Sex
<b>X39</b>	Occupation by Hours Worked by Sex
<b>X40</b>	Total Family Income (weekly) by Labour Force Status of Partners for Couple Families with no Children
<b>X41</b>	Total Family Income (weekly) by Labour Force Status of Parents/Partners for Couple Families with Children
<b>X42</b>	Total Family Income (weekly) by Labour Force Status of Parent for One Parent Families

---

**APPENDIX 7: WORKING POPULATION PROFILE – LIST OF TABLES**

---

SECOND RELEASE TABLES (available 20 November 2012)

---

<b>W01</b>	Labour Force Status by Age by Sex
<b>W02</b>	Employment Type by Age by Sex
<b>W03</b>	Employment Type by Hours Worked by Age
<b>W04</b>	Employment Type by Labour Force Status by Age by Sex
<b>W05</b>	Employment Type by Country of Birth of Person by Sex
<b>W06</b>	Employment Type by Total Personal Income (weekly) by Sex
<b>W07</b>	Industry of Employment by Year of Arrival in Australia
<b>W08</b>	Industry of Employment by Year of Arrival in Australia by Proficiency in Spoken English
<b>W09</b>	Industry of Employment by Sex
<b>W10</b>	Industry of Employment by Owner Managers by Number of Employees
<b>W11</b>	Industry of Employment by Hours Worked by Sex
<b>W12</b>	Industry of Employment by Occupation
<b>W13</b>	Occupation by Sex
<b>W14</b>	Occupation of Owner Managers by Number of Employees
<b>W15</b>	Occupation by Total Personal Income (weekly) by Public/Private Employee Indicator
<b>W16</b>	Occupation by Total Personal Income (weekly) by Age
<b>W17</b>	Occupation by Total Personal Income (weekly) by Hours Worked
<b>W18</b>	Occupation by Total Personal Income (weekly) by Non-School Qualification: Level of Education
<b>W19</b>	Occupation by Total Personal Income (weekly) for Students Aged 15-24 Years
<b>W20</b>	Occupation by Hours Worked for Students Aged 15-24 Years
<b>W21</b>	Method of Travel to Work by Occupation
<b>W22</b>	Method of Travel to Work by Age by Sex
<b>W23</b>	Labour Force Status by Type of Educational Institution Attending (Full/Part-Time Student Status) by Age

---



## APPENDIX 8: TABLEBUILDER BASIC DATA ITEMS

Cultural and Language Diversity  
Education and Qualifications  
Employment, Income and Unpaid Work  
Disability, Carers and Need for Assistance  
Children and Childcare  
Usual Address and Internal Migration  
Persons and Relationships  
Persons in Private Dwellings  
Persons in Non-Private Dwellings  
Family Characteristics  
Dwelling Characteristics  
Household Income and Expenditure

### PERSON TOPICS

#### Cultural and Language Diversity Classifications Geographical Areas (Usual Residence)

*\* Denotes available in Second Release*

##### Age

Age in Single Years (AGEP)  
Age in Five Year Groups (AGE5P)  
Age in Ten Year Groups (AGE10P)

##### Ancestry

Ancestry 1<sup>st</sup> Response (ANC1P)  
Ancestry 2<sup>nd</sup> Response (ANC2P)

##### Birthplace

Birthplace of Female Parent (BPFP)  
Birthplace of Male Parent (BPMP)  
Birthplace of Parents (BPPP)  
Country of Birth of Person (BPLP)

##### Citizenship

Australian Citizenship (CITP)

##### Income

Total Personal Income (weekly) (INCP)

##### Indigenous Status

Indigenous Status (INGP)

##### Language

Language Spoken at Home (LANP)  
Proficiency in Spoken English (ENGP)  
Proficiency in Spoken English/Language (ENGLP)

##### Migration

Year of Arrival in Australia (ranges) (YARRP)

##### Marital Status

Registered Marital Status (MSTP)  
Social Marital Status (MDCP)

##### Religion

Religious Affiliation (RELP)

##### Sex

Sex (SEXP)

#### Education and Qualifications Classifications Geographical Areas (Usual Residence)

*\* Denotes available in Second Release*

##### Age

Age in Single Years (AGEP)  
Age in Five Year Groups (AGE5P)  
Age in Ten Year Groups (AGE10P)

##### Education

Educational Institution: Attendee Status (TYSTAP)  
Full-Time/Part-Time Student Status (STUP)  
Highest Year of School Completed (HSCP)  
Type of Educational Institution Attending (TYPP)

##### Employment

Labour Force Status (LFSP)\*

##### Indigenous Status

Indigenous Status (INGP)

##### Industry

Industry of Employment (INDP)\*

##### Language

Language Spoken at Home (LANP)  
Proficiency in Spoken English (ENGP)  
Proficiency in Spoken English/Language (ENGLP)

##### Marital Status

Registered Marital Status (MSTP)  
Social Marital Status (MDCP)

##### Occupation

Occupation (OCCP)\*

##### Qualifications

Non-School Qualification: Field of Study (QALFP)\*  
Non-School Qualification: Level of Education (QALLP)\*

##### Sex

Sex (SEXP)

## APPENDIXES: PRODUCTS AND SERVICES, 2011 (cat. no. 2011.0.55.001)

### Employment, Income and Unpaid Work Classifications Geographical Areas (Usual Residence) Geographical Areas (Place of Work)\*Second Release Cube

\* Denotes available in Second Release

#### Age

Age in Single Years (AGEP)  
Age in Five Year Groups (AGE5P)  
Age in Ten Year Groups (AGE10P)

#### Birthplace

Country of Birth of Person (BPLP)

#### Education

Full-Time/Part-Time Student Status (STUP)  
Highest Year of School Completed (HSCP)  
Type of Educational Institution Attending (TYPP)

#### Employment

Employment Type (EMTP)\*  
Hours Worked (ranges) (HRWRP)\*  
Labour Force Status and Hours Worked Not Stated (LFHRP)\*  
Labour Force Status (LFSP)\*  
Number of Employees (EMPP)\*  
Public/Private Employer Indicator (GNGP)\*

#### Income

Total Personal Income (weekly) (INCP)

#### Indigenous Status

Indigenous Status (INGP)

#### Industry

Industry of Employment (INDP)\*

#### Language

Language Spoken at Home (LANP)  
Proficiency in Spoken English (ENGP)  
Proficiency in Spoken English/Language (ENGLP)

#### Method of Travel to Work

Method of Travel to Work (MTWP)\*

#### Need for Assistance

Core Activity Need for Assistance (ASSNP)

#### Migration

Year of Arrival in Australia (ranges) (YARRP)

#### Occupation

Occupation (OCCP)\*

#### Sex

Sex (SEXP)

#### Unpaid Work

Unpaid Assistance to a Person with a Disability (UNCAREP)  
Unpaid Domestic Work: Number of Hours (DOMP)  
Voluntary Work for an Organisation or Group (VOLWP)

### Disability, Carers and Need for Assistance Classifications Geographical Areas (Usual Residence)

\* Denotes available in Second Release

#### Age

Age in Single Years (AGEP)  
Age in Five Year Groups (AGE5P)  
Age in Ten Year Groups (AGE10P)

#### Birthplace

Country of Birth of Person (BPLP)

#### Education

Type of Educational Institution Attending (TYPP)

#### Employment

Labour Force Status (LFSP)\*

#### Income

Total Personal Income (weekly) (INCP)

#### Indigenous Status

Indigenous Status (INGP)

#### Language

Language Spoken at Home (LANP)  
Proficiency in Spoken English (ENGP)  
Proficiency in Spoken English/Language (ENGLP)

#### Method of Travel to Work

Method of Travel to Work (MTWP)\*

#### Migration

Year of Arrival in Australia (ranges) (YARRP)

#### Need for Assistance

Core Activity Need for Assistance (ASSNP)

#### Sex

Sex (SEXP)

#### Unpaid Work

Unpaid Assistance to a Person with a Disability (UNCAREP)  
Unpaid Domestic Work: Number of Hours (DOMP)  
Voluntary Work for an Organisation or Group (VOLWP)

## APPENDIXES: PRODUCTS AND SERVICES, 2011 (cat. no. 2011.0.55.001)

### Children and Childcare Classifications Geographical Areas (Usual Residence)

\* Denotes available in Second Release

#### Age

Age in Single Years (AGEP)  
Age in Five Year Groups (AGE5P)  
Age in Ten Year Groups (AGE10P)

#### Birthplace

Birthplace of Female Parent (BPFP)  
Birthplace of Male Parent (BPMP)  
Birthplace of Parents (BPPP)  
Country of Birth of Person (BPLP)

#### Children

Child Type (CTPP)  
Number of Children Ever Born (ranges) (TISRP)

#### Education

Full-Time/Part-Time Student Status (STUP)  
Type of Educational Institution Attending (TYPP)

#### Employment

Hours Worked (ranges) (HRWRP)\*  
Labour Force Status (LFSP)\*

#### Indigenous Status

Indigenous Status (INGP)

#### Income

Total Personal Income (weekly) (INCP)

#### Language

Proficiency in Spoken English (ENGP)

#### Marital Status

Registered Marital Status (MSTP)  
Social Marital Status (MDCP)

#### Relationship

Relationship in Household (RLHP)

#### Sex

Sex (SEXP)  
Sex of Lone Parent (SLPP)

#### Unpaid Work/Childcare

Unpaid Child Care (CHCAREP)  
Unpaid Domestic Work: Number of Hours (DOMP)

### Usual Address and Internal Migration Classifications Geographical Areas (Usual Residence)

\* Denotes available in Second Release

#### Age

Age in Single Years (AGEP)  
Age in Five Year Groups (AGE5P)  
Age in Ten Year Groups (AGE10P)

#### Birthplace

Country of Birth of Person (BPLP)

#### Citizenship

Australian Citizenship (CITP)

#### Employment

Labour Force Status (LFSP)\*

#### Income

Total Personal Income (weekly) (INCP)

#### Indigenous Status

Indigenous Status (INGP)

#### Industry

Industry of Employment (INDP)\*

#### Internal Migration

LGA of Usual Residence Five Years Ago (LGAU5P)\*  
LGA of Usual Residence One Year Ago (LGAU1P)\*  
Place of Usual Residence Five Years Ago (PUR5P)\*  
Place of Usual Residence One Year Ago (PUR1P)\*  
Usual Address Five Years Ago Indicator (UA15P)\*  
Usual Address Indicator Census Night (UA1CP)  
Usual Address One Year Ago Indicator (UA11P)\*

#### Language

Language Spoken at Home (LANP)  
Proficiency in Spoken English (ENGP)

#### Occupation

Occupation (OCCP)\*

#### Qualifications

Non-School Qualification: Level of Education (QALLP)\*

#### Religion

Religious Affiliation (RELP)

#### Sex

Sex (SEXP)

## APPENDIXES: PRODUCTS AND SERVICES, 2011 (cat. no. 2011.0.55.001)

### Persons and Relationships Classifications Geographical Areas (Usual Residence)

\* Denotes available in Second Release

#### Age

Age in Single Years (AGEP)  
Age in Five Year Groups (AGE5P)  
Age in Ten Year Groups (AGE10P)

#### Birthplace

Country of Birth of Person (BPLP)

#### Children

Number of Children Ever Born (ranges) (TISRP)

#### Education

Type of Educational Institution Attending (TYPP)

#### Income

Total Personal Income (weekly) (INCP)

#### Indigenous Status

Indigenous Status (INGP)

#### Industry

Industry of Employment (INDP)\*

#### Employment

Labour Force Status (LFSP)\*

#### Marital Status

Registered Marital Status (MSTP)  
Social Marital Status (MDCP)

#### Occupation

Occupation (OCCP)\*

#### Qualifications

Non-School Qualification: Level of Education (QALLP)\*

#### Relationship

Family/Household Reference Person Indicator (RPIP)  
Relationship in Household (RLHP)

#### Sex

Sex (SEXP)

### Persons in Private Dwellings Classifications Geographical Areas (Enumeration)

\* Denotes available in Second Release

#### Age

Age in Single Years (AGEP)  
Age in Five Year Groups (AGE5P)  
Age in Ten Year Groups (AGE10P)

#### Dwelling Characteristics

Dwelling Location (DLOD)  
Dwelling Structure (STRD)  
Dwelling Type (DWTD)  
Indigenous Household Indicator (INGDWTD)  
Number of Bedrooms in Private Dwelling (ranges) (BEDRD)  
Tenure and Landlord Type (TENLLD)

#### Household Composition

Family Household Composition (Dwelling) (HCFMD)  
Household Composition (HHCD)

#### Income

Total Personal Income (weekly) (INCP)

#### Internet Connection

Type of Internet Connection (NEDD)

#### Marital Status

Registered Marital Status (MSTP)  
Social Marital Status (MDCP)

#### Mortgage/Rent Repayments

Mortgage Repayments (monthly) Ranges (MRERD)  
Rent (weekly) Ranges (RNTRD)

#### Motor Vehicles

Number of Motor Vehicles (ranges) (VEHRD)

#### Sex

Sex (SEXP)

### Persons in Non-Private Dwellings Classifications Geographical Areas (Enumeration)

*\* Denotes available in Second Release*

---

#### **Age**

Age in Single Years (AGEP)  
Age in Five Year Groups (AGE5P)  
Age in Ten Year Groups (AGE10P)

#### **Birthplace**

Country of Birth of Person (BPLP)

#### **Education**

Highest Year of School Completed (HSCP)

#### **Employment**

Labour Force Status (LFSP)\*

#### **Income**

Total Personal Income (weekly) (INCP)

#### **Indigenous Status**

Indigenous Status (INGP)

#### **Industry**

Industry of Employment (INDP)\*

#### **Marital Status**

Registered Marital Status (MSTP)  
Social Marital Status (MDCP)

#### **Need for Assistance**

Core Activity Need for Assistance (ASSNP)

#### **Non-Private Dwelling Characteristics**

Residential Status in a Non-Private Dwelling (RLNP)  
Type of Non-Private Dwelling (NPDD)

#### **Occupation**

Occupation (OCCP)\*

#### **Sex**

Sex (SEXP)

---

### FAMILY TOPICS

---

#### Family Characteristics Classifications Geographical Areas

*\* Denotes available in Second Release*

---

#### **Children in Families**

- Count of All Children in Family (CACF)
- Count of Dependent Children in Family (CDCF)
- Count of Non-Dependent Children in Family (CNDCF)

#### **Family Characteristics**

- Family Blending (FBLF)
- Family Number (FNOF)
- Relationship Between Families (FRLF)
- Same-Sex Couple Indicator (SSCF)

#### **Family Composition**

- Family Composition (FMCF)
- Family Household Composition (Family) (HCFMF)

#### **Family Income**

- Total Family Income (weekly) (FINF)

#### **Family Labour Force**

- Labour Force Status of Parents/Partners in Families (LFSF)\*

#### **Persons in Families**

- Count of Persons in Family (CPRF)
-

**DWELLING TOPICS**

---

**Dwelling Characteristics Classifications  
Geographical Areas (Enumeration)***\* Denotes available in Second Release***Dwelling Characteristics**

Dwelling Location (DLOD)  
Dwelling Structure (STRD)  
Dwelling Type (DWTD)  
Indigenous Household Indicator (INGDWTD)  
Landlord Type (LLDD)  
Number of Bedrooms in Private Dwelling (ranges) (BEDRD)  
Number of Persons Usually Resident in Dwelling (NPRD)  
Tenure Type (TEND)  
Type of Non-Private Dwelling (NPDD)

**Internet Connection**

Type of Internet Connection (NEDD)

**Mortgage/Rent Repayments**

Mortgage Repayments (monthly) Ranges (MRERD)  
Rent (weekly) Ranges (RNTRD)

**Motor Vehicles**

Number of Motor Vehicles (ranges) (VEHRD)

**Household Income and Expenditure Classifications  
Geographical Areas (Enumeration)***\* Denotes available in Second Release***Household Characteristics**

Indigenous Household Indicator (INGDWTD)  
Number of Persons Usually Resident in Dwelling (NPRD)  
Tenure and Landlord Type (TENLLD)

**Household Composition**

Family Household Composition (Dwelling) (HCFMD)  
Household Composition (HHCD)

**Household Income**

Total Household Income (weekly) (HIND)

**Mortgage/Rent Repayments**

Mortgage Repayments (monthly) Ranges (MRERD)  
Rent (weekly) Ranges (RNTRD)

## APPENDIX 9: TABLEBUILDER PRO DATA ITEMS

Counting Persons, Place of Usual Residence  
Counting Persons, Place of Enumeration  
Counting Families, Place of Usual Residence  
Counting Dwellings, Place of Enumeration  
Counting Employed Persons, Place of Work

### Counting Persons, Place of Usual Residence Geographical Areas (Usual Residence)

*\* Denotes available in Second Release*

#### **Persons Classifications**

##### ***People Characteristics***

AGEP	Age in Single Years
AGE5P	Age in Five Year Groups
AGE10P	Age in Ten Year Groups
IFAGEP	Imputation Flag for Age
SEXP	Sex

##### ***Cultural and Language Diversity***

ANCP	Ancestry Multi Response
ANC1P	Ancestry 1st Response
ANC2P	Ancestry 2nd Response
BPFP	Birthplace of Female Parent
BPLP	Country of Birth of Person
BPMP	Birthplace of Male Parent
BPPP	Birthplace of Parents
CITP	Australian Citizenship
ENGLP	Proficiency in Spoken English/Language
ENGP	Proficiency in Spoken English
INGP	Indigenous Status
LANP	Language Spoken at Home
RELP	Religious Affiliation
YARP	Year of Arrival in Australia

##### ***Disability, Carers and Need for Assistance***

ASSNP	Core Activity Need for Assistance
UNCAREP	Unpaid Assistance to a Person with a Disability

##### ***Children and Childcare***

CHCAREP	Unpaid Child Care
CTPP	Child Type
SLPP	Sex of Lone Parent
TISP	Number of Children Ever Born

##### ***Employment, Income and Unpaid Work***

CDEP	Community Development Employment Projects Participation*
DOMP	Unpaid Domestic Work: Number of Hours
EMPP	Number of Employees*
EMTP	Employment Type*
GNGP	Public/Private Employer Indicator*
HRSP	Hours Worked*
INCP	Total Personal Income (weekly)
INDP	Industry of Employment*
LFHRP	Labour Force Status and Hours Worked Not Stated*
LFSP	Labour Force Status*
MTWP	Method of Travel to Work*
OCCP	Occupation*
VOLWP	Voluntary Work for an Organisation or Group

##### ***Education and Qualifications***

HSCP	Highest Year of School Completed
QALFP	Non-School Qualification: Field of Study*
QALLP	Non-School Qualification: Level of Education*
STUP	Full-Time/Part-Time Student Status
TYP	Type of Educational Institution Attending
TYSTAP	Educational Institution: Attendee Status

##### ***People and Relationships***

IFMSTP	Imputation Flag for Registered Marital Status
MDCP	Social Marital Status



## APPENDIXES: PRODUCTS AND SERVICES, 2011 (cat. no. 2011.0.55.001)

---

MSTP	Registered Marital Status
RLHP	Relationship in Household
RPIP	Family/Household Reference Person Indicator

### ***Usual Address and Internal Migration***

IFPURP	Imputation Flag for Place of Usual Residence
LGAU1P	LGA of Usual Residence One Year Ago*
LGAU5P	LGA of Usual Residence Five Years Ago*
PUR1P	Place of Usual Residence One Year Ago*
PUR5P	Place of Usual Residence Five Years Ago*
RLNP	Residential Status in a Non-Private Dwelling
UAICP	Usual Address Indicator Census Night
UAI1P	Usual Address One Year Ago Indicator*
UAI5P	Usual Address Five Years Ago Indicator*

---

**Counting Persons, Place of Enumeration  
Geographical Areas (Enumeration)**

\* Denotes available in Second Release

**Persons Classifications*****People Characteristics***

AGEP	Age in Single Years
AGE5P	Age in Five Year Groups
AGE10P	Age in Ten Year Groups
IFAGEP	Imputation Flag for Age
SEXP	Sex

***Cultural and Language Diversity***

ANCP	Ancestry Multi Response
ANC1P	Ancestry 1st Response
ANC2P	Ancestry 2nd Response
BPFP	Birthplace of Female Parent
BPLP	Country of Birth of Person
BPMP	Birthplace of Male Parent
BPPP	Birthplace of Parents
CITP	Australian Citizenship
ENGLP	Proficiency in Spoken English/Language
ENGP	Proficiency in Spoken English
INGP	Indigenous Status
LANP	Language Spoken at Home
RELP	Religious Affiliation
YARP	Year of Arrival in Australia

***Disability, Carers and Need for Assistance***

ASSNP	Core Activity Need for Assistance
UNCAREP	Unpaid Assistance to a Person with a Disability

***Children and Childcare***

CHCAREP	Unpaid Child Care
CTPP	Child Type
SLPP	Sex of Lone Parent
TISP	Number of Children Ever Born

***Employment, Income and Unpaid Work***

CDEP	Community Development Employment Projects Participation*
DOMP	Unpaid Domestic Work: Number of Hours
EMPP	Number of Employees*
EMTP	Employment Type*
GNGP	Public/Private Employer Indicator*
HRSP	Hours Worked*
INCP	Total Personal Income (weekly)
INDP	Industry of Employment*
LFHRP	Labour Force Status and Hours Worked Not Stated*
LFSP	Labour Force Status*
MTWP	Method of Travel to Work*
OCCP	Occupation*
VOLWP	Voluntary Work for an Organisation or Group

***Education and Qualifications***

HSCP	Highest Year of School Completed
QALFP	Non-School Qualification: Field of Study*
QALLP	Non-School Qualification: Level of Education*
STUP	Full-Time/Part-Time Student Status
TYPP	Type of Educational Institution Attending
TYSTAP	Educational Institution: Attendee Status

***People and Relationships***

IFMSTP	Imputation Flag for Registered Marital Status
MDCP	Social Marital Status
MSTP	Registered Marital Status
RLHP	Relationship in Household
RPIP	Family/Household Reference Person Indicator

***Usual Address and Internal Migration***

RLNP	Residential Status in a Non-Private Dwelling
UAICP	Usual Address Indicator Census Night
UA11P	Usual Address One Year Ago Indicator*
UA15P	Usual Address Five Years Ago Indicator*

## APPENDIXES: PRODUCTS AND SERVICES, 2011 (cat. no. 2011.0.55.001)

---

### **Family Classifications**

#### ***Family Characteristics***

CACF	Count of All Children in Family
CDCAF	Count of Dependent Children Under 15 Temporarily Absent
CDCF	Count of Dependent Children in Family
CDSAF	Count of Dependent Students (15-24) Temporarily Absent
CNDAF	Count of Non-Dependent Children Temporarily Absent
CNDCF	Count of Non-Dependent Children in Family
CPAF	Count of Persons Temporarily Absent from Family
CPRF	Count of Persons in Family
FBLF	Family Blending
FIDF	Family Income Derivation Indicator
FINF	Total Family Income (weekly)
FMCF	Family Composition
FNOF	Family Number
FRLF	Relationship Between Families
HCFMF	Family Household Composition (Family)
LFSF	Labour Force Status of Parents/Partners in Families*
SPLF	Location of Spouse
SSCF	Same-Sex Couple Indicator

### **Dwelling Classifications**

#### ***Dwelling Characteristics***

BEDD	Number of Bedrooms in Private Dwelling
DLOD	Dwelling Location
DWTD	Dwelling Type
NEDD	Type of Internet Connection
NPDD	Type of Non-Private Dwelling
STRD	Dwelling Structure
VEHD	Number of Motor Vehicles

#### ***Household Characteristics***

CPAD	Count of Persons Temporarily Absent from Household
HCFMD	Family Household Composition (Dwelling)
HHCD	Household Composition
IFNMFD	Imputation Flag for Number of Males and Females in Dwelling
INGDWD	Indigenous Household Indicator
MV1D	Household One Year Mobility Indicator*
MV5D	Household Five Year Mobility Indicator*
NPRD	Number of Persons Usually Resident in Dwelling

#### ***Household Income and Expenditure***

HIDD	Household Income Derivation Indicator
HIED	Equivalised Total Household Income (weekly)
HIND	Total Household Income (weekly)
LLDD	Landlord Type
MRED	Mortgage Repayments (monthly) Dollar Values
MRERD	Mortgage Repayments (monthly) Ranges
RNTD	Rent (weekly) Dollar Values
RNTRD	Rent (weekly) Ranges
TEND	Tenure Type
TENLLD	Tenure and Landlord Type

---

### Counting Families, Place of Usual Residence Geographical Areas

\* Denotes available in Second Release

#### Family Classifications

##### **Family Characteristics**

CACF	Count of All Children in Family
CDCAF	Count of Dependent Children Under 15 Temporarily Absent
CDCF	Count of Dependent Children in Family
CDSAF	Count of Dependent Students (15-24) Temporarily Absent
CNDAF	Count of Non-Dependent Children Temporarily Absent
CNDCF	Count of Non-Dependent Children in Family
CPAF	Count of Persons Temporarily Absent from Family
CPRF	Count of Persons in Family
FBLF	Family Blending
FIDF	Family Income Derivation Indicator
FINF	Total Family Income (weekly)
FMTF	Family Composition
FNOF	Family Number
FRLF	Relationship Between Families
HCFMF	Family Household Composition (Family)
LFSF	Labour Force Status of Parents/Partners in Families*
SPLF	Location of Spouse
SSCF	Same-Sex Couple Indicator

#### Dwelling Classifications

##### **Dwelling Characteristics**

BEDD	Number of Bedrooms in Private Dwelling
DLOD	Dwelling Location
DWTD	Dwelling Type
NEDD	Type of Internet Connection
NPDD	Type of Non-Private Dwelling
STRD	Dwelling Structure
VEHD	Number of Motor Vehicles

##### **Household Characteristics**

CPAD	Count of Persons Temporarily Absent from Household
HCFMD	Family Household Composition (Dwelling)
HHCD	Household Composition
IFNMFD	Imputation Flag for Number of Males and Females in Dwelling
INGDWTD	Indigenous Household Indicator
MV1D	Household One Year Mobility Indicator*
MV5D	Household Five Year Mobility Indicator*
NPRD	Number of Persons Usually Resident in Dwelling

##### **Household Income and Expenditure**

HIDD	Household Income Derivation Indicator
HIED	Equivalised Total Household Income (weekly)
HIND	Total Household Income (weekly)
LLDD	Landlord Type
MRED	Mortgage Repayments (monthly) Dollar Values
MRERD	Mortgage Repayments (monthly) Ranges
RNTD	Rent (weekly) Dollar Values
RNTRD	Rent (weekly) Ranges
TEND	Tenure Type
TENLLD	Tenure and Landlord Type

### Counting Dwellings, Place of Enumeration Geographical Areas (Enumeration)

\* Denotes available in Second Release

#### **Dwelling Classifications**

##### ***Dwelling Characteristics***

BEDD	Number of Bedrooms in Private Dwelling
DLOD	Dwelling Location
DWTD	Dwelling Type
NEDD	Type of Internet Connection
NPDD	Type of Non-Private Dwelling
STRD	Dwelling Structure
VEHD	Number of Motor Vehicles

##### ***Household Characteristics***

CPAD	Count of Persons Temporarily Absent from Household
HCFMD	Family Household Composition (Dwelling)
HHCD	Household Composition
IFNMFD	Imputation Flag for Number of Males and Females in Dwelling
INGDWTD	Indigenous Household Indicator
MV1D	Household One Year Mobility Indicator*
MV5D	Household Five Year Mobility Indicator*
NPRD	Number of Persons Usually Resident in Dwelling

##### ***Household Income and Expenditure***

HIDD	Household Income Derivation Indicator
HIED	Equivalised Total Household Income (weekly)
HIND	Total Household Income (weekly)
LLDD	Landlord Type
MRED	Mortgage Repayments (monthly) Dollar Values
MRERD	Mortgage Repayments (monthly) Ranges
RNTD	Rent (weekly) Dollar Values
RNTRD	Rent (weekly) Ranges
TEND	Tenure Type
TENLLD	Tenure and Landlord Type

## APPENDIXES: PRODUCTS AND SERVICES, 2011 (cat. no. 2011.0.55.001)

### Counting Employed Persons, Place of Work\* Geographical Areas (Usual Residence) Geographical Areas (Place of Work)

\* Denotes available in Second Release

#### Persons Classifications

##### **People Characteristics**

AGEP	Age in Single Years
AGE5P	Age in Five Year Groups
AGE10P	Age in Ten Year Groups
IFAGEP	Imputation Flag for Age
SEXP	Sex

##### **Cultural and Language Diversity**

ANCP	Ancestry Multi Response
ANC1P	Ancestry 1st Response
ANC2P	Ancestry 2nd Response
BFPF	Birthplace of Female Parent
BPLP	Country of Birth of Person
BPMP	Birthplace of Male Parent
BPPP	Birthplace of Parents
CITP	Australian Citizenship
ENGLP	Proficiency in Spoken English/Language
ENGP	Proficiency in Spoken English
INGP	Indigenous Status
LANP	Language Spoken at Home
RELP	Religious Affiliation
YARP	Year of Arrival in Australia

##### **Disability, Carers and Need for Assistance**

ASSNP	Core Activity Need for Assistance
UNCAREP	Unpaid Assistance to a Person with a Disability

##### **Children and Childcare**

CHCAREP	Unpaid Child Care
SLPP	Sex of Lone Parent
TISP	Number of Children Ever Born

##### **Employment, Income and Unpaid Work**

CDEP	Community Development Employment Projects Participation
DOMP	Unpaid Domestic Work: Number of Hours
EMPP	Number of Employees
EMTP	Employment Type
GNGP	Public/Private Employer Indicator
HRSP	Hours Worked
INCP	Total Personal Income (weekly)
INDP	Industry of Employment
LFHRP	Labour Force Status and Hours Worked Not Stated
LFSP	Labour Force Status
MTWP	Method of Travel to Work
OCCP	Occupation
VOLWP	Voluntary Work for an Organisation or Group

##### **Education and Qualifications**

HSCP	Highest Year of School Completed
QALFP	Non-School Qualification: Field of Study
QALLP	Non-School Qualification: Level of Education
STUP	Full-Time/Part-Time Student Status
TYPP	Type of Educational Institution Attending
TYSTAP	Educational Institution: Attendee Status

##### **People and Relationships**

IFMSTP	Imputation Flag for Registered Marital Status
MDCP	Social Marital Status
MSTP	Registered Marital Status
RLHP	Relationship in Household
RPIP	Family/Household Reference Person Indicator

##### **Usual Address and Internal Migration**

RLNP	Residential Status in a Non-Private Dwelling
UAICP	Usual Address Indicator Census Night
UAI1P	Usual Address One Year Ago Indicator
UAI5P	Usual Address Five Years Ago Indicator

## APPENDIXES: PRODUCTS AND SERVICES, 2011 (cat. no. 2011.0.55.001)

---

### APPENDIX 10: 2011 CENSUS PRODUCTS BY GEOGRAPHIC AVAILABILITY

---

Data will be released in products across three phases. The geographic areas that will be available at each point of release are:

---

First Release	Australia State/Territory Statistical Area Level 2-4 Statistical Area Level 1 Greater Capital City Area Indigenous Structure Statistical Local Area Local Government Area State Suburb Postal Area Commonwealth Electoral Division State Electoral Division Natural Resources Management Region Australian Drainage Division
Second Release	Significant Urban Area Section of State / Urban Centre and Localities Structure Mesh Block Counts
Third Release	Remoteness Area

---

\* Mesh Blocks will only be available for basic person and dwelling counts

## APPENDIXES: PRODUCTS AND SERVICES, 2011 (cat. no. 2011.0.55.001)

TABLE ONE – ABS STRUCTURES

Mesh Blocks have been excluded from the table and output for Mesh Blocks will be on basic person and dwelling counts as in 2006.

	GEOGRAPHIES								
	Australia	State / Territory	Statistical Area Level 2 – 4	Statistical Area Level 1	Greater Capital City Statistical Area	Indigenous Structure (a)	Significant Urban Area	Section of State/Urban Centres and Localities Structure	Remoteness Area
<b>CENSUS PRODUCTS</b>									
<b>QuickStats</b>	*	*	*	*	*	*	*	*	*
<b>TableBuilder</b>									
Basic	*	*	*	*	*	*	*	*	*
Pro	*	*	*	*	*	*	*	*	*
<b>Community Profiles</b>									
Basic	*	*	*	*	*		*	*	*
Place of Enumeration	*	*	*	*	*		*	*	*
Aboriginal and Torres Strait Islander peoples (Indigenous)	*	*	*		*	*			*
Time Series	*	*	*		*				
Expanded	*	*	*		*		*		
Working Population	*	*	*		*				
<b>DataPacks</b>									
Basic	*	*	*	*	*		*	*	*
Place of Enumeration	*	*	*	*	*		*	*	*
Aboriginal and Torres Strait Islander peoples (Indigenous)	*	*	*		*	*			*
Time Series	*	*	*		*				
Expanded	*	*	*		*		*		
Working Population	*	*	*		*				
Estimated Resident Population	*	*	*		*	(c)			*
<b>Socio-Economic Indexes for Areas (b)</b>		*	*	*					

(a) Indigenous Structure comprises Indigenous Regions, Indigenous Areas and Indigenous Locations.

(b) The smallest geographic area for which SEIFA will be constructed will be the SA1. SLA and LGA indexes will be constructed on a best-fit approximation of whole SA1s. SEIFA scores will not be constructed for larger areas. However, similar to 2006, an interactive spreadsheet will be available that will show the distribution of scores within these larger areas.

(c) Estimated Resident Population includes Indigenous Regions.



## APPENDIXES: PRODUCTS AND SERVICES, 2011 (cat. no. 2011.0.55.001)

TABLE TWO – NON–ABS STRUCTURES

GEOGRAPHIES								
	Statistical Local Area	Local Government Area	State Suburb	Postal Area	Commonwealth Electoral Division	State Electoral Division	Natural Resource Management Region	Australian Drainage Division
<b>CENSUS PRODUCTS</b>								
<b>QuickStats</b>	*	*	*	*	*	*		
<b>TableBuilder</b>								
Basic	*	*	*	*	*	*	*	*
Pro	*	*	*	*	*	*	*	*
<b>Community Profiles</b>								
Basic	*	*	*	*	*	*		
Place of Enumeration	*	*	*	*	*	*		
Aboriginal and Torres Strait Islander peoples (Indigenous)	*	*						
Time Series	*	*						
Expanded	*	*						
Working Population		*						
<b>DataPacks</b>								
Basic	*	*	*	*	*	*		
Place of Enumeration	*	*	*	*	*	*		
Aboriginal and Torres Strait Islander peoples (Indigenous)	*	*						
Time Series	*	*						
Expanded	*	*						
Working Population		*						
Estimated Resident Population	*	*						
<b>Socio-Economic Indexes for Areas (a)</b>	*	*	*	*	*			

(a) The smallest geographic area for which SEIFA will be constructed will be the SA1. SLA and LGA indexes will be constructed on a best-fit approximation of whole SA1s. SEIFA scores will not be constructed for larger areas. However, similar to 2006, an interactive spreadsheet will be available that will show the distribution of scores within these larger areas.

APPENDIX 11: AUSTRALIAN STATISTICAL GEOGRAPHY STANDARD: STRUCTURE AND SUMMARY FOR CENSUS

DIAGRAM 1: ASGS ABS STRUCTURES FOR CENSUS

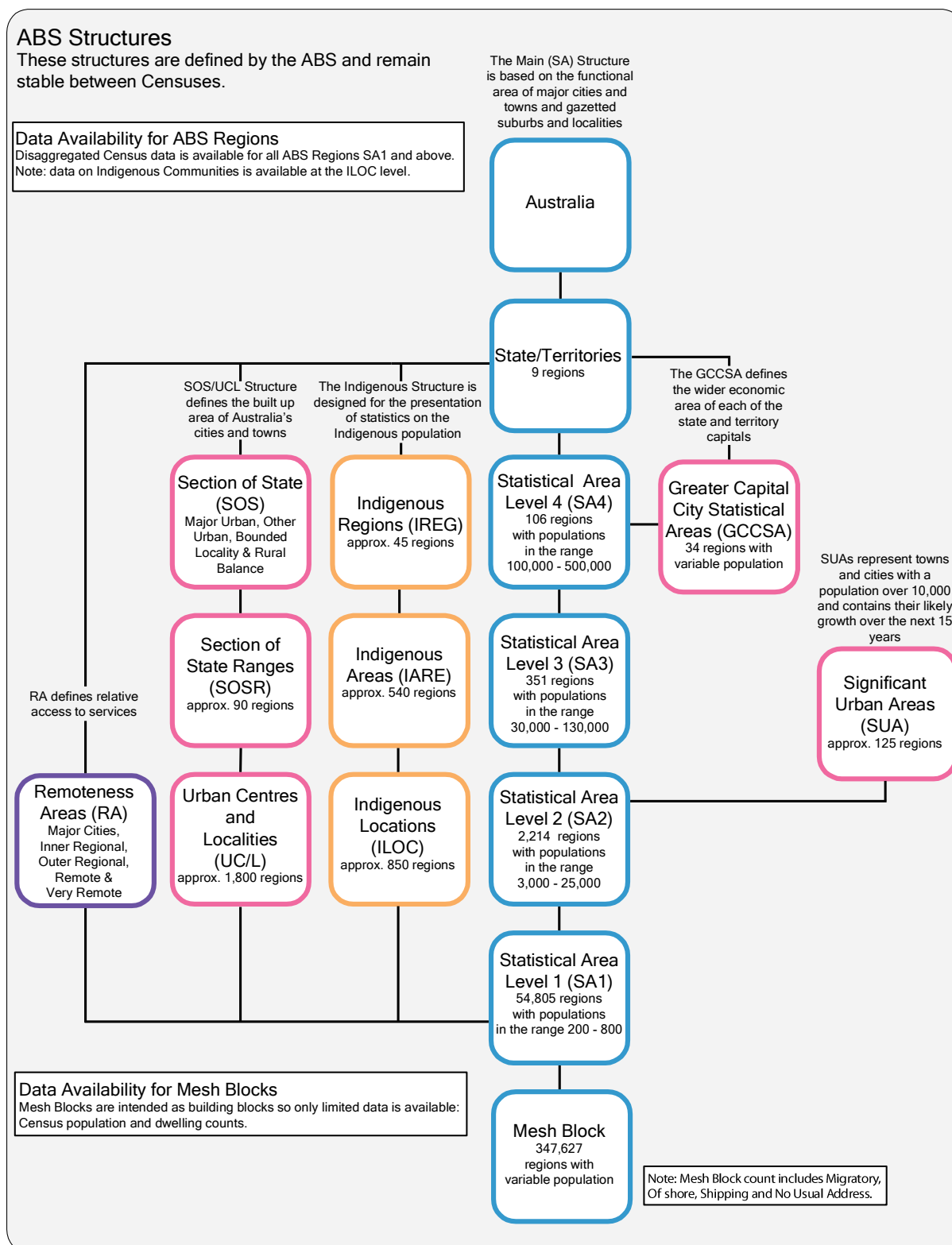
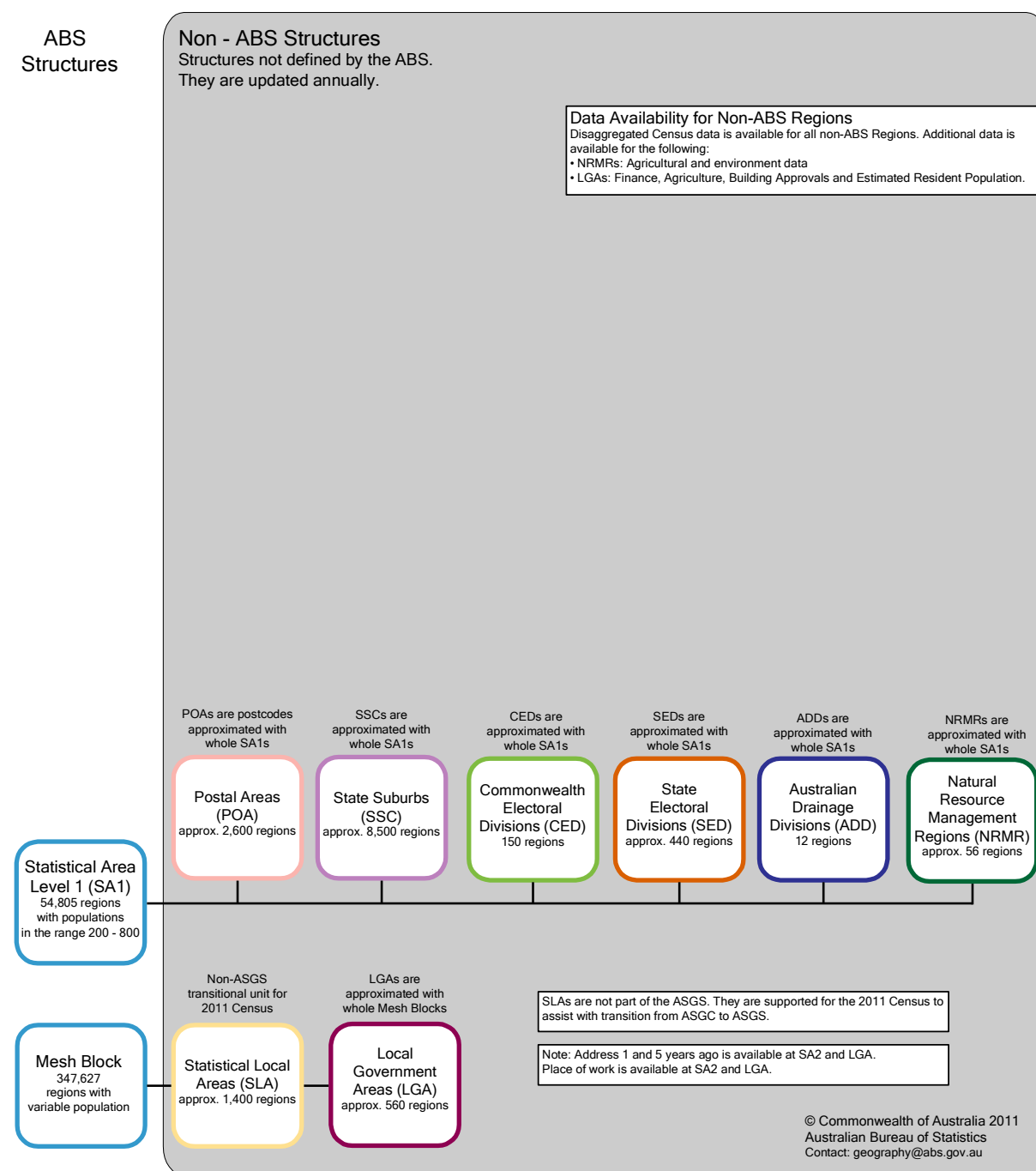


DIAGRAM 2: ASGS NON-ABS STRUCTURES FOR CENSUS



## APPENDIXES: PRODUCTS AND SERVICES, 2011 (cat. no. 2011.0.55.001)

### APPENDIX 12: 2011 CENSUS PRODUCTS AND SERVICES RELEASE SCHEDULE – by Date

Release Date	Product
<b>30 April 2012</b>	<b>TableBuilder Pro Registration Available</b> Shell 2011 Census databases available online  <b>DataPacks – Download Shell (Australia)</b> Basic Community Profile Aboriginal and Torres Strait Islander peoples (Indigenous) Profile Time Series Profile  <b>Community Profiles Shell (Australia)</b> Basic Community Profile Aboriginal and Torres Strait Islander peoples (Indigenous) Profile Time Series Profile
FIRST RELEASE DATA	
<b>21 June 2012</b>	<b>QuickStats</b>  <b>Community Profiles</b> Basic Community Profile Aboriginal and Torres Strait Islander peoples (Indigenous) Profile Time Series Profile  <b>DataPacks – DVD</b> Basic Community Profile Aboriginal and Torres Strait Islander peoples (Indigenous) Profile Time Series Profile  <b>Census Analytical Articles (progressively released)</b>  <b>Census Data Quality Reports (progressively released)</b>
<b>10 July 2012</b>	<b>DataPacks – Download</b> Basic Community Profile Aboriginal and Torres Strait Islander peoples (Indigenous) Profile Time Series Profile
<b>7 August 2012</b>	<b>TableBuilder Pro</b>
<b>21 August 2012</b>	<b>Community Profiles</b> Place of Enumeration Profile Expanded Profile  <b>Data Packs – DVD</b> Place of Enumeration Profile Expanded Profile  <b>TableBuilder Basic</b>
<b>3 September 2012</b>	<b>Data Packs – Download</b> Place of Enumeration Profile Expanded Profile
SECOND RELEASE DATA	
<b>30 October 2012</b>	<b>QuickStats</b>  <b>Community Profiles</b> Basic Community Profile Aboriginal and Torres Strait Islander peoples (Indigenous) Profile Time Series Profile  <b>DataPacks – DVD</b> Basic Community Profile Aboriginal and Torres Strait Islander peoples (Indigenous) Profile Time Series Profile

## APPENDIXES: PRODUCTS AND SERVICES, 2011 (cat. no. 2011.0.55.001)

---

20 November 2012

**Census Analytical Articles (progressive release continues)**

**Census Data Quality Reports (progressive release continues)**

**DataPacks – Download**

Basic Community Profile  
Aboriginal and Torres Strait Islander peoples (Indigenous) Profile  
Time Series Profile

**Community Profiles**

Place of Enumeration Profile  
Expanded Profile  
Working Population Profile

**Data Packs – DVD**

Place of Enumeration Profile  
Expanded Profile  
Working Population Profile

**TableBuilder Pro**

**TableBuilder Basic**

**Data Packs – Download**

Place of Enumeration Profile  
Expanded Profile  
Working Population Profile

**Mesh Block Counts**

---

### THIRD RELEASE DATA

---

28 March 2013

**Socio-Economic Indexes for Areas (SEIFA)**

**QuickStats**

**Community Profiles**

Basic Community Profile  
Aboriginal and Torres Strait Islander peoples (Indigenous) Profile  
Place of Enumeration Profile

**DataPacks – Download**

Basic Community Profile  
Aboriginal and Torres Strait Islander peoples (Indigenous) Profile  
Place of Enumeration Profile

**DataPacks – DVD**

Basic Community Profile  
Aboriginal and Torres Strait Islander peoples (Indigenous) Profile  
Place of Enumeration Profile

**TableBuilder Pro**

**TableBuilder Basic**

25 September 2013

**DataPacks – Download**

Estimated Resident Population

**DataPacks – DVD**

Estimated Resident Population

2013

**Census Sample File**

1% Basic Sample  
5% Expanded Sample

December 2013

**5% Statistical Longitudinal Census Dataset (SLCD)**

---

## APPENDIXES

### APPENDIX 13: 2011 CENSUS PRODUCTS AND SERVICES RELEASE SCHEDULE – by Product

Product		Shell Release Date	First Release Date	Second Release Date	Third Release Date
Census Sample File	1% Basic Sample	n/a	n/a	n/a	2013
	5% Expanded Sample	n/a	n/a	n/a	2013
Community Profiles	Basic Community Profile	30 April 2012	21 June 2012	30 October 2012	28 March 2013
	Aboriginal and Torres Strait Islander peoples (Indigenous) Profile	30 April 2012	21 June 2012	30 October 2012	28 March 2013
	Time Series Profile	30 April 2012	21 June 2012	30 October 2012	n/a
	Place of Enumeration Profile	n/a	21 August 2012	20 November 2012	28 March 2013
	Expanded Profile	n/a	21 August 2012	20 November 2012	n/a
	Working Population Profile	n/a	n/a	20 November 2012	n/a
DataPack – Downloads	Basic Community Profile	30 April 2012	10 July 2012	20 November 2012	28 March 2013
	Aboriginal and Torres Strait Islander peoples (Indigenous) Profile	30 April 2012	10 July 2012	20 November 2012	28 March 2013
	Time Series Profile	30 April 2012	10 July 2012	20 November 2012	n/a
	Place of Enumeration Profile	n/a	3 September 2012	27 November 2012	28 March 2013
	Expanded Profile	n/a	3 September 2012	27 November 2012	n/a
	Working Population Profile	n/a	n/a	27 November 2012	n/a
	Estimated Resident Population	n/a	n/a	n/a	25 September 2013
DataPack – DVD	Basic Community Profile	n/a	21 June 2012	30 October 2012	28 March 2013
	Aboriginal and Torres Strait Islander peoples (Indigenous) Profile	n/a	21 June 2012	30 October 2012	28 March 2013
	Time Series Profile	n/a	21 June 2012	30 October 2012	n/a
	Place of Enumeration Profile	n/a	21 August 2012	20 November 2012	28 March 2013
	Expanded Profile	n/a	21 August 2012	20 November 2012	n/a
	Working Population Profile	n/a	n/a	20 November 2012	n/a
	Estimated Resident Population	n/a	n/a	n/a	25 September 2013
Mesh Block Counts		n/a	n/a	11 December 2012	n/a
QuickStats		n/a	21 June 2012	30 October 2012	28 March 2013
Socio-Economic Indexes for Area (SEIFA)		n/a	n/a	n/a	28 March 2013
TableBuilder Basic		n/a	21 August 2012	20 November 2012	28 March 2013
TableBuilder Pro		30 April 2012	7 August 2012	20 November 2012	28 March 2013
5% Statistical Longitudinal Census Dataset (SLCD)		n/a	n/a	n/a	December 2013