

AGRICULTURE

TASMANIA

EMBARGO: 11:30AM (CANBERRA TIME) THUR 30 JUL 1998

**Final
Issue**

CONTENTS

Notes	2
Summary of findings	3
List of tables	19
Structure of agricultural industry	21
Land management.	28
Crops and pastures.....	31
Horticulture	38
Livestock and livestock products	48
Farm finances	60
Explanatory Notes.....	65

INQUIRIES

- For more information about these and related statistics, contact Nigel Gibson on [03] 6222 5939 or refer to the back cover of this publication.

NOTES

SYMBOLS AND OTHER USAGES

EVAO	estimated value of agricultural operations
ha	hectares
kg	kilograms
km	kilometres
\$m	million dollars
n.c.	not collected
n.p.	not published
no.	number
p	preliminary
r	revised
SE%	percentage standard error
t	tonnes
*	SE% greater than 100. Estimate included for completeness. Sampling variability too high for most practical purposes.
**	Where an estimate is small compared to previous years, the relative standard error may be a misleading indicator of the reliability of the estimate.
—	nil or rounded to zero

INQUIRIES

For further information about statistics in this publication and the availability of related unpublished statistics, contact Nigel Gibson on Hobart (03) 6222 5939 or any ABS State office.

For information about other ABS statistics and services, please refer to the back of this publication.

Denis W. Rogers
Regional Director, Tasmania

SUMMARY OF FINDINGS

STRUCTURE OF AGRICULTURAL INDUSTRY

There were 4,536 establishments with agricultural activity with an estimated value of agricultural operations (EVAO) of \$5,000 or more at 31 March 1997. This was 2.2% lower than the estimated number at 31 March 1996. Of these establishments, 2,042 (45.0%) had an EVAO of less than \$50,000.

There were significant numbers of establishments with agricultural activity in all Statistical Divisions, with 1,785 in the Mersey-Lyell Statistical Division (SD), 1,605 in the Northern SD and 1,146 in the Greater Hobart and Southern SDs.

The industry with the largest number of establishments was beef cattle farming (1,106 or 24.4%). Both the number and proportion of such establishments were down slightly from the previous year (1,169 or 25.2%).

The main industries of the agricultural establishments were:

	<i>Number</i>	<i>% of establishments with agricultural activity</i>
Beef cattle farming	1 106	24.4
Dairy cattle farming	773	17.0
Sheep farming	673	14.8
Vegetable growing	627	13.8

The majority of beef cattle establishments (637 or 57.6%) had an EVAO of less than \$22,500. There were 542 dairy farms, representing 70.1% of dairy establishments, with an EVAO greater than \$100,000. At the other end of the scale a total of 213 farm establishments (4.7%) had an EVAO of \$500,000 or more, and most were in the vegetable growing industry (74 or 34.7%).

In area terms, 10 establishments had 10,000 ha or more, and a further 36 were in the range of 5,000 to 9,999 hectares. Just under 1,000 establishments had areas of less than 50 hectares.

SUMMARY OF FINDINGS *continued*

LAND MANAGEMENT

The total area of agricultural establishments at 31 March 1997 was 1,920,000 hectares; this was 28.0% of the total area of the State (see table 7).

During 1996-97, there were 734,000 seedlings planted for timber/pulp on 545 ha of farming land. This was an increase of 66,000 seedlings on 1995-96. A further 251,000 seedlings were planted on 513 ha for other purposes, such as windbreaks, shelter belts, control of land degradation, etc. (see table 8).

In 1996-97, farmers constructed 369 kilometres (km) of fences to protect creeks and river banks, a decrease of 248 km on 1995-96. A further 486 km of fences was erected for protection of remnant native vegetation (down from 603 km in 1995-96) and 425 km for protection of planted trees and shrubs (up from 374 km in 1995-96) (see table 9).

In 1996-97, 51,738 ha of agricultural land was irrigated. This was an increase of 6,334 ha, or 14.0%, on 1995-96 (see table 10).

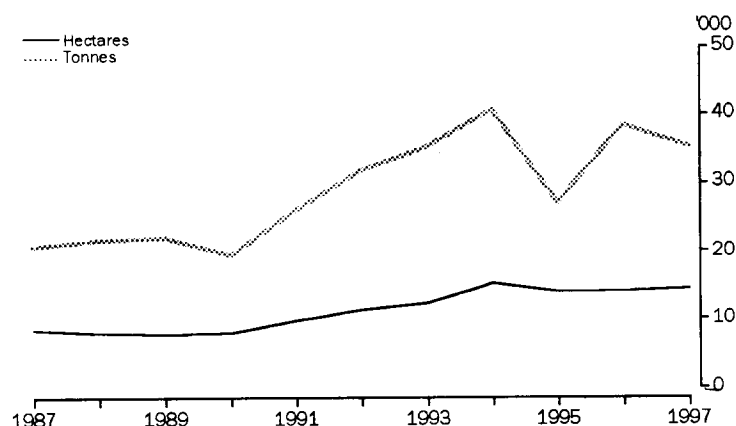
SUMMARY OF FINDINGS *continued*

CROPS AND PASTURES

BARLEY

The main broadacre crop grown in Tasmania is barley. In 1996–97, the area sown to barley was 14,502 ha for a crop of 35,237 tonnes. The area sown was up 483 ha (3.4%) on 1995–96, but production was down by 8.4%. The average yield in 1996–97 was 2.4 t/ha compared to 2.7 t/ha in 1995–96. The majority of growers (415 or 84.3%) planted less than 50 ha (see tables 11 and 17).

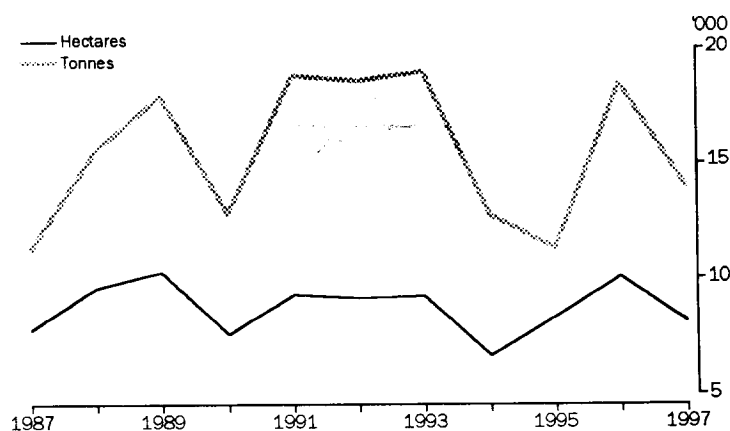
BARLEY, YEARS ENDED 31 MARCH



OATS

In area terms, the next most significant cereal grain crop in Tasmania is oats; 8,111 ha was sown in 1996–97 for a crop of 13,983 tonnes. In keeping with recent trends, both sowings and production continued to fluctuate, with the area sown decreasing by 19.4% from the 1995–96 figure, and production down by 24.2% (see table 11). The decrease in area sown can largely be attributed to improved growing conditions and farmers planting greater areas of higher value crops such as wheat and barley.

OATS, YEARS ENDED 31 MARCH

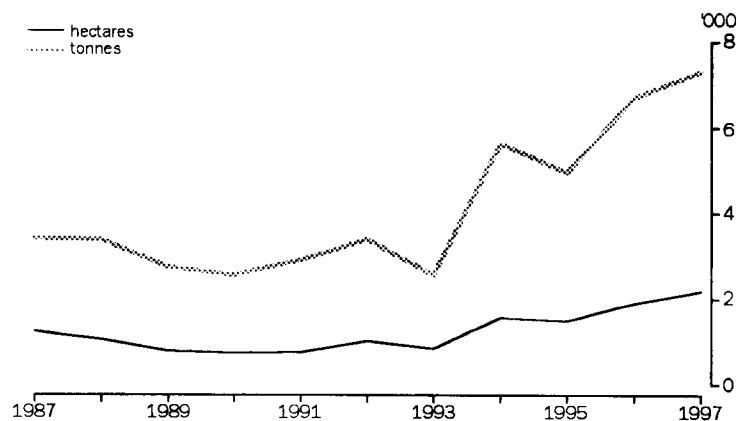


SUMMARY OF FINDINGS *continued*

TRITICALE

The area of triticale sown continued to rise, from 1,894 ha in 1995–96 to 2,176 ha in 1996–97, an increase of 14.9%. Production increased 9% from 6,693 tonnes to 7,296 tonnes (see table 11).

TRITICALE, YEARS ENDED 31 MARCH



OIL POPPIES

The area of oil poppies sown in 1996–97 was 8,364 ha, up by 12.5% on the previous year (see table 14).

OIL POPPIES, YEARS ENDED 31 MARCH

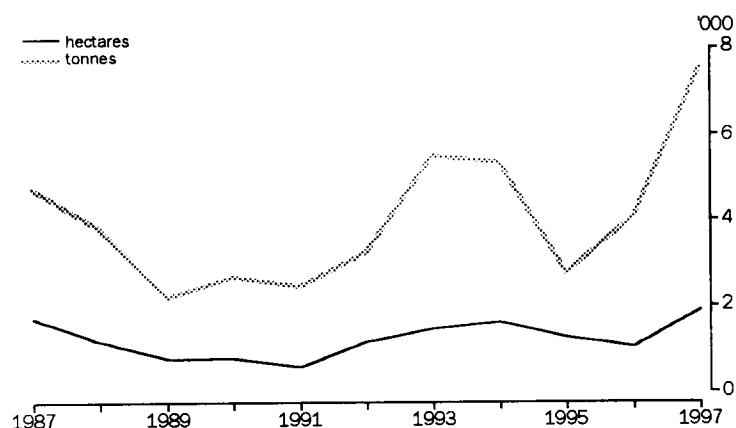


SUMMARY OF FINDINGS *continued*

WHEAT

The number of establishments growing wheat increased from 86 in 1995-96 to 111 in 1996-97, and the area of wheat sown in 1996-97 increased by 846 ha or 80.1% to 1900 ha (see tables 11 and 18). The majority of the wheat crop (70.1%) was grown in the Northern SD. Production rose by 3,481 tonnes (85.6%) to 7,549 tonnes.

WHEAT, YEARS ENDED 31 MARCH



SUMMARY OF FINDINGS *continued*

HORTICULTURE

APPLES

Apart from a slight fall in 1993–1994, the number of apple trees has consistently increased each year since 1987. At 31 March 1997, there were 1,676,000 apple trees comprising 573,500 trees under six years and 1,102,500 trees six years and over. The total number of apple trees increased by 1.6% between 31 March 1996 and 31 March 1997.

Apple production in 1996–97 was 55,649 tonnes, an increase of 6.2% on 1995–96 production. Average yield per tree in the Greater Hobart and Southern SDs, Tasmania's major apple growing centre, was 49.5kg/tree in 1996–97 compared with a 1995–96 average of 46.9 kg/tree. Production in the Greater Hobart and Southern SDs increased from 41,032 tonnes in 1995–96 to 42,829 tonnes in 1996–97 (see table 19).

Greater Hobart and Southern SDs accounted for 77.0% of the State's apple production in 1996–97. Production in both the Northern and Mersey-Lyell SDs increased from 1995–96 to 1996–97.

APPLE PRODUCTION, YEARS ENDED 31 MARCH

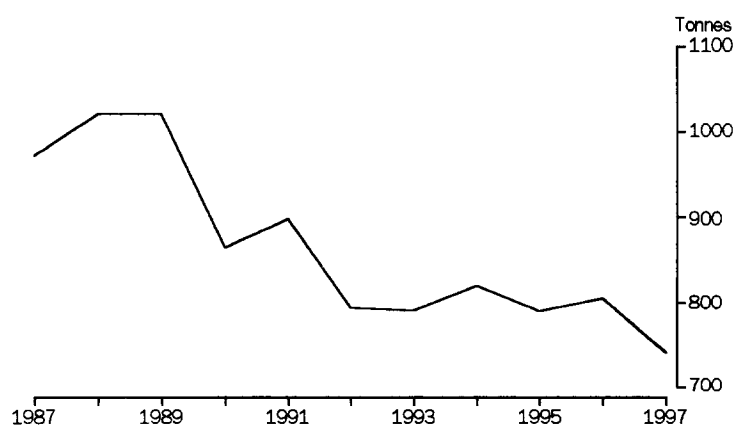


SUMMARY OF FINDINGS *continued*

PEARS

The total number of pear trees (excluding nashi) at 31 March 1997 was 19,400, a decrease of 7.1% over the previous year. Production in 1996-97 was down by 7.8% to 742 tonnes (see table 19).

PEAR PRODUCTION, YEARS ENDED 31 MARCH

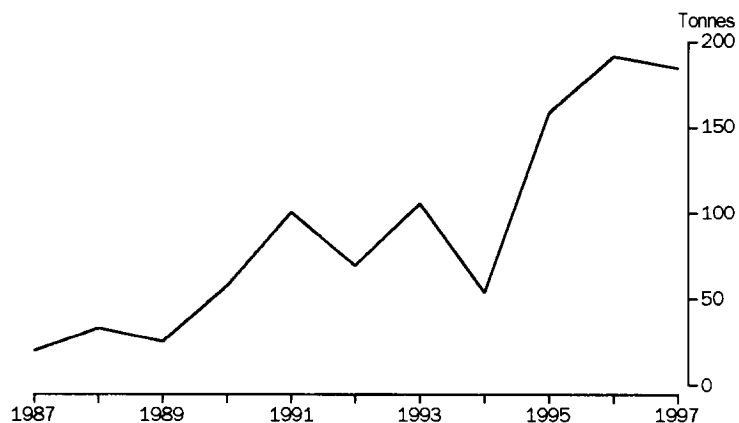


SUMMARY OF FINDINGS *continued*

CHERRIES

The total number of cherry trees at 31 March 1997 was 125,300; this was 25.9% above the number at 31 March 1996. The number of trees under six years increased by 25,300 or 40.6%, indicating significant new plantings. Production was slightly lower at 185 tonnes, down 3.5% (see table 20).

CHERRY PRODUCTION, YEARS ENDED 31 MARCH

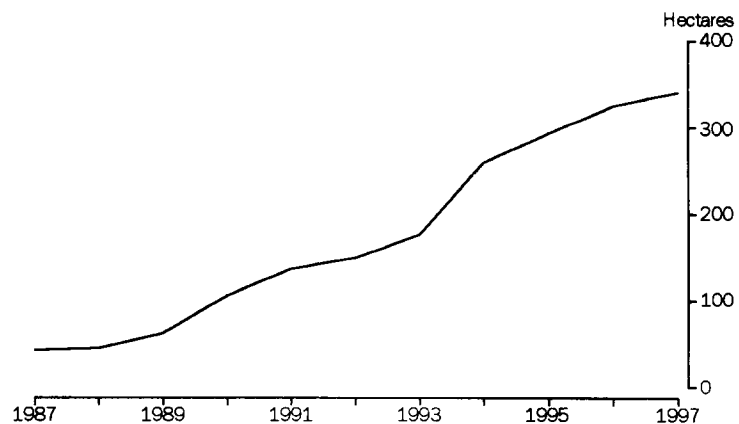


GRAPES

The grape harvest for 1996-97, of 1,500 tonnes, was down by 490 tonnes (24.7%) on the 1995-96 harvest (see table 23).

The total area under vines increased slightly from 475 ha at 31 March 1996 to 484 ha. More than half of the area under vines (62.9%) was in the Northern SD. The area of bearing vines in Tasmania was 5.1% higher than at 31 March 1996.

GRAPES, BEARING AREA, YEARS ENDED 31 MARCH



SUMMARY OF FINDINGS *continued*

VEGETABLES

In value terms, the four main vegetable crops in Tasmania are potatoes, onions, green peas and carrots. The Mersey-Lyell SD is the main vegetable cropping region.

The median area of establishments classified to vegetable growing was 151 ha.

POTATOES

During 1996-97, the area of potatoes planted in Tasmania was 7,436 ha, yielding a crop of 317,400 tonnes. Whilst the area sown fell slightly in 1996-97 by 1.7%, production increased by 15,400 tonnes (5.1%) on 1995-96 (see table 24).

POTATOES, AREA, YEARS ENDED 31 MARCH



POTATOES, PRODUCTION, YEARS ENDED 31 MARCH

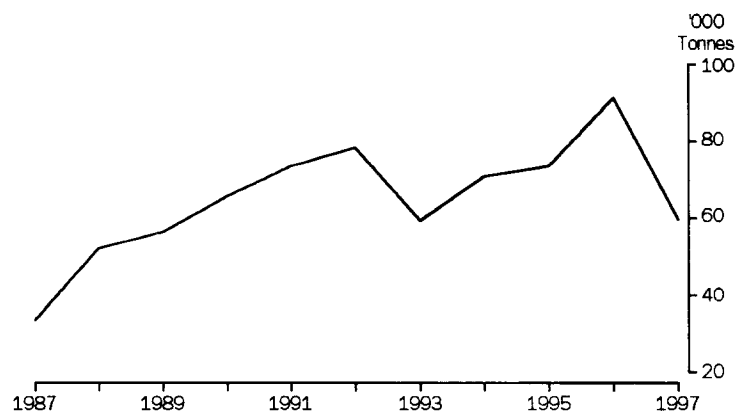


SUMMARY OF FINDINGS *continued*

ONIONS

Sowings of onions were down significantly in 1996–97 reflecting lower returns and disease problems. Plantings in 1996–97 totalled 1,192 ha, a reduction of 440 ha or 27.0%. As a result of the reduction in area planted production was also lower, down by 31,400 tonnes (34.5%) (see table 24).

ONIONS, PRODUCTION, YEARS ENDED 31 MARCH



GREEN PEAS

Green peas (processing and fresh market) increased slightly in area (3.7%) and production (9.2%) (see table 24). During 1996–97 6,333 ha of peas were planted for a total production of 71,700 tonnes.

GREEN PEAS, PRODUCTION, YEARS ENDED 31 MARCH



SUMMARY OF FINDINGS *continued*

LIVESTOCK AND LIVESTOCK PRODUCTS

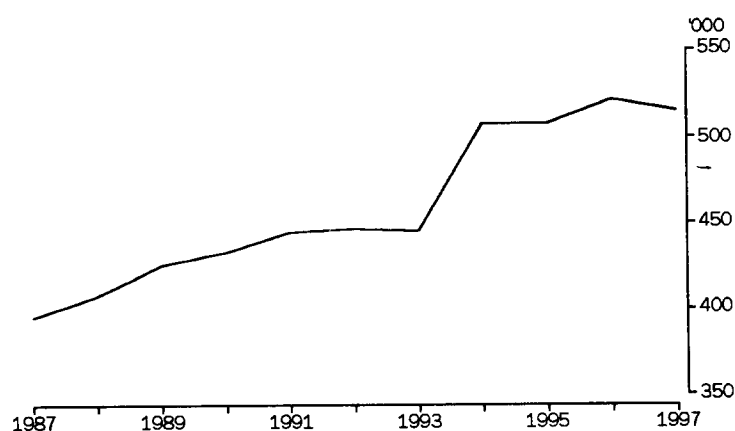
MEAT CATTLE

The meat cattle herd at 31 March 1997 was 515,000, down 1.2% on the previous year. There was a corresponding drop of 2.1% in the number of establishments with meat cattle, down from 3,244 at 31 March 1996 to 3,175 at 31 March 1997. Significantly, 70.0% of all agricultural establishments in Tasmania carry some meat cattle.

The majority of the meat cattle herd were in the Northern SD (41.4%) and the Mersey-Lyell SD (41.3%). The median meat cattle herd size at 31 March 1997 was 79 (see tables 28, 29 & 30).

The median area of establishments classified to beef cattle farming was 118 ha.

MEAT CATTLE, AT 31 MARCH



SUMMARY OF FINDINGS *continued*

MILK CATTLE

The milk cattle herd showed continued growth between 31 March 1996 and 31 March 1997. At 31 March 1997, the total number of milk cattle was 211,000, an increase of 7.1% on the previous year. Most of this growth occurred in the Mersey-Lyell SD where the herd increased by 7.3% to account for 60.0% of the State's milk cattle herd.

At 31 March 1997, there were 944 establishments with milk cattle herds; 62 of these establishments (6.6%) had herds of 500 or more and accounted for 28.0% of the total milk cattle. The median milk cattle herd in 1997 was 173 (see tables 31, 32 and 33).

The median area of establishments classified to dairy farming was 228 ha.

MILK CATTLE, AT 31 MARCH



SUMMARY OF FINDINGS *continued*

SHEEP AND LAMBS

A total of 1,949 establishments had sheep and lambs at 31 March 1997. The total flock size was 3,976,600, a rise of 3.0% above the previous year. The Northern SD had 50.7% of the State's total flock and Greater Hobart and Southern SDs accounted for a further 44.8%.

The median flock size at 31 March 1997 was 637.

Sales of sheep and lambs declined by 99,000 (8.5%) to 1,064,000 in 1996-97.

The lamb marking ratio continued to improve in 1996-97, recording 88.9% after reaching a level of 86.0% the previous year. Total lambs marked during 1996-97 was 1,316,200, an increase of 4.7% on the 1995-96 total (see tables 34, 35, 36 and 37).

The median area of establishments classified to sheep farming was 494 ha.

SHEEP AND LAMBS, AT 31 MARCH



SUMMARY OF FINDINGS *continued*

PIGS

Pig numbers continued their decline over recent years, with 23,900 at 31 March 1997. This compares with 45,500 at 31 March 1994. Most of the pig herd (72.6%) was located in the Northern SD.

Pig sales dropped from 53,200 for the year ended 31 March 1996 to 45,000 for the year ended 31 March 1997.

There were six (5.6%) establishments with pig herds of 1,000 and over. These accounted for 54.4% of the total pigs (see tables 38 and 39).

PIGS, AT 31 MARCH



LIVESTOCK SLAUGHTERINGS

AND PRODUCTS

The number of cattle and calves slaughtered has increased steadily over the past few years. The number increased by 5.0% between 1995–96 and 1996–97 and 4.4% in the previous year. On the contrary, lamb and pig slaughterings have fallen significantly over the corresponding period.

The number of lambs slaughtered in 1996–97 was down 16.0% on 1995–96 (down 9.5% the previous year) and pig slaughterings were down 12.9% (8.5% the previous year).

Whole milk intake by factories has increased steadily over the past couple of years. Factory intake was 529 million litres in 1996–97, an increase of 9.1% over the previous year. This followed a similar increase in 1995–96 (up 8.7% on the previous year).

SUMMARY OF FINDINGS *continued*

VALUE OF AGRICULTURAL COMMODITIES PRODUCED

The total value of cereal crops decreased by \$3.5m (23.3%) to \$11.5m in the year ended 31 March 1997. Barley was the leading cereal crop in terms of value of production (\$6.6m), followed by oats (\$2.2m). Barley accounted for 57.4% of the total value of cereal crops for grain (see table 16).

Apples were the dominant individual fruit in value terms at \$54.2m (an increase of \$7.5m or 16.1% on 1995-96), followed by grapes with a value of production of \$3.0m. Apples contributed 86.0% of the total value of fruit production of \$63.0m (see table 22).

The gross value of vegetables for the year ended 31 March 1997 increased by \$19.0m (14.0%) to \$155.1m. Potatoes continued to be the most valuable vegetable crop, contributing \$84.8m (54.7%) to the total vegetable value. This was an increase of \$18.0m (26.9%) on the previous year (see table 26).

The gross value of livestock slaughterings increased from \$105.3m in 1995-96 to \$117.1m in 1996-97, a rise of 11.2%. Gross value of cattle and calf slaughterings rose by 7.7% to \$75.1m, while the gross value of sheep and lamb slaughterings rose by 24.3% to \$18.9m (see table 44).

The gross value of wool produced for 1996-97 was \$82.1m, representing an increase of 20.9% from the previous year's figure (\$67.9m). The value of milk production decreased by 4.9% to \$132.6m (see table 44).

SELECTED FINANCIAL STATISTICS

Turnover of farm businesses in Tasmania decreased by 9.3% from \$693.4m in 1995-96 to \$628.9m in 1996-97. The average turnover per farm business was \$199,000 in 1996-97 compared to \$221,800 in 1995-96, a drop of 10.3%.

Total farm debt for Tasmanian farm businesses increased from \$533.8m in 1995-96 to \$560.4m in 1996-97. Average gross indebtedness per farm business was \$177,300 at 30 June 1997, compared with \$170,800 for the same period in 1996, an increase of 3.8%.

Interest paid by all farm businesses increased slightly from \$49.0m in 1995-96 to \$49.4m in 1996-97. However the average interest bill dropped marginally from \$15,700 to \$15,600.

The aggregate cash operating surplus for 1996-97 was \$103.6m, down by 5.5% on the figure of \$109.6m for 1995-96. The average cash operating surplus for each farm business also dropped in 1996-97, by 6.6% to \$32,800 (see tables 46 and 47).

LIST OF TABLES

Page

Structure of agricultural industry

1	Establishments by industry, EVAO \$5,000 and over, at 31 March	21
2	Establishments by industry, EVAO \$22,500 and over, at 31 March	22
3	Establishments with agricultural activity, Statistical Divisions, EVAO \$5,000 & over	23
4	Establishments with agricultural activity, Statistical Divisions, EVAO \$22,500 & over	23
5	Establishments by industry, by EVAO range, at 31 March 1997	24
6	Establishments by industry, by area range, at 31 March 1997	26

Land management

7	Area and land use of establishments with agricultural activity, at 31 March 1997	28
8	Planting of trees, year ended 31 March 1997	29
9	Fencing, year ended 31 March 1997	30
10	Irrigation, year ended 31 March 1997	30

Crops and pastures

11	Cereals for grain, year ended 31 March 1997	31
12	Legumes for grain, year ended 31 March 1997	31
13	Cereals and pastures for hay, year ended 31 March 1997	32
14	Oilseeds, year ended 31 March 1997	33
15	Other crops, year ended 31 March 1997	34
16	Gross value of principal crops and pastures, years ended 31 March	35
17	Establishments by area of principal grains sown and production	36
18	Establishments growing cereals for grain, year ended 31 March 1997	37

Horticulture

19	Pome fruit, year ended 31 March 1997	38
20	Stone fruit, year ended 31 March 1997	39
21	Berry fruit, year ended 31 March 1997	40
22	Gross value of pome and other fruit, years ended 31 March	41
23	Grapes, year ended 31 March 1997	41
24	Vegetables for human consumption, years ended 31 March	42
25	Vegetables for human consumption, Statistical Divisions, year ended 31 March 1997	44
26	Gross value of vegetables for human consumption, years ended 31 March ..	46
27	Area of nurseries and cut flowers, year ended 31 March 1997	47

[illegible]

✱ ✱ ✱ ✱ ✱ ✱ ✱ ✱ ✱ ✱ ✱ ✱ ✱ ✱ ✱ ✱

Page

Livestock and livestock products

28	Meat cattle numbers, at 31 March 1997	48
29	Establishments with meat cattle, at 31 March 1997	48
30	Number of establishments and meat cattle by herd size, at 31 March	49
31	Milk cattle numbers, at 31 March 1997	50
32	Establishments with milk cattle, at 31 March 1997	50
33	Number of establishments and milk cattle by herd size, at 31 March	51
34	Number of sheep and lambs, at 31 March 1997	52
35	Establishments with sheep and lambs, at 31 March 1997	52
36	Number of establishments and sheep and lambs by flock size, at 31 March ..	53
37	Lambing, year ended 31 March 1997	54
38	Pig numbers and number of establishments, at 31 March 1997	54
39	Number of establishments and pigs by herd size, at 31 March	55
40	Poultry	56
41	Number of other livestock, at 31 March 1997	56
42	Sales of livestock, year ended 31 March 1997	57
43	Livestock slaughterings and products, years ended 31 March	58
44	Gross value of livestock products and other disposals, years ended 31 March	59
45	Beekeeping, summary statistics, years ended 30 June	59

Farm finances

46	Selected financial statistics, farm businesses, by industry, aggregates	60
47	Selected financial statistics, farm businesses, aggregates	63
48	Selected financial statistics, farm businesses, averages	64

ESTABLISHMENTS BY INDUSTRY, EVAO \$5,000 and over, at 31 March (a)

Industry class		1995	1996	1997
ANZSIC code	Industry of establishment	no.	no.	no.
0111	Plant nurseries	36	38	43
0112	Cut flower and flower seed growing	56	46	48
0113	Vegetable growing	589	615	627
0114	Grape growing	58	68	72
0115	Apple and pear growing	165	167	164
0116	Stonefruit growing	20	23	23
0119	Fruit growing n.e.c.	37	35	38
0121	Grain growing	16	22	20
0122	Grain-sheep/beef cattle farming	75	102	94
0123	Sheep-beef cattle farming	461	443	438
0124	Sheep farming	624	635	673
0125	Beef cattle farming	1 190	1 169	1 106
0130	Dairy cattle farming	779	791	773
0141	Poultry farming (meat)	14	15	14
0142	Poultry farming (eggs)	14	14	14
0151	Pig farming	40	35	35
0152	Horse farming	41	44	55
0153	Deer farming	32	38	20
0159	Livestock farming n.e.c.	75	87	54
0169	Crop and plant growing n.e.c.	73	77	73
Total (ANZSIC Code 01)		4 395	4 464	4 384
02	Services to agriculture; hunting and trapping	8	11	11
03	Forestry and logging	13	14	16
04	Commercial fishing	6	7	5
Total (ANZSIC Division A)		4 422	4 496	4 416
All other ANZSIC Divisions		91	93	84
Unclassified		41	51	36
Total all industries		4 554	4 640	4 536

(a) Number of establishments with an EVAO of \$5,000 or more at the time of selection in the agricultural census. See explanatory note 4 on page 65.

ESTABLISHMENTS BY INDUSTRY, EVAO \$22,500 and over, at 31 March

Industry class		1995	1996	1997
ANZSIC code	Industry of establishment	no.	no.	no.
0111	Plant nurseries	35	33	38
0112	Cut flower and flower seed growing	44	35	34
0113	Vegetable growing	571	592	613
0114	Grape growing	31	39	30
0115	Apple and pear growing	157	156	154
0116	Stonefruit growing	15	11	18
0119	Fruit growing n.e.c.	24	24	24
0121	Grain growing	9	15	17
0122	Grain-sheep/beef cattle farming	47	70	65
0123	Sheep-beef cattle farming	322	309	292
0124	Sheep farming	452	469	519
0125	Beef cattle farming	666	583	469
0130	Dairy cattle farming	759	771	746
0141	Poultry farming (meat)	13	12	12
0142	Poultry farming (eggs)	14	13	14
0151	Pig farming	35	28	30
0152	Horse farming	21	26	32
0153	Deer farming	31	37	11
0159	Livestock farming n.e.c.	53	69	36
0169	Crop and plant growing n.e.c.	64	62	49
Total (ANZSIC Code 01)		3 363	3 354	3 203
02	Services to agriculture; hunting and trapping	3	5	7
03	Forestry and logging	8	10	9
04	Commercial fishing	6	7	4
Total (ANZSIC Division A)		3 380	3 376	3 223
All other ANZSIC Divisions		51	56	43
Unclassified		—	—	—
Total all industries		3 431	3 432	3 266

3

ESTABLISHMENTS WITH AGRICULTURAL ACTIVITY, Statistical Divisions, EVAO \$5,000 & over(a)(b)

	1995	1996	1997
<i>Statistical division</i>	no.	no.	no.
Greater Hobart and Southern	1 168	1 174	1 146
Northern	1 594	1 644	1 605
Mersey-Lyell	1 792	1 822	1 785
Tasmania	4 554	4 640	4 536

(a) See explanatory note 4 on page 65.

(b) Figures are at 31 March.

4

ESTABLISHMENTS WITH AGRICULTURAL ACTIVITY, Stat. Divisions, EVAO \$22,500 & over (a)

	1995	1996	1997
<i>Statistical division</i>	no.	no.	no.
Greater Hobart and Southern	798	802	773
Northern	1 246	1 258	1 203
Mersey-Lyell	1 387	1 372	1 290
Tasmania	3 431	3 432	3 266

(a) Figures are at 31 March.

ESTIMATED VALUE OF AGRICULTURAL OPERATIONS(\$).....

Industry class		Less than 5,000(a)	5,000 to 22,499	22,500 to 49,999	50,000 to 99,999
ANZSIC code	Industry of establishment	no.	no.	no.	no.
0111	Plant nurseries	—	5	8	10
0112	Cut flower and flower seed growing	—	14	13	10
0113	Vegetable growing	—	14	45	106
0114	Grape growing	8	34	12	12
0115	Apple and pear growing	—	10	22	29
0116	Stonefruit growing	—	5	7	7
0119	Fruit growing n.e.c.	2	12	11	6
0121	Grain growing	1	2	5	3
0122	Grain-sheep/beef cattle farming	1	28	24	16
0123	Sheep-beef cattle farming	5	141	94	69
0124	Sheep farming	15	139	134	117
0125	Beef cattle farming	87	550	252	122
0130	Dairy cattle farming	3	24	60	144
0141	Poultry farming (meat)	2	—	1	—
0142	Poultry farming (eggs)	—	—	—	—
0151	Pig farming	—	5	6	5
0152	Horse farming	3	20	14	16
0153	Deer farming	2	7	8	2
0159	Livestock farming n.e.c.	6	12	13	8
0169	Crop and plant growing n.e.c.	3	21	23	3
Total (ANZSIC Code 01)		138	1 043	752	685
02	Services to agriculture; hunting and trapping	—	4	4	3
03	Forestry and logging	3	4	3	3
04	Commercial fishing	—	1	1	1
Total (ANZSIC Division A)		141	1 052	760	692
All other ANZSIC Divisions		10	31	12	11
Unclassified		36	—	—	—
Total all Industries		187	1 083	772	703

(a) See explanatory note 4 on page 65.

ESTIMATED VALUE OF AGRICULTURAL OPERATIONS(\$)

Industry class		100,000 to 199,999	200,000 to 499,999	500,000 or more	Total establishments
ANZSIC code	Industry of establishment	no.	no.	no.	no.
0111	Plant nurseries	6	7	7	43
0112	Cut flower and flower seed growing	6	3	2	48
0113	Vegetable growing	176	212	74	627
0114	Grape growing	4	—	2	72
0115	Apple and pear growing	49	32	22	164
0116	Stonefruit growing	1	3	—	23
0119	Fruit growing n.e.c.	4	3	—	38
0121	Grain growing	6	3	—	20
0122	Grain-sheep/beef cattle farming	16	7	2	94
0123	Sheep-beef cattle farming	72	44	13	438
0124	Sheep farming	117	118	33	673
0125	Beef cattle farming	62	31	2	1 106
0130	Dairy cattle farming	298	218	26	773
0141	Poultry farming (meat)	5	4	2	14
0142	Poultry farming (eggs)	3	4	7	14
0151	Pig farming	9	7	3	35
0152	Horse farming	2	—	—	55
0153	Deer farming	—	1	—	20
0159	Livestock farming n.e.c.	7	5	3	54
0169	Crop and plant growing n.e.c.	5	5	13	73
Total (ANZSIC Code 01)		848	707	211	4 384
02	Services to agriculture; hunting and trapping	—	—	—	11
03	Forestry and logging	2	—	1	16
04	Commercial fishing	1	1	—	5
Total (ANZSIC Division A)		851	708	212	4 416
All other ANZSIC Divisions		12	7	1	84
Unclassified		—	—	—	36
Total all industries		863	715	213	4 536

ESTABLISHMENTS BY INDUSTRY, By area range, at 31 March 1997

AREA OF ESTABLISHMENTS(ha).....

Industry class		0 to 49	50 to 99	100 to 499	500 to 999	1,000 to 2,499
ANZSIC code	Industry of establishment	no.	no.	no.	no.	no.

0111	Plant nurseries	28	7	6	—	1
0112	Cut flower and flower seed growing	38	6	4	—	—
0113	Vegetable growing	131	144	304	32	12
0114	Grape growing	60	3	6	1	2
0115	Apple and pear growing	80	38	42	4	—
0116	Stonefruit growing	14	5	4	—	—
0119	Fruit growing n.e.c.	28	—	9	1	—
0121	Grain growing	2	4	11	3	—
0122	Grain-sheep/beef cattle farming	8	15	42	16	11
0123	Sheep-beef cattle farming	38	77	168	58	54
0124	Sheep farming	29	61	251	106	147
0125	Beef cattle farming	260	273	451	82	31
0130	Dairy cattle farming	73	153	503	33	7
0141	Poultry farming (meat)	7	2	3	2	—
0142	Poultry farming (eggs)	8	3	3	—	—
0151	Pig farming	14	10	9	1	1
0152	Horse farming	29	16	9	1	—
0153	Deer farming	5	10	3	1	1
0159	Livestock farming n.e.c.	46	4	4	—	—
0169	Crop and plant growing n.e.c.	22	22	21	3	3
—						
Total (ANZSIC Code 01)		920	853	1 853	344	270
02	Services to agriculture; hunting and trapping	6	3	1	1	—
03	Forestry and logging	1	3	10	—	2
04	Commercial fishing	—	1	1	—	3
Total (ANZSIC Division A)		927	860	1 865	345	275
All other ANZSIC Divisions		35	16	26	6	—
Unclassified		20	5	10	1	—
Total all industries		982	881	1 901	352	275

AREA OF ESTABLISHMENTS(ha).....

Industry class		AREA OF ESTABLISHMENTS(ha).....			
ANZSIC code		2,500 to 4,999	5,000 to 9,999	10,000 and over	Total establishments
	Industry of establishment	no.	no.	no.	no.
0111	Plant nurseries	—	1	—	43
0112	Cut flower and flower seed growing	—	—	—	48
0113	Vegetable growing	2	1	1	627
0114	Grape growing	—	—	—	72
0115	Apple and pear growing	—	—	—	164
0116	Stonefruit growing	—	—	—	23
0119	Fruit growing n.e.c.	—	—	—	38
0121	Grain growing	—	—	—	20
0122	Grain-sheep/beef cattle farming	1	—	1	94
0123	Sheep-beef cattle farming	30	10	3	438
0124	Sheep farming	55	21	3	673
0125	Beef cattle farming	6	2	1	1 106
0130	Dairy cattle farming	2	1	1	773
0141	Poultry farming (meat)	—	—	—	14
0142	Poultry farming (eggs)	—	—	—	14
0151	Pig farming	—	—	—	35
0152	Horse farming	—	—	—	55
0153	Deer farming	—	—	—	20
0159	Livestock farming n.e.c.	—	—	—	54
0169	Crop and plant growing n.e.c.	2	—	—	73
Total (ANZSIC Code 01)		98	36	10	4 384
02	Services to agriculture; hunting and trapping	—	—	—	11
03	Forestry and logging	—	—	—	16
04	Commercial fishing	—	—	—	5
Total (ANZSIC Division A)		98	36	10	4 416
All other ANZSIC Divisions		1	—	—	84
Unclassified		—	—	—	36
Total all industries		99	36	10	4 536

AREA & LAND USE OF ESTABLISHMENTS WITH AGRICULTURAL ACTIVITY, At 31 March 1997

	Area of cereal crops(a)	Area of other crops	Area of orchard trees	Area of vegetables
Statistical division	'000 ha	'000 ha	'000 ha	'000 ha
Greater Hobart and Southern	8.0	5.0	2.3	1.2
Northern	21.1	7.5	0.4	6.8
Mersey-Lyell	2.7	6.1	0.4	11.1
Tasmania				
1997	31.8	18.5	3.1	19.1
1996	30.3	22.2	3.2	19.8
1995	25.7	10.0	3.1	17.2

	Area of agricultural holdings	Area of non-agricultural land(b)	Total area (agricultural and non-agricultural land)
Statistical division	'000 ha	'000 ha	'000 ha
Greater Hobart and Southern	723.4	1 756.3	2 479.7
Northern	867.1	1 206.3	2 073.4
Mersey-Lyell	329.4	1 966.6	2 296.0
Tasmania			
1997	1 919.9	4 929.2	6 849.1
1996	1 948.8	4 900.3	6 849.1
1995	1 932.8	4 916.2	6 849.1

(a) Excludes pastures and grasses harvested for hay and seed.

(b) Comprises conserved land, forestry, urban and unused land such as vacant Crown land, commercially unused land on Aboriginal and other Crown reserves and waste land, ephemeral lakes, mangrove swamps, etc.

PLANTING OF TREES, Year ended 31 March 1997(a)

SEEDLINGS PLANTED

Statistical division	For timber/pulp.....		Other purposes.....	
	no.	ha	no.	ha
Greater Hobart and Southern	307 671	212.7	105 091	210.7
Northern	286 524	227.3	95 732	187.4
Mersey-Lyell	140 050	104.7	50 040	115.1
Tasmania				
1997	734 245	544.7	250 863	513.2
1996	667 789	560.0	113 342	244.0

SEED SOWN

TIMBER HARVESTED.....

Statistical division	kg	ha	Hardwood	Softwood
			t	t
Greater Hobart and Southern	50.5	26.2	75 895.1	—
Northern	126.0	13.6	136 230.5	18 487.0
Mersey-Lyell	240.0	11.7	10 753.0	645.0
Tasmania				
1997	416.5	51.5	222 878.6	19 132.0
1996	224.8	93.8	67 354.0	15 674.0

(a) Data in this table are an aggregation from responding establishments. No imputation has been made for non-responding establishments.

9

FENCING, Year ended 31 March 1997(a)

KILOMETRES ERECTED TO ISOLATE.....

	Saline areas	Other degraded areas	Creeks and rivers	Remnant native vegetation	Planted trees and shrubs
Statistical division	km	km	km	km	km
Greater Hobart and Southern	30.9	34.6	72.1	107.0	108.8
Northern	8.9	33.2	91.7	175.5	172.6
Mersey-Lyell	12.5	22.2	204.7	203.2	144.1
Tasmania					
1997	52.3	90.0	368.5	485.7	425.5
1996	40.2	72.5	618.0	603.3	373.9

(a) Data in this table are an aggregation from responding establishments. No imputation has been made for non-responding establishments.

10

IRRIGATION, Year ended 31 March 1997(a)

	Cereals	Fruit and nuts	Grapevines	Pastures	Vegetables	Other crops	Total
Statistical division	ha	ha	ha	ha	ha	ha	ha
Greater Hobart and Southern	350.9	1 790.9	114.5	5 826.2	829.3	1 851.3	10 763.1
Northern	1 648.2	245.7	64.1	11 194.7	5 693.6	2 587.7	21 434.0
Mersey-Lyell	217.5	382.2	10.0	7 765.5	8 802.6	2 362.9	19 540.7
Tasmania							
1997	2 216.6	2 418.8	188.6	24 786.4	15 325.5	6 801.9	51 737.8
1996	n.c.	n.c.	n.c.	n.c.	n.c.	n.c.	45 403.6

(a) Data in this table are an aggregation from responding establishments. No imputation has been made for non-responding establishments.

11

CEREALS FOR GRAIN, Year ended 31 March 1997

	BARLEY			OATS		
	Area	Production	Yield	Area	Production	Yield
Statistical division	ha	t	t/ha	ha	t	t/ha
Greater Hobart and Southern	3 477.8	8 569.5	2.5	2 023.8	3 400.3	1.7
Northern	9 823.0	22 999.0	2.3	5 943.1	10 310.3	1.7
Mersey-Lyell	1 201.4	3 668.0	3.1	144.3	271.9	1.9
Tasmania						
1997	14 502.2	35 236.5	2.4	8 111.2	13 982.5	1.7
1996	14 019.6	38 462.6	2.7	10 068.5	18 444.6	1.8
1995	13 968.7	27 072.8	1.9	8 315.7	11 286.9	1.4

	TRITICALE.....			WHEAT		
	Area	Production	Yield	Area	Production	Yield
Statistical division	ha	t	t/ha	ha	t	t/ha
Greater Hobart and Southern	152.1	430.6	2.8	419.5	1 202.0	2.9
Northern	1 781.4	5 689.4	3.2	1 332.6	5 402.9	4.1
Mersey-Lyell	242.8	1 176.1	4.8	148.1	943.9	6.4
Tasmania						
1997	2 176.3	7 296.1	3.4	1 900.2	7 548.8	4.0
1996	1 893.7	6 693.3	3.5	1 054.8	4 067.5	3.9
1995	1 488.3	4 942.5	3.3	1 261.6	2 768.8	2.2

12

LEGUMES FOR GRAIN, Year ended 31 March 1997

	FIELD PEAS			LUPINS		
	Area	Production	Yield	Area	Production	Yield
Statistical division	ha	t	t/ha	ha	t	t/ha
Greater Hobart and Southern	127.1	263.0	2.1	13.0	5.2	0.4
Northern	205.2	272.5	1.3	60.8	60.8	1.0
Mersey-Lyell	14.1	42.2	3.0	35.2	122.0	3.5
Tasmania						
1997	346.4	577.7	1.7	109.0	188.0	1.7
1996	453.3	805.0	1.8	254.7	290.5	1.1
1995	381.8	573.4	1.5	526.4	335.5	0.6

LUCERNE CUT FOR HAY.....

OTHER PASTURE CUT FOR HAY

Statistical division	Area ha	Production t	Yield t/ha	Area ha	Production t	Yield t/ha
Greater Hobart and Southern	1 084.0	4 970.4	4.6	7 606.6	25 583.6	3.4
Northern	1 322.9	6 274.8	4.7	22 260.2	87 160.9	3.9
Mersey-Lyell	225.2	1 215.6	5.4	19 257.1	91 071.7	4.7
Tasmania						
1997	2 632.1	12 460.8	4.7	49 123.9	203 816.2	4.1
1996	3 781.7	18 601.3	4.9	57 216.9	248 826.2	4.3
1995	2 880.4	11 348.6	3.9	45 970.0	172 130.3	3.7

TOTAL PASTURE CUT FOR HAY.....

CEREAL CROPS CUT FOR HAY.....

Statistical division	Area ha	Production t	Yield t/ha	Area ha	Production t	Yield t/ha
Greater Hobart and Southern	8 690.6	30 554.0	3.5	437.6	1 115.2	2.5
Northern	23 583.1	93 435.7	4.0	783.4	3 379.8	4.3
Mersey-Lyell	19 482.3	92 287.3	4.7	238.8	1 131.2	4.7
Tasmania						
1997	51 756.0	216 277.0	4.2	1 459.8	5 626.2	3.9
1996	60 998.6	267 427.5	4.4	2 520.7	10 487.0	4.2
1995	48 850.4	183 478.9	3.8	1 659.1	6 129.4	3.7

NON CEREAL CROPS CUT FOR HAY

TOTAL CROPS CUT FOR HAY.....

Statistical division	Area ha	Production t	Yield t/ha	Area ha	Production t	Yield t/ha
Greater Hobart and Southern	114.3	345.0	3.0	551.9	1 460.2	2.6
Northern	442.0	1 692.6	3.8	1 225.4	5 072.4	4.1
Mersey-Lyell	414.5	1 945.3	4.7	653.3	3 076.5	4.7
Tasmania						
1997	970.8	3 982.9	4.1	2 430.6	9 609.1	4.0
1996	886.0	3 672.2	4.1	3 406.7	14 159.2	4.2
1995	101.0	430.0	4.3	1 760.1	6 559.4	3.7

CANOLA

FENNEL

	Area	Production	Yield	Area	Production	Yield
Statistical division	ha	t	t/ha	ha	t	t/ha
Greater Hobart and Southern	27.3	31.1	1.1	22.0	1.5	0.1
Northern	—	—	—	37.4	4.0	0.1
Mersey-Lyell	—	—	—	—	—	—
Tasmania						
1997	27.3	31.1	1.1	59.4	5.5	0.1
1996	146.8	205.3	1.4	n.c.	n.c.	n.c.
1995	209.4	151.6	0.7	n.c.	n.c.	n.c.

OIL POPPIES

	Area	Production	Yield
Statistical division	ha	t	t/ha
Greater Hobart and Southern	1 690.1	n.p.	n.p.
Northern	3 460.4	n.p.	n.p.
Mersey-Lyell	3 213.0	n.p.	n.p.
Tasmania			
1997	8 363.5	n.p.	n.p.
1996	7 434.9	n.p.	n.p.
1995	7 764.4	n.p.	n.p.

	HOPS			PEPPERMINT		
	<i>Area</i>	<i>Production</i>	<i>Yield</i>	<i>Area</i>	<i>Production</i>	<i>Yield</i>
<i>Statistical division</i>	ha	t	t/ha	ha	t	t/ha
Greater Hobart and Southern	252.0	583.3	2.3	39.0	2.4	0.1
Northern	268.7	710.5	2.6	72.0	6.3	0.1
Mersey-Lyell	180.0	462.0	2.6	—	—	—
Tasmania						
1997	700.7	1 755.8	2.5	111.0	8.8	0.1
1996	717.5	1 930.2	2.7	138.0	6.9	0.1
1995	720.2	1 832.2	2.5	118.9	9.7	0.1

	1995	1996r	1997p
	\$m	\$m	\$m
Cereals for grain			
Barley	6.1	9.1	6.6
Oats	2.5	3.1	2.2
Triticale	1.1	1.5	1.3
Wheat	0.7	1.0	1.4
Other	0.3	0.3	—
Total	10.7	15.0	11.5
Lucerne cut for hay	2.7	3.9	3.0
Other pastures cut for hay	17.9	22.9	26.3
Cereal crops cut for hay	0.9	1.4	0.9
Other crops cut for hay	0.1	0.2	0.2
Legumes for grain			
Lupins	0.1	0.1	0.1
Field peas	0.2	0.2	0.1

AREA SOWN (HECTARES)

	0 to 49	50 to 99	100 to 149	150 to 199	200 to 299	300 to 399	Total establishments
Barley for grain							
establishments (number)	415	48	18	4	5	2	492
percentage of total establishments	84.3	9.8	3.7	0.8	1.0	0.4	100.0
area (hectares)	6 442	3 464	2 065	715	1 210	606	14 502
percentage of total barley area	44.4	23.9	14.2	4.9	8.3	4.2	100.0
production (tonnes)	16 212	7 349	4 630	2 075	3 019	1 951	35 236
percentage of total barley production	46.0	20.9	13.1	5.9	8.6	5.5	100.0
Oats for grain							
establishments (number)	359	27	5	2	4	—	397
percentage of total establishments	90.4	6.8	1.3	0.5	1.0	—	100.0
area (hectares)	4 649	1 763	500	329	870	—	8 111
percentage of total oats area	57.3	21.7	6.2	4.1	10.7	—	100.0
production (tonnes)	8 343	2 472	1 231	317	1 620	—	13 983
percentage of total oats production	59.7	17.7	8.8	2.3	11.6	—	100.0
Triticale for grain							
establishments (number)	96	5	2	1	—	—	104
percentage of total establishments	92.3	4.8	1.9	1.0	—	—	100.0
area (hectares)	1 511	281	235	150	—	—	2 176
percentage of total triticale area	69.4	12.9	10.8	6.9	—	—	100.0
production (tonnes)	5 114	1 082	950	150	—	—	7 296
percentage of total triticale production	70.1	14.8	13.0	2.1	—	—	100.0
Wheat for grain							
establishments (number)	100	9	1	1	—	—	111
percentage of total establishments	90.1	8.1	0.9	0.9	—	—	100.0
area (hectares)	1 116	525	100	160	—	—	1 900
percentage of total wheat area	58.7	27.6	5.3	8.4	—	—	100.0
production (tonnes)	4 253	2 316	380	600	—	—	7 549
percentage of total wheat production	56.3	30.7	5.0	7.9	—	—	100.0

(a) Year ended 31 March 1997.

	<i>Barley</i>	<i>Oats</i>	<i>Triticale</i>	<i>Wheat</i>
<i>Statistical division</i>	no.	no.	no.	no.
Greater Hobart and Southern	121	132	11	33
Northern	275	236	69	55
Mersey-Lyell	96	29	24	23
Tasmania				
1997	492	397	104	111
1996	504	501	81	86
1995	540	402	64	89

APPLES

NASHI

	<i>Trees under 6 years</i>	<i>Trees 6 years and over</i>	<i>Production</i>	<i>Yield</i>	<i>Trees under 6 years</i>	<i>Trees 6 years and over</i>	<i>Production</i>	<i>Yield</i>
<i>Statistical division</i>	no.	no.	t	kg/tree	no.	no.	t	kg/tree
Greater Hobart and Southern	362 684	865 192	42 829.4	49.5	160	316	4.0	12.6
Northern	91 855	102 383	4 694.7	45.9	90	2 160	13.4	6.2
Mersey-Lyell	118 958	134 961	8 124.8	60.2	31	120	3.9	32.5
Tasmania								
1997	573 497	1 102 536	55 648.9	50.5	281	2 596	21.2	8.2
1996	556 966	1 092 809	52 398.2	47.9	473	1 440	60.7	42.2
1995	543 104	1 040 371	57 049.6	54.8	671	1 410	20.0	14.2

PEARS (EXCLUDING NASHI).....

	<i>Trees under 6 years</i>	<i>Trees 6 years and over</i>	<i>Production</i>	<i>Yield</i>
<i>Statistical division</i>	no.	no.	t	kg/tree
Greater Hobart and Southern	2 650	9 291	426.7	45.9
Northern	657	3 838	196.6	51.2
Mersey-Lyell	—	2 936	118.3	40.3
Tasmania				
1997	3 307	16 065	741.5	46.2
1996	2 888	17 962	804.3	44.8
1995	4 322	18 568	789.6	42.5

(a) Yield is calculated for trees 6 years and over only. However, the production figure used to calculate yield includes any contribution by trees 6 years and under. In most cases this contribution is relatively insignificant, but in some instances it can distort yield figures.

APRICOTS

CHERRIES

	<i>Trees under 6 years</i>	<i>Trees 6 years and over</i>	<i>Production</i>	<i>Yield</i>		<i>Trees under 6 years</i>	<i>Trees 6 years and over</i>	<i>Production</i>	<i>Yield</i>
<i>Statistical division</i>	no.	no.	t	kg/tree		no.	no.	t	kg/tree
Greater Hobart and Southern	17 220	26 925	204.3	7.6		44 203	29 045	115.3	4.0
Northern	900	1 311	0.5	0.4		4 020	2 780	12.3	4.4
Mersey-Lyell	—	—	—	—		39 557	5 663	57.3	10.1
Tasmania									
1997	18 120	28 236	204.8	7.3		87 780	37 488	184.9	4.9
1996	13 651	27 647	212.1	7.7		62 446	37 046	191.6	5.2
1995	9 901	34 159	368.1	10.8		65 116	26 822	158.8	5.9

NECTARINES

PEACHES

	<i>Trees under 6 years</i>	<i>Trees 6 years and over</i>	<i>Production</i>	<i>Yield</i>		<i>Trees under 6 years</i>	<i>Trees 6 years and over</i>	<i>Production</i>	<i>Yield</i>
<i>Statistical division</i>	no.	no.	t	kg/tree		no.	no.	t	kg/tree
Greater Hobart and Southern	12 981	3 409	29.9	8.8		6 380	979	11.2	11.5
Northern	360	2 320	8.0	3.4		340	2 100	5.9	2.8
Mersey-Lyell	25	—	2.6	—		—	10	0.1	10.0
Tasmania									
1997	13 366	5 729	40.5	7.1		6 720	3 089	17.3	5.6
1996	10 284	9 788	43.4	4.4		5 026	3 030	20.9	6.9
1995	4 589	7 487	77.9	10.4		1 706	3 011	15.2	5.0

PLUMS AND PRUNES.....

	<i>Trees under 6 years</i>	<i>Trees 6 years and over</i>	<i>Production</i>	<i>Yield</i>
<i>Statistical division</i>	no.	no.	t	kg/tree
Greater Hobart and Southern	100	849	3.7	4.4
Northern	250	330	1.0	3.0
Mersey-Lyell	—	300	1.2	4.0
Tasmania				
1997	350	1 479	5.9	4.0
1996	3 464	1 116	9.1	8.2
1995	3 095	870	9.7	11.1

(a) Yield is calculated for trees 6 years and over only. However, the production figure used to calculate yield includes any contribution by trees 6 years and under. In most cases this contribution is relatively insignificant, but in some instances it can distort yield figures.

BLACKCURRANTS

BLUEBERRIES

<i>Statistical division</i>	<i>Area not yet bearing</i> ha	<i>Area of bearing age</i> ha	<i>Production</i> t	<i>Yield</i> t/ha	<i>Area not yet bearing</i> ha	<i>Area of bearing age</i> ha	<i>Production</i> t	<i>Yield</i> t/ha
Greater Hobart and Southern	3.0	87.0	662.0	7.6	0.2	3.5	14.8	4.2
Northern	2.0	19.3	88.2	4.6	3.5	7.9	25.8	3.3
Mersey-Lyell	6.0	45.0	178.0	4.0	1.0	2.0	1.6	0.8
Tasmania								
1997	11.0	151.3	928.4	6.1	4.7	13.4	42.1	3.1
1996	25.0	162.5	665.0	4.1	n.c.	n.c.	n.c.	n.c.
1995	10.9	137.3	632.7	4.6	n.c.	n.c.	n.c.	n.c.

RASPBERRIES

STRAWBERRIES

<i>Statistical division</i>	<i>Area not yet bearing</i> ha	<i>Area of bearing age</i> ha	<i>Production</i> t	<i>Yield</i> t/ha	<i>Area not yet bearing</i> ha	<i>Area of bearing age</i> ha	<i>Production</i> t	<i>Yield</i> t/ha
Greater Hobart and Southern	2.7	22.8	47.3	2.1	1.3	10.1	92.8	9.2
Northern	—	15.0	34.5	2.3	0.6	5.3	10.5	2.0
Mersey-Lyell	—	5.9	22.7	3.8	2.0	4.6	25.7	5.6
Tasmania								
1997	2.7	43.7	104.5	2.4	3.9	20.0	129.0	6.5
1996	8.5	48.4	112.4	2.3	0.6	19.2	135.4	7.1
1995	3.7	46.0	136.7	3.0	5.3	24.7	153.9	6.2

22

GROSS VALUE OF POME AND OTHER FRUIT, Years ended 31 March

	1995	1996r	1997p
	\$m	\$m	\$m
Apples	42.8	46.7	54.2
Apricots	0.8	0.4	0.4
Cherries	0.8	1.1	2.2
Grapes	4.2	3.8	3.0
Nectarines	0.1	0.1	0.1
Peaches	—	—	—
Pears	0.6	0.7	0.6
Raspberries	0.7	0.6	0.7
Strawberries	0.7	0.5	0.6
Other, including nuts	1.5	1.5	1.2
Total	52.2	55.4	63.0

23

GRAPES, Year ended 31 March 1997

AREA OF VINES AT HARVEST

GRAPE PRODUCTION

Not yet bearing (planted or grafted)

	Prior to collection year	During collection year	Bearing	Winemaking	Table & other	Total
Statistical division	ha	ha	ha	t	t	t
Greater Hobart and Southern	40.7	14.9	106.0	384.8	—	384.8
Northern	57.2	26.3	221.0	1 076.7	—	1 076.7
Mersey-Lyell	3.7	—	14.0	35.3	—	35.3
Tasmania						
1997	101.6	41.2	341.0	1 496.8	—	1 496.8
1996	88.2	62.8	324.3	1 987.8	0.8	1 988.6
1995	66.7	39.9	293.1	2 200.5	—	2 200.5

	Units	1995	1996	1997
Asparagus				
area	ha	13.7	11.0	11.0
production	t	47.9	20.5	13.0
yield	t/ha	3.5	1.9	1.2
Beans — French and runner				
area	ha	1 219.3	1 667.7	1 667.8
production	t	8 461.9	9 453.4	14 154.0
yield	t/ha	6.9	5.7	8.5
Broccoli				
area	ha	403.3	582.5	515.0
production	t	2 732.5	3 666.7	4 252.6
yield	t/ha	6.8	6.3	8.3
Brussel sprouts				
area	ha	43.3	59.5	54.9
production	t	696.6	974.2	891.5
yield	t/ha	16.1	16.4	16.2
Cabbages				
area	ha	83.6	94.5	84.2
production	t	2 484.7	2 317.9	2 484.2
yield	t/ha	29.7	24.5	29.5
Capsicums, chillies, peppers				
area	ha	n.c.	n.c.	0.6
production	t	n.c.	n.c.	8.3
yield	t/ha	n.c.	n.c.	13.8
Carrots				
area	ha	425.4	458.6	473.8
production	t	21 539.8	21 255.8	22 545.8
yield	t/ha	50.6	46.3	47.6
Cauliflower				
area	ha	308.0	306.3	305.5
production	t	4 928.4	4 360.5	4 851.0
yield	t/ha	16.0	14.2	15.9
Celery				
area	ha	24.0	21.1	15.5
production	t	790.0	531.1	388.5
yield	t/ha	32.9	25.2	25.1
Chinese Cabbage				
area	ha	n.c.	n.c.	4.3
production	t	n.c.	n.c.	0.4
yield	t/ha	n.c.	n.c.	0.1
Cucumber				
area	ha	2.0	1.3	1.8
production	t	108.6	89.4	156.7
yield	t/ha	54.3	68.8	87.1
Green peas (pod weight)				
area	ha	6 040.9	6 105.0	6 332.6
production	t	37 946.0	65 671.0	71 736.9
yield	t/ha	6.3	10.8	11.3
Leeks				
area	ha	5.3	7.6	11.5
production	t	45.9	34.4	115.1
yield	t/ha	8.7	4.5	10.0
Lettuces				
area	ha	85.8	103.5	141.3
production	t	1 697.2	1 891.0	2 456.8
yield	t/ha	19.8	18.3	17.4
Marrows and squashes				
area	ha	n.c.	n.c.	60.4
production	t	n.c.	n.c.	571.9
yield	t/ha	n.c.	n.c.	9.5
Mushrooms				
area	ha	1.6	1.6	1.3
production	t	503.3	644.0	855.6
yield	t/ha	314.6	402.5	658.2
Onions — white and brown				
area	ha	1 482.1	1 632.3	1 191.7
production	t	73 536.9	91 119.2	59 677.3
yield	t/ha	49.6	55.8	50.1

	Units	1995	1996	1997
Parsley				
area	ha	n.c.	n.c.	7.4
production	t	n.c.	n.c.	17.6
yield	t/ha	n.c.	n.c.	2.4
Parsnips				
area	ha	36.3	26.7	40.2
production	t	484.6	447.0	1 290.3
yield	t/ha	13.3	16.7	32.1
Potatoes				
area	ha	6 067.8	7 565.2	7 435.5
production	t	255 737.8	302 034.8	317 448.3
yield	t/ha	42.1	39.9	42.7
Pumpkins				
area	ha	107.3	111.6	107.4
production	t	2 164.6	1 903.2	1 885.3
yield	t/ha	20.2	17.1	17.6
Snow Peas				
area	ha	n.c.	n.c.	0.6
production	t	n.c.	n.c.	1.6
yield	t/ha	n.c.	n.c.	2.7
Spring onions				
area	ha	22.5	15.6	7.6
production	t	341.1	190.1	135.8
yield	t/ha	15.2	12.2	17.9
Swedes				
area	ha	227.0	253.0	206.7
production	t	3 799.2	5 066.8	3 800.6
yield	t/ha	16.7	20.0	18.4
Sweet corn				
area	ha	345.0	386.7	320.5
production	t	6 107.7	6 883.8	5 351.5
yield	t/ha	17.7	17.8	16.7
Tomatoes				
area	ha	14.0	14.6	11.4
production	t	831.2	761.7	682.2
yield	t/ha	59.4	52.2	59.8
Zucchini				
area	ha	n.c.	n.c.	5.0
production	t	n.c.	n.c.	96.6
yield	t/ha	n.c.	n.c.	19.3

	Units	Greater Hobart and Southern	Northern	Mersey-Lyell
Asparagus				
area	ha	6.0	2.0	3.0
production	t	—	3.0	10.0
yield	t/ha	—	1.5	3.3
Beans — French and runner				
area	ha	49.3	439.5	1 179.0
production	t	292.1	3 535.5	10 326.3
yield	t/ha	5.9	8.0	8.8
Broccoli				
area	ha	36.5	62.4	416.1
production	t	224.1	594.0	3 434.5
yield	t/ha	6.1	9.5	8.3
Brussel Sprouts				
area	ha	—	2.6	52.3
production	t	—	23.0	868.5
yield	t/ha	—	8.8	16.6
Cabbages				
area	ha	16.0	11.6	56.6
production	t	275.2	283.0	1 926.0
yield	t/ha	17.2	24.4	34.0
Capsicums, chillies, peppers				
area	ha	—	0.1	0.5
production	t	—	0.3	8.0
yield	t/ha	—	3.0	16.0
Carrots				
area	ha	2.2	75.3	396.3
production	t	39.0	3 436.5	19 070.3
yield	t/ha	17.7	45.6	48.1
Cauliflower				
area	ha	22.2	21.5	261.8
production	t	349.6	400.9	4 100.5
yield	t/ha	15.7	18.6	15.7
Celery				
area	ha	—	—	15.5
production	t	—	—	388.5
yield	t/ha	—	—	25.1
Chinese cabbage				
area	ha	4.3	—	—
production	t	0.4	—	—
yield	t/ha	0.1	—	—
Cucumber				
area	ha	0.9	0.4	0.5
production	t	113.0	5.1	38.6
yield	t/ha	125.6	12.8	77.2
Green peas (pod weight)				
area	ha	730.0	3 203.8	2 398.8
production	t	10 283.4	33 018.4	28 435.1
yield	t/ha	14.1	10.3	11.9
Leeks				
area	ha	0.8	2.1	8.6
production	t	7.4	25.3	82.5
yield	t/ha	9.3	12.0	9.6
Lettuces				
area	ha	60.3	44.3	36.7
production	t	1 819.6	362.9	274.3
yield	t/ha	30.2	8.2	7.5
Marrows and squashes				
area	ha	—	40.4	20.0
production	t	—	402.1	169.8
yield	t/ha	—	10.0	8.5
Mushrooms				
area	ha	0.1	—	1.2
production	t	570.6	—	285.0
yield	t/ha	5 706.0	—	237.5
Onions — white and brown				
area	ha	21.9	248.2	921.6
production	t	1 027.5	11 133.0	47 516.8
yield	t/ha	46.9	44.9	51.6

VEGETABLES FOR HUMAN CONSUMPTION, Statistical divisions, Year ended 31 March 1997

	Units	Greater Hobart and Southern	Northern	Mersey-Lyell
Parsley				
area	ha	2.4	3.9	1.1
production	t	11.0	3.4	3.2
yield	t/ha	4.6	0.9	2.9
Parsnips				
area	ha	—	21.2	19.0
production	t	—	900.3	390.0
yield	t/ha	—	42.5	20.5
Potatoes				
area	ha	215.1	2 538.4	4 682.0
production	t	4 890.0	105 492.5	207 065.8
yield	t/ha	22.7	41.6	44.2
Pumpkins				
area	ha	7.6	10.6	89.2
production	t	30.8	140.5	1 714.0
yield	t/ha	4.1	13.3	19.2
Snow Peas				
area	ha	—	—	0.6
production	t	—	—	1.6
yield	t/ha	—	—	2.7
Spring onions				
area	ha	4.1	0.5	3.0
production	t	46.0	2.6	87.2
yield	t/ha	11.2	5.2	29.1
Swedes				
area	ha	12.5	26.9	167.3
production	t	96.0	374.3	3 330.3
yield	t/ha	7.7	13.9	19.9
Sweet corn				
area	ha	7.8	32.9	279.8
production	t	93.5	497.3	4 760.7
yield	t/ha	12.0	15.1	17.0
Tomatoes				
area	ha	3.9	4.2	3.3
production	t	269.6	191.2	221.4
yield	t/ha	69.1	45.5	67.1
Zucchini				
area	ha	0.9	0.2	3.9
production	t	12.6	2.0	82.0
yield	t/ha	14.0	10.0	21.0

	1995	1996r	1997p
	\$m	\$m	\$m
Asparagus	0.2	0.1	0.1
Beans — French and runner	3.6	4.8	5.5
Broccoli	2.8	4.9	5.2
Cabbages and brussel sprouts	1.2	2.5	2.4
Carrots	4.8	4.4	8.3
Cauliflower	2.8	2.5	2.7
Celery	0.6	0.4	0.4
Green peas	12.1	9.7	12.8
Lettuces	2.3	1.9	2.5
Onions — white and brown	16.8	20.4	16.3
Potatoes	52.2	66.8	84.8
Pumpkins	0.7	0.5	0.5
Tomatoes	0.9	1.5	1.8
Other vegetables	9.5	15.7	11.8
Total	109.8	136.1	155.1

AREA OF NURSERIES AND CUT FLOWERS, Year ended 31 March 1997

Statistical division	Nurseries	Cut flowers
	ha	ha
Greater Hobart and Southern	62.8	60.8
Northern	14.0	15.3
Mersey-Lyell	65.0	22.2
Tasmania		
1997	141.8	98.3
1996	111.8	54.5
1995	141.0	121.0

28

MEAT CATTLE NUMBERS, AT 31 March 1997

<i>Statistical division</i>	<i>Bulls and bull calves intended for service</i>	<i>Cows and heifers one year and over</i>	<i>Heifers and other calves under one year</i>	<i>Other cattle one year and over</i>	<i>Total meat cattle</i>	<i>Percentage of total meat cattle herd</i>
	'000	'000	'000	'000	'000	%
Greater Hobart and Southern	2.3	47.8	29.6	9.3	89.0	17.3
Northern	5.2	104.9	66.4	36.7	213.1	41.4
Mersey-Lyell	4.5	88.9	63.6	55.4	212.4	41.3
Tasmania						
1997	12.0	241.6	159.6	101.3	514.6	100.0
1996	11.7	233.2	159.5	116.7	521.0	100.0
1995	11.5	223.7	161.7	111.1	507.4	100.0

29

ESTABLISHMENTS WITH MEAT CATTLE, At 31 March 1997

<i>Statistical division</i>	<i>Bulls and bull calves intended for service</i>	<i>Cows and heifers one year and over</i>	<i>Heifers and other calves under one year</i>	<i>Other cattle one year and over</i>	<i>Total establishments with meat cattle</i>	<i>Percentage of establishments with meat cattle</i>
	no.	no.	no.	no.	no.	%
Greater Hobart and Southern	525	635	582	373	692	21.8
Northern	926	1 037	1 000	807	1 197	37.7
Mersey-Lyell	818	947	940	941	1 286	40.5
Tasmania						
1997	2 289	2 619	2 522	2 121	3 175	100.0
1996	2 233	2 594	2 555	2 196	3 244	100.0
1995	2 289	2 580	2 591	2 073	3 265	100.0

NUMBER OF ESTABLISHMENTS AND MEAT CATTLE BY HERD SIZE, At 31 March

1996			1997		
Herd size	Establishments	Percentage of establishments with meat cattle	Establishments	Percentage of establishments with meat cattle	
	no.	%	no.	%	
1-29	651	20.1	648	20.4	
30-49	469	14.5	445	14.0	
50-69	351	10.8	374	11.8	
70-99	409	12.6	397	12.5	
100-149	429	13.2	418	13.2	
150-199	262	8.1	230	7.2	
200-299	255	7.9	244	7.7	
300-399	122	3.8	140	4.4	
400-499	90	2.8	83	2.6	
500-699	93	2.9	80	2.5	
700-999	56	1.7	61	1.9	
1,000-1,499	32	1.0	27	0.9	
1,500-1,999	14	0.4	16	0.5	
2,000-4,999	11	0.3	11	0.3	
5,000 and over	—	—	1	—	
Total	3 244	100.0	3 175	100.0	

1996.....			1997		
Herd size	Number of meat cattle	Percentage of total meat cattle	Number of meat cattle	Percentage of total meat cattle	
	'000	%	'000	%	
1-29	10.2	2.0	10.1	2.0	
30-49	18.3	3.5	17.4	3.4	
50-69	20.7	4.0	22.0	4.3	
70-99	34.1	6.5	33.1	6.4	
100-149	52.4	10.1	51.5	10.0	
150-199	45.0	8.6	39.5	7.7	
200-299	61.1	11.7	58.2	11.3	
300-399	42.0	8.1	48.3	9.4	
400-499	40.4	7.8	37.0	7.2	
500-699	54.6	10.5	46.4	9.0	
700-999	45.9	8.8	51.1	9.9	
1,000-1,499	37.7	7.2	34.1	6.6	
1,500-1,999	24.3	4.7	27.8	5.4	
2,000-4,999	34.3	6.6	32.8	6.4	
5,000 and over	—	—	5.2	1.0	
Total	521.0	100.0	514.6	100.0	

31

MILK CATTLE NUMBERS, At 31 March 1997(a)

	Cows in milk and dry	Other milk cattle	Total milk cattle	Percentage of total milk cattle herd
Statistical division	'000	'000	'000	%
Greater Hobart and Southern	4.3	2.0	6.3	3.0
Northern	49.6	28.2	77.9	37.0
Mersey-Lyell	83.2	43.2	126.4	60.0
Tasmania				
1997	137.2	73.5	210.6	100.0
1996	129.6	67.0	196.6	100.0
1995	118.9	66.4	185.3	100.0

(a) Excludes house cows.

32

ESTABLISHMENTS WITH MILK CATTLE, At 31 March 1997(a)

	Cows in milk and dry	Other milk cattle	Total establishments with milk cattle	Percentage of establishments with milk cattle
Statistical division	no.	no.	no.	%
Greater Hobart and Southern	43	40	51	5.4
Northern	286	292	320	33.9
Mersey-Lyell	496	521	573	60.7
Tasmania				
1997	825	853	944	100.0
1996	827	818	925	100.0
1995	823	836	895	100.0

(a) Excludes house cows.

NUMBER OF ESTABLISHMENTS AND MILK CATTLE BY HERD SIZE, At 31 March(a)

1996			1997		
Herd size	Establishments	Percentage of establishments with milk cattle	Establishments	Percentage of establishments with milk cattle	
	no.	%	no.	%	
1-49	141	15.2	155	16.4	
50-99	137	14.8	120	12.7	
100-149	152	16.4	143	15.1	
150-199	122	13.2	120	12.7	
200-249	99	10.7	124	13.1	
250-299	78	8.4	76	8.1	
300-349	70	7.6	58	6.1	
350-399	36	3.9	41	4.3	
400-499	35	3.8	45	4.8	
500 and over	55	5.9	62	6.6	
Total	925	100.0	944	100.0	

1996			1997		
Herd size	Number of milk cattle	Percentage of total milk cattle	Number of milk cattle	Percentage of total milk cattle	
	'000	%	'000	%	
1-49	3.1	1.6	3.1	1.5	
50-99	10.0	5.1	8.8	4.2	
100-149	18.7	9.5	17.5	8.3	
150-199	21.2	10.8	20.9	9.9	
200-249	22.0	11.2	27.4	13.0	
250-299	21.4	10.9	20.5	9.7	
300-349	22.3	11.3	18.6	8.8	
350-399	13.3	6.8	15.2	7.2	
400-499	15.3	7.8	19.6	9.3	
500 and over	49.4	25.1	59.0	28.0	
Total	196.6	100.0	210.6	100.0	

(a) Excludes house cows.

34

NUMBER OF SHEEP AND LAMBS, At 31 March 1997

<i>Statistical division</i>	<i>Breeding ewes (1 year and over)</i>	<i>Lambs and hoggets (under 1 year)</i>	<i>All other sheep</i>	<i>Total sheep and lambs</i>	<i>Percentage of total sheep flock</i>
	'000	'000	'000	'000	%
Greater Hobart and Southern	724.4	491.9	563.6	1 780.0	44.8
Northern	829.2	531.8	653.2	2 014.2	50.7
Mersey-Lyell	79.7	61.0	41.7	182.4	4.6
Tasmania					
1997	1 633.3	1 084.8	1 258.4	3 976.6	100.0
1996	1 631.9	993.9	1 236.5	3 862.3	100.0
1995	n.c.	937.1	n.c.	3 852.9	100.0

35

ESTABLISHMENTS WITH SHEEP AND LAMBS, At 31 March 1997

<i>Statistical division</i>	<i>Breeding ewes (1 year and over)</i>	<i>Lambs and hoggets (under 1 year)</i>	<i>All other sheep</i>	<i>Total establishments with sheep and lambs</i>	<i>Percentage of establishments with sheep and lambs</i>
	no.	no.	no.	no.	%
Greater Hobart and Southern	604	582	629	660	33.9
Northern	816	749	843	899	46.1
Mersey-Lyell	312	265	330	390	20.0
Tasmania					
1997	1 732	1 596	1 802	1 949	100.0
1996	1 790	1 570	1 843	2 012	100.0
1995	n.c.	1 646	n.c.	2 058	100.0

NUMBER OF ESTABLISHMENTS AND SHEEP AND LAMBS BY FLOCK SIZE, At 31 March

	1996		1997	
<i>Flock size</i>	<i>Establishments</i> no.	<i>Percentage of establishments</i> <i>with sheep and lambs</i> %	<i>Establishments</i> no.	<i>Percentage of establishments</i> <i>with sheep and lambs</i> %
1-499	957	47.6	898	46.1
500-999	280	13.9	282	14.5
1 000-1 499	163	8.1	143	7.3
1 500-1 999	89	4.4	94	4.8
2 000-2 499	77	3.8	78	4.0
2 500-2 999	65	3.2	67	3.4
3 000-3 999	93	4.6	92	4.7
4 000-4 999	59	2.9	61	3.1
5 000-5 999	64	3.2	57	2.9
6 000-6 999	31	1.5	34	1.7
7 000-7 999	26	1.3	28	1.4
8 000-8 999	16	0.8	22	1.1
9 000-9 999	22	1.1	22	1.1
10 000 and over	70	3.5	71	3.6
Total	2 012	100.0	1 949	100.0

	1996		1997	
<i>Flock size</i>	<i>Number of</i> <i>sheep and lambs</i> '000	<i>Percentage of total</i> <i>sheep & lambs</i> %	<i>Number of</i> <i>sheep and lambs</i> '000	<i>Percentage of</i> <i>total sheep & lambs</i> %
1-499	177.3	4.6	167.5	4.2
500-999	201.1	5.2	204.6	5.1
1 000-1 499	199.7	5.2	179.7	4.5
1 500-1 999	153.4	4.0	161.4	4.1
2 000-2 499	171.2	4.4	174.0	4.4
2 500-2 999	176.8	4.6	183.4	4.6
3 000-3 999	322.8	8.4	320.7	8.1
4 000-4 999	262.0	6.8	272.3	6.8
5 000-5 999	353.1	9.1	314.8	7.9
6 000-6 999	196.9	5.1	219.2	5.5
7 000-7 999	196.4	5.1	207.7	5.2
8 000-8 999	135.9	3.5	185.5	4.7
9 000-9 999	205.8	5.3	207.1	5.2
10 000 and over	1 110.2	28.7	1 178.8	29.6
Total	3 862.3	100.0	3 976.6	100.0

37

LAMBING, Year ended 31 March 1997

LAMBING EXPECTATIONS YEAR ENDED 31 MARCH 1998(c)

<i>Statistical division</i>	<i>Ewes mated(a)</i>	<i>Lambs marked</i>	<i>Lamb marking ratio(b)</i>	<i>Joined to merino rams</i>	<i>Joined to short wool rams</i>	<i>Joined to other rams</i>	<i>Total</i>
	'000	'000	%	'000	'000	'000	'000
Greater Hobart and Southern	654.3	589.1	90.0	446.8	158.3	98.6	703.7
Northern	752.0	653.2	86.9	466.6	194.7	123.9	785.2
Mersey-Lyell	74.5	73.9	99.2	20.5	32.5	25.4	78.4
Tasmania							
1997	1 480.7	1 316.2	88.9	933.9	385.5	247.9	1 567.3
1996	1 463.0	1 257.5	86.0	930.4	n.c.	n.c.	1 538.2
1995	1 535.0	1 233.6	80.4	917.1	n.c.	n.c.	1 459.9

(a) Ewes mated to produce lambs marked in the season shown.

(b) Lambs marked as a proportion of ewes mated to produce lambs.

(c) Forecast made at the end of the 1996-97 season.

38

PIG NUMBERS(a) AND NUMBER OF ESTABLISHMENTS, At 31 March 1997

<i>Statistical division</i>	<i>Total establishments with pigs</i>	<i>Percentage of establishments with pigs</i>	<i>Total pigs</i>	<i>Percentage of total pigs</i>
	no.	%	no.	%
Greater Hobart and Southern	26	24.3	2 299	9.6
Northern	41	38.3	17 313	72.6
Mersey-Lyell	40	37.4	4 240	17.8
Tasmania				
1997	107	100.0	23 852	100.0
1996	122	100.0	26 449	100.0
1995	151	100.0	38 113	100.0

(a) Includes suckers, weaners, growers etc.

NUMBER OF ESTABLISHMENTS AND PIGS BY HERD SIZE(a), At 31 March

1996.....

1997

Herd size	1996		1997	
	Establishments no.	Percentage of establishments with pigs %	Establishments no.	Percentage of establishments with pigs %
1-9	34	27.9	23	21.5
10-19	27	22.1	19	17.8
20-29	8	6.6	11	10.3
30-39	3	2.5	4	3.7
40-49	3	2.5	3	2.8
50-69	6	4.9	7	6.5
70-99	6	4.9	4	3.7
100-149	4	3.3	5	4.7
150-199	5	4.1	3	2.8
200-299	8	6.6	5	4.7
300-499	9	7.4	14	13.1
500-699	3	2.5	2	1.9
700-999	—	—	1	0.9
1 000 and over	6	4.9	6	5.6
Total	122	100.0	107	100.0

1996

1997

Herd size	1996		1997	
	Number of pigs no.	Percentage of total pigs %	Number of pigs no.	Percentage of total pigs %
1-9	136	0.5	93	0.4
10-19	336	1.3	264	1.1
20-29	182	0.7	282	1.2
30-39	108	0.4	132	0.6
40-49	121	0.5	143	0.6
50-69	337	1.3	398	1.7
70-99	496	1.9	315	1.3
100-149	529	2.0	617	2.6
150-199	825	3.1	500	2.1
200-299	1 938	7.3	1 100	4.6
300-499	3 083	11.7	5 238	22.0
500-699	1 734	6.6	1 071	4.5
700-999	—	—	732	3.1
1 000 and over	16 624	62.9	12 967	54.4
Total	26 449	100.0	23 852	100.0

(a) Includes suckers, weaners, growers etc.

40

POULTRY

LAYING CHICKENS.....

OTHER POULTRY

Statistical division	Number on holding at 31 March 1997	Number disposed of year ending 31 March 1997	Ducks at 31 March 1997	Turkeys at 31 March 1997
	no.	no.	no.	no.
Greater Hobart and Southern	154 525	232 360	—	35
Northern	93 603	69 293	38	6
Mersey-Lyell	38 541	60 500	49	2 000
Tasmania				
1997	286 669	362 153	87	2 041
1996	263 201	241 661	123	1 503

41

NUMBER OF OTHER LIVESTOCK, At 31 March 1997

Statistical division	Alpacas	Deer	Emus	Goats	Horses for breeding(a)	Ostriches
	no.	no.	no.	no.	no.	no.
Greater Hobart and Southern	59	7 036	2 792	1 348	428	1 281
Northern	—	7 067	127	2 269	714	14
Mersey-Lyell	68	3 057	278	876	321	376
Tasmania						
1997	127	17 160	3 197	4 493	1 463	1 671
1996	n.c.	16 929	n.c.	n.c.	1 370	n.c.
1995	n.c.	18 061	n.c.	n.c.	1 238	n.c.

(a) Comprises horses on establishments with agricultural activity.

	<i>Dairy bulls</i>	<i>Beef bulls</i>	<i>Other cattle</i>	<i>Pigs</i>
<i>Statistical division</i>	'000	'000	'000	'000
Greater Hobart and Southern	—	0.2	33.5	6.6
Northern	0.1	1.0	95.4	29.5
Mersey-Lyell	0.4	0.7	119.3	8.9
Tasmania				
1997	0.5	2.0	248.2	45.0
1996	0.5	1.9	266.4	53.2
1995	0.6	2.0	264.2	77.8
	<i>Lambs and hoggets</i>	<i>All other sheep</i>	<i>Horses</i>	<i>Deer</i>
<i>Statistical division</i>	'000	'000	'000	'000
Greater Hobart and Southern	197.8	245.9	0.1	1.7
Northern	246.9	282.5	0.2	1.1
Mersey-Lyell	61.4	29.7	0.1	0.9
Tasmania				
1997	506.1	558.1	0.4	3.8
1996	508.1	655.1	0.2	5.4
1995	521.9	743.5	0.2	6.7

	Units	1995	1996	1997
Number of livestock slaughtered(a)(b)				
Cattle	'000	199.3	193.6	203.6
Calves	'000	26.3	41.9	43.6
Sheep	'000	582.7	418.4	384.4
Lambs	'000	479.1	433.4	364.0
Pigs	'000	94.0	86.0	74.9
Meat produced(a)(c)				
Beef	tonnes	49 262	46 255	49 290
Veal	tonnes	888	1 115	884
Mutton	tonnes	11 317	8 751	7 739
Lamb	tonnes	8 248	8 054	6 745
Pig	tonnes	6 108	5 591	5 006
Whole milk intake by factories(d)	million litres	446	485	529
Wool(e)				
Brokers and dealers receivals of taxable wool	tonnes	18 201.3	15 605.9	18 876.0
Eggs produced	'000 dozen	4 098.5	4 151.6	4 001.4

(a) Source: ABS "Monthly Livestock Products" publication, Catalogue No. 7215.0.

(b) Includes estimates of animals slaughtered on farms and country butchers.

(c) Dressed carcass weight, excluding offal.

(d) Source: Australian Dairy Corporation.

(e) Sources: National Council of Wool Selling Brokers of Australia and ABS Wool Brokers and Dealers Collection.

44

GROSS VALUE OF LIVESTOCK PRODUCTS & OTHER DISPOSALS, Years ended 31 March

	1995	1996r	1997p
	\$m	\$m	\$m
Livestock slaughterings(a)			
Cattle and calves	106.1	69.7	75.1
Sheep and lambs(b)	11.7	15.2	18.9
Other	21.7	20.4	23.1
Total	139.5	105.3	117.1
Wool			
Shorn and crutched	102.4	65.7	79.8
Other(c)	4.4	2.2	2.3
Total	106.8	67.9	82.1
Production of milk			
Human consumption	26.7	23.2	23.8
Manufacturing	80.8	116.2	108.8
Total	107.5	139.4	132.6
Eggs	7.7	9.7	9.0
Honey and beeswax	2.1	1.7	2.1

(a) Includes net exports of livestock.

(b) Excludes value of wool on skins.

(c) Includes dead and fellmongered wool and wool on skins.

45

BEEKEEPING, SUMMARY STATISTICS, Years ended 30 June

Units	1995	1996	1997
Number of apiarists	no. 30	29	30
Beehives			
Productive(a)	no. 12 860	12 852	13 296
Unproductive	no. 2 038	1 433	1 256
Total	no. 14 898	14 285	14 552
Honey produced			
Quantity	kg 978 978	741 177	1 012 277
Average production(b)	kg/hive 76.1	57.7	76.1
Beeswax produced	kg 12 952	12 589	13 916

(a) Beehives from which honey was taken.

(b) Average production per productive beehive.

VEGETABLES 0113

FRUIT 0114-0119

Items	1994-95		1995-96		1994-95		1995-96	
	\$m	%	\$m	%	\$m	%	\$m	%
Sales from crops	87.4	13	112.1	25	67.1	33	46.4	10
Sales from livestock	14.7	33	15.5	27	0.8	48	1.1	42
Sales from livestock products	7.1	67	1.6	31	0.2	0	0.3	2
Turnover	121.5	14	136.7	22	74.4	31	53.7	10
Purchases and selected expenses	64.3	14	76.4	23	44.8	48	25.1	9
Value added(a)	57.2	16	57.7	25	29.5	13	28.5	12
Adjusted value added(a)	50.9	17	51.3	27	25.7	14	25.7	13
Gross operating surplus(a)	32.5	20	35.8	28	10.3	49	14.0	22
Interest paid	6.2	31	5.0	29	2.7	33	2.7	30
Cash operating surplus(b)	27.2	25	31.9	32	8.4	60	11.6	31
Gross indebtedness	60.8	30	58.7	27	31.7	43	32.5	26
Total net capital expenditure	8.7	31	10.5	21	1.4	50	4.4	22

PIGS 0151

GRAIN-SHEEP/BEEF CATTLE 0122

Items	1994-95		1995-96		1994-95		1995-96	
	\$m	%	\$m	%	\$m	%	\$m	%
Sales from crops	0.4	37	1.1	15	0.8	29	2.5	45
Sales from livestock	7.6	13	8.4	3	0.6	30	0.8	58
Sales from livestock products	0.5	50	0.5	28	1.0	23	2.9	64
Turnover	9.3	12	10.5	5	2.6	23	9.9	46
Purchases and selected expenses	6.1	12	8.9	3	1.7	20	4.5	44
Value added(a)	2.9	17	1.2	27	2.0	38	8.7	49
Adjusted value added(a)	2.5	*	0.9	36	1.7	41	7.9	50
Gross operating surplus(a)	1.9	*	0.1	**	1.5	45	7.4	49
Interest paid	0.4	37	0.3	19	0.2	22	1.9	71
Cash operating surplus(b)	1.9	18	0.2	*	0.2	*	2.2	71
Gross indebtedness	5.9	31	4.4	27	1.8	17	25.0	56
Total net capital expenditure	0.5	28	0.5	20	0.2	39	—	*

(a) Includes an estimate for the value of the increase in livestock.

(b) Excludes an estimate for the value of the increase in livestock.

NOTE: Standard error of change between two successive years is 1.3 times the standard error of the estimate (except for the all industries estimate where it is equal to the standard error of the estimate). Standard error of change between estimates two years apart could be as high as 1.8 times the standard error of the estimate (except for the all industries estimate where it could be 1.5 times the standard error of the estimate).

SHEEP-BEEF CATTLE 0123

SHEEP 0124

Items	1994-95	SE	1995-96	SE	1994-95	SE	1995-96	SE
	\$m	%	\$m	%	\$m	%	\$m	%
Sales from crops	0.5	71	1.7	63	7.8	53	5.7	53
Sales from livestock	17.2	32	22.3	12	20.0	29	13.4	17
Sales from livestock products	13.5	34	19.1	14	50.0	25	33.2	19
Turnover	36.5	28	55.8	18	84.3	20	61.5	16
Purchases and selected expenses	18.7	25	46.3	18	47.4	18	31.4	20
Value added(a)	13.0	39	30.5	27	36.1	25	59.1	17
Adjusted value added(a)	10.4	43	25.4	32	29.8	28	53.1	18
Gross operating surplus(a)	6.0	48	14.2	69	20.3	33	42.3	21
Interest paid	2.3	49	5.9	28	10.4	28	6.8	34
Cash operating surplus(b)	9.0	43	-11.7	*	9.7	68	7.7	76
Gross indebtedness	13.0	48	48.8	36	102.2	31	72.4	32
Total net capital expenditure	1.4	31	2.4	27	7.5	37	-7.4	78

BEEF CATTLE 0125

DAIRY CATTLE 0130

Items	1994-95	SE	1995-96	SE	1994-95	SE	1995-96	SE
	\$m	%	\$m	%	\$m	%	\$m	%
Sales from crops	0.8	25	8.7	89	8.7	54	14.8	50
Sales from livestock	44.8	22	74.6	21	14.3	19	12.5	22
Sales from livestock products	1.4	62	1.7	80	90.3	12	110.7	15
Turnover	55.6	19	101.4	22	120.7	11	146.2	15
Purchases and selected expenses	32.5	21	71.4	24	71.6	10	80.0	14
Value added(a)	9.6	39	4.0	*	66.7	16	72.8	17
Adjusted value added(a)	6.1	56	-2.3	**	60.5	17	66.1	17
Gross operating surplus(a)	3.2	*	-8.1	77	46.3	24	52.6	21
Interest paid	3.0	43	6.1	32	8.2	28	10.3	18
Cash operating surplus(b)	14.5	29	15.0	44	21.0	38	37.8	26
Gross indebtedness	46.1	38	71.1	29	121.7	19	110.6	19
Total net capital expenditure	1.8	32	1.3	*	18.7	26	27.4	30

(a) Includes an estimate for the value of the increase in livestock.

(b) Excludes an estimate for the value of the increase in livestock.

NOTE: Standard error of change between two successive years is 1.3 times the standard error of the estimate (except for the all industries estimate where it is equal to the standard error of the estimate). Standard error of change between estimates two years apart could be as high as 1.8 times the standard error of the estimate (except for the all industries estimate where it could be 1.5 times the standard error of the estimate).

OTHER AGRICULTURE
(0111-0112, 0141-0142, 0152-0159, 0169)

AGRICULTURE ALL INDUSTRIES

Items	1994-95	SE	1995-96	SE	1994-95	SE	1995-96	SE
	\$m	%	\$m	%	\$m	%	\$m	%
Sales from crops	19.6	6	69.8	27	193.2	13	262.8	14
Sales from livestock	4.8	27	6.8	41	124.8	9	155.3	11
Sales from livestock products	37.0	43	35.3	45	201.0	11	205.3	12
Turnover	65.5	26	117.7	19	570.6	6	693.4	7
Purchases and selected expenses	33.4	27	55.6	22	320.4	8	399.6	7
Value added(a)	26.7	28	60.4	22	243.8	7	322.9	8
Adjusted value added(a)	22.0	31	52.4	24	209.5	8	280.3	9
Gross operating surplus(a)	8.1	50	23.0	31	130.1	12	181.2	12
Interest paid	5.1	20	10.0	25	38.4	11	49.0	9
Cash operating surplus(b)	5.9	54	14.9	33	97.8	14	109.6	20
Gross indebtedness	78.9	16	110.4	19	462.1	10	533.8	8
Total net capital expenditure	1.5	28	2.0	44	41.6	17	40.9	28

(a) Includes an estimate for the value of the increase in livestock.

(b) Excludes an estimate for the value of the increase in livestock.

NOTE: Standard error of change between two successive years is 1.3 times the standard error of the estimate (except for the all industries estimate where it is equal to the standard error of the estimate). Standard error of change between estimates two years apart could be as high as 1.8 times the standard error of the estimate (except for the all industries estimate where it could be 1.5 times the standard error of the estimate).

SELECTED FINANCIAL STATISTICS, FARM BUSINESSES, Aggregates

	1991-92	SE	1992-93	SE	1993-94	SE
Items	\$m	%	\$m	%	\$m	%
Sales from crops	161.5	7	193.8	7	197.7	7
Sales from livestock	111.6	7	125.1	7	175.5	10
Sales from livestock products	166.9	4	172.8	5	176.6	6
Turnover	481.7	4	525.8	4	596.7	4
Purchases and selected expenses	274.4	4	304.7	4	352.4	6
Value added(a)	210.6	6	201.8	5	247.2	5
Adjusted value added(a)	179.9	7	168.6	6	210.5	6
Gross operating surplus(a)	121.6	9	103.0	10	132.3	9
Interest paid	53.3	8	45.5	8	36.9	9
Cash operating surplus(b)	69.2	16	77.1	13	96.0	14
Gross indebtedness	473.7	10	472.2	8	480.5	9
Total net capital expenditure	28.6	17	41.6	14	54.7	16

	1994-95	SE	1995-96	SE	1996-97p	SE
Items	\$m	%	\$m	%	\$m	%
Sales from crops	193.2	13	262.8	14	247.0	12
Sales from livestock	124.8	9	155.3	11	126.6	7
Sales from livestock products	201.0	11	205.3	12	163.3	11
Turnover	570.6	6	693.4	7	628.9	6
Purchases and selected expenses	320.4	7	399.6	7	353.8	7
Value added(a)	243.8	7	322.9	8	278.5	7
Adjusted value added(a)	209.5	8	280.3	9	233.3	8
Gross operating surplus(a)	130.1	12	181.2	12	145.0	9
Interest paid	38.4	11	49.0	9	49.4	9
Cash operating surplus(b)	97.8	14	109.6	20	103.6	12
Gross indebtedness	462.1	10	533.8	8	560.4	8
Total net capital expenditure	41.6	17	40.9	28	68.2	11

(a) Includes an estimate for the value of the increase in livestock.

(b) Excludes an estimate for the value of the increase in livestock.

NOTE: Standard error of change between two successive years is 1.3 times the standard error of the estimate (except for the all industries estimate where it is equal to the standard error of the estimate). Standard error of change between estimates two years apart could be as high as 1.8 times the standard error of the estimate (except for the all industries estimate where it could be 1.5 times the standard error of the estimate).

SELECTED FINANCIAL STATISTICS, FARM BUSINESSES, Averages

	1991-92	1992-93	1993-94	1994-95	1995-96	1996-97 ^p
Items	\$'000	\$'000	\$'000	\$'000	\$'000	\$'000
Sales from crops	50.5	61.8	62.8	62.8	84.1	78.2
Sales from livestock	34.9	39.9	55.7	40.5	49.7	40.1
Sales from livestock products	52.2	55.1	56.1	65.3	65.7	51.7
Turnover	150.8	167.6	189.5	185.4	221.8	199.0
Purchases and selected expenses	85.9	97.1	111.9	104.1	127.8	112.0
Value added(a)	65.9	64.3	78.5	79.2	103.3	88.1
Adjusted value added(a)	56.3	53.7	66.8	68.1	89.7	73.8
Gross operating surplus(a)	38.0	32.8	42.0	42.3	58.0	45.9
Interest paid	16.7	14.5	11.7	12.5	15.7	15.6
Cash operating surplus(b)	21.7	24.6	30.5	31.8	35.1	32.8
Gross indebtedness	148.3	150.5	152.6	150.1	170.8	177.3
Total net capital expenditure	9.0	13.3	17.4	13.5	13.1	21.6

(a) Includes an estimate for the value of the increase in livestock.

(b) Excludes an estimate for the value of the increase in livestock.

NOTE: Standard error of change between two successive years is 1.3 times the standard error of the estimate (except for the all industries estimate where it is equal to the standard error of the estimate). Standard error of change between estimates two years apart could be as high as 1.8 times the standard error of the estimate (except for the all industries estimate where it could be 1.5 times the standard error of the estimate).

EXPLANATORY NOTES

INTRODUCTION

1 This publication contains statistics on crops, livestock and livestock products and characteristics of farms; it includes some summary information on the financial performance of agricultural industries and the value of agricultural commodities produced.

SCOPE AND COVERAGE

2 The statistics on crops (including horticulture), livestock numbers, structure of agricultural industries, land management and farm inputs are derived from the annual agricultural census conducted throughout Australia at 31 March, which collects data from establishments with agricultural activity.

3 Establishments which make only a small contribution to overall agricultural production are excluded from the scope of the census. Information is collected from establishments when their estimated value of agricultural operations (EVAO) is above a certain level. These levels have varied in past agricultural censuses, as follows (see note 23 for scope of AFS collection):

- 1993–94 to present EVAO \$5,000 and over;
- 1991–92 to 1992–93 EVAO \$22,500 and over;
- 1986–87 to 1990–91 EVAO \$20,000 and over; and
- 1982–83 to 1985–86 EVAO \$2,500 and over.

4 Table 1 shows the number of agricultural establishments having an EVAO of \$5,000 and over according to the population frame selected for the agricultural census. Once data on these units are collected and processed a small number of them are found to have an EVAO of less than \$5,000. These are shown in the first column in table 5. Some units are found to have an EVAO of zero; these are shown as 'unclassified' in tables 1, 5 and 6.

5 The effect of the lower EVAO cut off of \$5,000 and over from 1993–94 onwards is to include some smaller agricultural establishments that were excluded in previous years. However, because of their small size they are not expected to change greatly the overall commodity totals. Nevertheless, the changes in scope between years mean that care must be taken in comparing census results over time.

6 Information covering commodities such as livestock slaughterings, dairy produce and beekeeping is obtained from separate ABS collections and from organisations such as the Australian Dairy Corporation.

REFERENCE PERIOD

7 Statistics about crops, pastures, vegetables and fruit relate, in general, to the season ended 31 March. Where harvesting was not completed by 31 March in the reference year (for example, maize, apples, grapes and late planted potatoes), the production statistics relate to the completed harvest.

EXPLANATORY NOTES *continued*

ESTABLISHMENTS WITH AGRICULTURAL ACTIVITY

8 An establishment with agricultural activity is a single physical location which is used for the production of crops (including fruit and vegetables) and/or for the raising of livestock and the production of livestock products.

INDUSTRY AND SIZE CLASSIFICATION

9 Establishments in the agricultural sector were classified in accordance with the methodology described in the 1993 *Australian and New Zealand Standard Industrial Classification (ANZSIC) (1292.0)*.

10 The process of determining the industry class for ANZSIC is the 'step by step' method of classification described in Chapter 4 of the *Australian Standard Industrial Classification (1201.0)*. This method requires that the Division code of the unit be determined first. The Subdivision code within the major Division of the unit is then determined, followed by the Group code and finally the Class code of the unit.

11 The Group and Class codes of agricultural units are determined annually by valuing physical crop and livestock information collected in the agricultural census. The valuation procedure allows for the industry classification of individual units to be changed to reflect significant or long-term changes in their activities.

12 However, the valuation procedure provides for a dampening or resistance effect to offset instability in allocation to particular classes of the classification which would arise from short-term factors such as floods and drought. To obviate such effects, the valuation procedure takes into account (without double counting) the area of crops sown and numbers of livestock on holdings at a point in time as well as the crops produced and livestock turnover during the year. The resultant aggregation of these commodity values is termed the Estimated Value of Agricultural Operations (EVAO). It should be noted that EVAO is applicable *only for industry coding and size valuation purposes*. It is not an indicator of receipts obtained by units or of the value of agricultural commodities produced by these units.

DEFINITIONS OF TERMS USED

13 The following are definitions of terms used in the tables of this publication:

- *agricultural establishment* is an establishment which is engaged *mainly* in agricultural activities; and
- *establishment with agricultural activity* is a land-based establishment which is engaged in agricultural activity, regardless of the unit's predominant activity.

CROPS, PASTURES AND HORTICULTURE

14 Statistics of areas and production of crops relate, in the main, to crops sown during the year ended 31 March. Statistics of perennial crops relate to the position as at 31 March and the production during the year ended on that date, or of fruit set by that date. For example, particulars of area, production and yield per hectare of wheat in Australia refer to wheat sown during the period from April to September and harvested between October and the following February, i.e. the 1996-97 season relates to the harvesting period October 1996 to February 1997.

EXPLANATORY NOTES *continued*

Statistics of other crops which in some States are harvested after 31 March (e.g. maize, potatoes, apples and pears) are collected by supplementary census returns and are included in the reference year in this publication.

LIVESTOCK SLAUGHTERING AND LIVESTOCK PRODUCTS

15 The statistics on slaughtering and meat production are based on a monthly collection from abattoirs and other major slaughtering establishments and include estimates of animals slaughtered on farms and by country butchers and other small slaughtering establishments. Care should be taken when using this information as the figures only relate to slaughtering for human consumption and do not include animals condemned or those killed for boiling down. Also, definitions of livestock categories may differ between States and within States, particularly with regard to calves.

WOOL

16 Wool receivals statistics show the amount of taxable wool received by brokers and dealers from wool producers. They exclude wool received by brokers on which wool tax has already been paid by other dealers (private buyers) or brokers. The information shown is on the basis of the State in which the wool has actually been received and does not necessarily reflect the production of wool in that State.

17 The wool estimates contained in table 43 are obtained from these major sources:

- (i) A monthly collection of National Council of Wool Selling Brokers of Australia in each State and incorporated in this publication with reference to the twelve months to 30 June. The data are compiled in terms of bales received into stores and converted to wool receivals in tonnes.
- (ii) A monthly ABS collection of other wool brokers and dealers in each State, also incorporated with reference to the twelve months to 30 June. Data are reported in tonnes, or converted to tonnes as required.

MILK

18 These statistics have been collected by the Australian Dairy Corporation (ADC).

POULTRY

19 Poultry slaughtering statistics have been compiled from returns supplied by commercial poultry slaughtering establishments.

BEEKEEPING

20 Beekeepers are included in this collection if they have a minimum EVAO of \$5,000, whether for beekeeping alone or in conjunction with other agricultural activities.

AGRICULTURAL FINANCE SURVEY

21 The financial estimates in this publication have been derived from estimates from the Agricultural Finance Survey (AFS). The survey aims to meet demands of users who require annual financial statistics on a consistent basis across all agricultural industries in each State and Australia.

EXPLANATORY NOTES *continued*

22 More detailed information including an outline of the reliability of the estimates and their standard errors is published in *Agricultural Industries Financial Statistics, Australia* (7507.0).

SCOPE AND COVERAGE OF THE AFS

23 The population of the AFS consisted of all economic units (management units) the principal activity of which resulted in them being classified within Sub-division 01 'Agriculture' of the ANZSIC and which had an EVAO of \$22,500 or more.

VALUE OF AGRICULTURAL COMMODITIES PRODUCED

24 This publication contains summary information on the value of agricultural commodities produced (VACP) compiled annually for all States and Australia. The summary information contains gross values of production for selected agricultural commodities. More detailed information is available in *Value of Agricultural Commodities Produced, Australia* (7503.0).

SCOPE AND COVERAGE OF VACP STATISTICS

25 The statistics are derived by multiplying quantity data by price (or unit value) data. The quantity data are collected in the agricultural censuses and other ABS collections with some information from external sources. All price information is obtained from non-ABS sources.

PRICE AND MARKETING COSTS DATA

26 The method of collection of relevant prices for, and the costs of marketing of agricultural commodities vary considerably between States and between commodities. Where a statutory authority handles marketing of the whole or portion of a product (e.g. Australian Wheat Board, Australian Barley Board) data are usually obtained from this source. Information is also obtained from marketing reports, wholesalers, brokers and auctioneers. For all commodities, values are in respect of production during the year (or season) irrespective of whether or when payments are made. For that portion of production not marketed, (e.g. hay grown on farm for own use, milk used in farm household, etc.) estimates are made from the best available information and, in general, are valued on a local value basis.

DEFINITION OF GROSS VALUE

27 Gross value of commodities produced is the value placed on recorded production at the wholesale prices realised in the market place.

OTHER FORMS OF RELEASE

28 The ABS also has more detailed agricultural statistics on microfiche and floppy disk. AgStats on floppy disk offers a wider range of data aggregated at smaller geographic areas than those generally available in printed publications, together with an easy-to-use interrogation facility.

29 Current publications produced by the ABS are listed in the *Catalogue of Publications and Products, Australia* (1101.0). The ABS also issues, on Tuesdays and Fridays, a *Publications Advice* (1105.0) which lists publications to be released in the next few days. The Catalogue and Publications Advice are available from any ABS office.

EXPLANATORY NOTES *continued*

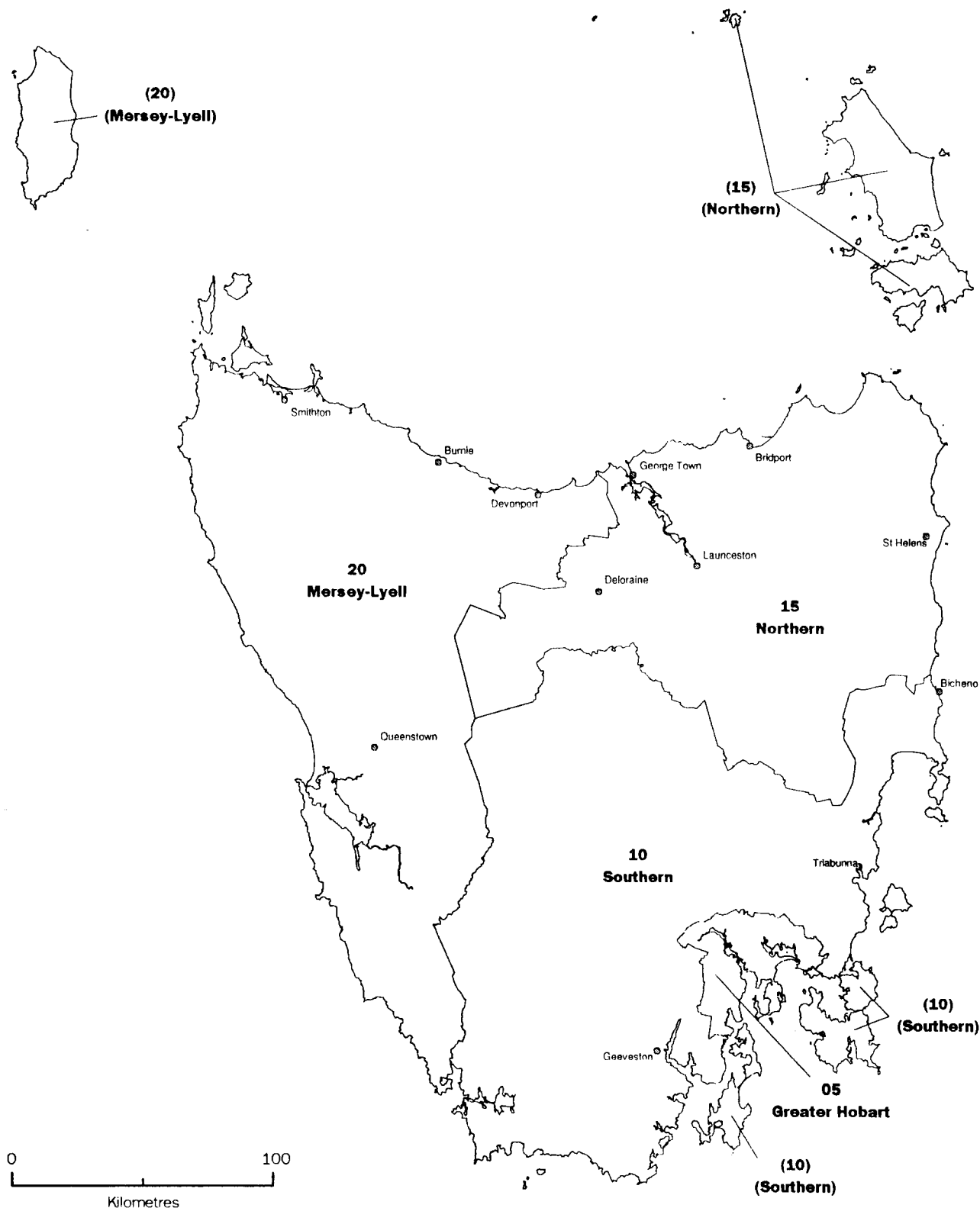
UNPUBLISHED STATISTICS

30 As well as the statistics in this and related publications, the ABS may have other unpublished data available. Enquires should be directed to James Plunkett on (03) 6222 5876.

31 The figures shown in this publication have been revised where necessary and as a consequence may not agree with similar data shown in previous publications.

32 Where the figures have been rounded, discrepancies may occur between sums of the component items and totals.

STATISTICAL DIVISIONS OF TASMANIA *from 1 July 1996*



SELF-HELP ACCESS TO STATISTICS

PHONE Call 1900 986 400 for the latest statistics on CPI, Labour Force, Earnings, National Accounts, Balance of Payments and other topics. (Call cost is 75c per minute)

INTERNET <http://www.abs.gov.au>

LIBRARY A range of ABS publications is available from public and tertiary libraries Australia wide. Contact your nearest library to determine whether it has the ABS statistics you require.

WHY NOT SUBSCRIBE?

PHONE +61 1300 366 323

FAX +61 3 9615 7848

CONTACTING THE ABS

ABS provides a range of services, including: a telephone inquiry service; information consultancy tailored to your needs; survey, sample and questionnaire design; survey evaluation and methodological reviews; and statistical training.

<i>INQUIRIES</i>	<i>By phone</i>	<i>By fax</i>
Canberra	02 6252 6627	02 6253 1404
Sydney	02 9268 4611	02 9268 4668
Melbourne	03 9615 7755	03 9615 7798
Brisbane	07 3222 6351	07 3222 8283
Perth	08 9360 5140	08 9360 5955
Adelaide	08 8237 7400	08 8237 7566
Hobart	03 6222 5800	03 6222 5995
Darwin	08 8943 2111	08 8981 1218

POST Client Services, ABS, PO Box 10, Belconnen, ACT 2616

EMAIL client.services@abs.gov.au



2711460007970

ISSN 1323-3122

RRP \$22.00