



2000-01

5220.0

AUSTRALIAN NATIONAL ACCOUNTS

# STATE ACCOUNTS

EMBARGO: 11.30AM (CANBERRA TIME) FRI 16 NOV 2001

## CONTENTS

	<i>page</i>
Notes .....	2
Analysis of results .....	3
 <b>TABLES</b>	
List of tables .....	8
Gross state product .....	11
Expenditure components of gross state product .....	18
Income components of gross state product .....	27
Household income .....	47
Agricultural income .....	57
 <b>ADDITIONAL INFORMATION</b>	
Explanatory notes .....	60

- For further information contact Carl Obst on Canberra 02 6252 6713 for income & consumption estimates, and Patricia Mahony on Canberra 02 6252 6711 for investment, trade & industry estimates.

## NOTES

**ABOUT THIS PUBLICATION** This publication contains State and Territory estimates of gross domestic product (referred to as gross state product (GSP)) and its components, in current price and chain volume terms, for the years 1992–93 to 2000–2001. Historical data are available electronically starting in 1989–90.

**REVISIONS IN THIS ISSUE** Estimates in this publication have been revised in accordance with revised annual benchmarks for Australia published in the 2000–2001 issue of *Australian System of National Accounts* (Cat. no. 5204.0). This year extensive revisions have been made to the Australian level estimates over the complete time series. Details of these revisions are described on page 6 in the Analysis of Results section in this publication. State distributions of national aggregates for recent years have also been revised using the latest available information.

**CHANGES IN THIS ISSUE** State estimates of 'international trade—exports of services' and 'international trade—imports of services' have been introduced in this edition. Chain volume estimates appear in Table 3 and current price estimates appear in Tables 6 to 14. See paragraphs 23 and 29 of the Explanatory Notes for further details. A consequence of their introduction is that the scope of the balancing item has been reduced.

**DATA VALUES AND ROUNDING** All values, unless otherwise indicated, are shown in Australian dollars rounded to the nearest million.

Where figures have been rounded, discrepancies may occur between the sums of the component items and totals.

**NEXT ISSUE** The 2001–02 issue of this publication is expected to be released in November 2002.



### ABBREVIATIONS

ABS Australian Bureau of Statistics  
GMI gross mixed income  
GOS gross operating surplus  
SFD state final demand  
SNA (93) System of National Accounts 1993

Dennis Trewin  
Australian Statistician

## ANALYSIS OF RESULTS

### GROWTH IN EXPERIMENTAL ESTIMATES OF GSP CHAIN VOLUME MEASURES

The estimates of gross state product (GSP) chain volume measures included in this publication are regarded as 'experimental'. The reasons are set out in the explanatory notes. Users should therefore exercise caution when using these estimates for economic analyses.

The table below compares annual rates of growth in experimental estimates of GSP chain volume measures and GSP chain volume measures per head of mean population over the nine years 1991–92 to 2000–01.

### AVERAGE ANNUAL COMPOUND GROWTH RATES OF GSP CHAIN VOLUME MEASURES, 1991–92 TO 2000–01 (a)

	<i>GSP chain volume measures</i>	<i>GSP chain volume measures per head of population</i>
	%	%
New South Wales	4.0	2.9
Victoria	4.2	3.3
Queensland	4.9	2.7
South Australia	2.6	2.3
Western Australia	3.9	2.3
Tasmania	1.4	1.4
Northern Territory	4.0	2.2
Australian Capital Territory	3.6	2.8
Australia	3.9	2.8

(a) Experimental series. See paragraphs 30 to 34 of Explanatory Notes.

Over the period 1991–92 to 2000–01, growth in GSP chain volume measures varied considerably between the States, with growth being strongest in Queensland and Victoria and weakest in Tasmania and South Australia. The dispersion of growth rates was less, but still significant, in terms of GSP chain volume measures per head of mean population.

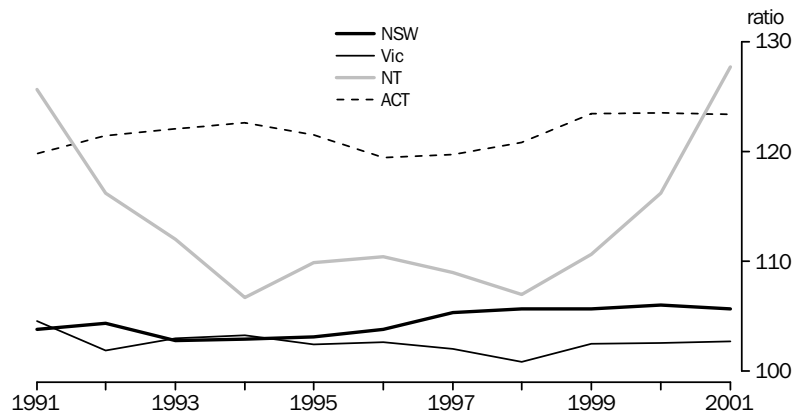
### GSP PER HEAD OF MEAN POPULATION

The graphs below show an index of GSP, in current prices, per head of mean population for each State and Territory divided by the Australian estimate for total gross domestic product (GDP) per head of mean population, for the period 1989–90 to 2000–01. It should be noted that GSP per head of mean population cannot be equated with the income of households in a particular State—see comments on gross household disposable income below.

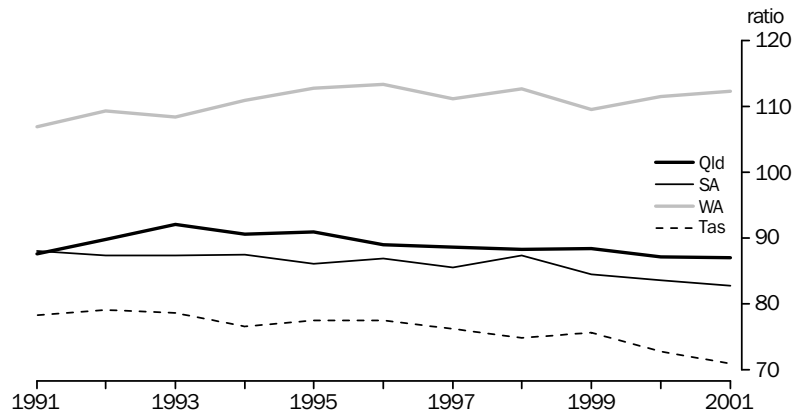
## ANALYSIS OF RESULTS *continued*

GSP PER HEAD OF MEAN  
POPULATION *continued*

GSP PER HEAD OF MEAN POPULATION: ratio (Australia = 100)



GSP PER HEAD OF MEAN POPULATION: ratio (Australia = 100)



GSP per head of mean population in 2000–01 was above the national average in New South Wales, Victoria, Western Australia, the Northern Territory and the Australian Capital Territory. The Australian Capital Territory had the highest level in each of the years from 1991–92 to 1999–2000, while the Northern Territory had the highest level in 1989–90, 1990–91 and in the latest year, 2000–01. GSP per head of mean population in Queensland, South Australia and Tasmania has not exceeded the national average during this period. Three States, Victoria, Western Australia and the Northern Territory showed an increase in this ratio in 2000–01.

INDUSTRY COMPOSITION  
OF TOTAL FACTOR  
INCOME

Individual industry contributions to total factor income for 2000–01 are shown below. In line with long term trends, there has been a shift from goods producing industries to service providing industries over the period 1989–90 to 2000–01.

The main industries contributing to the relative decline in goods producing industries have been: agriculture, forestry and fishing; manufacturing; and electricity, gas and water supply. Service industries, except for wholesale and retail trade, have increased in relative importance in most States.

## ANALYSIS OF RESULTS *continued*

### INDUSTRY COMPOSITION OF TOTAL FACTOR INCOME *continued*

### INDUSTRY CONTRIBUTION TO TOTAL FACTOR INCOME (a)—2000–01

	NSW	Vic	Qld	SA	WA	Tas	NT	ACT	Aust
	%	%	%	%	%	%	%	%	%
Agriculture, forestry and fishing	3	4	5	5	4	7	4	—	4
Mining	2	2	5	3	23	2	31	—	5
Manufacturing	13	16	10	15	9	15	4	2	13
Electricity, gas & water supply	2	3	2	3	3	6	2	3	3
Construction	6	5	6	5	6	5	3	6	6
Wholesale trade	5	5	5	4	4	3	2	2	5
Retail trade	5	5	7	6	5	6	4	5	5
Accommodation, cafes and restaurants	3	2	4	3	2	3	3	3	3
Transport and storage	5	5	6	5	5	5	4	3	5
Communication services	3	4	3	3	3	3	3	2	3
Finance & insurance	9	8	5	6	4	5	2	4	7
Property & business services	14	14	10	10	10	5	7	14	12
Government administration and defence	3	2	4	3	2	5	8	25	3
Education	4	5	5	5	3	5	5	6	4
Health and community services	6	6	6	7	6	9	6	6	6
Cultural and recreational services	2	2	2	2	1	1	2	3	2
Personal and other services	2	2	3	3	2	2	2	3	2
Ownership of dwellings	12	9	9	10	7	9	5	8	10
General government(b)	2	2	3	2	2	3	3	5	2
Total	100	100	100	100	100	100	100	100	100

— nil or rounded to zero (including null cells)

(a) Industries may not add to total due to rounding differences.

(b) State details for general government gross operating surplus by industry are not available.

### GROSS HOUSEHOLD DISPOSABLE INCOME

The analysis of GSP per head of mean population above concentrates on the level of economic production (GSP) and its growth in current price terms. It does not provide a measure of incomes received by residents of a particular State, because a proportion of income generated in the production process may be transferred to other States or overseas (and conversely income may be received from other States or overseas). Gross household disposable income per head of mean population in 2000–01 is shown below.

### GROSS HOUSEHOLD DISPOSABLE INCOME PER HEAD OF MEAN POPULATION—2000–01

	\$
New South Wales	25 147
Victoria	24 520
Queensland	21 186
South Australia	20 879
Western Australia	23 205
Tasmania	18 947
Northern Territory	24 642
Australian Capital Territory	31 405
Australia	23 698

Gross household disposable income per head of mean population was highest in the Australian Capital Territory and lowest in Tasmania. Differences between the States reflect differences, from State to State, in the impact of a range of factors including the average level of compensation of employees received per employee, the proportion of the population in employment, the age distribution of the population, and differences in

## ANALYSIS OF RESULTS *continued*

### GROSS HOUSEHOLD DISPOSABLE INCOME *continued*

the level of dwelling rent (including that imputed to owner occupiers). For example, a significant reason for the high level of gross household disposable income per head of mean population in the Australian Capital Territory compared with other States is that the labour force participation rate is much higher there than in the rest of Australia.

### REVISIONS TO ESTIMATES

Australian level estimates have been revised since the last issue of this publication to incorporate information from the annual supply and use tables and other sources which normally become available by this time each year, but in this edition the revisions are more extensive than usual. All of the annual supply and use tables, starting in 1994–95, have been recompiled to incorporate data from a number of important but infrequently conducted surveys and other sources, they include: the 1998–99 Retail Industry Survey, the 1998–99 Wholesale Industry Survey, the 1997–98 Household Expenditure Survey and the 1996 Census of Population and Housing. In addition, the opportunity has been taken to incorporate improved methodologies that have been developed over recent years. The revisions also reflect the addition of one more supply and use table (1999–2000) and the re-referencing of the chain volume estimates to 1999–2000.

The revisions to the Australian level data are reflected in the State estimates, but not uniformly in many cases.

The following are the key aspects of the 2000–01 historical revision:

- The annual supply and use tables from 1994–95 have been recompiled to allow for changes made to source data based on updated survey parameters. These changes have impacted primarily on the industry relativities. Although the level of GDP has only been revised down slightly the impact on the State estimates has been more variable.
- Revised data relating to the public sector have been incorporated to reflect revisions which had not previously been implemented in the national accounts due to the revision policy instituted with the introduction of the supply-use benchmarking approach.
- The latest detailed retail industry survey results have been incorporated to update measures of household final consumption expenditure (HFCE) by commodity and estimates of retail margins. There has been some noticeable reallocation between commodities, but total HFCE has not been altered significantly by the new survey data. However, HFCE has been revised upward following a revision to the estimate of cash purchases not within the scope of existing collections. The impact on the State estimates of HFCE has not been uniform. For example, the estimates for New South Wales have been revised up considerably, while those for Queensland have been revised down.
- Estimates of compensation of employees have been revised back to 1986–87 to account for updated labour force information. Revisions were made to account for updated information on the status of employment, multiple job holdings and to accommodate the effects of changes to the questionnaire.
- A new benchmark for 1998–99 alterations and additions to dwellings has been incorporated.

## ANALYSIS OF RESULTS *continued*

---

### REVISIONS TO ESTIMATES *continued*

- Revisions have been made to State estimates of capital formation and consumption of fixed capital for livestock. The upward revisions to livestock capital formation (and inventories) have been offset on the income side of the accounts by increased gross mixed income and gross operating surplus.

### CONCEPTS, SOURCES AND METHODS MANUAL

A new, and completely revised, issue of *Australian National Accounts: Concepts, Sources and Methods* (Cat. no. 5216.0) is available on the ABS website [www.abs.gov.au](http://www.abs.gov.au) (starting at the home page select: Statistics—Statistical Concepts Library—ABS concepts, sources, methods and statistical frameworks—5216.0). A paper edition of the manual is also available.

The manual gives an up-to-date and comprehensive description of the concepts, sources and methods used to compile Australia's national and State accounts, including the input-output tables, chain volume estimates, capital stock and productivity statistics.

## LIST OF TABLES

*page*

### GROSS STATE PRODUCT

<b>1</b>	Gross State Product, Chain Volume Measures . . . . .	11
<b>2</b>	Gross State Product per head of mean population, Chain Volume Measures . . . . .	12
<b>3</b>	Components of Gross State Product, Chain Volume Measures . . . . .	13
<b>4</b>	Gross State Product at Market Prices . . . . .	16
<b>5</b>	Gross State Product at Market Prices per head of mean population . . . . .	17

### EXPENDITURE COMPONENTS OF GROSS STATE PRODUCT

<b>6</b>	Expenditure Components of Gross State Product, New South Wales—Current Prices . . . . .	18
<b>7</b>	Expenditure Components of Gross State Product, Victoria—Current Prices . . . . .	19
<b>8</b>	Expenditure Components of Gross State Product, Queensland—Current Prices . . . . .	20
<b>9</b>	Expenditure Components of Gross State Product, South Australia—Current Prices . . . . .	21
<b>10</b>	Expenditure Components of Gross State Product, Western Australia—Current Prices . . . . .	22
<b>11</b>	Expenditure Components of Gross State Product, Tasmania—Current Prices . . . . .	23
<b>12</b>	Expenditure Components of Gross State Product, Northern Territory—Current Prices . . . . .	24
<b>13</b>	Expenditure Components of Gross State Product, Australian Capital Territory—Current Prices . . . . .	25
<b>14</b>	Expenditure Components of Gross Domestic Product, Australia—Current Prices . . . . .	26

### INCOME COMPONENTS OF GROSS STATE PRODUCT

<b>15</b>	Income Components of Gross State Product—Current Prices . . . . .	27
<b>16</b>	Total Factor Income by Industry and Principal Components, New South Wales—Current Prices . . . . .	29
<b>17</b>	Total Factor Income by Industry and Principal Components, Victoria—Current Prices . . . . .	31
<b>18</b>	Total Factor Income by Industry and Principal Components, Queensland—Current Prices . . . . .	33
<b>19</b>	Total Factor Income by Industry and Principal Components, South Australia—Current Prices . . . . .	35
<b>20</b>	Total Factor Income by Industry and Principal Components, Western Australia—Current Prices . . . . .	37
<b>21</b>	Total Factor Income by Industry and Principal Components, Tasmania—Current Prices . . . . .	39
<b>22</b>	Total Factor Income by Industry and Principal Components, Northern Territory—Current Prices . . . . .	41
<b>23</b>	Total Factor Income by Industry and Principal Components, Australian Capital Territory—Current Prices . . . . .	43
<b>24</b>	Total Factor Income by Industry and Principal Components, Australia—Current Prices . . . . .	45



## LIST OF TABLES *continued*

*page*

### HOUSEHOLD INCOME

<b>25</b>	Gross Household Income and Gross Household Disposable Income, Values and per head of mean population—Current Prices . . . . .	47
<b>26</b>	Household Income Account, New South Wales—Current Prices . . . . .	48
<b>27</b>	Household Income Account, Victoria—Current Prices . . . . .	49
<b>28</b>	Household Income Account, Queensland—Current Prices . . . . .	50
<b>29</b>	Household Income Account, South Australia—Current Prices . . . . .	51
<b>30</b>	Household Income Account, Western Australia—Current Prices . . . . .	52
<b>31</b>	Household Income Account, Tasmania—Current Prices . . . . .	53
<b>32</b>	Household Income Account, Northern Territory—Current Prices . . . . .	54
<b>33</b>	Household Income Account, Australian Capital Territory—Current Prices . . . . .	55
<b>34</b>	Household Income Account, Australia—Current Prices . . . . .	56

### AGRICULTURAL INCOME

<b>35</b>	Agricultural Income, Current Prices . . . . .	57
-----------	---	----



## GROSS STATE PRODUCT, Chain Volume Measures(a)

1992-93 1993-94 1994-95 1995-96 1996-97 1997-98 1998-99 1999-00 2000-01

## VALUES

New South Wales (\$m)	166 900	173 404	180 594	189 278	197 237	206 639	215 730	225 186	231 327
Victoria (\$m)	118 214	122 502	127 141	133 112	137 006	143 878	154 588	160 518	164 365
Queensland (\$m)	72 640	75 349	79 660	82 676	86 768	90 322	96 255	101 801	103 814
South Australia (\$m)	33 940	34 716	35 167	37 459	37 738	40 118	40 931	41 340	41 617
Western Australia (\$m)	49 433	52 156	56 029	58 762	60 662	64 211	66 609	68 933	68 089
Tasmania (\$m)	10 123	10 154	10 391	10 750	10 796	10 930	11 409	11 326	11 269
Northern Territory (\$m)	5 495	5 515	5 966	6 351	6 535	6 744	7 386	7 452	7 784
Australian Capital Territory (\$m)	9 965	10 208	10 624	10 756	10 752	11 343	12 165	12 656	13 087

**Australia (GDP) (\$m)**      **469 353**   **487 607**   **507 945**   **529 355**   **548 815**   **573 244**   **603 447**   **629 212**   **641 370**

## PERCENTAGE CHANGES FROM PREVIOUS YEAR

New South Wales (%)	2.5	3.9	4.1	4.8	4.2	4.8	4.4	4.4	2.7
Victoria (%)	4.3	3.6	3.8	4.7	2.9	5.0	7.4	3.8	2.4
Queensland (%)	7.1	3.7	5.7	3.8	4.9	4.1	6.6	5.8	2.0
South Australia (%)	2.9	2.3	1.3	6.5	0.7	6.3	2.0	1.0	0.7
Western Australia (%)	2.3	5.5	7.4	4.9	3.2	5.9	3.7	3.5	-1.2
Tasmania (%)	2.2	0.3	2.3	3.5	0.4	1.2	4.4	-0.7	-0.5
Northern Territory (%)	0.5	0.4	8.2	6.4	2.9	3.2	9.5	0.9	4.5
Australian Capital Territory (%)	4.5	2.4	4.1	1.2	—	5.5	7.2	4.0	3.4

**Australia (GDP) (%)**      **3.7**   **3.9**   **4.2**   **4.2**   **3.7**   **4.5**   **5.3**   **4.3**   **1.9**

## INDEX (1992-93 = 100.0)

New South Wales	100.0	103.9	108.2	113.4	118.2	123.8	129.3	134.9	138.6
Victoria	100.0	103.6	107.6	112.6	115.9	121.7	130.8	135.8	139.0
Queensland	100.0	103.7	109.7	113.8	119.5	124.3	132.5	140.1	142.9
South Australia	100.0	102.3	103.6	110.4	111.2	118.2	120.6	121.8	122.6
Western Australia	100.0	105.5	113.3	118.9	122.7	129.9	134.7	139.4	137.7
Tasmania	100.0	100.3	102.6	106.2	106.6	108.0	112.7	111.9	111.3
Northern Territory	100.0	100.4	108.6	115.6	118.9	122.7	134.4	135.6	141.7
Australian Capital Territory	100.0	102.4	106.6	107.9	107.9	113.8	122.1	127.0	131.3

**Australia (GDP)**      **100.0**   **103.9**   **108.2**   **112.8**   **116.9**   **122.1**   **128.6**   **134.1**   **136.6**

— nil or rounded to zero (including null cells)

(a) Experimental series. Users are cautioned these estimates are derived indirectly by calculating a deflator from the expenditure components of the State series concerned. Therefore, in general, the sum of the State estimates does not equal the estimates for Australia. It is emphasised that, at times, there may be movements that cannot be fully explained in the chain volume estimates of GSP through the use of this proxy deflator (see Technical Note on page vi of the 1993-94 issue of Australian National Accounts: State Accounts (Cat. no. 5220.0)).

Reference year for chain volume measures is 1999-2000.

## GROSS STATE PRODUCT PER HEAD OF MEAN POPULATION, Chain Volume Measures(a)

1992-93 1993-94 1994-95 1995-96 1996-97 1997-98 1998-99 1999-00 2000-01

## VALUES

New South Wales (\$m)	27 878	28 734	29 638	30 691	31 599	32 782	33 881	35 021	35 591
Victoria (\$m)	26 472	27 345	28 240	29 324	29 884	31 073	33 011	33 882	34 256
Queensland (\$m)	23 657	23 921	24 700	25 027	25 752	26 364	27 657	28 790	28 860
South Australia (\$m)	23 268	23 716	23 959	25 456	25 552	27 050	27 478	27 639	27 743
Western Australia (\$m)	29 629	30 858	32 606	33 582	34 028	35 411	36 111	36 828	35 878
Tasmania (\$m)	21 497	21 494	21 948	22 675	22 764	23 126	24 205	24 062	23 972
Northern Territory (\$m)	32 413	32 015	34 036	35 285	35 425	35 787	38 600	38 397	39 642
Australian Capital Territory (\$m)	33 543	34 015	35 042	35 107	34 846	36 873	39 435	40 808	41 904
<b>Australia (GDP) (\$m)</b>	<b>26 687</b>	<b>27 446</b>	<b>28 280</b>	<b>29 094</b>	<b>29 795</b>	<b>30 779</b>	<b>32 037</b>	<b>33 037</b>	<b>33 281</b>

## PERCENTAGE CHANGES FROM PREVIOUS YEAR

New South Wales (%)	1.6	3.1	3.1	3.6	3.0	3.7	3.4	3.4	1.6
Victoria (%)	3.7	3.3	3.3	3.8	1.9	4.0	6.2	2.6	1.1
Queensland (%)	4.5	1.1	3.3	1.3	2.9	2.4	4.9	4.1	0.2
South Australia (%)	2.4	1.9	1.0	6.2	0.4	5.9	1.6	0.6	0.4
Western Australia (%)	1.0	4.2	5.7	3.0	1.3	4.1	2.0	2.0	-2.6
Tasmania (%)	1.6	—	2.1	3.3	0.4	1.6	4.7	-0.6	-0.4
Northern Territory (%)	-1.0	-1.2	6.3	3.7	0.4	1.0	7.9	-0.5	3.2
Australian Capital Territory (%)	2.7	1.4	3.0	0.2	-0.7	5.8	6.9	3.5	2.7
<b>Australia (GDP) (%)</b>	<b>2.5</b>	<b>2.8</b>	<b>3.0</b>	<b>2.9</b>	<b>2.4</b>	<b>3.3</b>	<b>4.1</b>	<b>3.1</b>	<b>0.7</b>

## INDEX (1992-93 = 100.0)

New South Wales	100.0	103.1	106.3	110.1	113.3	117.6	121.5	125.6	127.7
Victoria	100.0	103.3	106.7	110.8	112.9	117.4	124.7	128.0	129.4
Queensland	100.0	101.1	104.4	105.8	108.9	111.4	116.9	121.7	122.0
South Australia	100.0	101.9	103.0	109.4	109.8	116.3	118.1	118.8	119.2
Western Australia	100.0	104.2	110.1	113.3	114.8	119.5	121.9	124.3	121.1
Tasmania	100.0	100.0	102.1	105.5	105.9	107.6	112.6	111.9	111.5
Northern Territory	100.0	98.8	105.0	108.9	109.3	110.4	119.1	118.5	122.3
Australian Capital Territory	100.0	101.4	104.5	104.7	103.9	109.9	117.6	121.7	124.9
<b>Australia (GDP)</b>	<b>100.0</b>	<b>102.8</b>	<b>106.0</b>	<b>109.0</b>	<b>111.6</b>	<b>115.3</b>	<b>120.0</b>	<b>123.8</b>	<b>124.7</b>

— nil or rounded to zero (including null cells)

- (a) Experimental series. Users are cautioned these estimates are derived indirectly by calculating a deflator from the expenditure components of the State series concerned. Therefore, in general, the sum of the State estimates does not equal the estimates for Australia. It is emphasised that, at times, there may be movements that cannot be fully explained in the chain volume estimates of GSP through the use of this proxy deflator (see Technical Note on page vi of the 1993-94 issue of Australian National Accounts: State Accounts (Cat. no. 5220.0)).
- Reference year for chain volume measures is 1999-2000.

## COMPONENTS OF GROSS STATE PRODUCT, Chain Volume Measures(a)

	1992-93	1993-94	1994-95	1995-96	1996-97	1997-98	1998-99	1999-00	2000-01
	\$m	\$m	\$m	\$m	\$m	\$m	\$m	\$m	\$m
NEW SOUTH WALES									
Government final consumption expenditure	30 638	31 113	32 356	33 128	33 275	34 389	36 026	37 476	38 389
Household final consumption expenditure	104 799	106 269	111 441	115 935	119 469	124 458	131 168	136 697	139 705
Private gross fixed capital formation	24 058	26 181	29 798	30 455	31 194	35 911	38 624	43 179	38 625
Public corporations gross fixed capital formation	4 318	3 907	4 446	4 199	3 237	3 495	3 429	4 524	3 667
General government gross fixed capital formation	3 843	4 109	4 404	3 909	4 395	4 232	4 490	5 031	4 946
State final demand	167 169	171 225	182 369	187 510	191 375	202 480	213 658	226 906	225 332
International trade—exports of goods	11 935	14 462	14 698	16 047	18 323	19 748	19 622	22 282	22 770
less International trade—imports of goods	21 561	23 175	28 183	30 551	33 267	36 588	40 448	47 927	48 736
International trade—exports of services	8 145	9 157	10 264	11 225	11 572	11 839	11 952	12 464	15 862
less International trade—imports of services	9 625	10 366	11 317	11 711	12 301	11 909	12 178	13 315	12 920
Balancing item(b)	10 320	11 172	12 900	16 492	20 888	20 643	22 913	24 776	29 020
<b>Gross state product(c)</b>	<b>166 900</b>	<b>173 404</b>	<b>180 594</b>	<b>189 278</b>	<b>197 237</b>	<b>206 639</b>	<b>215 730</b>	<b>225 186</b>	<b>231 327</b>
VICTORIA									
Government final consumption expenditure	22 388	21 856	22 553	23 517	23 595	23 895	25 007	26 511	27 367
Household final consumption expenditure	72 160	73 164	76 809	78 992	81 709	86 123	90 521	94 748	96 811
Private gross fixed capital formation	15 294	16 643	17 190	19 649	24 655	25 436	28 822	31 169	30 292
Public corporations gross fixed capital formation	1 866	2 421	3 052	2 524	1 053	2 051	2 629	2 312	1 925
General government gross fixed capital formation	2 088	2 130	2 359	2 176	2 312	2 139	2 354	2 993	2 978
State final demand	112 835	115 445	121 205	126 232	132 877	139 615	149 278	157 734	159 372
International trade—exports of goods	11 426	12 998	13 236	15 743	17 228	16 523	17 856	20 279	20 850
less International trade—imports of goods	18 147	20 271	23 778	24 457	26 799	29 420	30 875	33 717	32 889
International trade—exports of services	3 453	3 801	4 206	4 546	4 912	5 867	6 294	6 496	5 861
less International trade—imports of services	5 843	6 354	6 704	6 823	7 181	7 413	7 438	7 345	7 475
Balancing item(b)	14 678	16 990	19 254	17 989	16 039	18 802	19 552	17 072	18 646
<b>Gross state product(c)</b>	<b>118 214</b>	<b>122 502</b>	<b>127 141</b>	<b>133 112</b>	<b>137 006</b>	<b>143 878</b>	<b>154 588</b>	<b>160 518</b>	<b>164 365</b>
QUEENSLAND									
Government final consumption expenditure	14 383	14 693	14 974	15 994	16 381	17 261	18 285	18 686	19 832
Household final consumption expenditure	47 431	49 342	51 992	53 777	55 069	57 819	61 354	63 965	66 787
Private gross fixed capital formation	12 720	14 787	16 534	15 861	17 886	18 270	19 516	20 774	18 287
Public corporations gross fixed capital formation	2 094	1 565	2 530	2 322	2 696	2 218	3 116	2 873	2 804
General government gross fixed capital formation	2 517	2 385	2 463	2 773	3 126	3 299	3 493	4 358	4 480
State final demand	78 997	82 664	88 459	90 617	95 144	98 867	105 724	110 657	112 191
International trade—exports of goods	11 766	11 708	12 182	12 917	13 620	15 102	15 674	16 571	19 096
less International trade—imports of goods	7 101	7 525	8 497	8 654	9 661	10 541	11 371	12 749	12 111
International trade—exports of services	3 238	3 800	4 353	4 805	5 054	4 677	4 949	4 832	4 299
less International trade—imports of services	2 076	2 238	2 618	2 718	3 038	3 086	3 102	4 035	3 441
Balancing item(b)	-12 148	-12 958	-14 109	-14 183	-14 270	-14 712	-15 591	-13 474	-16 220
<b>Gross state product(c)</b>	<b>72 640</b>	<b>75 349</b>	<b>79 660</b>	<b>82 676</b>	<b>86 768</b>	<b>90 322</b>	<b>96 255</b>	<b>101 801</b>	<b>103 814</b>

(a) Reference year for chain volume measures is 1999-2000.

(b) Calculated as the residual of GSP less State final demand less international trade in exports of goods and services, plus international trade in imports of goods and services. The balancing item implicitly comprises changes in inventories, total net interstate trade and statistical discrepancy (E).

(c) Experimental series. Users are cautioned these estimates are derived indirectly by calculating a deflator from the expenditure components of the

State series concerned. Therefore, in general, the sum of the State estimates does not equal the estimates for Australia. It is emphasised that, at times, there may be movements that cannot be fully explained in the chain volume estimates of GSP through the use of this proxy deflator (see Technical Note on page vi of the 1993-94 issue of Australian National Accounts: State Accounts (Cat. No. 5220.0)).

COMPONENTS OF GROSS STATE PRODUCT, Chain Volume Measures(a) *continued*

	1992-93	1993-94	1994-95	1995-96	1996-97	1997-98	1998-99	1999-00	2000-01
	\$m	\$m	\$m	\$m	\$m	\$m	\$m	\$m	\$m
SOUTH AUSTRALIA									
Government final consumption expenditure	7 460	7 262	7 402	7 651	7 776	8 210	8 331	8 885	8 946
Household final consumption expenditure	21 351	21 901	23 099	23 947	24 043	25 033	25 816	26 549	27 512
Private gross fixed capital formation	4 417	4 366	5 288	4 930	5 710	6 862	6 127	10 011	7 976
Public corporations gross fixed capital formation	822	607	609	519	552	449	633	-2 374	-761
General government gross fixed capital formation	745	710	782	746	855	845	705	937	888
State final demand	34 871	34 894	37 276	37 862	39 051	41 521	41 729	44 009	44 562
International trade—exports of goods	4 197	4 422	4 103	4 608	5 433	4 942	5 558	5 990	7 356
less International trade—imports of goods	3 372	2 994	3 302	3 282	3 781	4 207	3 850	4 318	4 408
International trade—exports of services	611	575	612	686	730	705	675	961	1 910
less International trade—imports of services	888	816	877	856	938	950	961	1 111	1 122
Balancing item(b)	-1 829	-1 729	-3 058	-1 858	-3 002	-2 042	-2 377	-4 191	-6 681
<b>Gross state product(c)</b>	<b>33 940</b>	<b>34 716</b>	<b>35 167</b>	<b>37 459</b>	<b>37 738</b>	<b>40 118</b>	<b>40 931</b>	<b>41 340</b>	<b>41 617</b>
WESTERN AUSTRALIA									
Government final consumption expenditure	8 239	8 362	8 532	9 022	9 226	9 931	10 295	10 768	11 022
Household final consumption expenditure	26 356	27 655	28 875	30 071	30 787	32 286	33 480	34 421	35 217
Private gross fixed capital formation	10 214	11 085	12 596	13 247	13 747	19 303	15 309	14 265	12 224
Public corporations gross fixed capital formation	1 254	996	892	1 287	1 619	-577	1 290	1 411	1 410
General government gross fixed capital formation	965	860	923	1 086	1 058	1 249	1 192	1 398	1 762
State final demand	46 970	48 867	51 746	54 704	56 439	61 991	61 545	62 263	61 635
International trade—exports of goods	18 421	18 393	19 302	21 206	22 367	24 963	25 171	27 245	26 828
less International trade—imports of goods	4 886	4 762	5 769	6 181	7 126	8 815	9 157	9 518	8 148
International trade—exports of services	1 685	1 931	2 296	2 437	2 431	2 154	2 160	2 286	2 011
less International trade—imports of services	1 725	1 732	1 983	2 095	2 269	2 609	2 544	2 512	2 613
Balancing item(b)	-11 233	-10 801	-9 715	-11 462	-11 270	-13 547	-10 652	-10 831	-11 624
<b>Gross state product(c)</b>	<b>49 433</b>	<b>52 156</b>	<b>56 029</b>	<b>58 762</b>	<b>60 662</b>	<b>64 211</b>	<b>66 609</b>	<b>68 933</b>	<b>68 089</b>
TASMANIA									
Government final consumption expenditure	2 276	2 285	2 354	2 464	2 526	2 569	2 767	2 839	2 845
Household final consumption expenditure	6 748	6 933	7 065	7 241	7 375	7 652	7 786	8 005	8 142
Private gross fixed capital formation	1 275	1 301	1 550	1 431	1 580	1 502	1 261	1 376	1 366
Public corporations gross fixed capital formation	267	391	251	292	281	275	286	261	230
General government gross fixed capital formation	268	232	245	279	269	243	245	257	245
State final demand	10 834	11 139	11 484	11 715	12 048	12 257	12 342	12 738	12 827
International trade—exports of goods	1 866	1 921	1 779	1 758	1 959	2 347	2 195	2 133	2 205
less International trade—imports of goods	374	496	358	349	428	386	403	439	459
International trade—exports of services	118	123	148	160	161	147	125	192	307
less International trade—imports of services	133	131	143	149	171	175	157	190	163
Balancing item(b)	-2 241	-2 435	-2 556	-2 439	-2 798	-3 252	-2 697	-3 108	-3 448
<b>Gross state product(c)</b>	<b>10 123</b>	<b>10 154</b>	<b>10 391</b>	<b>10 750</b>	<b>10 796</b>	<b>10 930</b>	<b>11 409</b>	<b>11 326</b>	<b>11 269</b>

(a) Reference year for chain volume measures is 1999-2000.

(b) Calculated as the residual of GSP less State final demand less international trade in exports of goods and services, plus international trade in imports of goods and services. The balancing item implicitly comprises changes in inventories, total net interstate trade and statistical discrepancy (E).

(c) Experimental series. Users are cautioned these estimates are derived indirectly by calculating a deflator from the expenditure components of the

State series concerned. Therefore, in general, the sum of the State estimates does not equal the estimates for Australia. It is emphasised that, at times, there may be movements that cannot be fully explained in the chain volume estimates of GSP through the use of this proxy deflator (see Technical Note on page vi of the 1993-94 issue of Australian National Accounts: State Accounts (Cat. No. 5220.0)).

COMPONENTS OF GROSS STATE PRODUCT, Chain Volume Measures(a) *continued*

	1992-93	1993-94	1994-95	1995-96	1996-97	1997-98	1998-99	1999-00	2000-01
	\$m	\$m	\$m	\$m	\$m	\$m	\$m	\$m	\$m
NORTHERN TERRITORY									
Government final consumption expenditure	1 942	2 001	2 083	2 296	2 281	2 506	2 666	2 848	2 980
Household final consumption expenditure	2 469	2 459	2 638	2 843	2 778	2 984	3 137	3 317	3 370
Private gross fixed capital formation	822	1 077	1 100	1 340	1 255	1 497	2 544	1 541	1 218
Public corporations gross fixed capital formation	92	82	131	83	84	73	20	120	84
General government gross fixed capital formation	175	178	234	239	278	324	196	206	163
State final demand	5 501	5 795	6 196	6 814	6 684	7 399	8 590	8 032	7 814
International trade—exports of goods	1 793	1 640	1 613	1 714	1 907	1 900	1 869	2 752	3 466
less International trade—imports of goods	296	312	381	413	447	697	503	1 400	532
International trade—exports of services	240	299	321	310	290	293	303	374	328
less International trade—imports of services	156	175	189	194	212	224	239	236	246
Balancing item(b)	-1 645	-1 813	-1 719	-2 013	-1 800	-2 077	-2 827	-2 069	-3 046
<b>Gross state product(c)</b>	<b>5 495</b>	<b>5 515</b>	<b>5 966</b>	<b>6 351</b>	<b>6 535</b>	<b>6 744</b>	<b>7 386</b>	<b>7 452</b>	<b>7 784</b>
AUSTRALIAN CAPITAL TERRITORY									
Government final consumption expenditure	6 581	7 165	7 579	7 760	8 331	8 528	8 805	10 023	10 090
Household final consumption expenditure	5 366	5 592	5 768	5 882	6 037	6 360	6 632	7 010	7 386
Private gross fixed capital formation	1 178	1 208	1 005	907	979	1 377	1 425	1 584	1 427
Public corporations gross fixed capital formation	149	135	166	168	147	122	112	150	101
General government gross fixed capital formation	622	666	682	646	651	301	445	697	753
State final demand	13 978	14 823	15 207	15 342	16 105	16 670	17 433	19 464	19 757
International trade—exports of goods	8	15	24	21	13	21	32	33	20
less International trade—imports of goods	11	13	7	6	9	8	10	9	5
International trade—exports of services	417	465	478	502	531	552	562	713	616
less International trade—imports of services	863	810	803	872	846	888	871	969	811
Balancing item(b)	-3 528	-4 242	-4 242	-4 197	-5 017	-4 951	-4 896	-6 576	-6 490
<b>Gross state product(c)</b>	<b>9 965</b>	<b>10 208</b>	<b>10 624</b>	<b>10 756</b>	<b>10 752</b>	<b>11 343</b>	<b>12 165</b>	<b>12 656</b>	<b>13 087</b>
AUSTRALIA									
Government final consumption expenditure	94 269	95 000	98 092	102 065	103 536	107 445	112 233	118 037	121 470
Household final consumption expenditure	284 980	291 581	305 881	317 505	326 712	342 374	359 900	374 712	384 933
Private gross fixed capital formation	69 978	76 647	85 061	87 820	97 006	110 159	113 628	123 899	111 421
Public corporations gross fixed capital formation	10 862	10 105	12 077	11 394	9 669	8 106	11 516	9 277	9 461
General government gross fixed capital formation	11 223	11 271	12 092	11 851	12 945	12 632	13 120	15 878	16 214
Domestic final demand	469 862	483 446	512 546	530 053	549 654	580 599	610 301	641 802	643 499
International trade—exports of goods	61 412	65 558	66 937	74 015	80 850	85 546	87 976	97 285	102 591
less International trade—imports of goods	55 747	59 548	70 275	73 893	81 519	90 662	96 617	110 077	107 289
International trade—exports of services	17 900	20 150	22 683	24 677	25 687	26 232	27 019	28 316	31 195
less International trade—imports of services	21 275	22 594	24 612	25 395	26 948	27 252	27 490	29 713	28 792
Balancing item(d)	-843	-175	937	3 463	-366	-377	2 608	1 598	431
<b>Gross domestic product</b>	<b>469 353</b>	<b>487 607</b>	<b>507 945</b>	<b>529 355</b>	<b>548 815</b>	<b>573 244</b>	<b>603 447</b>	<b>629 212</b>	<b>641 370</b>

(a) Reference year for chain volume measures is 1999-2000.

(b) Calculated as the residual of GSP less State final demand less international trade in exports of goods and services, plus international trade in imports of goods and services. The balancing item implicitly comprises changes in inventories, total net interstate trade and statistical discrepancy (E).

(c) Experimental series. Users are cautioned these estimates are derived indirectly by calculating a deflator from the expenditure components of the State series concerned. Therefore, in general, the sum of the State estimates does not equal the estimates for Australia. It is emphasised that,

at times, there may be movements that cannot be fully explained in the chain volume estimates of GSP through the use of this proxy deflator (see Technical Note on page vi of the 1993-94 issue of Australian National Accounts: State Accounts (Cat. No. 5220.0)).

(d) Calculated as the residual of GDP less domestic final demand less international trade in exports of goods and services, plus international trade in imports of goods and services. The balancing item implicitly comprises changes in inventories and statistical discrepancy (E).

## GROSS STATE PRODUCT AT CURRENT PRICES

1992-93 1993-94 1994-95 1995-96 1996-97 1997-98 1998-99 1999-00 2000-01

## VALUES

New South Wales (\$m)	148 920	156 153	164 942	176 892	189 166	200 732	211 342	225 186	238 759
Victoria (\$m)	111 342	116 270	121 006	128 770	134 585	140 771	150 754	160 518	171 308
Queensland (\$m)	68 471	71 760	76 966	81 215	85 927	91 189	96 697	101 801	108 936
South Australia (\$m)	30 861	32 188	33 195	35 366	36 359	39 056	39 529	41 340	43 194
Western Australia (\$m)	43 769	47 140	50 881	54 821	57 036	61 536	63 448	68 933	74 120
Tasmania (\$m)	8 968	9 099	9 634	10 156	10 401	10 666	11 206	11 326	11 593
Northern Territory (\$m)	4 597	4 620	5 056	5 494	5 785	6 075	6 652	7 452	8 719
Australian Capital Territory (\$m)	8 778	9 250	9 668	10 114	10 627	11 204	11 964	12 656	13 401
<b>Australia (GDP) (\$m)</b>	<b>425 706</b>	<b>446 480</b>	<b>471 348</b>	<b>502 828</b>	<b>529 886</b>	<b>561 229</b>	<b>591 592</b>	<b>629 212</b>	<b>670 030</b>

## RATIO (AUSTRALIA = 100.0)

New South Wales	35.0	35.0	35.0	35.2	35.7	35.8	35.7	35.8	35.6
Victoria	26.2	26.0	25.7	25.6	25.4	25.1	25.5	25.5	25.6
Queensland	16.1	16.1	16.3	16.2	16.2	16.2	16.3	16.2	16.3
South Australia	7.2	7.2	7.0	7.0	6.9	7.0	6.7	6.6	6.4
Western Australia	10.3	10.6	10.8	10.9	10.8	11.0	10.7	11.0	11.1
Tasmania	2.1	2.0	2.0	2.0	2.0	1.9	1.9	1.8	1.7
Northern Territory	1.1	1.0	1.1	1.1	1.1	1.1	1.1	1.2	1.3
Australian Capital Territory	2.1	2.1	2.1	2.0	2.0	2.0	2.0	2.0	2.0
<b>Australia (GDP)</b>	<b>100.0</b>	<b>100.0</b>	<b>100.0</b>	<b>100.0</b>	<b>100.0</b>	<b>100.0</b>	<b>100.0</b>	<b>100.0</b>	<b>100.0</b>

## PERCENTAGE CHANGES FROM PREVIOUS YEAR

New South Wales (%)	3.0	4.9	5.6	7.2	6.9	6.1	5.3	6.6	6.0
Victoria (%)	5.4	4.4	4.1	6.4	4.5	4.6	7.1	6.5	6.7
Queensland (%)	9.0	4.8	7.3	5.5	5.8	6.1	6.0	5.3	7.0
South Australia (%)	4.2	4.3	3.1	6.5	2.8	7.4	1.2	4.6	4.5
Western Australia (%)	4.0	7.7	7.9	7.7	4.0	7.9	3.1	8.6	7.5
Tasmania (%)	3.6	1.5	5.9	5.4	2.4	2.5	5.1	1.1	2.4
Northern Territory (%)	1.4	0.5	9.4	8.7	5.3	5.0	9.5	12.0	17.0
Australian Capital Territory (%)	6.1	5.4	4.5	4.6	5.1	5.4	6.8	5.8	5.9
<b>Australia (GDP) (%)</b>	<b>4.8</b>	<b>4.9</b>	<b>5.6</b>	<b>6.7</b>	<b>5.4</b>	<b>5.9</b>	<b>5.4</b>	<b>6.4</b>	<b>6.5</b>



## GROSS STATE PRODUCT AT CURRENT PRICES PER HEAD OF MEAN POPULATION

1992-93 1993-94 1994-95 1995-96 1996-97 1997-98 1998-99 1999-00 2000-01

## VALUES

New South Wales (\$)	24 875	25 875	27 070	28 683	30 306	31 845	33 192	35 021	36 735
Victoria (\$)	24 933	25 954	26 878	28 367	29 356	30 402	32 192	33 882	35 703
Queensland (\$)	22 300	22 782	23 865	24 585	25 503	26 617	27 784	28 790	30 284
South Australia (\$)	21 157	21 989	22 616	24 034	24 618	26 334	26 537	27 639	28 795
Western Australia (\$)	26 234	27 891	29 611	31 330	31 994	33 936	34 397	36 828	39 056
Tasmania (\$)	19 044	19 260	20 348	21 422	21 932	22 566	23 774	24 062	24 661
Northern Territory (\$)	27 118	26 819	28 844	30 526	31 360	32 240	34 763	38 397	44 401
Australian Capital Territory (\$)	29 548	30 822	31 889	33 010	34 442	36 422	38 783	40 808	42 910
<b>Australia (GDP) (\$)</b>	<b>24 205</b>	<b>25 131</b>	<b>26 242</b>	<b>27 636</b>	<b>28 767</b>	<b>30 134</b>	<b>31 408</b>	<b>33 037</b>	<b>34 768</b>

## RATIO (AUSTRALIA = 100.0)

New South Wales	102.8	103.0	103.2	103.8	105.3	105.7	105.7	106.0	105.7
Victoria	103.0	103.3	102.4	102.6	102.0	100.9	102.5	102.6	102.7
Queensland	92.1	90.7	90.9	89.0	88.7	88.3	88.5	87.1	87.1
South Australia	87.4	87.5	86.2	87.0	85.6	87.4	84.5	83.7	82.8
Western Australia	108.4	111.0	112.8	113.4	111.2	112.6	109.5	111.5	112.3
Tasmania	78.7	76.6	77.5	77.5	76.2	74.9	75.7	72.8	70.9
Northern Territory	112.0	106.7	109.9	110.5	109.0	107.0	110.7	116.2	127.7
Australian Capital Territory	122.1	122.6	121.5	119.4	119.7	120.9	123.5	123.5	123.4
<b>Australia (GDP)</b>	<b>100.0</b>	<b>100.0</b>	<b>100.0</b>	<b>100.0</b>	<b>100.0</b>	<b>100.0</b>	<b>100.0</b>	<b>100.0</b>	<b>100.0</b>

## PERCENTAGE CHANGES FROM PREVIOUS YEAR

New South Wales (%)	2.1	4.0	4.6	6.0	5.7	5.1	4.2	5.5	4.9
Victoria (%)	4.8	4.1	3.6	5.5	3.5	3.6	5.9	5.3	5.4
Queensland (%)	6.4	2.2	4.8	3.0	3.7	4.4	4.4	3.6	5.2
South Australia (%)	3.7	3.9	2.9	6.3	2.4	7.0	0.8	4.2	4.2
Western Australia (%)	2.7	6.3	6.2	5.8	2.1	6.1	1.4	7.1	6.0
Tasmania (%)	3.0	1.1	5.6	5.3	2.4	2.9	5.3	1.2	2.5
Northern Territory (%)	-0.1	-1.1	7.5	5.8	2.7	2.8	7.8	10.5	15.6
Australian Capital Territory (%)	4.2	4.3	3.5	3.5	4.3	5.7	6.5	5.2	5.1
<b>Australia (GDP) (%)</b>	<b>3.7</b>	<b>3.8</b>	<b>4.4</b>	<b>5.3</b>	<b>4.1</b>	<b>4.8</b>	<b>4.2</b>	<b>5.2</b>	<b>5.2</b>

# EXPENDITURE COMPONENTS OF GROSS STATE PRODUCT, New South Wales—Current Prices

	1992-93	1993-94	1994-95	1995-96	1996-97	1997-98	1998-99	1999-00	2000-01
	\$m	\$m	\$m	\$m	\$m	\$m	\$m	\$m	\$m
<b>Final consumption expenditure</b>									
General government									
National	11 111	11 208	11 998	11 680	11 201	12 121	12 371	14 203	14 522
State and local	16 040	16 236	17 316	18 503	19 603	20 184	22 602	23 273	24 760
<i>Total general government final consumption expenditure</i>	27 151	27 444	29 314	30 183	30 804	32 304	34 974	37 476	39 282
Households									
Food	10 033	10 093	10 564	11 281	11 429	12 123	12 432	12 719	13 320
Alcoholic beverages and tobacco	3 698	3 534	3 543	3 948	4 253	4 509	4 802	5 293	6 115
Clothing and footwear	4 157	4 171	4 313	4 669	4 801	4 902	5 250	5 593	5 551
Housing, water, electricity, gas and other fuels	20 935	21 777	22 886	24 470	26 072	27 898	29 924	31 993	34 384
Furnishings and other household equipment	5 385	5 631	6 107	6 354	6 463	6 325	6 250	6 944	7 138
Health	3 669	3 861	3 994	4 026	4 028	3 994	4 480	4 991	5 630
Transport	11 389	11 670	12 845	13 449	14 091	15 077	15 639	16 355	17 635
Communications	1 565	1 731	1 928	2 207	2 445	2 645	2 906	3 098	3 615
Recreation and culture	10 383	10 868	11 674	12 903	13 739	14 687	15 354	16 289	17 718
Education services	1 653	1 728	1 843	1 974	2 196	2 449	2 651	2 814	2 999
Hotels, cafes and restaurants	6 178	6 724	7 611	8 614	8 612	9 494	11 291	11 779	12 936
Miscellaneous goods and services	12 899	12 779	13 348	14 283	15 489	16 597	17 919	18 792	19 973
Net expenditure interstate	29	33	34	37	38	34	35	38	-161
<i>Total household final consumption expenditure</i>	91 974	94 599	100 690	108 214	113 656	120 735	128 933	136 697	146 855
<i>Total final consumption expenditure</i>	119 125	122 043	130 004	138 397	144 460	153 039	163 907	174 173	186 137
<b>Gross fixed capital formation</b>									
Private									
Dwellings	7 217	7 890	8 793	8 390	8 289	10 054	11 470	12 885	10 278
Other buildings and structures	3 668	3 536	4 434	5 508	5 698	6 462	7 182	7 319	5 509
Machinery and equipment	8 930	10 387	11 990	12 298	11 641	13 494	13 434	15 128	15 654
Livestock	517	558	539	330	322	266	284	341	404
Intangible fixed assets	1 651	1 715	1 762	1 762	2 193	2 593	3 214	3 829	4 254
Ownership transfer costs	1 724	2 100	2 111	2 068	2 433	2 774	2 863	3 677	3 502
<i>Total private gross fixed capital formation</i>	23 707	26 186	29 629	30 356	30 576	35 643	38 447	43 179	39 601
Public									
Public corporations									
Commonwealth	1 503	1 278	1 640	1 737	1 722	1 375	1 531	1 722	1 258
State and local	2 890	2 687	2 769	2 511	1 493	2 133	1 875	2 802	2 359
<i>Total public corporations gross fixed capital formation</i>	4 393	3 965	4 409	4 248	3 216	3 508	3 407	4 524	3 617
General government									
National	1 215	1 214	1 295	1 144	1 086	867	910	1 233	1 337
State and local	2 731	2 977	3 148	2 809	3 243	3 316	3 648	3 798	3 567
<i>Total general government gross fixed capital formation</i>	3 947	4 192	4 444	3 953	4 329	4 183	4 557	5 031	4 904
<i>Total public gross fixed capital formation</i>	8 340	8 157	8 853	8 201	7 545	7 691	7 964	9 555	8 520
<i>Total gross fixed capital formation</i>	32 046	34 342	38 482	38 557	38 121	43 334	46 411	52 734	48 121
<b>State final demand</b>	151 172	156 386	168 486	176 954	182 581	196 373	210 317	226 906	234 258
International trade—exports of goods	13 679	16 040	16 491	18 111	19 137	21 739	20 262	22 282	25 462
less International trade—imports of goods	26 437	28 495	33 298	34 917	34 227	38 481	42 142	47 927	52 515
International trade—exports of services	7 316	8 380	9 240	10 385	10 873	11 351	11 597	12 464	16 660
less International trade—imports of services	8 593	9 332	10 191	10 674	10 950	11 506	12 407	13 315	14 450
Balancing item(a)	11 784	13 174	14 214	17 033	21 752	21 255	23 715	24 776	29 344
<b>Gross state product</b>	<b>148 920</b>	<b>156 153</b>	<b>164 942</b>	<b>176 892</b>	<b>189 166</b>	<b>200 732</b>	<b>211 342</b>	<b>225 186</b>	<b>238 759</b>

(a) Calculated as the residual of GSP less State final demand less international trade in exports of goods and services, plus international trade in imports of goods and services. The balancing item implicitly

comprises changes in inventories, total net interstate trade and statistical discrepancy (E).

## EXPENDITURE COMPONENTS OF GROSS STATE PRODUCT, Victoria—Current Prices

	1992-93	1993-94	1994-95	1995-96	1996-97	1997-98	1998-99	1999-00	2000-01
	\$m	\$m	\$m	\$m	\$m	\$m	\$m	\$m	\$m
<b>Final consumption expenditure</b>									
General government									
National	7 863	7 850	8 010	8 639	8 310	8 454	8 978	10 503	10 672
State and local	13 060	12 498	12 595	13 182	13 832	13 872	14 785	16 008	17 865
<i>Total general government final consumption expenditure</i>	20 924	20 349	20 605	21 822	22 142	22 326	23 763	26 511	28 536
Households									
Food	7 269	7 366	7 746	8 264	8 629	8 971	9 609	10 112	10 762
Alcoholic beverages and tobacco	2 473	2 580	2 662	2 993	3 090	3 208	3 484	3 737	4 218
Clothing and footwear	3 117	2 963	2 926	2 903	2 904	3 207	3 721	4 187	3 992
Housing, water, electricity, gas and other fuels	13 486	13 896	14 419	15 058	15 952	17 036	17 717	18 754	20 105
Furnishings and other household equipment	3 790	3 844	3 924	4 119	4 428	4 659	4 844	5 242	5 325
Health	3 391	3 675	3 767	3 853	3 924	3 914	4 259	4 572	5 583
Transport	7 873	8 144	8 755	9 271	9 735	10 446	10 960	11 284	12 591
Communications	1 152	1 281	1 422	1 610	1 794	1 934	2 123	2 266	2 630
Recreation and culture	6 584	7 291	8 625	9 502	10 135	10 932	11 566	12 113	12 345
Education services	1 527	1 613	1 674	1 814	1 994	2 220	2 413	2 540	2 724
Hotels, cafes and restaurants	4 078	4 212	4 550	4 469	4 416	4 585	5 242	6 107	6 209
Miscellaneous goods and services	9 285	9 101	9 479	9 907	10 657	12 312	12 344	12 838	13 626
Net expenditure interstate	811	825	891	985	1 067	1 032	968	994	1 094
<i>Total household final consumption expenditure</i>	64 837	66 790	70 840	74 748	78 725	84 457	89 250	94 748	101 205
<i>Total final consumption expenditure</i>	85 761	87 139	91 445	96 570	100 867	106 783	113 013	121 259	129 741
<b>Gross fixed capital formation</b>									
Private									
Dwellings	4 071	4 819	5 046	4 676	5 018	6 504	7 304	9 653	9 763
Other buildings and structures	2 517	2 468	2 176	3 226	4 753	4 408	5 827	5 054	4 954
Machinery and equipment	6 514	7 101	7 581	9 422	11 396	10 374	11 092	11 130	11 069
Livestock	442	490	462	329	426	407	417	479	650
Intangible fixed assets	1 160	1 274	1 271	1 285	1 550	1 825	2 265	2 740	3 043
Ownership transfer costs	1 025	1 258	1 200	1 482	1 539	1 807	1 903	2 112	2 129
<i>Total private gross fixed capital formation</i>	15 728	17 410	17 737	20 420	24 681	25 326	28 809	31 168	31 609
Public									
Public corporations									
Commonwealth	1 117	945	1 209	1 275	1 262	1 007	1 123	1 265	924
State and local	653	1 432	1 787	1 203	-265	1 037	1 511	1 047	991
<i>Total public corporations gross fixed capital formation</i>	1 770	2 377	2 996	2 478	997	2 044	2 635	2 312	1 915
General government									
National	806	958	863	893	814	725	693	907	990
State and local	1 536	1 417	1 726	1 479	1 630	1 542	1 770	2 086	1 983
<i>Total general government gross fixed capital formation</i>	2 342	2 375	2 589	2 372	2 444	2 267	2 464	2 993	2 973
<i>Total public gross fixed capital formation</i>	4 112	4 752	5 585	4 851	3 442	4 311	5 098	5 305	4 888
<i>Total gross fixed capital formation</i>	19 841	22 162	23 322	25 271	28 123	29 637	33 907	36 474	36 497
<b>State final demand</b>	105 601	109 300	114 767	121 840	128 990	136 420	146 920	157 733	166 238
International trade—exports of goods	11 620	13 158	13 884	16 524	17 003	16 955	17 639	20 279	23 767
less International trade—imports of goods	18 147	20 769	23 966	24 664	25 092	28 850	31 015	33 717	36 486
International trade—exports of services	3 106	3 512	3 791	4 217	4 627	5 642	6 105	6 496	6 173
less International trade—imports of services	5 241	5 768	6 072	6 258	6 414	7 173	7 582	7 345	8 381
Balancing item(a)	14 402	16 836	18 601	17 111	15 471	17 778	18 687	17 073	19 997
<b>Gross state product</b>	<b>111 342</b>	<b>116 270</b>	<b>121 006</b>	<b>128 770</b>	<b>134 585</b>	<b>140 771</b>	<b>150 754</b>	<b>160 518</b>	<b>171 308</b>

(a) Calculated as the residual of GSP less State final demand less international trade in exports of goods and services, plus international trade in imports of goods and services. The balancing item implicitly

comprises changes in inventories, total net interstate trade and statistical discrepancy (E).

## EXPENDITURE COMPONENTS OF GROSS STATE PRODUCT, Queensland—Current Prices

	1992-93	1993-94	1994-95	1995-96	1996-97	1997-98	1998-99	1999-00	2000-01
	\$m	\$m	\$m	\$m	\$m	\$m	\$m	\$m	\$m
<b>Final consumption expenditure</b>									
General government									
National	4 686	4 959	5 031	5 475	5 653	6 005	6 265	7 103	7 643
State and local	7 487	7 693	8 143	9 113	9 678	10 604	11 890	11 583	13 217
<i>Total general government final consumption expenditure</i>	12 174	12 651	13 173	14 588	15 331	16 609	18 155	18 686	20 860
Households									
Food	5 363	5 464	5 984	6 462	6 500	6 678	7 091	7 462	8 291
Alcoholic beverages and tobacco	1 807	1 863	1 931	2 046	2 209	2 317	2 420	2 566	2 961
Clothing and footwear	2 004	2 109	2 256	2 223	2 199	2 434	2 647	2 500	2 655
Housing, water, electricity, gas and other fuels	8 366	8 964	9 549	10 111	10 610	11 199	11 664	12 219	12 933
Furnishings and other household equipment	2 886	3 087	3 202	3 132	3 117	3 152	3 474	3 752	3 999
Health	1 810	1 948	2 140	2 345	2 563	2 582	2 771	2 961	3 359
Transport	5 459	5 663	6 128	6 472	6 727	7 154	7 359	7 472	8 103
Communications	812	912	1 015	1 162	1 287	1 391	1 528	1 629	1 893
Recreation and culture	4 739	5 385	5 930	6 459	6 431	7 040	7 756	8 229	8 935
Education services	742	825	902	1 004	1 139	1 266	1 382	1 461	1 564
Hotels, cafes and restaurants	3 374	3 636	3 958	4 151	4 314	4 679	4 827	5 382	5 896
Miscellaneous goods and services	6 122	6 267	6 496	6 945	7 577	8 259	8 898	9 296	9 826
Net expenditure interstate	-849	-881	-945	-1 031	-1 101	-1 044	-947	-963	-913
<i>Total household final consumption expenditure</i>	42 636	45 242	48 546	51 480	53 571	57 108	60 871	63 965	69 503
<i>Total final consumption expenditure</i>	54 810	57 893	61 719	66 068	68 902	73 717	79 026	82 651	90 363
<b>Gross fixed capital formation</b>									
Private									
Dwellings	5 015	5 721	6 056	4 833	4 990	5 775	5 535	6 566	6 310
Other buildings and structures	2 192	2 373	3 013	3 262	4 016	3 735	4 184	4 439	3 725
Machinery and equipment	3 472	4 716	5 516	5 990	6 573	6 517	7 360	6 967	5 905
Livestock	264	258	356	234	218	213	353	408	521
Intangible fixed assets	524	557	630	701	781	825	894	1 018	1 172
Ownership transfer costs	1 025	1 130	1 080	940	991	1 073	1 139	1 376	1 388
<i>Total private gross fixed capital formation</i>	12 492	14 756	16 652	15 960	17 570	18 140	19 466	20 775	19 022
Public									
Public corporations									
Commonwealth	731	624	824	882	879	699	787	876	624
State and local	1 364	851	1 645	1 433	1 803	1 527	2 322	1 996	2 212
<i>Total public corporations gross fixed capital formation</i>	2 095	1 475	2 469	2 315	2 682	2 226	3 109	2 873	2 836
General government									
National	351	392	410	418	386	253	326	410	456
State and local	2 181	2 027	2 094	2 405	2 703	3 042	3 231	3 948	4 241
<i>Total general government gross fixed capital formation</i>	2 531	2 419	2 503	2 823	3 089	3 295	3 557	4 358	4 697
<i>Total public gross fixed capital formation</i>	4 626	3 894	4 972	5 138	5 770	5 521	6 666	7 231	7 533
<i>Total gross fixed capital formation</i>	17 119	18 650	21 624	21 098	23 340	23 660	26 132	28 006	26 555
<b>State final demand</b>	71 928	76 544	83 343	87 165	92 242	97 377	105 158	110 657	116 918
International trade—exports of goods	12 521	12 212	12 783	13 973	13 997	16 710	16 281	16 571	22 233
less International trade—imports of goods	6 334	6 868	7 771	8 053	8 636	9 751	10 811	12 749	13 787
International trade—exports of services	3 009	3 546	3 988	4 504	4 799	4 508	4 815	4 832	4 518
less International trade—imports of services	1 941	2 104	2 456	2 602	2 820	3 043	3 177	4 035	3 822
Balancing item(a)	-10 712	-11 569	-12 921	-13 772	-13 655	-14 612	-15 570	-13 474	-17 125
<b>Gross state product</b>	<b>68 471</b>	<b>71 760</b>	<b>76 966</b>	<b>81 215</b>	<b>85 927</b>	<b>91 189</b>	<b>96 697</b>	<b>101 801</b>	<b>108 936</b>

(a) Calculated as the residual of GSP less State final demand less international trade in exports of goods and services, plus international trade in imports of goods and services. The balancing item implicitly

comprises changes in inventories, total net interstate trade and statistical discrepancy (E).

	1992-93	1993-94	1994-95	1995-96	1996-97	1997-98	1998-99	1999-00	2000-01
	\$m	\$m	\$m	\$m	\$m	\$m	\$m	\$m	\$m
<b>Final consumption expenditure</b>									
General government									
National	2 295	2 428	2 451	2 684	2 654	2 849	2 650	3 083	3 149
State and local	4 395	4 387	4 365	4 311	4 540	4 957	5 296	5 802	5 962
<i>Total general government final consumption expenditure</i>	6 690	6 816	6 816	6 996	7 194	7 806	7 946	8 885	9 111
Households									
Food	2 205	2 322	2 416	2 602	2 806	2 996	3 186	3 247	3 340
Alcoholic beverages and tobacco	817	876	936	999	1 004	1 013	1 081	1 172	1 353
Clothing and footwear	925	953	1 018	1 026	923	1 001	1 034	1 077	1 052
Housing, water, electricity, gas and other fuels	3 964	4 082	4 222	4 329	4 492	4 734	4 944	5 198	5 556
Furnishings and other household equipment	1 164	1 227	1 284	1 325	1 242	1 364	1 298	1 409	1 503
Health	782	813	843	920	886	895	979	1 051	1 296
Transport	2 444	2 496	2 631	2 773	2 853	3 036	3 080	3 143	3 466
Communications	361	392	425	482	535	579	633	674	781
Recreation and culture	1 962	2 116	2 312	2 523	2 567	2 733	2 826	2 899	3 158
Education services	379	400	432	465	513	566	603	642	691
Hotels, cafes and restaurants	1 195	1 384	1 753	1 898	1 768	1 692	1 882	2 054	2 379
Miscellaneous goods and services	2 955	2 931	3 014	3 165	3 371	3 675	3 743	3 840	4 034
Net expenditure interstate	115	125	139	150	154	149	138	144	173
<i>Total household final consumption expenditure</i>	19 269	20 119	21 426	22 660	23 114	24 433	25 427	26 549	28 782
<i>Total final consumption expenditure</i>	25 959	26 935	28 242	29 656	30 308	32 239	33 373	35 434	37 893
<b>Gross fixed capital formation</b>									
Private									
Dwellings	1 367	1 552	1 449	1 207	1 172	1 311	1 518	1 982	1 722
Other buildings and structures	568	511	504	703	908	1 359	903	4 202	2 240
Machinery and equipment	1 655	1 548	2 637	2 337	2 617	3 135	2 624	2 758	3 085
Livestock	135	139	141	78	105	79	73	92	108
Intangible fixed assets	279	273	250	262	364	410	468	475	569
Ownership transfer costs	344	355	363	306	312	358	378	503	493
<i>Total private gross fixed capital formation</i>	4 348	4 378	5 343	4 892	5 478	6 652	5 965	10 012	8 216
Public									
Public corporations									
Commonwealth	347	290	375	394	386	304	338	373	263
State and local	449	301	246	113	160	144	288	-2 747	-1 011
<i>Total public corporations gross fixed capital formation</i>	796	591	621	506	546	448	627	-2 374	-748
General government									
National	198	218	217	226	220	205	164	212	235
State and local	613	559	622	577	669	663	562	725	660
<i>Total general government gross fixed capital formation</i>	811	777	839	803	889	868	726	937	896
<i>Total public gross fixed capital formation</i>	1 607	1 368	1 460	1 310	1 435	1 315	1 353	-1 437	147
<i>Total gross fixed capital formation</i>	5 954	5 746	6 803	6 202	6 913	7 967	7 317	8 575	8 364
<b>State final demand</b>	31 914	32 680	35 045	35 857	37 221	40 207	40 691	44 009	46 257
International trade—exports of goods	3 985	4 100	4 062	4 725	5 325	5 112	5 396	5 990	8 378
less International trade—imports of goods	3 068	2 805	3 099	3 114	3 412	3 941	3 717	4 318	5 046
International trade—exports of services	553	526	556	639	690	678	658	961	2 015
less International trade—imports of services	798	743	798	790	845	922	982	1 111	1 261
Balancing item(a)	-1 725	-1 570	-2 572	-1 952	-2 620	-2 078	-2 516	-4 191	-7 150
<b>Gross state product</b>	<b>30 861</b>	<b>32 188</b>	<b>33 195</b>	<b>35 366</b>	<b>36 359</b>	<b>39 056</b>	<b>39 529</b>	<b>41 340</b>	<b>43 194</b>

(a) Calculated as the residual of GSP less State final demand less international trade in exports of goods and services, plus international trade in imports of goods and services. The balancing item implicitly

comprises changes in inventories, total net interstate trade and statistical discrepancy (E).

	1992-93	1993-94	1994-95	1995-96	1996-97	1997-98	1998-99	1999-00	2000-01
	\$m	\$m	\$m	\$m	\$m	\$m	\$m	\$m	\$m
<b>Final consumption expenditure</b>									
General government									
National	2 083	2 148	2 284	2 460	2 557	2 902	3 115	3 589	3 645
State and local	5 063	5 257	5 192	5 718	5 981	6 644	6 809	7 179	7 638
<i>Total general government final consumption expenditure</i>	7 146	7 405	7 476	8 178	8 538	9 546	9 924	10 768	11 284
Households									
Food	2 842	2 949	3 169	3 461	3 472	3 782	4 126	4 260	4 231
Alcoholic beverages and tobacco	856	988	1 043	1 123	1 130	1 200	1 283	1 357	1 546
Clothing and footwear	1 152	1 179	1 247	1 280	1 247	1 126	1 210	1 333	1 396
Housing, water, electricity, gas and other fuels	4 310	4 580	4 921	5 213	5 493	5 806	6 167	6 593	6 988
Furnishings and other household equipment	1 642	1 840	1 838	1 963	2 133	2 286	2 276	2 479	2 386
Health	904	967	1 096	1 173	1 253	1 254	1 403	1 443	1 865
Transport	3 101	3 206	3 404	3 577	3 773	4 034	4 089	4 096	4 566
Communications	427	470	538	608	675	728	799	850	987
Recreation and culture	2 839	3 278	3 357	3 655	3 777	3 972	3 959	4 146	4 407
Education services	451	505	555	612	701	800	860	905	984
Hotels, cafes and restaurants	1 611	1 771	1 963	2 025	1 836	1 897	1 950	1 941	1 984
Miscellaneous goods and services	3 454	3 505	3 697	3 967	4 253	4 746	4 971	5 025	5 283
Net expenditure interstate	-5	-5	-8	-8	-8	-8	-8	-8	6
<i>Total household final consumption expenditure</i>	23 583	25 233	26 820	28 649	29 737	31 622	33 086	34 421	36 629
<i>Total final consumption expenditure</i>	30 729	32 638	34 296	36 827	38 275	41 168	43 010	45 189	47 913
<b>Gross fixed capital formation</b>									
Private									
Dwellings	2 114	2 677	2 971	2 577	2 536	2 997	3 324	4 074	3 576
Other buildings and structures	1 429	1 939	1 871	2 515	2 747	5 714	3 405	2 684	1 905
Machinery and equipment	4 230	3 925	5 072	5 679	5 369	7 448	5 833	5 076	4 665
Livestock	260	265	320	144	178	123	106	134	148
Intangible fixed assets	850	907	1 036	1 114	1 449	1 492	1 465	1 343	1 666
Ownership transfer costs	557	687	637	639	636	779	748	953	903
<i>Total private gross fixed capital formation</i>	9 440	10 401	11 907	12 670	12 916	18 552	14 880	14 265	12 862
Public									
Public corporations									
Commonwealth	398	336	440	468	466	371	418	465	331
State and local	821	631	410	772	1 113	-1 052	871	945	1 052
<i>Total public corporations gross fixed capital formation</i>	1 219	967	849	1 240	1 579	-681	1 289	1 411	1 383
General government									
National	184	200	200	210	205	193	166	219	243
State and local	858	730	779	931	886	1 069	1 053	1 179	1 530
<i>Total general government gross fixed capital formation</i>	1 041	930	979	1 141	1 090	1 263	1 219	1 398	1 773
<i>Total public gross fixed capital formation</i>	2 260	1 897	1 828	2 381	2 670	582	2 508	2 809	3 156
<i>Total gross fixed capital formation</i>	11 700	12 298	13 735	15 051	15 586	19 134	17 388	17 074	16 018
<i>State final demand</i>	42 429	44 936	48 031	51 878	53 861	60 302	60 398	62 263	63 931
International trade—exports of goods	15 904	16 202	16 994	19 657	20 274	23 430	22 880	27 245	32 728
less International trade—imports of goods	4 966	4 793	5 800	6 289	6 816	8 609	9 013	9 518	9 230
International trade—exports of services	1 590	1 833	2 117	2 296	2 310	2 078	2 102	2 286	2 116
less International trade—imports of services	1 581	1 598	1 827	1 967	2 071	2 555	2 612	2 512	2 925
Balancing item(a)	-9 607	-9 440	-8 633	-10 754	-10 522	-13 110	-10 307	-10 832	-12 499
<b>Gross state product</b>	<b>43 769</b>	<b>47 140</b>	<b>50 881</b>	<b>54 821</b>	<b>57 036</b>	<b>61 536</b>	<b>63 448</b>	<b>68 933</b>	<b>74 120</b>

(a) Calculated as the residual of GSP less State final demand less international trade in exports of goods and services, plus international trade in imports of

goods and services. The balancing item implicitly comprises changes in inventories, total net interstate trade and statistical discrepancy (E).

	1992-93	1993-94	1994-95	1995-96	1996-97	1997-98	1998-99	1999-00	2000-01
	\$m	\$m	\$m	\$m	\$m	\$m	\$m	\$m	\$m
<b>Final consumption expenditure</b>									
General government									
National	644	630	662	729	759	784	851	952	947
State and local	1 415	1 449	1 486	1 560	1 656	1 655	1 875	1 887	1 930
<i>Total general government final consumption expenditure</i>	2 060	2 079	2 148	2 289	2 415	2 439	2 726	2 839	2 877
Households									
Food	828	896	886	915	915	949	912	937	985
Alcoholic beverages and tobacco	233	276	282	299	306	321	346	376	414
Clothing and footwear	282	293	284	287	281	295	299	278	286
Housing, water, electricity, gas and other fuels	1 169	1 227	1 268	1 332	1 388	1 433	1 459	1 486	1 544
Furnishings and other household equipment	374	384	402	424	433	431	438	457	469
Health	249	285	303	328	357	373	424	408	499
Transport	756	777	807	847	908	935	951	996	1 080
Communications	108	119	136	155	170	185	200	214	248
Recreation and culture	705	754	783	835	829	934	943	1 005	1 027
Education services	109	117	121	128	142	152	157	167	179
Hotels, cafes and restaurants	394	438	496	513	511	499	524	571	568
Miscellaneous goods and services	901	876	898	931	1 004	1 111	1 142	1 176	1 229
Net expenditure interstate	-49	-50	-56	-62	-64	-69	-68	-67	-57
<i>Total household final consumption expenditure</i>	6 059	6 392	6 611	6 932	7 183	7 548	7 726	8 005	8 471
<i>Total final consumption expenditure</i>	8 119	8 471	8 759	9 221	9 598	9 987	10 452	10 844	11 348
<b>Gross fixed capital formation</b>									
Private									
Dwellings	452	507	511	436	402	380	348	407	387
Other buildings and structures	178	148	168	226	244	214	204	179	136
Machinery and equipment	469	499	730	626	750	684	494	547	592
Livestock	52	56	46	46	52	55	57	57	76
Intangible fixed assets	53	51	56	57	72	120	96	96	125
Ownership transfer costs	88	101	110	100	79	72	82	90	91
<i>Total private gross fixed capital formation</i>	1 292	1 362	1 622	1 490	1 599	1 525	1 281	1 376	1 407
Public									
Public corporations									
Commonwealth	110	92	119	125	122	95	105	115	80
State and local	145	281	117	163	158	180	176	147	149
<i>Total public corporations gross fixed capital formation</i>	255	373	236	287	280	275	281	261	229
General government									
National	60	63	62	65	63	53	48	62	70
State and local	234	191	199	228	208	189	201	195	178
<i>Total general government gross fixed capital formation</i>	294	254	262	293	271	242	249	257	248
<i>Total public gross fixed capital formation</i>	549	628	498	581	551	517	530	518	477
<i>Total gross fixed capital formation</i>	1 841	1 990	2 120	2 071	2 150	2 042	1 810	1 894	1 884
<b>State final demand</b>	9 960	10 461	10 878	11 291	11 747	12 029	12 262	12 738	13 232
International trade—exports of goods	1 621	1 651	1 684	1 711	1 796	2 335	2 080	2 133	2 460
less International trade—imports of goods	334	448	342	351	395	385	407	439	523
International trade—exports of services	108	113	134	149	152	141	121	192	325
less International trade—imports of services	118	118	129	136	153	170	161	190	184
Balancing item(a)	-2 269	-2 560	-2 592	-2 508	-2 746	-3 283	-2 690	-3 108	-3 716
<b>Gross state product</b>	<b>8 968</b>	<b>9 099</b>	<b>9 634</b>	<b>10 156</b>	<b>10 401</b>	<b>10 666</b>	<b>11 206</b>	<b>11 326</b>	<b>11 593</b>

(a) Calculated as the residual of GSP less State final demand less international trade in exports of goods and services, plus international trade in imports of goods and services. The balancing item implicitly

comprises changes in inventories, total net interstate trade and statistical discrepancy (E).

	1992-93	1993-94	1994-95	1995-96	1996-97	1997-98	1998-99	1999-00	2000-01
	\$m	\$m	\$m	\$m	\$m	\$m	\$m	\$m	\$m
<b>Final consumption expenditure</b>									
<b>General government</b>									
National	508	569	587	735	691	834	985	1 207	1 320
State and local	1 094	1 118	1 239	1 332	1 432	1 550	1 572	1 641	1 732
<i>Total general government final consumption expenditure</i>	<i>1 603</i>	<i>1 688</i>	<i>1 826</i>	<i>2 067</i>	<i>2 123</i>	<i>2 384</i>	<i>2 557</i>	<i>2 848</i>	<i>3 053</i>
<b>Households</b>									
Food	405	402	437	487	455	426	444	506	510
Alcoholic beverages and tobacco	123	124	127	142	139	144	154	162	183
Clothing and footwear	81	90	99	120	98	93	95	105	120
Housing, water, electricity, gas and other fuels	378	399	426	458	494	529	568	610	640
Furnishings and other household equipment	137	146	162	172	162	181	191	217	211
Health	65	73	80	83	88	89	98	104	129
Transport	278	287	324	337	344	382	372	379	407
Communications	39	46	53	62	68	72	80	91	102
Recreation and culture	241	249	300	346	332	392	414	443	459
Education services	22	19	19	23	29	33	39	42	42
Hotels, cafes and restaurants	268	254	253	274	271	294	315	280	307
Miscellaneous goods and services	357	359	389	423	452	523	541	585	606
Net expenditure interstate	-117	-130	-151	-169	-192	-187	-188	-206	-228
<i>Total household final consumption expenditure</i>	<i>2 277</i>	<i>2 318</i>	<i>2 517</i>	<i>2 758</i>	<i>2 739</i>	<i>2 972</i>	<i>3 124</i>	<i>3 317</i>	<i>3 488</i>
<i>Total final consumption expenditure</i>	<i>3 880</i>	<i>4 006</i>	<i>4 343</i>	<i>4 825</i>	<i>4 862</i>	<i>5 356</i>	<i>5 681</i>	<i>6 165</i>	<i>6 541</i>
<b>Gross fixed capital formation</b>									
<b>Private</b>									
Dwellings	178	208	251	296	294	343	497	373	238
Other buildings and structures	114	190	167	247	261	450	1 252	439	162
Machinery and equipment	174	279	206	408	366	290	449	402	559
Livestock	57	62	68	30	21	19	43	46	59
Intangible fixed assets	177	209	297	246	201	311	247	235	195
Ownership transfer costs	34	47	61	76	85	92	79	46	37
<i>Total private gross fixed capital formation</i>	<i>734</i>	<i>996</i>	<i>1 051</i>	<i>1 303</i>	<i>1 228</i>	<i>1 505</i>	<i>2 567</i>	<i>1 541</i>	<i>1 250</i>
<b>Public</b>									
<b>Public corporations</b>									
Commonwealth	40	34	45	48	48	38	43	48	34
State and local	41	41	76	31	30	32	-31	72	50
<i>Total public corporations gross fixed capital formation</i>	<i>82</i>	<i>75</i>	<i>121</i>	<i>79</i>	<i>78</i>	<i>70</i>	<i>12</i>	<i>120</i>	<i>84</i>
<b>General government</b>									
National	28	32	33	35	35	25	18	36	41
State and local	149	151	207	213	249	307	184	170	121
<i>Total general government gross fixed capital formation</i>	<i>177</i>	<i>182</i>	<i>240</i>	<i>248</i>	<i>284</i>	<i>332</i>	<i>202</i>	<i>206</i>	<i>161</i>
<i>Total public gross fixed capital formation</i>	<i>259</i>	<i>257</i>	<i>361</i>	<i>327</i>	<i>362</i>	<i>402</i>	<i>214</i>	<i>326</i>	<i>245</i>
<i>Total gross fixed capital formation</i>	<i>993</i>	<i>1 253</i>	<i>1 412</i>	<i>1 630</i>	<i>1 590</i>	<i>1 907</i>	<i>2 781</i>	<i>1 867</i>	<i>1 496</i>
<i>State final demand</i>	<i>4 872</i>	<i>5 259</i>	<i>5 755</i>	<i>6 455</i>	<i>6 452</i>	<i>7 262</i>	<i>8 462</i>	<i>8 032</i>	<i>8 036</i>
International trade—exports of goods	1 363	1 170	1 129	1 283	1 389	1 466	1 422	2 752	4 553
less International trade—imports of goods	273	269	333	395	404	656	495	1 400	671
International trade—exports of services	219	275	295	292	275	282	295	374	342
less International trade—imports of services	149	168	180	190	200	222	245	236	273
Balancing item(a)	-1 436	-1 647	-1 610	-1 951	-1 727	-2 058	-2 788	-2 069	-3 269
<b>Gross state product</b>	<b>4 597</b>	<b>4 620</b>	<b>5 056</b>	<b>5 494</b>	<b>5 785</b>	<b>6 075</b>	<b>6 652</b>	<b>7 452</b>	<b>8 719</b>

(a) Calculated as the residual of GSP less State final demand less international trade in exports of goods and services, plus international trade in imports of goods and services. The balancing item implicitly

comprises changes in inventories, total net interstate trade and statistical discrepancy (E).



	1992-93	1993-94	1994-95	1995-96	1996-97	1997-98	1998-99	1999-00	2000-01
	\$m	\$m	\$m	\$m	\$m	\$m	\$m	\$m	\$m
<b>Final consumption expenditure</b>									
<b>General government</b>									
National	4 282	4 988	5 337	5 749	6 467	6 747	6 994	8 756	8 893
State and local	1 007	1 020	1 041	1 085	1 159	1 170	1 173	1 268	1 294
<i>Total general government final consumption expenditure</i>	<i>5 289</i>	<i>6 008</i>	<i>6 378</i>	<i>6 834</i>	<i>7 626</i>	<i>7 918</i>	<i>8 168</i>	<i>10 023</i>	<i>10 187</i>
<b>Households</b>									
Food	527	562	604	644	624	617	622	692	796
Alcoholic beverages and tobacco	160	164	170	195	205	229	253	270	316
Clothing and footwear	255	258	252	277	275	272	283	307	337
Housing, water, electricity, gas and other fuels	1 084	1 132	1 160	1 177	1 206	1 241	1 293	1 380	1 478
Furnishings and other household equipment	335	332	350	340	367	395	402	490	489
Health	166	165	158	171	179	190	205	210	273
Transport	576	611	643	662	674	737	760	767	840
Communications	87	94	105	120	132	143	158	172	196
Recreation and culture	605	682	714	721	751	821	887	992	1 034
Education services	122	133	132	137	149	163	166	184	196
Hotels, cafes and restaurants	219	257	271	277	298	348	410	422	517
Miscellaneous goods and services	713	732	764	810	871	977	1 024	1 056	1 194
Net expenditure interstate	65	83	96	98	106	92	70	68	86
<i>Total household final consumption expenditure</i>	<i>4 912</i>	<i>5 204</i>	<i>5 420</i>	<i>5 628</i>	<i>5 840</i>	<i>6 226</i>	<i>6 534</i>	<i>7 010</i>	<i>7 752</i>
<i>Total final consumption expenditure</i>	<i>10 201</i>	<i>11 212</i>	<i>11 798</i>	<i>12 462</i>	<i>13 466</i>	<i>14 144</i>	<i>14 702</i>	<i>17 033</i>	<i>17 939</i>
<b>Gross fixed capital formation</b>									
<b>Private</b>									
Dwellings	513	535	481	357	372	344	411	523	424
Other buildings and structures	234	217	212	193	224	471	448	299	218
Machinery and equipment	263	304	151	204	185	329	277	385	418
Livestock	—	—	—	—	—	—	—	—	—
Intangible fixed assets	97	103	104	104	127	154	193	233	259
Ownership transfer costs	113	109	105	81	82	85	89	144	142
<i>Total private gross fixed capital formation</i>	<i>1 220</i>	<i>1 267</i>	<i>1 052</i>	<i>939</i>	<i>990</i>	<i>1 382</i>	<i>1 417</i>	<i>1 584</i>	<i>1 461</i>
<b>Public</b>									
<b>Public corporations</b>									
Commonwealth	77	66	84	89	88	70	77	87	64
State and local	76	71	80	80	60	54	34	63	35
<i>Total public corporations gross fixed capital formation</i>	<i>153</i>	<i>137</i>	<i>164</i>	<i>169</i>	<i>148</i>	<i>124</i>	<i>110</i>	<i>150</i>	<i>99</i>
<b>General government</b>									
National	401	478	482	519	506	153	302	545	627
State and local	179	141	155	95	123	133	132	152	123
<i>Total general government gross fixed capital formation</i>	<i>580</i>	<i>619</i>	<i>637</i>	<i>614</i>	<i>630</i>	<i>285</i>	<i>433</i>	<i>697</i>	<i>750</i>
<i>Total public gross fixed capital formation</i>	<i>733</i>	<i>756</i>	<i>801</i>	<i>782</i>	<i>777</i>	<i>409</i>	<i>544</i>	<i>847</i>	<i>849</i>
<i>Total gross fixed capital formation</i>	<i>1 953</i>	<i>2 023</i>	<i>1 854</i>	<i>1 722</i>	<i>1 767</i>	<i>1 792</i>	<i>1 961</i>	<i>2 431</i>	<i>2 310</i>
<i>State final demand</i>	<i>12 154</i>	<i>13 236</i>	<i>13 651</i>	<i>14 184</i>	<i>15 233</i>	<i>15 935</i>	<i>16 662</i>	<i>19 464</i>	<i>20 248</i>
International trade—exports of goods	8	16	24	20	11	20	31	33	22
less International trade—imports of goods	19	22	12	10	13	11	10	9	6
International trade—exports of services	364	411	432	467	500	526	548	713	645
less International trade—imports of services	721	702	684	732	699	807	860	969	937
Balancing item(a)	-3 009	-3 688	-3 743	-3 815	-4 405	-4 460	-4 407	-6 576	-6 572
<b>Gross state product</b>	<b>8 778</b>	<b>9 250</b>	<b>9 668</b>	<b>10 114</b>	<b>10 627</b>	<b>11 204</b>	<b>11 964</b>	<b>12 656</b>	<b>13 401</b>

— nil or rounded to zero (including null cells)

(a) Calculated as the residual of GSP less State final demand less international trade in exports of goods and services, plus international

trade in imports of goods and services. The balancing item implicitly comprises changes in inventories, total net interstate trade and statistical discrepancy (E).

	1992-93	1993-94	1994-95	1995-96	1996-97	1997-98	1998-99	1999-00	2000-01
	\$m	\$m	\$m	\$m	\$m	\$m	\$m	\$m	\$m
<b>Final consumption expenditure</b>									
General government									
National	33 473	34 780	36 359	38 151	38 294	40 696	42 211	49 397	50 790
State and local	49 562	49 661	51 377	54 804	57 882	60 636	66 004	68 641	74 399
<i>Total general government final consumption expenditure</i>	83 035	84 441	87 736	92 955	96 176	101 332	108 215	118 038	125 189
Households									
Food	29 472	30 055	31 806	34 117	34 831	36 541	38 422	39 936	42 235
Alcoholic beverages and tobacco	10 166	10 405	10 694	11 744	12 337	12 940	13 823	14 933	17 106
Clothing and footwear	11 974	12 016	12 394	12 786	12 728	13 330	14 539	15 380	15 391
Housing, water, electricity, gas and other fuels	53 693	56 056	58 852	62 148	65 708	69 875	73 735	78 231	83 629
Furnishings and other household equipment	15 713	16 493	17 270	17 828	18 344	18 793	19 173	20 990	21 520
Health	11 036	11 786	12 382	12 899	13 279	13 293	14 619	15 740	18 634
Transport	31 876	32 852	35 538	37 388	39 106	41 802	43 212	44 493	48 687
Communications	4 552	5 045	5 623	6 407	7 106	7 677	8 428	8 994	10 453
Recreation and culture	28 057	30 624	33 694	36 945	38 562	41 510	43 706	46 116	49 083
Education services	5 006	5 341	5 678	6 156	6 864	7 649	8 271	8 756	9 379
Hotels, cafes and restaurants	17 316	18 674	20 855	22 220	22 026	23 489	26 441	28 537	30 796
Miscellaneous goods and services	36 686	36 551	38 085	40 432	43 674	48 201	50 582	52 607	55 771
<i>Total household final consumption expenditure</i>	255 547	265 897	282 870	301 069	314 565	335 101	354 951	374 712	402 685
<i>Total final consumption expenditure</i>	338 582	350 338	370 606	394 024	410 741	436 433	463 166	492 750	527 874
<b>Gross fixed capital formation</b>									
Private									
Dwellings	20 928	23 909	25 558	22 771	23 074	27 708	30 405	36 461	32 698
Other buildings and structures	10 899	11 383	12 545	15 881	18 851	22 815	23 406	24 616	18 849
Machinery and equipment	25 708	28 760	33 884	36 964	38 896	42 270	41 562	42 394	41 947
Livestock	1 728	1 828	1 931	1 190	1 322	1 162	1 335	1 559	1 966
Intangible fixed assets	4 789	5 088	5 406	5 530	6 738	7 728	8 840	9 969	11 282
Ownership transfer costs	4 907	5 787	5 668	5 693	6 157	7 042	7 280	8 901	8 686
<i>Total private gross fixed capital formation</i>	68 959	76 755	84 993	88 029	95 040	108 722	112 831	123 896	115 431
Public									
Public corporations									
Commonwealth	4 324	3 665	4 736	5 017	4 973	3 959	4 423	4 951	3 577
State and local	6 436	6 292	7 129	6 305	4 551	4 055	7 045	4 325	5 840
<i>Total public corporations gross fixed capital formation</i>	10 759	9 957	11 864	11 322	9 525	8 013	11 468	9 277	9 418
General government									
National	3 244	3 554	3 561	3 510	3 314	2 474	2 627	3 623	3 999
State and local	8 479	8 194	8 931	8 737	9 711	10 261	10 780	12 255	12 402
<i>Total general government gross fixed capital formation</i>	11 723	11 748	12 492	12 247	13 025	12 735	13 407	15 878	16 401
<i>Total public gross fixed capital formation</i>	22 482	21 706	24 357	23 570	22 551	20 748	24 875	25 155	25 819
<i>Total gross fixed capital formation</i>	91 441	98 461	109 349	111 599	117 589	129 472	137 703	149 055	141 247
<b>Domestic final demand</b>	430 024	448 798	479 955	505 624	528 326	565 905	600 868	641 802	669 121
International trade—exports of goods	60 702	64 549	67 051	76 004	78 932	87 768	85 992	97 285	119 603
less International trade—imports of goods	59 577	64 469	74 621	77 793	78 995	90 684	97 610	110 077	118 264
International trade—exports of services	16 265	18 596	20 553	22 949	24 226	25 206	26 242	28 316	32 794
less International trade—imports of services	19 142	20 533	22 337	23 349	24 152	26 398	28 026	29 713	32 233
Balancing item(a)	-2 572	-464	744	-608	1 548	-568	4 124	1 598	-989
<b>Gross domestic product</b>	<b>425 706</b>	<b>446 480</b>	<b>471 348</b>	<b>502 828</b>	<b>529 886</b>	<b>561 229</b>	<b>591 592</b>	<b>629 212</b>	<b>670 030</b>

(a) Calculated as the residual of GDP less domestic final demand less international trade in exports of goods and services, plus international

trade in imports of goods and services. The balancing item implicitly comprises changes in inventories and statistical discrepancy (E).

	1992-93	1993-94	1994-95	1995-96	1996-97	1997-98	1998-99	1999-00	2000-01
	\$m	\$m	\$m	\$m	\$m	\$m	\$m	\$m	\$m
NEW SOUTH WALES									
Compensation of employees	72 244	75 344	79 686	86 461	92 792	96 892	103 307	108 948	116 401
Gross operating surplus	46 207	49 441	51 553	54 399	58 339	63 945	65 302	70 975	73 341
Gross mixed income	13 752	13 497	13 705	14 127	14 750	14 864	15 622	17 118	17 236
Total factor income	132 203	138 282	144 944	154 987	165 881	175 701	184 231	197 041	206 979
Taxes less subsidies on production and imports	16 433	18 058	19 998	21 905	23 285	25 031	27 111	28 145	31 794
Statistical discrepancy (I)	284	-187	—	—	—	—	—	—	-14
<b>Gross state product</b>	<b>148 920</b>	<b>156 153</b>	<b>164 942</b>	<b>176 892</b>	<b>189 166</b>	<b>200 732</b>	<b>211 342</b>	<b>225 186</b>	<b>238 759</b>
VICTORIA									
Compensation of employees	53 600	55 039	57 786	61 718	65 507	68 306	73 706	78 168	83 849
Gross operating surplus	34 348	36 567	36 579	37 848	39 312	41 913	44 034	47 227	49 142
Gross mixed income	11 139	11 194	11 417	12 708	12 134	13 142	13 753	14 902	15 154
Total factor income	99 087	102 800	105 782	112 274	116 953	123 361	131 493	140 297	148 145
Taxes less subsidies on production and imports	12 043	13 609	15 224	16 496	17 632	17 410	19 261	20 221	23 173
Statistical discrepancy (I)	212	-139	—	—	—	—	—	—	-10
<b>Gross state product</b>	<b>111 342</b>	<b>116 270</b>	<b>121 006</b>	<b>128 770</b>	<b>134 585</b>	<b>140 771</b>	<b>150 754</b>	<b>160 518</b>	<b>171 308</b>
QUEENSLAND									
Compensation of employees	31 899	32 852	36 029	38 943	42 664	44 263	47 323	49 174	52 985
Gross operating surplus	20 987	22 473	23 181	24 603	25 459	28 376	28 795	31 045	32 272
Gross mixed income	8 581	8 670	9 023	8 681	8 729	9 108	10 371	10 879	11 093
Total factor income	61 467	63 995	68 233	72 227	76 852	81 747	86 489	91 098	96 350
Taxes less subsidies on production and imports	6 873	7 851	8 733	8 988	9 075	9 442	10 208	10 703	12 592
Statistical discrepancy (I)	131	-86	—	—	—	—	—	—	-6
<b>Gross state product</b>	<b>68 471</b>	<b>71 760</b>	<b>76 966</b>	<b>81 215</b>	<b>85 927</b>	<b>91 189</b>	<b>96 697</b>	<b>101 801</b>	<b>108 936</b>
SOUTH AUSTRALIA									
Compensation of employees	15 203	16 082	16 279	17 195	17 912	18 635	19 103	19 956	20 899
Gross operating surplus	9 034	9 297	9 601	9 683	10 288	11 754	11 921	12 632	12 763
Gross mixed income	3 535	3 557	3 694	4 527	4 193	4 504	4 096	4 034	4 057
Total factor income	27 772	28 936	29 574	31 405	32 393	34 893	35 120	36 622	37 719
Taxes less subsidies on production and imports	3 030	3 290	3 621	3 961	3 966	4 163	4 409	4 718	5 477
Statistical discrepancy (I)	59	-38	—	—	—	—	—	—	-2
<b>Gross state product</b>	<b>30 861</b>	<b>32 188</b>	<b>33 195</b>	<b>35 366</b>	<b>36 359</b>	<b>39 056</b>	<b>39 529</b>	<b>41 340</b>	<b>43 194</b>
WESTERN AUSTRALIA									
Compensation of employees	18 508	20 117	21 432	22 726	24 254	25 414	27 205	29 317	30 777
Gross operating surplus	15 721	16 814	18 073	19 546	20 444	22 542	22 362	24 446	27 841
Gross mixed income	5 316	5 527	6 211	7 006	6 677	7 325	7 529	8 396	8 354
Total factor income	39 545	42 458	45 716	49 278	51 375	55 281	57 096	62 159	66 972
Taxes less subsidies on production and imports	4 141	4 738	5 165	5 543	5 661	6 255	6 352	6 774	7 152
Statistical discrepancy (I)	83	-56	—	—	—	—	—	—	-4
<b>Gross state product</b>	<b>43 769</b>	<b>47 140</b>	<b>50 881</b>	<b>54 821</b>	<b>57 036</b>	<b>61 536</b>	<b>63 448</b>	<b>68 933</b>	<b>74 120</b>

— nil or rounded to zero (including null cells)

	1992-93	1993-94	1994-95	1995-96	1996-97	1997-98	1998-99	1999-00	2000-01
	\$m	\$m	\$m	\$m	\$m	\$m	\$m	\$m	\$m
TASMANIA									
Compensation of employees	4 468	4 427	4 721	5 005	5 158	5 284	5 478	5 467	5 652
Gross operating surplus	2 589	2 678	2 837	3 043	3 126	3 260	3 472	3 530	3 553
Gross mixed income	1 104	1 138	1 142	1 113	1 133	1 127	1 225	1 270	1 292
Total factor income	8 161	8 243	8 700	9 161	9 417	9 671	10 175	10 267	10 497
Taxes less subsidies on production and imports	790	867	934	995	984	995	1 031	1 059	1 097
Statistical discrepancy (I)	17	-11	—	—	—	—	—	—	-1
<b>Gross state product</b>	<b>8 968</b>	<b>9 099</b>	<b>9 634</b>	<b>10 156</b>	<b>10 401</b>	<b>10 666</b>	<b>11 206</b>	<b>11 326</b>	<b>11 593</b>
NORTHERN TERRITORY									
Compensation of employees	2 045	2 208	2 518	2 716	2 980	3 152	3 504	3 604	3 881
Gross operating surplus	1 988	1 727	1 742	1 923	1 996	2 106	2 246	2 886	3 893
Gross mixed income	336	389	429	435	442	390	473	518	557
Total factor income	4 369	4 324	4 689	5 074	5 418	5 648	6 223	7 008	8 331
Taxes less subsidies on production and imports	219	302	367	420	367	427	429	444	388
Statistical discrepancy (I)	9	-6	—	—	—	—	—	—	—
<b>Gross state product</b>	<b>4 597</b>	<b>4 620</b>	<b>5 056</b>	<b>5 494</b>	<b>5 785</b>	<b>6 075</b>	<b>6 652</b>	<b>7 452</b>	<b>8 719</b>
AUSTRALIAN CAPITAL TERRITORY									
Compensation of employees	5 309	5 733	5 999	6 336	6 701	6 966	7 460	7 678	8 194
Gross operating surplus	2 329	2 387	2 445	2 578	2 693	2 937	3 054	3 396	3 544
Gross mixed income	546	493	517	467	443	469	521	549	549
Total factor income	8 184	8 613	8 961	9 381	9 837	10 372	11 035	11 623	12 287
Taxes less subsidies on production and imports	577	648	707	733	790	832	929	1 033	1 115
Statistical discrepancy (I)	17	-11	—	—	—	—	—	—	-1
<b>Gross state product</b>	<b>8 778</b>	<b>9 250</b>	<b>9 668</b>	<b>10 114</b>	<b>10 627</b>	<b>11 204</b>	<b>11 964</b>	<b>12 656</b>	<b>13 401</b>
AUSTRALIA									
Compensation of employees	203 276	211 802	224 450	241 100	257 968	268 912	287 086	302 312	322 638
Gross operating surplus	133 204	141 384	146 011	153 623	161 658	176 833	181 186	196 137	206 349
Gross mixed income	44 308	44 465	46 138	49 064	48 500	50 929	53 590	57 666	58 292
Total factor income	380 788	397 651	416 599	443 787	468 126	496 674	521 862	556 115	587 279
Taxes less subsidies on production and imports	44 106	49 363	54 749	59 041	61 760	64 555	69 730	73 097	82 788
Statistical discrepancy (I)	812	-534	—	—	—	—	—	—	-38
<b>Gross domestic product</b>	<b>425 706</b>	<b>446 480</b>	<b>471 348</b>	<b>502 828</b>	<b>529 886</b>	<b>561 229</b>	<b>591 592</b>	<b>629 212</b>	<b>670 030</b>

— nil or rounded to zero (including null cells)

	1992-93	1993-94	1994-95	1995-96	1996-97	1997-98	1998-99	1999-00	2000-01
	\$m	\$m	\$m	\$m	\$m	\$m	\$m	\$m	\$m
<b>Agriculture, forestry and fishing</b>									
Compensation of employees	1 077	1 122	1 241	1 329	1 275	1 287	1 450	1 480	1 633
Gross operating surplus and gross mixed income	2 568	2 754	2 017	2 670	3 527	2 799	2 759	3 557	3 699
<i>Total</i>	3 645	3 876	3 258	3 999	4 802	4 086	4 209	5 037	5 332
<b>Mining</b>									
Compensation of employees	1 392	1 391	1 360	1 613	1 601	1 702	1 552	1 348	1 426
Gross operating surplus and gross mixed income	1 014	1 238	1 406	1 526	1 552	1 581	1 809	2 077	1 722
<i>Total</i>	2 406	2 629	2 766	3 139	3 153	3 283	3 361	3 425	3 148
<b>Manufacturing</b>									
Compensation of employees	10 718	11 212	11 714	12 808	12 623	13 074	13 315	13 890	15 103
Gross operating surplus and gross mixed income	7 677	8 634	8 993	9 038	9 827	11 111	11 816	11 864	12 109
<i>Total</i>	18 395	19 846	20 707	21 846	22 450	24 185	25 131	25 754	27 212
<b>Electricity, gas and water supply</b>									
Compensation of employees	1 626	1 518	1 407	1 438	1 286	1 175	1 133	1 211	1 303
Gross operating surplus and gross mixed income	3 291	3 273	3 110	2 819	3 056	3 245	2 650	3 420	3 513
<i>Total</i>	4 917	4 791	4 517	4 257	4 342	4 420	3 783	4 631	4 816
<b>Construction</b>									
Compensation of employees	3 507	3 962	4 519	4 587	4 732	4 819	5 287	6 341	6 056
Gross operating surplus and gross mixed income	3 731	3 998	4 541	5 079	5 469	5 881	6 057	6 392	5 396
<i>Total</i>	7 238	7 960	9 060	9 666	10 201	10 700	11 344	12 733	11 452
<b>Wholesale trade</b>									
Compensation of employees	6 295	6 497	6 328	6 785	7 353	7 775	7 903	8 207	7 795
Gross operating surplus and gross mixed income	2 388	2 555	2 561	2 877	2 625	2 506	2 725	2 971	2 838
<i>Total</i>	8 683	9 052	8 889	9 662	9 978	10 281	10 628	11 178	10 633
<b>Retail trade</b>									
Compensation of employees	5 169	5 605	5 816	6 229	6 811	7 352	8 040	8 028	8 457
Gross operating surplus and gross mixed income	2 120	2 245	2 331	2 476	2 296	2 258	2 151	2 168	2 112
<i>Total</i>	7 289	7 850	8 147	8 705	9 107	9 610	10 191	10 196	10 569
<b>Accommodation, cafes and restaurants</b>									
Compensation of employees	2 073	2 199	2 506	2 648	2 884	3 113	3 321	3 582	4 023
Gross operating surplus and gross mixed income	899	941	1 110	1 259	1 331	1 501	1 671	1 787	2 065
<i>Total</i>	2 972	3 140	3 616	3 907	4 215	4 614	4 992	5 369	6 088
<b>Transport and storage</b>									
Compensation of employees	4 654	5 037	5 533	5 592	6 470	6 259	6 460	6 547	7 086
Gross operating surplus and gross mixed income	2 251	2 387	2 581	2 260	2 310	2 722	2 328	2 499	2 253
<i>Total</i>	6 905	7 424	8 114	7 852	8 780	8 981	8 788	9 046	9 339
<b>Communication services</b>									
Compensation of employees	2 105	2 037	2 185	2 526	2 664	2 779	2 776	2 779	3 119
Gross operating surplus and gross mixed income	2 017	1 989	2 175	2 439	2 729	3 156	3 296	3 356	3 471
<i>Total</i>	4 122	4 026	4 360	4 965	5 393	5 935	6 072	6 135	6 590
<b>Finance and insurance</b>									
Compensation of employees	5 506	5 523	5 943	6 685	7 177	7 776	8 425	9 295	10 295
Gross operating surplus and gross mixed income	4 739	5 019	4 691	4 690	4 642	5 723	5 651	6 904	7 657
<i>Total</i>	10 245	10 542	10 634	11 375	11 819	13 499	14 076	16 199	17 952
<b>Property and business services</b>									
Compensation of employees	8 470	9 044	10 295	11 685	12 935	14 206	16 550	17 948	20 458
Gross operating surplus and gross mixed income	6 498	6 293	7 000	6 756	7 648	7 964	8 011	8 846	9 194
<i>Total</i>	14 968	15 337	17 295	18 441	20 583	22 170	24 561	26 794	29 652
<b>Government administration and defence</b>									
Compensation of employees	4 188	4 308	4 414	4 936	5 688	5 703	5 948	6 124	5 988

	1992-93	1993-94	1994-95	1995-96	1996-97	1997-98	1998-99	1999-00	2000-01
	\$m	\$m	\$m	\$m	\$m	\$m	\$m	\$m	\$m
<b>Education</b>									
Compensation of employees	5 656	6 002	6 115	6 193	6 835	7 229	7 641	7 769	8 367
Gross operating surplus and gross mixed income	87	103	116	292	196	186	168	175	215
<i>Total</i>	5 743	6 105	6 231	6 485	7 031	7 415	7 809	7 944	8 582
<b>Health and community services</b>									
Compensation of employees	6 324	6 225	6 407	7 091	7 853	8 086	8 569	9 050	9 878
Gross operating surplus and gross mixed income	1 137	1 222	1 310	1 401	1 273	1 320	1 385	1 436	1 572
<i>Total</i>	7 461	7 447	7 717	8 492	9 126	9 406	9 954	10 486	11 450
<b>Cultural and recreational services</b>									
Compensation of employees	1 085	1 144	1 354	1 597	1 761	1 829	1 837	1 975	2 038
Gross operating surplus and gross mixed income	1 185	1 227	1 260	1 229	1 229	1 536	1 539	1 765	2 251
<i>Total</i>	2 270	2 371	2 614	2 826	2 990	3 365	3 376	3 740	4 289
<b>Personal and other services</b>									
Compensation of employees	2 399	2 518	2 549	2 719	2 844	2 728	3 100	3 374	3 377
Gross operating surplus and gross mixed income	428	372	492	716	783	891	852	957	946
<i>Total</i>	2 827	2 890	3 041	3 435	3 627	3 619	3 952	4 331	4 323
<b>Ownership of dwellings</b>									
Gross operating surplus	14 822	15 436	16 170	17 462	18 993	20 702	22 150	23 862	25 253
<b>General government</b>									
Gross operating surplus(a)	3 107	3 252	3 394	3 537	3 603	3 727	3 906	4 057	4 311
<b>All industries</b>									
Compensation of employees	72 244	75 344	79 686	86 461	92 792	96 892	103 307	108 948	116 401
Gross operating surplus and gross mixed income	59 959	62 938	65 258	68 526	73 089	78 809	80 924	88 093	90 577
<b>Total</b>	<b>132 203</b>	<b>138 282</b>	<b>144 944</b>	<b>154 987</b>	<b>165 881</b>	<b>175 701</b>	<b>184 231</b>	<b>197 041</b>	<b>206 979</b>

(a) This item represents the gross operating surplus of all general government

operations in all industries for this State. Data are not available to provide State by industry details of general government gross operating surplus.

	1992-93	1993-94	1994-95	1995-96	1996-97	1997-98	1998-99	1999-00	2000-01
	\$m	\$m	\$m	\$m	\$m	\$m	\$m	\$m	\$m
<b>Agriculture, forestry and fishing</b>									
Compensation of employees	482	534	559	569	678	679	873	1 009	1 116
Gross operating surplus and gross mixed income	3 022	3 259	2 620	3 529	3 242	3 151	3 282	3 865	4 132
<i>Total</i>	3 504	3 793	3 179	4 098	3 920	3 830	4 155	4 874	5 248
<b>Mining</b>									
Compensation of employees	340	326	341	355	312	359	416	471	499
Gross operating surplus and gross mixed income	3 667	3 373	2 972	2 903	2 647	2 570	1 994	2 691	2 246
<i>Total</i>	4 007	3 699	3 313	3 258	2 959	2 929	2 410	3 162	2 745
<b>Manufacturing</b>									
Compensation of employees	10 084	9 996	10 529	11 300	11 426	12 025	12 375	13 177	14 355
Gross operating surplus and gross mixed income	6 817	7 660	8 007	8 244	8 729	9 211	9 191	9 184	9 332
<i>Total</i>	16 901	17 656	18 536	19 544	20 155	21 236	21 566	22 361	23 687
<b>Electricity, gas and water supply</b>									
Compensation of employees	1 359	1 204	1 006	961	817	748	780	724	781
Gross operating surplus and gross mixed income	2 456	2 660	2 639	2 572	2 449	2 263	2 986	3 343	3 684
<i>Total</i>	3 815	3 864	3 645	3 533	3 266	3 011	3 766	4 067	4 465
<b>Construction</b>									
Compensation of employees	2 434	2 398	2 483	2 544	2 652	3 042	3 392	3 474	3 325
Gross operating surplus and gross mixed income	2 375	2 550	2 940	3 137	3 284	3 371	3 671	4 018	4 074
<i>Total</i>	4 809	4 948	5 423	5 681	5 936	6 413	7 063	7 492	7 399
<b>Wholesale trade</b>									
Compensation of employees	3 718	4 063	4 325	4 589	4 963	5 456	5 851	5 934	5 649
Gross operating surplus and gross mixed income	2 031	2 207	2 109	2 279	2 139	1 988	2 333	2 627	2 431
<i>Total</i>	5 749	6 270	6 434	6 868	7 102	7 444	8 184	8 561	8 080
<b>Retail trade</b>									
Compensation of employees	3 761	3 864	3 928	4 461	5 207	5 133	5 545	5 954	6 286
Gross operating surplus and gross mixed income	1 586	1 705	1 685	1 722	1 644	1 574	1 617	1 686	1 588
<i>Total</i>	5 347	5 569	5 613	6 183	6 851	6 707	7 162	7 640	7 874
<b>Accommodation, cafes and restaurants</b>									
Compensation of employees	1 072	1 124	1 239	1 306	1 376	1 486	1 627	1 848	2 081
Gross operating surplus and gross mixed income	412	411	460	487	549	643	742	884	953
<i>Total</i>	1 484	1 535	1 699	1 793	1 925	2 129	2 369	2 732	3 034
<b>Transport and storage</b>									
Compensation of employees	3 076	3 219	3 410	3 641	4 135	3 972	4 308	4 458	4 837
Gross operating surplus and gross mixed income	1 486	1 513	1 556	1 781	1 339	1 656	2 179	1 980	1 924
<i>Total</i>	4 562	4 732	4 966	5 422	5 474	5 628	6 487	6 438	6 761
<b>Communication services</b>									
Compensation of employees	1 776	1 804	1 909	2 105	2 098	2 113	2 103	2 309	2 599
Gross operating surplus and gross mixed income	1 547	1 786	1 859	2 045	2 300	2 550	2 702	2 807	3 070
<i>Total</i>	3 323	3 590	3 768	4 150	4 398	4 663	4 805	5 116	5 669
<b>Finance and insurance</b>									
Compensation of employees	3 063	3 511	3 664	4 275	4 605	5 031	5 419	5 565	6 178
Gross operating surplus and gross mixed income	3 329	3 626	3 061	2 794	2 778	3 832	3 962	4 196	5 104
<i>Total</i>	6 392	7 137	6 725	7 069	7 383	8 863	9 381	9 761	11 282
<b>Property and business services</b>									
Compensation of employees	5 493	5 886	6 826	7 644	8 142	8 776	10 562	12 039	13 753
Gross operating surplus and gross mixed income	4 033	3 923	4 504	4 458	5 058	5 401	5 717	6 154	6 283
<i>Total</i>	9 526	9 809	11 330	12 102	13 200	14 177	16 279	18 193	20 036
<b>Government administration and defence</b>									
Compensation of employees	3 492	3 486	3 558	3 455	3 669	3 678	3 585	3 566	3 495

	1992-93	1993-94	1994-95	1995-96	1996-97	1997-98	1998-99	1999-00	2000-01
	\$m	\$m	\$m	\$m	\$m	\$m	\$m	\$m	\$m
<b>Education</b>									
Compensation of employees	5 070	5 193	5 268	5 196	5 512	5 854	6 251	6 492	7 008
Gross operating surplus and gross mixed income	78	90	99	250	166	161	146	150	183
<i>Total</i>	5 148	5 283	5 367	5 446	5 678	6 015	6 397	6 642	7 191
<b>Health and community services</b>									
Compensation of employees	5 802	5 887	5 947	6 211	6 635	6 700	7 127	7 246	7 926
Gross operating surplus and gross mixed income	972	1 041	1 102	1 198	1 077	1 129	1 201	1 236	1 361
<i>Total</i>	6 774	6 928	7 049	7 409	7 712	7 829	8 328	8 482	9 287
<b>Cultural and recreational services</b>									
Compensation of employees	845	873	1 023	1 220	1 257	1 296	1 381	1 492	1 543
Gross operating surplus and gross mixed income	776	925	878	998	883	1 272	1 161	1 379	1 338
<i>Total</i>	1 621	1 798	1 901	2 218	2 140	2 568	2 542	2 871	2 881
<b>Personal and other services</b>									
Compensation of employees	1 733	1 671	1 771	1 886	2 023	1 958	2 111	2 410	2 418
Gross operating surplus and gross mixed income	387	332	456	650	693	791	780	882	865
<i>Total</i>	2 120	2 003	2 227	2 536	2 716	2 749	2 891	3 292	3 283
<b>Ownership of dwellings</b>									
Gross operating surplus	8 545	8 655	8 927	9 303	10 237	11 197	11 730	12 566	13 090
<b>General government</b>									
Gross operating surplus(a)	1 968	2 045	2 122	2 206	2 232	2 295	2 393	2 481	2 638
<b>All industries</b>									
Compensation of employees	53 600	55 039	57 786	61 718	65 507	68 306	73 706	78 168	83 849
Gross operating surplus and gross mixed income	45 487	47 761	47 996	50 556	51 446	55 055	57 787	62 129	64 296
<b>Total</b>	<b>99 087</b>	<b>102 800</b>	<b>105 782</b>	<b>112 274</b>	<b>116 953</b>	<b>123 361</b>	<b>131 493</b>	<b>140 297</b>	<b>148 145</b>

(a) This item represents the gross operating surplus of all general government

operations in all industries for this State. Data are not available to provide State by industry details of general government gross operating surplus.



	1992-93	1993-94	1994-95	1995-96	1996-97	1997-98	1998-99	1999-00	2000-01
	\$m	\$m	\$m	\$m	\$m	\$m	\$m	\$m	\$m
<b>Agriculture, forestry and fishing</b>									
Compensation of employees	631	670	745	774	957	937	1 109	1 211	1 358
Gross operating surplus and gross mixed income	2 389	2 633	2 551	2 295	2 071	2 215	2 980	3 058	3 301
<i>Total</i>	3 020	3 303	3 296	3 069	3 028	3 152	4 089	4 269	4 659
<b>Mining</b>									
Compensation of employees	1 351	1 282	1 243	1 531	1 583	1 519	1 554	1 425	1 530
Gross operating surplus and gross mixed income	2 866	2 472	2 366	2 816	2 931	3 427	3 626	4 258	4 315
<i>Total</i>	4 217	3 754	3 609	4 347	4 514	4 946	5 180	5 683	5 845
<b>Manufacturing</b>									
Compensation of employees	4 064	4 373	4 956	5 343	5 393	5 538	5 674	5 766	6 366
Gross operating surplus and gross mixed income	2 369	2 839	2 792	2 872	3 036	3 732	3 895	3 761	3 693
<i>Total</i>	6 433	7 212	7 748	8 215	8 429	9 270	9 569	9 527	10 059
<b>Electricity, gas and water supply</b>									
Compensation of employees	491	484	471	536	543	496	490	463	507
Gross operating surplus and gross mixed income	1 289	1 364	1 350	1 348	1 220	1 509	1 744	1 830	1 855
<i>Total</i>	1 780	1 848	1 821	1 884	1 763	2 005	2 234	2 293	2 362
<b>Construction</b>									
Compensation of employees	1 979	1 962	2 088	2 193	2 393	2 403	2 673	2 993	2 904
Gross operating surplus and gross mixed income	2 434	2 699	2 940	3 087	3 381	3 207	3 021	3 306	3 166
<i>Total</i>	4 413	4 661	5 028	5 280	5 774	5 610	5 694	6 299	6 070
<b>Wholesale trade</b>									
Compensation of employees	2 120	2 180	2 492	2 476	2 857	3 141	3 699	3 760	3 629
Gross operating surplus and gross mixed income	1 116	1 216	1 262	1 360	1 249	1 221	1 365	1 494	1 438
<i>Total</i>	3 236	3 396	3 754	3 836	4 106	4 362	5 064	5 254	5 067
<b>Retail trade</b>									
Compensation of employees	2 990	2 934	3 204	3 574	4 251	4 284	4 632	5 039	5 393
Gross operating surplus and gross mixed income	1 237	1 332	1 429	1 455	1 359	1 389	1 343	1 360	1 330
<i>Total</i>	4 227	4 266	4 633	5 029	5 610	5 673	5 975	6 399	6 723
<b>Accommodation, cafes and restaurants</b>									
Compensation of employees	1 141	1 235	1 444	1 493	1 694	1 836	2 005	2 191	2 501
Gross operating surplus and gross mixed income	443	466	551	603	686	811	846	965	1 120
<i>Total</i>	1 584	1 701	1 995	2 096	2 380	2 647	2 851	3 156	3 621
<b>Transport and storage</b>									
Compensation of employees	2 080	2 080	2 399	2 543	2 943	2 778	2 849	2 886	3 174
Gross operating surplus and gross mixed income	1 631	1 932	2 101	2 317	2 027	2 201	2 024	2 244	2 163
<i>Total</i>	3 711	4 012	4 500	4 860	4 970	4 979	4 873	5 130	5 337
<b>Communication services</b>									
Compensation of employees	868	861	939	1 014	1 044	1 102	1 137	1 133	1 293
Gross operating surplus and gross mixed income	979	1 017	1 168	1 194	1 308	1 542	1 674	1 779	1 709
<i>Total</i>	1 847	1 878	2 107	2 208	2 352	2 644	2 811	2 912	3 002
<b>Finance and insurance</b>									
Compensation of employees	1 417	1 476	1 628	1 823	2 030	2 066	2 051	1 972	2 219
Gross operating surplus and gross mixed income	1 821	1 826	1 709	1 379	1 489	1 973	1 702	1 889	2 457
<i>Total</i>	3 238	3 302	3 337	3 202	3 519	4 039	3 753	3 861	4 676
<b>Property and business services</b>									
Compensation of employees	3 084	3 038	3 507	3 786	3 990	4 389	5 019	5 437	6 296
Gross operating surplus and gross mixed income	2 372	2 143	2 260	2 114	2 437	2 529	2 742	3 101	3 343
<i>Total</i>	5 456	5 181	5 767	5 900	6 427	6 918	7 761	8 538	9 639
<b>Government administration and defence</b>									
Compensation of employees	2 364	2 537	2 680	2 946	3 198	3 419	3 487	3 686	3 662

	1992-93	1993-94	1994-95	1995-96	1996-97	1997-98	1998-99	1999-00	2000-01
	\$m	\$m	\$m	\$m	\$m	\$m	\$m	\$m	\$m
<b>Education</b>									
Compensation of employees	2 881	3 008	3 093	3 313	3 608	3 864	3 909	4 079	4 463
Gross operating surplus and gross mixed income	43	51	59	152	103	98	90	93	114
<i>Total</i>	2 924	3 059	3 152	3 465	3 711	3 962	3 999	4 172	4 577
<b>Health and community services</b>									
Compensation of employees	2 960	3 240	3 382	3 607	4 030	4 273	4 608	4 498	4 988
Gross operating surplus and gross mixed income	539	608	663	745	692	725	775	804	887
<i>Total</i>	3 499	3 848	4 045	4 352	4 722	4 998	5 383	5 302	5 875
<b>Cultural and recreational services</b>									
Compensation of employees	449	442	497	634	670	639	683	676	709
Gross operating surplus and gross mixed income	497	552	544	558	552	684	712	755	780
<i>Total</i>	946	994	1 041	1 192	1 222	1 323	1 395	1 431	1 489
<b>Personal and other services</b>									
Compensation of employees	1 029	1 050	1 261	1 357	1 480	1 579	1 744	1 959	1 993
Gross operating surplus and gross mixed income	209	192	215	304	410	466	462	499	503
<i>Total</i>	1 238	1 242	1 476	1 661	1 890	2 045	2 206	2 458	2 496
<b>Ownership of dwellings</b>									
Gross operating surplus	5 464	5 854	6 224	6 553	7 035	7 445	7 719	8 126	8 356
<b>General government</b>									
Gross operating surplus(a)	1 870	1 947	2 020	2 132	2 202	2 310	2 446	2 602	2 835
<b>All industries</b>									
Compensation of employees	31 899	32 852	36 029	38 943	42 664	44 263	47 323	49 174	52 985
Gross operating surplus and gross mixed income	29 568	31 143	32 204	33 284	34 188	37 484	39 166	41 924	43 365
<b>Total</b>	<b>61 467</b>	<b>63 995</b>	<b>68 233</b>	<b>72 227</b>	<b>76 852</b>	<b>81 747</b>	<b>86 489</b>	<b>91 098</b>	<b>96 350</b>

(a) This item represents the gross operating surplus of all general government

operations in all industries for this State. Data are not available to provide State by industry details of general government gross operating surplus.

	1992-93	1993-94	1994-95	1995-96	1996-97	1997-98	1998-99	1999-00	2000-01
	\$m	\$m	\$m	\$m	\$m	\$m	\$m	\$m	\$m
<b>Agriculture, forestry and fishing</b>									
Compensation of employees	249	264	272	289	338	342	384	412	449
Gross operating surplus and gross mixed income	1 053	1 139	1 080	1 659	1 443	1 730	1 577	1 353	1 413
Total	1 302	1 403	1 352	1 948	1 781	2 072	1 961	1 765	1 862
<b>Mining</b>									
Compensation of employees	148	148	155	190	188	181	184	179	186
Gross operating surplus and gross mixed income	749	662	654	800	606	746	643	912	792
Total	897	810	809	990	794	927	827	1 091	978
<b>Manufacturing</b>									
Compensation of employees	2 798	2 810	2 839	3 092	3 077	3 101	3 153	3 457	3 705
Gross operating surplus and gross mixed income	1 799	2 118	2 122	2 145	2 305	2 844	2 412	2 160	1 967
Total	4 597	4 928	4 961	5 237	5 382	5 945	5 565	5 617	5 672
<b>Electricity, gas and water supply</b>									
Compensation of employees	344	312	294	286	260	273	273	290	307
Gross operating surplus and gross mixed income	606	456	582	656	879	987	1 021	878	909
Total	950	768	876	942	1 139	1 260	1 294	1 168	1 216
<b>Construction</b>									
Compensation of employees	717	766	799	834	861	923	906	1 033	969
Gross operating surplus and gross mixed income	737	753	853	880	933	1 075	952	1 186	1 052
Total	1 454	1 519	1 652	1 714	1 794	1 998	1 858	2 219	2 021
<b>Wholesale trade</b>									
Compensation of employees	1 072	1 069	1 024	1 086	1 115	1 267	1 193	1 250	1 167
Gross operating surplus and gross mixed income	375	413	409	450	401	389	427	465	443
Total	1 447	1 482	1 433	1 536	1 516	1 656	1 620	1 715	1 610
<b>Retail trade</b>									
Compensation of employees	1 059	1 083	1 153	1 215	1 384	1 508	1 531	1 513	1 566
Gross operating surplus and gross mixed income	577	627	643	665	604	606	581	585	566
Total	1 636	1 710	1 796	1 880	1 988	2 114	2 112	2 098	2 132
<b>Accommodation, cafes and restaurants</b>									
Compensation of employees	355	353	370	397	419	466	519	573	632
Gross operating surplus and gross mixed income	145	153	182	230	274	306	330	369	453
Total	500	506	552	627	693	772	849	942	1 085
<b>Transport and storage</b>									
Compensation of employees	1 042	1 026	999	1 030	1 100	932	996	1 046	1 096
Gross operating surplus and gross mixed income	511	528	582	550	485	483	608	628	606
Total	1 553	1 554	1 581	1 580	1 585	1 415	1 604	1 674	1 702
<b>Communication services</b>									
Compensation of employees	374	421	416	434	466	510	485	475	524
Gross operating surplus and gross mixed income	329	343	378	422	454	520	537	585	578
Total	703	764	794	856	920	1 030	1 022	1 060	1 102
<b>Finance and insurance</b>									
Compensation of employees	820	859	805	791	839	937	956	975	1 061
Gross operating surplus and gross mixed income	897	824	825	664	716	838	762	1 005	1 266
Total	1 717	1 683	1 630	1 455	1 555	1 775	1 718	1 980	2 327
<b>Property and business services</b>									
Compensation of employees	1 234	1 535	1 715	1 781	1 846	2 077	2 274	2 227	2 494
Gross operating surplus and gross mixed income	918	845	871	753	867	936	1 109	1 251	1 324
Total	2 152	2 380	2 586	2 534	2 713	3 013	3 383	3 478	3 818
<b>Government administration and defence</b>									
Compensation of employees	825	954	840	920	1 014	1 112	1 113	1 208	1 161

	1992-93	1993-94	1994-95	1995-96	1996-97	1997-98	1998-99	1999-00	2000-01
	\$m	\$m	\$m	\$m	\$m	\$m	\$m	\$m	\$m
<b>Education</b>									
Compensation of employees	1 447	1 548	1 497	1 538	1 704	1 739	1 753	1 816	1 922
Gross operating surplus and gross mixed income	20	22	25	64	42	41	36	38	46
<i>Total</i>	1 467	1 570	1 522	1 602	1 746	1 780	1 789	1 854	1 968
<b>Health and community services</b>									
Compensation of employees	1 833	1 960	2 078	2 253	2 239	2 223	2 310	2 299	2 465
Gross operating surplus and gross mixed income	261	276	284	300	267	274	298	314	344
<i>Total</i>	2 094	2 236	2 362	2 553	2 506	2 497	2 608	2 613	2 809
<b>Cultural and recreational services</b>									
Compensation of employees	211	256	276	329	341	343	365	384	389
Gross operating surplus and gross mixed income	180	189	180	198	187	217	245	261	229
<i>Total</i>	391	445	456	527	528	560	610	645	618
<b>Personal and other services</b>									
Compensation of employees	675	718	747	730	721	701	708	819	806
Gross operating surplus and gross mixed income	124	109	160	231	228	263	250	288	279
<i>Total</i>	799	827	907	961	949	964	958	1 107	1 085
<b>Ownership of dwellings</b>									
Gross operating surplus	2 603	2 689	2 734	2 784	3 019	3 206	3 407	3 540	3 659
<b>General government</b>									
Gross operating surplus(a)	685	708	731	759	771	797	822	848	894
<b>All industries</b>									
Compensation of employees	15 203	16 082	16 279	17 195	17 912	18 635	19 103	19 956	20 899
Gross operating surplus and gross mixed income	12 569	12 854	13 295	14 210	14 481	16 258	16 017	16 666	16 820
<b>Total</b>	<b>27 772</b>	<b>28 936</b>	<b>29 574</b>	<b>31 405</b>	<b>32 393</b>	<b>34 893</b>	<b>35 120</b>	<b>36 622</b>	<b>37 719</b>

(a) This item represents the gross operating surplus of all general government

operations in all industries for this State. Data are not available to provide State by industry details of general government gross operating surplus.

	1992-93	1993-94	1994-95	1995-96	1996-97	1997-98	1998-99	1999-00	2000-01
	\$m	\$m	\$m	\$m	\$m	\$m	\$m	\$m	\$m
<b>Agriculture, forestry and fishing</b>									
Compensation of employees	353	400	431	491	556	589	678	708	771
Gross operating surplus and gross mixed income	1 617	1 662	1 873	2 224	1 911	2 159	1 480	1 971	1 992
<i>Total</i>	1 970	2 062	2 304	2 715	2 467	2 748	2 158	2 679	2 763
<b>Mining</b>									
Compensation of employees	1 266	1 467	1 586	1 774	1 926	1 896	1 883	2 064	2 152
Gross operating surplus and gross mixed income	5 629	5 754	6 825	7 985	8 117	8 733	9 290	10 395	13 297
<i>Total</i>	6 895	7 221	8 411	9 759	10 043	10 629	11 173	12 459	15 449
<b>Manufacturing</b>									
Compensation of employees	2 005	2 156	2 275	2 625	2 722	2 736	3 028	3 345	3 586
Gross operating surplus and gross mixed income	1 594	1 733	1 886	1 939	2 046	2 467	2 185	2 437	2 765
<i>Total</i>	3 599	3 889	4 161	4 564	4 768	5 203	5 213	5 782	6 351
<b>Electricity, gas and water supply</b>									
Compensation of employees	356	360	332	345	314	324	316	332	353
Gross operating surplus and gross mixed income	877	912	910	1 008	1 300	1 446	1 392	1 555	1 575
<i>Total</i>	1 233	1 272	1 242	1 353	1 614	1 770	1 708	1 887	1 928
<b>Construction</b>									
Compensation of employees	1 365	1 459	1 468	1 471	1 617	1 745	1 904	2 208	2 080
Gross operating surplus and gross mixed income	1 423	1 728	1 823	2 086	2 291	2 460	2 322	2 304	2 025
<i>Total</i>	2 788	3 187	3 291	3 557	3 908	4 205	4 226	4 512	4 105
<b>Wholesale trade</b>									
Compensation of employees	1 350	1 525	1 628	1 630	1 692	1 772	1 710	1 659	1 555
Gross operating surplus and gross mixed income	778	889	879	968	876	848	951	1 048	961
<i>Total</i>	2 128	2 414	2 507	2 598	2 568	2 620	2 661	2 707	2 516
<b>Retail trade</b>									
Compensation of employees	1 359	1 514	1 602	1 766	1 956	2 035	2 187	2 347	2 439
Gross operating surplus and gross mixed income	735	831	848	881	811	813	798	814	756
<i>Total</i>	2 094	2 345	2 450	2 647	2 767	2 848	2 985	3 161	3 195
<b>Accommodation, cafes and restaurants</b>									
Compensation of employees	412	436	481	495	531	594	704	807	894
Gross operating surplus and gross mixed income	167	176	209	239	242	273	280	286	309
<i>Total</i>	579	612	690	734	773	867	984	1 093	1 203
<b>Transport and storage</b>									
Compensation of employees	1 209	1 230	1 357	1 368	1 577	1 548	1 769	1 922	2 053
Gross operating surplus and gross mixed income	866	925	953	1 033	878	1 038	1 081	1 105	1 069
<i>Total</i>	2 075	2 155	2 310	2 401	2 455	2 586	2 850	3 027	3 122
<b>Communication services</b>									
Compensation of employees	417	430	436	437	434	464	467	435	482
Gross operating surplus and gross mixed income	641	666	782	851	925	1 138	1 197	1 282	1 243
<i>Total</i>	1 058	1 096	1 218	1 288	1 359	1 602	1 664	1 717	1 725
<b>Finance and insurance</b>									
Compensation of employees	804	861	853	815	815	937	1 018	1 026	1 121
Gross operating surplus and gross mixed income	1 059	1 213	974	767	737	1 035	1 094	1 217	1 458
<i>Total</i>	1 863	2 074	1 827	1 582	1 552	1 972	2 112	2 243	2 579
<b>Property and business services</b>									
Compensation of employees	2 026	2 253	2 610	2 730	3 033	3 491	3 692	4 194	4 716
Gross operating surplus and gross mixed income	1 389	1 358	1 507	1 420	1 542	1 617	1 687	1 788	1 782
<i>Total</i>	3 415	3 611	4 117	4 150	4 575	5 108	5 379	5 982	6 498
<b>Government administration and defence</b>									
Compensation of employees	1 115	1 172	1 232	1 291	1 333	1 434	1 444	1 566	1 511

	1992-93	1993-94	1994-95	1995-96	1996-97	1997-98	1998-99	1999-00	2000-01
	\$m	\$m	\$m	\$m	\$m	\$m	\$m	\$m	\$m
<b>Education</b>									
Compensation of employees	1 521	1 701	1 731	1 709	1 788	1 935	2 022	2 055	2 184
Gross operating surplus and gross mixed income	25	30	35	90	62	60	54	56	69
<i>Total</i>	1 546	1 731	1 766	1 799	1 850	1 995	2 076	2 111	2 253
<b>Health and community services</b>									
Compensation of employees	1 924	2 059	2 227	2 538	2 694	2 628	2 974	3 083	3 320
Gross operating surplus and gross mixed income	279	303	335	366	330	342	385	411	461
<i>Total</i>	2 203	2 362	2 562	2 904	3 024	2 970	3 359	3 494	3 781
<b>Cultural and recreational services</b>									
Compensation of employees	223	256	277	342	358	378	413	439	447
Gross operating surplus and gross mixed income	293	327	337	295	353	404	402	451	406
<i>Total</i>	516	583	614	637	711	782	815	890	853
<b>Personal and other services</b>									
Compensation of employees	803	838	906	899	908	908	996	1 127	1 113
Gross operating surplus and gross mixed income	133	118	161	233	249	282	274	308	303
<i>Total</i>	936	956	1 067	1 132	1 157	1 190	1 270	1 435	1 416
<b>Ownership of dwellings</b>									
Gross operating surplus	2 663	2 822	3 029	3 206	3 476	3 739	3 961	4 314	4 535
<b>General government</b>									
Gross operating surplus(a)	869	894	918	961	975	1 013	1 058	1 100	1 189
<b>All industries</b>									
Compensation of employees	18 508	20 117	21 432	22 726	24 254	25 414	27 205	29 317	30 777
Gross operating surplus and gross mixed income	21 037	22 341	24 284	26 552	27 121	29 867	29 891	32 842	36 195
<b>Total</b>	<b>39 545</b>	<b>42 458</b>	<b>45 716</b>	<b>49 278</b>	<b>51 375</b>	<b>55 281</b>	<b>57 096</b>	<b>62 159</b>	<b>66 972</b>

(a) This item represents the gross operating surplus of all general government

operations in all industries for this State. Data are not available to provide State by industry details of general government gross operating surplus.

	1992-93	1993-94	1994-95	1995-96	1996-97	1997-98	1998-99	1999-00	2000-01
	\$m	\$m	\$m	\$m	\$m	\$m	\$m	\$m	\$m
<b>Agriculture, forestry and fishing</b>									
Compensation of employees	118	123	142	160	189	195	238	206	219
Gross operating surplus and gross mixed income	315	356	300	238	314	402	434	412	465
<i>Total</i>	433	479	442	398	503	597	672	618	684
<b>Mining</b>									
Compensation of employees	110	120	131	151	148	113	118	106	109
Gross operating surplus and gross mixed income	58	59	128	151	121	92	115	112	108
<i>Total</i>	168	179	259	302	269	205	233	218	217
<b>Manufacturing</b>									
Compensation of employees	729	680	746	775	780	815	863	882	917
Gross operating surplus and gross mixed income	462	510	542	599	591	599	688	663	651
<i>Total</i>	1 191	1 190	1 288	1 374	1 371	1 414	1 551	1 545	1 568
<b>Electricity, gas and water supply</b>									
Compensation of employees	159	142	124	121	107	101	102	98	103
Gross operating surplus and gross mixed income	304	309	336	376	411	421	495	533	543
<i>Total</i>	463	451	460	497	518	522	597	631	646
<b>Construction</b>									
Compensation of employees	224	217	253	236	237	223	231	211	196
Gross operating surplus and gross mixed income	291	292	324	364	392	322	277	307	289
<i>Total</i>	515	509	577	600	629	545	508	518	485
<b>Wholesale trade</b>									
Compensation of employees	227	247	254	254	238	249	257	245	226
Gross operating surplus and gross mixed income	137	147	143	152	139	133	142	151	141
<i>Total</i>	364	394	397	406	377	382	399	396	367
<b>Retail trade</b>									
Compensation of employees	389	381	383	422	432	467	491	460	471
Gross operating surplus and gross mixed income	237	251	250	253	235	233	217	214	203
<i>Total</i>	626	632	633	675	667	700	708	674	674
<b>Accommodation, cafes and restaurants</b>									
Compensation of employees	156	140	162	180	184	204	201	212	232
Gross operating surplus and gross mixed income	48	55	67	66	72	75	76	84	89
<i>Total</i>	204	195	229	246	256	279	277	296	321
<b>Transport and storage</b>									
Compensation of employees	249	234	235	246	255	228	250	266	296
Gross operating surplus and gross mixed income	165	167	184	214	152	163	189	194	189
<i>Total</i>	414	401	419	460	407	391	439	460	485
<b>Communication services</b>									
Compensation of employees	116	108	110	109	116	122	125	126	138
Gross operating surplus and gross mixed income	93	93	113	109	117	143	166	177	172
<i>Total</i>	209	201	223	218	233	265	291	303	310
<b>Finance and insurance</b>									
Compensation of employees	174	173	198	209	231	251	228	242	261
Gross operating surplus and gross mixed income	276	246	187	148	153	197	231	245	237
<i>Total</i>	450	419	385	357	384	448	459	487	498
<b>Property and business services</b>									
Compensation of employees	286	272	281	309	323	324	299	290	322
Gross operating surplus and gross mixed income	166	151	167	182	187	179	216	235	239
<i>Total</i>	452	423	448	491	510	503	515	525	561
<b>Government administration and defence</b>									
Compensation of employees	372	394	430	460	459	496	525	559	532

	1992-93	1993-94	1994-95	1995-96	1996-97	1997-98	1998-99	1999-00	2000-01
	\$m	\$m	\$m	\$m	\$m	\$m	\$m	\$m	\$m
<b>Education</b>									
Compensation of employees	409	435	448	460	488	510	532	508	532
Gross operating surplus and gross mixed income	6	7	8	18	12	11	10	10	12
<i>Total</i>	415	442	456	478	500	521	542	518	544
<b>Health and community services</b>									
Compensation of employees	528	546	594	665	706	709	744	767	814
Gross operating surplus and gross mixed income	80	89	98	112	100	104	114	116	135
<i>Total</i>	608	635	692	777	806	813	858	883	949
<b>Cultural and recreational services</b>									
Compensation of employees	67	56	60	69	79	80	79	82	82
Gross operating surplus and gross mixed income	73	64	71	59	63	61	66	58	63
<i>Total</i>	140	120	131	128	142	141	145	140	145
<b>Personal and other services</b>									
Compensation of employees	155	159	170	179	186	197	195	207	202
Gross operating surplus and gross mixed income	22	19	23	33	44	48	47	51	51
<i>Total</i>	177	178	193	212	230	245	242	258	253
<b>Ownership of dwellings</b>									
Gross operating surplus	673	709	741	776	850	894	896	916	923
<b>General government</b>									
Gross operating surplus(a)	287	292	297	306	306	310	318	322	335
<b>All industries</b>									
Compensation of employees	4 468	4 427	4 721	5 005	5 158	5 284	5 478	5 467	5 652
Gross operating surplus and gross mixed income	3 693	3 816	3 979	4 156	4 259	4 387	4 697	4 800	4 845
<b>Total</b>	<b>8 161</b>	<b>8 243</b>	<b>8 700</b>	<b>9 161</b>	<b>9 417</b>	<b>9 671</b>	<b>10 175</b>	<b>10 267</b>	<b>10 497</b>

(a) This item represents the gross operating surplus of all general government

operations in all industries for this State. Data are not available to provide State by industry details of general government gross operating surplus.



	1992-93	1993-94	1994-95	1995-96	1996-97	1997-98	1998-99	1999-00	2000-01
	\$m	\$m	\$m	\$m	\$m	\$m	\$m	\$m	\$m
<b>Agriculture, forestry and fishing</b>									
Compensation of employees	27	29	43	48	49	50	62	73	82
Gross operating surplus and gross mixed income	126	170	182	173	177	100	144	172	211
<i>Total</i>	153	199	225	221	226	150	206	245	293
<b>Mining</b>									
Compensation of employees	120	120	135	147	166	177	196	196	211
Gross operating surplus and gross mixed income	982	638	639	732	754	701	604	1 339	2 409
<i>Total</i>	1 102	758	774	879	920	878	800	1 535	2 620
<b>Manufacturing</b>									
Compensation of employees	125	131	143	148	150	155	164	178	198
Gross operating surplus and gross mixed income	69	91	77	98	89	104	85	90	97
<i>Total</i>	194	222	220	246	239	259	249	268	295
<b>Electricity, gas and water supply</b>									
Compensation of employees	42	41	42	49	39	39	46	38	42
Gross operating surplus and gross mixed income	63	59	50	56	68	73	102	91	93
<i>Total</i>	105	100	92	105	107	112	148	129	135
<b>Construction</b>									
Compensation of employees	156	170	198	201	184	170	188	177	172
Gross operating surplus and gross mixed income	115	153	147	153	160	200	359	181	95
<i>Total</i>	271	323	345	354	344	370	547	358	267
<b>Wholesale trade</b>									
Compensation of employees	75	80	93	100	126	127	124	121	117
Gross operating surplus and gross mixed income	59	63	64	72	62	58	64	72	66
<i>Total</i>	134	143	157	172	188	185	188	193	183
<b>Retail trade</b>									
Compensation of employees	156	181	194	212	233	240	264	249	268
Gross operating surplus and gross mixed income	91	97	101	108	94	91	88	91	86
<i>Total</i>	247	278	295	320	327	331	352	340	354
<b>Accommodation, cafes and restaurants</b>									
Compensation of employees	98	95	109	113	123	133	154	151	173
Gross operating surplus and gross mixed income	35	37	45	48	52	56	61	55	65
<i>Total</i>	133	132	154	161	175	189	215	206	238
<b>Transport and storage</b>									
Compensation of employees	98	102	115	117	158	156	155	149	165
Gross operating surplus and gross mixed income	95	106	114	103	107	147	199	211	209
<i>Total</i>	193	208	229	220	265	303	354	360	374
<b>Communication services</b>									
Compensation of employees	57	64	73	69	81	84	95	94	108
Gross operating surplus and gross mixed income	56	58	78	71	83	110	122	134	133
<i>Total</i>	113	122	151	140	164	194	217	228	241
<b>Finance and insurance</b>									
Compensation of employees	52	50	56	63	76	88	86	95	107
Gross operating surplus and gross mixed income	88	75	55	59	57	82	69	88	101
<i>Total</i>	140	125	111	122	133	170	155	183	208
<b>Property and business services</b>									
Compensation of employees	205	215	272	281	288	307	385	426	495
Gross operating surplus and gross mixed income	79	75	100	119	117	108	123	131	111
<i>Total</i>	284	290	372	400	405	415	508	557	606
<b>Government administration and defence</b>									
Compensation of employees	303	338	364	392	438	519	581	636	634

	1992-93	1993-94	1994-95	1995-96	1996-97	1997-98	1998-99	1999-00	2000-01
	\$m	\$m	\$m	\$m	\$m	\$m	\$m	\$m	\$m
<b>Education</b>									
Compensation of employees	205	221	237	258	286	313	353	342	376
Gross operating surplus and gross mixed income	2	2	2	6	4	4	4	4	4
<i>Total</i>	207	223	239	264	290	317	357	346	380
<b>Health and community services</b>									
Compensation of employees	173	212	247	291	325	321	367	396	441
Gross operating surplus and gross mixed income	21	25	27	31	28	31	33	34	38
<i>Total</i>	194	237	274	322	353	352	400	430	479
<b>Cultural and recreational services</b>									
Compensation of employees	51	58	76	93	107	112	110	102	107
Gross operating surplus and gross mixed income	43	47	48	53	49	68	73	87	94
<i>Total</i>	94	105	124	146	156	180	183	189	201
<b>Personal and other services</b>									
Compensation of employees	102	101	121	134	151	161	174	181	185
Gross operating surplus and gross mixed income	4	3	4	5	10	11	11	13	12
<i>Total</i>	106	104	125	139	161	172	185	194	197
<b>Ownership of dwellings</b>									
Gross operating surplus	238	253	267	290	339	352	371	399	406
<b>General government</b>									
Gross operating surplus(a)	158	164	171	181	188	200	207	212	220
<b>All industries</b>									
Compensation of employees	2 045	2 208	2 518	2 716	2 980	3 152	3 504	3 604	3 881
Gross operating surplus and gross mixed income	2 324	2 116	2 171	2 358	2 438	2 496	2 719	3 404	4 450
<b>Total</b>	<b>4 369</b>	<b>4 324</b>	<b>4 689</b>	<b>5 074</b>	<b>5 418</b>	<b>5 648</b>	<b>6 223</b>	<b>7 008</b>	<b>8 331</b>

(a) This item represents the gross operating surplus of all general government

operations in all industries for this State. Data are not available to provide State by industry details of general government gross operating surplus.

	1992-93	1993-94	1994-95	1995-96	1996-97	1997-98	1998-99	1999-00	2000-01
	\$m	\$m	\$m	\$m	\$m	\$m	\$m	\$m	\$m
<b>Agriculture, forestry and fishing</b>									
Compensation of employees	2	2	2	4	3	4	4	5	6
Gross operating surplus and gross mixed income	18	16	13	6	12	10	10	10	9
<i>Total</i>	20	18	15	10	15	14	14	15	15
<b>Mining</b>									
Compensation of employees	5	5	4	3	2	2	2	2	2
Gross operating surplus and gross mixed income	2	2	—	—	—	—	—	—	—
<i>Total</i>	7	7	4	3	2	2	2	2	2
<b>Manufacturing</b>									
Compensation of employees	126	122	140	154	140	127	118	135	152
Gross operating surplus and gross mixed income	58	67	66	65	75	66	79	78	77
<i>Total</i>	184	189	206	219	215	193	197	213	229
<b>Electricity, gas and water supply</b>									
Compensation of employees	64	77	69	76	82	78	81	74	82
Gross operating surplus and gross mixed income	106	99	113	114	108	158	190	218	227
<i>Total</i>	170	176	182	190	190	236	271	292	309
<b>Construction</b>									
Compensation of employees	250	277	297	336	358	319	363	429	423
Gross operating surplus and gross mixed income	274	263	283	278	292	259	286	363	297
<i>Total</i>	524	540	580	614	650	578	649	792	720
<b>Wholesale trade</b>									
Compensation of employees	140	152	152	153	151	155	174	188	185
Gross operating surplus and gross mixed income	49	54	51	55	51	50	54	61	62
<i>Total</i>	189	206	203	208	202	205	228	249	247
<b>Retail trade</b>									
Compensation of employees	247	241	266	282	320	320	342	365	397
Gross operating surplus and gross mixed income	154	167	163	164	156	158	150	157	160
<i>Total</i>	401	408	429	446	476	478	492	522	557
<b>Accommodation, cafes and restaurants</b>									
Compensation of employees	105	127	122	132	124	149	180	179	208
Gross operating surplus and gross mixed income	42	43	51	54	59	71	76	80	104
<i>Total</i>	147	170	173	186	183	220	256	259	312
<b>Transport and storage</b>									
Compensation of employees	150	164	163	173	195	178	198	193	216
Gross operating surplus and gross mixed income	90	87	86	92	76	105	138	151	150
<i>Total</i>	240	251	249	265	271	283	336	344	366
<b>Communication services</b>									
Compensation of employees	81	107	113	107	102	110	111	101	117
Gross operating surplus and gross mixed income	118	149	151	147	164	204	214	207	176
<i>Total</i>	199	256	264	254	266	314	325	308	293
<b>Finance and insurance</b>									
Compensation of employees	146	175	167	194	186	216	237	273	313
Gross operating surplus and gross mixed income	182	175	146	139	91	157	124	201	206
<i>Total</i>	328	350	313	333	277	373	361	474	519
<b>Property and business services</b>									
Compensation of employees	647	722	687	693	685	799	862	862	1 015
Gross operating surplus and gross mixed income	389	302	335	384	484	556	602	677	746
<i>Total</i>	1 036	1 024	1 022	1 077	1 169	1 355	1 464	1 539	1 761
<b>Government administration and defence</b>									
Compensation of employees	2 095	2 298	2 501	2 593	2 783	2 868	3 037	3 082	3 115

— nil or rounded to zero (including null cells)

	1992-93	1993-94	1994-95	1995-96	1996-97	1997-98	1998-99	1999-00	2000-01
	\$m	\$m	\$m	\$m	\$m	\$m	\$m	\$m	\$m
<b>Education</b>									
Compensation of employees	565	516	509	553	607	623	651	628	699
Gross operating surplus and gross mixed income	7	8	9	22	14	13	11	12	15
<i>Total</i>	572	524	518	575	621	636	662	640	714
<b>Health and community services</b>									
Compensation of employees	293	329	374	402	439	473	533	581	655
Gross operating surplus and gross mixed income	56	59	63	67	61	63	68	70	76
<i>Total</i>	349	388	437	469	500	536	601	651	731
<b>Cultural and recreational services</b>									
Compensation of employees	160	169	191	230	236	231	228	245	261
Gross operating surplus and gross mixed income	40	49	51	52	47	62	67	67	73
<i>Total</i>	200	218	242	282	283	293	295	312	334
<b>Personal and other services</b>									
Compensation of employees	233	250	242	251	288	314	339	336	348
Gross operating surplus and gross mixed income	20	18	26	37	41	45	45	50	49
<i>Total</i>	253	268	268	288	329	359	384	386	397
<b>Ownership of dwellings</b>									
Gross operating surplus	779	807	821	814	847	865	872	937	1 016
<b>General government</b>									
Gross operating surplus(a)	491	515	534	555	558	564	589	606	650
<b>All industries</b>									
Compensation of employees	5 309	5 733	5 999	6 336	6 701	6 966	7 460	7 678	8 194
Gross operating surplus and gross mixed income	2 875	2 880	2 962	3 045	3 136	3 406	3 575	3 945	4 093
<b>Total</b>	<b>8 184</b>	<b>8 613</b>	<b>8 961</b>	<b>9 381</b>	<b>9 837</b>	<b>10 372</b>	<b>11 035</b>	<b>11 623</b>	<b>12 287</b>

(a) This item represents the gross operating surplus of all general government

operations in all industries for this State. Data are not available to provide State by industry details of general government gross operating surplus.

	1992-93	1993-94	1994-95	1995-96	1996-97	1997-98	1998-99	1999-00	2000-01
	\$m	\$m	\$m	\$m	\$m	\$m	\$m	\$m	\$m
<b>Agriculture, forestry and fishing</b>									
Compensation of employees	2 939	3 144	3 435	3 664	4 045	4 083	4 798	5 104	5 634
Gross operating surplus and gross mixed income	11 108	11 989	10 636	12 794	12 697	12 566	12 666	14 398	15 222
<i>Total</i>	14 047	15 133	14 071	16 458	16 742	16 649	17 464	19 502	20 856
<b>Mining</b>									
Compensation of employees	4 732	4 859	4 955	5 764	5 926	5 949	5 905	5 791	6 115
Gross operating surplus and gross mixed income	14 967	14 198	14 990	16 913	16 728	17 850	18 081	21 784	24 889
<i>Total</i>	19 699	19 057	19 945	22 677	22 654	23 799	23 986	27 575	31 004
<b>Manufacturing</b>									
Compensation of employees	30 649	31 480	33 342	36 245	36 311	37 571	38 690	40 830	44 382
Gross operating surplus and gross mixed income	20 845	23 652	24 485	25 000	26 698	30 134	30 351	30 237	30 691
<i>Total</i>	51 494	55 132	57 827	61 245	63 009	67 705	69 041	71 067	75 073
<b>Electricity, gas and water supply</b>									
Compensation of employees	4 441	4 138	3 745	3 812	3 448	3 234	3 221	3 230	3 478
Gross operating surplus and gross mixed income	8 992	9 132	9 090	8 949	9 491	10 102	10 580	11 868	12 399
<i>Total</i>	13 433	13 270	12 835	12 761	12 939	13 336	13 801	15 098	15 877
<b>Construction</b>									
Compensation of employees	10 632	11 210	12 105	12 402	13 034	13 644	14 944	16 866	16 125
Gross operating surplus and gross mixed income	11 380	12 436	13 851	15 064	16 202	16 775	16 945	18 057	16 394
<i>Total</i>	22 012	23 647	25 956	27 466	29 236	30 419	31 889	34 923	32 519
<b>Wholesale trade</b>									
Compensation of employees	14 997	15 813	16 296	17 073	18 495	19 942	20 911	21 364	20 323
Gross operating surplus and gross mixed income	6 933	7 544	7 478	8 213	7 542	7 193	8 061	8 889	8 380
<i>Total</i>	21 930	23 357	23 774	25 286	26 037	27 135	28 972	30 253	28 703
<b>Retail trade</b>									
Compensation of employees	15 130	15 803	16 546	18 161	20 594	21 339	23 032	23 955	25 277
Gross operating surplus and gross mixed income	6 737	7 255	7 450	7 724	7 199	7 122	6 945	7 075	6 801
<i>Total</i>	21 867	23 058	23 996	25 885	27 793	28 461	29 977	31 030	32 078
<b>Accommodation, cafes and restaurants</b>									
Compensation of employees	5 412	5 709	6 433	6 764	7 335	7 981	8 711	9 543	10 744
Gross operating surplus and gross mixed income	2 191	2 282	2 675	2 986	3 265	3 736	4 082	4 510	5 158
<i>Total</i>	7 603	7 991	9 108	9 750	10 600	11 717	12 793	14 053	15 902
<b>Transport and storage</b>									
Compensation of employees	12 558	13 097	14 211	14 710	16 833	16 051	16 985	17 467	18 923
Gross operating surplus and gross mixed income	7 095	7 645	8 157	8 350	7 374	8 515	8 746	9 012	8 563
<i>Total</i>	19 653	20 737	22 368	23 060	24 207	24 566	25 731	26 479	27 486
<b>Communication services</b>									
Compensation of employees	5 794	5 832	6 181	6 801	7 005	7 284	7 299	7 452	8 380
Gross operating surplus and gross mixed income	5 780	6 101	6 704	7 278	8 080	9 363	9 908	10 327	10 552
<i>Total</i>	11 574	11 933	12 885	14 079	15 085	16 647	17 207	17 779	18 932
<b>Finance and insurance</b>									
Compensation of employees	11 982	12 628	13 314	14 855	15 959	17 302	18 420	19 443	21 555
Gross operating surplus and gross mixed income	12 391	13 004	11 648	10 640	10 663	13 837	13 595	15 745	18 486
<i>Total</i>	24 373	25 632	24 962	25 495	26 622	31 139	32 015	35 188	40 041
<b>Property and business services</b>									
Compensation of employees	21 445	22 964	26 193	28 909	31 242	34 369	39 643	43 423	49 549
Gross operating surplus and gross mixed income	15 844	15 090	16 744	16 186	18 340	19 290	20 207	22 183	23 022
<i>Total</i>	37 289	38 055	42 937	45 095	49 582	53 659	59 850	65 606	72 571
<b>Government administration and defence</b>									
Compensation of employees	14 754	15 486	16 019	16 993	18 582	19 229	19 720	20 427	20 097

	1992-93	1993-94	1994-95	1995-96	1996-97	1997-98	1998-99	1999-00	2000-01
	\$m	\$m	\$m	\$m	\$m	\$m	\$m	\$m	\$m
<b>Education</b>									
Compensation of employees	17 754	18 623	18 898	19 220	20 828	22 067	23 112	23 689	25 551
Gross operating surplus and gross mixed income	268	313	353	894	599	574	519	538	658
<i>Total</i>	18 022	18 937	19 251	20 114	21 427	22 641	23 631	24 227	26 209
<b>Health and community services</b>									
Compensation of employees	19 837	20 457	21 256	23 058	24 921	25 413	27 232	27 920	30 487
Gross operating surplus and gross mixed income	3 345	3 623	3 882	4 220	3 828	3 988	4 259	4 421	4 874
<i>Total</i>	23 182	24 081	25 138	27 278	28 749	29 401	31 491	32 341	35 361
<b>Cultural and recreational services</b>									
Compensation of employees	3 091	3 254	3 754	4 514	4 809	4 908	5 096	5 395	5 576
Gross operating surplus and gross mixed income	3 087	3 380	3 369	3 442	3 363	4 304	4 265	4 823	5 234
<i>Total</i>	6 178	6 634	7 123	7 956	8 172	9 212	9 361	10 218	10 810
<b>Personal and other services</b>									
Compensation of employees	7 129	7 305	7 767	8 155	8 601	8 546	9 367	10 413	10 442
Gross operating surplus and gross mixed income	1 327	1 163	1 537	2 209	2 458	2 797	2 721	3 048	3 008
<i>Total</i>	8 456	8 468	9 304	10 364	11 059	11 343	12 088	13 461	13 450
<b>Ownership of dwellings</b>									
Gross operating surplus	35 787	37 225	38 913	41 188	44 796	48 400	51 106	54 660	57 238
<b>General government</b>									
Gross operating surplus(a)	9 435	9 817	10 187	10 637	10 835	11 216	11 739	12 228	13 072
<b>All industries</b>									
Compensation of employees	203 276	211 802	224 450	241 100	257 968	268 912	287 086	302 312	322 638
Gross operating surplus and gross mixed income	177 512	185 849	192 149	202 687	210 158	227 762	234 776	253 803	264 641
<b>Total</b>	<b>380 788</b>	<b>397 651</b>	<b>416 599</b>	<b>443 787</b>	<b>468 126</b>	<b>496 674</b>	<b>521 862</b>	<b>556 115</b>	<b>587 279</b>

(a) This item represents the gross operating surplus of all general government

operations in all industries for this State. Data are not available to provide State by industry details of general government gross operating surplus.

# GROSS HOUSEHOLD INCOME AND GROSS HOUSEHOLD DISPOSABLE INCOME, Values and per Head of Mean Population—Current Prices

1992-93 1993-94 1994-95 1995-96 1996-97 1997-98 1998-99 1999-00 2000-01

## GROSS HOUSEHOLD INCOME

New South Wales (\$m)	133 956	138 712	147 841	159 157	168 623	174 884	185 602	197 234	212 261
Victoria (\$m)	98 544	100 846	106 567	113 672	117 470	123 115	131 233	139 920	150 407
Queensland (\$m)	60 238	62 417	67 995	72 580	77 954	80 438	86 611	90 725	97 996
South Australia (\$m)	28 885	30 117	31 396	33 903	34 538	35 778	36 493	37 934	40 290
Western Australia (\$m)	34 608	36 877	40 161	43 373	45 099	47 264	50 326	54 323	57 569
Tasmania (\$m)	8 685	8 755	9 322	9 832	10 069	10 189	10 614	10 809	11 413
Northern Territory (\$m)	3 263	3 548	4 020	4 335	4 664	4 805	5 299	5 544	5 991
Australian Capital Territory (\$m)	8 597	9 167	9 801	10 225	10 202	10 494	11 276	11 721	12 591
<b>Australia (\$m)</b>	<b>376 776</b>	<b>390 438</b>	<b>417 103</b>	<b>447 077</b>	<b>468 619</b>	<b>486 966</b>	<b>517 453</b>	<b>548 209</b>	<b>588 518</b>

## GROSS HOUSEHOLD INCOME PER HEAD OF MEAN POPULATION

New South Wales (\$)	22 376	22 985	24 263	25 807	27 015	27 744	29 149	30 674	32 658
Victoria (\$)	22 067	22 511	23 670	25 041	25 622	26 589	28 024	29 534	31 347
Queensland (\$)	19 618	19 816	21 083	21 971	23 136	23 479	24 886	25 657	27 243
South Australia (\$)	19 803	20 574	21 390	23 040	23 385	24 124	24 499	25 362	26 859
Western Australia (\$)	20 743	21 819	23 372	24 787	25 298	26 066	27 283	29 023	30 335
Tasmania (\$)	18 443	18 532	19 689	20 738	21 232	21 557	22 518	22 963	24 278
Northern Territory (\$)	19 248	20 596	22 934	24 086	25 283	25 500	27 692	28 566	30 509
Australian Capital Territory (\$)	28 939	30 546	32 327	33 373	33 064	34 114	36 553	37 793	40 316
<b>Australia (\$)</b>	<b>21 423</b>	<b>21 976</b>	<b>23 222</b>	<b>24 572</b>	<b>25 441</b>	<b>26 146</b>	<b>27 472</b>	<b>28 784</b>	<b>30 538</b>

## GROSS HOUSEHOLD DISPOSABLE INCOME

New South Wales (\$m)	104 497	108 693	114 287	121 721	128 442	133 214	140 984	149 098	163 446
Victoria (\$m)	76 897	79 140	82 882	87 511	90 818	94 902	101 340	107 586	117 652
Queensland (\$m)	47 485	48 733	52 521	55 120	60 234	61 706	66 594	69 310	76 211
South Australia (\$m)	22 679	23 825	24 588	26 231	26 845	27 640	28 019	28 925	31 320
Western Australia (\$m)	26 857	28 559	31 023	32 980	34 368	35 736	38 033	40 848	44 039
Tasmania (\$m)	6 816	6 838	7 245	7 502	7 748	7 821	8 157	8 274	8 907
Northern Territory (\$m)	2 611	2 850	3 253	3 475	3 718	3 799	4 221	4 402	4 839
Australian Capital Territory (\$m)	6 767	7 206	7 696	7 872	7 826	8 018	8 640	8 942	9 808
<b>Australia (\$m)</b>	<b>294 907</b>	<b>306 243</b>	<b>323 860</b>	<b>342 784</b>	<b>360 338</b>	<b>373 175</b>	<b>396 365</b>	<b>417 824</b>	<b>456 688</b>

## GROSS HOUSEHOLD DISPOSABLE INCOME PER HEAD OF MEAN POPULATION

New South Wales (\$)	17 455	18 011	18 756	19 737	20 577	21 133	22 142	23 188	25 147
Victoria (\$)	17 220	17 666	18 410	19 278	19 809	20 496	21 640	22 709	24 520
Queensland (\$)	15 465	15 471	16 285	16 685	17 877	18 011	19 134	19 601	21 186
South Australia (\$)	15 548	16 276	16 752	17 826	18 176	18 637	18 810	19 339	20 879
Western Australia (\$)	16 097	16 897	18 054	18 848	19 279	19 708	20 619	21 823	23 205
Tasmania (\$)	14 474	14 474	15 303	15 824	16 338	16 547	17 305	17 578	18 947
Northern Territory (\$)	15 402	16 544	18 558	19 308	20 155	20 161	22 059	22 681	24 642
Australian Capital Territory (\$)	22 779	24 011	25 384	25 693	25 364	26 065	28 008	28 833	31 405
<b>Australia (\$)</b>	<b>16 768</b>	<b>17 237</b>	<b>18 031</b>	<b>18 840</b>	<b>19 562</b>	<b>20 037</b>	<b>21 043</b>	<b>21 938</b>	<b>23 698</b>

	1992-93	1993-94	1994-95	1995-96	1996-97	1997-98	1998-99	1999-00	2000-01
	\$m	\$m	\$m	\$m	\$m	\$m	\$m	\$m	\$m
<b>Income</b>									
Primary income receivable									
Gross operating surplus—dwellings									
owned by persons	14 557	15 148	15 850	17 137	18 627	20 339	21 847	23 522	24 898
Gross mixed income	13 752	13 497	13 705	14 127	14 750	14 864	15 622	17 118	17 236
Compensation of employees	72 310	75 426	79 744	86 515	92 841	96 875	103 286	108 897	116 343
Property income receivable(a)	14 984	14 228	16 762	17 449	16 876	17 089	18 314	20 175	21 646
<i>Total primary income receivable</i>	<i>115 603</i>	<i>118 299</i>	<i>126 061</i>	<i>135 228</i>	<i>143 094</i>	<i>149 167</i>	<i>159 069</i>	<i>169 712</i>	<i>180 123</i>
Secondary income receivable									
Social benefits receivable									
Workers' compensation	1 022	1 553	1 691	2 154	2 487	2 240	1 997	2 170	2 312
Social assistance benefits	12 493	13 446	13 800	14 915	15 760	16 029	17 126	17 469	20 905
Current transfers to non-profit institutions	1 848	2 101	2 433	2 726	2 880	2 986	2 840	3 099	3 788
Other secondary income	2 990	3 313	3 856	4 134	4 401	4 462	4 569	4 784	5 133
<i>Total secondary income receivable</i>	<i>18 353</i>	<i>20 413</i>	<i>21 780</i>	<i>23 929</i>	<i>25 529</i>	<i>25 718</i>	<i>26 533</i>	<i>27 522</i>	<i>32 138</i>
<b>Total gross income</b>	<b>133 956</b>	<b>138 712</b>	<b>147 841</b>	<b>159 157</b>	<b>168 623</b>	<b>174 884</b>	<b>185 602</b>	<b>197 234</b>	<b>212 261</b>
<b>Uses of income</b>									
Primary income payable									
Property income									
Dwellings and unincorporated enterprises	6 299	5 201	6 346	7 047	7 477	7 075	7 486	8 700	10 420
Consumer debt interest	864	864	1 122	1 351	1 026	1 040	1 167	1 384	1 460
<i>Total property income payable</i>	<i>7 163</i>	<i>6 065</i>	<i>7 468</i>	<i>8 397</i>	<i>8 503</i>	<i>8 116</i>	<i>8 654</i>	<i>10 085</i>	<i>11 881</i>
<i>Total primary income payable</i>	<i>7 163</i>	<i>6 065</i>	<i>7 468</i>	<i>8 397</i>	<i>8 503</i>	<i>8 116</i>	<i>8 654</i>	<i>10 085</i>	<i>11 881</i>
Secondary income payable									
Income tax payable	17 152	18 311	19 919	22 231	24 459	26 072	28 074	30 008	28 518
Social contributions for workers' compensation	1 155	1 402	1 685	2 045	2 172	2 222	2 240	2 239	2 322
Other current taxes on income, wealth, etc	520	567	604	606	655	706	805	787	786
Other secondary income	3 468	3 674	3 878	4 157	4 393	4 554	4 845	5 017	5 309
<i>Total secondary income payable</i>	<i>22 295</i>	<i>23 954</i>	<i>26 086</i>	<i>29 039</i>	<i>31 679</i>	<i>33 554</i>	<i>35 964</i>	<i>38 051</i>	<i>36 935</i>
<b>Total income payable</b>	<b>29 459</b>	<b>30 019</b>	<b>33 554</b>	<b>37 436</b>	<b>40 181</b>	<b>41 671</b>	<b>44 617</b>	<b>48 135</b>	<b>48 815</b>
<b>Gross disposable income</b>	<b>104 497</b>	<b>108 693</b>	<b>114 287</b>	<b>121 721</b>	<b>128 442</b>	<b>133 214</b>	<b>140 984</b>	<b>149 098</b>	<b>163 446</b>
Final consumption expenditure	91 974	94 599	100 690	108 214	113 656	120 735	128 933	136 697	146 855
Net saving plus consumption of fixed capital(b)	12 523	14 094	13 597	13 507	14 786	12 479	12 051	12 401	16 591
<b>Total use of gross income</b>	<b>133 956</b>	<b>138 712</b>	<b>147 841</b>	<b>159 157</b>	<b>168 623</b>	<b>174 884</b>	<b>185 602</b>	<b>197 234</b>	<b>212 261</b>

(a) Includes investment income of insurance enterprises and superannuation funds attributable to policyholders and imputed interest on government unfunded superannuation arrangements.

(b) Net saving plus consumption of fixed capital is derived as a balancing item.



	1992-93	1993-94	1994-95	1995-96	1996-97	1997-98	1998-99	1999-00	2000-01
	\$m	\$m	\$m	\$m	\$m	\$m	\$m	\$m	\$m
<b>Income</b>									
Primary income receivable									
Gross operating surplus—dwellings owned by persons	8 392	8 493	8 750	9 131	10 040	11 001	11 569	12 387	12 906
Gross mixed income	11 139	11 194	11 417	12 708	12 134	13 142	13 753	14 902	15 154
Compensation of employees	53 649	55 098	57 828	61 757	65 543	68 295	73 691	78 133	83 806
Property income receivable(a)	11 461	10 790	12 759	13 247	12 126	12 473	13 880	15 314	16 415
<i>Total primary income receivable</i>	<i>84 641</i>	<i>85 575</i>	<i>90 754</i>	<i>96 843</i>	<i>99 843</i>	<i>104 911</i>	<i>112 893</i>	<i>120 736</i>	<i>128 281</i>
Secondary income receivable									
Social benefits receivable									
Workers' compensation	1 029	1 346	1 185	1 255	1 229	1 110	998	1 093	1 167
Social assistance benefits	9 400	10 166	10 341	10 852	11 427	11 488	12 302	12 613	15 048
Current transfers to non-profit institutions	1 296	1 382	1 521	1 774	1 833	2 413	1 780	2 067	2 242
Other secondary income	2 178	2 377	2 767	2 947	3 139	3 193	3 260	3 412	3 669
<i>Total secondary income receivable</i>	<i>13 903</i>	<i>15 271</i>	<i>15 813</i>	<i>16 828</i>	<i>17 628</i>	<i>18 203</i>	<i>18 340</i>	<i>19 184</i>	<i>22 126</i>
<b>Total gross income</b>	<b>98 544</b>	<b>100 846</b>	<b>106 567</b>	<b>113 672</b>	<b>117 470</b>	<b>123 115</b>	<b>131 233</b>	<b>139 920</b>	<b>150 407</b>
<b>Uses of income</b>									
Primary income payable									
Property income									
Dwellings and unincorporated enterprises	4 832	4 236	4 944	5 348	4 664	5 136	5 250	5 985	7 000
Consumer debt interest	586	581	746	912	730	763	870	1 054	1 107
<i>Total property income payable</i>	<i>5 418</i>	<i>4 817</i>	<i>5 690</i>	<i>6 260</i>	<i>5 395</i>	<i>5 899</i>	<i>6 120</i>	<i>7 039</i>	<i>8 107</i>
<i>Total primary income payable</i>	<i>5 418</i>	<i>4 817</i>	<i>5 690</i>	<i>6 260</i>	<i>5 395</i>	<i>5 899</i>	<i>6 120</i>	<i>7 039</i>	<i>8 107</i>
Secondary income payable									
Income tax payable	12 219	12 658	13 626	15 325	16 628	17 514	18 749	20 152	19 231
Social contributions for workers' compensation	1 163	1 215	1 181	1 191	1 073	1 101	1 119	1 127	1 172
Other current taxes on income, wealth, etc	305	362	387	394	412	446	466	475	492
Other secondary income	2 541	2 653	2 802	2 991	3 145	3 252	3 439	3 542	3 753
<i>Total secondary income payable</i>	<i>16 228</i>	<i>16 888</i>	<i>17 996</i>	<i>19 901</i>	<i>21 258</i>	<i>22 313</i>	<i>23 773</i>	<i>25 296</i>	<i>24 648</i>
<b>Total income payable</b>	<b>21 647</b>	<b>21 706</b>	<b>23 685</b>	<b>26 161</b>	<b>26 653</b>	<b>28 212</b>	<b>29 892</b>	<b>32 335</b>	<b>32 755</b>
<b>Gross disposable income</b>	<b>76 897</b>	<b>79 140</b>	<b>82 882</b>	<b>87 511</b>	<b>90 818</b>	<b>94 902</b>	<b>101 340</b>	<b>107 586</b>	<b>117 652</b>
Final consumption expenditure	64 837	66 790	70 840	74 748	78 725	84 457	89 250	94 748	101 205
Net saving plus consumption of fixed capital(b)	12 060	12 350	12 042	12 763	12 093	10 445	12 090	12 838	16 447
<b>Total use of gross income</b>	<b>98 544</b>	<b>100 846</b>	<b>106 567</b>	<b>113 672</b>	<b>117 470</b>	<b>123 115</b>	<b>131 233</b>	<b>139 920</b>	<b>150 407</b>

(a) Includes investment income of insurance enterprises and superannuation funds attributable to policyholders and imputed interest on government unfunded superannuation arrangements.

(b) Net saving plus consumption of fixed capital is derived as a balancing item.

	1992-93	1993-94	1994-95	1995-96	1996-97	1997-98	1998-99	1999-00	2000-01
	\$m	\$m	\$m	\$m	\$m	\$m	\$m	\$m	\$m
<b>Income</b>									
Primary income receivable									
Gross operating surplus—dwellings									
owned by persons	5 366	5 745	6 101	6 432	6 899	7 315	7 613	8 010	8 238
Gross mixed income	8 581	8 670	9 023	8 681	8 729	9 108	10 371	10 879	11 093
Compensation of employees	31 928	32 887	36 055	38 968	42 686	44 256	47 314	49 152	52 958
Property income receivable(a)	5 213	4 772	5 647	6 108	6 427	6 455	7 084	7 716	8 306
<i>Total primary income receivable</i>	<i>51 088</i>	<i>52 074</i>	<i>56 826</i>	<i>60 189</i>	<i>64 741</i>	<i>67 134</i>	<i>72 382</i>	<i>75 757</i>	<i>80 595</i>
Secondary income receivable									
Social benefits receivable									
Workers' compensation	302	500	566	750	877	798	714	770	821
Social assistance benefits	6 355	7 049	7 326	7 986	8 411	8 446	8 961	9 138	11 104
Current transfers to non-profit institutions	1 019	1 134	1 306	1 519	1 605	1 661	2 094	2 480	2 690
Other secondary income	1 474	1 660	1 971	2 136	2 319	2 399	2 460	2 580	2 785
<i>Total secondary income receivable</i>	<i>9 150</i>	<i>10 343</i>	<i>11 169</i>	<i>12 391</i>	<i>13 213</i>	<i>13 304</i>	<i>14 229</i>	<i>14 968</i>	<i>17 401</i>
<b>Total gross income</b>	<b>60 238</b>	<b>62 417</b>	<b>67 995</b>	<b>72 580</b>	<b>77 954</b>	<b>80 438</b>	<b>86 611</b>	<b>90 725</b>	<b>97 996</b>
<b>Uses of income</b>									
Primary income payable									
Property income									
Dwellings and unincorporated enterprises	2 558	2 625	3 189	3 699	2 962	3 186	3 338	3 833	4 464
Consumer debt interest	451	467	630	776	652	657	723	866	916
<i>Total property income payable</i>	<i>3 009</i>	<i>3 091</i>	<i>3 819</i>	<i>4 475</i>	<i>3 615</i>	<i>3 843</i>	<i>4 061</i>	<i>4 699</i>	<i>5 379</i>
<i>Total primary income payable</i>	<i>3 009</i>	<i>3 091</i>	<i>3 819</i>	<i>4 475</i>	<i>3 615</i>	<i>3 843</i>	<i>4 061</i>	<i>4 699</i>	<i>5 379</i>
Secondary income payable									
Income tax payable	7 359	7 934	8 736	9 722	10 618	11 278	12 197	12 862	12 330
Social contributions for workers' compensation	341	451	564	712	766	792	801	794	825
Other current taxes on income, wealth, etc	275	299	305	319	347	361	367	371	391
Other secondary income	1 769	1 908	2 049	2 231	2 375	2 458	2 591	2 688	2 859
<i>Total secondary income payable</i>	<i>9 744</i>	<i>10 592</i>	<i>11 654</i>	<i>12 984</i>	<i>14 106</i>	<i>14 889</i>	<i>15 956</i>	<i>16 715</i>	<i>16 405</i>
<b>Total income payable</b>	<b>12 753</b>	<b>13 684</b>	<b>15 473</b>	<b>17 460</b>	<b>17 720</b>	<b>18 732</b>	<b>20 017</b>	<b>21 415</b>	<b>21 785</b>
<b>Gross disposable income</b>	<b>47 485</b>	<b>48 733</b>	<b>52 521</b>	<b>55 120</b>	<b>60 234</b>	<b>61 706</b>	<b>66 594</b>	<b>69 310</b>	<b>76 211</b>
Final consumption expenditure	42 636	45 242	48 546	51 480	53 571	57 108	60 871	63 965	69 503
Net saving plus consumption of fixed capital(b)	4 849	3 491	3 975	3 640	6 663	4 598	5 723	5 345	6 708
<b>Total use of gross income</b>	<b>60 238</b>	<b>62 417</b>	<b>67 995</b>	<b>72 580</b>	<b>77 954</b>	<b>80 438</b>	<b>86 611</b>	<b>90 725</b>	<b>97 996</b>

(a) Includes investment income of insurance enterprises and superannuation funds attributable to policyholders and imputed interest on government unfunded superannuation arrangements.

(b) Net saving plus consumption of fixed capital is derived as a balancing item.

	1992-93	1993-94	1994-95	1995-96	1996-97	1997-98	1998-99	1999-00	2000-01
	\$m	\$m	\$m	\$m	\$m	\$m	\$m	\$m	\$m
<b>Income</b>									
Primary income receivable									
Gross operating surplus—dwellings									
owned by persons	2 556	2 639	2 680	2 732	2 961	3 150	3 360	3 489	3 608
Gross mixed income	3 535	3 557	3 694	4 527	4 193	4 504	4 096	4 034	4 057
Compensation of employees	15 217	16 099	16 291	17 206	17 922	18 632	19 099	19 947	20 888
Property income receivable(a)	2 843	2 646	3 192	3 501	3 163	3 164	3 485	3 823	4 084
<i>Total primary income receivable</i>	<i>24 151</i>	<i>24 941</i>	<i>25 857</i>	<i>27 966</i>	<i>28 239</i>	<i>29 450</i>	<i>30 040</i>	<i>31 293</i>	<i>32 637</i>
Secondary income receivable									
Social benefits receivable									
Workers' compensation	314	419	428	521	573	524	451	486	510
Social assistance benefits	3 283	3 479	3 637	3 823	4 034	4 053	4 263	4 341	5 195
Current transfers to non-profit institutions	454	525	600	669	708	754	728	772	838
Other secondary income	683	754	873	924	984	997	1 011	1 042	1 110
<i>Total secondary income receivable</i>	<i>4 734</i>	<i>5 176</i>	<i>5 539</i>	<i>5 937</i>	<i>6 300</i>	<i>6 328</i>	<i>6 453</i>	<i>6 641</i>	<i>7 653</i>
<b>Total gross income</b>	<b>28 885</b>	<b>30 117</b>	<b>31 396</b>	<b>33 903</b>	<b>34 538</b>	<b>35 778</b>	<b>36 493</b>	<b>37 934</b>	<b>40 290</b>
<b>Uses of income</b>									
Primary income payable									
Property income									
Dwellings and unincorporated enterprises	1 202	1 028	1 202	1 415	1 252	1 369	1 392	1 586	1 846
Consumer debt interest	194	201	258	314	210	206	225	255	293
<i>Total property income payable</i>	<i>1 397</i>	<i>1 229</i>	<i>1 460</i>	<i>1 729</i>	<i>1 462</i>	<i>1 575</i>	<i>1 616</i>	<i>1 841</i>	<i>2 139</i>
<i>Total primary income payable</i>	<i>1 397</i>	<i>1 229</i>	<i>1 460</i>	<i>1 729</i>	<i>1 462</i>	<i>1 575</i>	<i>1 616</i>	<i>1 841</i>	<i>2 139</i>
Secondary income payable									
Income tax payable	3 529	3 717	3 901	4 369	4 603	4 882	5 128	5 406	5 014
Social contributions for workers' compensation	355	378	427	494	501	520	506	501	512
Other current taxes on income, wealth, etc	110	118	124	125	129	140	147	165	155
Other secondary income	815	850	897	955	998	1 021	1 077	1 095	1 149
<i>Total secondary income payable</i>	<i>4 809</i>	<i>5 063</i>	<i>5 349</i>	<i>5 943</i>	<i>6 231</i>	<i>6 563</i>	<i>6 858</i>	<i>7 167</i>	<i>6 830</i>
<b>Total income payable</b>	<b>6 206</b>	<b>6 292</b>	<b>6 808</b>	<b>7 673</b>	<b>7 694</b>	<b>8 138</b>	<b>8 474</b>	<b>9 009</b>	<b>8 970</b>
<b>Gross disposable income</b>	<b>22 679</b>	<b>23 825</b>	<b>24 588</b>	<b>26 231</b>	<b>26 845</b>	<b>27 640</b>	<b>28 019</b>	<b>28 925</b>	<b>31 320</b>
Final consumption expenditure	19 269	20 119	21 426	22 660	23 114	24 433	25 427	26 549	28 782
Net saving plus consumption of fixed capital(b)	3 410	3 706	3 162	3 571	3 731	3 207	2 592	2 376	2 538
<b>Total use of gross income</b>	<b>28 885</b>	<b>30 117</b>	<b>31 396</b>	<b>33 903</b>	<b>34 538</b>	<b>35 778</b>	<b>36 493</b>	<b>37 934</b>	<b>40 290</b>

(a) Includes investment income of insurance enterprises and superannuation funds attributable to policyholders and imputed interest on government unfunded superannuation arrangements.

(b) Net saving plus consumption of fixed capital is derived as a balancing item.

	1992-93	1993-94	1994-95	1995-96	1996-97	1997-98	1998-99	1999-00	2000-01
	\$m	\$m	\$m	\$m	\$m	\$m	\$m	\$m	\$m
<b>Income</b>									
Primary income receivable									
Gross operating surplus—dwellings									
owned by persons	2 615	2 769	2 969	3 147	3 409	3 673	3 907	4 252	4 471
Gross mixed income	5 316	5 527	6 211	7 006	6 677	7 325	7 529	8 396	8 354
Compensation of employees	18 525	20 139	21 447	22 740	24 267	25 410	27 200	29 304	30 761
Property income receivable(a)	3 164	2 947	3 551	3 889	3 760	3 782	4 226	4 685	5 026
<i>Total primary income receivable</i>	29 620	31 382	34 178	36 782	38 113	40 190	42 862	46 637	48 612
Secondary income receivable									
Social benefits receivable									
Workers' compensation	234	383	387	468	513	463	414	461	482
Social assistance benefits	3 318	3 522	3 668	3 977	4 157	4 200	4 565	4 617	5 659
Current transfers to non-profit institutions	614	672	845	986	1 060	1 120	1 156	1 214	1 317
Other secondary income	823	918	1 083	1 160	1 256	1 290	1 329	1 394	1 498
<i>Total secondary income receivable</i>	4 988	5 495	5 984	6 592	6 986	7 074	7 464	7 686	8 957
<b>Total gross income</b>	<b>34 608</b>	<b>36 877</b>	<b>40 161</b>	<b>43 373</b>	<b>45 099</b>	<b>47 264</b>	<b>50 326</b>	<b>54 323</b>	<b>57 569</b>
<b>Uses of income</b>									
Primary income payable									
Property income									
Dwellings and unincorporated enterprises	1 620	1 508	1 774	2 056	1 862	2 039	2 245	2 602	3 073
Consumer debt interest	242	253	324	396	374	393	429	507	511
<i>Total property income payable</i>	1 862	1 761	2 098	2 452	2 236	2 432	2 675	3 108	3 584
<i>Total primary income payable</i>	1 862	1 761	2 098	2 452	2 236	2 432	2 675	3 108	3 584
Secondary income payable									
Income tax payable	4 524	5 032	5 398	6 149	6 630	7 144	7 539	8 239	7 680
Social contributions for workers' compensation	264	346	386	444	448	460	464	475	484
Other current taxes on income, wealth, etc	122	136	138	140	151	172	224	213	256
Other secondary income	979	1 044	1 119	1 207	1 266	1 321	1 391	1 439	1 526
<i>Total secondary income payable</i>	5 889	6 558	7 041	7 940	8 495	9 097	9 618	10 366	9 946
<b>Total income payable</b>	<b>7 752</b>	<b>8 318</b>	<b>9 139</b>	<b>10 393</b>	<b>10 731</b>	<b>11 528</b>	<b>12 293</b>	<b>13 475</b>	<b>13 530</b>
<b>Gross disposable income</b>	<b>26 857</b>	<b>28 559</b>	<b>31 023</b>	<b>32 980</b>	<b>34 368</b>	<b>35 736</b>	<b>38 033</b>	<b>40 848</b>	<b>44 039</b>
Final consumption expenditure	23 583	25 233	26 820	28 649	29 737	31 622	33 086	34 421	36 629
Net saving plus consumption of fixed capital(b)	3 274	3 326	4 203	4 331	4 631	4 114	4 947	6 427	7 410
<b>Total use of gross income</b>	<b>34 608</b>	<b>36 877</b>	<b>40 161</b>	<b>43 373</b>	<b>45 099</b>	<b>47 264</b>	<b>50 326</b>	<b>54 323</b>	<b>57 569</b>

(a) Includes investment income of insurance enterprises and superannuation funds attributable to policyholders and imputed interest on government unfunded superannuation arrangements.

(b) Net saving plus consumption of fixed capital is derived as a balancing item.

	1992-93	1993-94	1994-95	1995-96	1996-97	1997-98	1998-99	1999-00	2000-01
	\$m	\$m	\$m	\$m	\$m	\$m	\$m	\$m	\$m
<b>Income</b>									
Primary income receivable									
Gross operating surplus—dwellings owned by persons	661	696	726	762	834	878	884	903	910
Gross mixed income	1 104	1 138	1 142	1 113	1 133	1 127	1 225	1 270	1 292
Compensation of employees	4 472	4 432	4 724	5 008	5 161	5 283	5 477	5 465	5 649
Property income receivable(a)	934	814	939	986	892	867	940	1 026	1 090
<i>Total primary income receivable</i>	<i>7 171</i>	<i>7 080</i>	<i>7 531</i>	<i>7 869</i>	<i>8 020</i>	<i>8 155</i>	<i>8 526</i>	<i>8 664</i>	<i>8 941</i>
Secondary income receivable									
Social benefits receivable									
Workers' compensation	70	119	128	155	175	161	136	140	145
Social assistance benefits	1 077	1 157	1 196	1 310	1 361	1 361	1 441	1 465	1 748
Current transfers to non-profit institutions	155	162	191	207	203	202	198	219	237
Other secondary income	213	237	275	291	310	310	312	321	342
<i>Total secondary income receivable</i>	<i>1 514</i>	<i>1 675</i>	<i>1 791</i>	<i>1 963</i>	<i>2 049</i>	<i>2 034</i>	<i>2 088</i>	<i>2 145</i>	<i>2 472</i>
<b>Total gross income</b>	<b>8 685</b>	<b>8 755</b>	<b>9 322</b>	<b>9 832</b>	<b>10 069</b>	<b>10 189</b>	<b>10 614</b>	<b>10 809</b>	<b>11 413</b>
<b>Uses of income</b>									
Primary income payable									
Property income									
Dwellings and unincorporated enterprises	361	318	366	448	366	380	390	437	501
Consumer debt interest	53	53	75	96	72	69	79	87	91
<i>Total property income payable</i>	<i>414</i>	<i>371</i>	<i>441</i>	<i>544</i>	<i>438</i>	<i>449</i>	<i>468</i>	<i>524</i>	<i>591</i>
<i>Total primary income payable</i>	<i>414</i>	<i>371</i>	<i>441</i>	<i>544</i>	<i>438</i>	<i>449</i>	<i>468</i>	<i>524</i>	<i>591</i>
Secondary income payable									
Income tax payable	1 086	1 133	1 180	1 291	1 365	1 385	1 449	1 474	1 360
Social contributions for workers' compensation	79	108	128	147	153	160	153	144	146
Other current taxes on income, wealth, etc	33	36	41	45	47	49	49	51	52
Other secondary income	256	269	287	304	318	325	338	341	357
<i>Total secondary income payable</i>	<i>1 454</i>	<i>1 546</i>	<i>1 636</i>	<i>1 787</i>	<i>1 883</i>	<i>1 919</i>	<i>1 989</i>	<i>2 010</i>	<i>1 915</i>
<b>Total income payable</b>	<b>1 869</b>	<b>1 917</b>	<b>2 077</b>	<b>2 331</b>	<b>2 321</b>	<b>2 368</b>	<b>2 457</b>	<b>2 535</b>	<b>2 506</b>
<b>Gross disposable income</b>	<b>6 816</b>	<b>6 838</b>	<b>7 245</b>	<b>7 502</b>	<b>7 748</b>	<b>7 821</b>	<b>8 157</b>	<b>8 274</b>	<b>8 907</b>
Final consumption expenditure	6 059	6 392	6 611	6 932	7 183	7 548	7 726	8 005	8 471
Net saving plus consumption of fixed capital(b)	757	446	634	570	565	273	431	269	436
<b>Total use of gross income</b>	<b>8 685</b>	<b>8 755</b>	<b>9 322</b>	<b>9 832</b>	<b>10 069</b>	<b>10 189</b>	<b>10 614</b>	<b>10 809</b>	<b>11 413</b>

(a) Includes investment income of insurance enterprises and superannuation funds attributable to policyholders and imputed interest on government unfunded superannuation arrangements.

(b) Net saving plus consumption of fixed capital is derived as a balancing item.

	1992-93	1993-94	1994-95	1995-96	1996-97	1997-98	1998-99	1999-00	2000-01
	\$m	\$m	\$m	\$m	\$m	\$m	\$m	\$m	\$m
<b>Income</b>									
Primary income receivable									
Gross operating surplus—dwellings									
owned by persons	234	248	262	285	332	346	366	393	400
Gross mixed income	336	389	429	435	442	390	473	518	557
Compensation of employees	2 047	2 210	2 520	2 718	2 982	3 151	3 503	3 602	3 879
Property income receivable(a)	192	190	247	272	266	257	298	332	360
<i>Total primary income receivable</i>	2 809	3 037	3 458	3 710	4 022	4 144	4 640	4 845	5 196
Secondary income receivable									
Social benefits receivable									
Workers' compensation	25	40	35	40	40	39	32	33	37
Social assistance benefits	238	259	285	304	313	317	337	344	411
Current transfers to non-profit institutions	111	124	137	167	166	178	159	185	201
Other secondary income	80	88	105	114	123	127	131	137	147
<i>Total secondary income receivable</i>	454	511	562	625	642	661	659	699	795
<b>Total gross income</b>	<b>3 263</b>	<b>3 548</b>	<b>4 020</b>	<b>4 335</b>	<b>4 664</b>	<b>4 805</b>	<b>5 299</b>	<b>5 544</b>	<b>5 991</b>
<b>Uses of income</b>									
Primary income payable									
Property income									
Dwellings and unincorporated enterprises	75	78	97	128	106	123	136	160	184
Consumer debt interest	14	16	22	26	28	26	29	33	36
<i>Total property income payable</i>	89	94	119	155	134	149	165	193	220
<i>Total primary income payable</i>	89	94	119	155	134	149	165	193	220
Secondary income payable									
Income tax payable	429	455	492	535	637	672	721	754	727
Social contributions for workers' compensation	28	36	35	38	35	38	36	34	37
Other current taxes on income, wealth, etc	10	11	11	12	11	12	15	16	16
Other secondary income	95	102	110	120	128	134	140	144	153
<i>Total secondary income payable</i>	562	604	648	705	811	856	912	948	933
<b>Total income payable</b>	<b>652</b>	<b>698</b>	<b>768</b>	<b>860</b>	<b>946</b>	<b>1 006</b>	<b>1 078</b>	<b>1 142</b>	<b>1 152</b>
<b>Gross disposable income</b>	<b>2 611</b>	<b>2 850</b>	<b>3 253</b>	<b>3 475</b>	<b>3 718</b>	<b>3 799</b>	<b>4 221</b>	<b>4 402</b>	<b>4 839</b>
Final consumption expenditure	2 277	2 318	2 517	2 758	2 739	2 972	3 124	3 317	3 488
Net saving plus consumption of fixed capital(b)	334	532	736	717	979	827	1 097	1 085	1 351
<b>Total use of gross income</b>	<b>3 263</b>	<b>3 548</b>	<b>4 020</b>	<b>4 335</b>	<b>4 664</b>	<b>4 805</b>	<b>5 299</b>	<b>5 544</b>	<b>5 991</b>

(a) Includes investment income of insurance enterprises and superannuation funds attributable to policyholders and imputed interest on government unfunded superannuation arrangements.

(b) Net saving plus consumption of fixed capital is derived as a balancing item.

	1992-93	1993-94	1994-95	1995-96	1996-97	1997-98	1998-99	1999-00	2000-01
	\$m	\$m	\$m	\$m	\$m	\$m	\$m	\$m	\$m
<b>Income</b>									
Primary income receivable									
Gross operating surplus—dwellings									
owned by persons	765	792	805	799	831	850	860	924	1 002
Gross mixed income	546	493	517	467	443	469	521	549	549
Compensation of employees	5 314	5 739	6 003	6 340	6 705	6 965	7 459	7 675	8 190
Property income receivable(a)	1 148	1 213	1 463	1 489	1 030	1 022	1 162	1 308	1 408
<i>Total primary income receivable</i>	7 773	8 237	8 788	9 095	9 009	9 306	10 002	10 456	11 149
Secondary income receivable									
Social benefits receivable									
Workers' compensation	66	100	102	120	134	123	109	116	125
Social assistance benefits	463	509	542	609	621	629	668	681	814
Current transfers to non-profit institutions	154	164	186	207	230	229	286	249	270
Other secondary income	141	156	183	194	207	207	210	219	233
<i>Total secondary income receivable</i>	824	930	1 013	1 130	1 193	1 188	1 274	1 265	1 442
<b>Total gross income</b>	<b>8 597</b>	<b>9 167</b>	<b>9 801</b>	<b>10 225</b>	<b>10 202</b>	<b>10 494</b>	<b>11 276</b>	<b>11 721</b>	<b>12 591</b>
<b>Uses of income</b>									
Primary income payable									
Property income									
Dwellings and unincorporated enterprises	281	281	331	396	337	364	371	421	493
Consumer debt interest	47	50	67	80	63	65	72	86	87
<i>Total property income payable</i>	328	331	398	476	401	429	443	507	580
<i>Total primary income payable</i>	328	331	398	476	401	429	443	507	580
Secondary income payable									
Income tax payable	1 229	1 330	1 382	1 528	1 610	1 668	1 800	1 875	1 789
Social contributions for workers' compensation	75	90	102	114	117	122	122	120	126
Other current taxes on income, wealth, etc	28	30	32	32	34	35	39	40	40
Other secondary income	171	179	191	202	214	222	232	237	249
<i>Total secondary income payable</i>	1 503	1 629	1 707	1 876	1 975	2 047	2 193	2 272	2 204
<b>Total income payable</b>	<b>1 830</b>	<b>1 960</b>	<b>2 105</b>	<b>2 353</b>	<b>2 376</b>	<b>2 476</b>	<b>2 636</b>	<b>2 779</b>	<b>2 784</b>
<b>Gross disposable income</b>	<b>6 767</b>	<b>7 206</b>	<b>7 696</b>	<b>7 872</b>	<b>7 826</b>	<b>8 018</b>	<b>8 640</b>	<b>8 942</b>	<b>9 808</b>
Final consumption expenditure	4 912	5 204	5 420	5 628	5 840	6 226	6 534	7 010	7 752
Net saving plus consumption of fixed capital(b)	1 855	2 002	2 276	2 244	1 986	1 792	2 106	1 932	2 056
<b>Total use of gross income</b>	<b>8 597</b>	<b>9 167</b>	<b>9 801</b>	<b>10 225</b>	<b>10 202</b>	<b>10 494</b>	<b>11 276</b>	<b>11 721</b>	<b>12 591</b>

(a) Includes investment income of insurance enterprises and superannuation funds attributable to policyholders and imputed interest on government unfunded superannuation arrangements.

(b) Net saving plus consumption of fixed capital is derived as a balancing item.

	1992-93	1993-94	1994-95	1995-96	1996-97	1997-98	1998-99	1999-00	2000-01
	\$m	\$m	\$m	\$m	\$m	\$m	\$m	\$m	\$m
<b>Income</b>									
Primary income receivable									
Gross operating surplus—dwellings									
owned by persons	35 146	36 530	38 143	40 425	43 933	47 552	50 406	53 880	56 433
Gross mixed income	44 308	44 465	46 138	49 064	48 500	50 929	53 590	57 666	58 292
Compensation of employees	203 462	212 030	224 612	241 252	258 107	268 867	287 029	302 175	322 474
Property income receivable(a)	39 939	37 600	44 560	46 941	44 540	45 109	49 389	54 379	58 335
<i>Total primary income receivable</i>	<i>322 855</i>	<i>330 625</i>	<i>353 453</i>	<i>377 682</i>	<i>395 080</i>	<i>412 457</i>	<i>440 414</i>	<i>468 100</i>	<i>495 534</i>
Secondary income receivable									
Social benefits receivable									
Workers' compensation	3 062	4 460	4 522	5 463	6 029	5 458	4 851	5 268	5 600
Social assistance benefits	36 627	39 587	40 795	43 776	46 084	46 523	49 663	50 668	60 884
Current transfers to non-profit institutions	5 651	6 264	7 219	8 255	8 685	9 543	9 241	10 285	11 583
Other secondary income	8 581	9 502	11 114	11 901	12 741	12 985	13 284	13 888	14 917
<i>Total secondary income receivable</i>	<i>53 921</i>	<i>59 813</i>	<i>63 650</i>	<i>69 395</i>	<i>73 539</i>	<i>74 509</i>	<i>77 039</i>	<i>80 109</i>	<i>92 984</i>
<b>Total gross income</b>	<b>376 776</b>	<b>390 438</b>	<b>417 103</b>	<b>447 077</b>	<b>468 619</b>	<b>486 966</b>	<b>517 453</b>	<b>548 209</b>	<b>588 518</b>
<b>Uses of income</b>									
Primary income payable									
Property income									
Dwellings and unincorporated enterprises	17 229	15 275	18 249	20 537	19 028	19 672	20 608	23 723	27 980
Consumer debt interest	2 451	2 484	3 244	3 952	3 156	3 220	3 594	4 274	4 501
<i>Total property income payable</i>	<i>19 680</i>	<i>17 759</i>	<i>21 493</i>	<i>24 489</i>	<i>22 184</i>	<i>22 892</i>	<i>24 202</i>	<i>27 997</i>	<i>32 481</i>
<i>Total primary income payable</i>	<i>19 680</i>	<i>17 759</i>	<i>21 493</i>	<i>24 489</i>	<i>22 184</i>	<i>22 892</i>	<i>24 202</i>	<i>27 997</i>	<i>32 481</i>
Secondary income payable									
Income tax payable	47 527	50 570	54 634	61 150	66 550	70 615	75 658	80 770	76 649
Social contributions for workers' compensation	3 462	4 025	4 507	5 186	5 264	5 414	5 441	5 435	5 624
Other current taxes on income, wealth, etc	1 403	1 559	1 642	1 673	1 786	1 921	2 112	2 118	2 188
Other secondary income	9 797	10 282	10 967	11 795	12 497	12 949	13 675	14 065	14 888
<i>Total secondary income payable</i>	<i>62 189</i>	<i>66 436</i>	<i>71 750</i>	<i>79 804</i>	<i>86 097</i>	<i>90 899</i>	<i>96 886</i>	<i>102 388</i>	<i>99 349</i>
<b>Total income payable</b>	<b>81 869</b>	<b>84 195</b>	<b>93 243</b>	<b>104 293</b>	<b>108 281</b>	<b>113 791</b>	<b>121 088</b>	<b>130 385</b>	<b>131 830</b>
<b>Gross disposable income</b>	<b>294 907</b>	<b>306 243</b>	<b>323 860</b>	<b>342 784</b>	<b>360 338</b>	<b>373 175</b>	<b>396 365</b>	<b>417 824</b>	<b>456 688</b>
Final consumption expenditure	255 547	265 897	282 870	301 069	314 565	335 101	354 951	374 712	402 685
Net saving plus consumption of fixed capital(b)	39 360	40 346	40 990	41 715	45 773	38 074	41 414	43 112	54 003
<b>Total use of gross income</b>	<b>376 776</b>	<b>390 438</b>	<b>417 103</b>	<b>447 077</b>	<b>468 619</b>	<b>486 966</b>	<b>517 453</b>	<b>548 209</b>	<b>588 518</b>

(a) Includes investment income of insurance enterprises and superannuation funds attributable to policyholders and imputed interest on government unfunded superannuation arrangements.

(b) Net saving plus consumption of fixed capital is derived as a balancing item.



	1992-93	1993-94	1994-95	1995-96	1996-97	1997-98	1998-99	1999-00	2000-01
	\$m	\$m	\$m	\$m	\$m	\$m	\$m	\$m	\$m
NEW SOUTH WALES (a)									
Gross value of agricultural production	6 612	7 205	6 867	7 765	8 922	8 201	8 313	9 175	9 628
Subsidies not included in GVP	124	149	154	219	227	230	236	244	258
less Production valuation adjustment	-83	-5	45	-97	-132	-193	4	149	145
less Production costs other than wages and consumption of fixed capital	3 590	3 975	4 132	4 501	4 955	5 096	4 938	4 837	5 166
<i>Total agricultural factor income</i>	<i>3 229</i>	<i>3 384</i>	<i>2 844</i>	<i>3 580</i>	<i>4 326</i>	<i>3 528</i>	<i>3 607</i>	<i>4 424</i>	<i>4 575</i>
Taxes less subsidies on production and imports	265	268	261	167	179	197	180	188	177
<i>Gross agricultural product at market prices</i>	<i>3 494</i>	<i>3 652</i>	<i>3 105</i>	<i>3 747</i>	<i>4 505</i>	<i>3 725</i>	<i>3 787</i>	<i>4 612</i>	<i>4 752</i>
less Compensation of employees, consumption of fixed capital, net property income payable	2 742	2 815	3 075	2 722	2 641	2 856	2 886	2 968	3 151
less Taxes less subsidies on production and imports	265	268	261	167	179	197	180	188	177
<b>Agricultural income</b>	<b>487</b>	<b>569</b>	<b>-231</b>	<b>858</b>	<b>1 685</b>	<b>672</b>	<b>720</b>	<b>1 455</b>	<b>1 424</b>
VICTORIA									
Gross value of agricultural production	5 881	6 263	5 836	6 929	6 734	6 728	7 015	7 723	8 226
Subsidies not included in GVP	83	92	99	109	111	112	112	126	132
less Production valuation adjustment	-45	—	34	-47	-35	-48	-22	35	70
less Production costs other than wages and consumption of fixed capital	2 596	2 666	2 834	3 038	3 068	3 156	3 247	3 311	3 516
<i>Total agricultural factor income</i>	<i>3 413</i>	<i>3 689</i>	<i>3 067</i>	<i>4 047</i>	<i>3 812</i>	<i>3 732</i>	<i>3 901</i>	<i>4 497</i>	<i>4 773</i>
Taxes less subsidies on production and imports	196	207	197	182	176	194	177	185	174
<i>Gross agricultural product at market prices</i>	<i>3 609</i>	<i>3 896</i>	<i>3 264</i>	<i>4 229</i>	<i>3 988</i>	<i>3 926</i>	<i>4 078</i>	<i>4 683</i>	<i>4 947</i>
less Compensation of employees, consumption of fixed capital, net property income payable	1 971	1 946	2 030	1 925	1 985	2 108	2 177	2 244	2 415
less Taxes less subsidies on production and imports	196	207	197	182	176	194	177	185	174
<b>Agricultural income</b>	<b>1 442</b>	<b>1 743</b>	<b>1 037</b>	<b>2 122</b>	<b>1 826</b>	<b>1 625</b>	<b>1 725</b>	<b>2 253</b>	<b>2 358</b>
QUEENSLAND									
Gross value of agricultural production	5 200	5 701	6 056	5 822	6 068	6 202	7 011	7 195	7 657
Subsidies not included in GVP	95	114	139	134	166	171	174	185	195
less Production valuation adjustment	-17	1	11	-16	-34	-43	-14	18	29
less Production costs other than wages and consumption of fixed capital	2 486	2 706	3 037	2 958	3 429	3 522	3 432	3 471	3 693
<i>Total agricultural factor income</i>	<i>2 826</i>	<i>3 108</i>	<i>3 147</i>	<i>3 014</i>	<i>2 839</i>	<i>2 894</i>	<i>3 766</i>	<i>3 884</i>	<i>4 130</i>
Taxes less subsidies on production and imports	48	29	-12	35	15	17	15	16	15
<i>Gross agricultural product at market prices</i>	<i>2 874</i>	<i>3 137</i>	<i>3 135</i>	<i>3 049</i>	<i>2 854</i>	<i>2 910</i>	<i>3 781</i>	<i>3 900</i>	<i>4 145</i>
less Compensation of employees, consumption of fixed capital, net property income payable	2 164	2 299	2 487	2 259	2 326	2 455	2 545	2 621	2 815
less Taxes less subsidies on production and imports	48	29	-12	35	15	17	15	16	15
<b>Agricultural income</b>	<b>662</b>	<b>809</b>	<b>660</b>	<b>755</b>	<b>513</b>	<b>438</b>	<b>1 222</b>	<b>1 263</b>	<b>1 315</b>

— nil or rounded to zero (including null cells)

(a) Includes Australian Capital Territory.

	1992-93	1993-94	1994-95	1995-96	1996-97	1997-98	1998-99	1999-00	2000-01
	\$m	\$m	\$m	\$m	\$m	\$m	\$m	\$m	\$m
SOUTH AUSTRALIA									
Gross value of agricultural production	2 451	2 511	2 734	3 444	3 212	3 391	3 471	3 326	3 565
Subsidies not included in GVP	54	57	67	71	72	74	75	78	83
less Production valuation adjustment	-51	-4	42	-52	-48	-73	-85	-43	86
less Production costs other than wages and consumption of fixed capital	1 356	1 301	1 526	1 679	1 669	1 716	1 879	1 890	1 975
<i>Total agricultural factor income</i>	<i>1 200</i>	<i>1 271</i>	<i>1 233</i>	<i>1 888</i>	<i>1 663</i>	<i>1 822</i>	<i>1 752</i>	<i>1 554</i>	<i>1 587</i>
Taxes less subsidies on production and imports	27	21	6	32	11	12	11	12	11
<i>Gross agricultural product at market prices</i>	<i>1 227</i>	<i>1 292</i>	<i>1 239</i>	<i>1 920</i>	<i>1 674</i>	<i>1 834</i>	<i>1 763</i>	<i>1 566</i>	<i>1 597</i>
less Compensation of employees, consumption of fixed capital, net property income payable	783	705	800	905	925	914	1 014	1 057	1 183
less Taxes less subsidies on production and imports	27	21	6	32	11	12	11	12	11
<b>Agricultural income</b>	<b>417</b>	<b>566</b>	<b>433</b>	<b>983</b>	<b>738</b>	<b>908</b>	<b>738</b>	<b>497</b>	<b>403</b>
WESTERN AUSTRALIA									
Gross value of agricultural production	3 457	3 705	4 296	4 783	4 555	4 544	4 477	5 126	5 310
Subsidies not included in GVP	86	98	127	108	131	143	140	149	157
less Production valuation adjustment	-124	-17	149	-125	-130	-242	-51	73	120
less Production costs other than wages and consumption of fixed capital	1 929	2 019	2 238	2 465	2 618	2 691	2 996	2 985	3 163
<i>Total agricultural factor income</i>	<i>1 738</i>	<i>1 801</i>	<i>2 036</i>	<i>2 552</i>	<i>2 198</i>	<i>2 238</i>	<i>1 671</i>	<i>2 211</i>	<i>2 183</i>
Taxes less subsidies on production and imports	42	58	40	59	20	22	20	21	20
<i>Gross agricultural product at market prices</i>	<i>1 780</i>	<i>1 859</i>	<i>2 076</i>	<i>2 611</i>	<i>2 218</i>	<i>2 260</i>	<i>1 691</i>	<i>2 232</i>	<i>2 203</i>
less Compensation of employees, consumption of fixed capital, net property income payable	1 206	1 199	1 316	1 207	1 273	1 362	1 404	1 448	1 559
less Taxes less subsidies on production and imports	42	58	40	59	20	22	20	21	20
<b>Agricultural income</b>	<b>532</b>	<b>602</b>	<b>720</b>	<b>1 345</b>	<b>925</b>	<b>876</b>	<b>267</b>	<b>764</b>	<b>624</b>
TASMANIA									
Gross value of agricultural production	601	659	643	649	752	761	801	808	853
Subsidies not included in GVP	10	10	11	12	14	15	15	16	17
less Production valuation adjustment	-1	1	2	-3	1	-1	-3	4	1
less Production costs other than wages and consumption of fixed capital	272	290	307	322	355	364	332	332	354
<i>Total agricultural factor income</i>	<i>340</i>	<i>378</i>	<i>345</i>	<i>342</i>	<i>410</i>	<i>412</i>	<i>488</i>	<i>487</i>	<i>515</i>
Taxes less subsidies on production and imports	13	14	15	13	11	12	11	12	11
<i>Gross agricultural product at market prices</i>	<i>353</i>	<i>392</i>	<i>360</i>	<i>355</i>	<i>421</i>	<i>424</i>	<i>499</i>	<i>499</i>	<i>525</i>
less Compensation of employees, consumption of fixed capital, net property income payable	306	277	282	272	296	310	323	331	355
less Taxes less subsidies on production and imports	13	14	15	13	11	12	11	12	11
<b>Agricultural income</b>	<b>34</b>	<b>102</b>	<b>63</b>	<b>70</b>	<b>114</b>	<b>102</b>	<b>165</b>	<b>156</b>	<b>160</b>

— nil or rounded to zero (including null cells)

	1992-93	1993-94	1994-95	1995-96	1996-97	1997-98	1998-99	1999-00	2000-01
	\$m	\$m	\$m	\$m	\$m	\$m	\$m	\$m	\$m
NORTHERN TERRITORY									
Gross value of agricultural production	196	287	290	291	292	217	276	311	358
Subsidies not included in GVP	3	7	5	5	5	5	5	5	5
less Production valuation adjustment	—	—	—	—	—	—	—	—	—
less Production costs other than wages and consumption of fixed capital	52	96	84	85	89	92	102	108	115
<i>Total agricultural factor income</i>	<i>147</i>	<i>198</i>	<i>211</i>	<i>211</i>	<i>208</i>	<i>130</i>	<i>179</i>	<i>208</i>	<i>249</i>
Taxes less subsidies on production and imports	3	-3	1	1	1	1	1	1	1
<i>Gross agricultural product at market prices</i>	<i>150</i>	<i>195</i>	<i>212</i>	<i>212</i>	<i>209</i>	<i>131</i>	<i>181</i>	<i>209</i>	<i>250</i>
less Compensation of employees, consumption of fixed capital, net property income payable	54	55	54	55	62	64	67	70	74
less Taxes less subsidies on production and imports	3	-3	1	1	1	1	1	1	1
<b>Agricultural income</b>	<b>93</b>	<b>143</b>	<b>157</b>	<b>156</b>	<b>146</b>	<b>66</b>	<b>112</b>	<b>138</b>	<b>175</b>
AUSTRALIA									
Gross value of agricultural production	24 398	26 331	26 722	29 683	30 534	30 043	31 633	33 665	35 596
Subsidies not included in GVP	455	527	602	658	726	750	758	770	847
less Production valuation adjustment	-321	-24	283	-340	-378	-599	-170	236	451
less Production costs other than wages and consumption of fixed capital	12 282	13 053	14 158	15 047	16 183	16 636	16 927	16 934	17 981
<i>Total agricultural factor income</i>	<i>12 892</i>	<i>13 829</i>	<i>12 883</i>	<i>15 634</i>	<i>15 455</i>	<i>14 756</i>	<i>15 634</i>	<i>17 265</i>	<i>18 011</i>
Taxes less subsidies on production and imports	594	594	508	489	413	455	415	435	408
<i>Gross agricultural product at market prices</i>	<i>13 486</i>	<i>14 423</i>	<i>13 391</i>	<i>16 123</i>	<i>15 868</i>	<i>15 211</i>	<i>16 049</i>	<i>17 700</i>	<i>18 419</i>
less Compensation of employees, consumption of fixed capital, net property income payable	9 225	9 296	10 044	9 345	9 509	10 069	10 415	10 739	11 552
less Taxes less subsidies on production and imports	594	594	508	489	413	455	415	435	408
<b>Agricultural income</b>	<b>3 667</b>	<b>4 533</b>	<b>2 839</b>	<b>6 289</b>	<b>5 946</b>	<b>4 687</b>	<b>5 219</b>	<b>6 526</b>	<b>6 459</b>

— nil or rounded to zero (including null cells)

## EXPLANATORY NOTES

### INTRODUCTION

**1** This publication contains State and Territory estimates of gross domestic product (referred to as gross state product (GSP)) and its components, in current price and chain volume terms, for the years 1992–93 to 2000–2001. Where ‘State’, is referred to in the text, it also encompasses the two Territories. The estimates in this publication are consistent with those published for Australia in the 2000–2001 issue of *Australian System of National Accounts* (Cat. no. 5204.0). For further details of the concepts, sources and methods used in compiling the estimates in this publication refer to *Australian System of National Accounts: Concepts, Sources and Methods* (Cat. no. 5216.0). A revised edition was released in December 2000 and is accessible on the ABS website [www.abs.gov.au](http://www.abs.gov.au). (starting at the home page select: Statistics—Statistical Concepts Library—ABS concepts, sources, methods and statistical frameworks—5216.0). A paper edition of the manual is also available.

**2** State estimates are essentially a dissection of the Australian estimates contained in 5204.0. While it is possible in some cases to build up estimates using the same data sources as those used for the Australian estimates, quite often it is necessary to derive dissections using a variety of allocators. These may be directly related to the aggregate being allocated (for example, economic survey data) or only indirectly related (for example, population and household income distributions).

**3** Quarterly State estimates of State Final Demand and its components are released quarterly in the publication *Australian National Accounts: National Income, Expenditure and Product* (Cat. no. 5206.0). The data are available for chain volume measures and in current prices and are presented in trend, seasonally adjusted and original forms.

### CONCEPTUAL BASIS

**4** Australia’s national accounts statistics are based on the latest international standard for national accounting—the *System of National Accounts, 1993* (SNA93). SNA93 was produced by five international organisations involved in the use of economic statistics and the promotion of international statistical standards—United Nations, Organisation for Economic Co-operation and Development, International Monetary Fund, World Bank and Commission of the European Communities.

**5** While national estimates are based on the concepts and conventions embodied in SNA93, no such detailed standard is available for sub-national (regional/State) accounts. In the main, the national concepts are applicable to State accounts, but there remain a number of conceptual and measurement issues that either do not apply or are insignificant at the national level. Most problems arise for the Transport and storage, Communication services, and Finance and insurance industries, and in the treatment of central government. In such cases, conventions need to be established which reflect data availability and/or the needs of users.

### CONCEPTS, DEFINITIONS, SOURCES AND METHODS

**6** Extensive revisions to *Australian System of National Accounts: Concepts, Sources and Methods* (Cat. no. 5216.0) were required to reflect the implementation of SNA93 in the Australian national accounts and other changes to sources and methods which have occurred over recent years. 5216.0 outlines major concepts and definitions, describes sources of data and methods used to derive annual and quarterly estimates for major aggregates at current prices and in chain volume terms, and discusses the accuracy and reliability of the national accounts. In addition, it includes documentation on input-output tables, financial accounts, capital stock, productivity measures, balance sheets, and state accounts. For detailed information about the nature and extent of the conceptual

## EXPLANATORY NOTES *continued*

### CONCEPTS, DEFINITIONS, SOURCES AND METHODS *continued*

changes introduced with the implementation of SNA93 reference should be made to the following information papers: *Implementation of Revised International Standards in the Australian National Accounts* (Cat. no. 5251.0), *Introduction of Chain Volume Measures in the Australian National Accounts* (Cat. no. 5248.0), and *Upgraded Australian National Accounts, 1998* (Cat. no. 5253.0).

### ESTIMATES OF GSP AND ITS COMPONENTS

**7** Estimates of GSP in current prices are produced by summing factor incomes, i.e. compensation of employees, gross operating surplus (GOS) and gross mixed income (GMI), plus taxes less subsidies on production and imports. While wages and salaries can be readily collected by State, this is not always the case for other components of compensation of employees or for GOS plus GMI, which often cannot be measured satisfactorily within business accounting systems at the individual location. Most of the ABS economic collections which provide data for the estimates in this publication have used the 'management unit' as their basic collection unit. A management unit is the largest unit within an enterprise group (a group of legal entities under common ownership and control) which controls its productive activities and for which accounts are kept. The operations of some management units cut across State borders, and conventions have to be adopted in order to allocate GOS plus GMI to States.

**8** For the Transport and storage and Communication services industries, estimates of GOS plus GMI by State can be substantially affected by the conceptual basis adopted for allocation. For example, in the case of the modal transport industries (i.e. all transport industries except Services to transport), possible ways of attributing production could include tonne (or person) kilometres traveled in a State; economic activity attributed to the base of operations only; or a mixture of both. As State economic activity for interstate modal transport activities cannot be uniquely defined, it may even be preferable that they should be regarded as extra-territorial and excluded entirely from State production. However, the approach adopted in this publication is to use activity indicators to allocate interstate transport services to States.

**9** Numerous data sources are used to apportion Australia level GOS plus GMI to States. Where available, economic survey data are used to apportion GOS for corporations. For those industries for which economic survey data are not available, a variety of allocators is used to extrapolate or estimate State dissections of GOS. Indicators include State details of wages and salaries, employment, household final consumption expenditure, movements in unincorporated enterprises' GMI, freight shipped from Australian ports, and airport passenger embarkations/disembarkations (the latter two indicators are specific to the transport industry). Taxation statistics are used to apportion GMI for non-agricultural unincorporated enterprises in some industries, and economic survey data are used for other industries. Production-based estimates of agricultural GOS plus GMI are derived using the same data sources and methodology as are used for the Australian estimates. Although the GOS of State and local government non-financial corporations is directly available from the ABS public finance system, GOS for Commonwealth Government non-financial corporations is allocated mainly using indirect indicators.

**10** While State by industry estimates of wages and salaries are obtained from the same data sources as those used for the Australian estimates, the estimates of the other components of compensation of employees are essentially allocations of the Australian total. State by industry estimates of employers' superannuation contributions are derived using wages and salaries by State by industry as an allocator. State by industry estimates of workers compensation premiums are

## EXPLANATORY NOTES *continued*

### ESTIMATES OF GSP AND ITS COMPONENTS *continued*

based on labour costs data collected by the ABS. It should be noted that there is a minor difference between compensation of employees as published in the total factor income tables and as published in the household income accounts for both the Australian and State estimates. The difference arises in situations where a household supplies labour to a production establishment that is in a different domestic territory (State/county) from the household.

**11** Estimates of taxes less subsidies on production and imports are derived by adding values for taxes received and subsidies paid by State and local governments and the Commonwealth Government. Data are available from the ABS public finance system, although Commonwealth Government values are not generally available by State. Indicators are used to allocate sales tax, excise tax, customs duties and major subsidies to the State where the economic activity took place.

### STATE EXPENDITURE ESTIMATES

**12** In addition to estimates of GSP and their income components, this publication contains State estimates for a number of expenditure components and international exports and imports of goods and services in both current prices and chain volume terms. The difference between the sum of these components and GSP is known as the balancing item. The balancing item reflects: changes in inventories; interstate trade in goods and services; and the expenditure statistical discrepancy.

### *Current price estimates*

**13** State estimates of household final consumption expenditure and private gross fixed capital formation are derived largely from the same sources used for the Australia-level estimates. In the case of household final consumption expenditure, data sources for major components such as household goods, dwelling rent, purchase of motor vehicles, fares, and purchases of gas, electricity and fuel are available by State. Some components of expenditure on recreation and culture rely on the extrapolation and interpolation of less frequent Household Expenditure Survey data. Where actual data are not available, indirect indicators such as household disposable income are used to allocate the Australia-level estimate.

**14** State estimates of private gross fixed capital formation in dwellings and other buildings and structures are derived using data from the ABS Building Activity Survey and the Engineering Construction Survey, while expenditure on equipment is derived from the Survey of Private New Fixed Capital Expenditure. Ownership transfer costs are derived from stamp duty data supplied by the various States, ABS surveys of real estate agents and lawyers, and various other data such as the number of real estate property transfers by State. Essentially, these are the same data sources used to prepare the Australia-level estimates.

**15** State estimates of gross fixed capital formation in livestock are based on data from the ABS Agricultural Census, the Survey of Livestock Slaughtering and Australian Bureau of Agricultural and Resource Economics surveys. State estimates of exploration expenditure are derived from the ABS Survey of Actual and Expected Private Mineral Exploration. State estimates of capital expenditure on software and artistic originals are based on a variety of allocators, including some indirect ones.

**16** Final expenditures of State and local governments can be readily allocated by State, and the same public finance source that is used to derive Australian estimates is also used to derive State estimates.

## EXPLANATORY NOTES *continued*

Current price estimates  
*continued*

**17** The treatment of national government final expenditures in regional accounting is rather problematic. National government includes the Commonwealth Government and the universities, with the major allocation difficulties arising from the Commonwealth Government component. Alternative treatments are to attribute final expenditures to the region in which the expenditure was incurred, or to the region in which the beneficiaries reside, or even to consider the Commonwealth Government as a consumer unit is extraterritorial and therefore to exclude it from all regions. For practical reasons the first approach has been adopted in this publication, although it still requires extensive use of indirect indicators. An implication is that a large proportion of the consumption of Commonwealth Government services is included in State final demand (SFD) for the Australian Capital Territory, increasing the balancing item for that Territory. If data had been available to allocate Commonwealth final consumption expenditure to end users, the balancing item for the Australian Capital Territory would be a much smaller negative (or even a positive value) because the provision of much of the services produced would be regarded as an interstate export instead. Estimates for Commonwealth Government expenditures in the States on both an annual and quarterly basis therefore have to be treated with considerable caution.

**18** The non-defence component of Commonwealth Government final consumption expenditure is apportioned to States using data on gross earnings from the ABS Survey of Employment and Earnings. Defence salaries and recurrent expenditure are allocated using defence employment by State, while defence weapons and their delivery platforms are allocated according to population.

**19** For Commonwealth general government gross fixed capital formation, Australia-level estimates are first subdivided into expenditure on other buildings and structures, and expenditure on machinery and equipment. The Australia-level other buildings and structures component is generally allocated to the States based on Commonwealth Government construction expenditures by State as an indicator. Expenditure on machinery and equipment is allocated using Commonwealth general government employment by State. State estimates of capital expenditure on intangible assets are based on a variety of allocators, including some indirect indicators.

**20** For Commonwealth public corporation gross fixed capital formation, a variety of allocators is applied at the individual corporation level. Direct allocation is possible in a few cases where corporations operate wholly in one State. For some corporations State-level direct indicators are available from either the ABS Engineering Construction Survey or from published accounts. For other corporations, indirect allocations are used—for example, purchases of ships are allocated using general freight activity through ports in each State.

**21** State estimates of international exports and imports of goods are on a recorded trade basis. No timing adjustments have been made to convert the data to a balance of payments basis and therefore the data differ slightly from the export and import estimates contained in 5204.0. Exports of goods data are on a State of origin basis, that is the State in which the final stage of manufacture or production occurs. For most exports this should correspond to the required basis for State allocation, that is, the State of final resident ownership. The estimates differ from those published in *International Merchandise Trade, Australia* (Cat no. 5422.0) because re-exports, which are not published on a State basis in 5422.0, are allocated to the States by commodity and included in the State figures in this publication. Those commodities subject to a confidentiality

## EXPLANATORY NOTES *continued*

### *Current price estimates continued*

restriction, which are not available by State in 5422.0 are allocated to the States by commodity in proportion to each State's total exports and re-exports and included in the State export figures in this publication.

**22** State estimates of international imports of goods are on the basis of the State in which the imports were released from Australian Customs Service control. In most cases this corresponds to the State of initial resident ownership, which is the required basis of State allocation. No information is available on which to base an adjustment for goods released from Customs' control in a State other than that in which their owner resides.

**23** International trade in services data are consistent with balance of payments estimates of exports and imports of services. State allocation has been made primarily on the basis of a series of indicators for transportation, travel and communication services. For other services (about 25% of all trade in services) allocation is based on the location of the business reporting the information, which serves as a proxy of State of origin/consumption of that service.

### *Chain volume estimates*

**24** Chain volume estimates of government and household final consumption expenditure for Australia are derived by aggregating the volume estimates for the States using a bottom-up approach. The State volume estimates are derived using State-specific price indexes. Much use is made of components of the capital city consumer price indexes and State wage cost indexes.

**25** Chain volume estimates of private gross fixed capital formation for Australia are derived by aggregating the volume estimates for the States using a bottom-up approach. State-specific price indexes are used to derive the volume estimates for capital formation in dwelling and non-dwelling construction. National price indexes are used to derive the volume estimates for capital formation in machinery and equipment and intangibles, although account is taken of the different industry compositions within each State—industry patterns of capital formation by asset type vary.

**26** Quarterly chain volume estimates of public gross fixed capital formation for Australia are derived by aggregating the volume estimates for the States using a bottom-up approach. State-specific price indexes are used for gross fixed capital formation in non-dwelling construction, but national price indexes are used to derive the volume estimates for the remainder. Annual chain volume estimates of public gross fixed capital formation by State are derived by aggregating the quarterly estimates and then constraining these estimates to be consistent with the national estimates.

**27** Detailed estimates of current price exports of goods on a recorded trade basis at the two-digit level of the *Standard International Trade Classification Revision 3* (SITC Rev 3) are revalued, generally using national rather than State-specific deflators, to produce volume estimates of these components. There is an assumption that the national deflators will usually provide a reasonable measure of change in price at the State level. Revaluation at the two-digit (division) level of SITC Rev 3 is a compromise giving a reasonable level of disaggregation by commodity type without increasing the magnitude of the revaluation exercise too significantly. In a very limited number of cases more specific deflators are used to replace the national deflator at the SITC Rev 3 division level. This occurs in those cases where the composition of a particular division is known to be variable between States and the division includes commodities with price movements which deviate significantly from the division average. Mineral and agricultural commodities are the most significant in this regard. The State estimates are benchmarked to the national estimates.



## EXPLANATORY NOTES *continued*

Chain volume estimates  
*continued*

**28** A similar approach is adopted for imports of goods, with national deflators being used. The level of revaluation corresponds broadly to the commodity subgroup level of the balance of payments merchandise imports end-use classification of imports, i.e. two-digit Broad Economic Classification (BEC) by three-digit level of the SITC Rev 3. The State estimates are benchmarked to the national estimates.

**29** Chain volume estimates of exports and imports of international trade inservices have been calculated using the same methodology and deflators as applied at the Australian level. About 10 categories of imports and exports of services are identified and calculation of chain volumes is carried out at this level.

CHAIN VOLUME MEASURES  
OF GSP

**30** The chain volume measures of GSP presented in this publication are derived by revaluing current price, income-based estimates of GSP, using deflators which are compiled using the available data on the composition of expenditures on State production and movements in associated prices. For a more complete description of why this approach has been adopted, and details of the data sources and the methods used, see Chapter 28, *Australian System of National Accounts: Concepts, Sources and Methods* (Cat. no. 5216.0).

**31** A lack of data means that it is not possible to derive estimates at the State level equivalent to the aggregate Australian expenditure-based estimates of gross domestic product. While the components of State final demand (SFD) and estimates of international merchandise trade and international trade in services by State are available, there are no complete data on interstate trade in goods and services; or changes in inventories by State. Hence, an expenditure-based GSP volume measure cannot be derived by a similar methodology to that adopted at the Australian level.

**32** In order to make maximum use of the incomplete expenditure data and limited price data available at the State level, an approach is adopted which essentially involves deriving the best possible current price and chain volume estimates of expenditure that encompass as much as possible of GSP. For each State, current price estimates of identified components of international and interstate trade and changes in inventories are combined with the current price estimates of SFD and, similarly, the chain volume measures of those components are combined with the chain volume measures of SFD. The quotient derived by dividing the aggregate chain volume measure into the aggregate current price estimates is a Paasche (current-weighted) price index. It is this price index which is used to revalue the current price estimates of GSP.

**33** It is crucial to identify separately those components for which the deflators deviate significantly from the average, since the method adopted effectively attributes the weighted average deflator to the unidentified components. There is an assumption underlying the approach adopted in deriving the aggregate State deflators that, because of price competition, the available national price indicators are reasonably indicative at the State level. This is a less distorting assumption if the price indicators are weighted together at a reasonable level of commodity disaggregation, and implies deriving the current price and chain volume estimates at as fine a level as possible.

**34** Despite the fact that as broad a range of information as possible is used in this estimation procedure, the aggregate current price and chain volume estimates of expenditures used in the derivation of the State deflator are not considered to be complete measures. They merely serve to produce the best deflators and therefore the most reliable chain volume measures of GSP that the

## EXPLANATORY NOTES *continued*

### CHAIN VOLUME MEASURES OF GSP *continued*

available data and resources allow. For this reason, they are regarded as experimental estimates.

### ACCURACY OF ESTIMATES

**35** The estimates in this publication represent allocations of Australian estimates published in 5204.0. Therefore, they will reflect any inaccuracies in those estimates as well as inaccuracies introduced by any particular conceptual, methodological and data problems inherent in the allocation of Australian estimates to States. The degree of accuracy and reliability will necessarily be lower than that for the Australian estimates.

**36** Uniform methodologies and consistent data sources have been used for all States. Although there is no reason to expect that there would be any bias in the methods used, there is some variation in both the quality of data between States (particularly where sample surveys are used) and the sensitivity of estimates to alternative concepts.

**37** Detailed industry estimates for the two Territories are likely to be less accurate than those for the States. For example, for the Communication services industry, data for the Australian Capital Territory are available only in combination with New South Wales; a similar problem exists for Communication services data relating to the Northern Territory, which are combined with data for South Australia. The use of indirect allocators to separate the Territories has a far more significant effect on the relative errors for the Australian Capital Territory and for the Northern Territory than for New South Wales and South Australia. Where sample surveys are used to collect data, standard errors are often higher for the Territories than for the States.

**38** The limitations of ABS sample surveys in producing State estimates are particularly relevant for estimates of private gross fixed capital formation—machinery and equipment. Estimates for each State are derived largely from a quarterly national survey of business. The survey design aims to achieve a high degree of statistical accuracy in the samples in the larger States. However, as the accuracy of the estimates from this survey (in percentage terms) is roughly proportional to the size of the sample, the estimates for the smaller States are generally less accurate than those for the larger States. Hence, the estimates for the Northern Territory, Australian Capital Territory, Tasmania and South Australia are particularly prone to volatile movements.

**39** Estimates of GOS plus GMI for the latest year rely on a range of broad activity indicators such as retail turnover, construction work done and persons employed. Therefore, they are subject to revision as more suitable sources, such as taxation statistics and ABS economic survey data, become available.

**40** Estimates of taxes less subsidies on production and imports, government final consumption expenditure, and general government and public corporation gross fixed capital formation can be substantially affected by the indicators chosen to apportion the Commonwealth Government component to States. Again, care is required when interpreting these estimates.

**41** The incomplete nature of the price and expenditure data available at the State level for the derivation of the GSP deflators, and the generally lower level of accuracy of State data, referred to earlier, mean that there is greater scope for inaccuracy than in comparable estimates at the Australian level. The chain volume measures of GSP are derived measures, calculated by adjusting the current price estimates using specially constructed State deflators. This means that the chain volume measures incorporate the combined effects of the inaccuracies in the current price estimates and those in the deflators. These inaccuracies reflect a number of factors, including higher relative sampling errors;

## EXPLANATORY NOTES *continued*

### ACCURACY OF ESTIMATES

*continued*

the 'fuzziness' of some State data arising from difficulties that businesses and government agencies operating across the country have in allocating their activities by State; and the limited availability of source data on a State basis in a number of areas. The inaccuracies in the component value and price estimates may be compounded or offset in the process of deriving the chain volume measures.

**42** In analysing the chain volume measures it is important to recognise the data limitations at the State level and to be aware that the accuracy of the estimates will not be as high as that of the corresponding national estimates.

### OCCASIONAL PAPERS

**43** Occasional papers produced by the officers of the ABS report on various aspects of research being undertaken on national accounts. They are not used for the release of official statistics and do not necessarily reflect the views of the ABS. The following occasional papers are available at all ABS offices:

*Studies in National Accounting: Current Cost Depreciation and Net Capital Stock*—C. Bailey (1981/1)

*The Accuracy and Reliability of the Quarterly Australian National Accounts*—A. Johnson (1982/2)

*State Accounts, Australia: Issues and Experimental Estimates*—S. Burrell, J. Daniel, A. Johnson and R. Walters (1984/4)

*The Effects of Rebasings the Constant Price Estimates of the Australian National Accounts*—R. Dippelsman (1985/3)

*Estimates of Depreciation and Capital Stock, Australia*—R. Walters, and R. Dippelsman (1985/3)

*Estimates of Multifactor Productivity, Australia*—C. Aspden (Cat. no. 5233.0)

*Productivity, Prices, Profits and Pay, 1964–65 to 1989–90*—I. Castles (Cat. no. 5239.0)

*Unpaid Work and the Australian Economy, 1997* (Cat. no. 5240.0)

*National Balance Sheets for Australia: Issues and Experimental Estimates, 1989–1992* (Cat. no. 5241.0)

### INFORMATION PAPERS

**44** Information papers are published by the ABS to provide information on topical issues and developments. The following information papers relating to national accounting issues are available at all ABS offices:

*Measuring Unpaid Household Work—Issues and Experimental Estimates* (Cat. no. 5236.0)

*Introduction of Revised International Statistical Standards in ABS Macro-economic Statistics* (Cat. no. 5245.0)

*Implementation of Revised International Standards in the Australian National Accounts* (Cat. no. 5251.0)

*Introduction of Chain Volume Measures in the Australian National Accounts* (Cat. no. 5248.0)

*Upgraded Australian National Accounts* (Cat. no. 5253.0)

### RELATED PUBLICATIONS

**45** As well as the publications previously referred to, other national accounts publications produced which may be of interest are:

*Australian National Accounts: Input-Output Tables* (Cat. no. 5209.0)

*Australian National Accounts: Tourism Satellite Account* (Cat. no. 5249.0)

**46** Current publications produced by the ABS are listed in the *Catalogue of Publications and Products* (Cat. no. 1101.0). The ABS also issues, on Tuesdays and Fridays, a *Release Advice* (Cat. no. 1105.0) which lists publications to be released in the next few days. The *Catalogue* and *Release Advice* are available from any ABS office.

## FOR MORE INFORMATION . . .

- INTERNET* **www.abs.gov.au** the ABS web site is the best place to start for access to summary data from our latest publications, information about the ABS, advice about upcoming releases, our catalogue, and Australia Now—a statistical profile.
- LIBRARY* A range of ABS publications is available from public and tertiary libraries Australia-wide. Contact your nearest library to determine whether it has the ABS statistics you require, or visit our web site for a list of libraries.
- CPI INFOLINE* For current and historical Consumer Price Index data, call 1902 981 074 (call cost 77c per minute).
- DIAL-A-STATISTIC* For the latest figures for National Accounts, Balance of Payments, Labour Force, Average Weekly Earnings, Estimated Resident Population and the Consumer Price Index call 1900 986 400 (call cost 77c per minute).

## INFORMATION SERVICE

Data that is already published and can be provided within five minutes is free of charge. Our information consultants can also help you to access the full range of ABS information—ABS user pays services can be tailored to your needs, time frame and budget. Publications may be purchased. Specialists are on hand to help you with analytical or methodological advice.

- PHONE* 1300 135 070
- EMAIL* [client.services@abs.gov.au](mailto:client.services@abs.gov.au)
- FAX* 1300 135 211
- POST* Client Services, ABS, GPO Box 796, Sydney NSW 1041

## WHY NOT SUBSCRIBE?

ABS subscription services provide regular, convenient and prompt deliveries of ABS publications and products as they are released. Email delivery of monthly and quarterly publications is available.

- PHONE* 1300 366 323
- EMAIL* [subscriptions@abs.gov.au](mailto:subscriptions@abs.gov.au)
- FAX* 03 9615 7848
- POST* Subscription Services, ABS, GPO Box 2796Y, Melbourne Vic 3001



2522000007004

ISSN 0819 7423

RRP \$24.00