



1997 - 98

5220.0

AUSTRALIAN NATIONAL ACCOUNTS

STATE ACCOUNTS

EMBARGO: 11.30AM (CANBERRA TIME) FRI 14 MAY 1999

CONTENTS

	<i>page</i>
Notes	2
Analysis of results	3
 TABLES	
List of tables	7
Gross state product	11
Expenditure components of gross state product	18
Income components of gross state product	27
Total factor income	29
Household income	47
Agricultural income	57
 ADDITIONAL INFORMATION	
Explanatory notes	59

- For further information about these and related statistics, contact Ross Harvey on Canberra 02 6252 6713 for current price estimates, and Charles Aspden on Canberra 02 6252 6711 for volume estimates.

NOTES

ABOUT THIS PUBLICATION This publication contains State and Territory estimates of gross domestic product (referred to gross state product (GSP)) and its components, in current price and chain volume terms, for the years 1989–90 to 1997–98.

IN THIS ISSUE In this publication, the State accounts are presented on a basis consistent with the most recent international standard, the *System of National Accounts, 1993* (SNA93). For details of the changes associated with the implementation of SNA93, see *Information Paper: Upgraded Australian National Accounts* (ABS Cat. no. 5253.0), which was released on 4 November 1998. The impact of the SNA93 changes on some aggregates can be estimated—details are available on request.

The income accounts and capital accounts for general government and public non-financial corporations, by State and Territory, which were included in previous issues of this publication have been omitted, but they are available on PC-Ausstats, the Australian Bureau of Statistics online information service.

DATA VALUES AND ROUNDING All values, unless otherwise indicated, are shown in Australian dollars rounded to the nearest million.

Where figures have been rounded, discrepancies may occur between the sums of the component items and totals.

NEXT ISSUE The 1998–99 issue of this publication is expected to be released in November 1999.



ABBREVIATIONS

. .	not applicable
ABS	Australian Bureau of Statistics
GMI	gross mixed income
GOS	gross operating surplus
GSP	gross state product
n.a.	not available
SFD	state final demand
SITC Rev3	Standard Industrial Trade Classification, Revision 3
SNA93	System of National Accounts

W. McLennan
Australian Statistician

ANALYSIS OF RESULTS

GROWTH IN EXPERIMENTAL ESTIMATES OF GSP CHAIN VOLUME MEASURES

The estimates of gross state product (GSP) chain volume measures included in this publication are regarded as 'experimental'. The reasons are set out in the explanatory notes. Users should therefore exercise caution when using these estimates for economic analyses.

The table below compares annual rates of growth in experimental estimates of GSP chain volume measures and GSP chain volume measures per head of mean population over the seven years 1990–91 to 1997–98.

AVERAGE ANNUAL COMPOUND GROWTH RATES OF GSP CHAIN VOLUME MEASURES, 1990-91 TO 1997-98 (a)

	<i>GSP chain volume measures</i>	<i>GSP chain volume measures per head of population</i>
	%	%
New South Wales	3.1	2.1
Victoria	3.0	2.2
Queensland	5.2	2.9
South Australia	2.3	1.9
Western Australia	5.3	3.7
Tasmania	1.9	1.7
Northern Territory	3.3	1.3
Australian Capital Territory	3.0	1.9
Australia	3.6	2.4

(a) Experimental series. See paragraph 22 of Explanatory Notes

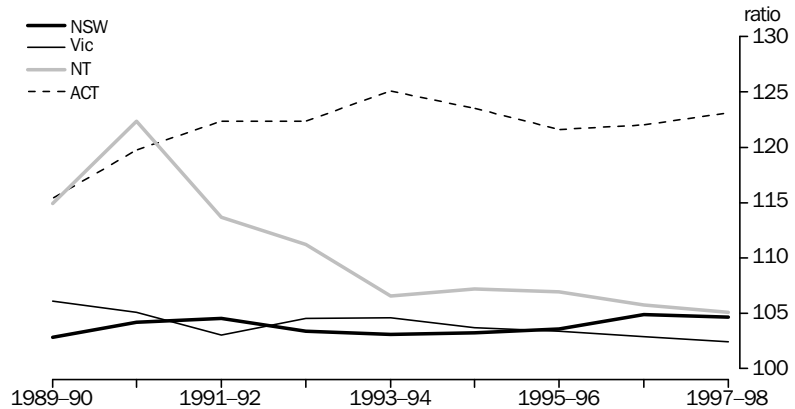
Over the period 1990–91 to 1997–98, growth in GSP chain volume measures varied considerably between the States, with growth being strongest in Western Australia and Queensland and weakest in Tasmania and South Australia. The dispersion of growth rates was less, but still significant, in terms of GSP chain volume measures per head of mean population.

GSP PER HEAD OF MEAN POPULATION (RATIO TO AUSTRALIA)

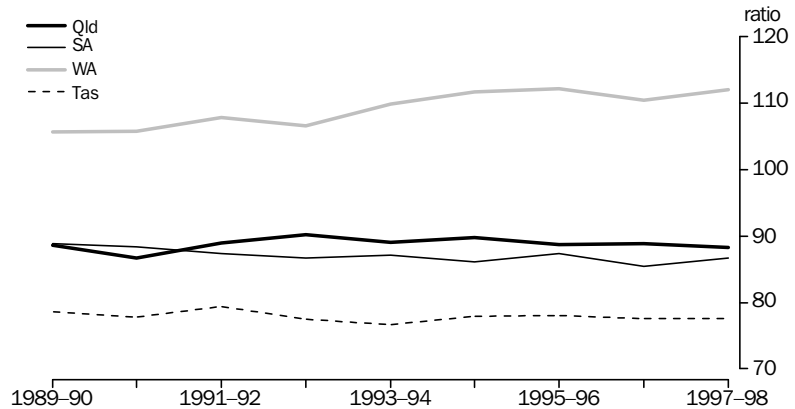
The graphs below show an index of GSP, in current prices, per head of mean population for each State and Territory divided by the Australian estimate for total gross domestic product (GDP) per head of mean population, for the period 1989–90 to 1997–98. It should be noted that GSP per head of mean population cannot be equated with the income of households in a particular State—see comments on gross household disposable income below.

ANALYSIS OF RESULTS *continued*

GSP PER HEAD OF MEAN POPULATION: ratio (Australia = 100)



GSP PER HEAD OF MEAN POPULATION: ratio (Australia = 100)



GSP per head of mean population in 1997-98 was above the national average in New South Wales, Victoria, Western Australia, the Northern Territory and the Australian Capital Territory. The Australian Capital Territory had the highest level in each of the years from 1989-90, except for 1990-91 when the Northern Territory had the highest level. GSP per head of mean population in Queensland, South Australia and Tasmania has not exceeded the national average during this period. South Australia, Western Australia and the Australian Capital Territory were the only States to experience an increase in this ratio in 1997-98.

INDUSTRY COMPOSITION OF TOTAL FACTOR INCOME

Individual industry contributions to total factor income (formerly referred to as gross state product at factor cost) for 1997-98 are shown below. In line with long-term trends, there has been a shift from goods producing industries to service providing industries over the period 1989-90 to 1997-98.

The main industries contributing to the relative decline in goods producing industries have been: agriculture, forestry and fishing; manufacturing; and electricity, gas and water. Service industries, except for wholesale and retail trade, have increased in relative importance in most States.

ANALYSIS OF RESULTS *continued*

INDUSTRY CONTRIBUTION TO TOTAL FACTOR INCOME, 1997-98 (a)

	NSW	Vic	Qld	SA	WA	Tas	NT	ACT	Aust
	%	%	%	%	%	%	%	%	%
Agriculture, forestry and fishing	3	3	4	6	5	6	3	—	3
Mining	2	3	6	3	20	2	17	—	5
Manufacturing	13	17	11	16	9	14	4	2	13
Electricity, gas & water	2	3	3	3	3	5	2	2	3
Construction	6	5	7	5	7	6	6	6	6
Wholesale trade	6	6	5	5	5	4	3	2	6
Retail trade	6	5	7	6	5	7	6	5	6
Accommodation, cafes and restaurants	3	2	3	2	2	3	3	2	2
Transport and storage	6	5	7	6	5	5	7	3	6
Communication	3	4	3	3	3	2	3	3	3
Finance & insurance	7	7	4	4	3	5	3	4	6
Property & business services	13	11	8	9	9	5	8	12	11
Government administration and defence	4	3	5	4	3	5	9	30	4
Education	4	5	5	5	4	5	6	6	5
Health and community services	6	7	6	8	6	9	6	5	6
Culture and recreational services	2	2	2	2	1	2	3	3	2
Personal and other services	2	2	2	3	2	2	3	3	2
Ownership of dwellings	11	9	9	9	7	9	6	8	9
General government(b)	2	2	2	2	2	3	2	3	2
Total	100	100	100	100	100	100	100	100	100

(a) Industries may not add to total due to rounding differences.

(b) State details for general government gross operating surplus by industry are not available.

GROSS HOUSEHOLD DISPOSABLE INCOME

The analysis of GSP per head of mean population above concentrates on the level of economic production (GSP) and its growth in current price terms. It does not provide a measure of incomes received by residents of a particular State, because a proportion of income generated in the production process may be transferred to other States or overseas (and conversely income may be received from other States or overseas). Gross household disposable income per head of mean population in 1997-98 is shown below.

GROSS HOUSEHOLD DISPOSABLE INCOME PER HEAD OF MEAN POPULATION, 1997-98

	\$
New South Wales	21 191
Victoria	20 419
Queensland	18 285
South Australia	18 748
Western Australia	19 807
Tasmania	16 686
Northern Territory	19 720
Australian Capital Territory	27 626
Australia	20 109

Gross household disposable income measures income received by residents (before the deduction of consumption of fixed capital but after deducting consumer debt interest, income taxes and other secondary income payments) from all sources, including compensation of employees, income from dwelling rent, unincorporated enterprises income, interest, dividends, and social assistance benefits such as age and invalid pensions, and unemployment benefits.

ANALYSIS OF RESULTS *continued*

Gross household disposable income per head of mean population was highest in the Australian Capital Territory and lowest in Tasmania. Differences between the States reflect differences, from State to State, in the impacts of a range of factors including the average level of compensation of employees received per employee, the proportion of the population in employment, the age distribution of the population, and differences in the level of dwelling rent (including that imputed to owner occupiers). For example, a significant reason for the high level of gross household disposable income per head of mean population in the Australian Capital Territory compared with other States is that the labour force participation rate is much higher there than in the rest of Australia.

LIST OF TABLES

page

GROSS STATE PRODUCT	1 Gross state product, chain volume measures 11 2 Gross state product per head of mean population, chain volume measures . . 12 3 Components of gross state product, chain volume measures 13 4 Gross state product at market prices 16 5 Gross state product at market prices per head of mean population 17
EXPENDITURE COMPONENTS OF GROSS STATE PRODUCT	6 Expenditure components of gross state product, New South Wales—current prices 18 7 Expenditure components of gross state product, Victoria—current prices . . . 19 8 Expenditure components of gross state product, Queensland—current prices 20 9 Expenditure components of gross state product, South Australia—current prices 21 10 Expenditure components of gross state product, Western Australia—current prices 22 11 Expenditure components of gross state product, Tasmania—current prices . . 23 12 Expenditure components of gross state product, Northern Territory—current prices 24 13 Expenditure components of gross state product, Australian Capital Territory—current prices 25 14 Expenditure components of gross domestic product, Australia—current prices 26
INCOME COMPONENTS OF GROSS STATE PRODUCT	15 Income components of gross state product—current prices 27
TOTAL FACTOR INCOME	16 Total factor income by industry and principal components, New South Wales—current prices 29 17 Total factor income by industry and principal components, Victoria—current prices 31 18 Total factor income by industry and principal components, Queensland—current prices 33 19 Total factor income by industry and principal components, South Australia—current prices 35 20 Total factor income by industry and principal components, Western Australia—current prices 37 21 Total factor income by industry and principal components, Tasmania—current prices 39 22 Total factor income by industry and principal components, Northern Territory—current prices 41 23 Total factor income by industry and principal components, Australian Capital Territory—current prices 43 24 Total factor income by industry and principal components, Australia—current prices 45

LIST OF TABLES *continued*

HOUSEHOLD INCOME	<p>25 Gross household income and gross household disposable income, value and per head of mean population—current prices 47</p> <p>26 Household income account, New South Wales—current prices 48</p> <p>27 Household income account, Victoria—current prices 49</p> <p>28 Household income account, Queensland—current prices 50</p> <p>29 Household income account, South Australia—current prices 51</p> <p>30 Household income account, Western Australia—current prices 52</p> <p>31 Household income account, Tasmania—current prices 53</p> <p>32 Household income account, Northern Territory—current prices 54</p> <p>33 Household income account, Australian Capital Territory—current prices 55</p> <p>34 Household income account, Australia—current prices 56</p>
AGRICULTURAL INCOME	<p>35 Agricultural income, current prices 57</p>
ADDITIONAL TABLES AVAILABLE ON PC-AUSSTATS	<p>36 State and local public non-financial corporations income account, New South Wales—current prices</p> <p>37 State and local public non-financial corporations income account, Victoria—current prices</p> <p>38 State and local public non-financial corporations income account, Queensland—current prices</p> <p>39 State and local public non-financial corporations income account, South Australia—current prices</p> <p>40 State and local public non-financial corporations income account, Western Australia—current prices</p> <p>41 State and local public non-financial corporations income account, Tasmania—current prices</p> <p>42 State and local public non-financial corporations income account, Northern Territory—current prices</p> <p>43 State and local public non-financial corporations income account, Australian Capital Territory—current prices</p> <p>44 Commonwealth public non-financial corporations income account, Australia—current prices</p> <p>45 Public non-financial corporations income account, Australia—current prices</p> <p>46 State and local public non-financial corporations capital account, New South Wales—current prices</p> <p>47 State and local public non-financial corporations capital account, Victoria—current prices</p> <p>48 State and local public non-financial corporations capital account, Queensland—current prices</p> <p>49 State and local public non-financial corporations capital account, South Australia—current prices</p> <p>50 State and local public non-financial corporations capital account, Western Australia—current prices</p> <p>51 State and local public non-financial corporations capital account, Tasmania—current prices</p> <p>52 State and local public non-financial corporations capital account, Northern Territory—current prices</p> <p>53 State and local public non-financial corporations capital account, Australian Capital Territory—current prices</p>

LIST OF TABLES *continued*

- 54** Commonwealth public non-financial corporations capital account, Australia—current prices
- 55** Public non-financial corporations capital account, Australia—current prices
- 56** State and local general government income account, New South Wales—current prices
- 57** State and local general government income account, Victoria—current prices
- 58** State and local general government income account, Queensland—current prices
- 59** State and local general government income account, South Australia—current prices
- 60** State and local general government income account, Western Australia—current prices
- 61** State and local general government income account, Tasmania—current prices
- 62** State and local general government income account, Northern Territory—current prices
- 63** State and local general government income account, Australian Capital Territory—current prices
- 64** Commonwealth general government income account, Australia—current prices
- 65** General government income account, Australia—current prices
- 66** State and local general government capital account, New South Wales—current prices
- 67** State and local general government capital account, Victoria—current prices
- 68** State and local general government capital account, Queensland—current prices
- 69** State and local general government capital account, South Australia—current prices
- 70** State and local general government capital account, Western Australia—current prices
- 71** State and local general government capital account, Tasmania—current prices
- 72** State and local general government capital account, Northern Territory—current prices
- 73** State and local general government capital account, Australian Capital Territory—current prices
- 74** National general government capital account, Australia—current prices
- 75** General government capital account, Australia—current prices

GROSS STATE PRODUCT, Chain Volume Measures(a)(b)

	1989-90	1990-91	1991-92	1992-93	1993-94	1994-95	1995-96	1996-97	1997-98
VALUES (\$M)									
New South Wales	n.a.	158 425	157 870	162 940	168 373	175 360	182 631	189 052	196 815
Victoria	n.a.	116 471	114 860	120 046	124 037	128 621	133 312	136 298	143 236
Queensland	n.a.	63 040	65 569	69 850	72 966	77 950	81 956	86 400	90 019
South Australia	n.a.	32 818	31 895	32 617	33 488	33 758	35 891	36 434	38 573
Western Australia	n.a.	42 029	43 818	44 938	48 796	52 370	55 109	56 884	60 464
Tasmania	n.a.	9 546	9 679	9 723	9 765	10 060	10 429	10 627	10 914
Northern Territory	n.a.	4 732	4 635	4 681	4 896	5 211	5 472	5 635	5 930
Australian Capital Territory	n.a.	9 090	9 166	9 446	9 992	10 349	10 671	10 873	11 196
Australia (GDP)	437 094	435 780	436 846	453 063	471 838	493 689	515 868	532 204	556 923

	PERCENTAGE CHANGES FROM PREVIOUS YEAR (%)								
New South Wales	n.a.	n.a.	-0.4	3.2	3.3	4.2	4.1	3.5	4.1
Victoria	n.a.	n.a.	-1.4	4.5	3.3	3.7	3.6	2.2	5.1
Queensland	n.a.	n.a.	4.0	6.5	4.5	6.8	5.1	5.4	4.2
South Australia	n.a.	n.a.	-2.8	2.3	2.7	0.8	6.3	1.5	5.9
Western Australia	n.a.	n.a.	4.3	2.6	8.6	7.3	5.2	3.2	6.3
Tasmania	n.a.	n.a.	1.4	0.5	0.4	3.0	3.7	1.9	2.7
Northern Territory	n.a.	n.a.	-2.0	1.0	4.6	6.4	5.0	3.0	5.2
Australian Capital Territory	n.a.	n.a.	0.8	3.1	5.8	3.6	3.1	1.9	3.0
Australia (GDP)	3.7	-0.3	0.2	3.7	4.1	4.6	4.5	3.2	4.6

	INDEX (1990-91 = 100.0)								
New South Wales	n.a.	100.0	99.6	102.8	106.3	110.7	115.3	119.3	124.2
Victoria	n.a.	100.0	98.6	103.1	106.5	110.4	114.5	117.0	123.0
Queensland	n.a.	100.0	104.0	110.8	115.7	123.7	130.0	137.1	142.8
South Australia	n.a.	100.0	97.2	99.4	102.0	102.9	109.4	111.0	117.5
Western Australia	n.a.	100.0	104.3	106.9	116.1	124.6	131.1	135.3	143.9
Tasmania	n.a.	100.0	101.4	101.9	102.3	105.4	109.2	111.3	114.3
Northern Territory	n.a.	100.0	98.0	98.9	103.5	110.1	115.6	119.1	125.3
Australian Capital Territory	n.a.	100.0	100.8	103.9	109.9	113.8	117.4	119.6	123.2
Australia (GDP)	100.3	100.0	100.2	104.0	108.3	113.3	118.4	122.1	127.8

(a) Experimental series. Users are cautioned these estimates are derived indirectly by calculating a deflator from the expenditure components of the state series concerned. Therefore, in general, the sum of the state estimates does not equal the estimates for Australia. It is emphasised that, at times, there may be movements that cannot be fully explained in the chain volume estimates of GSP through the use of this proxy deflator (see Technical Note on page vi of the 1993-94 issue of Australian National Accounts: State Accounts (ABS Catalogue No. 5220.0)).

(b) Reference year for chain volume measures is 1996-97.

GROSS STATE PRODUCT PER HEAD OF MEAN POPULATION, Chain Volume Measures(a)(b)

1989-90 1990-91 1991-92 1992-93 1993-94 1994-95 1995-96 1996-97 1997-98

VALUES (\$M)

New South Wales	n.a.	27 009	26 610	27 217	27 900	28 780	29 613	30 288	31 205
Victoria	n.a.	26 461	25 875	26 882	27 688	28 569	29 368	29 729	30 915
Queensland	n.a.	21 514	21 886	22 749	23 165	24 170	24 809	25 643	26 265
South Australia	n.a.	22 801	21 968	22 361	22 877	22 999	24 391	24 669	26 003
Western Australia	n.a.	25 860	26 590	26 935	28 871	30 477	31 494	31 909	33 327
Tasmania	n.a.	20 547	20 661	20 648	20 669	21 249	21 997	22 408	23 088
Northern Territory	n.a.	28 701	27 747	27 616	28 424	29 727	30 403	30 549	31 480
Australian Capital Territory	n.a.	31 845	31 409	31 797	33 295	34 136	34 827	35 239	36 380
Australia (GDP)		25 805	25 370	25 114	25 761	26 558	27 486	28 352	29 882

PERCENTAGE CHANGES FROM PREVIOUS YEAR (%)

New South Wales	n.a.	n.a.	-1.5	2.3	2.5	3.2	2.9	2.3	3.0
Victoria	n.a.	n.a.	-2.2	3.9	3.0	3.2	2.8	1.2	4.0
Queensland	n.a.	n.a.	1.7	3.9	1.8	4.3	2.6	3.4	2.4
South Australia	n.a.	n.a.	-3.7	1.8	2.3	0.5	6.0	1.1	5.4
Western Australia	n.a.	n.a.	2.8	1.3	7.2	5.6	3.3	1.3	4.4
Tasmania	n.a.	n.a.	0.6	-0.1	0.1	2.8	3.5	1.9	3.0
Northern Territory	n.a.	n.a.	-3.3	-0.5	2.9	4.6	2.3	0.5	3.0
Australian Capital Territory	n.a.	n.a.	-1.4	1.2	4.7	2.5	2.0	1.2	3.2
Australia (GDP)		2.1	-1.7	-1.0	2.6	3.1	3.5	1.9	3.5

INDEX (1990-91 = 100.0)

New South Wales	n.a.	100.0	98.5	100.8	103.3	106.6	109.6	112.1	115.5
Victoria	n.a.	100.0	97.8	101.6	104.6	108.0	111.0	112.4	116.8
Queensland	n.a.	100.0	101.7	105.7	107.7	112.3	115.3	119.2	122.1
South Australia	n.a.	100.0	96.3	98.1	100.3	100.9	107.0	108.2	114.0
Western Australia	n.a.	100.0	102.8	104.2	111.6	117.9	121.8	123.4	128.9
Tasmania	n.a.	100.0	100.6	100.5	100.6	103.4	107.1	109.1	112.4
Northern Territory	n.a.	100.0	96.7	96.2	99.0	103.6	105.9	106.4	109.7
Australian Capital Territory	n.a.	100.0	98.6	99.8	104.6	107.2	109.4	110.7	114.2
Australia (GDP)		101.7	100.0	99.0	101.5	104.7	108.3	111.8	113.8

(a) Experimental series. Users are cautioned these estimates are derived indirectly by calculating a deflator from the expenditure components of the state series concerned. Therefore, in general, the sum of the state estimates does not equal the estimates for Australia. It is emphasised that, at times, there may be movements that cannot be fully explained in the chain volume estimates of GSP through the use of this proxy deflator (see Technical Note on page vi of the 1993-94 issue of Australian National Accounts: State Accounts (ABS Catalogue No. 5220.0)).

(b) Reference year for chain volume measures is 1996-97.

COMPONENTS OF GROSS STATE PRODUCT, Chain Volume Measures(a)(b)

	1989-90	1990-91	1991-92	1992-93	1993-94	1994-95	1995-96	1996-97	1997-98
	\$m	\$m	\$m	\$m	\$m	\$m	\$m	\$m	\$m
NEW SOUTH WALES									
Government final consumption expenditure	26 335	27 037	27 153	28 013	28 048	29 260	30 516	31 274	32 085
Household final consumption expenditure	95 411	96 203	97 714	98 083	99 484	104 525	109 359	111 772	115 551
Private gross fixed capital formation	26 231	24 819	23 458	24 016	25 575	29 711	29 892	32 145	36 310
Public corporations gross fixed capital formation	5 050	4 839	4 912	5 075	4 255	4 443	4 111	3 437	3 557
General government gross fixed capital formation	3 409	3 444	3 324	3 533	3 793	3 986	3 626	4 211	4 186
State final demand	156 574	156 283	156 308	158 520	161 036	171 980	177 479	182 840	191 690
International trade—exports of goods	10 649	10 797	11 091	12 348	14 307	15 479	17 152	18 688	19 739
less International trade—imports of goods	20 343	19 391	20 302	21 665	23 484	28 526	31 165	33 872	36 979
Balancing item(c)	n.a.	10 736	10 773	13 737	16 513	16 427	19 165	21 397	22 366
Gross state product	n.a.	158 425	157 870	162 940	168 373	175 360	182 631	189 052	196 815
VICTORIA									
Government final consumption expenditure	20 181	20 588	21 036	20 999	20 433	20 916	21 469	21 768	22 489
Household final consumption expenditure	67 659	66 720	67 669	69 459	70 442	74 178	76 960	79 277	83 669
Private gross fixed capital formation	17 486	14 142	13 215	15 491	17 060	17 681	20 141	25 446	25 664
Public corporations gross fixed capital formation	3 993	3 251	2 857	1 530	2 147	3 026	2 434	1 009	2 191
General government gross fixed capital formation	1 863	1 773	1 758	2 067	2 122	2 378	2 121	2 391	2 457
State final demand	111 465	106 029	105 887	109 104	111 892	117 901	122 933	129 891	136 469
International trade—exports of goods	8 685	9 737	11 084	12 406	13 607	13 586	15 061	16 369	17 291
less International trade—imports of goods	17 099	14 950	15 225	16 597	18 699	22 082	22 687	24 946	27 082
Balancing item(c)	n.a.	15 655	13 114	15 134	17 236	19 215	18 005	14 985	16 558
Gross state product	n.a.	116 471	114 860	120 046	124 037	128 621	133 312	136 298	143 236
QUEENSLAND									
Government final consumption expenditure	11 694	12 032	12 840	13 238	13 490	13 818	14 951	14 952	15 939
Household final consumption expenditure	41 281	41 823	43 435	45 653	47 554	50 566	52 666	54 083	56 976
Private gross fixed capital formation	12 675	11 706	11 258	12 733	14 864	16 871	15 975	18 262	18 709
Public corporations gross fixed capital formation	2 202	2 140	2 335	2 181	1 907	2 970	2 639	2 806	2 505
General government gross fixed capital formation	1 979	2 025	2 172	2 287	2 174	2 253	2 527	2 825	3 050
State final demand	69 948	69 716	71 978	76 013	79 923	86 474	88 701	92 929	97 179
International trade—exports of goods	9 835	10 363	11 037	11 558	12 003	11 648	12 903	14 091	14 892
less International trade—imports of goods	4 714	5 215	6 084	6 205	6 634	7 566	7 661	8 512	9 267
Balancing item(c)	n.a.	-11 824	-11 362	-11 516	-12 325	-12 606	-11 986	-12 108	-12 785
Gross state product	n.a.	63 040	65 569	69 850	72 966	77 950	81 956	86 400	90 019
SOUTH AUSTRALIA									
Government final consumption expenditure	6 670	6 968	6 908	7 014	7 390	7 508	7 514	7 477	7 788
Household final consumption expenditure	19 918	20 699	20 807	20 604	21 110	22 112	22 905	22 920	24 003
Private gross fixed capital formation	5 101	4 704	4 317	4 309	4 287	5 277	4 967	5 772	6 652
Public corporations gross fixed capital formation	935	855	851	753	584	576	375	407	367
General government gross fixed capital formation	869	861	731	773	759	830	787	866	916
State final demand	33 595	34 118	33 597	33 433	34 093	36 310	36 518	37 444	39 726
International trade—exports of goods	2 648	3 143	3 640	3 887	4 068	4 308	4 806	5 227	5 524
less International trade—imports of goods	2 287	2 318	2 565	2 969	2 656	2 968	2 930	3 370	3 730
Balancing item(c)	n.a.	-2 125	-2 777	-1 735	-2 018	-3 894	-2 502	-2 866	-2 947
Gross state product	n.a.	32 818	31 895	32 617	33 488	33 758	35 891	36 434	38 573

(a) Experimental series. Users are cautioned these estimates are derived indirectly by calculating a deflator from the expenditure components of the state series concerned. Therefore, in general, the sum of the state estimates does not equal the estimates for Australia. It is emphasised that, at times, there may be movements that cannot be fully explained in the chain volume estimates of GSP through the use of this proxy deflator (see Technical Note on page vi of the 1993-94 issue of Australian National Accounts: State Accounts (ABS Catalogue No. 5220.0)).

(b) Reference year for chain volume measures is 1996-97.

(c) Calculated as the residual of GSP less state final demand less international trade in exports of goods plus international trade in imports of goods for each state in Australia. The balancing item implicitly comprises changes in inventories, net international trade in services, total net interstate trade and statistical discrepancy (E).

	1989-90	1990-91	1991-92	1992-93	1993-94	1994-95	1995-96	1996-97	1997-98
	\$m	\$m	\$m	\$m	\$m	\$m	\$m	\$m	\$m
WESTERN AUSTRALIA									
Government final consumption expenditure	7 292	7 498	7 720	7 835	7 799	7 804	8 316	8 420	9 132
Household final consumption expenditure	23 146	23 334	24 183	25 301	26 648	27 788	28 934	29 204	30 562
Private gross fixed capital formation	10 070	8 331	8 079	9 813	10 700	12 150	12 684	13 196	18 408
Public corporations gross fixed capital formation	1 699	1 413	1 150	1 257	1 021	863	1 381	1 686	-637
General government gross fixed capital formation	1 111	1 017	980	1 081	978	1 028	1 187	1 101	1 302
State final demand	43 477	41 571	42 038	45 237	47 097	49 616	52 486	53 606	58 766
International trade—exports of goods	9 720	12 258	14 408	14 853	16 199	16 695	18 706	20 564	21 735
less International trade—imports of goods	4 135	3 563	3 580	4 561	4 481	5 480	5 855	6 685	8 289
Balancing item(c)	n.a.	-8 237	-9 048	-10 591	-10 019	-8 461	-10 229	-10 602	-11 748
Gross state product	n.a.	42 029	43 818	44 938	48 796	52 370	55 109	56 884	60 464
TASMANIA									
Government final consumption expenditure	2 267	2 340	2 312	2 368	2 400	2 483	2 562	2 604	2 561
Household final consumption expenditure	6 107	6 321	6 432	6 529	6 679	6 792	7 021	7 118	7 373
Private gross fixed capital formation	1 602	1 295	1 289	1 294	1 333	1 611	1 545	1 592	1 530
Public corporations gross fixed capital formation	360	374	271	277	383	228	281	265	273
General government gross fixed capital formation	298	232	223	288	254	263	290	272	257
State final demand	10 679	10 556	10 524	10 760	11 040	11 383	11 700	11 850	11 994
International trade—exports of goods	1 148	1 217	1 377	1 438	1 421	1 464	1 620	1 771	1 860
less International trade—imports of goods	381	317	311	335	448	331	319	392	351
Balancing item(c)	n.a.	-1 909	-1 912	-2 140	-2 247	-2 455	-2 572	-2 602	-2 590
Gross state product	n.a.	9 546	9 679	9 723	9 765	10 060	10 429	10 627	10 914
NORTHERN TERRITORY									
Government final consumption expenditure	1 466	1 562	1 609	1 667	1 735	1 811	1 871	1 916	2 179
Household final consumption expenditure	2 181	2 250	2 317	2 418	2 430	2 663	2 886	2 824	3 032
Private gross fixed capital formation	852	889	702	776	1 051	1 051	1 325	1 333	1 674
Public corporations gross fixed capital formation	194	155	103	90	87	130	75	76	71
General government gross fixed capital formation	241	235	207	185	189	243	247	281	235
State final demand	4 957	5 110	4 950	5 142	5 493	5 906	6 405	6 430	7 191
International trade—exports of goods	1 494	1 727	1 615	1 347	1 385	1 127	1 260	1 420	1 500
less International trade—imports of goods	515	572	431	261	279	347	370	384	619
Balancing item(c)	n.a.	-1 533	-1 499	-1 547	-1 702	-1 475	-1 823	-1 831	-2 142
Gross state product	n.a.	4 732	4 635	4 681	4 896	5 211	5 472	5 635	5 930
AUSTRALIAN CAPITAL TERRITORY									
Government final consumption expenditure	7 457	8 135	8 118	8 192	9 111	9 467	9 616	9 395	9 681
Household final consumption expenditure	4 450	4 732	4 938	5 117	5 313	5 458	5 590	5 733	6 074
Private gross fixed capital formation	969	877	1 167	1 196	1 224	964	928	984	1 163
Public corporations gross fixed capital formation	170	160	126	137	120	148	158	140	131
General government gross fixed capital formation	431	444	460	430	453	410	386	389	-39
State final demand	13 561	14 399	14 903	15 154	16 291	16 457	16 676	16 641	17 010
International trade—exports of goods	3	3	4	3	5	7	8	9	10
less International trade—imports of goods	26	24	23	15	17	15	8	12	10
Balancing item(c)	n.a.	-5 287	-5 717	-5 696	-6 287	-6 100	-6 005	-5 766	-5 814
Gross state product	n.a.	9 090	9 166	9 446	9 992	10 349	10 671	10 873	11 196

(a) Experimental series. Users are cautioned these estimates are derived indirectly by calculating a deflator from the expenditure components of the state series concerned. Therefore, in general, the sum of the state estimates does not equal the estimates for Australia. It is emphasised that, at times, there may be movements that cannot be fully explained in the chain volume estimates of GSP through the use of this proxy deflator (see Technical Note on page vi of the 1993-94 issue of Australian National Accounts: State Accounts (ABS Catalogue No. 5220.0)).

(b) Reference year for chain volume measures is 1996-97.

(c) Calculated as the residual of GSP less state final demand less international trade in exports of goods plus international trade in imports of goods for each state in Australia. The balancing item implicitly comprises changes in inventories, net international trade in services, total net interstate trade and statistical discrepancy (E).

COMPONENTS OF GROSS STATE PRODUCT, Chain Volume Measures(a)(b) *continued*

	1989-90	1990-91	1991-92	1992-93	1993-94	1994-95	1995-96	1996-97	1997-98
	\$m	\$m	\$m	\$m	\$m	\$m	\$m	\$m	\$m
AUSTRALIA									
Government final consumption expenditure	83 414	86 198	87 742	89 386	90 406	93 057	96 813	97 810	101 855
Household final consumption expenditure	260 148	262 058	267 467	273 137	279 626	294 057	306 312	312 935	327 236
Private gross fixed capital formation	74 986	66 764	63 486	69 629	76 095	85 316	87 457	98 729	110 110
Public corporations gross fixed capital formation	14 603	13 186	12 606	11 300	10 503	12 384	11 453	9 826	8 457
General government gross fixed capital formation	10 201	10 031	9 854	10 644	10 723	11 392	11 171	12 335	12 363
Domestic final demand	444 406	437 808	440 196	453 358	466 837	496 001	512 876	531 635	560 021
International trade—exports of goods	44 333	49 239	54 124	57 688	62 878	64 318	71 514	78 139	82 551
less International trade—imports of goods	49 436	46 274	48 400	52 438	56 558	67 247	71 015	78 172	86 326
Balancing item(c)	-2 209	-4 992	-9 074	-5 546	-1 320	617	2 493	607	677
Gross domestic product	437 094	435 780	436 846	453 063	471 838	493 689	515 868	532 204	556 923

(a) Experimental series. Users are cautioned these estimates are derived indirectly by calculating a deflator from the expenditure components of the state series concerned. Therefore, in general, the sum of the state estimates does not equal the estimates for Australia. It is emphasised that, at times, there may be movements that cannot be fully explained in the chain volume estimates of GSP through the use of this proxy deflator (see Technical Note on page vi of the 1993-94 issue of Australian National Accounts: State Accounts (ABS Catalogue No. 5220.0)).

(b) Reference year for chain volume measures is 1996-97.

(c) Calculated as the residual of GDP less domestic final demand less international trade in exports of goods plus international trade in imports of goods. The balancing item implicitly comprises changes in inventories, net international trade in services and statistical discrepancy (E).

GROSS STATE PRODUCT AT MARKET PRICES

1989-90 1990-91 1991-92 1992-93 1993-94 1994-95 1995-96 1996-97 1997-98

VALUES (\$M)

New South Wales	135 055	141 017	144 612	150 346	157 399	166 188	178 662	189 052	200 160
Victoria	104 426	106 748	106 678	113 270	118 534	123 321	131 202	136 298	143 686
Queensland	57 487	58 585	62 160	67 221	70 962	76 432	81 954	86 400	91 732
South Australia	28 662	29 352	29 591	30 708	32 255	33 383	35 928	36 434	38 966
Western Australia	38 198	39 652	41 446	43 179	46 996	50 721	54 923	56 884	61 582
Tasmania	8 157	8 341	8 675	8 853	9 160	9 740	10 338	10 627	11 104
Northern Territory	4 217	4 653	4 434	4 578	4 644	4 967	5 379	5 635	5 998
Australian Capital Territory	7 291	7 888	8 335	8 827	9 499	9 894	10 419	10 873	11 477
Australia (GDP)	383 494	396 236	405 931	426 982	449 448	474 646	508 806	532 204	564 705

RATIO (AUSTRALIA = 100.0)

New South Wales	35.2	35.6	35.6	35.2	35.0	35.0	35.1	35.5	35.4
Victoria	27.2	26.9	26.3	26.5	26.4	26.0	25.8	25.6	25.4
Queensland	15.0	14.8	15.3	15.7	15.8	16.1	16.1	16.2	16.2
South Australia	7.5	7.4	7.3	7.2	7.2	7.0	7.1	6.8	6.9
Western Australia	10.0	10.0	10.2	10.1	10.5	10.7	10.8	10.7	10.9
Tasmania	2.1	2.1	2.1	2.1	2.0	2.1	2.0	2.0	2.0
Northern Territory	1.1	1.2	1.1	1.1	1.0	1.0	1.1	1.1	1.1
Australian Capital Territory	1.9	2.0	2.1	2.1	2.1	2.1	2.0	2.0	2.0
Australia (GDP)	100.0	100.0	100.0	100.0	100.0	100.0	100.0	100.0	100.0

PERCENTAGE CHANGES FROM PREVIOUS YEAR (%)

New South Wales	n.a.	4.4	2.5	4.0	4.7	5.6	7.5	5.8	5.9
Victoria	n.a.	2.2	-0.1	6.2	4.6	4.0	6.4	3.9	5.4
Queensland	n.a.	1.9	6.1	8.1	5.6	7.7	7.2	5.4	6.2
South Australia	n.a.	2.4	0.8	3.8	5.0	3.5	7.6	1.4	6.9
Western Australia	n.a.	3.8	4.5	4.2	8.8	7.9	8.3	3.6	8.3
Tasmania	n.a.	2.3	4.0	2.1	3.5	6.3	6.1	2.8	4.5
Northern Territory	n.a.	10.3	-4.7	3.2	1.4	7.0	8.3	4.8	6.4
Australian Capital Territory	n.a.	8.2	5.7	5.9	7.6	4.2	5.3	4.4	5.6
Australia (GDP)	9.3	3.3	2.4	5.2	5.3	5.6	7.2	4.6	6.1

GROSS STATE PRODUCT AT MARKET PRICES PER HEAD OF MEAN POPULATION

1989-90 1990-91 1991-92 1992-93 1993-94 1994-95 1995-96 1996-97 1997-98

VALUES (\$M)

New South Wales	23 275	24 041	24 375	25 113	26 082	27 274	28 970	30 288	31 735
Victoria	24 012	24 252	24 032	25 364	26 460	27 392	28 903	29 729	31 012
Queensland	20 065	19 994	20 748	21 893	22 528	23 699	24 808	25 643	26 765
South Australia	20 106	20 393	20 381	21 052	22 035	22 744	24 416	24 669	26 268
Western Australia	23 923	24 398	25 151	25 880	27 805	29 518	31 388	31 909	33 943
Tasmania	17 791	17 952	18 519	18 801	19 390	20 573	21 806	22 408	23 489
Northern Territory	26 006	28 225	26 541	27 004	26 956	28 336	29 889	30 549	31 838
Australian Capital Territory	26 120	27 632	28 560	29 714	31 652	32 633	34 006	35 239	37 294
Australia (GDP)	22 640	23 068	23 336	24 278	25 298	26 426	27 964	28 884	30 299

RATIO (AUSTRALIA = 100.0)

New South Wales	102.8	104.2	104.5	103.4	103.1	103.2	103.6	104.9	104.7
Victoria	106.1	105.1	103.0	104.5	104.6	103.7	103.4	102.9	102.4
Queensland	88.6	86.7	88.9	90.2	89.1	89.7	88.7	88.8	88.3
South Australia	88.8	88.4	87.3	86.7	87.1	86.1	87.3	85.4	86.7
Western Australia	105.7	105.8	107.8	106.6	109.9	111.7	112.2	110.5	112.0
Tasmania	78.6	77.8	79.4	77.4	76.6	77.9	78.0	77.6	77.5
Northern Territory	114.9	122.4	113.7	111.2	106.6	107.2	106.9	105.8	105.1
Australian Capital Territory	115.4	119.8	122.4	122.4	125.1	123.5	121.6	122.0	123.1
Australia (GDP)	100.0	100.0	100.0	100.0	100.0	100.0	100.0	100.0	100.0

PERCENTAGE CHANGES FROM PREVIOUS YEAR (%)

New South Wales	n.a.	3.3	1.4	3.0	3.9	4.6	6.2	4.5	4.8
Victoria	n.a.	1.0	-0.9	5.5	4.3	3.5	5.5	2.9	4.3
Queensland	n.a.	-0.4	3.8	5.5	2.9	5.2	4.7	3.4	4.4
South Australia	n.a.	1.4	-0.1	3.3	4.7	3.2	7.4	1.0	6.5
Western Australia	n.a.	2.0	3.1	2.9	7.4	6.2	6.3	1.7	6.4
Tasmania	n.a.	0.9	3.2	1.5	3.1	6.1	6.0	2.8	4.8
Northern Territory	n.a.	8.5	-6.0	1.7	-0.2	5.1	5.5	2.2	4.2
Australian Capital Territory	n.a.	5.8	3.4	4.0	6.5	3.1	4.2	3.6	5.8
Australia (GDP)	7.7	1.9	1.2	4.0	4.2	4.5	5.8	3.3	4.9

EXPENDITURE COMPONENTS OF GROSS STATE PRODUCT, New South Wales—Current
Prices

	1989-90	1990-91	1991-92	1992-93	1993-94	1994-95	1995-96	1996-97	1997-98
	\$m	\$m	\$m	\$m	\$m	\$m	\$m	\$m	\$m
Final consumption expenditure									
General government									
National	8 445	8 961	9 526	10 052	9 970	10 472	10 912	10 881	11 445
State and local	13 736	14 991	16 130	16 728	16 817	17 801	19 096	20 393	21 398
<i>Total general government final consumption expenditure</i>	<i>22 181</i>	<i>23 952</i>	<i>25 656</i>	<i>26 780</i>	<i>26 787</i>	<i>28 272</i>	<i>30 008</i>	<i>31 274</i>	<i>32 843</i>
Households									
Food	8 914	9 345	9 663	9 922	10 324	11 128	12 396	12 821	13 431
Alcoholic beverages and tobacco	2 484	2 665	2 718	2 892	2 882	2 997	3 394	3 314	3 357
Clothing and footwear	3 845	3 950	4 190	4 070	4 068	4 214	4 503	4 420	4 411
Housing, water, electricity, gas and other fuels	17 813	19 094	20 014	20 935	21 776	22 886	24 481	25 848	27 329
Furnishings and other household equipment	4 915	4 947	5 287	5 268	5 470	6 018	6 385	6 352	6 321
Health	2 945	3 308	3 544	3 486	3 635	3 776	3 859	3 897	3 918
Transport	10 362	10 823	10 984	11 385	11 682	12 871	13 362	14 020	14 850
Communications	1 139	1 211	1 379	1 539	1 693	1 873	2 130	2 308	2 509
Recreation and culture	8 497	9 044	9 679	9 968	10 272	11 054	12 152	12 821	13 529
Education services	1 298	1 485	1 582	1 653	1 728	1 843	1 973	2 155	2 365
Hotels, cafes and restaurants	6 488	6 803	6 843	6 896	7 211	7 873	8 633	8 696	9 135
Miscellaneous goods and services	10 730	12 093	12 641	13 014	13 067	13 128	14 226	15 083	16 315
Net expenditure interstate	31	29	29	29	33	34	37	38	38
<i>Total household final consumption expenditure</i>	<i>79 458</i>	<i>84 797</i>	<i>88 553</i>	<i>91 058</i>	<i>93 841</i>	<i>99 697</i>	<i>107 530</i>	<i>111 773</i>	<i>117 507</i>
<i>Total final consumption expenditure</i>	<i>101 639</i>	<i>108 749</i>	<i>114 209</i>	<i>117 838</i>	<i>120 628</i>	<i>127 969</i>	<i>137 538</i>	<i>143 047</i>	<i>150 350</i>
Gross fixed capital formation									
Private									
Dwellings	6 549	6 246	6 394	7 069	7 762	8 607	8 554	8 528	10 128
Other buildings and structures	6 279	6 404	4 871	3 664	3 535	4 430	5 465	5 747	6 419
Machinery and equipment	9 481	8 852	8 549	9 709	10 638	12 998	12 442	13 104	14 740
Livestock	370	115	54	192	235	200	339	294	351
Intangible fixed assets	1 188	1 237	1 339	1 651	1 715	1 761	1 748	2 033	2 136
Ownership transfer costs	1 776	1 583	1 693	1 724	2 051	2 035	1 978	2 440	2 891
<i>Total private gross fixed capital formation</i>	<i>25 642</i>	<i>24 435</i>	<i>22 899</i>	<i>24 008</i>	<i>25 937</i>	<i>30 030</i>	<i>30 526</i>	<i>32 145</i>	<i>36 666</i>
Public									
Public corporations									
Commonwealth	2 155	1 834	1 952	1 770	1 322	1 596	1 637	1 625	1 515
State and local	2 502	2 773	2 817	3 041	2 832	2 829	2 519	1 812	2 128
<i>Total public corporations gross fixed capital formation</i>	<i>4 657</i>	<i>4 606</i>	<i>4 769</i>	<i>4 812</i>	<i>4 154</i>	<i>4 425</i>	<i>4 157</i>	<i>3 437</i>	<i>3 643</i>
General government									
National	1 037	963	994	1 022	1 048	1 121	1 093	1 078	1 062
State and local	2 345	2 517	2 412	2 593	2 804	2 904	2 598	3 133	3 094
<i>Total general government gross fixed capital formation</i>	<i>3 382</i>	<i>3 480</i>	<i>3 406</i>	<i>3 615</i>	<i>3 852</i>	<i>4 025</i>	<i>3 691</i>	<i>4 211</i>	<i>4 156</i>
<i>Total public gross fixed capital formation</i>	<i>8 039</i>	<i>8 087</i>	<i>8 176</i>	<i>8 427</i>	<i>8 007</i>	<i>8 450</i>	<i>7 847</i>	<i>7 647</i>	<i>7 799</i>
<i>Total gross fixed capital formation</i>	<i>33 681</i>	<i>32 522</i>	<i>31 075</i>	<i>32 435</i>	<i>33 943</i>	<i>38 479</i>	<i>38 373</i>	<i>39 792</i>	<i>44 465</i>
State final demand	135 319	141 271	145 284	150 273	154 571	166 449	175 911	182 840	194 814
International trade—exports of goods	12 848	12 336	12 171	13 814	15 549	16 104	17 641	18 688	20 929
less International trade—imports of goods	23 315	22 305	23 242	26 343	28 350	32 900	34 716	33 872	37 811
Balancing item(a)	10 203	9 714	10 399	12 602	15 629	16 536	19 826	21 396	22 227
Gross state product	135 055	141 017	144 612	150 346	157 399	166 188	178 662	189 052	200 160

(a) Calculated as the residual of GSP less state final demand less international trade in exports of goods plus international trade in imports of goods. The balancing item implicitly comprises changes in inventories, net international trade in services, total net interstate trade and statistical discrepancy (E).

EXPENDITURE COMPONENTS OF GROSS STATE PRODUCT, Victoria—Current Prices

	1989-90	1990-91	1991-92	1992-93	1993-94	1994-95	1995-96	1996-97	1997-98
	\$m	\$m	\$m	\$m	\$m	\$m	\$m	\$m	\$m
Final consumption expenditure									
General government									
National	6 067	6 566	7 054	7 400	7 361	7 483	7 851	7 815	8 150
State and local	10 763	11 553	12 386	12 972	12 455	12 619	13 226	13 953	14 733
<i>Total general government final consumption expenditure</i>	<i>16 829</i>	<i>18 119</i>	<i>19 440</i>	<i>20 372</i>	<i>19 817</i>	<i>20 101</i>	<i>21 077</i>	<i>21 768</i>	<i>22 883</i>
Households									
Food	6 774	6 887	7 194	7 458	7 740	8 343	8 990	9 432	9 789
Alcoholic beverages and tobacco	1 700	1 875	1 937	1 995	2 107	2 167	2 438	2 437	2 460
Clothing and footwear	2 909	2 901	3 037	3 148	3 034	3 037	3 037	2 995	3 255
Housing, water, electricity, gas and other fuels	11 592	12 671	13 171	13 487	13 896	14 419	15 070	15 866	16 708
Furnishings and other household equipment	3 616	3 487	3 626	3 768	3 819	3 915	4 074	4 318	4 670
Health	2 194	2 417	2 673	2 976	3 112	3 186	3 287	3 392	3 461
Transport	7 278	7 408	7 428	7 871	8 155	8 777	9 233	9 680	10 289
Communications	809	873	1 003	1 133	1 254	1 382	1 565	1 696	1 839
Recreation and culture	5 877	5 897	6 128	6 545	7 125	8 304	9 141	9 706	10 356
Education services	1 252	1 269	1 408	1 526	1 612	1 673	1 804	1 941	2 125
Hotels, cafes and restaurants	4 222	4 383	4 662	4 779	5 002	5 481	5 883	6 071	6 315
Miscellaneous goods and services	8 046	8 991	9 311	9 616	9 481	9 553	10 087	10 675	12 549
Net expenditure interstate	636	764	782	811	825	891	985	1 067	1 131
<i>Total household final consumption expenditure</i>	<i>56 902</i>	<i>59 824</i>	<i>62 359</i>	<i>65 113</i>	<i>67 163</i>	<i>71 131</i>	<i>75 593</i>	<i>79 278</i>	<i>84 947</i>
<i>Total final consumption expenditure</i>	<i>73 731</i>	<i>77 943</i>	<i>81 799</i>	<i>85 485</i>	<i>86 980</i>	<i>91 232</i>	<i>96 670</i>	<i>101 046</i>	<i>107 830</i>
Gross fixed capital formation									
Private									
Dwellings	4 563	3 755	3 591	4 180	4 946	5 247	5 006	5 555	6 851
Other buildings and structures	4 890	3 573	2 473	2 519	2 462	2 163	3 196	4 763	4 285
Machinery and equipment	6 737	5 429	5 390	6 975	7 722	8 284	9 946	12 070	10 933
Livestock	205	92	78	176	205	167	223	271	298
Intangible fixed assets	923	932	942	1 160	1 274	1 271	1 292	1 479	1 538
Ownership transfer costs	1 385	1 119	1 059	1 025	1 230	1 100	1 294	1 309	1 702
<i>Total private gross fixed capital formation</i>	<i>18 702</i>	<i>14 900</i>	<i>13 534</i>	<i>16 035</i>	<i>17 840</i>	<i>18 233</i>	<i>20 957</i>	<i>25 446</i>	<i>25 607</i>
Public									
Public corporations									
Commonwealth	1 391	1 407	1 144	938	774	1 085	1 221	1 212	1 101
State and local	2 293	1 670	1 545	625	1 416	1 831	1 201	-204	1 082
<i>Total public corporations gross fixed capital formation</i>	<i>3 684</i>	<i>3 077</i>	<i>2 689</i>	<i>1 563</i>	<i>2 190</i>	<i>2 916</i>	<i>2 422</i>	<i>1 009</i>	<i>2 183</i>
General government									
National	703	690	717	689	850	786	809	780	779
State and local	1 373	1 308	1 219	1 537	1 412	1 701	1 430	1 611	1 629
<i>Total general government gross fixed capital formation</i>	<i>2 076</i>	<i>1 998</i>	<i>1 936</i>	<i>2 226</i>	<i>2 262</i>	<i>2 487</i>	<i>2 239</i>	<i>2 391</i>	<i>2 408</i>
<i>Total public gross fixed capital formation</i>	<i>5 760</i>	<i>5 075</i>	<i>4 624</i>	<i>3 789</i>	<i>4 452</i>	<i>5 403</i>	<i>4 661</i>	<i>3 400</i>	<i>4 591</i>
<i>Total gross fixed capital formation</i>	<i>24 462</i>	<i>19 975</i>	<i>18 158</i>	<i>19 824</i>	<i>22 292</i>	<i>23 636</i>	<i>25 618</i>	<i>28 845</i>	<i>30 198</i>
State final demand	98 194	97 918	99 957	105 309	109 271	114 868	122 288	129 892	138 028
International trade—exports of goods	8 589	8 918	9 747	11 353	12 681	13 378	15 918	16 369	16 449
less International trade—imports of goods	16 740	14 850	15 304	18 082	20 667	23 874	24 511	24 946	28 355
Balancing item(a)	14 383	14 762	12 278	14 690	17 249	18 950	17 506	14 984	17 563
Gross state product	104 426	106 748	106 678	113 270	118 534	123 321	131 202	136 298	143 686

(a) Calculated as the residual of GSP less state final demand less international trade in exports of goods plus international trade in imports of goods. The balancing item implicitly comprises changes in inventories, net international trade in services, total net interstate trade and statistical discrepancy (E).

EXPENDITURE COMPONENTS OF GROSS STATE PRODUCT, Queensland—Current Prices

	1989-90	1990-91	1991-92	1992-93	1993-94	1994-95	1995-96	1996-97	1997-98
	\$m	\$m	\$m	\$m	\$m	\$m	\$m	\$m	\$m
Final consumption expenditure									
General government									
National	3 901	4 152	4 682	4 918	5 208	5 322	5 564	5 525	5 710
State and local	5 925	6 483	7 184	7 551	7 719	8 083	9 174	9 427	10 473
<i>Total general government final consumption expenditure</i>	9 825	10 635	11 866	12 468	12 927	13 404	14 738	14 952	16 183
Households									
Food	4 567	4 794	5 075	5 471	5 806	6 559	7 187	7 435	7 841
Alcoholic beverages and tobacco	1 147	1 224	1 240	1 507	1 616	1 701	1 802	1 973	2 140
Clothing and footwear	1 866	1 870	1 998	2 050	2 178	2 355	2 302	2 255	2 505
Housing, water, electricity, gas and other fuels	6 556	7 250	7 858	8 365	8 963	9 548	10 116	10 630	11 161
Furnishings and other household equipment	2 317	2 449	2 712	2 916	3 166	3 322	3 283	3 247	3 418
Health	1 207	1 399	1 506	1 586	1 701	1 808	1 938	2 053	2 132
Transport	4 587	5 030	5 129	5 459	5 672	6 145	6 446	6 686	7 049
Communications	536	590	689	798	895	986	1 120	1 219	1 324
Recreation and culture	3 605	3 885	4 261	4 639	5 098	5 543	5 962	5 991	6 438
Education services	517	649	708	741	826	903	991	1 091	1 202
Hotels, cafes and restaurants	2 964	3 147	3 388	3 739	4 066	4 581	5 021	5 246	5 719
Miscellaneous goods and services	4 705	5 378	5 761	6 212	6 291	6 400	6 907	7 360	8 103
Net expenditure interstate	-340	-802	-814	-849	-881	-945	-1 031	-1 101	-1 170
<i>Total household final consumption expenditure</i>	34 233	36 862	39 509	42 635	45 396	48 908	52 044	54 084	57 861
<i>Total final consumption expenditure</i>	44 058	47 497	51 375	55 103	58 323	62 312	66 782	69 036	74 044
Gross fixed capital formation									
Private									
Dwellings	3 745	3 630	3 951	4 990	5 704	6 070	4 959	5 270	5 922
Other buildings and structures	2 961	2 370	2 056	2 192	2 381	3 014	3 241	4 125	3 706
Machinery and equipment	3 819	3 849	3 353	3 736	5 048	6 124	6 217	6 780	6 925
Livestock	185	43	20	106	127	143	255	227	237
Intangible fixed assets	436	459	453	524	558	629	691	763	735
Ownership transfer costs	1 077	925	939	1 025	1 139	1 106	996	1 098	1 215
<i>Total private gross fixed capital formation</i>	12 222	11 276	10 771	12 573	14 957	17 087	16 360	18 262	18 739
Public									
Public corporations									
Commonwealth	993	872	938	768	806	1 084	983	972	755
State and local	1 219	1 353	1 539	1 531	1 046	1 847	1 675	1 835	1 792
<i>Total public corporations gross fixed capital formation</i>	2 213	2 226	2 477	2 299	1 852	2 930	2 658	2 806	2 547
General government									
National	343	329	400	385	442	481	494	465	361
State and local	1 516	1 660	1 837	1 960	1 778	1 807	2 084	2 360	2 681
<i>Total general government gross fixed capital formation</i>	1 859	1 989	2 237	2 345	2 220	2 288	2 578	2 825	3 042
<i>Total public gross fixed capital formation</i>	4 072	4 215	4 714	4 644	4 072	5 219	5 236	5 631	5 589
<i>Total gross fixed capital formation</i>	16 293	15 490	15 485	17 216	19 029	22 306	21 596	23 893	24 328
State final demand	60 352	62 988	66 860	72 320	77 352	84 618	88 377	92 929	98 373
International trade—exports of goods	10 724	10 981	11 173	12 232	12 390	12 908	14 036	14 091	16 975
less International trade—imports of goods	4 245	4 886	5 609	6 312	6 837	7 768	8 001	8 512	9 584
Balancing item(a)	-9 344	-10 497	-10 264	-11 019	-11 942	-13 326	-12 459	-12 109	-14 031
Gross state product	57 487	58 585	62 160	67 221	70 962	76 432	81 954	86 400	91 732

(a) Calculated as the residual of GSP less state final demand less international trade in exports of goods plus international trade in imports of goods. The balancing item implicitly comprises changes in inventories, net international trade in services, total net interstate trade and statistical discrepancy (E).

EXPENDITURE COMPONENTS OF GROSS STATE PRODUCT, South Australia—Current Prices

	1989-90	1990-91	1991-92	1992-93	1993-94	1994-95	1995-96	1996-97	1997-98
	\$m	\$m	\$m	\$m	\$m	\$m	\$m	\$m	\$m
Final consumption expenditure									
General government									
National	2 059	2 275	2 307	2 414	2 508	2 555	2 682	2 672	2 770
State and local	3 520	3 830	4 041	4 147	4 716	4 762	4 751	4 806	5 112
<i>Total general government final consumption expenditure</i>	5 579	6 105	6 348	6 561	7 224	7 317	7 433	7 477	7 882
Households									
Food	2 003	2 183	2 246	2 222	2 391	2 571	2 810	2 975	3 234
Alcoholic beverages and tobacco	546	613	628	674	750	780	786	731	695
Clothing and footwear	943	972	941	929	952	1 005	1 013	935	992
Housing, water, electricity, gas and other fuels	3 256	3 570	3 814	3 965	4 082	4 222	4 335	4 467	4 626
Furnishings and other household equipment	1 138	1 182	1 202	1 234	1 292	1 370	1 422	1 358	1 501
Health	701	804	897	868	915	943	995	983	1 011
Transport	2 135	2 372	2 364	2 444	2 500	2 638	2 762	2 839	2 994
Communications	274	289	323	357	386	414	466	506	549
Recreation and culture	1 642	1 787	1 874	1 902	1 989	2 195	2 411	2 461	2 610
Education services	294	314	362	379	400	432	462	495	542
Hotels, cafes and restaurants	1 212	1 291	1 360	1 341	1 486	1 643	1 705	1 633	1 633
Miscellaneous goods and services	2 529	2 883	3 007	3 112	3 130	3 124	3 302	3 380	3 736
Net expenditure interstate	-85	119	115	115	125	139	150	154	169
<i>Total household final consumption expenditure</i>	16 586	18 379	19 132	19 538	20 400	21 475	22 617	22 920	24 294
<i>Total final consumption expenditure</i>	22 165	24 484	25 480	26 099	27 624	28 792	30 050	30 397	32 176
Gross fixed capital formation									
Private									
Dwellings	1 216	1 322	1 312	1 371	1 556	1 450	1 286	1 266	1 404
Other buildings and structures	1 221	1 157	716	580	535	528	704	887	1 330
Machinery and equipment	1 821	1 543	1 719	1 775	1 679	2 885	2 541	2 906	3 124
Livestock	85	32	20	49	53	48	75	88	106
Intangible fixed assets	218	251	200	279	273	250	260	315	347
Ownership transfer costs	312	301	293	344	363	380	311	311	363
<i>Total private gross fixed capital formation</i>	4 873	4 606	4 260	4 399	4 459	5 541	5 176	5 772	6 675
Public									
Public corporations									
Commonwealth	442	399	325	287	280	334	275	268	328
State and local	434	436	524	452	306	248	112	140	47
<i>Total public corporations gross fixed capital formation</i>	876	834	849	739	585	582	388	407	376
General government									
National	233	248	222	203	221	230	231	222	221
State and local	570	588	518	581	550	609	566	644	690
<i>Total general government gross fixed capital formation</i>	803	836	740	784	771	839	797	866	911
<i>Total public gross fixed capital formation</i>	1 679	1 670	1 590	1 523	1 356	1 421	1 185	1 274	1 286
<i>Total gross fixed capital formation</i>	6 552	6 276	5 850	5 922	5 814	6 962	6 362	7 046	7 962
State final demand	28 717	30 760	31 330	32 021	33 438	35 753	36 411	37 444	40 138
International trade—exports of goods	2 874	3 075	3 529	3 893	4 023	3 957	4 658	5 227	5 179
less International trade—imports of goods	2 044	2 186	2 389	3 057	2 789	3 103	3 090	3 370	3 871
Balancing item(a)	-885	-2 296	-2 878	-2 149	-2 418	-3 225	-2 051	-2 866	-2 480
Gross state product	28 662	29 352	29 591	30 708	32 255	33 383	35 928	36 434	38 966

(a) Calculated as the residual of GSP less state final demand less international trade in exports of goods plus international trade in imports of goods. The balancing item implicitly comprises changes in inventories, net international trade in services, total net interstate trade and statistical discrepancy (E).

	1989-90	1990-91	1991-92	1992-93	1993-94	1994-95	1995-96	1996-97	1997-98
	\$m	\$m	\$m	\$m	\$m	\$m	\$m	\$m	\$m
Final consumption expenditure									
General government									
National	1 910	2 085	2 326	2 441	2 397	2 517	2 647	2 629	2 729
State and local	4 230	4 558	4 824	4 927	5 099	5 024	5 565	5 791	6 496
<i>Total general government final consumption expenditure</i>	<i>6 139</i>	<i>6 643</i>	<i>7 150</i>	<i>7 368</i>	<i>7 497</i>	<i>7 541</i>	<i>8 212</i>	<i>8 420</i>	<i>9 225</i>
Households									
Food	2 309	2 475	2 680	2 910	3 148	3 371	3 608	3 559	3 793
Alcoholic beverages and tobacco	666	658	651	668	809	859	908	865	871
Clothing and footwear	990	954	1 023	1 136	1 209	1 282	1 329	1 287	1 240
Housing, water, electricity, gas and other fuels	3 710	4 045	4 137	4 309	4 580	4 920	5 216	5 516	5 856
Furnishings and other household equipment	1 285	1 300	1 432	1 568	1 778	1 814	1 931	1 980	2 075
Health	702	781	876	870	918	994	1 039	1 062	1 093
Transport	2 629	2 770	2 905	3 101	3 211	3 413	3 565	3 750	3 972
Communications	301	326	370	419	461	522	588	639	693
Recreation and culture	2 151	2 285	2 458	2 767	3 162	3 296	3 546	3 650	3 750
Education services	307	361	412	451	504	555	597	645	718
Hotels, cafes and restaurants	1 532	1 564	1 660	1 780	1 942	2 151	2 341	2 258	2 375
Miscellaneous goods and services	2 864	3 188	3 393	3 548	3 578	3 576	3 855	3 997	4 569
Net expenditure interstate	-59	-4	-5	-5	-5	-8	-8	-8	-8
<i>Total household final consumption expenditure</i>	<i>19 389</i>	<i>20 702</i>	<i>21 991</i>	<i>23 522</i>	<i>25 295</i>	<i>26 746</i>	<i>28 514</i>	<i>29 204</i>	<i>30 998</i>
<i>Total final consumption expenditure</i>	<i>25 528</i>	<i>27 345</i>	<i>29 141</i>	<i>30 890</i>	<i>32 792</i>	<i>34 287</i>	<i>36 726</i>	<i>37 624</i>	<i>40 223</i>
Gross fixed capital formation									
Private									
Dwellings	2 075	1 737	1 670	2 105	2 654	2 987	2 693	2 670	3 037
Other buildings and structures	1 890	1 416	1 375	1 430	1 943	1 873	2 499	2 761	5 721
Machinery and equipment	4 243	3 475	3 307	4 540	4 279	5 496	5 793	5 454	7 360
Livestock	186	48	35	92	85	106	154	167	208
Intangible fixed assets	675	761	738	850	909	1 039	1 091	1 394	1 400
Ownership transfer costs	416	418	465	557	773	709	694	750	948
<i>Total private gross fixed capital formation</i>	<i>9 485</i>	<i>7 855</i>	<i>7 590</i>	<i>9 573</i>	<i>10 643</i>	<i>12 210</i>	<i>12 923</i>	<i>13 196</i>	<i>18 673</i>
Public									
Public corporations									
Commonwealth	542	464	474	383	322	424	596	592	401
State and local	1 040	905	659	829	664	417	782	1 094	-1 044
<i>Total public corporations gross fixed capital formation</i>	<i>1 582</i>	<i>1 368</i>	<i>1 133</i>	<i>1 212</i>	<i>986</i>	<i>841</i>	<i>1 377</i>	<i>1 686</i>	<i>-644</i>
General government									
National	193	185	225	213	232	249	256	247	255
State and local	821	779	745	859	728	752	905	854	1 048
<i>Total general government gross fixed capital formation</i>	<i>1 014</i>	<i>964</i>	<i>970</i>	<i>1 072</i>	<i>960</i>	<i>1 001</i>	<i>1 161</i>	<i>1 101</i>	<i>1 303</i>
<i>Total public gross fixed capital formation</i>	<i>2 596</i>	<i>2 332</i>	<i>2 103</i>	<i>2 284</i>	<i>1 946</i>	<i>1 842</i>	<i>2 539</i>	<i>2 787</i>	<i>659</i>
<i>Total gross fixed capital formation</i>	<i>12 082</i>	<i>10 187</i>	<i>9 692</i>	<i>11 857</i>	<i>12 589</i>	<i>14 053</i>	<i>15 461</i>	<i>15 983</i>	<i>19 333</i>
State final demand									
International trade—exports of goods	37 610	37 532	38 833	42 747	45 381	48 340	52 188	53 607	59 555
less International trade—imports of goods	10 335	12 931	14 463	15 537	16 225	16 966	19 799	20 564	23 893
Balancing item(a)	3 973	3 623	3 537	4 949	4 767	5 779	6 247	6 685	8 458
	-5 774	-7 187	-8 313	-10 156	-9 844	-8 806	-10 817	-10 602	-13 409
Gross state product	38 198	39 652	41 446	43 179	46 996	50 721	54 923	56 884	61 582

(a) Calculated as the residual of GSP less state final demand less international trade in exports of goods plus international trade in imports of goods. The balancing item implicitly comprises changes in inventories, net international trade in services, total net interstate trade and statistical discrepancy (E).

	1989-90	1990-91	1991-92	1992-93	1993-94	1994-95	1995-96	1996-97	1997-98
	\$m	\$m	\$m	\$m	\$m	\$m	\$m	\$m	\$m
Final consumption expenditure									
General government									
National	598	657	706	733	746	786	827	819	848
State and local	1 303	1 461	1 446	1 511	1 555	1 608	1 693	1 785	1 741
<i>Total general government final consumption expenditure</i>	1 901	2 118	2 151	2 244	2 301	2 394	2 520	2 604	2 589
Households									
Food	675	721	749	810	877	881	949	957	997
Alcoholic beverages and tobacco	181	198	190	185	225	230	236	231	230
Clothing and footwear	264	270	275	275	290	280	286	284	292
Housing, water, electricity, gas and other fuels	902	1 010	1 093	1 170	1 227	1 267	1 334	1 404	1 480
Furnishings and other household equipment	335	358	383	397	416	438	451	466	469
Health	206	232	263	239	265	281	306	330	349
Transport	669	723	728	755	777	808	843	902	921
Communications	78	84	97	109	119	133	151	164	178
Recreation and culture	521	572	629	665	696	730	763	757	826
Education services	84	98	105	109	117	121	126	135	146
Hotels, cafes and restaurants	406	429	429	439	474	506	531	529	549
Miscellaneous goods and services	749	854	908	959	937	920	983	1 026	1 120
Net expenditure interstate	-96	-51	-49	-49	-50	-56	-62	-64	-75
<i>Total household final consumption expenditure</i>	4 976	5 498	5 797	6 059	6 369	6 540	6 893	7 118	7 477
<i>Total final consumption expenditure</i>	6 877	7 616	7 948	8 303	8 670	8 934	9 413	9 722	10 066
Gross fixed capital formation									
Private									
Dwellings	365	351	395	454	511	514	453	423	402
Other buildings and structures	237	150	272	178	149	168	224	242	206
Machinery and equipment	745	599	446	504	544	804	741	746	689
Livestock	28	13	6	20	24	17	34	39	44
Intangible fixed assets	39	40	44	53	51	56	59	73	118
Ownership transfer costs	90	86	83	88	91	99	88	69	63
<i>Total private gross fixed capital formation</i>	1 503	1 239	1 246	1 297	1 370	1 658	1 600	1 592	1 521
Public									
Public corporations									
Commonwealth	101	65	40	60	62	83	97	95	102
State and local	179	241	193	172	307	139	186	170	177
<i>Total public corporations gross fixed capital formation</i>	280	307	233	232	369	222	282	265	279
General government									
National	55	59	72	64	71	73	71	65	63
State and local	231	171	160	233	192	195	224	207	191
<i>Total general government gross fixed capital formation</i>	286	230	232	297	263	268	295	272	254
<i>Total public gross fixed capital formation</i>	566	536	465	529	632	490	578	537	532
<i>Total gross fixed capital formation</i>	2 069	1 775	1 712	1 827	2 003	2 148	2 177	2 128	2 054
State final demand	8 946	9 391	9 660	10 130	10 673	11 083	11 590	11 850	12 120
International trade—exports of goods	1 463	1 379	1 487	1 584	1 636	1 672	1 679	1 771	2 226
less International trade—imports of goods	352	298	286	333	444	345	350	392	379
Balancing item(a)	-1 900	-2 132	-2 185	-2 528	-2 705	-2 669	-2 582	-2 602	-2 862
Gross state product	8 157	8 341	8 675	8 853	9 160	9 740	10 338	10 627	11 104

(a) Calculated as the residual of GSP less state final demand less international trade in exports of goods plus international trade in imports of goods. The balancing item implicitly comprises changes in inventories, net international trade in services, total net interstate trade and statistical discrepancy (E).

	1989-90	1990-91	1991-92	1992-93	1993-94	1994-95	1995-96	1996-97	1997-98
	\$m	\$m	\$m	\$m	\$m	\$m	\$m	\$m	\$m
Final consumption expenditure									
General government									
National	429	460	513	537	624	673	706	703	727
State and local	812	925	963	1 029	1 029	1 073	1 136	1 213	1 487
<i>Total general government final consumption expenditure</i>	1 241	1 385	1 476	1 566	1 654	1 746	1 842	1 916	2 214
Households									
Food	301	333	369	391	407	463	524	495	488
Alcoholic beverages and tobacco	77	87	89	91	94	98	111	108	111
Clothing and footwear	66	74	79	85	88	100	114	101	102
Housing, water, electricity, gas and other fuels	291	324	358	378	399	426	458	498	537
Furnishings and other household equipment	99	109	112	120	128	145	159	146	165
Health	57	63	67	64	67	71	74	78	81
Transport	254	271	262	278	287	325	336	342	374
Communications	26	30	34	40	45	52	57	63	69
Recreation and culture	190	214	228	248	252	293	336	336	381
Education services	10	18	18	22	19	19	16	18	22
Hotels, cafes and restaurants	225	245	273	281	295	332	377	367	380
Miscellaneous goods and services	294	324	334	373	372	393	435	462	562
Net expenditure interstate	-91	-114	-119	-117	-130	-151	-169	-192	-193
<i>Total household final consumption expenditure</i>	1 797	1 978	2 102	2 255	2 323	2 564	2 831	2 824	3 076
<i>Total final consumption expenditure</i>	3 038	3 363	3 578	3 821	3 977	4 310	4 673	4 740	5 290
Gross fixed capital formation									
Private									
Dwellings	99	123	159	180	210	261	297	314	420
Other buildings and structures	120	96	82	114	190	167	246	263	537
Machinery and equipment	215	334	197	185	302	225	414	390	299
Livestock	27	2	-5	22	36	30	40	27	27
Intangible fixed assets	239	200	154	177	209	297	284	277	355
Ownership transfer costs	34	28	33	34	35	39	44	61	73
<i>Total private gross fixed capital formation</i>	734	783	621	712	981	1 019	1 325	1 333	1 711
Public									
Public corporations									
Commonwealth	97	115	73	50	48	61	47	47	41
State and local	91	39	32	42	41	75	32	29	33
<i>Total public corporations gross fixed capital formation</i>	188	155	105	92	89	136	79	76	74
General government									
National	39	41	40	36	37	36	39	34	27
State and local	177	180	170	149	151	203	210	247	215
<i>Total general government gross fixed capital formation</i>	216	221	210	185	188	239	249	281	242
<i>Total public gross fixed capital formation</i>	404	376	315	277	277	376	328	357	316
<i>Total gross fixed capital formation</i>	1 138	1 160	936	988	1 258	1 394	1 652	1 689	2 027
State final demand	4 177	4 523	4 514	4 809	5 235	5 704	6 326	6 430	7 317
International trade—exports of goods	1 428	1 835	1 529	1 331	1 170	1 107	1 272	1 420	1 347
less International trade—imports of goods	481	565	428	272	268	336	392	384	646
Balancing item(a)	-905	-1 139	-1 181	-1 291	-1 493	-1 508	-1 826	-1 831	-2 020
Gross state product	4 217	4 653	4 434	4 578	4 644	4 967	5 379	5 635	5 998

(a) Calculated as the residual of GSP less state final demand less international trade in exports of goods plus international trade in imports of goods. The balancing item implicitly comprises changes in inventories, net international trade in services, total net interstate trade and statistical discrepancy (E).

	1989-90	1990-91	1991-92	1992-93	1993-94	1994-95	1995-96	1996-97	1997-98
Final consumption expenditure									
General government									
National	5 284	5 939	6 195	6 448	7 516	7 944	8 354	8 327	8 668
State and local	750	944	925	985	947	968	1 015	1 068	1 094
<i>Total general government final consumption expenditure</i>	6 034	6 883	7 120	7 433	8 463	8 913	9 369	9 395	9 762
Households									
Food	386	418	468	509	561	601	642	656	690
Alcoholic beverages and tobacco	98	109	112	123	122	122	137	137	143
Clothing and footwear	202	215	236	249	252	242	258	259	259
Housing, water, electricity, gas and other fuels	815	891	984	1 084	1 132	1 161	1 177	1 198	1 252
Furnishings and other household equipment	234	259	284	301	303	314	308	326	347
Health	140	149	160	162	163	162	168	176	185
Transport	519	563	567	576	612	645	660	671	726
Communications	66	69	76	87	94	101	115	124	134
Recreation and culture	420	476	543	604	668	687	701	717	766
Education services	94	103	113	122	133	132	139	153	170
Hotels, cafes and restaurants	242	255	267	277	293	310	336	344	376
Miscellaneous goods and services	513	633	687	726	755	762	807	865	993
Net expenditure interstate	4	59	61	65	83	96	98	106	109
<i>Total household final consumption expenditure</i>	3 734	4 198	4 553	4 886	5 165	5 335	5 548	5 733	6 150
<i>Total final consumption expenditure</i>	9 768	11 081	11 673	12 319	13 628	14 248	14 917	15 128	15 912
Gross fixed capital formation									
Private									
Dwellings	293	320	464	529	550	490	372	347	318
Other buildings and structures	294	206	240	231	204	201	184	213	531
Machinery and equipment	191	172	295	285	330	120	220	226	360
Livestock	—	—	—	—	—	—	—	—	—
Intangible fixed assets	70	79	80	97	103	104	105	123	130
Ownership transfer costs	74	79	101	113	104	101	78	77	82
<i>Total private gross fixed capital formation</i>	922	856	1 179	1 254	1 290	1 016	959	984	1 421
Public									
Public corporations									
Commonwealth	80	71	67	64	53	70	82	81	77
State and local	84	89	59	73	68	79	78	59	56
<i>Total public corporations gross fixed capital formation</i>	165	159	126	137	121	149	160	140	133
General government									
National	396	427	487	404	461	357	350	267	-125
State and local	158	164	146	179	141	152	94	122	134
<i>Total general government gross fixed capital formation</i>	554	591	633	583	602	509	444	389	9
<i>Total public gross fixed capital formation</i>	719	750	760	720	723	658	604	529	141
<i>Total gross fixed capital formation</i>	1 641	1 607	1 938	1 974	2 014	1 674	1 563	1 513	1 562
State final demand	11 409	12 687	13 611	14 294	15 642	15 921	16 480	16 641	17 474
International trade—exports of goods	9	7	11	8	14	19	17	9	13
less International trade—imports of goods	29	28	26	19	22	17	9	12	10
Balancing item(a)	-4 098	-4 779	-5 262	-5 456	-6 135	-6 029	-6 068	-5 766	-6 000
Gross state product	7 291	7 888	8 335	8 827	9 499	9 894	10 419	10 873	11 477

(a) Calculated as the residual of GSP less state final demand less international trade in exports of goods plus international trade in imports of goods. The balancing item implicitly comprises changes in inventories, net international trade in services, total net interstate trade and statistical discrepancy (E).

	1989-90	1990-91	1991-92	1992-93	1993-94	1994-95	1995-96	1996-97	1997-98
	\$m	\$m	\$m	\$m	\$m	\$m	\$m	\$m	\$m
Final consumption expenditure									
General government									
National	28 691	31 096	33 309	34 941	36 330	37 752	39 543	39 373	41 047
State and local	41 038	44 746	47 899	49 850	50 339	51 938	55 657	58 437	62 534
<i>Total general government final consumption expenditure</i>	69 729	75 842	81 208	84 791	86 669	89 690	95 200	97 810	103 581
Households									
Food	25 926	27 157	28 444	29 690	31 253	33 916	37 106	38 332	40 265
Alcoholic beverages and tobacco	6 900	7 431	7 562	8 133	8 605	8 953	9 807	9 795	10 008
Clothing and footwear	11 089	11 206	11 779	11 942	12 071	12 516	12 843	12 535	13 055
Housing, water, electricity, gas and other fuels	44 932	48 856	51 428	53 692	56 056	58 851	62 186	65 427	68 948
Furnishings and other household equipment	13 941	14 092	15 038	15 571	16 370	17 338	18 012	18 197	18 964
Health	8 151	9 153	9 986	10 252	10 776	11 221	11 667	11 972	12 231
Transport	28 433	29 960	30 365	31 869	32 896	35 623	37 208	38 890	41 169
Communications	3 225	3 468	3 968	4 480	4 943	5 463	6 193	6 720	7 299
Recreation and culture	22 902	24 156	25 797	27 337	29 263	32 101	35 013	36 438	38 654
Education services	3 857	4 296	4 708	5 006	5 341	5 679	6 109	6 631	7 292
Hotels, cafes and restaurants	17 291	18 118	18 880	19 532	20 769	22 878	24 828	25 147	26 480
Miscellaneous goods and services	30 428	34 345	36 041	37 562	37 609	37 856	40 599	42 851	47 946
<i>Total household final consumption expenditure</i>	217 075	232 238	243 996	255 066	265 952	282 395	301 571	312 935	332 311
<i>Total final consumption expenditure</i>	286 804	308 080	325 204	339 857	352 621	372 085	396 771	410 745	435 892
Gross fixed capital formation									
Private									
Dwellings	18 904	17 484	17 936	20 878	23 893	25 626	23 620	24 372	28 482
Other buildings and structures	17 892	15 372	12 085	10 908	11 399	12 545	15 755	18 999	22 737
Machinery and equipment	27 252	24 252	23 256	27 710	30 542	36 937	38 314	41 677	44 430
Livestock	1 085	343	208	657	765	711	1 119	1 112	1 271
Intangible fixed assets	3 786	3 959	3 949	4 789	5 090	5 407	5 531	6 456	6 757
Ownership transfer costs	5 164	4 540	4 666	4 908	5 787	5 568	5 483	6 114	7 338
<i>Total private gross fixed capital formation</i>	74 083	65 950	62 100	69 850	77 476	86 794	89 822	98 730	111 015
Public									
Public corporations									
Commonwealth	5 801	5 227	5 013	4 320	3 667	4 737	4 938	4 892	4 319
State and local	7 843	7 505	7 368	6 766	6 679	7 466	6 584	4 935	4 272
<i>Total public corporations gross fixed capital formation</i>	13 644	12 732	12 381	11 086	10 346	12 202	11 522	9 826	8 591
General government									
National	2 999	2 942	3 157	3 016	3 362	3 333	3 343	3 158	2 643
State and local	7 191	7 368	7 208	8 091	7 757	8 323	8 112	9 177	9 681
<i>Total general government gross fixed capital formation</i>	10 190	10 310	10 365	11 107	11 119	11 656	11 455	12 335	12 324
<i>Total public gross fixed capital formation</i>	23 834	23 042	22 746	22 193	21 465	23 858	22 977	22 161	20 915
<i>Total gross fixed capital formation</i>	97 917	88 992	84 846	92 043	98 941	110 652	112 799	120 891	131 930
Domestic final demand	384 720	397 071	410 051	431 901	451 563	482 738	509 573	531 635	567 821
International trade—exports of goods	48 270	51 461	54 109	59 754	63 689	66 111	75 021	78 139	87 011
less International trade—imports of goods	51 179	48 741	50 821	59 366	64 143	74 122	77 317	78 172	89 115
Balancing item(a)	1 680	-3 555	-7 407	-5 308	-1 660	-79	1 529	604	-1 012
Gross domestic product	383 494	396 236	405 931	426 982	449 448	474 646	508 806	532 204	564 705

(a) Calculated as the residual of GDP less domestic final demand less international trade in exports of goods plus international trade in imports of goods. The balancing item implicitly comprises changes in inventories, net international trade in services and statistical discrepancy (E).

	1989-90	1990-91	1991-92	1992-93	1993-94	1994-95	1995-96	1996-97	1997-98
	\$m	\$m	\$m	\$m	\$m	\$m	\$m	\$m	\$m
NEW SOUTH WALES									
Compensation of employees	65 746	69 337	71 049	71 942	75 349	80 463	86 661	92 800	97 083
Gross operating surplus	40 408	42 687	44 952	47 263	49 008	51 543	54 877	57 561	61 873
Gross mixed income	13 161	12 858	11 780	13 760	14 531	14 392	15 385	15 766	16 119
Total factor income	119 315	124 882	127 781	132 965	138 888	146 398	156 923	166 127	175 075
Taxes less subsidies on production and imports	16 013	15 864	16 056	16 315	17 845	19 790	21 739	22 925	24 533
Statistical discrepancy (I)	-273	271	775	1 066	666	—	—	—	552
Gross state product at market prices	135 055	141 017	144 612	150 346	157 399	166 188	178 662	189 052	200 160
VICTORIA									
Compensation of employees	50 706	52 043	50 984	53 581	55 250	58 541	61 917	65 608	68 531
Gross operating surplus	28 959	30 547	31 291	35 165	37 421	37 869	39 988	40 274	43 562
Gross mixed income	12 316	11 468	12 010	11 542	11 483	11 430	12 515	12 521	13 117
Total factor income	91 981	94 058	94 285	100 288	104 154	107 840	114 420	118 403	125 210
Taxes less subsidies on production and imports	12 655	12 486	11 820	12 179	13 878	15 481	16 782	17 895	18 079
Statistical discrepancy (I)	-210	204	573	803	502	—	—	—	397
Gross state product at market prices	104 426	106 748	106 678	113 270	118 534	123 321	131 202	136 298	143 686
QUEENSLAND									
Compensation of employees	26 658	27 651	29 421	31 697	32 807	36 247	39 101	42 869	44 639
Gross operating surplus	17 134	17 604	19 266	20 211	21 517	22 164	24 248	24 439	26 987
Gross mixed income	7 629	6 932	6 659	7 990	8 516	9 341	9 632	9 992	10 265
Total factor income	51 421	52 187	55 346	59 898	62 840	67 752	72 981	77 300	81 891
Taxes less subsidies on production and imports	6 182	6 286	6 480	6 846	7 821	8 680	8 973	9 100	9 588
Statistical discrepancy (I)	-116	112	334	477	301	—	—	—	253
Gross state product at market prices	57 487	58 585	62 160	67 221	70 962	76 432	81 954	86 400	91 732
SOUTH AUSTRALIA									
Compensation of employees	14 020	14 770	14 660	15 131	16 145	16 587	17 518	18 140	18 902
Gross operating surplus	7 633	7 935	8 123	8 736	8 909	9 217	9 723	9 898	10 857
Gross mixed income	4 183	3 540	3 685	3 528	3 718	3 919	4 672	4 366	4 823
Total factor income	25 836	26 245	26 468	27 395	28 772	29 723	31 913	32 404	34 582
Taxes less subsidies on production and imports	2 884	3 051	2 964	3 095	3 346	3 660	4 015	4 030	4 276
Statistical discrepancy (I)	-58	56	159	218	137	—	—	—	108
Gross state product at market prices	28 662	29 352	29 591	30 708	32 255	33 383	35 928	36 434	38 966
WESTERN AUSTRALIA									
Compensation of employees	16 676	17 144	18 017	18 402	20 095	21 569	22 749	24 248	25 242
Gross operating surplus	12 487	14 261	14 886	15 352	17 253	18 677	19 889	19 768	22 249
Gross mixed income	5 011	4 032	4 341	4 964	4 728	5 327	6 734	7 217	7 690
Total factor income	34 174	35 437	37 244	38 718	42 076	45 573	49 372	51 233	55 181
Taxes less subsidies on production and imports	4 101	4 139	3 980	4 155	4 721	5 148	5 551	5 651	6 231
Statistical discrepancy (I)	-77	76	222	306	199	—	—	—	170
Gross state product at market prices	38 198	39 652	41 446	43 179	46 996	50 721	54 923	56 884	61 582
TASMANIA									
Compensation of employees	4 125	4 383	4 421	4 458	4 444	4 784	5 061	5 207	5 335
Gross operating surplus	2 192	2 107	2 345	2 517	2 745	2 918	3 102	3 255	3 514
Gross mixed income	1 149	1 096	1 087	1 017	1 060	1 101	1 177	1 170	1 227
Total factor income	7 466	7 586	7 853	7 992	8 249	8 803	9 340	9 632	10 076
Taxes less subsidies on production and imports	707	739	775	798	872	937	998	995	997
Statistical discrepancy (I)	-16	16	47	63	39	—	—	—	31
Gross state product at market prices	8 157	8 341	8 675	8 853	9 160	9 740	10 338	10 627	11 104

	1989-90	1990-91	1991-92	1992-93	1993-94	1994-95	1995-96	1996-97	1997-98
	\$m	\$m	\$m	\$m	\$m	\$m	\$m	\$m	\$m
NORTHERN TERRITORY									
Compensation of employees	1 958	1 989	2 102	2 039	2 210	2 507	2 649	2 888	3 047
Gross operating surplus	1 669	2 064	1 844	2 035	1 791	1 772	1 915	1 924	2 094
Gross mixed income	306	260	299	252	327	334	400	456	411
Total factor income	3 933	4 313	4 245	4 326	4 328	4 613	4 964	5 268	5 552
Taxes less subsidies on production and imports	292	331	165	220	296	354	415	367	429
Statistical discrepancy (I)	-8	9	24	32	20	—	—	—	17
Gross state product at market prices	4 217	4 653	4 434	4 578	4 644	4 967	5 379	5 635	5 998
AUSTRALIAN CAPITAL TERRITORY									
Compensation of employees	4 626	4 983	5 120	5 406	5 831	6 206	6 575	6 999	7 305
Gross operating surplus	1 748	1 843	2 130	2 215	2 387	2 294	2 471	2 552	2 742
Gross mixed income	483	586	530	571	596	695	643	536	565
Total factor income	6 857	7 412	7 780	8 192	8 814	9 195	9 689	10 087	10 612
Taxes less subsidies on production and imports	449	461	510	572	645	699	730	786	833
Statistical discrepancy (I)	-15	15	45	63	40	—	—	—	32
Gross state product at market prices	7 291	7 888	8 335	8 827	9 499	9 894	10 419	10 873	11 477
AUSTRALIA									
Compensation of employees	184 515	192 300	195 774	202 656	212 131	226 904	242 231	258 759	270 084
Gross operating surplus	112 231	119 048	124 837	133 494	141 030	146 455	156 214	159 672	173 878
Gross mixed income	44 238	40 772	40 391	43 624	44 959	46 539	51 158	52 024	54 217
Total factor income	340 984	352 120	361 002	379 774	398 120	419 897	449 603	470 455	498 179
Taxes less subsidies on production and imports	43 283	43 357	42 750	44 180	49 424	54 749	59 203	61 749	64 966
Statistical discrepancy (I)	-773	759	2 179	3 028	1 904	—	—	—	1 560
Gross domestic product at market prices	383 494	396 236	405 931	426 982	449 448	474 646	508 806	532 204	564 705

	1989-90	1990-91	1991-92	1992-93	1993-94	1994-95	1995-96	1996-97	1997-98
	\$m	\$m	\$m	\$m	\$m	\$m	\$m	\$m	\$m
Agriculture, forestry and fishing									
Compensation of employees	1 031	987	960	1 069	1 120	1 254	1 332	1 198	1 247
Gross operating surplus and gross mixed income	3 647	2 578	1 799	2 249	2 593	1 690	2 636	3 465	3 210
<i>Total</i>	4 678	3 565	2 759	3 318	3 713	2 944	3 968	4 663	4 457
Mining									
Compensation of employees	1 401	1 573	1 414	1 382	1 389	1 350	1 580	1 658	1 923
Gross operating surplus and gross mixed income	1 336	1 103	1 123	1 006	1 233	1 413	1 494	1 501	1 511
<i>Total</i>	2 737	2 676	2 537	2 388	2 622	2 763	3 074	3 159	3 434
Manufacturing									
Compensation of employees	10 371	10 525	10 414	10 615	11 144	11 627	12 539	12 889	13 412
Gross operating surplus and gross mixed income	6 471	6 237	6 879	7 830	8 825	9 279	9 451	9 083	9 979
<i>Total</i>	16 842	16 762	17 293	18 445	19 969	20 906	21 990	21 972	23 391
Electricity, gas and water									
Compensation of employees	1 496	1 579	1 692	1 609	1 507	1 450	1 463	1 421	1 343
Gross operating surplus and gross mixed income	2 375	2 609	2 930	3 103	3 152	3 028	2 973	2 936	3 032
<i>Total</i>	3 871	4 188	4 622	4 712	4 659	4 478	4 436	4 357	4 375
Construction									
Compensation of employees	3 848	3 974	3 463	3 478	3 943	4 576	4 597	4 659	4 937
Gross operating surplus and gross mixed income	3 516	3 515	3 420	3 125	3 354	3 850	4 154	4 347	5 034
<i>Total</i>	7 364	7 489	6 883	6 603	7 297	8 426	8 751	9 006	9 971
Wholesale trade									
Compensation of employees	5 141	5 696	6 008	6 232	6 455	6 364	6 730	7 047	7 373
Gross operating surplus and gross mixed income	2 586	2 824	2 850	2 844	3 049	3 084	3 155	3 187	3 038
<i>Total</i>	7 727	8 520	8 858	9 076	9 504	9 448	9 885	10 234	10 411
Retail trade									
Compensation of employees	4 755	4 916	4 948	5 121	5 573	5 826	6 308	6 464	6 976
Gross operating surplus and gross mixed income	2 271	2 176	2 258	2 315	2 457	2 571	2 592	2 633	2 720
<i>Total</i>	7 026	7 092	7 206	7 436	8 030	8 397	8 900	9 097	9 696
Accommodation, cafes and restaurants									
Compensation of employees	1 745	1 972	2 059	2 054	2 188	2 515	2 616	2 812	3 067
Gross operating surplus and gross mixed income	1 065	1 149	1 007	983	1 011	1 193	1 435	1 407	1 544
<i>Total</i>	2 810	3 121	3 066	3 037	3 199	3 708	4 051	4 219	4 611
Transport and storage									
Compensation of employees	4 528	4 688	4 851	4 605	5 003	5 572	5 559	5 949	6 093
Gross operating surplus and gross mixed income	2 332	2 320	2 432	2 564	2 657	2 816	2 919	4 079	4 106
<i>Total</i>	6 860	7 008	7 283	7 169	7 660	8 388	8 478	10 028	10 199
Communication services									
Compensation of employees	1 840	1 919	2 030	2 082	2 023	2 182	2 505	2 685	2 708
Gross operating surplus and gross mixed income	1 438	1 664	1 866	1 892	1 863	2 060	2 311	2 289	2 855
<i>Total</i>	3 278	3 583	3 896	3 974	3 886	4 242	4 816	4 974	5 563
Finance and insurance									
Compensation of employees	5 222	5 522	5 596	5 453	5 490	5 936	6 589	7 065	7 461
Gross operating surplus and gross mixed income	2 591	4 227	4 279	5 768	5 487	4 973	5 059	4 649	4 924
<i>Total</i>	7 813	9 749	9 875	11 221	10 977	10 909	11 648	11 714	12 385
Property and business services									
Compensation of employees	7 391	7 651	8 009	8 381	8 988	10 364	11 604	13 397	13 497
Gross operating surplus and gross mixed income	6 415	6 438	6 496	6 986	6 779	7 610	8 048	8 060	8 723
<i>Total</i>	13 806	14 089	14 505	15 367	15 767	17 974	19 652	21 457	22 220
Government administration and defence									
Compensation of employees	3 552	3 687	4 003	4 260	4 483	4 660	5 206	6 109	6 171
<i>Total</i>	3 552	3 687	4 003	4 260	4 483	4 660	5 206	6 109	6 171
Education									
Compensation of employees	4 777	5 138	5 408	5 751	6 101	6 324	6 469	6 931	7 369
Gross operating surplus and gross mixed income	46	60	67	73	81	95	108	125	139
<i>Total</i>	4 823	5 198	5 475	5 824	6 182	6 419	6 577	7 056	7 508

	1989-90	1990-91	1991-92	1992-93	1993-94	1994-95	1995-96	1996-97	1997-98
	\$m	\$m	\$m	\$m	\$m	\$m	\$m	\$m	\$m
Health and community services									
Compensation of employees	5 331	6 111	6 531	6 347	6 260	6 471	7 190	7 868	8 587
Gross operating surplus and gross mixed income	819	919	953	1 038	1 125	1 224	1 246	1 246	1 295
<i>Total</i>	6 150	7 030	7 484	7 385	7 385	7 695	8 436	9 114	9 882
Cultural and recreational services									
Compensation of employees	1 179	1 157	1 225	1 088	1 147	1 379	1 609	1 855	2 112
Gross operating surplus and gross mixed income	991	936	914	1 163	1 206	1 256	1 225	1 241	1 478
<i>Total</i>	2 170	2 093	2 139	2 251	2 353	2 635	2 834	3 096	3 590
Personal and other services									
Compensation of employees	2 138	2 242	2 438	2 415	2 535	2 613	2 765	2 793	2 807
Gross operating surplus and gross mixed income	309	351	376	432	375	501	680	757	816
<i>Total</i>	2 447	2 593	2 814	2 847	2 910	3 114	3 445	3 550	3 623
Ownership of dwellings									
Gross operating surplus	12 777	13 656	14 160	14 579	15 178	16 006	17 377	18 840	19 869
General government									
Gross operating surplus(a)	2 584	2 783	2 923	3 073	3 114	3 286	3 399	3 482	3 719
All industries									
Compensation of employees	65 746	69 337	71 049	71 942	75 349	80 463	86 661	92 800	97 083
Gross operating surplus and gross mixed income	53 569	55 545	56 732	61 023	63 539	65 935	70 262	73 327	77 992
Total	119 315	124 882	127 781	132 965	138 888	146 398	156 923	166 127	175 075

(a) State details for general government gross operating surplus by industry are not available.

	1989-90	1990-91	1991-92	1992-93	1993-94	1994-95	1995-96	1996-97	1997-98
	\$m	\$m	\$m	\$m	\$m	\$m	\$m	\$m	\$m
Agriculture, forestry and fishing									
Compensation of employees	546	510	470	480	534	566	569	637	658
Gross operating surplus and gross mixed income	2 802	2 118	2 302	2 720	3 058	2 293	3 367	3 037	3 166
<i>Total</i>	3 348	2 628	2 772	3 200	3 592	2 859	3 936	3 674	3 824
Mining									
Compensation of employees	380	396	370	338	325	339	348	324	405
Gross operating surplus and gross mixed income	2 801	3 580	3 350	3 641	3 356	2 985	2 840	2 546	2 796
<i>Total</i>	3 181	3 976	3 720	3 979	3 681	3 324	3 188	2 870	3 201
Manufacturing									
Compensation of employees	10 324	9 948	9 557	10 016	9 966	10 486	11 069	11 670	12 337
Gross operating surplus and gross mixed income	6 269	5 797	6 121	6 953	7 830	8 263	8 620	8 066	8 860
<i>Total</i>	16 593	15 745	15 678	16 969	17 796	18 749	19 689	19 736	21 197
Electricity, gas and water									
Compensation of employees	1 534	1 472	1 394	1 348	1 199	1 039	977	902	855
Gross operating surplus and gross mixed income	2 027	1 946	2 154	2 285	2 442	2 500	2 485	2 688	2 662
<i>Total</i>	3 561	3 418	3 548	3 633	3 641	3 539	3 462	3 590	3 517
Construction									
Compensation of employees	2 775	2 834	2 344	2 420	2 393	2 522	2 549	2 615	3 114
Gross operating surplus and gross mixed income	2 982	2 455	2 147	2 015	2 170	2 522	2 585	2 611	3 024
<i>Total</i>	5 757	5 289	4 491	4 435	4 563	5 044	5 134	5 226	6 138
Wholesale trade									
Compensation of employees	4 234	4 118	3 645	3 693	4 051	4 364	4 555	4 762	5 174
Gross operating surplus and gross mixed income	2 226	2 363	2 380	2 418	2 634	2 540	2 499	2 596	2 416
<i>Total</i>	6 460	6 481	6 025	6 111	6 685	6 904	7 054	7 358	7 590
Retail trade									
Compensation of employees	3 461	3 458	3 359	3 737	3 853	3 946	4 519	4 945	4 870
Gross operating surplus and gross mixed income	1 783	1 632	1 659	1 730	1 864	1 860	1 804	1 885	1 901
<i>Total</i>	5 244	5 090	5 018	5 467	5 717	5 806	6 323	6 830	6 771
Accommodation, cafes and restaurants									
Compensation of employees	757	777	902	1 065	1 121	1 245	1 292	1 342	1 463
Gross operating surplus and gross mixed income	505	545	478	450	441	495	595	583	640
<i>Total</i>	1 262	1 322	1 380	1 515	1 562	1 740	1 887	1 925	2 103
Transport and storage									
Compensation of employees	2 787	2 838	2 959	3 053	3 207	3 444	3 622	3 805	3 866
Gross operating surplus and gross mixed income	1 680	1 582	1 507	1 668	1 702	1 782	2 214	2 505	2 707
<i>Total</i>	4 467	4 420	4 466	4 721	4 909	5 226	5 836	6 310	6 573
Communication services									
Compensation of employees	1 477	1 625	1 619	1 761	1 796	1 912	2 089	2 122	2 057
Gross operating surplus and gross mixed income	1 010	1 145	1 452	1 448	1 675	1 766	1 899	1 896	2 373
<i>Total</i>	2 487	2 770	3 071	3 209	3 471	3 678	3 988	4 018	4 430
Finance and insurance									
Compensation of employees	3 247	3 164	3 171	3 043	3 502	3 670	4 214	4 538	4 826
Gross operating surplus and gross mixed income	1 525	2 344	3 022	4 238	4 369	3 757	3 660	3 431	3 725
<i>Total</i>	4 772	5 508	6 193	7 281	7 871	7 427	7 874	7 969	8 551
Property and business services									
Compensation of employees	5 399	5 756	5 166	5 452	5 867	6 891	7 593	8 440	8 337
Gross operating surplus and gross mixed income	4 329	4 223	4 150	4 334	4 227	4 897	5 310	5 318	5 756
<i>Total</i>	9 728	9 979	9 316	9 786	10 094	11 788	12 903	13 758	14 093
Government administration and defence									
Compensation of employees	3 164	3 405	3 539	3 565	3 639	3 766	3 644	3 944	3 982
<i>Total</i>	3 164	3 405	3 539	3 565	3 639	3 766	3 644	3 944	3 982
Education									
Compensation of employees	4 153	4 469	4 667	5 172	5 293	5 463	5 429	5 593	5 969
Gross operating surplus and gross mixed income	43	49	58	65	71	82	91	107	116
<i>Total</i>	4 196	4 518	4 725	5 237	5 364	5 545	5 520	5 700	6 085

	1989-90	1990-91	1991-92	1992-93	1993-94	1994-95	1995-96	1996-97	1997-98
	\$m	\$m	\$m	\$m	\$m	\$m	\$m	\$m	\$m
Health and community services									
Compensation of employees	4 569	5 173	5 447	5 839	5 938	6 024	6 300	6 654	7 112
Gross operating surplus and gross mixed income	619	706	739	888	955	1 026	1 060	1 068	1 124
<i>Total</i>	5 188	5 879	6 186	6 727	6 893	7 050	7 360	7 722	8 236
Cultural and recreational services									
Compensation of employees	541	615	762	850	878	1 043	1 230	1 325	1 493
Gross operating surplus and gross mixed income	636	591	659	756	898	858	931	904	1 032
<i>Total</i>	1 177	1 206	1 421	1 606	1 776	1 901	2 161	2 229	2 525
Personal and other services									
Compensation of employees	1 358	1 485	1 613	1 749	1 688	1 821	1 918	1 990	2 013
Gross operating surplus and gross mixed income	264	294	338	390	336	454	602	667	738
<i>Total</i>	1 622	1 779	1 951	2 139	2 024	2 275	2 520	2 657	2 751
Ownership of dwellings									
Gross operating surplus	7 899	8 608	8 656	8 519	8 558	8 881	9 496	10 415	11 093
General government									
Gross operating surplus(a)	1 875	2 037	2 129	2 189	2 318	2 338	2 445	2 472	2 550
All industries									
Compensation of employees	50 706	52 043	50 984	53 581	55 250	58 541	61 917	65 608	68 531
Gross operating surplus and gross mixed income	41 275	42 015	43 301	46 707	48 904	49 299	52 503	52 795	56 679
Total	91 981	94 058	94 285	100 288	104 154	107 840	114 420	118 403	125 210

(a) State details for general government gross operating surplus by industry are not available.

	1989-90	1990-91	1991-92	1992-93	1993-94	1994-95	1995-96	1996-97	1997-98
	\$m	\$m	\$m	\$m	\$m	\$m	\$m	\$m	\$m
Agriculture, forestry and fishing									
Compensation of employees	750	738	676	625	666	749	774	904	906
Gross operating surplus and gross mixed income	2 524	2 038	1 874	2 186	2 604	2 273	2 272	2 114	2 016
<i>Total</i>	3 274	2 776	2 550	2 811	3 270	3 022	3 046	3 018	2 922
Mining									
Compensation of employees	1 182	1 205	1 215	1 336	1 273	1 229	1 500	1 649	1 715
Gross operating surplus and gross mixed income	2 380	2 190	2 129	2 846	2 460	2 377	2 755	2 824	3 246
<i>Total</i>	3 562	3 395	3 344	4 182	3 733	3 606	4 255	4 473	4 961
Manufacturing									
Compensation of employees	3 411	3 510	3 723	4 011	4 334	4 897	5 228	5 536	5 682
Gross operating surplus and gross mixed income	2 546	2 210	2 261	2 416	2 902	2 881	3 003	2 805	3 081
<i>Total</i>	5 957	5 720	5 984	6 427	7 236	7 778	8 231	8 341	8 763
Electricity, gas and water									
Compensation of employees	488	503	490	484	479	482	544	602	566
Gross operating surplus and gross mixed income	1 322	1 372	1 452	1 551	1 635	1 645	1 950	1 617	1 894
<i>Total</i>	1 810	1 875	1 942	2 035	2 114	2 127	2 494	2 219	2 460
Construction									
Compensation of employees	2 161	2 009	1 878	1 956	1 947	2 105	2 195	2 372	2 460
Gross operating surplus and gross mixed income	1 808	1 574	1 899	2 041	2 268	2 496	2 527	2 688	3 113
<i>Total</i>	3 969	3 583	3 777	3 997	4 215	4 601	4 722	5 060	5 573
Wholesale trade									
Compensation of employees	2 076	2 137	2 081	2 093	2 161	2 495	2 455	2 759	2 977
Gross operating surplus and gross mixed income	1 132	1 233	1 264	1 329	1 451	1 520	1 492	1 517	1 484
<i>Total</i>	3 208	3 370	3 345	3 422	3 612	4 015	3 947	4 276	4 461
Retail trade									
Compensation of employees	2 323	2 623	2 791	2 953	2 909	3 195	3 616	4 060	4 063
Gross operating surplus and gross mixed income	1 218	1 173	1 246	1 349	1 456	1 577	1 524	1 558	1 656
<i>Total</i>	3 541	3 796	4 037	4 302	4 365	4 772	5 140	5 618	5 719
Accommodation, cafes and restaurants									
Compensation of employees	847	909	1 092	1 127	1 226	1 441	1 475	1 662	1 807
Gross operating surplus and gross mixed income	521	562	493	483	499	593	713	698	766
<i>Total</i>	1 368	1 471	1 585	1 610	1 725	2 034	2 188	2 360	2 573
Transport and storage									
Compensation of employees	2 057	2 027	2 018	2 052	2 060	2 405	2 527	2 724	2 703
Gross operating surplus and gross mixed income	1 429	1 404	1 533	1 702	2 108	2 347	2 951	3 317	3 299
<i>Total</i>	3 486	3 431	3 551	3 754	4 168	4 752	5 478	6 041	6 002
Communication services									
Compensation of employees	726	749	752	856	852	933	1 005	1 061	1 072
Gross operating surplus and gross mixed income	607	689	882	916	952	1 106	1 163	1 140	1 418
<i>Total</i>	1 333	1 438	1 634	1 772	1 804	2 039	2 168	2 201	2 490
Finance and insurance									
Compensation of employees	1 211	1 297	1 329	1 400	1 464	1 619	1 795	2 010	1 981
Gross operating surplus and gross mixed income	460	624	857	584	597	843	963	964	1 387
<i>Total</i>	1 671	1 921	2 186	1 984	2 061	2 462	2 758	2 974	3 368
Property and business services									
Compensation of employees	2 411	2 270	2 659	3 042	3 011	3 513	3 756	4 158	4 168
Gross operating surplus and gross mixed income	2 277	2 310	2 347	2 549	2 308	2 458	2 518	2 522	2 730
<i>Total</i>	4 688	4 580	5 006	5 591	5 319	5 971	6 274	6 680	6 898
Government administration and defence									
Compensation of employees	1 613	1 727	2 091	2 399	2 632	2 812	3 104	3 455	3 708
<i>Total</i>	1 613	1 727	2 091	2 399	2 632	2 812	3 104	3 455	3 708
Education									
Compensation of employees	2 094	2 222	2 482	2 921	3 048	3 184	3 457	3 681	3 938
Gross operating surplus and gross mixed income	20	28	32	35	41	49	55	66	71
<i>Total</i>	2 114	2 250	2 514	2 956	3 089	3 233	3 512	3 747	4 009

	1989-90	1990-91	1991-92	1992-93	1993-94	1994-95	1995-96	1996-97	1997-98
	\$m	\$m	\$m	\$m	\$m	\$m	\$m	\$m	\$m
Health and community services									
Compensation of employees	2 314	2 621	2 796	2 961	3 249	3 400	3 654	4 064	4 534
Gross operating surplus and gross mixed income	343	400	421	489	544	594	627	642	685
<i>Total</i>	2 657	3 021	3 217	3 450	3 793	3 994	4 281	4 706	5 219
Cultural and recreational services									
Compensation of employees	271	341	430	449	442	502	639	709	736
Gross operating surplus and gross mixed income	400	347	356	479	538	528	574	575	658
<i>Total</i>	671	688	786	928	980	1 030	1 213	1 284	1 394
Personal and other services									
Compensation of employees	723	763	918	1 032	1 054	1 286	1 377	1 463	1 623
Gross operating surplus and gross mixed income	145	169	185	212	197	250	328	388	418
<i>Total</i>	868	932	1 103	1 244	1 251	1 536	1 705	1 851	2 041
Ownership of dwellings									
Gross operating surplus	4 336	4 800	5 142	5 421	5 788	6 187	6 580	7 071	7 355
General government									
Gross operating surplus(a)	1 295	1 413	1 552	1 613	1 685	1 781	1 885	1 925	1 975
All industries									
Compensation of employees	26 658	27 651	29 421	31 697	32 807	36 247	39 101	42 869	44 639
Gross operating surplus and gross mixed income	24 763	24 536	25 925	28 201	30 033	31 505	33 880	34 431	37 252
Total	51 421	52 187	55 346	59 898	62 840	67 752	72 981	77 300	81 891

(a) State details for general government gross operating surplus by industry are not available.

	1989-90	1990-91	1991-92	1992-93	1993-94	1994-95	1995-96	1996-97	1997-98
	\$m	\$m	\$m	\$m	\$m	\$m	\$m	\$m	\$m
Agriculture, forestry and fishing									
Compensation of employees	276	256	234	246	263	278	293	321	333
Gross operating surplus and gross mixed income	1 390	638	848	962	1 086	994	1 688	1 425	1 769
<i>Total</i>	1 666	894	1 082	1 208	1 349	1 272	1 981	1 746	2 102
Mining									
Compensation of employees	185	181	143	147	147	156	189	197	208
Gross operating surplus and gross mixed income	559	632	613	744	659	657	782	577	726
<i>Total</i>	744	813	756	891	806	813	971	774	934
Manufacturing									
Compensation of employees	2 642	2 679	2 654	2 766	2 803	2 842	3 069	3 178	3 210
Gross operating surplus and gross mixed income	2 122	1 862	1 850	1 835	2 165	2 190	2 243	2 130	2 339
<i>Total</i>	4 764	4 541	4 504	4 601	4 968	5 032	5 312	5 308	5 549
Electricity, gas and water									
Compensation of employees	331	361	348	339	310	305	295	290	316
Gross operating surplus and gross mixed income	469	464	478	585	413	547	588	812	804
<i>Total</i>	800	825	826	924	723	852	883	1 102	1 120
Construction									
Compensation of employees	861	927	753	710	764	816	847	858	953
Gross operating surplus and gross mixed income	759	751	700	622	636	728	723	742	859
<i>Total</i>	1 620	1 678	1 453	1 332	1 400	1 544	1 570	1 600	1 812
Wholesale trade									
Compensation of employees	935	1 027	984	1 061	1 066	1 039	1 094	1 080	1 213
Gross operating surplus and gross mixed income	422	473	462	447	493	493	493	487	472
<i>Total</i>	1 357	1 500	1 446	1 508	1 559	1 532	1 587	1 567	1 685
Retail trade									
Compensation of employees	1 005	995	1 037	1 048	1 081	1 165	1 249	1 329	1 444
Gross operating surplus and gross mixed income	612	615	631	629	685	709	697	692	729
<i>Total</i>	1 617	1 610	1 668	1 677	1 766	1 874	1 946	2 021	2 173
Accommodation, cafes and restaurants									
Compensation of employees	322	315	310	352	352	374	399	414	463
Gross operating surplus and gross mixed income	169	183	160	158	164	196	235	231	253
<i>Total</i>	491	498	470	510	516	570	634	645	716
Transport and storage									
Compensation of employees	777	821	1 003	1 029	1 022	1 014	1 040	1 023	915
Gross operating surplus and gross mixed income	569	535	540	674	763	827	1 000	1 123	1 099
<i>Total</i>	1 346	1 356	1 543	1 703	1 785	1 841	2 040	2 146	2 014
Communication services									
Compensation of employees	358	396	394	369	420	419	436	476	500
Gross operating surplus and gross mixed income	256	260	311	302	319	347	394	381	471
<i>Total</i>	614	656	705	671	739	766	830	857	971
Finance and insurance									
Compensation of employees	679	744	754	811	856	811	790	836	907
Gross operating surplus and gross mixed income	300	593	567	438	351	393	385	386	638
<i>Total</i>	979	1 337	1 321	1 249	1 207	1 204	1 175	1 222	1 545
Property and business services									
Compensation of employees	1 136	1 176	1 146	1 219	1 529	1 741	1 794	1 935	1 991
Gross operating surplus and gross mixed income	946	924	926	987	910	947	897	898	972
<i>Total</i>	2 082	2 100	2 072	2 206	2 439	2 688	2 691	2 833	2 963
Government administration and defence									
Compensation of employees	842	874	817	839	995	894	985	1 102	1 214
<i>Total</i>	842	874	817	839	995	894	985	1 102	1 214
Education									
Compensation of employees	1 274	1 408	1 422	1 469	1 578	1 561	1 631	1 748	1 789
Gross operating surplus and gross mixed income	10	12	15	16	18	21	23	27	29
<i>Total</i>	1 284	1 420	1 437	1 485	1 596	1 582	1 654	1 775	1 818

	1989-90	1990-91	1991-92	1992-93	1993-94	1994-95	1995-96	1996-97	1997-98
	\$m	\$m	\$m	\$m	\$m	\$m	\$m	\$m	\$m
Health and community services									
Compensation of employees	1 628	1 787	1 783	1 836	1 976	2 117	2 317	2 271	2 318
Gross operating surplus and gross mixed income	190	216	229	239	260	273	278	279	292
<i>Total</i>	1 818	2 003	2 012	2 075	2 236	2 390	2 595	2 550	2 610
Cultural and recreational services									
Compensation of employees	201	206	219	212	258	283	337	364	400
Gross operating surplus and gross mixed income	154	156	147	175	183	180	177	125	139
<i>Total</i>	355	362	366	387	441	463	514	489	539
Personal and other services									
Compensation of employees	568	617	659	678	725	772	753	718	728
Gross operating surplus and gross mixed income	83	90	107	125	111	152	205	219	245
<i>Total</i>	651	707	766	803	836	924	958	937	973
Ownership of dwellings									
Gross operating surplus	2 184	2 376	2 521	2 610	2 677	2 716	2 789	2 921	3 025
General government									
Gross operating surplus(a)	622	695	703	716	734	766	798	809	819
All industries									
Compensation of employees	14 020	14 770	14 660	15 131	16 145	16 587	17 518	18 140	18 902
Gross operating surplus and gross mixed income	11 816	11 475	11 808	12 264	12 627	13 136	14 395	14 264	15 680
Total	25 836	26 245	26 468	27 395	28 772	29 723	31 913	32 404	34 582

(a) State details for general government gross operating surplus by industry are not available.

	1989-90	1990-91	1991-92	1992-93	1993-94	1994-95	1995-96	1996-97	1997-98
	\$m	\$m	\$m	\$m	\$m	\$m	\$m	\$m	\$m
Agriculture, forestry and fishing									
Compensation of employees	417	399	384	350	397	434	490	522	559
Gross operating surplus and gross mixed income	1 640	794	1 034	1 428	1 508	1 638	2 279	1 912	2 167
<i>Total</i>	2 057	1 193	1 418	1 778	1 905	2 072	2 769	2 434	2 726
Mining									
Compensation of employees	1 327	1 274	1 257	1 254	1 458	1 569	1 736	1 993	2 102
Gross operating surplus and gross mixed income	3 578	5 324	5 659	5 590	5 726	6 856	7 812	7 788	8 885
<i>Total</i>	4 905	6 598	6 916	6 844	7 184	8 425	9 548	9 781	10 987
Manufacturing									
Compensation of employees	2 017	2 073	2 004	1 981	2 139	2 252	2 564	2 766	2 756
Gross operating surplus and gross mixed income	1 854	1 552	1 541	1 626	1 772	1 946	2 028	1 890	2 076
<i>Total</i>	3 871	3 625	3 545	3 607	3 911	4 198	4 592	4 656	4 832
Electricity, gas and water									
Compensation of employees	386	379	397	351	357	340	350	345	363
Gross operating surplus and gross mixed income	744	832	769	822	886	796	1 038	1 248	1 338
<i>Total</i>	1 130	1 211	1 166	1 173	1 243	1 136	1 388	1 593	1 701
Construction									
Compensation of employees	1 231	1 269	1 259	1 350	1 449	1 481	1 470	1 591	1 753
Gross operating surplus and gross mixed income	1 375	1 047	1 123	1 204	1 465	1 560	1 715	1 822	2 109
<i>Total</i>	2 606	2 316	2 382	2 554	2 914	3 041	3 185	3 413	3 862
Wholesale trade									
Compensation of employees	1 182	1 295	1 268	1 334	1 514	1 631	1 613	1 620	1 649
Gross operating surplus and gross mixed income	737	817	859	926	1 060	1 059	1 061	1 063	1 026
<i>Total</i>	1 919	2 112	2 127	2 260	2 574	2 690	2 674	2 683	2 675
Retail trade									
Compensation of employees	1 173	1 204	1 266	1 343	1 503	1 598	1 784	1 855	1 895
Gross operating surplus and gross mixed income	690	670	722	801	908	936	923	930	976
<i>Total</i>	1 863	1 874	1 988	2 144	2 411	2 534	2 707	2 785	2 871
Accommodation, cafes and restaurants									
Compensation of employees	343	385	415	407	433	480	487	517	574
Gross operating surplus and gross mixed income	198	214	187	182	188	224	270	264	290
<i>Total</i>	541	599	602	589	621	704	757	781	864
Transport and storage									
Compensation of employees	1 117	1 216	1 342	1 194	1 220	1 361	1 357	1 449	1 478
Gross operating surplus and gross mixed income	792	743	725	821	808	896	997	1 315	1 438
<i>Total</i>	1 909	1 959	2 067	2 015	2 028	2 257	2 354	2 764	2 916
Communication services									
Compensation of employees	367	393	417	411	426	433	432	445	444
Gross operating surplus and gross mixed income	402	495	618	595	623	734	792	766	958
<i>Total</i>	769	888	1 035	1 006	1 049	1 167	1 224	1 211	1 402
Finance and insurance									
Compensation of employees	740	733	809	794	855	849	802	801	882
Gross operating surplus and gross mixed income	275	367	496	543	1 078	862	835	765	989
<i>Total</i>	1 015	1 100	1 305	1 337	1 933	1 711	1 637	1 566	1 871
Property and business services									
Compensation of employees	1 711	1 638	1 701	2 001	2 235	2 617	2 703	3 138	3 255
Gross operating surplus and gross mixed income	1 443	1 418	1 405	1 493	1 463	1 639	1 691	1 694	1 833
<i>Total</i>	3 154	3 056	3 106	3 494	3 698	4 256	4 394	4 832	5 088
Government administration and defence									
Compensation of employees	957	977	1 133	1 133	1 217	1 297	1 361	1 430	1 516
<i>Total</i>	957	977	1 133	1 133	1 217	1 297	1 361	1 430	1 516
Education									
Compensation of employees	1 313	1 385	1 515	1 544	1 726	1 782	1 779	1 811	1 936
Gross operating surplus and gross mixed income	11	15	18	20	24	29	32	38	41
<i>Total</i>	1 324	1 400	1 533	1 564	1 750	1 811	1 811	1 849	1 977

	1989-90	1990-91	1991-92	1992-93	1993-94	1994-95	1995-96	1996-97	1997-98
	\$m	\$m	\$m	\$m	\$m	\$m	\$m	\$m	\$m
Health and community services									
Compensation of employees	1 654	1 743	1 849	1 926	2 067	2 240	2 567	2 697	2 737
Gross operating surplus and gross mixed income	195	220	231	255	277	310	323	324	343
<i>Total</i>	1 849	1 963	2 080	2 181	2 344	2 550	2 890	3 021	3 080
Cultural and recreational services									
Compensation of employees	166	165	210	223	256	280	343	377	427
Gross operating surplus and gross mixed income	267	246	240	279	310	328	311	325	368
<i>Total</i>	433	411	450	502	566	608	654	702	795
Personal and other services									
Compensation of employees	575	616	791	806	843	925	911	891	916
Gross operating surplus and gross mixed income	93	102	114	134	120	162	217	241	263
<i>Total</i>	668	718	905	940	963	1 087	1 128	1 132	1 179
Ownership of dwellings									
Gross operating surplus	2 440	2 609	2 586	2 672	2 817	3 039	3 259	3 543	3 756
General government									
Gross operating surplus(a)	764	828	900	925	948	990	1 040	1 057	1 083
All industries									
Compensation of employees	16 676	17 144	18 017	18 402	20 095	21 569	22 749	24 248	25 242
Gross operating surplus and gross mixed income	17 498	18 293	19 227	20 316	21 981	24 004	26 623	26 985	29 939
Total	34 174	35 437	37 244	38 718	42 076	45 573	49 372	51 233	55 181

(a) State details for general government gross operating surplus by industry are not available.

	1989-90	1990-91	1991-92	1992-93	1993-94	1994-95	1995-96	1996-97	1997-98
	\$m	\$m	\$m	\$m	\$m	\$m	\$m	\$m	\$m
Agriculture, forestry and fishing									
Compensation of employees	122	124	115	118	122	143	160	179	187
Gross operating surplus and gross mixed income	385	273	247	318	376	309	266	324	390
<i>Total</i>	507	397	362	436	498	452	426	503	577
Mining									
Compensation of employees	149	146	103	109	119	130	149	154	127
Gross operating surplus and gross mixed income	124	47	84	58	59	129	148	116	112
<i>Total</i>	273	193	187	167	178	259	297	270	239
Manufacturing									
Compensation of employees	733	741	731	723	679	743	761	802	830
Gross operating surplus and gross mixed income	497	440	440	471	521	559	627	546	599
<i>Total</i>	1 230	1 181	1 171	1 194	1 200	1 302	1 388	1 348	1 429
Electricity, gas and water									
Compensation of employees	138	155	166	157	141	128	124	119	115
Gross operating surplus and gross mixed income	266	255	298	286	264	304	348	405	399
<i>Total</i>	404	410	464	443	405	432	472	524	514
Construction									
Compensation of employees	188	217	218	222	217	257	238	235	227
Gross operating surplus and gross mixed income	228	193	276	244	246	276	298	312	361
<i>Total</i>	416	410	494	466	463	533	536	547	588
Wholesale trade									
Compensation of employees	229	252	234	225	246	256	253	230	234
Gross operating surplus and gross mixed income	141	157	159	163	175	172	167	168	161
<i>Total</i>	370	409	393	388	421	428	420	398	395
Retail trade									
Compensation of employees	260	303	347	385	379	384	429	413	440
Gross operating surplus and gross mixed income	238	236	243	258	274	276	265	269	280
<i>Total</i>	498	539	590	643	653	660	694	682	720
Accommodation, cafes and restaurants									
Compensation of employees	101	139	143	155	139	162	179	181	199
Gross operating surplus and gross mixed income	55	59	52	53	59	72	86	85	93
<i>Total</i>	156	198	195	208	198	234	265	266	292
Transport and storage									
Compensation of employees	229	217	256	246	233	237	245	237	220
Gross operating surplus and gross mixed income	165	156	138	152	156	172	216	256	262
<i>Total</i>	394	373	394	398	389	409	461	493	482
Communication services									
Compensation of employees	100	110	103	115	107	110	108	119	118
Gross operating surplus and gross mixed income	61	70	87	85	86	103	108	106	130
<i>Total</i>	161	180	190	200	193	213	216	225	248
Finance and insurance									
Compensation of employees	172	191	199	172	172	198	207	229	240
Gross operating surplus and gross mixed income	79	138	165	133	256	231	230	230	267
<i>Total</i>	251	329	364	305	428	429	437	459	507
Property and business services									
Compensation of employees	284	283	280	283	271	283	308	336	306
Gross operating surplus and gross mixed income	192	175	176	178	163	182	217	217	235
<i>Total</i>	476	458	456	461	434	465	525	553	541
Government administration and defence									
Compensation of employees	346	367	429	379	410	454	488	496	536
<i>Total</i>	346	367	429	379	410	454	488	496	536
Education									
Compensation of employees	383	413	401	416	442	464	482	498	516
Gross operating surplus and gross mixed income	3	4	4	5	5	6	7	8	8
<i>Total</i>	386	417	405	421	447	470	489	506	524

	1989-90	1990-91	1991-92	1992-93	1993-94	1994-95	1995-96	1996-97	1997-98
	\$m	\$m	\$m	\$m	\$m	\$m	\$m	\$m	\$m
Health and community services									
Compensation of employees	492	514	485	530	550	600	678	712	748
Gross operating surplus and gross mixed income	58	66	70	74	82	92	100	102	110
<i>Total</i>	550	580	555	604	632	692	778	814	858
Cultural and recreational services									
Compensation of employees	53	50	58	67	57	61	70	83	91
Gross operating surplus and gross mixed income	66	60	55	68	61	71	64	66	65
<i>Total</i>	119	110	113	135	118	132	134	149	156
Personal and other services									
Compensation of employees	146	161	153	156	160	174	182	184	201
Gross operating surplus and gross mixed income	18	20	21	22	20	25	34	41	43
<i>Total</i>	164	181	174	178	180	199	216	225	244
Ownership of dwellings									
Gross operating surplus	527	593	636	682	712	741	789	865	916
General government									
Gross operating surplus(a)	238	261	281	284	290	299	309	309	310
All industries									
Compensation of employees	4 125	4 383	4 421	4 458	4 444	4 784	5 061	5 207	5 335
Gross operating surplus and gross mixed income	3 341	3 203	3 432	3 534	3 805	4 019	4 279	4 425	4 741
Total	7 466	7 586	7 853	7 992	8 249	8 803	9 340	9 632	10 076

(a) State details for general government gross operating surplus by industry are not available.

	1989-90	1990-91	1991-92	1992-93	1993-94	1994-95	1995-96	1996-97	1997-98
	\$m	\$m	\$m	\$m	\$m	\$m	\$m	\$m	\$m
Agriculture, forestry and fishing									
Compensation of employees	35	30	31	27	29	43	46	44	46
Gross operating surplus and gross mixed income	122	104	88	110	173	149	176	181	134
<i>Total</i>	157	134	119	137	202	192	222	225	180
Mining									
Compensation of employees	95	101	95	118	118	132	140	165	190
Gross operating surplus and gross mixed income	876	1 155	956	975	635	641	716	727	743
<i>Total</i>	971	1 256	1 051	1 093	753	773	856	892	933
Manufacturing									
Compensation of employees	116	108	135	123	128	140	141	149	152
Gross operating surplus and gross mixed income	61	69	71	71	93	79	102	82	90
<i>Total</i>	177	177	206	194	221	219	243	231	242
Electricity, gas and water									
Compensation of employees	51	48	42	42	41	42	48	41	41
Gross operating surplus and gross mixed income	71	66	69	53	50	46	51	68	63
<i>Total</i>	122	114	111	95	91	88	99	109	104
Construction									
Compensation of employees	189	201	188	155	168	197	193	175	166
Gross operating surplus and gross mixed income	105	130	105	99	133	128	128	128	148
<i>Total</i>	294	331	293	254	301	325	321	303	314
Wholesale trade									
Compensation of employees	81	83	92	74	80	92	96	116	115
Gross operating surplus and gross mixed income	53	62	64	70	75	77	79	74	71
<i>Total</i>	134	145	156	144	155	169	175	190	186
Retail trade									
Compensation of employees	159	139	167	154	179	190	206	212	217
Gross operating surplus and gross mixed income	83	84	88	99	106	112	113	108	110
<i>Total</i>	242	223	255	253	285	302	319	320	327
Accommodation, cafes and restaurants									
Compensation of employees	57	70	90	96	94	107	108	115	124
Gross operating surplus and gross mixed income	42	45	39	38	39	49	59	58	63
<i>Total</i>	99	115	129	134	133	156	167	173	187
Transport and storage									
Compensation of employees	79	90	111	96	100	114	112	139	145
Gross operating surplus and gross mixed income	103	107	102	114	121	131	164	206	226
<i>Total</i>	182	197	213	210	221	245	276	345	371
Communication services									
Compensation of employees	46	44	41	57	64	72	66	79	78
Gross operating surplus and gross mixed income	38	43	53	51	54	74	66	70	87
<i>Total</i>	84	87	94	108	118	146	132	149	165
Finance and insurance									
Compensation of employees	58	49	50	52	50	55	60	72	80
Gross operating surplus and gross mixed income	14	18	48	117	133	64	40	15	64
<i>Total</i>	72	67	98	169	183	119	100	87	144
Property and business services									
Compensation of employees	183	224	253	202	213	268	269	286	278
Gross operating surplus and gross mixed income	80	80	80	85	81	109	141	142	153
<i>Total</i>	263	304	333	287	294	377	410	428	431
Government administration and defence									
Compensation of employees	319	313	281	308	351	375	399	452	507
<i>Total</i>	319	313	281	308	351	375	399	452	507
Education									
Compensation of employees	184	194	208	208	224	240	260	278	304
Gross operating surplus and gross mixed income	1	1	1	2	2	2	2	2	2
<i>Total</i>	185	195	209	210	226	242	262	280	306

	1989-90	1990-91	1991-92	1992-93	1993-94	1994-95	1995-96	1996-97	1997-98
	\$m	\$m	\$m	\$m	\$m	\$m	\$m	\$m	\$m
Health and community services									
Compensation of employees	188	182	184	174	212	244	284	313	324
Gross operating surplus and gross mixed income	15	18	19	19	21	23	23	24	25
<i>Total</i>	203	200	203	193	233	267	307	337	349
Cultural and recreational services									
Compensation of employees	36	35	42	51	58	75	90	109	122
Gross operating surplus and gross mixed income	39	34	28	41	48	46	47	52	58
<i>Total</i>	75	69	70	92	106	121	137	161	180
Personal and other services									
Compensation of employees	82	78	92	102	101	121	131	143	158
Gross operating surplus and gross mixed income	2	3	3	4	3	4	5	8	8
<i>Total</i>	84	81	95	106	104	125	136	151	166
Ownership of dwellings									
Gross operating surplus	182	204	222	229	238	255	278	310	336
General government									
Gross operating surplus(a)	88	101	107	110	113	117	125	125	124
All industries									
Compensation of employees	1 958	1 989	2 102	2 039	2 210	2 507	2 649	2 888	3 047
Gross operating surplus and gross mixed income	1 975	2 324	2 143	2 287	2 118	2 106	2 315	2 380	2 505
Total	3 933	4 313	4 245	4 326	4 328	4 613	4 964	5 268	5 552

(a) State details for general government gross operating surplus by industry are not available.

	1989-90	1990-91	1991-92	1992-93	1993-94	1994-95	1995-96	1996-97	1997-98
	\$m	\$m	\$m	\$m	\$m	\$m	\$m	\$m	\$m
Agriculture, forestry and fishing									
Compensation of employees	4	5	3	2	2	2	4	3	4
Gross operating surplus and gross mixed income	15	7	5	9	8	8	10	10	12
<i>Total</i>	19	12	8	11	10	10	14	13	16
Mining									
Compensation of employees	6	5	4	5	5	4	3	2	2
Gross operating surplus and gross mixed income	3	2	2	2	2	—	—	—	—
<i>Total</i>	9	7	6	7	7	4	3	2	2
Manufacturing									
Compensation of employees	120	111	121	127	121	140	154	145	131
Gross operating surplus and gross mixed income	53	51	54	59	68	68	68	69	76
<i>Total</i>	173	162	175	186	189	208	222	214	207
Electricity, gas and water									
Compensation of employees	57	62	63	64	76	71	78	91	89
Gross operating surplus and gross mixed income	75	70	90	91	90	107	111	107	148
<i>Total</i>	132	132	153	155	166	178	189	198	237
Construction									
Compensation of employees	209	195	227	250	276	302	340	358	325
Gross operating surplus and gross mixed income	196	206	233	231	222	241	228	232	269
<i>Total</i>	405	401	460	481	498	543	568	590	594
Wholesale trade									
Compensation of employees	166	169	151	141	152	154	154	146	146
Gross operating surplus and gross mixed income	45	51	56	59	65	62	60	62	61
<i>Total</i>	211	220	207	200	217	216	214	208	207
Retail trade									
Compensation of employees	193	212	199	247	240	268	289	308	302
Gross operating surplus and gross mixed income	139	139	154	168	182	180	172	179	190
<i>Total</i>	332	351	353	415	422	448	461	487	492
Accommodation, cafes and restaurants									
Compensation of employees	61	90	88	106	126	122	132	122	146
Gross operating surplus and gross mixed income	49	53	47	45	47	55	66	64	71
<i>Total</i>	110	143	135	151	173	177	198	186	217
Transport and storage									
Compensation of employees	139	140	162	150	163	165	174	182	172
Gross operating surplus and gross mixed income	81	104	111	117	122	128	163	178	193
<i>Total</i>	220	244	273	267	285	293	337	360	365
Communication services									
Compensation of employees	73	78	89	81	106	113	108	104	106
Gross operating surplus and gross mixed income	65	86	108	111	140	146	140	137	172
<i>Total</i>	138	164	197	192	246	259	248	241	278
Finance and insurance									
Compensation of employees	161	146	134	147	175	168	193	185	206
Gross operating surplus and gross mixed income	64	104	113	122	287	240	229	212	241
<i>Total</i>	225	250	247	269	462	408	422	397	447
Property and business services									
Compensation of employees	497	545	624	648	718	694	695	719	756
Gross operating surplus and gross mixed income	353	366	383	418	325	364	457	458	496
<i>Total</i>	850	911	1 007	1 066	1 043	1 058	1 152	1 177	1 252
Government administration and defence									
Compensation of employees	1 910	2 106	2 075	2 159	2 394	2 651	2 765	3 026	3 203
<i>Total</i>	1 910	2 106	2 075	2 159	2 394	2 651	2 765	3 026	3 203
Education									
Compensation of employees	440	478	516	582	524	529	583	623	632
Gross operating surplus and gross mixed income	4	4	5	6	7	7	8	10	10
<i>Total</i>	444	482	521	588	531	536	591	633	642

	1989-90	1990-91	1991-92	1992-93	1993-94	1994-95	1995-96	1996-97	1997-98
	\$m	\$m	\$m	\$m	\$m	\$m	\$m	\$m	\$m
Health and community services									
Compensation of employees	267	299	290	298	331	379	412	446	500
Gross operating surplus and gross mixed income	42	45	48	51	53	58	59	59	61
<i>Total</i>	309	344	338	349	384	437	471	505	561
Cultural and recreational services									
Compensation of employees	137	156	172	162	170	195	233	252	264
Gross operating surplus and gross mixed income	51	30	31	39	49	49	51	48	57
<i>Total</i>	188	186	203	201	219	244	284	300	321
Personal and other services									
Compensation of employees	186	186	202	237	252	249	258	287	321
Gross operating surplus and gross mixed income	13	15	17	20	18	25	33	39	43
<i>Total</i>	199	201	219	257	270	274	291	326	364
Ownership of dwellings									
Gross operating surplus	591	631	695	758	786	804	805	830	855
General government									
Gross operating surplus(a)	392	465	508	480	512	447	454	394	352
All industries									
Compensation of employees	4 626	4 983	5 120	5 406	5 831	6 206	6 575	6 999	7 305
Gross operating surplus and gross mixed income	2 231	2 429	2 660	2 786	2 983	2 989	3 114	3 088	3 307
Total	6 857	7 412	7 780	8 192	8 814	9 195	9 689	10 087	10 612

(a) State details for general government gross operating surplus by industry are not available.

	1989-90	1990-91	1991-92	1992-93	1993-94	1994-95	1995-96	1996-97	1997-98
	\$m	\$m	\$m	\$m	\$m	\$m	\$m	\$m	\$m
Agriculture, forestry and fishing									
Compensation of employees	3 181	3 049	2 873	2 917	3 133	3 469	3 668	3 808	3 940
Gross operating surplus and gross mixed income	12 525	8 550	8 197	9 982	11 406	9 354	12 694	12 468	12 864
<i>Total</i>	15 706	11 599	11 070	12 899	14 539	12 823	16 362	16 276	16 804
Mining									
Compensation of employees	4 725	4 881	4 601	4 689	4 834	4 909	5 645	6 142	6 672
Gross operating surplus and gross mixed income	11 657	14 033	13 916	14 862	14 130	15 058	16 547	16 079	18 019
<i>Total</i>	16 382	18 914	18 517	19 551	18 964	19 967	22 192	22 221	24 691
Manufacturing									
Compensation of employees	29 734	29 695	29 339	30 362	31 314	33 127	35 525	37 135	38 510
Gross operating surplus and gross mixed income	19 873	18 218	19 217	21 261	24 176	25 265	26 142	24 671	27 100
<i>Total</i>	49 607	47 913	48 556	51 623	55 490	58 392	61 667	61 806	65 610
Electricity, gas and water									
Compensation of employees	4 481	4 559	4 592	4 394	4 110	3 857	3 879	3 811	3 688
Gross operating surplus and gross mixed income	7 349	7 614	8 240	8 776	8 932	8 973	9 544	9 881	10 340
<i>Total</i>	11 830	12 173	12 832	13 170	13 042	12 830	13 423	13 692	14 028
Construction									
Compensation of employees	11 462	11 626	10 330	10 541	11 157	12 256	12 429	12 863	13 935
Gross operating surplus and gross mixed income	10 969	9 871	9 903	9 581	10 494	11 801	12 358	12 882	14 917
<i>Total</i>	22 431	21 497	20 233	20 122	21 651	24 057	24 787	25 745	28 852
Wholesale trade									
Compensation of employees	14 044	14 777	14 463	14 853	15 725	16 395	16 950	17 760	18 881
Gross operating surplus and gross mixed income	7 342	7 980	8 094	8 256	9 002	9 007	9 006	9 154	8 729
<i>Total</i>	21 386	22 757	22 557	23 109	24 727	25 402	25 956	26 914	27 610
Retail trade									
Compensation of employees	13 329	13 850	14 114	14 988	15 717	16 572	18 400	19 586	20 207
Gross operating surplus and gross mixed income	7 034	6 725	7 001	7 349	7 932	8 221	8 090	8 254	8 562
<i>Total</i>	20 363	20 575	21 115	22 337	23 649	24 793	26 490	27 840	28 769
Accommodation, cafes and restaurants									
Compensation of employees	4 233	4 657	5 099	5 362	5 679	6 446	6 688	7 165	7 843
Gross operating surplus and gross mixed income	2 604	2 810	2 463	2 392	2 448	2 877	3 459	3 390	3 720
<i>Total</i>	6 837	7 467	7 562	7 754	8 127	9 323	10 147	10 555	11 563
Transport and storage									
Compensation of employees	11 713	12 037	12 702	12 425	13 008	14 312	14 636	15 508	15 592
Gross operating surplus and gross mixed income	7 151	6 951	7 088	7 812	8 437	9 099	10 624	12 979	13 330
<i>Total</i>	18 864	18 988	19 790	20 237	21 445	23 411	25 260	28 487	28 922
Communication services									
Compensation of employees	4 987	5 314	5 445	5 732	5 794	6 174	6 749	7 091	7 083
Gross operating surplus and gross mixed income	3 877	4 452	5 377	5 400	5 712	6 336	6 873	6 785	8 464
<i>Total</i>	8 864	9 766	10 822	11 132	11 506	12 510	13 622	13 876	15 547
Finance and insurance									
Compensation of employees	11 490	11 846	12 042	11 872	12 564	13 306	14 650	15 736	16 583
Gross operating surplus and gross mixed income	5 308	8 415	9 547	11 943	12 558	11 363	11 401	10 652	12 235
<i>Total</i>	16 798	20 261	21 589	23 815	25 122	24 669	26 051	26 388	28 818
Property and business services									
Compensation of employees	19 012	19 543	19 838	21 228	22 832	26 371	28 722	32 409	32 588
Gross operating surplus and gross mixed income	16 035	15 934	15 963	17 030	16 256	18 206	19 279	19 309	20 898
<i>Total</i>	35 047	35 477	35 801	38 258	39 088	44 577	48 001	51 718	53 486
Government administration and defence									
Compensation of employees	12 703	13 456	14 368	15 042	16 121	16 909	17 952	20 014	20 837
<i>Total</i>	12 703	13 456	14 368	15 042	16 121	16 909	17 952	20 014	20 837
Education									
Compensation of employees	14 618	15 707	16 619	18 063	18 936	19 547	20 090	21 163	22 453
Gross operating surplus and gross mixed income	138	173	200	222	249	291	326	383	416
<i>Total</i>	14 756	15 880	16 819	18 285	19 185	19 838	20 416	21 546	22 869

	1989-90	1990-91	1991-92	1992-93	1993-94	1994-95	1995-96	1996-97	1997-98
	\$m	\$m	\$m	\$m	\$m	\$m	\$m	\$m	\$m
Health and community services									
Compensation of employees	16 443	18 430	19 365	19 911	20 583	21 475	23 402	25 025	26 860
Gross operating surplus and gross mixed income	2 281	2 590	2 710	3 053	3 317	3 600	3 716	3 744	3 935
<i>Total</i>	18 724	21 020	22 075	22 964	23 900	25 075	27 118	28 769	30 795
Cultural and recreational services									
Compensation of employees	2 584	2 725	3 118	3 102	3 266	3 818	4 551	5 074	5 645
Gross operating surplus and gross mixed income	2 604	2 400	2 430	3 000	3 293	3 316	3 380	3 336	3 855
<i>Total</i>	5 188	5 125	5 548	6 102	6 559	7 134	7 931	8 410	9 500
Personal and other services									
Compensation of employees	5 776	6 148	6 866	7 175	7 358	7 961	8 295	8 469	8 767
Gross operating surplus and gross mixed income	927	1 044	1 161	1 339	1 180	1 573	2 104	2 360	2 574
<i>Total</i>	6 703	7 192	8 027	8 514	8 538	9 534	10 399	10 829	11 341
Ownership of dwellings									
Gross operating surplus	30 936	33 477	34 618	35 470	36 754	38 629	41 373	44 795	47 205
General government									
Gross operating surplus(a)	7 859	8 583	9 103	9 390	9 713	10 024	10 456	10 574	10 932
All industries									
Compensation of employees	184 515	192 300	195 774	202 656	212 131	226 904	242 231	258 759	270 084
Gross operating surplus and gross mixed income	156 469	159 820	165 228	177 118	185 989	192 994	207 372	211 696	228 095
Total	340 984	352 120	361 002	379 774	398 120	419 897	449 603	470 455	498 179

(a) State details for general government gross operating surplus by industry are not available. General government gross operating surplus for Australia is allocated by industry in Table 3.1 of Australian System of National Accounts (ABS Catalogue No. 5204.0).

1989-90 1990-91 1991-92 1992-93 1993-94 1994-95 1995-96 1996-97 1997-98

GROSS HOUSEHOLD INCOME (\$M)

New South Wales	125 658	131 205	130 720	133 647	139 408	149 533	161 961	169 925	176 262
Victoria	97 178	99 780	98 074	99 205	101 188	107 617	114 399	118 839	123 677
Queensland	52 702	54 289	55 864	59 608	62 288	68 800	74 581	79 371	81 856
South Australia	28 089	28 823	28 831	28 883	30 275	31 952	34 545	34 905	36 308
Western Australia	32 364	32 427	33 240	34 196	36 013	39 493	43 439	45 755	47 593
Tasmania	8 134	8 610	8 577	8 604	8 682	9 354	9 993	10 172	10 392
Northern Territory	3 015	3 082	3 266	3 161	3 465	3 900	4 223	4 549	4 723
Australian Capital Territory	7 678	8 236	8 244	8 622	9 227	10 056	10 541	10 801	11 013
Australia	354 819	366 453	366 816	375 928	390 545	420 706	453 682	474 318	491 823

GROSS HOUSEHOLD INCOME PER HEAD OF MEAN POPULATION (\$)

New South Wales	21 655	22 368	22 033	22 324	23 100	24 541	26 262	27 223	27 946
Victoria	22 345	22 669	22 094	22 215	22 588	23 904	25 201	25 921	26 693
Queensland	18 395	18 528	18 647	19 413	19 775	21 333	22 576	23 557	23 883
South Australia	19 704	20 026	19 857	19 801	20 682	21 769	23 476	23 634	24 476
Western Australia	20 269	19 952	20 171	20 496	21 307	22 983	24 825	25 666	26 232
Tasmania	17 741	18 531	18 309	18 271	18 378	19 757	21 078	21 449	21 983
Northern Territory	18 592	18 695	19 551	18 647	20 115	22 249	23 464	24 660	25 071
Australian Capital Territory	27 507	28 852	28 249	29 023	30 746	33 169	34 404	35 006	35 786
Australia	20 947	21 334	21 088	21 375	21 982	23 423	24 935	25 742	26 389

GROSS HOUSEHOLD DISPOSABLE INCOME (\$M)

New South Wales	91 853	97 281	100 169	103 894	109 052	115 428	123 849	128 933	133 657
Victoria	71 461	74 183	75 538	77 240	79 084	83 361	87 483	90 872	94 606
Queensland	38 742	40 204	43 005	46 732	48 366	52 954	56 542	60 445	62 669
South Australia	20 672	21 457	22 375	22 580	23 861	24 991	26 651	26 872	27 811
Western Australia	23 509	23 728	25 387	26 371	27 556	30 164	32 758	34 522	35 936
Tasmania	6 092	6 480	6 669	6 700	6 712	7 217	7 580	7 688	7 888
Northern Territory	2 329	2 374	2 598	2 503	2 760	3 114	3 352	3 586	3 715
Australian Capital Territory	5 616	6 111	6 389	6 776	7 248	7 941	8 153	8 306	8 502
Australia	260 274	271 818	282 130	292 798	304 640	325 169	346 368	361 223	374 783

GROSS HOUSEHOLD DISPOSABLE INCOME PER HEAD OF MEAN POPULATION (\$)

New South Wales	15 830	16 585	16 884	17 354	18 070	18 944	20 082	20 656	21 191
Victoria	16 432	16 854	17 017	17 296	17 653	18 516	19 272	19 821	20 419
Queensland	13 523	13 721	14 355	15 220	15 355	16 419	17 116	17 940	18 285
South Australia	14 501	14 908	15 411	15 480	16 301	17 027	18 111	18 195	18 748
Western Australia	14 723	14 600	15 406	15 806	16 304	17 554	18 721	19 365	19 807
Tasmania	13 287	13 947	14 236	14 228	14 208	15 243	15 988	16 211	16 686
Northern Territory	14 362	14 400	15 552	14 765	16 022	17 765	18 624	19 440	19 720
Australian Capital Territory	20 119	21 408	21 893	22 809	24 151	26 192	26 610	26 920	27 627
Australia	15 366	15 825	16 219	16 648	17 147	18 104	19 037	19 604	20 109

	1989-90	1990-91	1991-92	1992-93	1993-94	1994-95	1995-96	1996-97	1997-98
	\$m	\$m	\$m	\$m	\$m	\$m	\$m	\$m	\$m
Income									
Primary income receivable									
Compensation of employees	65 734	69 339	71 096	72 009	75 430	80 518	86 730	92 853	97 594
Gross operating surplus—dwellings owned by persons	12 514	13 393	13 928	14 437	14 994	15 796	17 207	18 585	19 641
Gross mixed income	13 161	12 858	11 780	13 760	14 531	14 392	15 385	15 766	16 119
Property income receivable	19 882	19 582	16 051	14 550	13 992	16 916	18 789	17 843	16 905
<i>Total primary income receivable</i>	<i>111 291</i>	<i>115 172</i>	<i>112 855</i>	<i>114 756</i>	<i>118 947</i>	<i>127 622</i>	<i>138 111</i>	<i>145 047</i>	<i>150 259</i>
Secondary income receivable									
Social benefits receivable									
Workers' compensation	1 205	1 166	1 267	1 377	1 418	1 701	1 898	2 045	2 099
Social assistance benefits	8 567	9 829	11 373	12 425	13 369	13 720	14 836	15 762	15 862
Current transfers to non-profit institutions	1 338	1 486	1 733	1 793	2 044	2 297	2 650	2 809	2 997
Other secondary income receivable	3 257	3 551	3 492	3 297	3 629	4 193	4 466	4 261	5 045
<i>Total secondary income receivable</i>	<i>14 368</i>	<i>16 033</i>	<i>17 865</i>	<i>18 891</i>	<i>20 460</i>	<i>21 912</i>	<i>23 850</i>	<i>24 878</i>	<i>26 003</i>
Total gross income	125 658	131 205	130 720	133 647	139 408	149 533	161 961	169 925	176 262
Uses of income									
Primary income payable									
Property income payable									
Dwellings and unincorporated enterprises	8 220	8 801	7 101	6 449	5 578	6 946	8 032	7 953	7 691
Consumer debt interest	2 820	2 118	1 370	899	933	1 260	1 566	1 542	1 432
Total property income payable	11 040	10 919	8 470	7 348	6 511	8 206	9 597	9 495	9 124
Total primary income payable	11 040	10 919	8 470	7 348	6 511	8 206	9 597	9 495	9 124
Secondary income payable									
Income tax payable	18 176	18 412	17 196	17 152	18 311	19 919	22 032	24 431	26 035
Other current taxes on income, wealth, etc.	417	358	458	509	560	589	580	644	704
Social contributions for workers' compensation	1 294	1 241	1 166	1 301	1 290	1 653	1 860	1 996	2 065
Other secondary income payable	2 876	2 995	3 261	3 442	3 684	3 738	4 043	4 427	4 678
<i>Total secondary income payable</i>	<i>22 763</i>	<i>23 006</i>	<i>22 081</i>	<i>22 404</i>	<i>23 845</i>	<i>25 899</i>	<i>28 515</i>	<i>31 498</i>	<i>33 482</i>
Total income payable	33 805	33 925	30 551	29 753	30 355	34 105	38 112	40 992	42 605
Gross disposable income	91 853	97 281	100 169	103 894	109 052	115 428	123 849	128 933	133 657
Final consumption expenditure	79 458	84 797	88 553	91 058	93 841	99 697	107 530	111 773	117 507
Net saving plus consumption of fixed capital(a)	12 395	12 484	11 616	12 836	15 212	15 731	16 319	17 159	16 150
Total use of gross income	125 658	131 205	130 720	133 647	139 408	149 533	161 961	169 925	176 262

(a) Net saving plus consumption of fixed capital is derived as a balancing item.

	1989-90	1990-91	1991-92	1992-93	1993-94	1994-95	1995-96	1996-97	1997-98
	\$m	\$m	\$m	\$m	\$m	\$m	\$m	\$m	\$m
Income									
Primary income receivable									
Compensation of employees	50 701	52 047	51 023	53 634	55 311	58 588	61 953	65 642	68 363
Gross operating surplus—dwellings owned by persons	7 728	8 435	8 481	8 350	8 378	8 694	9 310	10 249	10 922
Gross mixed income	12 316	11 468	12 010	11 542	11 483	11 430	12 515	12 521	13 117
Property income receivable	15 457	15 249	12 625	11 081	10 479	12 717	13 713	13 081	12 358
<i>Total primary income receivable</i>	86 202	87 199	84 139	84 607	85 651	91 429	97 491	101 493	104 760
Secondary income receivable									
Social benefits receivable									
Workers' compensation	1 219	1 360	1 488	1 387	1 229	1 194	1 107	1 012	1 038
Social assistance benefits	6 091	7 352	8 650	9 339	10 105	10 277	10 794	11 413	11 455
Current transfers to non-profit institutions	1 242	1 223	1 216	1 446	1 538	1 656	1 778	1 851	2 764
Other secondary income receivable	2 424	2 646	2 581	2 426	2 666	3 061	3 230	3 071	3 660
<i>Total secondary income receivable</i>	10 976	12 581	13 935	14 598	15 537	16 188	16 909	17 346	18 917
Total gross income	97 178	99 780	98 074	99 205	101 188	107 617	114 399	118 839	123 677
Uses of income									
Primary income payable									
Property income payable									
Dwellings and unincorporated enterprises	6 871	7 127	5 448	4 973	4 612	5 498	6 244	5 822	5 469
Consumer debt interest	1 758	1 458	916	610	628	839	1 054	1 093	1 086
Total property income payable	8 629	8 585	6 364	5 583	5 240	6 338	7 299	6 915	6 555
Total primary income payable	8 629	8 585	6 364	5 583	5 240	6 338	7 299	6 915	6 555
Secondary income payable									
Income tax payable	13 441	13 174	12 139	12 219	12 658	13 626	15 187	16 419	17 625
Other current taxes on income, wealth, etc.	192	151	237	298	359	377	378	405	445
Social contributions for workers' compensation	1 310	1 447	1 369	1 310	1 118	1 160	1 085	987	1 022
Other secondary income payable	2 145	2 240	2 427	2 555	2 728	2 756	2 969	3 242	3 425
<i>Total secondary income payable</i>	17 088	17 012	16 172	16 382	16 863	17 919	19 619	21 053	22 517
Total income payable	25 717	25 597	22 536	21 964	22 103	24 257	26 917	27 967	29 071
Gross disposable income	71 461	74 183	75 538	77 240	79 084	83 361	87 483	90 872	94 606
Final consumption expenditure	56 902	59 824	62 359	65 113	67 163	71 131	75 593	79 278	84 947
Net saving plus consumption of fixed capital(a)	14 558	14 359	13 178	12 127	11 922	12 230	11 890	11 594	9 658
Total use of gross income	97 178	99 780	98 074	99 205	101 188	107 617	114 399	118 839	123 677

(a) Net saving plus consumption of fixed capital is derived as a balancing item.

	1989-90	1990-91	1991-92	1992-93	1993-94	1994-95	1995-96	1996-97	1997-98
	\$m	\$m	\$m	\$m	\$m	\$m	\$m	\$m	\$m
Income									
Primary income receivable									
Compensation of employees	26 650	27 647	29 438	31 722	32 840	36 271	39 119	42 888	44 536
Gross operating surplus—dwellings owned by persons	4 232	4 694	5 017	5 286	5 650	6 042	6 434	6 940	7 202
Gross mixed income	7 629	6 932	6 659	7 990	8 516	9 341	9 632	9 992	10 265
Property income receivable	7 356	7 123	5 973	5 147	4 755	5 757	6 950	6 580	6 272
<i>Total primary income receivable</i>	<i>45 867</i>	<i>46 396</i>	<i>47 087</i>	<i>50 145</i>	<i>51 761</i>	<i>57 411</i>	<i>62 135</i>	<i>66 400</i>	<i>68 275</i>
Secondary income receivable									
Social benefits receivable									
Workers' compensation	259	295	333	406	456	573	659	726	747
Social assistance benefits	4 327	5 094	5 803	6 353	7 034	7 324	7 957	8 404	8 426
Current transfers to non-profit institutions	676	768	920	1 050	1 166	1 305	1 484	1 577	1 680
Other secondary income receivable	1 573	1 736	1 721	1 654	1 871	2 188	2 345	2 265	2 727
<i>Total secondary income receivable</i>	<i>6 834</i>	<i>7 893</i>	<i>8 777</i>	<i>9 463</i>	<i>10 527</i>	<i>11 389</i>	<i>12 445</i>	<i>12 971</i>	<i>13 580</i>
Total gross income	52 702	54 289	55 864	59 608	62 288	68 800	74 581	79 371	81 856
Uses of income									
Primary income payable									
Property income payable									
Dwellings and unincorporated enterprises	3 540	3 797	3 031	2 632	2 852	3 571	4 387	3 842	3 527
Consumer debt interest	1 435	999	649	469	504	708	898	896	835
Total property income payable	4 975	4 795	3 679	3 101	3 356	4 279	5 285	4 738	4 362
Total primary income payable	4 975	4 795	3 679	3 101	3 356	4 279	5 285	4 738	4 362
Secondary income payable									
Income tax payable	7 078	7 289	6 987	7 359	7 934	8 736	9 636	10 750	11 190
Other current taxes on income, wealth, etc.	198	188	243	269	296	297	306	341	360
Social contributions for workers' compensation	278	314	306	384	415	556	646	708	735
Other secondary income payable	1 431	1 499	1 644	1 764	1 921	1 978	2 167	2 390	2 541
<i>Total secondary income payable</i>	<i>8 985</i>	<i>9 290</i>	<i>9 180</i>	<i>9 776</i>	<i>10 566</i>	<i>11 567</i>	<i>12 755</i>	<i>14 189</i>	<i>14 826</i>
Total income payable	13 960	14 085	12 859	12 876	13 922	15 847	18 039	18 927	19 187
Gross disposable income	38 742	40 204	43 005	46 732	48 366	52 954	56 542	60 445	62 669
Final consumption expenditure	34 233	36 862	39 509	42 635	45 396	48 908	52 044	54 084	57 861
Net saving plus consumption of fixed capital(a)	4 509	3 342	3 496	4 097	2 970	4 046	4 498	6 361	4 808
Total use of gross income	52 702	54 289	55 864	59 608	62 288	68 800	74 581	79 371	81 856

(a) Net saving plus consumption of fixed capital is derived as a balancing item.

	1989-90	1990-91	1991-92	1992-93	1993-94	1994-95	1995-96	1996-97	1997-98
	\$m	\$m	\$m	\$m	\$m	\$m	\$m	\$m	\$m
Income									
Primary income receivable									
Compensation of employees	14 017	14 770	14 669	15 146	16 163	16 598	17 529	18 150	18 895
Gross operating surplus—dwellings owned by persons	2 125	2 317	2 453	2 536	2 602	2 639	2 710	2 858	2 949
Gross mixed income	4 183	3 540	3 685	3 528	3 718	3 919	4 672	4 366	4 823
Property income receivable	4 020	3 946	3 294	2 769	2 578	3 187	3 709	3 387	3 215
<i>Total primary income receivable</i>	24 345	24 573	24 101	23 979	25 061	26 343	28 620	28 761	29 882
Secondary income receivable									
Social benefits receivable									
Workers' compensation	351	404	447	423	382	431	459	476	490
Social assistance benefits	2 264	2 617	3 033	3 241	3 429	3 592	3 782	4 003	4 018
Current transfers to non-profit institutions	356	386	431	466	539	600	655	694	761
Other secondary income receivable	772	843	819	775	863	985	1 028	972	1 158
<i>Total secondary income receivable</i>	3 744	4 250	4 730	4 905	5 214	5 608	5 924	6 145	6 426
Total gross income	28 089	28 823	28 831	28 883	30 275	31 952	34 545	34 905	36 308
Uses of income									
Primary income payable									
Property income payable									
Dwellings and unincorporated enterprises	1 988	1 936	1 398	1 234	1 125	1 333	1 672	1 523	1 449
Consumer debt interest	576	462	283	202	217	290	360	373	397
Total property income payable	2 565	2 398	1 681	1 437	1 342	1 623	2 033	1 895	1 845
Total primary income payable	2 565	2 398	1 681	1 437	1 342	1 623	2 033	1 895	1 845
Secondary income payable									
Income tax payable	3 692	3 737	3 480	3 529	3 717	3 901	4 330	4 505	4 936
Other current taxes on income, wealth, etc.	83	76	97	108	117	121	120	127	140
Social contributions for workers' compensation	377	430	411	400	348	419	450	464	482
Other secondary income payable	700	725	787	829	890	897	961	1 043	1 094
<i>Total secondary income payable</i>	4 852	4 968	4 775	4 866	5 072	5 338	5 861	6 139	6 652
Total income payable	7 417	7 366	6 455	6 303	6 414	6 961	7 893	8 034	8 496
Gross disposable income	20 672	21 457	22 375	22 580	23 861	24 991	26 651	26 872	27 811
Final consumption expenditure	16 586	18 379	19 132	19 538	20 400	21 475	22 617	22 920	24 294
Net saving plus consumption of fixed capital(a)	4 086	3 078	3 244	3 042	3 461	3 516	4 034	3 951	3 517
Total use of gross income	28 089	28 823	28 831	28 883	30 275	31 952	34 545	34 905	36 308

(a) Net saving plus consumption of fixed capital is derived as a balancing item.

	1989-90	1990-91	1991-92	1992-93	1993-94	1994-95	1995-96	1996-97	1997-98
	\$m	\$m	\$m	\$m	\$m	\$m	\$m	\$m	\$m
Income									
Primary income receivable									
Compensation of employees	16 671	17 144	18 027	18 421	20 116	21 582	22 760	24 263	25 253
Gross operating surplus—dwellings owned by persons	2 378	2 546	2 514	2 588	2 734	2 955	3 177	3 474	3 671
Gross mixed income	5 011	4 032	4 341	4 964	4 728	5 327	6 734	7 217	7 690
Property income receivable	4 407	4 257	3 433	3 059	2 861	3 536	4 128	3 932	3 743
<i>Total primary income receivable</i>	28 467	27 979	28 315	29 032	30 439	33 400	36 799	38 886	40 357
Secondary income receivable									
Social benefits receivable									
Workers' compensation	265	247	262	304	350	390	411	423	435
Social assistance benefits	2 256	2 701	3 134	3 316	3 521	3 675	3 992	4 189	4 216
Current transfers to non-profit institutions	458	503	562	632	691	846	976	1 040	1 130
Other secondary income receivable	918	998	967	912	1 013	1 181	1 260	1 217	1 455
<i>Total secondary income receivable</i>	3 897	4 448	4 925	5 165	5 574	6 092	6 640	6 869	7 236
Total gross income	32 364	32 427	33 240	34 196	36 013	39 493	43 439	45 755	47 593
Uses of income									
Primary income payable									
Property income payable									
Dwellings and unincorporated enterprises	2 328	2 463	1 959	1 679	1 665	1 997	2 444	2 393	2 225
Consumer debt interest	597	489	325	252	273	364	455	476	430
Total property income payable	2 925	2 951	2 284	1 930	1 939	2 361	2 899	2 869	2 654
Total primary income payable	2 925	2 951	2 284	1 930	1 939	2 361	2 899	2 869	2 654
Secondary income payable									
Income tax payable	4 745	4 570	4 312	4 524	5 032	5 398	6 094	6 537	7 056
Other current taxes on income, wealth, etc.	96	81	107	119	135	134	134	149	172
Social contributions for workers' compensation	285	263	241	288	318	379	403	413	428
Other secondary income payable	805	833	908	963	1 033	1 056	1 151	1 265	1 347
<i>Total secondary income payable</i>	5 931	5 747	5 568	5 894	6 518	6 967	7 782	8 364	9 003
Total income payable	8 855	8 699	7 853	7 825	8 457	9 329	10 681	11 233	11 657
Gross disposable income	23 509	23 728	25 387	26 371	27 556	30 164	32 758	34 522	35 936
Final consumption expenditure	19 389	20 702	21 991	23 522	25 295	26 746	28 514	29 204	30 998
Net saving plus consumption of fixed capital(a)	4 120	3 026	3 396	2 850	2 261	3 418	4 244	5 317	4 938
Total use of gross income	32 364	32 427	33 240	34 196	36 013	39 493	43 439	45 755	47 593

(a) Net saving plus consumption of fixed capital is derived as a balancing item.

	1989-90	1990-91	1991-92	1992-93	1993-94	1994-95	1995-96	1996-97	1997-98
	\$m	\$m	\$m	\$m	\$m	\$m	\$m	\$m	\$m
Income									
Primary income receivable									
Compensation of employees	4 125	4 382	4 425	4 460	4 449	4 788	5 064	5 209	5 304
Gross operating surplus—dwellings owned by persons	511	577	614	654	687	716	763	846	892
Gross mixed income	1 149	1 096	1 087	1 017	1 060	1 101	1 177	1 170	1 227
Property income receivable	1 186	1 229	992	902	782	926	1 029	948	898
<i>Total primary income receivable</i>	6 971	7 284	7 118	7 033	6 978	7 531	8 033	8 173	8 321
Secondary income receivable									
Social benefits receivable									
Workers' compensation	45	62	74	94	109	126	136	142	146
Social assistance benefits	773	878	990	1 072	1 152	1 192	1 295	1 351	1 354
Current transfers to non-profit institutions	102	119	137	160	167	191	201	198	206
Other secondary income receivable	244	265	258	245	276	314	328	308	365
<i>Total secondary income receivable</i>	1 163	1 325	1 460	1 571	1 705	1 823	1 959	1 999	2 071
Total gross income	8 134	8 610	8 577	8 604	8 682	9 354	9 993	10 172	10 392
Uses of income									
Primary income payable									
Property income payable									
Dwellings and unincorporated enterprises	487	544	413	376	359	422	537	473	426
Consumer debt interest	144	118	79	55	57	84	111	120	116
Total property income payable	631	661	492	431	416	506	649	592	542
Total primary income payable	631	661	492	431	416	506	649	592	542
Secondary income payable									
Income tax payable	1 115	1 146	1 063	1 086	1 133	1 180	1 279	1 373	1 421
Other current taxes on income, wealth, etc.	24	23	32	32	36	40	43	46	49
Social contributions for workers' compensation	48	66	68	89	99	122	133	139	144
Other secondary income payable	224	233	253	266	287	290	310	334	349
<i>Total secondary income payable</i>	1 411	1 468	1 416	1 473	1 555	1 632	1 765	1 892	1 963
Total income payable	2 042	2 129	1 908	1 905	1 971	2 138	2 413	2 484	2 504
Gross disposable income	6 092	6 480	6 669	6 700	6 712	7 217	7 580	7 688	7 888
Final consumption expenditure	4 976	5 498	5 797	6 059	6 369	6 540	6 893	7 118	7 477
Net saving plus consumption of fixed capital(a)	1 116	982	872	641	343	677	687	570	411
Total use of gross income	8 134	8 610	8 577	8 604	8 682	9 354	9 993	10 172	10 392

(a) Net saving plus consumption of fixed capital is derived as a balancing item.

	1989-90	1990-91	1991-92	1992-93	1993-94	1994-95	1995-96	1996-97	1997-98
	\$m	\$m	\$m	\$m	\$m	\$m	\$m	\$m	\$m
Income									
Primary income receivable									
Compensation of employees	1 958	1 991	2 102	2 039	2 211	2 510	2 650	2 891	3 048
Gross operating surplus—dwellings owned by persons	178	200	217	224	232	250	273	305	330
Gross mixed income	306	260	299	252	327	334	400	456	411
Property income receivable	237	248	214	180	177	236	271	262	252
<i>Total primary income receivable</i>	<i>2 679</i>	<i>2 699</i>	<i>2 832</i>	<i>2 695</i>	<i>2 947</i>	<i>3 330</i>	<i>3 594</i>	<i>3 914</i>	<i>4 041</i>
Secondary income receivable									
Social benefits receivable									
Workers' compensation	24	23	29	34	36	37	36	34	35
Social assistance benefits	151	177	217	231	252	278	305	315	318
Current transfers to non-profit institutions	73	87	93	112	128	137	162	163	182
Other secondary income receivable	88	97	94	90	102	118	125	122	147
<i>Total secondary income receivable</i>	<i>336</i>	<i>384</i>	<i>434</i>	<i>467</i>	<i>518</i>	<i>570</i>	<i>629</i>	<i>634</i>	<i>682</i>
Total gross income	3 015	3 082	3 266	3 161	3 465	3 900	4 223	4 549	4 723
Uses of income									
Primary income payable									
Property income payable									
Dwellings and unincorporated enterprises	109	117	99	75	84	115	145	137	126
Consumer debt interest	50	30	21	15	17	24	30	29	23
Total property income payable	159	147	119	90	101	140	176	166	149
Total primary income payable	159	147	119	90	101	140	176	166	149
Secondary income payable									
Income tax payable	415	448	421	429	455	492	531	618	670
Other current taxes on income, wealth, etc.	6	6	9	10	11	11	12	15	16
Social contributions for workers' compensation	26	24	27	32	33	36	35	33	34
Other secondary income payable	80	84	91	97	104	107	118	130	139
<i>Total secondary income payable</i>	<i>527</i>	<i>562</i>	<i>548</i>	<i>568</i>	<i>603</i>	<i>646</i>	<i>696</i>	<i>796</i>	<i>859</i>
Total income payable	686	709	668	658	705	786	871	962	1 008
Gross disposable income	2 329	2 374	2 598	2 503	2 760	3 114	3 352	3 586	3 715
Final consumption expenditure	1 797	1 978	2 102	2 255	2 323	2 564	2 831	2 824	3 076
Net saving plus consumption of fixed capital(a)	532	396	496	248	437	550	521	762	639
Total use of gross income	3 015	3 082	3 266	3 161	3 465	3 900	4 223	4 549	4 723

(a) Net saving plus consumption of fixed capital is derived as a balancing item.

	1989-90	1990-91	1991-92	1992-93	1993-94	1994-95	1995-96	1996-97	1997-98
	\$m	\$m	\$m	\$m	\$m	\$m	\$m	\$m	\$m
Income									
Primary income receivable									
Compensation of employees	4 623	4 983	5 124	5 412	5 838	6 210	6 576	7 001	7 184
Gross operating surplus—dwellings owned by persons	578	619	684	754	780	794	797	819	844
Gross mixed income	483	586	530	571	596	695	643	536	565
Property income receivable	1 339	1 338	1 108	1 013	1 064	1 331	1 389	1 280	1 206
<i>Total primary income receivable</i>	<i>7 023</i>	<i>7 526</i>	<i>7 446</i>	<i>7 750</i>	<i>8 278</i>	<i>9 030</i>	<i>9 405</i>	<i>9 636</i>	<i>9 799</i>
Secondary income receivable									
Social benefits receivable									
Workers' compensation	95	70	82	89	91	92	107	108	112
Social assistance benefits	301	354	401	465	511	544	611	627	631
Current transfers to non-profit institutions	107	118	150	159	169	186	202	226	231
Other secondary income receivable	152	168	166	159	177	205	215	204	240
<i>Total secondary income receivable</i>	<i>656</i>	<i>710</i>	<i>799</i>	<i>873</i>	<i>948</i>	<i>1 026</i>	<i>1 136</i>	<i>1 165</i>	<i>1 214</i>
Total gross income	7 678	8 236	8 244	8 622	9 227	10 056	10 541	10 801	11 013
Uses of income									
Primary income payable									
Property income payable									
Dwellings and unincorporated enterprises	405	419	292	287	299	352	444	400	374
Consumer debt interest	133	88	70	48	54	75	93	92	81
Total property income payable	538	507	362	335	353	427	538	492	455
Total primary income payable	538	507	362	335	353	427	538	492	455
Secondary income payable									
Income tax payable	1 269	1 380	1 232	1 229	1 330	1 382	1 514	1 645	1 683
Other current taxes on income, wealth, etc.	16	17	25	27	30	31	31	34	35
Social contributions for workers' compensation	102	74	75	84	83	89	105	106	110
Other secondary income payable	138	147	162	170	183	186	200	218	229
<i>Total secondary income payable</i>	<i>1 525</i>	<i>1 618</i>	<i>1 494</i>	<i>1 510</i>	<i>1 626</i>	<i>1 688</i>	<i>1 850</i>	<i>2 003</i>	<i>2 057</i>
Total income payable	2 063	2 126	1 855	1 846	1 979	2 115	2 388	2 495	2 511
Gross disposable income	5 616	6 111	6 389	6 776	7 248	7 941	8 153	8 306	8 502
Final consumption expenditure	3 734	4 198	4 553	4 886	5 165	5 335	5 548	5 733	6 150
Net saving plus consumption of fixed capital(a)	1 882	1 913	1 836	1 890	2 083	2 606	2 605	2 573	2 352
Total use of gross income	7 678	8 236	8 244	8 622	9 227	10 056	10 541	10 801	11 013

(a) Net saving plus consumption of fixed capital is derived as a balancing item.

	1989-90	1990-91	1991-92	1992-93	1993-94	1994-95	1995-96	1996-97	1997-98
	\$m	\$m	\$m	\$m	\$m	\$m	\$m	\$m	\$m
Income									
Primary income receivable									
Compensation of employees	184 479	192 303	195 903	202 842	212 359	227 066	242 383	258 898	270 176
Gross operating surplus—dwellings owned by persons	30 244	32 781	33 908	34 829	36 057	37 886	40 671	44 076	46 451
Gross mixed income	44 238	40 772	40 391	43 624	44 959	46 539	51 158	52 024	54 217
Property income receivable	53 884	52 972	43 690	38 701	36 688	44 606	49 978	47 313	44 849
<i>Total primary income receivable</i>	<i>312 845</i>	<i>318 828</i>	<i>313 892</i>	<i>319 996</i>	<i>330 063</i>	<i>356 097</i>	<i>384 190</i>	<i>402 311</i>	<i>415 693</i>
Secondary income receivable									
Social benefits receivable									
Workers' compensation	3 464	3 626	3 981	4 115	4 071	4 544	4 814	4 965	5 100
Social assistance benefits	24 729	29 003	33 601	36 441	39 373	40 602	43 572	46 065	46 281
Current transfers to non-profit institutions	4 352	4 690	5 242	5 818	6 442	7 218	8 108	8 558	9 951
Other secondary income receivable	9 429	10 306	10 100	9 558	10 596	12 245	12 998	12 419	14 798
<i>Total secondary income receivable</i>	<i>41 974</i>	<i>47 625</i>	<i>52 924</i>	<i>55 932</i>	<i>60 482</i>	<i>64 609</i>	<i>69 492</i>	<i>72 007</i>	<i>76 130</i>
Total gross income	354 819	366 453	366 816	375 928	390 545	420 706	453 682	474 318	491 823
Uses of income									
Primary income payable									
Property income payable									
Dwellings and unincorporated enterprises	23 947	25 203	19 740	17 705	16 573	20 235	23 906	22 541	21 287
Consumer debt interest	7 515	5 761	3 712	2 551	2 684	3 644	4 569	4 621	4 399
Total property income payable	31 462	30 964	23 452	20 256	19 257	23 879	28 475	27 162	25 686
Total primary income payable	31 462	30 964	23 452	20 256	19 257	23 879	28 475	27 162	25 686
Secondary income payable									
Income tax payable	49 931	50 156	46 830	47 527	50 570	54 634	60 603	66 278	70 615
Other current taxes on income, wealth, etc.	1 032	900	1 208	1 372	1 544	1 600	1 604	1 761	1 921
Social contributions for workers' compensation	3 720	3 859	3 663	3 889	3 704	4 414	4 717	4 846	5 019
Other secondary income payable	8 400	8 756	9 533	10 086	10 830	11 010	11 915	13 048	13 799
<i>Total secondary income payable</i>	<i>63 083</i>	<i>63 671</i>	<i>61 234</i>	<i>62 874</i>	<i>66 648</i>	<i>71 658</i>	<i>78 839</i>	<i>85 933</i>	<i>91 354</i>
Total income payable	94 545	94 635	84 686	83 130	85 905	95 537	107 314	113 095	117 040
Gross disposable income	260 274	271 818	282 130	292 798	304 640	325 169	346 368	361 223	374 783
Final consumption expenditure	217 075	232 238	243 996	255 066	265 952	282 395	301 571	312 935	332 311
Net saving plus consumption of fixed capital(a)	43 199	39 580	38 134	37 732	38 688	42 774	44 797	48 288	42 472
Total use of gross income	354 819	366 453	366 816	375 928	390 545	420 706	453 682	474 318	491 823

(a) Net saving plus consumption of fixed capital is derived as a balancing item.

	1989-90	1990-91	1991-92	1992-93	1993-94	1994-95	1995-96	1996-97	1997-98
	\$m	\$m	\$m	\$m	\$m	\$m	\$m	\$m	\$m
NEW SOUTH WALES									
Gross value of agricultural production	7 638	6 894	6 143	6 258	6 996	6 462	7 659	8 803	8 474
Subsidies not included in GVP	110	109	135	124	149	154	219	227	227
less Production valuation adjustment	-75	-14	16	-83	-5	45	-97	-135	-177
less Production costs other than wages and consumption of fixed capital	3 483	3 782	3 777	3 590	3 967	4 116	4 493	4 951	4 979
<i>Total agricultural factor income</i>	<i>4 340</i>	<i>3 235</i>	<i>2 485</i>	<i>2 875</i>	<i>3 183</i>	<i>2 455</i>	<i>3 482</i>	<i>4 214</i>	<i>3 899</i>
Taxes less subsidies on production and imports	308	563	302	265	268	261	167	179	213
Gross agricultural product at market prices	4 648	3 798	2 787	3 140	3 451	2 716	3 649	4 393	4 112
less Compensation of employees, consumption of fixed capital, net rent and interest paid	2 628	2 456	2 414	2 216	2 266	2 571	2 651	2 485	2 480
less Taxes less subsidies on production and imports	308	563	302	265	268	261	167	179	213
Agricultural income	1 712	779	71	659	917	-116	831	1 729	1 419
VICTORIA									
Gross value of agricultural production	5 652	5 000	5 102	5 595	6 066	5 495	6 732	6 520	6 600
Subsidies not included in GVP	76	76	79	83	92	99	109	111	112
less Production valuation adjustment	-41	-5	8	-45	—	34	-47	-30	-51
less Production costs other than wages and consumption of fixed capital	2 498	2 551	2 479	2 609	2 681	2 844	3 055	3 090	3 112
<i>Total agricultural factor income</i>	<i>3 271</i>	<i>2 530</i>	<i>2 694</i>	<i>3 114</i>	<i>3 477</i>	<i>2 716</i>	<i>3 833</i>	<i>3 571</i>	<i>3 651</i>
Taxes less subsidies on production and imports	238	329	186	196	207	197	182	176	193
Gross agricultural product at market prices	3 509	2 859	2 880	3 310	3 684	2 913	4 015	3 747	3 844
less Compensation of employees, consumption of fixed capital, net rent and interest paid	1 806	1 604	1 565	1 654	1 619	1 718	1 845	1 874	1 865
less Taxes less subsidies on production and imports	238	329	186	196	207	197	182	176	193
Agricultural income	1 465	926	1 129	1 460	1 858	998	1 988	1 697	1 786
QUEENSLAND									
Gross value of agricultural production	5 256	5 006	4 672	5 009	5 699	5 778	5 738	6 076	5 955
Subsidies not included in GVP	91	90	95	95	114	139	134	166	171
less Production valuation adjustment	-21	-3	2	-17	1	11	-16	-34	-43
less Production costs other than wages and consumption of fixed capital	2 295	2 487	2 425	2 493	2 709	3 042	2 952	3 413	3 460
<i>Total agricultural factor income</i>	<i>3 073</i>	<i>2 612</i>	<i>2 340</i>	<i>2 628</i>	<i>3 103</i>	<i>2 864</i>	<i>2 936</i>	<i>2 863</i>	<i>2 709</i>
Taxes less subsidies on production and imports	66	108	38	48	29	-12	35	15	21
Gross agricultural product at market prices	3 139	2 720	2 378	2 676	3 132	2 852	2 971	2 878	2 730
less Compensation of employees, consumption of fixed capital, net rent and interest paid	2 086	1 935	1 809	1 819	1 926	2 129	2 204	2 230	2 226
less Taxes less subsidies on production and imports	66	108	38	48	29	-12	35	15	21
Agricultural income	987	677	531	809	1 177	735	732	633	483
SOUTH AUSTRALIA									
Gross value of agricultural production	2 785	2 036	2 305	2 359	2 449	2 626	3 413	3 164	3 464
Subsidies not included in GVP	44	43	66	54	57	67	71	72	77
less Production valuation adjustment	-31	-4	22	-51	-4	42	-52	-48	-85
less Production costs other than wages and consumption of fixed capital	1 307	1 271	1 334	1 356	1 301	1 526	1 679	1 674	1 722
<i>Total agricultural factor income</i>	<i>1 553</i>	<i>812</i>	<i>1 015</i>	<i>1 108</i>	<i>1 209</i>	<i>1 125</i>	<i>1 857</i>	<i>1 610</i>	<i>1 904</i>
Taxes less subsidies on production and imports	40	107	26	27	21	6	32	11	5
Gross agricultural product at market prices	1 593	919	1 041	1 135	1 230	1 131	1 889	1 621	1 909
less Compensation of employees, consumption of fixed capital, net rent and interest paid	888	835	761	783	705	800	905	929	916
less Taxes less subsidies on production and imports	40	107	26	27	21	6	32	11	5
Agricultural income	665	-23	254	325	504	325	952	681	988

	1989-90	1990-91	1991-92	1992-93	1993-94	1994-95	1995-96	1996-97	1997-98
	\$m	\$m	\$m	\$m	\$m	\$m	\$m	\$m	\$m
WESTERN AUSTRALIA									
Gross value of agricultural production	3 657	2 849	2 972	3 282	3 557	4 060	4 748	4 516	4 599
Subsidies not included in GDP	58	58	101	86	98	127	108	131	143
less Production valuation adjustment	-60	-8	51	-124	-17	149	-125	-134	-242
less Production costs other than wages and consumption of fixed capital	1 938	1 950	1 829	1 923	2 009	2 235	2 461	2 608	2 628
<i>Total agricultural factor income</i>	<i>1 837</i>	<i>965</i>	<i>1 193</i>	<i>1 569</i>	<i>1 663</i>	<i>1 803</i>	<i>2 520</i>	<i>2 173</i>	<i>2 356</i>
Taxes less subsidies on production and imports	61	193	40	42	58	40	59	20	13
Gross agricultural product at market prices	1 898	1 158	1 233	1 611	1 721	1 843	2 579	2 193	2 369
less Compensation of employees, consumption of fixed capital, net rent and interest paid	1 187	1 064	1 002	1 007	1 004	1 113	1 161	1 198	1 193
less Taxes less subsidies on production and imports	61	193	40	42	58	40	59	20	13
Agricultural income	650	-99	191	562	659	690	1 359	975	1 163
TASMANIA									
Gross value of agricultural production	657	566	520	567	637	609	629	732	740
Subsidies not included in GDP	9	9	10	10	10	11	12	14	15
less Production valuation adjustment	-5	-1	-1	-1	1	2	-3	3	-1
less Production costs other than wages and consumption of fixed capital	277	285	272	272	290	307	319	353	357
<i>Total agricultural factor income</i>	<i>394</i>	<i>291</i>	<i>259</i>	<i>306</i>	<i>356</i>	<i>311</i>	<i>325</i>	<i>390</i>	<i>399</i>
Taxes less subsidies on production and imports	16	31	16	13	14	15	13	11	9
Gross agricultural product at market prices	410	322	275	319	370	326	338	401	408
less Compensation of employees, consumption of fixed capital, net rent and interest paid	269	245	248	260	239	246	269	288	286
less Taxes less subsidies on production and imports	16	31	16	13	14	15	13	11	9
Agricultural income	125	46	11	46	117	65	56	102	113
NORTHERN TERRITORY									
Gross value of agricultural production	176	146	140	159	272	246	287	290	228
Subsidies not included in GDP	2	2	4	3	7	5	5	5	5
less Production valuation adjustment	—	—	—	—	—	—	—	—	—
less Production costs other than wages and consumption of fixed capital	46	43	40	51	96	88	88	94	92
<i>Total agricultural factor income</i>	<i>132</i>	<i>105</i>	<i>104</i>	<i>111</i>	<i>183</i>	<i>163</i>	<i>204</i>	<i>201</i>	<i>141</i>
Taxes less subsidies on production and imports	2	2	1	3	-3	1	1	1	1
Gross agricultural product at market prices	134	107	105	114	180	164	205	202	142
less Compensation of employees, consumption of fixed capital, net rent and interest paid	38	35	53	54	48	48	51	56	57
less Taxes less subsidies on production and imports	2	2	1	3	-3	1	1	1	1
Agricultural income	94	70	51	57	135	115	153	145	84
AUSTRALIA									
Gross value of agricultural production	25 821	22 497	21 854	23 229	25 676	25 276	29 206	30 101	30 060
Subsidies not included in GDP	390	387	490	455	527	602	658	726	750
less Production valuation adjustment	-233	-35	98	-321	-24	283	-340	-378	-599
less Production costs other than wages and consumption of fixed capital	11 844	12 369	12 156	12 294	13 053	14 158	15 047	16 183	16 350
<i>Total agricultural factor income</i>	<i>14 600</i>	<i>10 550</i>	<i>10 090</i>	<i>11 711</i>	<i>13 174</i>	<i>11 437</i>	<i>15 157</i>	<i>15 022</i>	<i>15 059</i>
Taxes less subsidies on production and imports	731	1 333	609	594	594	508	489	413	455
Gross agricultural product at market prices	15 331	11 883	10 699	12 305	13 768	11 945	15 646	15 435	15 514
less Compensation of employees, consumption of fixed capital, net rent and interest paid	8 902	8 174	7 852	7 793	7 807	8 625	9 086	9 060	9 023
less Taxes less subsidies on production and imports	731	1 333	609	594	594	508	489	413	455
Agricultural income	5 698	2 376	2 238	3 918	5 367	2 812	6 071	5 962	6 036

EXPLANATORY NOTES

INTRODUCTION

1 This publication contains State and Territory estimates of gross domestic product (referred to as gross state product (GSP)) and its components, in current price and chain volume terms, for the years 1989–90 to 1997–98. Where ‘State’, is referred to in the text, it also encompasses the two Territories. State estimates are also provided for many other national accounting aggregates. The estimates in this publication are consistent with those published for Australia in the 1997–98 issue of *Australian System of National Accounts* (ABS Cat. no. 5204.0).

2 State estimates are essentially a dissection of the Australian estimates contained in ABS Cat. no. 5204.0. While it is possible in some cases to build up estimates using the same data sources as those used for the Australian estimates, it is quite often necessary to derive dissections using a variety of allocators. These may be directly related to the aggregate being allocated (for example, economic survey data) or only indirectly related (for example, population and household income distributions).

CONCEPTUAL BASIS

3 In this issue, a number of changes have been introduced, including the implementation of a revised international standard for national accounting (the *System of National Accounts, 1993* (SNA93)) and the replacement of constant price estimates by chain volume measures. SNA93 was produced by five international organisations involved in the use of economic statistics and the promotion of international statistical standards—United Nations, Organisation for Economic Co-operation and Development, International Monetary Fund, World Bank and Commission of the European Communities. It was developed after a long review process in which the Australian Bureau of Statistics (ABS), along with other national statistical agencies, was extensively involved.

4 While national estimates are based on the concepts and conventions embodied in SNA93, no such detailed standard is available for sub-national (regional/State) accounts. In the main, the national concepts are applicable to State accounts, but there remain a number of conceptual and measurement issues that either do not apply or are insignificant at the national level. Most problems arise for the Transport and storage, Communication services, and Finance and insurance industries, and in the treatment of central government. In such cases, conventions need to be established which reflect data availability and/or the needs of users.

ESTIMATES OF GSP AND ITS COMPONENTS

5 Estimates of GSP in current prices are produced by summing factor incomes, i.e. compensation of employees, gross operating surplus (GOS) and gross mixed income (GMI), plus taxes less subsidies on production and imports. While wages and salaries can be readily collected by State, this is not always the case for the other components of compensation of employees or for GOS plus GMI, which often cannot be measured satisfactorily within business accounting systems at the individual location. Most of the ABS economic collections which provided data for the estimates in this publication have used the ‘management unit’ as their basic collection unit. A management unit is the largest unit within an enterprise group (a group of legal entities under common ownership and control) which controls its productive activities and for which accounts are kept. The operations of some management units cut across State borders, and conventions have to be adopted in order to allocate GOS plus GMI to States.

6 For the Transport and storage and Communication services industries, estimates of GOS plus GMI by State can be substantially affected by the conceptual basis adopted for allocation. For example, in the case of the modal

EXPLANATORY NOTES *continued*

transport industries (i.e. all transport industries except Services to transport), possible ways of attributing production could include tonne (or person) kilometres travelled in a State; economic activity attributed to the base of operations only; or a mixture of both. As State economic activity for interstate modal transport activities cannot be uniquely defined, it may even be preferable that they should be regarded as extra-territorial and excluded entirely from State production. However, the approach adopted in this publication is to use activity indicators to allocate interstate transport services to States.

7 Numerous data sources are used to apportion Australia-level GOS plus GMI to States. Where available, economic survey data are used to apportion GOS for corporations. For those industries for which economic survey data are not available, a variety of allocators is used to extrapolate or estimate State dissections of GOS. Indicators include State details of wages and salaries, employment, household final consumption expenditure, movements in unincorporated enterprises' GMI, freight shipped from Australian ports, and airport passenger embarkations/disembarkations (the latter two indicators are specific to the transport industry). Taxation statistics are used to apportion GMI for non-agricultural unincorporated enterprises in some industries, and economic survey data are used for other industries. Production-based estimates of agricultural GOS plus GMI are derived using the same data sources and methodology as are used for the Australian estimates. Although the GOS of State and local government non-financial corporations is directly available from the ABS public finance system, GOS for Commonwealth Government non-financial corporations is allocated mainly using indirect indicators.

8 While State by industry estimates of wages and salaries are obtained from the same data sources as those used for the Australian estimates, the estimates of the other components of compensation of employees are essentially allocations of the Australian total. State by industry estimates of employers' superannuation contributions are derived using wages and salaries by State by industry as an allocator. State by industry estimates of workers compensation premiums are based on labour costs data collected by the ABS. It should be noted that there is a minor difference between compensation of employees as published in the total factor income tables and as published in the household income accounts for both Australian and State estimates. The difference arises in situations where a household supplies labour to a production establishment that is in a different domestic territory (State/country) from the household.

9 Estimates of taxes less subsidies on production and imports are derived by adding values for taxes received and subsidies paid by State and local governments and the Commonwealth Government. Data are available from the ABS public finance system, although Commonwealth Government values are not generally available by State. Indicators are used to allocate sales tax, excise tax, customs duties and major subsidies to the State where the economic activity took place.

STATE EXPENDITURE ESTIMATES

10 In addition to estimates of GSP and their income components, this publication contains State estimates for a number of expenditure components. The difference between the sum of these components and GSP is known as the balancing item. The balancing item reflects: changes in inventories; international trade in services; interstate trade in goods and services; and the expenditure statistical discrepancy.

11 State estimates of household final consumption expenditure and private gross fixed capital formation are derived largely from the same sources used for

the Australia-level estimates. In the case of household final consumption expenditure, data sources for major components such as household goods, dwelling rent, purchase of motor vehicles, fares, and purchases of gas, electricity and fuel are available by State. Some components of expenditure on recreation and culture rely on the extrapolation and interpolation of less frequent Household Expenditure Survey data. Where actual data are not available, indirect indicators such as household disposable income are used to allocate the Australia-level estimate.

12 State estimates of private gross fixed capital formation on dwellings and other buildings and structures are derived using data from the ABS Building Activity Survey and the Engineering Construction Survey, while expenditure on equipment is derived from the Survey of Private New Fixed Capital Expenditure. Ownership transfer costs are derived from data supplied by the various State Stamp Duty Offices, ABS surveys of real estate agents and lawyers, and various other data such as the number of real estate property transfers by State. Essentially, these are the same data sources used to prepare the Australia-level estimates.

13 State estimates for capital formation on livestock are based on data from the ABS Agricultural Census, the Survey of Livestock Slaughtering and Australian Bureau of Agriculture and Resource Economics surveys. State estimates of exploration expenditure are derived from the ABS quarterly Survey of Actual and Expected Private Mineral Exploration. State estimates of capital expenditure on software and artistic originals are based on a variety of allocators, including some indirect indicators.

14 Final expenditures of State and local governments can be readily allocated by State, and the same public finance source that is used to derive Australian estimates is also used to derive State estimates.

15 The treatment of national government final expenditures in regional accounting is rather problematic. National government includes the Commonwealth Government and the universities, with the major allocation difficulties arising from the Commonwealth Government component. Alternative treatments are to attribute final expenditures to the region in which the expenditure was incurred, or to the region in which the beneficiaries reside, or even to consider the Commonwealth Government consumer unit as extraterritorial and therefore to exclude it from all regions. For practical reasons the first approach has been adopted in this publication, although it still required extensive use of indirect indicators. An implication is that a large proportion of the consumption of Commonwealth Government services is included in State final demand (SFD) for the Australian Capital Territory, increasing the balancing item for that Territory. If data had been available to allocate Commonwealth final consumption expenditure to end users, the balancing item for the Australian Capital Territory would be a much smaller negative because the provision of the services would be regarded as an interstate export instead. Estimates for Commonwealth Government expenditures in the States on both an annual and quarterly basis therefore have to be treated with considerable caution. The wages and salaries component of Commonwealth Government final consumption expenditure was directly apportioned to States using data from the ABS Survey of Employment and Earnings and information supplied by the Department of Defence. Expenditures on goods and services classified to defence were allocated according to population, while non-defence purchases were allocated according to Commonwealth general government employment by State.

EXPLANATORY NOTES *continued*

16 For Commonwealth general government gross fixed capital formation, Australia-level estimates were first subdivided into expenditure on other buildings and structures, and expenditure on machinery and equipment. The Australia-level other buildings and structures component has generally been allocated to States, based on Commonwealth Government construction expenditures by State as an indicator. Expenditure on machinery and equipment has been allocated using Commonwealth general government employment by State. State estimates of capital expenditure on intangible assets are based on a variety of allocators, including some indirect indicators. The current method used for the allocation of Commonwealth expenditures to States is presently under review. This is because some sources of indicator data are no longer available and because the use of some indicators no longer appears appropriate. Consideration is also being given to incorporating the allocation of some expenditures to the region in which the beneficiaries reside (e.g. personal benefits payments).

17 For Commonwealth public corporation gross fixed capital formation, a variety of allocators has been applied at the individual corporation level. Direct allocation was possible in a few cases where corporations operated wholly in one State. For some corporations State-level direct indicators were available from either the ABS Engineering Construction Survey or from published accounts. For other corporations, indirect allocations were used—for example, purchases of ships were allocated using general freight activity through ports in each State.

18 Separate State details of exports and imports (international trade) of goods, in both current price and chain volume terms, are provided in this publication. Detailed current price estimates of goods on a recorded trade basis at the two-digit level of the Standard Industrial Trade Classification, Revision 3 (SITC Rev3) are used to produce chain volume measures of this component. The exports data are on the basis of State of origin, that is, the State in which the final stage of manufacture or production occurs. For most exports this should correspond to the required basis for State allocation, that is, the State of final resident ownership. There is an assumption that the national deflators will provide a reasonable measure of change in price at the State level. Revaluation at the two-digit (division) level of the SITC Rev3 is a compromise giving a reasonable level of disaggregation by commodity type without increasing the magnitude of the revaluation exercise too significantly. There are a very limited number of cases where more specific deflators have been used to replace the national deflator at the SITC Rev3 division level. This is true in cases where the composition of a particular division is known to be very variable between States, and the division includes commodities with price movements which deviate significantly from the division average. Mineral and agricultural commodities are likely to be significant in this regard.

19 The current price exports estimates differ from those published in *International Merchandise Trade, Australia* (ABS Cat. no. 5422.0). Re-exports, which are not available on a State basis in the latter publication, have been allocated to the States and included in the State figures in this publication. However, those commodities subject to a confidentiality restriction, and which are not available by State in the trade publication, are also excluded from the State export figures here.

20 For imports, a similar approach has been adopted to that employed in the derivation of current price and chain volume measures for exports (see paragraph 19 above). The level of revaluation corresponds broadly to the commodity sub-group level of the balance of payments merchandise imports

EXPLANATORY NOTES *continued*

end-use classification of imports, that is, two-digit Broad Economic Category by three-digit level of the SITC Rev3. These data are on the basis of the State in which the imports were released from Australian Customs Service control. In most cases this will correspond to the State of initial resident ownership, which is the required basis of State allocation. No information is available on which to base an adjustment for goods released from Customs' control in a State other than that in which their owner resides.

21 In this issue, the State estimates of exports and imports of goods have, for the first time, been benchmarked to the national estimate.

CHAIN VOLUME MEASURES OF GSP

22 The chain volume measures of GSP presented in this publication are derived by revaluing current-price, income-based estimates of GSP, using deflators which are compiled using the available data on the composition of expenditures on State production and movements in associated prices. For a more complete description of why this approach has been adopted, and details of the data sources and the methods used, see the Technical Note on page vi of the 1993–94 issue of this publication. References to 'constant price estimates' in the Technical Note should be replaced by 'chain volume measures'.

23 A lack of data means that it is not possible to derive estimates at the State level equivalent to the aggregate Australian expenditure-based estimates of gross domestic product. While the components of SFD and estimates of international merchandise trade by State are available, there are no complete estimates of international trade in services; interstate trade in goods and services; or changes in inventories. Hence, an expenditure-based GSP volume measure cannot be derived by a similar methodology to that adopted at the Australian level.

24 In order to make maximum use of the incomplete expenditure data and limited price data available at the State level, an approach is adopted which essentially involves deriving the best possible current price and chain volume estimates of subsets of expenditure that encompass most, but not all, of GSP. For each State, current price estimates of identified components of international and interstate trade and changes in inventories are combined with the current price estimates of SFD and, similarly, the chain volume measures of those components are combined with the chain volume measures of SFD. The quotient derived by dividing the aggregate chain volume measure into the aggregate current price estimates is a Paasche (current-weighted) price index. It is this price index which is used to revalue the current price estimates of GSP.

25 It is crucial to identify separately those components for which the deflators deviate significantly from the average, since the method adopted effectively attributes the weighted average deflator to the unidentified components. There is an assumption underlying the approach adopted in deriving the aggregate State deflators that, because of price competition, the available national price indicators are reasonably indicative at the State level. This is a less distorting assumption if the price indicators are weighted together at a reasonable level of commodity disaggregation, and implies deriving the current price and chain volume estimates at as fine a level as possible.

26 Despite the fact that as broad a range of information as possible is used in this estimation procedure, the aggregate current price and chain volume estimates of expenditures used in the derivation of the State deflator are not considered to be complete measures. They merely serve to produce the best deflators and therefore the most reliable chain volume measures of GSP that the available data and resources allow. For this reason, they are regarded as experimental estimates.

EXPLANATORY NOTES *continued*

ACCURACY OF ESTIMATES

27 The estimates in this publication represent allocations of Australian estimates published in ABS Cat. no. 5204.0. Therefore, they will reflect any inaccuracies in those estimates as well as inaccuracies introduced by any particular conceptual, methodological and data problems inherent in the allocation of Australian estimates to States. The degree of accuracy and reliability will necessarily be lower than that for the corresponding Australian estimates.

28 Uniform methodologies and consistent data sources have been used for all States. Although there is no reason to expect that there would be any bias in the methodology used, there is some variation in both the quality of data between States (particularly where sample surveys are used) and the sensitivity of estimates to alternative concepts.

29 Detailed industry estimates for the two Territories are likely to be less accurate than those for the States. For example, for the Communication services industry, data for the Australian Capital Territory are available only in combination with New South Wales; a similar problem exists for Communication services data relating to the Northern Territory, which are combined with data for South Australia. The use of indirect allocators to separate the Territories has a far more significant effect on the relative errors for the Australian Capital Territory and the Northern Territory than for New South Wales and South Australia. Where sample surveys are used to collect data, standard errors are often higher for the Territories than for the States.

30 The limitations of ABS sample surveys in producing State estimates are particularly relevant for estimates of private gross fixed capital formation—machinery and equipment. Estimates for each State are derived largely from a quarterly national survey of business. The survey design aims to achieve a high degree of statistical accuracy in the samples in the larger States. However, as the accuracy of the estimates from this survey (in percentage terms) is roughly proportional to the size of the sample, the estimates for the smaller States are generally less accurate than those for the larger States. Hence, the estimates for the Northern Territory, Australian Capital Territory, Tasmania and South Australia are particularly prone to volatile movements.

31 Estimates of GOS plus GMI for the latest year rely on a range of broad activity indicators such as retail turnover, construction work done and persons employed. Therefore, they are subject to revision as more suitable sources, such as taxation statistics and ABS economic survey data, become available.

32 Estimates of taxes less subsidies on production and imports, government final consumption expenditure, and general government and public corporation gross fixed capital formation can be substantially affected by the indicators chosen to apportion the Commonwealth Government component to States. Again, care is required when interpreting these estimates.

33 The incomplete nature of the price and expenditure data available at the State level for the derivation of the GSP deflators, and the generally lower level of accuracy of State data, referred to earlier, mean that there is greater scope for inaccuracy than in comparable estimates at the Australian level. The chain volume measures of GSP are derived measures, calculated by adjusting the current price estimates using specially constructed State deflators. This means that the chain volume measures incorporate the combined effects of the inaccuracies in the current price estimates and those in the deflators. These inaccuracies reflect a number of factors, including higher relative sampling errors; the ‘fuzziness’ of some State data arising from difficulties that businesses and government agencies operate across the country have in allocating their

EXPLANATORY NOTES *continued*

activities by State; and the limited availability of source data on a State basis in a number of areas. The inaccuracies in the component value and price estimates may be compounded or offset in the process of deriving the chain volume measures.

34 In analysing the chain volume measures it is important to recognise the data limitations at the State level and to be aware that the accuracy of the estimates will not be as high as that of the corresponding national estimates. They represent a useful indicator of growth in the volume of State production, but are necessarily affected by the data limitations at the State level. The series are regarded as experimental.

OCCASIONAL PAPERS

35 Occasional papers produced by officers of the ABS report on various aspects of research being undertaken on the national accounts. They are not used for the release of official statistics and do not necessarily reflect the views of the ABS. The following occasional papers are available at all ABS offices:

- *Studies in National Accounting: Current Cost Depreciation and Net Capital Stock*—C. Bailey (1981/1)
- *The Accuracy and Reliability of the Quarterly Australian National Accounts*—A. Johnson (1982/2)
- *State Accounts, Australia: Issues and Experimental Estimates*—S. Burrell, J. Daniel, A. Johnson and R. Walters (1984/4)
- *The Effects of Rebasings the Constant Price Estimates of the Australian National Accounts*—R. Dippelsman (1985/1)
- *Estimates of Depreciation and Capital Stock, Australia*—R. Walters and R. Dippelsman (1985/3)
- *Estimates of Multifactor Productivity, Australia*—C. Aspden (ABS Cat. no. 5233.0)
- *Productivity, Prices, Profits and Pay, 1964-65 to 1989-90*—I. Castles (ABS Cat. no. 5239.0)
- *Unpaid Work and the Australian Economy, 1992* (ABS Cat. no. 5240.0)
- *National Balance Sheets for Australia: Issues and Experimental Estimates, 1989-1992* (ABS Cat. no. 5241.0)

INFORMATION PAPERS

36 Information papers are published by the ABS to provide information on topical issues and developments. The following information papers relating to national accounting issues are available at all ABS offices:

- *Measuring Unpaid Household Work—Issues and Experimental Estimates* (ABS Cat. no. 5236.0)
- *Introduction of Revised International Statistical Standards in ABS Macro-economic Statistics* (ABS Cat. no. 5245.0)
- *Implementation of Revised International Standards in the Australian National Accounts* (ABS Cat. no. 5251.0)
- *Introduction of Chain Volume Measures in the Australian National Accounts* (ABS Cat. no. 5248.0)
- *Upgraded Australian National Accounts* (ABS Cat. no. 5253.0)

RELATED PUBLICATIONS

37 As well as the publications previously referred to, other national accounts publications produced by the ABS which may be of interest are:

- *Australian National Accounts: Input-Output Tables (Commodity Details)* (ABS Cat. no. 5215.0)
- *A Guide to the Australian National Accounts* (ABS Cat. no. 5235.0)

38 Current publications produced by the ABS are listed in the *Catalogue of Publications and Products* (ABS Cat. no. 1101.0). The ABS also issues, on Tuesdays and Fridays, a *Release Advice* (ABS Cat. no. 1105.0) which lists publications to be released in the next few days. The Catalogue and Release Advice are available from any ABS office.

SELF-HELP ACCESS TO STATISTICS

PHONE Call 1900 986 400 for the latest statistics on CPI, Labour Force, Earnings, National Accounts, Balance of Payments and other topics (call cost is 75c per minute).

INTERNET <http://www.abs.gov.au>

LIBRARY A range of ABS publications is available from public and tertiary libraries Australia wide. Contact your nearest library to determine whether it has the ABS statistics you require.

WHY NOT SUBSCRIBE?

PHONE +61 1300 366 323

FAX +61 3 9615 7848

CONTACTING THE ABS

ABS provides a range of services, including: a telephone inquiry service; information consultancy tailored to your needs; survey, sample and questionnaire design; survey evaluation and methodological reviews; and statistical training.

<i>INQUIRIES</i>	<i>By phone</i>	<i>By fax</i>
Canberra	02 6252 6627	02 6253 1404
Sydney	02 9268 4611	02 9268 4668
Melbourne	03 9615 7755	03 9615 7798
Brisbane	07 3222 6351	07 3222 8283
Perth	08 9360 5140	08 9360 5955
Adelaide	08 8237 7400	08 8237 7566
Hobart	03 6222 5800	03 6222 5995
Darwin	08 8943 2111	08 8981 1218

POST Client Services, ABS, PO Box 10, Belconnen, ACT 2616

EMAIL client.services@abs.gov.au



2522000007974

ISSN 0819-7423

RRP \$22.00