



1997-98

4315.0

APPARENT CONSUMPTION OF SELECTED FOODSTUFFS

AUSTRALIA
PRELIMINARY

EMBARGO: 11:30AM (CANBERRA TIME) MON 23 NOV 1998

CONTENTS

	page
Notes	2
Summary of findings	3
TABLES	
1 Total apparent consumption of selected foodstuffs	6
2 Apparent per capita consumption of selected foodstuffs	8
ADDITIONAL INFORMATION	
Explanatory notes	10

- For further information about these and related statistics, contact Joanne Gibbons on Canberra 02 6252 5300, or any ABS office shown on the back cover of this publication.

NOTES

ABOUT THIS PUBLICATION

This publication contains preliminary statistics on the apparent consumption of selected food items for the year ended 30 June 1998, together with comparative data for earlier years. Final and more detailed statistics and explanations of the methods employed to estimate apparent consumption are published in *Apparent Consumption of Foodstuffs, Australia* (Cat. no. 4306.0).

REVISIONS TO FIGURES

The figures shown in this publication have been revised where necessary and as a consequence may not agree with similar data shown in previous publications.

SYMBOLS AND OTHER USAGES

ABS	Australian Bureau of Statistics
kg	kilogram
L	litres
L al	litres alcohol
n.e.i.	not elsewhere included
p	preliminary
r	figure or series revised since previous issue
t	tonnes
—	nil or rounded to zero

ROUNDING

Where figures have been rounded, discrepancies may occur between sums of the component items and totals.

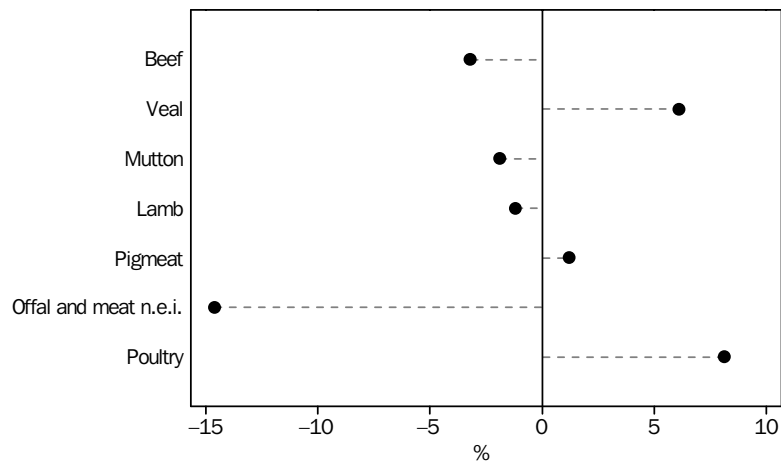
W. McLennan
Australian Statistician

SUMMARY OF FINDINGS

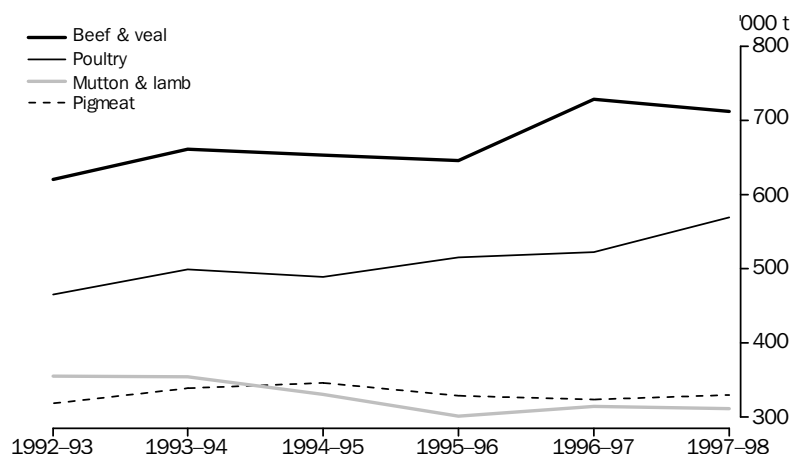
MEAT AND MEAT PRODUCTS

The preliminary results for 1997–98 show that the apparent consumption of meat and meat products fell by 1.8% compared with the previous year, to 74.2 kg per capita. The major contributors to this decline were beef, down 3.2% to 36.6 kg and offal and meat n.e.i., down 14.6% to 1.2 kg per capita. Increases were recorded for pigmeat which rose by 1.2% to 17.8 kg, and veal, up 6.1% to 1.9 kg per capita. The per capita consumption of total meat products has declined by 3.2% when compared with 1992–93. Lamb, mutton, and offal and meat n.e.i. all recorded significant falls in per capita consumption since 1992–93. However, beef and veal showed increases of 8.7% and 12.9% respectively, over the same period. The apparent consumption of poultry rose 8.1% to 30.7 kg per capita in 1997–98. When compared with 1992–93, the per capita consumption of poultry has increased by 16.0%.

Percentage change between 1996–97 and 1997–98



The total amount of meat and meat products available for consumption fell 1.3% in 1997–98 when compared with the previous year, but since 1992–93 it has increased by 2.9%. Beef and veal available for consumption has increased 14.6% over the same period, but the amounts of mutton and lamb available for consumption have fallen by 22.1% and 6.0% respectively. The amount of offal and meat n.e.i. available for consumption in 1997–98 was approximately a half of that available in 1992–93. Poultry available for consumption also increased over this period by 22.3%.



SUMMARY OF FINDINGS *continued*

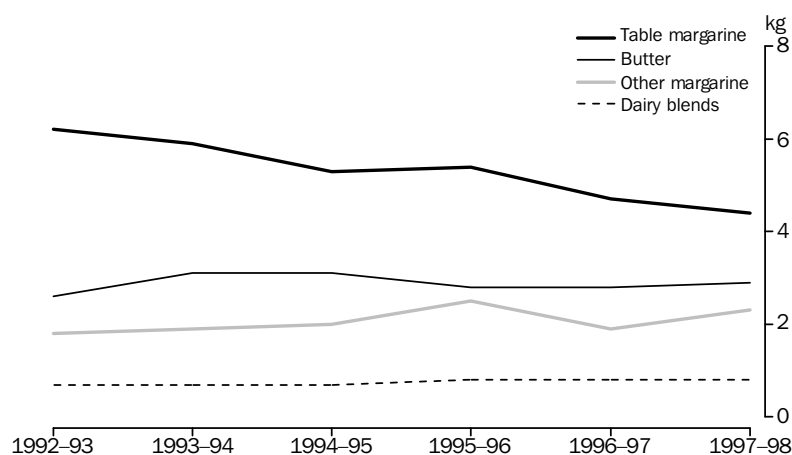
DAIRY PRODUCTS

The apparent per capita consumption of market milk fell marginally to 103.7 litres in 1997–98. Milk intake has increased by 2.6% since 1992–93, when consumption was 101.1 litres per capita. Full cream condensed milk fell 5.6% to 2.9 kg per capita in 1997–98 while skim condensed milk rose 4.2% to 1.2 kg per capita, significantly lower than the 3.5 kg per capita consumed in 1992–93. The apparent per capita consumption of full cream powdered milk fell by nearly a third to 0.8 kg. Powdered skim milk also fell, by 19.6% to 1.8 kg per capita. The consumption of infants' and invalids' food remained steady at 1.0 kg per capita. The per capita consumption of cheese remained steady at 10.9 kg in 1997–98, but has risen 20.0% since 1992–93.

OILS AND FATS

Butter consumption rose marginally to 2.9 kg per capita, and was 13.8% greater than the 2.6 kg per capita consumed in 1992–93. The per capita consumption of dairy blends remained steady at 0.8 kg per capita.

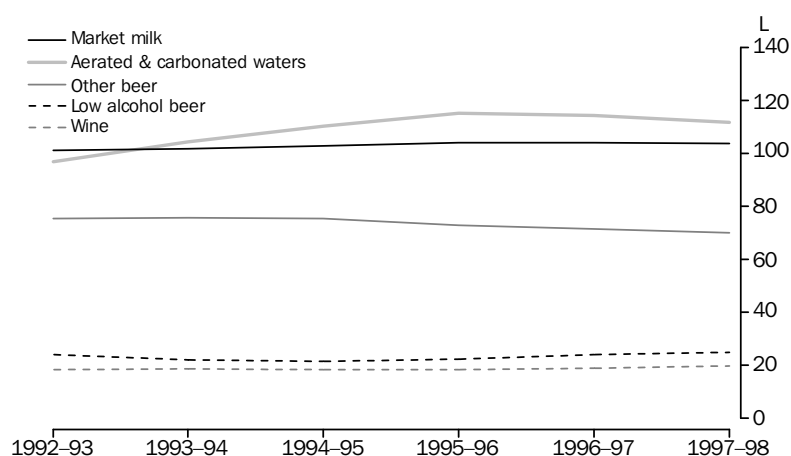
The apparent per capita consumption of table margarine fell 5.9% in 1997–98 to 4.4 kg; this was 28.2% down on consumption in 1992–93. Other margarine rose 20.4% in 1997–98 to 2.3 kg per capita, after falling 22.8% to 1.9 kg per capita in 1996–97. Total margarine rose marginally to 6.7 kg in 1997–98. This compares with a fall of 16.3% to 6.6 kg per capita in 1996–97. Since 1992–93, consumption of margarine has declined by 15.7%.



BEVERAGES

The apparent consumption of low alcohol beer rose 3.6% to 24.9 litres per capita in 1997–98. Other beer fell 2.0% to 70.1 litres per capita. Overall, beer consumption showed a marginal decline with consumption of 95.0 litres per capita. In 1997–98, the consumption of wine rose 3.5% to 19.7 litres per capita. Since 1992–93, the consumption of low alcohol beer has increased by 3.6% while other beer has fallen 7.2% and wine has increased 7.4%.

SUMMARY OF FINDINGS *continued*



The per capita intake of tea remained steady at 0.8 kg per capita in 1997-98. However, coffee consumption fell marginally to 2.3 kg per capita. In the longer term, tea intake has declined by 22.5% since 1992-93, while coffee consumption per capita has increased 4.2%. The per capita consumption of aerated, carbonated and mineral waters fell to 111.7 litres per capita, down 2.3% when compared with 1996-97, but up 15.1% when compared with 1992-93.

ALCOHOL CONTENT

The trends in consumption of beer and wine are partially reflected in the apparent per capita consumption of alcohol (expressed in terms of alcohol content). The apparent per capita consumption of alcohol from low alcohol beer increased by 3.6% to 0.77 litres alcohol in 1997-98 and since 1992-93 has increased 8.1%. Alcohol consumed in other beer fell 2.0% to 3.34 litres alcohol and alcohol consumed in wine rose 4.8% to 2.26 litres alcohol per capita. The consumption of alcohol in spirits rose 8.6% to 1.39 litres alcohol per capita in 1997-98 and this was 19.4% up on intake in 1992-93. The total per capita consumption of alcohol rose 2.3% from 7.59 litres alcohol in 1996-97 to 7.77 litres alcohol in 1997-98.

ALCOHOL INTAKE BY LEGAL AGE DRINKERS

If the population of those 18 years and over ('legal drinking age') is used in calculating the apparent consumption of alcoholic beverages, the movements are of a similar magnitude and in the same direction as when the total population is used. Consumption of beer was 126.4 litres per person aged 18 and over, while wine consumption was 26.2 litres.

AVAILABLE FOR CONSUMPTION.....							Change 1997-98 on 1996-97
Foodstuffs	1992-93	1993-94	1994-95	1995-96	1996-97	1997-98p	
	t	t	t	t	t	t	%
Meat and meat products							
Meat(a)							
Beef	591 505	631 193	626 921	621 104	r696 492	677 874	-2.7
Veal	29 132	30 618	26 421	25 570	r32 478	34 674	6.8
Total beef and veal	620 637	661 811	653 341	646 673	r728 970	712 548	-2.3
Lamb	213 948	204 719	212 905	201 895	r203 922	201 195	-1.3
Mutton	141 271	149 863	117 635	99 530	r110 735	110 074	-0.6
Pigmeat	319 279	339 170	346 623	328 799	r323 919	329 893	1.8
Total meat	1 295 135	1 355 564	1 330 505	1 276 989	r1 367 546	1 353 709	-1.0
Offal and meat n.e.i.	41 469	42 324	33 984	27 333	r25 554	21 954	-14.1
Total meat and meat products	1 336 603	1 397 888	1 364 489	1 304 231	r1 393 100	1 375 664	-1.3
Poultry							
Poultry (dressed weight)(b)	465 670	499 590	489 374	r515 538	r523 320	569 296	8.8
	'000 L	'000 L	'000 L	'000 L	'000 L	'000 L	%
Dairy products							
Market milk(c)	1 777 519	1 810 200	1 848 900	1 895 429	1 919 874	1 921 200	0.1
	t	t	t	t	t	t	%
Dairy products							
Condensed, concentrated and evaporated milk							
Full cream sweetened and unsweetened	40 014	66 377	51 408	r35 334	r56 004	53 186	-5.0
Skim	60 918	65 315	42 553	38 654	r21 126	22 150	4.8
Powdered milk							
Full cream(c)	15 750	14 743	16 402	r18 300	r21 700	15 500	-28.6
Skim(c)	34 363	42 791	39 424	r40 300	r41 900	33 900	-19.1
Infants' and invalids' food	20 509	19 679	21 601	22 574	r19 217	17 981	-6.4
Cheese(c)(d)	15 922	170 820	184 291	191 564	r200 258	201 408	0.6
Total (converted to milk solids fat and non-fat)	417 443	445 288	446 481	r454 048	r467 938	454 557	-2.9
Oils and fats							
Butter(e)	45 576	55 373	55 655	r51 738	r52 500	54 652	4.1
Dairy spreads (product weight)(c)	12 706	11 700	12 121	13 808	r14 533	14 014	-3.6
Margarine							
Table	108 365	105 141	95 721	98 704	r86 588	81 995	-5.3
Other	31 538	34 324	35 237	44 614	r34 897	42 257	21.1
Total margarine	139 903	139 465	130 958	143 318	r121 485	124 252	2.3
Total (fat content)(f)	335 334	344 000	339 715	r350 075	r336 120	348 778	3.8
Beverages							
Tea	17 283	18 493	16 579	16 094	r15 155	14 115	-6.9
Coffee(g)	39 257	40 478	39 211	44 545	r43 545	43 129	-1.0

(a) Expressed in terms of carcass equivalent weight.

(b) Excludes Tasmania, the Northern Territory and the Australian Capital Territory.

(c) Source: Australian Dairy Corporation.

(d) Natural equivalent weight.

(e) Includes butter equivalent of butter oil, butter concentrate and ghee.

(f) Includes an estimate for vegetable oils and other fats.

(g) Coffee and coffee products in terms of roasted coffee.

AVAILABLE FOR CONSUMPTION.....							Change 1997-98 on 1996-97
Foodstuffs	1992-93	1993-94	1994-95	1995-96	1996-97	1997-98 ^p	
	'000 L	'000 L	'000 L	'000 L	'000 L	'000 L	%
Beverages							
Aerated, carbonated and mineral waters(a)	1 707 180	1 856 487	1 985 100	2 095 820	2 107 574	2 070 501	-1.8
Beer							
Low alcohol	423 102	393 166	384 062	407 232	r443 103	461 912	4.2
Other	1 327 269	1 347 296	1 355 321	r1 326 718	r1 317 154	1 298 534	-1.4
Total beer	1 750 371	1 740 462	1 739 384	r1 733 950	r1 760 257	1 760 445	—
Wine	321 870	330 424	329 929	332 191	349 868	364 436	4.2
	'000 L al	'000 L al	'000 L al	'000 L al	'000 L al	'000 L al	%
Alcohol content(b)							
Beer							
Low alcohol	12 523	11 927	11 859	12 597	r13 687	14 261	4.2
Other	63 191	64 476	64 743	63 118	r62 848	61 975	-1.4
Total beer	75 714	76 403	76 602	75 715	r76 535	76 236	-0.4
Wine	36 874	37 751	37 805	38 122	39 753	41 901	5.4
Spirits	20 511	24 284	23 208	24 631	r23 620	25 813	9.3
Total alcohol content	133 099	138 438	137 615	138 467	r139 907	143 949	2.9

(a) Includes bulk pre-mix and post-mix concentrates in terms of drink equivalent.

(b) The alcoholic content of beer has been calculated on the basis of excise data. The alcohol content of wine is calculated using factors from 10.6% by volume to 17.9%.

APPARENT PER CAPITA CONSUMPTION.....							Change 1997-98 on 1996-97
Foodstuffs	1992-93	1993-94	1994-95	1995-96	1996-97	1997-98p	
	kg	kg	kg	kg	kg	kg	%
Meat and meat products							
Meat(a)							
Beef	33.6	35.5	34.9	34.1	r37.8	36.6	-3.2
Veal	1.7	1.7	1.5	1.4	1.8	1.9	6.1
Total beef and veal	35.3	37.3	36.4	35.5	r39.6	38.4	-2.8
Lamb	12.2	11.5	11.9	11.1	11.1	10.9	-1.9
Mutton	8.0	8.4	6.5	5.5	r6.0	5.9	-1.2
Pigmeat	18.2	19.1	19.3	18.1	r17.6	17.8	1.2
Total meat	73.6	76.3	74.1	70.2	r74.2	73.0	-1.6
Offal and meat n.e.i.	2.4	2.4	1.9	1.5	1.4	1.2	-14.6
Total meat and meat products	76.0	78.7	76.0	71.7	r75.6	74.2	-1.8
Poultry							
Poultry (dressed weight)(b)	26.5	28.1	27.2	28.3	28.4	30.7	8.1
	L	L	L	L	L	L	%
Dairy products							
Market milk(c)	101.1	101.9	102.9	104.2	104.2	103.7	-0.5
	kg	kg	kg	kg	kg	kg	%
Dairy products							
Condensed, concentrated and evaporated milk							
Full cream sweetened and unsweetened	2.3	3.7	2.9	r1.9	r3.0	2.9	-5.6
Skim	3.5	3.7	2.4	r2.1	r1.1	1.2	4.2
Powdered milk							
Full cream(c)	0.9	0.8	0.9	r1.0	r1.2	0.8	-29.0
Skim(c)	2.0	2.4	2.2	2.2	2.3	1.8	-19.6
Infants' and invalids' food	1.2	1.1	1.2	1.2	r1.0	1.0	-7.0
Cheese(c)(d)	9.1	9.6	10.3	10.5	r10.9	10.9	—
Total (converted to milk solids fat and non-fat)	23.7	25.1	24.9	r25.0	r25.4	24.5	-3.4
Oils and fats							
Butter(e)	2.6	3.1	3.1	r2.8	r2.8	2.9	3.5
Dairy spreads (product weight)(c)	0.7	0.7	0.7	0.8	r0.8	0.8	-4.1
Margarine							
Table	6.2	5.9	5.3	5.4	4.7	4.4	-5.9
Other	1.8	1.9	2.0	2.5	1.9	2.3	20.4
Total margarine	8.0	7.9	7.3	7.9	6.6	6.7	1.7
Total (fat content)(f)	19.1	19.4	18.9	19.2	r18.2	18.8	3.2
Beverages							
Tea	1.0	1.0	0.9	0.9	0.8	0.8	-7.4
Coffee(g)	2.2	2.3	2.2	r2.4	r2.4	2.3	-1.5

(a) Expressed in terms of carcass equivalent weight.

(b) Excludes Tasmania, the Northern Territory and the Australian Capital Territory.

(c) Source: Australian Dairy Corporation.

(d) Natural equivalent weight.

(e) Includes butter equivalent of butter oil, butter concentrate and ghee.

(f) Includes an estimate for vegetable oils and other fats.

(g) Coffee and coffee products in terms of roasted coffee.

APPARENT PER CAPITA CONSUMPTION.....							Change 1997-98 on 1996-97
Foodstuffs	1992-93	1993-94	1994-95	1995-96	1996-97	1997-98p	
	L	L	L	L	L	L	%
Beverages							
Aerated, carbonated and mineral waters(a)	97.1	104.5	110.5	115.2	114.4	111.7	-2.3
Beer							
Low alcohol	24.1	22.1	21.4	22.4	r24.0	24.9	3.6
Other	75.5	75.8	75.5	72.9	r71.5	70.1	-2.0
Total beer	99.5	98.0	96.8	95.3	r95.5	95.0	-0.6
Wine	18.3	18.6	18.4	18.3	19.0	19.7	3.5
	L al	L al	L al	L al	L al	L al	%
Alcohol content(b)							
Beer							
Low alcohol	0.71	0.67	0.66	0.69	0.74	0.77	3.6
Other	3.59	3.63	3.60	3.47	r3.41	3.34	-2.0
Total beer	4.31	4.30	4.26	4.16	r4.15	4.11	-1.0
Wine	2.10	2.12	2.10	2.10	2.16	2.26	4.8
Spirits	1.17	1.37	1.29	1.35	1.28	1.39	8.6
Total alcohol content	7.57	7.79	7.66	7.61	r7.59	7.77	2.3
	L	L	L	L	L	L	%
Beer(c)							
Low alcohol	r32.4	r29.7	r28.6	r29.9	32.0	33.2	3.6
Other	r101.5	r101.8	r100.9	r97.3	r95.2	93.3	-2.1
Total beer	r133.9	r131.4	r129.5	r127.2	r127.3	126.4	-0.6
Wine(c)	24.6	r25.0	24.6	24.4	25.3	26.2	3.5

(a) Includes bulk pre-mix and post-mix concentrates in terms of drink equivalent.

(b) The alcoholic content of beer has been calculated on the basis of excise data. The alcohol content of wine is calculated using factors from 10.6% by volume to 17.9%.

(c) Based on population 18 years and over.

EXPLANATORY NOTES

INTRODUCTION

1 In general, the method employed to estimate apparent consumption in Australia of each of the various foodstuffs included in this publication is as follows:

Apparent consumption =
Commercial production
+ Estimated home production
+ Imports
+ Opening stocks
– Exports
– Usage for processed food
– Non-food usage
– Wastage
– Closing stocks

Per capita consumption =
Apparent consumption divided by the mean resident population
for that period.

2 The per capita apparent consumption figures shown in this publication have been calculated using the mean resident population, which is compiled according to the place of usual residence of the population and includes an estimate for those persons temporarily overseas.

3 The following mean resident population figures (year ended 30 June basis) have been used for the calculation of per capita apparent consumption shown in this publication:

1992–93	17,587,411
1993–94	17,766,184
1994–95	17,961,429
1995–96	18,194,890
1996–97	18,425,552
1997–98	18,535,339

RELATED PUBLICATIONS

4 Users may also wish to refer to the following related publication *Apparent Consumption of Foodstuffs, Australia* (Cat. no. 4306.0).

5 Current publications produced by the Australian Bureau of Statistics (ABS) are listed in the *Catalogue of Publications and Products, Australia* (Cat. no. 1101.0). The ABS also issues, on Tuesdays and Fridays, a *Release Advice* (Cat. no. 1105.0) which lists publications to be released in the next few days. The Catalogue and Release Advice are available from any ABS office.

SELF-HELP ACCESS TO STATISTICS

<i>PHONE</i>	Call 1900 986 400 for the latest statistics on CPI, Labour Force, Earnings, National Accounts, Balance of Payments and other topics. (Call cost is 75c per minute)
<i>INTERNET</i>	http://www.abs.gov.au
<i>LIBRARY</i>	A range of ABS publications is available from public and tertiary libraries Australia wide. Contact your nearest library to determine whether it has the ABS statistics you require.

WHY NOT SUBSCRIBE?

<i>PHONE</i>	+61 1300 366 323
<i>FAX</i>	+61 3 9615 7848

CONTACTING THE ABS

ABS provides a range of services, including: a telephone inquiry service; information consultancy tailored to your needs; survey, sample and questionnaire design; survey evaluation and methodological reviews; and statistical training.

<i>INQUIRIES</i>	<i>By phone</i>	<i>By fax</i>
Canberra	02 6252 6627	02 6253 1404
Sydney	02 9268 4611	02 9268 4668
Melbourne	03 9615 7755	03 9615 7798
Brisbane	07 3222 6351	07 3222 6283
Perth	08 9360 5140	08 9360 5955
Adelaide	08 8237 7400	08 8237 7566
Hobart	03 6222 5800	03 6222 5995
Darwin	08 8943 2111	08 8981 1218

<i>POST</i>	Client Services, ABS, PO Box 10, Belconnen, ACT 2616
<i>EMAIL</i>	client.services@abs.gov.au



2431500007974
ISSN 0158-2496

RRP \$15.00