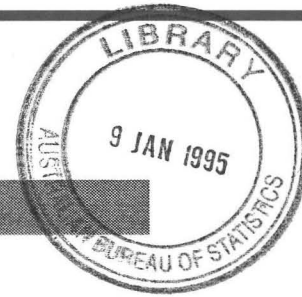


RETAIL TRADE

AUSTRALIA

EMBARGOED UNTIL 11:30AM MON 9 JANUARY 1995



NOVEMBER KEY FIGURES

TREND ESTIMATES

Turnover at current prices (in \$ millions)	Oct 94	Nov 94	% change
	9 254.3	9 288.0	0.4
	Nov 93	Nov 94	% change
	8 626.2	9 288.0	7.7

SEASONALLY ADJUSTED ESTIMATES

Turnover at current prices (in \$ millions)	Oct 94	Nov 94	% change
	9 347.2	9 225.4	-1.3
	Nov 93	Nov 94	% change
	8 686.0	9 225.4	6.2

NOVEMBER KEY POINTS

TREND ESTIMATES

- Growth in the trend estimate of retail turnover has weakened slightly to 0.4 per cent for November 1994, following increases of 0.7 per cent and 0.8 per cent in October and September 1994 respectively.
- Growth in recent trend estimates has been revised downwards slightly, following a 1.3 per cent fall in the seasonally adjusted estimate of retail turnover between October and November 1994.
- Growth in retail turnover trend estimates over the past year (November 1994 over November 1993) was 7.7 per cent.

INDUSTRY ANALYSIS

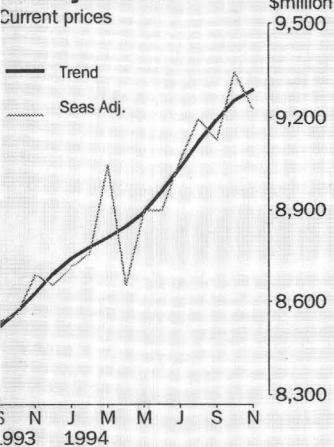
- Clothing and soft good retailing continues to show strong growth in turnover.
- Growth in the Hospitality and service industry, while easing slightly, is still relatively strong.
- The trend estimates for Household good retailing have been in decline for the last three months.
- Trend growth for Food retailing has eased over the last three months, while the trend in turnover for Department stores has flattened out.

STATE ANALYSIS

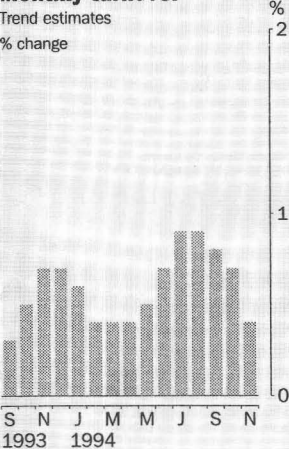
- The weaker growth in the Australian trend estimates over recent months is also reflected in the movements recorded in all State trend estimates.
- All States, apart from Tasmania, recorded some trend growth in retail turnover in November. In Tasmania, retail sales have been reducing steadily since June.

TAKE CARE!
Trend estimates are revised as new monthly data become available.

Monthly turnover



Monthly turnover



INQUIRIES

- For further information about these and related statistics, contact Bill Powell on 06 252 6132. For information about constant price estimates contact Leon Ting on 06 252 6807.

RETAIL TRADE NOTES

FORTHCOMING ISSUES

ISSUE	RELEASE DATE
December 1994	1 February 1995
January 1995	2 March 1995
February 1995	30 March 1995

CHANGES IN THIS ISSUE

There are no changes in this issue.

SAMPLING ERRORS

Standard errors for the Australian estimates (original) for November 1994 contained in this publication are:

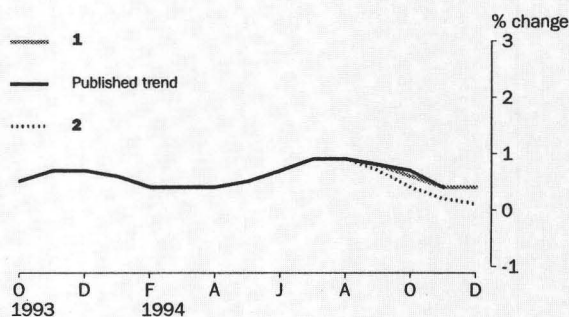
DATA SERIES	PUBLISHED NUMBER	STANDARD ERROR
Level of retail turnover (\$m)	9 550.1	79.1
Change from October to November (\$m)	226.2	31.5
% change from October to November	2.4	0.3

For more information see the Explanatory notes, paragraphs 12-15, or contact Bill Powell on 06 252 6132.

WHAT IF?

The most recent trend estimates published in this release are likely to be revised when next month's seasonally adjusted estimates become available. To assist readers of this publication in analysing retail trends, the effect of two possible scenarios on the previous trend estimates of the percentage change in retail turnover are presented below.

- 1 The December seasonally adjusted estimate of retail turnover is 1.0% higher than the November estimate.
- 2 The December seasonally adjusted estimate of retail turnover is 1.0% lower than the November estimate.



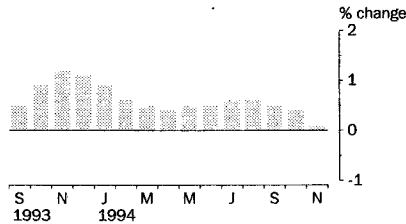
TAKE CARE!
Trend estimates are subject to revision as subsequent data becomes available. See Explanatory note 8.

TIM SKINNER
ACTING AUSTRALIAN STATISTICIAN

STATE TRENDS

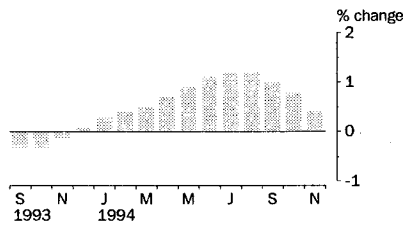
MONTHLY PERCENTAGE CHANGE IN TREND ESTIMATES

NEW SOUTH WALES



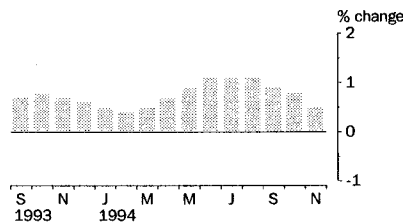
In mid 1994, New South Wales was showing trend growth of around 0.5 per cent in retail turnover. This has eased over the last two months. In November, growth was only 0.1 per cent.

VICTORIA



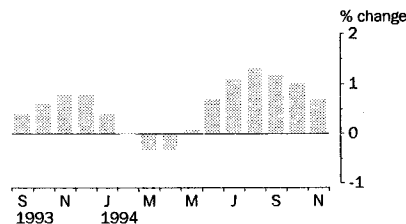
Victorian trend estimates show a sharp fall in the trend growth rate. From June to September 1994, monthly growth of 1.0 per cent or more was recorded. Growth in November was 0.4 per cent.

QUEENSLAND



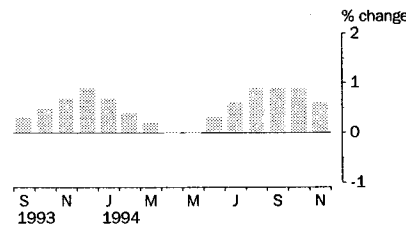
The strong growth evident in the middle months of 1994 has eased. In November growth in retail turnover was a moderate 0.5 per cent.

SOUTH AUSTRALIA



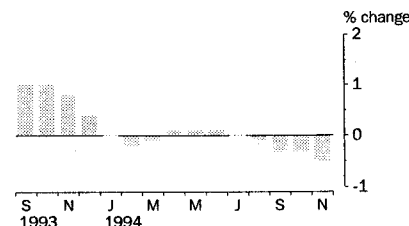
Growth in the trend estimates for South Australia has eased to 0.7 per cent in November. In the four previous months growth was 1.0 per cent or more each month.

WESTERN AUSTRALIA



After showing monthly growth of 0.9 per cent for each of the months of August, September and October, growth in November 1994 was down slightly to a moderate 0.6 per cent.

TASMANIA

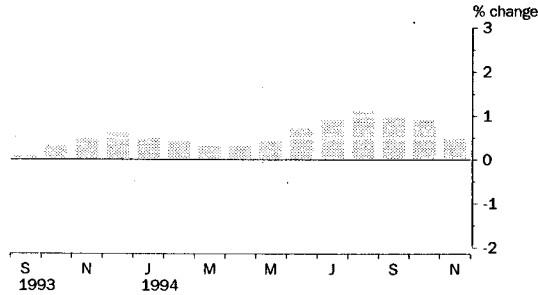


Recent trend estimates of retail turnover have been revised to show a decline over the last four months, following a flat retail turnover trend for the first seven months of 1994.

INDUSTRY TRENDS

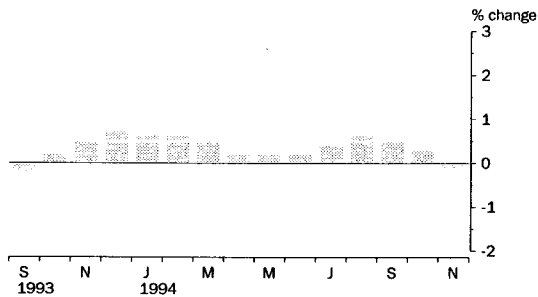
MONTHLY PERCENTAGE CHANGE IN TREND ESTIMATES

FOOD RETAILING



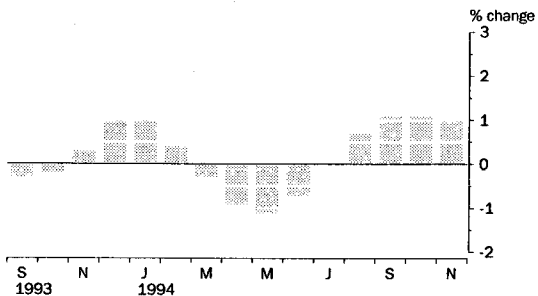
The Food retailing industry group has shown an easing in the trend growth rate. Strong growth of around 1.0 per cent was recorded for each of the four months prior to November, while in November the trend grew by 0.5 per cent.

DEPARTMENT STORES



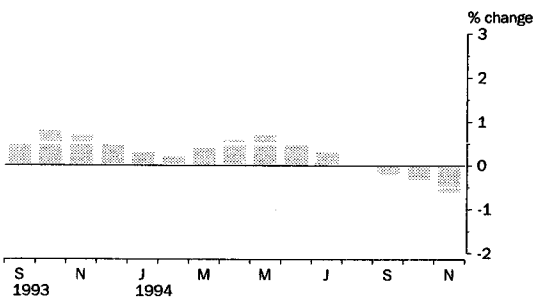
A sharp fall in the seasonally adjusted estimate of retail turnover for November has seen the trend estimates for Department stores flatten out to November 1994.

CLOTHING AND SOFT GOOD RETAILING



This industry group went through a period of decline in retail turnover trend from March to June 1994. However, over the last three months, growth has been around 1.1 per cent per month.

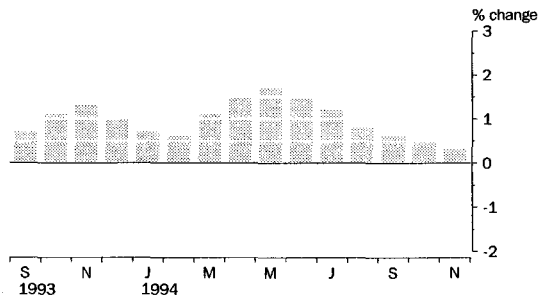
HOUSEHOLD GOOD RETAILING



The trend in Household good retailing has been in decline for each of the last three months with the rate of decline increasing from 0.2 per cent in September to 0.6 per cent in November.

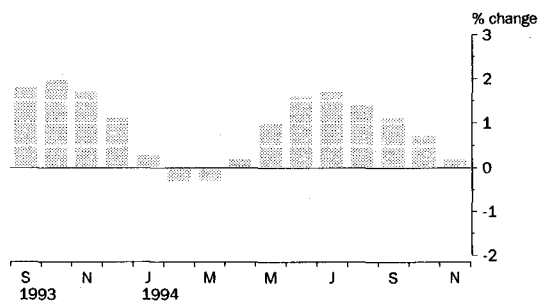
MONTHLY PERCENTAGE CHANGE IN TREND ESTIMATES

RECREATIONAL GOOD RETAILING



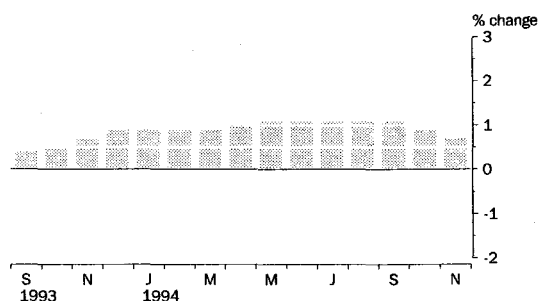
The trend estimates in May 1994 for the Recreational good retailing industry group showed an increase of 1.7 per cent over April. Since then there has been a gradual easing in the growth rate to 0.3 per cent in November 1994.

OTHER RETAILING



The trend in Other retailing has shown a similar pattern to that exhibited by the Recreational good retailing industry. Trend growth has eased over the last four months to 0.2 per cent in November 1994.

HOSPITALITY AND SERVICES



Throughout 1994 this industry group has shown consistently strong growth in retail turnover. Despite a slight weakening in October and November it is still showing relatively strong growth.



RETAIL TURNOVER, By Industry Group¹: All series

Month	Food retailing	Department stores	Clothing and soft good retailing	Household good retailing	Recreational good retailing	Other retailing	Hospitality and services	Total
ORIGINAL (\$ million)								
1993								
September	3 282.7	844.8	615.9	971.1	453.3	776.5	1 411.9	8 356.2
October	3 376.9	887.0	631.1	1 015.6	455.1	806.3	1 489.2	8 661.2
November	3 347.6	970.2	658.9	1 074.0	485.9	863.4	1 504.6	8 904.6
December	3 955.7	1 710.8	957.4	1 354.8	674.4	1 263.4	1 780.3	11 696.8
1994								
January	3 335.0	745.8	610.4	943.1	448.3	729.0	1 480.8	8 292.4
February	3 160.1	664.5	510.4	905.7	450.9	698.2	1 349.7	7 739.5
March	3 569.7	821.6	629.9	999.5	509.3	783.1	1 535.7	8 848.8
April	3 311.0	831.8	658.7	913.2	439.5	743.2	1 498.3	8 395.7
May	3 320.1	908.1	672.4	997.7	469.8	777.7	1 467.4	8 613.2
June	3 335.6	912.9	634.7	1 011.0	478.6	764.9	1 448.3	8 586.0
July	3 466.0	783.1	621.1	998.6	509.2	796.3	1 569.6	8 743.9
August	3 464.5	798.9	598.9	1 055.3	501.9	849.3	1 556.1	8 824.9
September	3 516.2	887.0	634.0	999.0	492.0	870.3	1 583.5	8 982.0
October	3 628.1	934.7	655.4	1 022.2	508.3	905.5	1 669.7	9 323.9
November	3 614.8	1 000.8	678.7	1 101.6	561.3	916.1	1 676.8	9 550.1
SEASONALLY ADJUSTED (\$ million)								
1993								
September	3 340.5	891.5	646.7	997.9	459.0	771.3	1 428.8	8 535.7
October	3 330.9	904.8	631.7	998.5	463.0	785.8	1 446.5	8 561.2
November	3 370.8	893.5	649.3	1 012.5	473.1	817.0	1 469.8	8 686.0
December	3 350.7	863.4	652.8	993.4	478.8	837.3	1 477.0	8 653.4
1994								
January	3 369.7	915.0	659.5	1 009.1	478.8	804.0	1 475.6	8 711.6
February	3 409.6	909.9	650.4	1 025.7	476.5	810.6	1 469.4	8 752.3
March	3 532.0	937.2	695.0	1 023.9	492.3	821.6	1 545.7	9 047.6
April	3 313.2	888.6	654.3	991.4	479.3	796.2	1 528.4	8 651.3
May	3 430.6	929.8	642.3	1 039.6	496.6	824.1	1 534.3	8 897.2
June	3 450.1	917.6	621.3	1 044.8	518.5	820.8	1 525.1	8 898.3
July	3 506.8	904.9	635.7	1 031.1	530.1	853.4	1 601.0	9 063.0
August	3 533.4	927.7	655.5	1 067.8	521.6	882.5	1 606.5	9 195.0
September	3 547.7	938.3	659.0	1 024.3	502.3	862.5	1 592.7	9 126.8
October	3 639.2	970.2	661.4	1 015.2	527.6	893.6	1 640.0	9 347.2
November	3 601.8	900.1	671.9	1 032.1	534.2	855.0	1 630.4	9 225.4
TREND ESTIMATES (\$ million)								
1993								
September	3 329.2	884.6	646.2	986.9	458.4	776.1	1 439.1	8 520.5
October	3 338.5	886.2	644.9	994.5	463.6	791.7	1 446.9	8 566.1
November	3 354.4	891.0	646.8	1 001.6	469.7	805.2	1 457.5	8 626.2
December	3 373.0	897.0	653.1	1 007.1	474.6	813.9	1 470.4	8 689.1
1994								
January	3 389.7	902.8	659.8	1 010.6	477.7	816.5	1 483.8	8 740.9
February	3 402.1	908.0	662.7	1 013.1	480.8	814.3	1 496.8	8 777.8
March	3 411.7	912.5	660.6	1 016.8	486.0	812.0	1 510.2	8 809.9
April	3 421.2	914.6	654.5	1 023.3	493.4	813.5	1 524.8	8 845.2
May	3 435.4	916.3	647.0	1 030.4	501.6	821.5	1 541.1	8 893.4
June	3 458.6	918.5	642.4	1 036.0	509.3	834.9	1 558.6	8 958.2
July	3 490.8	922.6	642.4	1 038.7	515.3	849.1	1 576.1	9 035.1
August	3 528.9	927.9	647.0	1 038.7	519.5	861.3	1 593.5	9 116.9
September	3 565.4	932.1	654.1	1 036.2	522.6	870.4	1 610.3	9 191.1
October	3 598.1	934.9	661.6	1 032.8	525.4	876.5	1 625.0	9 254.3
November	3 617.0	933.8	668.3	1 027.1	526.9	878.5	1 636.4	9 288.0

¹ See paragraph 3 of the Explanatory Notes

RETAIL TURNOVER PERCENTAGE CHANGE, By Industry Group¹: All Series

Month	Food retailing	Department stores	Clothing and soft good retailing	Household good retailing	Recreational good retailing	Other retailing	Hospitality and services	Total
ORIGINAL (% change from preceding month)								
1993								
September	2.9	15.9	6.2	5.6	6.4	9.5	3.0	5.4
October	2.9	5.0	2.5	4.6	0.4	3.8	5.5	3.6
November	-0.9	9.4	4.4	5.8	6.8	7.1	1.0	2.8
December	18.2	76.3	45.3	26.1	38.8	46.3	18.3	31.4
1994								
January	-15.7	-56.4	-36.2	-30.4	-33.5	-42.3	-16.8	-29.1
February	-5.2	-10.9	-16.4	-4.0	0.6	-4.2	-8.9	-6.7
March	13.0	23.6	23.4	10.4	13.0	12.2	13.8	14.3
April	-7.2	1.2	4.6	-8.6	-13.7	-5.1	-2.4	-5.1
May	0.3	9.2	2.1	9.3	6.9	4.6	-2.1	2.6
June	0.5	0.5	-5.6	1.3	1.9	-1.6	-1.3	-0.3
July	3.9	-14.2	-2.1	-1.2	6.4	4.1	8.4	1.8
August	0.0	2.0	-3.6	5.7	-1.4	6.7	-0.9	0.9
September	1.5	11.0	5.9	-5.3	-2.0	2.5	1.8	1.8
October	3.2	5.4	3.4	2.3	3.3	4.0	5.4	3.8
November	-0.4	7.1	3.6	7.8	10.4	1.2	0.4	2.4
SEASONALLY ADJUSTED (% change from preceding month)								
1993								
September	1.1	1.6	-0.2	4.0	1.6	2.3	0.2	1.4
October	-0.3	1.5	-2.3	0.1	0.9	1.9	1.2	0.3
November	1.2	-1.2	2.8	1.4	2.2	4.0	1.6	1.5
December	-0.6	-3.4	0.5	-1.9	1.2	2.5	0.5	-0.4
1994								
January	0.6	6.0	1.0	1.6	0.0	-4.0	-0.1	0.7
February	1.2	-0.6	-1.4	1.6	-0.5	0.8	-0.4	0.5
March	3.6	3.0	6.9	-0.2	3.3	1.4	5.2	3.4
April	-6.2	-5.2	-5.9	-3.2	-2.6	-3.1	-1.1	-4.4
May	3.5	4.6	-1.8	4.9	3.6	3.5	0.4	2.8
June	0.6	-1.3	-3.3	0.5	4.4	-0.4	-0.6	0.0
July	1.6	-1.4	2.3	-1.3	2.2	4.0	5.0	1.9
August	0.8	2.5	3.1	3.6	-1.6	3.4	0.3	1.5
September	0.4	1.1	0.5	-4.1	-3.7	-2.3	-0.9	-0.7
October	2.6	3.4	0.4	-0.9	5.0	3.6	3.0	2.4
November	-1.0	-7.2	1.6	1.7	1.3	-4.3	-0.6	-1.3
TREND ESTIMATES (% change from preceding month)								
1993								
September	0.1	-0.2	-0.3	0.5	0.7	1.8	0.4	0.3
October	0.3	0.2	-0.2	0.8	1.1	2.0	0.5	0.5
November	0.5	0.5	0.3	0.7	1.3	1.7	0.7	0.7
December	0.6	0.7	1.0	0.5	1.0	1.1	0.9	0.7
1994								
January	0.5	0.6	1.0	0.3	0.7	0.3	0.9	0.6
February	0.4	0.6	0.4	0.2	0.6	-0.3	0.9	0.4
March	0.3	0.5	-0.3	0.4	1.1	-0.3	0.9	0.4
April	0.3	0.2	-0.9	0.6	1.5	0.2	1.0	0.4
May	0.4	0.2	-1.1	0.7	1.7	1.0	1.1	0.5
June	0.7	0.2	-0.7	0.5	1.5	1.6	1.1	0.7
July	0.9	0.4	0.0	0.3	1.2	1.7	1.1	0.9
August	1.1	0.6	0.7	0.0	0.8	1.4	1.1	0.9
September	1.0	0.5	1.1	-0.2	0.6	1.1	1.1	0.8
October	0.9	0.3	1.1	-0.3	0.5	0.7	0.9	0.7
November	0.5	-0.1	1.0	-0.6	0.3	0.2	0.7	0.4

¹ See paragraph 3 of the Explanatory Notes

RETAIL TURNOVER, By Sub-Group¹: Original

Month	FOOD RETAILING.....				CLOTHING AND SOFT GOOD RETAILING.....				HOUSEHOLD GOOD RETAILING...			
	Super- markets and grocery stores	Takeaway food retailing	Other food retailing	Total	Total Department stores	Clothing retailing	Other clothing related retailing	Total	Furniture and floor covering retailing	Domestic hardware and house- ware retailing	Domestic appliance retailing	Total
(\$ million)												
1993												
September	2 331.6	409.8	541.3	3 282.7	844.8	441.1	174.8	615.9	286.3	197.7	487.1	971.1
October	2 406.9	414.8	555.2	3 376.9	887.0	458.0	173.1	631.1	305.9	218.6	491.1	1 015.6
November	2 368.4	421.4	557.8	3 347.6	970.2	481.1	177.8	658.9	325.6	228.6	519.8	1 074.0
December	2 779.1	477.7	698.9	3 955.7	1 710.8	696.2	261.2	957.4	323.3	298.2	733.3	1 354.8
1994												
January	2 330.9	466.8	537.3	3 335.0	745.8	432.0	178.4	610.4	259.5	193.0	490.6	943.1
February	2 253.4	410.3	496.4	3 160.1	664.5	369.2	141.2	510.4	263.0	193.6	449.1	905.7
March	2 525.3	477.5	566.9	3 569.7	821.6	452.8	177.1	629.9	283.4	213.3	502.8	999.5
April	2 339.5	430.1	541.4	3 311.0	831.8	477.5	181.2	658.7	264.0	190.0	459.2	913.2
May	2 355.0	432.8	532.3	3 320.1	908.1	487.4	185.0	672.4	285.5	197.0	515.2	997.7
June	2 387.5	431.3	516.8	3 335.6	912.9	448.8	185.9	634.7	299.0	188.2	523.8	1 011.0
July	2 464.6	465.2	536.2	3 466.0	783.1	447.2	173.9	621.1	299.5	185.1	514.0	998.6
August	2 469.0	459.2	536.3	3 464.5	798.9	432.5	166.4	598.9	320.6	194.3	540.4	1 055.3
September	2 497.7	467.2	551.3	3 516.2	887.0	457.8	176.2	634.0	306.4	197.5	495.1	999.0
October	2 539.3	491.7	597.1	3 628.1	934.7	473.4	182.0	655.4	301.0	211.3	509.9	1 022.2
November	2 528.8	485.0	601.0	3 614.8	1 000.8	492.2	186.5	678.7	315.5	221.9	564.2	1 101.6
(% change from preceding month)												
1993												
September	3.0	2.6	2.4	2.9	15.9	4.6	10.6	6.2	6.0	2.4	6.7	5.6
October	3.2	1.2	2.6	2.9	5.0	3.8	-1.0	2.5	6.8	10.6	0.8	4.6
November	-1.6	1.6	0.5	-0.9	9.4	5.0	2.7	4.4	6.4	4.6	5.8	5.8
December	17.3	13.4	25.3	18.2	76.3	44.7	46.9	45.3	-0.7	30.4	41.1	26.1
1994												
January	-16.1	-2.3	-23.1	-15.7	-56.4	-37.9	-31.7	-36.2	-19.7	-35.3	-33.1	-30.4
February	-3.3	-12.1	-7.6	-5.2	-10.9	-14.5	-20.9	-16.4	1.3	0.3	-8.5	-4.0
March	12.1	16.4	14.2	13.0	23.6	22.6	25.4	23.4	7.8	10.2	12.0	10.4
April	-7.4	-9.9	-4.5	-7.2	1.2	5.5	2.3	4.6	-6.8	-10.9	-8.7	-8.6
May	0.7	0.6	-1.7	0.3	9.2	2.1	2.1	2.1	8.1	3.7	12.2	9.3
June	1.4	-0.3	-2.9	0.5	0.5	-7.9	0.5	-5.6	4.7	-4.5	1.7	1.3
July	3.2	7.9	3.8	3.9	-14.2	-0.4	-6.5	-2.1	0.2	-1.6	-1.9	-1.2
August	0.2	-1.3	0.0	0.0	2.0	-3.3	-4.3	-3.6	7.0	5.0	5.1	5.7
September	1.2	1.7	2.8	1.5	11.0	5.8	5.9	5.9	-4.4	1.6	-8.4	-5.3
October	1.7	5.2	8.3	3.2	5.4	3.4	3.3	3.4	-1.8	7.0	3.0	2.3
November	-0.4	-1.4	0.7	-0.4	7.1	4.0	2.5	3.6	4.8	5.0	10.6	7.8
(% change from corresponding month of previous year)												
1993												
September	5.7	-8.0	-1.5	2.6	3.0	-2.2	0.7	-1.4	5.7	0.7	9.4	6.4
October	1.6	-8.7	-3.4	-0.6	-1.7	-9.8	-9.1	-9.6	2.3	-4.7	7.0	2.9
November	6.6	-5.9	0.4	3.8	0.2	-1.7	-0.2	-1.3	14.2	-0.6	12.1	9.7
December	7.0	0.8	-2.3	4.5	3.6	-0.8	1.9	-0.1	4.5	0.7	9.7	6.3
1994												
January	1.1	3.5	-4.7	0.4	-2.2	-0.7	-8.8	-3.2	2.3	-10.6	9.7	2.9
February	4.0	3.1	-3.4	2.7	3.3	-2.1	1.6	-1.1	6.0	-1.6	10.9	6.6
March	8.3	16.8	4.3	8.7	8.9	6.6	9.2	7.3	-3.9	-4.7	9.1	2.1
April	-0.5	5.0	-2.8	-0.2	-1.1	5.4	6.7	5.7	2.8	-12.0	6.5	1.0
May	2.1	10.3	-0.5	2.6	0.2	-1.6	2.0	-0.7	-0.2	-3.9	13.0	5.4
June	5.4	11.8	-0.1	5.3	2.9	-8.0	-0.6	-5.9	6.1	0.2	11.3	7.5
July	3.0	16.0	-2.7	3.7	1.5	-7.1	0.0	-5.2	8.1	-1.5	2.4	3.3
August	9.1	14.9	1.5	8.6	9.6	2.6	5.3	3.3	18.7	0.7	18.4	14.7
September	7.1	14.0	1.8	7.1	5.0	3.8	0.8	2.9	7.0	-0.1	1.6	2.9
October	5.5	18.5	7.5	7.4	5.4	3.4	5.1	3.9	-1.6	-3.3	3.8	0.6
November	6.8	15.1	7.7	8.0	3.2	2.3	4.9	3.0	-3.1	-2.9	8.5	2.6

¹ See paragraph 3 of the Explanatory Notes

RETAIL TURNOVER, By Sub-Group¹: Original *continued*

Month	RECREATIONAL GOOD RETAILING.....			OTHER RETAILING.....			HOSPITALITY AND SERVICES.....				Total all industries
	News-paper, book and stationery retailing	Other recreational good retailing	Total	Pharmaceutical cosmetic and toiletry retailing	Other retailing	Total	Hotels and licensed clubs	Cafes and restaurants	Selected services	Total	
(\$ million)											
1993											
September	309.5	143.8	453.3	402.0	374.5	776.5	872.5	405.9	133.5	1 411.9	8 356.2
October	303.0	152.1	455.1	411.3	395.0	806.3	934.2	418.3	136.7	1 489.2	8 661.2
November	318.9	167.0	485.9	423.0	440.4	863.4	931.8	434.1	138.7	1 504.6	8 904.6
December	410.0	264.4	674.4	547.8	715.6	1 263.4	1 097.1	518.7	164.5	1 780.3	11 696.8
1994											
January	317.9	130.4	448.3	387.5	341.5	729.0	939.3	421.5	120.0	1 480.8	8 292.4
February	327.0	123.9	450.9	363.1	335.1	698.2	838.9	394.5	116.3	1 349.7	7 739.5
March	374.8	134.5	509.3	422.5	360.6	783.1	953.8	450.2	131.7	1 535.7	8 848.8
April	310.9	128.6	439.5	407.7	335.5	743.2	951.6	420.4	126.3	1 498.3	8 395.7
May	342.9	126.9	469.8	425.7	352.0	777.7	928.0	414.0	125.4	1 467.4	8 613.2
June	344.0	134.6	478.6	426.0	338.9	764.9	916.9	404.5	126.9	1 448.3	8 586.0
July	362.2	147.0	509.2	442.2	354.1	796.3	970.3	461.9	137.4	1 569.6	8 743.9
August	355.8	146.1	501.9	463.5	385.8	849.3	960.1	462.9	133.1	1 556.1	8 824.9
September	344.5	147.5	492.0	453.6	416.7	870.3	973.8	471.0	138.7	1 583.5	8 982.0
October	353.9	154.4	508.3	445.1	460.4	905.5	1 028.9	488.1	152.7	1 669.7	9 323.9
November	386.4	174.9	561.3	459.1	457.0	916.1	1 032.3	491.6	152.9	1 676.8	9 550.1

(% change from preceding month)											
1993											
September	2.2	16.7	6.4	6.7	12.7	9.5	1.8	5.3	4.4	3.0	5.4
October	-2.1	5.8	0.4	2.3	5.5	3.8	7.1	3.1	2.4	5.5	3.6
November	5.2	9.8	6.8	2.8	11.5	7.1	-0.3	3.8	1.5	1.0	2.8
December	28.6	58.3	38.8	29.5	62.5	46.3	17.7	19.5	18.6	18.3	31.4
1994											
January	-22.5	-50.7	-33.5	-29.3	-52.3	-42.3	-14.4	-18.7	-27.1	-16.8	-29.1
February	2.9	-5.0	0.6	-6.3	-1.9	-4.2	-10.7	-6.4	-3.1	-8.9	-6.7
March	14.6	8.6	13.0	16.4	7.6	12.2	13.7	14.1	13.2	13.8	14.3
April	-17.0	-4.4	-13.7	-3.5	-7.0	-5.1	-0.2	-6.6	-4.1	-2.4	-5.1
May	10.3	-1.3	6.9	4.4	4.9	4.6	-2.5	-1.5	-0.7	-2.1	2.6
June	0.3	6.1	1.9	0.1	-3.7	-1.6	-1.2	-2.3	1.2	-1.3	-0.3
July	5.3	9.2	6.4	3.8	4.5	4.1	5.8	14.2	8.3	8.4	1.8
August	-1.8	-0.6	-1.4	4.8	9.0	6.7	-1.1	0.2	-3.1	-0.9	0.9
September	-3.2	1.0	-2.0	-2.1	8.0	2.5	1.4	1.7	4.2	1.8	1.8
October	2.7	4.7	3.3	-1.9	10.5	4.0	5.7	3.6	10.1	5.4	3.8
November	9.2	13.3	10.4	3.1	-0.7	1.2	0.3	0.7	0.1	0.4	2.4

(% change from corresponding month of previous year)											
1993											
September	-10.5	9.0	-5.1	15.6	3.3	9.3	5.9	-7.5	-2.8	0.9	2.6
October	-10.1	5.0	-5.6	16.5	0.5	8.1	7.3	-5.6	-4.8	2.2	-0.1
November	-9.2	10.8	-3.2	17.2	4.3	10.2	10.1	-1.5	-0.8	5.5	4.1
December	-12.2	18.9	-2.2	28.0	10.3	17.3	10.5	0.1	-6.6	5.5	5.2
1994											
January	-8.5	9.9	-3.8	21.5	3.0	12.1	8.7	-0.7	-10.5	4.1	1.5
February	-9.1	15.8	-3.4	26.1	5.7	15.4	7.9	0.3	-11.2	3.7	3.7
March	5.6	14.2	7.8	20.3	7.9	14.3	12.6	8.0	-4.4	9.5	8.4
April	-1.2	8.2	1.3	15.4	2.5	9.2	8.5	4.2	-6.0	5.9	2.2
May	3.1	12.6	5.5	15.7	4.9	10.6	10.2	2.4	-8.5	6.1	3.8
June	13.3	18.9	14.8	14.7	6.0	10.7	10.4	8.1	-4.1	8.3	5.8
July	14.4	26.0	17.5	16.7	10.3	13.8	10.0	14.5	-0.7	10.2	5.4
August	17.5	18.6	17.8	23.0	16.1	19.8	12.0	20.1	4.1	13.5	11.4
September	11.3	2.6	8.5	12.8	11.3	12.1	11.6	16.0	3.9	12.2	7.5
October	16.8	1.5	11.7	8.2	16.6	12.3	10.1	16.7	11.7	12.1	7.7
November	21.2	4.7	15.5	8.5	3.8	6.1	10.8	13.2	10.2	11.4	7.2

¹ See paragraph 3 of the Explanatory Notes

RETAIL TURNOVER, By State: All Series

Month	New South Wales	Victoria	Queensland	South Australia	Western Australia	Tasmania	Northern Territory	Australian Capital Territory	Australia
-------	-----------------	----------	------------	-----------------	-------------------	----------	--------------------	------------------------------	-----------

ORIGINAL (\$ million)

1993									
September	2 919.1	1 900.4	1 555.5	624.8	875.5	220.5	96.5	163.9	8 356.2
October	3 056.8	1 979.4	1 588.6	651.3	888.0	229.4	94.8	172.9	8 661.2
November	3 138.3	2 048.1	1 614.4	680.7	913.5	239.9	95.0	174.7	8 904.6
December	4 100.9	2 688.7	2 129.2	886.5	1 235.7	308.9	107.5	239.4	11 696.8
1994									
January	2 969.3	1 850.1	1 519.4	628.9	864.8	221.6	80.3	158.0	8 292.4
February	2 748.6	1 743.0	1 390.9	593.1	822.2	211.8	79.1	150.8	7 739.5
March	3 157.9	2 015.0	1 601.3	665.3	908.2	233.6	90.5	177.0	8 848.8
April	2 989.8	1 922.3	1 516.4	629.7	863.6	220.6	86.7	166.6	8 395.7
May	3 080.0	1 966.7	1 559.3	634.6	884.2	225.9	92.7	169.8	8 613.2
June	3 050.1	1 957.6	1 590.4	624.9	886.9	217.1	95.3	163.7	8 586.0
July	3 091.2	1 978.2	1 625.4	646.9	906.6	224.0	105.5	166.1	8 743.9
August	3 136.8	1 997.6	1 656.3	650.0	887.0	220.8	107.6	168.8	8 824.9
September	3 146.1	2 045.8	1 695.4	670.4	927.4	223.2	102.5	171.2	8 982.0
October	3 271.5	2 146.4	1 733.8	700.4	956.8	224.2	109.9	180.9	9 323.9
November	3 365.3	2 187.9	1 762.0	723.5	989.6	233.7	105.7	182.4	9 550.1

SEASONALLY ADJUSTED (\$ million)

1993									
September	2 979.5	1 977.8	1 559.5	641.1	887.1	231.1	92.0	167.6	8 535.7
October	3 033.6	1 954.4	1 559.0	645.5	876.4	231.1	91.8	169.5	8 561.2
November	3 046.3	2 001.9	1 583.8	656.7	897.8	233.9	96.5	169.1	8 686.0
December	3 061.0	1 930.6	1 595.6	660.9	906.1	229.8	92.2	177.1	8 653.4
1994									
January	3 114.8	1 964.4	1 573.7	656.5	909.6	227.7	91.9	173.0	8 711.6
February	3 085.8	1 977.5	1 587.3	675.7	925.8	231.9	93.5	174.9	8 752.3
March	3 230.6	2 055.2	1 645.7	665.7	937.7	236.4	95.1	181.2	9 047.6
April	3 082.9	1 957.0	1 593.7	645.6	886.0	224.5	92.2	169.4	8 651.3
May	3 173.9	2 022.4	1 627.2	653.5	921.0	233.1	94.7	171.4	8 897.2
June	3 154.1	2 043.3	1 633.5	656.3	919.6	229.6	92.8	169.2	8 898.3
July	3 209.6	2 065.4	1 678.3	674.3	931.0	235.1	96.7	172.6	9 063.0
August	3 258.0	2 114.3	1 701.2	683.5	932.1	230.6	100.8	174.5	9 195.0
September	3 212.1	2 108.6	1 687.6	682.0	935.2	230.4	97.1	173.9	9 126.8
October	3 285.1	2 158.0	1 727.4	704.6	955.3	230.7	107.7	178.4	9 347.2
November	3 227.8	2 118.1	1 712.0	692.9	964.6	226.5	106.7	176.7	9 225.4

TREND ESTIMATES (\$ million)

1993									
September	2 978.6	1 972.9	1 550.7	644.6	886.1	226.5	91.7	169.2	8 520.5
October	3 006.2	1 967.0	1 562.5	648.7	890.5	228.8	92.4	169.9	8 566.1
November	3 041.2	1 964.8	1 574.0	654.0	897.1	230.6	93.0	171.5	8 626.2
December	3 075.8	1 967.0	1 584.2	659.1	904.8	231.5	93.4	173.3	8 689.1
1994									
January	3 102.6	1 973.1	1 592.1	662.0	911.5	231.5	93.4	174.7	8 740.9
February	3 121.2	1 981.2	1 598.7	661.7	915.6	231.1	93.3	175.1	8 777.8
March	3 136.3	1 992.0	1 606.3	659.7	917.1	230.8	93.2	174.5	8 809.9
April	3 149.9	2 006.1	1 616.9	657.7	917.0	231.0	93.4	173.3	8 845.2
May	3 165.0	2 024.4	1 631.1	658.2	917.2	231.3	93.9	172.1	8 893.4
June	3 182.4	2 046.4	1 648.5	662.5	920.1	231.6	95.0	171.7	8 958.2
July	3 202.0	2 070.0	1 666.8	669.9	926.0	231.5	96.7	172.3	9 035.1
August	3 221.6	2 094.2	1 684.5	678.8	934.2	231.2	99.0	173.5	9 116.9
September	3 238.6	2 115.4	1 700.5	687.0	942.7	230.6	101.4	174.9	9 191.1
October	3 252.5	2 132.9	1 713.9	693.9	951.0	229.9	103.8	176.3	9 254.3
November	3 256.8	2 141.9	1 722.1	698.8	956.5	228.7	105.8	177.2	9 288.0

RETAIL TURNOVER PERCENTAGE CHANGE, By State: All Series

Month	New South Wales	Victoria	Queensland	South Australia	Western Australia	Tasmania	Northern Territory	Australian Capital Territory	Australia
ORIGINAL (% change from preceding month)									
1993									
September	5.6	4.4	6.4	4.6	6.7	8.1	1.4	1.9	5.4
October	4.7	4.2	2.1	4.2	1.4	4.0	-1.8	5.5	3.6
November	2.7	3.5	1.6	4.5	2.9	4.6	0.2	1.0	2.8
December	30.7	31.3	31.9	30.2	35.3	28.8	13.2	37.0	31.4
1994									
January	-27.6	-31.2	-28.6	-29.1	-30.0	-28.3	-25.3	-34.0	-29.1
February	-7.4	-5.8	-8.5	-5.7	-4.9	-4.4	-1.5	-4.6	-6.7
March	14.9	15.6	15.1	12.2	10.5	10.3	14.4	17.4	14.3
April	-5.3	-4.6	-5.3	-5.4	-4.9	-5.6	-4.2	-5.9	-5.1
May	3.0	2.3	2.8	0.8	2.4	2.4	6.9	1.9	2.6
June	-1.0	-0.5	2.0	-1.5	0.3	-3.9	2.8	-3.6	-0.3
July	1.3	1.1	2.2	3.5	2.2	3.2	10.7	1.5	1.8
August	1.5	1.0	1.9	0.5	-2.2	-1.4	2.0	1.6	0.9
September	0.3	2.4	2.4	3.1	4.6	1.1	-4.7	1.4	1.8
October	4.0	4.9	2.3	4.5	3.2	0.4	7.2	5.7	3.8
November	2.9	1.9	1.6	3.3	3.4	4.2	-3.8	0.8	2.4
SEASONALLY ADJUSTED (% change from preceding month)									
1993									
September	1.4	1.0	2.2	0.5	0.5	7.1	1.7	-0.6	1.4
October	1.8	-1.2	0.0	0.7	-1.2	0.0	-0.2	1.1	0.3
November	0.4	2.4	1.6	1.7	2.4	1.2	5.1	-0.2	1.5
December	0.5	-3.6	0.7	0.6	0.9	-1.8	-4.5	4.7	-0.4
1994									
January	1.8	1.8	-1.4	-0.7	0.4	-0.9	-0.3	-2.3	0.7
February	-0.9	0.7	0.9	2.9	1.8	1.8	1.7	1.1	0.5
March	4.7	3.9	3.7	-1.5	1.3	1.9	1.7	3.6	3.4
April	-4.6	-4.8	-3.2	-3.0	-5.5	-5.0	-3.0	-6.5	-4.4
May	3.0	3.3	2.1	1.2	4.0	3.8	2.7	1.2	2.8
June	-0.6	1.0	0.4	0.4	-0.2	-1.5	-2.0	-1.3	0.0
July	1.8	1.1	2.7	2.7	1.2	2.4	4.2	2.0	1.9
August	1.5	2.4	1.4	1.4	0.1	-1.9	4.2	1.1	1.5
September	-1.4	-0.3	-0.8	-0.2	0.3	-0.1	-3.7	-0.3	-0.7
October	2.3	2.3	2.4	3.3	2.1	0.1	10.9	2.6	2.4
November	-1.7	-1.8	-0.9	-1.7	1.0	-1.8	-0.9	-1.0	-1.3
TREND ESTIMATES (% change from preceding month)									
1993									
September	0.5	-0.3	0.7	0.4	0.3	1.0	0.4	-0.1	0.3
October	0.9	-0.3	0.8	0.6	0.5	1.0	0.8	0.4	0.5
November	1.2	-0.1	0.7	0.8	0.7	0.8	0.6	0.9	0.7
December	1.1	0.1	0.6	0.8	0.9	0.4	0.4	1.0	0.7
1994									
January	0.9	0.3	0.5	0.4	0.7	0.0	0.0	0.8	0.6
February	0.6	0.4	0.4	0.0	0.4	-0.2	-0.1	0.2	0.4
March	0.5	0.5	0.5	-0.3	0.2	-0.1	-0.1	-0.3	0.4
April	0.4	0.7	0.7	-0.3	0.0	0.1	0.2	-0.7	0.4
May	0.5	0.9	0.9	0.1	0.0	0.1	0.5	-0.7	0.5
June	0.5	1.1	1.1	0.7	0.3	0.1	1.2	-0.2	0.7
July	0.6	1.2	1.1	1.1	0.6	0.0	1.8	0.3	0.9
August	0.6	1.2	1.1	1.3	0.9	-0.1	2.4	0.7	0.9
September	0.5	1.0	0.9	1.2	0.9	-0.3	2.4	0.8	0.8
October	0.4	0.8	0.8	1.0	0.9	-0.3	2.4	0.8	0.7
November	0.1	0.4	0.5	0.7	0.6	-0.5	1.9	0.5	0.4

RETAIL TURNOVER, By Industry Group¹—New South Wales: All Series

Month	Food retailing	Department stores	Clothing and soft good retailing	Household good retailing	Recreational good retailing	Other retailing	Hospitality and services	Total
ORIGINAL (\$ million)								
1993								
September	1 096.0	291.3	223.0	306.7	157.2	262.9	582.0	2 919.1
October	1 139.0	306.5	233.4	323.8	159.6	276.5	618.0	3 056.8
November	1 134.6	337.5	242.0	328.0	174.3	299.4	622.5	3 138.3
December	1 313.5	611.9	349.4	439.2	208.6	458.5	719.8	4 100.9
1994								
January	1 154.4	255.5	230.9	305.1	141.9	262.4	619.1	2 969.3
February	1 064.8	227.6	186.5	297.0	153.7	254.7	564.3	2 748.6
March	1 182.6	288.3	231.8	339.4	194.8	280.8	640.2	3 157.9
April	1 092.5	281.0	237.6	310.7	157.3	259.4	651.3	2 989.8
May	1 101.7	311.7	245.5	347.8	171.9	270.6	630.8	3 080.0
June	1 104.9	315.8	228.9	338.8	177.9	263.0	620.8	3 050.1
July	1 142.7	276.8	216.5	345.7	184.6	270.8	654.1	3 091.2
August	1 150.1	269.6	209.5	396.1	170.1	295.0	646.4	3 136.8
September	1 163.7	306.4	222.4	341.5	166.7	303.3	642.1	3 146.1
October	1 192.6	317.6	230.6	371.4	162.2	323.3	673.8	3 271.5
November	1 184.1	348.2	241.7	404.9	180.2	322.5	683.7	3 365.3
SEASONALLY ADJUSTED (\$ million)								
1993								
September	1 116.0	309.3	233.3	309.6	158.3	262.3	590.7	2 979.5
October	1 126.9	315.4	233.7	323.4	160.1	271.5	602.6	3 033.6
November	1 141.8	304.6	234.5	312.5	164.5	275.7	612.8	3 046.3
December	1 112.1	309.1	237.7	321.6	156.2	318.5	605.7	3 061.0
1994								
January	1 155.8	313.9	245.2	330.3	161.8	288.7	619.1	3 114.8
February	1 142.7	314.6	237.0	331.4	159.8	286.3	614.0	3 085.8
March	1 173.1	327.2	258.6	342.6	184.5	293.1	651.4	3 230.6
April	1 097.1	307.8	243.6	339.1	167.5	277.7	650.2	3 082.9
May	1 148.5	314.6	231.2	360.0	178.3	289.0	652.4	3 173.9
June	1 139.5	318.7	221.2	349.3	188.5	286.2	650.7	3 154.1
July	1 160.1	315.5	223.5	360.6	190.8	290.9	668.2	3 209.6
August	1 166.6	317.1	232.6	404.9	179.2	301.2	656.4	3 258.0
September	1 183.1	325.3	233.8	346.7	168.7	302.4	652.3	3 212.1
October	1 200.3	328.6	230.0	371.5	166.2	320.0	668.5	3 285.1
November	1 174.7	312.5	235.5	380.1	167.3	295.1	662.7	3 227.8
TREND ESTIMATES (\$ million)								
1993								
September	1 114.5	305.9	235.4	308.9	155.6	266.4	592.0	2 978.6
October	1 121.7	307.2	235.0	313.6	156.5	274.9	597.4	3 006.2
November	1 130.3	309.7	236.3	318.3	158.7	283.7	604.1	3 041.2
December	1 137.6	312.2	239.5	323.2	161.1	290.3	611.7	3 075.8
1994								
January	1 141.4	313.9	242.9	328.3	163.4	293.0	619.8	3 102.6
February	1 141.7	314.9	244.5	332.8	166.6	292.0	628.6	3 121.2
March	1 140.3	315.8	243.3	338.6	171.4	289.1	637.9	3 136.3
April	1 139.1	316.0	239.7	345.7	176.8	286.2	646.4	3 149.9
May	1 140.9	316.2	234.8	353.1	181.2	285.9	652.9	3 165.0
June	1 146.8	316.7	230.6	359.6	182.9	289.1	656.6	3 182.4
July	1 156.6	318.0	228.4	365.0	181.7	294.0	658.2	3 202.0
August	1 168.0	319.6	228.5	369.1	178.6	298.7	659.2	3 221.6
September	1 177.8	320.8	229.9	372.1	174.7	302.7	660.5	3 238.6
October	1 186.0	321.6	231.8	374.4	170.9	305.9	662.0	3 252.5
November	1 189.1	321.3	233.8	375.3	166.7	307.4	663.2	3 256.8

¹ See paragraph 3 of the Explanatory Notes

RETAIL TURNOVER, By Industry Group¹—Victoria: All Series

Month	Food retailing	Department stores	Clothing and soft good retailing	Household good retailing	Recreational good retailing	Other retailing	Hospitality and services	Total
ORIGINAL (\$ million)								
1993								
September	776.2	193.6	150.7	259.5	90.3	173.5	256.6	1 900.4
October	803.6	201.0	159.6	278.2	93.9	185.6	257.5	1 979.4
November	791.4	219.9	169.9	291.9	103.3	200.8	270.9	2 048.1
December	956.4	396.8	248.2	358.1	144.0	267.5	317.7	2 688.7
1994								
January	792.2	167.5	145.4	244.9	97.0	156.8	246.3	1 850.1
February	762.2	149.1	123.3	230.8	92.1	151.2	234.3	1 743.0
March	875.1	189.2	157.1	243.2	100.8	177.1	272.5	2 015.0
April	810.8	197.0	165.7	222.7	94.1	168.8	263.2	1 922.3
May	804.4	212.1	165.6	242.2	101.9	178.8	261.7	1 966.7
June	812.9	210.8	146.3	251.4	103.0	174.0	259.2	1 957.6
July	836.4	169.9	148.9	250.1	112.3	183.3	277.3	1 978.2
August	831.8	182.2	138.7	255.0	119.7	191.6	278.6	1 997.6
September	854.4	202.8	141.8	249.7	114.1	192.8	290.2	2 045.8
October	887.1	215.2	152.6	251.0	121.0	212.5	307.0	2 146.4
November	878.4	223.1	156.0	266.4	130.7	219.9	313.4	2 187.9
SEASONALLY ADJUSTED (\$ million)								
1993								
September	799.9	207.3	167.6	273.4	94.3	176.6	258.7	1 977.8
October	787.3	207.2	159.2	272.9	95.2	178.9	253.7	1 954.4
November	794.4	201.5	167.2	281.5	100.8	192.0	264.5	2 001.9
December	794.1	193.4	164.6	250.2	96.6	180.8	251.0	1 930.6
1994								
January	812.2	213.3	164.6	259.7	94.9	173.0	246.8	1 964.4
February	818.0	205.6	158.6	266.8	98.0	178.4	252.1	1 977.5
March	849.6	216.6	172.1	251.5	102.4	184.9	278.1	2 055.2
April	804.7	201.7	155.0	240.9	103.5	180.8	270.3	1 957.0
May	828.6	216.1	154.1	250.4	107.6	187.1	278.6	2 022.4
June	845.6	213.8	151.2	257.9	115.2	184.1	275.5	2 043.3
July	857.2	204.1	149.6	254.5	122.5	193.3	284.3	2 065.4
August	869.0	212.6	154.1	262.0	126.6	198.4	291.7	2 114.3
September	871.7	214.1	152.3	262.8	120.5	196.0	291.2	2 108.6
October	888.3	228.0	154.6	249.0	124.4	208.0	305.6	2 158.0
November	872.3	200.2	156.0	258.0	124.2	202.6	304.7	2 118.1
TREND ESTIMATES (\$ million)								
1993								
September	794.2	201.1	168.8	272.8	95.5	179.3	261.3	1 972.9
October	794.2	200.9	166.1	271.3	96.3	180.6	257.7	1 967.0
November	797.1	202.2	164.3	268.9	96.7	180.9	254.7	1 964.8
December	802.4	204.0	164.0	265.1	96.9	180.8	253.7	1 967.0
1994								
January	809.2	206.0	164.1	260.4	97.4	180.6	255.5	1 973.1
February	816.1	207.8	163.2	255.8	98.6	180.2	259.5	1 981.2
March	822.4	209.4	161.3	252.4	101.1	180.6	264.8	1 992.0
April	828.5	210.3	158.4	251.1	105.1	182.3	270.4	2 006.1
May	835.5	210.8	155.4	251.9	110.0	185.1	275.8	2 024.4
June	844.2	211.2	153.2	253.7	114.9	188.6	280.7	2 046.4
July	854.2	212.0	152.1	255.7	118.9	192.2	285.0	2 070.0
August	864.2	212.9	152.1	257.4	121.8	195.8	289.8	2 094.2
September	872.8	213.5	152.9	258.0	123.8	199.4	295.0	2 115.4
October	879.6	213.7	153.9	258.0	125.1	202.5	300.1	2 132.9
November	882.8	212.7	154.8	257.1	125.7	204.8	304.0	2 141.9

¹ See paragraph 3 of the Explanatory Notes

RETAIL TURNOVER, By Industry Group¹—Queensland: All Series

Month	Food retailing	Department stores	Clothing and soft good retailing	Household good retailing	Recreational good retailing	Other retailing	Hospitality and services	Total
ORIGINAL (\$ million)								
1993								
September	570.7	145.1	121.8	186.9	96.9	169.3	264.8	1 555.5
October	585.1	149.9	114.8	192.8	94.3	174.0	277.7	1 588.6
November	571.3	158.6	116.0	215.8	95.8	184.4	272.5	1 614.4
December	658.6	274.5	169.8	251.6	155.9	274.8	344.0	2 129.2
1994								
January	564.6	127.7	114.0	175.0	100.4	155.2	282.5	1 519.4
February	534.6	110.1	92.6	169.7	98.2	143.8	241.9	1 390.9
March	619.6	133.4	117.3	190.8	108.3	163.5	268.4	1 601.3
April	586.1	134.1	118.6	170.9	92.6	154.4	259.7	1 516.4
May	584.4	146.5	121.9	183.8	98.2	165.4	259.1	1 559.3
June	592.4	154.9	124.3	190.2	98.8	165.3	264.5	1 590.4
July	617.7	129.7	124.6	183.6	107.0	170.3	292.5	1 625.4
August	620.5	138.7	124.2	185.6	107.5	186.8	293.0	1 656.3
September	625.2	156.6	136.6	191.4	107.9	185.9	291.8	1 695.4
October	655.5	163.5	135.7	175.0	115.8	182.9	305.4	1 733.8
November	649.6	171.6	137.7	192.3	132.0	180.3	298.5	1 762.0
SEASONALLY ADJUSTED (\$ million)								
1993								
September	575.2	145.0	115.4	189.7	99.4	170.1	264.8	1 559.5
October	574.1	150.3	112.2	185.8	93.8	170.7	272.2	1 559.0
November	581.6	146.2	116.3	197.7	96.4	175.3	270.2	1 583.8
December	585.9	146.1	117.3	187.1	107.0	173.4	278.8	1 595.6
1994								
January	566.0	149.1	117.8	188.3	103.3	168.5	280.8	1 573.7
February	580.9	149.7	120.4	188.0	103.6	170.0	274.7	1 587.3
March	613.7	154.0	132.9	190.3	108.7	174.0	272.1	1 645.7
April	590.3	148.3	126.1	187.3	103.4	169.1	269.0	1 593.7
May	604.0	154.3	123.7	195.1	104.7	172.5	272.9	1 627.2
June	604.4	153.6	120.7	197.6	105.1	176.0	276.1	1 633.5
July	613.5	151.1	126.8	197.3	112.0	184.5	293.0	1 678.3
August	616.1	154.3	131.7	199.2	109.4	194.4	295.9	1 701.2
September	624.4	154.4	128.0	194.2	111.6	185.3	289.7	1 687.6
October	650.5	167.7	135.8	173.7	117.8	179.9	302.0	1 727.4
November	652.5	154.7	136.0	173.4	131.3	170.4	293.7	1 712.0
TREND ESTIMATES (\$ million)								
1993								
September	575.3	146.2	113.9	184.6	97.6	163.7	269.3	1 550.7
October	575.5	146.5	114.5	187.5	98.6	168.7	271.2	1 562.5
November	576.6	147.2	115.6	189.3	100.0	171.8	273.5	1 574.0
December	578.9	148.0	117.8	189.9	101.7	172.9	275.1	1 584.2
1994								
January	582.4	148.9	120.4	189.5	103.4	172.2	275.3	1 592.1
February	587.1	149.9	122.7	189.2	104.6	170.9	274.3	1 598.7
March	592.3	150.9	124.4	189.7	105.2	170.5	273.2	1 606.3
April	597.3	151.5	125.2	191.8	105.5	172.2	273.4	1 616.9
May	602.0	152.1	125.5	194.6	105.6	175.6	275.9	1 631.1
June	607.1	152.8	125.8	196.4	106.5	179.5	280.5	1 648.5
July	613.2	153.9	126.8	195.8	108.6	182.6	286.0	1 666.8
August	621.1	155.3	128.6	193.0	111.6	184.0	290.9	1 684.5
September	630.4	156.9	131.0	188.7	115.2	183.7	294.6	1 700.5
October	639.8	158.4	133.3	183.8	119.2	182.3	297.3	1 713.9
November	647.3	159.2	135.4	178.6	122.8	179.9	298.9	1 722.1

¹ See paragraph 3 of the Explanatory Notes

RETAIL TURNOVER, By Industry Group¹—South Australia: All Series

Month	Food retailing	Department stores	Clothing and soft good retailing	Household good retailing	Recreational good retailing	Other retailing	Hospitality and services	Total
ORIGINAL (\$ million)								
1993								
September	254.5	86.1	36.9	67.8	29.6	53.5	96.4	624.8
October	261.4	89.7	38.4	71.8	29.4	51.9	108.7	651.3
November	264.4	102.0	40.1	75.8	30.4	55.3	112.7	680.7
December	320.0	167.5	53.6	91.1	44.3	75.9	134.1	886.5
1994								
January	255.9	76.7	34.1	70.1	31.3	50.1	110.7	628.9
February	245.6	71.1	30.0	64.3	28.8	49.0	104.3	593.1
March	278.1	81.9	38.2	73.8	28.8	52.5	112.0	665.3
April	255.9	86.5	44.7	64.8	26.2	50.5	101.1	629.7
May	253.9	91.3	41.0	68.0	25.6	52.4	102.4	634.6
June	251.1	90.7	39.5	70.7	25.3	52.0	95.6	624.9
July	264.3	83.8	38.5	68.6	27.4	54.3	110.0	646.9
August	262.4	84.6	37.7	69.1	26.7	57.6	111.9	650.0
September	266.5	87.4	41.3	67.6	26.0	60.3	121.3	670.4
October	275.6	93.3	43.6	73.2	28.2	59.1	127.4	700.4
November	276.9	103.5	43.6	78.0	30.5	63.0	128.0	723.5
SEASONALLY ADJUSTED (\$ million)								
1993								
September	259.5	92.1	38.4	69.7	30.1	53.2	98.1	641.1
October	258.1	92.1	37.5	71.4	30.2	51.7	104.5	645.5
November	263.7	90.2	39.3	71.7	31.8	53.4	106.5	656.7
December	268.7	91.8	41.1	68.7	30.5	50.4	109.7	660.9
1994								
January	262.4	91.0	37.8	73.0	32.1	53.5	106.9	656.5
February	267.6	93.9	39.4	73.4	31.6	56.3	113.4	675.7
March	267.8	93.5	39.2	75.3	27.2	54.5	108.1	665.7
April	257.5	91.6	42.9	70.9	26.9	53.1	102.7	645.6
May	259.5	91.3	38.1	69.8	27.7	56.6	110.4	653.5
June	261.2	96.1	39.0	72.5	27.6	54.0	105.9	656.3
July	269.5	92.8	38.1	71.9	28.5	58.1	115.4	674.3
August	270.1	94.6	40.1	69.2	28.7	60.7	120.2	683.5
September	269.0	93.2	42.5	68.5	26.2	59.5	123.1	682.0
October	276.9	97.3	43.4	73.5	29.2	59.5	124.8	704.6
November	273.8	90.0	42.4	75.4	31.7	60.3	119.4	692.9
TREND ESTIMATES (\$ million)								
1993								
September	260.6	91.4	37.8	69.1	30.1	51.9	103.8	644.6
October	261.6	91.2	38.4	70.3	30.7	52.0	104.6	648.7
November	263.2	91.3	38.9	71.2	31.1	52.4	106.0	654.0
December	264.6	91.7	39.3	71.9	31.2	52.9	107.5	659.1
1994								
January	265.2	92.0	39.6	72.4	30.8	53.4	108.5	662.0
February	264.7	92.3	39.8	72.6	29.9	53.8	108.5	661.7
March	263.5	92.6	39.8	72.7	29.0	54.3	107.8	659.7
April	262.4	92.9	39.6	72.4	28.2	54.8	107.5	657.7
May	262.3	93.2	39.4	71.7	27.6	55.6	108.5	658.2
June	263.6	93.6	39.4	71.0	27.5	56.5	111.0	662.5
July	266.0	93.9	39.8	70.6	27.7	57.5	114.4	669.9
August	268.8	94.1	40.4	70.8	28.1	58.6	117.9	678.8
September	271.5	94.1	41.3	71.4	28.6	59.5	120.7	687.0
October	273.7	93.9	42.1	72.1	29.1	60.2	122.8	693.9
November	275.2	93.5	43.0	72.9	29.7	60.5	123.9	698.8

¹ See paragraph 3 of the Explanatory Notes

RETAIL TURNOVER, By Industry Group¹—Western Australia: All Series

Month	Food retailing	Department stores	Clothing and soft good retailing	Household good retailing	Recreational good retailing	Other retailing	Hospitality and services	Total
ORIGINAL (\$ million)								
1993								
September	377.1	82.0	50.7	107.6	46.9	75.3	135.9	875.5
October	374.3	91.6	51.8	105.0	45.4	77.6	142.3	888.0
November	374.5	99.2	54.2	114.5	48.4	78.5	144.2	913.5
December	462.9	166.6	87.5	154.4	75.2	117.8	171.3	1 235.7
1994								
January	367.2	75.5	55.2	108.1	49.1	66.1	143.6	864.8
February	356.2	69.0	48.0	104.9	47.6	63.5	133.0	822.2
March	397.7	81.1	51.1	107.5	44.5	67.2	159.1	908.2
April	367.2	86.2	55.6	103.0	40.3	69.7	141.6	863.6
May	371.6	95.1	61.7	110.0	41.4	70.4	134.0	884.2
June	370.9	92.1	62.1	113.9	43.6	71.8	132.5	886.9
July	391.6	77.0	58.4	105.6	47.1	76.0	150.9	906.6
August	386.6	80.0	56.9	98.8	46.1	75.4	143.2	887.0
September	393.2	86.5	61.0	102.2	45.3	84.0	155.2	927.4
October	394.8	95.2	61.9	103.3	51.1	81.4	169.1	956.8
November	405.9	100.6	67.3	112.0	53.7	83.4	166.7	989.6
SEASONALLY ADJUSTED (\$ million)								
1993								
September	380.1	89.9	52.1	109.1	47.6	74.8	133.5	887.1
October	377.7	90.9	51.8	99.9	45.3	74.7	136.0	876.4
November	381.1	92.5	54.8	108.4	46.5	73.9	140.6	897.8
December	379.5	87.1	58.2	116.3	50.7	74.8	139.4	906.1
1994								
January	373.9	89.1	60.3	114.7	54.2	74.6	142.7	909.6
February	381.8	92.8	60.9	119.2	49.3	75.6	146.2	925.8
March	393.1	92.7	59.4	114.2	45.3	73.4	159.6	937.7
April	369.4	88.9	57.7	110.3	43.1	73.9	142.7	886.0
May	385.1	94.0	59.5	114.8	46.2	76.7	144.8	921.0
June	380.7	94.0	59.0	116.1	47.7	79.8	142.3	919.6
July	395.8	88.7	59.2	104.4	49.1	78.6	155.1	931.0
August	396.8	94.0	59.9	104.0	48.9	77.4	151.1	932.1
September	394.9	95.7	62.7	102.3	45.8	82.8	151.0	935.2
October	402.3	96.5	61.8	100.4	51.8	79.3	163.2	955.3
November	409.4	90.6	68.1	105.1	50.6	78.3	162.4	964.6
TREND ESTIMATES (\$ million)								
1993								
September	378.8	89.6	53.0	108.9	47.8	74.7	133.3	886.1
October	378.9	89.9	53.9	109.1	48.3	74.9	135.5	890.5
November	379.1	90.1	55.4	110.2	48.9	74.8	138.6	897.1
December	379.6	90.2	57.2	111.9	49.3	74.5	142.1	904.8
1994								
January	379.9	90.5	58.7	114.0	49.2	74.4	144.8	911.5
February	380.1	90.9	59.6	115.5	48.5	74.5	146.6	915.6
March	380.4	91.3	59.7	115.9	47.5	74.8	147.5	917.1
April	381.5	91.6	59.4	114.8	46.6	75.5	147.6	917.0
May	383.4	92.1	59.0	112.7	46.1	76.6	147.4	917.2
June	386.3	92.5	59.0	110.3	46.6	77.7	147.8	920.1
July	390.0	92.9	59.6	107.8	47.5	78.7	149.3	926.0
August	394.5	93.4	60.8	105.5	48.5	79.4	152.1	934.2
September	398.9	93.8	62.1	103.6	49.2	79.7	155.4	942.7
October	403.0	94.0	63.5	102.2	49.8	79.9	158.7	951.0
November	405.6	93.8	64.8	101.1	50.2	79.7	161.3	956.5

¹ See paragraph 3 of the Explanatory Notes

RETAIL TURNOVER, By Industry Group¹—Tasmania: All Series

Month	Food retailing	Department stores	Clothing and soft good retailing	Household good retailing	Recreational good retailing	Other retailing	Hospitality and services	Total
ORIGINAL (\$ million)								
1993								
September	95.3	n.p.	13.3	19.2	17.2	n.p.	34.3	220.5
October	97.7	n.p.	14.0	19.4	18.1	n.p.	39.2	229.4
November	97.5	n.p.	17.2	21.9	18.8	n.p.	38.3	239.9
December	115.6	n.p.	21.3	26.4	26.0	n.p.	44.9	308.9
1994								
January	94.7	n.p.	13.9	17.1	16.2	n.p.	39.8	221.6
February	93.4	n.p.	14.2	17.0	17.2	n.p.	35.1	211.8
March	100.9	n.p.	17.0	20.8	16.3	n.p.	36.8	233.6
April	89.7	n.p.	19.3	20.1	14.9	n.p.	37.4	220.6
May	92.2	n.p.	19.2	22.1	15.6	n.p.	34.9	225.9
June	92.1	n.p.	16.3	22.9	14.8	n.p.	32.7	217.1
July	94.8	n.p.	16.7	20.1	14.8	n.p.	38.8	224.0
August	93.5	n.p.	16.0	22.2	15.2	n.p.	36.1	220.8
September	93.6	n.p.	14.1	22.1	16.0	n.p.	37.8	223.2
October	94.3	n.p.	14.1	20.4	13.9	n.p.	41.3	224.2
November	96.5	n.p.	15.2	21.4	15.9	n.p.	40.2	233.7

SEASONALLY ADJUSTED (\$ million)								
1993								
September	97.9	n.p.	15.8	19.6	18.0	n.p.	36.5	231.1
October	95.8	n.p.	15.7	20.4	18.3	n.p.	38.6	231.1
November	97.2	n.p.	16.9	20.0	18.8	n.p.	38.0	233.9
December	98.9	n.p.	14.1	19.2	17.3	n.p.	35.9	229.8
1994								
January	94.3	n.p.	15.4	19.3	17.5	n.p.	36.8	227.7
February	98.6	n.p.	16.0	19.7	17.5	n.p.	37.4	231.9
March	99.7	n.p.	18.3	22.2	16.1	n.p.	36.1	236.4
April	90.1	n.p.	18.4	21.5	16.0	n.p.	37.9	224.5
May	95.9	n.p.	18.4	22.0	16.5	n.p.	37.4	233.1
June	97.5	n.p.	15.7	23.4	15.8	n.p.	35.5	229.6
July	96.3	n.p.	17.4	20.5	16.4	n.p.	41.9	235.1
August	95.9	n.p.	17.6	21.7	16.1	n.p.	37.9	230.6
September	94.5	n.p.	16.2	22.4	16.8	n.p.	39.1	230.4
October	94.5	n.p.	16.2	21.5	14.5	n.p.	41.3	230.7
November	95.0	n.p.	14.9	19.9	15.6	n.p.	40.1	226.5

TREND ESTIMATES (\$ million)								
1993								
September	96.0	n.p.	15.6	19.0	17.8	n.p.	36.7	226.5
October	96.6	n.p.	15.4	19.4	18.0	n.p.	37.1	228.8
November	97.1	n.p.	15.3	19.6	18.0	n.p.	37.2	230.6
December	97.3	n.p.	15.6	19.8	17.8	n.p.	37.2	231.5
1994								
January	97.1	n.p.	16.1	20.0	17.5	n.p.	37.0	231.5
February	96.7	n.p.	16.6	20.5	17.0	n.p.	36.8	231.1
March	96.2	n.p.	17.1	21.0	16.6	n.p.	36.8	230.8
April	95.9	n.p.	17.6	21.6	16.3	n.p.	37.0	231.0
May	95.7	n.p.	17.7	22.0	16.2	n.p.	37.4	231.3
June	95.7	n.p.	17.6	22.1	16.2	n.p.	38.0	231.6
July	95.7	n.p.	17.2	22.0	16.2	n.p.	38.5	231.5
August	95.6	n.p.	16.8	21.8	16.1	n.p.	39.1	231.2
September	95.4	n.p.	16.4	21.5	15.9	n.p.	39.7	230.6
October	95.2	n.p.	16.0	21.2	15.7	n.p.	40.1	229.9
November	94.6	n.p.	15.7	20.9	15.5	n.p.	40.5	228.7

¹ See paragraph 3 of the Explanatory Notes

RETAIL TURNOVER, By Industry Group¹—Northern Territory: All Series

Month	Food retailing	Department stores	Clothing and soft good retailing	Household good retailing	Recreational good retailing	Other retailing	Hospitality and services	Total
ORIGINAL (\$ million)								
1993								
September	48.9	n.p.	7.1	7.4	5.3	n.p.	16.4	96.5
October	49.1	n.p.	6.8	7.5	4.4	n.p.	16.0	94.8
November	48.0	n.p.	7.3	8.4	4.2	n.p.	15.7	95.0
December	52.8	n.p.	7.0	9.2	4.5	n.p.	15.8	107.5
1994								
January	44.1	n.p.	4.6	6.5	3.1	n.p.	12.7	80.3
February	43.1	n.p.	4.6	6.6	3.3	n.p.	12.7	79.1
March	47.4	n.p.	4.5	7.9	4.2	n.p.	15.3	90.5
April	46.1	n.p.	3.9	6.2	4.3	n.p.	14.6	86.7
May	47.9	n.p.	4.7	7.3	4.7	n.p.	15.3	92.7
June	48.6	n.p.	5.1	8.2	5.0	n.p.	15.4	95.3
July	55.0	n.p.	6.1	8.1	5.6	n.p.	16.8	105.5
August	54.7	n.p.	5.4	8.0	6.1	n.p.	18.3	107.6
September	53.1	n.p.	5.0	8.0	5.4	n.p.	16.7	102.5
October	58.0	n.p.	5.3	8.4	6.1	n.p.	17.6	109.9
November	54.4	n.p.	5.2	8.6	6.6	n.p.	16.0	105.7
SEASONALLY ADJUSTED (\$ million)								
1993								
September	47.0	n.p.	6.7	7.4	4.8	n.p.	15.1	92.0
October	47.7	n.p.	6.6	7.3	4.2	n.p.	14.9	91.8
November	49.6	n.p.	7.6	8.3	4.3	n.p.	15.8	96.5
December	49.9	n.p.	5.0	7.1	3.6	n.p.	15.3	92.2
1994								
January	47.7	n.p.	5.8	7.9	4.1	n.p.	15.0	91.9
February	48.3	n.p.	6.0	7.7	4.2	n.p.	15.7	93.5
March	48.5	n.p.	5.7	7.9	4.5	n.p.	15.8	95.1
April	47.8	n.p.	4.7	6.6	4.7	n.p.	15.5	92.2
May	49.1	n.p.	4.8	7.5	4.7	n.p.	15.2	94.7
June	47.4	n.p.	4.7	7.8	4.9	n.p.	14.9	92.8
July	50.5	n.p.	4.9	8.1	5.0	n.p.	14.9	96.7
August	51.3	n.p.	4.9	8.1	5.3	n.p.	16.9	100.8
September	50.8	n.p.	4.7	7.8	5.0	n.p.	15.1	97.1
October	56.8	n.p.	5.2	8.4	5.9	n.p.	16.7	107.7
November	55.8	n.p.	5.5	8.4	6.6	n.p.	16.1	106.7
TREND ESTIMATES (\$ million)								
1993								
September	47.6	n.p.	6.5	7.4	4.2	n.p.	15.2	91.7
October	48.1	n.p.	6.6	7.5	4.2	n.p.	15.2	92.4
November	48.5	n.p.	6.5	7.6	4.1	n.p.	15.3	93.0
December	48.7	n.p.	6.3	7.7	4.1	n.p.	15.4	93.4
1994								
January	48.7	n.p.	5.9	7.6	4.1	n.p.	15.5	93.4
February	48.4	n.p.	5.6	7.5	4.2	n.p.	15.5	93.3
March	48.2	n.p.	5.3	7.5	4.4	n.p.	15.4	93.2
April	48.1	n.p.	5.1	7.4	4.6	n.p.	15.4	93.4
May	48.3	n.p.	4.9	7.5	4.8	n.p.	15.3	93.9
June	48.9	n.p.	4.8	7.6	4.9	n.p.	15.3	95.0
July	50.0	n.p.	4.8	7.8	5.1	n.p.	15.5	96.7
August	51.3	n.p.	4.9	8.0	5.3	n.p.	15.7	99.0
September	52.8	n.p.	5.0	8.2	5.5	n.p.	15.9	101.4
October	54.2	n.p.	5.1	8.3	5.8	n.p.	16.1	103.8
November	55.5	n.p.	5.2	8.3	6.0	n.p.	16.3	105.8

¹ See paragraph 3 of the Explanatory Notes

RETAIL TURNOVER, By Industry Group¹—Australian Capital Territory: All Series

Month	Food retailing	Department stores	Clothing and soft good retailing	Household good retailing	Recreational good retailing	Other retailing	Hospitality and services	Total
ORIGINAL (\$ million)								
1993								
September	64.0	21.2	12.4	16.0	9.9	14.9	25.5	163.9
October	66.7	22.6	12.3	17.1	10.0	14.4	29.8	172.9
November	65.9	24.2	12.2	17.7	10.7	16.2	27.8	174.7
December	75.9	43.8	20.6	24.8	15.9	25.7	32.7	239.4
1994								
January	61.9	19.0	12.3	16.3	9.3	13.1	26.1	158.0
February	60.2	17.4	11.2	15.4	10.0	12.5	24.1	150.8
March	68.3	22.1	12.9	16.1	11.6	14.6	31.4	177.0
April	62.7	22.5	13.3	14.8	9.8	14.1	29.4	166.6
May	64.0	23.7	12.8	16.5	10.5	13.1	29.2	169.8
June	62.7	23.6	12.2	14.9	10.2	12.5	27.6	163.7
July	63.5	21.3	11.4	16.8	10.4	13.5	29.2	166.1
August	64.9	19.5	10.5	20.5	10.5	14.3	28.6	168.8
September	66.5	21.8	11.8	16.5	10.6	15.6	28.4	171.2
October	70.2	23.2	11.6	19.5	10.0	18.3	28.1	180.9
November	69.0	24.0	12.0	18.0	11.7	17.4	30.3	182.4

SEASONALLY ADJUSTED (\$ million)								
1993								
September	63.9	23.2	13.4	16.8	10.1	14.9	25.4	167.6
October	65.5	23.3	12.5	17.4	10.0	13.4	27.2	169.5
November	65.5	22.6	12.8	17.8	10.4	14.7	25.4	169.1
December	64.9	22.6	13.9	18.6	11.3	17.2	28.7	177.1
1994								
January	63.9	23.0	13.8	17.8	10.7	14.7	29.0	173.0
February	64.9	24.0	14.4	17.5	10.7	14.9	28.5	174.9
March	68.8	24.9	13.4	16.7	10.8	15.1	31.3	181.2
April	62.6	23.5	12.7	15.3	10.7	14.5	30.0	169.4
May	65.3	23.5	11.7	16.4	11.2	14.2	29.0	171.4
June	65.0	23.4	11.8	14.5	11.3	14.7	28.5	169.2
July	64.7	23.2	11.6	16.9	11.2	15.2	30.0	172.6
August	65.3	23.3	12.0	20.0	10.5	14.7	28.8	174.5
September	66.3	24.0	12.3	17.3	10.6	14.8	28.5	173.9
October	69.5	23.9	11.9	20.0	10.1	17.3	25.8	178.4
November	68.5	22.4	12.9	18.0	11.2	15.9	27.6	176.7

TREND ESTIMATES (\$ million)								
1993								
September	64.1	22.7	12.8	18.4	10.3	14.8	26.2	169.2
October	64.5	22.7	12.9	18.0	10.4	14.8	26.7	169.9
November	64.9	22.8	13.3	17.8	10.5	15.0	27.2	171.5
December	65.1	23.1	13.6	17.7	10.6	15.2	27.9	173.3
1994								
January	65.3	23.4	13.8	17.5	10.7	15.2	28.7	174.7
February	65.3	23.7	13.7	17.1	10.8	15.1	29.4	175.1
March	65.2	23.8	13.3	16.5	10.9	15.0	29.8	174.5
April	65.1	23.8	12.8	16.1	11.0	14.7	29.9	173.3
May	64.9	23.7	12.3	16.0	11.0	14.5	29.8	172.1
June	64.9	23.6	11.9	16.3	11.0	14.6	29.4	171.7
July	65.2	23.5	11.8	17.0	10.9	14.9	29.0	172.3
August	65.9	23.4	11.9	17.7	10.8	15.2	28.5	173.5
September	66.8	23.4	12.1	18.4	10.7	15.6	28.0	174.9
October	67.7	23.4	12.3	18.8	10.6	15.9	27.5	176.3
November	68.4	23.3	12.5	19.1	10.6	16.2	27.2	177.2

¹ See paragraph 3 of the Explanatory Notes

EXPLANATORY NOTES



INTRODUCTION

- 1 This publication presents monthly estimates of the value of turnover of retail businesses classified by industry, and by State. The principal objective of the Retail Trade survey is to show month to month movement of retail turnover.
- 2 Estimates of turnover contained in this publication are based on a survey of about 7,000 retail and selected service businesses (covering 20,000 outlets). All 'large' businesses are included in the survey, while a sample of about 4,400 'smaller' businesses is selected. The 'large' business' contribution of approximately 54 per cent of the total estimate ensures a highly reliable Australian total turnover estimate.

SCOPE AND COVERAGE

- 3 The Retail Trade survey covers all employing businesses, with at least one retail establishment. The scope of the survey (classified according to the Australian and New Zealand Standard Industrial Classification [ANZSIC]) is detailed below:

- Food Retailing
 - Supermarkets and grocery stores (5110)
and non-petrol sales of identified convenience stores of petrol stations
 - Takeaway food retailing (5125)
 - Other food retailing
 - Fresh meat, fish and poultry retailing (5121)
 - Fruit and vegetable retailing (5122)
 - Liquor retailing (5123)
 - Bread and cake retailing (5124)
 - Specialised food retailing n.e.c. (5129)
- Department Stores (5210)
- Clothing and Soft Good Retailing
 - Clothing retailing (5221)
 - Other clothing related retailing
 - Footwear retailing (5222)
 - Fabric and other soft good retailing (5223)
- Household Good Retailing
 - Furniture and floorcovering retailing
 - Furniture retailing (5231)
 - Floor covering retailing (5232)
 - Domestic hardware and houseware retailing (5233)
 - Domestic appliance retailing
 - Domestic appliance retailing (5234)
 - Recorded music retailing (5235)
- Recreational Good Retailing
 - Newspaper, book and stationery retailing (5243)
 - Other recreational good retailing
 - Sport and camping equipment retailing (5241)
 - Toy and game retailing (5242)
 - Photographic equipment retailing (5244)
- Other Retailing
 - Pharmaceutical, cosmetic and toiletry retailing (5251)
 - Other retailing
 - Antique and used good retailing (5252)
 - Garden supplies retailing (5253)
 - Flower retailing (5254)
 - Watch and jewellery retailing (5255)
 - Retailing n.e.c. (5259)



SCOPE AND COVERAGE (continued)

- Hospitality and Services
 - Hotels and licensed clubs
 - Pubs, taverns and bars (5720)
 - Clubs (Hospitality) (5740)
 - Cafes and restaurants (5730)
 - Selected services
 - Video hire outlets (9511)
 - Hairdressing and beauty salons (9526)

DEFINITION OF TURNOVER

4 Turnover includes retail sales; wholesale sales; takings from repairs, meals and hiring of goods (except for rent, leasing and hiring of land and buildings); and commissions from agency activity (e.g. commissions received from collecting dry cleaning, selling lottery tickets, etc.) and net takings from gaming machines etc.

SEASONAL ADJUSTMENT

5 Seasonal adjustment is a means of removing the estimated effects of normal seasonal variation from the series so that the effects of other influences can be more clearly recognised.

6 In the seasonal adjustment of the turnover estimates, account has been taken of both normal seasonal factors and 'trading-day' effects (arising from the varying length of each month and the varying numbers of Sundays, Mondays, Tuesdays, etc. in the month). Adjustments are also made for the effects of change in the date of Easter and Australia Day holidays. Seasonal adjustment does not remove from the series the effect of irregular influences (e.g. abnormal weather, industrial disputes). The seasonally adjusted estimates still reflect the sampling and non-sampling errors to which the original estimates are subject.

7 The State component series have been seasonally adjusted independently. Therefore, the adjusted components may not add to the Australian Group totals.

8 As happens with all seasonally adjusted series, the seasonal factors are reviewed annually to take account of each additional year's data. For Retail Trade, the results of the latest review are shown in the July issue each year.

TREND ESTIMATES

9 The smoothing of seasonally adjusted series to create trend estimates is a means of reducing the impact of the irregular component of the series. The monthly trend estimates are derived by applying a 13-term Henderson-weighted moving average to the respective seasonally adjusted series. These trend series are used to analyse the underlying behaviour of the series over time. In the case of the quarterly constant price estimates a 7-term Henderson-weighted moving average is applied.

10 For further information, see *A guide to interpreting Time Series – Monitoring 'Trends', an Overview* (1348.0) or contact the Assistant Director, Time Series Analysis on (06) 252 6345.

CONSTANT PRICE STATISTICS

11 To enable analysis of the movement of retail activity in 'real' terms, estimates of retail turnover at constant (average 1989–90) prices are compiled and published each quarter. Constant price retail turnover series are derived by deflating the original current price series of retail turnover by specially compiled indexes of price change.

RELIABILITY OF ESTIMATES

12 There are two types of error possible in estimates of retail turnover:

Non sampling error which arises from inaccuracies in collecting, recording and processing the data. The most significant of these errors are: misreporting of data items; deficiencies in coverage; non-response; and processing errors. Every effort is made to minimise reporting error by the careful design of questionnaires, intensive training and supervision of interviewers, and efficient data processing procedures.

Sampling error which occurs because a sample, rather than the entire population, is surveyed. One measure of the likely difference resulting from not including all establishments in the survey is given by the standard error, see below.

STANDARD ERRORS

13 Seasonally adjusted, trend and constant price estimates are also subject to sampling variability. For seasonally adjusted estimates, the standard errors are approximately the same as for the original estimates. For trend estimates, the standard errors are likely to be smaller. For constant price estimates, the standard errors may be up to 10 per cent higher than those for the corresponding current price estimates because of the sampling variability contained in the prices data used to deflate the current price estimates.

14 To assist users in assessing the reliability of estimates, each data series has been given a grading of A to D. Where:

- A represents a relative standard error on level of less than 2 per cent. The published estimates are highly reliable for movement analysis;
- B represents a relative standard error on level between 2 and 5 per cent, meaning the estimate is reliable for movement analysis purposes;
- C represents a relative standard error on level between 5 and 10 per cent, meaning users are advised to exercise some caution in interpreting movements for such series; and
- D represents a relative standard error on level greater than 10 per cent (mainly affects unpublished state by industry series).

15 The table below provides an indicator of reliability for key retail turnover estimates.

	Food retailing	Department stores	Clothing and soft good retailing	Household good retailing	Recreational good retailing	Other retailing	Hospitality and services	Total
NSW	B	A	B	C	C	C	C	A
Vic	B	A	B	C	C	C	C	A
Qld	B	A	B	C	C	C	C	A
SA	B	A	B	C	C	C	C	A
WA	B	A	B	C	C	C	C	A
Tas	B	—	B	C	C	—	C	B
NT	B	—	B	C	C	—	C	B
ACT	B	A	B	C	C	C	C	A
Australia	A	A	A	B	B	B	B	A

UNPUBLISHED DATA

16 The Retail Survey Special Data Service provides additional retail trade statistics which include further State industry dissections through to 'top ten' industry reports. For more information, contact the Retail Trade Special Data Services manager on (06) 252 5220.

RELATED PUBLICATIONS

17 Current publications produced by the ABS are listed in the *Catalogue of Publications and Products, Australia* (1101.0). The ABS also issues, on Tuesdays and Fridays, a *Publications Advice* (1105.0) which lists publications to be released in the next few days. The Catalogue and Publications Advice are available from any ABS office.

SYMBOLS AND OTHER USAGES

n.p. not available for publication, but included in totals
 r revised

FOR MORE INFORMATION . . .

The ABS publishes a wide range of information on Australia's economic and social conditions. A catalogue of publications and products is available from any of our offices (see below).

INFORMATION CONSULTANCY SERVICES

Special tables or in-depth data investigations are provided by the ABS Information Consultancy Service in each of our offices (see below).

ELECTRONIC DATA SERVICES

A large range of data is available via on-line services, diskette, magnetic tape, tape cartridge and CD ROM. For more details about our electronic data services, contact any ABS office (see below).

BOOKSHOP AND SUBSCRIPTIONS

There are over 500 titles available from the ABS Bookshops in each of our offices. You can also receive any of our publications on a regular basis. Join our subscription mailing service and have your publications mailed to you in Australia at no additional cost. Telephone our Publications Subscription Service toll free Australia wide on 008 0206 08.

ABS EMAIL ADDRESSES

Keylink STAT.INFO/ABS
X.400 (C:AU,A:TELMEMO,O:ABS,SN:INFO,FN:STAT)
Internet STAT.INFO@ABS. TELEMEMO.AU

GENERAL SALES AND INQUIRIES

■ Sydney 02 268 4611 ■ Adelaide 08 237 7100
■ Melbourne 03 615 7000 ■ Hobart 002 20 5800
■ Brisbane 07 222 6351 ■ Darwin 089 43 2111
■ Perth 09 360 5140 ■ Canberra 06 252 6007

■ Information Services, ABS
PO Box 10, Belconnen ACT 2616



2850100011943
ISSN 1032-3651

RRP \$13.00



© Commonwealth of Australia 1995