



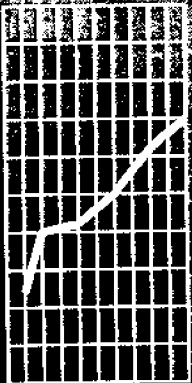
1995-96

EMBARGO: 11:30 AM (CANBERRA TIME) MON 23 JUNE 1997

Agriculture

New South Wales

Statistics



NOTES

SYMBOLS AND OTHER USAGES

ha	hectares
kg	kilograms
km	kilometres
n.a.	not available
n.c.	not collected
n.p.	not published
n.y.a.	not yet available
r	figure or series revised since previous issue
SE%	percentage standard error
t	tonnes
*	SE% greater than 100. Estimate included for completeness. Sampling variability too high for most practical purposes.
**	Where an estimate is small compared to previous years, the relative standard error may be a misleading indicator of the reliability of the estimate.
—	nil or rounded to zero

INQUIRIES

For further information about statistics in this publication and the availability of related unpublished statistics, contact Helen Gardiner on Sydney (02) 9268 4562 or any ABS State office.

For information about other ABS statistics and services, please refer to the back of this publication.

Gregory W. Bray
Regional Director

CONTENTS

	Page
EDITORIAL	
Summary of findings	6
TABLES	
Structure of agricultural industry	
1 Establishments by industry, EVAO \$5,000 and over, at 31 March	17
2 Establishments by industry, EVAO \$22,500 and over, at 31 March	18
3 Establishments with agricultural activity, Statistical Divisions, EVAO \$5,000 & over	19
4 Establishments with agricultural activity, Statistical Divisions, EVAO \$22,500 & over	19
5 Establishments by industry, by EVAO range, at 31 March 1996	20
6 Establishments by industry, by area, at 31 March 1996	22
Land management	
7 Area and land use of establishments with agricultural activity, at 31 March 1996	25
8 Crop stubble disposal, year ended 31 March 1996	26
9 Cultivation of broadacre crops, year ended 31 March 1996	26
10 Planting of trees, year ended 31 March 1996	27
11 Fencing, year ended 31 March 1996	28
12 Fertiliser usage, year ended 31 March 1996	29
13 Soil conditioners, year ended 31 March 1996	29
14 Maintenance and management of pastures, year ended 31 March 1996	30
15 Irrigation area and scheduling method, year ended 31 March 1996	30
Crops and pastures	
16 Cereals for grain, year ended 31 March 1996	31
17 Legumes for grain, year ended 31 March 1996	33
18 Cereals and pastures for hay, year ended 31 March 1996	34
19 Oilseeds, year ended 31 March 1996	36
20 Other crops, year ended 31 March 1996	37
21 Gross value of selected crops and pastures	38
22 Establishments by area of principal grains sown and production	39
23 Establishments growing cereals for grain, year ended 31 March 1996	41
24 Cereal crop forecast for all purposes, year ended 31 March 1997	41
Horticulture	
25 Citrus and pome fruit, year ended 31 March 1996	42
26 Stone fruit, year ended 31 March 1996	44
27 Other fruit and nuts, year ended 31 March 1996	46
28 Tropical and berry fruit, year ended 31 March 1996	47
29 Gross value of citrus, pome and other fruit	49
30 Grapes, year ended 31 March 1996	49
31 Vegetables for human consumption, years ended 31 March	50
32 Vegetables for human consumption, Statistical Divisions, year ended 31 March 1996	52
33 Gross value of vegetables for human consumption	56
34 Area of nurseries, cut flowers and cultivated turf, year ended 31 March 1996	57
35 Area of shade and glasshouses, year ended 31 March 1996	57
36 Total purchase and sales value of plants, year ended 31 March 1996	58

CONTENTS *continued*

Page

Livestock and livestock products

37	Meat cattle numbers, at 31 March 1996	59
38	Establishments with meat cattle, at 31 March 1996	59
39	Number of establishments and meat cattle, by herd size, at 31 March	60
40	Milk cattle numbers, at 31 March 1996	61
41	Establishments with milk cattle, at 31 March 1996	61
42	Number of establishments and milk cattle, by herd size, at 31 March	62
43	Number of sheep and lambs, at 31 March 1996	63
44	Establishments with sheep and lambs, at 31 March 1996	63
45	Number of establishments and sheep and lambs, by flock size, at 31 March ..	64
46	Lambing, year ended 31 March 1996	65
47	Pig numbers and number of establishments, at 31 March 1996	66
48	Number of establishments and pigs, by herd size, at 31 March	67
49	Poultry, number on holding, at 31 March 1996	68
50	Poultry, number disposed of, and egg production, year ended 31 March 1996	69
51	Establishments with and number of deer and horses, at 31 March 1996	70
52	Sales of livestock, year ended 31 March 1996	71
53	Livestock slaughtering and products, years ended 31 March	72
54	Gross value of livestock products and other disposals	73
55	Beekeeping, summary statistics, years ended 30 June	74

Farm finances -

56	Selected financial statistics, farm businesses, by industry, aggregates	75
57	Selected financial statistics, farm businesses, aggregates and averages	79

INFORMATION

Explanatory notes	81
Map	85

CONTENTS *continued*

Page

GRAPHS

Wheat, years ended 31 March	8
Barley, years ended 31 March	8
Rice production, years ended 31 March	9
Canola, years ended 31 March	9
Safflower, years ended 31 March	10
Soybeans, years ended 31 March	10
Sunflower, years ended 31 March	10
Cotton, years ended 31 March	11
Orange production, years ended 31 March	12
Apple production, years ended 31 March	12
Potatoes, years ended 31 March	13
Meat cattle, at 31 March	14
Milk cattle, at 31 March	14
Sheep and lambs, at 31 March	15
Pigs, at 31 March	15

SUMMARY OF FINDINGS

INTRODUCTION

The 1995-96 season was notable for the breaking of the drought, which had devastated grain production in the 1994-95 season. Of the major grain crops, only rice was adversely affected by weather in the 1995-96 season, with the cold summer in the southern rice growing regions cutting average yields. Wheat, barley, triticale, oilseeds and other broadacre crops all had a good season. Wheat and barley prices were strong and the price outlook at the start of the season was sound. This, combined with adequate rainfall, led to major increases in the area planted to grain cereals. The breaking of the drought and strong demand led to further expansion in the grape growing industry, particularly grapes for winemaking. Meat cattle prices were depressed during 1995-96, wool prices continued to fall. However, fat lamb prices were buoyant.

STRUCTURE OF AGRICULTURAL INDUSTRY

From 31 March 1995 to 31 March 1996, there was a small increase (0.5%) in the number of establishments with agricultural activity. The total at 31 March 1996 (42,498) included 493 units classified to ANZSIC other than Subdivision 01 Agriculture. There were 427 establishments unclassified at 31 March 1996. Of the 42,498 establishments with an estimated value of agricultural output (EVAO) of \$5,000 or more at census selection, 32,842 (77.3%) had an EVAO of \$22,500 or more. There were 10,574 (24.9%) establishments with an EVAO of \$5,000 or more classified to beef cattle farming; 5,413 (51.2%) of these had an EVAO of \$22,500 or more.

Main industries according to establishment counts were:

	<i>Number</i>	<i>% of establishments with agricultural activity</i>
Beef cattle farming	10 574	24.9
Grain-sheep/beef cattle farming	7 254	17.1
Sheep farming	5 171	12.2
Sheep-beef cattle farming	4 779	11.2

In both relative and absolute terms, the greatest change from 1995 to 1996 was the increase in establishments classified to grain growing, from 1,979 to 3,346 (69.1%). This was a reflection of the breaking of the drought that had existed over most of NSW (see table 1).

Of the 10,574 establishments classified to beef cattle farming, there were 9,497 (89.8%) with an EVAO of less than \$100,000.

There were 2,214 (5.2%) establishments with an EVAO of \$500,000 or more at 31 March 1996. These large establishments, in EVAO terms, were concentrated in the grain growing industry (22.5%), grain-sheep/beef cattle farming (18.2%) and cotton growing (15.6%). At 31 March 1996, there were 465 establishments classified to the cotton growing industry; 346 (74.4%) of these establishments had an EVAO of \$500,000 or more. No other industry approached this concentration in EVAO terms (see table 5).

SUMMARY OF FINDINGS *continued*

In area terms, just over a quarter of establishments had less than 100 ha and a further 33.8% had areas in the range 100 to 499 ha. There were 17 establishments with areas of 100,000 ha or more. Most were in the sheep and beef cattle farming industries (see table 6).

LAND MANAGEMENT

At 31 March 1996, agricultural establishments occupied 61,017,000 ha (76.2%) of the total area of NSW, an increase of 1.2% on the total area of agricultural establishments at 31 March 1995. The area of cereal crops was 4,096,000 ha, an increase of 50.3% on the area of cereal crops in 1995 (see table 7).

During 1995-96, the main method of crop stubble disposal was to plough it in (1,246,000 ha). Burning was used on 460,300 ha, grazing, baling and fire harrowing on 450,600 ha and mulching on 348,400 ha. Direct drilling (i.e. stubble left intact) was used on 325,400 ha (see table 8).

Trees for timber were planted on 5,300 ha of cleared land and trees for other purposes on 10,700 ha. Total tree plantings during 1995-96 were 2.4 million with 32.5% of these trees planted for timber and pulp purposes (see table 10).

NSW farmers erected 16,750 km of fencing during 1995-96 to isolate and protect land. Most of this fencing was to protect areas of planted trees and shrubs (10,500km). There were 2,900 km to protect areas of remnant native vegetation (see table 11).

In 1995-96, the total area irrigated in NSW was 643,900 ha. The most frequently used method of determining when to irrigate was local knowledge (see table 15).

CROPS AND PASTURES

The main cereals crops grown for grain in NSW were wheat and barley; both showed major increases in area and production with the breaking of the drought during the 1995-96 season.

WHEAT

The area planted to wheat in 1995-96 was 2,328,200 ha, 63.5% more than in 1994-95. Production was 4,508,400 tonnes, over five times the 1994-95 crop. Average yield in 1995-96 was 1.9 t/ha compared with a 1994-95 average of 0.6 t/ha. The North Western Statistical Division (SD) accounted for 29.8% of wheat area and 23.8% of wheat production. The other main wheat regions in terms of production were Northern SD (21.5%), Murrumbidgee SD (20.1%) and Central West SD (17.7%) (see table 16).

In 1995-96, wheat for grain was grown by 9,968 farm establishments, 27.4% more than in 1994-95. During 1995-96, 366 (3.7%) establishments grew wheat crops of 1,000 ha or more and accounted for 24.5% of wheat produced. The median wheat crop area in 1995-96 was 105 ha (see table 22).

SUMMARY OF FINDINGS *continued*

WHEAT, YEARS ENDED 31 MARCH

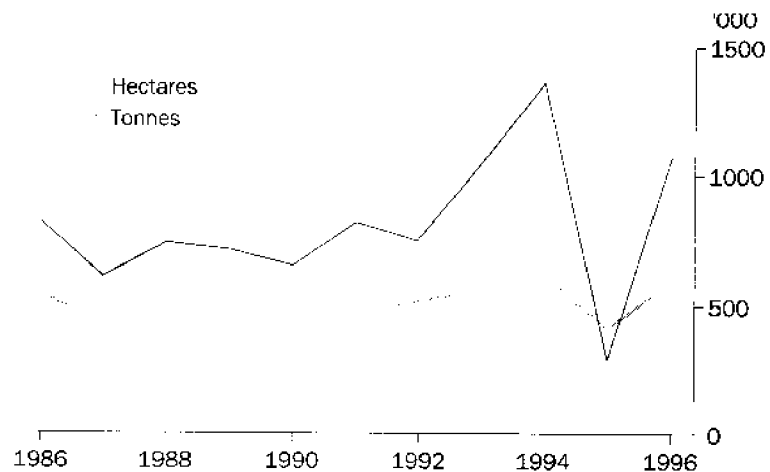


BARLEY

Barley for grain was grown by 4,999 establishments on 593,200 ha in 1995-96. The area grown was 44.8% more than in 1994-95 and production of 1,073,600 tonnes was more than treble the 1994-95 crop. Average yield in 1995-96 was 1.8 t/ha compared with a 1994-95 average of 0.7 t/ha.

The main barley growing regions were Northern SD (28.1% of area and 25.6% of production), Central West SD (19.9% of area and 20.5% of production) and Murrumbidgee SD (19.3% of area and 22.8% of production) (see tables 16 and 22).

BARLEY, YEARS ENDED 31 MARCH



SUMMARY OF FINDINGS *continued*

OATS

The area of oats for grain grown during 1995–96 was 505,100 ha, 34.5% more than in 1994–95. Production was 711,200 tonnes, 260.5% above 1994–95. The average yield in 1995–96 was 1.4 t/ha compared with the 1994–95 average yield of 0.5 t/ha (see table 16).

RICE

Rice for grain was grown in the Murrumbidgee and Murray SDs on 136,300 ha in 1995–96 for total production of 965,100 tonnes. The 1995–96 area was 14.7% greater than the 1994–95 area, but production was down 5.0% (see table 16).

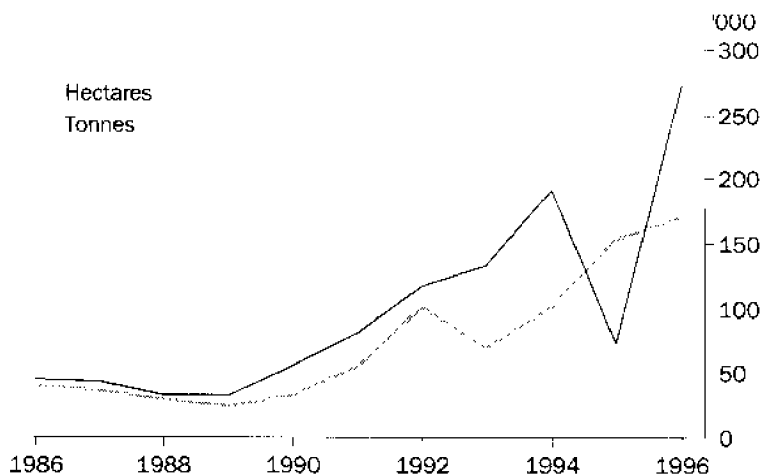
RICE PRODUCTION, YEARS ENDED 31 MARCH



OILSEEDS

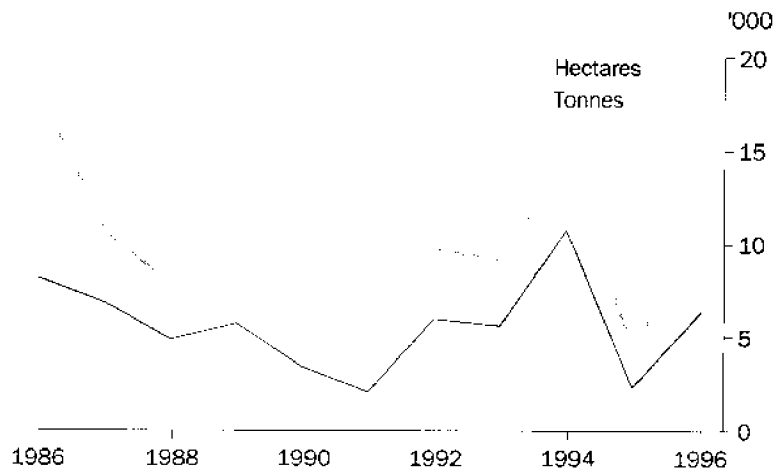
The 1995–96 area of oilseeds grown was 226,500 ha, 4.5% more than in 1994–95. The main oilseed growing regions were the Murrumbidgee and Central West SDs. The principal oilseed crop was canola (75.1% of total oilseed area). Sunflower was the other significant oilseed crop, grown mainly in the Northern SD in 1995–96 (see table 19).

CANOLA, YEARS ENDED 31 MARCH

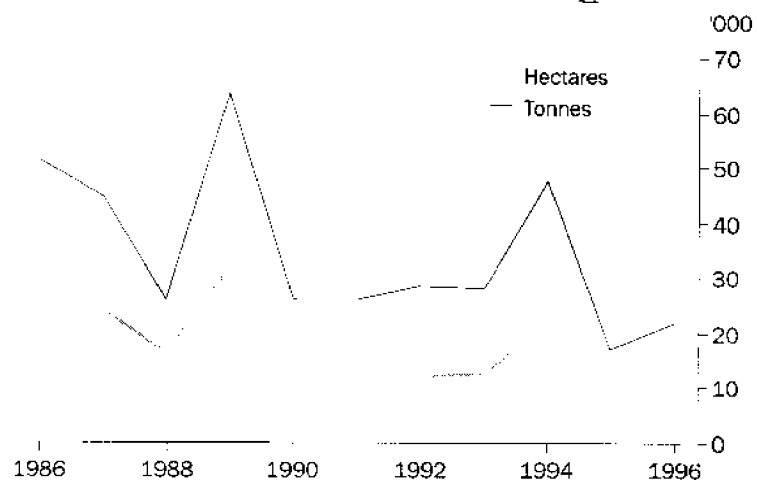


SUMMARY OF FINDINGS *continued*

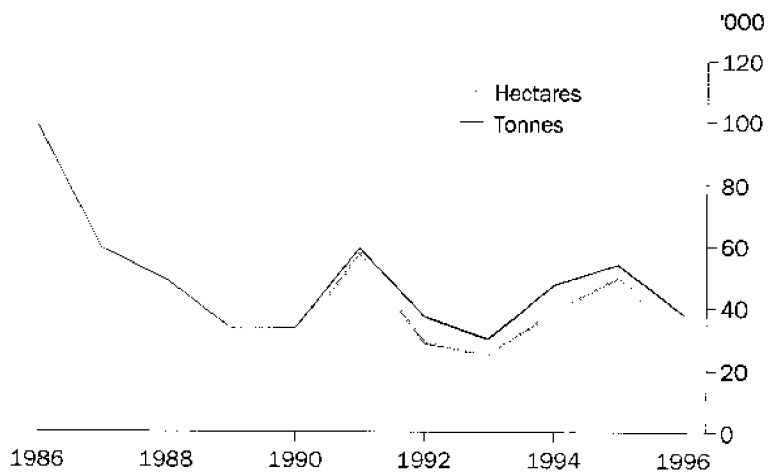
SAFFLOWER, YEARS ENDED 31 MARCH



SOYBEANS, YEARS ENDED 31 MARCH



SUNFLOWER, YEARS ENDED 31 MARCH

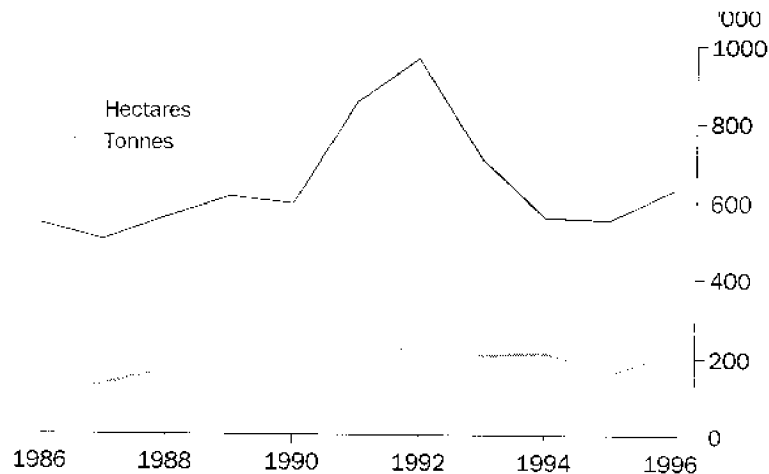


SUMMARY OF FINDINGS *continued*

COTTON

In 1995-96, 201,000 ha of cotton were grown for a crop of 629,500 tonnes at an average yield of 3.1 t/ha. The 1995-96 area was 28.2% more than in 1994-95 and production was 14.4% higher (see table 20).

COTTON, YEARS ENDED 31 MARCH



SUGAR CANE

In 1995-96, total production of sugar cane for crushing was 1,922,700 tonnes, 5.3% higher than 1994-95 production (see table 20). There were two SDs which grew sugar cane for crushing (Richmond-Tweed, 12,500 ha and Mid-North Coast, 5,300 ha).

HORTICULTURE

ORANGES

The 1995-96 season saw a further fall in orange production. The harvest of 177,700 tonnes was 15.4% less than in 1994-95. Trees six years and over numbered 3,183,900 at 31 March 1996, 5.5% above the 1994-95 season number. The total number of trees less than six years decreased from 619,800 to 532,400, a fall of 14.1%. The two principal regions for oranges (in terms of total tree numbers) were Murrumbidgee SD (326,100 trees under six years and 1,990,600 trees six years and over) and Murray SD (155,100 trees under six years and 826,600 trees six years and over). Murrumbidgee SD produced 61.8% of the orange crop and Murray SD 29.5% (see table 25).

SUMMARY OF FINDINGS *continued*

ORANGE PRODUCTION, YEARS ENDED 31 MARCH



APPLES

Total apple production in 1995-96 was 61,400 tonnes, 22.4% lower than the 1994-95 crop. In 1995-96, average yield per tree was 48.4 kg compared to the 1994-95 average of 62.4 kg/tree. The two main apple producing regions were Central West SD (46.4% of total production) and Murrumbidgee SD (42.9%) (see table 25).

APPLE PRODUCTION, YEARS ENDED 31 MARCH



GRAPES

The area of grapes continued to increase in 1995-96. The area of bearing grapes at harvest of the 1995-96 crop was 13,800 ha compared with 12,600 ha for the 1994-95 harvest. The area of non-bearing grapes covered 3,100 ha compared with 1,800 ha the previous year.

Total grape production in 1995-96 was 225,100 tonnes, up from 139,000 tonnes in 1994-95. Grape production for winemaking was 167,600 tonnes, an increase of 60.1% on the previous year. The main area of grape production for winemaking was Murrumbidgee SD which produced 54.3% of these grapes (see table 30).

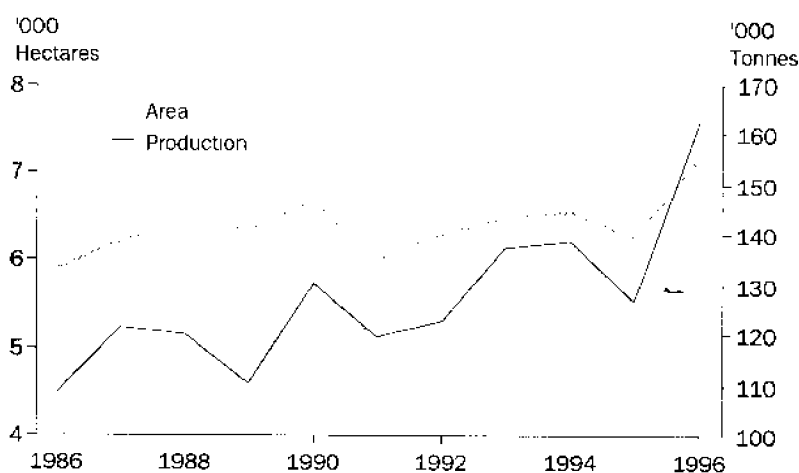
SUMMARY OF FINDINGS *continued*

Grapes for drying were produced only in the Murray SD. The production of 46,687 tonnes was 20.7% of the total grapes produced in NSW.

POTATOES

In 1995-96, there were 7,200 ha of potatoes grown for a crop of 162,500 tonnes, whereas the previous year the area of potatoes grown was 6,300 ha for a crop of 126,800 tonnes. Murray SD accounted for 39.6% of area grown and 41.6% of production and Murrumbidgee SD for 31.1% of area grown and 29.3% of production (see tables 31 and 32).

POTATOES, YEARS ENDED 31 MARCH



LIVESTOCK AND LIVESTOCK PRODUCTS

MEAT CATTLE

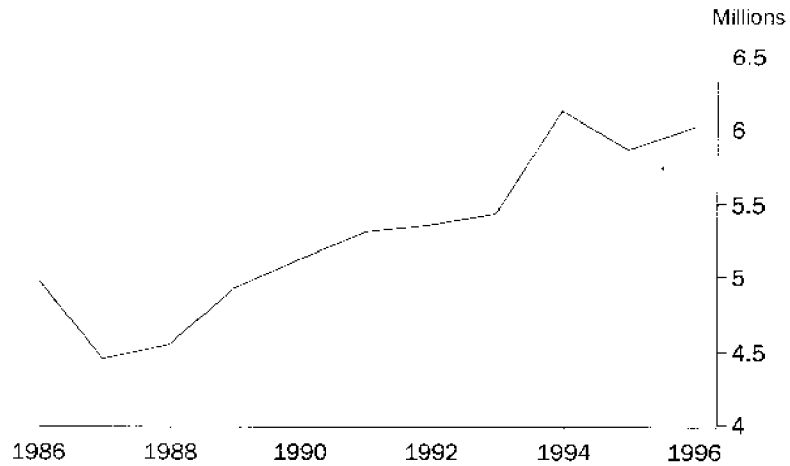
During 1995-96, with the breaking of the drought, there was some recovery in meat cattle numbers. At 31 March 1996, the meat cattle herd was 6,019,100, 2.6% above the 31 March 1995 figure. Meat cattle were found on 28,323 establishments with agricultural activity at 31 March 1996.

The Northern SD accounted for 27.6% of the total meat cattle herd and the North Western SD for 13.1%.

The median meat cattle herd size at 31 March 1996 was 108. At 31 March 1996, 725 (2.6%) establishments reported meat cattle herds numbering 1,000 or more. These establishments accounted for 23.6% of the total herd. Just over a quarter of establishments with meat cattle had a herd size of under 50. These establishments accounted for only 3.1% of the total herd (see table 39).

SUMMARY OF FINDINGS *continued*

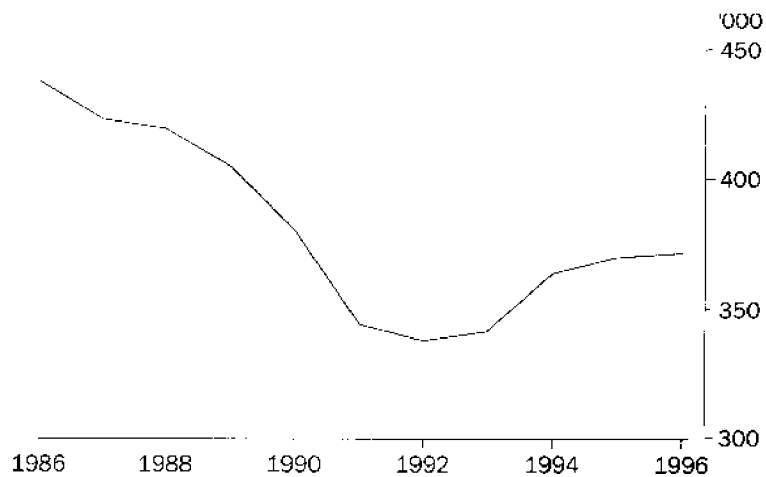
MEAT CATTLE, AT 31 MARCH



MILK CATTLE

The milk cattle herd numbered 371,200 at 31 March 1996, fractionally above the herd size of the previous year. Cows in milk and dry made up 63.4% of the herd. Mid-North Coast, Hunter and Murray SDs were the main dairying regions. At 31 March 1996, there were 60 (2.4%) establishments with milk cattle herds of 500 or more and these accounted for 12.6% of total milk cattle. The median milk cattle herd size at 31 March 1996 was 122 (see tables 40, 41 and 42).

MILK CATTLE, AT 31 MARCH



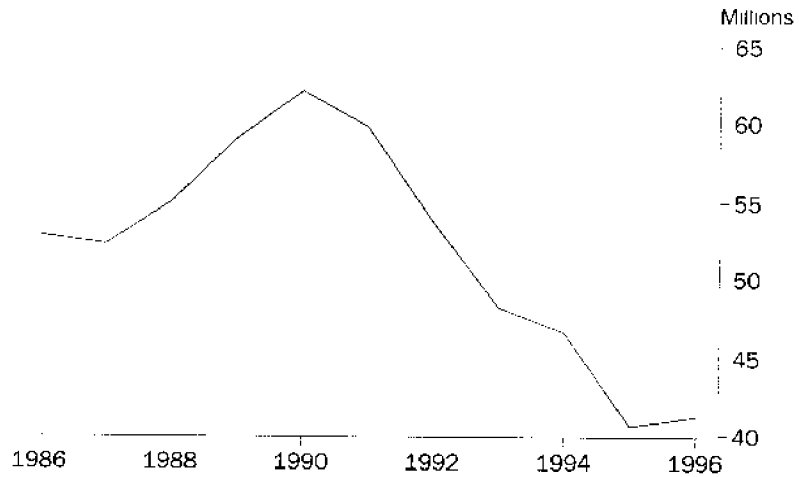
SHEEP AND LAMBS

At 31 March 1996, there were 19,937 establishments with sheep and lambs. The NSW sheep flock at 31 March 1996 was 41,090,200, a 1.4% increase on the 1995 flock size. The North Western SD had 19.2% of the flock, Central West SD 17.6% and South Eastern SD 16.4% (see table 43). At 31 March 1996, there were 395 (2.0%) establishments with flocks of 10,000 and over. These establishments accounted for 14.7% of the flock. Of the establishments with sheep and lambs, 23.2% had flocks of less than 500 and these accounted for only 2.7% of the total flock. The median flock size at 31 March 1996 was 1,290 (see tables 43, 44 and 45).

SUMMARY OF FINDINGS *continued*

During 1995-96, there were 13,596,200 lambs marked from 17,547,400 ewes mated giving a marking ratio of 77.5%. The 1995-96 marking ratio was 6.4 percentage points higher than the previous year, a reflection of better feed conditions with the breaking of drought conditions (see table 46).

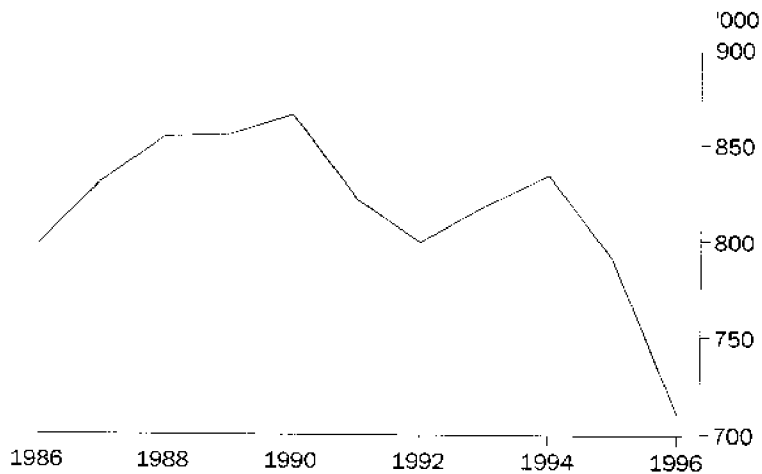
SHEEP AND LAMBS, AT 31 MARCH



PIGS

Pigs were run on 1,139 establishments at 31 March 1996 (13.8% less than the previous year). The total pig herd was 710,300, just over 80,000 less than at 31 March 1995. Almost 10.0% of establishments with pigs had herds of 1,000 or more at 31 March 1996 (see tables 47 and 48).

PIGS, AT 31 MARCH



VALUE OF AGRICULTURAL COMMODITIES PRODUCED

At the time of publication, preliminary figures only were available for the gross value of agricultural commodities produced in the season 1995-96. These figures show that wheat replaced rice as the leading crop in terms of value of production. Preliminary estimates show that the value of wheat production was \$1,127.2m, an increase of 458.3% from 1994-95. This rise was due to a favourable season and strong export wheat prices.

Wheat was the principal contributor to the value of cereal grain production accounting for 59.2% of the total, followed by rice which contributed 13.0% of the total. Barley also showed a significant increase, 242.6% on the 1994-95 season (see table 21).

The gross value of cotton for 1995-96 was \$661.1m. This was an increase of 11.1% from \$595.2m for 1994-95.

In relation to fruit, preliminary figures show that grapes remained the leading individual fruit in value terms at \$112.6m (an increase of 26.4%), followed by oranges with a value of production of \$67.6m. Next highest were apples contributing \$59.2m followed by bananas production valued at \$52.6m (see table 29).

For 1995-96, potatoes were the biggest contributor to the total value of vegetables produced with \$42.7m (20.0%), followed by mushrooms with \$40.7m (see table 33).

Preliminary estimates show that the gross value of livestock slaughterings for 1995-96 was \$1,756.8m, a decrease of 8.4% from the 1994-95 season (\$1,918.3m). Cattle and calf slaughterings represented 49.1% of this value followed by poultry, sheep and lambs, and pigs which represented 24.8%, 15.1% and 10.7% respectively (see table 54).

The preliminary figure for the 1995-96 gross value of wool production was \$874.6m representing a decrease of 26.3% over the previous year's figure (\$1,186.2m). The value of milk production increased by 16.4% to \$507.3m (see table 54).

1

ESTABLISHMENTS BY INDUSTRY, EVAO \$5,000 and over, at 31 March(a)

Industry class		1994	1995	1996
ANZSIC code	Industry of establishment	no.	no.	no.
0111	Plant nurseries	681	591	679
0112	Cut flower and flower seed growing	245	200	215
0113	Vegetable growing	755	678	701
0114	Grape growing	709	659	788
0115	Apple and pear growing	233	219	205
0116	Stonefruit growing	446	476	471
0117	Kiwi fruit growing	26	26	30
0119	Fruit growing n.e.c.	1 900	1 628	1 651
0121	Grain growing	2 854	1 979	3 346
0122	Grain-sheep/beef cattle farming	6 669	6 091	7 254
0123	Sheep-beef cattle farming	5 380	5 547	4 779
0124	Sheep farming	5 617	6 281	5 171
0125	Beef cattle farming	10 543	11 195	10 574
0130	Dairy cattle farming	2 128	2 167	2 047
0141	Poultry farming (meat)	329	316	331
0142	Poultry farming (eggs)	151	144	145
0151	Pig farming	425	442	369
0152	Horse farming	638	556	558
0153	Deer farming	119	111	99
0159	Livestock farming n.e.c.	876	816	973
0161	Sugar cane growing	458	438	462
0162	Cotton growing	425	405	465
0169	Crop and plant growing n.e.c.	254	304	265
Total (ANZSIC Code 01)		41 861	41 269	41 578
02	Services to agriculture; hunting and trapping	33	37	69
03	Forestry and logging	7	5	13
04	Commercial fishing	1	1	2
Total (ANZSIC Division A)		41 902	41 312	41 662
All other ANZSIC Divisions		289	283	409
Unclassified		626	693	427
Total all industries		42 817	42 288	42 498

(a) Number of establishments with an EVAO of \$5,000 or more at the time of selection in the agricultural census. See explanatory note 4 on page 81.

2

ESTABLISHMENTS BY INDUSTRY, EVAO \$22,500 and over, at 31 March

Industry class		1994	1995	1996
ANZSIC code	Industry of establishment	no.	no.	no.
0111	Plant nurseries	608	519	581
0112	Cut flower and flower seed growing	234	168	178
0113	Vegetable growing	607	535	568
0114	Grape growing	584	551	729
0115	Apple and pear growing	208	191	180
0116	Stonefruit growing	335	353	364
0117	Kiwi fruit growing	14	12	15
0119	Fruit growing n.e.c.	1 463	1 309	1 311
0121	Grain growing	2 774	1 837	3 190
0122	Grain-sheep/beef cattle farming	6 442	5 784	6 959
0123	Sheep-beef cattle farming	4 692	4 894	4 140
0124	Sheep farming	4 143	4 998	4 045
0125	Beef cattle farming	5 474	6 012	5 413
0130	Dairy cattle farming	2 086	2 098	1 995
0141	Poultry farming (meat)	321	311	320
0142	Poultry farming (eggs)	144	134	133
0151	Pig farming	378	396	330
0152	Horse farming	370	280	318
0153	Deer farming	115	101	89
0159	Livestock farming n.e.c.	419	424	594
0161	Sugar cane growing	449	426	443
0162	Cotton growing	417	405	463
0169	Crop and plant growing n.e.c.	203	239	210
Total (ANZSIC Code 01)		32 480	31 977	32 568
02	Services to agriculture; hunting and trapping	18	19	37
03	Forestry and logging	2	2	3
04	Commercial fishing	1	1	1
Total (ANZSIC Division A)		32 501	31 999	32 609
All other ANZSIC Divisions		168	165	233
Unclassified		3	—	—
Total all industries		32 672	32 164	32 842

3

ESTABLISHMENTS WITH AGRICULTURAL ACTIVITY, Statistical Divisions, EVAO \$5,000 & over(a)(b)

	1994	1995	1996
Statistical division	no.	no.	no.
Sydney	1 928	1 862	1 860
Hunter	2 996	2 961	2 967
Illawarra	955	922	933
Richmond-Tweed	3 222	3 070	3 121
Mid-North Coast	3 354	3 270	3 239
Northern	6 802	6 732	6 707
North Western	4 420	4 402	4 413
Central West	5 750	5 703	5 724
South Eastern	4 455	4 461	4 483
Murrumbidgee	4 673	4 660	4 754
Murray	3 963	3 953	4 004
Far West	299	292	293
New South Wales	42 817	42 288	42 498

(a) See explanatory note 4 on page 81.

(b) Figures are at 31 March.

4

ESTABLISHMENTS WITH AGRICULTURAL ACTIVITY, Stat. Divisions, EVAO \$22,500 & over(a)

	1994	1995	1996
Statistical division	no.	no.	no.
Sydney	1 376	1 251	1 311
Hunter	1 908	1 884	1 886
Illawarra	546	536	527
Richmond-Tweed	2 007	1 938	1 986
Mid-North Coast	2 004	1 915	1 923
Northern	5 391	5 293	5 474
North Western	3 776	3 748	3 794
Central West	4 633	4 589	4 659
South Eastern	3 133	3 196	3 200
Murrumbidgee	4 141	4 094	4 262
Murray	3 465	3 437	3 533
Far West	292	283	287
New South Wales	32 672	32 164	32 842

(a) Figures are at 31 March.

ESTIMATED VALUE OF AGRICULTURAL OPERATIONS(\$).....

Industry class		Less than 5,000(a)	5,000 to 22,499	22,500 to 49,999	50,000 to 99,999
ANZSIC code	Industry of establishment	no.	no.	no.	no.
0111	Plant nurseries	7	91	112	169
0112	Cut flower and flower seed growing	3	34	37	74
0113	Vegetable growing	22	111	139	116
0114	Grape growing	3	56	99	157
0115	Apple and pear growing	—	25	28	35
0116	Stonefruit growing	10	97	115	98
0117	Kiwi fruit growing	—	15	8	6
0119	Fruit growing n.e.c.	34	306	405	429
0121	Grain growing	16	140	200	360
0122	Grain-sheep/beef cattle farming	15	280	850	1 668
0123	Sheep-beef cattle farming	29	610	1 047	1 321
0124	Sheep farming	118	1 008	1 201	1 297
0125	Beef cattle farming	511	4 650	2 779	1 557
0130	Dairy cattle farming	8	44	99	260
0141	Poultry farming (meat)	7	4	4	5
0142	Poultry farming (eggs)	2	10	9	10
0151	Pig farming	2	37	37	60
0152	Horse farming	16	224	171	85
0153	Deer farming	2	8	10	23
0159	Livestock farming n.e.c.	93	286	226	151
0161	Sugar cane growing	—	19	84	142
0162	Cotton growing	2	—	—	2
0169	Crop and plant growing n.e.c.	13	42	63	59
Total (ANZSIC Code 01)		913	8 097	7 723	8 084
02	Services to agriculture; hunting and trapping	7	25	16	6
03	Forestry and logging	3	7	—	2
04	Commercial fishing	1	—	—	—
Total (ANZSIC Division A)		924	8 129	7 739	8 092
All other ANZSIC Divisions		36	140	80	63
Unclassified		427	—	—	—
Total all industries		1 387	8 269	7 819	8 155

(a) See explanatory note 4 on page 81.

ESTIMATED VALUE OF AGRICULTURAL OPERATIONS (\$)

Industry class		100,000 to 199,999	200,000 to 499,999	500,000 or more	Total establishments
ANZSIC code	Industry of establishment	no.	no.	no.	no.
0111	Plant nurseries	144	106	50	679
0112	Cut flower and flower seed growing	46	14	7	215
0113	Vegetable growing	122	99	92	701
0114	Grape growing	253	181	39	788
0115	Apple and pear growing	39	48	30	205
0116	Stonefruit growing	83	53	15	471
0117	Kiwi fruit growing	—	1	—	30
0119	Fruit growing n.e.c.	308	144	25	1 651
0121	Grain growing	958	1 173	499	3 346
0122	Grain-sheep/beef cattle farming	2 292	1 747	402	7 254
0123	Sheep-beef cattle farming	1 099	582	91	4 779
0124	Sheep farming	1 011	471	65	5 171
0125	Beef cattle farming	757	257	63	10 574
0130	Dairy cattle farming	706	801	129	2 047
0141	Poultry farming (meat)	25	132	154	331
0142	Poultry farming (eggs)	32	32	50	145
0151	Pig farming	87	88	58	369
0152	Horse farming	45	12	5	558
0153	Deer farming	19	28	9	99
0159	Livestock farming n.e.c.	87	89	41	973
0161	Sugar cane growing	154	60	3	462
0162	Cotton growing	20	95	346	465
0169	Crop and plant growing n.e.c.	35	31	22	265
Total (ANZSIC Code 01)		8 322	6 244	2 195	41 578
02	Services to agriculture; hunting and trapping	5	6	4	69
03	Forestry and logging	1	—	—	13
04	Commercial fishing	—	1	—	2
Total (ANZSIC Division A)		8 328	6 251	2 199	41 662
All other ANZSIC Divisions		45	30	15	409
Unclassified		—	—	—	427
Total all industries		8 373	6 281	2 214	42 498

		AREA OF ESTABLISHMENTS (HECTARES).....				
Industry class		0 to 49	50 to 99	100 to 499	500 to 999	1,000 to 2,499
ANZSIC code	Industry of establishment	no.	no.	no.	no.	no.
0111	Plant nurseries	586	42	39	10	2
0112	Cut flower and flower seed growing	192	9	11	3	—
0113	Vegetable growing	419	66	162	28	21
0114	Grape growing	636	58	82	8	3
0115	Apple and pear growing	124	43	36	2	—
0116	Stonefruit growing	368	53	42	2	6
0117	Kiwi fruit growing	22	5	3	—	—
0119	Fruit growing n.e.c.	1 344	167	124	8	7
0121	Grain growing	33	79	1 190	789	838
0122	Grain-sheep/beef cattle farming	39	117	2 023	2 195	1 947
0123	Sheep-beef cattle farming	56	161	1 553	1 258	1 121
0124	Sheep farming	111	235	1 854	1 196	844
0125	Beef cattle farming	1 190	1 631	4 796	1 566	1 034
0130	Dairy cattle farming	190	395	1 279	134	42
0141	Poultry farming (meat)	259	25	36	9	2
0142	Poultry farming (eggs)	111	11	17	5	1
0151	Pig farming	115	48	143	37	20
0152	Horse farming	259	104	147	25	17
0153	Deer farming	23	20	42	10	4
0159	Livestock farming n.e.c.	653	65	120	69	49
0161	Sugar cane growing	137	142	172	7	2
0162	Cotton growing	6	6	102	89	144
0169	Crop and plant growing n.e.c.	105	49	89	16	6
Total (ANZSIC Code 01)		6 978	3 531	14 062	7 466	6 110
02	Services to agriculture; hunting and trapping	22	10	25	6	4
03	Forestry and logging	1	2	8	—	—
04	Commercial fishing	1	—	1	—	—
Total (ANZSIC Division A)		7 002	3 543	14 096	7 472	6 114
All other ANZSIC Divisions		161	56	137	28	17
Unclassified		173	47	145	22	23
Total all industries		7 336	3 646	14 378	7 522	6 154

		AREA OF ESTABLISHMENTS (HECTARES).....			
Industry class		2,500 to 4,999	5,000 to 9,999	10,000 to 24,999	25,000 to 49,999
ANZSIC code	Industry of establishment	no.	no.	no.	no.
0111	Plant nurseries	—	—	—	—
0112	Cut flower and flower seed growing	—	—	—	—
0113	Vegetable growing	5	—	—	—
0114	Grape growing	—	—	—	—
0115	Apple and pear growing	—	—	—	—
0116	Stonefruit growing	—	—	—	—
0117	Kiwi fruit growing	—	—	—	—
0119	Fruit growing n.e.c.	—	1	—	—
0121	Grain growing	255	101	42	16
0122	Grain-sheep/beef cattle farming	561	222	119	23
0123	Sheep-beef cattle farming	296	113	100	89
0124	Sheep farming	211	160	303	174
0125	Beef cattle farming	233	66	37	17
0130	Dairy cattle farming	6	1	—	—
0141	Poultry farming (meat)	—	—	—	—
0142	Poultry farming (eggs)	—	—	—	—
0151	Pig farming	4	2	—	—
0152	Horse farming	6	—	—	—
0153	Deer farming	—	—	—	—
0159	Livestock farming n.e.c.	8	2	2	4
0161	Sugar cane growing	2	—	—	—
0162	Cotton growing	75	27	11	2
0169	Crop and plant growing n.e.c.	—	—	—	—
Total (ANZSIC Code 01)		1 662	695	815	325
02	Services to agriculture; hunting and trapping	1	1	—	—
03	Forestry and logging	1	1	—	—
04	Commercial fishing	—	—	—	—
Total (ANZSIC Division A)		1 664	697	615	325
All other ANZSIC Divisions		7	2	1	—
Unclassified		9	3	4	1
Total all industries		1 680	702	620	326

AREA OF ESTABLISHMENTS (HECTARES)

Industry class		50,000 to 99,999	100,000 to 199,999	200,000 or more	Total establishments
ANZSIC code	Industry of establishment	no.	no.	no.	no.
0111	Plant nurseries	—	—	—	679
0112	Cut flower and flower seed growing	—	—	—	215
0113	Vegetable growing	—	—	—	701
0114	Grape growing	—	—	—	788
0115	Apple and pear growing	—	—	—	205
0116	Stonefruit growing	—	—	—	471
0117	Kiwi fruit growing	—	—	—	30
0119	Fruit growing n.e.c.	—	—	—	1 651
0121	Grain growing	3	—	—	3 346
0122	Grain-sheep/beef cattle farming	5	3	—	7 254
0123	Sheep-beef cattle farming	26	4	2	4 779
0124	Sheep farming	76	6	1	5 171
0125	Beef cattle farming	3	1	—	10 574
0130	Dairy cattle farming	—	—	—	2 047
0141	Poultry farming (meat)	—	—	—	331
0142	Poultry farming (eggs)	—	—	—	145
0151	Pig farming	—	—	—	369
0152	Horse farming	—	—	—	558
0153	Deer farming	—	—	—	99
0159	Livestock farming n.e.c.	1	—	—	973
0161	Sugar cane growing	—	—	—	462
0162	Cotton growing	3	—	—	465
0169	Crop and plant growing n.e.c.	—	—	—	265
Total (ANZSIC Code 01)		117	14	3	41 578
02	Services to agriculture; hunting and trapping	—	—	—	69
03	Forestry and logging	—	—	—	13
04	Commercial fishing	—	—	—	2
Total (ANZSIC Division A)		117	14	3	41 682
All other ANZSIC Divisions		—	—	—	409
Unclassified		—	—	—	427
Total all industries		117	14	3	42 498

Statistical division	Area of cereal crops(a)	Area of other crops	Area of orchard trees	Area of vegetables
	'000 ha	'000 ha	'000 ha	'000 ha
Sydney	0.9	2 463.1	2.8	1.8
Hunter	40.9	10 069.3	353.6	0.5
Illawarra	0.6	880.6	0.2	0.4
Richmond-Tweed	2.7	20 231.9	6.6	0.5
Mid-North Coast	1.4	9 679.4	0.9	1.0
Northern	937.7	265 645.3	1.0	1.0
North Western	959.0	87 168.2	0.4	0.8
Central West	788.7	78 826.1	3.3	3.6
South Eastern	107.4	21 020.4	3.3	1.0
Murrumbidgee	716.2	143 148.9	11.3	8.0
Murray	538.3	62 116.2	4.1	4.7
Far West	2.0	4 432.4	—	—
New South Wales				
1996	4 095.7	705.7	34.2	23.2
1995	2 725.3	579.6	31.5	20.5
1994	3 448.2	912.5	34.0	22.8

Statistical division	Area of holding	Area of non-agricultural land(b)	Total area (agricultural and non-agricultural land)
	'000 ha	'000 ha	'000 ha
Sydney	88.1	1 125.7	1 213.8
Hunter	1 509.7	1 582.3	3 092.0
Illawarra	130.0	704.5	834.5
Richmond-Tweed	468.4	515.1	983.4
Mid-North Coast	965.4	1 628.5	2 593.9
Northern	7 326.5	2 483.4	9 810.0
North Western	16 626.9	3 323.1	19 950.0
Central West	4 780.2	1 523.3	6 303.5
South Eastern	2 690.6	2 556.7	5 247.3
Murrumbidgee	5 353.8	988.0	6 341.8
Murray	8 076.9	939.8	9 016.7
Far West	13 000.2	1 685.3	14 685.5
New South Wales			
1996	61 016.8	19 055.7	80 072.5
1995r	60 299.8	19 772.7	80 072.5
1994r	61 165.1	18 907.4	80 072.5

(a) Excludes pastures and grasses harvested for hay and seed.

(b) Comprises conserved land, forestry, urban and unused land such as vacant Crown land, commercially unused land on Aboriginal and other Crown reserves and waste land, ephemeral lakes, mangrove swamps, etc.

8

CROP STUBBLE DISPOSAL, Year ended 31 March 1996

AREA OF HOLDING ON WHICH CROP STUBBLE TECHNIQUES WERE USED.....

Statistical division	Stubble was burnt	Stubble removed by grazing, baling or fire harrowing	Stubble was incorporated(a)	Stubble was mulched(b)	Stubble was left intact(c)
	ha	ha	ha	ha	ha
Sydney	3.0	33.9	294.8	142.4	225.0
Hunter	341.0	4 997.7	17 692.7	6 663.6	5 604.6
Illawarra	114.0	266.0	171.0	11.1	91.0
Richmond-Tweed	299.4	849.5	1 894.9	812.5	437.0
Mid-North Coast	97.7	300.9	905.6	771.2	247.5
Northern	49 602.2	90 800.8	399 362.2	155 583.5	94 114.2
North Western	45 907.1	125 475.8	419 523.9	81 370.0	53 092.9
Central West	86 078.1	85 917.1	160 855.4	42 816.4	46 186.3
South Eastern	25 013.8	14 957.3	15 341.7	3 271.0	14 833.5
Murrumbidgee	155 650.8	72 798.1	136 205.8	29 640.9	61 985.1
Murray	97 184.1	54 168.6	93 759.1	27 330.5	48 543.4
Far West	—	—	—	—	—
New South Wales					
1996	460 291.2	450 565.7	1 246 007.1	348 413.1	325 360.5
1995r	236 431.0	n.c.	921 566.7	153 142.7	360 855.1

(a) Farm machinery used to plough stubble into soil.

(b) Farm machinery used to chop or slash stubble into smaller lengths.

(c) No cultivation; crops sown by direct drilling.

9

CULTIVATION OF BROADACRE CROPS, Year ended 31 March 1996

Statistical division	More than two cultivations	One or two cultivations	No cultivation
	ha	ha	ha
Sydney	318.9	311.5	243.0
Hunter	19 655.0	17 013.3	4 961.8
Illawarra	264.0	246.0	362.1
Richmond-Tweed	2 302.7	706.9	755.0
Mid-North Coast	1 164.5	609.6	573.0
Northern	478 224.6	326 931.1	82 690.8
North Western	371 010.4	432 654.6	69 275.5
Central West	308 017.3	322 192.7	56 553.5
South Eastern	16 488.4	48 080.0	28 131.6
Murrumbidgee	280 247.6	239 072.5	75 147.3
Murray	214 379.3	143 326.7	71 476.5
Far West	—	364.0	—
New South Wales	1 692 072.7	1 531 508.9	390 170.1

CLEARED AGRICULTURAL LAND
PLANTED WITH TREES(b).....

SEEDLINGS PLANTED.....

Statistical division	Cleared agricultural land planted with trees		Seedlings planted			
	For timber/pulp ha	Other purposes ha	For timber/pulp '000	ha	Other purposes '000	ha
Sydney	39.3	114.0	1.0	0.3	16.2	92.3
Hunter	235.0	348.1	40.4	61.6	22.1	133.0
Illawarra	362.0	101.9	3.5	3.8	11.7	33.2
Richmond-Tweed	992.5	644.0	232.5	220.1	89.2	97.3
Mid-North Coast	272.5	387.3	68.9	82.6	67.1	77.5
Northern	350.9	1 248.0	11.4	10.8	142.9	561.7
North Western	109.3	751.7	6.1	13.9	320.0	431.9
Central West	915.6	1 373.6	20.4	6.8	290.4	650.2
South Eastern	1 019.6	2 049.7	81.3	88.6	186.0	674.8
Murrumbidgee	202.0	1 560.8	19.2	27.2	133.9	488.6
Murray	834.0	2 076.4	301.9	286.7	351.6	908.7
Far West	—	0.5	—	—	0.1	6.0
New South Wales	5 332.7	10 656.0	786.6	802.4	1 631.2	4 155.2

SEED SOWN

TIMBER HARVESTED ...

Statistical division	Seed sown		Timber harvested	
	kg	ha	Hardwood t	Softwood t
Sydney	101.0	46.1	—	—
Hunter	371.0	79.8	616.0	40.0
Illawarra	100.0	20.0	1 525.0	—
Richmond-Tweed	225.0	1.6	30.0	512.0
Mid-North Coast	146.0	14.6	850.0	84.0
Northern	6.0	7.9	400.0	5.0
North Western	259.0	7.5	3.0	—
Central West	293.4	39.8	43.0	1 500.0
South Eastern	667.2	191.0	1.0	320.0
Murrumbidgee	1 404.5	531.0	4.0	6.0
Murray	138.5	8.3	703.5	32.5
Far West	—	—	—	—
New South Wales	3 711.6	947.6	4 175.5	2 499.5

(a) Data in this table are an aggregation of responding establishments. No imputation has been made for non-responding establishments.

(b) Area of cleared agricultural land planted with trees at 31 March 1996. Includes trees planted during reference and earlier years.

KILOMETRES ERECTED TO ISOLATE.....

Statistical division	Saline areas	Other degraded areas	Creeks and rivers	Remnant native vegetation	Planted trees and shrubs
	km	km	km	km	km
Sydney	3.4	2.5	16.5	54.5	152.9
Hunter	31.5	110.0	219.2	165.3	115.4
Illawarra	11.1	4.6	70.3	30.4	143.0
Richmond-Tweed	15.9	21.3	122.1	506.0	256.6
Mid-North Coast	7.7	24.7	206.6	355.1	230.3
Northern	48.1	151.5	248.3	934.0	1 094.2
North Western	280.1	80.9	171.4	196.2	379.1
Central West	134.0	81.5	195.2	138.2	1 593.0
South Eastern	145.0	116.8	143.6	96.5	2 017.1
Murrumbidgee	167.0	36.4	122.8	256.5	1 762.9
Murray	181.8	36.3	159.6	142.6	2 758.2
Far West	—	—	—	7.5	1.0
New South Wales	1 025.6	666.5	1 675.6	2 882.8	10 503.7

AREA ISOLATED.....

Statistical division	Saline areas	Other degraded areas	Remnant native vegetation	Planted trees and shrubs	Other
	ha	ha	ha	ha	ha
Sydney	—	7.5	133.7	33.2	64.7
Hunter	30.8	383.6	4 893.8	885.1	188.7
Illawarra	2.0	22.9	432.4	291.3	72.7
Richmond-Tweed	152.4	172.7	534.0	663.3	298.6
Mid-North Coast	59.3	155.3	4 020.1	630.7	423.7
Northern	540.4	1 130.1	14 833.2	1 943.8	10 002.3
North Western	336.2	584.4	14 892.8	3 187.9	1 529.0
Central West	896.9	1 477.6	7 413.4	4 085.7	1 695.3
South Eastern	772.3	896.9	9 031.2	4 333.5	2 332.8
Murrumbidgee	418.7	967.8	5 046.3	3 809.1	502.8
Murray	793.5	382.7	6 107.1	3 400.0	1 305.1
Far West	—	—	3 250.0	2.0	—
New South Wales	4 002.5	6 181.5	70 588.0	23 265.6	18 416.7

(a) Data in this table are an aggregation of responding establishments. No imputation has been made for non-responding establishments.

12

FERTILISER USAGE, Year ended 31 March 1996(a)

Statistical division	NITROGENOUS		PHOSPHATIC.....		POTASSIUM.....		COMPOUND	
	Area	Weight	Area	Weight	Area	Weight	Area	Weight
	'000 ha	'000 t	'000 ha	'000 t	'000 ha	'000 t	'000 ha	'000 t
Sydney	4.5	1.8	5.8	2.4	2.1	0.7	3.0	1.5
Hunter	41.5	10.0	77.7	11.5	5.3	4.6	17.3	4.0
Illawarra	7.5	1.5	20.7	6.7	5.2	1.0	5.1	1.6
Richmond-Tweed	22.6	8.7	13.9	3.3	7.4	1.5	8.5	5.9
Mid-North Coast	20.9	6.5	44.2	8.6	9.1	1.9	12.8	4.5
Northern	460.9	67.2	431.7	45.5	6.9	0.9	212.0	13.6
North Western	128.2	16.5	133.3	14.2	3.3	0.2	331.1	22.2
Central West	140.9	18.3	293.1	33.5	6.2	0.6	526.8	50.8
South Eastern	57.1	10.2	341.3	43.7	10.2	3.2	87.5	9.4
Murrumbidgee	228.5	46.9	269.6	33.7	3.7	0.6	494.2	57.3
Murray	152.1	25.2	284.5	38.6	19.8	1.5	249.3	54.5
Far West	5.1	2.2	4.8	0.5	1.1	—	0.1	—
New South Wales	1 269.8	215.0	1 920.8	242.2	80.3	16.8	1 947.7	225.4

(a) Data in this table are an aggregation of responding establishments. No imputation has been made for non-responding establishments.

13

SOIL CONDITIONERS, Year ended 31 March 1996(a)

Statistical division	LIME		DOLOMITE-ACIDITY(b)		DOLOMITE-PHYSICAL(c)		GYPSUM.....	
	Area	Weight	Area	Weight	Area	Weight	Area	Weight
	'000 ha	'000 t	'000 ha	'000 t	'000 ha	'000 t	'000 ha	'000 t
Sydney	1.4	1.6	0.7	0.5	0.2	0.2	0.3	0.4
Hunter	1.7	2.9	0.1	0.2	—	0.5	3.7	2.5
Illawarra	3.3	7.1	0.6	0.8	0.4	0.4	0.2	0.1
Richmond-Tweed	6.7	12.6	1.1	1.1	0.2	0.5	2.1	5.0
Mid-North Coast	9.7	12.9	1.9	1.8	0.3	0.3	0.4	0.5
Northern	4.5	4.5	0.7	0.5	0.2	0.2	12.2	12.7
North Western	6.4	8.5	0.1	0.2	—	—	4.8	7.4
Central West	33.8	52.5	0.7	0.7	0.6	0.6	11.3	7.5
South Eastern	24.5	40.6	0.4	0.7	0.1	0.2	14.8	2.6
Murrumbidgee	47.5	85.9	0.8	0.7	—	—	30.1	30.4
Murray	10.7	17.6	0.5	0.4	0.2	0.1	20.8	37.9
Far West	—	—	—	—	—	—	—	0.1
New South Wales	150.2	246.8	7.6	7.7	2.3	2.9	100.6	107.0

(a) Data in this table are an aggregation of responding establishments. No imputation has been made for non-responding establishments.

(b) Dolomite used to correct soil acidity problems.

(c) Dolomite used to correct physical problems.

14

MAINTENANCE AND MANAGEMENT OF PASTURES, Year ended 31 March 1996(a)

<i>Statistical division</i>	<i>Top dressing</i> '000 ha	<i>Weed control</i> '000 ha	<i>Pest and disease control</i> '000 ha	<i>Slashing and burning</i> '000 ha	<i>Total area</i> '000 ha
Sydney	6.8	5.3	1.5	3.5	17.2
Hunter	71.5	46.9	6.8	24.9	150.2
Illawarra	21.6	10.8	1.8	9.2	43.4
Richmond-Tweed	12.0	10.6	1.3	12.5	36.4
Mid-North Coast	37.7	22.8	3.3	38.3	102.1
Northern	278.8	234.1	39.5	25.8	578.3
North Western	81.1	110.1	22.2	10.8	224.2
Central West	194.0	238.6	42.3	13.8	488.7
South Eastern	286.5	209.3	48.2	20.5	564.6
Murrumbidgee	155.3	166.8	70.2	14.4	406.7
Murray	182.9	152.0	56.6	12.8	404.2
Far West	0.6	—	—	—	0.7
New South Wales	1 329.0	1 207.3	293.7	186.8	3 018.8

(a) Data in this table are an aggregation of responding establishments. No imputation has been made for non-responding establishments.

15

IRRIGATION AREA AND SCHEDULING METHOD, Year ended 31 March 1996(a)

METHOD USED TO DECIDE WHEN TO IRRIGATE.....

<i>Statistical division</i>	<i>Total area irrigated</i> '000 ha	<i>Evaporation figures</i> no.	<i>Tensiometers</i> no.	<i>Soil probes</i> no.	<i>Government or commercial</i> no.	<i>Calendar/rotational</i> no.	<i>Local knowledge</i> no.	<i>Other</i> no.
Sydney	6.0	6	30	6	—	26	416	44
Hunter	21.0	35	11	24	20	34	575	46
Illawarra	2.1	1	11	6	—	8	96	15
Richmond-Tweed	5.9	21	38	6	11	26	377	31
Mid-North Coast	5.8	10	29	5	5	25	437	30
Northern	109.9	32	4	78	12	57	490	44
North Western	43.7	18	12	48	9	29	245	22
Central West	37.5	28	34	28	12	51	389	21
South Eastern	8.4	17	24	4	11	18	238	34
Murrumbidgee	172.9	120	66	37	54	222	971	86
Murray	225.4	128	118	23	38	264	1 272	104
Far West	5.3	3	4	1	—	1	6	1
New South Wales	643.9	419	381	266	172	761	5 512	478

(a) Data in this table are an aggregation of responding establishments. No imputation has been made for non-responding establishments.

BARLEY

GRAIN SORGHUM

Statistical division	Area	Production	Yield	Area	Production	Yield
	'000 ha	'000 t	t/ha	'000 ha	'000 t	t/ha
Sydney	—	—	—	—	—	—
Hunter	5.7	11.9	2.1	10.2	48.2	4.7
Illawarra	—	—	—	—	—	—
Richmond-Tweed	1.0	0.7	0.7	0.1	0.1	1.1
Mid-North Coast	0.1	0.2	2.0	—	0.1	5.0
Northern	166.7	274.9	1.6	137.4	361.2	2.6
North Western	99.9	145.6	1.5	18.7	46.7	2.5
Central West	117.8	220.1	1.9	1.3	3.4	2.6
South Eastern	2.4	6.4	2.6	—	0.1	2.0
Murrumbidgee	114.5	244.6	2.1	2.1	9.3	4.5
Murray	84.5	166.9	2.0	0.9	2.5	2.7
Far West	0.5	2.4	5.1	—	—	—
New South Wales						
1996	593.2	1 073.6	1.8	170.7	471.6	2.8
1995	409.8	291.5	0.7	160.7	346.6	2.2
1994	623.0	1 357.0	2.2	99.0	228.3	2.3

MAIZE

MILLET

Statistical division	Area	Production	Yield	Area	Production	Yield
	'000 ha	'000 t	t/ha	'000 ha	'000 t	t/ha
Sydney	—	0.1	3.6	—	—	—
Hunter	0.4	2.1	5.5	—	—	0.8
Illawarra	—	0.1	6.8	—	0.1	1.3
Richmond-Tweed	0.7	4.2	6.5	—	—	1.1
Mid-North Coast	0.5	2.2	4.5	0.1	0.1	1.3
Northern	5.7	34.2	6.0	1.2	1.8	1.5
North Western	1.2	9.1	7.6	0.3	0.3	0.8
Central West	1.2	9.1	7.3	0.6	0.6	1.1
South Eastern	—	—	0.7	0.1	0.2	2.3
Murrumbidgee	10.9	107.1	9.8	0.3	0.4	1.5
Murray	2.9	21.7	7.4	0.7	1.5	2.1
Far West	—	—	—	—	—	—
New South Wales						
1996	23.6	190.0	8.1	3.4	5.0	1.5
1995	20.6	145.3	7.1	7.2	7.7	1.1
1994	14.2	100.0	7.0	3.5	5.8	1.7

Statistical division	OATS			RICE		
	Area	Production	Yield	Area	Production	Yield
	'000 ha	'000 t	t/ha	'000 ha	'000 t	t/ha
Sydney	0.1	0.1	1.4	—	—	—
Hunter	3.7	4.3	1.2	—	—	—
Illawarra	—	—	1.4	—	—	—
Richmond-Tweed	—	—	1.1	—	—	—
Mid-North Coast	—	—	1.4	—	—	—
Northern	34.9	36.3	1.0	—	—	—
North Western	106.8	106.0	1.0	—	—	—
Central West	171.8	234.1	1.4	—	—	—
South Eastern	32.4	59.2	1.8	—	—	—
Murrumbidgee	100.0	167.0	1.7	62.1	454.7	7.3
Murray	55.3	104.2	1.9	74.1	510.3	6.9
Far West	—	—	—	—	—	—
New South Wales						
1996	505.1	711.2	1.4	136.3	965.1	7.1
1995	375.5	197.3	0.5	118.8	1 015.8	8.6
1994	369.0	617.8	1.7	124.6	1 042.1	8.4

Statistical division	TRITICALE			WHEAT		
	Area	Production	Yield	Area	Production	Yield
	'000 ha	'000 t	t/ha	'000 ha	'000 t	t/ha
Sydney	—	—	—	0.2	0.5	2.9
Hunter	—	0.1	1.8	17.3	40.2	2.3
Illawarra	—	0.4	4.6	0.1	0.2	3.0
Richmond-Tweed	—	—	—	—	—	—
Mid-North Coast	—	—	2.4	0.1	0.2	1.5
Northern	1.2	2.4	2.0	548.7	968.4	1.8
North Western	1.7	1.9	1.1	693.5	1 073.2	1.5
Central West	9.8	25.4	2.6	421.5	798.2	1.9
South Eastern	13.0	41.1	3.2	46.3	163.7	3.5
Murrumbidgee	33.7	95.5	2.8	335.8	908.3	2.7
Murray	15.7	42.0	2.7	263.2	551.5	2.1
Far West	—	—	—	1.6	3.8	2.4
New South Wales						
1996	75.3	208.8	2.8	2 328.2	4 508.4	1.9
1995	48.8	54.0	1.1	1 423.8	874.6	0.6
1994	42.6	110.1	2.6	1 977.7	5 086.1	2.6

Statistical division	CHICK PEAS			FABA BEANS		
	Area '000 ha	Production '000 t	Yield t/ha	Area '000 ha	Production '000 t	Yield t/ha
Sydney	—	—	—	—	—	—
Hunter	—	—	0.1	0.1	—	0.2
Illawarra	—	—	—	—	—	—
Richmond-Tweed	—	—	—	—	—	—
Mid-North Coast	—	—	—	—	—	—
Northern	21.2	21.0	1.0	5.9	5.4	0.9
North Western	6.8	6.9	1.0	2.9	2.1	0.7
Central West	2.3	1.7	0.7	—	—	1.0
South Eastern	—	—	—	—	—	—
Murrumbidgee	0.6	0.4	0.7	0.9	1.8	2.0
Murray	0.5	0.5	1.1	0.4	0.7	1.7
Far West	—	—	—	—	—	—
New South Wales						
1996	31.4	30.6	1.0	10.2	10.1	1.0
1995	20.2	7.6	0.4	7.6	6.6	0.9
1994	26.4	28.6	1.1	10.4	21.8	2.1

Statistical division	FIELD PEAS			LUPINS		
	Area '000 ha	Production '000 t	Yield t/ha	Area '000 ha	Production '000 t	Yield t/ha
Sydney	—	—	—	—	—	—
Hunter	—	—	—	0.1	0.1	0.6
Illawarra	—	—	—	0.1	0.1	1.3
Richmond-Tweed	—	—	—	—	—	—
Mid-North Coast	—	—	—	—	—	—
Northern	1.1	0.6	0.6	0.2	0.1	0.4
North Western	1.4	0.7	0.5	4.1	3.0	0.7
Central West	3.3	3.6	1.1	16.4	16.1	1.0
South Eastern	—	—	2.4	6.6	13.8	2.1
Murrumbidgee	8.5	11.0	1.3	42.3	50.9	1.2
Murray	5.8	6.1	1.0	21.8	32.4	1.5
Far West	—	—	—	—	—	—
New South Wales						
1996	20.1	21.9	1.1	91.7	116.5	1.3
1995	27.3	5.3	0.2	107.0	14.3	0.1
1994	27.1	36.4	1.3	96.2	156.0	1.6

LUCERNE

OATS

Statistical division	Area	Production	Yield	Area	Production	Yield
	'000 ha	'000 t	t/ha	'000 ha	'000 t	t/ha
Sydney	0.4	1.8	4.2	0.1	0.6	3.9
Hunter	10.1	59.4	5.9	0.5	1.6	3.2
Illawarra	0.4	1.9	4.3	0.1	0.3	5.0
Richmond-Tweed	0.2	1.0	5.6	—	0.3	6.0
Mid-North Coast	0.6	2.8	4.9	0.1	0.4	3.9
Northern	20.2	77.8	3.9	4.5	13.8	3.1
North Western	15.4	48.0	3.1	7.4	20.5	2.8
Central West	26.8	122.0	4.5	22.6	79.3	3.5
South Eastern	8.3	38.7	4.7	4.0	16.7	4.2
Murrumbidgee	16.3	64.8	4.0	20.7	83.5	4.0
Murray	12.8	49.6	3.9	16.4	68.5	4.2
Far West	—	0.3	10.9	—	—	—
New South Wales						
1996	111.6	468.2	4.2	76.4	285.4	3.7
1995	90.0	365.8	4.0	60.3	90.0	1.8
1994	96.1	487.7	5.1	61.5	226.5	3.7

WHEAT

Statistical division	Area	Production	Yield
	'000 ha	'000 t	t/ha
Sydney	—	—	—
Hunter	0.4	1.0	3.0
Illawarra	—	—	—
Richmond-Tweed	—	—	—
Mid-North Coast	—	—	—
Northern	5.2	12.8	2.4
North Western	4.7	11.7	2.5
Central West	4.3	11.8	2.7
South Eastern	0.5	1.4	2.6
Murrumbidgee	4.9	16.6	3.4
Murray	1.8	6.9	3.8
Far West	—	—	—
New South Wales			
1996	21.8	62.3	2.9
1995	35.9	63.6	1.8
1994	17.2	64.6	3.8

Statistical division	OTHER PASTURES			TOTAL PASTURES		
	Area '000 ha	Production '000 t	Yield t/ha	Area '000 ha	Production '000 t	Yield t/ha
Sydney	0.9	2.7	3.1	1.3	4.5	3.5
Hunter	5.9	17.2	2.9	16.0	76.6	4.8
Illawarra	4.0	16.8	4.2	4.4	18.7	4.2
Richmond-Tweed	1.6	6.1	3.9	1.8	7.1	4.0
Mid-North Coast	2.4	10.3	4.3	3.0	13.1	4.4
Northern	7.4	19.8	2.7	27.6	97.6	3.5
North Western	5.6	13.0	2.3	21.1	60.9	2.9
Central West	23.4	73.3	3.1	50.2	195.3	3.9
South Eastern	16.0	61.5	3.8	24.3	100.2	4.1
Murrumbidgee	31.4	102.2	3.3	47.7	167.0	3.5
Murray	44.2	149.1	3.4	57.0	198.7	3.5
Far West	—	—	1.1	0.1	0.4	5.2
New South Wales						
1996	142.8	472.1	3.3	254.4	940.2	3.7
1995	97.0	251.5	2.6	187.0	607.4	3.2
1994	139.4	450.3	3.2	235.5	938.0	4.0

CANOLA

SAFFLOWER

Statistical division	Area	Production	Yield	Area	Production	Yield
	'000 ha	'000 t	t/ha	'000 ha	'000 t	t/ha
Sydney	—	—	1.3	—	—	—
Hunter	0.2	0.3	1.4	0.2	0.1	0.5
Illawarra	0.1	0.1	1.7	—	—	—
Richmond-Tweed	—	0.1	1.8	—	—	—
Mid-North Coast	—	—	0.5	—	—	—
Northern	6.2	5.1	0.8	2.4	0.9	0.4
North Western	8.9	9.8	1.1	1.9	0.9	0.5
Central West	49.8	69.2	1.4	—	—	—
South Eastern	12.2	24.0	2.0	—	—	—
Murrumbidgee	72.6	128.7	1.8	3.4	3.1	0.9
Murray	20.0	34.9	1.7	2.3	1.3	0.6
Far West	0.1	—	—	—	—	—
New South Wales						
1996	170.2	272.3	1.6	10.3	6.3	0.6
1995	152.9	73.2	0.5	4.5	2.3	0.5
1994	100.6	192.6	1.9	14.3	10.7	0.7

SOYBEANS

SUNFLOWER

Statistical division	Area	Production	Yield	Area	Production	Yield
	'000 ha	'000 t	t/ha	'000 ha	'000 t	t/ha
Sydney	—	—	—	—	—	—
Hunter	0.1	0.1	1.0	3.2	5.8	1.8
Illawarra	—	—	—	—	—	—
Richmond-Tweed	3.7	7.0	1.9	—	—	0.8
Mid-North Coast	0.5	0.7	1.3	—	—	—
Northern	3.1	4.6	1.2	24.4	24.1	1.0
North Western	0.3	0.4	1.2	3.8	3.5	0.9
Central West	0.3	0.7	2.2	0.6	0.4	0.7
South Eastern	—	—	—	—	—	0.8
Murrumbidgee	2.0	4.6	2.3	1.4	2.5	1.8
Murray	1.7	3.6	2.1	0.6	1.6	2.6
Far West	—	—	—	0.4	0.8	1.9
New South Wales						
1996	11.6	21.5	1.8	34.4	38.7	1.1
1995	9.4	17.1	1.8	49.9	53.9	1.1
1994	22.1	47.7	2.2	38.6	47.5	1.2

Statistical division	COTTON (SEED)			SUGAR CANE (CUT FOR CRUSHING)		
	Area '000 ha	Production '000 t	Yield t/ha	Area '000 ha	Production '000 t	Yield t/ha
Sydney	—	—	—	—	—	—
Hunter	—	—	—	—	—	—
Illawarra	—	—	—	—	—	—
Richmond-Tweed	—	—	—	12.5	1 327.2	106.2
Mid-North Coast	—	—	—	5.3	595.5	111.8
Northern	158.5	475.9	3.0	—	—	—
North Western	37.4	138.2	3.7	—	—	—
Central West	0.1	0.3	3.4	—	—	—
South Eastern	—	—	—	—	—	—
Murrumbidgee	1.3	4.6	3.5	—	—	—
Murray	—	—	—	—	—	—
Far West	3.6	10.5	2.9	—	—	—
New South Wales						
1996	201.0	629.5	3.1	17.9	1 922.7	107.4
1995	156.8	550.1	3.5	16.5	1 825.4	111.0
1994	209.9	560.9	2.7	14.9	1 674.2	112.4

	1993-94	1994-95 ^r	1995-96 ^p
	\$m	\$m	\$m
Cereals for grain			
Barley	161.7	67.6	231.6
Canary seed	2.2	n.a.	n.a.
Maize	19.0	36.0	38.4
Oats	55.4	44.5	124.7
Panicum and millet	3.0	4.0	2.0
Rice	261.4	216.1	248.1
Sorghum	37.7	66.7	84.6
Triticale	14.8	12.5	43.5
Wheat	893.1	201.9	1 127.2
Other	2.1	4.0	2.6
Total	1 450.3	653.3	1 902.7
Crops for hay			
Oats	22.6	16.3	37.7
Wheat	6.3	11.5	8.0
Other	2.7	6.3	11.3
Total	31.6	34.1	57.0
Pastures and grasses for hay			
Lucerne	66.1	78.5	87.5
Other	50.9	46.4	67.4
Other crops			
Cotton (seed)	483.3	595.2	661.1
Sugarcane (cut for crushing)	43.5	50.3	52.0

	AREA SOWN (HECTARES)					
	0 to 49	50 to 99	100 to 149	150 to 199	200 to 299	300 to 399
Barley for grain						
establishments (number)	1 905	1 245	693	303	442	148
percentage of total establishments	38.1	24.9	13.9	6.1	8.8	3.0
area (hectares)	51 167	86 425	80 755	49 860	100 498	48 315
percentage of total area of barley planted	8.6	14.6	13.6	8.4	16.9	8.1
production (tonnes)	100 125	166 536	156 631	93 678	181 370	82 857
percentage of total barley production	9.3	15.5	14.6	8.7	16.9	7.7
Grain sorghum						
establishments (number)	321	234	160	87	107	53
percentage of total establishments	30.5	22.3	15.2	8.3	10.2	5.0
area (hectares)	9 087	16 587	19 098	14 474	25 386	17 458
percentage of total area of sorghum planted	5.3	9.7	11.2	8.5	14.9	10.2
production (tonnes)	26 044	48 823	58 743	43 591	77 910	49 467
percentage of total sorghum production	5.5	10.4	12.5	9.2	16.5	10.5
Oats for grain						
establishments (number)	5 362	1 983	795	248	252	53
percentage of total establishments	61.2	22.6	9.1	2.8	2.9	0.6
area (hectares)	129 514	131 360	89 592	40 429	56 577	16 916
percentage of total area of oats planted	25.6	26.0	17.7	8.0	11.2	3.3
production (tonnes)	206 130	194 801	122 861	50 678	74 361	19 619
percentage of total oats production	29.0	27.4	17.3	7.1	10.5	2.8
Rice for grain						
establishments (number)	346	668	210	91	76	13
percentage of total establishments	24.1	46.6	14.7	6.4	5.3	0.9
area (hectares)	11 717	45 897	25 626	15 101	16 900	4 255
percentage of total area of rice planted	8.6	33.7	18.8	11.1	12.4	3.1
production (tonnes)	83 517	328 799	178 149	103 229	119 323	29 038
percentage of total rice production	8.7	34.1	18.5	10.7	12.4	3.0
Wheat for grain						
establishments (number)	2 543	1 930	1 359	810	1 219	569
percentage of total establishments	25.5	19.4	13.6	8.1	12.2	5.7
area (hectares)	66 084	134 568	161 386	135 709	283 426	187 546
percentage of total area of wheat planted	2.8	5.8	6.9	5.8	12.2	8.1
production (tonnes)	153 727	318 472	384 321	319 279	614 626	391 403
percentage of total wheat production	3.4	7.1	8.5	7.1	13.6	8.7

(a) Year ended 31 March 1996.

AREA SOWN (HECTARES).....

	400 to 499	500 to 999	1,000 to 1,499	1,500 to 1,999	2,000 and over	Total
Barley for grain						
establishments (number)	116	108	23	8	8	4 999
percentage of total establishments	2.3	2.2	0.5	0.2	0.2	100.0
area (hectares)	48 885	70 245	25 951	12 839	18 232	593 172
percentage of total area of barley planted	8.2	11.8	4.4	2.2	3.1	100.0
production (tonnes)	85 962	118 966	42 070	16 419	29 033	1 073 647
percentage of total barley production	8.0	11.1	3.9	1.5	2.7	100.0
Grain sorghum						
establishments (number)	39	35	11	1	3	1 051
percentage of total establishments	3.7	3.3	1.0	0.1	0.3	100.0
area (hectares)	16 829	23 215	12 751	1 619	14 219	170 723
percentage of total area of sorghum planted	9.9	13.6	7.5	0.9	8.3	100.0
production (tonnes)	41 943	65 539	30 954	4 048	24 496	471 559
percentage of total sorghum production	8.9	13.9	6.6	0.9	5.2	100.0
Oats for grain						
establishments (number)	32	29	5	2	1	8 762
percentage of total establishments	0.4	0.3	0.1	—	—	100.0
area (hectares)	13 266	16 807	5 100	3 300	2 200	505 062
percentage of total area of oats planted	2.6	3.3	1.0	0.7	0.4	100.0
production (tonnes)	15 000	14 130	5 530	8 040	—	711 151
percentage of total oats production	2.1	2.0	0.8	1.1	—	100.0
Rice for grain						
establishments (number)	16	10	3	—	—	1 433
percentage of total establishments	1.1	0.7	0.2	—	—	100.0
area (hectares)	6 747	6 165	3 843	—	—	136 251
percentage of total area of rice planted	5.0	4.5	2.8	—	—	100.0
production (tonnes)	52 206	42 227	28 588	—	—	965 075
percentage of total rice production	5.4	4.4	3.0	—	—	100.0
Wheat for grain						
establishments (number)	465	707	179	78	109	9 968
percentage of total establishments	4.7	7.1	1.8	0.8	1.1	100.0
area (hectares)	199 690	473 814	203 833	129 885	352 209	2 328 149
percentage of total area of wheat planted	8.6	20.4	8.8	5.6	15.1	100.0
production (tonnes)	381 309	840 854	324 959	221 566	557 755	4 508 271
percentage of total wheat production	8.5	18.7	7.2	4.9	12.4	100.0

(a) Year ended 31 March 1996.

23

ESTABLISHMENTS GROWING CEREALS FOR GRAIN, Year ended 31 March 1996

	Barley	Grain sorghum	Maize	Millet	Oats	Rice	Triticale	Wheat
Statistical division	no.	no.	no.	no.	no.	no.	no.	no.
Sydney	—	—	4	—	2	—	—	2
Hunter	75	56	41	3	98	—	3	127
Illawarra	—	—	1	2	1	—	2	2
Richmond-Tweed	22	5	33	5	3	—	—	—
Mid-North Coast	2	4	53	3	2	—	1	2
Northern	1 144	811	78	30	854	—	22	1 676
North Western	844	104	13	17	1 540	—	22	1 861
Central West	1 156	22	17	25	2 589	—	200	2 350
South Eastern	51	2	2	4	776	—	232	419
Murrumbidgee	995	28	51	6	1 729	596	557	2 077
Murray	709	19	26	17	1 168	837	282	1 449
Far West	1	—	—	—	—	—	—	3
New South Wales								
1996	4 999	1 051	319	112	8 762	1 433	1 321	9 968
1995	3 929	1 103	313	181	6 697	1 402	936	7 825
1994	5 071	689	225	84	7 179	1 403	844	9 091

24

CEREAL CROP FORECAST FOR ALL PURPOSES, Year ended 31 March 1997

AREA SOWN OR INTENDED TO BE SOWN IN 1996-97

	Barley	Oats	Wheat
Statistical division	'000 ha	'000 ha	'000 ha
Sydney	—	0.6	0.3
Hunter	5.0	8.7	22.5
Illawarra	—	0.5	0.4
Richmond-Tweed	1.6	0.7	0.1
Mid-North Coast	0.3	0.6	0.3
Northern	156.3	75.2	641.0
North Western	106.8	129.7	820.6
Central West	137.2	169.1	520.9
South Eastern	2.7	26.2	78.3
Murrumbidgee	123.2	84.4	421.8
Murray	93.1	52.0	307.7
Far West	0.8	0.1	0.9
New South Wales	627.1	547.8	2 814.8

Statistical division	APPLES				LEMONS AND LIMES			
	Trees under 6 years	Trees 6 years and over	Production	Yield	Trees under 6 years	Trees 6 years and over	Production	Yield
	'000	'000	t	kg/tree	'000	'000	t	kg/tree
Sydney	29.9	50.8	1 238.3	24.4	26.0	70.4	2 334.3	33.2
Hunter	0.9	2.3	18.2	7.8	0.1	0.5	6.3	13.7
Illawarra	6.3	12.0	446.8	37.1	0.1	0.1	2.4	29.5
Richmond-Tweed	—	—	—	—	2.4	3.7	65.2	17.5
Mid-North Coast	0.1	0.1	0.1	0.6	0.5	0.7	31.6	45.2
Northern	5.6	27.4	597.8	21.9	—	—	—	—
North Western	1.7	3.4	20.3	6.0	—	9.6	121.9	12.7
Central West	223.4	629.6	28 447.6	45.9	—	—	—	—
South Eastern	3.4	15.7	145.3	9.3	—	—	0.4	—
Murrumbidgee	374.1	483.8	26 350.3	54.5	5.7	25.3	1 882.2	74.5
Murray	35.1	53.4	4 099.1	76.8	2.6	21.0	1 079.2	51.4
Far West	—	—	—	—	—	—	—	—
New South Wales								
1996	680.5	1 278.4	61 364.0	48.4	37.5	131.2	5 524.8	42.1
1995	560.2	1 266.5	79 069.0	62.4	39.8	136.0	6 228.9	45.8
1994	530.7	1 221.1	63 294.8	51.8	45.2	130.2	6 170.0	47.4

Statistical division	MANDARINS				NASHI			
	Trees under 6 years	Trees 6 years and over	Production	Yield	Trees under 6 years	Trees 6 years and over	Production	Yield
	'000	'000	t	kg/tree	'000	'000	t	kg/tree
Sydney	4.7	12.7	441.4	34.8	1.5	1.2	19.7	16.0
Hunter	1.3	5.4	163.0	30.4	—	—	—	—
Illawarra	—	—	—	—	—	0.7	1.5	2.1
Richmond-Tweed	14.0	9.4	290.0	30.7	—	—	—	—
Mid-North Coast	3.1	1.8	47.5	25.8	—	—	0.2	—
Northern	—	1.6	63.2	40.2	—	0.2	—	—
North Western	8.1	3.9	310.0	79.6	—	—	—	—
Central West	—	0.1	6.3	126.0	3.8	0.1	45.9	^(a) 629.1
South Eastern	0.1	—	1.9	93.5	0.3	20.3	213.8	10.5
Murrumbidgee	10.2	13.4	696.3	51.8	0.4	0.2	3.0	12.7
Murray	19.5	56.5	2 377.5	42.1	0.3	0.3	18.0	60.0
Far West	—	0.1	3.4	24.3	—	—	—	—
New South Wales								
1996	61.0	104.9	4 400.5	41.9	6.3	23.1	302.1	13.1
1995	62.5	95.5	4 238.5	44.4	26.8	8.8	391.1	44.4
1994	69.1	99.8	4 388.8	44.0	23.2	5.4	279.1	51.6

(a) For footnote see end of table.

ORANGES

PEARS (EXCLUDING NASHI).....

Statistical division	Trees under 6 years	Trees 6 years and over	Production	Yield	Trees under 6 years	Trees 6 years and over	Production	Yield
	'000	'000	t	kg/tree	'000	'000	t	kg/tree
Sydney	30.1	290.7	9 958.0	34.3	0.2	0.8	49.9	63.8
Hunter	1.1	8.9	248.5	27.9	0.1	0.1	1.5	30.0
Illawarra	—	1.1	12.3	11.2	—	0.7	9.2	12.5
Richmond-Tweed	0.9	1.5	16.3	10.7	—	—	—	—
Mid-North Coast	1.2	11.5	707.2	61.3	—	—	—	—
Northern	0.8	1.3	76.2	60.3	0.8	2.1	49.3	23.5
North Western	16.4	39.0	3 526.5	90.5	—	0.1	0.5	6.5
Central West	—	2.5	212.8	84.5	15.0	39.4	1 932.3	49.1
South Eastern	0.6	9.0	450.3	50.1	0.5	1.6	25.7	16.4
Murrumbidgee	326.1	1 990.6	109 880.6	55.2	2.1	9.1	313.2	34.4
Murray	155.1	826.6	52 461.3	63.5	0.4	0.7	37.2	51.7
Far West	—	1.2	150.0	125.0	—	—	—	—
New South Wales								
1996	532.4	3 183.9	177 700.1	55.8	19.1	54.5	2 418.9	44.4
1995	619.8	3 018.3	209 959.7	69.6	20.7	54.4	2 774.1	51.0
1994	670.9	3 248.4	242 542.9	74.7	15.6	63.4	3 441.1	54.3

(a) Yield is calculated for trees 6 years and over only. However, the production figure used to calculate yield includes any contribution by trees under 6 years. In most cases this contribution is relatively insignificant, but in some instances it can distort yield figures.

APRICOTS					CHERRIES			
Statistical division	Trees under 6 years	Trees 6 years and over	Production	Yield	Trees under 6 years	Trees 6 years and over	Production	Yield
	'000	'000	t	kg/tree	'000	'000	t	kg/tree
Sydney	0.7	0.5	7.7	14.3	0.5	2.3	17.7	7.8
Hunter	—	—	0.4	22.0	—	—	—	—
Illawarra	—	—	0.1	8.4	—	0.5	—	—
Richmond-Tweed	—	—	0.5	20.0	—	—	—	—
Mid-North Coast	—	—	0.2	7.5	—	—	—	—
Northern	0.6	0.5	2.0	3.6	2.3	2.7	4.9	1.8
North Western	3.0	0.5	8.3	18.0	4.2	1.1	4.3	3.9
Central West	1.9	3.2	12.2	3.8	61.2	46.2	281.4	6.1
South Eastern	6.0	1.5	18.0	12.1	145.5	272.8	1 246.0	4.1
Murrumbidgee	10.1	15.3	311.3	20.4	13.6	7.1	20.7	2.9
Murray	3.4	5.7	114.3	20.0	0.3	1.1	7.4	6.9
Far West	—	0.9	31.5	37.1	—	—	—	—
New South Wales								
1996	25.7	28.2	506.5	18.0	227.7	333.7	1 582.4	4.7
1995	29.2	28.9	793.5	27.4	232.6	269.3	2 695.7	10.0
1994	31.8	28.6	670.5	23.4	252.8	292.3	3 807.1	13.0

NECTARINES					PEACHES			
Statistical division	Trees under 6 years	Trees 6 years and over	Production	Yield	Trees under 6 years	Trees 6 years and over	Production	Yield
	'000	'000	t	kg/tree	'000	'000	t	kg/tree
Sydney	60.6	58.8	1 443.1	24.5	72.5	102.2	2 605.8	25.5
Hunter	1.6	3.4	61.8	18.2	3.6	7.4	142.7	19.2
Illawarra	0.9	4.3	46.8	10.9	5.3	16.5	263.1	15.9
Richmond-Tweed	34.4	31.6	601.9	21.0	19.6	24.5	449.1	18.4
Mid-North Coast	1.1	7.3	82.8	11.3	3.6	5.1	106.7	20.9
Northern	2.0	1.7	16.9	9.7	4.3	4.2	39.9	9.4
North Western	7.6	5.1	127.7	25.2	12.8	15.6	315.2	20.2
Central West	48.4	44.9	864.8	19.3	40.3	65.6	1 322.6	20.2
South Eastern	22.0	25.4	614.5	24.2	31.6	38.7	1 347.2	34.5
Murrumbidgee	182.3	108.8	2 317.8	21.3	164.7	113.8	5 969.8	52.5
Murray	2.6	3.6	100.3	27.6	4.5	9.4	347.5	36.8
Far West	—	—	—	—	—	—	—	—
New South Wales								
1996	363.5	294.9	6 278.4	21.3	362.8	403.1	12 909.4	32.0
1995	218.3	251.1	5 700.2	22.7	243.8	394.0	11 907.8	30.2
1994	246.6	207.7	5 115.7	24.6	281.2	464.6	12 712.1	27.4

(a) For footnote see end of table.

PLUMS AND PRUNES

Statistical division	Trees under 6 years	Trees 6 years and over	Production	Yield
	'000	'000	t	kg/tree
Sydney	9.7	28.6	741.6	26.0
Hunter	0.2	1.5	13.9	9.1
Illawarra	—	1.7	8.5	4.9
Richmond-Tweed	1.4	0.4	6.0	16.2
Mid-North Coast	0.4	0.5	7.6	16.6
Northern	1.1	2.4	24.4	10.3
North Western	4.8	2.8	69.0	24.7
Central West	48.8	41.0	708.9	17.3
South Eastern	120.9	189.4	4 300.2	22.8
Murrumbidgee	39.8	92.4	2 641.3	28.6
Murray	4.3	3.9	84.6	21.6
Far West	0.3	—	—	—
New South Wales				
1996	231.6	364.5	8 605.9	23.7
1995	213.2	371.5	8 152.3	21.9
1994	207.1	363.1	13 093.5	36.1

(a) Yield is calculated for trees 6 years and over only. However, the production figure used to calculate yield includes any contribution by trees under 6 years. In most cases this contribution is relatively insignificant, but in some instances it can distort yield figures.

ALMONDS

Statistical division	Trees under 6 years	Trees 6 years and over	Production t	Yield kg/tree
	'000	'000		
Sydney	—	—	0.1	2.4
Hunter	—	—	—	—
Illawarra	—	—	—	—
Richmond-Tweed	—	—	—	—
Mid-North Coast	—	0.1	—	—
Northern	—	—	—	2.5
North Western	0.2	—	0.1	14.7
Central West	—	—	—	—
South Eastern	0.1	0.1	—	0.2
Murrumbidgee	0.8	7.7	68.0	8.8
Murray	22.8	13.1	20.8	1.6
Far West	—	—	—	—
New South Wales				
1996	23.9	21.0	89.0	4.2
1995	16.3	7.9	84.0	10.6
1994	3.5	8.5	60.6	7.1

AVOCADOS

Statistical division	Trees under 6 years	Trees 6 years and over	Production t	Yield kg/tree
	'000	'000		
Sydney	2.8	1.1	55.9	49.0
Hunter	1.0	1.8	39.9	21.6
Illawarra	—	—	—	—
Richmond-Tweed	19.1	58.7	3 044.7	48.5
Mid-North Coast	20.3	23.7	1 032.9	47.0
Northern	—	—	—	—
North Western	—	0.4	12.0	34.4
Central West	—	—	—	—
South Eastern	—	—	—	—
Murrumbidgee	—	0.3	0.3	1.1
Murray	7.1	20.3	568.7	28.0
Far West	—	—	—	—
New South Wales				
1996	50.3	106.4	4 784.4	43.8
1995	41.7	77.4	3 015.7	39.0
1994	47.4	90.5	3 486.8	38.5

MACADAMIA NUTS

Statistical division	Trees under 6 years	Trees 6 years and over	Production t	Yield kg/tree
	'000	'000		
Sydney	11.3	1.4	17.2	12.3
Hunter	0.7	0.1	0.9	9.0
Illawarra	0.1	0.1	—	0.3
Richmond-Tweed	297.4	788.6	7 674.8	9.4
Mid-North Coast	16.9	44.0	264.9	6.5
Northern	—	—	—	—
North Western	—	—	—	—
Central West	—	—	—	—
South Eastern	—	—	—	—
Murrumbidgee	0.1	9.5	49.6	5.2
Murray	—	—	—	—
Far West	—	—	—	—
New South Wales				
1996	326.6	844.1	8 007.6	9.5
1995	444.7	622.4	6 706.4	10.8
1994	491.1	499.0	5 363.8	10.7

MANGOES

Statistical division	Trees under 6 years	Trees 6 years and over	Production t	Yield kg/tree
	'000	'000		
Sydney	—	—	—	—
Hunter	0.1	—	0.2	16.0
Illawarra	—	—	—	—
Richmond-Tweed	17.3	18.0	152.6	8.5
Mid-North Coast	3.3	1.2	11.3	9.6
Northern	—	—	—	—
North Western	—	—	—	—
Central West	0.1	—	0.2	—
South Eastern	—	—	—	—
Murrumbidgee	—	—	—	—
Murray	0.1	—	0.2	15.3
Far West	—	—	—	—
New South Wales				
1996	20.9	19.2	164.5	8.6
1995	20.7	15.5	340.4	22.0
1994	30.9	14.7	116.9	8.0

(a) Yield is calculated for trees 6 years and over only. However, the production figure used to calculate yield includes any contribution by trees under 6 years. In most cases this contribution is relatively insignificant, but in some instances it can distort yield figures.

BANANAS

KIWIFRUIT

Statistical division	Area not yet bearing	Area of bearing age	Production	Yield	Area not yet bearing	Area of bearing age	Production	Yield
	ha	ha	t	t/ha	ha	ha	t	t/ha
Sydney	—	—	—	—	—	35.8	418.4	11.7
Hunter	—	3.2	30.0	9.4	—	2.0	1.0	0.5
Illawarra	—	—	—	—	—	2.5	16.0	6.4
Richmond-Tweed	251.8	1 326.7	15 613.9	11.8	—	2.0	4.5	2.3
Mid-North Coast	266.2	1 777.6	23 063.9	13.0	1.0	50.7	257.8	5.1
Northern	—	—	—	—	—	5.6	19.5	3.5
North Western	—	—	—	—	—	—	—	—
Central West	—	—	—	—	—	0.2	—	—
South Eastern	—	—	—	—	—	5.0	—	—
Murrumbidgee	—	—	—	—	—	—	—	—
Murray	—	—	—	—	—	—	—	—
Far West	—	—	—	—	—	—	—	—
New South Wales								
1996	518.0	3 107.5	38 707.8	12.5	1.0	103.8	717.1	6.9
1995	365.0	2 860.0	41 906.2	14.7	6.0	98.0	786.9	8.0
1994	867.0	2 992.0	44 704.0	14.9	14.0	88.0	849.5	9.7

PAPAWS

PINEAPPLES

Statistical division	Area not yet bearing	Area of bearing age	Production	Yield	Area not yet bearing	Area of bearing age	Production	Yield
	ha	ha	t	t/ha	ha	ha	t	t/ha
Sydney	—	—	—	—	—	—	—	—
Hunter	—	—	—	—	—	—	—	—
Illawarra	—	—	—	—	—	—	—	—
Richmond-Tweed	2.8	12.3	60.4	3.3	0.2	3.3	29.0	8.8
Mid-North Coast	—	0.6	0.3	0.5	—	—	—	—
Northern	—	—	—	—	—	—	—	—
North Western	—	—	—	—	—	—	—	—
Central West	—	—	—	—	—	—	—	—
South Eastern	—	—	—	—	—	—	—	—
Murrumbidgee	—	—	—	—	—	—	—	—
Murray	—	—	—	—	—	—	—	—
Far West	—	—	—	—	—	—	—	—
New South Wales								
1996	2.8	12.9	60.7	3.2	0.2	3.3	29.0	8.8
1995	5.0	9.0	70.3	7.8	—	0.1	0.5	5.0
1994	9.0	5.0	19.5	3.9	—	1.2	2.8	2.3

Statistical division	RASPBERRIES.....				STRAWBERRIES.....			
	Area not yet bearing ha	Area of bearing age ha	Production t	Yield t/ha	Area not yet bearing ha	Area of bearing age ha	Production t	Yield t/ha
Sydney	—	0.1	0.2	2.0	7.8	15.5	105.0	6.8
Hunter	0.6	1.5	2.4	1.6	2.5	1.8	12.0	6.7
Illawarra	—	7.0	1.0	0.1	1.0	5.3	16.3	3.1
Richmond-Tweed	—	0.6	2.0	3.3	2.0	5.4	22.0	4.1
Mid-North Coast	—	1.0	5.2	5.2	—	0.3	5.3	17.7
Northern	0.3	5.0	6.7	1.3	—	3.1	31.0	10.0
North Western	—	1.3	1.9	1.5	—	1.5	3.4	2.3
Central West	0.1	1.0	1.0	1.0	—	1.5	11.0	7.3
South Eastern	0.5	9.2	11.1	1.2	0.1	1.0	1.5	1.5
Murrumbidgee	0.1	0.4	1.5	3.8	—	2.0	2.0	1.0
Murray	—	1.0	0.6	0.6	—	2.3	7.8	3.4
Far West	—	—	—	—	—	—	—	—
New South Wales								
1996	1.6	28.1	33.6	1.2	13.4	39.7	217.4	5.5
1995	2.0	25.2	22.8	0.9	10.0	32.0	191.1	6.0
1994	7.8	27.7	24.3	0.9	40.0	34.0	237.6	7.0

	1993-94	1994-95r	1995-96p
	\$m	\$m	\$m
Apples	38.8	54.6	59.2
Apricots	1.9	2.1	1.4
Avocados	5.7	7.9	7.8
Bananas	47.3	52.3	52.6
Cherries	15.7	13.5	7.7
Grapefruit	2.3	n.a.	n.a.
Grapes	90.5	89.1	112.6
Lemons and limes	7.6	4.7	6.4
Mandarins	5.4	7.1	6.0
Mangoes	0.5	1.2	0.8
Nectarines	12.8	13.6	20.8
Oranges	79.0	80.1	67.6
Passionfruit	1.6	n.a.	n.a.
Peaches	16.5	17.0	19.8
Pears	1.7	1.0	1.1
Plums and prunes	20.3	12.7	17.2
Strawberries	1.4	1.6	1.8
Other, including nuts	21.5	39.9	48.3
Total	369.9	398.4	431.1

AREA OF VINES AT HARVEST

Not yet bearing (planted or grafted)

GRAPE PRODUCTION

Statistical division	Planted or	During	Bearing	Winemaking	Drying	Table	Total
	grafted prior to	collection				& other	
	collection year	year	ha	t	t	t	t
	ha	ha	ha	t	t	t	t
Sydney	7.6	—	30.0	74.3	—	136.0	210.3
Hunter	197.7	156.4	2 844.7	18 665.6	—	47.0	18 712.6
Illawarra	3.0	—	18.3	63.7	—	—	63.7
Richmond-Tweed	2.1	0.9	0.4	—	—	—	—
Mid-North Coast	0.6	2.3	119.5	574.1	—	—	574.1
Northern	0.6	7.8	39.8	287.8	—	3.1	290.9
North Western	164.1	37.6	493.6	4 153.0	—	733.7	4 886.7
Central West	211.3	165.0	769.4	10 775.6	—	55.3	10 830.9
South Eastern	11.3	16.8	166.8	1 301.4	—	—	1 301.4
Murrumbidgee	837.8	480.6	5 265.3	91 021.5	—	65.6	91 087.1
Murray	488.4	315.1	3 759.4	39 578.6	46 687.0	7 842.9	94 108.5
Far West	8.0	—	260.4	1 060.0	—	1 957.5	3 017.5
New South Wales							
1996	1 932.5	1 182.5	13 767.6	167 555.6	46 687.0	10 841.1	225 083.7
1995	728.7	1 082.1	12 626.4	104 687.3	25 823.4	8 439.4	138 950.1
1994	487.4	545.9	13 288.4	141 145.1	37 671.0	8 668.7	187 484.8

	Units	1994	1995	1996
Asparagus(a)				
area	ha	424.2	361.7	438.0
production	t	2 524.5	2 300.9	2 495.7
Beans — French and runner				
area	ha	424.7	414.9	604.4
production	t	1 198.3	1 245.3	1 871.4
yield	t/ha	2.8	3.0	3.1
Beetroot				
area	ha	42.8	27.1	89.3
production	t	1 373.8	498.6	1 304.7
yield	t/ha	32.1	18.4	14.6
Broccoli				
area	ha	310.6	408.4	775.6
production	t	1 444.1	2 159.0	3 973.8
yield	t/ha	4.6	5.3	5.1
Brussels sprouts				
area	ha	12.0	10.1	12.1
production	t	168.5	142.2	148.9
yield	t/ha	14.0	14.1	12.3
Cabbages				
area	ha	484.4	431.1	432.6
production	t	14 675.0	12 534.6	10 042.3
yield	t/ha	30.3	29.1	23.2
Capsicum, chillies and peppers				
area	ha	98.5	87.9	79.8
production	t	1 055.2	927.7	666.2
yield	t/ha	10.7	10.6	8.3
Carrots				
area	ha	666.6	1 448.2	1 306.8
production	t	16 457.9	26 137.4	22 756.7
yield	t/ha	24.7	18.0	17.4
Cauliflower				
area	ha	539.3	535.2	565.1
production	t	12 851.7	10 524.2	10 743.0
yield	t/ha	23.8	19.7	19.0
Celery				
area	ha	7.2	12.1	17.7
production	t	285.5	381.7	470.6
yield	t/ha	39.7	31.5	26.6
Chinese cabbages				
area	ha	5.5	15.5	25.6
production	t	64.0	480.3	646.9
yield	t/ha	11.6	31.0	25.3
Cucumber				
area	ha	98.0	385.6	481.9
production	t	777.8	3 961.5	5 855.7
yield	t/ha	7.9	10.3	12.2
Green peas (pod weight)				
area	ha	715.0	623.0	1 020.4
production	t	3 194.0	5 223.0	8 828.6
yield	t/ha	4.5	3.2	8.7
Leeks				
area	ha	3.2	6.5	20.2
production	t	19.8	35.3	120.3
yield	t/ha	6.2	5.4	6.0
Lettuces				
area	ha	481.7	443.5	518.7
production	t	7 590.7	7 641.9	7 194.1
yield	t/ha	15.8	17.2	13.9
Marrows and squashes				
area	ha	145.8	35.8	14.8
production	t	356.0	151.5	78.6
yield	t/ha	2.4	4.2	5.3

(a) Asparagus is a perennial crop and, as such, yield cannot be calculated meaningfully.

	Units	1994	1995	1996
Melons — rock and cantaloupe				
area	ha	872.0	538.9	582.1
production	t	18 932.7	11 640.9	10 126.4
yield	t/ha	21.7	21.6	17.4
Melons — water				
area	ha	509.5	329.3	345.0
production	t	13 935.1	5 147.9	4 929.3
yield	t/ha	27.4	15.6	14.3
Melons — other				
area	ha	7.0	18.0	4.0
production	t	84.6	127.2	39.0
yield	t/ha	12.1	7.1	9.8
Mushrooms				
area	ha	59.8	57.9	58.8
production	t	10 740.1	12 508.3	12 371.9
yield	t/ha	179.6	216.0	210.4
Onions — white and brown				
area	ha	1 067.6	750.7	749.4
production	t	24 806.0	12 010.0	14 059.7
yield	t/ha	23.2	16.0	18.8
Parsley				
area	ha	33.1	29.4	34.3
production	t	1 034.0	1 068.2	1 054.1
yield	t/ha	31.2	36.3	30.7
Parsnips				
area	ha	63.1	50.6	38.6
production	t	1 284.2	1 065.6	1 071.2
yield	t/ha	20.4	21.1	27.8
Potatoes				
area	ha	6 552.1	6 274.0	7 167.8
production	t	138 675.5	126 812.0	162 456.2
yield	t/ha	21.2	20.2	22.7
Pumpkins				
area	ha	1 558.0	1 228.4	1 642.7
production	t	22 750.9	18 152.9	22 236.4
yield	t/ha	14.6	14.8	13.5
Snow peas				
area	ha	33.0	36.5	65.6
production	t	68.9	56.3	52.9
yield	t/ha	2.1	1.5	0.8
Spring onions				
area	ha	32.8	32.1	35.5
production	t	995.7	840.7	762.2
yield	t/ha	30.4	26.2	21.5
Swedes				
area	ha	93.9	80.9	40.3
production	t	839.5	968.8	632.7
yield	t/ha	8.9	12.0	15.7
Sweet corn				
area	ha	3 191.0	3 137.2	3 634.1
production	t	46 470.9	44 134.3	49 064.1
yield	t/ha	14.6	14.1	13.5
Tomatoes				
area	ha	2 119.9	2 053.4	1 818.6
production	t	89 570.3	85 323.2	82 515.2
yield	t/ha	42.3	41.6	45.4
Zucchini				
area	ha	224.0	196.9	228.5
production	t	1 596.6	1 509.9	1 746.0
yield	t/ha	7.1	7.7	7.6

	Units	Sydney	Hunter	Illawarra	Richmond-Tweed	Mid-North Coast	Northern
Asparagus(a)							
area	ha	6.0	—	0.3	—	—	—
production	t	5.0	—	0.3	—	—	—
Beans — French and runner							
area	ha	19.3	5.6	20.0	34.7	233.4	2.5
production	t	29.9	10.8	36.5	142.6	628.8	4.5
yield	t/ha	1.5	1.9	1.8	4.1	2.7	1.8
Beetroot							
area	ha	4.5	—	—	—	0.3	—
production	t	35.5	—	—	—	1.2	—
yield	t/ha	7.9	—	—	—	4.0	—
Broccoli							
area	ha	99.6	8.9	—	1.3	20.5	42.1
production	t	504.5	35.6	—	5.3	48.1	223.3
yield	t/ha	5.1	4.0	—	4.1	2.3	5.3
Brussels sprouts							
area	ha	—	0.1	—	—	—	—
production	t	—	1.4	—	—	—	—
yield	t/ha	—	14.0	—	—	—	—
Cabbages							
area	ha	221.7	37.4	0.5	2.9	15.9	21.1
production	t	4 642.2	472.9	8.0	26.4	167.2	10.3
yield	t/ha	20.9	12.6	16.0	9.1	10.5	0.5
Capsicum, chillies and peppers							
area	ha	41.4	1.2	—	3.6	5.6	2.4
production	t	366.4	8.6	—	14.7	9.7	10.3
yield	t/ha	8.9	7.2	—	4.1	1.7	4.3
Carrots							
area	ha	72.8	59.8	7.0	—	—	1.0
production	t	1 295.5	1 137.2	210.0	—	—	22.5
yield	t/ha	17.8	19.0	30.0	—	—	22.5
Cauliflower							
area	ha	195.2	51.0	0.5	1.5	8.2	45.1
production	t	3 213.8	639.4	2.0	7.5	149.5	694.6
yield	t/ha	16.5	12.5	4.0	5.0	18.2	15.4
Celery							
area	ha	8.7	—	—	—	3.0	6.0
production	t	237.0	—	—	—	89.6	144.0
yield	t/ha	27.2	—	—	—	29.9	24.0
Chinese cabbages							
area	ha	23.6	—	—	—	2.0	—
production	t	566.9	—	—	—	80.0	—
yield	t/ha	24.0	—	—	—	40.0	—
Cucumber							
area	ha	39.8	8.9	—	1.7	12.2	2.7
production	t	500.5	36.0	—	10.8	198.8	21.0
yield	t/ha	12.6	4.0	—	6.4	16.3	7.8
Green peas (pod weight)							
area	ha	9.8	2.0	—	36.3	26.0	2.0
production	t	22.6	4.0	—	108.0	35.2	2.0
yield	t/ha	2.3	2.0	—	3.0	1.4	1.0
Leeks							
area	ha	13.5	—	—	—	—	5.5
production	t	82.1	—	—	—	—	32.0
yield	t/ha	6.1	—	—	—	—	5.8
Lettuces							
area	ha	207.6	19.1	0.5	8.5	11.8	3.2
production	t	3 884.2	143.3	7.0	483.8	190.4	45.0
yield	t/ha	18.7	7.5	14.0	56.9	16.1	14.1
Marrows and squashes							
area	ha	2.1	0.8	—	0.5	5.8	3.1
production	t	8.3	2.9	—	2.1	26.9	23.2
yield	t/ha	4.0	3.6	—	4.2	4.6	7.5

(a) Asparagus is a perennial crop and, as such, yield cannot be calculated meaningfully.

	Units	North Western	Central West	South Eastern	Murrumbidgee	Murray	Far West
Asparagus(a)							
area	ha	8.4	225.0	137.1	36.5	24.7	—
production	t	8.3	768.0	1 471.1	184.5	58.5	—
Beans — French and runner							
area	ha	94.3	93.1	24.6	0.1	76.8	—
production	t	338.0	445.6	66.9	0.1	167.8	—
yield	t/ha	3.6	4.8	2.7	1.0	2.2	—
Beetroot							
area	ha	0.5	78.0	—	6.0	—	—
production	t	1.0	1 247.0	—	20.0	—	—
yield	t/ha	2.0	16.0	—	3.3	—	—
Broccoli							
area	ha	14.1	97.0	409.8	63.0	19.3	—
production	t	72.0	604.6	2 054.3	340.0	86.1	—
yield	t/ha	5.1	6.2	5.0	5.4	4.5	—
Brussels sprouts							
area	ha	—	12.0	—	—	—	—
production	t	—	147.5	—	—	—	—
yield	t/ha	—	12.3	—	—	—	—
Cabbages							
area	ha	9.1	101.5	12.0	5.2	5.3	—
production	t	90.4	3 883.0	570.0	53.9	118.0	—
yield	t/ha	9.9	38.3	47.5	10.4	22.3	—
Capsicum, chillies and peppers							
area	ha	1.9	—	0.3	1.5	21.9	—
production	t	2.5	—	2.6	6.4	244.9	—
yield	t/ha	1.3	—	8.7	4.3	11.2	—
Carrots							
area	ha	0.5	3.0	100.0	916.9	145.8	—
production	t	6.0	70.0	1 500.0	14 351.0	4 164.5	—
yield	t/ha	12.0	23.3	15.0	15.7	28.6	—
Cauliflower							
area	ha	10.5	238.2	4.0	10.0	0.9	—
production	t	73.5	5 685.2	150.0	120.0	7.5	—
yield	t/ha	7.0	23.9	37.5	12.0	8.3	—
Celery							
area	ha	—	—	—	—	—	—
production	t	—	—	—	—	—	—
yield	t/ha	—	—	—	—	—	—
Chinese cabbages							
area	ha	—	—	—	—	—	—
production	t	—	—	—	—	—	—
yield	t/ha	—	—	—	—	—	—
Cucumber							
area	ha	2.2	1.2	0.3	407.0	5.9	—
production	t	9.2	9.3	0.8	5 015.0	54.4	—
yield	t/ha	4.2	7.8	2.7	12.3	9.2	—
Green peas (pod weight)							
area	ha	172.0	471.3	1.0	300.0	—	—
production	t	1 350.8	3 800.9	3.3	3 501.7	—	—
yield	t/ha	7.9	8.1	3.3	11.7	—	—
Leeks							
area	ha	—	—	1.2	—	—	—
production	t	—	—	6.2	—	—	—
yield	t/ha	—	—	5.2	—	—	—
Lettuces							
area	ha	40.0	19.9	25.2	173.0	4.9	5.0
production	t	440.1	273.6	117.4	1 448.3	111.0	50.0
yield	t/ha	11.0	13.7	4.7	8.4	22.7	10.0
Marrows and squashes							
area	ha	0.1	0.6	—	—	1.8	—
production	t	0.1	2.5	—	—	12.5	—
yield	t/ha	1.0	4.2	—	—	6.9	—

(a) Asparagus is a perennial crop and, as such, yield cannot be calculated meaningfully.

	Units	Sydney	Hunter	Illawarra	Richmond-Tweed	Mid-North Coast	Northern
Melons — rock and cantaloupe							
area	ha	4.2	3.1	—	4.8	0.2	—
production	t	39.0	40.2	—	14.5	—	—
yield	t/ha	9.3	13.0	—	3.0	—	—
Melons — water							
area	ha	52.2	20.3	—	9.0	26.9	44.0
production	t	556.5	301.0	—	133.0	353.5	251.0
yield	t/ha	10.7	14.8	—	14.8	13.1	5.7
Melons — other							
area	ha	—	—	—	—	—	—
production	t	—	—	—	—	—	—
yield	t/ha	—	—	—	—	—	—
Mushrooms							
area	ha	50.5	1.1	5.0	0.8	0.6	—
production	t	10 205.0	268.0	1 141.4	198.0	235.0	—
yield	t/ha	202.1	243.6	228.3	247.5	391.7	—
Onions — white and brown							
area	ha	0.5	0.1	—	—	2.0	10.1
production	t	11.0	4.0	—	—	44.0	200.4
yield	t/ha	22.0	40.0	—	—	22.0	19.8
Parsley							
area	ha	29.3	0.8	—	2.6	0.6	1.0
production	t	1 016.5	8.0	—	21.0	4.5	4.0
yield	t/ha	34.7	10.0	—	8.1	7.5	4.0
Parsnips							
area	ha	0.2	—	—	0.4	—	1.0
production	t	8.2	—	—	16.4	—	41.1
yield	t/ha	41.0	—	—	41.0	—	41.1
Potatoes							
area	ha	187.7	160.1	299.4	62.0	502.2	437.0
production	t	5 110.7	3 162.3	6 403.5	2 271.5	12 507.3	7 712.1
yield	t/ha	27.2	19.8	21.4	36.6	24.9	17.6
Pumpkins							
area	ha	86.2	98.3	1.2	20.3	32.3	182.0
production	t	714.9	725.4	10.1	44.6	131.4	1 853.0
yield	t/ha	8.3	7.4	8.4	2.2	4.1	10.2
Snow peas							
area	ha	9.1	—	—	0.8	18.5	5.2
production	t	14.3	—	—	0.7	17.0	6.2
yield	t/ha	1.6	—	—	0.9	0.9	1.2
Spring onions							
area	ha	21.2	3.7	—	1.0	0.1	0.5
production	t	694.8	2.6	—	—	0.1	1.3
yield	t/ha	32.8	0.7	—	—	1.0	2.6
Swedes							
area	ha	5.0	—	7.7	—	0.1	10.0
production	t	58.0	—	189.7	—	1.0	5.0
yield	t/ha	11.6	—	24.6	—	10.0	0.5
Sweet corn							
area	ha	68.4	4.7	7.7	4.5	14.7	129.5
production	t	556.6	7.2	80.5	25.8	148.4	874.1
yield	t/ha	8.1	1.5	10.5	5.7	10.1	6.7
Tomatoes							
area	ha	135.7	9.2	1.0	48.9	28.4	4.3
production	t	2 075.7	61.0	0.2	1 689.8	330.4	49.7
yield	t/ha	15.3	6.6	0.2	34.6	11.6	11.6
Zucchini							
area	ha	47.2	2.3	—	91.6	13.3	15.7
production	t	281.7	11.5	—	903.6	46.8	89.8
yield	t/ha	6.0	5.0	—	9.9	3.5	5.7

	Units	North Western	Central West	South Eastern	Murrumbidgee	Murray	Far West
Melons — rock and cantaloupe							
area	ha	3.2	1.4	—	433.2	131.0	1.0
production	t	29.0	2.2	—	7 058.0	2 925.5	18.0
yield	t/ha	9.1	1.6	—	16.3	22.3	18.0
Melons — water							
area	ha	15.1	27.2	—	123.8	26.5	—
production	t	283.5	577.6	—	2 029.7	443.5	—
yield	t/ha	18.8	21.2	—	16.4	16.7	—
Melons — other							
area	ha	—	—	—	3.0	1.0	—
production	t	—	—	—	24.0	15.0	—
yield	t/ha	—	—	—	8.0	15.0	—
Mushrooms							
area	ha	0.2	0.5	0.1	—	—	—
production	t	60.0	90.0	174.5	—	—	—
yield	t/ha	300.0	180.0	1 745.0	—	—	—
Onions — white and brown							
area	ha	6.0	—	—	510.2	219.5	1.0
production	t	68.0	—	—	11 756.3	1 940.0	36.0
yield	t/ha	11.3	—	—	23.0	8.8	36.0
Parsley							
area	ha	—	—	—	—	—	—
production	t	—	—	—	—	—	—
yield	t/ha	—	—	—	—	—	—
Parsnips							
area	ha	—	—	—	37.0	—	—
production	t	—	—	—	1 005.5	—	—
yield	t/ha	—	—	—	27.2	—	—
Potatoes							
area	ha	53.9	176.2	226.0	2 226.2	2 837.1	—
production	t	1 348.2	3 871.5	4 912.4	47 567.2	67 589.5	—
yield	t/ha	25.0	22.0	21.7	21.4	23.8	—
Pumpkins							
area	ha	32.0	117.4	6.8	782.3	283.9	—
production	t	242.0	833.0	65.8	11 963.0	5 653.2	—
yield	t/ha	7.6	7.1	9.7	15.3	19.9	—
Snow peas							
area	ha	2.0	27.7	0.3	—	2.0	—
production	t	4.0	8.9	0.3	—	1.5	—
yield	t/ha	2.0	0.3	1.0	—	0.8	—
Spring onions							
area	ha	1.0	—	—	—	8.0	—
production	t	5.9	—	—	—	57.5	—
yield	t/ha	5.9	—	—	—	7.2	—
Swedes							
area	ha	—	6.0	—	11.5	—	—
production	t	—	81.0	—	298.0	—	—
yield	t/ha	—	13.5	—	25.9	—	—
Sweet corn							
area	ha	365.3	1 600.7	1.0	1 361.0	76.6	—
production	t	3 280.5	21 040.0	20.0	22 289.0	742.0	—
yield	t/ha	9.0	13.1	20.0	16.4	9.7	—
Tomatoes							
area	ha	15.0	222.0	1.4	559.4	793.3	—
production	t	784.0	1 650.6	14.8	37 321.5	38 537.5	—
yield	t/ha	52.3	7.4	10.6	66.7	48.6	—
Zucchini							
area	ha	0.8	4.9	17.3	—	35.4	—
production	t	10.5	19.1	204.3	—	178.6	—
yield	t/ha	13.1	3.9	11.8	—	5.0	—

	1993-94	1994-95r	1995-96p
	\$m	\$m	\$m
Asparagus	14.7	16.5	18.3
Beans — French and runner	1.7	2.6	3.2
Beetroot	0.2	0.3	0.3
Broccoli	2.2	4.6	7.1
Cabbages and brussels sprouts	2.8	3.9	4.4
Capsicum, chillies and peppers	1.0	1.1	0.7
Carrots	3.2	7.2	6.4
Cauliflower	4.2	4.9	6.0
Celery	0.1	0.3	0.4
Cucumbers	0.4	3.1	4.5
Green peas (pod weight)	1.5	1.6	2.0
Leeks	—	0.1	0.3
Lettuces	4.9	8.6	8.5
Marrows and squashes	0.3	0.3	0.2
Melons — water	3.9	2.6	2.7
Melons — rock and cantaloupe	11.0	8.3	7.0
Mushrooms	33.3	42.6	40.7
Onions — white and brown	11.6	5.1	7.8
Parsley	3.7	3.1	4.5
Parsnips	1.1	1.1	1.0
Potatoes	36.6	41.0	42.7
Pumpkins	6.2	5.6	5.4
Swedes	0.3	0.4	0.3
Sweet corn	8.7	8.7	9.7
Sweet potatoes	1.0	3.6	2.5
Tomatoes	19.9	14.4	19.2
Zucchini	1.7	1.7	2.3
Other vegetables	4.5	4.9	5.0
Total	181.9	198.2	213.1

34

AREA OF NURSERIES, CUT FLOWERS AND CULTIVATED TURF, Year ended 31 March 1996

Statistical division	Nurseries	Cut flowers	Cultivated turf	Total
	ha	ha	ha	ha
Sydney	451.0	309.7	n.p.	n.p.
Hunter	86.3	22.1	n.p.	n.p.
Illawarra	84.5	23.2	n.p.	n.p.
Richmond-Tweed	199.6	28.7	n.p.	n.p.
Mid-North Coast	95.8	13.3	n.p.	n.p.
Northern	40.8	4.5	n.p.	n.p.
North Western	78.7	1.0	n.p.	n.p.
Central West	39.7	6.3	n.p.	n.p.
South Eastern	46.6	18.6	n.p.	n.p.
Murrumbidgee	82.2	9.5	n.p.	n.p.
Murray	45.1	34.8	n.p.	n.p.
Far West	—	—	n.p.	n.p.
New South Wales				
1996	1 250.3	471.7	1 620.7	3 342.7
1995	1 082.7	664.1	1 717.3	3 464.1

35

AREA OF SHADE AND GLASSHOUSES, Year ended 31 March 1996

Statistical division	NURSERY.....		FLOWERS.....		TOTAL.....	
	Shadehouse	Glasshouse	Shadehouse	Glasshouse	Shadehouse	Glasshouse
	square metres	square metres	square metres	square metres	square metres	square metres
Sydney	321 174	398 365	182 189	407 668	503 363	806 033
Hunter	16 573	34 913	5 199	114 011	21 772	148 924
Illawarra	18 041	11 205	436	9 220	18 477	20 425
Richmond-Tweed	115 678	31 106	1 556	12 572	117 234	43 678
Mid-North Coast	81 028	76 438	3 200	12 770	84 228	89 208
Northern	7 719	2 237	—	3 210	7 719	5 447
North Western	470	6 075	—	2 925	470	9 000
Central West	9 691	4 217	250	1 000	9 941	5 217
South Eastern	17 748	15 018	300	2 000	18 048	17 018
Murrumbidgee	5 960	11 519	—	—	5 960	11 519
Murray	34 508	23 888	30	4 056	34 538	27 944
Far West	—	—	—	—	—	—
New South Wales	628 590	614 981	193 160	569 432	821 750	1 184 413

<i>Statistical division</i>	<i>Value of plant material purchased</i>	<i>Sales of greenstock(a)</i>	<i>Gross receipts from sales(b)</i>
	\$'000	\$'000	\$'000
Sydney	10 346.0	55 685.0	16 678.7
Hunter	910.0	2 758.5	4 768.8
Illawarra	715.5	4 106.7	384.1
Richmond-Tweed	1 715.2	10 295.0	1 802.1
Mid-North Coast	1 315.5	7 016.0	523.3
Northern	164.8	953.7	79.0
North Western	87.1	1 667.3	100.0
Central West	332.9	1 428.7	160.3
South Eastern	177.2	2 140.4	287.3
Murrumbidgee	512.1	2 681.4	34.0
Murray	307.8	4 235.1	187.9
Far West	—	—	—
New South Wales	16 584.0	92 968.0	25 005.4

(a) Sales of greenstock from nursery activity (excludes cut flowers and cultivated turf).

(b) Gross receipts from sales of cut flowers only.

37

MEAT CATTLE NUMBERS, At 31 March 1996

Statistical division	Bulls and bull calves intended for service	Cows and heifers one year and over	Heifers and other calves under one year	Other cattle one year and over	Total meat cattle	Percentage of total meat cattle herd
	'000	'000	'000	'000	'000	%
Sydney	1.0	19.4	10.3	6.9	37.6	0.6
Hunter	11.0	261.6	147.8	120.7	541.1	9.0
Illawarra	1.4	31.6	19.7	12.0	64.7	1.1
Richmond-Tweed	6.5	169.1	75.4	31.6	282.6	4.7
Mid-North Coast	7.5	181.9	95.2	71.3	355.9	5.9
Northern	33.7	791.5	467.4	370.2	1 662.8	27.6
North Western	15.3	386.2	225.0	160.7	787.3	13.1
Central West	11.8	288.9	168.8	126.4	595.9	9.9
South Eastern	12.1	264.8	159.0	66.9	502.9	8.4
Murrumbidgee	9.8	265.8	142.8	180.7	579.1	9.6
Murray	10.5	257.8	147.0	112.2	527.5	8.8
Far West	1.3	44.1	21.5	14.7	81.6	1.4
New South Wales						
1996	122.0	2 962.8	1 679.9	1 254.5	6 019.1	100.0
1995	127.2	2 909.7	1 727.6	1 102.3	5 866.8	100.0
1994	135.2	3 242.7	1 688.8	1 060.5	6 127.1	100.0

38

ESTABLISHMENTS WITH MEAT CATTLE, At 31 March 1996

Statistical division	Bulls and bull calves intended for service	Cows and heifers one year and over	Heifers and other calves under one year	Other cattle one year and over	Total establishments with meat cattle	Percentage of total establishments with meat cattle
	no.	no.	no.	no.	no.	%
Sydney	329	411	379	237	491	1.7
Hunter	1 898	2 115	1 995	1 591	2 395	8.5
Illawarra	481	558	526	325	657	2.3
Richmond-Tweed	1 827	1 941	1 804	797	2 128	7.5
Mid-North Coast	1 804	1 976	1 865	1 365	2 274	8.0
Northern	4 443	4 993	4 622	3 896	5 448	19.2
North Western	2 581	2 948	2 697	2 219	3 189	11.3
Central West	2 655	3 201	2 898	2 384	3 585	12.7
South Eastern	2 311	2 817	2 515	1 918	3 084	10.9
Murrumbidgee	1 848	2 206	1 955	1 584	2 440	8.6
Murray	1 772	2 121	1 882	1 640	2 424	8.6
Far West	184	201	188	145	208	0.7
New South Wales						
1996	22 133	25 488	23 326	18 101	28 323	100.0
1995	22 765	25 094	23 898	16 574	28 115	100.0
1994	22 638	25 390	23 020	14 218	28 073	100.0

Herd size	1995		1996	
	Establishments	Percentage of establishments with meat cattle	Establishments	Percentage of establishments with meat cattle
	no.	%	no.	%
1-29	4 582	16.3	3 982	14.1
30-49	3 050	10.8	3 142	11.1
50-69	2 799	10.0	3 068	10.8
70-99	3 291	11.7	3 349	11.8
100-149	3 693	13.1	3 830	13.5
150-199	2 556	9.1	2 522	8.9
200-299	3 022	10.7	3 115	11.0
300-399	1 638	5.8	1 740	6.1
400-499	985	3.5	1 021	3.6
500-699	1 060	3.8	1 101	3.9
700-999	731	2.6	728	2.6
1,000-1,499	398	1.4	410	1.4
1,500-1,999	151	0.5	150	0.5
2,000-4,999	130	0.5	137	0.5
5,000-9,999	21	0.1	18	0.1
10,000 and over	8	—	10	—
Total	28 115	100.0	28 323	100.0

Herd size	1995		1996	
	Number of meat cattle	Percentage of total meat cattle	Number of meat cattle	Percentage of total meat cattle
	'000	%	'000	%
1-29	67.2	1.1	61.0	1.0
30-49	119.7	2.0	122.6	2.0
50-69	164.2	2.8	180.2	3.0
70-99	274.3	4.7	278.5	4.6
100-149	449.2	7.7	467.1	7.8
150-199	440.6	7.5	434.5	7.2
200-299	734.7	12.5	756.3	12.6
300-399	562.8	9.6	597.4	9.9
400-499	438.6	7.5	453.2	7.5
500-699	622.8	10.6	645.1	10.7
700-999	602.0	10.3	601.5	10.0
1,000-1,499	473.3	8.1	488.4	8.1
1,500-1,999	255.6	4.4	257.4	4.3
2,000-4,999	362.8	6.2	379.5	6.3
5,000-9,999	150.0	2.6	131.9	2.2
10,000 and over	149.0	2.5	164.6	2.7
Total	5 866.8	100.0	6 019.1	100.0

40

MILK CATTLE NUMBERS, At 31 March 1996(a)

Statistical division	Cows in	Other	Total milk cattle(a)	Percentage of total
	milk and dry	milk cattle		milk cattle herd
	'000	'000	'000	%
Sydney	13.0	7.9	21.0	5.7
Hunter	42.7	22.9	65.6	17.7
Illawarra	26.7	17.9	44.6	12.0
Richmond-Tweed	27.4	13.4	40.8	11.0
Mid-North Coast	43.7	22.3	66.1	17.8
Northern	5.8	3.9	9.7	2.6
North Western	5.2	2.2	7.3	2.0
Central West	7.0	4.8	11.8	3.2
South Eastern	27.8	16.8	44.7	12.0
Murrumbidgee	4.1	2.9	7.0	1.9
Murray	31.8	20.9	52.7	14.2
Far West	—	—	—	—
New South Wales				
1996	235.3	135.9	371.2	100.0
1995	230.5	139.1	369.6	100.0
1994	231.6	132.3	363.9	100.0

(a) Excludes house cows.

41

ESTABLISHMENTS WITH MILK CATTLE, At 31 March 1996(a)

Statistical division	Cows in	Other	Total establishments	Percentage of establishments
	milk and dry	milk cattle	with milk cattle	with milk cattle
	no.	no.	no.	%
Sydney	73	66	82	3.3
Hunter	437	415	471	18.8
Illawarra	222	211	236	9.4
Richmond-Tweed	268	252	291	11.6
Mid-North Coast	493	468	524	20.9
Northern	113	90	152	6.1
North Western	56	39	69	2.7
Central West	76	74	111	4.4
South Eastern	204	188	235	9.4
Murrumbidgee	65	46	75	3.0
Murray	204	235	263	10.5
Far West	1	—	1	—
New South Wales				
1996	2 212	2 084	2 510	100.0
1995	2 169	2 165	2 462	100.0
1994	2 014	2 257	2 393	100.0

(a) Excludes establishments with house cows.

Herd size	1995		1996	
	Establishments no.	Percentage of establishments with milk cattle %	Establishments no.	Percentage of establishments with milk cattle %
1-49	559	22.7	645	25.7
50-99	436	17.7	407	16.2
100-149	476	19.3	470	18.7
150-199	347	14.1	340	13.5
200-249	296	9.6	223	8.9
250-299	139	5.6	140	5.6
300-349	109	4.4	99	3.9
350-399	59	2.4	70	2.8
400-499	45	1.8	56	2.2
500 and over	56	2.3	60	2.4
Total	2 462	100.0	2 510	100.0

Herd size	1995		1996	
	Number of milk cattle '000	Percentage of total milk cattle %	Number of milk cattle '000	Percentage of total milk cattle %
1-49	12.2	3.3	9.9	2.7
50-99	32.3	8.7	30.5	8.2
100-149	58.1	15.7	57.6	15.5
150-199	59.2	16.0	57.9	15.6
200-249	52.0	14.1	48.8	13.1
250-299	37.6	10.2	37.8	10.2
300-349	34.7	9.4	31.6	8.5
350-399	21.6	5.8	25.6	6.9
400-499	19.6	5.3	24.6	6.6
500 and over	42.2	11.4	46.8	12.6
Total	369.6	100.0	371.2	100.0

(a) Excludes establishments with house cows.

43

NUMBER OF SHEEP AND LAMBS, At 31 March 1996

Statistical division	Breeding ewes (1 year and over)	Lambs and hoggets (under 1 year)	All other sheep	Total sheep and lambs	Percentage of total sheep flock
	'000	'000	'000	'000	%
Sydney	6.3	3.5	10.2	20.1	—
Hunter	178.5	100.0	199.4	478.0	1.2
Illawarra	11.3	2.2	4.8	18.3	—
Richmond-Tweed	0.6	0.2	4.8	5.6	—
Mid-North Coast	2.2	0.9	1.8	4.8	—
Northern	2 776.2	1 561.1	2 143.0	6 480.3	15.8
North Western	4 047.2	2 223.0	1 616.2	7 886.4	19.2
Central West	3 524.6	1 710.9	1 981.8	7 217.4	17.6
South Eastern	2 851.6	1 450.6	2 454.1	6 756.2	16.4
Murrumbidgee	3 052.0	1 362.4	1 243.2	5 657.6	13.8
Murray	2 614.8	1 228.3	801.5	4 644.6	11.3
Far West	1 129.2	490.6	301.1	1 920.9	4.7
New South Wales					
1996	20 194.5	10 133.7	10 761.9	41 090.2	100.0
1995 ^r	n.c.	9 135.4	n.c.	40 514.2	100.0
1994	n.c.	10 836.2	n.c.	46 531.5	100.0

44

ESTABLISHMENTS WITH SHEEP AND LAMBS, At 31 March 1996

Statistical division	Breeding ewes (1 year and over)	Lambs and hoggets (under 1 year)	All other sheep	Total establishments with sheep and lambs	Percentage of establishments with sheep and lambs
	no.	no.	no.	no.	%
Sydney	48	39	53	63	0.3
Hunter	294	250	326	349	1.8
Illawarra	38	29	39	47	0.2
Richmond-Tweed	30	20	29	37	0.2
Mid-North Coast	42	26	40	52	0.3
Northern	2 873	2 565	3 052	3 253	16.3
North Western	2 885	2 610	2 931	3 149	15.8
Central West	3 836	3 430	3 972	4 263	21.4
South Eastern	2 823	2 561	3 027	3 146	15.8
Murrumbidgee	2 716	2 391	2 753	3 025	15.2
Murray	2 042	1 817	2 060	2 281	11.4
Far West	259	234	257	272	1.4
New South Wales					
1996	17 886	15 972	18 539	19 937	100.0
1995	n.c.	15 460	n.c.	19 447	100.0
1994	n.c.	15 995	n.c.	20 270	100.0

Flock size	1995r		1996	
	Establishments	Percentage of establishments with sheep and lambs	Establishments	Percentage of establishments with sheep and lambs
	no.	%	no.	%
1-499	4 330	22.3	4 642	23.3
500-999	3 485	17.9	3 667	18.4
1 000-1 499	2 806	14.4	2 859	14.3
1 500-1 999	2 075	10.7	2 145	10.8
2 000-2 499	1 521	7.8	1 514	7.6
2 500-2 999	1 158	6.0	1 085	5.4
3 000-3 999	1 446	7.4	1 418	7.1
4 000-4 999	896	4.6	866	4.3
5 000-5 999	515	2.6	504	2.5
6 000-6 999	350	1.8	335	1.7
7 000-7 999	239	1.2	254	1.3
8 000-8 999	156	0.8	135	0.7
9 000-9 999	123	0.6	118	0.6
10 000 and over	347	1.8	395	2.0
Total	19 447	100.0	19 937	100.0

Flock size	1995r		1996	
	Number of sheep and lambs	Percentage of total sheep and lambs	Number of sheep and lambs	Percentage of total sheep and lambs
	'000	%	'000	%
1-499	940.6	2.3	1 101.3	2.7
500-999	2 551.4	6.3	2 701.5	6.6
1 000-1 499	3 441.4	8.5	3 511.7	8.5
1 500-1 999	3 570.5	8.8	3 696.4	9.0
2 000-2 499	3 359.2	8.3	3 353.0	8.2
2 500-2 999	3 144.8	7.8	2 962.0	7.2
3 000-3 999	4 934.4	12.2	4 867.4	11.8
4 000-4 999	3 962.8	9.8	3 835.0	9.3
5 000-5 999	2 782.6	6.9	2 737.4	6.7
6 000-6 999	2 247.8	5.5	2 150.8	5.2
7 000-7 999	1 760.4	4.3	1 887.6	4.6
8 000-8 999	1 310.0	3.2	1 137.3	2.8
9 000-9 999	1 153.5	2.8	1 112.8	2.7
10 000 and over	5 354.7	13.2	6 035.9	14.7
Total	40 514.2	100.0	41 090.2	100.0

EWES TO BE MATED YEAR ENDED 31 MARCH 1997(c)

Statistical division	Ewes mated(a) '000	Lambs marked '000	Lamb marking ratio(b) %	Joined to merino rams '000	Joined to other rams '000	Total '000
Sydney	4.6	3.1	67.4	3.2	0.8	4.0
Hunter	149.4	119.6	80.1	113.3	47.9	161.3
Illawarra	5.1	5.0	98.0	2.1	3.7	5.7
Richmond-Tweed	0.7	0.3	42.9	—	0.5	0.5
Mid-North Coast	1.1	0.8	72.7	0.9	0.4	1.3
Northern	2 411.6	1 914.5	79.4	1 717.0	800.9	2 517.9
North Western	3 699.3	2 860.1	77.3	2 803.1	876.4	3 679.4
Central West	3 103.1	2 540.9	81.9	1 931.0	1 356.1	3 287.1
South Eastern	2 304.9	1 788.1	77.6	1 883.4	684.1	2 567.6
Murrumbidgee	2 689.6	2 064.7	76.8	1 592.4	1 356.4	2 948.8
Murray	2 277.9	1 745.9	76.6	1 729.7	716.9	2 446.6
Far West	900.1	553.0	61.4	964.5	15.7	980.2
New South Wales						
1996	17 547.4	13 596.2	77.5	12 740.6	5 859.7	18 600.3
1995	18 617.1	13 233.2	71.1	12 624.6	5 240.8	17 865.3
1994	19 393.2	15 164.1	78.2	13 470.5	6 753.9	20 224.4

(a) Ewes mated to produce lambs marked in the season shown.

(b) Lambs marked as a proportion of ewes mated to produce lambs.

(c) Forecast made at the end of the 1995-96 season.

Statistical division	Total pigs	Percentage of total pigs	Total establishments	Percentage of total establishments with pigs
	'000	%	no.	%
Sydney	40.6	5.7	35	3.1
Hunter	20.5	2.9	37	3.2
Illawarra	12.8	1.8	10	0.9
Richmond-Tweed	68.4	9.6	124	10.9
Mid-North Coast	9.8	1.4	41	3.6
Northern	66.9	9.4	155	13.6
North Western	40.1	5.6	122	10.7
Central West	73.7	10.4	315	27.7
South Eastern	40.0	5.6	61	5.4
Murrumbidgee	62.5	8.8	151	13.3
Murray	275.0	38.7	87	7.6
Far West	—	—	1	0.1
New South Wales				
1996	710.3	100.0	1 139	100.0
1995	790.5	100.0	1 322	100.0
1994	834.1	100.0	1 586	100.0

(a) Includes suckers, weaners, growers etc.

NUMBER OF ESTABLISHMENTS AND PIGS, By herd size(a), At 31 March

Herd size	1995.....		1996	
	Establishments no.	Percentage of establishments with pigs %	Establishments no.	Percentage of establishments with pigs %
1-9	226	17.1	181	15.9
10-19	120	9.1	102	9.0
20-29	101	7.6	89	7.8
30-39	65	4.9	61	5.4
40-49	54	4.1	43	3.8
50-69	99	7.5	74	6.5
70-99	85	6.4	64	5.6
100-149	92	7.0	82	7.2
150-199	77	5.8	57	5.0
200-299	81	6.1	84	7.4
300-499	109	8.2	96	8.4
500-699	56	4.2	51	4.5
700-999	43	3.3	47	4.1
1 000 and over	114	8.6	108	9.5
New South Wales	1 322	100.0	1 139	100.0

Herd size	1995		1996	
	Number of pigs '000	Percentage of total pigs %	Number of pigs '000	Percentage of total pigs %
1-9	0.9	0.1	0.8	0.1
10-19	1.6	0.2	1.3	0.2
20-29	2.4	0.3	2.1	0.3
30-39	2.1	0.3	2.0	0.3
40-49	2.3	0.3	1.9	0.3
50-69	5.7	0.7	4.2	0.6
70-99	6.9	0.9	5.3	0.7
100-149	11.1	1.4	9.8	1.4
150-199	12.9	1.6	9.4	1.3
200-299	18.7	2.4	19.7	2.8
300-499	40.8	5.2	35.5	5.0
500-699	32.3	4.1	29.1	4.1
700-999	34.5	4.4	39.1	5.5
1 000 and over	618.4	78.2	550.3	77.5
New South Wales	790.5	100.0	710.3	100.0

(a) Includes suckers, weaners, growers etc.

LAYERS.....

MEAT CHICKENS.....

Statistical division	Hens for egg production for human consumption	Replacement stock	Breeding stock	Grown on contract	Grown on own account	Breeding stock
	'000	'000	'000	'000	'000	'000
Sydney	1 816.6	481.1	34.1	8 868.1	2 581.1	799.8
Hunter	377.1	66.3	1.0	12 015.8	0.9	392.4
Illawarra	22.2	4.0	—	—	—	58.2
Richmond-Tweed	33.2	0.8	—	1 285.9	0.1	60.4
Mid-North Coast	35.3	31.9	—	—	89.0	—
Northern	786.7	434.9	26.5	546.8	735.6	702.7
North Western	12.2	8.2	—	—	19.0	—
Central West	90.2	66.0	—	—	—	—
South Eastern	198.8	29.2	—	—	—	—
Murrumbidgee	462.5	6.4	1.5	—	2 900.0	200.0
Murray	119.5	2.1	—	—	0.2	—
Far West	—	—	—	—	—	—
New South Wales	3 954.4	1 130.9	63.2	22 716.6	6 325.9	2 042.6

OTHER POULTRY.....

Statistical division	Ducks	Turkeys
	'000	'000
Sydney	140.5	424.6
Hunter	24.4	518.6
Illawarra	—	—
Richmond-Tweed	—	—
Mid-North Coast	0.3	—
Northern	5.2	115.4
North Western	—	—
Central West	—	0.1
South Eastern	0.1	—
Murrumbidgee	—	—
Murray	—	—
Far West	—	—
New South Wales	170.6	2 534.7

LAYERS..... EGGS.....

Statistical division	Hens for egg production for human consumption	Replacement stock	Day old chicks sold	Breeding stock	Production of eggs for human consumption
	'000	'000	'000	'000	'000 dozens
Sydney	977.1	213.9	70.7	81.7	29 501.2
Hunter	364.8	2.5	4.0	0.5	5 862.6
Illawarra	15.2	—	—	—	312.9
Richmond-Tweed	111.9	0.2	1.1	—	535.3
Mid-North Coast	32.4	1.2	—	—	580.3
Northern	479.4	110.0	318.5	22.0	13 706.8
North Western	9.6	—	—	—	219.2
Central West	58.0	—	—	—	1 494.7
South Eastern	102.1	35.0	38.0	—	3 332.7
Murrumbidgee	504.3	—	30.0	0.5	6 651.1
Murray	86.6	—	—	—	2 768.1
Far West	—	—	—	—	—
New South Wales	2 741.4	362.8	462.3	104.8	64 964.9

MEAT CHICKENS..... OTHER POULTRY..... PROCESSED POULTRY SOLD

Statistical division	Grown on contract	Grown on own account	Day old chicks sold	Breeding stock	Ducks	Turkeys	Reared on holding	Other processed poultry
	'000	'000	'000	'000	'000	'000	'000	'000
Sydney	40 374.7	17 391.7	37 411.2	628.9	2 478.2	2 927.1	2 671.5	741.3
Hunter	23 868.3	—	10 862.7	392.4	55.8	1 276.1	2 225.5	—
Illawarra	411.4	—	—	58.2	—	—	—	—
Richmond-Tweed	8 277.2	0.1	—	60.4	—	—	46.8	—
Mid-North Coast	—	400.0	—	—	0.6	—	50.5	0.9
Northern	2 244.6	5 619.5	187.4	702.7	—	231.4	403.0	4.3
North Western	—	95.0	—	—	—	—	95.0	—
Central West	—	—	—	—	0.1	0.1	—	—
South Eastern	—	—	—	—	—	—	—	—
Murrumbidgee	—	—	—	200.0	—	4.0	20 504.0	80.0
Murray	—	0.2	—	—	—	—	—	6.0
Far West	—	—	—	—	—	—	—	—
New South Wales	75 176.3	23 506.4	48 461.4	2 042.6	2 534.7	4 438.6	25 996.2	832.5

Statistical division	ESTABLISHMENTS		LIVESTOCK	
	Deer no.	Horses for breeding(a) no.	Deer '000	Horses for breeding(a) '000
Sydney	15	137	2.5	2.5
Hunter	16	330	4.8	6.0
Illawarra	12	84	1.6	1.1
Richmond-Tweed	2	173	—	0.8
Mid-North Coast	29	222	3.6	1.4
Northern	29	516	2.5	4.3
North Western	10	198	1.9	1.8
Central West	22	291	9.7	3.2
South Eastern	36	276	5.5	2.5
Murrumbidgee	12	180	1.4	1.7
Murray	21	144	4.6	1.2
Far West	—	11	—	0.1
New South Wales				
1996	204	2 562	38.0	27.0
1995	235	2 446	39.6	25.0
1994	192	2 184	44.2	30.1

(a) Comprises horses on establishments with agricultural activity.

Statistical division	Dairy bulls	Beef bulls	Other cattle	Pigs
	'000	'000	'000	'000
Sydney	—	0.2	18.4	79.0
Hunter	0.2	1.9	215.6	32.6
Illawarra	0.2	0.6	41.9	21.3
Richmond-Tweed	0.1	1.2	124.3	141.7
Mid-North Coast	0.1	1.0	139.0	21.0
Northern	0.1	6.8	700.8	124.8
North Western	0.1	3.2	330.4	75.3
Central West	0.1	2.8	269.6	155.1
South Eastern	0.1	2.9	202.4	104.2
Murrumbidgee	—	1.6	224.1	112.2
Murray	0.2	2.6	236.4	627.6
Far West	—	—	30.8	—
New South Wales	1.4	24.9	2 533.7	1 494.9

Statistical division	Lambs and hoggets	All other sheep	Horses	Deer
	'000	'000	'000	'000
Sydney	1.2	3.9	0.5	0.6
Hunter	34.9	87.0	1.3	4.6
Illawarra	3.7	1.7	0.2	0.5
Richmond-Tweed	1.4	0.4	0.1	—
Mid-North Coast	0.2	0.2	0.2	1.9
Northern	781.3	1 089.7	0.7	0.6
North Western	1 137.8	1 592.5	0.2	0.3
Central West	1 486.8	1 380.9	0.5	2.9
South Eastern	593.3	1 125.4	0.3	1.8
Murrumbidgee	1 235.5	950.4	0.2	0.6
Murray	828.0	902.6	0.2	1.0
Far West	127.6	339.8	—	—
New South Wales	6 231.6	7 474.5	4.5	14.9

	Units	1994	1995	1996
Number of livestock slaughtered(a)(b)				
Cattle	'000	1 987.9	2 049.0	1 964.0
Calves	000	221.4	248.3	244.6
Chickens	'000	129 735.5	133 927.4	133 756.6
Lambs	'000	3 991.7	4 133.7	3 482.4
Pigs	'000	1 490.9	1 505.4	1 414.8
Sheep	'000	6 066.9	6 577.8	5 657.9
	'000			
Meat produced(a)(c)				
Beef	tonnes	466 387	471 183	458 701
Chicken	tonnes	193 137	199 589	199 152
Lamb	tonnes	69 246	71 738	63 656
Mutton	tonnes	127 582	131 052	120 880
Pig	tonnes	98 606	102 175	96 240
Veal	tonnes	17 551	16 677	16 292
Whole milk intake by factories(d)				
	million litres	1 098	1 087	1 114
Wool(e)				
Brokers and dealer receivals of taxable wool	tonnes	205 822	177 649	165 550
Eggs produced(f)				
	'000 dozen	67 802	64 032	64 965
Honey produced(f)				
	tonnes	11 270	7 754	11 884

(a) Source: ABS "Monthly Livestock Products" publication, Catalogue No. 7215.0.

(b) Includes estimates of animals slaughtered on farms and country butchers.

(c) Dressed carcass weight, excluding offal.

(d) Source: Australian Dairy Corporation.

(e) Sources: National Council of Wool Selling Brokers of Australia and ABS Wool Brokers and Dealers Collection.

(f) Collected at 31 March.

	1993-94	1994-95r	1995-96p
	\$m	\$m	\$m
Livestock slaughterings(a)			
Cattle and calves	1 088.8	1 066.4	862.3
Pigs	187.0	195.9	188.5
Poultry(b)	420.3	419.3	435.3
Sheep and lambs(c)	201.5	227.7	264.9
Other	5.5	9.4	5.8
Total	1 903.2	1 918.3	1 756.8
Wool			
Shorn and crutched	837.0	1 143.8	846.9
Other(d)	40.4	42.4	27.7
Total	877.4	1 186.2	874.6
Production of milk			
Human consumption	273.3	309.5	341.5
Manufacturing	130.2	126.4	165.9
Total	403.5	435.9	507.3
Eggs	78.0	72.5	88.3
Honey and beeswax	15.0	10.4	13.8

(a) Includes net exports of livestock.

(b) Includes the Australian Capital Territory.

(c) Excludes value of wool on skins.

(d) Includes dead and fellmongered wool and wool on skins.

	Units	1994	1995	1996p
Apiculturists	no.	726	485	596
Beehives				
Productive(a)	no.	163 557	125 305	157 061
Unproductive	no.	76 216	77 759	47 272
Total	no.	239 773	203 064	204 333
Honey produced				
Quantity	kg	11 270 324	7 753 661	11 883 601
Average production(b)	kg/hive	69	62	76
Beeswax produced	kg	232 674	137 574	296 866

(a) Beehives from which honey was taken.

(b) Average production per productive beehive.

POULTRY 0141-0142

FRUIT 0114-0119

Items	1993-94		1994-95		1993-94		1994-95	
	\$m	SE %	\$m	SE %	\$m	SE %	\$m	SE %
Sales from crops	1.9	54	n.p.	n.p.	265.3	8	319.7	14
Sales from livestock	129.5	24	n.p.	n.p.	3.8	26	27.2	73
Sales from livestock products	115.9	11	n.p.	n.p.	0.9	60	2.9	73
Turnover	277.6	11	n.p.	n.p.	284.6	8	365.3	11
Purchases and selected expenses	157.9	18	n.p.	n.p.	132.3	8	184.9	12
Value added(a)	118.6	14	n.p.	n.p.	153.8	9	171.3	16
Adjusted value added(a)	100.6	15	n.p.	n.p.	134.3	10	147.8	17
Gross operating surplus(a)	73.6	20	n.p.	n.p.	75.6	16	69.5	24
Interest paid	12.3	13	n.p.	n.p.	15.5	16	20.5	25
Cash operating surplus(b)	62.6	18	n.p.	n.p.	57.8	21	62.0	22
Gross indebtedness	165.9	12	n.p.	n.p.	173.1	14	268.1	24
Total net capital expenditure	16.9	35	n.p.	n.p.	22.2	26	14.5	29

VEGETABLES 0113

GRAIN 0121

Items	1993-94		1994-95		1993-94		1994-95	
	\$m	SE %	\$m	SE %	\$m	SE %	\$m	SE %
Sales from crops	109.8	16	127.2	41	722.0	12	436.7	21
Sales from livestock	6.6	29	5.4	76	102.7	17	59.8	20
Sales from livestock products	2.0	47	4.0	74	44.6	20	32.7	49
Turnover	128.6	16	145.5	41	910.2	11	558.7	19
Purchases and selected expenses	62.5	16	71.6	42	490.5	12	298.1	21
Value added(a)	69.6	18	72.4	41	455.6	11	264.6	19
Adjusted value added(a)	61.5	19	66.0	41	407.5	12	234.4	19
Gross operating surplus(a)	33.5	21	34.7	40	366.3	12	190.4	21
Interest paid	3.5	22	6.4	67	50.9	17	28.9	22
Cash operating surplus(b)	26.5	23	28.4	35	283.9	13	161.7	25
Gross indebtedness	81.1	40	68.1	52	509.7	14	380.1	26
Total net capital expenditure	16.5	40	18.5	48	65.2	23	100.0	23

(a) Includes an estimate for the value of the increase in livestock.

(b) Excludes an estimate for the value of the increase in livestock.

NOTE: Standard error of change between two successive years is 1.3 times the standard error of the estimate (except for the all industries estimate where it is equal to the standard error of the estimate). Standard error of change between estimates two years apart could be as high as 1.8 times the standard error of the estimate (except for the all industries estimate where it could be 1.5 times the standard error of the estimate).

Items	GRAIN-SHEEP/BEEF CATTLE 0122				SHEEP-BEEF CATTLE 0123			
	1993-94	SE	1994-95	SE	1993-94	SE	1994-95	SE
	\$m	%	\$m	%	\$m	%	\$m	%
Sales from crops	560.6	10	326.3	15	22.4	52	88.7	47
Sales from livestock	270.3	11	335.4	21	315.1	15	452.2	11
Sales from livestock products	196.5	11	244.3	11	184.4	14	368.0	13
Turnover	1 089.7	9	984.2	11	554.7	12	1 000.9	12
Purchases and selected expenses	640.0	9	651.8	13	352.7	14	576.5	12
Value added(a)	576.0	9	256.8	19	414.3	11	296.4	16
Adjusted value added(a)	497.1	10	171.7	27	353.4	12	212.5	21
Gross operating surplus(a)	417.7	11	88.1	53	281.8	14	131.2	32
Interest paid	83.1	16	103.8	16	42.6	23	73.5	15
Cash operating surplus(b)	201.6	18	64.3	76	31.1	98	200.4	21
Gross indebtedness	893.8	15	1 126.9	15	538.9	22	850.1	16
Total net capital expenditure	90.8	19	89.9	23	62.2	21	52.0	22

Items	SHEEP 0124				BEEF CATTLE 0125			
	1993-94	SE	1994-95	SE	1993-94	SE	1994-95	SE
	\$m	%	\$m	%	\$m	%	\$m	%
Sales from crops	40.3	30	30.6	42	16.3	30	16.2	25
Sales from livestock	143.0	14	185.1	14	654.7	14	642.5	15
Sales from livestock products	363.3	13	485.6	12	19.6	36	29.3	34
Turnover	594.8	12	746.0	11	779.7	13	776.6	14
Purchases and selected expenses	328.1	12	406.2	12	503.7	13	549.4	16
Value added(a)	405.8	12	237.7	17	468.6	19	54.8	91
Adjusted value added(a)	351.9	13	160.1	22	404.6	21	-3.4	**
Gross operating surplus(a)	286.5	14	80.9	39	337.1	22	-56.7	88
Interest paid	44.7	22	62.9	20	60.8	33	38.2	23
Cash operating surplus(b)	105.8	26	119.2	23	95.7	40	99.7	45
Gross indebtedness	448.4	22	685.7	21	597.6	41	459.0	22
Total net capital expenditure	46.5	26	73.8	26	46.1	25	59.5	17

(a) Includes an estimate for the value of the increase in livestock.

(b) Excludes an estimate for the value of the increase in livestock.

NOTE: Standard error of change between two successive years is 1.3 times the standard error of the estimate (except for the all industries estimate where it is equal to the standard error of the estimate). Standard error of change between estimates two years apart could be as high as 1.8 times the standard error of the estimate (except for the all industries estimate where it could be 1.5 times the standard error of the estimate).

DAIRY CATTLE 0130

PIGS 0151

Items	1993-94		1994-95		1993-94		1994-95	
	\$m	SE %	\$m	SE %	\$m	SE %	\$m	SE %
Sales from crops	8.3	79	3.5	66	14.4	75	7.7	*
Sales from livestock	32.1	14	34.1	15	168.6	8	177.3	6
Sales from livestock products	361.5	12	360.9	8	1.9	39	3.9	84
Turnover	430.8	11	411.5	8	191.5	9	203.5	9
Purchases and selected expenses	220.0	10	258.3	9	123.7	9	137.5	7
Value added(a)	228.5	16	261.6	7	78.2	11	63.3	18
Adjusted value added(a)	204.7	16	240.5	9	71.5	11	55.1	20
Gross operating surplus(a)	169.1	16	208.0	12	54.1	13	32.9	26
Interest paid	24.4	32	20.8	19	5.8	20	7.6	41
Cash operating surplus(b)	126.5	16	75.1	24	38.1	16	28.4	51
Gross indebtedness	275.7	33	222.7	18	60.3	19	76.7	33
Total net capital expenditure	33.9	32	17.3	32	5.2	23	10.6	45

SUGAR 0161

COTTON 0162

Items	1993-94		1994-95		1993-94		1994-95	
	\$m	SE %	\$m	SE %	\$m	SE %	\$m	SE %
Sales from crops	57.3	38	62.0	18	448.5	8	407.3	13
Sales from livestock	1.9	60	1.8	35	25.3	8	14.1	13
Sales from livestock products	0.2	93	—	—	10.9	12	6.9	12
Turnover	61.9	38	65.3	18	546.4	8	485.8	11
Purchases and selected expenses	30.3	30	40.2	22	331.1	8	307.3	11
Value added(a)	31.5	45	25.3	36	222.7	10	178.9	13
Adjusted value added(a)	27.7	47	22.2	39	194.0	11	145.7	16
Gross operating surplus(a)	25.4	49	18.3	46	141.3	14	92.2	24
Interest paid	2.7	69	5.5	45	28.3	15	46.7	14
Cash operating surplus(b)	23.6	48	13.2	77	105.6	18	45.8	51
Gross indebtedness	65.4	81	60.3	55	453.5	10	621.1	15
Total net capital expenditure	4.0	77	8.9	41	54.2	17	41.5	16

(a) Includes an estimate for the value of the increase in livestock.

(b) Excludes an estimate for the value of the increase in livestock.

NOTE: Standard error of change between two successive years is 1.3 times the standard error of the estimate (except for the all industries estimate where it is equal to the standard error of the estimate). Standard error of change between estimates two years apart could be as high as 1.8 times the standard error of the estimate (except for the all industries estimate where it could be 1.5 times the standard error of the estimate).

Items	OTHER AGRICULTURE 0111-0112, 0141-0142, 0152-0159, 0169.....				AGRICULTURE ALL INDUSTRIES			
	1993-94		1994-95		1993-94		1994-95	
	\$m	SE %	\$m	SE %	\$m	SE %	\$m	SE %
Sales from crops	156.3	32	276.5	27	2 423.4	4	2 102.6	7
Sales from livestock	34.6	24	94.1	44	1 888.1	6	2 029.0	6
Sales from livestock products	9.7	49	149.2	24	1 311.6	5	1 687.6	5
Turnover	208.6	23	578.1	16	6 059.0	3	6 321.3	4
Purchases and selected expenses	113.9	20	352.9	15	3 486.6	3	3 834.8	4
Value added(a)	89.0	35	183.3	31	3 312.2	4	2 066.4	6
Adjusted value added(a)	66.2	42	129.2	41	2 875.1	4	1 581.9	8
Gross operating surplus(a)	17.3	**	7.2	*	2 279.2	5	896.8	12
Interest paid	12.4	20	32.5	21	386.8	7	447.4	6
Cash operating surplus(b)	11.2	90	13.8	*	1 170.1	7	912.0	11
Gross indebtedness	144.0	19	324.5	21	4 407.4	8	5 143.2	6
Total net capital expenditure	11.2	39	23.2	33	475.0	7	507.6	8

(a) Includes an estimate for the value of the increase in livestock.

(b) Excludes an estimate for the value of the increase in livestock.

NOTE: Standard error of change between two successive years is 1.3 times the standard error of the estimate (except for the all industries estimate where it is equal to the standard error of the estimate). Standard error of change between estimates two years apart could be as high as 1.8 times the standard error of the estimate (except for the all industries estimate where it could be 1.5 times the standard error of the estimate).

AGGREGATES

Items	1990-91	SE	1991-92	SE	1992-93r	SE
	\$m	%	\$m	%	\$m	%
Sales from crops	1 864.9	7	2 123.9	5	2 199.5	4
Sales from livestock	1 388.4	5	1 327.9	5	1 379.4	5
Sales from livestock products	1 978.2	4	1 351.8	4	1 246.7	3
Turnover	5 613.1	3	5 137.7	2	5 156.6	2
Purchases and selected expenses	3 268.1	3	2 943.2	3	3 033.8	3
Value added(a)	1 674.2	7	2 159.1	6	2 248.8	4
Adjusted value added(a)	1 252.3	8	1 766.7	7	1 862.0	5
Gross operating surplus(a)	702.5	14	1 194.2	10	1 305.3	7
Interest paid	684.6	6	628.1	11	422.8	7
Cash operating surplus(b)	798.7	13	670.2	16	811.3	9
Gross indebtedness	4 325.6	6	4 691.1	8	4 355.1	7
Total net capital expenditure	301.0	10	412.2	13	383.8	10

AGGREGATES

Items	1993-94	SE	1994-95r	SE	1995-96p	SE
	\$m	%	\$m	%	\$m	%
Sales from crops	2 423.4	4	2 102.6	7	3 045.1	6
Sales from livestock	1 888.1	6	2 029.0	6	1 880.4	6
Sales from livestock products	1 311.6	5	1 687.6	5	1 307.0	6
Turnover	6 059.0	3	6 321.3	4	6 869.1	4
Purchases and selected expenses	3 486.6	3	3 834.8	4	4 078.4	4
Value added(a)	3 312.2	4	2 066.4	6	n.y.a.	n.y.a.
Adjusted value added(a)	2 875.1	4	1 581.9	8	n.y.a.	n.y.a.
Gross operating surplus(a)	2 279.2	5	896.8	12	n.y.a.	n.y.a.
Interest paid	386.8	7	447.4	6	n.y.a.	n.y.a.
Cash operating surplus(b)	1 170.1	7	912.0	11	1 275.9	10
Gross indebtedness	4 407.4	8	5 143.2	6	n.y.a.	n.y.a.
Total net capital expenditure	475.0	7	507.6	8	n.y.a.	n.y.a.

(a) Includes an estimate for the value of the increase in livestock.

(b) Excludes an estimate for the value of the increase in livestock.

NOTE: Standard error of change between two successive years is 1.3 times the standard error of the estimate (except for the all industries estimate where it is equal to the standard error of the estimate). Standard error of change between estimates two years apart could be as high as 1.8 times the standard error of the estimate (except for the all industries estimate where it could be 1.5 times the standard error of the estimate).

AVERAGES

Items	1990-91	1991-92	1992-93	1993-94	1994-95	1995-96p
	\$'000	\$'000	\$'000	\$'000	\$'000	\$'000
Sales from crops	61.2	68.8	76.4	80.6	68.6	n.y.a.
Sales from livestock	45.6	43.0	47.9	62.8	66.2	n.y.a.
Sales from livestock products	64.9	43.8	43.3	43.6	55.1	n.y.a.
Turnover	184.2	166.3	179.1	201.4	206.4	n.y.a.
Purchases and selected expenses	107.2	95.3	105.4	115.9	125.2	n.y.a.
Value added(a)	54.9	69.9	78.1	1 101.1	67.5	n.y.a.
Adjusted value added(a)	41.1	57.2	64.7	95.6	51.6	n.y.a.
Gross operating surplus(a)	23.0	38.7	45.3	75.8	29.3	n.y.a.
Interest paid	22.5	20.3	14.7	12.9	14.6	n.y.a.
Cash operating surplus(b)	26.2	21.7	28.2	38.9	29.8	n.y.a.
Gross indebtedness	141.9	151.9	151.3	146.5	167.9	n.y.a.
Total net capital expenditure	9.9	13.3	13.3	15.8	16.6	n.y.a.

(a) Includes an estimate for the value of the increase in livestock.

(b) Excludes an estimate for the value of the increase in livestock.

NOTE: Standard error of change between two successive years is 1.3 times the standard error of the estimate (except for the all industries estimate where it is equal to the standard error of the estimate). Standard error of change between estimates two years apart could be as high as 1.8 times the standard error of the estimate (except for the all industries estimate where it could be 1.5 times the standard error of the estimate).

EXPLANATORY NOTES

INTRODUCTION

1 This publication contains statistics on crops, livestock and livestock products and characteristics of farms; it includes some summary information on the financial performance of agricultural industries and the value of agricultural commodities produced.

SCOPE AND COVERAGE

2 The statistics on crops (including horticulture), livestock numbers, structure of agricultural industries, land management and farm inputs are derived from the annual agricultural census conducted throughout Australia at 31 March, which collects data from establishments with agricultural activity.

3 Establishments which make only a small contribution to overall agricultural production are excluded from the scope of the census. Information is collected from establishments when their estimated value of agricultural operations (EVAO) is above a certain level. These levels have varied in past agricultural censuses, as follows:

- 1993-94 to present EVAO \$5,000 and over;
- 1991-92 to 1992-93 EVAO \$22,500 and over;
- 1986-87 to 1990-91 EVAO \$20,000 and over; and
- before 1986-87 EVAO \$2,500 and over.

4 Table 1 shows the number of agricultural establishments having an EVAO of \$5,000 and over according to the population frame selected for the agricultural census. Once data on these units are collected and processed a small number of them are found to have an EVAO of less than \$5,000. These are shown in the first column in table 5. Some units are found to have an EVAO of zero; these are shown as 'unclassified' in tables 1, 2, 5 and 6.

5 The effect of the lower EVAO cut off of \$5,000 and over from 1993-94 onwards is to include smaller agricultural establishments that have been excluded in previous years. However, because of their small size they are not expected to change greatly the overall commodity totals. Nevertheless, the changes in scope between years mean that care must be taken in comparing census results over time.

6 Information covering commodities such as livestock slaughterings, dairy produce and beekeeping is obtained from separate ABS collections and from organisations such as the Australian Dairy Corporation.

REFERENCE PERIOD

7 Statistics about crops, pastures, vegetables and fruit relate, in general, to the season ended 31 March. Where harvesting was not completed by 31 March 1996 (for example, maize, rice, apples, grapes and late planted potatoes), the production statistics relate to the completed harvest.

ESTABLISHMENTS WITH AGRICULTURAL ACTIVITY

8 An establishment with agricultural activity is a single physical location which is used for the production of crops (including fruit and vegetables) and/or for the raising of livestock and the production of livestock products.

EXPLANATORY NOTES *continued*

INDUSTRY AND SIZE CLASSIFICATION

9 Establishments in the agricultural sector were classified in accordance with the methodology described in the 1993 *Australian and New Zealand Standard Industrial Classification (ANZSIC)* (1292.0).

10 The process of determining the industry class for ANZSIC is the 'step by step' method of classification described in Chapter 4 of the *Australian Standard Industrial Classification* (1201.0). This method requires that the Division code of the unit be determined first. The Subdivision code within the major Division of the unit is then determined, followed by the Group code and finally the Class code of the unit.

11 The Group and Class codes of agricultural units are determined annually by valuing physical crop and livestock information collected in the agricultural census. The valuation procedure allows for the industry classification of individual units to be changed to reflect significant or long term changes in their activities.

12 However, the procedure provides for a dampening or resistance effect to offset instability in allocation to particular classes of the classification which would arise from short-term factors such as floods and drought. To obviate such effects, the valuation procedure takes into account (without double counting) the area of crops sown and numbers of livestock on holdings at a point in time as well as the crops produced and livestock turnoff during the year. The resultant aggregation of these commodity values is termed the Estimated Value of Agricultural Operations (EVAO). It should be noted that EVAO is applicable *only for industry coding and size valuation purposes*. It is not an indicator of receipts obtained by units or of the value of agricultural commodities produced by these units.

DEFINITIONS OF TERMS USED

13 The following are definitions of terms used in the tables of this publication:

- *agricultural establishment* is an establishment which is engaged *mainly* in agricultural activities; and
- *establishment with agricultural activity* is a land-based establishment which is engaged in agricultural activity, regardless of the unit's predominant activity.

CROPS, PASTURES AND HORTICULTURE

14 Statistics of areas and production of crops relate, in the main, to crops sown during the year ended 31 March. Statistics of perennial crops relate to the position as at 31 March and the production during the year ended on that date, or of fruit set by that date. For example, particulars of area, production and yield per hectare of wheat in Australia refer to wheat sown during the period from April to September and harvested between October and the following February, i.e. the 1995-96 season relates to the harvesting period October 1995 to February 1996.

Statistics of other crops which in some States are harvested after 31 March 1996 (e.g. maize, potatoes, apples and pears) are collected by supplementary census returns and are included in this publication.

EXPLANATORY NOTES *continued*

LIVESTOCK SLAUGHTERING AND LIVESTOCK PRODUCTS

15 The statistics on slaughtering and meat production are based on a monthly collection from abattoirs and other major slaughtering establishments and include estimates of animals slaughtered on farms and by country butchers and other small slaughtering establishments. Care should be taken when using this information as the figures only relate to slaughtering for human consumption and do not include animals condemned or those killed for boiling down. Also, definitions of livestock categories may differ between States and within States, particularly with regard to calves. More detailed information is published monthly in *Livestock Products, Australia* (7215.0).

WOOL

16 Wool receivals statistics show the amount of taxable wool received by brokers and dealers from wool producers. They exclude wool received by brokers on which wool tax has already been paid by other dealers (private buyers) or brokers. The information shown is on the basis of the State in which the wool has actually been received and does not necessarily reflect the production of wool in that State. These data are published monthly in *Livestock Products, Australia* (7215.0).

17 The wool estimates contained in table 53 are obtained from these major sources:

(i) A monthly collection of National Council of Wool Selling Brokers of Australia in each State and incorporated in this publication with reference to the twelve months to 30 June. The data are compiled in terms of bales received into stores and converted to wool receivals in tonnes.

(ii) A monthly ABS collection of other wool brokers and dealers in each State, also incorporated with reference to the twelve months to 30 June. Data are reported in tonnes, or converted to tonnes as required.

MILK

18 These statistics have been collected by the Australian Dairy Corporation (ADC). More detailed information is published monthly in *Livestock Products, Australia*, (7215.0).

POULTRY

19 Poultry slaughtering statistics have been compiled from returns supplied by commercial poultry slaughtering establishments.

BEEKEEPING

20 Beekeepers are included in this collection if they have a minimum EVAO of \$5,000, whether for beekeeping alone or in conjunction with other agricultural activities.

AGRICULTURAL FINANCE SURVEY

21 The financial estimates in this publication have been derived from estimates from the Agricultural Finance Survey (AFS). The survey aims to meet demands of users who require annual financial statistics on a consistent basis across all agricultural industries in each State and Australia.

22 More detailed information including an outline of the reliability of the estimates and their standard errors is published in *Agricultural Industries Financial Statistics, Australia* (7507.0).

EXPLANATORY NOTES *continued*

SCOPE AND COVERAGE OF THE AFS

23 The population of the AFS consisted of all economic units (management units) the principal activity of which resulted in them being classified within Sub-division 01 'Agriculture' of the ANZSIC and which had an EVAO of \$22,500 or more.

VALUE OF AGRICULTURAL COMMODITIES PRODUCED

24 This publication contains summary information on the value of agricultural commodities produced (VACP) compiled annually for all States and Australia. The summary information contains gross values of production for selected agricultural commodities. More detailed information is available in *Value of Agricultural Commodities Produced, Australia* (7503.0).

SCOPE AND COVERAGE OF VACP STATISTICS

25 The statistics are derived by multiplying quantity data by price (or unit value) data. The quantity data are collected in the agricultural censuses and other ABS collections with some information from external sources. All price information is obtained from non-ABS sources.

PRICE AND MARKETING COSTS DATA

26 The method of collection of relevant prices for, and the costs of marketing of agricultural commodities vary considerably between States and between commodities. Where a statutory authority handles marketing of the whole or portion of a product (e.g. Australian Wheat Board, Australian Barley Board) data are usually obtained from this source. Information is also obtained from marketing reports, wholesalers, brokers and auctioneers. For all commodities, values are in respect of production during the year (or season) irrespective of whether or when payments are made. For that portion of production not marketed (e.g. hay grown on farm for own use, milk used in farm household, etc.) estimates are made from the best available information and, in general, are valued on a local value basis.

DEFINITION OF GROSS VALUE

27 Gross value of commodities produced is the value placed on recorded production at the wholesale prices realised in the market place.

OTHER FORMS OF RELEASE

28 The ABS also has more detailed agricultural statistics on microfiche and floppy disk. AgStats on floppy disk offers a wider range of data aggregated at smaller geographic areas than those generally available in printed publications, together with an easy-to-use interrogation facility.

29 Current publications produced by the ABS are listed in the *Catalogue of Publications and Products, Australia* (1101.0). The ABS also issues, on Tuesdays and Fridays, a *Publications Advice* (1105.0) which lists publications to be released in the next few days. The Catalogue and Publications Advice are available from any ABS office.

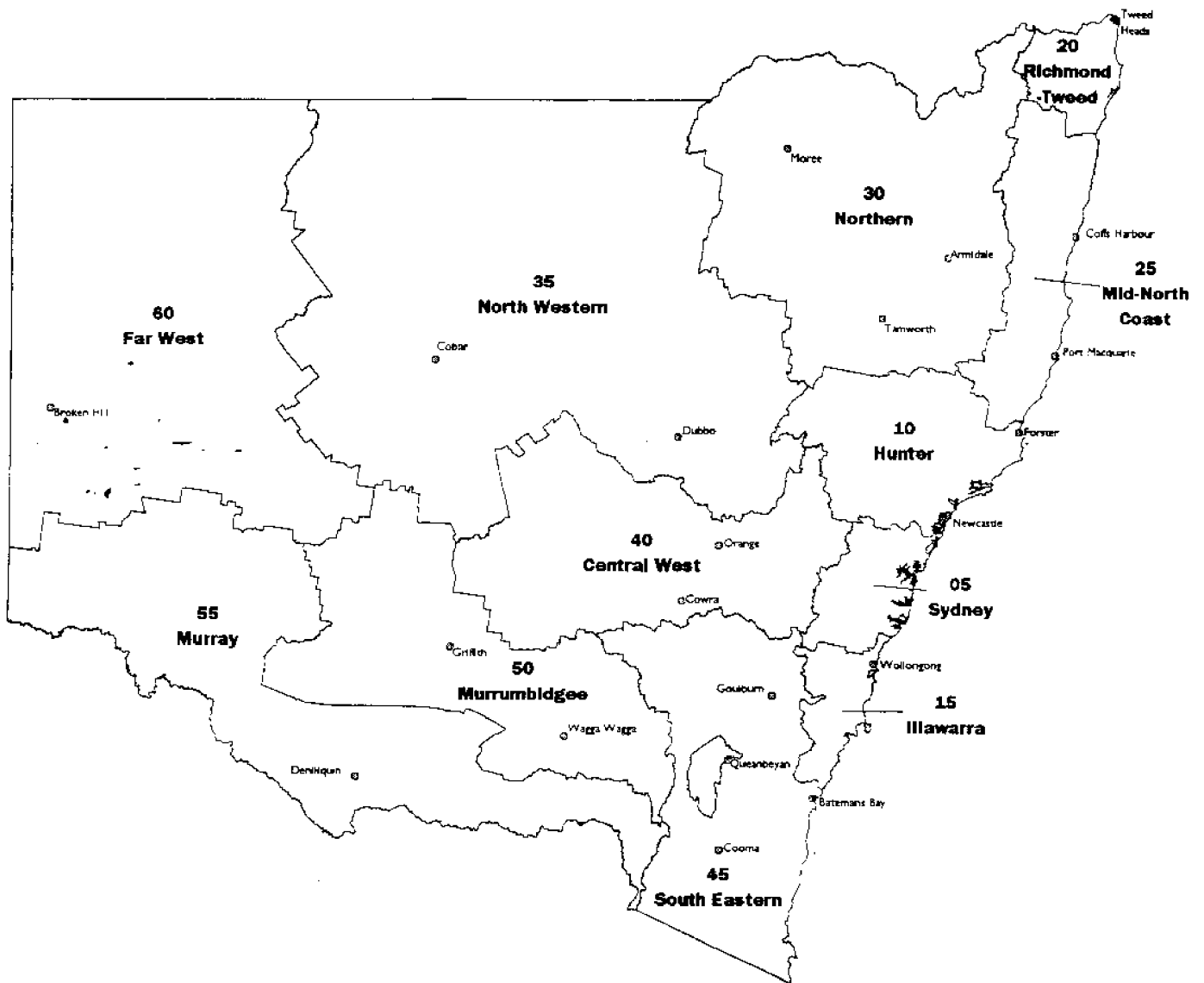
UNPUBLISHED STATISTICS

30 As well as the statistics in this and related publications, the ABS may have other unpublished data available. Enquires should be directed to Helen Gardiner on (02) 9268 4562.

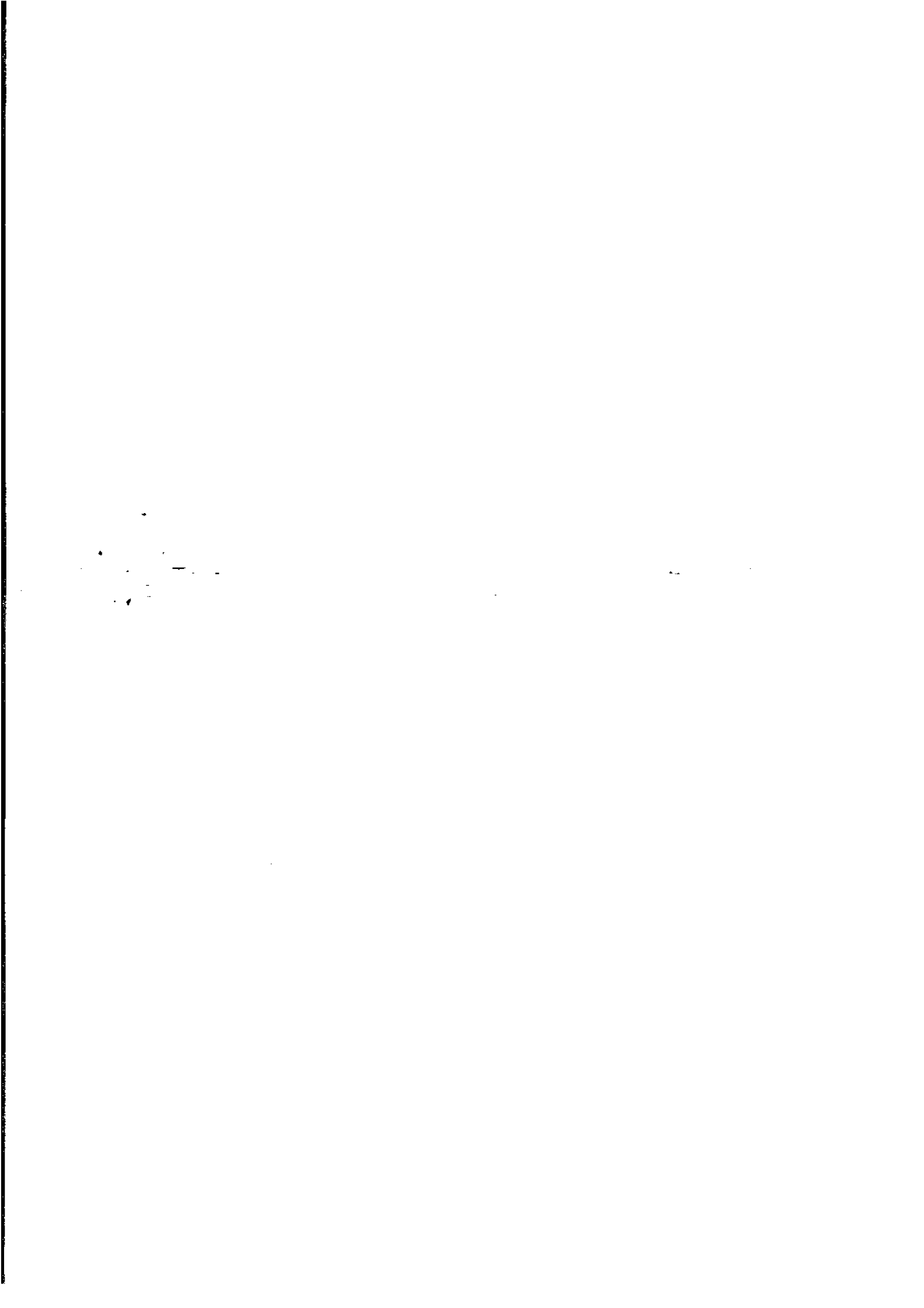
31 The figures shown in this publication have been revised where necessary and as a consequence may not agree with similar data shown in previous publications.

32 Where the figures have been rounded, discrepancies may occur between sums of the component items and totals.

STATISTICAL DIVISIONS OF NEW SOUTH WALES







For more information . . .

The ABS publishes a wide range of statistics and other information on Australia's economic and social conditions. Details of what is available in various publications and other products can be found in the ABS Catalogue of Publications and Products available from all ABS Offices.

ABS Products and Services

Many standard products are available from ABS bookshops located in each State and Territory. In addition to these products, information tailored to the needs of clients can be obtained on a wide range of media by contacting your nearest ABS Office. The ABS also provides a Subscription Service for standard products and some tailored information services.

National Dial-a-Statistic Line

0055 86 400

Steadycom P/L: premium rate 25c/20 secs.

This number gives 24-hour access, 365 days a year, for a range of important economic statistics including the CPI.

Internet

<http://www.abs.gov.au>

A wide range of ABS information is available via the Internet, with basic statistics available for each State, Territory and Australia. We also have Key National Indicators, ABS product release details and other information of general interest.

Sales and Inquiries

client.services@abs.gov.au

National Mail Order Service
Subscription Service

(06) 252 5249
1800 02 0608

Information Inquiries

SYDNEY	(02)	9268 4611
MELBOURNE	(03)	9615 7755
BRISBANE	(07)	3222 6351
PERTH	(08)	9360 5140
ADELAIDE	(08)	8237 7100
CANBERRA	(06)	252 6627
HOBART	(03)	6222 5800
DARWIN	(08)	8943 2111

Bookshop Sales

(02)	9268 4620
(03)	9615 7755
(07)	3222 6350
(08)	9360 5307
(08)	8237 7582
(06)	207 0326
(03)	6222 5800
(08)	8943 2111



Client Services, ABS, PO Box 10, Belconnen ACT 2616

Produced by the Australian Government Publishing Service
© Commonwealth of Australia 1997

Recommended retail price: \$19.50



2711310007952
ISSN 1320-8675