

FINAL ISSUE

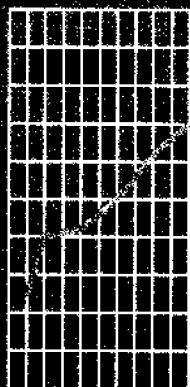
1996-97

EMBARGO: 11:30 AM (CANBERRA TIME) FRI 31 OCT 1997

Principal Agricultural Commodities

Western Australia

Preliminary



NOTES

SYMBOLS AND OTHER USAGES

ABS	Australian Bureau of Statistics
EVAO	estimated value of agricultural operations
ha	hectares
n.c.	not collected
n.y.a.	not yet available
p	preliminary
r	figure or series revised since previous issue
RSE	relative standard error
t	tonnes
—	nil or rounded to zero

REVISIONS TO FIGURES

State totals in this publication may differ from those in the recently released national publication *Selected Agricultural Commodities, Australia, Preliminary, 1996-97* (Cat. no. 7112.0). Differences in the totals are due to updated processing.

INQUIRIES

For further information about statistics in this publication and the availability of related unpublished statistics, contact Peter Hodgson on (08) 9360 5180 or any ABS State office.

For information about other ABS statistics and services, please refer to the back of this publication.

M. A. Konrath
Acting Regional Director

CONTENTS

Page

EDITORIAL

Summary of findings	4
---------------------------	---

TABLES

1	Cereals for grain, year ended 31 March 1997p	6
2	Legumes for grain, year ended 31 March 1997p	7
3	Canola, year ended 31 March 1997p	8
4	Sugar cane, year ended 31 March 1997p	8
5	Citrus and pome fruit, year ended 31 March 1997p	9
6	Stone and other fruit, year ended 31 March 1997p	10
7	Vegetables for human consumption, years ended 31 March	11
8	Mcat cattle numbers, at 31 March 1997p	12
9	Milk cattle numbers, at 31 March 1997p	12
10	Sheep and lamb numbers, at 31 March 1997p	13
11	Lambing, years ended 31 March	13
12	Pig numbers, at 31 March 1997p	14

ADDITIONAL INFORMATION

Explanatory notes	15
-------------------------	----

MAP

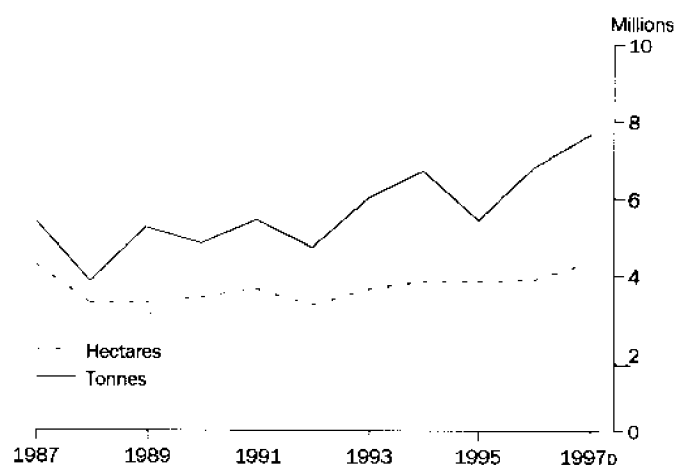
Statistical Divisions of Western Australia	16
--	----

SUMMARY OF FINDINGS

CROPS

The area sown to wheat for grain in 1996–97 was 4.4 million hectares, 12.5% more than in 1995–96. Production was 7.7 million tonnes, also 12.5% more than in 1995–96. The Midlands Statistical Division (SD) accounted for 49.6% of area sown and 49.3% of production. The other main wheat production regions were Upper Great Southern SD with 19.3% and Central SD with 18.2% (see table 1).

Wheat for grain



In 1996–97, the area sown to barley for grain increased 21.9% on 1995–96, to 907,500 hectares. Production increased 23.2% to 1.6 million tonnes. The major contributors to production were Lower Great Southern SD with 30.8% and South Eastern SD with 25.9% (see table 1).

HORTICULTURE

There was an increase in orange production in 1996–97, the harvest of 5,800 tonnes being 8.0% more than in 1995–96. The principal region for oranges was Midlands SD, which accounted for 51.9% of production (see table 5).

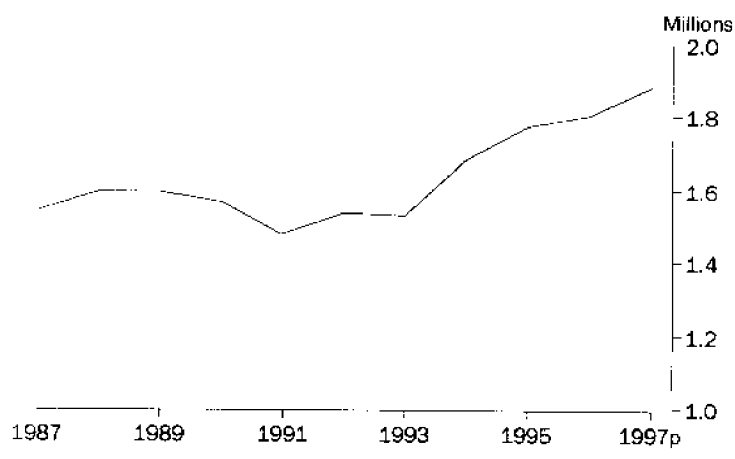
The number of apple trees six years and over at 31 March 1997 was 654,400, an increase of 18.9% from 31 March 1996. The major apple growing area was South West SD, which accounted for 81.8% of the State's trees six years and over (see table 5).

SUMMARY OF FINDINGS *continued*

LIVESTOCK

At 31 March 1997, the meat cattle herd numbered 1.9 million, 4.7% above the 31 March 1996 figure. The Kimberley SD accounted for 29.2% of the total meat cattle herd and the South West SD accounted for 20.5% (see table 8).

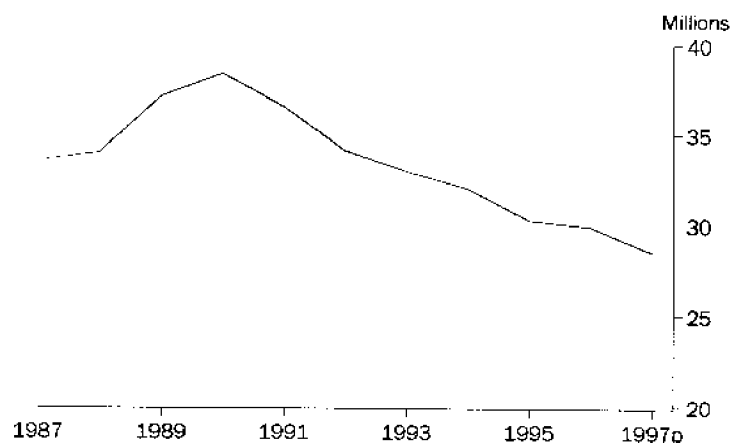
Meat Cattle numbers



The milk cattle herd increased to 128,200 at 31 March 1997, a rise of 6.0% on the 1995-96 figure. The major SD, in terms of numbers, was South West which accounted for 89.1% of the total milk cattle herd (see table 9).

Sheep and lamb numbers decreased 4.5% to 28.5 million at 31 March 1997. The major SDs, in terms of numbers, were Midlands, Lower Great Southern and Upper Great Southern which together accounted for 70.2% of the State's flock (see table 10). The number of lambs marked decreased 3.9% to 9.4 million (see table 11).

Sheep and lamb numbers



	BARLEY.....		GRAIN SORGHUM		OATS	
	Area	Production	Area	Production	Area	Production
Statistical division	'000 ha	'000 t	'000 ha	'000 t	'000 ha	'000 t
Perth	0.1	0.2	—	n.y.a.	0.3	0.6
South West	10.5	21.4	—	n.y.a.	14.0	30.3
Lower Great Southern	262.1	502.5	0.4	n.y.a.	82.2	161.4
Upper Great Southern	196.4	332.4	0.1	n.y.a.	133.4	230.5
Midlands	152.0	256.1	0.1	n.y.a.	73.9	106.4
South Eastern	226.5	422.5	—	n.y.a.	12.5	19.3
Central	60.0	94.1	—	n.y.a.	16.5	19.4
Pilbara	—	—	—	n.y.a.	—	—
Kimberley	—	—	1.0	n.y.a.	—	—
Western Australia						
1997p	907.5	1 629.3	1.6	n.y.a.	332.5	568.0
1996	744.5	1 322.8	0.4	0.8	300.4	584.8
1995	579.1	914.9	0.5	1.5	256.5	424.8

	TRITICALE.....		WHEAT.....	
	Area	Production	Area	Production
Statistical division	'000 ha	'000 t	'000 ha	'000 t
Perth	—	—	—	—
South West	0.1	0.1	1.8	2.6
Lower Great Southern	7.1	12.7	296.3	609.3
Upper Great Southern	1.8	2.8	832.3	1 482.5
Midlands	13.6	16.5	2 173.2	3 782.3
South Eastern	2.6	4.5	260.9	400.9
Central	1.3	1.6	816.2	1 400.7
Pilbara	—	—	—	—
Kimberley	—	—	—	—
Western Australia				
1997p	26.4	38.3	4 380.7	7 678.4
1996	16.9	20.4	3 892.4	6 826.7
1995	13.6	12.0	3 848.3	5 437.9

CHICK PEAS

FABA BEANS

FIELD PEAS

	Area	Production	Area	Production	Area	Production
<i>Statistical division</i>	'000 ha	'000 t	'000 ha	'000 t	'000 ha	'000 t
Perth	—	—	—	—	—	—
South West	—	—	—	—	—	—
Lower Great Southern	1.3	1.2	2.8	1.8	0.9	1.1
Upper Great Southern	6.1	3.4	3.2	3.4	5.8	5.7
Midlands	20.9	13.8	13.0	11.9	17.0	16.1
South Eastern	0.4	0.3	2.2	2.6	2.5	3.0
Central	15.2	13.6	1.4	1.8	1.2	0.9
Pilbara	—	—	—	—	—	—
Kimberley	0.9	1.5	—	—	—	—
Western Australia						
1997p	44.9	33.8	22.6	21.5	27.3	26.8
1996	31.4	26.3	19.2	20.2	37.6	33.7
1995	13.4	8.1	23.5	12.0	42.7	24.2

LUPINS

	Area	Production
<i>Statistical division</i>	'000 ha	'000 t
Perth	—	—
South West	2.3	3.2
Lower Great Southern	70.6	75.1
Upper Great Southern	145.8	152.4
Midlands	502.1	562.3
South Eastern	31.9	44.0
Central	344.4	470.3
Pilbara	—	—
Kimberley	—	—
Western Australia		
1997p	1 097.1	1 307.2
1996	1 100.3	1 290.0
1995	1 152.1	982.2

3

CANOLA—Year ended 31 March 1997p

CANOLA

	Area	Production
Statistical division	'000 ha	'000 t
Perth	0.2	0.3
South West	2.9	3.4
Lower Great Southern	47.8	48.3
Upper Great Southern	25.0	22.8
Midlands	12.2	12.6
South Eastern	14.4	15.0
Central	3.2	3.3
Pilbara	—	—
Kimberley	—	—
Western Australia		
1997p	105.8	105.7
1996	99.4	116.9
1995	104.1	107.9

4

SUGAR CANE—Year ended 31 March 1997p

SUGAR CANE

	Area	Production
Statistical division	'000 ha	'000 t
Perth	—	—
South West	—	—
Lower Great Southern	—	—
Upper Great Southern	—	—
Midlands	—	—
South Eastern	—	—
Central	—	—
Pilbara	—	—
Kimberley	1.0	172.9
Western Australia		
1997p	1.0	172.9
1996	0.6	69.2
1995	n.c.	n.c.

LEMONS AND LIMES

MANDARINS

ORANGES

Statistical division	Trees 6 years and over	Production	Trees 6 years and over	Production	Trees 6 years and over	Production
	'000	t		t		t
Perth	11.6	712.2	26.7	486.8	23.0	948.4
South West	0.5	9.1	13.2	402.4	38.6	1 820.8
Lower Great Southern	—	0.5	—	1.1	0.1	2.9
Upper Great Southern	—	—	—	0.6	—	2.8
Midlands	1.6	96.8	17.6	586.4	103.9	3 021.5
South Eastern	—	—	—	—	1.1	27.7
Central	—	0.8	0.3	5.0	—	—
Pilbara	—	—	—	—	—	—
Kimberley	—	0.9	—	—	—	—
Western Australia						
1997p	13.8	820.2	57.8	1 482.3	166.7	5 824.1
1996	15.1	880.9	54.4	1 523.5	182.4	5 394.6
1995	14.6	960.2	52.9	1 584.6	159.7	5 165.8

APPLES

NASHI

PEARS (EXCLUDING NASHI)

Statistical division	Trees 6 years and over	Production	Trees 6 years and over	Production	Trees 6 years and over	Production
	'000	t		t		t
Perth	109.1	n.y.a.	1.0	n.y.a.	37.4	n.y.a.
South West	535.3	n.y.a.	27.2	n.y.a.	72.1	n.y.a.
Lower Great Southern	10.0	n.y.a.	—	n.y.a.	0.5	n.y.a.
Upper Great Southern	—	n.y.a.	—	n.y.a.	—	n.y.a.
Midlands	—	n.y.a.	—	n.y.a.	—	n.y.a.
South Eastern	—	n.y.a.	—	n.y.a.	—	n.y.a.
Central	—	n.y.a.	—	n.y.a.	—	n.y.a.
Pilbara	—	n.y.a.	—	n.y.a.	—	n.y.a.
Kimberley	—	n.y.a.	—	n.y.a.	—	n.y.a.
Western Australia						
1997p	654.4	n.y.a.	28.2	n.y.a.	109.9	n.y.a.
1996	550.3	38 200.3	24.2	350.6	115.4	9 726.5
1995	482.3	29 897.7	16.4	281.8	111.4	8 613.8

APRICOTS			NECTARINES			PEACHES		
Statistical division	<i>Trees 6 years and over</i>	<i>Production</i>	<i>Trees 6 years and over</i>	<i>Production</i>	<i>Trees 6 years and over</i>	<i>Production</i>		
	'000	t	'000	t	'000	t		
Perth	6.4	220.4	33.6	913.6	45.8	1 299.9		
South West	5.1	110.9	61.8	1 736.4	22.7	592.1		
Lower Great Southern	0.2	2.1	0.3	3.3	0.6	4.5		
Upper Great Southern	—	0.8	—	1.9	—	0.8		
Midlands	1.8	27.8	5.8	345.4	6.2	213.3		
South Eastern	—	0.6	—	—	—	—		
Central	—	—	0.1	29.7	0.3	66.0		
Pilbara	—	—	—	—	—	—		
Kimberley	—	—	—	—	—	—		
Western Australia								
1997p	13.5	362.6	101.7	3 030.4	75.6	2 176.4		
1996	12.4	381.5	88.7	2 586.3	75.6	2 042.8		
1995	13.4	416.7	84.1	2 199.9	70.7	1 888.8		

PLUMS AND PRUNES			BANANAS			STRAWBERRIES		
Statistical division	<i>Trees 6 years and over</i>	<i>Production</i>	<i>Area of bearing age</i>	<i>Production</i>	<i>Area of bearing age</i>	<i>Production</i>		
	'000	t	ha	t	ha	t		
Perth	76.4	2 320.7	—	—	78.0	1 965.3		
South West	65.1	1 574.7	—	—	1.7	48.8		
Lower Great Southern	0.3	2.4	—	—	21.5	563.2		
Upper Great Southern	—	1.3	—	—	—	—		
Midlands	0.6	14.2	—	—	—	—		
South Eastern	—	—	—	—	—	—		
Central	—	5.0	263.1	8 507.1	—	—		
Pilbara	—	—	—	—	—	—		
Kimberley	—	—	192.3	4 722.8	—	—		
Western Australia								
1997p	142.3	3 918.3	455.4	13 230.0	101.3	2 577.3		
1996	142.2	3 485.6	380.9	11 987.4	97.3	2 648.8		
1995	129.5	3 285.0	396.0	13 012.3	100.2	2 070.3		

	Units	1995	1996	1997p
Beans — French and runner				
area	ha	212.9	190.1	237.6
production	t	1 269.3	1 168.4	728.7
Broccoli				
area	ha	286.0	321.5	247.0
production	t	2 713.1	3 320.3	1 819.5
Cabbages				
area	ha	158.2	178.9	145.0
production	t	7 450.6	6 843.3	6 078.0
Carrots				
area	ha	836.0	1 003.5	1 479.1
production	t	44 672.7	45 369.0	58 562.1
Cauliflower				
area	ha	1 020.5	1 191.5	1 156.2
production	t	15 676.2	19 199.7	17 259.2
Green peas (pod weight)(a)				
area	ha	667.0	632.6	801.0
production	t	1 749.8	3 402.9	2 877.1
Lettuces				
area	ha	434.1	376.6	241.2
production	t	13 545.4	12 035.1	7 650.2
Melons — rock and cantaloupe				
area	ha	526.7	597.3	466.0
production	t	8 294.1	7 10 322.1	7 304.0
Melons — water				
area	ha	638.9	600.8	943.0
production	t	15 674.2	16 328.6	25 439.0
Mushrooms				
area	ha	10.2	5.1	6.0
production	t	1 284.7	972.0	1 422.2
Onions — white and brown				
area	ha	398.0	477.6	370.0
production	t	22 691.1	27 191.0	20 199.0
Potatoes				
area	ha	2 553.0	2 836.0	2 637.5
production	t	103 572.5	121 546.1	n.y.a.
Pumpkins				
area	ha	511.6	668.2	855.0
production	t	9 152.2	12 507.1	17 512.0
Tomatoes				
area	ha	192.7	198.1	226.0
production	t	7 693.6	8 968.7	9 680.0

(a) Production figure for 1995 is not comparable to 1996 and 1997 data due to changes in question asked.

8

MEAT CATTLE NUMBERS—At 31 March 1997p

<i>Statistical division</i>	<i>Bulls and bull calves intended for service</i>	<i>Cows and heifers one year and over</i>	<i>Heifers and other calves under one year</i>	<i>Other cattle one year and over</i>	<i>Total meat cattle</i>	<i>Percentage of total meat cattle herd</i>
	'000	'000	'000	'000	'000	%
Perth	0.5	11.2	6.4	4.6	22.7	1.2
South West	7.5	173.8	111.8	93.2	386.3	20.5
Lower Great Southern	5.8	127.9	68.8	31.4	233.9	12.4
Upper Great Southern	1.1	23.5	11.9	6.0	42.5	2.3
Midlands	4.0	84.5	45.0	23.9	157.4	8.3
South Eastern	3.8	77.5	47.2	9.5	138.0	7.3
Central	3.7	94.4	52.3	30.5	180.9	9.6
Pilbara	4.4	89.4	44.5	36.3	174.6	9.2
Kimberley	16.5	294.6	129.4	110.9	551.4	29.2
Western Australia						
1997p	47.4	976.7	517.4	346.3	1 987.7	100.0
1996	47.2	934.4	446.9	374.3	1 802.8	100.0
1995	46.8	945.9	434.1	346.2	1 773.1	100.0

9

MILK CATTLE NUMBERS—At 31 March 1997p

<i>Statistical division</i>	<i>Cows in milk and dry</i>	<i>Other milk cattle</i>	<i>Total milk cattle(a)</i>	<i>Percentage of total milk cattle herd</i>
	'000	'000	'000	%
Perth	3.4	1.7	5.1	4.0
South West	66.0	48.2	114.2	89.1
Lower Great Southern	5.3	3.5	8.8	6.9
Upper Great Southern	—	—	0.1	0.1
Midlands	—	—	—	—
South Eastern	—	—	—	—
Central	—	—	—	—
Pilbara	—	—	—	—
Kimberley	—	—	—	—
Western Australia				
1997p	74.8	53.4	128.2	100.0
1996	70.9	49.9	120.9	100.0
1995	73.2	52.8	126.0	100.0

(a) Excludes house cows.

10

SHEEP AND LAMB NUMBERS—At 31 March 1997p

<i>Statistical division</i>	<i>Breeding ewes one year and over</i>	<i>Lambs and hoggets under one year</i>	<i>All other sheep</i>	<i>Total sheep and lambs</i>	<i>Percentage of total sheep flock</i>
	'000	'000	'000	'000	%
Perth	18.5	15.9	23.9	58.3	0.2
South West	685.4	299.6	445.9	1 430.9	5.0
Lower Great Southern	3 221.7	1 544.2	1 846.8	6 612.7	23.2
Upper Great Southern	3 131.8	1 758.2	1 711.5	6 601.5	23.2
Midlands	3 473.7	1 832.6	1 476.8	6 783.1	23.8
South Eastern	1 417.0	839.2	569.6	2 825.8	9.9
Central	2 002.4	1 030.4	967.6	4 000.4	14.0
Pilbara	95.5	39.3	51.2	186.0	0.7
Kimberley	--	--	--	--	--
Western Australia					
1997p	14 045.8	7 359.6	7 093.3	28 498.7	100.0
1996	14 184.2	7 756.6	7 913.2	29 834.0	100.0
1995	n.c.	6 864.4	n.c.	30 217.9	100.0

11

LAMBING—Years ended 31 March

<i>Statistical division</i>	<i>Ewes mated(a)</i>	<i>Lambs marked</i>	<i>Lamb marking ratio(b)</i>	<i>Joined to merino rams</i>	<i>Joined to short wool rams</i>	<i>Joined to other rams</i>	<i>Total</i>
	'000	'000	%	'000	'000	'000	'000
Perth	17.9	12.9	71.9	5.2	6.4	4.4	16.0
South West	644.6	433.6	67.3	402.6	206.1	75.7	684.4
Lower Great Southern	2 920.6	1 923.8	65.9	2 269.2	516.8	300.6	3 086.6
Upper Great Southern	2 989.5	2 156.5	72.1	2 533.3	369.8	119.4	3 022.5
Midlands	3 225.6	2 530.9	78.5	2 445.5	595.7	259.3	3 300.5
South Eastern	1 330.6	1 017.3	76.5	1 202.6	95.0	83.8	1 381.4
Central	1 789.8	1 311.3	73.3	1 600.5	126.7	80.5	1 807.7
Pilbara	83.4	37.2	44.7	77.4	--	1.3	78.7
Kimberley	--	--	--	--	--	--	--
Western Australia							
1997p	13 002.1	9 423.5	72.5	10 536.2	1 916.5	925.0	13 377.7
1996	13 107.0	9 801.0	74.8	10 889.7	n.c.	n.c.	13 310.6
1995	12 925.9	9 080.1	70.2	11 313.0	n.c.	n.c.	13 459.0

(a) Ewes mated to produce lambs marked in the season shown.

(b) Lambs marked as a proportion of ewes mated to produce lambs.

(c) Forecast made at the end of 1996-97.

<i>Statistical division</i>	<i>Total pigs</i> '000	<i>Percentage of total pigs</i> %
Perth	19.4	6.4
South West	43.8	14.4
Lower Great Southern	52.7	17.4
Upper Great Southern	65.5	21.6
Midlands	107.3	35.3
South Eastern	5.4	1.8
Central	9.5	3.1
Pilbara	—	—
Kimberley	—	—
Western Australia		
1997p	303.6	100.0
1996	313.6	100.0
1995	316.4	100.0

EXPLANATORY NOTES

INTRODUCTION

1 This publication contains preliminary agricultural estimates for 1996–97 and comparative data for earlier years. Final figures for 1996–97 will be published early in 1998 when all agricultural census returns have been fully processed.

SCOPE AND COVERAGE

2 Estimates are based on information obtained from a substantial proportion of farms in Western Australia, from the agricultural census conducted throughout Australia for the year ended 31 March 1997.

3 Establishments which make only a small contribution to overall agricultural production are excluded from the scope of the census. Information is collected from establishments when their estimated value of agricultural operations (EVAO) is above a certain level. These levels have varied in past agricultural censuses, as follows:

- | | |
|----------------------|-----------------------------|
| ■ 1993–94 to present | EVAO \$5,000 and over; |
| ■ 1991–92 to 1992–93 | EVAO \$22,500 and over; |
| ■ 1986–87 to 1990–91 | EVAO \$20,000 and over; and |
| ■ before 1986–87 | EVAO \$2,500 and over. |

RELIABILITY OF ESTIMATES

4 Preliminary estimates are based on forms received and processed at the point of estimation (approximately 75%) and are subject to sampling error.

5 Sampling error is the variation occurring because information has not been collected from all the relevant units. This is often described in terms of relative standard error (RSE) which makes certain assumptions about the distribution of the units used in estimation. In particular, these units are assumed to have been drawn from the population randomly and are therefore representative of those units for which there is no information (late returns). If there is a bias associated with these units (e.g. units faring poorly may reply later and thus may not be included in preliminary estimates), this assumption is no longer valid. However, the RSE measures should still be regarded as a good guide to the reliability of the estimates, and are available on request.

RELATED PUBLICATIONS

6 Users may also wish to refer to the following priced publications which are available on request:

Agricultural Industries, Financial Statistics, Australia (Cat. no. 7507.0)

Value of Agricultural Commodities Produced, Australia (Cat. no. 7503.0)

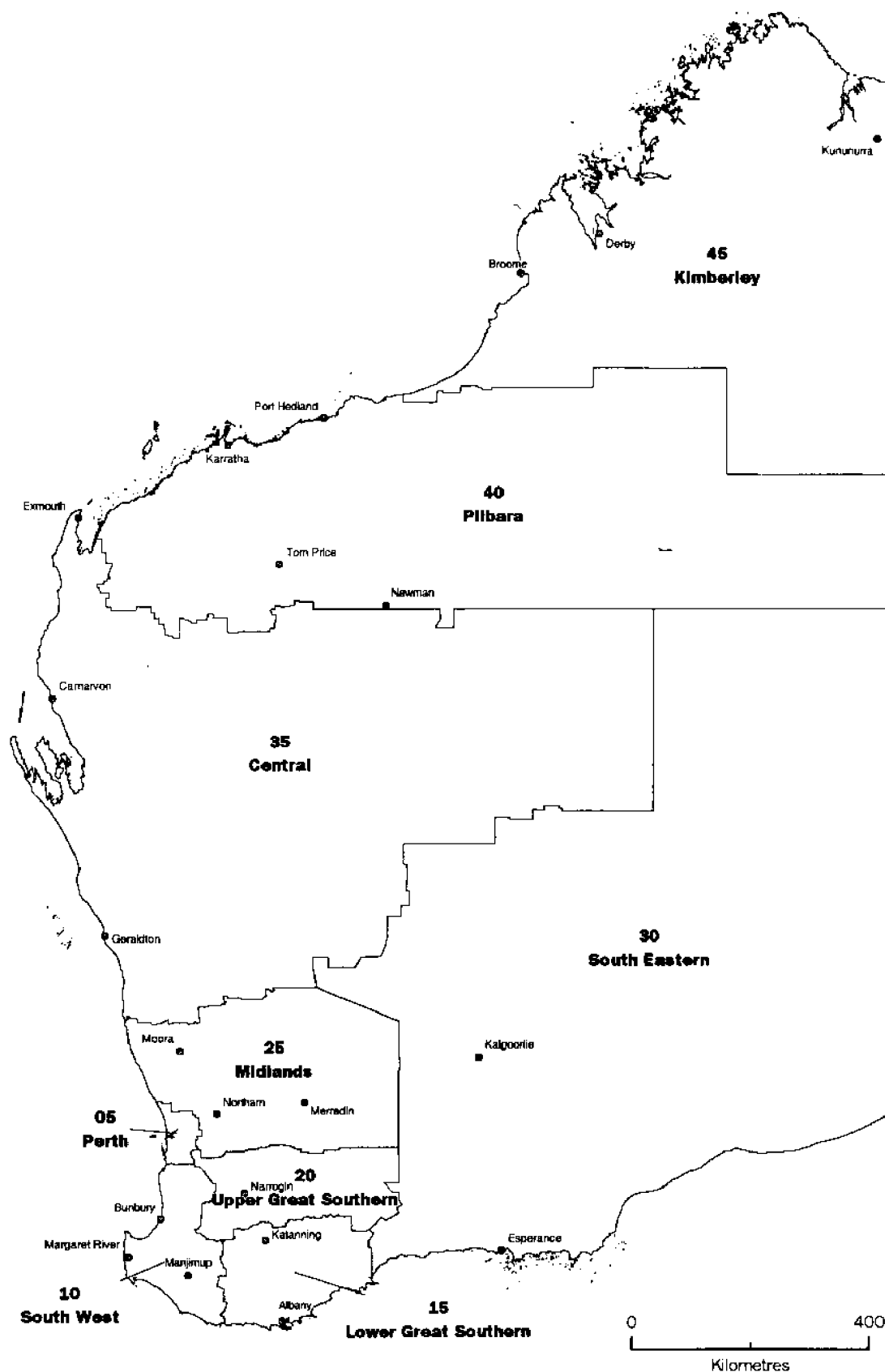
OTHER FORMS OF RELEASE

7 The ABS has more detailed agricultural statistics on floppy disk. AgStats on floppy disk offers a wide range of data aggregated at smaller geographic areas than those available in printed publications, together with an easy-to-use interrogation facility. A smaller range of commodities is available on the CD-ROM product, the Integrated Regional Data Base (IRDB).

8 Current publications produced by the ABS are listed in the Catalogue of Publications and Products, Australia (1101.0). The ABS also issues, on Tuesdays and Fridays, a Release Advice (1105.0) which lists publications to be released in the following few days. The Catalogue and Release Advice are available from any ABS office.

9 Where the figures have been rounded, discrepancies may occur between the sums of the component items and totals.

STATISTICAL DIVISIONS OF WESTERN AUSTRALIA *from 1 July 1996*



For more information . . .

The ABS publishes a wide range of statistics and other information on Australia's economic and social conditions. Details of what is available in various publications and other products can be found in the ABS Catalogue of Publications and Products available from all ABS Offices.

ABS Products and Services

Many standard products are available from ABS bookshops located in each State and Territory. In addition to these products, information tailored to the needs of clients can be obtained on a wide range of media by contacting your nearest ABS Office. The ABS also provides a Subscription Service for standard products and some tailored information services.

National Dial-a-Statistic Line

0055 86 400

Steadycorn P/L: premium rate 25c/20 secs.

This number gives 24-hour access, 365 days a year, for a range of important economic statistics including the CPI.

Internet

<http://www.abs.gov.au>

A wide range of ABS information is available via the Internet, with basic statistics available for each State, Territory and Australia. We also have Key National Indicators, ABS product release details and other information of general interest.

Sales and Inquiries

client.services@abs.gov.au

National Mail Order Service	(02) 6252 5249
Subscription Service	1300 366 323

	Information Inquiries	Bookshop Sales
CANBERRA	(02) 6252 6627	(02) 6207 0326
SYDNEY	(02) 9268 4611	(02) 9268 4620
MELBOURNE	(03) 9615 7755	(03) 9615 7755
BRISBANE	(07) 3222 6351	(07) 3222 6350
PERTH	(08) 9360 5140	(08) 9360 5307
ADELAIDE	(08) 8237 7100	(08) 8237 7582
HOBART	(03) 6222 5800	(03) 6222 5800
DARWIN	(08) 8943 2111	(08) 8943 2111



Client Services, ABS, PO Box 10, Belconnen ACT 2616

