

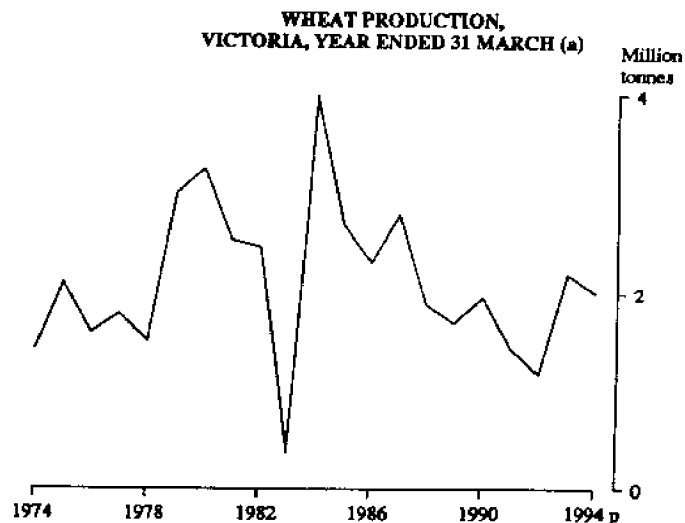
PRINCIPAL AGRICULTURAL COMMODITIES PRELIMINARY, VICTORIA, 1993-94

This is the first publication to provide output for Victoria from the 1993-94 Agricultural Census. Users are advised that the figures contained in this publication are preliminary and subject to revision as further data become available. Detailed data will be released progressively over the next 12 months in the series of publications listed on the back page.

SUMMARY OF FINDINGS

Preliminary results from the 1993-94 Agricultural Census, compared with the previous year, indicate:

- Wheat** ■ Production has remained virtually unchanged at 2,100,000 tonnes, while the area sown decreased 3.8 per cent from 821,200 hectares to 789,900 hectares (Table 1).
- Barley** ■ Production increased 28.1 per cent from 1,116,300 tonnes to 1,429,800 tonnes, with the area sown increasing 14.0 per cent from 551,500 hectares to 628,500 hectares (Table 1).
- Oats** ■ Production decreased 12.0 per cent from 403,900 tonnes to 355,600 tonnes, while the area sown decreased 19.6 per cent from 222,900 hectares to 179,300 hectares (Table 1).
- Legumes** ■ Field peas production rose by 22.3 per cent from 246,300 tonnes to 301,200 tonnes, with the area sown increasing 15.6 per cent from 174,300 hectares to 201,500 hectares. Lupin production decreased by 21.2 per cent and the area sown increased by 4.7 per cent (Table 1).
- Cereal Outlook for 1994-95** ■ The area intended to be sown to wheat rose by 6.8 per cent and the area intended to be sown to barley and oats fell by 28.5 and 24.2 per cent respectively (Table 2).



(a) Changes in scope, see Explanatory Notes, paragraph 4

INQUIRIES

- for further information about the statistics in this publication and the availability of related unpublished statistics, contact Winton McColl on Melbourne (03) 615 7000; or any ABS State office.
- for information about other ABS statistics and services please refer to the back page of this Publication.

Cattle

■ The total number of cattle and calves increased by 3.5 per cent from 3,689,200 to 3,819,300. The number of milk cattle rose 3.5 per cent from 1,462,900 to 1,513,800, and the number of meat cattle increased by 3.6 per cent, from 2,225,900 to 2,305,400 (Table 5).

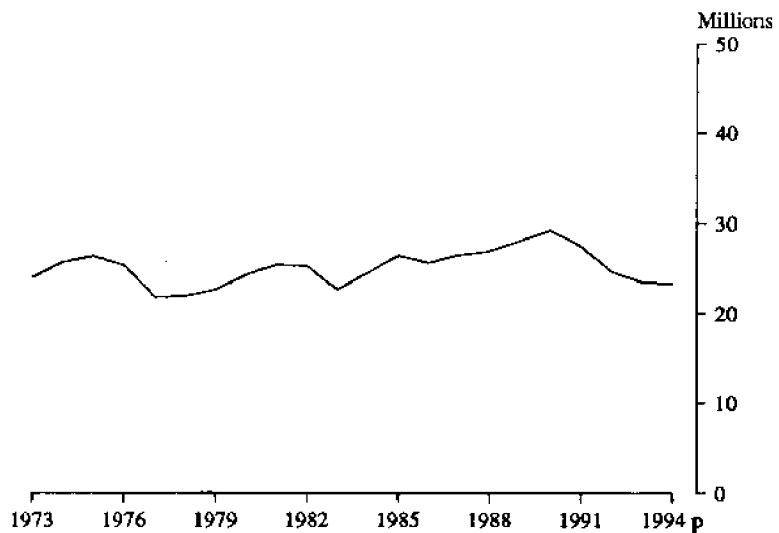
Sheep

■ The total number of sheep and lambs decreased by 0.7 per cent from 23,554,800 to 23,381,900 (Table 5).

■ The number of ewes mated and the number of lambs marked decreased by 0.6 and 0.4 per cent respectively (Table 6).

■ Intended matings recorded a rise of 1.8 per cent, from 9,717,300 to 9,894,900. Ewes intended to be mated to Merino rams decreased by 2.3 per cent while the number of ewes intended to be mated to other rams rose by 6.4 per cent (Table 8).

**SHEEP NUMBERS,
VICTORIA, AT 31 MARCH (a)**



(a) Changes in scope, see Explanatory Notes, paragraph 4

Wool

■ Wool clipped decreased by 7.4 per cent from 117,528 tonnes to 108,803 tonnes. The average clip per sheep decreased from 4.4 kgs to 4.2 kgs (Table 6).

Pigs

■ Pig numbers rose marginally by 0.6 per cent from 424,500 to 427,200 (Table 5).

AGSTATS

Agstats is a microcomputer package containing the Australian Bureau of Statistics set of Agricultural Census small area commodity data and a program to interrogate these data. Over 1300 individual Statistical Local Areas, covering all of Australia, can be cross referenced with any or all of more than 800 commodity data items.

Contact for enquiries: *Gordon Hewat*, phone (03) 615 7469.

**TABLE 1. AREA AND PRODUCTION OF PRINCIPAL CROPS FOR GRAIN,
VICTORIA, YEAR ENDED 31 MARCH 1992 TO 1994p**

Item		1992	1993	1994p	% change 1994p on 1993
Wheat - Area	'000 ha	664.1	821.2	789.9	-3.8
- Production	'000 tonnes	1,150.4	2,015.2	2,011.4	-0.2
Barley - Area	'000 ha	533.9	551.5	628.5	14.0
- Production	'000 tonnes	897.9	1,116.3	1,429.8	28.1
Oats - Area	'000 ha	182.8	222.9	179.3	-19.6
- Production	'000 tonnes	300.4	403.9	355.6	-12.0
Field peas - Area	'000 ha	193.6	174.3	201.5	15.6
- Production	'000 tonnes	211.7	246.3	301.2	22.3
Lupins - Area	'000 ha	36.7	52.6	55.0	4.7
- Production	'000 tonnes	40.5	82.5	65.0	-21.2

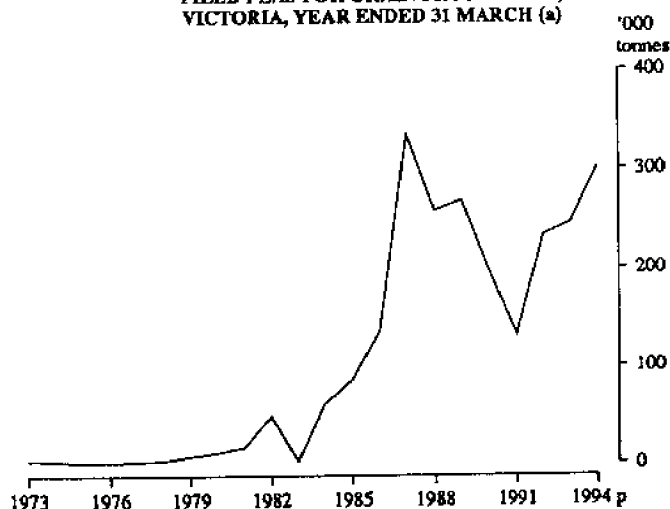
**BARLEY PRODUCTION,
VICTORIA, YEAR ENDED 31 MARCH (a)**



**OAT PRODUCTION,
VICTORIA, YEAR ENDED 31 MARCH (a)**



**FIELD PEAS FOR GRAIN PRODUCTION,
VICTORIA, YEAR ENDED 31 MARCH (a)**



**LUPINS FOR GRAIN PRODUCTION,
VICTORIA, YEAR ENDED 31 MARCH (a)**



**TABLE 2. INTENDED PLANTINGS OF SELECTED CEREALS FOR ALL PURPOSES, VICTORIA,
AS REPORTED AT 31 MARCH, FOR YEARS ENDED 31 MARCH 1993 TO 1995p**
(*'000 hectares*)

<i>Item</i>	<i>1993</i>	<i>1994</i>	<i>1995p</i>	<i>% change 1995p on 1994</i>
Wheat	795.3	777.6	830.4	6.8
Barley	549.2	620.8	443.9	-28.5
Oats	301.0	233.5	177.1	-24.2

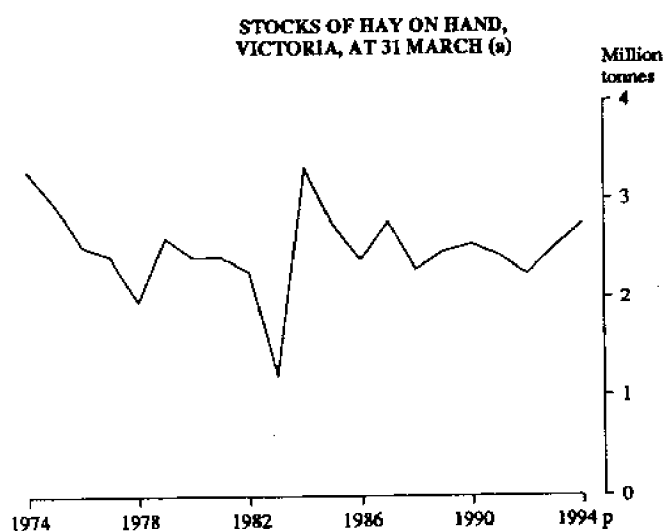
**TABLE 3. AREA AND PRODUCTION OF CEREAL CROPS FOR GRAIN AND OTHER
SELECTED CROPS, YEAR ENDED 31 MARCH 1994**

<i>Statistical division</i>	<i>Cereal crops for grain</i>					
	<i>Wheat</i>		<i>Barley</i>		<i>Oats</i>	
	<i>Area (<i>'000 ha</i>)</i>	<i>Production (<i>'000 tonnes</i>)</i>	<i>Area (<i>'000 ha</i>)</i>	<i>Production (<i>'000 tonnes</i>)</i>	<i>Area (<i>'000 ha</i>)</i>	<i>Production (<i>'000 tonnes</i>)</i>
Melbourne	0.1	0.3	3.5	8.9	0.1	0.5
Barwon	2.6	5.2	13.5	28.0	3.9	8.5
Western District	5.5	8.3	5.5	10.5	14.8	32.4
Central Highlands	12.4	30.3	5.9	14.2	25.4	59.8
Wimmera	261.1	772.3	193.9	502.2	49.1	103.6
Mallee	381.8	912.2	349.6	749.8	27.7	45.8
Loddon-Campaspe	83.4	185.0	46.7	97.7	33.7	66.6
Goulburn	32.6	71.3	9.5	18.0	19.2	25.7
Ovens-Murray	9.8	25.2	0.3	0.4	5.4	12.8
East Gippsland	0.1	0.3	—	0.1	—	—
Gippsland	0.3	1.0	0.1	—	—	—
Total Victoria	789.9	2,011.4	628.5	1,429.8	179.3	355.6

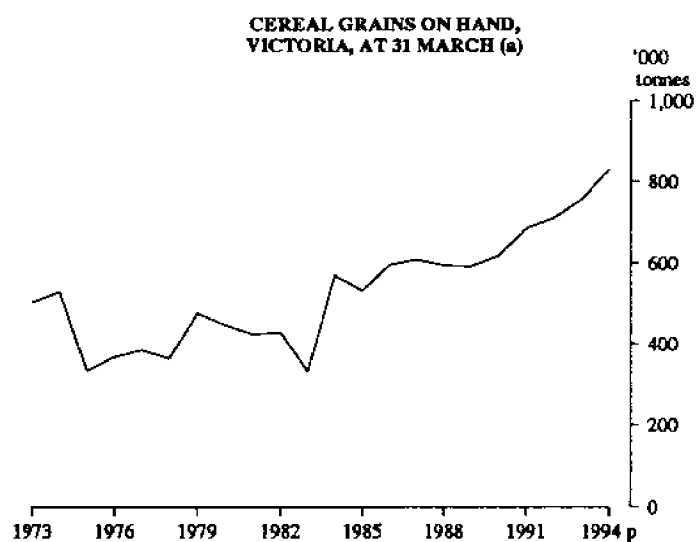
<i>Statistical division</i>	<i>Other selected crops</i>			
	<i>Field peas</i>		<i>Lupins for grain</i>	
	<i>Area (<i>'000 ha</i>)</i>	<i>Production (<i>'000 tonnes</i>)</i>	<i>Area (<i>'000 ha</i>)</i>	<i>Production (<i>'000 tonnes</i>)</i>
Melbourne	—	—	—	—
Barwon	0.5	0.4	0.9	1.7
Western District	—	—	0.6	0.9
Central Highlands	0.4	0.4	0.8	1.7
Wimmera	77.7	138.7	17.0	19.0
Mallee	109.0	140.5	8.5	9.1
Loddon-Campaspe	11.9	20.1	11.9	14.5
Goulburn	1.8	1.0	13.0	14.1
Ovens-Murray	0.2	—	2.2	3.7
East Gippsland	—	—	—	0.1
Gippsland	—	—	—	—
Total Victoria	201.5	301.2	55.0	65.0

TABLE 4. FARM STOCKS OF CEREAL GRAINS, HAY, AND SILAGE HELD AT 31 MARCH 1994p
(*000 tonnes)

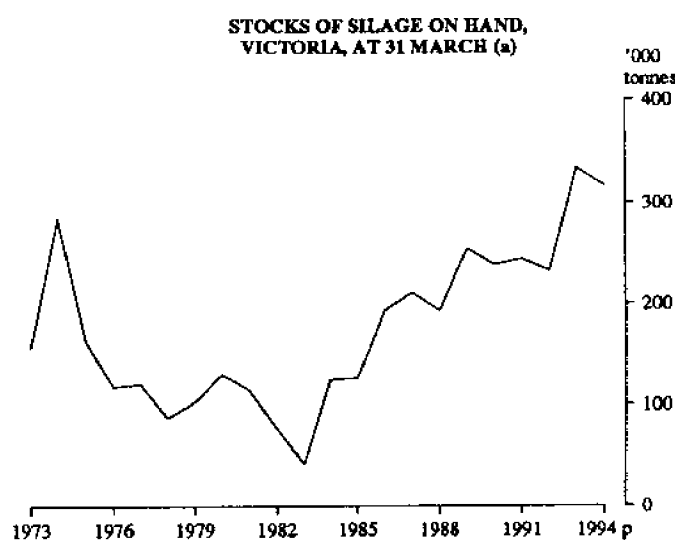
<i>Statistical division</i>	<i>Wheat</i>	<i>Barley</i>	<i>Oats</i>	<i>Hay</i>	<i>Silage</i>
Melbourne	0.1	3.2	0.7	80.6	16.2
Barwon	1.8	9.8	10.2	164.2	22.7
Western District	5.0	12.0	36.9	632.8	62.9
Central Highlands	9.6	8.0	49.9	208.4	8.5
Wimmera	80.2	80.8	63.7	167.0	15.7
Mallee	82.8	142.0	23.5	112.8	2.1
Loddon-Campaspe	24.5	30.8	41.2	297.7	11.5
Goulburn	24.1	9.8	28.3	452.4	28.8
Ovens-Murray	17.6	16.0	12.9	160.1	37.6
East Gippsland	0.7	0.7	0.4	94.6	17.6
Gippsland	1.1	2.4	0.7	380.2	92.9
Total Victoria	247.4	315.3	268.3	2,750.8	316.5



(a) Changes in Scope, see Explanatory Notes, paragraph 4



(a) Changes in scope, see Explanatory Notes, paragraph 4



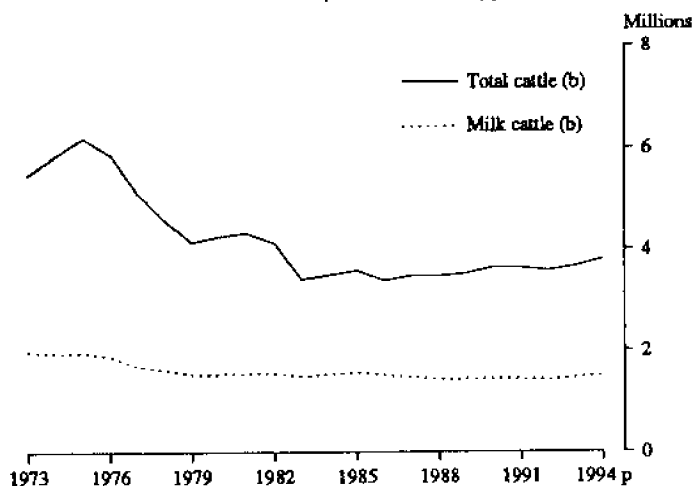
(a) Changes in scope, see Explanatory Notes, paragraph 4

TABLE 5. LIVESTOCK, VICTORIA, AT 31 MARCH 1992 TO 1994p
(*'000*)

<i>Item</i>	<i>1992</i>	<i>1993</i>	<i>1994p</i>	<i>% change 1994p on 1993</i>
MILK CATTLE -				
Bulls and bull calves used or intended for service	19.2	20.1	20.6	2.6
Cows - in milk and dry	991.4	1,018.8	1,042.3	2.3
Heifers and heifer calves	411.3	424.1	450.9	6.3
Total milk cattle (a)	1,421.9	1,462.9	1,513.8	3.5
MEAT CATTLE -				
Bulls and bull calves used or intended for service	60.2	61.9	62.3	0.6
Cows and heifers, 1 year and over	1,052.5	1,129.1	1,122.2	-0.6
Other calves, under 1 year	608.9	605.5	658.1	8.7
Other cattle, 1 year and over	430.6	429.4	462.8	7.8
Total meat cattle	2,152.2	2,225.9	2,305.4	3.6
Total cattle (a)	3,574.2	3,689.2	3,819.3	3.5
SHEEP AND LAMBS -				
Rams, 1 year and over	258.1	245.4	222.4	-9.4
Ewes - Breeding, 1 year and over	10,335.7	9,958.1	9,762.2	-2.0
- Other, 1 year and over	1,461.4	1,374.5	1,422.9	3.5
Wethers, 1 year and over	7,957.4	7,250.1	6,783.7	-6.4
Lambs and hoggets, under 1 year	4,769.3	4,726.7	5,190.8	9.8
Total sheep and lambs	24,781.9	23,554.8	23,381.9	-0.7
PIGS -				
Boars	3.4	3.2	2.8	-14.0
Breeding sows and gilts intended for breeding	53.0	51.6	52.4	1.7
Other	374.3	369.7	372.0	0.6
Total pigs	430.7	424.5	427.2	0.6

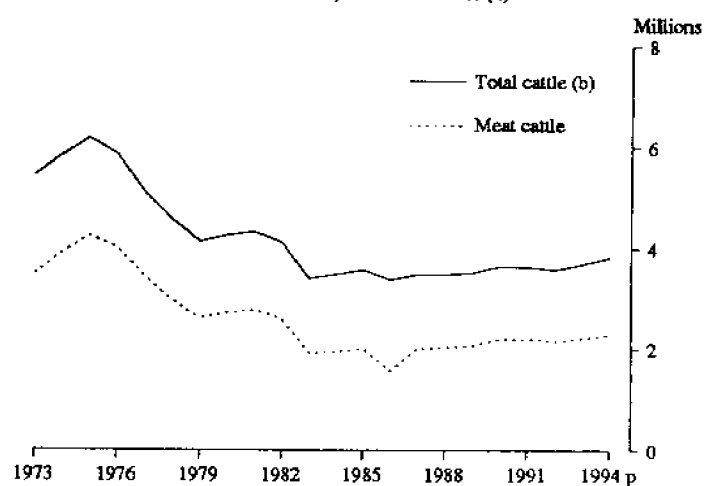
(a) Excludes house cows.

**MILK CATTLE NUMBERS,
VICTORIA, AT 31 MARCH (a)**



(a) Changes in scope, see Explanatory Notes, paragraph 4 (b) Excludes house cows

**MEAT CATTLE NUMBERS,
VICTORIA, AT 31 MARCH (a)**

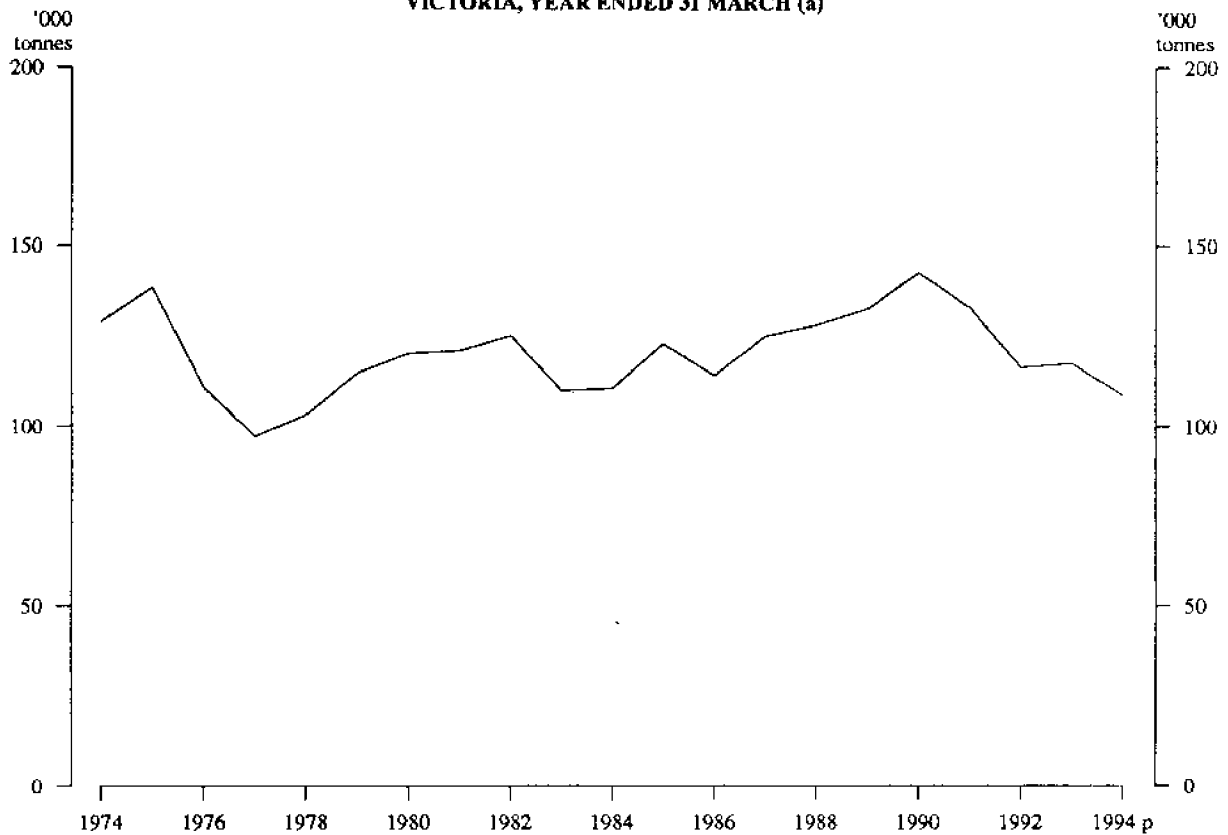


(a) Changes in scope, see Explanatory Notes, paragraph 4 (b) Excludes house cows

**TABLE 6. LAMBING, SHEARING AND WOOL PRODUCTION,
VICTORIA, YEAR ENDED 31 MARCH 1992 TO 1994p**

Item		1992	1993	1994p	% change 1994p on 1993
LAMBING —					
Lambs marked	'000	7,411.6	7,592.3	7,547.2	-0.6
Ewes mated	'000	9,465.9	9,352.3	9,314.6	-0.4
Lambing percentage	%	78.3	81.2	81.0	-0.2
SHEARING AND WOOL PRODUCTION -					
Sheep and lambs shorn	'000	28,129.2	26,511.3	26,117.1	-1.5
Wool produced (including crutchings)	'000 kg	116,573.9	117,527.9	108,802.6	-7.4
Average clip (greasy, including crutchings)	kg	4.14	4.43	4.17	-6.0

**WOOL CLIPPED, INCLUDING CRUTCHINGS,
VICTORIA, YEAR ENDED 31 MARCH (a)**



(a) Changes in scope, see Explanatory Notes, paragraph 4

TABLE 7. LAMBING NUMBERS FOR THE YEAR ENDED 31 MARCH 1994p
(*'000*)

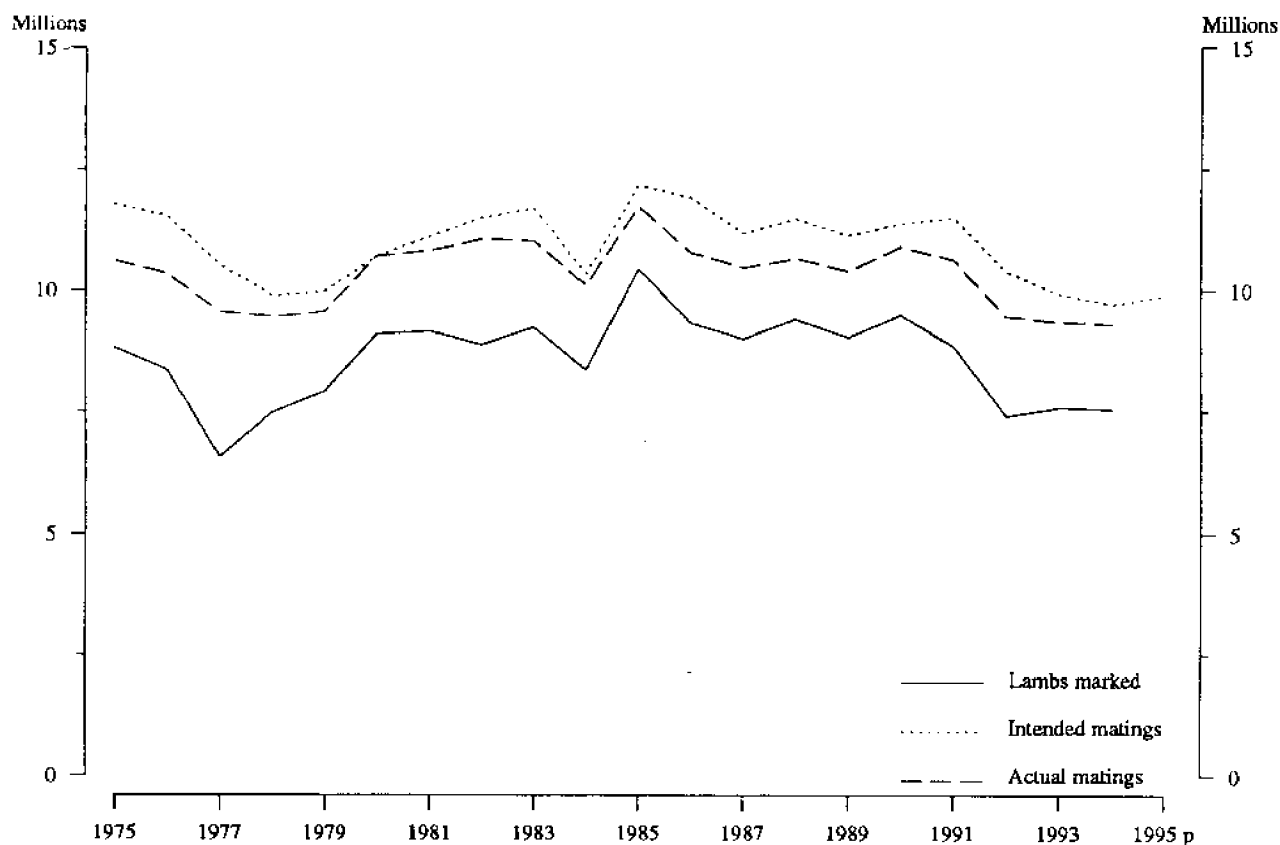
Statistical division	Lambs marked	Ewes mated to produce marked lambs	Lambing percentage
Melbourne	46.8	56.0	83.6
Barwon	372.1	490.4	75.9
Western District	2,214.5	2,845.7	77.8
Central Highlands	867.8	1,050.9	82.6
Wimmera	993.5	1,251.5	79.4
Mallee	701.9	801.6	87.6
Loddon-Campaspe	801.8	979.1	81.9
Goulburn	846.1	1,006.8	84.0
Ovens-Murray	187.9	214.4	87.6
East Gippsland	218.7	296.4	73.8
Gippsland	296.0	321.7	92.0
Total Victoria	7,547.2	9,314.6	81.0

TABLE 8. INTENDED MATINGS(a), VICTORIA, YEAR ENDED 31 MARCH 1993 TO 1995p
(*'000*)

Item	1993	1994	1995p	% change 1995p on 1994
EWES INTENDED TO BE MATED TO -				
Merino rams	5,369.3	5,086.8	4,969.9	-2.3
Other rams	4,554.6	4,630.5	4,925.0	6.4
Total intended matings	9,923.9	9,717.3	9,894.9	1.8

(a) As reported at 31 March.

LAMBING AND LAMBING INTENTIONS,
VICTORIA, YEAR ENDED 31 MARCH (a)



(a) Changes in scope, see Explanatory Notes, paragraph 4

TABLE 9. INTENDED MATINGS FOR THE YEAR ENDED 31 MARCH 1995p
(*'000*)

Statistical division	Ewes intended to be mated to -		Total intended matings
	Merino rams	Other rams	
Melbourne	12.1	35.6	47.7
Barwon	302.8	197.3	500.1
Western District	1,541.0	1,384.0	2,925.0
Central Highlands	827.4	383.1	1,210.5
Wimmera	824.2	534.4	1,358.6
Mallee	179.2	565.0	744.1
Loddon-Campaspe	545.9	494.5	1,040.4
Goulburn	369.2	613.5	982.6
Ovens-Murray	78.6	146.9	225.5
East Gippsland	198.1	92.5	290.6
Gippsland	91.4	478.2	569.5
Total Victoria	4,969.9	4,925.0	9,894.9

EXPLANATORY NOTES

1. This publication contains preliminary agricultural estimates for the 1993-94 season, together with estimates of intended sowings of principal crops and intended ewe matings for the forthcoming season. Comparative data for earlier years are also included. Because of possible changes in intentions caused by unforeseen circumstances, such as adverse climatic or economic conditions, estimates for the forthcoming season may not always agree with the reported statistics from the following Agricultural Census.

Scope and coverage

2. Estimates are based on preliminary information obtained in Victoria from the Agricultural Census conducted at 31 March 1994.

3. For the 1991-92 and 1992-93 Censuses, the scope was establishments undertaking agricultural activity having an estimated value of agricultural operations (EVAO) of \$22,500 or more. The scope of previous Censuses (from 1986-87) was establishments undertaking agricultural activity having an EVAO of \$20,000 or more.

The 1993-94 Census is based on a scope of \$5,000 or more. However, the estimates presented in this publication are based on the same scope as the previous two Censuses to enable direct comparisons to be drawn. Final results from the Census will be available based on both \$5,000 and \$22,500 EVAO thresholds.

4. The graphs presented in this publication do not show breaks in series caused by changes in scope as outlined above.

Related publications

5. Further preliminary agricultural statistics will be published in:

Principal Agricultural Commodities, Australia, Preliminary (7111.0) (annual)

Shearing and Wool Production Forecast, Australia, Preliminary (7210.0) (annual)

Selected Agricultural Commodities, Australia, Preliminary (7112.0) (annual)

6. Final Victorian figures will be published in a series of publications intended for release during November 1994 and the early part of 1995 when all Agricultural Census returns have been fully processed.

These publications are listed on the back page of this issue.

Current publications produced by the ABS are listed in the *Catalogue of Publications, Australia* (1101.0) which is available from any ABS office.

Other forms of release of agricultural statistics

7. In addition to releasing printed publications, *AgStats* provides statistics on magnetic tape, microfiche and floppy disk. *AgStats* contains data for all commodities and areas within Australia, at the statistical local area level of aggregation. Details are contained in *Agstats, Australia 1991-92 (revised edition)* (7107.0) available free on request, or by telephoning the Manager, Agriculture on (03) 615-7470.

Parish and statistical local area levels of aggregation in Victoria are available for 1982-83 to 1992-93 inclusive.

Unpublished agricultural statistics

8. In many cases ABS can provide additional unpublished information such as at the parish and statistical local area level of aggregation. In general a charge is made for this service.

Symbols and other usages

p preliminary - figure or series subject to revision

- nil or less than half the final digit

Where figures have been rounded, discrepancies may occur between sums of the component items and totals.

Acknowledgements

My thanks to farmers in Victoria and the staff of the Agriculture and Editorial Sub-sections who have made this publication possible.

STUART JACKSON
Deputy Commonwealth Statistician

VICTORIA

STATISTICAL DIVISIONS

As at 1 January 1991 (Interim)

© Commonwealth of Australia 1991

MALLEE

WIMMERA

LODDON-CAMPASPE

GOULBURN

OVENS-MURRAY

CENTRAL HIGHLANDS

MELBOURNE

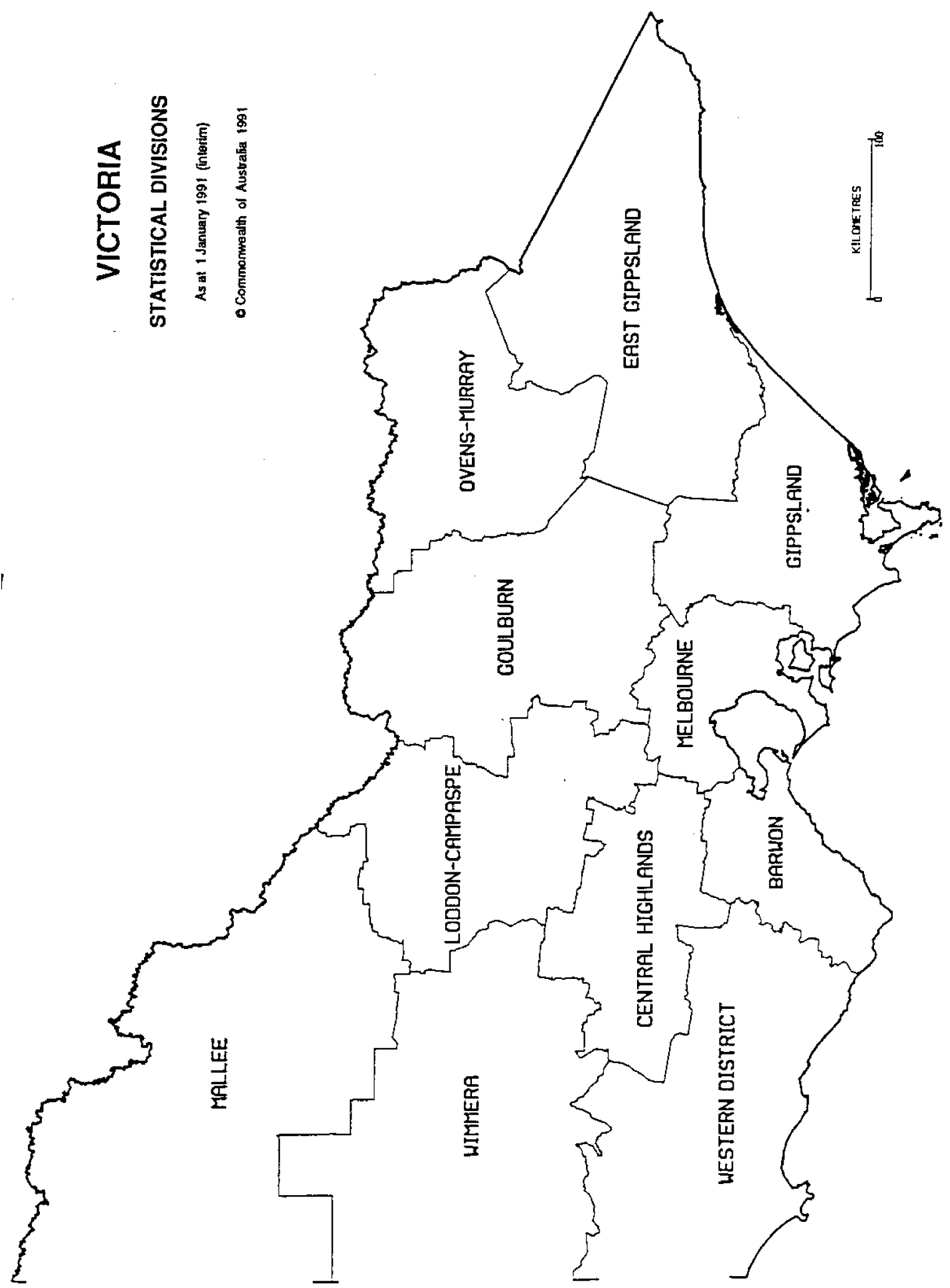
WESTERN DISTRICT

BARWON

GIPPSLAND

EAST GIPPSLAND

KILOMETRES
0 100



ABS data on agricultural activity

PRINTED VICTORIAN PUBLICATIONS FOR 1992-93

Agriculture Statistics - Selected Small Area Data

Cat.no. 7120.2

- Summary of Agricultural Land Use in Statistical Local Areas by Statistical Division
- Summary of Agricultural Activity undertaken in Statistical Local Areas by Statistical Division

Livestock and Livestock Products

Cat.no. 7221.2

- Number of cattle, sheep, pigs, poultry, lambing, and livestock products
- Beekeeping, other livestock, wool statistics, value of livestock slaughterings and products
- Numbers and area of establishments by size of meat and milk herd, sheep flock, and pig herd

Crops, Pastures and Fruit

Cat.no. 7330.2

- Area and number of agricultural establishments
- Area, production, and yield of: cereals for grain, oilseeds, tobacco, and lupins
- Area and production of vegetables with additional data on pastures, hay, green feed, and silage
- Fruit: Area and type
- For selected citrus, pome, stone, and other fruit: number of trees under 6 years, 6 years and over, and production
- Area and production of berry, vine, and other fruit

Agricultural Land Use and Selected Inputs

Cat.no. 7411.2

- Number, area, and land use of establishments with agricultural activity
- Area and type of crops and pastures artificially fertilised and quantity and type of fertiliser used
- Number of establishments classified by industry of establishment and estimated value of agricultural operations or area of establishment

Value of Agricultural Commodities Produced

Cat.no. 7503.2

- Gross values of production of crops, livestock slaughterings, and livestock products
- Average unit gross values for selected commodities
- Regional gross values of agricultural commodities produced

You can order these publications from the ABS Bookshop on (03) 615 7830.

Prices: 7120.2 - \$16.50

7221.2 - \$21.50

7330.2 - \$27.50

7411.2 - \$16.50

7503.2 - \$16.50

Special Data Service

- Most of the data presented in the above publications is also available as a special data service at statistical local area and parish levels of aggregation. In general a charge is made. Please contact the Manager, Agriculture, on Melbourne (03) 615 7000 for further information.

