



**PRINCIPAL AGRICULTURAL COMMODITIES
VICTORIA
PRELIMINARY
1994-95**

**W. McLennan
Australian Statistician**

AUSTRALIAN BUREAU OF STATISTICS

CATALOGUE NO. 7111.2

August 1995

CONTENTS

<i>Table</i>		<i>Page</i>
	Summary of Findings	2
Crops	1 Area Intended to be Sown to Cereal Crops for all purposes, Years Ended 31 March 1995 to 1996	5
	2 Area and Production of Principal Crops, Years Ended 31 March 1992 to 1995	5
Livestock	3 Sheep, Years Ended 31 March 1992 to 1995	6
	4 Matings and Lambings, Years Ended 31 March 1993 to 1996	6
	5 Cattle, Years Ended 31 March 1992 to 1995	6
	6 Pigs, Years Ended 31 March 1992 to 1995	7
	Explanatory Notes	8
<i>Graphs</i>		
	Production of Wheat and Barley for Grain, 1976-1995	2
	Average Yield of Wheat and Barley for Grain, 1976-1995	2
	Actual Sowings for 1994-95 and Intended Sowings for 1995-96	2
	Sheep and Lambs	3
	Lambing Ratio	3
	Dairy Cattle	4
	Beef Cattle	4
	Pigs	4

INQUIRIES

- *for more information about statistics in this publication and the availability of related unpublished statistics, contact the following officers: for agricultural statistics, Mr Frank McCallum on Hobart (002) 20 5939, Fax (002) 20 5879; for general queries, any ABS State office.*
- *for information about other ABS statistics and services please refer to back page of this publication.*

SUMMARY OF FINDINGS

Preliminary Victorian estimates from the 1994-95 Agricultural Census show:

CROPS

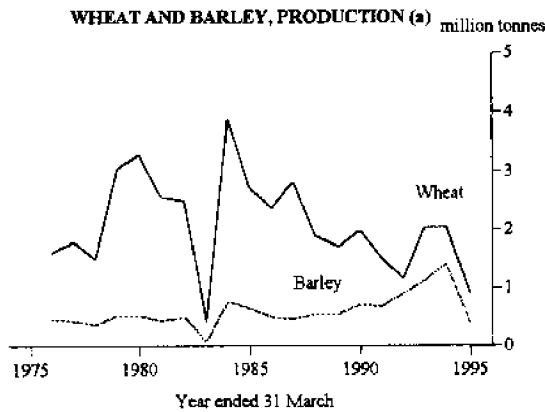
Wheat

The area of wheat planted during the 1994-95 season of 854 thousand hectares was up by nearly 10 per cent on the 780 thousand hectares planted during the previous year.

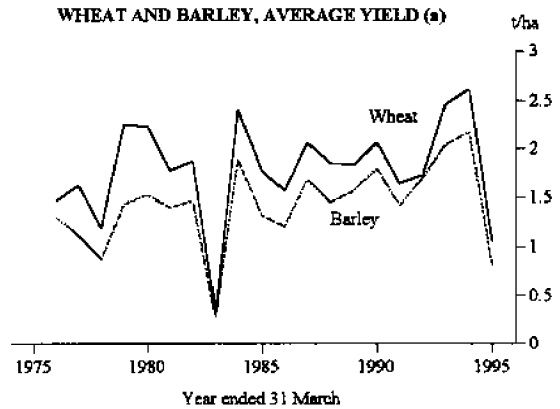
Wheat production of 898 thousand tonnes for 1994-95 was down 56 per cent on the 2,022 thousand tonnes harvested in 1993-94. Average yield of wheat at 1.1 tonnes per hectare was the lowest since 1983. The yield for 1994-95 was well down on the previous year's average of 2.6 tonnes per hectare.

Barley

The area of barley planted in 1994-95 was down by 24 per cent from 640 thousand hectares in 1993-94 to 486 thousand hectares. The production dropped 72 per cent from 1,386 thousand tonnes to just 385 thousand tonnes. This was reflected in the average yield which dropped to only 0.8 tonnes per hectare in 1994-95 compared with 2.2 tonnes per hectare the previous year.



(a) See paragraph 4 of the Explanatory Notes.



(a) See paragraph 4 of the Explanatory Notes.

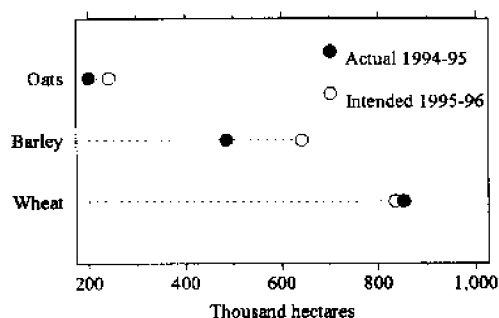
Oats

Oats for grain plantings were down from 186 thousand hectares in 1993-94 to 150 thousand hectares in 1994-95. Production was 48 per cent lower at 187 thousand tonnes in 1994-95. The average yield dropped from 1.9 tonnes per hectare in 1993-94 to 1.2 tonnes per hectare in 1994-95.

Intended sowings

Growers reported that intended sowings for 1995-96 for the main cereal crops are all higher than those intended for 1994-95. The area intended to be sown for wheat is 835 thousand hectares, up 1 per cent on the intended sowings for the previous year, but 2 per cent less than the amount actually sown in 1994-95. Growers intend to plant 243 thousand hectares of oats in 1995-96, up 33 per cent on 1994-95 intentions and 21 per cent higher than actual plantings for that year. Expected sowings of barley are 37 per cent higher than the 1994-95 intended figure and 30 per cent higher than the actual amount sown 1994-95.

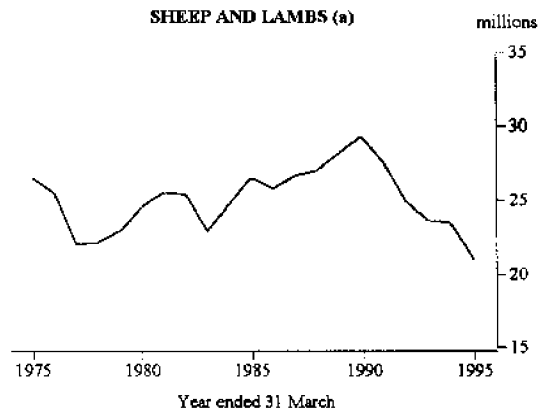
ACTUAL SOWINGS FOR 1994-95 AND INTENDED SOWINGS FOR 1995-96 FOR ALL PURPOSES



LIVESTOCK

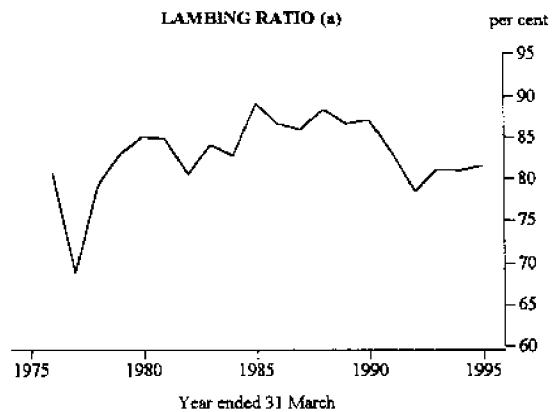
Sheep and lambs

The preliminary estimate for the total flock of sheep and lambs at 31 March 1995 was 21.0 million. This was 11 per cent down on 1994. There were 8 per cent fewer lambs and hoggets aged under one year and 11 per cent fewer other sheep.



(a) See paragraph 4 of the Explanatory Notes.

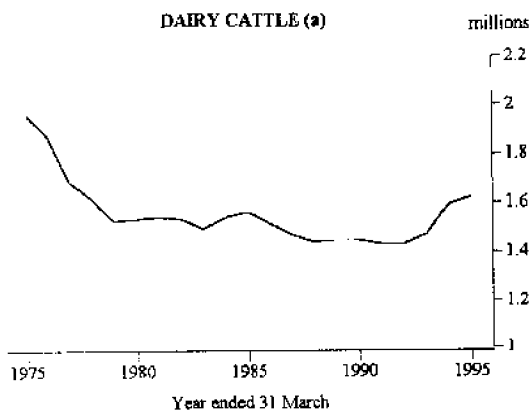
There were 9.1 million sheep mated during the year ended 31 March 1995. From these matings, 7.4 million lambs were marked. Matings fell by 2 per cent and the number of lambs marked fell by 2 per cent. For the 1993-94, season 81 per cent of matings resulted in lambs being marked. This rose slightly to 82 per cent for 1994-95.



(a) See paragraph 4 of the Explanatory Notes.

Dairy cattle

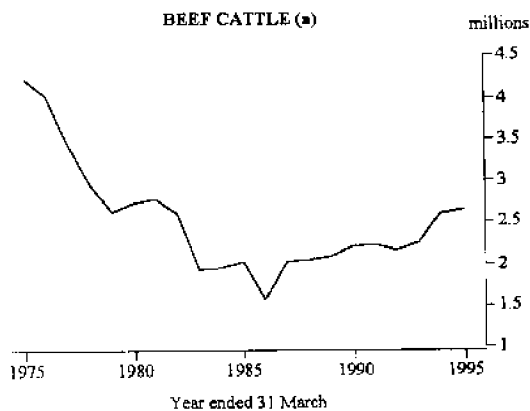
The Victorian dairy cattle herd increased from 1,585 thousand at 31 March 1994 to 1,662 thousand at 31 March 1995, an increase of 5 per cent. The dairy herd has increased steadily since 1992.



(a) See paragraph 4 of the Explanatory Notes.

Beef cattle

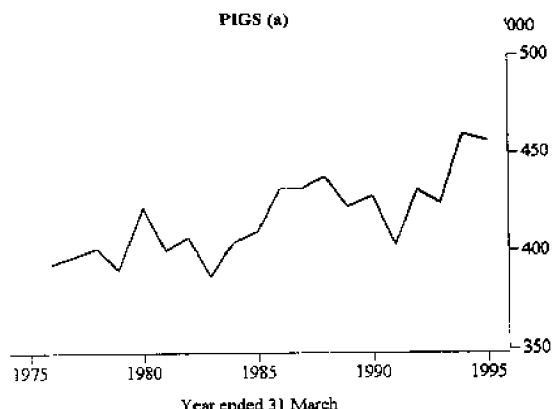
Beef cattle numbers increased by 1 per cent during the year ended 31 March 1995 to 2.6 million. Bulls and bull calves for service rose 9 per cent during the period, while other calves rose by 3 per cent. Cows and heifers aged over one year fell by 1 per cent during the period.



(a) See paragraph 4 of the Explanatory Notes.

Pigs

Pig numbers in Victoria fell 1 per cent to 456 thousand during the twelve month period ending 31 March 1995.



paragraph 4 of the Explana

PRINCIPAL CROPS

TABLE 1. AREA INTENDED TO BE SOWN TO CEREAL CROPS FOR ALL PURPOSES (a), YEARS ENDED 31 MARCH 1995 TO 1996

	<i>Intended sowings 1995</i>	<i>Actual sowings 1995p</i>	<i>Intended sowings 1996p</i>	<i>Change 1996p over 1995 (%) (b)</i>	<i>Standard error (%) (c)</i>
<i>'000 hectares</i>					
Barley	463.8	485.6	633.4	36.6	1.5
Oats	182.2	200.3	243.2	33.5	2.9
Wheat	827.6	853.7	835.4	-0.9	1.1

(a) The area intended to be sown during 1996 is presented as a possible basis for forecasting the total area to be sown for that season. But, because of the possibility of later changes in intention caused by unforeseen circumstances such as adverse climatic or economic conditions, this estimate may not necessarily be the area actually sown during the current season.

(b) Percentage change of 1996 intended sowings over 1995 intended sowings.

(c) Standard errors are calculated on 1996 preliminary estimates for intended sowings.

TABLE 2. AREA AND PRODUCTION OF PRINCIPAL CROPS, YEARS ENDED 31 MARCH 1992 TO 1995 (a)

	<i>1992</i>	<i>1993</i>	<i>1994</i>	<i>1995p</i>	<i>Change 1995p over 1994 (%) (b)</i>	<i>Standard error (%) (b)</i>
<i>Area ('000 hectares)</i>						
Cereals for grain						
Barley	533.9	551.5	639.5	485.6	-24.1	1.4
Oats	182.8	222.9	185.8	149.7	-19.4	4.1
Wheat	664.1	821.2	779.9	853.7	9.5	1.0
Other crops						
Field peas	193.6	174.3	199.9	228.7	14.4	2.2
Lupins	36.7	52.6	55.1	69.8	26.7	6.1
<i>Production ('000 tonnes)</i>						
Cereals for grain						
Barley	897.9	1,116.3	1,386.2	384.8	-72.2	2.3
Oats	300.4	403.9	362.0	186.9	-48.4	4.5
Wheat	1,150.4	2,015.2	2,021.9	897.5	-55.6	1.4
Other crops						
Field peas	211.7	246.3	292.6	64.6	-77.9	4.4
Lupins	40.5	82.5	59.5	19.2	-67.7	5.4
<i>Yield (tonnes per hectare)</i>						
Cereals for grain						
Barley	1.7	2.0	2.2	0.8	-63.6	n.a.
Oats	1.6	1.8	1.9	1.2	-36.8	n.a.
Wheat	1.7	2.5	2.6	1.1	-57.7	n.a.
Other crops						
Field peas	1.1	1.4	1.5	0.3	-80.0	n.a.
Lupins	1.1	1.6	1.1	0.3	-72.7	n.a.

(a) See paragraph 4 of the Explanatory Notes.

(b) Standard errors are calculated on the 1995 preliminary estimates for area and production of principal crops.

LIVESTOCK

TABLE 3. SHEEP, YEARS ENDED 31 MARCH 1992 TO 1995 (a)

	1992	1993	1994	1995p	Change 1995p over 1994 (%)	Standard error (%) (b)
	(000)					
Lambs and hoggets under one year	4,769.3	4,726.7	5,131.3	4,732.7	-7.8	1.4
Other sheep	20,012.6	18,828.1	18,307.4	16,227.7	-11.4	1.4
Total	24,781.9	23,554.8	23,438.7	20,960.4	-10.6	2.8

(a) See paragraph 4 of the Explanatory Notes.

(b) Standard errors are calculated on the 1995 preliminary estimate of sheep numbers.

TABLE 4. MATINGS AND LAMBINGS, YEARS ENDED 31 MARCH 1993 TO 1996 (a)

	1993	1994	1995	1996p	Standard error (%) (b)
	(000)				
Farmers' forecast of intended matings of ewes for lambing					
To merino rams	5,369.3	5,086.8	4,987.3	4,977.8	1.1
To rams of other breeds	4,554.6	4,630.5	4,774.1	3,803.4	1.8
Total intended matings	9,923.9	9,717.3	9,761.4	8,781.2	2.9
Actual matings	9,352.3	9,324.6	9,115.2p	n.y.a.	n.a.
Lambs marked	7,592.3	7,549.5	7,431.2p	n.y.a.	n.a.
	Per cent				
Actual matings as a percentage of intended matings	94.2	96.0	93.4p	n.a.	n.a.
Lambs marked as a percentage of Actual matings	81.2	81.0	81.5p	n.a.	n.a.

(a) See paragraph 4 of the Explanatory Notes.

(b) Standard errors are calculated on the 1996 preliminary estimates for intended matings.

TABLE 5. CATTLE, YEARS ENDED 31 MARCH 1992 TO 1995 (a)

	1992	1993	1994	1995p	Change 1995p over 1994 (%)	Standard error (%) (b)
	(000)					
Dairy cattle						
Cows, in milk and dry	991.4	1,018.8	1,084.9	1,144.3	5.5	0.5
Bulls and bull calves for service	19.2	20.1	22.5	517.7	3.6	1.0
Heifers and heifer calves	411.3	424.1	477.3			
Total dairy cattle	1,421.9	1,463.0	1,584.7	1,662.0	4.9	1.5
Beef cattle						
Bulls and bull calves for service	60.2	61.9	68.2	74.3	8.9	1.6
Other calves one year and under	608.9	605.5	711.0	732.3	3.0	0.9
Cows and heifers, one year and over	1,052.5	1,129.1	1,324.5	1,307.7	-1.3	0.6
Other cattle	430.6	429.4	500.3	517.9	3.5	7.0
Total beef cattle	2,152.2	2,225.9	2,604.0	2,632.2	1.1	10.1
Total all cattle	3,574.1	3,688.9	4,188.7	4,294.2	2.5	11.6

(a) See paragraph 4 of the Explanatory Notes.

(b) Standard errors are calculated on the 1995 preliminary estimates for cattle numbers.

TABLE 6. PIGS, YEARS ENDED 31 MARCH 1992 TO 1995 (a)

	1992	1993	1994	1995 ^p	Change 1995 ^p over 1994 (%)	Standard error (%) (b)
		(000)				
Total pigs	430.7	424.5	459.7	455.8	-0.8	1.1

(a) See paragraph 4 of the Explanatory Notes.

(b) Standard errors are calculated on 1995 preliminary estimates for pig numbers.

EXPLANATORY NOTES

Introduction

1. This publication contains preliminary agricultural estimates for the 1994-95 season, together with estimates of intended sowings of principal crops and intended ewe matings for the forthcoming season. Comparative data for the three previous years is also included.

Scope and coverage

2. From 1986-87 to 1990-91 the scope of the Census included those establishments undertaking agricultural activity and having an estimated value of agricultural operations (EVAO) of \$20,000 or more. Prior to 1986-87 the EVAO cut-off was \$2,500 or more. From 1991-92 to 1992-93, only those establishments with an EVAO of \$22,500 or more were included.

3. From 1993-94 the census is based on a scope of \$5,000 or more EVAO.

4. The figures shown in tables in this publication for 1993-94 and 1994-95 are based on the \$5,000 EVAO cut-off. The figures for 1991-92 and 1992-93 have not been adjusted to a \$5,000 EVAO basis and therefore are not comparable with later years. The data presented in the graphs are based on the scope of the collection which applied at the time.

Reliability of estimates

5. Since the estimates are based on a proportion (approximately 40%) of agricultural establishments selected for survey in 1994-95, they are subject to sampling variability. That is, they may differ from the figures that would have been produced if all units had been included.

6. One measure of the likely difference is given by the *standard error*, which indicates the extent to which an estimate might have varied because only a sample of units was included. There are about two chances in three that a sample estimate will differ by less than one standard error from the figure that would have been obtained if all units had been included and about nineteen chances in twenty that the difference will be less than two standard errors.

7. In this publication, sampling variability is measured by the relative standard error which is obtained by expressing the standard error as a percentage of the estimate to which it refers. The relative standard error is a useful measure, in that it provides an immediate indication of the percentage errors likely to have occurred due to sampling. It avoids the need to refer also to the size of the estimate.

8. As an example of the above, if a sample gives an estimate of 1,000 hectares and the relative standard error is five per cent then there would be two chances in three that, if all units were included, a figure within the range of 950 to 1,050 hectares would have been obtained. There would also be nineteen chances in twenty that the figure would lie within the range 900 to 1,100 hectares.

Symbols

kg	kilograms
n.a.	not available
n.y.a.	not yet available
p	preliminary - figure or series
t	tonnes
t/ha	tonnes per hectare

General

9. Revised estimates will be available in mid September this year when most of the Agricultural Census returns have been processed. Final results will be published early in 1996.

10. The ABS has a more detailed agricultural statistics on MS-DOS compatible floppy disk, compact disk, microfiche and magnetic tape. AgStats on floppy disk and compact disk offers a wider range of data aggregated at a smaller geographical areas than those generally available in printed publications. Both systems come complete with an easy-to-use, menu-driven interrogation facility.

11. Current publications and other standard products and services are listed in the Catalogue of Publications (1101.0). The catalogue is available from any ABS office.



For more information ...

The ABS publishes a wide range of statistics and other information on Australia's economic and social conditions. Details of what is available in various publications and other products can be found in the *ABS Catalogue of Publications and Products* available at all ABS Offices (see below for contact details).

Information Consultancy Service

Information tailored to special needs of clients can be obtained from the Information Consultancy Service available at ABS Offices (see Information Inquiries below for contact details).

National *Dial-a-Statistic* Line

0055 86 400

(Steadycom P/L: premium rate 25c/21.4 secs.)

This number gives 24-hour access, 365 days a year, for a range of statistics.

Electronic Data Services

A large range of data is available via on-line services, diskette, magnetic tape, tape cartridge and CD ROM. For more details about these electronic data services, contact any ABS Office (see below).

Bookshops and Subscriptions

There is a large number of ABS publications available from ABS bookshops (see below Bookshop Sales for contact details). The ABS also provides a subscription service through which nominated publications are supplied by mail on a regular basis (telephone Subscription Service toll free on 008 02 0608 Australia wide).

Sales and Inquiries

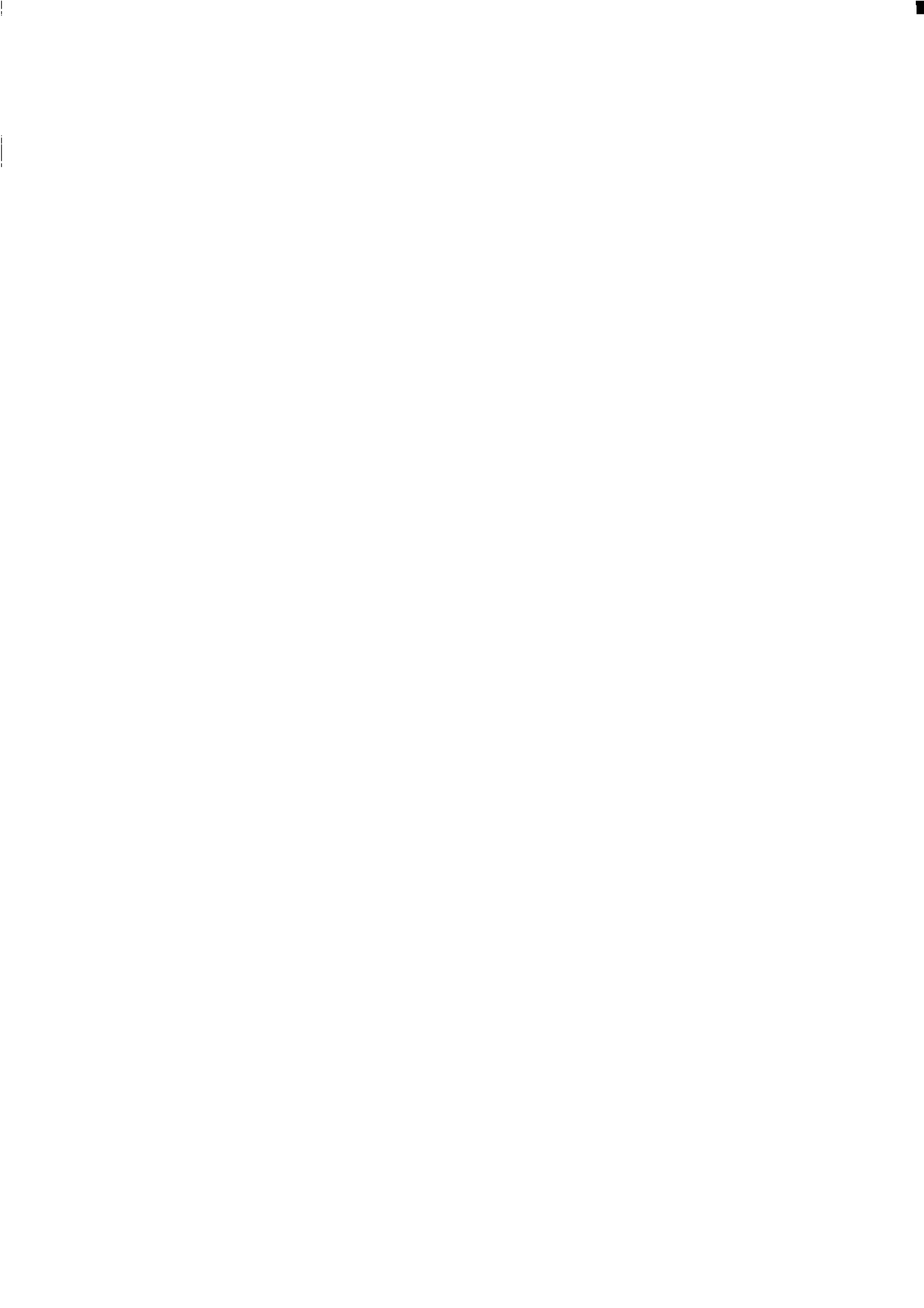
Regional Offices	Information Inquiries	Bookshop Sales
SYDNEY (02)	268 4611	268 4620
MELBOURNE (03)	615 7000	615 7829
BRISBANE (07)	222 6351	222 6350
PERTH (09)	360 5140	360 5307
ADELAIDE (08)	237 7100	237 7582
HOBART (002)	20 5800	20 5800
CANBERRA (06)	207 0326	207 0326
DARWIN (089)	43 2111	43 2111
National Office		
ACT (06)	252 6007	008 020 608

ABS Email Addresses

Keylink	STAT.INFO/ABS
X.400	(C:AU,A:TELMEMO,O:ABS,SN:INFO,FN:STAT)
Internet	STAT.INFO@ABS. TELEMEMO.AU



Information Services, ABS, PO Box 10, Belconnen ACT 2616



Catalogue No. 7111.2 PRINCIPAL AGRICULTURAL COMMODITIES, VICTORIA, PRELIMINARY, 1994-95

© Commonwealth of Australia 1995

Recommended retail price: \$11.50



2711120007944
ISSN 0810-0640