

#### Symbols and other usages

ha — hectares (2.5 acres)	n.e.c. — not elsewhere classified
kg — kilograms	p — preliminary
l — litres	r — revised
\$m — million dollars	t — tonnes
m — million	* — see note 2, below
n.c. — not collected	

#### Notes:

1. Where figures have been rounded, discrepancies may occur between sums of component items and totals.
2. The statistics relate to agricultural establishments with an Estimated Value of Agricultural Operations (EVAO) of \$20,000 or more prior to 1991-92, and from 1991-92 with an EVAO of \$22,500 or more unless indicated with an asterisk \*.

This brochure is intended to give no more than a general indication of various aspects of Australian agriculture. The Australian Bureau of Statistics' agricultural statistics program aims to provide a balanced range of commodity and financial statistics relating to agriculture. The main elements of this program involve the conduct of an annual integrated agricultural commodity census; a number of additional commodity surveys; an agricultural finance survey; the production of a range of derived statistics including estimates of the value of agricultural commodities produced; and estimates of the apparent consumption of foodstuffs and nutrients.

Agricultural statistics are available in publications, on magnetic tape, floppy disk, compact disk, and microfiche as well as unpublished data which may be available on request. Ag-Stats on floppy disk, microfiche and compact disk offers a wide range of data aggregated to small geographic areas. Over 1300 individual Statistical Local Areas, covering all of Australia, can be cross referenced with any or all of more than 800 commodity items. Complete regional profiles of agricultural activity and production can be obtained for any individual area, or can be aggregated to State or Australia level.

Australian Bureau of Statistics -

Contacts for Agricultural Services in State Offices:

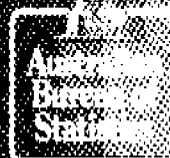
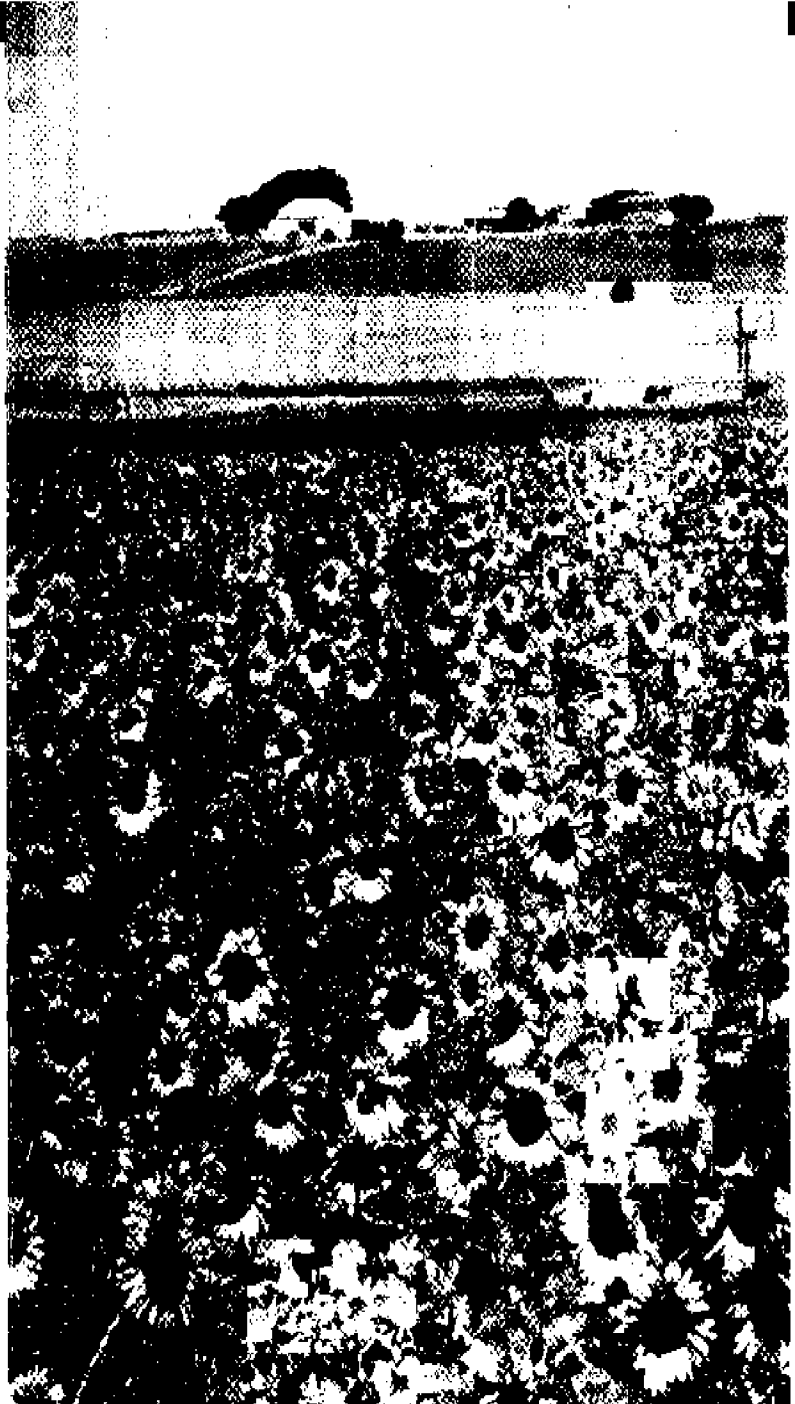
Australian Capital Territory	Henry Stanik 008 801 520
New South Wales	Graham Oxford 02 268 4165
Victoria	Greg Attrill 03 615 7469
Queensland	Andrew Klapacz 07 222 6180
Western Australia	Renee Gibson 09 323 5178
South Australia	Vera Dorney 08 237 7655
Tasmania	Tony Gadd 002 20 5889
Northern Territory	Steve White 089 432 160

Or write to Information Services, Australian Bureau of Statistics, P.O. Box 10, Belconnen, ACT 2616, Australia.

Photos: Australian Overseas Information Service, Department of Foreign Affairs and Trade.

© Commonwealth of Australia 1993

ABS Catalogue No. 7106.0



1 9 9 3

AUSTRALIAN  
LIVING  
LIBRIEF

Employed persons in Agriculture and services to Agriculture* - August	1990	1991	1992
Males '000	282.9	287.0	260.5
Females "	116.8	115.2	113.6
Persons "	399.7	382.2	374.1

Employed persons in all industries*	1990	1991	1992
Males "	4,583.8	4,443.7	4,433.4
Females "	3,241.2	3,225.5	3,245.8
Persons "	7,825.0	7,669.2	7,679.3

Land use on farms	1989-90	1990-91	1991-92
Number of establishments engaged in agricultural activity '000	128.5	126.4	122.1
Total area of establishments m ha	464.3	462.8	466.0
Average size of establishments ha	3,585.3	3,661.4	3,816.5
Area of crops m ha	17.0	17.4	16.4
Area of sown pastures and grasses m ha	30.9	28.3	30.8
<b>Total area of Australia</b> m ha		<b>-768.3-</b>	

Crop Area	1990	1991	1992
Wheat for grain '000 ha	9,004	9,218	7,183
Barley for grain "	2,310	2,556	2,744
Oats for grain "	1,089	1,044	1,160

Fertiliser and soil conditioners used	1989-90	1990-91	1991-92
Area fertilised m ha	27.4	23.6	19.5
Quantity of fertilisers used '000 t	3,870.8	3,239.1	2,678.3
Area of soil conditioners used '000 ha	n.c.	165.6	716.1
Soil conditioners used '000 t	n.c.	200.9	n.c.

Number of establishments with agricultural activity, by industry, year ended 31 March	1990	1991	1992
Poultry for meat	681	679	668
Poultry for eggs	645	617	603
Grapes	3,521	3,514	3,466
Plantation fruit	1,580	1,521	1,432
Orchard and other fruit	5,271	4,961	4,863
Potatoes	1,380	1,319	1,391
Vegetables (excl. potatoes)	3,451	3,314	3,189
Cereal grains (incl. oilseeds n.e.c.)	7,178	6,865	6,342
Sheep-cereal grains	19,556	19,560	17,048
Meat cattle-cereal grains	2,653	2,660	2,349
Sheep-meat cattle	8,747	9,244	11,259
Sheep	26,289	24,298	19,392
Meat cattle	18,948	19,509	19,801
Milk cattle	14,451	13,854	13,595
Pigs	1,733	1,698	1,730
Sugar cane	5,203	4,996	4,983
Peanuts	163	196	234
Tobacco	502	475	454
Cotton	586	669	811
Nurseries	2,283	2,289	2,148
Agriculture n.e.c.	2,877	2,641	2,753
All other industries	892	736	656
Unclassified	870	771	893
<b>Total</b>	<b>129,539</b>	<b>126,392</b>	<b>122,054</b>

Establishments with agricultural activity	1990	1991	1992
Number of establishments with—			
Wheat for grain	30,932	30,645	26,115
Barley for grain	20,110	20,823	20,644
Oats for grain	20,623	20,095	20,207
Sheep and lambs	63,716	62,342	59,589
Milk cattle	17,032	15,762	15,229
Meat cattle	68,558	67,107	65,486
<b>Total establishments in Australia</b>	<b>129,539</b>	<b>126,392</b>	<b>122,054</b>

Number of establishments with agricultural activity by Estimated Value of Agricultural Operations, year ended 31 March	1990	1991	1992
\$0 - \$29,999	14,322	13,202	13,083
\$30,000 - \$39,999	8,344	7,671	8,069
\$40,000 - \$49,999	7,710	7,011	7,622
\$50,000 - \$59,999	7,096	6,690	6,978
\$60,000 - \$74,999	9,789	9,308	9,643
\$75,000 - \$99,999	15,291	14,651	14,236
\$100,000-\$149,999	22,234	21,942	21,496
\$150,000-\$199,999	13,809	13,914	13,375
\$200,000-\$499,999	24,371	25,142	21,933
\$500,000 and more	6,573	6,881	5,55
<b>Total</b>	<b>129,539</b>	<b>126,392</b>	<b>122,054</b>

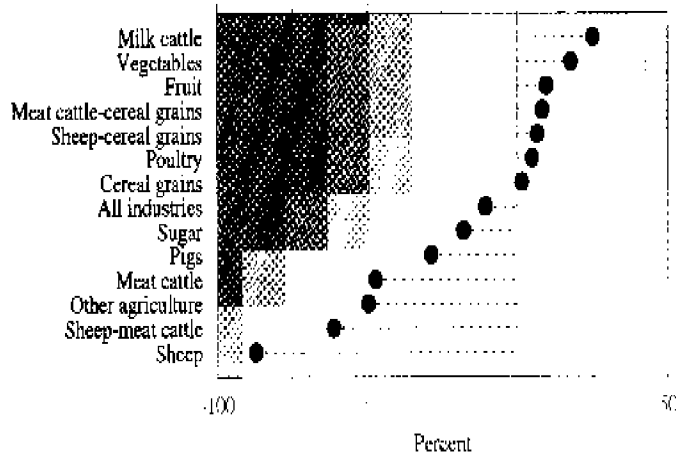
Turnover of farm businesses, by industry	1990-91	1991-92
Poultry \$m	486.9	538.2
Fruit "	1,417.9	1,384.5
Vegetables "	980.0	1,116.1
Cereal grains "	1,173.9	1,745.4
Sheep-cereal grains "	3,272.3	2,793.9
Meat cattle-cereal grains "	518.8	387.4
Sheep-meat cattle "	1,461.9	1,438.5
Sheep "	2,987.2	1,721.4
Meat cattle "	2,183.1	2,292.9
Milk cattle "	1,827.8	2,091.2
Pigs "	613.6	643.8
Sugar "	790.0	702.9
Cotton(a) "	n.c.	918.7
Other agriculture(a) "	1,457.3	801.0
<b>All industries</b>	<b>19,190.6</b>	<b>18,576.0</b>

Average turnover of farm businesses, by industry	1990-91	1991-92
Poultry \$'000	460.1	461.2
Fruit "	163.4	154.7
Vegetables "	241.3	286.2
Cereal grains "	231.7	192.2
Sheep-cereal grains "	181.6	171.4
Meat cattle-cereal grains "	201.9	184.7
Sheep-meat cattle "	166.5	134.4
Sheep "	141.1	101.3
Meat cattle "	147.3	154.4
Milk cattle "	135.5	152.9
Pigs "	337.3	376.3
Sugar "	175.8	150.3
Cotton(a) "	n.c.	1,428.8
Other agriculture(a) "	347.0	163.4
<b>All industries</b>	<b>177.2</b>	<b>168.4</b>

Average cash operating surplus of farm businesses, by industry	1990-91	1991-92
Poultry \$'000	69.6	73.1
Fruit "	32.1	35.2
Vegetables "	43.4	51.1
Cereal grains "	41.4	42.0
Sheep-cereal grains "	28.5	30.4
Meat cattle-cereal grains "	37.9	41.1
Sheep-meat cattle "	23.7	9.2
Sheep "	17.5	2.3
Meat cattle "	30.1	15.9
Milk cattle "	31.0	38.8
Pigs "	55.3	39.5
Sugar "	52.4	43.0
Cotton(a) "	n.c.	301.2
Other agriculture(a) "	67.1	33.9
<b>All industries</b>	<b>31.5</b>	<b>28.2</b>

(a) Prior to 1991-92 the estimate for Cotton was included in 'Other agriculture'.

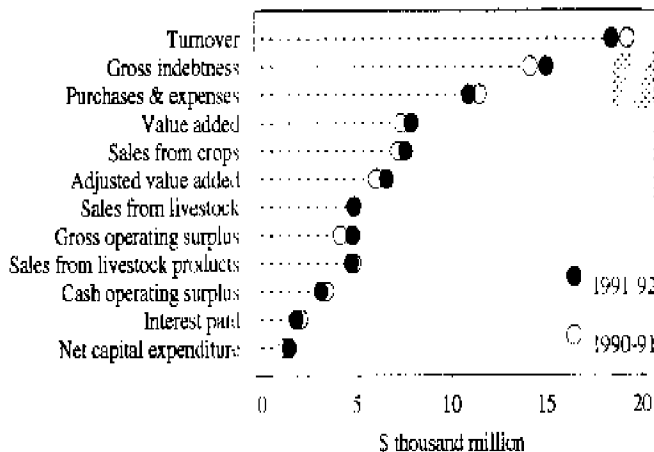
**AVERAGE CASH OPERATING SURPLUS OF FARM BUSINESSES, BY INDUSTRY, PERCENTAGE CHANGE 1991-92 ON 1990-91**



**Financial statistics of farm businesses**

	1990-91	1991-92
Sales from crops	\$m 7,196.7	7,718.3
Sales from livestock	" 4,864.5	4,905.3
Sales from livestock products	" 5,853.6	4,753.6
Turnover	" 19,190.6	18,576.0
Purchases and selected expenses	" 10,892.5	10,726.3
Value added	" 7,347.7	8,039.5
Adjusted value added	" 6,023.1	6,729.1
Gross operating surplus	" 4,133.6	4,876.5
Interest paid	" 2,066.0	1,820.4
Cash operating surplus	" 3,412.8	3,095.0
Total net capital expenditure	" 1,216.6	1,420.8
Gross indebtedness	" 14,140.6	14,819.2

**FINANCIAL STATISTICS OF FARM BUSINESSES 1990-91 AND 1991-92**



**Crop production**

	1989-90	1990-91	1991-92
Cereals for grain—			
Barley	'000 t 4,044	4,108	4,530
Grain sorghum	" 946	751	1,447
Maize	" 219	194	269
Oats	" 1,640	1,530	1,690
Rice	" 846	740	957
Wheat	" 14,214	15,066	10,557
Legumes for grain—			
Field peas	" 388	318	473
Lupins	" 772	758	1,047
Crops for hay—			
Barley	" 68	n.c.	n.c.
Oats	" 720	829	1,155
Wheat	" 158	52	64
Other	" 17	(a)187	(a)261
Oilseeds—			
Linseed	" 2	4	5
Rapeseed/Canola	" 78	98	170
Safflower	" 21	10	28
Soybeans	" 77	62	63
Sunflower	" 73	152	84
Other crops—			
Sugar cane, cut for crushing	" 26,940	24,370	20,640
Tobacco	" 12	13	11
Cotton (seed cotton)	" 792	1,129	1,278
Peanuts (in shell)	" 18	27	39

**Vegetables for human consumption—**

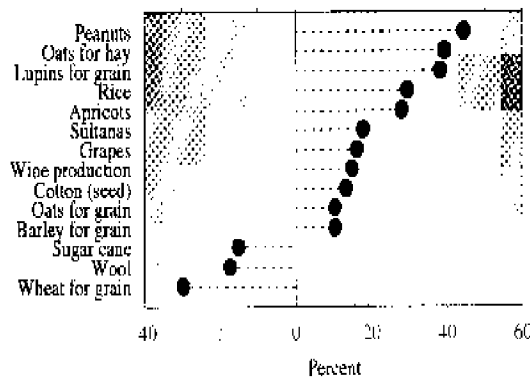
Beans, french and runner	" 38	30	32
Cabbages and brussels sprouts	" 84	82	85
Carrots	" 155	152	158
Cauliflower	" 89	90	78
Green peas—			
Processing (shelled weight)	" 50	41	37
Sold in pod (pod weight)	" 1	1	1
Lettuce	" 88	98	101
Onions, white and brown	" 193	222	221
Potatoes	" 1,178	1,136	1,150
Pumpkins	" 83	84	79
Sweet corn	" 65	50	50
Tomatoes	" 322	364	331

**Fruit production**

Orchard fruit—			
Citrus fruit—			
Oranges	" 487	453	470
Lemons and limes	" 36	32	33
Mandarin	" 40	40	44
Grapefruit	" 30	26	27
Pome—			
Apples	" 319	299	316
Pears	" 164	160	180
Stone and other—			
Apricots	" 30	25	32
Cherries	" 5	5	5
Nectarines	" 10	12	14
Peaches	" 58	58	62
Plums and prunes	" 20	20	22
Nuts—			
Almonds (in shell)	" 7	7	8
Macadamia	" 6	7	7
Tropical and other fruit—			
Bananas	" 180	165	177
Pineapples	" 142	126	133

(a) Includes cereals not collected separately.

**PRODUCTION OF SELECTED AGRICULTURAL COMMODITIES  
PERCENTAGE CHANGE 1991-92 ON 1990-91**



<b>Livestock numbers at 31 March</b>	<b>1990</b>	<b>1991</b>	<b>1992</b>
Cattle and calves	'000 23,162	23,662	23,890
Sheep and lambs	" 170,297	163,238	148,203
Pigs	" 2,648	2,531	2,792
Poultry	" 56,990	52,472	55,743
<b>Livestock products, year ended 30 June *</b>	<b>1990</b>	<b>1991</b>	<b>1992</b>
<b>Meat production (carcass weight)</b>			
Beef	'000 t 1,642	1,723	1,753
Veal	" 35	36	38
Mutton	" 333	381	382
Lamb	" 295	287	275
Pigmeat	" 317	312	336
Chicken meat (dressed weight)	" 380	388	416
Total wool (greasy basis)	" 1,050	1,013	837
Whole milk factory intake	m litres 6,263	6,403	6,731
<b>Grapes and grape products</b>	<b>1989-90</b>	<b>1990-91</b>	<b>1991-92</b>
<b>Area of vines at harvest—</b>			
Bearing	'000 ha 53.9	54.4	56.4
Not yet bearing	" 5.3	5.6	4.6
<b>Total</b>	<b>59.2</b>	<b>60.1</b>	<b>61.0</b>
<b>Grape utilisation (fresh weight)—</b>			
Wine making	'000 t 531.0	487.7	564.5
Drying	" 249.1	316.8	372.9
Table/other	" 144.9	47.4	50.6
<b>Total</b>	<b>824.3</b>	<b>851.1</b>	<b>987.1</b>
<b>Dried fruit production (dried weight)—</b>			
Currants	" 4.8	3.2	5.4
Sultanas	" 46.6	62.1	72.9
Praisins	" 3.8	4.2	3.8
<b>Total</b>	<b>55.2</b>	<b>69.5</b>	<b>82.1</b>
<b>Gross value of grapes</b>			
Winemaking	\$m 238.0	171.6	228.3
Drying	" 101.9	129.2	130.6
Table	" 52.4	61.3	74.1
<b>Total</b>	<b>392.2</b>	<b>362.0</b>	<b>433.0</b>
<b>Australian wine production— *</b>			
Fortified beverage wine	'000 l 32,904	33,817	33,003
Unfortified beverage wine	" 349,913	312,024	364,157
Distillation wine	" 61,767	54,068	61,342
<b>Gross total wine</b>	<b>444,584</b>	<b>399,909</b>	<b>458,501</b>
<b>Net total wine</b>			
(excludes grape spirit used for fortifying)	" 439,264	394,289	452,565
<b>Exports and imports of wine— *</b>			
Exports	" 138,120	154,160	78,576
Imports	" 10,453	8,999	8,703

**Apparent consumption of selected foodstuffs (per head per year) year ended 30 June\***

	<b>1981-82</b>	<b>1986-87</b>	<b>1991-92p</b>	
Beef and veal	kg 49.8	39.2	37.1	
Lamb	" 16.3	15.0	13.4	
Mutton	" 3.5	7.4	6.8	
Pigmeat	" 15.1	16.8	18.7	
Poultry	" 19.6	23.5	26.0	
Margarine (table and other)	" 9.5	8.9	8.3	
Butter	" 4.3	3.5	2.6	
Cheese	" 7.0	18.5	8.8	
Market milk	litres 103.1	102.9	101.2	
Beer	" 128.6	111.3	101.9	
Wine	" 19.1	21.0	18.6	
Spirits	litres alcohol 1.16	1.18	1.12	
<b>Aerated and carbonated waters</b>	litres	64.2	61.2	94.5
Tea	kg 1.6	1.3	1.0	
Coffee	" 1.9	1.8	2.1	

**Gross value of agricultural commodities produced**

	<b>1989-90</b>	<b>1990-91</b>	<b>1991-92</b>
Wool	\$m 5,718.1	4,180.9	2,979.5
Cattle and calves	" 3,860.5	3,869.4	3,801.9
Wheat for grain	" 2,775.1	1,988.1	2,097.2
Milk	" 1,749.0	1,824.8	1,960.0
Vegetables	" 1,328.2	1,284.9	1,242.4
Fruit and nuts	" 1,022.1	1,059.6	1,304.1
Sugar cane cut for crushing	" 874.0	748.0	602.7
Poultry	" 777.9	788.3	778.0
Barley for grain	" 708.8	568.3	680.9
Pigs	" 656.0	691.0	658.6
Cotton	" 639.5	898.0	878.6
Sheep and lambs	" 585.4	684.2	460.6
Pastures and grasses	" 495.3	582.0	598.9
Nurseries and turf	" 444.2	442.6	482.4
Grapes	" 392.2	362.0	433.0
Legumes for grain	" 294.5	286.0	395.2
<b>Total agriculture</b>	<b>23,585.1</b>	<b>21,158.5</b>	<b>20,861.3</b>

**GROSS VALUE OF AGRICULTURAL COMMODITIES PRODUCED**  
Year ended 30 June

