



THE LABOUR FORCE AUSTRALIA

NOVEMBER 1981

CATALOGUE NO. 6203.0

AUSTRALIAN BUREAU OF STATISTICS Canberra

PHONE INQUIRIES *for more information about these statistics*—contact Mr Godfrey Laurie on Canberra (062) 52 6565 or any of our State offices.

other inquiries including copies of publications—contact Information Services on Canberra (062) 52 6627 or in any of our State offices.

MAIL INQUIRIES *write to* Information Services, ABS, P.O. Box 10, Belconnen, A.C.T. 2616 or any of our State offices.

CATALOGUE NO. 6203.0

NOON 16 FEBRUARY 1982

THE LABOUR FORCE, AUSTRALIA, NOVEMBER 1981

CONTENTS

<i>Table</i>		<i>Page</i>
PART 1. LABOUR FORCE ESTIMATES		
..	Explanatory notes	1
..	Graphs	5
Civilian population aged 15 years and over: employment status—		
1.	Australia	8
2.	Marital status	10
3.	States and Territories	10
4.	State capital cities	11
5.	Australian Capital Territory	11
Civilian population aged 15 to 24 years (single years): employment status—		
6.	Aged 15 to 19 years: whether or not attending school	12
7.	Aged 20 to 24 years	12
Civilian labour force—		
8.	Seasonally adjusted series	13
9.	Employment status and birthplace	14
10.	Born outside Australia, by employment status and period of arrival in Australia	15
11.	Age	16
12.	Participation rates, by age and birthplace	16
Employed persons—		
13.	Full-time and part-time status, by age	16
14.	Industry, occupation and full-time and part-time status	17
15.	Industry by age	17
16.	Industry by occupational status	18
17.	Hours worked	19
18.	Average weekly hours worked : industry and occupation	19
19.	Married females : industry, occupation and full-time and part-time status	20
20.	Occupational status of full-time and part-time workers	20
21.	Full-time workers who worked less than 35 hours, by reason	20
22.	Part-time workers, whether preferred to work more hours, and whether looking for full-time work, by age	21
23.	Part-time workers, whether preferred to work more hours, and whether looking for full-time work, by hours worked	21
24.	Employment/population ratios by age and marital status	22
Unemployed persons—		
25.	Age : States	22
26.	Age and whether looking for full-time or part-time work	23
27.	Age and birthplace	23
28.	Duration of unemployment and age, etc.	24
29.	Industry and occupation of last full-time job and duration of unemployment	25
30.	Aged 15 to 19 years : duration of unemployment and whether or not attending school	25
31.	Active steps taken to find work, by age	26

CONTENTS—*continued*

<i>Table</i>		<i>Page</i>
PART 1. LABOUR FORCE ESTIMATES—<i>continued</i>		
Persons not in the labour force—		
32.	Age and marital status	26
33.	Whether or not looking for work, etc.	26
Gross flows—		
34.	Estimates, derived from matched records, of employment status in October and November 1981 and gross changes (flows)	27
Technical note—		
	Estimation procedure	28
	Reliability of the estimates	28
Supplementary and special surveys—		
		30
NOTE. Some additional labour force survey data are included in other issues of this publication or are available on request. For details see paragraph 40 of the Explanatory notes.		
PART 2. GOVERNMENT EMPLOYMENT		
	Explanatory notes	32
Government employees (excluding agriculture and services to agriculture)—		
35.	Australia, August 1980 to September 1981	33
36.	States, August 1980 to September 1981	34
37.	Northern Territory, August 1980 to September 1981	36
38.	Australian Capital Territory, August 1980 to September 1981	36
39.	Commonwealth Government employees, September 1981	37
NOTE. Commonwealth Government employment figures, classified by employing body for the months of March, June, September and December are published in the February, May, August and November issues of this publication.		
PART 3. JOB VACANCIES		
40.	Job vacancies, November 1981	39
NOTE. Estimates of job vacancies are published only in the February, May, August and November issues of this publication.		

PART 1. LABOUR FORCE ESTIMATES

EXPLANATORY NOTES

Introduction

This part contains estimates of the civilian labour force derived from the labour force survey part of the population survey, which is now conducted monthly. Until February 1978, surveys were conducted in February, May, August and November each year.

2. A summary of the survey results is published in advance of this more detailed publication in *The Labour Force, Australia (Preliminary)* (6202.0). Preliminary unemployment estimates are also issued in advance of this publication in *Unemployment, Australia, (Preliminary Estimates)* (6201.0).

3. Although emphasis in the labour force survey is placed on the regular collection of data on demographic and labour force characteristics of the population, supplementary and special surveys of particular aspects of the labour force or of other subjects are carried out from time to time. Statistics from these surveys are published and are available free on request. A list of titles is given on pages 30 and 31.

The population survey

4. The population survey is based on a multi-stage area sample of private dwellings (about 30,000 houses, flats, etc.) and non-private dwellings (hotels, motels, etc.), and covers about two-thirds of one per cent of the population of Australia. The information is obtained from the occupants of selected dwellings by carefully chosen and specially trained interviewers. The interviews are generally conducted during the two weeks beginning on the Monday between the 6th and 12th of each month. The information obtained relates to the week before the interview (i.e. the survey week). Because of operational problems arising from the Christmas and New Year holidays the December 1978 and 1979 surveys commenced a week earlier than usual (with most interviews being conducted during the second week) and the January 1979 and 1980 surveys commenced a week later than usual.

Scope

5. The labour force survey includes all persons aged 15 years and over except:

- (a) members of the permanent defence forces;
- (b) certain diplomatic personnel of overseas governments, customarily excluded from census and estimated populations;
- (c) overseas visitors holidaying in Australia; and
- (d) members of non-Australian defence forces (and their dependants) stationed in Australia.

Definitions

6. The labour force category to which a person is assigned depends on his *actual activity* (i.e. whether working, looking for work, etc.) during the survey week. The following definitions, which conform closely to the international standard definitions specified by the International Labour Organisation (ILO), relate only to those persons within the scope of the survey.

7. *Employed persons* comprise all those aged 15 years and over who, during the survey week:

- (a) worked for one hour or more for pay, profit, commission or payment in kind in a job or business, or on a farm (including employees, employers and self-employed persons); or
- (b) worked for 15 hours or more without pay in a family business or on a farm (i.e. unpaid family helpers); or
- (c) were employees who had a job but were not at work and were: on paid leave; on leave without pay for less than four weeks up to the end of the survey week; stood down without pay because of bad weather or plant breakdown at their place of employment for less than four weeks up to the end of the survey week; on strike or locked out; on workers' compensation and expected to be returning to their job; or receiving wages or salary while undertaking full-time study; or
- (d) were employers or self-employed persons who had a job, business or farm, but were not at work.

8. The *employment/population ratio* for any group is the number of employed persons expressed as a percentage of the civilian population aged fifteen years and over in the same group.

9. *Unemployed persons* are those aged 15 years and over who were not employed during the survey week, and

- (a) had actively looked for full-time or part-time work at any time in the four weeks up to the end of the survey week and:
 - (i) were available for work in the survey week, or would have been available except for temporary illness (i.e. lasting for less than four weeks to the end of the survey week); or
 - (ii) were waiting to start a new job within four weeks from the end of the survey week and would have started in the survey week if the job had been available then;
- or (b) were waiting to be called back to a full-time or part-time job from which they had been stood down without pay for less than four weeks up to the end of the survey week (including the whole of the survey week) for reasons other than bad weather or plant breakdown.

10. *Actively looking for work* includes writing, telephoning or applying in person to an employer for work; answering a newspaper advertisement for a job; checking factory or Commonwealth Employment Service noticeboards; being registered with the Commonwealth Employment Service; checking or registering with any other employment agency, advertising or tendering for work; and contacting friends or relatives. In November 1981 a number of minor amendments were made to the labour force survey questionnaire. (For details see the information paper *Questionnaires Used in the Labour Force Survey, December 1981* (6232.0)). The amendments

included changes to Question 57, namely, a re-ordering and some re-wording of the categories of steps taken to find work. Consequently, there is a discontinuity in series in estimates of active steps taken to find work (Table 31) between October and November 1981. The active steps were asked in the order shown in this table, and since only one response was recorded for each person asked this particular question, the estimates do not reflect the relative importance of the steps taken to find work.

11. *Unemployed persons looking for first job* are those who had never worked full-time for two weeks or more. Prior to November 1977 it comprised persons who had never had a job.

12. The *unemployment rate* for any group is the number unemployed expressed as a percentage of the labour force (i.e. employed plus unemployed) in the same group.

13. *Duration of unemployment* is the period from the time the person began looking for work or was laid off to the end of the survey week. Periods of unemployment are recorded in complete weeks and this results in a slight understatement of duration. *Average (mean) duration* is the duration obtained by dividing the aggregate number of weeks a group has been unemployed by the number of persons in that group. *Median duration* is the duration which divides unemployed persons into two equal groups, one comprising persons whose duration of unemployment is above the median and the other, persons whose duration is below it. Medians are calculated from group data, linear interpolation being used within the group which contains the median.

14. *Unemployed persons classified by industry and occupation*. Unemployed persons who had worked full-time for two weeks or more in the last two years are classified according to the industry and occupation of their most recent full-time job.

15. The *labour force* comprises all persons who, during the survey week, were employed or unemployed, as defined in paragraphs 7 and 9.

16. The *labour force participation rate* for any group is the labour force expressed as a percentage of the civilian population aged 15 years and over in the same group. Because it is not practicable to ascertain the birthplace of persons in institutions (who are classified as not in the labour force), labour force participation rates for persons classified by birthplace are calculated by using population estimates which exclude those in institutions.

17. *Full-time workers* are those who usually work 35 hours or more a week and others who, although usually part-time workers, worked 35 hours or more during the survey week. *Part-time workers* are those who usually work less than 35 hours a week and who did so during the survey week. When recording hours of work, fractions of an hour are disregarded.

18. *Hours of work*. The figures of aggregate hours and of average hours refer to actual hours worked during the survey week, not hours paid for. The figures may be affected by public holidays, leave, absenteeism; temporary absence from work due to sickness, injury, accident and industrial disputes; and stoppages of work due to bad

weather, plant breakdown, etc. When hours of work are recorded, fractions of an hour are disregarded and this results in slightly lower figures than would be the case if actual time worked was recorded. Persons stood down for the whole of the survey week without pay because of bad weather or plant breakdown at their place of employment are regarded as employed and therefore are included (working no hours) in the calculation of average hours worked. Persons stood down in the survey week for reasons other than bad weather and plant breakdown and waiting to be called back to their job are regarded as unemployed and are therefore excluded from the calculation.

19. *Persons attending school* comprise those aged 15 to 20 years who, during the survey week, were enrolled full time at secondary or high schools. Excluded are persons who were enrolled at universities, colleges of advanced education, technical colleges, other tertiary education institutions, and coaching and business schools. Persons attending school are classified as in the labour force if they were employed or unemployed as defined in paragraphs 7 and 9. Because it is not practicable to ascertain from persons in institutions (who are classified as not in the labour force) whether or not they are enrolled at secondary or high schools, such persons are excluded from estimates classified by school attendance.

20. *Persons not in the labour force* are those who, during the survey week, were not in the categories 'employed' or 'unemployed', as defined in paragraphs 7 and 9. They include persons who were keeping house (unpaid), attending an educational institution (school, university, etc.), retired, voluntarily inactive, permanently unable to work, inmates of institutions (hospitals, gaols, sanatoria, etc.), trainee teachers, members of contemplative religious orders, and persons whose only activity during the survey week was jury service or unpaid voluntary work for a charitable organisation.

Marital status

21. In the labour force survey, persons are classified as *married* or *not married*. The latter category includes persons who, at the time of the survey, had never married, or were widowed, or divorced.

Occupational status

22. The February, May, August and November issues of this publication include a table showing estimates of employed persons, obtained from the labour force survey, classified by occupational status, i.e. whether they were employers, self-employed persons, wage and salary earners (employees), or unpaid family helpers (who worked 15 hours or more in the survey week).

Classification of industry and occupation

23. Industry is classified according to the *Australian Standard Industrial Classification (ASIC) 1978* (1201.0 and 1202.0) and occupation according to the *Classification and Classified List of Occupations, Revised June 1976*.

State capital cities

24. The areas determining the six State capital cities are the Statistical Divisions for those capital cities defined in *Census of Population and Housing 1976, Population and Dwellings in Local Government Areas and Urban Centres (Preliminary)* (2401.0-2408.0).

Population benchmarks

25. The population survey estimates are calculated in such a way as to conform to the independently estimated distribution of the population aged 15 years and over by age and sex. These independent estimates (benchmarks) are necessarily derived from incomplete information about population changes (deaths, internal and overseas migration) and can differ from estimates of the population subsequently published by the ABS. For estimates of the population and other demographic statistics reference should be made to *Australian Demographic Statistics Quarterly* (3101.0).

Revision of series

26. Survey estimates are not revised for the usually small amendments of population benchmarks arising from new data on deaths and, overseas and internal migration. Revisions are made, however, after each census and when population estimation bases are reviewed. Survey estimates back to August 1966 have been recalculated to conform to revised population estimates. The estimates take account of results of the 1966, 1971 and 1976 population censuses, including estimates of under-enumeration, and incorporate a revised method of measuring overseas migration gain (i.e. by excluding movements of less than one year's duration). For information concerning these population estimates for the period June 1971 to June 1977 see *Population and Vital Statistics, Australia, June Quarter 1977* (3212.0).

27. *The new sample and revised questionnaire.* Survey estimates for February 1978 and subsequent months have been obtained by using a new sample and revised questionnaire. The new sample was selected in order to reflect the changes in the distribution of the population shown by the 1976 Population Census results. The questionnaire, which had undergone little change since 1960, except for the inclusion in 1975 of additional questions on job-seeking, was revised to provide more accurate and more detailed information concerning the labour force.

28. Details of the changes made to the questionnaire and the reasons for the changes are contained in *Information Paper: Questionnaires Used in the Labour Force Survey, March 1978* (6232.0). In November 1981 a number of additional minor amendments were made to the questionnaire (see paragraph 10) and these are outlined in a December 1981 issue of the above information paper, 6232.0.

29. Estimates for the period August 1966 to November 1977 have been revised in order to provide a series for earlier periods as comparable as possible with the February 1978 and later estimates. For periods prior to August 1976, detailed revised estimates are available only for August of each year. For February, May and November only broad revised aggregates (as in Table 1) are available. Revised estimates have been published in *The Labour Force, Australia, 1978* (6204.0), which also contains information concerning the methods used in the revision.

Comparability of series

30. When comparing estimates for February 1978 and subsequent months with those for earlier periods, it should be noted that with the introduction of monthly surveys the interviews are now conducted during a two-

week period, whereas formerly the period was four weeks. This change of timing may affect the level of the figures for any month, but particularly for months during which the employment status of the population may be changing rapidly.

31. Because of the revisions, the estimates in this publication are not comparable with those shown in issues before February 1978 or in the special publications entitled *The Labour Force* (6204.0) covering the period 1964 to 1977.

32. From September 1979, industry estimates in labour force survey publications have been classified according to the 1978 version of the Australian Standard Industrial Classification (ASIC). The estimates are therefore not strictly comparable with those for periods prior to September 1979, which were classified according to the 1969 version of ASIC.

Reliability of the estimates

33. Since the estimates in this section are based on information obtained from occupants of a sample of dwellings they are subject to sampling variability; that is, they may differ from the figures that would have been produced if all dwellings had been included in the survey. An indication of the likely differences is given in the Technical note.

Differences between population census and population survey estimates

34. The results of the 1976 Population Census show that labour force figures derived from the census differ from estimates derived from the population surveys of May and August 1976.

35. The labour force definition used in the population census is similar to that used in the survey. (See paragraphs 6 to 19.) However, evidence from census post-enumeration surveys indicates that the personal interview approach, as used in the population survey, tends to identify a larger number of persons as being in the labour force than does the filling in of the questions on the census schedule by the householder. In addition, the post-enumeration survey following the 1976 Census showed an under-enumeration of the population of 2.71 per cent. It has not been possible to adjust the published census labour force figures for any under-enumeration.

36. In the 1971 and 1976 Censuses the minor occupation group 'Architects, engineers, surveyors, professional' was limited solely to persons holding a university degree. Other persons describing themselves in professional terms but not holding a degree were classified to minor group 'Draftsmen and technicians, n.e.c.'. Information to enable this distinction to be made in the labour force survey is not available.

37. These considerations should be borne in mind if comparisons are made between census and labour force survey estimates.

Seasonal adjustment

38. The move to the higher level of unemployment since 1974 appears to have been accompanied by shifts in the pattern of seasonal variation. For this reason the publication of seasonally adjusted figures of unemployment was suspended as from November 1977. The matter will be kept under review.

39. Seasonally adjusted quarterly estimates of employed persons, the labour force and labour force participation rates are published in the February, May, August and November issues. The seasonally adjusted figures are revised each November. A table of the latest seasonally adjusted estimates is published in this issue. Estimates for earlier periods are published in *Seasonally Adjusted Indicators, Australia, 1981* (1308.0) which also contains information on seasonal adjustment methods, etc. Calculation of seasonally adjusted monthly figures is not yet possible.

Additional tables

40. Labour force estimates for employed persons classified by industry and occupation and for seasonally adjusted series, are available only each quarter. Estimates relating to these characteristics are included in only some issues of this publication, as shown below.

February, May, August and November—

- Average weekly hours worked: Industry and occupation
- Employed persons: Occupational status of full-time and part-time workers
- Employed persons: Industry by occupational status
- Employed married females: Industry and occupation by hours worked
- Seasonally adjusted series

The following estimates are available for February, May, August and November but are published only for the months shown.

February—

- Employed persons—
 - Industry and marital status
 - Industry and birthplace
 - Occupation and marital status
 - Occupation and birthplace

May—

- Employed persons: Occupation—major and minor groups
- Employed persons: Hours worked, by industry

August—

- Employed persons: Industry by occupation

November—

- Employed persons—
 - Industry by full-time and part-time status
 - Occupation by full-time and part-time status
 - Industry by age

Other unpublished data from labour force surveys may be available on request.

41. Estimates of job vacancies are published in the February, May, August and November issues of this publication.

Related publications

42. Users may also wish to refer to the following publications which are available on request:

Unemployment, Australia (Preliminary Estimates) (6201.0)—issued monthly

The Labour Force, Australia (Preliminary) (6202.0)—issued monthly

The Labour Force, Australia, 1980 (6204.0)

Unemployment, Underemployment and Related Statistics, Australia, February 1978 to February 1980 (6236.0)

The Labour Force, New South Wales (6201.1)—issued quarterly

The Labour Force, Victoria (6201.2)—issued monthly

The Labour Force, Queensland (6201.3)—issued quarterly

The Labour Force, South Australia (6201.4)—issued quarterly

Information Paper: Questionnaires used in the Labour Force Survey (6232.0)

Civilian Employees, Australia (6213.0)—latest issue: April 1980

Job Vacancies, Australia (6231.0)—issued quarterly

Overtime, Australia (6330.0)—issued monthly

Information Paper: Review of ABS Employment Statistics (6239.0)

Supplementary and special survey publications are listed on pages 30 and 31.

43. Current publications produced by the ABS are listed in the *Catalogue of Publications, Australia* (1101.0). The ABS also issues, on Tuesdays and Fridays, a *Publications Advice* (1105.0) which lists publications to be released in the next few days. The Catalogue and Publications Advice are available from any ABS office.

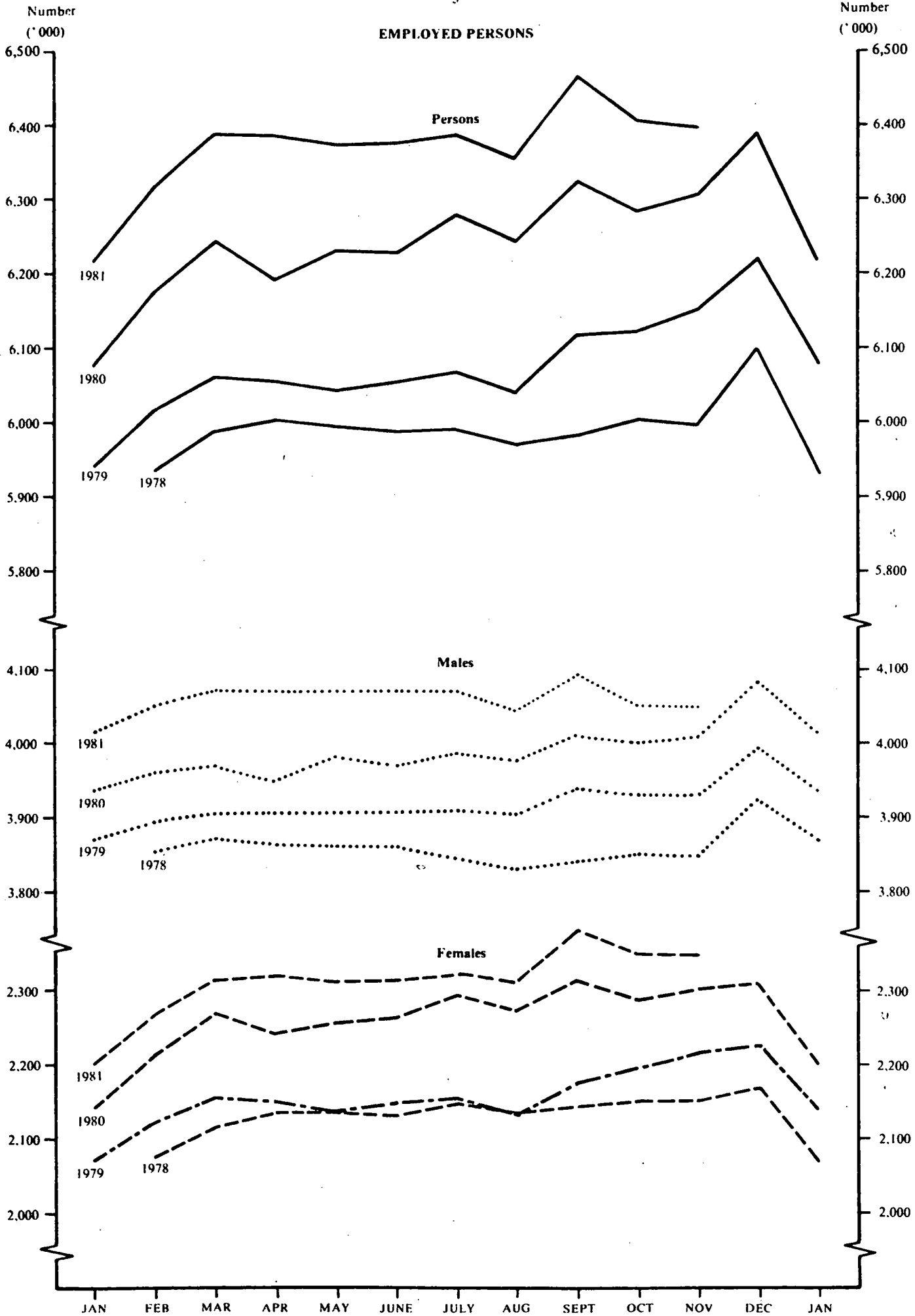
Symbols and other usages

- * subject to sampling variability too high for most practical uses. See paragraph 6 of the Technical note
- n.a. not available
- .. not applicable
- n.e.c. not elsewhere classified
- nil or rounded to zero
- r revised since previous issue

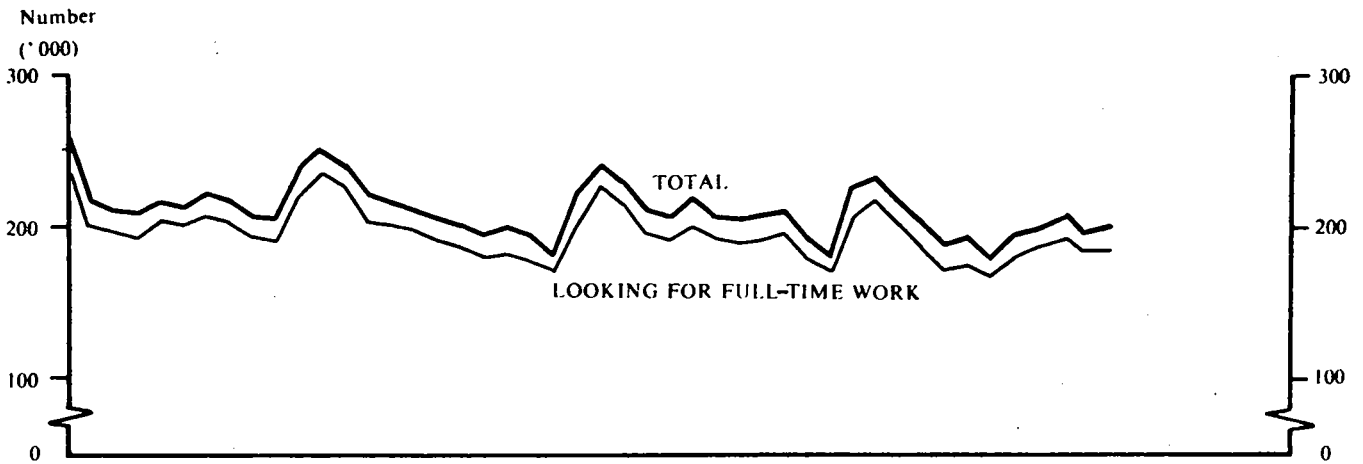
44. Figures have been rounded and discrepancies may occur between sums of the component items and totals.

R. J. CAMERON
Australian Statistician

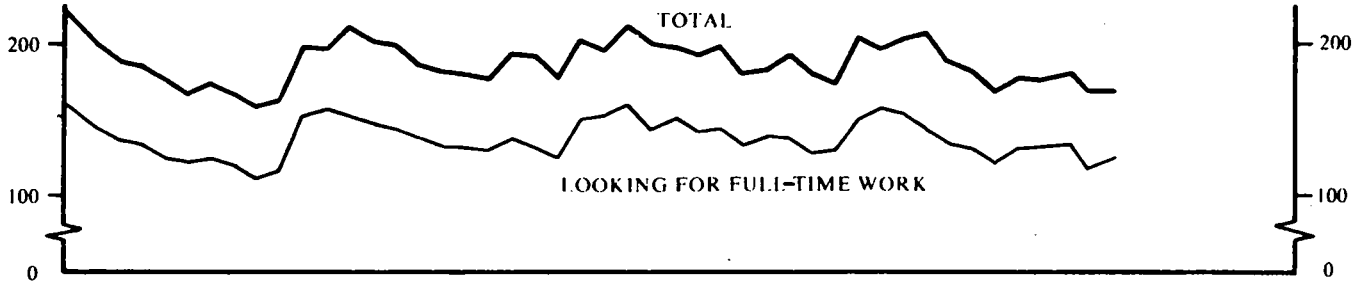
EMPLOYED PERSONS



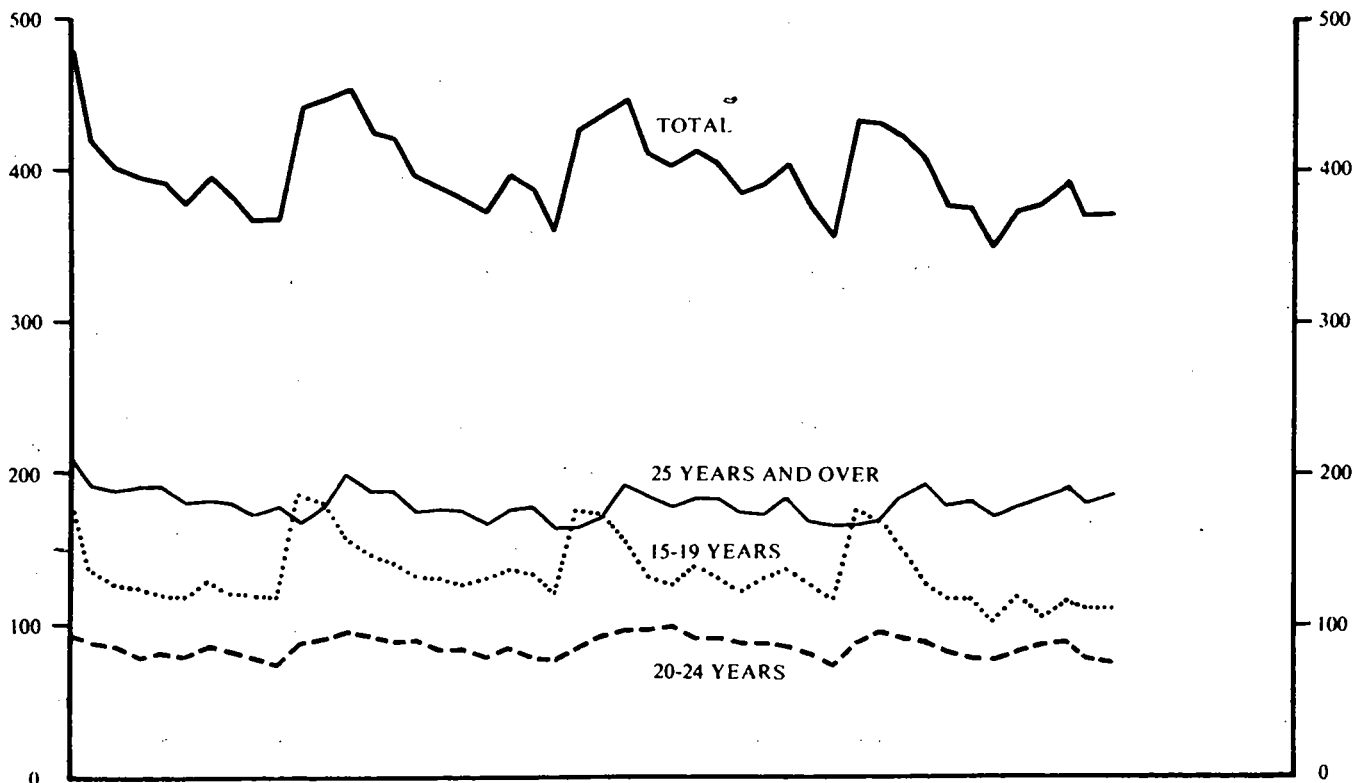
UNEMPLOYED MALES



UNEMPLOYED FEMALES



UNEMPLOYED PERSONS

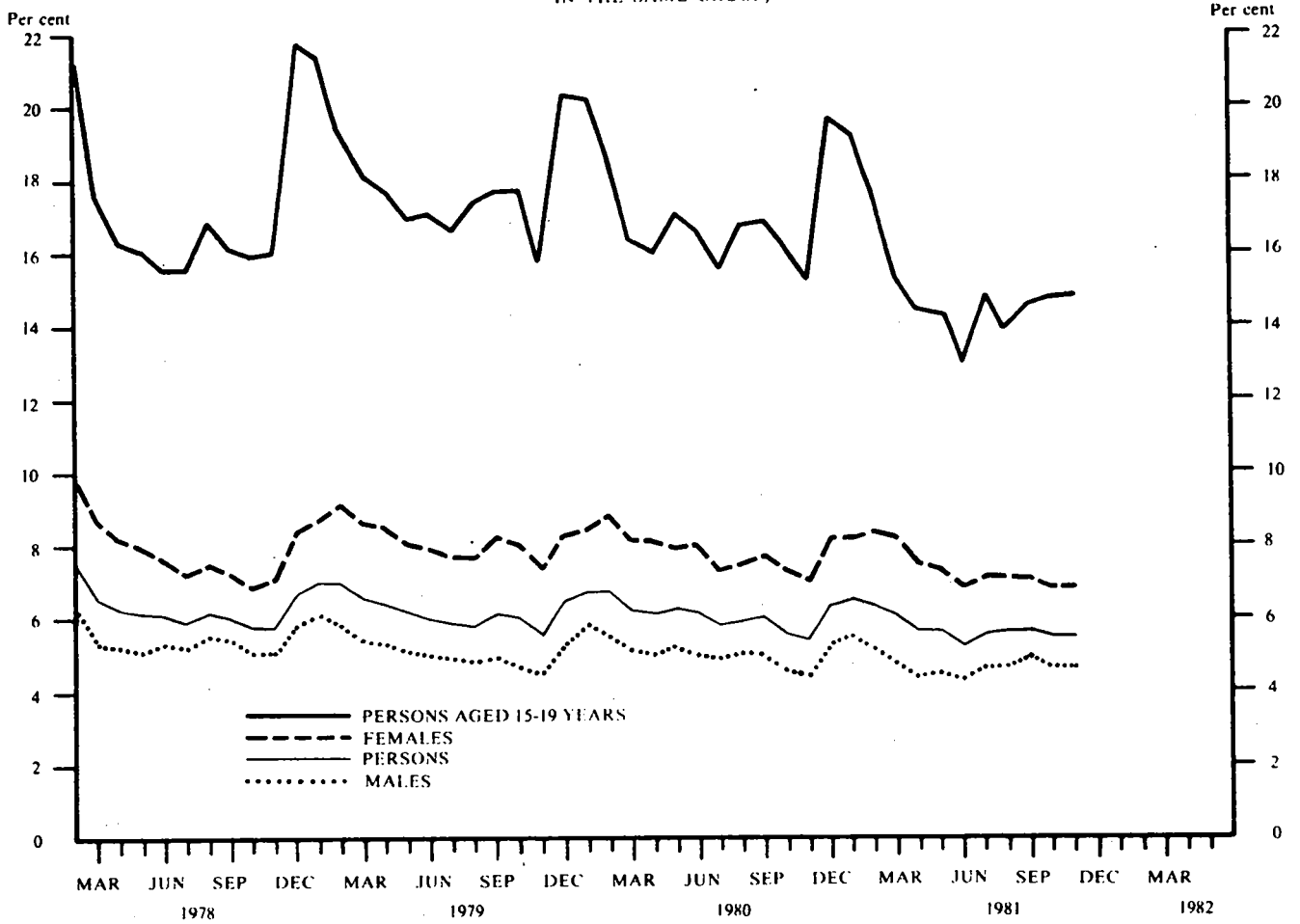


MAR JUN SEP DEC MAR JUN SEP DEC MAR JUN SEP DEC MAR JUN SEP DEC MAR JUN

1970 1970 1980 1981

UNEMPLOYMENT RATES

(THE UNEMPLOYED IN EACH GROUP AS A PERCENTAGE OF THE CIVILIAN LABOUR FORCE IN THE SAME GROUP)



LABOUR FORCE PARTICIPATION RATES

(THE LABOUR FORCE IN EACH GROUP AS A PERCENTAGE OF THE CIVILIAN POPULATION AGED 15 YEARS AND OVER IN THE SAME GROUP)

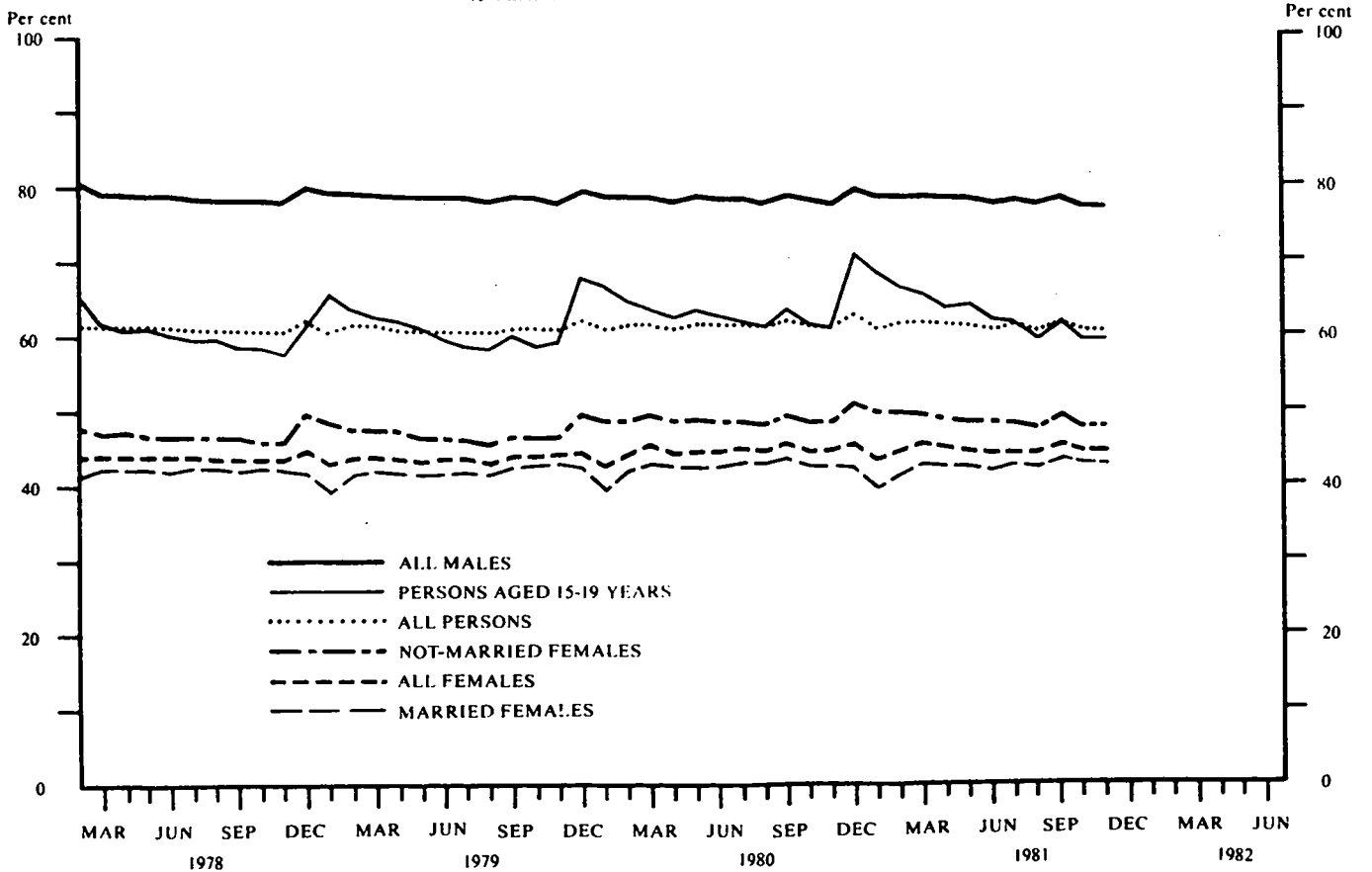


TABLE 1. CIVILIAN POPULATION AGED 15 YEARS AND OVER, BY EMPLOYMENT STATUS(a)

Month	Unemployed										
	Employed		Looking for full-time work		Looking for part-time work		Labour force	Not in labour force	Civilian population aged 15 years and over	Unemployment rate	Participation rate
	Full-time workers	Total	Aged 15-19 years looking for first job	Total	Total	Total					
	— '000 —										
— per cent —											
MALES											
1980—											
October	3,787.7	4,000.8	21.7	180.1	14.7	194.8	4,195.6	1,184.8	5,380.4	4.6	78.0
November	3,780.3	4,006.7	22.4	171.4	11.5	182.8	4,189.6	1,202.5	5,392.1	4.4	77.7
December	3,860.6	4,080.4	43.2	206.1	20.1	226.2	4,306.7	1,096.7	5,403.3	5.3	79.7
1981—											
January	3,823.7	4,017.7	34.4	218.2	15.7	233.9	4,251.6	1,161.4	5,413.0	5.5	78.5
February	3,855.8	4,051.4	29.8	203.6	16.4	220.0	4,271.4	1,149.2	5,420.6	5.2	78.8
March	3,860.4	4,075.7	19.7	185.8	17.5	203.2	4,278.9	1,152.3	5,431.2	4.8	78.8
April	3,854.2	4,068.3	15.6	171.7	16.2	187.9	4,256.2	1,183.1	5,439.3	4.4	78.2
May	3,842.8	4,064.2	15.0	175.5	17.3	192.9	4,257.1	1,190.7	5,447.8	4.5	78.1
June	3,841.3	4,062.8	12.4	169.2	12.3	181.5	4,244.3	1,212.0	5,456.3	4.3	77.8
July	3,853.9	4,065.7	12.5	182.1	14.7	196.8	4,262.5	1,203.3	5,465.7	4.6	78.0
August	3,823.8	4,045.3	12.5	187.0	12.7	199.7	4,245.0	1,230.3	5,475.3	4.7	77.5
September	3,869.2	4,088.0	15.1	194.2	15.3	209.5	4,297.5	1,188.9	5,486.3	4.9	78.3
October	3,829.5	4,049.7	18.0	185.4	14.3	199.7	4,249.4	1,243.7	5,493.1	4.7	77.4
November	3,831.5	4,043.1	18.5	185.6	14.8	200.4	4,243.5	1,263.2	5,506.7	4.7	77.1
Standard error of—											
November 1981 estimates	13.7	13.9	1.9	5.0	1.7	5.1	14.1	9.8	..	0.1	0.3
October 1981 to November 1981 movement	9.6	9.8	1.9	4.2	1.8	4.3	9.9	7.3	..	0.1	0.2
MARRIED FEMALES											
1980—											
October	779.9	1,407.5	*	39.5	34.7	74.2	1,481.7	2,000.1	3,481.8	5.0	42.6
November	780.2	1,419.5	*	42.1	28.4	70.5	1,490.0	1,992.9	3,483.0	4.7	42.8
December	788.9	1,402.9	*	37.6	30.8	68.4	1,471.3	2,017.1	3,488.4	4.7	42.2
1981—											
January	779.3	1,320.9	*	39.5	23.0	62.5	1,383.4	2,121.7	3,505.1	4.5	39.5
February	777.0	1,374.5	*	46.8	32.9	79.8	1,454.2	2,056.7	3,510.9	5.5	41.4
March	776.4	1,417.7	*	45.6	44.5	90.0	1,507.7	2,005.1	3,512.8	6.0	42.9
April	789.8	1,423.8	*	43.9	34.9	78.8	1,502.6	2,015.7	3,518.3	5.2	42.7
May	787.4	1,423.3	*	44.0	34.5	78.4	1,501.7	2,030.2	3,531.9	5.2	42.5
June	779.8	1,411.9	*	39.1	32.8	71.9	1,483.8	2,040.9	3,524.7	4.8	42.1
July	794.8	1,437.4	*	43.3	26.3	69.7	1,507.1	2,029.7	3,536.7	4.6	42.6
August	777.4	1,417.8	*	42.6	30.1	72.7	1,490.5	2,034.1	3,524.6	4.9	42.3
September	807.8	1,453.1	*	43.8	29.5	73.4	1,526.4	1,995.3	3,521.8	4.8	43.3
October	802.8	1,440.2	*	39.6	32.8	72.3	1,512.6	2,002.3	3,514.8	4.8	43.0
November	796.0	1,437.5	*	43.2	30.2	73.4	1,510.9	2,022.8	3,533.6	4.9	42.8
Standard error of—											
November 1981 estimates	8.4	10.2	..	2.8	2.4	3.4	10.4	11.4	..	0.2	0.3
October 1981 to November 1981 movement	6.5	7.5	..	2.6	2.4	3.1	7.6	8.2	..	0.2	0.2

For footnote see end of table.

TABLE 1. CIVILIAN POPULATION AGED 15 YEARS AND OVER, BY EMPLOYMENT STATUS(a)—continued

Month	Employed		Unemployed			Labour force	Not in labour force	Civilian population aged 15 years and over	Unemployment rate	Participation rate	
	Full-time workers	Total	Looking for full-time work		Looking for part-time work						
			Aged 15-19 years looking for first job	Total							
	— '000 —										— per cent —
ALL FEMALES											
1980—											
October	1,473.3	2,285.2	24.1	127.0	53.9	180.9	2,466.1	3,050.6	5,516.7	7.3	44.7
November	1,472.1	2,301.8	21.1	131.3	42.8	174.1	2,476.0	3,052.4	5,528.4	7.0	44.8
December	1,507.8	2,309.1	39.2	151.2	54.5	205.8	2,514.9	3,023.0	5,537.9	8.2	45.4
1981—											
January	1,489.8	2,201.3	43.0	158.7	37.7	196.5	2,397.8	3,151.8	5,549.5	8.2	43.2
February	1,485.2	2,269.3	33.4	154.7	49.4	204.1	2,473.4	3,084.7	5,558.2	8.3	44.5
March	1,479.0	2,314.4	28.4	144.9	61.7	206.6	2,521.0	3,047.6	5,568.6	8.2	45.3
April	1,500.7	2,321.1	25.6	134.8	53.3	188.1	2,509.2	3,067.7	5,576.9	7.5	45.0
May	1,492.2	2,313.0	23.9	132.1	50.5	182.6	2,495.6	3,089.8	5,585.4	7.3	44.7
June	1,497.2	2,316.2	20.6	120.5	48.3	168.7	2,484.9	3,109.1	5,594.0	6.8	44.4
July	1,502.0	2,323.3	23.3	132.8	45.2	178.0	2,501.3	3,102.1	5,603.4	7.1	44.6
August	1,484.7	2,311.0	17.9	133.8	43.5	177.4	2,488.4	3,124.3	5,612.7	7.1	44.3
September	1,539.6	2,378.1	21.2	133.9	47.7	181.6	2,559.7	3,063.6	5,623.3	7.1	45.5
October	1,524.3	2,356.8	19.5	118.7	52.0	170.6	2,527.4	3,102.6	5,630.0	6.8	44.9
November	1,513.4	2,356.4	19.6	125.1	46.4	171.5	2,527.9	3,115.3	5,643.2	6.8	44.8
Standard error of—											
November 1981 estimates	10.4	11.9	2.0	4.3	2.8	4.8	12.1	12.9	..	0.2	0.2
October 1981 to November 1981 movement	7.7	8.6	2.0	3.7	2.8	4.1	8.7	9.2	..	0.2	0.2
PERSONS											
1980—											
October	5,260.9	6,286.0	45.9	307.1	68.6	375.7	6,661.7	4,235.4	10,897.1	5.6	61.1
November	5,252.4	6,308.5	43.5	302.7	54.3	357.0	6,665.5	4,254.9	10,920.5	5.4	61.0
December	5,368.4	6,389.5	82.3	357.4	74.6	432.0	6,821.5	4,119.7	10,941.2	6.3	62.3
1981—											
January	5,313.5	6,219.1	77.4	377.0	53.4	430.4	6,649.4	4,313.2	10,962.6	6.5	60.7
February	5,341.0	6,320.7	63.2	358.4	65.8	424.1	6,744.8	4,233.9	10,978.8	6.3	61.4
March	5,339.4	6,390.1	48.1	330.7	79.2	409.9	6,799.9	4,200.0	10,999.9	6.0	61.8
April	5,354.9	6,389.4	41.2	306.5	69.5	376.0	6,765.4	4,250.8	11,016.2	5.6	61.4
May	5,335.0	6,377.2	38.8	307.7	67.8	375.5	6,752.7	4,280.5	11,033.2	5.6	61.2
June	5,338.5	6,379.0	33.0	289.7	60.6	350.2	6,729.2	4,321.1	11,050.3	5.2	60.9
July	5,355.9	6,388.9	35.8	314.9	59.9	374.8	6,763.8	4,305.4	11,069.2	5.5	61.1
August	5,308.5	6,356.3	30.4	320.9	56.2	377.1	6,733.4	4,354.7	11,088.0	5.6	60.7
September	5,408.8	6,466.1	36.3	328.1	63.0	391.1	6,857.2	4,252.5	11,109.6	5.7	61.7
October	5,353.8	6,406.5	37.4	304.1	66.3	370.4	6,776.9	4,346.3	11,123.1	5.5	60.9
November	5,344.8	6,399.5	38.1	310.7	61.2	371.9	6,771.4	4,378.5	11,149.9	5.5	60.7
Standard error of—											
November 1981 estimates	15.1	15.9	2.6	6.0	3.2	6.4	16.1	14.3	..	0.1	0.1
October 1981 to November 1981 movement	10.4	10.8	2.5	4.9	3.0	5.2	11.0	9.9	..	0.1	0.1

(a) For information on standard errors see Technical note.

TABLE 2. CIVILIAN POPULATION AGED 15 YEARS AND OVER, BY EMPLOYMENT STATUS AND MARITAL STATUS, NOVEMBER 1981

	Employed		Unemployed			Labour force	Not in labour force	Civilian population aged 15 years and over	Unemployment rate	Participation rate
	Full-time workers	Total	Looking for full-time work	Looking for part-time work	Total					
	— '000 —					— per cent —				
Males—										
Married	2,694.5	2,781.9	71.9	*	74.5	2,856.4	692.9	3,549.3	2.6	80.5
Not married	1,136.9	1,261.2	113.8	12.2	125.9	1,387.2	570.2	1,957.4	9.1	70.9
Total	3,831.5	4,043.1	185.6	14.8	200.4	4,243.5	1,263.2	5,506.7	4.7	77.1
Females—										
Married	796.0	1,437.5	43.2	30.2	73.4	1,510.9	2,022.8	3,533.6	4.9	42.8
Not married	717.3	918.9	81.8	16.2	98.1	1,017.0	1,092.5	2,109.5	9.6	48.2
Total	1,513.4	2,356.4	125.1	46.4	171.5	2,527.9	3,115.3	5,643.2	6.8	44.8
Persons	5,344.8	6,399.5	310.7	61.2	371.9	6,771.4	4,378.5	11,149.9	5.5	60.7

TABLE 3. CIVILIAN POPULATION AGED 15 YEARS AND OVER, BY EMPLOYMENT STATUS, STATES AND TERRITORIES, NOVEMBER 1981

State or Territory	Employed		Unemployed			Labour force	Not in labour force	Civilian population aged 15 years and over	Unemployment rate	Participation rate
	Full-time workers	Total	Looking for full-time work	Looking for part-time work	Total					
	— '000 —					— per cent —				
MALES										
N.S.W.	1,347.4	1,418.3	61.8	6.8	68.5	1,486.9	454.3	1,941.2	4.6	76.6
Vic.	1,011.6	1,072.7	45.1	*	47.7	1,120.5	328.9	1,449.3	4.3	77.3
Qld	593.0	628.4	23.6	*	26.4	654.9	208.3	863.1	4.0	75.9
S.A.	335.4	353.1	26.0	*	27.1	380.1	113.2	493.4	7.1	77.1
W.A.	342.8	359.6	18.5	*	19.7	379.3	101.9	481.2	5.2	78.8
Tas.	107.3	112.2	6.5	*	6.6	118.8	37.1	155.9	5.5	76.2
N.T.	34.7	36.1	1.9	*	1.9	38.0	7.1	45.1	5.0	84.2
A.C.T.	59.2	62.6	2.2	*	2.5	65.1	12.4	77.5	3.8	84.0
Australia	3,831.5	4,043.1	185.6	14.8	200.4	4,243.5	1,263.2	5,506.7	4.7	77.1
FEMALES										
N.S.W.	541.9	821.6	41.2	16.1	57.2	878.9	1,121.1	2,000.0	6.5	43.9
Vic.	431.8	641.9	32.7	10.1	42.8	684.8	814.8	1,499.5	6.3	45.7
Qld	214.0	345.9	18.1	7.7	25.8	371.8	505.5	877.2	6.9	42.4
S.A.	123.4	210.9	13.8	4.9	18.7	229.7	275.8	505.4	8.2	45.4
W.A.	118.9	207.3	12.7	3.8	16.5	223.9	252.6	476.5	7.4	47.0
Tas.	37.9	61.3	3.9	1.8	5.7	67.1	95.1	162.2	8.5	41.3
N.T.	15.2	20.9	*	*	2.0	22.9	17.2	40.1	8.8	57.1
A.C.T.	30.2	46.4	*	*	2.6	49.0	33.3	82.3	5.3	59.6
Australia	1,513.4	2,356.4	125.1	46.4	171.5	2,527.9	3,115.3	5,643.2	6.8	44.8
PERSONS										
N.S.W.	1,889.3	2,240.0	103.0	22.8	125.8	2,365.8	1,575.4	3,941.2	5.3	60.0
Vic.	1,443.5	1,714.7	77.8	12.7	90.6	1,805.2	1,143.6	2,948.9	5.0	61.2
Qld	807.0	974.4	41.7	10.5	52.3	1,026.6	713.7	1,740.4	5.1	59.0
S.A.	458.8	564.0	39.9	5.9	45.8	609.8	389.0	998.8	7.5	61.1
W.A.	461.7	566.9	31.3	4.9	36.2	603.1	354.5	957.6	6.0	63.0
Tas.	145.3	173.6	10.4	1.9	12.3	185.9	132.2	318.1	6.6	58.4
N.T.	49.9	57.0	3.1	*	3.9	60.9	24.4	85.2	6.4	71.4
A.C.T.	89.4	109.0	3.5	*	5.1	114.1	45.7	159.8	4.4	71.4
Australia	5,344.8	6,399.5	310.7	61.2	371.9	6,771.4	4,378.5	11,149.9	5.5	60.7

TABLE 4. CIVILIAN POPULATION AGED 15 YEARS AND OVER, BY EMPLOYMENT STATUS, STATE CAPITAL CITIES, NOVEMBER 1981

Capital city	Employed		Unemployed		Total	Labour force	Not in labour force	Civilian population aged 15 years and over	Unemployment rate	Participation rate
	Full-time workers	Total	Looking for full-time work	Looking for part-time work						
— '000 —										
MALES										
Sydney	847.4	897.6	34.2	4.5	38.7	936.3	283.6	1,219.9	4.1	76.8
Melbourne	727.0	765.6	33.5	*	35.2	800.8	232.5	1,033.3	4.4	77.5
Brisbane	264.7	280.8	12.5	*	13.4	294.2	94.9	389.1	4.6	75.6
Adelaide	232.4	245.4	20.3	*	20.9	266.3	87.8	354.2	7.9	75.2
Perth	232.6	245.5	14.1	*	14.8	260.4	74.8	335.2	5.7	77.7
Hobart	41.8	43.4	3.1	*	3.1	46.5	16.7	63.2	6.7	73.6
Total	2,345.8	2,478.4	117.7	8.5	126.2	2,604.6	790.3	3,394.9	4.8	76.7
FEMALES										
Sydney	392.5	576.1	22.7	9.5	32.2	608.2	682.4	1,290.6	5.3	47.1
Melbourne	338.6	482.1	24.3	7.4	31.7	513.8	569.5	1,083.3	6.2	47.4
Brisbane	107.0	168.9	9.2	3.7	12.9	181.8	235.7	417.5	7.1	43.5
Adelaide	94.6	155.9	11.5	4.0	15.5	171.3	203.7	375.0	9.0	45.7
Perth	92.9	156.7	10.4	3.1	13.5	170.1	185.1	355.2	7.9	47.9
Hobart	19.0	27.9	1.7	*	2.5	30.4	37.3	67.6	8.2	44.9
Total	1,044.5	1,567.4	79.7	28.5	108.2	1,675.7	1,913.6	3,589.3	6.5	46.7
PERSONS										
Sydney	1,239.8	1,473.6	56.9	14.0	70.9	1,544.5	966.0	2,510.5	4.6	61.5
Melbourne	1,065.6	1,247.7	57.8	9.1	66.9	1,314.6	802.0	2,116.6	5.1	62.1
Brisbane	371.7	449.7	21.7	4.7	26.4	476.1	330.6	806.6	5.5	59.0
Adelaide	327.0	401.2	31.8	4.6	36.4	437.7	291.5	729.2	8.3	60.0
Perth	325.5	402.2	24.5	3.8	28.3	430.5	259.9	690.4	6.6	62.4
Hobart	60.7	71.3	4.8	*	5.6	76.9	53.9	130.8	7.3	58.8
Total	3,390.3	4,045.8	197.5	37.0	234.4	4,280.2	2,703.9	6,984.2	5.5	61.3

TABLE 5. CIVILIAN POPULATION AGED 15 YEARS AND OVER BY EMPLOYMENT STATUS: AUSTRALIAN CAPITAL TERRITORY, NOVEMBER 1981

	Persons							
	Males	Females		Total	Total	Aged 15-19 years	Aged 20-24 years	Aged 25 years and over
Married	Total							
— '000 —								
Employed	62.6	29.5	46.4	109.0	9.2	13.9	85.9	
Full-time workers	59.2	16.9	30.2	89.4	5.6	11.5	72.2	
Part-time workers	3.5	12.5	16.2	19.6	3.5	2.4	13.7	
Unemployed	2.5	*	2.6	5.1	*	*	2.1	
Looking for full-time work	2.2	*	*	3.5	*	*	*	
Looking for part-time work	*	*	*	*	*	*	*	
Labour force	65.1	30.4	49.0	114.1	10.8	15.3	88.0	
Not in the labour force	12.4	21.3	33.3	45.7	9.4	3.6	32.7	
Aged 15-19 years attending school(a)	3.8	*	4.2	8.0	
Civilian population	77.5	51.7	82.3	159.8	20.2	18.8	120.7	
— per cent —								
Unemployment rate	3.8	*	5.3	4.4	*	*	2.3	
Persons looking for full-time work	3.5	*	*	3.8	*	*	*	
Participation rate	84.0	58.8	59.6	71.4	53.5	81.1	72.9	
Employment/population ratio	80.8	56.9	56.4	68.2	45.3	73.9	71.2	
— number —								
Average weekly hours worked by employed persons	38.4	27.6	27.9	33.9	n.a.	n.a.	n.a.	
Average duration of unemployment (weeks)	41.9	*	23.8	32.6	*	*	30.8	

(a) Excludes persons in institutions. See Explanatory notes, paragraph 19.

TABLE 6. CIVILIAN POPULATION AGED 15 TO 19 YEARS, BY EMPLOYMENT STATUS AND WHETHER OR NOT ATTENDING SCHOOL, NOVEMBER 1981(a)

	Employed		Unemployed			Labour force	Not in labour force	Civilian population	Unemployment rate	Participation rate
	Full-time workers	Total	Looking for full-time work	Looking for part-time work	Total					
— '000 —										
NOT ATTENDING SCHOOL										
Males	276.2	297.3	39.7	*	40.9	338.2	45.4	383.6	12.1	88.2
Females	203.3	241.3	40.6	*	43.2	284.6	73.4	358.0	15.2	79.5
Persons	479.4	538.7	80.4	*	84.1	622.8	118.8	741.6	13.5	84.0
Left school—										
Before 1980	292.6	320.7	39.3	*	40.5	361.2	58.6	419.8	11.2	86.0
1980	151.8	174.9	29.9	*	32.2	207.1	47.2	254.3	15.6	81.4
1981 to survey date	35.1	43.1	11.1	*	11.4	54.5	13.0	67.5	20.9	80.7
Age (years)—										
15	12.2	14.7	4.7	*	4.7	19.4	*	22.8	24.2	85.0
16	52.6	58.0	14.0	*	14.1	72.1	10.3	82.4	19.5	87.5
17	101.6	112.2	19.2	*	19.5	131.7	20.2	151.9	14.8	86.7
18	147.4	167.0	20.0	*	22.1	189.0	37.9	226.9	11.7	83.3
19	165.6	186.8	22.5	*	23.8	210.6	46.9	257.6	11.3	81.8
ATTENDING SCHOOL										
Males	*	45.8	7.0	8.2	15.2	61.0	202.3	263.3	24.9	23.2
Females	*	57.9	5.2	7.7	12.9	70.8	191.8	262.5	18.2	27.0
Persons	*	103.6	12.2	16.0	28.1	131.8	394.1	525.9	21.3	25.1
Age (years)—										
15	*	39.7	*	9.4	12.5	52.2	171.7	223.9	23.9	23.3
16	*	34.5	6.0	4.6	10.6	45.1	120.8	165.9	23.5	27.2
17	*	23.5	*	*	5.1	27.3	72.4	99.7	14.7	27.4
18 and 19	*	5.9	*	*		7.2	29.2	36.4		19.7
TOTAL										
Males	277.1	343.1	46.7	9.4	56.1	399.2	247.7	646.9	14.1	61.7
Females	203.7	299.2	45.8	10.4	56.1	355.3	265.2	620.5	15.8	57.3
Persons	480.8	642.3	92.5	19.8	112.3	754.6	512.8	1,267.4	14.9	59.5
Age (years)—										
15	12.9	54.4	7.7	9.4	17.2	71.6	175.1	246.7	24.0	29.0
16	52.6	92.5	20.0	4.7	24.7	117.2	131.1	248.3	21.1	47.2
17	102.0	135.7	21.2	5.7	23.3	159.0	92.6	251.6	14.7	63.2
18	147.6	172.6	21.1		23.3	195.9	63.0	258.9	11.9	75.7
19	165.6	187.1	22.5	23.8	210.9	51.0	261.9	11.3	80.5	

(a) For information on duration of unemployment, see Table 30. Excludes persons in institutions. See Explanatory notes, paragraph 19.

TABLE 7. CIVILIAN POPULATION AGED 20 TO 24 YEARS, BY EMPLOYMENT STATUS, NOVEMBER 1981

	Employed		Unemployed			Labour force	Not in labour force	Civilian population	Unemployment rate	Participation rate
	Full-time workers	Total	Looking for full-time work	Looking for part-time work	Total					
— '000 —										
— per cent —										
Males	507.9	539.9	38.5	*	39.7	579.6	67.5	647.1	6.9	89.6
Females	338.4	408.9	30.2	*	34.6	443.5	191.4	634.9	7.8	69.9
Persons	846.3	948.8	68.7	5.6	74.3	1,023.1	258.9	1,282.0	7.3	79.8
Age (years)—										
20	171.4	194.5	15.8	5.1	17.3	211.8	52.5	264.3	8.2	80.1
21	162.8	186.1	18.2		19.8	205.8	55.0	260.8	9.6	78.9
22	172.7	193.4	11.3		12.2	205.6	51.2	256.8	5.9	80.1
23	168.7	187.5	14.2		15.4	202.9	50.3	253.2	7.6	80.1
24	170.8	187.3	9.1	*	9.6	196.9	49.9	246.9	4.9	79.8

TABLE 8. SEASONALLY ADJUSTED SERIES(a)

Month	Males		Married females		All females		Persons	
	Original	Seasonally adjusted	Original	Seasonally adjusted	Original	Seasonally adjusted	Original	Seasonally adjusted
EMPLOYED (' 000)								
1976—August(b)	3,836.3	3,850.6	1,337.8	1,341.6	2,061.5	2,071.5	5,897.8	5,926.7
November	3,866.0	3,872.0	1,361.6	1,344.2	2,089.0	2,070.5	5,955.0	5,942.5
1977—February	3,890.2	3,882.2	1,355.5	1,370.6	2,095.1	2,107.0	5,985.2	5,987.4
May	3,891.5	3,878.7	1,382.0	1,380.6	2,132.7	2,129.5	6,024.2	6,005.8
August	3,866.8	3,881.7	1,374.5	1,377.3	2,128.6	2,137.2	5,995.4	6,022.9
November	3,867.3	3,873.7	1,368.9	1,352.5	2,128.2	2,110.5	5,995.4	5,984.1
1978—February(c)	3,857.4	3,848.4	1,320.9	1,337.0	2,074.8	2,088.0	5,932.3	5,934.7
May	3,863.5	3,851.4	1,356.5	1,353.8	2,135.3	2,131.8	5,998.7	5,981.8
August	3,832.3	3,847.1	1,357.7	1,359.5	2,137.2	2,144.0	5,969.6	5,994.2
November	3,846.1	3,852.7	1,373.4	1,357.4	2,151.2	2,133.9	5,997.3	5,986.8
1979—February	3,893.6	3,883.8	1,346.1	1,364.2	2,125.4	2,140.1	6,018.9	6,021.7
May	3,908.3	3,896.2	1,356.3	1,352.6	2,135.0	2,131.7	6,043.3	6,027.7
August	3,904.5	3,920.1	1,347.2	1,348.3	2,136.9	2,142.5	6,041.5	6,064.4
November	3,931.2	3,938.0	1,408.5	1,392.2	2,219.4	2,201.4	6,150.6	6,139.9
1980—February	3,960.1	3,949.5	1,370.7	1,390.7	2,213.9	2,229.7	6,174.1	6,177.0
May	3,981.2	3,969.2	1,394.7	1,389.9	2,256.6	2,253.4	6,237.8	6,223.1
August	3,970.9	3,986.8	1,412.4	1,413.6	2,275.8	2,281.8	6,246.7	6,269.6
November	4,006.7	4,013.8	1,419.5	1,402.7	2,301.8	2,282.4	6,308.5	6,297.0
1981—February	4,051.4	4,040.2	1,374.5	1,395.0	2,269.3	2,285.8	6,320.7	6,323.7
May	4,064.2	4,052.1	1,423.3	1,418.2	2,313.0	2,310.0	6,377.2	6,362.6
August	4,045.3	4,061.7	1,417.8	1,419.1	2,311.0	2,317.5	6,356.3	6,380.0
November	4,043.1	4,050.3	1,437.5	1,420.4	2,356.4	2,336.1	6,399.5	6,387.6
LABOUR FORCE (' 000)								
1976—August(b)	3,992.9	4,015.3	1,400.9	1,407.0	2,197.6	2,217.0	6,190.5	6,231.1
November	4,021.2	4,037.8	1,412.9	1,403.4	2,215.3	2,210.2	6,236.5	6,244.5
1977—February	4,076.2	4,045.8	1,438.3	1,440.9	2,281.3	2,267.5	6,357.5	6,315.4
May	4,076.2	4,066.5	1,456.6	1,457.3	2,301.8	2,300.8	6,378.0	6,369.0
August	4,056.9	4,079.2	1,451.2	1,455.9	2,297.8	2,315.1	6,354.7	6,394.4
November	4,050.4	4,070.5	1,436.6	1,428.8	2,291.9	2,289.8	6,342.2	6,356.6
1978—February(c)	4,112.4	4,079.7	1,413.6	1,417.5	2,296.9	2,285.0	6,409.3	6,366.5
May	4,072.6	4,062.8	1,440.4	1,439.5	2,321.4	2,318.8	6,394.0	6,382.7
August	4,053.8	4,074.6	1,434.9	1,438.6	2,311.5	2,326.6	6,365.3	6,402.0
November	4,052.4	4,075.7	1,436.8	1,429.8	2,314.6	2,313.5	6,367.0	6,385.8
1979—February	4,135.4	4,100.9	1,431.8	1,437.4	2,337.5	2,327.9	6,472.9	6,430.1
May	4,118.9	4,109.0	1,428.5	1,426.2	2,321.0	2,317.2	6,439.9	6,427.3
August	4,100.7	4,120.5	1,420.8	1,424.2	2,314.6	2,328.6	6,415.3	6,450.1
November	4,115.0	4,140.9	1,485.0	1,477.6	2,396.2	2,394.7	6,511.2	6,532.6
1980—February	4,190.6	4,154.5	1,453.3	1,462.2	2,428.0	2,419.4	6,618.6	6,574.8
May	4,201.1	4,191.3	1,468.2	1,464.8	2,450.3	2,446.0	6,651.4	6,638.4
August	4,180.0	4,199.4	1,482.1	1,486.2	2,459.0	2,474.1	6,639.0	6,674.6
November	4,189.6	4,217.1	1,490.0	1,482.0	2,476.0	2,473.3	6,665.5	6,687.1
1981—February	4,271.4	4,234.2	1,454.2	1,461.4	2,473.4	2,465.3	6,744.8	6,700.6
May	4,257.1	4,246.9	1,501.7	1,498.3	2,495.6	2,491.4	6,752.7	6,739.3
August	4,245.0	4,264.9	1,490.5	1,494.9	2,488.4	2,504.0	6,733.4	6,770.0
November	4,243.5	4,271.9	1,510.9	1,502.5	2,527.9	2,524.5	6,771.4	6,793.2
PARTICIPATION RATE (per cent)								
1976—August(b)	80.0	80.4	41.5	41.6	43.0	43.4	61.3	61.7
November	80.2	80.5	41.8	41.5	43.2	43.1	61.5	61.6
1977—February	80.9	80.3	42.3	42.4	44.3	44.0	62.4	62.0
May	80.5	80.4	42.8	42.8	44.4	44.4	62.3	62.2
August	79.8	80.2	42.6	42.7	44.2	44.5	61.8	62.1
November	79.3	79.7	42.3	42.0	43.8	43.8	61.4	61.5
1978—February(c)	80.1	79.5	41.5	41.7	43.7	43.5	61.7	61.3
May	78.9	78.8	42.4	42.4	43.9	43.9	61.2	61.1
August	78.3	78.6	42.1	42.1	43.5	43.8	60.7	61.0
November	77.9	78.4	42.0	41.7	43.4	43.4	60.5	60.6
1979—February	79.1	78.5	41.4	41.7	43.6	43.5	61.2	60.8
May	78.4	78.3	41.2	41.2	43.1	43.1	60.6	60.5
August	77.8	78.2	41.3	41.3	42.9	43.1	60.1	60.4
November	77.8	78.2	42.8	42.6	44.2	44.1	60.7	60.9
1980—February	78.8	78.1	42.0	42.3	44.5	44.4	61.4	61.0
May	78.6	78.5	42.4	42.4	44.7	44.7	61.5	61.4
August	77.9	78.3	42.8	42.8	44.7	45.0	61.1	61.4
November	77.7	78.2	42.8	42.5	44.8	44.7	61.0	61.2
1981—February	78.8	78.1	41.4	41.7	44.5	44.4	61.4	61.0
May	78.1	78.0	42.5	42.5	44.7	44.6	61.2	61.1
August	77.5	77.9	42.3	42.3	44.3	44.6	60.7	61.1
November	77.1	77.5	42.8	42.4	44.8	44.7	60.7	60.9

(a) The methods used to seasonally adjust these figures are explained in *Seasonally Adjusted Indicators, Australia 1981* (1308.0). The seasonally adjusted estimates shown in this table have been revised since previous issues. See also Explanatory notes, paragraphs 38 and 39. (b) Affected by industrial disputes. (c) First of monthly series. For information on the change in timing of the survey see Explanatory notes, paragraph 30.

TABLE 9. CIVILIAN LABOUR FORCE, BY EMPLOYMENT STATUS AND BIRTHPLACE, NOVEMBER 1981

	Employed		Unemployed		Labour force	Unemployment rate	Participation rate(a)
	Full-time	Total	Looking for full-time work	Total			
— '000—							
— per cent —							
MALES							
Born in Australia	2,764.4	2,927.1	126.2	136.7	3,063.9	4.5	77.5
Born outside Australia	1,067.1	1,116.0	59.4	63.7	1,179.7	5.4	79.2
Africa	29.0	30.5	•	•	32.4	•	80.2
America	33.2	35.7	•	•	38.0	•	83.3
Asia	108.3	115.9	9.8	10.7	126.6	8.5	77.0
Lebanon	13.9	14.9	•	•	17.5	•	78.9
Europe	836.4	869.5	42.8	45.1	914.6	4.9	78.9
Germany, Fed. Rep.	38.7	39.2	•	•	40.9	•	82.9
Greece	59.2	60.5	5.2	5.2	65.7	7.9	82.3
Italy	115.6	121.5	•	•	125.7	•	81.0
Malta	22.8	23.3	•	•	25.0	•	82.0
Netherlands	41.5	43.2	•	•	45.5	•	82.4
Poland	19.0	19.9	•	•	20.7	•	67.2
U.K. and Ireland	389.2	405.7	20.3	21.5	427.2	5.0	77.6
Yugoslavia	71.8	73.7	•	•	77.1	•	81.5
Oceania	60.2	64.3	•	•	68.0	•	85.3
New Zealand	53.0	56.1	•	•	59.5	•	86.4
MARRIED FEMALES							
Born in Australia	520.5	1,008.2	23.2	43.4	1,051.6	4.1	41.5
Born outside Australia	275.5	429.3	20.1	30.0	459.3	6.5	46.4
Africa	9.4	13.0	•	•	13.6	•	49.3
America	9.9	13.8	•	•	15.4	•	58.6
Asia	34.5	46.0	•	5.0	51.0	9.8	47.2
Lebanon	•	•	•	•	4.9	•	32.8
Europe	207.8	333.9	13.8	21.3	355.2	6.0	45.4
Germany, Fed. Rep.	7.0	15.5	•	•	16.3	•	41.3
Greece	20.4	28.9	•	•	31.4	•	48.1
Italy	23.7	37.7	•	•	39.1	•	39.2
Malta	4.7	8.1	•	•	8.7	•	46.5
Netherlands	6.0	12.4	•	•	12.8	•	35.6
Poland	5.9	9.0	•	•	9.8	•	47.6
U.K. and Ireland	92.6	161.0	6.8	10.9	171.9	6.3	46.4
Yugoslavia	28.6	33.6	•	•	35.8	•	59.5
Oceania	13.9	22.7	•	•	24.1	•	53.1
New Zealand	11.5	20.2	•	•	21.7	•	55.7
ALL FEMALES							
Born in Australia	1,106.8	1,762.7	86.2	120.4	1,883.1	6.4	45.1
Born outside Australia	406.6	593.7	38.8	51.1	644.9	7.9	46.6
Africa	13.2	17.6	•	•	19.2	•	49.4
America	13.9	19.6	•	•	22.6	•	56.7
Asia	60.4	76.2	6.4	8.4	84.6	9.9	51.4
Lebanon	•	5.1	•	•	7.2	•	38.4
Europe	293.4	442.2	25.2	34.4	476.6	7.2	44.7
Germany, Fed. Rep.	12.1	21.7	•	•	22.5	•	42.1
Greece	23.1	32.2	•	•	36.5	•	45.1
Italy	28.5	43.7	•	•	45.9	•	38.5
Malta	6.6	10.1	•	•	10.8	•	48.7
Netherlands	8.6	15.8	•	•	16.5	•	36.9
Poland	6.6	10.2	•	•	11.3	•	41.4
U.K. and Ireland	147.8	231.1	13.6	18.5	249.5	7.4	46.0
Yugoslavia	32.8	38.9	•	•	42.5	•	56.3
Oceania	25.7	38.1	•	•	41.8	•	56.2
New Zealand	22.1	34.0	•	•	37.3	•	58.9
PERSONS							
Born in Australia	3,871.2	4,689.8	212.5	257.1	4,946.9	5.2	60.9
Born outside Australia	1,473.7	1,709.7	98.2	114.8	1,824.5	6.3	63.5
Africa	42.2	48.1	•	•	51.6	•	65.1
America	47.1	55.3	•	5.4	60.7	8.8	70.9
Asia	168.7	192.1	16.2	19.1	211.2	9.1	64.2
Lebanon	17.8	20.0	•	4.6	24.6	18.8	60.4
Europe	1,129.8	1,311.7	68.0	79.6	1,391.3	5.7	62.5
Germany, Fed. Rep.	50.9	60.9	•	•	63.3	•	61.7
Greece	82.3	92.7	8.5	9.5	102.2	9.3	63.5
Italy	144.1	165.2	5.4	6.4	171.5	3.7	62.5
Malta	29.4	33.4	•	•	35.8	•	68.0
Netherlands	50.1	59.0	•	•	62.0	•	62.1
Poland	25.6	30.1	•	•	32.0	•	55.0
U.K. and Ireland	537.0	636.8	33.9	40.0	676.7	5.9	61.9
Yugoslavia	104.6	112.7	5.9	7.0	119.6	5.8	70.3
Oceania	86.0	102.5	7.0	7.3	109.8	6.7	71.3
New Zealand	75.1	90.2	6.4	6.7	96.8	6.9	73.2

(a) Excludes persons in institutions. See Explanatory notes, paragraph 16.

TABLE 10. CIVILIAN LABOUR FORCE, BORN OUTSIDE AUSTRALIA, BY EMPLOYMENT STATUS, AND PERIOD OF ARRIVAL IN AUSTRALIA, NOVEMBER 1981

Period of arrival								Total			
	Africa	America	Asia	Europe		Oceania		Females			Persons
				U.K. and Ireland	Other countries	New Zealand	Total	Males	Married	Total	
EMPLOYED ('000)											
Before 1961	10.4	4.8	30.3	184.1	353.4	9.1	12.7	417.9	145.2	177.7	595.6
1961-1965	6.8	*	18.3	113.8	99.0	6.2	7.7	159.9	62.7	89.5	249.4
1966-1970	12.5	9.2	34.1	160.7	129.3	11.8	12.6	228.9	90.8	129.5	358.3
1971-1979	14.6	31.7	91.9	149.7	78.8	40.6	45.7	249.7	109.7	162.8	412.5
1980 to survey date	*	5.8	17.6	28.5	14.3	22.5	23.7	59.5	20.9	34.3	93.8
UNEMPLOYED ('000)											
Before 1961	*	} 4.8 {	} 5.9 {	7.0	13.5	*	*	13.9	6.9	8.6	22.5
1961-1965	*			6.3	7.3	*	*	9.7	*	5.7	15.4
1966-1970	*			12.3	9.8	*	*	13.8	6.9	14.2	28.0
1971-1979	*			8.3	11.0	7.6	*	19.2	8.4	15.2	34.4
1980 to survey date	*	*	4.9	*	*	*	*	7.0	4.7	7.5	14.5
LABOUR FORCE ('000)											
Before 1961	10.6	4.9	31.7	191.0	366.9	9.3	13.0	431.9	152.1	186.3	618.2
1961-1965	7.4	*	18.9	120.1	106.4	6.5	8.1	169.7	65.9	95.2	264.9
1966-1970	13.4	9.8	37.9	173.0	139.1	12.4	13.2	242.7	97.8	143.6	386.3
1971-1979	15.3	35.6	100.2	160.7	86.4	43.3	48.7	268.9	118.0	177.9	446.9
1980 to survey date	5.0	6.4	22.5	31.9	15.7	25.4	26.9	66.5	25.6	41.8	108.3
UNEMPLOYMENT RATE (per cent)											
Before 1961	*	} 8.8 {	} 6.7 {	3.7	3.7	*	*	3.2	4.6	4.6	3.6
1961-1965	*			5.2	6.9	*	*	5.7	*	6.0	5.8
1966-1970	*			7.1	7.1	*	*	5.7	7.1	9.9	7.2
1971-1979	*			6.9	8.8	*	*	7.2	7.1	8.5	7.7
1980 to survey date	*	*	21.8	*	*	*	*	10.5	18.3	18.0	13.4
PARTICIPATION RATE (per cent)(a)											
Before 1961	53.0	53.2	58.6	45.1	58.7	38.2	43.0	70.4	37.4	33.9	53.2
1961-1965	61.5	*	77.5	69.3	67.0	73.5	75.1	86.6	46.1	50.4	68.8
1966-1970	64.2	75.7	73.4	73.5	72.3	78.1	75.0	86.2	56.0	57.7	72.8
1971-1979	76.0	74.6	65.6	75.1	66.6	79.6	76.4	85.6	55.6	56.7	71.2
1980 to survey date	78.2	62.5	48.9	68.6	59.3	87.9	84.4	77.9	47.8	51.0	64.7

(a) Excludes persons in institutions. See Explanatory notes, paragraph 16.

TABLE 11. CIVILIAN LABOUR FORCE, BY AGE, NOVEMBER 1981

Age group (years)	Number (' 000)					Participation rate (per cent)				
	Females					Females				
	Males	Married	Not married	Total	Persons	Males	Married	Not married	Total	Persons
15-64	4,184.3	1,501.5	1,004.0	2,505.4	6,689.7	85.5	46.8	63.3	52.2	69.0
15-19	399.2	12.6	342.7	355.3	754.6	61.5	47.2	57.6	57.2	59.4
20-24	579.6	151.7	291.8	443.5	1,023.1	89.6	53.7	82.8	69.9	79.8
25-34	1,135.0	467.1	176.1	643.2	1,778.2	95.3	48.1	78.1	53.7	74.5
35-44	912.0	463.0	82.2	545.2	1,457.2	95.2	58.2	68.9	59.6	77.8
45-54	706.7	308.1	62.1	370.2	1,076.9	90.9	49.0	56.5	50.1	71.0
55-59	300.7	76.2	32.4	108.6	409.4	80.7	26.7	38.0	29.3	55.0
60-64	151.1	22.8	16.6	39.3	190.4	50.5	10.3	16.7	12.3	30.8
65 and over	59.2	9.4	13.1	22.5	81.7	9.7	2.9	2.5	2.7	5.6
Total	4,243.5	1,510.9	1,017.0	2,527.9	6,771.4	77.1	42.8	48.2	44.8	60.7

TABLE 12. LABOUR FORCE PARTICIPATION RATES, BY AGE AND BIRTHPLACE, NOVEMBER 1981(a) (per cent)

Age group (years)	Born in Australia			Born outside Australia		
	Males	Females	Persons	Males	Females	Persons
15-64	85.5	52.1	68.7	87.5	53.3	71.3
15-19	62.2	57.4	59.9	58.8	56.3	57.6
20-24	91.0	70.6	80.9	86.9	68.3	77.6
25-34	96.0	53.2	74.5	95.6	55.7	75.5
35-44	96.2	58.1	77.1	94.5	63.5	80.1
45-54	92.1	49.3	70.1	91.1	52.7	74.3
55-59	80.4	28.8	54.1	84.2	30.9	58.7
60-64	47.8	12.7	28.9	59.1	11.7	37.3
65 and over	10.8	3.1	6.3	8.5	*	5.2
Total	77.5	45.1	60.9	79.2	46.6	63.5

(a) Excludes persons in institutions. See Explanatory notes, paragraph 16.

TABLE 13. EMPLOYED PERSONS : FULL-TIME AND PART-TIME STATUS, BY AGE, NOVEMBER 1981 (' 000)

	Age group (years)								
	15-19	20-24	25-34	35-44	45-54	55-59	60-64	65 and over	Total
MALES									
Full-time workers	277.1	507.9	1,058.4	868.2	669.7	278.8	131.4	39.8	3,831.5
Part-time workers	66.0	32.0	31.2	19.7	18.9	11.5	13.7	18.6	211.6
Total	343.1	539.9	1,089.7	887.9	688.7	290.4	145.1	58.4	4,043.1
MARRIED FEMALES									
Full-time workers	9.1	109.9	241.6	223.4	158.7	40.3	9.4	*	796.0
Part-time workers	*	32.3	195.7	220.3	138.4	34.3	12.8	5.7	641.4
Total	11.1	142.2	437.3	443.7	297.0	74.6	22.2	9.3	1,437.5
ALL FEMALES									
Full-time workers	203.7	338.4	387.2	284.3	206.5	64.4	19.2	9.6	1,513.4
Part-time workers	95.5	70.5	216.6	236.5	150.5	41.6	19.3	12.5	843.0
Total	299.2	408.9	603.8	520.8	357.0	106.0	38.5	22.1	2,356.4
PERSONS									
Full-time workers	480.8	846.3	1,445.7	1,152.6	876.3	343.2	150.6	49.4	5,344.8
Part-time workers	161.5	102.5	247.8	256.2	169.4	53.1	33.0	31.2	1,054.7
Total	642.3	948.8	1,693.5	1,408.7	1,045.7	396.4	183.6	80.6	6,399.5

TABLE 14. EMPLOYED PERSONS : INDUSTRY, OCCUPATION AND FULL-TIME AND PART-TIME STATUS, NOVEMBER 1981
(' 000)

	Full-time workers			Part-time workers			Total Persons
	Males	Females	Persons	Males	Females	Persons	
INDUSTRY							
Agriculture and services to agriculture	262.7	47.3	310.0	19.0	50.1	69.1	379.1
Forestry and logging, fishing and hunting	19.8	*	21.0	*	*	*	23.7
Mining	86.8	7.8	94.6	*	*	*	97.3
Manufacturing	911.2	269.3	1,180.5	19.8	59.0	78.8	1,259.3
Food, beverages and tobacco	122.3	43.3	165.6	*	9.3	13.3	178.9
Metal products	199.0	23.6	222.6	*	4.8	7.2	229.8
Other manufacturing	589.9	202.4	792.3	13.3	44.9	58.2	850.5
Construction	404.0	17.3	421.3	18.8	30.7	49.5	470.8
Wholesale and retail trade	666.2	323.4	989.6	58.3	242.6	300.9	1,290.5
Transport and storage	286.9	34.9	321.7	12.6	14.6	27.2	348.9
Finance, property and business services	287.3	176.1	463.4	17.9	65.1	83.0	546.4
Community services	354.5	413.5	768.0	27.6	233.5	261.1	1,029.1
Recreation, personal and other services	145.6	101.0	246.6	29.8	121.1	150.9	397.5
Other industries	406.5	121.5	528.0	5.6	23.2	28.8	556.8
Total employed	3,831.5	1,513.4	5,344.8	211.6	843.0	1,054.7	6,399.5
OCCUPATION							
Professional, technical, etc.	487.4	297.0	784.4	29.6	126.5	156.2	940.6
Administrative, executive and managerial	345.7	44.3	390.0	7.8	15.4	23.2	413.2
Clerical	309.9	559.3	869.2	7.3	227.8	235.1	1,104.3
Sales	236.5	166.8	403.3	31.8	148.5	180.3	583.5
Farmers, fishermen, timber-getters, etc.	322.5	46.4	368.9	28.9	50.5	79.5	448.3
Transport and communication	275.6	30.8	306.4	14.1	16.3	30.5	336.9
Tradesmen, production-process workers and labourers, n.e.c.; and miners, quarrymen, etc.	1,659.0	208.6	1,867.5	64.4	47.6	112.0	1,979.5
Service, sport and recreation	194.9	160.3	355.2	27.7	210.3	238.0	593.2
Total employed	3,831.5	1,513.4	5,344.8	211.6	843.0	1,054.7	6,399.5

TABLE 15. EMPLOYED PERSONS : INDUSTRY AND AGE, NOVEMBER 1981
(' 000)

Industry division or subdivision	Age group (years)						Total
	15-19	20-24	25-34	35-44	45-54	55 and over	
Agriculture and services to agriculture	29.6	37.2	83.8	81.7	70.5	76.3	379.1
Mining	5.2	15.5	34.5	20.5	14.1	7.6	97.3
Manufacturing	121.8	202.6	300.9	260.6	228.1	145.2	1,259.3
Construction	41.9	63.9	138.0	120.8	72.0	34.2	470.8
Wholesale and retail trade	251.6	195.3	292.3	262.1	185.4	103.9	1,290.5
Transport and storage	14.9	44.3	96.5	79.3	72.9	41.0	348.9
Finance, property and business services	55.0	100.7	162.1	114.1	70.3	44.3	546.4
Community services	42.7	142.6	319.3	263.4	165.0	96.1	1,029.1
Recreation, personal and other services	47.0	62.5	97.5	88.1	62.1	40.3	397.5
Other industries	32.7	84.2	168.6	118.2	105.2	71.6	580.5
Total	642.3	948.8	1,693.5	1,408.7	1,045.7	660.5	6,399.5

TABLE 16. EMPLOYED PERSONS : INDUSTRY BY OCCUPATIONAL STATUS, NOVEMBER 1981
(' 000)

Industry division or subdivision	Males	Females	Persons
EMPLOYERS			
Agriculture and services to agriculture	38.8	14.5	53.3
Forestry and logging, fishing and hunting	*	*	*
Mining	*	*	*
Manufacturing	16.6	6.2	22.8
Food, beverages and tobacco	*	*	*
Metal products	*	*	*
Other manufacturing	12.4	*	16.4
Construction	42.4	9.4	51.8
Wholesale trade	10.1	*	14.2
Retail trade	54.2	38.3	92.5
Transport and storage	10.7	*	13.9
Finance, property and business services	32.0	4.6	36.6
Community services	16.8	5.3	22.1
Recreation, personal and other services	21.9	15.8	37.8
Other industries	*	*	*
Total	246.7	101.6	348.2
SELF-EMPLOYED PERSONS			
Agriculture and services to agriculture	130.8	49.3	180.1
Forestry and logging, fishing and hunting	6.1	*	7.3
Mining	*	*	*
Manufacturing	16.8	9.7	26.5
Food, beverages and tobacco	*	*	*
Metal products	*	*	*
Other manufacturing	13.8	9.1	22.8
Construction	107.8	15.1	122.9
Wholesale trade	13.6	7.4	20.9
Retail trade	62.5	55.3	117.8
Transport and storage	35.1	5.8	40.9
Finance, property and business services	31.6	12.0	43.6
Community services	7.1	13.6	20.6
Recreation, personal and other services	24.5	19.6	44.1
Other industries	*	*	*
Total	438.5	189.3	627.8
WAGE AND SALARY EARNERS			
Agriculture and services to agriculture	106.2	29.0	135.2
Forestry and logging, fishing and hunting	12.5	*	13.9
Mining	85.5	9.0	94.4
Manufacturing	897.2	311.8	1,209.0
Food, beverages and tobacco	125.1	50.9	176.0
Metal products	195.5	26.8	222.3
Other manufacturing	576.6	234.1	810.7
Construction	272.3	22.9	295.2
Wholesale trade	261.5	97.1	358.6
Retail trade	320.9	360.6	681.6
Transport and storage	253.6	39.9	293.5
Finance, property and business services	241.4	224.5	465.9
Community services	358.2	627.9	986.2
Recreation, personal and other services	128.1	185.7	313.9
Other industries	411.2	144.4	555.6
Total	3,348.8	2,054.2	5,403.0
TOTAL(a)			
Agriculture and services to agriculture	281.7	97.4	379.1
Forestry and logging, fishing and hunting	20.7	*	23.7
Mining	88.0	9.3	97.3
Manufacturing	931.0	328.3	1,259.3
Food, beverages and tobacco	126.3	52.6	178.9
Metal products	201.4	28.4	229.8
Other manufacturing	603.2	247.2	850.5
Construction	422.8	48.1	470.8
Wholesale trade	285.4	108.6	394.0
Retail trade	439.2	457.4	896.5
Transport and storage	299.5	49.4	348.9
Finance, property and business services	305.2	241.2	546.4
Community services	382.1	647.0	1,029.1
Recreation, personal and other services	175.5	222.1	397.5
Other industries	412.1	144.7	556.8
Total	4,043.1	2,356.4	6,399.5

(a) Includes unpaid family helpers who worked 15 hours or more in the survey week.

TABLE 17. HOURS WORKED BY EMPLOYED PERSONS, NOVEMBER 1981

	Females			Total	Persons
	Males	Married	Not married		
NUMBER EMPLOYED (' 000)					
Weekly hours worked—					
0(a)	209.7	71.0	43.5	114.5	324.2
1-15	126.5	289.3	123.7	413.0	539.5
16-29	281.2	316.3	94.0	410.3	691.6
30-34	341.1	148.3	90.8	239.2	580.3
35-39	445.6	169.3	173.2	342.5	788.1
40	1,239.9	278.5	269.7	548.3	1,788.2
41-44	239.2	42.9	45.6	88.5	327.7
45-48	353.5	41.0	33.4	74.4	428.0
49 and over	806.3	80.7	45.0	125.7	932.1
Total	4,043.1	1,437.5	918.9	2,356.4	6,399.5
WEEKLY HOURS WORKED					
Aggregate weekly hours worked (million)	160.4	40.3	29.2	69.6	230.0
By full-time workers	157.0	30.2	26.5	56.6	213.6
By part-time workers	3.4	10.2	2.8	12.9	16.3
Average weekly hours worked	39.7	28.1	31.8	29.5	35.9
By full-time workers	41.0	37.9	36.9	37.4	40.0
By part-time workers	16.1	15.9	13.7	15.3	15.5
By wage and salary earners	37.9	27.9	31.6	29.5	34.7
By other than wage and salary earners(b)	48.4	28.6	36.4	29.5	42.7
Average weekly hours worked by persons who worked one hour or more in the survey week	41.8	29.5	33.4	31.0	37.9
By full-time workers	43.2	39.9	38.8	39.4	42.1
By part-time workers	16.8	16.7	14.3	16.1	16.2

(a) Persons who had a job from which they were absent for the whole of the survey week. See Explanatory notes, paragraph 18. (b) Employers; self-employed persons; and unpaid family helpers who worked 15 hours or more in the survey week.

TABLE 18. AVERAGE WEEKLY HOURS WORKED BY EMPLOYED PERSONS : INDUSTRY AND OCCUPATION, NOVEMBER 1981

	Females			Total	Persons
	Males	Married	Not married		
INDUSTRY					
Agriculture and services to agriculture	53.3	28.8	37.7	30.4	47.5
Forestry and logging, fishing and hunting	38.5	*	*	*	36.5
Mining	39.9	*	40.5	36.1	39.5
Manufacturing	38.3	31.2	34.7	32.3	36.7
Food, beverages and tobacco	37.1	31.5	35.4	32.7	35.8
Metal products	38.3	30.5	33.8	31.4	37.5
Other manufacturing	38.5	31.3	34.6	32.3	36.7
Construction	38.7	18.2	32.7	20.7	36.8
Wholesale and retail trade	40.4	29.1	27.6	28.5	35.2
Transport and storage	38.9	27.6	36.2	31.2	37.8
Finance, property and business services	39.3	26.6	34.3	30.2	35.3
Community services	38.5	27.5	33.8	29.9	33.1
Recreation, personal and other services	41.3	25.8	27.6	26.5	33.0
Other industries	34.4	28.1	32.8	30.3	33.4
Total	39.7	28.1	31.8	29.5	35.9
OCCUPATION					
Professional, technical, etc.	39.6	28.9	35.4	31.7	36.0
Administrative, executive and managerial	46.5	36.0	42.2	37.4	45.2
Clerical	35.1	27.2	32.8	29.6	31.2
Sales	40.2	29.8	26.3	28.1	33.7
Farmers, fishermen, timber-getters, etc.	49.9	29.0	36.9	30.5	45.7
Transport and communication	39.5	26.4	32.8	28.5	38.0
Tradesmen, production-process workers and labourers, n.e.c.; and miners, quarrymen, etc.	37.4	31.7	33.0	32.1	36.7
Service, sport and recreation	36.8	23.4	27.7	24.8	29.3
Total employed	39.7	28.1	31.8	29.5	35.9

TABLE 19. EMPLOYED MARRIED FEMALES : INDUSTRY, OCCUPATION AND FULL-TIME AND PART-TIME STATUS, NOVEMBER 1981

	Full-time workers	Part-time workers			Total	Total
		Hours worked				
		Under 16	16-29	30-34		
INDUSTRY						
Agriculture and services to agriculture	35.9	25.5	13.0	5.4	43.9	79.8
Manufacturing	176.0	22.1	22.5	7.7	52.2	228.3
Construction	9.9	20.9	6.7	*	29.8	39.7
Wholesale and retail trade	165.6	74.6	66.1	13.2	153.9	319.5
Transport and storage	15.6	8.1	5.2		13.3	29.0
Finance, property and business services	73.0	30.4	19.6	5.8	55.8	128.8
Community services	208.3	76.3	83.9	28.0	188.1	396.4
Recreation, personal and other services	51.5	45.1	32.2	6.0	83.3	134.8
Other industries	60.1	10.8	7.5	*	21.1	81.2
Total	796.0	313.8	254.7	72.9	641.4	1,437.5
OCCUPATION						
Professional, technical, etc.	142.3	41.7	41.9	17.8	101.4	243.7
Administrative, executive and managerial	32.6	6.5	5.2	*	13.8	46.5
Clerical	256.7	97.6	73.7	19.2	190.4	447.1
Sales	80.4	40.4	37.5	5.5	83.4	163.8
Farmers, fisherwomen, timber-getters, etc.	35.0	24.7	14.2	5.3	44.2	79.1
Transport and communication	18.0	7.7	5.7		13.4	31.4
Tradeswomen, production-process workers and labourers, n.e.c.; and miners, quarry workers, etc.	142.6	16.7	16.4	5.0	38.1	180.7
Service, sport and recreation	88.5	78.6	62.0	16.1	156.7	245.2
Total	796.0	313.8	254.7	72.9	641.4	1,437.5

TABLE 20. EMPLOYED PERSONS : OCCUPATIONAL STATUS OF FULL-TIME AND PART-TIME WORKERS, NOVEMBER 1981 (' 000)

	Full-time workers			Part-time workers			Total		
	Males	Females	Persons	Males	Females	Persons	Males	Females	Persons
Employers	237.7	52.1	289.9	8.9	49.4	58.4	246.7	101.6	348.2
Self-employed	394.0	79.1	473.0	44.5	110.2	154.7	438.5	189.3	627.8
Wage and salary earners	3,194.0	1,375.8	4,569.9	154.8	678.4	833.1	3,348.8	2,054.2	5,403.0
Unpaid family helpers(a)	5.8	6.3	12.1	*	5.0	8.4	9.2	11.3	20.5
Total	3,831.5	1,513.4	5,344.8	211.6	843.0	1,054.7	4,043.1	2,356.4	6,399.5

(a) Unpaid family helpers who worked 15 hours or more in the survey week.

TABLE 21. FULL-TIME WORKERS WHO WORKED LESS THAN 35 HOURS, BY REASON, NOVEMBER 1981 (' 000)

Reason for working less than 35 hours	Males	Females		Total	Persons
		Married	Not married		
Leave, holiday or flexitime	492.2	129.7	98.7	228.4	720.5
Own illness or injury	122.1	35.9	36.9	72.8	194.9
Bad weather, plant breakdown, etc.	39.6	*	*	*	42.2
Began or left job in the survey week	10.5	*	*	6.0	16.5
Stood down, on short time, insufficient work	26.5	5.7	*	9.4	35.9
Other reasons	56.1	8.7	5.9	14.6	70.8
Total	746.9	183.6	150.4	334.0	1,080.9

TABLE 22. PART-TIME WORKERS : WHETHER PREFERRED TO WORK MORE HOURS AND WHETHER LOOKING FOR FULL-TIME WORK, BY AGE, NOVEMBER 1981 ('000)

	Age group (years)						Total
	15-19	20-24	25-34	35-44	45-54	55 and over	
MALES							
Total	66.0	32.0	31.2	19.7	18.9	43.8	211.6
Preferred not to work more hours	47.6	20.6	23.2	13.9	14.4	40.2	159.9
Preferred to work more hours	18.4	11.4	8.0	5.8	4.5	*	51.7
Had actively looked for full-time work(a)	11.1	6.2	8.2		*	*	28.4
MARRIED FEMALES							
Total	*	32.3	195.7	220.3	138.4	52.8	641.4
Preferred not to work more hours	*	25.2	177.9	200.8	126.8	50.5	582.6
Preferred to work more hours	*	7.1	17.7	19.5	11.6	*	58.8
Had actively looked for full-time work(a)	*	6.6		5.2		*	12.1
ALL FEMALES							
Total	95.5	70.5	216.6	236.5	150.5	73.5	843.0
Preferred not to work more hours	71.9	50.2	194.1	212.0	136.7	70.1	735.0
Preferred to work more hours	23.6	20.2	22.5	24.5	13.8	*	108.0
Had actively looked for full-time work(a)	11.2	10.5	6.1	4.9	*	*	35.2
PERSONS							
Total	161.5	102.5	247.8	256.2	169.4	117.3	1,054.7
Preferred not to work more hours	119.5	70.9	217.3	225.9	151.1	110.2	894.9
Preferred to work more hours	42.0	31.6	30.5	30.3	18.3	7.0	159.7
Had actively looked for full-time work(a)	22.3	16.7	10.4	8.8	5.3		63.5

(a) In the four weeks up to the end of the survey week.

TABLE 23. PART-TIME WORKERS : WHETHER PREFERRED TO WORK MORE HOURS AND WHETHER LOOKING FOR FULL-TIME WORK, BY HOURS WORKED, NOVEMBER 1981 ('000)

	Hours worked by persons who worked in the survey week						Persons who did not work in the survey week(a)	Total
	1-5	6-10	11-15	16-20	21-29	30-34		
MALES								
Total	31.0	45.4	21.8	30.7	32.5	40.7	9.7	211.6
Preferred not to work more hours	21.5	32.1	15.6	22.1	24.4	35.2	9.0	159.9
Preferred to work more hours	9.4	13.2	6.2	8.6	8.1	5.5	*	51.7
Had actively looked for full-time work(b)	5.5	6.6	8.1		4.8	*	*	28.4
MARRIED FEMALES								
Total	70.9	111.3	101.3	135.4	119.3	72.9	30.5	641.4
Preferred not to work more hours	57.0	98.7	91.2	127.1	111.5	69.0	28.1	582.6
Preferred to work more hours	13.9	12.6	10.1	8.3	7.8	*	*	58.8
Had actively looked for full-time work(b)	5.1		6.4			*	*	12.1
ALL FEMALES								
Total	106.5	172.7	121.4	159.4	146.0	98.1	39.0	843.0
Preferred not to work more hours	84.4	144.2	106.6	144.1	131.3	89.3	35.0	735.0
Preferred to work more hours	22.1	28.5	14.7	15.3	14.7	8.8	*	108.0
Had actively looked for full-time work(b)	6.5	11.6	5.1	4.5	4.6	*	*	35.2
PERSONS								
Total	137.4	218.0	143.1	190.1	178.5	138.8	48.7	1,054.7
Preferred not to work more hours	105.9	176.3	122.3	166.2	155.7	124.5	44.0	894.9
Preferred to work more hours	31.5	41.7	20.9	23.9	22.8	14.3	4.7	159.7
Had actively looked for full-time work(b)	12.1	18.2	8.9	8.9	9.5	5.1	*	63.5

(a) Persons who had a part-time job from which they were absent for the whole of the survey week. See Explanatory notes, paragraph 18. (b) In the four weeks up to the end of the survey week.

TABLE 24. EMPLOYED PERSONS : EMPLOYMENT/POPULATION RATIOS BY AGE AND MARITAL STATUS, NOVEMBER 1981
(per cent)

Age group (years)	Males			Females			Persons
	Married	Not married	Total	Married	Not married	Total	
15-64	88.5	69.3	81.4	44.5	57.1	48.7	65.2
15-19	*	52.7	52.9	41.3	48.4	48.1	50.6
20-24	94.9	80.1	83.4	50.3	75.7	64.4	74.0
25-34	94.3	84.2	91.5	45.0	73.9	50.4	70.9
35-44	94.5	80.8	92.7	55.8	64.6	57.0	75.2
45-54	90.9	73.3	88.6	47.2	54.6	48.3	68.9
55-59	80.3	63.9	77.9	26.1	36.7	28.5	53.3
60-64	49.8	41.4	48.5	10.1	16.3	12.0	29.7
65 and over	10.3	7.2	9.5	2.9	2.4	2.6	5.5
Total	78.4	64.4	73.4	40.7	43.6	41.8	57.4

TABLE 25. UNEMPLOYED PERSONS, BY AGE, STATES, NOVEMBER 1981
(' 000)

Age group (years)	New South Wales	Victoria	Queensland	South Australia	Western Australia	Tasmania	Australia(a)
MALES							
15-19	19.3	15.1	6.5	6.8	5.4	1.8	56.1
20-24	13.6	8.4	4.6	5.8	4.8	1.6	39.7
25-34	17.7	8.8	5.9	5.4	4.6	1.8	45.3
35 and over	17.9	15.4	9.5	9.0	4.9	*	59.2
Total	68.5	47.7	26.4	27.1	19.7	6.6	200.4
FEMALES							
15-19	17.7	15.7	7.0	6.1	5.8	2.2	56.1
20-24	10.2	9.1	5.8	4.1	3.3	} 2.5 {	34.6
25-34	14.3	8.2	6.5	3.9	3.9		39.3
35 and over	15.1	9.8	6.4	4.6	3.5	*	41.4
Total	57.2	42.8	25.8	18.7	16.5	5.7	171.5
PERSONS							
Looking for full-time work—							
15-19	29.3	26.1	10.6	11.1	9.7	3.8	92.5
20-24	22.2	16.2	9.5	9.3	7.4	2.5	68.7
25-34	26.1	13.0	9.3	7.9	7.3	2.3	67.5
35-44	13.1	11.0	5.4	4.4	3.1	} 1.5 {	38.2
45-54	7.7	6.3	4.4	4.2	3.7		26.2
55 and over	4.5	5.3	*	3.0	*	*	17.7
Total looking for full-time work	103.0	77.8	41.7	39.9	31.3	10.4	310.7
Total—							
15-19	37.0	30.8	13.5	12.9	11.2	4.0	112.3
20-24	23.8	17.5	10.4	9.9	8.1	2.8	74.3
25-34	32.0	17.0	12.4	9.3	8.5	3.2	84.7
35-44	17.5	12.4	7.5	5.4	3.9	} 1.9 {	48.4
45-54	9.7	7.6	4.9	4.8	2.7		31.2
55 and over	5.8	5.3	3.6	3.5	*	*	21.0
Total	125.8	90.6	52.3	45.8	36.2	12.3	371.9

(a) Includes the Northern Territory and the Australian Capital Territory.

TABLE 26. UNEMPLOYED PERSONS, BY AGE AND WHETHER LOOKING FOR FULL-TIME OR PART-TIME WORK, NOVEMBER 1981

	Number unemployed (' 000)					Unemployment rate (per cent)				
	Males		Females		Persons	Males		Females		Persons
	Married	Total	Married	Total		Married	Total	Married	Total	
LOOKING FOR FULL-TIME WORK										
<i>Total</i>	71.9	185.6	43.2	125.1	310.7	2.6	4.6	5.2	7.6	5.5
Aged 15-19 years	*	46.7	*	45.8	92.5	*	14.4	*	18.4	16.1
Looking for first job	*	18.5	*	19.6	38.1
Attending school	*	7.0	*	5.2	12.2	n.a.	n.a.	n.a.	n.a.	n.a.
Aged 20 years and over	71.5	138.9	42.3	79.3	218.2	2.6	3.8	5.1	5.7	4.3
20-24 years	*	38.5	7.2	30.2	68.7	*	7.0	6.1	8.2	7.5
25-34 years	24.1	43.9	15.7	23.5	67.5	3.0	4.0	6.1	5.7	4.5
35-44 years	17.3	23.4	10.9	14.7	38.2	2.2	2.6	4.7	4.9	3.2
45-54 years	13.8	17.5	7.2	8.6	26.2	2.3	2.6	4.4	4.0	2.9
55 years and over	12.1	15.5	*	*	17.7	3.0	3.3	*	*	3.1
Aged 15-64 years	71.5	185.3	43.2	124.9	310.2	2.6	4.7	5.2	7.7	5.5
LOOKING FOR PART-TIME WORK										
<i>Total</i>	*	14.8	30.2	46.4	61.2	*	6.5	4.5	5.2	5.5
Aged 15-19 years	*	9.4	*	10.4	19.8	*	12.5	*	9.8	10.9
Attending school	*	8.2	*	7.7	16.0	*	15.5	*	11.9	13.5
Aged 20 years and over	*	5.4	29.5	36.1	41.4	*	3.6	4.4	4.6	4.4
20-24 years	*	*	*	*	5.6	*	*	*	*	5.2
25-34 years	*	*	14.1	15.8	17.2	*	*	6.7	6.8	6.5
35-44 years	*	*	8.4	9.6	10.3	*	*	3.7	3.9	3.9
45-54 years	*	*	4.8	6.3	8.4	*	*	2.4	2.7	2.8
55 years and over	*	*	*	*	*	*	*	*	*	*
Aged 15-64 years	*	14.4	30.1	46.2	60.6	*	6.9	4.5	5.3	5.6
TOTAL										
<i>Total</i>	74.5	200.4	73.4	171.5	371.9	2.6	4.7	4.9	6.8	5.5
Aged 15-19 years	*	56.1	*	56.1	112.3	*	14.1	*	15.8	14.9
Attending school	*	15.2	*	12.9	28.1	*	24.9	*	18.2	21.3
Aged 20 years and over(a)	74.1	144.3	71.9	115.4	259.6	2.6	3.8	4.8	5.3	4.3
20-24 years	*	39.7	9.5	34.6	74.3	*	6.9	6.3	7.8	7.3
25-34 years	24.6	45.3	29.8	39.3	84.7	2.9	4.0	6.4	6.1	4.8
35-44 years	17.7	24.1	19.3	24.4	48.4	2.2	2.6	4.2	4.5	3.3
45-54 years	14.1	18.1	11.0	13.2	31.2	2.2	2.6	3.6	3.6	2.9
55-59 years	8.2	10.3	*	*	13.0	3.1	3.4	*	*	3.2
60-64 years	4.8	6.0	*	*	6.9	3.7	4.0	*	*	3.6
Aged 15-64 years	74.0	199.7	73.3	171.1	370.8	2.6	4.8	4.9	6.8	5.5

(a) Includes unemployed persons aged 65 years and over, details for whom are not shown separately.

TABLE 27. UNEMPLOYED PERSONS, BY AGE AND BIRTHPLACE, NOVEMBER 1981

	Number unemployed (' 000)			Unemployment rate (per cent)		
	Males	Females	Persons	Males	Females	Persons
	BORN IN AUSTRALIA					
<i>Total</i>	136.7	120.4	257.1	4.5	6.4	5.2
Looking for full-time work	126.2	86.2	212.5	4.4	7.2	5.2
Looking for part-time work	10.5	34.1	44.6	6.0	4.9	5.2
Aged 15-19 years	45.6	46.4	91.9	13.4	15.3	14.3
Aged 20 years and over	91.1	74.0	165.2	3.3	4.7	3.8
20-24 years	31.4	25.6	57.0	6.5	7.0	6.7
25-34 years	30.7	24.7	55.4	3.6	5.2	4.2
35 years and over	29.0	23.7	52.7	2.1	3.2	2.5
BORN OUTSIDE AUSTRALIA						
<i>Total</i>	63.7	51.1	114.8	5.4	7.9	6.3
Looking for full-time work	59.4	38.8	98.2	5.3	8.7	6.2
Looking for part-time work	*	12.3	16.6	*	6.2	6.6
Aged 15-19 years	10.6	9.8	20.4	18.1	18.5	18.3
Aged 20 years and over	53.1	41.3	94.5	4.7	7.0	5.5
20-24 years	8.3	8.9	17.3	8.4	11.4	9.7
25-34 years	14.6	14.6	29.2	5.0	8.5	6.3
35 years and over	30.2	17.8	48.0	4.1	5.2	4.5

TABLE 28. UNEMPLOYED PERSONS, BY DURATION OF UNEMPLOYMENT AND AGE, ETC., NOVEMBER 1981

Duration of unemployment (weeks)	Age group (years)				Total(a)	Married	Not married	Looking for—	
	15-19	20-24	25-34	35-54				Full-time work	Part-time work
MALES									
— '000 —									
Under 2	6.2	*	6.1	*	15.9	4.5	11.5	12.7	
2 and under 4	8.5	5.0	6.1	5.8	24.2	8.8	15.4	21.5	5.9
4 and under 8	8.8	*	5.5	4.9	25.1	8.2	17.0	22.1	
8 and under 13	9.6	5.0	6.8	*	25.1	8.2	16.8	21.9	6.1
13 and under 26	8.6	7.9	7.4	5.7	31.1	10.0	21.1	30.1	*
26 and under 39	*	5.8	6.3	6.3	19.1	7.9	11.1	18.5	*
39 and under 52	4.6		7.3	4.9	13.4	4.5	8.9	13.0	*
52 and under 65			*	*	14.6	6.7	7.9	14.5	*
65 and under 78		4.7	*	*	*		*		*
78 and under 91	6.1	*	*	*	4.5	4.6	*	7.2	*
91 and under 104		*	4.5	*	*	*	*	*	*
104 and over		*		7.2	23.0	10.9	12.1	22.9	*
Total	56.1	39.7	45.3	42.1	200.4	74.5	125.9	185.6	14.8
—weeks—									
Average (mean) duration	20.3	29.1	34.5	50.1	35.8	43.9	31.0	37.7	12.0
Median duration	10.4	16.7	20.3	24.3	17.1	22.8	14.4	19.3	6.0
FEMALES									
— '000 —									
Under 2	6.5	6.4	6.1	*	19.9	10.4	9.5	9.9	10.0
2 and under 4	*		4.8	4.9	18.6	10.1	8.5	11.9	6.7
4 and under 8	10.2	4.6	6.0	4.8	25.9	9.5	16.4	19.3	6.6
8 and under 13	7.3	*	6.3	4.6	22.4	10.5	11.9	16.7	5.6
13 and under 26	7.5	4.9	6.4	*	23.1	10.4	12.8	17.9	5.2
26 and under 39	5.7	5.7	5.0	4.6	18.1	8.0	10.1	13.0	5.1
39 and under 52	4.6	*		4.6	10.1		6.5	8.4	
52 and under 65		*			11.4	7.6	7.3	9.7	
65 and under 78	4.6	*			4.8	*			4.5
78 and under 91		*	4.8		*		4.5	5.8	
91 and under 104	5.5	*		5.5	*	*	*	*	
104 and over		4.6			15.2	4.7	10.5	12.5	*
Total	56.1	34.6	39.3	37.5	171.5	73.4	98.1	125.1	46.4
—weeks—									
Average (mean) duration	27.7	41.5	21.5	31.3	30.7	24.3	35.4	33.7	22.6
Median duration	12.8	18.7	10.2	13.2	12.8	11.2	15.8	16.4	8.0
PERSONS									
— '000 —									
Under 2	12.7	5.9	9.1	6.9	35.8	14.9	21.0	22.6	13.2
2 and under 4	12.9	9.0	7.9	10.8	42.8	18.9	24.0	33.4	9.4
4 and under 8	18.9	8.7	11.5	9.6	51.0	17.7	33.3	41.4	9.5
8 and under 13	16.8	9.1	13.1	7.5	47.4	18.7	28.8	38.7	8.8
13 and under 26	16.1	12.8	13.8	9.8	54.3	20.4	33.8	48.0	6.2
26 and under 39	9.4	8.2	9.8	8.4	37.2	16.0	21.2	31.5	5.7
39 and under 52	9.2	*	4.9	4.6	23.4	8.0	15.4	21.4	
52 and under 65	5.9	6.1	6.3	6.0	26.1	10.8	15.3	24.2	4.6
65 and under 78	*	*	*		5.2			4.6	
78 and under 91	*	*	*	4.5	7.3	6.3	6.2	6.8	*
91 and under 104	*	*	*	*	*	*	*	*	*
104 and over	6.6	8.1	6.3	10.9	38.2	15.5	22.7	35.3	*
Total	112.3	74.3	84.7	79.7	371.9	147.9	224.0	310.7	61.2
—weeks—									
Average (mean) duration	24.0	34.9	28.4	41.3	33.4	34.2	33.0	36.1	20.1
Median duration	11.4	17.5	13.6	19.6	15.1	15.5	14.9	18.2	7.3

(a) Includes persons aged 55 years and over, details for whom are not shown separately.

TABLE 29. UNEMPLOYED PERSONS, BY INDUSTRY AND OCCUPATION OF LAST FULL-TIME JOB AND DURATION OF UNEMPLOYMENT, NOVEMBER 1981(a)
(* 000)

	Duration of unemployment (weeks)							Total
	Under 4	4 and under 8	8 and under 13	13 and under 26	26 and under 39	39 and under 65	65 and over	
Had worked for two weeks or more full-time in the last two years(b)	45.6	34.6	31.4	41.9	25.4	31.4	8.6	218.7
Industry division—								
Manufacturing	12.3	7.8	8.4	12.3	7.5	8.2	*	59.2
Construction	8.0	8.0	7.9	12.1	4.8	6.7	*	21.1
Wholesale and retail trade	11.2	8.0	7.0	12.1	5.4	6.7	*	52.4
Finance, property and business services	5.9				4.5			10.5
Community services	4.8	6.8		5.1		*	*	19.9
Recreation, personal and other services	5.9		5.2		5.8		*	18.2
Other industries	6.7	6.9	5.0	5.8	*	7.7	*	37.4
Occupation group—								
Professional, technical, etc.	5.0			4.6		*	*	11.5
Clerical	9.5	5.0	*	4.6		5.8	*	29.1
Sales	*	4.7	*	5.3		7.0	*	25.4
Farmers, fishermen, etc.	4.7			6.0		*	*	14.2
Transport and communication	4.7				6.1		*	11.0
Tradesmen, production-process workers and labourers, n.e.c.	17.9	13.2	14.2	20.2	10.4	14.4	*	94.9
Service, sport and recreation	*	4.5	*	4.9	4.9		5.4	27.2
Other occupations	*	*	*	*	*	*	*	5.4
Other	24.8	16.4	16.0	12.4	11.8	18.1	45.3	144.8
Looking for first job	14.4	10.8	10.2	5.9	4.6	10.1	8.6	64.5
Looking for full-time work	7.8	6.3	6.8	*	*	9.2	7.7	45.2
Other	10.3	5.6	5.9	6.5	7.2	8.0	36.7	80.3
Stood down	8.4							8.4
Total	78.6	51.0	47.4	54.3	37.2	49.5	53.9	371.9

(a) Duration of unemployment is not available for some industry divisions and occupation groups because of the high standard error of the estimates. (b) See explanatory notes, paragraph 14.

TABLE 30. UNEMPLOYED PERSONS AGED 15 TO 19 YEARS, BY DURATION OF UNEMPLOYMENT AND WHETHER OR NOT ATTENDING SCHOOL, NOVEMBER 1981(a)

	Attending school	Not attending school		Total
		Left school before 1980	Left school 1980 to survey date	
NUMBER (* 000)				
Duration of unemployment (weeks)—				
Under 4	8.8	7.2	9.7	25.6
4 and under 13	12.5	10.1	13.1	35.8
13 and under 26	*	6.7	6.9	16.1
26 and over	*	16.6	13.8	34.8
Total	28.1	40.5	43.6	112.3
AVERAGE (MEAN) DURATION OF UNEMPLOYMENT (weeks)				
Males	10.6	31.0	17.8	20.3
Females	16.2	39.3	23.0	27.7
Persons	13.2	35.4	20.4	24.0
Looking for—				
Full-time work	14.5	36.3	20.8	26.6
Part-time work	12.1	*	*	12.0
MEDIAN DURATION OF UNEMPLOYMENT (weeks)				
Males	7.6	17.2	10.6	10.4
Females	7.4	21.2	15.1	12.8
Persons	7.5	18.8	12.2	11.4
Looking for—				
Full-time work	8.4	19.8	12.8	13.1
Part-time work	6.9	*	*	6.3

(a) For employment status of persons aged 15-19 years see Table 6.

TABLE 31. UNEMPLOYED PERSONS : ACTIVE STEPS TAKEN TO FIND WORK AND AGE, NOVEMBER 1981^(a)
(' 000)

	Persons					Total
	Males	Females	Aged 15-19 years	Aged 20-24 years	Aged 25 years and over	
Took active steps to find work—						
Wrote, phoned or applied in person to an employer	155.9	132.9	87.9	58.9	142.1	288.8
Answered a newspaper advertisement for a job						
Checked factory or Commonwealth Employment Service noticeboards						
Been registered with the Commonwealth Employment Service	39.6	29.0	21.3	12.5	34.8	68.6
Checked or registered with any other employment agency						
Advertised or tendered for work	*	*	*	*	*	6.1
Contacted relatives or friends						
<i>Total, took active steps</i>	197.2	166.3	110.4	72.5	180.6	363.5
Stood down	*	5.2	*	*	4.7	8.4
Total	200.4	171.5	112.3	74.3	185.3	371.9

(a) See Explanatory notes, paragraph 10.

TABLE 32. PERSONS NOT IN THE LABOUR FORCE : AGE AND MARITAL STATUS, NOVEMBER 1981

Age group (years)	Males			Females			Persons	Proportion of population ^(a) — per cent —
	Married	Not married	Total	Married	Not married	Total		
	— ' 000 —							
15-19	*	249.3	249.6	14.1	252.0	266.2	515.8	40.6
20-24	*	64.3	67.5	130.7	60.6	191.4	258.9	20.2
25-34	24.2	31.9	56.0	504.5	49.3	553.8	609.9	25.4
35-44	28.5	17.2	45.7	332.1	37.2	369.3	414.9	22.2
45-54	47.1	23.8	71.0	321.3	47.8	369.0	440.0	29.0
55-59	54.7	17.4	72.1	209.7	53.0	262.7	334.8	45.0
60-64	122.6	25.2	147.8	197.2	82.8	280.0	427.8	69.2
65-69	168.5	39.3	207.8	156.6	113.4	270.0	477.8	90.1
70 and over	243.9	101.8	345.6	156.5	396.4	552.9	898.6	96.9
Total	692.9	570.2	1,263.2	2,022.8	1,092.5	3,115.3	4,378.5	39.3

(a) Persons not in the labour force as a percentage of the civilian population in the same group.

TABLE 33. PERSONS NOT IN THE LABOUR FORCE : WHETHER OR NOT LOOKING FOR WORK, ETC., NOVEMBER 1981
(' 000)

	Males			Females			Persons
	Married	Not married	Total	Married	Not married	Total	
Looking for work	7.5	57.1	64.6	26.1	44.3	70.4	135.0
Took active steps to find work but not available to start work in the survey week ^(a)	4.7	51.2	55.8	8.7	36.5	45.2	101.0
Did not take active steps to find work	*	5.9	8.8	17.4	7.8	25.2	34.0
Not looking for work	653.9	451.1	1,105.0	1,977.8	952.4	2,930.2	4,035.2
Permanently unable to work	15.5	14.2	29.7	7.3	17.9	25.2	54.9
In institutions	16.0	47.9	63.9	11.6	77.8	89.4	153.3
Total	692.9	570.2	1,263.2	2,022.8	1,092.5	3,115.3	4,378.5

(a) For reasons other than own temporary illness or injury.

GROSS FLOWS

In order to minimise respondent fatigue and at the same time maintain continuity within the population survey sample, one eighth of the dwellings in the sample (except the large non-private dwellings) are replaced after each survey. Adoption of this rotation procedure, whereby about seven eighths of the sample remains unchanged from one month to the next, enables more reliable measurements of changes in the labour force characteristics of the population to be made than would be possible if a new sample were introduced each month.

Because a high proportion of private dwellings selected in one survey remains in the sample for the following survey, it is possible to match the characteristics of most of the persons in those dwellings from one month to the next, to record any changes that occur, and hence to produce estimates of *flows* between the different categories of the population and labour force.

The procedures used to select persons in non-private dwellings preclude the possibility of matching any of them who may be included in successive surveys. For this and other reasons, including the mobility of the population and non-response in either or both surveys, about 10 per cent of persons in those dwellings which are included in the sample in successive months cannot be matched. Those who can be matched represent about 80 per cent of all persons in the survey.

Changes in the characteristics of this latter group are shown in Table 34. About one half of the remaining (unmatched) 20 per cent of persons in the survey are likely to have characteristics similar to those in the matched group, but the characteristics of the other half are likely to be somewhat different.

Gross flow estimates shown in the following table relate only to those persons in private dwellings for whom information was obtained in successive surveys. The expansion factors used in calculating the estimates were those applying to the second of each pair of months.

Although it is not possible to provide gross flow estimates for all persons in the survey it is considered that the estimates derived from matched records will be a useful guide to the magnitude of the movements between categories which underlie the changes in monthly levels.

While every effort is made to reduce non-sampling errors to a minimum, any such errors affecting employment status will tend to accumulate in the gross flow statistics rather than to cancel out. The estimates are also subject to sampling variability, as explained in paragraphs 3 to 5 of the Technical note. For these reasons the estimates of flows should be used with caution. The standard errors may be obtained from Table A on page 29.

TABLE 34. ESTIMATES, DERIVED FROM MATCHED RECORDS, OF EMPLOYMENT STATUS IN OCTOBER 1981 AND NOVEMBER 1981, AND GROSS CHANGES (FLOWS) ('000)

		Females			Persons
		Males	Married	Total	
Employment status in—					
October 1981	November 1981				
Employed full time	Employed full time	2,990.6	587.3	1,116.3	4,106.9
	Employed part time	35.0	39.5	54.1	89.1
	Unemployed	18.6	*	9.3	27.9
	Not in the labour force	33.6	21.7	27.8	61.3
Employed part time	Employed full time	39.1	37.2	49.2	88.3
	Employed part time	108.6	440.8	562.3	670.9
	Unemployed	5.9	*	7.0	12.9
	Not in the labour force	21.3	45.7	60.9	82.2
Unemployed	Employed full time	26.2	*	11.3	37.5
	Employed part time	7.3	6.7	12.8	20.1
	Unemployed	97.0	26.1	72.1	169.2
	Not in the labour force	17.6	23.9	38.8	56.4
Not in the labour force	Employed full time	26.5	14.0	21.5	48.0
	Employed part time	18.3	47.8	63.5	81.9
	Unemployed	25.3	25.9	42.9	68.3
	Not in the labour force	847.1	1,524.4	2,270.0	3,117.1
Total flows into	Employed(a)	78.3	72.4	109.2	187.5
	Full time	91.7	55.1	82.1	173.8
	Part time	60.6	94.0	130.4	191.0
	Unemployed	49.9	32.2	59.2	109.1
	Not in the labour force	72.5	91.3	127.4	199.9
Total flows out of	Employed(a)	79.4	73.7	104.9	184.3
	Full time	87.2	64.1	91.1	178.3
	Part time	66.3	86.4	117.0	183.3
	Unemployed	51.1	34.5	62.9	114.0
	Not in the labour force	70.1	87.7	128.0	198.1
Total changes of status		200.7	195.9	295.8	496.4
Population represented by the matched sample		4,318.1	2,851.1	4,419.8	8,737.9

(a) Estimates in this category may be less than the sum of the estimates for employed full time and employed part time as the estimates in the latter two categories include movements between those two categories.

NOTE. When comparing figures for different periods, it is important to take into account the population represented by the matched sample, as shown in the last line of the table.

TECHNICAL NOTE

For more information on sample design, estimation procedure and reliability of the estimates, for current and earlier surveys, reference should be made to the Technical note in *The Labour Force, Australia, 1978* (6204.0).

Estimation procedure

2. The labour force estimates are derived from the population survey by use of a complex ratio estimation procedure, which ensures that the survey estimates conform to an independently estimated distribution of the population by age and sex, rather than to the age and sex distribution within the sample itself.

Reliability of the estimates

3. Two types of error are possible in an estimate based on a sample survey: sampling error and non-sampling error. The *sampling error* is a measure of the variability that occurs by chance because a sample, rather than the entire population, is surveyed. Since the estimates in this section are based on information obtained from occupants of a sample of dwellings the estimates and the movements derived from them are subject to sampling variability; that is, they may differ from the figures that would have been produced if all dwellings had been included in the surveys. One measure of the likely difference is given by the *standard error*, which indicates the extent to which an estimate might have varied by chance because only a sample of dwellings was included. There are about two chances in three that a sample estimate will differ by less than one standard error from the figure that would have been obtained if all dwellings had been included, and about nineteen chances in twenty that the difference will be less than two standard errors. The standard error can also be expressed as a percentage of the estimate, and this is known as the *relative standard error*.

4. Space does not allow for the separate indication of the standard errors of all estimates in this section. Standard errors of estimates for the latest month and of estimates of movements since the previous month are shown in Table I. Standard errors of other estimates and other monthly movements for periods from February 1978 should be determined by using Tables A and B on page 29. Standard errors of estimates and movements for periods prior to February 1978 were published in the Technical note in *The Labour Force, Australia, 1978* (6204.0).

5. The size of the standard error increases with the level of the estimate, so that the larger the estimate the larger the standard error. However, it should be noted that the larger the sample estimate the smaller will be the standard error in percentage terms. Thus, larger sample estimates will be relatively more reliable than smaller estimates.

6. As the standard errors in Table A show, *the smaller the estimate the higher is the standard error*. Very small estimates are subject to such high standard errors (relative to the size of the estimate) as to detract seriously from their value for most reasonable uses. In the tables in this section, estimates below the levels shown in Table A, and percentages based on such estimates, have not been included. Although figures for these small components can in some cases be derived by subtraction, they should not be regarded as reliable. See paragraph 9 concerning higher cut-off points for some estimates.

7. The movement in the level of an estimate is also subject to sampling variability. The standard error of the movement depends on the levels of the estimates from

which the movement is obtained rather than the size of the movement. An indication of the magnitude of standard errors of monthly movements is given in Table B on page 29. The estimates of standard error of monthly movements apply only to estimates of movements between two consecutive months. Movements between corresponding months of consecutive quarters (quarterly movements), corresponding months of consecutive years (annual movements) and two other non-consecutive months, will generally be subject to somewhat greater sampling variability than is indicated in Table B. A guide to the standard errors of quarterly movements for periods from February 1978 can be obtained by multiplying the figures in the table of standard errors of monthly movements (Table B) by 1.4. A guide to the standard errors of annual movements for periods from February 1978 can be obtained by multiplying the figures in the table of standard errors of estimates (Table A) by 1.4. When using Table A or Table B to calculate standard errors of movements, refer to the larger of the two estimates from which the movement is derived.

8. Examples of the calculation and use of standard errors are given below:

- (a) From Table A it will be seen that the estimate of 185,600 unemployed males looking for full-time work in November 1981 has a standard error of about 5,000. Therefore there are about two chances in three that the number that would have been obtained if all dwellings had been included in the survey would have been within the range 180,600 to 190,600 and about nineteen chances in twenty that it would have been within the range 175,600 to 195,600.
- (b) The estimate of movement in the number of unemployed males looking for full-time work from October 1981 to November 1981 is an increase of 200. Table B relates the standard error of the monthly movement to the larger of the two estimates from which the movement is derived. In this case the November 1981 estimate (185,600) is the larger. From Table B it will be seen that the standard error of the monthly movement is about 4,200. Therefore there are about two chances in three that if all dwellings had been included in the surveys the movement would have been within the range -4,000 to +4,400 and about nineteen chances in twenty that it would have been within the range -8,200 to +8,600.

9. The relative standard errors of estimates of *aggregate hours worked*, *average hours worked*, *average duration of unemployment*, and *median duration of unemployment* are obtained by first finding the relative standard error of the estimate of the total number of persons contributing to the estimate (see Table A) and then multiplying the figure so obtained by the following relevant factors.

Aggregate hours worked: 1.2
 Average hours worked: 0.5
 Average duration of unemployment: 1.5
 Median duration of unemployment: 2.0.

Because of these higher relative standard errors, estimates of aggregate hours worked, average duration of unemployment, and median duration of unemployment have higher cut-off points for publication (see paragraph 6) than other estimates as shown in Table A.

SUPPLEMENTARY AND SPECIAL SURVEYS

Although emphasis in the population survey is placed on the regular collection of data on demographic and labour force characteristics, supplementary and special surveys of particular aspects of the labour force or of other subjects are carried out from time to time. The results of these surveys are published separately.

<i>Title</i>	<i>Catalogue No.</i>
Supplementary surveys	
Australia	
Alcohol and Tobacco Consumption Patterns, February 1977	4312.0
Annual and Long Service Leave, August 1974; May 1979	6317.0
Assisted and Unassisted Migrants, August 1972; March 1980	3406.0
Attendance at an Educational Institution, March 1981	(a)
Birth Expectations of Married Women, November 1976; June 1979	3215.0
Child Care—May 1969; May 1973; May 1977; June 1980	4402.0
Chronic Illnesses, Injuries and Impairments—May 1968; May 1974	4305.0
Employment Status of Teenagers, August 1978(b)	6234.0
Evening and Night Work, November 1976	6329.0
Ex-service Personnel, November 1966; November 1971; October 1979	4403.0
Family Status and Employment Status of the Population, November 1974 and 1975	6223.0
Frequency of Pay—August 1974, 1976 and 1977	6320.0
Health Insurance, March 1979 and 1980	4335.0
Hearing and the Use of Hearing Aids, September 1978	4336.0
Home Ownership and Rental, November 1978	8710.0
Housing Occupancy and Costs, Australia, August 1980	8724.0
Income Distribution, 1968-69 (Consolidated and Revised Edition)	6505.0
Income Distribution, 1973-74—	
Part 1 (Tables relating to individuals)	6502.0
Part 2 (Tables relating to families)	6503.0
Part 3 (Supplementary Tables)	6504.0
Internal Migration—	
Conducted each year since 1970 (except 1976); Latest issue, 1980	3408.0
Job Tenure—February 1974; February 1975; August 1976	6211.0
Journey to Work and Journey to School—May 1970; August 1974	9205.0
Labour Force Experience—	
During 1968; 1972; 1974; 1975; 1976; 1978; 1979	6206.0
Twelve Months to February 1981 (Preliminary)	6205.0
Labour Force Status and Other Characteristics of Families, November 1974; July 1979 and 1980	6224.0
Labour Mobility—	
November 1972; February 1975, 1976, 1979 and 1980	6209.0
February 1981 (Preliminary)	6208.0
Migrants in the Labour Force, 1972 to 1976(b)	6230.0
Multiple Jobholding—	
November 1965; August 1966 and 1967; May 1971; August 1973, 1975, 1977 and 1979	6216.0
National Energy Survey, Household Appliances, Facilities and Insulation, Australia, November 1980	8212.0
Non-School Study Courses, Survey of, August 1968	Not listed
Persons Ceasing Full-time Work, Australia, May 1980	6238.0
Persons Covered by Hospital and Medical Expenditure Assistance Schemes, August 1972	4303.0
Persons Aged 15 to 64 Years: Employment Status and Period Since Leaving School, May 1976	6225.0
Persons Not in the Labour Force (including Discouraged Jobseekers)—	
November 1975; May 1977; March 1979; September 1979; March 1980; September 1980; March 1981	6220.0
Persons Looking for Work—	
May 1976; November 1976; May 1977; July 1978, 1979 and 1980	6222.0
June 1981 (Preliminary)	6221.0
School Leavers, 1970 to 1974: Their Employment Status and Education Experience in May 1975	6226.0
Superannuation, Survey of, February 1974	6319.0
The Labour Force: Country of Birth and Period of Residence, February 1972	6207.0
The Labour Force: Educational Attainment, Australia, February 1979, 1980	6235.0
Trade Union Members, November 1976	6325.0
Transition From Education to Work (Including leavers from schools, universities, and other educational institutions). Conducted each year since 1964. Previously titled 'Leavers from Schools, Universities and other Educational Institutions'. Latest Issue May 1981	6227.0
Weekly Earnings of Employees (Distribution) August 1975 to August 1980 (annually)	6310.0
Work Patterns of Employees, November 1976	6328.0

(a) Results of this survey are contained in the Appendix to the May 1981 issue of this publication. (b) Estimates derived from labour force surveys. For more recent estimates, see the relevant tables in this publication.

SUPPLEMENTARY AND SPECIAL SURVEYS—*continued*

<i>Title</i>	<i>Catalogue No.</i>
Supplementary surveys—<i>continued</i>	
States	
Status of Immunity to Diphtheria and Poliomyelitis, Children aged 2 months and under 3 years, and 6 or 7 years, February 1972 (New South Wales)	4304.1
Superannuation, Victoria, May 1968	Not listed
Employed Married Women in the Labour Force, November 1979 (Queensland)	6203.3
Domestic Appliance and Energy Usage, South Australia, April 1979	8207.4
Housing Survey, Victoria, November 1979	8707.2
Housing Intentions of South Australians, November 1979	8705.4
Use of Health Services, South Australia, 1971	4031.4
Post School Qualifications of Tradesmen and Other Employed Persons, New South Wales, November 1979	6202.1
Private Water Bores or Wells (Perth Statistical Division), Western Australia, November 1979	8708.5
Household Energy Sources, Tasmania, August 1975; June 1978; November 1979	8204.6
Special surveys	
Dental Health (persons aged 15 years or more), February-May 1979	4339.0
Educational Experience and Intentions Survey, Australia, 1979 (Preliminary)	4211.0
Employment Benefits, February to May 1979 (Preliminary)	6332.0
Income Distribution, Australia, 1978-79:	
Individuals	6502.0
Families (Preliminary)	6506.0
Income Units (Preliminary)	6522.0
Unemployed Persons	6521.0
Sight, Hearing and Dental Health (persons aged 2 to 14 years), February-May 1979	4337.0
Sight Problems and the use of Glasses/Contact Lenses (persons aged 15 years or more), February-May 1979	4338.0
Survey of Handicapped Persons, Australia, February-May 1981 (Preliminary)	4342.0
Survey of Persons Registered with the CES as Unemployed, March 1977	6229.0
Working Conditions, February to May 1979 (Preliminary)	6333.0

PART 2. GOVERNMENT EMPLOYMENT

EXPLANATORY NOTES

This part contains details of the numbers of employees of government bodies. Figures for months prior to May 1980 were published in *Civilian Employees, Australia* (6213.0) but, as that publication was discontinued following the April 1980 issue (see paragraphs 6 to 11 below), government employment figures are now included in publications 6202.0 and 6203.0.

2. Government employees comprise not only administrative employees but also all other employees of government bodies (Commonwealth, State, local and semi-government) on services such as railways, road transport, banks, postal and telecommunications, air transport, education (including universities, colleges of advanced education, etc.), radio, television, police, public works, factories, marketing authorities, public hospitals (other than those run by charitable or religious organisations) and departmental hospitals and institutions.

3. The numbers of employees shown in this part have been derived from returns obtained from government bodies. Generally, Commonwealth government employees are included in the figures if they are on the payroll on the last working day of the month, whereas for State and local government the reporting date is usually the last day of the last pay period ending in the month.

4. Data shown for defence forces include all permanent defence personnel in Australia and overseas. Other government employees based overseas are excluded, as are employees of foreign governments in Australia.

Comparability of Labour Force Survey Estimates and Government Employment Figures

5. The government employment figures shown in this part are not strictly comparable with the labour force survey estimates included in Part 1 of this publication and in other ABS publications. Persons in the survey are allocated to an appropriate labour force category according to their activity during the survey week. If they had more than one job in that week only the job in which they usually worked the greater number of hours is considered. The government employment figures are derived from direct returns from government bodies, and although some returns are adjusted to exclude some part-time employees considered to have full-time jobs elsewhere, some persons will be included even though their government job is not their main one. Other reasons for difference are that the survey estimates are subject to sampling variability, and the reference periods of the two collections are different.

Review of ABS Employment Statistics

6. The two principal series of employment statistics produced by the ABS have been the employment series derived from the labour force survey (based on a sample of households) and the civilian employees series derived from data obtained from employers' payroll records (mainly payroll tax returns, in the case of the private sector). The former series has provided estimates of total

employment and information on the characteristics of employed persons (including employers and self-employed). The latter has provided estimates for wage and salary earners only, but with a dissection of employment by industry more detailed than that provided by the labour force survey.

7. The series have differed in coverage, definition, sources of information, methods of collection and estimation procedures. The survey estimates are subject to sampling variability and both series are subject to non-sampling errors. The payroll-based civilian employees series has suffered from the particular problem that, because of limits below which payroll tax is not levied, no information has been available to the ABS about changes in the employment levels of the large number of smaller businesses which are not liable for payroll tax. Without current information, employment for these small businesses has generally been assumed to vary in proportion to the variation in the employment of larger employers. This assumption has long been regarded by the ABS as unsatisfactory.

8. The civilian employees series and the labour force survey series have frequently displayed different movements, but from late in 1979 the survey-based series grew much more rapidly than the payroll-based series. This growing divergence led to the decision by the Australian Statistician in July 1980 that publication of the civilian employees series should be suspended and that the ABS should undertake a review of the series and also of some aspects of the employment series derived from the labour force survey.

9. Following the review and discussions held with a number of Commonwealth and State Departments which are users of the statistics, the Statistician concluded that payroll tax returns could no longer provide an adequate basis for estimates of numbers of civilian employees and wages and salaries paid. Instead it would be necessary to conduct a quarterly sample survey of about 20,000 business units in the private sector, to collect information about the number and earnings of their employees. The survey results will be supplemented by the information collected from government bodies.

10. The lead time for the development of the survey will be between one and two years. The survey questionnaire and methodology will require field testing, mainly to ensure that response burden and non-sampling errors are kept to a minimum. In addition, the coverage of small businesses in the ABS register of businesses will need to be improved, in order to provide a satisfactory sample frame for the survey.

11. For further details on the review of the employment Statistics and the future course of action to be followed by the ABS see *Information Paper: Review of ABS Employment Statistics* (6239.0).

Inquiries

12. For more information about these statistics contact Mr Terry Sharp on Canberra (062) 52 6655.

TABLE 35. GOVERNMENT EMPLOYEES, AUSTRALIA(a)
(Excluding agriculture and services to agriculture)
(* 000)

Month	Civilian employees				Total	Defence forces(b)	Total Government
	Commonwealth	State	Northern Territory	Local			
MALES							
<i>1980—</i>							
August	276.1	583.0	7.5	103.0	969.6	67.5	1,037.1
September	276.1	582.7	7.5	103.0	969.3	67.6	1,036.9
October	276.4	581.8	7.5	102.9	968.6	67.7	1,036.3
November	276.4	581.5	7.6	102.9	968.3	67.6	1,035.9
December	277.9	580.7	7.5	103.4	969.5	67.3	1,036.8
<i>1981—</i>							
January	278.2	580.2	7.6	103.8	969.6	67.9	1,037.5
February	278.3	581.8	7.5	103.2	970.8	68.0	1,038.8
March	278.3	582.7	7.6	103.7	972.3	68.1	1,040.4
April	278.3	583.3	7.7	103.1	972.5	68.1	1,040.6
May	277.9	583.0	7.7	103.0	971.6	68.1	1,039.7
June	277.8	582.0	7.7	102.5	970.0	68.2	1,038.2
July	276.9	579.3	7.7	102.8	966.7	68.1	1,034.8
August	276.7	578.8	7.7	103.0	966.2	68.0	1,034.2
September	276.3	579.3	7.7	103.0	966.3	68.0	1,034.3
FEMALES							
<i>1980—</i>							
August	122.4	411.5	6.6	26.3	566.8	4.3	571.1
September	122.4	414.5	6.6	26.5	570.0	4.4	574.4
October	122.8	415.8	6.6	26.8	572.1	4.4	576.5
November	123.3	415.9	6.6	27.3	573.1	4.5	577.6
December	124.5	412.5	6.6	27.5	571.1	4.4	575.5
<i>1981—</i>							
January	124.3	401.0	6.5	26.6	558.5	4.4	562.9
February	124.9	414.5	6.5	27.6	573.6	4.4	578.0
March	125.6	418.9	6.6	27.8	578.8	4.4	583.2
April	125.6	420.8	6.6	27.7	580.7	4.4	585.1
May	125.5	419.1	6.6	27.7	579.0	4.3	583.3
June	125.0	418.2	6.6	27.7	577.6	4.3	581.9
July	126.1	418.1	6.7	27.9	578.7	4.4	583.1
August	126.6	419.2	6.7	28.0	580.4	4.4	584.8
September	126.7	420.4	6.6	28.2	582.0	4.5	586.5
PERSONS							
<i>1980—</i>							
August	398.5	994.5	14.1	129.3	1,536.4	71.8	1,608.2
September	398.5	997.2	14.1	129.4	1,539.3	72.0	1,611.3
October	399.2	997.7	14.1	129.7	1,540.6	72.1	1,612.7
November	399.7	997.4	14.1	130.2	1,541.4	72.1	1,613.5
December	402.4	993.2	14.1	130.9	1,540.6	71.7	1,612.3
<i>1981—</i>							
January	402.5	981.2	14.1	130.3	1,528.1	72.3	1,600.4
February	403.2	996.4	14.1	130.8	1,544.3	72.4	1,616.7
March	403.9	1,001.6	14.2	131.4	1,551.1	72.5	1,623.6
April	403.9	1,004.1	14.3	130.8	1,553.1	72.5	1,625.6
May	403.4	1,002.1	14.3	130.7	1,550.5	72.4	1,622.9
June	402.8	1,000.2	14.3	130.2	1,547.5	72.5	1,620.0
July	403.0	997.4	14.3	130.7	1,545.4	72.5	1,617.9
August	403.4	997.9	14.4	131.0	1,546.6	72.5	1,619.1
September	403.0	999.7	14.3	131.2	1,548.2	72.5	1,620.7

(a) See Explanatory notes, page 32. (b) Permanent defence forces in Australia and overseas.

TABLE 36. GOVERNMENT EMPLOYEES, STATES(a)
(Excluding agriculture and services to agriculture)
(* 000)

Month	Commonwealth(b)			State			Local			Total(b)		
	Males	Females	Persons	Males	Females	Persons	Males	Females	Persons	Males	Females	Persons
NEW SOUTH WALES												
1980—												
August	86.7	38.4	125.1	195.6	140.3	335.9	48.3	8.0	56.3	330.6	186.7	517.3
September	86.6	38.2	124.8	195.4	141.2	336.6	48.2	8.0	56.2	330.1	187.4	517.6
October	86.8	38.6	125.4	195.2	142.5	337.7	47.8	8.2	56.0	329.8	189.3	519.0
November	86.7	38.7	125.4	195.1	142.8	337.8	48.0	8.3	56.2	329.7	189.8	519.5
December	87.4	39.3	126.8	195.4	141.7	337.1	48.0	8.5	56.4	330.8	189.5	520.3
1981—												
January	87.3	39.3	126.6	195.1	136.8	331.9	48.1	8.5	56.5	330.5	184.6	515.0
February	87.3	39.4	126.7	195.3	143.2	338.5	48.0	8.4	56.4	330.6	191.0	521.6
March	87.2	39.6	126.8	195.9	144.4	340.4	48.1	8.5	56.6	331.2	192.6	523.7
April	87.1	39.6	126.7	196.3	145.1	341.5	47.7	8.4	56.1	331.1	193.2	524.3
May	87.0	39.7	126.7	195.8	144.9	340.7	47.8	8.4	56.3	330.7	193.0	523.7
June	86.9	39.5	126.4	195.2	143.8	339.0	47.7	8.4	56.1	329.8	191.7	521.5
July	86.8	39.9	126.6	194.3	143.8	338.1	47.8	8.5	56.3	328.9	192.2	521.1
August	86.6	39.8	126.4	194.1	144.5	338.7	47.8	8.6	56.4	328.5	193.0	521.5
September	86.4	39.8	126.2	194.7	145.1	339.8	47.8	8.7	56.5	328.9	193.6	522.5
VICTORIA												
1980—												
August	69.0	28.8	97.8	154.1	109.0	263.2	20.7	11.9	32.7	243.9	149.7	393.6
September	69.1	28.7	97.8	154.0	109.5	263.5	20.8	12.0	32.7	243.8	150.2	394.0
October	69.1	28.9	98.0	153.9	109.9	263.8	20.8	12.1	33.0	243.8	150.9	394.7
November	69.0	28.8	97.8	154.2	109.7	263.9	20.7	12.5	33.1	243.9	151.0	394.9
December	69.3	29.3	98.6	154.8	109.4	264.2	21.0	12.4	33.4	245.1	151.0	396.1
1981—												
January	69.6	29.1	98.6	155.3	108.5	263.8	21.1	11.5	32.6	246.0	149.1	395.1
February	69.6	29.2	98.8	155.1	109.9	265.1	21.1	12.5	33.6	245.8	151.6	397.4
March	69.5	29.2	98.7	155.2	111.3	266.5	21.1	12.6	33.7	245.7	153.1	398.8
April	69.4	29.1	98.6	154.8	112.2	266.9	21.0	12.6	33.5	245.2	153.9	399.0
May	69.3	29.0	98.2	154.5	111.2	265.6	21.0	12.6	33.5	244.7	152.7	397.4
June	69.3	28.8	98.1	154.4	110.9	265.3	21.0	12.5	33.5	244.7	152.2	396.9
July	69.1	29.1	98.1	153.9	111.1	265.0	20.9	12.6	33.5	243.9	152.8	396.9
August	69.3	29.5	98.8	153.7	111.3	264.9	20.9	12.6	33.4	243.8	153.3	397.2
September	69.2	29.6	98.8	153.2	111.6	264.8	20.9	12.7	33.5	243.3	153.9	397.1
QUEENSLAND												
1980—												
August	30.3	13.2	43.4	95.3	53.9	149.1	18.5	2.5	21.0	144.1	69.5	213.5
September	30.3	13.3	43.6	95.2	55.4	150.6	18.6	2.5	21.2	144.1	71.2	215.3
October	30.3	13.3	43.5	94.8	55.6	150.4	18.7	2.5	21.3	143.8	71.4	215.2
November	30.4	13.4	43.8	94.7	55.5	150.2	18.6	2.6	21.2	143.7	71.5	215.2
December	30.7	13.6	44.3	93.7	54.9	148.6	18.8	2.5	21.4	143.3	71.1	214.3
1981—												
January	30.6	13.5	44.1	93.5	54.7	148.2	18.9	2.6	21.5	143.0	70.8	213.9
February	30.7	13.7	44.4	94.9	55.3	150.1	18.4	2.6	21.0	144.0	71.6	215.6
March	30.9	13.9	44.7	95.3	56.4	151.7	18.8	2.6	21.5	145.0	72.9	217.9
April	31.0	13.9	44.9	96.0	56.3	152.3	18.9	2.6	21.5	145.8	72.9	218.7
May	31.0	13.9	44.9	96.7	56.4	153.1	18.7	2.7	21.3	146.4	73.0	219.4
June	31.0	13.8	44.8	96.5	56.4	152.8	18.5	2.7	21.2	146.0	72.8	218.8
July	30.9	13.9	44.8	95.7	56.1	151.8	18.6	2.7	21.3	145.2	72.7	217.9
August	30.9	14.1	45.0	95.7	56.1	151.8	19.0	2.7	21.7	145.6	72.9	218.5
September	30.9	14.1	45.0	96.1	56.4	152.6	18.9	2.7	21.6	145.9	73.3	219.2

For footnotes see end of table.

TABLE 36. GOVERNMENT EMPLOYEES, STATES(a)—continued
(Excluding agriculture and services to agriculture)
(' 000)

Month	Commonwealth(b)			State			Local			Total(b)		
	Males	Females	Persons	Males	Females	Persons	Males	Females	Persons	Males	Females	Persons
SOUTH AUSTRALIA												
1980—												
August	29.9	8.3	38.2	54.7	47.3	102.0	5.3	1.5	6.8	89.9	57.1	147.0
September	29.8	8.3	38.1	54.6	47.3	101.9	5.4	1.5	6.9	89.8	57.0	146.9
October	29.8	8.3	38.0	54.5	47.2	101.7	5.4	1.5	6.9	89.7	57.0	146.6
November	29.8	8.3	38.1	54.5	47.5	102.0	5.4	1.6	7.0	89.7	57.3	147.0
December	29.7	8.3	38.1	54.2	46.4	100.6	5.4	1.6	7.0	89.4	56.3	145.7
1981—												
January	29.8	8.3	38.1	53.8	42.7	96.5	5.5	1.6	7.0	89.0	52.6	141.6
February	29.7	8.4	38.1	53.7	46.5	100.2	5.4	1.6	7.0	88.9	56.5	145.4
March	29.7	8.4	38.1	53.8	47.0	100.8	5.4	1.6	7.0	89.0	56.9	145.9
April	29.7	8.4	38.1	53.9	47.1	100.9	5.4	1.5	7.0	89.0	57.0	146.0
May	29.6	8.3	38.0	53.5	46.4	100.0	5.4	1.5	6.9	88.5	56.3	144.9
June	29.6	8.3	37.9	53.6	47.1	100.7	5.4	1.5	6.9	88.5	57.0	145.5
July	29.6	8.3	37.9	53.2	47.3	100.5	5.4	1.6	6.9	88.1	57.2	145.3
August	29.5	8.4	37.9	53.2	47.3	100.5	5.4	1.6	6.9	88.0	57.2	145.3
September	29.4	8.3	37.8	53.4	47.1	100.5	5.3	1.6	6.9	88.2	57.0	145.2
WESTERN AUSTRALIA												
1980—												
August	10.3	7.3	23.6	62.9	44.7	107.6	7.2	1.8	9.1	86.5	53.8	140.3
September	16.4	7.3	23.7	63.1	44.8	107.9	7.2	1.8	9.0	86.6	54.0	140.6
October	16.4	7.3	23.7	63.0	44.8	107.8	7.2	1.8	9.0	86.5	54.0	140.5
November	16.3	7.3	23.7	62.6	44.7	107.3	7.3	1.8	9.1	86.2	53.8	140.0
December	16.5	7.5	24.0	62.2	44.2	106.4	7.3	1.8	9.1	86.0	53.5	139.5
1981—												
January	16.5	7.4	23.9	62.0	42.4	104.5	7.2	1.8	9.1	85.7	51.7	137.4
February	16.4	7.4	23.9	62.2	43.6	105.8	7.3	1.9	9.1	85.9	52.9	138.8
March	16.4	7.5	24.0	62.0	43.8	105.7	7.3	1.9	9.1	85.7	53.2	138.8
April	16.4	7.6	24.0	62.0	44.0	106.0	7.2	1.9	9.1	85.6	53.4	139.0
May	16.4	7.6	24.0	62.1	44.0	106.1	7.2	1.9	9.0	85.7	53.4	139.1
June	16.4	7.5	23.9	62.0	44.1	106.1	7.1	1.9	8.9	85.5	53.5	139.0
July	16.4	7.7	24.1	61.9	43.9	105.8	7.2	1.9	9.0	85.5	53.5	139.0
August	16.4	7.8	24.2	61.8	44.0	105.8	7.2	1.9	9.0	85.4	53.6	139.0
September	16.3	7.7	23.9	61.6	44.0	105.6	7.2	1.9	9.1	85.1	53.6	138.6
TASMANIA												
1980—												
August	7.3	2.3	9.6	20.4	16.3	36.7	2.6	0.5	3.1	30.3	19.2	49.5
September	7.3	2.4	9.7	20.5	16.4	36.9	2.6	0.5	3.1	30.3	19.3	49.6
October	7.3	2.3	9.7	20.5	15.8	36.3	2.6	0.5	3.1	30.4	18.7	49.0
November	7.3	2.3	9.6	20.4	15.8	36.2	2.6	0.5	3.1	30.3	18.7	48.9
December	7.3	2.4	9.7	20.4	16.0	36.3	2.6	0.5	3.1	30.3	18.9	49.1
1981—												
January	7.3	2.4	9.7	20.5	15.8	36.3	2.6	0.5	3.2	30.4	18.7	49.2
February	7.4	2.4	9.8	20.6	16.0	36.6	2.6	0.5	3.2	30.6	19.0	49.5
March	7.5	2.4	9.8	20.5	16.0	36.5	2.6	0.6	3.2	30.6	18.9	49.5
April	7.4	2.4	9.8	20.4	16.1	36.5	2.6	0.5	3.2	30.5	19.0	49.5
May	7.4	2.4	9.7	20.4	16.3	36.6	2.6	0.5	3.2	30.3	19.2	49.5
June	7.3	2.3	9.7	20.2	16.0	36.2	2.6	0.5	3.1	30.2	18.8	49.0
July	7.3	2.4	9.7	20.2	15.9	36.1	2.6	0.5	3.1	30.1	18.8	48.9
August	7.3	2.4	9.7	20.2	16.0	36.2	2.5	0.5	3.1	30.1	18.9	49.0
September	7.3	2.4	9.7	20.2	16.2	36.4	2.5	0.5	3.1	30.1	19.1	49.2

(a) See Explanatory notes, page 32. (b) Excludes members of the permanent defence forces in Australia and overseas.

TABLE 37. GOVERNMENT EMPLOYEES—NORTHERN TERRITORY(a)
(Excluding agriculture and services to agriculture)
(' 000)

Month	Commonwealth(b)			Northern Territory			Local			Total(b)		
	Males	Females	Persons	Males	Females	Persons	Males	Females	Persons	Males	Females	Persons
<i>1980—</i>												
August	2.7	1.2	3.9	7.5	6.6	14.1	0.3	0.1	0.4	10.6	7.8	18.4
September	2.7	1.2	3.9	7.5	6.6	14.1	0.4	0.1	0.4	10.6	7.8	18.4
October	2.7	1.2	3.8	7.5	6.6	14.1	0.4	0.1	0.4	10.5	7.8	18.4
November	2.6	1.2	3.8	7.6	6.6	14.1	0.3	0.1	0.4	10.5	7.9	18.4
December	2.6	1.2	3.9	7.5	6.6	14.1	0.3	0.1	0.4	10.5	7.9	18.4
<i>1981—</i>												
January	2.6	1.2	3.9	7.6	6.5	14.1	0.4	0.1	0.5	10.6	7.8	18.4
February	2.7	1.2	3.9	7.5	6.5	14.1	0.4	0.1	0.5	10.5	7.9	18.4
March	2.6	1.2	3.8	7.6	6.6	14.2	0.3	0.1	0.5	10.6	7.9	18.5
April	2.6	1.2	3.9	7.7	6.6	14.3	0.4	0.1	0.5	10.7	7.9	18.6
May	2.6	1.2	3.9	7.7	6.6	14.3	0.4	0.1	0.5	10.7	8.0	18.6
June	2.7	1.2	3.9	7.7	6.6	14.3	0.4	0.1	0.5	10.7	8.0	18.7
July	2.6	1.3	3.9	7.7	6.7	14.3	0.4	0.1	0.5	10.7	8.0	18.7
August	2.6	1.2	3.9	7.7	6.7	14.4	0.4	0.1	0.5	10.7	8.0	18.7
September	2.6	1.3	3.9	7.7	6.6	14.3	0.4	0.1	0.5	10.7	8.0	18.7

(a) See Explanatory notes, page 32. (b) Excludes members of the permanent defence forces in Australia and overseas.

TABLE 38. GOVERNMENT EMPLOYEES—AUSTRALIAN CAPITAL TERRITORY(a)
(Excluding agriculture and services to agriculture)
(' 000)

Month	Commonwealth(b)		
	Males	Females	Persons
<i>1980—</i>			
August	33.9	23.0	56.9
September	34.0	23.0	57.0
October	34.1	23.0	57.2
November	34.3	23.2	57.4
December	34.2	22.9	57.1
<i>1981—</i>			
January	34.4	23.1	57.5
February	34.5	23.2	57.7
March	34.5	23.4	57.9
April	34.6	23.4	57.9
May	34.5	23.4	57.9
June	34.6	23.5	58.1
July	34.3	23.5	57.8
August	34.1	23.4	57.5
September	34.1	23.5	57.6

For footnotes, see previous table.

TABLE 39. COMMONWEALTH GOVERNMENT EMPLOYEES, SEPTEMBER 1981(a)
Part I—Staff (in Australia and overseas) employed under the Public Service Act (excluding Departments of the Parliament)

<i>Body</i>	<i>Males</i>	<i>Females</i>	<i>Persons</i>
Aboriginal Affairs	458	305	763
Administrative Services(b)	4,396	1,855	6,251
Australian Electoral Office	415	377	792
Australian Government Publishing Service	738	297	1,035
Attorney-General's(b)	888	1,191	2,079
Australian Legal Aid Office	75	105	180
Commissioner for Community Relations	9	15	24
Office of the Parliamentary Counsel	14	19	33
Business and Consumer Affairs(b)	3,818	1,264	5,082
Industries Assistance Commission	223	131	354
Petroleum Products Pricing Authority	41	11	52
Trade Practices Commission	110	71	181
Capital Territory	2,657	953	3,610
Communications(b)	520	222	742
Australian Broadcasting Tribunal	69	38	107
Special Broadcasting Service	131	116	247
Defence	19,892	6,827	26,719
Education(b)	695	818	1,513
A.C.T. Schools Authority	235	670	905
Curriculum Development Centre	15	22	37
Schools Commission	47	68	115
Tertiary Education Commission	52	45	97
Employment and Youth Affairs	3,431	2,768	6,199
Finance(b)	569	406	975
Australian Government Retirement Benefits Office	169	255	424
Foreign Affairs(b)	2,264	1,766	4,030
Australian Development Assistance Bureau	263	236	499
ADAB Aid Experts	93	13	106
Health(b)	2,283	2,588	4,871
Capital Territory Health Commission	311	760	1,071
Home Affairs and Environment(b)	209	181	390
Australian Archives	192	152	344
Australian Film Commission	98	43	141
Australian Heritage Commission	11	9	20
Australian National Parks and Wildlife Service	52	16	68
Australian War Memorial	78	44	122
Great Barrier Reef Marine Park Authority	20	17	37
National Library of Australia	203	466	669
Office of the Supervising Scientist	28	14	42
Housing and Construction	8,286	1,140	9,426
Immigration and Ethnic Affairs	1,040	935	1,975
Industrial Relations(b)	286	238	524
Industrial Relations Bureau	144	69	213
Industry and Commerce	2,996	909	3,905
National Development and Energy(b)	573	215	788
Bureau of Mineral Resources	413	126	539
Primary Industry(b)	2,525	349	2,874
Bureau of Agricultural Economics	221	72	293
Prime Minister and Cabinet(b)	326	285	611
Auditor-General's Office	487	134	621
Australian Science and Technology Council	7	4	11
Office of National Assessment	51	24	75
Ombudsman	24	27	51
Public Service Board	554	438	992
Science and Technology(b)	952	404	1,356
Bureau of Meteorology	1,413	244	1,657
Patents, Trade Marks and Designs Office	293	211	504
Social Security	5,636	7,385	13,021
Trade and Resources	801	433	1,234
Transport(b)	10,406	1,463	11,869
Bureau of Transport Economics	76	29	105
Treasury(b)	376	203	579
Australian Bureau of Statistics	2,585	1,953	4,538
Australian Taxation Office	7,286	5,780	13,066
Royal Australian Mint	291	78	369
Veterans' Affairs	5,095	7,067	12,162
Total under Public Service Act(c)	98,915	55,369	154,284

For footnotes see end of table.

TABLE 39. COMMONWEALTH GOVERNMENT EMPLOYEES, SEPTEMBER 1981(a)—continued
Part II—Staff (in Australia) employed under other Acts

<i>Body</i>	<i>Males</i>	<i>Females</i>	<i>Persons</i>
DEPARTMENTS			
Administrative Services (Australian Federal Police)	2,384	262	2,646
Defence (naval dockyards, factories, etc.)	4,258	88	4,346
Education	1,407	2,726	4,133
Health—(Capital Territory Health Commission)	519	2,286	2,805
Industry and Commerce (munitions factories, weapons research, etc.)	4,375	1,611	5,986
Other	173	115	288
<i>Total departments</i>	<i>13,116</i>	<i>7,088</i>	<i>20,204</i>
OTHER BODIES			
A.C.T. Electricity Authority	476	81	557
Australian Atomic Energy Commission	1,026	218	1,244
Australian Broadcasting Commission	4,367	1,850	6,217
Australian National Railways	10,597	579	11,176
Australian National University	2,213	1,675	3,888
Australian Postal Commission	27,094	8,296	35,390
Army and Air Force Canteens Service	147	233	380
Australian Shipping Commission	3,057	169	3,226
Australian Telecommunications Commission	70,438	22,507	92,945
C.S.I.R.O.	5,592	1,863	7,455
Canberra College of Advanced Education	569	497	1,066
Commonwealth Banking Corporation	16,208	15,735	31,943
Commonwealth Accommodation and Catering Services Ltd	662	1,597	2,259
Commonwealth Serum Laboratories Commission	675	357	1,032
Departments of the Parliament	454	310	764
Health Insurance Commission	518	1,552	2,070
National Capital Development Commission	263	103	366
Overseas Telecommunications Commission	2,045	392	2,437
Qantas Airways Ltd	9,294	2,133	11,427
Reserve Bank of Australia	2,000	1,662	3,662
Snowy Mountains Engineering Corporation	356	84	440
Snowy Mountains Hydro-Electric Authority	590	59	649
Trans-Australia Airlines	6,492	2,401	8,893
Other	2,448	1,820	4,268
<i>Total other bodies</i>	<i>167,581</i>	<i>66,173</i>	<i>233,754</i>
Total under other Acts(c)(d)	180,697	73,261	253,958

(a) Excludes members of the permanent defence forces. (b) Excludes branch(es) shown separately. (c) Includes 4,849 employees overseas and 2,828 part-time employees in Australia in September 1981. (d) The totals of employment under the Public Service Act and under other Acts differ from those shown for Commonwealth Government in Table 35 because, for persons employed under the Public Service Act, overseas staff are included; also some part-time employees are excluded from Table 35 in order to avoid double counting.

PART 3. JOB VACANCIES

Surveys of job vacancies were conducted in March each year from 1974 to 1978 and quarterly, by telephone, from May 1977 to May 1978, after which they were suspended. The quarterly surveys were reintroduced in May 1979. For further details and estimates for earlier periods see *Job Vacancies, Australia, August 1981* (6231.0).

A job vacancy is defined as a job available for immediate filling on the survey date and for which recruitment action has been taken by the employer. Jobs available only to existing employees of an organisation are excluded. In this context the Australian Public Service and the Public Services of the States and the Northern Territory are treated as 'organisations'.

For more information about these statistics, contact Mr Andy Johnston on Canberra (062) 52 6568 or any of our State offices.

TABLE 40. JOB VACANCIES
('000)

AUSTRALIA									
	August 1980	November 1980	February 1981	May 1981	August 1981	November 1981	Standard error		
For males	12.6	13.3	12.6	14.4	13.3	15.9	1.8		
For females	4.3	5.5	6.0	5.1	5.4	5.2	1.1		
For males or females	13.2	15.5	14.4	16.2	16.1	15.6	1.5		
Manufacturing	9.7	9.2	10.4	10.0	9.7	9.8	0.9		
Metal products, machinery and equipment	4.4	4.4	6.1	5.8	5.7	5.4	0.7		
Basic metal and fabricated metal products;									
other machinery, etc.	3.4	3.6	5.0	4.1	4.0	3.6	0.6		
Transport equipment	1.0	0.9	1.1	1.7	1.6	1.9	0.2		
Other manufacturing	5.2	4.7	4.3	4.2	4.0	4.3	0.7		
Other industries	20.4	25.1	22.6	25.7	25.0	26.9	2.4		
Mining	0.9	1.1	1.1	1.8	1.3	0.9	0.3		
Electricity, gas and water	0.5	1.2	1.3	1.2	1.1	0.9	0.1		
Wholesale and retail trade	4.0	4.4	4.1	5.4	5.6	7.0	1.5		
Transport and storage; communication	1.7	1.5	1.2	1.1	1.4	1.8	0.2		
Public administration; community services	9.0	8.6	7.7	9.7	9.1	8.8	1.3		
Other	4.4	8.3	7.1	6.6	6.5	7.4	1.3		
Total	30.1	34.3	33.0	35.7	34.7	36.7	2.6		
STATES AND TERRITORIES									
Month	N.S.W.	Vic.	Qld	S.A.	W.A.	Tas.	N.T.	A.C.T.	Australia
Total—									
1980—									
November	15.7	8.5	4.0	1.4	2.3	0.8	0.7	0.7	34.3
1981—									
August	18.3	8.1	2.8	0.9	(a)2.9	0.6	0.6	0.5	34.7
November	17.2	8.2	4.4	(a)2.0	2.9	0.7	0.6	0.7	36.7
Manufacturing—									
1980—									
November	4.0	3.3	(a)0.7	(a)0.7	0.3	*	—	—	9.2
1981—									
August	4.9	3.3	0.7	0.3	(a)0.4	(a)0.1	—	—	9.7
November	4.7	3.0	(a)0.7	0.8	*	0.1	—	—	9.8
Other industries—									
1980—									
November	11.7	5.2	3.3	0.7	2.0	0.7	0.7	0.7	25.1
1981—									
August	13.5	4.8	2.1	(a)0.6	(a)2.5	0.5	0.6	0.5	25.0
November	(a)12.5	5.2	3.7	*	2.4	(a)0.7	0.6	0.7	26.9
Government—									
1980—									
November	4.9	(a)3.5	2.1	(a)0.5	*	(a)0.4	0.4	0.7	13.3
1981—									
August	7.6	2.6	1.6	0.3	0.9	(a)0.4	0.3	0.4	14.0
November	5.1	3.5	2.0	0.4	1.2	(a)0.5	0.3	0.6	13.6
Private—									
1980—									
November	10.8	5.1	1.8	0.9	(a)1.6	(a)0.4	0.3	(a)0.1	21.0
1981—									
August	10.8	5.6	1.2	(a)0.6	(a)2.0	(a)0.2	(a)0.3	0.1	20.8
November	(a)12.1	4.7	2.4	(a)1.5	(a)1.7	(a)0.2	0.3	*	23.1

(a) Standard error greater than 20 per cent but less than 30 per cent.