



THE LABOUR FORCE AUSTRALIA

AUGUST 1981

CATALOGUE NO. 6203.0

AUSTRALIAN BUREAU OF STATISTICS Canberra

PHONE INQUIRIES *for more information about these statistics*—contact Mr Alan Sharp on Canberra (062) 52 6565 or any of our State offices.
other inquiries including copies of publications—contact Information Services on Canberra (062) 52 6627 or in any of our State offices.

MAIL INQUIRIES *write to* Information Services, ABS, P.O. Box 10, Belconnen, A.C.T. 2616 or any of our State offices.

CATALOGUE NO. 6203.0

NOON 30 OCTOBER 1981

THE LABOUR FORCE, AUSTRALIA, AUGUST 1981

CONTENTS

<i>Table</i>		<i>Page</i>
PART 1. LABOUR FORCE ESTIMATES		
..	Explanatory notes	1
..	Graphs	5
Civilian population aged 15 years and over: employment status		
1.	Australia	8
2.	Marital status	10
3.	States and Territories	10
4.	State capital cities	11
5.	Australian Capital Territory	11
Civilian population aged 15 to 24 years (single years): employment status		
6.	Aged 15 to 19 years: whether or not attending school	12
7.	Aged 20 to 24 years	12
Civilian labour force		
8.	Seasonally adjusted series	13
9.	Employment status and birthplace	14
10.	Born outside Australia, by employment status and period of arrival in Australia	15
11.	Age	16
12.	Participation rates, by age and birthplace	16
Employed persons		
13.	Full-time and part-time status, by age	<u>16</u>
14.	Industry by occupation	17
15.	Average hours worked by industry and occupation	18
16.	Married females by industry, occupation and hours worked	18
17.	Hours worked	19
18.	Occupational status of full-time and part-time workers	19
19.	Full-time workers who worked less than 35 hours, by reason	19
20.	Part-time workers, whether preferred to work more hours, and whether looking for full-time work, by age	20
21.	Part-time workers, whether preferred to work more hours, and whether looking for full-time work, by hours worked	20
22.	Employment/population ratios by age and marital status	21
Unemployed persons		
23.	Age: States	21
24.	Age and whether looking for full-time or part-time work	<u>22</u>
25.	Age and birthplace	<u>22</u>
26.	Duration of unemployment and age, etc.	23
27.	Industry and occupation of last full-time job and duration of unemployment	24
28.	Aged 15 to 19 years: duration of unemployment and whether or not attending school	24
29.	Active steps taken to find work, by age	25
Persons not in the labour force		
30.	Age and marital status, etc.	25
31.	Whether looking for work, etc.	25

CONTENTS—*continued*

<i>Table</i>		<i>Page</i>
PART 1. LABOUR FORCE ESTIMATES—<i>continued</i>		
Gross flows		
32.	Estimates, derived from matched records, of employment status in July and August 1981 and gross changes (flows)	26
Technical note		
	Estimation procedure	27
	Reliability of the estimates	27
Supplementary and special surveys		
		29
NOTE. Some additional labour force survey data are included in other issues of this publication or are available on request. For details see paragraph 38 of the Explanatory notes.		
PART 2. GOVERNMENT EMPLOYMENT		
..	Explanatory notes	31
Government employees (excluding agriculture and services to agriculture)		
33.	Australia, May 1980 to June 1981	32
34.	States, May 1980 to June 1981	33
35.	Northern Territory, May 1980 to June 1981	35
36.	Australian Capital Territory, May 1980 to June 1981	35
37.	Commonwealth Government employees, June 1981	36
PART 3. JOB VACANCIES		
NOTE. Estimates of job vacancies are published in the February, May, August and November issues of this publication.		
38.	Job vacancies, August 1981	38

PART 1. LABOUR FORCE ESTIMATES

EXPLANATORY NOTES

Introduction

This part contains estimates of the civilian labour force derived from the population survey, which is now conducted monthly. Until February 1978, surveys were conducted in February, May, August and November each year.

2. A summary of the survey results is published in advance of this more detailed publication in *The Labour Force, Australia (Preliminary)* (6202.0). Preliminary unemployment estimates are also issued in advance of this publication in *Unemployment, Australia (Preliminary Estimates)* (6201.0).

3. Although emphasis in the survey is placed on the regular collection of data on demographic and labour force characteristics of the population, supplementary and special surveys of particular aspects of the labour force or of other subjects are carried out from time to time. Statistics from these surveys are published and are available free on request. A list of titles is given on pages 29 and 30.

The population survey

4. The survey is based on a multi-stage area sample of private dwellings (about 30,000 houses, flats, etc.) and non-private dwellings (hotels, motels, etc.), and covers about two-thirds of one per cent of the population of Australia. The information is obtained from the occupants of selected dwellings by carefully chosen and specially trained interviewers. The interviews are generally conducted during the two weeks beginning on the Monday between the 6th and 12th of each month. The information obtained relates to the week before the interview (i.e. the survey week). Because of operational problems arising from the Christmas and New Year holidays the December 1978 and 1979 surveys commenced a week earlier than usual (with most interviews being conducted during the second week) and the January 1979 and 1980 surveys commenced a week later than usual.

Scope

5. The survey includes all persons aged 15 years and over except:

- (a) members of the permanent defence forces;
- (b) certain diplomatic personnel of overseas governments, customarily excluded from census and estimated populations;
- (c) overseas visitors holidaying in Australia; and
- (d) members of non-Australian defence forces (and their dependants) stationed in Australia.

Definitions

6. The labour force category to which a person is assigned depends on his *actual activity* (i.e. whether working, looking for work, etc.) during the survey week. The following definitions, which conform closely to the international standard definitions specified by the International Labour Organisation (ILO), relate only to those persons within the scope of the survey.

7. *Employed persons* comprise all those aged 15 years and over who, during the survey week:

- (a) worked for one hour or more for pay, profit, commission or payment in kind in a job or business, or on a farm (including employees, employers and self-employed persons); or
- (b) worked for 15 hours or more without pay in a family business or on a farm (i.e. unpaid family helpers); or
- (c) were employees who had a job but were not at work and were: on paid leave; on leave without pay for less than four weeks up to the end of the survey week; stood down without pay because of bad weather or plant breakdown at their place of employment for less than four weeks up to the end of the survey week; on strike or locked out; on workers' compensation and expected to be returning to their job; or receiving wages or salary while undertaking full-time study; or
- (d) were employers or self-employed persons who had a job, business or farm, but were not at work.

8. The *employment/population ratio* for any group is the number of employed persons expressed as a percentage of the civilian population aged 15 years and over in the same group.

9. *Unemployed persons* are those aged 15 years and over who were not employed during the survey week, and

- (a) had actively looked for full-time or part-time work at any time in the four weeks up to the end of the survey week and:
 - (i) were available for work in the survey week, or would have been available except for temporary illness (i.e. lasting for less than four weeks to the end of the survey week); or
 - (ii) were waiting to start a new job within four weeks from the end of the survey week and would have started in the survey week if the job had been available then;

or (b) were waiting to be called back to a full-time or part-time job from which they had been stood down without pay for less than four weeks up to the end of the survey week (including the whole of the survey week) for reasons other than bad weather or plant breakdown.

10. *Actively looking for work* includes checking or registering with the Commonwealth Employment Service or other employment agencies; writing, telephoning or applying in person to an employer; answering a newspaper advertisement for a job; advertising or tendering for work; contacting friends or relatives; and looking on factory or employment service notice boards.

11. *Unemployed persons looking for first job* are those who had never worked for two weeks or more in a full-time job. Prior to November 1977 it comprised persons who had never had a job.

12. The *unemployment rate* for any group is the number unemployed expressed as a percentage of the labour force (i.e. employed plus unemployed) in the same group.

13. *Duration of unemployment* is the period from the time the person began looking for work or was laid off to the end of the survey week. Periods of unemployment are recorded in complete weeks and this results in a slight understatement of duration. *Average (mean) duration* is the duration obtained by dividing the aggregate number of weeks a group has been unemployed by the number of persons in that group. *Median duration* is the duration which divides unemployed persons into two equal groups, one comprising persons whose duration of unemployment is above the median and the other, persons whose duration is below it. Medians are calculated from group data, linear interpolation being used within the group which contains the median.

14. The *labour force* comprises all persons who, during the survey week, were employed or unemployed, as defined in paragraphs 7 and 9.

15. The *labour force participation rate* for any group is the labour force expressed as a percentage of the civilian population aged 15 years and over in the same group. Because it is not practicable to ascertain the birthplace of persons in institutions (who are classified as not in the labour force), labour force participation rates for persons classified by birthplace are calculated by using population estimates which exclude those in institutions.

16. *Full-time workers* are those who usually work 35 hours or more a week and others who, although usually part-time workers, worked 35 hours or more during the survey week. *Part-time workers* are those who usually work less than 35 hours a week and who did so during the survey week. When recording hours of work, fractions of an hour are disregarded.

17. *Hours of work*. The figures of aggregate hours and of average hours refer to actual hours worked during the survey week, not hours paid for. The figures may be affected by public holidays, leave, absenteeism; temporary absence from work due to sickness, injury, accident and industrial disputes; and stoppages of work due to bad weather, plant breakdown, etc. When hours of work are recorded, fractions of an hour are disregarded and this results in slightly lower figures than would be the case if actual time worked was recorded. Persons stood down for the whole of the survey week without pay because of bad weather or plant breakdown at their place of employment are regarded as employed and therefore are included (working no hours) in the calculation of average hours worked. Persons stood down in the survey week for reasons other than bad weather and plant breakdown and waiting to be called back to their job are regarded as unemployed and are therefore excluded from the calculation.

18. *Persons attending school* comprise those aged 15 to 20 years who, during the survey week, were enrolled full-time at secondary or high schools. Excluded are persons who were enrolled at universities, colleges of advanced education, technical colleges, other tertiary education institutions, and coaching and business schools.

Persons attending school are classified as in the labour force if they were employed or unemployed as defined in paragraphs 7 and 9. Because it is not practicable to ascertain from persons in institutions (who are classified as not in the labour force) whether or not they are enrolled at secondary or high schools, such persons are excluded from estimates classified by school attendance.

19. *Persons not in the labour force* are those who, during the survey week, were not in the categories 'employed' or 'unemployed', as defined in paragraphs 7 and 9. They include persons who were keeping house (unpaid), attending an educational institution (school, university, etc.), retired, voluntarily inactive, permanently unable to work, inmates of institutions (hospitals, gaols, sanatoria, etc.), trainee teachers, members of contemplative religious orders, and persons whose only activity during the survey week was jury service or unpaid voluntary work for a charitable organisation.

Occupational status

20. The February, May, August and November issues of this publication include a table showing estimates of employed persons, obtained from the labour force survey, classified by occupational status, i.e. whether they were employers, self-employed persons, wage and salary earners (employees), or unpaid family helpers (who worked 15 hours or more in the survey week).

Classification of industry and occupation

21. Industry is classified according to the *Australian Standard Industrial Classification (ASIC), 1978* and occupation according to the *Classification and Classified List of Occupations, Revised June 1976*.

State capital cities

22. The areas determining the six State capital cities are the Statistical Divisions for those capital cities defined in *Census of Population and Housing 1976, Population and Dwellings in Local Government Areas and Urban Centres (Preliminary)* (2401.0-2408.0)

Population benchmarks

23. The population survey estimates are calculated in such a way as to conform to the independently estimated distribution of the population aged 15 years and over by age and sex. These independent estimates (benchmarks) are necessarily derived from incomplete information about population changes (deaths, internal and overseas migration) and can differ from estimates of the population subsequently published by the ABS. For estimates of the population and other demographic statistics reference should be made to *Australian Demographic Statistics Quarterly* (3101.0).

Revision of series

24. Survey estimates are not revised for the usually small amendments of population benchmarks arising from new data on deaths and overseas and internal migration. Revisions are made, however, after each census and when population estimation bases are reviewed. Survey estimates back to August 1966 have been recalculated to conform to revised population estimates. The estimates take account of results of the 1966, 1971 and 1976 population censuses, including estimates of under-enumeration, and incorporate a revised method of measuring overseas migration gain (i.e. by excluding movements of less than one year's duration). For information concerning these population estimates for the period June 1971 to June 1977 see *Population and Vital Statistics, Australia, June Quarter 1977* (3212.0).

25. *The new sample and revised questionnaire.* Survey estimates for February 1978 and subsequent months have been obtained by using a new sample and revised questionnaire. The new sample was selected in order to reflect the changes in the distribution of the population shown by the 1976 Population Census results. The questionnaire, which had undergone little change since 1960, except for the inclusion in 1975 of additional questions on job-seeking, was revised to provide more accurate and more detailed information concerning the labour force.

26. Copies of both the current questionnaire and the one previously used, together with a description of the main features of the questionnaire, are contained in *Information Paper: Questionnaires used in the Labour Force Survey* (6232.0).

27. Estimates for the period August 1966 to November 1977 have been revised in order to provide a series for earlier periods as comparable as possible with the February 1978 and later estimates. For periods prior to August 1976, detailed revised estimates are available only for August of each year. For February, May and November only broad revised aggregates (as in Table 1) are available. Revised estimates have been published in *The Labour Force, Australia, 1978* (6204.0), which also contains information concerning the methods used in the revision.

Comparability of series

28. When comparing estimates for February 1978 and subsequent months with those for earlier periods, it should be noted that with the introduction of monthly surveys the interviews are now conducted during a two-week period, whereas formerly the period was four weeks. This change of timing may affect the level of the figures for any month, but particularly for months during which the employment status of the population may be changing rapidly.

29. Because of the revisions, the estimates in this publication are not comparable with those shown in issues before February 1978 or in the special publications entitled *The Labour Force* (6204.0) covering the period 1964 to 1977.

30. From September 1979, industry estimates in labour force survey publications have been classified according to the 1978 version of the Australian Standard Industrial Classification (ASIC). The estimates are therefore not strictly comparable with those for periods prior to September 1979, which were classified according to the 1969 version of ASIC.

Reliability of the estimates

31. Since the estimates in this section are based on information obtained from occupants of a sample of dwellings they are subject to sampling variability; that is, they may differ from the figures that would have been produced if all dwellings had been included in the survey. An indication of the likely differences is given in the Technical note.

Differences between population census and population survey estimates

32. The results of the 1976 Population Census show that labour force figures derived from the census differ from estimates derived from the population surveys of May and August 1976.

33. The labour force definition used in the population census is similar to that used in the survey. (See paragraphs 6 to 19.) However, evidence from census post-enumeration surveys indicates that the personal interview approach, as used in the population survey, tends to identify a larger number of persons as being in the labour force than does the filling in of the questions on the census schedule by the householder. In addition, the post-enumeration survey following the 1976 Census showed an under-enumeration of the population of 2.71 per cent. It has not been possible to adjust the published census labour force figures for any under-enumeration.

34. In the 1971 and 1976 Censuses the minor occupation group 'Architects, engineers, surveyors, professional' was limited solely to persons holding a university degree. Other persons describing themselves in professional terms but not holding a degree were classified to minor group 'Draftsmen and technicians, n.e.c.'. Information to enable this distinction to be made in the labour force survey is not available.

35. These considerations should be borne in mind if comparisons are made between census and labour force survey estimates.

Seasonal adjustment

36. The move to the higher level of unemployment since 1974 appears to have been accompanied by shifts in the pattern of seasonal variation. For this reason the publication of seasonally adjusted figures of unemployment was suspended as from November 1977. The matter will be kept under review.

37. Seasonally adjusted quarterly estimates of employed persons, the labour force and labour force participation rates are published in the February, May, August and November issues. The seasonally adjusted figures are revised annually. A table of the latest seasonally adjusted estimates is published in this issue. Estimates for earlier periods are published in *Seasonally Adjusted Indicators, Australia, 1981* (1308.0) which also contains information on seasonal adjustment methods, etc. Calculation of seasonally adjusted monthly figures is not yet possible.

Additional tables

38. Labour force estimates for employed persons classified by industry and occupation and for seasonally adjusted series, are available only each quarter. Estimates relating to these characteristics are included in only some issues of this publication, as shown below.

February, May, August and November—

Average weekly hours worked: Industry and occupation

Employed persons: Occupational status of full-time and part-time workers

Employed married females: Industry and occupation by hours worked

Seasonally adjusted series.

The following estimates are available for February, May, August and November but are published only for the months shown.

February—

Employed persons—

- Industry and marital status
- Industry and birthplace
- Occupation and marital status
- Occupation and birthplace

May—

Employed persons: Occupation—major and minor groups

Employed persons: Hours worked, by industry

August—

Employed persons: Industry by occupation

November—

Employed persons—

- Industry by full-time and part-time status
- Occupation by full-time and part-time status
- Industry by age.

Other unpublished data from labour force surveys may be available on request.

39. Estimates of job vacancies are published in the February, May, August and November issues of this publication.

Related publications

40. Users may also wish to refer to the following publications which are available on request:

Unemployment, Australia (Preliminary Estimates) (6201.0)—issued monthly

The Labour Force, Australia (Preliminary) (6202.0)—issued monthly

The Labour Force, Australia, 1980 (6204.0)

Unemployment, Underemployment and Related Statistics, Australia, February 1978 to February 1980 (6236.0)

The Labour Force, New South Wales (6201.1)—issued quarterly

The Labour Force, Victoria (6201.2)—issued monthly

The Labour Force, Queensland (6201.3)—issued quarterly

The Labour Force, South Australia (6201.4)—issued quarterly

Information Paper: Questionnaires used in the Labour Force Survey (6232.0)

Civilian Employees, Australia (6213.0)—latest issue: April 1980

Job Vacancies, Australia (6231.0)—issued quarterly

Overtime, Australia (6330.0)—issued monthly

Information Paper: Review of ABS Employment Statistics (6239.0).

Supplementary and special survey publications are listed on pages 29 and 30.

41. Current publications produced by the ABS are listed in the *Catalogue of Publications, Australia* (1101.0) which is available free of charge from any ABS office.

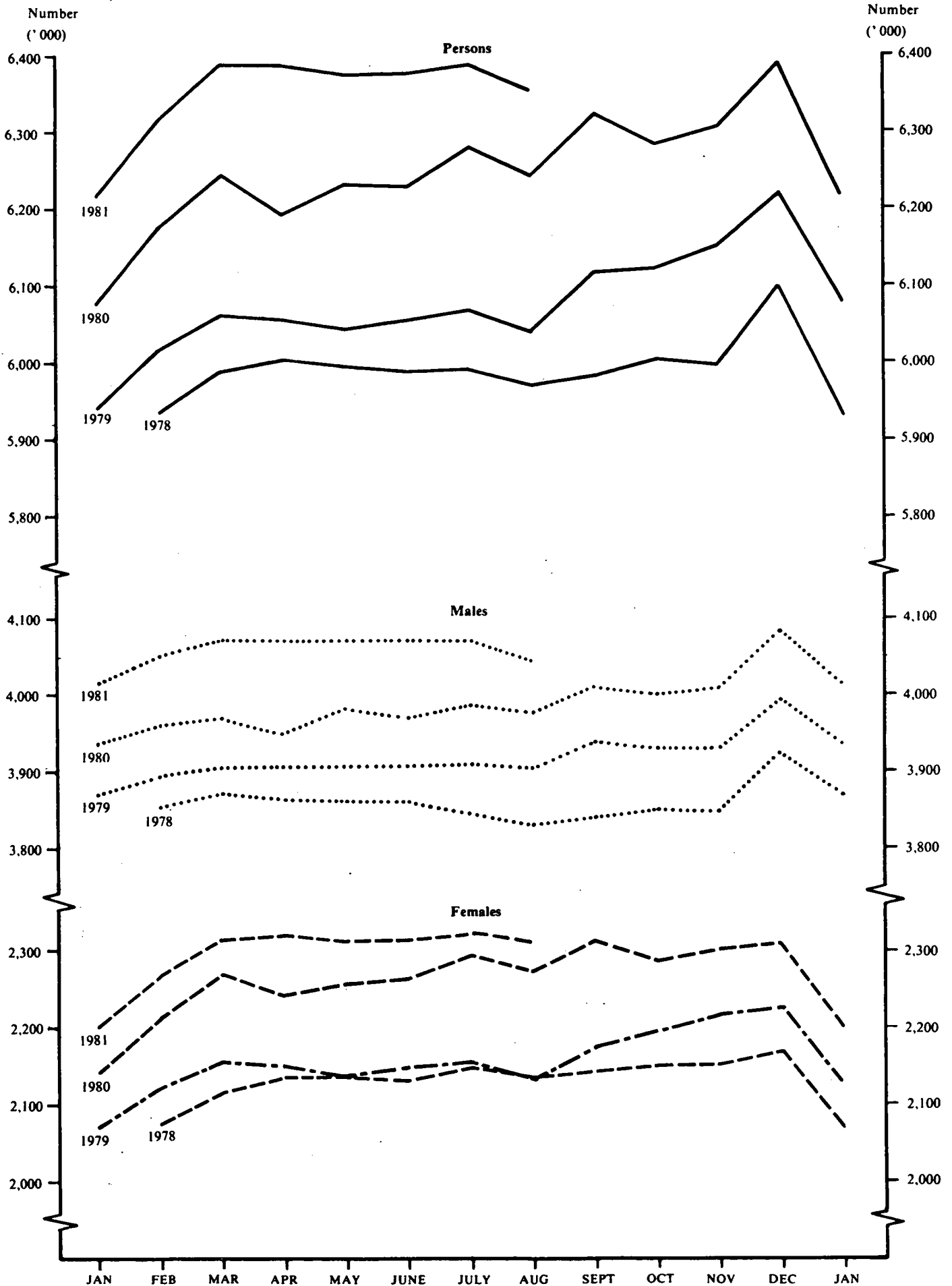
Symbols and other usages

- * subject to sampling variability too high for most practical uses. See paragraph 6 of the Technical note
- n.a. not available
- .. not applicable
- n.e.c. not elsewhere classified
- nil or rounded to zero

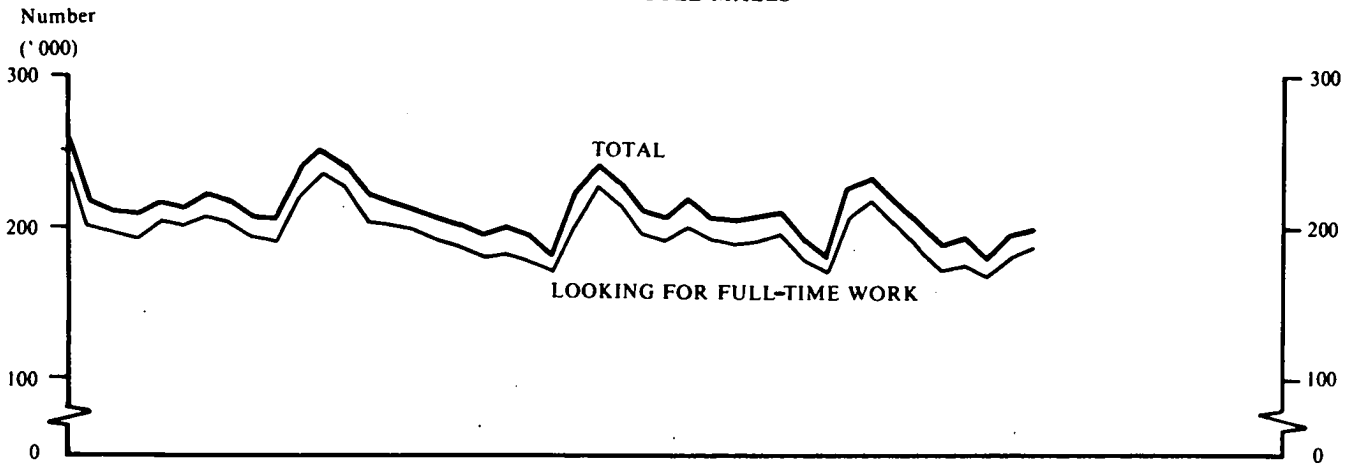
42. Figures have been rounded and discrepancies may occur between sums of the component items and totals.

R. J. CAMERON
Australian Statistician

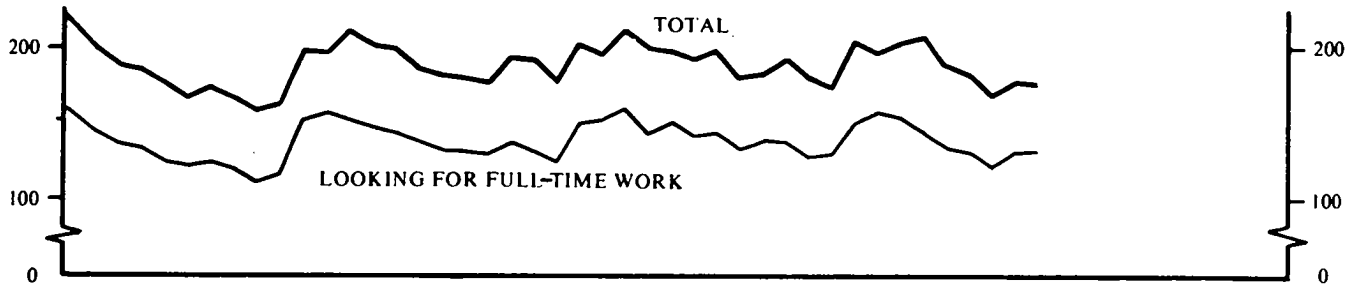
EMPLOYED PERSONS



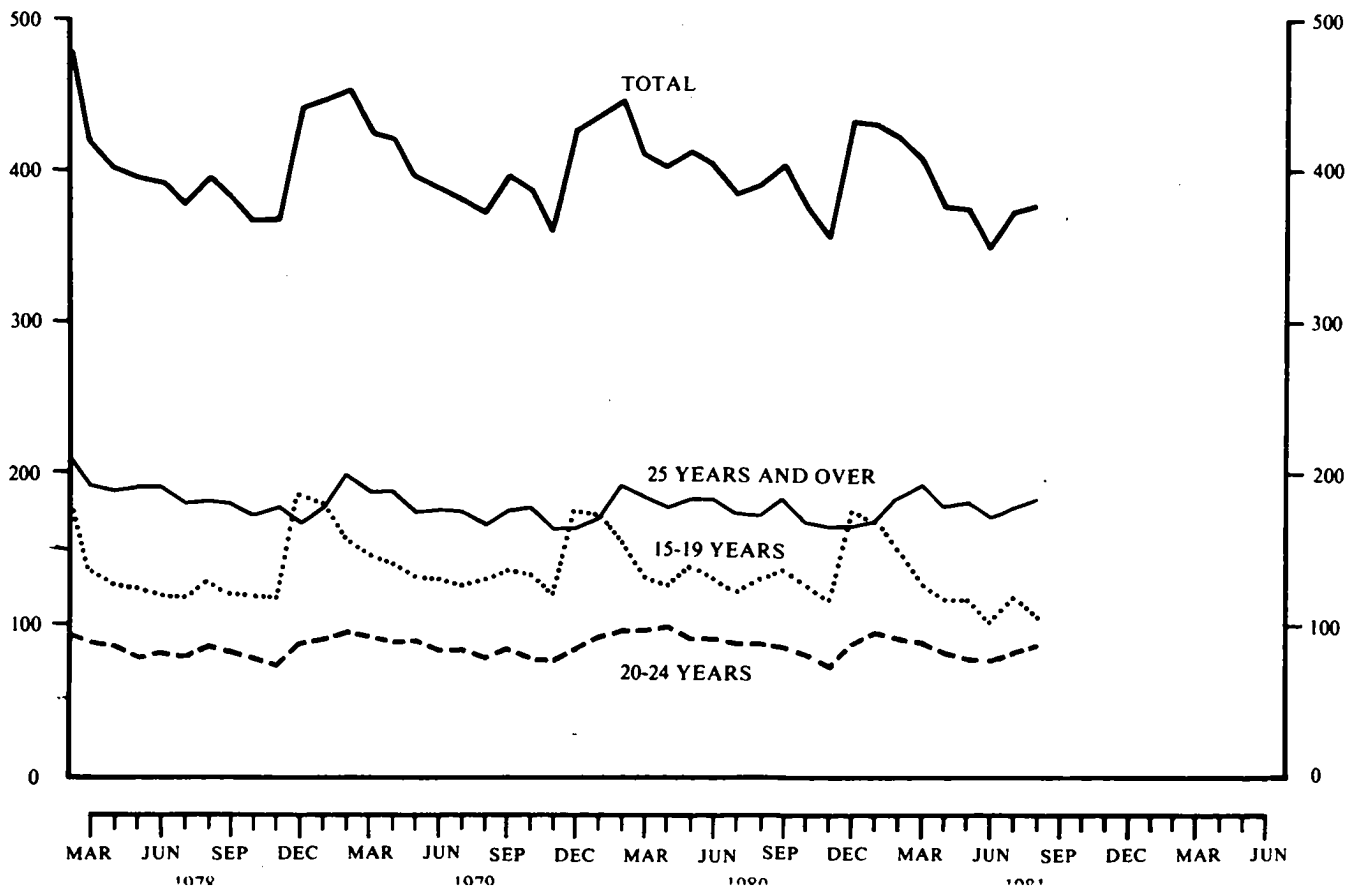
UNEMPLOYED MALES



UNEMPLOYED FEMALES

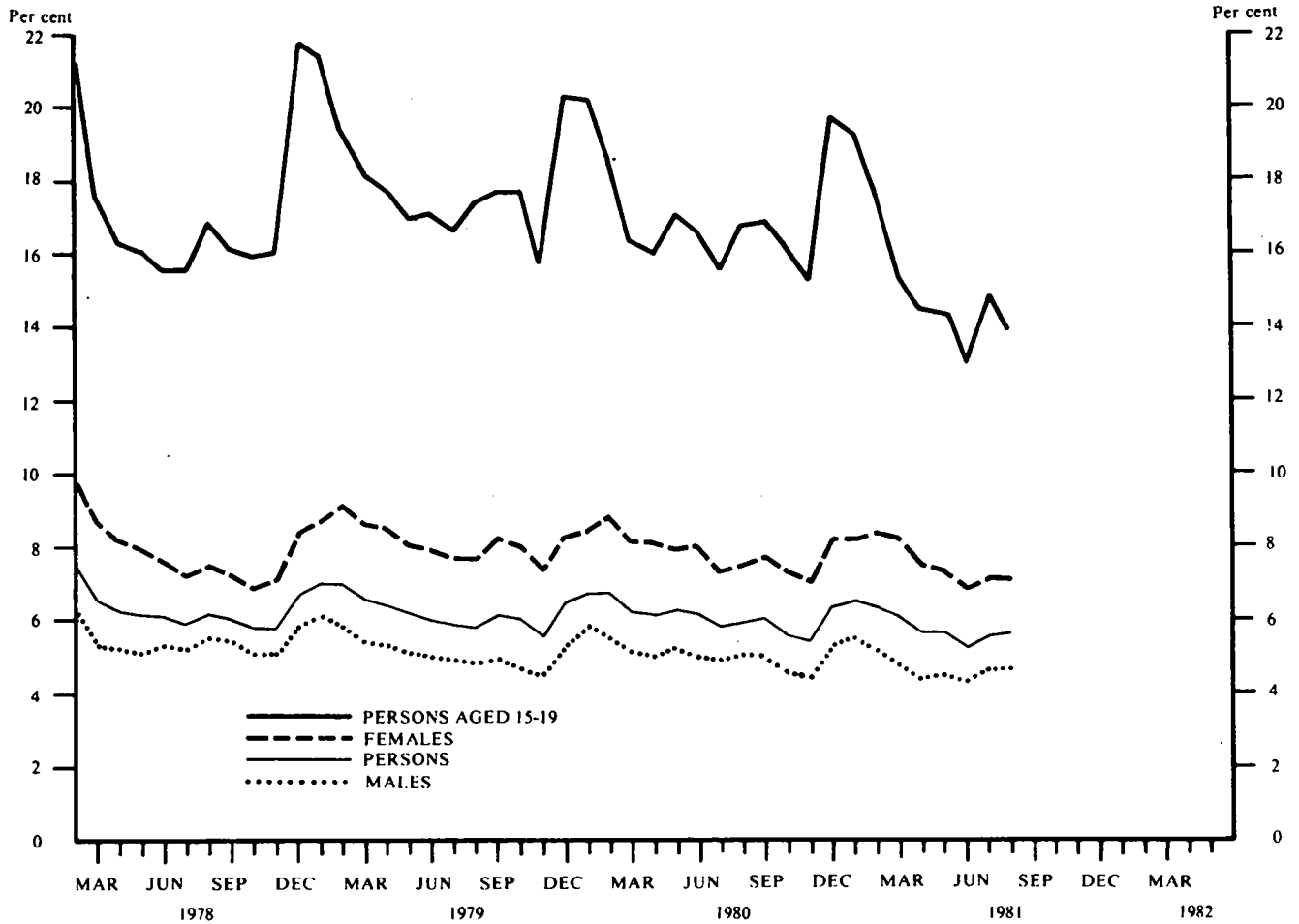


UNEMPLOYED PERSONS



UNEMPLOYMENT RATES

(THE UNEMPLOYMENT IN EACH GROUP AS A PERCENTAGE OF THE CIVILIAN LABOUR FORCE IN THE SAME GROUP)



NOTE. From February 1978 the population survey has been conducted monthly. Previously, surveys were conducted in February, May, August and November each year.

LABOUR FORCE PARTICIPATION RATES

(THE LABOUR FORCE IN EACH GROUP AS A PERCENTAGE OF THE CIVILIAN POPULATION AGED 15 YEARS AND OVER IN THE SAME GROUP)

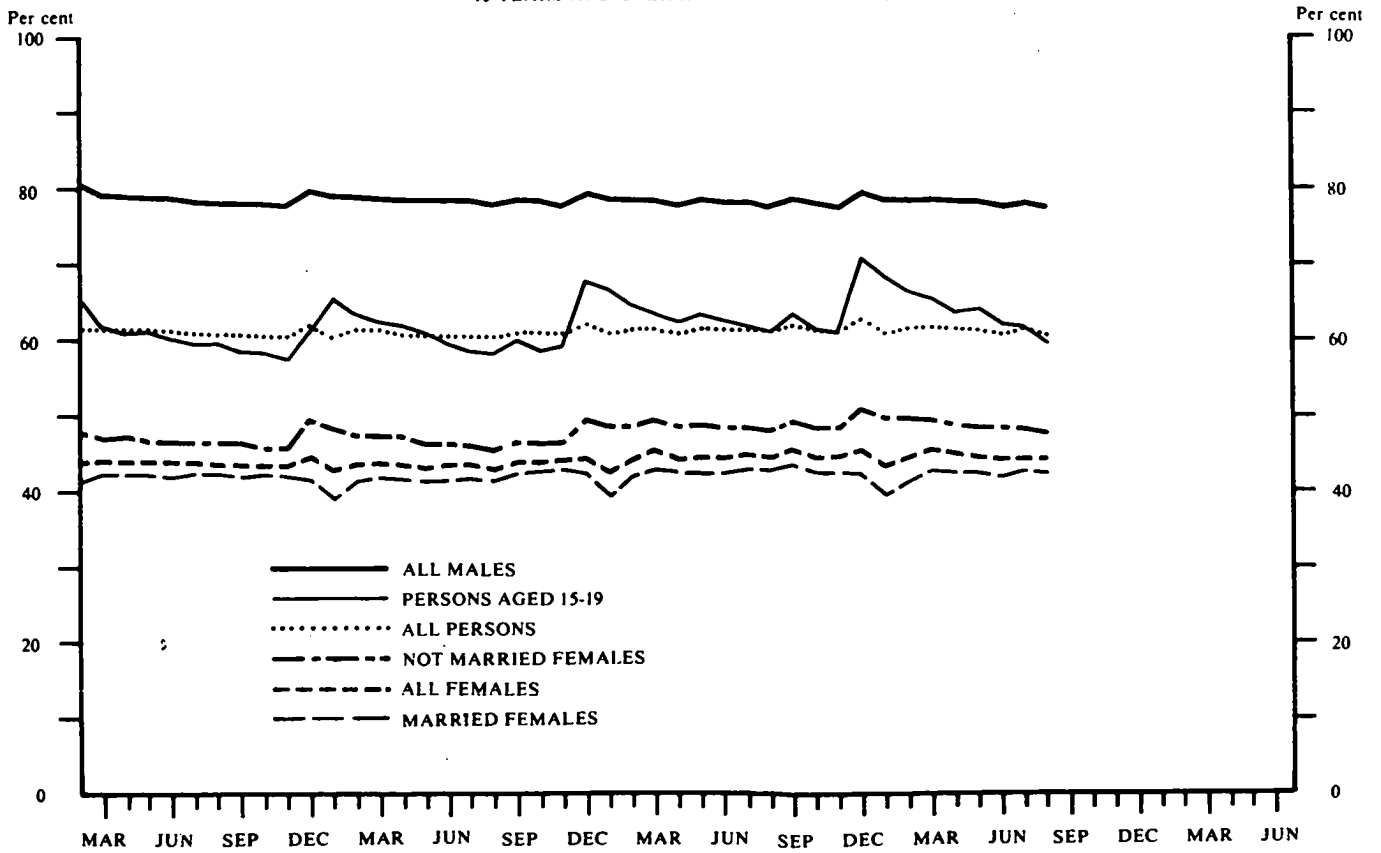


TABLE 1. CIVILIAN POPULATION AGED 15 YEARS AND OVER, BY EMPLOYMENT STATUS(a)

Month	Unemployed										
	Employed		Looking for full-time work		Looking for part-time work		Labour force	Not in labour force	Civilian population aged 15 years and over	Un-employment rate	Participation rate
	Full-time workers	Total	Aged 15-19 years looking for first job	Total	Total	Total					
	— '000 —										
— per cent —											
MALES											
1980—											
July	3,784.0	3,984.2	17.1	190.0	15.4	205.3	4,189.5	1,168.5	5,358.0	4.9	78.2
August	3,762.9	3,970.9	20.0	193.3	15.8	209.1	4,180.0	1,184.3	5,364.2	5.0	77.9
September	3,795.9	4,010.0	24.9	197.9	13.2	211.1	4,221.1	1,151.0	5,372.1	5.0	78.6
October	3,787.7	4,000.8	21.7	180.1	14.7	194.8	4,195.6	1,184.8	5,380.4	4.6	78.0
November	3,780.3	4,006.7	22.4	171.4	11.5	182.8	4,189.6	1,202.5	5,392.1	4.4	77.7
December	3,860.6	4,080.4	43.2	206.1	20.1	226.2	4,306.7	1,096.7	5,403.3	5.3	79.7
1981—											
January	3,823.7	4,017.7	34.4	218.2	15.7	233.9	4,251.6	1,161.4	5,413.0	5.5	78.5
February	3,855.8	4,051.4	29.8	203.6	16.4	220.0	4,271.4	1,149.2	5,420.6	5.2	78.8
March	3,860.4	4,075.7	19.7	185.8	17.5	203.2	4,278.9	1,152.3	5,431.2	4.8	78.8
April	3,854.2	4,068.3	15.6	171.7	16.2	187.9	4,256.2	1,183.1	5,439.3	4.4	78.2
May	3,842.8	4,064.2	15.0	175.5	17.3	192.9	4,257.1	1,190.7	5,447.8	4.5	78.1
June	3,841.3	4,062.8	12.4	169.2	12.3	181.5	4,244.3	1,212.0	5,456.3	4.3	77.8
July	3,853.9	4,065.7	12.5	182.1	14.7	196.8	4,262.5	1,203.3	5,465.7	4.6	78.0
August	3,823.8	4,045.3	12.5	187.0	12.7	199.7	4,245.0	1,230.3	5,475.3	4.7	77.5
Standard error of—											
August 1981 estimates	13.7	14.0	1.6	5.0	1.6	5.1	14.1	9.7	..	0.1	0.3
July 1981 to August 1981 movement	9.6	9.8	1.7	4.2	1.8	4.3	9.9	7.2	..	0.1	0.2
MARRIED FEMALES											
1980—											
July	779.5	1,412.7	*	40.9	29.4	70.3	1,483.0	1,968.1	3,451.2	4.7	43.0
August	775.3	1,412.4	*	42.2	27.6	69.7	1,482.1	1,982.7	3,464.8	4.7	42.8
September	788.6	1,419.8	*	45.0	33.9	78.9	1,498.7	1,962.1	3,460.8	5.3	43.3
October	779.9	1,407.5	*	39.5	34.7	74.2	1,481.7	2,000.1	3,481.8	5.0	42.6
November	780.2	1,419.5	*	42.1	28.4	70.5	1,490.0	1,992.9	3,483.0	4.7	42.8
December	788.9	1,402.9	*	37.6	30.8	68.4	1,471.3	2,017.1	3,488.4	4.7	42.2
1981—											
January	779.3	1,320.9	*	39.5	23.0	62.5	1,383.4	2,121.7	3,505.1	4.5	39.5
February	777.0	1,374.5	*	46.8	32.9	79.8	1,454.2	2,056.7	3,510.9	5.5	41.4
March	776.4	1,417.7	*	45.6	44.5	90.0	1,507.7	2,005.1	3,512.8	6.0	42.9
April	789.8	1,423.8	*	43.9	34.9	78.8	1,502.6	2,015.7	3,518.3	5.2	42.7
May	787.4	1,423.3	*	44.0	34.5	78.4	1,501.7	2,030.2	3,531.9	5.2	42.5
June	779.8	1,411.9	*	39.1	32.8	71.9	1,483.8	2,040.9	3,524.7	4.8	42.1
July	794.8	1,437.4	*	43.3	26.3	69.7	1,507.1	2,029.7	3,536.7	4.6	42.6
August	777.4	1,417.8	*	42.6	30.1	72.7	1,490.5	2,034.1	3,524.6	4.9	42.3
Standard error of—											
August 1981 estimates	8.3	10.2	..	2.7	2.4	3.4	10.3	11.4	..	0.2	0.3
July 1981 to August 1981 movement	6.4	7.5	..	2.6	2.3	3.1	7.6	8.2	..	0.2	0.2

For footnote see end of table.

TABLE 1. CIVILIAN POPULATION AGED 15 YEARS AND OVER, BY EMPLOYMENT STATUS(a)—continued

Month	Unemployed										
	Employed		Looking for full-time work			Labour force		Civilian population aged 15 years and over		Un-employment rate	Participation rate
			Aged 15-19 years looking for first job	Looking for part-time work	Total						
	Full-time workers	Total	Total	Total	Total	Not in labour force	— '000 —	— per cent —			
ALL FEMALES											
1980—											
July	1,483.6	2,295.8	25.6	134.8	45.2	180.0	2,475.9	3,017.8	5,493.7	7.3	45.1
August	1,461.8	2,275.8	26.5	139.4	43.8	183.2	2,459.0	3,041.4	5,500.4	7.5	44.7
September	1,497.1	2,315.3	23.6	137.6	56.8	194.4	2,509.7	2,999.2	5,508.9	7.7	45.6
October	1,473.3	2,285.2	24.1	127.0	53.9	180.9	2,466.1	3,050.6	5,516.7	7.3	44.7
November	1,472.1	2,301.8	21.1	131.3	42.8	174.1	2,476.0	3,052.4	5,528.4	7.0	44.8
December	1,507.8	2,309.1	39.2	151.2	54.5	205.8	2,514.9	3,023.0	5,537.9	8.2	45.4
1981—											
January	1,489.8	2,201.3	43.0	158.7	37.7	196.5	2,397.8	3,151.8	5,549.5	8.2	43.2
February	1,485.2	2,269.3	33.4	154.7	49.4	204.1	2,473.4	3,084.7	5,558.2	8.3	44.5
March	1,479.0	2,314.4	28.4	144.9	61.7	206.6	2,521.0	3,047.6	5,568.6	8.2	45.3
April	1,500.7	2,321.1	25.6	134.8	53.3	188.1	2,509.2	3,067.7	5,576.9	7.5	45.0
May	1,492.2	2,313.0	23.9	132.1	50.5	182.6	2,495.6	3,089.8	5,585.4	7.3	44.7
June	1,497.2	2,316.2	20.6	120.5	48.3	168.7	2,484.9	3,109.1	5,594.0	6.8	44.4
July	1,502.0	2,323.3	23.3	132.8	45.2	178.0	2,501.3	3,102.1	5,603.4	7.1	44.6
August	1,484.7	2,311.0	17.9	133.8	43.5	177.4	2,488.4	3,124.3	5,612.7	7.1	44.3
Standard error of—											
August 1981 estimates	10.3	11.8	1.9	4.4	2.8	4.9	12.1	12.9	..	0.2	0.2
July 1981 to August 1981 movement	7.6	8.5	2.1	3.8	2.6	4.1	8.7	9.2	..	0.2	0.2
PERSONS											
1980—											
July	5,267.7	6,280.0	42.7	324.8	60.6	385.4	6,665.4	4,186.3	10,851.7	5.8	61.4
August	5,224.7	6,246.7	46.5	332.6	59.7	392.3	6,639.0	4,225.7	10,864.7	5.9	61.1
September	5,293.0	6,325.3	48.6	335.5	70.0	405.5	6,730.8	4,150.2	10,881.0	6.0	61.9
October	5,260.9	6,286.0	45.9	307.1	68.6	375.7	6,661.7	4,235.4	10,897.1	5.6	61.1
November	5,252.4	6,308.5	43.5	302.7	54.3	357.0	6,665.5	4,254.9	10,920.5	5.4	61.0
December	5,368.4	6,389.5	82.3	357.4	74.6	432.0	6,821.5	4,119.7	10,941.2	6.3	62.3
1981—											
January	5,313.5	6,219.1	77.4	377.0	53.4	430.4	6,649.4	4,313.2	10,962.6	6.5	60.7
February	5,341.0	6,320.7	63.2	358.4	65.8	424.1	6,744.8	4,233.9	10,978.8	6.3	61.4
March	5,339.4	6,390.1	48.1	330.7	79.2	409.9	6,799.9	4,200.0	10,999.9	6.0	61.8
April	5,354.9	6,389.4	41.2	306.5	69.5	376.0	6,765.4	4,250.8	11,016.2	5.6	61.4
May	5,335.0	6,377.2	38.8	307.7	67.8	375.5	6,752.7	4,280.5	11,033.2	5.6	61.2
June	5,338.5	6,379.0	33.0	289.7	60.6	350.2	6,729.2	4,321.1	11,050.3	5.2	60.9
July	5,355.9	6,388.9	35.8	314.9	59.9	374.8	6,763.8	4,305.4	11,069.2	5.5	61.1
August	5,308.5	6,356.3	30.4	320.9	56.2	377.1	6,733.4	4,354.7	11,088.0	5.6	60.7
Standard error of—											
August 1981 estimates	15.1	15.8	2.4	6.1	3.1	6.5	16.1	14.2	..	0.1	0.1
July 1981 to August 1981 movement	10.4	10.8	2.4	5.0	2.9	5.2	11.0	9.9	..	0.1	0.1

(a) For information on standard errors see Technical note.

TABLE 2. CIVILIAN POPULATION AGED 15 YEARS AND OVER, BY EMPLOYMENT STATUS AND MARITAL STATUS, AUGUST 1981

	Employed		Unemployed			Labour force	Not in labour force	Civilian population aged 15 years and over	Unemployment rate	Participation rate
	Full-time workers	Total	Looking for full-time work	Looking for part-time work	Total					
	— '000 —									
Males—										
Married	2,675.8	2,774.0	72.3	*	75.0	2,848.9	686.0	3,535.0	2.6	80.6
Not married(a)	1,148.0	1,271.3	114.8	9.9	124.7	1,396.0	544.3	1,940.4	8.9	71.9
Total	3,823.8	4,045.3	187.0	12.7	199.7	4,245.0	1,230.3	5,475.3	4.7	77.5
Females—										
Married	777.4	1,417.8	42.6	30.1	72.7	1,490.5	2,034.1	3,524.6	4.9	42.3
Not married(a)	707.3	893.2	91.3	13.4	104.7	997.9	1,090.2	2,088.1	10.5	47.8
Total	1,484.7	2,311.0	133.8	43.5	177.4	2,488.4	3,124.3	5,612.7	7.1	44.3
Persons	5,308.5	6,356.3	320.9	56.2	377.1	6,733.4	4,354.7	11,088.0	5.6	60.7

(a) Comprises never married, widowed and divorced.

TABLE 3. CIVILIAN POPULATION AGED 15 YEARS AND OVER, BY EMPLOYMENT STATUS, STATES AND TERRITORIES, AUGUST 1981

State or Territory	Employed		Unemployed			Labour force	Not in labour force	Civilian population aged 15 years and over	Unemployment rate	Participation rate
	Full-time workers	Total	Looking for full-time work	Looking for part-time work	Total					
	— '000 —									
MALES										
N.S.W.	1,347.1	1,427.2	56.5	*	60.8	1,488.0	441.5	1,929.5	4.1	77.1
Vic.	1,015.5	1,076.3	46.1	*	50.4	1,126.6	315.2	1,441.8	4.5	78.1
Qld	595.1	624.7	26.4	*	28.3	653.0	204.6	857.6	4.3	76.1
S.A.	333.9	351.8	27.2	*	27.9	379.7	112.0	491.7	7.3	77.2
W.A.	334.6	354.1	19.3	*	20.2	374.2	104.1	478.3	5.4	78.2
Tas.	106.7	111.8	7.6	*	7.8	119.6	36.1	155.7	6.5	76.8
N.T.	33.5	38.1	*	*	*	38.9	5.2	44.1	*	88.3
A.C.T.	57.4	61.4	3.1	*	3.6	65.0	11.7	76.7	5.6	84.8
Australia	3,823.8	4,045.3	187.0	12.7	199.7	4,245.0	1,230.3	5,475.3	4.7	77.5
FEMALES										
N.S.W.	520.2	797.8	37.7	13.4	51.1	848.9	1,140.8	1,989.7	6.0	42.7
Vic.	435.6	639.9	36.4	13.4	49.8	689.7	802.6	1,492.3	7.2	46.2
Qld	210.6	342.9	23.2	7.1	30.3	373.3	498.7	871.9	8.1	42.8
S.A.	123.7	204.4	16.7	3.7	20.4	224.8	279.5	504.3	9.1	44.6
W.A.	116.8	202.2	12.7	3.6	16.3	218.5	254.5	473.0	7.5	46.2
Tas.	37.3	61.2	4.8	*	5.9	67.1	94.4	161.5	8.8	41.6
N.T.	12.4	19.4	*	*	*	20.5	18.3	38.8	*	52.7
A.C.T.	28.2	43.2	*	*	2.5	45.7	35.5	81.2	5.5	56.3
Australia	1,484.7	2,311.0	133.8	43.5	177.4	2,488.4	3,124.3	5,612.7	7.1	44.3
PERSONS										
N.S.W.	1,867.3	2,225.1	94.2	17.6	111.8	2,336.9	1,582.3	3,919.2	4.8	59.6
Vic.	1,451.1	1,716.1	82.5	17.7	100.2	1,816.3	1,117.8	2,934.1	5.5	61.9
Qld	805.7	967.6	49.6	9.0	58.6	1,026.2	703.3	1,729.5	5.7	59.3
S.A.	457.6	556.3	43.9	4.3	48.3	604.5	391.4	996.0	8.0	60.7
W.A.	451.4	556.3	32.0	4.5	36.5	592.7	358.6	951.3	6.2	62.3
Tas.	144.0	173.0	12.4	*	13.7	186.7	130.5	317.2	7.3	58.9
N.T.	45.9	57.5	*	*	*	59.4	23.5	82.9	*	71.6
A.C.T.	85.5	104.5	4.8	*	6.2	110.7	47.2	157.9	5.6	70.1
Australia	5,308.5	6,356.3	320.9	56.2	377.1	6,733.4	4,354.7	11,088.0	5.6	60.7

TABLE 4. CIVILIAN POPULATION AGED 15 YEARS AND OVER, BY EMPLOYMENT STATUS, STATE CAPITAL CITIES, AUGUST 1981

Capital city	Employed		Unemployed			Labour force	Not in labour force	Civilian population aged 15 years and over	Unemployment rate	Participation rate
	Full-time workers	Total	Looking for full-time work	Looking for part-time work	Total					
	— '000 —									
MALES										
Sydney	853.9	908.1	29.2	*	31.7	939.8	273.2	1,212.9	3.4	77.5
Melbourne	722.4	765.5	32.4	*	35.3	800.8	227.6	1,028.4	4.4	77.9
Brisbane	268.5	281.2	12.8	*	13.8	295.0	92.5	387.5	4.7	76.1
Adelaide	233.2	245.7	21.3	*	21.9	267.6	85.7	353.3	8.2	75.2
Perth	226.1	241.6	14.1	*	14.9	256.5	76.5	333.0	5.8	77.0
Hobart	40.0	42.5	3.5	*	3.6	46.1	17.1	63.2	7.8	73.0
Total	2,344.0	2,484.6	113.3	8.0	121.2	2,605.8	772.5	3,378.2	4.7	77.1
FEMALES										
Sydney	377.4	553.8	19.1	9.8	28.9	582.6	701.8	1,284.5	5.0	45.4
Melbourne	339.5	483.8	27.8	10.3	38.1	521.9	556.5	1,078.5	7.3	48.4
Brisbane	106.5	169.7	10.0	*	13.1	182.8	233.1	415.9	7.2	44.0
Adelaide	96.1	152.6	13.4	2.9	16.3	168.8	205.6	374.4	9.6	45.1
Perth	91.3	154.0	9.8	2.9	12.7	166.7	185.8	352.5	7.6	47.3
Hobart	19.1	27.8	1.8	*	2.4	30.2	37.1	67.4	7.9	44.8
Total	1,029.9	1,541.6	81.9	29.5	111.4	1,653.0	1,920.1	3,573.1	6.7	46.3
PERSONS										
Sydney	1,231.3	1,461.8	48.3	12.3	60.6	1,522.4	975.0	2,497.4	4.0	61.0
Melbourne	1,061.9	1,249.3	60.2	13.3	73.5	1,322.7	784.1	2,106.8	5.6	62.8
Brisbane	375.1	451.0	22.8	4.1	26.8	477.8	325.6	803.4	5.6	59.5
Adelaide	329.3	398.2	34.7	3.4	38.2	436.4	291.3	727.7	8.7	60.0
Perth	317.4	395.6	23.9	3.7	27.6	423.2	262.3	685.5	6.5	61.7
Hobart	59.0	70.3	5.2	*	6.0	76.3	54.2	130.5	7.9	58.5
Total	3,373.9	4,026.2	195.1	37.5	232.6	4,258.8	2,692.5	6,951.3	5.5	61.3

TABLE 5. CIVILIAN POPULATION AGED 15 YEARS AND OVER BY EMPLOYMENT STATUS: AUSTRALIAN CAPITAL TERRITORY, AUGUST 1981

	Persons							
	Males	Females		Total	Total	Aged 15-19 years	Aged 20-24 years	Aged 25 years and over
		Married	Total					
— '000 —								
Employed	61.4	28.2	43.2	104.5	9.3	12.9	82.4	
Full-time workers	57.4	16.7	28.2	85.5	5.2	11.1	69.2	
Part-time workers	4.0	11.5	15.0	19.0	4.1	*	13.1	
Unemployed	3.6	*	2.5	6.2	*	2.3	2.4	
Looking for full-time work	3.1	*	*	4.8	*	*	2.1	
Looking for part-time work	*	*	*	*	*	*	*	
Labour force	65.0	29.3	45.7	110.7	10.7	15.2	84.8	
Not in the labour force	11.7	24.5	35.5	47.2	9.4	3.6	34.2	
Aged 15-19 years attending school(a)	4.0	*	3.7	7.7	
Civilian population	76.7	53.8	81.2	157.9	20.1	18.8	119.0	
— per cent —								
Unemployment rate	5.6	*	5.5	5.6	*	15.1	2.9	
Persons looking for full-time work	5.1	*	*	5.4	*	*	3.0	
Participation rate	84.8	54.5	56.3	70.1	53.3	80.7	71.3	
Employment/population ratio	80.0	52.4	53.1	66.2	46.0	68.5	69.2	
— number—								
Average weekly hours worked by employed persons(b)	38.5	28.4	28.8	34.5	n.a.	n.a.	n.a.	
Average duration of unemployment (weeks)	43.5	*	17.1	32.7	*	24.5	42.1	

(a) Excludes persons in institutions. See Explanatory notes, paragraph 18. (b) Figures of hours relate to average weekly hours worked, not hours paid for. See Explanatory notes, paragraph 17.

TABLE 6. CIVILIAN POPULATION AGED 15 TO 19 YEARS, BY EMPLOYMENT STATUS AND WHETHER OR NOT ATTENDING SCHOOL, AUGUST 1981(a)

	Employed		Unemployed			Labour force	Not in labour force	Civilian population	Unemployment rate	Participation rate
	Full-time workers	Total	Looking for full-time work	Looking for part-time work	Total					
— '000 —										
NOT ATTENDING SCHOOL										
Males	292.6	317.7	37.5	*	39.2	356.9	40.7	397.6	11.0	89.8
Females	213.2	249.2	46.4	*	49.8	299.0	75.9	374.9	16.7	79.8
Persons	505.8	566.9	83.9	5.1	89.0	655.9	116.6	772.5	13.6	84.9
Left school—										
Before 1979	183.7	196.5	26.7	*	27.3	223.8	32.1	255.9	12.2	87.4
1979	160.5	179.4	23.1	*	25.4	204.8	30.1	234.9	12.4	87.2
1980 to survey date	161.6	191.0	34.1	*	36.4	227.3	54.3	281.7	16.0	80.7
Age (years)—										
15	13.1	14.9	*	*	*	19.0	6.3	25.3	*	75.1
16	56.3	64.0	16.3	*	16.4	80.4	11.3	91.7	20.4	87.6
17	111.1	123.0	19.5	*	20.4	143.3	19.0	162.3	14.2	88.3
18	152.7	172.8	23.8	*	26.0	198.8	36.7	235.5	13.1	84.4
19	172.6	192.3	20.2	*	22.2	214.4	43.3	257.7	10.3	83.2
ATTENDING SCHOOL										
Males	*	40.0	*	*	5.9	46.0	203.3	249.3	12.9	18.4
Females	*	45.1	*	6.7	10.7	55.8	189.0	244.8	19.2	22.8
Persons	*	85.2	7.1	9.5	16.6	101.8	392.3	494.1	16.3	20.6
Age (years)—										
15	*	33.6	*	6.0	8.6	42.2	178.9	221.1	20.3	19.1
16	*	29.8	*	*	6.1	35.8	120.4	156.3	17.0	22.9
17	*	17.9	*	*	*	19.4	71.2	90.6	*	21.4
18 and 19	*	*	*	*	*	*	21.8	26.1	*	*
TOTAL										
Males	293.1	357.7	40.7	4.5	45.1	402.8	244.1	646.9	11.2	62.3
Females	213.8	294.3	50.3	10.2	60.5	354.8	264.9	619.7	17.1	57.3
Persons	506.9	652.0	91.0	14.6	105.6	757.7	508.9	1,266.6	13.9	59.8
Age (years)—										
15	13.8	48.5	6.7	6.0	12.7	61.2	185.2	246.4	20.8	24.8
16	56.5	93.7	19.2	4.5 {	22.5	116.2	131.8	248.0	19.4	46.9
17	111.3	140.9	20.6		21.8	162.7	90.2	252.9	13.4	64.3
18	152.8	176.6	24.1		*	26.3	202.9	55.5	258.4	12.9
19	172.6	192.3	20.4	*	22.4	214.6	46.2	260.9	10.4	82.3

(a) For information on duration of unemployment, see Table 28. Excludes persons in institutions. See Explanatory notes, paragraph 18.

TABLE 7. CIVILIAN POPULATION AGED 20 TO 24 YEARS, BY EMPLOYMENT STATUS, AUGUST 1981

	Employed		Unemployed			Labour force	Not in labour force	Civilian population	Unemployment rate	Participation rate
	Full-time workers	Total	Looking for full-time work	Looking for part-time work	Total					
— '000 —										
— per cent —										
Males	507.5	536.4	46.4	*	49.0	585.4	55.9	641.2	8.4	91.3
Females	333.1	406.9	33.1	5.7	38.7	445.6	184.5	630.2	8.7	70.7
Persons	840.6	943.3	79.5	8.3	87.7	1,031.0	240.4	1,271.4	8.5	81.1
Age (years)—										
20	169.1	193.6	19.3	6.1 {	20.9	214.5	48.4	262.9	9.8	81.6
21	165.2	188.9	19.8		21.3	210.3	48.1	258.4	10.1	81.4
22	173.3	190.9	15.9		16.9	207.7	47.7	255.4	8.1	81.3
23	171.3	189.5	12.5		14.4	203.9	46.7	250.6	7.1	81.4
24	161.8	180.3	12.1		*	14.2	194.6	49.5	244.1	7.3

TABLE 8. SEASONALLY ADJUSTED SERIES(a)

Month	Males		Married females		All females		Persons	
	Original	Seasonally adjusted	Original	Seasonally adjusted	Original	Seasonally adjusted	Original	Seasonally adjusted
EMPLOYED (' 000)								
1976—August(b)	3,836.3	3,850.3	1,337.8	1,341.1	2,061.5	2,071.5	5,897.8	5,926.7
November	3,866.0	3,871.8	1,361.6	1,344.4	2,089.0	2,070.8	5,955.0	5,942.7
1977—February	3,890.2	3,883.1	1,355.5	1,370.5	2,095.1	2,107.0	5,985.2	5,987.5
May	3,891.5	3,878.7	1,382.0	1,381.2	2,132.7	2,129.1	6,024.2	6,005.7
August	3,866.8	3,880.7	1,374.5	1,376.3	2,128.6	2,137.3	5,995.4	6,022.4
November	3,867.3	3,873.5	1,368.9	1,353.3	2,128.2	2,111.2	5,995.4	5,984.9
1978—February(c)	3,857.4	3,849.9	1,320.9	1,336.0	2,074.8	2,087.7	5,932.3	5,934.7
May	3,863.5	3,851.3	1,356.5	1,355.5	2,135.3	2,131.3	5,998.7	5,981.8
August	3,832.3	3,845.5	1,357.7	1,357.8	2,137.2	2,144.0	5,969.6	5,993.0
November	3,846.1	3,852.6	1,373.4	1,359.1	2,151.2	2,135.1	5,997.3	5,988.2
1979—February	3,893.6	3,886.0	1,346.1	1,362.1	2,125.4	2,139.3	6,018.9	6,021.6
May	3,908.3	3,896.2	1,356.3	1,355.1	2,135.0	2,131.1	6,043.3	6,027.8
August	3,904.5	3,917.5	1,347.2	1,346.0	2,136.9	2,142.2	6,041.5	6,062.2
November	3,931.2	3,937.8	1,408.5	1,394.4	2,219.4	2,203.4	6,150.6	6,142.3
1980—February	3,960.1	3,952.7	1,370.7	1,387.6	2,213.9	2,228.7	6,174.1	6,177.1
May	3,981.2	3,968.9	1,394.7	1,393.2	2,256.6	2,252.6	6,237.8	6,222.7
August	3,970.9	3,984.0	1,412.4	1,410.7	2,275.8	2,281.0	6,246.7	6,266.6
November	4,006.7	4,013.4	1,419.5	1,405.6	2,301.8	2,285.6	6,308.5	6,300.6
1981—February	4,051.4	4,044.0	1,374.5	1,391.8	2,269.3	2,284.7	6,320.7	6,323.9
May	4,064.2	4,051.6	1,423.3	1,421.6	2,313.0	2,308.9	6,377.2	6,362.2
August	4,045.3	4,058.5	1,417.8	1,415.9	2,311.0	2,316.0	6,356.3	6,375.8
LABOUR FORCE (' 000)								
1976—August(b)	3,992.9	4,015.7	1,400.9	1,406.5	2,197.6	2,217.3	6,190.5	6,231.8
November	4,021.2	4,035.9	1,412.9	1,404.1	2,215.3	2,210.5	6,236.5	6,246.8
1977—February	4,076.2	4,046.6	1,438.3	1,440.9	2,281.3	2,267.1	6,357.5	6,313.7
May	4,076.2	4,067.4	1,456.6	1,457.3	2,301.8	2,300.4	6,378.0	6,367.9
August	4,056.9	4,079.7	1,451.2	1,454.9	2,297.8	2,315.5	6,354.7	6,394.3
November	4,050.4	4,067.6	1,436.6	1,430.2	2,291.9	2,290.8	6,342.2	6,359.8
1978—February(c)	4,112.4	4,081.1	1,413.6	1,417.0	2,296.9	2,283.8	6,409.3	6,364.3
May	4,072.6	4,063.9	1,440.4	1,439.9	2,321.4	2,318.3	6,394.0	6,381.8
August	4,053.8	4,075.4	1,434.9	1,436.9	2,311.5	2,327.0	6,365.3	6,401.7
November	4,052.4	4,071.7	1,436.8	1,431.9	2,314.6	2,315.5	6,367.0	6,389.4
1979—February	4,135.4	4,103.0	1,431.8	1,436.2	2,337.5	2,325.6	6,472.9	6,427.5
May	4,118.9	4,110.3	1,428.5	1,427.1	2,321.0	2,316.7	6,439.9	6,426.5
August	4,100.7	4,121.7	1,420.8	1,421.8	2,314.6	2,328.9	6,415.3	6,449.6
November	4,115.0	4,135.8	1,485.0	1,480.7	2,396.2	2,398.0	6,511.2	6,537.1
1980—February	4,190.6	4,157.1	1,455.3	1,460.6	2,428.0	2,416.4	6,618.6	6,571.5
May	4,201.1	4,192.8	1,468.2	1,466.0	2,450.3	2,445.1	6,651.4	6,637.5
August	4,180.0	4,200.8	1,482.1	1,483.0	2,459.0	2,474.1	6,639.0	6,673.9
November	4,189.6	4,211.4	1,490.0	1,486.1	2,476.0	2,478.4	6,665.5	6,693.5
1981—February	4,271.4	4,236.8	1,454.2	1,459.9	2,473.4	2,461.9	6,744.8	6,696.6
May	4,257.1	4,248.9	1,501.7	1,499.1	2,495.6	2,490.0	6,752.7	6,738.4
August	4,245.0	4,265.8	1,490.5	1,491.4	2,488.4	2,503.7	6,733.4	6,768.5
PARTICIPATION RATE (per cent)								
1976—August(b)	80.0	80.4	41.5	41.6	43.0	43.4	61.3	61.7
November	80.2	80.5	41.8	41.5	43.2	43.1	61.5	61.6
1977—February	80.9	80.3	42.3	42.4	44.3	44.0	62.4	61.9
May	80.5	80.4	42.8	42.8	44.4	44.4	62.3	62.2
August	79.8	80.2	42.6	42.7	44.2	44.5	61.8	62.2
November	79.3	79.7	42.3	42.0	43.8	43.8	61.4	61.5
1978—February(c)	80.1	79.5	41.5	41.6	43.7	43.4	61.7	61.2
May	78.9	78.8	42.4	42.4	43.9	43.9	61.2	61.1
August	78.3	78.6	42.1	42.1	43.5	43.8	60.7	61.0
November	77.9	78.3	42.0	41.8	43.4	43.4	60.5	60.7
1979—February	79.1	78.5	41.4	41.6	43.6	43.4	61.2	60.7
May	78.4	78.3	41.2	41.2	43.1	43.1	60.6	60.5
August	77.8	78.2	41.3	41.3	42.9	43.1	60.1	60.4
November	77.8	78.2	42.8	42.6	44.2	44.2	60.7	61.0
1980—February	78.8	78.1	42.0	42.3	44.5	44.3	61.4	61.0
May	78.6	78.5	42.4	42.4	44.7	44.7	61.5	61.4
August	77.9	78.3	42.8	42.8	44.7	45.0	61.1	61.4
November	77.7	78.1	42.8	42.6	44.8	44.8	61.0	61.3
1981—February	78.8	78.2	41.4	41.7	44.5	44.3	61.4	61.0
May	78.1	78.0	42.5	42.4	44.7	44.6	61.2	61.1
August	77.5	77.9	42.3	42.3	44.3	44.6	60.7	61.0

(a) The methods used to seasonally adjust these figures are explained in *Seasonally Adjusted Indicators, Australia, 1981* (1308.0). See also Explanatory notes, paragraphs 36 and 37. (b) Affected by industrial disputes. (c) First of monthly series. For information on the change in timing of the survey see Explanatory notes, paragraph 28.

TABLE 9. CIVILIAN LABOUR FORCE, BY EMPLOYMENT STATUS AND BIRTHPLACE, AUGUST 1981

	Employed		Unemployed		Labour force	Unemployment rate	Participation rate(a)
	Full-time	Total	Looking for full-time work	Total			
	— '000 —						
MALES							
Born in Australia	2,763.7	2,935.3	129.4	139.4	3,074.7	4.5	78.1
Born outside Australia	1,060.1	1,110.0	57.6	60.3	1,170.3	5.2	78.8
Africa	29.7	31.6	*	*	32.7	*	81.5
America	33.1	35.7	*	*	37.5	*	87.7
Asia	109.8	116.0	8.6	9.2	125.2	7.4	76.1
Lebanon	14.5	14.9	*	*	17.5	*	79.6
Europe	823.9	859.1	43.3	45.2	904.2	5.0	78.2
Germany, Fed. Rep.	41.0	43.7	*	*	46.6	*	88.2
Greece	61.3	63.6	*	*	67.3	*	82.1
Italy	114.2	117.7	5.1	5.5	123.1	4.4	80.6
Malta	21.4	22.7	*	*	24.2	*	81.7
Netherlands	37.8	39.7	*	*	41.0	*	83.0
Poland	18.8	19.8	*	*	20.7	*	65.1
U.K. and Ireland	387.6	404.3	19.2	20.5	424.9	4.8	76.9
Yugoslavia	61.5	64.0	*	*	68.4	*	78.4
Oceania	63.5	67.6	*	*	70.7	*	86.3
New Zealand	57.7	61.5	*	*	64.3	*	87.6
MARRIED FEMALES							
Born in Australia	518.3	1,004.2	23.5	43.0	1,047.2	4.1	41.1
Born outside Australia	259.1	413.6	19.1	29.6	443.3	6.7	45.9
Africa	8.8	13.7	*	*	14.6	*	51.8
America	8.4	12.3	*	*	14.6	*	56.0
Asia	34.6	46.0	*	*	50.2	*	47.8
Lebanon	*	*	*	*	*	*	*
Europe	194.1	320.3	12.4	19.6	339.9	5.8	44.7
Germany, Fed. Rep.	7.7	15.3	*	*	16.4	*	40.8
Greece	19.5	28.5	*	*	31.9	*	50.9
Italy	23.2	38.5	*	*	39.4	*	39.6
Malta	4.8	7.8	*	*	7.8	*	40.8
Netherlands	4.5	10.9	*	*	11.6	*	33.0
Poland	5.6	7.9	*	*	8.0	*	41.2
U.K. and Ireland	87.8	155.6	6.3	9.0	164.6	5.5	45.8
Yugoslavia	24.2	29.3	*	*	31.8	*	55.7
Oceania	13.1	21.4	*	*	24.0	*	51.5
New Zealand	9.7	17.3	*	*	19.8	*	50.3
ALL FEMALES							
Born in Australia	1,097.6	1,739.4	98.5	128.9	1,868.3	6.9	44.8
Born outside Australia	387.2	571.6	35.4	48.5	620.1	7.8	45.7
Africa	11.7	17.1	*	*	18.3	*	48.5
America	13.6	18.6	*	*	22.4	*	54.0
Asia	54.5	69.6	5.7	6.9	76.5	9.0	49.8
Lebanon	*	4.5	*	*	6.5	*	33.9
Europe	281.9	430.4	22.5	31.4	461.7	6.8	44.1
Germany, Fed. Rep.	12.8	21.4	*	*	22.8	*	41.7
Greece	21.6	30.8	*	*	35.2	*	47.2
Italy	29.8	45.8	*	*	47.5	*	39.2
Malta	6.0	9.2	*	*	9.4	*	42.5
Netherlands	7.5	15.4	*	*	16.3	*	37.1
Poland	6.4	9.0	*	*	9.4	*	36.9
U.K. and Ireland	145.1	228.1	12.2	15.6	243.8	6.4	45.4
Yugoslavia	28.4	34.1	*	*	37.7	*	53.7
Oceania	25.4	36.0	*	5.2	41.2	12.6	55.1
New Zealand	20.3	29.9	*	4.6	34.5	13.4	55.4
PERSONS							
Born in Australia	3,861.3	4,674.7	227.9	268.3	4,943.0	5.4	61.0
Born outside Australia	1,447.2	1,681.6	92.9	108.8	1,790.4	6.1	63.0
Africa	41.4	48.7	*	*	51.0	*	65.5
America	46.7	54.2	5.2	5.6	59.9	9.4	71.1
Asia	164.3	185.6	14.3	16.1	201.7	8.0	63.4
Lebanon	18.8	19.5	*	4.5	24.0	18.7	58.4
Europe	1,105.9	1,289.4	65.8	76.5	1,366.0	5.6	62.0
Germany, Fed. Rep.	53.8	65.1	*	*	69.4	*	64.5
Greece	82.9	94.5	6.2	8.1	102.5	7.9	65.5
Italy	143.9	163.5	6.4	7.2	170.7	4.2	62.3
Malta	27.4	31.8	*	*	33.6	*	65.0
Netherlands	45.3	55.1	*	*	57.3	*	61.3
Poland	25.1	28.8	*	*	30.1	*	52.6
U.K. and Ireland	532.7	632.4	31.5	36.2	668.6	5.4	61.4
Yugoslavia	89.9	98.1	7.0	8.0	106.1	7.5	67.4
Oceania	89.0	103.7	6.2	8.2	111.9	7.4	71.4
New Zealand	78.0	91.4	5.8	7.5	98.8	7.5	72.8

(a) Excludes persons in institutions. See Explanatory notes, paragraph 15.

TABLE 10. CIVILIAN LABOUR FORCE, BORN OUTSIDE AUSTRALIA, BY EMPLOYMENT STATUS, AND PERIOD OF ARRIVAL IN AUSTRALIA, AUGUST 1981

			Europe		Oceania		Total				
	Africa	America	Asia	U.K. and Ireland	Other countries	New Zealand	Total	Females			Persons
								Males	Married	Total	
EMPLOYED (' 000)											
Arrived before 1961	9.3	} 6.8 {	29.3	182.0	337.5	10.7	13.7	409.2	134.6	166.7	575.8
1961-1965	7.7		17.1	114.1	100.3	6.3	7.9	158.7	66.7	91.0	249.8
1966-1970	12.3	12.1	31.8	172.4	130.6	12.9	14.4	242.2	88.9	131.4	373.6
1971-1979	16.0	30.5	92.7	138.8	76.6	38.7	43.9	241.8	108.0	156.8	398.6
1980 to survey date	*	4.9	14.7	25.2	11.9	22.9	23.7	58.1	15.2	25.7	83.8
UNEMPLOYED (' 000)											
Arrived before 1961	*	} 4.5 {	} 7.3 {	6.0	13.5	*	*	17.0	4.9	6.2	23.2
1961-1965	*			5.8	8.5	*	*	8.9	4.6	6.7	15.6
1966-1970	*	11.6	9.9	*	*	13.5	8.5	14.3	27.7		
1971-1979	*	6.6	9.8	7.0	} 5.9 {	6.7 {	16.5	6.7	13.6	30.1	
1980 to survey date	*	*	*	*			*	4.9	7.7	12.1	
LABOUR FORCE (' 000)											
Arrived before 1961	9.7	6.8	32.2	188.0	351.0	11.0	14.0	426.1	139.5	172.9	599.1
1961-1965	8.0	13.3	17.9	119.9	108.8	6.5	8.1	167.6	71.4	97.7	265.4
1966-1970	12.8	33.8	35.3	184.0	140.5	13.8	15.4	255.7	97.4	145.7	401.4
1971-1979	16.5	6.0	99.3	148.5	83.6	41.5	46.9	258.3	114.8	170.4	428.7
1980 to survey date	*	16.9	28.3	13.3	26.0	27.4	62.5	20.2	33.4	95.9	
UNEMPLOYMENT RATE (per cent)											
Arrived before 1961	*	} 8.3 {	} 8.6 {	3.2	3.9	*	*	4.0	3.5	3.6	3.9
1961-1965	*			4.8	7.8	*	*	5.3	6.5	6.9	5.9
1966-1970	*	6.3	7.0	*	*	5.3	8.7	9.8	6.9		
1971-1979	*	6.6	6.6	8.4	} 8.8 {	9.0 {	6.4	5.9	8.0	7.0	
1980 to survey date	*	*	*	*			*	24.4	22.9	12.6	
PARTICIPATION RATE (per cent)(a)											
Arrived before 1961	55.9	} 52.2 {	61.1	44.2	58.0	48.8	51.1	70.1	36.1	32.7	52.7
1961-1965	69.0		74.8	72.0	68.3	76.7	77.5	87.2	51.4	53.2	70.6
1966-1970	62.0	78.7	70.5	72.4	70.6	73.9	72.5	85.9	52.9	55.1	71.4
1971-1979	74.1	75.6	64.9	72.9	66.5	77.5	74.8	84.0	55.1	55.9	70.0
1980 to survey date	*	62.6	44.2	70.0	54.8	80.2	79.0	78.1	41.2	45.6	62.6

(a) Excludes persons in institutions. See Explanatory notes, paragraph 15.

TABLE 11. CIVILIAN LABOUR FORCE, BY AGE, AUGUST 1981

Age group (years)	Number ('000)					Participation rate (per cent)				
	Females					Females				
	Males	Married	Not married(a)	Total	Persons	Males	Married	Not married(a)	Total	Persons
15-64	4,180.9	1,482.7	984.2	2,466.9	6,647.7	85.9	46.2	62.9	51.7	69.0
15-19	402.8	13.9	340.9	354.8	757.7	62.0	46.7	57.5	57.0	59.6
20-24	585.4	153.7	291.9	445.7	1,031.0	91.3	54.7	83.6	70.7	81.1
25-34	1,131.3	461.2	171.1	632.3	1,763.6	95.3	47.5	77.3	53.0	74.1
35-44	899.2	452.8	70.9	523.7	1,422.8	95.2	57.1	65.3	58.1	77.1
45-54	709.0	300.4	62.3	362.6	1,071.7	91.3	47.9	56.3	49.1	70.7
55-59	301.4	77.2	33.1	110.3	411.7	81.1	27.0	39.1	29.7	55.4
60-64	151.8	23.5	14.0	37.5	189.3	51.2	10.7	14.5	11.8	30.9
65 and over	64.1	7.8	13.7	21.5	85.6	10.5	2.5	2.6	2.6	5.9
Total	4,245.0	1,490.5	997.9	2,488.4	6,733.4	77.5	42.3	47.8	44.3	60.7

(a) Comprises never married, widowed and divorced.

TABLE 12. LABOUR FORCE PARTICIPATION RATES, BY AGE AND BIRTHPLACE, AUGUST 1981(a)
(per cent)

Age group (years)	Born in Australia			Born outside Australia		
	Males	Females	Persons	Males	Females	Persons
15-64	86.1	51.7	68.8	87.0	52.4	70.8
15-19	63.5	57.6	60.6	55.1	55.6	55.4
20-24	92.7	71.5	82.1	89.5	68.1	79.0
25-34	96.2	52.8	74.3	94.4	54.3	74.6
35-44	96.2	56.4	76.2	94.3	62.1	79.5
45-54	92.1	48.8	69.9	91.1	50.5	73.5
55-59	81.2	29.3	54.7	83.3	31.3	58.5
60-64	50.3	12.0	29.7	55.0	11.5	35.4
65 and over	11.7	2.9	6.6	9.1	*	5.5
Total	78.1	44.8	61.0	78.8	45.7	63.0

(a) Excludes persons in institutions. See Explanatory notes, paragraph 15.

TABLE 13. EMPLOYED PERSONS: FULL-TIME AND PART-TIME STATUS, BY AGE, AUGUST 1981
('000)

	Age group (years)								Total
	15-19	20-24	25-34	35-44	45-54	55-59	60-64	65 and over	
	MALES								
Full-time workers	293.1	507.5	1,050.0	855.4	669.8	275.4	132.7	39.8	3,823.8
Part-time workers	64.6	28.9	35.3	22.2	19.5	15.3	12.7	23.1	221.5
Total	357.7	536.4	1,085.4	877.6	689.3	290.7	145.4	62.9	4,045.3
	MARRIED FEMALES								
Full-time workers	9.5	107.9	239.1	214.8	152.4	40.3	10.2	*	777.4
Part-time workers	*	33.9	193.4	218.6	139.6	35.7	12.6	4.7	640.4
Total	11.3	141.8	432.5	433.5	292.1	76.0	22.8	7.8	1,417.8
	ALL FEMALES								
Full-time workers	213.8	333.1	379.4	268.4	198.9	63.7	18.0	9.5	1,484.7
Part-time workers	80.5	73.8	213.0	232.2	152.5	44.0	18.5	11.9	826.3
Total	294.3	406.9	592.4	500.6	351.4	107.6	36.5	21.3	2,311.0
	PERSONS								
Full-time workers	506.9	840.6	1,429.4	1,123.8	868.7	339.0	150.7	49.2	5,308.5
Part-time workers	145.1	102.6	248.3	254.3	172.0	59.3	31.2	35.0	1,047.8
Total	652.0	943.3	1,677.7	1,378.2	1,040.6	398.4	181.9	84.2	6,356.3

TABLE 14. EMPLOYED PERSONS : INDUSTRY BY OCCUPATION, AUGUST 1981
(' 000)

Occupation group	Industry division										Total
	Agriculture, forestry, fishing and hunting	Mining	Manufacturing	Construction	Wholesale retail and trade	Transport and storage	Finance, property and business services	Community services	Recreation, personal and other services	Other industries	
MALES											
Professional, technical, etc.	*	10.8	69.8	14.0	27.6	6.1	95.3	211.0	20.1	63.5	520.1
Administrative, executive and managerial	*	*	62.2	20.5	133.9	13.8	43.4	10.7	31.9	20.2	342.3
Clerical	*	*	42.8	6.0	32.9	27.7	81.9	25.7	6.6	92.6	321.3
Sales	*	*	29.4	*	192.3	*	39.2	*	*	*	273.8
Farmers, fishermen, timber-getters, etc.	291.3	*	*	5.7	6.1	*	*	8.1	16.4	12.1	347.1
Miners, quarrymen and related workers	*	34.3	*	*	*	*	*	*	*	*	37.9
Transport and communication	*	*	25.8	9.2	32.3	158.9	*	8.5	*	44.9	290.8
Tradesmen, production-process workers and labourers, n.e.c.	8.1	30.3	677.9	363.9	289.5	76.7	22.6	41.2	17.5	161.0	1,688.6
Service, sport and recreation	*	*	11.5	*	12.3	10.0	18.0	79.2	78.6	10.8	223.3
Total	307.0	89.3	925.0	423.8	727.1	296.7	305.4	385.9	176.8	408.3	4,045.3
FEMALES											
Professional, technical, etc.	*	*	11.3	*	9.9	*	14.7	359.7	10.3	11.8	422.0
Administrative, executive and managerial	*	*	4.5	*	29.7	*	6.2	*	8.0	*	57.4
Clerical	6.2	*	87.9	37.2	165.8	34.1	196.8	114.7	40.5	89.9	777.2
Sales	*	*	7.4	*	259.4	*	6.4	*	9.1	*	285.6
Farmers, etc.	96.7	*	*	*	4.6	*	*	*	*	*	104.9
Transport and communication	*	*	*	*	6.0	8.3	*	5.2	*	19.4	46.8
Tradesmen, production-process workers and labourers, n.e.c. and miners, etc.	*	*	181.3	4.5	44.6	*	*	6.5	*	*	245.4
Service, sport and recreation	*	*	9.2	*	18.6	4.9	22.0	143.9	147.7	19.5	371.6
Total	107.2	8.9	305.9	48.4	538.5	52.6	249.5	636.0	219.5	144.4	2,311.0
PERSONS											
Professional, technical, etc.	*	12.1	81.0	15.5	37.5	7.4	110.0	570.7	30.4	75.3	942.1
Administrative, executive and managerial	*	*	66.7	21.4	163.6	15.2	49.6	15.1	39.9	22.2	399.7
Clerical	7.6	8.1	130.7	43.2	198.6	61.8	278.7	140.4	47.1	182.4	1,098.6
Sales	*	*	36.8	*	451.7	*	45.6	*	12.8	*	559.5
Farmers, fishermen, timber-getters, etc.	387.9	*	*	6.6	10.7	*	*	8.6	18.2	12.2	452.0
Miners, quarrymen and related workers	*	35.6	*	*	*	*	*	*	*	*	39.3
Transport and communication	*	*	29.9	9.8	38.2	167.1	5.7	13.7	*	64.3	337.7
Tradesmen, production-process workers and labourers, n.e.c.	9.5	30.6	859.2	368.3	334.0	78.1	24.3	47.7	18.8	162.3	1,932.6
Service, sport and recreation	*	*	20.7	*	30.9	14.9	40.0	223.1	226.3	30.3	594.9
Total	414.2	98.3	1,230.9	472.2	1,265.5	349.3	554.9	1,022.0	396.2	552.7	6,356.3

**TABLE 15. AVERAGE WEEKLY HOURS WORKED BY EMPLOYED PERSONS,
BY INDUSTRY AND OCCUPATION, AUGUST 1981(a)**

	Males	Females		Total	Persons
		Married	Not married(b)		
INDUSTRY					
Agriculture and services to agriculture	48.7	28.8	38.0	30.3	43.7
Forestry and logging, fishing and hunting	37.5	*	*	*	35.0
Mining	39.8	29.6	*	32.0	39.1
Manufacturing	39.2	33.3	35.4	33.9	37.9
Food beverages and tobacco	38.3	33.5	33.5	33.5	36.9
Metal products	39.1	32.8	36.8	34.0	38.5
Other manufacturing	39.4	33.3	35.7	34.0	37.9
Construction	38.3	18.4	33.8	21.6	36.6
Wholesale and retail trade	40.8	28.6	28.9	28.8	35.7
Transport and storage	39.5	27.2	34.7	30.3	38.2
Finance, property and business services	39.5	27.2	34.8	30.9	35.6
Community services	39.1	27.9	34.2	30.3	33.6
Recreation, personal and other services	40.8	25.7	26.7	26.1	32.7
Other industries	35.8	28.5	32.6	30.4	34.4
Total	39.8	28.4	32.3	29.9	36.2
OCCUPATION					
Professional, technical, etc.	40.3	28.9	35.6	31.6	36.4
Administrative, executive and managerial	46.6	36.2	42.2	37.6	45.3
Clerical	35.6	27.9	33.1	30.3	31.8
Sales	40.8	28.9	27.4	28.2	34.4
Farmers, fishermen, timber-getters, etc.	46.1	29.2	37.2	30.5	42.5
Transport and communication	39.9	27.7	31.4	28.9	38.4
Tradesmen, production-process workers and labourers, n.e.c.; and miners, quarrymen, etc.	38.1	32.6	35.2	33.3	37.5
Service, sport and recreation	36.4	23.9	26.9	24.9	29.2
Total employed	39.8	28.4	32.3	29.9	36.2

(a) Figures of hours relate to average weekly hours worked, not hours paid for. See Explanatory notes, paragraph 17. (b) Comprises never married, widowed, and divorced.

TABLE 16. EMPLOYED MARRIED FEMALES, BY INDUSTRY, OCCUPATION AND HOURS WORKED, AUGUST 1981(a)
(* 000)

	Part-time workers			Total	Full-time workers	Total
	Hours worked					
	Under 16	16-29	30-34			
INDUSTRY						
Agriculture and services to agriculture	27.8	15.6	*	47.2	39.1	86.3
Manufacturing	17.5	20.0	7.9	45.4	166.3	211.7
Construction	20.0	6.6	*	28.1	10.4	38.5
Wholesale and retail trade	75.6	59.5	15.3	150.5	156.7	307.2
Transport and storage	9.3	4.6	13.9	13.9	17.0	30.9
Finance, property and business services	25.4	20.0	9.0	54.4	73.3	127.7
Community services	76.3	80.1	32.1	188.5	207.7	396.2
Recreation, personal and other services	48.4	31.0	6.5	85.9	48.3	134.3
Other industries	12.1	10.5	*	26.6	58.7	85.3
Total	312.2	246.7	81.5	640.4	777.4	1,417.8
OCCUPATION						
Professional, technical, etc.	46.7	41.5	21.2	109.3	141.2	250.5
Administrative, executive and managerial	5.2	6.0	*	13.1	31.1	44.2
Clerical	86.7	67.9	20.3	174.9	250.0	424.9
Sales	43.0	29.9	6.9	79.7	72.7	152.4
Farmers, fisherwomen, timber-getters, etc.	27.5	16.5	4.7	48.8	39.3	88.1
Transport and communication	6.7	6.5	*	14.8	17.2	32.0
Tradeswomen, production-process workers and labourers, n.e.c.; and miners, quarry workers, etc.	17.3	17.6	6.4	41.4	133.0	174.3
Service, sport and recreation	79.1	60.8	18.6	158.5	92.9	251.4
Total	312.2	246.7	81.5	640.4	777.4	1,417.8

(a) Hours worked in the survey week. See Explanatory notes, paragraph 17 for definition.

TABLE 17. EMPLOYED PERSONS, BY HOURS WORKED, AUGUST 1981

	Females			Total	Persons
	Males	Married	Not married(a)		
NUMBER EMPLOYED (' 000)					
Weekly hours worked(b)—					
0(c)	207.0	69.7	43.5	113.2	320.2
1-15	136.3	294.7	108.9	403.6	540.0
16-29	207.8	277.6	85.6	363.3	571.1
30-34	258.2	129.8	73.0	202.8	460.9
35-39	456.4	175.5	177.8	353.3	809.8
40	1,359.2	302.8	279.8	582.6	1,941.8
41-44	255.0	45.8	49.5	95.3	350.2
45-48	381.7	39.8	33.3	73.1	454.9
49 and over	783.7	82.1	41.7	123.8	907.5
Total	4,045.3	1,417.8	893.2	2,311.0	6,356.3
WEEKLY HOURS WORKED(b)					
Aggregate weekly hours worked (million)	161.0	40.2	28.8	69.1	230.1
By full-time workers	157.4	29.9	26.2	56.1	213.5
By part-time workers	3.6	10.4	2.6	13.0	16.6
Average weekly hours worked	39.8	28.4	32.3	29.9	36.2
By full-time workers	41.2	38.4	37.1	37.8	40.2
By part-time workers	16.3	16.2	14.0	15.7	15.8
By wage and salary earners	38.2	28.4	32.2	30.0	35.1
By others(d)	47.1	28.4	35.0	29.1	41.8
Average weekly hours worked by persons who worked one hour or more in the survey week	42.0	29.8	33.9	31.4	38.1
By full-time workers	43.4	40.7	39.1	39.9	42.4
By part-time workers	17.0	16.9	14.6	16.4	16.5

(a) Comprises never married, widowed and divorced. (b) The figures relate to hours worked, not hours paid for. See Explanatory notes, paragraph 17. (c) Persons who had a job from which they were absent for the whole of the survey week. See Explanatory notes, paragraph 17, for definition. (d) Employers; self-employed persons; unpaid family helpers who worked 15 hours or more in the survey week.

TABLE 18. EMPLOYED PERSONS: OCCUPATIONAL STATUS OF FULL-TIME AND PART-TIME WORKERS, AUGUST 1981(a)

	Full-time workers			Part-time workers			Total		
	Males	Females	Persons	Males	Females	Persons	Males	Females	Persons
Employers	236.7	50.0	286.7	10.8	46.8	57.6	247.5	96.8	344.3
Self-employed	408.8	79.0	487.8	45.8	107.3	153.1	454.6	186.3	640.9
Wage and salary earners	3,172.1	1,348.8	4,520.9	160.2	663.4	823.6	3,332.4	2,012.2	5,344.5
Unpaid family helpers(b)	6.1	6.9	13.1	4.7	8.8	13.5	10.9	15.7	26.6
Total	3,823.8	1,484.7	5,308.5	221.5	826.3	1,047.8	4,045.3	2,311.0	6,356.3

(a) See Explanatory notes, paragraph 20. (b) Unpaid family helpers who worked 15 hours or more in the survey week.

TABLE 19. FULL-TIME WORKERS WHO WORKED LESS THAN 35 HOURS, BY REASON, AUGUST 1981 (' 000)

Reason for working less than 35 hours	Females			Total	Persons
	Males	Married	Not married(a)		
Leave, holiday or flexitime	318.7	73.2	79.2	152.4	471.1
Own illness or injury	162.8	42.7	37.1	79.8	242.5
Bad weather, plant breakdown, etc.	26.4	*	*	*	28.2
Began or left job in the survey week	11.5	*	*	5.9	17.3
Stood down, on short time, insufficient work	31.8	4.5	*	6.4	38.2
Other reasons	36.6	7.8	*	10.3	46.9
Total	587.8	131.4	125.2	256.5	844.3

(a) Comprises never married, widowed and divorced.

TABLE 20. PART-TIME WORKERS : WHETHER PREFERRED TO WORK MORE HOURS AND WHETHER LOOKING FOR FULL-TIME WORK, BY AGE, AUGUST 1981
(' 000)

	Age group (years)						Total
	15-19	20-24	25-34	35-44	45-54	55 and over	
MALES							
Total	64.6	28.9	35.3	22.2	19.5	51.1	221.5
Preferred not to work more hours	51.0	20.7	27.6	15.6	13.6	48.8	177.3
Preferred to work more hours	13.6	8.1	7.8	6.5	5.9	*	44.2
Had actively looked for full-time work(a)	5.8	7.3		4.9		*	19.3
MARRIED FEMALES							
Total	*	33.9	193.5	218.6	139.6	52.9	640.4
Preferred not to work more hours	*	28.4	177.6	197.5	131.3	51.0	587.1
Preferred to work more hours	5	5.5	15.8	21.1	8.4	*	53.3
Had actively looked for full-time work(a)	*	6.1		5.2		*	12.0
ALL FEMALES							
Total	80.5	73.8	213.0	232.2	152.5	74.3	826.3
Preferred not to work more hours	63.4	57.1	191.2	208.0	141.7	70.0	731.4
Preferred to work more hours	17.1	16.7	21.8	24.2	10.8	*	94.8
Had actively looked for full-time work(a)	7.4	7.8	5.2	5.5	*	*	28.3
PERSONS							
Total	145.1	102.6	248.3	254.3	172.0	125.5	1,047.8
Preferred not to work more hours	114.4	77.8	218.8	223.6	155.2	118.9	908.7
Preferred to work more hours	30.7	24.8	29.6	30.7	16.7	6.6	139.1
Had actively looked for full-time work(a)	13.2	11.5	8.8	7.5	4.6	*	47.6

(a) In the four weeks up to the end of the survey week.

TABLE 21. PART-TIME WORKERS : WHETHER PREFERRED TO WORK MORE HOURS AND WHETHER LOOKING FOR FULL-TIME WORK, BY HOURS WORKED, AUGUST 1981
(' 000)

	Persons who worked in the survey week Hours worked in the survey week					Persons who did not work in the survey week(a)	Total	
	1-5	6-10	11-15	16-20	21-29			30-34
MALES								
Total	31.4	49.5	21.5	31.9	33.1	45.6	8.6	221.5
Preferred not to work more hours	24.6	39.7	17.3	23.9	24.6	39.7	7.5	177.3
Preferred to work more hours	6.8	9.8	*	8.0	8.5	5.9	*	44.2
Had actively looked for full-time work(b)	6.4		*	4.8	5.4		*	19.3
MARRIED FEMALES								
Total	73.7	109.7	103.2	125.2	121.4	81.5	25.7	640.4
Preferred not to work more hours	61.5	97.5	94.0	117.4	115.4	76.8	24.4	587.1
Preferred to work more hours	12.2	12.1	9.2	7.8	6.0	4.7	*	53.3
Had actively looked for full-time work(b)	5.7			4.5		*	*	12.0
ALL FEMALES								
Total	110.2	159.4	121.4	149.2	146.1	106.7	33.3	826.3
Preferred not to work more hours	90.6	139.0	107.4	132.9	132.6	98.3	30.7	731.4
Preferred to work more hours	19.6	20.5	14.0	16.3	13.5	8.4	*	94.8
Had actively looked for full-time work(b)	4.6	5.7	*	5.9	4.7	*	*	28.3
PERSONS								
Total	141.5	208.9	142.8	181.1	179.1	152.2	42.0	1,047.8
Preferred not to work more hours	115.2	178.6	124.6	156.8	157.2	138.0	38.2	908.7
Preferred to work more hours	26.3	30.3	18.2	24.3	22.0	14.3	*	139.1
Had actively looked for full-time work(b)	6.9	9.8	5.9	10.8	7.8	4.7	*	47.6

(a) Persons who had a part-time job from which they were absent for the whole of the survey week. (b) In the four weeks up to the end of the survey week.

TABLE 22. EMPLOYED PERSONS : EMPLOYMENT/POPULATION RATIOS BY AGE AND MARITAL STATUS, AUGUST 1981
 (per cent)

Age group (years)	Males			Females			Persons
	Married	Not married(a)	Total	Married	Not married(a)	Total	
15-64	88.5	70.3	81.8	43.9	56.2	48.0	65.1
15-19	*	54.9	55.1	37.9	47.7	47.3	51.2
20-24	92.9	81.1	83.6	50.5	75.9	64.6	74.2
25-34	94.2	84.1	91.5	44.5	72.2	49.7	70.5
35-44	94.7	81.2	92.9	54.6	61.8	55.5	74.6
45-54	91.1	72.9	88.7	46.5	53.6	47.6	68.7
55-59	80.4	65.5	78.2	26.5	37.4	29.0	53.6
60-64	50.5	40.9	49.1	10.4	14.1	11.5	29.7
65 and over	10.9	8.5	10.3	2.5	2.6	2.5	5.8
Total	78.5	65.5	73.9	40.2	42.8	41.2	57.3

(a) Comprises never married, widowed and divorced.

TABLE 23. UNEMPLOYED PERSONS, BY AGE, STATES, AUGUST 1981
 (' 000)

Age group (years)	New South Wales	Victoria	Queensland	South Australia	Western Australia	Tasmania	Australia(a)
MALES							
15-19	11.7	13.8	5.1	6.7	4.2	2.4	45.1
20-24	15.8	12.0	7.1	6.3	4.7	1.9	49.0
25-34	15.0	10.3	7.0	5.9	5.4	1.5	45.9
35 and over	18.2	14.2	9.2	9.0	5.8	2.0	59.6
Total	60.8	50.4	28.3	27.9	20.2	7.8	199.7
FEMALES							
15-19	16.2	16.4	9.9	8.6	5.8	2.4	60.5
20-24	11.3	10.4	6.7	3.9	3.9	2.4	38.7
25-34	11.9	10.4	7.8	4.3	3.6	*	39.9
35 and over	11.6	12.6	5.9	3.6	3.0	*	38.2
Total	51.1	49.8	30.3	20.4	16.3	5.9	177.4
PERSONS							
Looking for full-time work—							
15-19	22.0	26.1	13.1	14.2	9.3	4.5	91.0
20-24	24.6	19.7	12.5	9.8	7.9	3.0	79.5
25-34	22.4	15.9	12.5	8.7	7.7	2.2	70.7
35-44	12.7	8.0	4.9	4.3	3.2	1.9	34.8
45-54	7.6	7.1	4.1	3.6	2.7	*	26.4
55 and over	4.9	5.6	*	3.2	*	*	18.4
Total	94.2	82.5	49.6	43.9	32.0	12.4	320.9
Total—							
15-19	27.9	30.3	15.0	15.3	10.1	4.8	105.6
20-24	27.1	22.4	13.8	10.2	8.6	3.3	87.7
25-34	26.9	20.7	14.8	10.2	9.0	2.6	85.9
35-44	15.5	11.7	6.7	4.8	4.0	2.2	44.7
45-54	8.9	8.6	5.0	4.0	3.1	*	31.0
55 and over	5.5	6.6	*	3.8	*	*	22.1
Total	111.8	100.2	58.6	48.3	36.5	13.7	377.1

(a) Includes the Northern Territory and the Australian Capital Territory.

TABLE 24. UNEMPLOYED PERSONS, BY AGE AND WHETHER LOOKING FOR FULL-TIME OR PART-TIME WORK, AUGUST 1981

	Number unemployed ('000)					Unemployment rate (per cent)				
	Males		Females		Persons	Males		Females		Persons
	Married	Total	Married	Total		Married	Total	Married	Total	
LOOKING FOR FULL-TIME WORK										
<i>Total</i>	72.3	187.0	42.6	133.8	320.9	2.6	4.7	5.2	8.3	5.7
Aged 15-19 years	*	40.7	*	50.3	91.0	*	12.2	*	19.1	15.2
Looking for first job	*	12.5	*	17.9	30.4
Attending school!	*	*	*	*	7.1	n.a.	n.a.	n.a.	n.a.	n.a.
Aged 20 years and over	71.7	146.4	40.8	83.5	229.9	2.6	4.0	5.0	6.2	4.6
20-24 years	6.5	46.4	7.7	33.1	79.5	4.9	8.4	6.7	9.0	8.6
25-34 years	23.7	44.3	16.1	26.4	70.7	2.9	4.0	6.3	6.5	4.7
35-44 years	14.3	20.5	10.9	14.3	34.8	1.8	2.3	4.8	5.1	3.0
45-54 years	13.9	18.6	5.1	7.9	26.4	2.3	2.7	3.2	3.8	3.0
55 years and over	13.3	16.6	*	*	18.4	3.3	3.6	*	*	3.3
Aged 15-64 years	72.3	186.6	42.6	133.8	320.4	2.7	4.7	5.2	8.3	5.7
LOOKING FOR PART-TIME WORK										
<i>Total</i>	*	12.7	30.1	43.5	56.2	*	5.4	4.5	5.0	5.1
Aged 15-19 years	*	4.5	*	10.2	14.6	*	6.5	*	11.2	9.2
Attending school	*	*	*	6.7	9.5	*	*	*	13.2	10.2
Aged 20 years and over	*	8.2	29.2	33.4	41.6	*	5.0	4.4	4.3	4.4
20-24 years	*	*	*	5.7	8.3	*	*	*	7.1	7.5
25-34 years	*	*	12.5	13.5	15.1	*	*	6.1	6.0	5.7
35-44 years	*	*	8.4	8.8	9.9	*	*	3.7	3.7	3.7
45-54 years	}	*	*	5.4	8.3	*	*	*	2.3	2.7
55 years and over	*	*	*	*	*	*	*	*	*	*
Aged 15-64 years	*	11.9	30.1	43.4	55.2	*	5.6	4.5	5.1	5.2
TOTAL										
<i>Total</i>	75.0	199.7	72.7	177.4	377.1	2.6	4.7	4.9	7.1	5.6
Aged 15-19 years	*	45.1	*	60.5	105.6	*	11.2	*	17.1	13.9
Attending school	*	5.9	*	10.7	16.6	*	12.9	*	19.2	16.3
Aged 20 years and over(a)	74.4	154.5	70.0	116.9	271.4	2.6	4.0	4.7	5.5	4.5
20-24 years	6.5	49.0	11.9	38.7	87.7	4.8	8.4	7.7	8.7	8.5
25-34 years	24.4	45.9	28.7	39.9	85.9	2.9	4.1	6.2	6.3	4.9
35-44 years	14.6	21.5	19.3	23.1	44.7	1.8	2.4	4.3	4.4	3.1
45-54 years	14.8	19.7	8.3	11.3	31.0	2.4	2.8	2.8	3.1	2.9
55-59 years	9.1	10.7	*	*	13.3	3.4	3.5	*	*	3.2
60-64 years	4.5	6.4	*	*	7.4	3.4	4.2	*	*	3.9
Aged 15-64 years	74.6	198.4	72.7	177.2	375.6	2.7	4.7	4.9	7.2	5.7

(a) Includes unemployed persons aged 65 years and over, details for whom are not shown separately.

TABLE 25. UNEMPLOYED PERSONS, BY AGE AND BIRTHPLACE, AUGUST 1981

	Number unemployed ('000)			Unemployment rate (per cent)		
	Males	Females	Persons	Males	Females	Persons
	BORN IN AUSTRALIA					
<i>Total</i>	139.4	128.9	268.3	4.5	6.9	5.4
Looking for full-time work	129.4	98.5	227.9	4.5	8.2	5.6
Looking for part-time work	9.9	30.4	40.4	5.5	4.5	4.7
Aged 15-19 years	38.4	49.8	88.2	11.0	16.4	13.5
Aged 20 years and over	101.0	79.1	180.1	3.7	5.1	4.2
20-24 years	40.2	31.6	71.8	8.3	8.5	8.4
25-34 years	30.7	27.9	58.6	3.7	6.0	4.5
35 years and over	30.1	19.6	49.7	2.1	2.7	2.3
BORN OUTSIDE AUSTRALIA						
<i>Total</i>	60.3	48.5	108.8	5.2	7.8	6.1
Looking for full-time work	57.6	35.4	92.9	5.2	8.4	6.0
Looking for part-time work	*	13.1	15.8	*	6.6	6.3
Aged 15-19 years	6.8	10.7	17.5	12.8	21.0	16.8
Aged 20 years and over	53.6	37.8	91.3	4.8	6.6	5.4
20-24 years	8.8	7.1	15.9	8.5	9.5	8.9
25-34 years	15.2	12.0	27.2	5.2	7.3	5.9
35 years and over	29.5	18.6	48.1	4.1	5.7	4.6

TABLE 26. UNEMPLOYED PERSONS, BY DURATION OF UNEMPLOYMENT AND AGE, ETC., AUGUST 1981

Duration of unemployment (weeks)	Age group (years)				Total(a)	Married	Not married(b)	Looking for—	
	15-19	20-24	25-34	35-54				Full-time work	Part-time work
MALES									
— '000 —									
Under 2	*	*	8.5	*	14.5	4.8	9.7	11.5	5.7
2 and under 4	5.0	6.3	8.5	4.6	21.3	7.2	14.1	18.6	
4 and under 8	8.4	11.1		6.2	6.2	32.8	9.7	23.1	31.0
8 and under 13	5.4	5.6	7.9	*	22.3	8.7	13.6	21.3	4.8
13 and under 26	7.4	6.2	5.9	6.5	27.2	9.7	17.5	26.4	
26 and under 39	9.7	6.9	6.2	5.7	26.9	6.6	20.3	25.8	6.7
39 and under 52	6.4	4.6	4.9	5.1	6.9	*	*	6.7	
52 and under 65					13.2	5.7	7.5	13.1	*
65 and under 78	6.4	*	*	*	7.1	*	4.6	6.5	*
78 and under 91									
91 and under 104	6.4	*	*	*	*	*	4.6	*	*
104 and over									
Total	45.1	49.0	45.9	41.3	199.7	75.0	124.7	187.0	12.7
— weeks —									
Average (mean) duration	24.5	26.7	38.2	49.8	38.0	48.8	31.6	39.0	24.3
Median duration	14.6	10.6	13.6	23.8	17.3	22.6	14.4	18.5	5.4
FEMALES									
— '000 —									
Under 2	4.6	6.9	5.0	5.0	19.1	10.7	8.3	10.5	8.6
2 and under 4	5.7	6.9	6.9	7.3	19.8	10.3	9.6	12.2	7.6
4 and under 8	7.6		6.6	6.9	7.3	24.9	10.7	14.3	20.4
8 and under 13	8.7	5.6	5.0	7.9	23.0	9.8	13.2	18.0	5.0
13 and under 26	10.8	4.9	4.8	7.9	25.0	9.0	16.0	18.2	6.8
26 and under 39	12.0	5.7	6.0	5.1	26.0	8.8	17.1	20.4	5.6
39 and under 52	6.3	5.7	6.0	*	7.9	6.2	5.4	6.8	5.4
52 and under 65					10.0		6.3	8.0	
65 and under 78	4.9	4.6	5.4	*	4.9	*	5.0	5.6	5.4
78 and under 91					4.9		5.0	5.6	
91 and under 104	4.9	4.5	*	*	4.9	*	5.0	13.1	
104 and over					4.5		4.8	15.0	5.3
Total	60.5	38.7	39.9	34.4	177.4	72.7	104.7	133.8	43.5
— weeks —									
Average (mean) duration	26.0	39.5	23.4	40.7	31.7	27.7	34.5	35.6	19.7
Median duration	17.4	13.7	9.2	16.9	14.0	10.4	18.7	17.2	9.0
PERSONS									
— '000 —									
Under 2	7.5	8.1	9.4	6.6	33.5	15.5	18.0	22.0	11.6
2 and under 4	10.7	9.2	11.1	8.1	41.1	17.5	23.7	30.8	10.4
4 and under 8	15.9	17.7	13.1	9.9	57.7	20.4	37.4	51.4	6.3
8 and under 13	14.1	11.2	12.9	6.5	45.3	18.5	26.8	39.3	6.0
13 and under 26	18.2	11.1	10.7	10.7	52.1	18.6	33.5	44.5	7.6
26 and under 39	21.6	10.8	8.8	9.1	52.9	15.5	37.4	46.1	6.8
39 and under 52	*	7.6	*	*	14.8	6.5	8.3	13.5	7.5
52 and under 65	5.0		5.5	5.6	23.2	9.4	13.8	21.1	
65 and under 78	*	*	*	*	*	*	*	*	
78 and under 91	*	*	*	*	8.8	4.9	6.1	7.9	
91 and under 104	*	*	*	*	*	*	*	*	
104 and over	4.8	7.9	8.3	12.7	40.6	19.6	21.0	37.4	
Total	105.6	87.7	85.9	75.7	377.1	147.6	229.4	320.9	56.2
— weeks —									
Average (mean) duration	25.4	32.4	31.3	45.7	35.1	38.4	32.9	37.6	20.8
Median duration	16.3	11.9	11.6	21.1	15.7	14.4	16.5	18.0	7.9

(a) Includes persons aged 55 years and over, details for whom are not shown separately.

(b) Comprises never married, widowed and divorced.

TABLE 27. UNEMPLOYED PERSONS, BY INDUSTRY AND OCCUPATION OF LAST FULL-TIME JOB AND DURATION OF UNEMPLOYMENT, AUGUST 1981(a)
(' 000)

	Duration of unemployment (weeks)							Total
	Under 4	4 and under 8	8 and under 13	13 and under 26	26 and under 39	39 and under 65	65 and over	
Had worked for two weeks or more in a full-time job in the last two years	45.7	47.3	35.6	39.5	31.4	26.1	8.3	234.0
Industry division—								
Manufacturing	12.3	13.4	7.4	9.9	8.7	8.4	*	62.5
Construction	6.1	5.5	7.1	10.0	5.0			23.8
Wholesale and retail trade	11.3	10.3	10.7	10.0	9.2	6.0	*	59.5
Finance, property and business services	*	4.5			4.6			10.9
Community services	8.7		7.1		*	*	*	18.8
Recreation, personal and other services	7.1		6.7		5.7		*	20.3
Other industries	6.6	7.7	5.8	6.4	5.8	6.1		38.4
Occupation group(b)—								
Professional, technical, etc.	6.6		4.5		*	*	*	12.3
Clerical	6.9	6.6	4.6	7.2		*	*	28.3
Sales	6.1	*	5.0	6.1	4.6	*	*	29.4
Farmers, fishermen, etc.	4.9		7.2		*	*	*	14.4
Transport and communication	*	4.7		*	*	*	*	9.0
Tradesmen, production-process workers and labourers, n.e.c.	18.9	23.0	14.8	17.6	14.9	13.8	*	107.2
Service, sport and recreation	5.3	5.6	*	4.6	6.7		*	26.6
Other(c)	20.9	10.4	9.7	12.6	21.6	11.9	48.0	135.1
Looking for first job	9.5	5.4	*	7.0	12.5	5.2	9.8	53.4
Looking for full-time work	4.5	7.4		*	10.9	*	9.7	40.2
Other	11.4	5.0	5.7	5.6	9.1	6.8	38.1	81.7
Stood down	8.0							8.0
Total	74.6	57.7	45.3	52.1	52.9	38.0	56.3	377.1

(a) Duration of unemployment is not available for some industry divisions and occupation groups because of the high standard error of the estimates. (b) Excludes administrative, executive and managerial workers; and miners, quarrymen and related workers. (c) Had never worked for two weeks or more in a full-time job or had not done so in the last two years. Industry and occupation were not obtained for these persons.

TABLE 28. UNEMPLOYED PERSONS AGED 15 TO 19 YEARS, BY DURATION OF UNEMPLOYMENT AND WHETHER OR NOT ATTENDING SCHOOL, AUGUST 1981(a)

	Attending school	Not attending school		Total
		Left school before 1980	Left school 1980 to survey date	
NUMBER (' 000)				
Duration of unemployment (weeks)—				
Under 4	4.8	5.7	7.6	18.1
4 and under 13	} 8.2 {	15.6	10.0	30.1
13 and under 26		8.1	6.3	18.2
26 and over	*	23.2	12.5	39.3
Total	16.6	52.6	36.4	105.6
AVERAGE (MEAN) DURATION OF UNEMPLOYMENT (weeks)				
Males	9.6	34.3	17.2	24.5
Females	15.9	33.8	19.3	26.0
Persons	13.6	34.0	18.3	25.4
Looking for—				
Full-time work	16.9	35.2	17.9	27.3
Part-time work	11.2	*	*	13.8
MEDIAN DURATION OF UNEMPLOYMENT (weeks)				
Males	7.3	22.3	12.3	14.6
Females	15.4	19.9	16.2	17.4
Persons	10.8	21.0	14.2	16.3
Looking for—				
Full-time work	12.4	21.8	13.9	17.6
Part-time work	7.0	*	*	9.3

(a) For employment status of persons aged 15-19 years see Table 6.

TABLE 29. UNEMPLOYED PERSONS, BY ACTIVE STEPS TAKEN TO FIND WORK AND AGE, AUGUST 1981(a)
(' 000)

Age group (years)	Checked or registered with an employment agency	Wrote, phoned or applied in person to an employer for work	Took other active steps to find work	Total(b)
MALES				
15-19	35.8	7.0	*	45.1
20-24	42.4	*	*	49.0
25 and over	90.9	10.4	*	105.5
Total	169.2	21.7	5.3	199.7
FEMALES				
15-19	46.8	11.9	*	60.5
20-24	29.4	8.4	*	38.7
25 and over	35.5	31.3	7.0	78.1
Total	111.7	51.6	9.6	177.4
PERSONS				
15-19	82.6	18.8	*	105.6
20-24	71.9	12.8	*	87.7
25 and over	126.4	41.7	9.3	183.7
Total	280.9	73.3	14.8	377.1

(a) Active steps were recorded in order of response by persons in the survey and only one active step was recorded for each person. (b) Includes unemployed persons stood down for the whole of the survey week.

TABLE 30. PERSONS NOT IN THE LABOUR FORCE, BY AGE AND MARITAL STATUS, ETC., AUGUST 1981

Age group (years)	Males			Females			Persons	Proportion of population(b) — per cent —
	Married	Not married(a)	Total	Married	Not married(a)	Total		
— ' 000 —								
15-19	*	246.7	247.0	15.9	251.8	267.7	514.7	40.4
20-24	*	52.5	55.9	127.2	57.3	184.5	240.4	18.9
25-34	25.3	30.2	55.5	509.7	50.3	560.0	615.5	25.9
35-44	29.4	15.7	45.1	340.7	37.6	378.3	423.4	22.9
45-54	45.2	22.5	67.7	327.4	48.3	375.6	443.3	29.3
55-59	53.5	16.8	70.2	209.0	51.6	260.6	330.9	44.6
60-64	121.0	23.4	144.4	196.1	82.9	279.0	423.4	69.1
65-69	168.0	35.0	203.1	151.8	119.0	270.8	473.9	89.5
70 and over	240.0	101.5	341.5	156.2	391.4	547.6	889.2	96.7
Total	686.0	544.3	1,230.3	2,034.1	1,090.2	3,124.3	4,354.7	39.3

(a) Comprises never married, widowed and divorced. (b) Persons not in the labour force as a percentage of the civilian population in the same group.

TABLE 31. PERSONS NOT IN THE LABOUR FORCE, BY WHETHER LOOKING FOR WORK, ETC., AUGUST 1981
(' 000)

	Males			Females			Persons
	Married	Not married(a)	Total	Married	Not married(a)	Total	
Looking for work	8.1	19.7	27.8	34.5	20.3	54.7	82.5
Took active steps to find work but not available to start work in the survey week(b)	*	14.0	17.0	8.1	9.7	17.8	34.8
Did not take active steps to find work	5.1	5.7	10.8	26.3	10.6	36.9	47.7
Not looking for work	651.9	475.2	1,127.1	1,984.8	980.2	2,964.9	4,092.0
Permanently unable to work(b)	13.8	8.7	22.5	*	13.9	18.2	40.7
In institutions	12.2	40.7	52.9	10.6	75.9	86.5	139.4
Total	686.0	544.3	1,230.3	2,034.1	1,090.2	3,124.3	4,354.7

(a) Comprises never married, widowed and divorced. (b) For reasons other than own temporary illness or injury.

GROSS FLOWS

In order to minimise respondent fatigue and at the same time maintain continuity within the population survey sample, one eighth of the dwellings in the sample (except the large non-private dwellings) are replaced after each survey. Adoption of this rotation procedure, whereby about seven eighths of the sample remains unchanged from one month to the next, enables more reliable measurements of changes in the labour force characteristics of the population to be made than would be possible if a new sample were introduced each month.

Because a high proportion of private dwellings selected in one survey remains in the sample for the following survey, it is possible to match the characteristics of most of the persons in those dwellings from one month to the next, to record any changes that occur, and hence to produce estimates of flows between the different categories of the population and labour force.

The procedures used to select persons in non-private dwellings preclude the possibility of matching any of them who may be included in successive surveys. For this and other reasons, including the mobility of the population and non-response in either or both surveys, about 10 per cent of persons in those dwellings which are included in the sample in successive months cannot be matched. Those who can be matched represent about 80 per cent of all persons in the survey.

Changes in the characteristics of this latter group are shown in Table 32. About one half of the remaining (unmatched) 20 per cent of persons in the survey are likely to have characteristics similar to those in the matched group, but the characteristics of the other half are likely to be somewhat different.

Gross flow estimates shown in the following table relate only to those persons in private dwellings for whom information was obtained in successive surveys. The expansion factors used in calculating the estimates were those applying to the second of each pair of months.

Although it is not possible to provide gross flow estimates for all persons in the survey it is considered that the estimates derived from matched records will be a useful guide to the magnitude of the movements between categories which underlie the changes in monthly levels.

While every effort is made to reduce non-sampling errors to a minimum, any such errors affecting employment status will tend to accumulate in the gross flow statistics rather than to cancel out. The estimates are also subject to sampling variability, as explained in paragraphs 3 to 5 of the Technical note. For these reasons the estimates of flows should be used with caution. The standard errors may be obtained from Table A on page 27.

TABLE 32. ESTIMATES, DERIVED FROM MATCHED RECORDS, OF EMPLOYMENT STATUS IN JULY 1981 AND AUGUST 1981, AND GROSS CHANGES (FLOWS) ('000)

		Females			Persons
		Males	Married	Total	
Employment status in—					
July 1981	August 1981				
Employed full time	Employed full time	2,997.9	571.6	1,083.3	4,081.3
	Employed part time	38.1	42.4	57.4	95.4
	Unemployed	25.9	*	9.4	35.3
	Not in the labour force	37.5	22.6	30.8	68.3
Employed part time	Employed full time	33.6	37.5	49.6	83.2
	Employed part time	111.9	435.3	544.3	656.2
	Unemployed	5.2	7.4	13.2	18.4
	Not in the labour force	20.2	52.3	65.9	86.1
Unemployed	Employed full time	25.5	*	14.1	39.6
	Employed part time	6.6	9.1	15.6	22.3
	Unemployed	96.5	24.8	76.3	172.8
	Not in the labour force	16.2	19.9	35.9	52.1
Not in the labour force	Employed full time	21.1	15.5	21.9	43.0
	Employed part time	19.3	49.1	64.6	83.9
	Unemployed	17.6	20.3	32.4	50.0
	Not in the labour force	825.9	1,538.2	2,278.8	3,104.7
Total flows into	Employed(a)	72.5	76.7	116.2	188.7
	Full time	80.1	55.9	85.6	165.7
	Part time	64.0	100.6	137.6	201.6
	Unemployed	48.6	31.6	55.0	103.7
	Not in the labour force	73.9	94.8	132.6	206.5
Total flows out of	Employed(a)	88.8	86.2	119.3	208.0
	Full time	101.4	68.8	97.6	199.0
	Part time	58.9	97.2	128.7	187.6
	Unemployed	48.3	32.0	65.7	114.0
	Not in the labour force	58.0	84.9	118.9	176.9
Total changes of status		195.1	203.1	303.8	498.8
Population represented by the matched sample		4,298.9	2,852.8	4,393.5	8,692.5

(a) Estimates in this category may be less than the sum of the estimates for employed full time and employed part time as the estimates in the latter two categories include movements between those two categories.

NOTE: When comparing figures for different periods, it is important to take into account the population represented by the matched sample, as shown in the last line of the table.

TECHNICAL NOTE

For more information on sample design, estimation procedure and reliability of the estimates, for current and earlier surveys, reference should be made to the Technical note in *The Labour Force, Australia, 1978* (6204.0).

Estimation procedures

2. The labour force estimates are derived from the population survey by use of a complex ratio estimation procedure, which ensures that the survey estimates conform to an independently estimated distribution of the population by age and sex, rather than to the age and sex distribution within the sample itself.

Reliability of the estimates

3. Two types of error are possible in an estimate based on a sample survey: sampling error and non-sampling error. The *sampling error* is a measure of the variability that occurs by chance because a sample, rather than the entire population, is surveyed. Since the estimates in this section are based on information obtained from occupants of a sample of dwellings the estimates and the movements derived from them are subject to sampling variability; that is, they may differ from the figures that would have been produced if all dwellings had been included in the surveys. One measure of the likely difference is given by the *standard error*, which indicates the extent to which an estimate might have varied by chance because only a sample of dwellings was included. There are about two chances in three that a sample estimate will differ by less than one standard error from the figure that would have been obtained if all dwellings had been included, and about nineteen chances in twenty that the difference will be less than two standard errors. The standard error can also be expressed as a percentage of the estimate, and this is known as the *relative standard error*.

4. Space does not allow for the separate indication of the standard errors of all estimates in this section. Standard errors of estimates for the latest month and of estimates of movements since the previous month are shown in Table 1. Standard errors of other estimates and other monthly movements for periods from February 1978 should be determined by using Tables A and B on page 28. Standard errors of estimates and movements for periods prior to February 1978 were published in the Technical note in *The Labour Force, Australia, 1978* (6204.0).

5. The size of the standard error increases with the level of the estimate, so that the larger the estimate the larger the standard error. However, it should be noted that the larger the sample estimate the smaller will be the standard error in percentage terms. Thus, larger sample estimates will be relatively more reliable than smaller estimates.

6. As the standard errors in Table A show, *the smaller the estimate the higher is the standard error*. Very small estimates are subject to such high standard errors (relative to the size of the estimate) as to detract seriously from their value for most reasonable uses. In the tables in this section, estimates below the levels shown in Table A, and percentages based on such estimates, have not been included. Although figures for these small components can in some cases be derived by subtraction, they should not be regarded as reliable. See paragraph 9 concerning higher cut-off points for some estimates.

7. The movement in the level of an estimate is also subject to sampling variability. The standard error of the movement depends on the levels of the estimates from

which the movement is obtained rather than the size of the movement. An indication of the magnitude of standard errors of monthly movements is given in Table B on page 23. The estimates of standard error of monthly movements apply only to estimates of movements between two consecutive months. Movements between corresponding months of consecutive quarters (quarterly movements), corresponding months of consecutive years (annual movements) and two other non-consecutive months, will generally be subject to somewhat greater sampling variability than is indicated in Table B. A guide to the standard errors of quarterly movements for periods from February 1978 can be obtained by multiplying the figures in the table of standard errors of monthly movements (Table B) by 1.4. A guide to the standard errors of annual movements for periods from February 1978 can be obtained by multiplying the figures in the table of standard errors of estimates (Table A) by 1.4. When using Table A or Table B to calculate standard errors of movements, refer to the larger of the two estimates from which the movement is derived.

8. Examples of the calculation and use of standard errors are given below:

- (a) From Table A it will be seen that the estimate of 187,000 unemployed males looking for full-time work in August 1981 has a standard error of about 5,000. Therefore there are about two chances in three that the number that would have been obtained if all dwellings had been included in the survey would have been within the range 182,000 to 192,000 and about nineteen chances in twenty that it would have been within the range 177,000 to 197,000.
- (b) The estimate of movement in the number of unemployed males looking for full-time work from July 1981 to August 1981 is an increase of 4,900. Table B relates the standard error of the monthly movement to the larger of the two estimates from which the movement is derived. In this case the August 1981 estimate (187,000) is the larger. From Table B it will be seen that the standard error of the monthly movement is about 4,200. Therefore there are about two chances in three that if all dwellings had been included in the surveys the movement would have been within the range +700 to +9,100 and about nineteen chances in twenty that it would have been within the range -3,500 to +13,300.

9. The relative standard errors of estimates of *aggregate hours worked*, *average hours worked*, *average duration of unemployment*, and *median duration of unemployment* are obtained by first finding the relative standard error of the estimate of the total number of persons contributing to the estimate (see Table A) and then multiplying the figure so obtained by the following relevant factors.

Aggregate hours worked: 1.2
 Average hours worked: 0.5
 Average duration of unemployment: 1.5
 Median duration of unemployment: 2.0.

Because of these higher relative standard errors, estimates of aggregate hours worked, average duration of unemployment, and median duration of unemployment have higher cut-off points for publication (see paragraph 6) than other estimates as shown in Table A.

SUPPLEMENTARY AND SPECIAL SURVEYS

Although emphasis in the population survey is placed on the regular collection of data on demographic and labour force characteristics, supplementary and special surveys of particular aspects of the labour force or of other subjects are carried out from time to time. The results of these surveys are published separately.

<i>Title</i>	<i>Catalogue No.</i>
Supplementary surveys	
Australia	
Alcohol and Tobacco Consumption Patterns, February 1977	4312.0
Annual and Long Service Leave, August 1974; May 1979	6317.0
Assisted and Unassisted Migrants, August 1972; March 1980	3406.0
Attendance at an Educational Institution, March 1981(a)	Not listed
Birth Expectations of Married Women, November 1976; June 1979	3215.0
Child Care Arrangements, Australia, June 1980	4401.0
Child Care—May 1969; May 1973; May 1977	4402.0
Chronic Illnesses, Injuries and Impairments—May 1968; May 1974	4305.0
Employment Status of Teenagers, August 1978(b)	6234.0
Evening and Night Work, November 1976	6329.0
Ex-service Personnel, November 1966; November 1971; October 1979	4403.0
Family Status and Employment Status of the Population, November 1974 and 1975	6223.0
Frequency of Pay—August 1974, 1976 and 1977	6320.0
Health Insurance, March 1979 and 1980	4335.0
Hearing and the Use of Hearing Aids, September 1978	4336.0
Home Ownership and Rental, November 1978	8710.0
Housing Occupancy and Costs, Australia, August 1980	8724.0
Income Distribution, 1968-69 (Consolidated and Revised Edition)	6505.0
Income Distribution, 1973-74—	
Part 1 (Tables relating to individuals)	6502.0
Part 2 (Tables relating to families)	6503.0
Part 3 (Supplementary Tables)	6504.0
Internal Migration—	
Conducted each year since 1970 (except 1976); Latest issue, 1980	3408.0
Job Tenure—February 1974; February 1975; August 1976	6211.0
Journey to Work and Journey to School—May 1970; August 1974	9205.0
Labour Force Experience—	
During 1968; 1972; 1974; 1975; 1976; 1978; 1979	6206.0
Twelve Months to February 1981 (Preliminary)	6205.0
Labour Force Status and Other Characteristics of Families, November 1974; July 1979 and 1980	6224.0
Labour Mobility—	
November 1972; February 1975, 1976, 1979 and 1980	6209.0
February 1981 (Preliminary)	6208.0
Leavers from Schools, Universities and Other Educational Institutions—	
Conducted each year since 1964. Latest issue, May 1980	6227.0
Migrants in the Labour Force, 1972 to 1976(b)	6230.0
Multiple Jobholding—	
November 1965; August 1966 and 1967; May 1971; August 1973, 1975, 1977 and 1979	6216.0
National Energy Survey, Household Appliances, Facilities and Insulation, Australia, November 1980	8212.0
Non-School Study Courses, Survey of, August 1968	Not listed
Persons Ceasing Full-time Work, Australia, May 1980	6238.0
Persons Covered by Hospital and Medical Expenditure Assistance Schemes, August 1972	4303.0
Persons Aged 15 to 64 Years: Employment Status and Period Since Leaving School, May 1976	6225.0
Persons Not in the Labour Force (including Discouraged Jobseekers)—	
November 1975; May 1977; March 1979; September 1979; March 1980;	
September 1980; March 1981	6220.0
Persons Looking for Work—	
May 1976; November 1976; May 1977; July 1978, 1979 and 1980	6222.0
School Leavers, 1970 to 1974: Their Employment Status and Education Experience in May 1975	6226.0
Superannuation, Survey of, February 1974	6319.0
The Labour Force: Country of Birth and Period of Residence, February 1972	6207.0
The Labour Force: Educational Attainment, Australia, February 1979, 1980	6235.0
Trade Union Members, November 1976	6325.0
Weekly Earnings of Employees (Distribution) August 1975 to August 1980 (annually)	6310.0
Work Patterns of Employees, November 1976	6328.0

(a) Results of this survey are contained in the Appendix to the May 1981 issue of this publication. (b) Estimates derived from labour force surveys. For more recent estimates, see the relevant tables in this publication.

SUPPLEMENTARY AND SPECIAL SURVEYS—*continued*

<i>Title</i>	<i>Catalogue No.</i>
Supplementary surveys—<i>continued</i>	
States	
Status of Immunity to Diphtheria and Poliomyelitis, Children aged 2 months and under 3 years, and 6 or 7 years, February 1972 (New South Wales)	4304.1
Superannuation, Victoria, May 1968	Not listed
Employed Married Women in the Labour Force, November 1979 (Queensland)	6203.3
Domestic Appliance and Energy Usage, South Australia, April 1979	8207.4
Housing Survey, Victoria, November 1979	8707.2
Housing Intentions of South Australians, November 1979	8705.4
Use of Health Services, South Australia, 1971	4031.4
Post School Qualifications of Tradesmen and Other Employed Persons, New South Wales, November 1979	6202.1
Private Water Bores or Wells (Perth Statistical Division), Western Australia, November 1979	8708.5
Household Energy Sources, Tasmania, August 1975; June 1978; November 1979	8204.6
Special surveys	
Dental Health (persons aged 15 years or more), February-May 1979	4339.0
Educational Experience and Intentions Survey, Australia, 1979 (Preliminary)	4211.0
Employment Benefits, February to May 1979 (Preliminary)	6332.0
Income Distribution, Australia, 1978-79:	
Individuals	6502.0
Families (Preliminary)	6506.0
Income Units (Preliminary)	6522.0
Unemployed Persons	6521.0
Sight, Hearing and Dental Health (persons aged 2 to 14 years), February-May 1979	4337.0
Sight Problems and the use of Glasses/Contact Lenses (persons aged 15 years or more), February-May 1979	4338.0
Survey of Handicapped Persons, Australia, February-May 1981 (Preliminary)	4342.0
Survey of Persons Registered with the CES as Unemployed, March 1977	6229.0
Working Conditions, February to May 1979 (Preliminary)	6333.0

PART 2. GOVERNMENT EMPLOYMENT

EXPLANATORY NOTES

This part contains details of the numbers of employees of government bodies. Figures for months prior to May 1980 were published in *Civilian Employees, Australia* (6213.0) but, as that publication was discontinued following the April 1980 issue (see paragraphs 6 to 11 below), government employment figures will now be included in publications 6202.0 and 6203.0.

2. Government employees comprise not only administrative employees but also all other employees of government bodies (Commonwealth, State, local and semi-government) on services such as railways, road transport, banks, postal and telecommunications, air transport, education (including universities, colleges of advanced education, etc.), radio, television, police, public works, factories, marketing authorities, public hospitals (other than those run by charitable or religious organisations) and departmental hospitals and institutions.

3. The numbers of employees shown in this part have been derived from returns obtained from government bodies. Generally, Commonwealth government employees are included in the figures if they are on the payroll on the last working day of the month, whereas for State and local government the reporting date is usually the last day of the last pay period ending in the month.

4. Data shown for defence forces include all permanent defence personnel in Australia and overseas. Other government employees based overseas are excluded, as are employees of foreign governments in Australia.

Comparability of Labour Force Survey Estimates and Government Employment Figures

5. The government employment figures shown in this part are not strictly comparable with the labour force survey estimates included in Part 1 of this publication and in other ABS publications. Persons in the survey are allocated to an appropriate labour force category according to their activity during the survey week. If they had more than one job in that week only the job in which they usually worked the greater number of hours is considered. The government employment figures are derived from payroll data, and although some returns are adjusted to exclude some part-time employees considered to have full-time jobs elsewhere, some persons will be included even though their government job is not their main one. Other reasons for difference are that the survey estimates are subject to sampling variability, and the reference periods of the two collections are different.

Review of ABS Employment Statistics

6. The two principal series of employment statistics produced by the ABS have been the employment series derived from the labour force survey (based on a sample of households) and the civilian employees series derived from data obtained from employers' payroll records (mainly payroll tax returns, in the case of the private sector). The former series has provided estimates of total

employment and information on the characteristics of employed persons (including employers and self-employed). The latter has provided estimates for wage and salary earners only, but with a dissection of employment by industry more detailed than that provided by the labour force survey.

7. The series have differed in coverage, definition, sources of information, methods of collection and estimation procedures. The survey estimates are subject to sampling variability and both series are subject to non-sampling errors. The payroll-based civilian employees series has suffered from the particular problem that, because of limits below which payroll tax is not levied, no information has been available to the ABS about changes in the employment levels of the large number of smaller businesses which are not liable for payroll tax. Without current information, employment for these small businesses has generally been assumed to vary in proportion to the variation in the employment of larger employers. This assumption has long been regarded by the ABS as unsatisfactory.

8. The civilian employees series and the labour force survey series have frequently displayed different movements, but from late in 1979 the survey-based series grew much more rapidly than the payroll-based series. This growing divergence led to the decision by the Australian Statistician in July 1980 that publication of the civilian employees series should be suspended and that the ABS should undertake a review of the series and also of some aspects of the employment series derived from the labour force survey.

9. Following the review and discussions held with a number of Commonwealth and State Departments which are users of the statistics, the Statistician concluded that payroll tax returns could no longer provide an adequate basis for estimates of numbers of civilian employees and wages and salaries paid. Instead it would be necessary to conduct a quarterly sample survey of about 20,000 business units in the private sector, to collect information about the number and earnings of their employees. The survey results will be supplemented by the information collected from government bodies.

10. The lead time for the development of the survey will be between one and two years. The survey questionnaire and methodology will require field testing, mainly to ensure that response burden and non-sampling errors are kept to a minimum. In addition, the coverage of small businesses in the ABS register of businesses will need to be improved, in order to provide a satisfactory sample frame for the survey.

11. For further details on the review of the employment Statistics and the future course of action to be followed by the ABS see *Information Paper: Review of ABS Employment Statistics* (6239.0).

Inquiries

12. For more information about these statistics contact Mr Terry Sharp on Canberra (062) 52 6655.

TABLE 33. GOVERNMENT EMPLOYEES, AUSTRALIA(a)
(Excluding agriculture and services to agriculture)
(' 000)

Month	Civilian employees					Defence forces(b)	Total Government
	Commonwealth	State	Northern Territory	Local	Total		
MALES							
<i>1980—</i>							
May	276.2	582.2	7.5	103.9	969.7	67.1	1,036.8
June	275.8	582.3	7.5	103.7	969.4	67.3	1,036.7
July	275.8	582.7	7.5	103.3	969.3	67.5	1,036.8
August	276.1	583.0	7.5	103.0	969.6	67.5	1,037.1
September	276.1	582.7	7.5	103.0	969.3	67.6	1,036.9
October	276.4	581.8	7.5	102.9	968.6	67.7	1,036.3
November	276.4	581.5	7.6	102.9	968.3	67.6	1,035.9
December	277.9	580.7	7.5	103.4	969.5	67.3	1,036.8
<i>1981—</i>							
January	278.2	580.2	7.6	103.8	969.6	67.9	1,037.5
February	278.3	581.8	7.5	103.2	970.8	68.0	1,038.8
March	278.3	582.7	7.6	103.7	972.3	68.1	1,040.4
April	278.3	583.3	7.7	103.1	972.5	68.1	1,040.6
May	277.9	583.0	7.7	103.0	971.6	68.1	1,039.7
June	277.8	582.0	7.7	102.5	970.0	68.2	1,038.2
FEMALES							
<i>1980—</i>							
May	121.3	408.0	6.4	25.9	561.6	4.3	565.9
June	120.7	409.0	6.5	26.1	562.3	4.3	566.6
July	121.6	410.5	6.6	26.1	564.8	4.3	569.1
August	122.4	411.8	6.6	26.3	567.1	4.3	571.4
September	122.4	415.0	6.6	26.5	570.4	4.4	574.8
October	122.8	416.4	6.6	26.8	572.6	4.4	577.0
November	123.3	416.6	6.6	27.3	573.8	4.5	578.3
December	124.5	413.4	6.6	27.5	571.9	4.4	576.3
<i>1981—</i>							
January	124.3	402.1	6.5	26.6	559.5	4.4	563.9
February	124.9	415.7	6.5	27.6	574.7	4.4	579.1
March	125.6	420.2	6.6	27.8	580.1	4.4	584.5
April	125.6	422.2	6.6	27.7	582.1	4.4	586.5
May	125.5	420.7	6.6	27.7	580.6	4.3	584.9
June	125.0	420.0	6.6	27.7	579.3	4.3	583.6
PERSONS							
<i>1980—</i>							
May	397.4	990.2	13.9	129.8	1,531.3	71.4	1,602.7
June	396.5	991.3	14.1	129.8	1,531.7	71.5	1,603.2
July	397.5	993.2	14.1	129.4	1,534.1	71.8	1,605.9
August	398.5	994.8	14.1	129.3	1,536.7	71.8	1,608.5
September	398.5	997.7	14.1	129.4	1,539.7	72.0	1,611.7
October	399.2	998.2	14.1	129.7	1,541.2	72.1	1,613.3
November	399.7	998.1	14.1	130.2	1,542.1	72.1	1,614.2
December	402.4	994.1	14.1	130.9	1,541.4	71.7	1,613.1
<i>1981—</i>							
January	402.5	982.2	14.1	130.3	1,529.1	72.3	1,601.4
February	403.2	997.5	14.1	130.8	1,545.5	72.4	1,617.9
March	403.9	1,002.9	14.2	131.4	1,552.4	72.5	1,624.9
April	403.9	1,005.6	14.3	130.8	1,554.6	72.5	1,627.1
May	403.4	1,003.7	14.3	130.7	1,552.1	72.4	1,624.5
June	402.8	1,002.0	14.3	130.2	1,549.3	72.5	1,621.8

(a) See Explanatory notes, page 31. (b) Permanent defence forces in Australia and overseas.

TABLE 34. GOVERNMENT EMPLOYEES, STATES(a)
(Excluding agriculture and services to agriculture)
(' 000)

Month	Commonwealth(b)			State			Local			Total(b)		
	Males	Females	Persons	Males	Females	Persons	Males	Females	Persons	Males	Females	Persons
NEW SOUTH WALES												
1980—												
May	87.2	38.1	125.3	195.3	138.7	334.0	49.0	7.9	56.9	331.4	184.7	516.2
June	86.9	38.0	124.9	195.2	139.5	334.7	48.6	8.0	56.6	330.7	185.5	516.2
July	86.8	38.2	125.0	195.3	139.9	335.3	48.4	7.9	56.3	330.6	186.0	516.6
August	86.7	38.4	125.1	195.6	140.3	335.9	48.3	8.0	56.3	330.6	186.7	517.3
September	86.6	38.2	124.8	195.4	141.2	336.6	48.2	8.0	56.2	330.1	187.4	517.6
October	86.8	38.6	125.4	195.2	142.5	337.7	47.8	8.2	56.0	329.8	189.3	519.0
November	86.7	38.7	125.4	195.1	142.8	337.8	48.0	8.3	56.2	329.7	189.8	519.5
December	87.4	39.3	126.8	195.4	141.7	337.1	48.0	8.5	56.4	330.8	189.5	520.3
1981—												
January	87.3	39.3	126.6	195.1	136.8	331.9	48.1	8.5	56.5	330.5	184.6	515.0
February	87.3	39.4	126.7	195.3	143.2	338.5	48.0	8.4	56.4	330.6	191.0	521.6
March	87.2	39.6	126.8	195.9	144.4	340.4	48.1	8.5	56.6	331.2	192.6	523.7
April	87.1	39.6	126.7	196.3	145.1	341.5	47.7	8.4	56.1	331.1	193.2	524.3
May	87.0	39.7	126.7	195.8	144.9	340.7	47.8	8.4	56.3	330.7	193.0	523.7
June	86.9	39.5	126.4	195.2	143.8	339.0	47.7	8.4	56.1	329.8	191.7	521.5
VICTORIA												
1980—												
May	69.0	28.4	97.5	154.0	108.7	262.7	20.7	11.7	32.5	243.7	148.8	392.6
June	68.9	28.3	97.2	154.2	108.1	262.3	20.7	11.9	32.6	243.8	148.2	392.0
July	68.8	28.6	97.4	154.2	108.7	263.0	20.7	11.9	32.6	243.8	149.3	393.1
August	69.0	28.8	97.8	154.1	109.3	263.4	20.7	11.9	32.7	243.9	150.0	393.9
September	69.1	28.7	97.8	154.0	109.9	263.9	20.8	12.0	32.7	243.8	150.7	394.4
October	69.1	28.9	98.0	153.9	110.5	264.4	20.8	12.1	33.0	243.8	151.5	395.3
November	69.0	28.8	97.8	154.2	110.4	264.7	20.7	12.5	33.1	243.9	151.7	395.6
December	69.3	29.3	98.6	154.8	110.3	265.0	21.0	12.4	33.4	245.1	151.9	397.0
1981—												
January	69.6	29.1	98.6	155.3	109.6	264.9	21.1	11.5	32.6	246.0	150.1	396.1
February	69.6	29.2	98.8	155.1	111.1	266.2	21.1	12.5	33.6	245.8	152.8	398.6
March	69.5	29.2	98.7	155.2	112.6	267.8	21.1	12.6	33.7	245.7	154.4	400.2
April	69.4	29.1	98.6	154.8	113.6	268.4	21.0	12.6	33.5	245.2	155.3	400.5
May	69.3	29.0	98.2	154.5	112.8	267.2	21.0	12.6	33.5	244.7	154.3	399.0
June	69.3	28.8	98.1	154.4	112.6	267.1	21.0	12.5	33.5	244.7	153.9	398.6
QUEENSLAND												
1980—												
May	30.1	13.1	43.2	95.5	53.5	149.1	18.4	2.4	20.9	144.1	69.1	213.1
June	30.1	13.0	43.1	95.2	53.8	149.0	18.6	2.4	21.1	143.9	69.3	213.2
July	30.1	13.1	43.2	95.2	53.7	148.9	18.6	2.5	21.0	143.9	69.2	213.1
August	30.3	13.2	43.4	95.3	53.9	149.1	18.5	2.5	21.0	144.1	69.5	213.5
September	30.3	13.3	43.6	95.2	55.4	150.6	18.6	2.5	21.2	144.1	71.2	215.3
October	30.3	13.3	43.5	94.8	55.6	150.4	18.7	2.5	21.3	143.8	71.4	215.2
November	30.4	13.4	43.8	94.7	55.5	150.2	18.6	2.6	21.2	143.7	71.5	215.2
December	30.7	13.6	44.3	93.7	54.9	148.6	18.8	2.5	21.4	143.3	71.1	214.3
1981—												
January	30.6	13.5	44.1	93.5	54.7	148.2	18.9	2.6	21.5	143.0	70.8	213.9
February	30.7	13.7	44.4	94.9	55.3	150.1	18.4	2.6	21.0	144.0	71.6	215.6
March	30.9	13.9	44.7	95.3	56.4	151.7	18.8	2.6	21.5	145.0	72.9	217.9
April	31.0	13.9	44.9	96.0	56.3	152.3	18.9	2.6	21.5	145.8	72.9	218.7
May	31.0	13.9	44.9	96.7	56.4	153.1	18.7	2.7	21.3	146.4	73.0	219.4
June	31.0	13.8	44.8	96.5	56.4	152.8	18.5	2.7	21.2	146.0	72.8	218.8

For footnotes see end of table.

TABLE 34. GOVERNMENT EMPLOYEES, STATES(a)—continued
(Excluding agriculture and services to agriculture)
(' 000)

Month	Commonwealth(b)			State			Local			Total(b)		
	Males	Females	Persons	Males	Females	Persons	Males	Females	Persons	Males	Females	Persons
SOUTH AUSTRALIA												
1980—												
May	29.9	8.2	38.2	54.3	46.2	100.5	5.5	1.5	7.0	89.8	55.9	145.7
June	29.9	8.1	38.0	54.6	46.8	101.4	5.5	1.5	7.0	90.0	56.4	146.4
July	29.9	8.3	38.2	54.8	47.2	101.9	5.4	1.5	6.8	90.1	56.9	147.0
August	29.9	8.3	38.2	54.7	47.3	102.0	5.3	1.5	6.8	89.9	57.1	147.0
September	29.8	8.3	38.1	54.6	47.3	101.9	5.4	1.5	6.9	89.8	57.0	146.9
October	29.8	8.3	38.0	54.5	47.2	101.7	5.4	1.5	6.9	89.7	57.0	146.6
November	29.8	8.3	38.1	54.5	47.5	102.0	5.4	1.6	7.0	89.7	57.3	147.0
December	29.7	8.3	38.1	54.2	46.4	100.6	5.4	1.6	7.0	89.4	56.3	145.7
1981—												
January	29.8	8.3	38.1	53.8	42.7	96.5	5.5	1.6	7.0	89.0	52.6	141.6
February	29.7	8.4	38.1	53.7	46.5	100.2	5.4	1.6	7.0	88.9	56.5	145.4
March	29.7	8.4	38.1	53.8	47.0	100.8	5.4	1.6	7.0	89.0	56.9	145.9
April	29.7	8.4	38.1	53.9	47.1	100.9	5.4	1.5	7.0	89.0	57.0	146.0
May	29.6	8.3	38.0	53.5	46.4	100.0	5.4	1.5	6.9	88.5	56.3	144.9
June	29.6	8.3	37.9	53.6	47.1	100.7	5.4	1.5	6.9	88.5	57.0	145.5
WESTERN AUSTRALIA												
1980—												
May	16.2	7.2	23.4	62.8	44.5	107.2	7.3	1.8	9.1	86.3	53.4	139.7
June	16.1	7.1	23.3	62.8	44.5	107.3	7.3	1.8	9.1	86.2	53.4	139.6
July	16.2	7.2	23.4	62.7	44.8	107.5	7.3	1.8	9.1	86.3	53.8	140.0
August	16.3	7.3	23.6	62.9	44.7	107.6	7.2	1.8	9.1	86.5	53.8	140.3
September	16.4	7.3	23.7	63.1	44.8	107.9	7.2	1.8	9.0	86.6	54.0	140.6
October	16.4	7.3	23.7	63.0	44.8	107.8	7.2	1.8	9.0	86.5	54.0	140.5
November	16.3	7.3	23.7	62.6	44.7	107.3	7.3	1.8	9.1	86.2	53.8	140.0
December	16.5	7.5	24.0	62.2	44.2	106.4	7.3	1.8	9.1	86.0	53.5	139.5
1981—												
January	16.5	7.4	23.9	62.0	42.4	104.5	7.2	1.8	9.1	85.7	51.7	137.4
February	16.4	7.4	23.9	62.2	43.6	105.8	7.3	1.9	9.1	85.9	52.9	138.8
March	16.4	7.5	24.0	62.0	43.8	105.7	7.3	1.9	9.1	85.7	53.2	138.8
April	16.4	7.6	24.0	62.0	44.0	106.0	7.2	1.9	9.1	85.6	53.4	139.0
May	16.4	7.6	24.0	62.1	44.0	106.1	7.2	1.9	9.0	85.7	53.4	139.1
June	16.4	7.5	23.9	62.0	44.1	106.1	7.1	1.9	8.9	85.5	53.5	139.0
TASMANIA												
1980—												
May	7.4	2.4	9.7	20.3	16.4	36.7	2.6	0.5	3.1	30.3	19.3	49.5
June	7.3	2.3	9.7	20.4	16.3	36.7	2.6	0.5	3.1	30.3	19.1	49.4
July	7.3	2.3	9.7	20.4	16.2	36.6	2.6	0.5	3.1	30.3	19.1	49.4
August	7.3	2.3	9.6	20.4	16.3	36.7	2.6	0.5	3.1	30.3	19.2	49.5
September	7.3	2.4	9.7	20.5	16.4	36.9	2.6	0.5	3.1	30.3	19.3	49.6
October	7.3	2.3	9.7	20.5	15.8	36.3	2.6	0.5	3.1	30.4	18.7	49.0
November	7.3	2.3	9.6	20.4	15.8	36.2	2.6	0.5	3.1	30.3	18.7	48.9
December	7.3	2.4	9.7	20.4	16.0	36.3	2.6	0.5	3.1	30.3	18.9	49.1
1981—												
January	7.3	2.4	9.7	20.5	15.8	36.3	2.6	0.5	3.2	30.4	18.7	49.2
February	7.4	2.4	9.8	20.6	16.0	36.6	2.6	0.5	3.2	30.6	19.0	49.5
March	7.5	2.4	9.8	20.5	16.0	36.5	2.6	0.6	3.2	30.6	18.9	49.5
April	7.4	2.4	9.8	20.4	16.1	36.5	2.6	0.5	3.2	30.5	19.0	49.5
May	7.4	2.4	9.7	20.4	16.3	36.6	2.6	0.5	3.2	30.3	19.2	49.5
June	7.3	2.3	9.7	20.2	16.0	36.2	2.6	0.5	3.1	30.2	18.8	49.0

(a) See Explanatory notes, page 31. (b) Excludes members of the permanent defence forces in Australia and overseas.

TABLE 30. GOVERNMENT EMPLOYEES—NORTHERN TERRITORY(a)
(Excluding agriculture and services to agriculture)
(' 000)

Month	Commonwealth(b)			Northern Territory			Local			Total(b)		
	Males	Females	Persons	Males	Females	Persons	Males	Females	Persons	Males	Females	Persons
1980—												
May	2.7	1.1	3.8	7.5	6.4	13.9	0.3	0.1	0.4	10.5	7.6	18.1
June	2.7	1.1	3.9	7.5	6.5	14.1	0.3	0.1	0.4	10.6	7.7	18.3
July	2.7	1.1	3.8	7.5	6.6	14.1	0.4	0.1	0.4	10.6	7.8	18.3
August	2.7	1.2	3.9	7.5	6.6	14.1	0.3	0.1	0.4	10.6	7.8	18.4
September	2.7	1.2	3.9	7.5	6.6	14.1	0.4	0.1	0.4	10.6	7.8	18.4
October	2.7	1.2	3.8	7.5	6.6	14.1	0.4	0.1	0.4	10.5	7.8	18.4
November	2.6	1.2	3.8	7.6	6.6	14.1	0.3	0.1	0.4	10.5	7.9	18.4
December	2.6	1.2	3.9	7.5	6.6	14.1	0.3	0.1	0.4	10.5	7.9	18.4
1981—												
January	2.6	1.2	3.9	7.6	6.5	14.1	0.4	0.1	0.5	10.6	7.8	18.4
February	2.7	1.2	3.9	7.5	6.5	14.1	0.4	0.1	0.5	10.5	7.9	18.4
March	2.6	1.2	3.8	7.6	6.6	14.2	0.3	0.1	0.5	10.6	7.9	18.5
April	2.6	1.2	3.9	7.7	6.6	14.3	0.4	0.1	0.5	10.7	7.9	18.6
May	2.6	1.2	3.9	7.7	6.6	14.3	0.4	0.1	0.5	10.7	8.0	18.6
June	2.7	1.2	3.9	7.7	6.6	14.3	0.4	0.1	0.5	10.7	8.0	18.7

(a) See Explanatory notes, page 31. (b) Excludes members of the permanent defence forces in Australia and overseas.

TABLE 36. GOVERNMENT EMPLOYEES—AUSTRALIAN CAPITAL TERRITORY(a)
(Excluding agriculture and services to agriculture)
(' 000)

Month	Commonwealth(b)		
	Males	Females	Persons
1980—			
May	33.7	22.7	56.4
June	33.8	22.7	56.5
July	33.9	22.8	56.7
August	33.9	23.0	56.9
September	34.0	23.0	57.0
October	34.1	23.0	57.2
November	34.3	23.2	57.4
December	34.2	22.9	57.1
1981—			
January	34.4	23.1	57.5
February	34.5	23.2	57.7
March	34.5	23.4	57.9
April	34.6	23.4	57.9
May	34.5	23.4	57.9
June	34.6	23.5	58.1

(a) See Explanatory notes, page 31. (b) Excludes members of the permanent defence forces in Australia and overseas.

TABLE 37. COMMONWEALTH GOVERNMENT EMPLOYEES, JUNE 1981(a)
Part I—Staff (in Australia and overseas) employed under the Public Service Act (excluding Departments of the Parliament)

<i>Body</i>	<i>Males</i>	<i>Females</i>	<i>Persons</i>
Aboriginal Affairs	462	307	769
Administrative Services(b)	4,475	1,867	6,342
Australian Electoral Office	409	352	761
Australian Government Publishing Service	737	298	1,035
Attorney-General's(b)	911	1,214	2,125
Australian Legal Aid Office	100	132	232
Commissioner for Community Relations	9	15	24
Office of the Parliamentary Counsel	13	19	32
Business and Consumer Affairs(b)	3,859	1,268	5,127
Industries Assistance Commission	228	138	366
Petroleum Products Pricing Authority	48	16	64
Trade Practices Commission	110	73	183
Capital Territory	2,631	824	3,455
Communications(b)	535	212	747
Australian Broadcasting Tribunal	72	38	110
Special Broadcasting Service	122	109	231
Defence	20,200	6,900	27,100
Education(b)	723	806	1,529
A.C.T. Schools Authority	236	681	917
Curriculum Development Centre	16	25	41
Schools Commission	50	70	120
Tertiary Education Commission	54	46	100
Employment and Youth Affairs	3,534	2,922	6,456
Finance(b)	579	397	976
Australian Government Retirement Benefits Office	164	264	428
Foreign Affairs(b)	2,279	1,803	4,082
Australian Development Assistance Bureau	268	235	503
ADAB Aid Experts	99	10	109
Health(b)	2,301	2,617	4,918
Capital Territory Health Commission	312	740	1,052
Home Affairs and Environment(b)	215	178	393
Australian Archives	189	151	340
Australian Film Commission	99	46	145
Australian Heritage Commission	10	10	20
Australian National Parks and Wildlife Service	54	15	69
Australian War Memorial	79	40	119
Great Barrier Reef Marine Park Authority	21	17	38
National Library of Australia	218	576	794
Office of the Supervising Scientist	29	13	42
Housing and Construction	8,442	1,171	9,613
Immigration and Ethnic Affairs	1,067	956	2,023
Industrial Relations(b)	283	233	516
Industrial Relations Bureau	148	67	215
Industry and Commerce	3,024	920	3,944
National Development and Energy(b)	591	222	813
Bureau of Mineral Resources	425	123	548
Primary Industry(b)	2,550	368	2,918
Bureau of Agricultural Economics	220	70	290
Prime Minister and Cabinet(b)	319	270	589
Auditor-General's Office	494	136	630
Australian Science and Technology Council	7	4	11
Office of National Assessment	49	22	71
Ombudsman	25	30	55
Public Service Board	631	483	1,114
Science and Technology(b)	965	416	1,381
Bureau of Meteorology	1,413	242	1,655
Patents, Trade Marks and Designs Office	300	207	507
Social Security	5,527	6,990	12,517
Trade and Resources	811	431	1,242
Transport(b)	10,524	1,477	12,001
Bureau of Transport Economics	81	33	114
Treasury(b)	380	190	570
Australian Bureau of Statistics	2,330	1,477	3,807
Australian Taxation Office	7,414	5,567	12,981
Royal Australian Mint	267	73	340
Veterans' Affairs	5,067	7,221	12,288
Total under Public Service Act(c)	99,804	54,843	154,647

For footnotes see end of table.

TABLE 37. COMMONWEALTH GOVERNMENT EMPLOYEES, JUNE 1981(a)—continued
Part II—Staff (in Australia) employed under other Acts

<i>Body</i>	<i>Males</i>	<i>Females</i>	<i>Persons</i>
DEPARTMENTS			
Administrative Services (Australian Federal Police)	2,409	265	2,674
Defence (naval dockyards, factories, etc.)	4,357	91	4,448
Education	1,297	2,548	3,845
Health—Capital Territory Health Commission	515	2,272	2,787
Industry and Commerce (munitions factories, weapons research, etc.)	4,392	1,642	6,034
Other	171	85	256
<i>Total departments</i>	<i>13,141</i>	<i>6,903</i>	<i>20,044</i>
OTHER BODIES			
A.C.T. Electricity Authority	477	81	558
Australian Atomic Energy Commission	1,022	214	1,236
Australian Broadcasting Commission	4,434	1,905	6,339
Australian National Railways	10,667	564	11,231
Australian National University	2,302	1,693	3,995
Australian Postal Commission	27,294	8,064	35,358
Army and Air Force Canteens Service	94	187	281
Australian Shipping Commission	3,046	173	3,219
Australian Telecommunications Commission	70,466	22,220	92,686
C.S.I.R.O.	5,641	1,889	7,530
Canberra College of Advanced Education	590	501	1,091
Commonwealth Banking Corporation	16,278	15,593	31,871
Commonwealth Accommodation and Catering Services Ltd	686	1,576	2,262
Commonwealth Serum Laboratories Commission	675	326	1,001
Departments of the Parliament	433	293	726
Health Insurance Commission	524	1,549	2,073
National Capital Development Commission	269	106	375
Overseas Telecommunications Commission	2,080	408	2,488
Qantas Airways Ltd	9,366	2,150	11,516
Reserve Bank of Australia	2,012	1,690	3,702
Snowy Mountains Engineering Corporation	359	84	443
Snowy Mountains Hydro-Electric Authority	577	59	636
Trans-Australia Airlines	6,413	2,278	8,691
Other	2,456	1,650	4,106
<i>Total other bodies</i>	<i>168,161</i>	<i>65,253</i>	<i>233,414</i>
Total under other Acts(c)(d)	181,302	72,156	253,458

(a) Excludes members of the permanent defence forces. (b) Excludes branch(es) shown separately. (c) Includes 4,903 employees overseas and 2,886 part-time employees in Australia in June 1981. (d) The totals of employment under the Public Service Act and under other Acts differ from those shown for Commonwealth Government in Table 33 because, for persons employed under the Public Service Act, overseas staff are included; also some part-time employees are excluded from Table 33 in order to avoid double counting.

PART 3. JOB VACANCIES

Surveys of job vacancies were conducted in March each year from 1974 to 1978 and quarterly, by telephone, from May 1977 to May 1978, after which they were suspended. The quarterly surveys were reintroduced in May 1979. For further details and estimates for earlier periods see *Job Vacancies, Australia, August 1981* (6231.0).

A job vacancy is defined as a job available for immediate filling on the survey date and for which recruitment action has been taken by the employer. Jobs available only to existing employees of an organisation are excluded. In this context the Australian Public Service and the Public Services of the States and the Northern Territory are treated as 'organisations'.

For more information about these statistics, contact Mr Andy Johnston on Canberra (062) 52 6568 or any of our State offices.

TABLE 38. JOB VACANCIES ('000)

AUSTRALIA									
	May 1980	August 1980	November 1980	February 1981	May 1981	August 1981	Standard error		
For males	12.5	12.6	13.3	12.6	14.4	13.3	1.4		
For females	3.6	4.3	5.5	6.0	5.1	5.4	1.0		
For males or females	13.7	13.2	15.5	14.4	16.2	16.1	1.5		
Manufacturing	9.1	9.7	9.2	10.4	10.0	9.7	0.9		
Metal products, machinery and equipment	5.4	4.4	4.4	6.1	5.8	5.7	0.6		
Basic metal and fabricated metal products; other machinery, etc.	4.6	3.4	3.6	5.0	4.1	4.0	0.6		
Transport equipment	0.8	1.0	0.9	1.1	1.7	1.6	0.1		
Other manufacturing	3.7	5.2	4.7	4.3	4.2	4.0	0.6		
Other industries	20.7	20.4	25.1	22.6	25.7	25.0	2.2		
Wholesale and retail trade	4.0	4.0	4.4	4.1	5.4	5.6	0.9		
Transport and storage; communication	1.6	1.7	1.5	1.2	1.1	1.4	0.1		
Public administration; community services	9.3	9.0	8.6	7.7	9.7	9.1	1.3		
Other	5.8	5.7	10.6	9.5	9.5	8.9	1.5		
Total	29.8	30.1	34.3	33.0	35.7	34.7	2.3		
STATES AND TERRITORIES									
Month	N.S.W.	Vic.	Qld	S.A.	W.A.	Tas.	N.T.	A.C.T.	Australia
Total—									
1980—									
August	13.3	7.8	3.9	1.0	1.8	1.0	0.5	0.8	30.1
1981—									
May	18.5	8.3	3.1	1.0	3.2	0.5	0.7	0.5	35.7
August	18.3	8.1	2.8	0.9	(a)2.9	0.6	0.6	0.5	34.7
Manufacturing—									
1980—									
August	(a)5.0	3.2	0.4	0.5	0.3	*	*	—	9.7
1981—									
May	5.6	2.9	(a)0.4	(a)0.5	(a)0.5	*	—	—	10.0
August	4.9	3.3	0.7	0.3	(a)0.4	(a)0.1	—	—	9.7
Other industries—									
1980—									
August	8.3	4.6	3.5	0.5	1.6	0.7	0.5	0.8	20.4
1981—									
May	12.8	5.4	2.7	(a)0.5	(a)2.7	0.4	(a)0.7	0.5	25.7
August	13.5	4.8	2.1	(a)0.6	(a)2.5	0.5	0.6	0.5	25.0
Government—									
1980—									
August	4.8	3.3	2.3	0.4	*	(a)0.5	0.3	0.7	12.7
1981—									
May	(a)7.4	2.8	1.3	0.3	0.8	(a)0.3	0.3	0.5	13.6
August	7.6	2.6	1.6	0.3	0.9	(a)0.4	0.3	0.4	14.0
Private—									
1980—									
August	8.5	4.5	1.6	0.6	1.3	(a)0.5	(a)0.2	(a)0.1	17.3
1981—									
May	11.0	5.5	1.8	(a)0.8	(a)2.3	(a)0.2	*	(a)0.1	22.0
August	10.8	5.6	1.2	(a)0.6	(a)2.0	(a)0.2	(a)0.3	0.1	20.8

(a) Standard error greater than 20 per cent but less than 30 per cent.