



THE LABOUR FORCE AUSTRALIA

FEBRUARY 1981

CATALOGUE No. 6203.0

AUSTRALIAN BUREAU OF STATISTICS Canberra

PHONE INQUIRIES *for more information about these statistics*—contact Mr Ivan King on Canberra (062) 52 6565 or any of our State offices.
other inquiries including copies of publications—contact Information Services on Canberra (062) 52 6627 or in any of our State offices.

MAIL INQUIRIES *write to* Information Services, ABS, P.O. Box 10, Belconnen, A.C.T. 2616 or any of our State offices.

CATALOGUE NO. 6203.0

NOON 26 MAY 1981

THE LABOUR FORCE, AUSTRALIA, FEBRUARY 1981

CONTENTS

Table

Page

1. LABOUR FORCE ESTIMATES

..	Explanatory notes	3
..	Graphs	7
	Civilian population aged 15 years and over: employment status	
1.	Australia	8
2.	Marital status	10
3.	States and Territories	10
4.	State capital cities	11
5.	Australian Capital Territory	11
	Civilian population aged 15 to 24 years (single years): employment status	
6.	Aged 15 to 19 years: whether attending school	12
7.	Aged 20 to 24 years	12
	Civilian labour force	
8.	Seasonally adjusted series	13
9.	Employment status and birthplace	14
10.	Born outside Australia, by employment status and period of arrival in Australia	15
11.	Age	16
12.	Participation rates, by age and birthplace	16
	Employed persons	
13.	Full-time and part-time status, by age	16
14.	Industry	17
15.	Industry and birthplace	17
16.	Occupation	18
17.	Occupation and birthplace	18
18.	Average weekly hours worked, by industry and occupation	19
19.	Married females, by industry and hours worked	19
20.	Hours worked	20
21.	Occupational status of full-time and part-time workers	20
22.	Full-time workers who worked less than 35 hours, by reason	20
23.	Part-time workers, whether preferred to work more hours, and whether looking for full-time work, by age	21
24.	Part-time workers, whether preferred to work more hours, and whether looking for full-time work, by hours worked	21
25.	Employment/population ratios by age and marital status	22
	Unemployed persons	
26.	Age: States	22
27.	Age and whether looking for full-time or part-time work	23
28.	Age and birthplace	23
29.	Duration of unemployment and age, etc.	24
30.	Industry and occupation of last full-time job and duration of unemployment	25
31.	Aged 15 to 19 years: duration of unemployment and whether attending school	25
32.	Active steps taken to find work, by age	26
	Persons not in the labour force	
33.	Age and marital status, etc.	26
34.	Whether looking for work, etc.	26

CONTENTS—continued

<i>Table</i>	<i>Page</i>
1. LABOUR FORCE ESTIMATES—continued	
Gross flows	
35. Estimates, derived from matched records, of employment status in January 1981 and February 1981 and gross changes (flows)	27
Technical note	
Estimation procedure	28
Reliability of the estimates	28
Population survey reports	30
NOTE. Some additional labour force survey data are included in other issues of this publication or are available on request. For details see paragraph 40 of the explanatory notes.	
2. JOB VACANCIES	
36. Job vacancies	32

1. LABOUR FORCE ESTIMATES

EXPLANATORY NOTES

Introduction

This section contains estimates of the civilian labour force derived from the population survey, which is now conducted monthly. Until February 1978, surveys were conducted in February, May, August and November each year.

2. A summary of the survey results is published in advance of this more detailed publication in *The Labour Force, Australia (Preliminary)* (6202.0). Preliminary unemployment estimates are also issued in advance of this publication in *Unemployment, Australia (Preliminary Estimates)* (6201.0).

3. Although emphasis in the survey is placed on the regular collection of data on demographic and labour force characteristics of the population, supplementary and special surveys of particular aspects of the labour force or of other subjects are carried out from time to time. Statistics from these surveys are published and are available free on request. A list of titles is given on pages 30 and 31.

The population survey

4. The survey is based on a multi-stage area sample of private dwellings (about 30,000 houses, flats, etc.) and non-private dwellings (hotels, motels, etc.), and covers about two-thirds of one per cent of the population of Australia. The information is obtained from the occupants of selected dwellings by carefully chosen and specially trained interviewers. The interviews are generally conducted during the two weeks beginning on the Monday between the 6th and 12th of each month. The information obtained relates to the week before the interview (i.e. the survey week). Because of operational problems arising from the Christmas and New Year holidays the December 1978 and 1979 surveys commenced a week earlier than usual (with most interviews being conducted during the second week) and the January 1979 and 1980 surveys commenced a week later than usual.

Scope

5. The survey includes all persons aged fifteen years and over except:

- (a) members of the permanent defence forces
- (b) certain diplomatic personnel of overseas governments, customarily excluded from census and estimated populations
- (c) overseas visitors holidaying in Australia, and
- (d) members of non-Australian defence forces (and their dependants) stationed in Australia.

Definitions

6. The labour force category to which a person is assigned depends on his *actual activity* (i.e. whether working, looking for work, etc.) during the survey week. The following definitions, which conform closely to the international standard definitions specified by the International Labour Organisation (ILO), relate only to those persons within the scope of the survey.

7. *Employed persons* comprise all those aged 15 years and over who, during the survey week:

- (a) worked for one hour or more for pay, profit, commission or payment in kind in a job or business, or on a farm (including employees, employers and self-employed persons); or
- (b) worked for 15 hours or more without pay in a family business or on a farm (i.e. unpaid family helpers); or were
- (c) employees who had a job but were not at work and were: on paid leave; on leave without pay for less than four weeks up to the end of the survey week; stood down without pay because of bad weather or plant breakdown at their place of employment for less than four weeks up to the end of the survey week; on strike or locked out; on workers' compensation and expected to be returning to their job; or receiving wages or salary while undertaking full-time study; or
- (d) were employers or self-employed persons who had a job, business or farm, but were not at work.

8. The *employment/population ratio* for any group is the number of employed persons expressed as a percentage of the civilian population aged fifteen years and over in the same group.

9. *Unemployed persons* are those aged 15 years and over who were not employed during the survey week, and

- (a) had actively looked for full-time or part-time work at any time in the four weeks up to the end of the survey week and:
 - (i) were available for work in the survey week, or would have been available except for temporary illness (i.e. lasting for less than four weeks to the end of the survey week); or
 - (ii) were waiting to start a new job within four weeks from the end of the survey week and would have started in the survey week if the job had been available then;

or (b) were waiting to be called back to a full-time or part-time job from which they had been stood down without pay for less than four weeks up to the end of the survey week (including the whole of the survey week) for reasons other than bad weather or plant breakdown.

10. *Actively looking for work* includes checking or registering with the Commonwealth Employment Service or other employment agencies; writing, telephoning or applying in person to an employer; answering a newspaper advertisement for a job; advertising or tendering for work; contacting friends or relatives; and looking on factory or employment service notice boards.

11. *Unemployed persons looking for first job* are those who had never worked for two weeks or more in a full-time job. Prior to November 1977 it comprised persons who had never had a job.

12. The *unemployment rate* for any group is the number unemployed expressed as a percentage of the labour force (i.e. employed plus unemployed) in the same group.

13. *Duration of unemployment* is the period from the time the person began looking for work or was laid off to the end of the survey week. Periods of unemployment are recorded in complete weeks and this results in a slight understatement of duration. *Average (mean) duration* is the duration obtained by dividing the aggregate number of weeks a group has been unemployed by the number of persons in that group. *Median duration* is the duration which divides unemployed persons into two equal groups, one comprising persons whose duration of unemployment is above the median and the other, persons whose duration is below it. Medians are calculated from group data, linear interpolation being used within the group which contains the median.

14. The *labour force* comprises all persons who, during the survey week, were employed or unemployed, as defined in paragraphs 7 and 9.

15. The *labour force participation rate* for any group is the labour force expressed as a percentage of the civilian population aged 15 years and over in the same group. Because it is not practicable to ascertain the birthplace of persons in institutions (who are classified as not in the labour force), labour force participation rates for persons classified by birthplace are calculated by using population estimates which exclude those in institutions.

16. *Full-time workers* are those who usually work 35 hours a week or more and others who, although usually part-time workers, worked 35 hours or more during the survey week. *Part-time workers* are those who usually work less than 35 hours a week and who did so during the survey week. When recording hours of work, fractions of an hour are disregarded.

17. *Hours of work*. The figures of aggregate hours and of average hours refer to actual hours worked during the survey week, not hours paid for. The figures may be affected by public holidays, leave, absenteeism; temporary absence from work due to sickness, injury, accident and industrial disputes; and stoppages of work due to bad weather, plant breakdown, etc. When hours of work are recorded, fractions of an hour are disregarded and this results in slightly lower figures than would be the case if actual time worked was recorded. Persons stood down for the whole of the survey week without pay because of bad weather or plant breakdown at their place of employment are regarded as employed and therefore are included (working no hours) in the calculation of average hours worked. Persons stood down in the survey week for reasons other than bad weather and plant breakdown and waiting to be called back to their job are regarded as unemployed and are therefore excluded from the calculation.

18. *Persons attending school* comprise those who, during the survey week, were enrolled full-time at secondary or high schools. Excluded are persons who were enrolled at universities, colleges of advanced education, technical colleges, other tertiary education institutions, and coaching and business schools. Persons attending school are classified as in the labour force if they were employed or unemployed as defined in paragraphs 7 and 9.

19. *Persons not in the labour force* are those who, during the survey week, were not in the categories 'employed' or 'unemployed', as defined in paragraphs 7 and 9. They include persons who were keeping house (unpaid), attending an educational institution (school, university, etc.), retired, voluntarily inactive, permanently unable to work, inmates of institutions, trainee teachers, members of contemplative religious orders, and persons whose only activity during the survey week was jury service or unpaid voluntary work for a charitable organisation.

Occupational status

20. The February, May, August and November issues of this publication include a table showing estimates of employed persons, obtained from the labour force survey, classified by occupational status, i.e. whether they were employers, self-employed persons, wage and salary earners (employees), or unpaid family helpers (who worked 15 hours or more in the survey week).

21. The estimates of wage and salary earners may differ from estimates based on information obtained from employers' payrolls (published, until April 1980, in *Civilian Employees, Australia* (6213.0)) because of differences in definition and coverage, sources of information, methods of collection, and estimating procedures etc. For a detailed discussion of the differences see paragraph 21 of the July 1980 issue of this publication.

22. Trends in the payroll-based estimates during 1979 and 1980 indicated that some revision of the series was necessary. There will be some further delay in the release of future issues.

Classification of industry and occupation

23. Industry is classified according to the *Australian Standard Industrial Classification* (ASIC), 1978 and occupation according to the *Classification and Classified List of Occupations, Revised June 1976*.

Population benchmarks

24. The population survey estimates are calculated in such a way as to conform to the independently estimated distribution of the population aged 15 years and over by age and sex. These independent estimates (benchmarks) are necessarily derived from incomplete information about population changes (deaths, internal and overseas migration) and can differ from estimates of the population subsequently published by the ABS. For estimates of the population and other demographic statistics reference should be made to *Australian Demographic Statistics Quarterly* (3101.0).

Revision of series

25. Survey estimates are not revised for the usually small amendments of population benchmarks arising from new data on deaths and migration. Revisions are made, however, after each census and when population estimation bases are reviewed. Survey estimates back to August 1966 have been recalculated to conform to revised population estimates. The estimates take account of results of the 1966, 1971 and 1976 population censuses, including estimates of under-enumeration, and incorporate a revised method of measuring overseas migration gain (i.e. by excluding movements of less than one year's duration). For information concerning these population estimates for the period June 1971 to June 1977 see *Population and Vital Statistics, Australia, June Quarter 1977* (3212.0).

26. *The new sample and revised questionnaire.* Survey estimates for February 1978 and subsequent months have been obtained by using a new sample and revised questionnaire. The new sample was selected in order to reflect the changes in the distribution of the population shown by the 1976 Population Census results. The questionnaire, which had undergone little change since 1960, except for the inclusion in 1975 of additional questions on job-seeking, was revised to provide more accurate and more detailed information concerning the labour force.

27. Copies of both the current questionnaire and the one previously used, together with a description of the main features of the questionnaire, are contained in *Information Paper: Questionnaires used in the Labour Force Survey* (6232.0).

28. Estimates for the period August 1966 to November 1977 have been revised in order to provide a series for earlier periods as comparable as possible with the February 1978 and later estimates. For periods prior to August 1976, detailed revised estimates are available only for August of each year. For February, May and November only broad revised aggregates (as in Table 1) are available. Revised estimates have been published in *The Labour Force, Australia, 1978* (6204.0), which also contains information concerning the methods used in the revision.

Comparability of series

29. When comparing estimates for February 1978 and subsequent months with those for earlier periods, it should be noted that with the introduction of monthly surveys the interviews are now conducted during a two-week period, whereas formerly the period was four weeks. This change of timing may affect the level of the figures for any month, but particularly for months during which the employment status of the population may be changing rapidly.

30. Because of the revisions, the estimates in this publication are not comparable with those shown in issues before February 1978 or in the special publications entitled *The Labour Force* (6204.0) covering the period 1964 to 1977.

31. From September 1979, industry estimates in labour force survey publications have been classified according to the 1978 version of the Australian Standard Industrial Classification (ASIC). The estimates are therefore not strictly comparable with those for periods prior to September 1979, which were classified according to the 1969 version of ASIC.

32. Occasionally the estimates of month-to-month changes in numbers employed are difficult to reconcile with what is known of developments in industry, commerce or government employment. For this reason an investigation is being undertaken of methods and procedures used in producing the estimates.

Reliability of the estimates

33. Since the estimates in this section are based on information obtained from occupants of a sample of dwellings they are subject to sampling variability; that is, they may differ from the figures that would have been produced if all dwellings had been included in the survey. An indication of the likely differences is given in the technical note, page 28.

Differences between population census and population survey estimates

34. The results of the 1976 population census show that labour force figures derived from the census differ from estimates derived from the population surveys of May and August 1976.

35. The labour force definition used in the population census is similar to that used in the survey. (See paragraphs 6 to 19.) However, evidence from census post-enumeration surveys indicates that the personal interview approach, as used in the population survey, tends to identify a larger number of persons as being in the labour force than does the filling in of the questions on the census schedule by the householder. In addition, the post-enumeration survey following the 1976 census showed an under-enumeration of the population of 2.71 per cent. It has not been possible to adjust the published census labour force figures for any under-enumeration.

36. In the 1971 and 1976 censuses the minor occupation group 'Architects, engineers, surveyors, professional' was limited solely to persons holding a university degree. Other persons describing themselves in professional terms but not holding a degree were classified to minor group 'Draftsmen and technicians, n.e.c.'. Information to enable this distinction to be made in the labour force survey is not available.

37. These considerations should be borne in mind if comparisons are made between census and labour force survey estimates.

Seasonal adjustment

38. The move to the higher level of unemployment since 1974 appears to have been accompanied by shifts in the pattern of seasonal variation. For this reason the publication of seasonally adjusted figures of unemployment was suspended as from November 1977. The matter will be kept under review.

39. Seasonally adjusted quarterly estimates of employed persons, the labour force and labour force participation rates are published in the February, May, August and November issues. The seasonally adjusted figures are revised annually. A table of the latest revised seasonally adjusted estimates was published in the November 1980 issue. Estimates for earlier periods are published in *Seasonally Adjusted Indicators, Australia 1980* (1308.0) which also contains information on seasonal adjustment methods, etc. Calculation of seasonally adjusted monthly figures is not yet possible.

Additional tables

40. Labour force estimates for employed persons classified by industry and occupation and for seasonally adjusted series, are available only each quarter. Estimates relating to these characteristics are included in only some issues of this publication, as shown below.

February, May, August and November—

Average weekly hours worked: Industry and occupation

Employed persons: Occupational status of full-time and part-time workers

Employed married females: Industry and hours worked

Seasonally adjusted series.

The following estimates are available for February, May, August and November but are published only for the months shown.

February—

Employed persons—

Industry and marital status

Industry and birthplace

Occupation and marital status

Occupation and birthplace

May—

Employed persons: Occupation—major and minor groups

Employed persons: Hours worked, by industry

August—

Employed persons: Industry by occupation

November—

Employed persons—

Industry by full-time and part-time status

Occupation by full-time and part-time status

Industry by age.

Other unpublished data from labour force surveys may be available on request.

Related publications

41. Users may also wish to refer to the following publications which are available on request:

Unemployment, Australia (Preliminary Estimates) (6201.0)—issued monthly

The Labour Force, Australia (Preliminary) (6202.0)—issued monthly

The Labour Force, Australia, 1979 (6204.0)

Unemployment, Underemployment and Related Statistics, Australia, February 1978 to February 1980 (6236.0)

The Labour Force, New South Wales (6201.1)—issued quarterly

The Labour Force, Victoria (6201.2)—issued monthly

The Labour Force, Queensland (6201.3)—issued quarterly

The Labour Force, South Australia (6201.4)—issued quarterly

Information Paper: Questionnaires used in the Labour Force Survey (6232.0)

Civilian Employees, Australia (6213.0)—issued monthly

Job Vacancies, Australia (6231.0)—issued quarterly

Overtime, Australia (6330.0)—issued monthly

Other relevant publications are listed on pages 30 and 31.

42. Current publications produced by the ABS are listed in the *Catalogue of Publications, Australia* (1101.0) which is available free of charge from any ABS office.

Symbols and other usages

* subject to sampling variability too high for most practical uses. See paragraph 6, page 28

n.a. not available

.. not applicable

n.e.c. not elsewhere classified

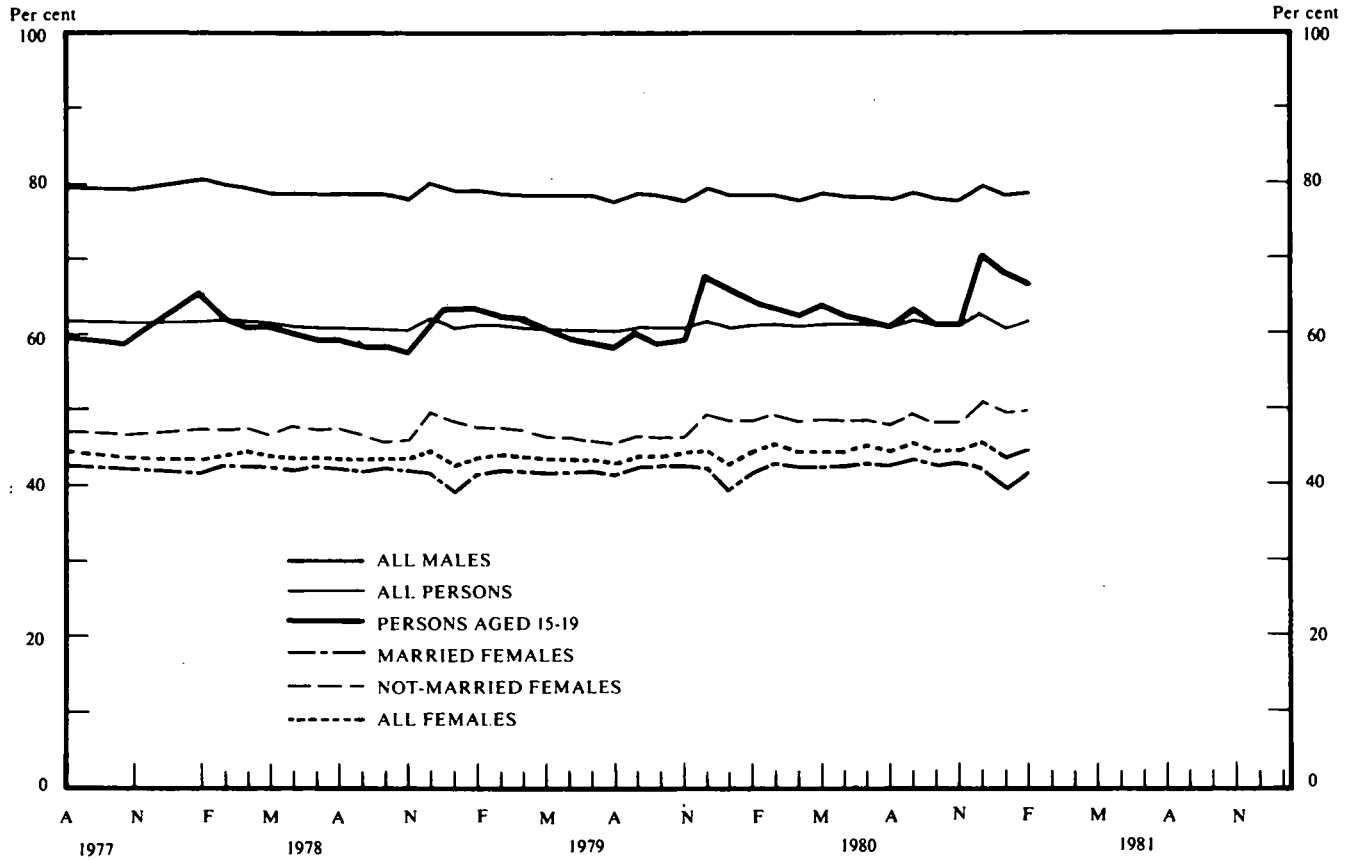
— nil or rounded to zero.

43. Figures have been rounded and discrepancies may occur between sums of the component items and totals.

R. J. CAMERON
Australian Statistician

LABOUR FORCE PARTICIPATION RATES

(THE LABOUR FORCE IN EACH GROUP AS A PERCENTAGE OF THE CIVILIAN POPULATION AGED 15 YEARS AND OVER IN THE SAME GROUP)



NOTE. From February 1978 the population survey has been conducted monthly. Previously, surveys were conducted in February, May, August and November each year.

UNEMPLOYMENT RATES

(THE UNEMPLOYED IN EACH GROUP AS A PERCENTAGE OF THE CIVILIAN LABOUR FORCE IN THE SAME GROUP)

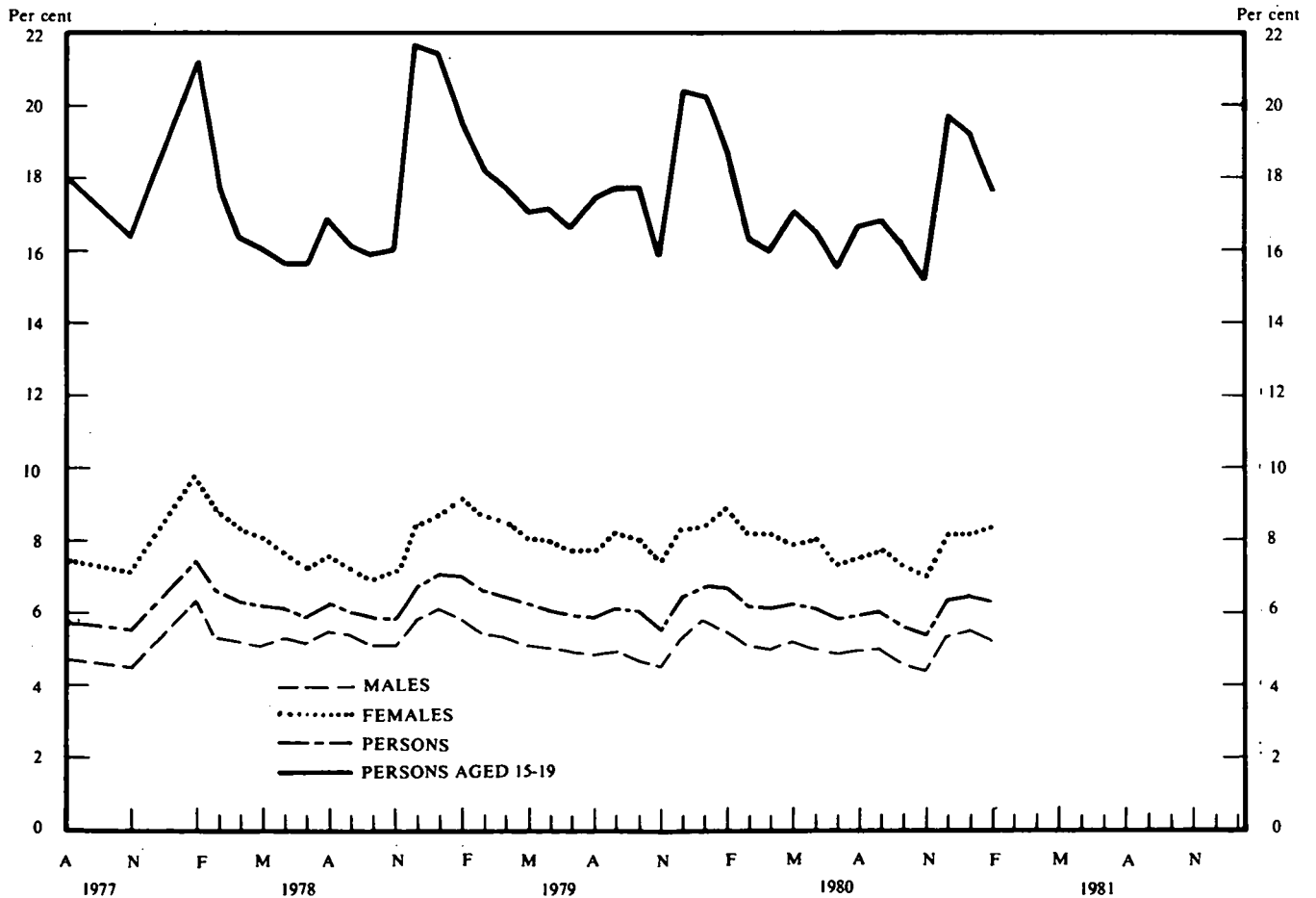


TABLE 1. CIVILIAN POPULATION AGED 15 YEARS AND OVER, BY EMPLOYMENT STATUS(a)

Month	Unemployed									
	Employed	Looking for full-time work				Labour force	Not in labour force	Civilian population aged 15 years and over	Unemployment rate	Participation rate
		Aged 15-19 years looking for first job	Total	Looking for part-time work	Total					
		— '000 —								
MALES										
1980—										
January	3,937.6	41.2	226.9	15.4	242.3	4,179.9	1,132.1	5,312.0	5.8	78.7
February	3,960.1	32.5	215.2	15.3	230.4	4,190.6	1,129.9	5,320.5	5.5	78.8
March	3,971.1	24.1	196.3	15.2	211.5	4,182.6	1,145.4	5,328.0	5.1	78.5
April	3,949.6	16.3	192.9	14.1	206.9	4,156.6	1,178.5	5,335.1	5.0	77.9
May	3,981.2	18.7	201.0	18.9	219.9	4,201.1	1,140.6	5,341.6	5.2	78.6
June	3,970.3	19.8	193.1	15.8	208.9	4,179.2	1,169.8	5,348.9	5.0	78.1
July	3,984.2	17.1	190.0	15.4	205.3	4,189.5	1,168.5	5,358.0	4.9	78.2
August	3,970.9	20.0	193.3	15.8	209.1	4,180.0	1,184.3	5,364.2	5.0	77.9
September	4,010.0	24.9	197.9	13.2	211.1	4,221.1	1,151.0	5,372.1	5.0	78.6
October	4,000.8	21.7	180.1	14.7	194.8	4,195.6	1,184.8	5,380.4	4.6	78.0
November	4,006.7	22.4	171.4	11.5	182.8	4,189.6	1,202.5	5,392.1	4.4	77.7
December	4,080.4	43.2	206.1	20.1	226.2	4,306.7	1,096.7	5,403.3	5.3	79.7
1981—										
January	4,017.7	34.4	218.2	15.7	233.9	4,251.6	1,161.4	5,413.0	5.5	78.5
February	4,051.4	29.8	203.6	16.4	220.0	4,271.4	1,149.2	5,420.6	5.2	78.8
Standard error of—										
February 1981 estimates	14.0	2.4	5.2	1.8	5.3	14.2	9.5	..	0.1	0.3
January 1981 to February 1981 movement	9.8	2.4	4.4	1.8	4.5	9.9	7.1	..	0.1	0.2
MARRIED FEMALES										
1980—										
January	1,318.2	*	38.1	25.3	63.4	1,381.6	2,102.7	3,484.3	4.6	39.7
February	1,370.7	*	48.2	36.4	84.6	1,455.3	2,006.5	3,461.9	5.8	42.0
March	1,402.3	*	46.1	36.6	82.7	1,484.9	1,971.8	3,456.7	5.6	43.0
April	1,392.1	*	43.2	32.7	75.9	1,467.9	1,997.5	3,465.4	5.2	42.4
May	1,394.7	*	39.5	34.1	73.6	1,468.2	1,992.9	3,461.1	5.0	42.4
June	1,400.0	*	42.8	35.4	78.1	1,478.2	1,987.1	3,465.3	5.3	42.7
July	1,412.7	*	40.9	29.4	70.3	1,483.0	1,968.1	3,451.2	4.7	43.0
August	1,412.4	*	42.2	27.6	69.7	1,482.1	1,982.7	3,464.8	4.7	42.8
September	1,419.8	*	45.0	33.9	78.9	1,498.7	1,962.1	3,460.8	5.3	43.3
October	1,407.5	*	39.5	34.7	74.2	1,481.7	2,000.1	3,481.8	5.0	42.6
November	1,419.5	*	42.1	28.4	70.5	1,490.0	1,992.9	3,483.0	4.7	42.8
December	1,402.9	*	37.6	30.8	68.4	1,471.3	2,017.1	3,488.4	4.7	42.2
1981—										
January	1,320.9	*	39.5	23.0	62.5	1,383.4	2,121.7	3,505.1	4.5	39.5
February	1,374.5	*	46.8	32.9	79.8	1,454.2	2,056.7	3,510.9	5.5	41.4
Standard error of—										
February 1981 estimates	10.1	..	2.9	2.5	3.6	10.2	11.4	..	0.2	0.3
January 1981 to February 1981 movement	7.5	..	2.7	2.4	3.2	7.6	8.3	..	0.2	0.2

For footnote see page 9.

TABLE 1. CIVILIAN POPULATION AGED 15 YEARS AND OVER, BY EMPLOYMENT STATUS(a)—continued

Month	Unemployed									
	Employed	Looking for full-time work		Looking for part-time work		Labour force	Not in labour force	Civilian population aged 15 years and over	Unemployment rate	Participation rate
		Aged 15-19 years looking for first job	Total	Total	Total					
— '000 —										
ALL FEMALES										
1980—										
January	2,141.5	48.4	154.1	41.4	195.5	2,337.0	3,109.3	5,446.3	8.4	42.9
February	2,213.9	40.0	160.5	53.5	214.1	2,428.0	3,026.9	5,454.9	8.8	44.5
March	2,272.1	31.5	142.8	58.1	200.9	2,473.0	2,989.2	5,462.2	8.1	45.3
April	2,242.4	28.5	146.3	51.3	197.5	2,440.0	3,030.6	5,470.6	8.1	44.6
May	2,256.6	29.8	141.6	52.1	193.7	2,450.3	3,027.2	5,477.5	7.9	44.7
June	2,262.4	26.6	144.7	52.5	197.1	2,459.6	3,025.9	5,485.5	8.0	44.8
July	2,295.8	25.6	134.8	45.2	180.0	2,475.9	3,017.8	5,493.7	7.3	45.1
August	2,275.8	26.5	139.4	43.8	183.2	2,459.0	3,041.4	5,500.4	7.5	44.7
September	2,315.3	23.6	137.6	56.8	194.4	2,509.7	2,999.2	5,508.9	7.7	45.6
October	2,285.2	24.1	127.0	53.9	180.9	2,466.1	3,050.6	5,516.7	7.3	44.7
November	2,301.8	21.1	131.3	42.8	174.1	2,476.0	3,052.4	5,528.4	7.0	44.8
December	2,309.1	39.2	151.2	54.5	205.8	2,514.9	3,023.0	5,537.9	8.2	45.4
1981—										
January	2,201.3	43.0	158.7	37.7	196.5	2,397.8	3,151.8	5,549.5	8.2	43.2
February	2,269.3	33.4	154.7	49.4	204.1	2,473.4	3,084.7	5,558.2	8.3	44.5
Standard error of—										
February 1981 estimates	11.8	2.5	4.6	2.9	5.2	12.1	12.9	..	0.2	0.2
January 1981 to February 1981 movement	8.5	2.6	4.0	2.7	4.3	8.7	9.2	..	0.2	0.2
PERSONS										
1980—										
January	6,079.1	89.7	380.9	56.9	437.8	6,516.9	4,241.4	10,758.3	6.7	60.6
February	6,174.1	72.5	375.7	68.8	444.5	6,618.6	4,156.8	10,775.4	6.7	61.4
March	6,243.2	55.6	339.1	73.3	412.4	6,655.6	4,134.6	10,790.2	6.2	61.7
April	6,192.1	44.7	339.1	65.3	404.5	6,596.5	4,209.1	10,805.7	6.1	61.0
May	6,237.8	48.4	342.6	71.0	413.6	6,651.4	4,167.7	10,819.1	6.2	61.5
June	6,232.7	46.4	337.7	68.3	406.0	6,638.8	4,195.7	10,834.4	6.1	61.3
July	6,280.0	42.7	324.8	60.6	385.4	6,665.4	4,186.3	10,851.7	5.8	61.4
August	6,246.7	46.5	332.6	59.7	392.3	6,639.0	4,225.7	10,864.7	5.9	61.1
September	6,325.3	48.6	335.5	70.0	405.5	6,730.8	4,150.2	10,881.0	6.0	61.9
October	6,286.0	45.9	307.1	68.6	375.7	6,661.7	4,235.4	10,897.1	5.6	61.1
November	6,308.5	43.5	302.7	54.3	357.0	6,665.5	4,254.9	10,920.5	5.4	61.0
December	6,389.5	82.3	357.4	74.6	432.0	6,821.5	4,119.7	10,941.2	6.3	62.3
1981—										
January	6,219.1	77.4	377.0	53.4	430.4	6,649.4	4,313.2	10,962.6	6.5	60.7
February	6,320.7	63.2	358.4	65.8	424.1	6,744.8	4,233.9	10,978.8	6.3	61.4
Standard error of—										
February 1981 estimates	15.8	3.2	6.4	3.3	6.8	16.1	14.1	..	0.1	0.1
January 1981 to February 1981 movement	10.8	3.2	5.2	3.0	5.4	11.0	9.9	..	0.1	0.1

(a) For information on standard errors see technical note, page 28.

TABLE 2. CIVILIAN POPULATION AGED 15 YEARS AND OVER, BY EMPLOYMENT STATUS AND MARITAL STATUS, FEBRUARY 1981

	Employed	Unemployed		Total	Labour force	Not in labour force	Civilian population aged 15 years and over	Unemployment rate	Participation rate
		Looking for full-time work	Looking for part-time work						
— '000 —									
— per cent —									
Males—									
Married	2,765.8	73.7	*	76.0	2,841.7	663.6	3,505.3	2.7	81.1
Not married(a)	1,285.6	130.0	14.1	144.1	1,429.7	485.7	1,915.3	10.1	74.6
Total	4,051.4	203.6	16.4	220.0	4,271.4	1,149.2	5,420.6	5.2	78.8
Females—									
Married	1,374.5	46.8	32.9	79.8	1,454.2	2,056.7	3,510.9	5.5	41.4
Not married(a)	894.9	107.9	16.4	124.3	1,019.2	1,028.0	2,047.2	12.2	49.8
Total	2,269.3	154.7	49.4	204.1	2,473.4	3,084.7	5,558.2	8.3	44.5
Persons	6,320.7	358.4	65.8	424.1	6,744.8	4,233.9	10,978.8	6.3	61.4

(a) Comprises never married, widowed and divorced.

TABLE 3. CIVILIAN POPULATION AGED 15 YEARS AND OVER, BY EMPLOYMENT STATUS, STATES AND TERRITORIES, FEBRUARY 1981

State or Territory	Employed	Unemployed		Total	Labour force	Not in labour force	Civilian population aged 15 years and over	Unemployment rate	Participation rate
		Looking for full-time work	Looking for part-time work						
— '000 —									
— per cent —									
MALES									
N.S.W.	1,422.6	65.3	5.5	70.8	1,493.4	413.7	1,907.2	4.7	78.3
Vic.	1,078.9	53.1	*	57.2	1,136.1	294.7	1,430.8	5.0	79.4
Qld.	614.8	30.4	*	33.2	648.0	199.1	847.0	5.1	76.5
S.A.	356.3	23.8	*	25.4	381.6	107.3	488.9	6.6	78.1
W.A.	366.8	19.3	*	20.3	387.1	86.3	473.4	5.3	81.8
Tas.	115.9	6.6	*	6.8	122.7	32.2	155.0	5.6	79.2
N.T.	36.2	*	*	*	37.6	4.9	42.5	*	88.5
A.C.T.	59.8	3.7	*	5.0	64.8	11.1	75.9	7.7	85.4
Australia	4,051.4	203.6	16.4	220.0	4,271.4	1,149.2	5,420.6	5.2	78.8
FEMALES									
N.S.W.	792.9	50.8	14.7	65.5	858.4	1,111.2	1,969.5	7.6	43.6
Vic.	626.9	42.8	15.8	58.6	685.5	795.4	1,480.9	8.6	46.3
Qld.	330.3	24.2	6.9	31.1	361.4	500.8	862.3	8.6	41.9
S.A.	204.0	16.3	4.7	20.9	224.9	278.9	503.8	9.3	44.6
W.A.	194.5	13.1	4.2	17.3	211.8	254.6	466.3	8.2	45.4
Tas.	61.0	4.6	*	5.9	66.9	92.5	159.4	8.8	42.0
N.T.	19.6	*	*	*	20.1	15.8	36.0	*	56.0
A.C.T.	40.4	2.4	*	4.1	44.5	35.4	79.9	9.2	55.7
Australia	2,269.3	154.7	49.4	204.1	2,473.4	3,084.7	5,558.2	8.3	44.5
PERSONS									
N.S.W.	2,215.5	116.1	20.2	136.3	2,351.8	1,524.9	3,876.7	5.8	60.7
Vic.	1,705.8	95.9	19.9	115.8	1,821.6	1,090.1	2,911.8	6.4	62.6
Qld.	945.1	54.7	9.6	64.3	1,009.4	699.9	1,709.3	6.4	59.1
S.A.	560.2	40.1	6.2	46.3	606.5	386.2	992.7	7.6	61.1
W.A.	561.3	32.4	5.3	37.6	598.9	340.8	939.7	6.3	63.7
Tas.	176.9	11.3	1.5	12.8	189.6	124.8	314.4	6.7	60.3
N.T.	55.8	*	*	*	57.7	20.7	78.4	*	73.6
A.C.T.	100.2	6.1	3.0	9.1	109.3	46.5	155.8	8.3	70.2
Australia	6,320.7	358.4	65.8	424.1	6,744.8	4,233.9	10,978.8	6.3	61.4

TABLE 4. CIVILIAN POPULATION AGED 15 YEARS AND OVER, BY EMPLOYMENT STATUS, STATE CAPITAL CITIES, FEBRUARY 1981

Capital city	Employed	Unemployed		Total	Labour force	Not in labour force	Civilian population aged 15 years and over	Unemployment rate	Participation rate
		Looking for full-time work	Looking for part-time work						
— '000 —									
— per cent —									
MALES									
Sydney	894.4	42.7	*	46.2	940.6	258.8	1,199.3	4.9	78.4
Melbourne	768.0	41.9	*	45.1	813.0	208.1	1,021.1	5.5	79.6
Brisbane	282.0	12.4	*	14.0	295.9	88.0	383.9	4.7	77.1
Adelaide	249.9	18.7	*	20.0	269.9	81.7	351.6	7.4	76.8
Perth	247.2	16.7	*	17.6	264.8	64.5	329.3	6.6	80.4
Hobart	45.9	2.7	*	2.8	48.7	14.2	62.9	5.8	77.4
Total	2,487.3	135.1	10.6	145.7	2,632.9	715.3	3,348.2	5.5	78.6
FEMALES									
Sydney	543.0	27.2	9.7	36.9	579.9	692.3	1,272.1	6.4	45.6
Melbourne	468.7	30.2	13.2	43.4	512.1	558.7	1,070.8	8.5	47.8
Brisbane	159.1	13.0	*	15.7	174.8	237.6	412.4	9.0	42.4
Adelaide	154.0	13.0	2.8	15.8	169.8	204.7	374.4	9.3	45.3
Perth	148.4	10.0	3.2	13.2	161.6	185.8	347.4	8.2	46.5
Hobart	27.9	2.2	*	2.8	30.7	35.8	66.6	9.1	46.2
Total	1,501.2	95.5	32.2	127.8	1,628.9	1,914.9	3,543.8	7.8	46.0
PERSONS									
Sydney	1,437.3	69.9	13.2	83.1	1,520.4	951.0	2,471.5	5.5	61.5
Melbourne	1,236.7	72.1	16.4	88.5	1,325.1	766.8	2,091.9	6.7	63.3
Brisbane	441.1	25.4	4.3	29.7	470.7	325.6	796.3	6.3	59.1
Adelaide	403.9	31.7	4.1	35.8	439.7	286.4	726.1	8.1	60.6
Perth	395.6	26.7	4.1	30.8	426.4	250.3	676.7	7.2	63.0
Hobart	73.8	4.9	*	5.6	79.4	50.1	129.5	7.1	61.3
Total	3,988.4	230.6	42.8	273.4	4,261.8	2,630.2	6,892.0	6.4	61.8

TABLE 5. CIVILIAN POPULATION AGED 15 YEARS AND OVER BY EMPLOYMENT STATUS: AUSTRALIAN CAPITAL TERRITORY, FEBRUARY 1981

	Persons							
	Males	Females		Total	Total	Aged 15-19 years	Aged 20-24 years	Aged 25 years and over
		Married	Total					
— '000 —								
Employed	59.8	25.9	40.4	100.2	8.9	14.6	76.7	
Full-time workers	56.6	16.6	27.6	84.3	5.3	13.4	65.6	
Part-time workers	3.2	9.3	12.7	15.9	3.5	*	11.1	
Unemployed	5.0	*	4.1	9.1	3.8	*	4.5	
Looking for full-time work	3.7	*	2.4	6.1	2.3	*	3.3	
Looking for part-time work	*	*	*	3.0	*	*	*	
Labour force	64.8	27.7	44.5	109.3	12.6	15.5	81.1	
Not in the labour force	11.1	25.2	35.4	46.5	7.2	3.6	35.7	
Aged 15-20 years attending school	3.0	*	3.0	6.0	
Civilian population	75.9	52.8	79.9	155.8	19.9	19.1	116.8	
— per cent —								
Unemployment rate	7.7	*	9.2	8.3	29.7	*	5.5	
Persons looking for full-time work	6.1	*	8.0	6.7	29.7	*	4.8	
Participation rate	85.4	52.3	55.7	70.2	63.6	81.2	69.5	
Employment/population ratio	78.8	49.0	50.5	64.3	44.7	76.5	65.6	
— number —								
Average weekly hours worked by employed persons(a)	39.5	30.6	30.5	35.9	n.a.	n.a.	n.a.	
Average duration of unemployment (weeks)	25.6	*	27.7	26.6	27.6	*	28.2	

(a) Figures of hours relate to average weekly hours worked, not hours paid for. See explanatory notes, paragraph 17.

TABLE 6. CIVILIAN POPULATION AGED 15 TO 19 YEARS, BY EMPLOYMENT STATUS AND WHETHER ATTENDING SCHOOL, FEBRUARY 1981(a)

	Unemployed			Total	Labour force	Not in labour force	Civilian population	Unemployment rate	Participation rate
	Employed	Looking for full-time work	Looking for part-time work						
— '000 —									
NOT ATTENDING SCHOOL									
Males	348.5	55.3	*	59.4	407.9	42.0	449.8	14.6	90.7
Females	277.9	63.4	4.6	68.1	345.9	78.5	424.5	19.7	81.5
Persons	626.4	118.7	8.7	127.4	753.8	120.5	874.3	16.9	86.2
Left school—									
Before 1979	281.7	44.8	} 5.5 {	47.1	328.7	44.1	372.8	14.3	88.2
1979	198.6	28.4		31.7	230.3	28.7	259.0	13.8	88.9
1980 to survey date	146.1	45.5	*	48.7	194.8	47.8	242.5	25.0	80.3
Nov. or Dec. 1980	109.9	35.7	*	38.6	148.5	43.0	191.5	26.0	77.6
Age (years)—									
15	24.7	8.7	*	9.3	34.0	7.5	41.4	27.3	82.0
16	85.6	23.8	*	25.0	110.6	11.5	122.0	22.6	90.6
17	141.6	29.0	*	31.1	172.7	26.7	199.4	18.0	86.6
18	182.6	31.0	} 4.8 {	34.1	216.6	35.0	251.7	15.7	86.1
19	192.0	26.2		27.9	219.9	39.9	259.8	12.7	84.7
ATTENDING SCHOOL									
Males	32.4	4.9	6.3	11.2	43.6	159.1	202.7	25.7	21.5
Females	40.0	*	6.8	10.3	50.3	150.0	200.3	20.5	25.1
Persons	72.3	8.4	13.1	21.5	93.9	309.1	403.0	22.9	23.3
Age (years)—									
15	31.0	} 6.7 {	7.0	10.1	41.1	163.8	204.9	24.6	20.1
16	26.7		7.7	34.4	94.5	129.0	22.5	26.7	
17	12.0	*	} 5.6 {	*	14.7	43.2	57.9	*	25.3
18 and 19	*	*		*	*	*	7.6	11.3	*
TOTAL									
Males	380.9	60.2	10.4	70.6	451.5	201.1	652.6	15.6	69.2
Females	317.8	66.9	11.4	78.4	396.2	228.5	624.7	19.8	63.4
Persons	698.7	127.2	21.8	149.0	847.7	429.6	1,277.3	17.6	66.4
Age (years)—									
15	55.7	11.9	7.5	19.4	75.1	171.2	246.3	25.8	30.5
16	112.3	27.4	5.4	32.8	145.0	106.0	251.0	22.6	57.8
17	153.5	30.3	} 6.9 {	33.8	187.3	69.9	257.3	18.1	72.8
18	184.3	31.5		34.8	219.2	41.0	260.2	15.9	84.2
19	192.8	26.2	*	28.2	221.0	41.5	262.5	12.7	84.2

(a) For information on duration of unemployment, see Table 31.

TABLE 7. CIVILIAN POPULATION AGED 20 TO 24 YEARS, BY EMPLOYMENT STATUS, FEBRUARY 1981

	Unemployed			Total	Labour force	Not in labour force	Civilian population	Unemployment rate	Participation rate
	Employed	Looking for full-time work	Looking for part-time work						
— '000 —									
— per cent —									
Males	540.0	48.6	*	50.4	590.4	41.4	631.8	8.5	93.4
Females	397.0	33.3	7.6	40.9	437.9	184.9	622.9	9.3	70.3
Persons	937.0	81.8	9.5	91.3	1,028.3	226.4	1,254.7	8.9	82.0
Age (years)—									
20	196.5	21.5	} 5.2 {	23.5	220.0	40.2	260.2	10.7	84.6
21	194.3	20.7		21.1	215.5	40.0	255.4	9.8	84.4
22	187.6	16.8	*	19.5	207.1	45.9	253.0	9.4	81.9
23	188.7	12.9	*	14.8	203.5	42.7	246.2	7.3	82.6
24	169.9	10.0	*	12.4	182.3	57.6	239.9	6.8	76.0

TABLE 8. SEASONALLY ADJUSTED SERIES(a)

Month	Males		Married females		All females		Persons	
	Original	Seasonally adjusted	Original	Seasonally adjusted	Original	Seasonally adjusted	Original	Seasonally adjusted
EMPLOYED (' 000)								
1976—August(b)	3,836.3	3,850.3	1,337.8	1,341.1	2,061.5	2,071.5	5,897.8	5,926.7
November	3,866.0	3,871.8	1,361.6	1,344.4	2,089.0	2,070.8	5,955.0	5,942.7
1977—February	3,890.2	3,883.1	1,355.5	1,370.5	2,095.1	2,107.0	5,985.2	5,987.5
May	3,891.5	3,878.7	1,382.0	1,381.2	2,132.7	2,129.1	6,024.2	6,005.7
August	3,866.8	3,880.7	1,374.5	1,376.3	2,128.6	2,137.3	5,995.4	6,022.4
November	3,867.3	3,873.5	1,368.9	1,353.3	2,128.2	2,111.2	5,995.4	5,984.9
1978—February(c)	3,857.4	3,849.9	1,320.9	1,336.0	2,074.8	2,087.7	5,932.3	5,934.7
May	3,863.5	3,851.3	1,356.5	1,355.5	2,135.3	2,131.3	5,998.7	5,981.8
August	3,832.3	3,845.5	1,357.7	1,357.8	2,137.2	2,144.0	5,969.6	5,993.0
November	3,846.1	3,852.6	1,373.4	1,359.1	2,151.2	2,135.1	5,997.3	5,988.2
1979—February	3,893.6	3,886.0	1,346.1	1,362.1	2,125.4	2,139.3	6,018.9	6,021.6
May	3,908.3	3,896.2	1,356.3	1,355.1	2,135.0	2,131.1	6,043.3	6,027.8
August	3,904.5	3,917.5	1,347.2	1,346.0	2,136.9	2,142.2	6,041.5	6,062.2
November	3,931.2	3,937.8	1,408.5	1,394.4	2,219.4	2,203.4	6,150.6	6,142.3
1980—February	3,960.1	3,952.7	1,370.7	1,387.6	2,213.9	2,228.7	6,174.1	6,177.1
May	3,981.2	3,968.9	1,394.7	1,393.2	2,256.6	2,252.6	6,237.8	6,222.7
August	3,970.9	3,984.0	1,412.4	1,410.7	2,275.8	2,281.0	6,246.7	6,266.6
November	4,006.7	4,013.4	1,419.5	1,405.6	2,301.8	2,285.6	6,308.5	6,300.6
1981—February	4,051.4	4,044.0	1,374.5	1,391.8	2,269.3	2,284.7	6,320.7	6,323.9
LABOUR FORCE (' 000)								
1976—August(b)	3,992.9	4,015.7	1,400.9	1,406.5	2,197.6	2,217.3	6,190.5	6,231.8
November	4,021.2	4,035.9	1,412.9	1,404.1	2,215.3	2,210.5	6,236.5	6,246.8
1977—February	4,076.2	4,046.6	1,438.3	1,440.9	2,281.3	2,267.1	6,357.5	6,313.7
May	4,076.2	4,067.4	1,456.6	1,457.3	2,301.8	2,300.4	6,378.0	6,367.9
August	4,056.9	4,079.7	1,451.2	1,454.9	2,297.8	2,315.5	6,354.7	6,394.3
November	4,050.4	4,067.6	1,436.6	1,430.2	2,291.9	2,290.8	6,342.2	6,359.8
1978—February(c)	4,112.4	4,081.1	1,413.6	1,417.0	2,296.9	2,283.8	6,409.3	6,364.3
May	4,072.6	4,063.9	1,440.4	1,439.9	2,321.4	2,318.3	6,394.0	6,381.8
August	4,053.8	4,075.4	1,434.9	1,436.9	2,311.5	2,327.0	6,365.3	6,401.7
November	4,052.4	4,071.7	1,436.8	1,431.9	2,314.6	2,315.5	6,367.0	6,389.4
1979—February	4,135.4	4,103.0	1,431.8	1,436.2	2,337.5	2,325.6	6,472.9	6,427.5
May	4,118.9	4,110.3	1,428.5	1,427.1	2,321.0	2,316.7	6,439.9	6,426.5
August	4,100.7	4,121.7	1,420.8	1,421.8	2,314.6	2,328.9	6,415.3	6,449.6
November	4,115.0	4,135.8	1,485.0	1,480.7	2,396.2	2,398.0	6,511.2	6,537.1
1980—February	4,190.6	4,157.1	1,455.3	1,460.6	2,428.0	2,416.4	6,618.6	6,571.5
May	4,201.1	4,192.8	1,468.2	1,466.0	2,450.3	2,445.1	6,651.4	6,637.5
August	4,180.0	4,200.8	1,482.1	1,483.0	2,459.0	2,474.1	6,639.0	6,673.9
November	4,189.6	4,211.4	1,490.0	1,486.1	2,476.0	2,478.4	6,665.5	6,693.5
1981—February	4,271.4	4,236.8	1,454.2	1,459.9	2,473.4	2,461.9	6,744.8	6,696.6
PARTICIPATION RATE (per cent)								
1976—August(b)	80.0	80.4	41.5	41.6	43.0	43.4	61.3	61.7
November	80.2	80.5	41.8	41.5	43.2	43.1	61.5	61.6
1977—February	80.9	80.3	42.3	42.4	44.3	44.0	62.4	61.9
May	80.5	80.4	42.8	42.8	44.4	44.4	62.3	62.2
August	79.8	80.2	42.6	42.7	44.2	44.5	61.8	62.2
November	79.3	79.7	42.3	42.0	43.8	43.8	61.4	61.5
1978—February(c)	80.1	79.5	41.5	41.6	43.7	43.4	61.7	61.2
May	78.9	78.8	42.4	42.4	43.9	43.9	61.2	61.1
August	78.3	78.6	42.1	42.1	43.5	43.8	60.7	61.0
November	77.9	78.3	42.0	41.8	43.4	43.4	60.5	60.7
1979—February	79.1	78.5	41.4	41.6	43.6	43.4	61.2	60.7
May	78.4	78.3	41.2	41.2	43.1	43.1	60.6	60.5
August	77.8	78.2	41.3	41.3	42.9	43.1	60.1	60.4
November	77.8	78.2	42.8	42.6	44.2	44.2	60.7	61.0
1980—February	78.8	78.1	42.0	42.3	44.5	44.3	61.4	61.0
May	78.6	78.5	42.4	42.4	44.7	44.7	61.5	61.4
August	77.9	78.3	42.8	42.8	44.7	45.0	61.1	61.4
November	77.7	78.1	42.8	42.6	44.8	44.8	61.0	61.3
1981—February	78.8	78.2	41.4	41.7	44.5	44.3	61.4	61.0

(a) The methods used to seasonally adjust these figures are explained in *Seasonally Adjusted Indicators, Australia, 1980* (1308.0). See also paragraphs 38 and 39. (b) Affected by industrial disputes. (c) First of monthly series. For information on the change in timing of the survey see paragraph 29.

TABLE 9. CIVILIAN LABOUR FORCE, BY EMPLOYMENT STATUS AND BIRTHPLACE, FEBRUARY 1981

	Employed		Unemployed		Labour force	Unemployment rate	Participation rate(a)
	Full-time	Total	Looking for full-time work	Total			
	— '000 —					— per cent —	
MALES							
Born in Australia	2,823.3	2,978.1	145.4	157.6	3,135.7	5.0	79.5
Born outside Australia	1,032.5	1,073.3	58.2	62.4	1,135.7	5.5	79.8
Africa	24.1	25.4	*	*	26.9	*	80.1
America	26.9	28.2	*	*	30.2	*	81.9
Asia	101.5	106.3	10.1	10.6	117.0	9.1	79.9
Lebanon	13.5	13.8	*	*	16.2	*	79.3
Europe	819.7	850.4	42.4	45.4	895.8	5.1	79.2
Germany, Fed. Rep.	38.6	40.4	*	*	41.6	*	82.2
Greece	57.1	59.0	*	*	63.3	*	80.0
Italy	116.3	119.1	*	*	122.7	*	81.8
Malta	28.3	28.9	*	*	30.3	*	82.6
Netherlands	39.2	40.5	*	*	42.1	*	83.1
Poland	17.7	19.0	*	*	20.1	*	65.9
U.K. and Ireland	384.9	403.3	19.9	22.2	425.4	5.2	78.5
Yugoslavia	61.9	62.4	*	*	66.6	*	84.7
Oceania	60.2	62.6	*	*	65.6	*	87.5
New Zealand	53.8	55.5	*	*	58.0	*	88.8
MARRIED FEMALES							
Born in Australia	523.8	983.1	24.5	48.2	1,031.3	4.7	40.3
Born outside Australia	253.2	391.4	22.3	31.5	423.0	7.5	45.1
Africa	9.1	11.7	*	*	12.8	*	53.8
America	10.0	12.6	*	*	13.6	*	53.3
Asia	30.0	41.2	4.5	5.2	46.4	11.2	47.8
Lebanon	*	4.6	*	*	5.7	*	40.0
Europe	191.1	306.4	15.2	21.7	328.1	6.6	43.9
Germany, Fed. Rep.	8.9	16.3	*	*	16.8	*	44.2
Greece	20.7	28.9	*	*	31.0	*	50.1
Italy	26.4	36.7	*	*	38.7	*	38.1
Malta	*	5.4	*	*	6.5	*	29.6
Netherlands	*	10.4	*	*	11.0	*	33.5
Poland	5.8	7.4	*	*	8.0	*	43.1
U.K. and Ireland	82.4	146.4	7.5	11.0	157.4	7.0	44.0
Yugoslavia	22.7	27.8	*	*	30.5	*	58.8
Oceania	13.0	19.5	*	*	22.0	*	49.7
New Zealand	12.0	17.8	*	*	19.4	*	52.2
ALL FEMALES							
Born in Australia	1,110.9	1,727.5	113.2	150.9	1,878.3	8.0	45.1
Born outside Australia	374.2	541.9	41.5	53.2	595.1	8.9	45.8
Africa	13.5	16.4	*	*	18.0	*	53.6
America	12.8	16.7	*	*	18.4	*	53.7
Asia	45.1	59.2	6.9	7.7	66.9	11.5	48.7
Lebanon	5.4	6.8	*	*	9.0	*	46.9
Europe	275.3	411.6	29.0	36.8	448.4	8.2	44.0
Germany, Fed. Rep.	12.1	20.1	*	*	21.3	*	44.1
Greece	23.2	31.9	*	*	34.9	*	47.6
Italy	33.0	43.7	*	*	46.8	*	37.8
Malta	5.6	7.9	*	*	9.2	*	34.4
Netherlands	5.3	13.1	*	*	13.7	*	34.0
Poland	8.0	10.2	*	*	11.2	*	41.1
U.K. and Ireland	137.5	216.1	16.7	21.0	237.1	8.9	45.2
Yugoslavia	27.2	32.9	*	*	36.0	*	56.0
Oceania	27.5	38.0	*	5.3	43.3	12.2	58.4
New Zealand	23.8	33.0	*	*	36.9	*	60.2
PERSONS							
Born in Australia	3,934.2	4,705.6	258.6	308.5	5,014.1	6.2	61.8
Born outside Australia	1,406.8	1,615.1	99.7	115.6	1,730.8	6.7	63.6
Africa	37.6	41.9	*	*	44.9	*	66.9
America	39.7	44.9	*	*	48.6	*	68.3
Asia	146.6	165.5	17.0	18.3	183.9	10.0	64.8
Lebanon	18.9	20.5	4.6	4.6	25.1	18.2	63.6
Europe	1,095.0	1,262.0	71.4	82.2	1,344.3	6.1	62.5
Germany, Fed. Rep.	50.8	60.5	*	*	62.9	*	63.6
Greece	80.3	90.9	6.9	7.3	98.2	7.5	64.5
Italy	149.3	162.9	5.1	6.6	169.4	3.9	61.9
Malta	33.9	36.8	*	*	39.5	*	62.3
Netherlands	44.5	53.6	*	*	55.8	*	61.4
Poland	25.8	29.2	*	*	31.2	*	54.2
U.K. and Ireland	522.3	619.3	36.7	43.2	662.5	6.5	62.1
Yugoslavia	89.0	95.3	6.8	7.3	102.5	7.1	71.8
Oceania	87.7	100.6	6.6	8.3	108.9	7.6	73.0
New Zealand	77.5	88.5	5.2	6.3	94.9	6.7	75.0

(a) Excludes persons in institutions. See explanatory notes paragraph 15.

TABLE 10. CIVILIAN LABOUR FORCE, BORN OUTSIDE AUSTRALIA, BY EMPLOYMENT STATUS, AND PERIOD OF ARRIVAL IN AUSTRALIA, FEBRUARY 1981

	Africa	America	Asia	Europe		Oceania		Total			Persons
				U.K. and Ireland	Other countries	New Zealand	Total	Females			
								Males	Married	Total	
EMPLOYED (' 000)											
Arrived before 1961	11.3	4.6	27.6	194.3	350.5	11.8	14.7	427.8	140.4	175.5	603.3
1961-1965	7.6	*	15.4	122.8	97.8	5.9	6.9	164.5	65.9	88.1	252.6
1966-1970	9.9	5.0	32.4	171.2	112.4	10.9	13.8	222.1	80.9	122.7	344.7
1971-1979	12.1	30.5	81.3	118.4	76.7	46.1	50.8	228.6	98.2	141.2	369.8
1980 to survey date	*	*	8.9	12.6	5.3	13.8	14.4	30.3	6.0	14.4	44.7
UNEMPLOYED (' 000)											
Arrived before 1961	*	*	*	9.6	12.3	*	*	14.8	6.1	9.1	23.9
1961-1965	*	*	*	9.1	6.5	*	*	10.6	*	7.2	17.8
1966-1970	*	*	*	13.6	10.9	*	*	14.8	9.0	15.2	29.9
1971-1979	*	*	8.8	7.8	8.2	*	*	17.0	8.1	14.1	31.1
1980 to survey date	*	*	5.1	*	*	*	*	5.3	4.6	7.7	13.0
LABOUR FORCE (' 000)											
Arrived before 1961	11.6	4.6	28.9	203.9	362.8	12.1	15.1	442.5	146.5	184.6	627.1
1961-1965	8.5	*	16.0	131.9	104.3	6.3	7.7	175.1	69.7	95.3	270.4
1966-1970	10.7	6.5	34.9	184.8	123.3	11.3	14.5	236.8	89.9	137.8	374.6
1971-1979	13.0	32.2	90.1	126.3	84.9	48.8	54.5	245.6	106.3	155.3	400.9
1980 to survey date	*	*	14.0	15.7	6.5	16.3	17.2	35.6	10.7	22.1	57.7
UNEMPLOYMENT RATE (per cent)											
Arrived before 1961	*	*	*	4.7	3.4	*	*	3.3	4.2	4.9	3.8
1961-1965	*	*	*	6.9	6.2	*	*	6.1	*	7.5	6.6
1966-1970	*	*	*	7.3	8.9	*	*	6.2	10.0	11.0	8.0
1971-1979	*	*	9.8	6.2	9.7	*	*	6.9	7.6	9.1	7.7
1980 to survey date	*	*	36.4	*	*	*	*	14.8	43.4	34.8	22.5
PARTICIPATION RATE (per cent)(a)											
Arrived before 1961	60.4	47.6	57.3	46.5	58.6	46.5	49.0	71.3	36.3	33.7	53.7
1961-1965	63.7	*	73.9	72.6	68.7	83.2	81.2	88.4	49.4	52.0	70.9
1966-1970	67.1	73.5	70.0	74.6	70.2	71.6	71.2	86.9	52.8	56.1	72.3
1971-1979	78.6	71.3	66.2	72.4	68.5	86.2	82.6	86.0	54.1	56.1	71.3
1980 to survey date	*	*	54.5	65.6	47.2	79.3	76.4	77.5	38.7	47.9	62.7

(a) Excludes persons in institutions. See explanatory notes, paragraph 15.

TABLE 11. CIVILIAN LABOUR FORCE, BY AGE, FEBRUARY 1981

Age group (years)	Number ('000)					Participation rate (per cent)				
	Females					Females				
	Males	Married	Not married(a)	Total	Persons	Males	Married	Not married(a)	Total	Persons
15-64	4,205.5	1,441.6	1,010.8	2,452.4	6,657.9	87.2	45.2	65.5	51.8	69.7
15-19	451.5	11.9	384.3	396.2	847.7	69.2	46.5	64.1	63.4	66.4
20-24	590.4	156.9	281.0	437.9	1,028.3	93.4	53.6	85.1	70.3	82.0
25-34	1,130.3	454.8	170.7	625.5	1,755.8	95.8	46.9	79.5	52.8	74.3
35-44	880.8	430.4	69.6	500.0	1,380.8	95.6	55.5	65.9	56.8	76.6
45-54	705.2	287.6	61.6	349.3	1,054.4	90.9	45.9	55.5	47.4	69.7
55-59	301.3	77.6	28.4	105.9	407.2	81.6	27.2	33.4	28.6	55.1
60-64	146.2	22.4	15.1	37.6	183.7	50.3	10.6	15.4	12.1	30.5
65 and over	65.9	12.6	8.4	21.0	86.9	11.0	3.9	1.7	2.5	6.1
Total	4,271.4	1,454.2	1,019.2	2,473.4	6,744.8	78.8	41.4	49.8	44.5	61.4

(a) Comprises never married, widowed and divorced.

TABLE 12. LABOUR FORCE PARTICIPATION RATES, BY AGE AND BIRTHPLACE, FEBRUARY 1981(a) (per cent)

Age group (years)	Born in Australia			Born outside Australia		
	Males	Females	Persons	Males	Females	Persons
15-64	87.4	51.9	69.5	88.5	52.2	71.4
15-19	70.7	64.2	67.5	61.1	59.7	60.4
20-24	94.6	71.6	83.1	91.4	64.5	78.6
25-34	96.5	51.6	73.8	95.7	56.8	76.6
35-44	96.1	54.8	75.4	95.4	61.6	79.7
45-54	91.1	46.9	68.6	91.6	49.2	73.0
55-59	82.0	28.7	54.4	82.5	28.9	57.9
60-64	49.4	12.0	29.8	55.5	13.0	34.6
65 and over	12.5	2.6	6.7	8.9	3.6	6.1
Total	79.5	45.1	61.8	79.8	45.8	63.6

(a) Excludes persons in institutions. See explanatory notes, paragraph 15.

TABLE 13. EMPLOYED PERSONS: FULL-TIME AND PART-TIME STATUS, BY AGE, FEBRUARY 1981 ('000)

	Age group (years)								Total
	15-19	20-24	25-34	35-44	45-54	55-59	60-64	65 and over	
MALES									
Full-time workers	325.2	515.8	1,057.4	846.0	665.2	280.5	126.0	39.8	3,855.8
Part-time workers	55.7	24.2	30.1	16.3	18.3	11.6	14.9	24.6	195.6
Total	380.9	540.0	1,087.5	862.3	683.5	292.1	140.8	64.4	4,051.4
MARRIED FEMALES									
Full-time workers	6.8	113.4	241.7	215.7	145.0	40.4	10.6	*	777.0
Part-time workers	*	29.3	181.4	195.6	132.2	36.3	11.2	8.6	597.5
Total	9.6	142.7	423.1	411.3	277.2	76.7	21.8	12.2	1,374.5
ALL FEMALES									
Full-time workers	231.3	334.2	375.5	268.1	189.6	59.2	20.6	6.8	1,485.2
Part-time workers	86.5	62.9	204.9	208.8	146.7	44.9	15.9	13.5	784.2
Total	317.8	397.0	580.4	476.9	336.2	104.1	36.5	20.4	2,269.3
PERSONS									
Full-time workers	556.5	850.0	1,432.8	1,114.0	854.8	339.7	146.6	46.6	5,341.0
Part-time workers	142.2	87.0	235.0	225.2	164.9	56.5	30.8	38.1	979.7
Total	698.7	937.0	1,667.9	1,339.2	1,019.7	396.2	177.3	84.7	6,320.7

**TABLE 18. AVERAGE WEEKLY HOURS WORKED BY EMPLOYED PERSONS,
BY INDUSTRY AND OCCUPATION FEBRUARY 1981(a)**

	Females			Total	Persons
	Males	Married	Not married(b)		
INDUSTRY					
Agriculture and services to agriculture	49.7	27.6	37.5	29.4	44.4
Forestry and logging, fishing and hunting	41.8	*	*	*	40.2
Mining	39.3	*	*	34.3	38.9
Manufacturing	39.7	33.5	36.7	34.5	38.4
Food beverages and tobacco	39.4	33.4	34.9	33.9	37.8
Metal products	39.5	30.5	35.9	32.3	38.7
Other manufacturing	39.8	33.8	37.2	34.9	38.4
Construction	39.3	18.7	36.3	21.9	37.5
Wholesale and retail trade	41.4	28.7	29.3	28.9	36.1
Transport and storage	39.0	27.9	32.2	29.6	37.5
Finance, property and business services	39.5	27.2	34.3	30.7	35.5
Community services	37.5	28.1	33.7	30.3	33.1
Recreation, personal and other services	40.1	26.2	28.4	27.1	32.7
Other industries	35.3	28.2	33.7	30.9	34.2
Total employed	39.9	28.5	32.5	30.1	36.4
OCCUPATION					
Professional, technical, etc.	39.0	29.1	35.8	31.9	35.8
Administrative, executive and managerial	46.9	36.9	41.8	38.1	45.7
Clerical	35.6	27.7	33.5	30.3	31.9
Sales	40.9	28.7	27.1	28.0	34.2
Farmers, fishermen, timber-getters, etc.	47.3	28.4	38.7	30.3	43.6
Transport and communication	39.7	26.3	33.5	29.0	38.3
Tradesmen, production-process workers and labourers, n.e.c.; and miners, quarrymen, etc.	38.5	33.5	35.2	34.0	38.0
Service, sport and recreation	36.2	24.4	27.5	25.5	29.6
Total employed	39.9	28.5	32.5	30.1	36.4

(a) Figures of hours relate to average weekly hours worked, not hours paid for. See paragraph 17, explanatory notes. (b) Comprises never married, widowed, and divorced.

TABLE 19. EMPLOYED MARRIED FEMALES, BY INDUSTRY AND HOURS WORKED, FEBRUARY 1981(a)

Industry division or sub-division	Part-time workers			Total	Full-time workers	Total
	Hours worked					
	Under 16	16-29	30-34			
Agriculture and services to agriculture	31.7	12.8	4.6	49.2	33.2	82.4
Manufacturing	14.5	21.1	8.4	44.1	162.2	206.3
Construction	20.8	5.5	*	28.4	12.7	41.1
Wholesale and retail trade	77.5	58.0	13.3	148.7	158.3	307.0
Transport and storage	9.4	5.1	*	15.3	18.7	34.1
Finance, property and business services	28.5	19.0	10.5	58.0	69.0	127.0
Community services	64.5	65.5	27.6	157.6	215.7	373.2
Recreation, personal and other services	44.3	28.8	5.6	78.7	53.1	131.8
Other industries	9.3	5.5	*	17.6	54.0	71.5
Total	300.5	221.4	75.6	597.5	777.0	1,374.5

(a) Hours worked in the survey week, see definition, paragraph 17, explanatory notes.

TABLE 20. EMPLOYED PERSONS, BY HOURS WORKED, FEBRUARY 1981

	Females			Total	Persons
	Males	Married	Not married(a)		
NUMBER EMPLOYED (' 000)					
Weekly hours worked(b)—					
0(c)	259.6	90.5	47.7	138.2	397.7
1-15	116.7	270.5	104.3	374.8	491.5
16-29	183.8	253.2	83.9	337.1	520.8
30-34	198.2	112.9	62.4	175.3	373.5
35-39	455.8	176.0	173.5	349.5	805.3
40	1,395.7	306.8	302.4	609.2	2,004.9
41-44	254.0	37.3	44.4	81.6	335.7
45-48	377.6	38.1	34.7	72.9	450.5
49 and over	810.1	89.3	41.6	130.8	940.9
Total	4,051.4	1,374.5	894.9	2,269.3	6,320.7
WEEKLY HOURS WORKED(b)					
Aggregate weekly hours worked (million)	161.8	39.1	29.1	68.2	230.0
By full-time workers	158.6	29.7	26.4	56.1	214.8
By part-time workers	3.2	9.4	2.7	12.1	15.3
Average weekly hours worked	39.9	28.5	32.5	30.1	36.4
By full-time workers	41.1	38.3	37.3	37.8	40.2
By part-time workers	16.2	15.7	14.5	15.4	15.6
By wage and salary earners	38.4	28.5	32.3	30.2	35.3
By others(d)	47.3	28.4	36.9	29.4	42.2
Average weekly hours worked by persons who worked one hour or more in the survey week	42.7	30.5	34.3	32.0	38.8
By full-time workers	44.0	40.9	39.4	40.2	42.9
By part-time workers	17.3	16.8	15.3	16.4	16.6

(a) Comprises never married, widowed and divorced. (b) The figures relate to hours worked, not hours paid for. See explanatory notes, paragraph 17. (c) Persons who had a job from which they were absent for the whole of the survey week. See explanatory notes, paragraph 17, for definition. (d) Employers; self-employed persons; unpaid family helpers who worked 15 hours or more in the survey week.

TABLE 21. EMPLOYED PERSONS: OCCUPATIONAL STATUS OF FULL-TIME AND PART-TIME WORKERS, FEBRUARY 1981(a)
(' 000)

	Full-time workers			Part-time workers			Total		
	Males	Females	Persons	Males	Females	Persons	Males	Females	Persons
Employers	249.6	50.4	300.0	9.5	50.0	59.4	259.0	100.4	359.4
Self-employed	399.8	75.3	475.1	38.0	97.2	135.2	437.8	172.5	610.3
Wage and salary earners	3,199.4	1,352.6	4,551.9	144.0	631.4	775.4	3,343.3	1,983.9	5,327.3
Unpaid family helpers(b)	7.2	6.9	14.0	*	5.6	9.7	11.2	12.5	23.7
Total	3,855.8	1,485.2	5,341.0	195.6	784.2	979.7	4,051.4	2,269.3	6,320.7

(a) See paragraphs 20 and 21, explanatory notes. (b) Unpaid family helpers who worked 15 hours or more in the survey week.

TABLE 22. FULL-TIME WORKERS WHO WORKED LESS THAN 35 HOURS, BY REASON, FEBRUARY 1981
(' 000)

Reason for working less than 35 hours	Females			Total	Persons
	Males	Married	Not married(a)		
Leave, holiday or flextime	318.9	73.1	64.6	137.7	456.6
Own illness or injury	126.5	32.9	29.7	62.7	189.2
Bad weather, plant breakdown, etc.	30.7	*	*	*	33.1
Began or left job in the survey week	14.7	*	6.6	8.7	23.5
Stood down, on short time, insufficient work	33.0	7.9	*	10.3	43.3
Other reasons	38.8	12.4	7.0	19.4	58.2
Total	562.6	129.6	111.6	241.2	803.8

(a) Comprises never married, widowed and divorced.

TABLE 23. PART-TIME WORKERS : WHETHER PREFERRED TO WORK MORE HOURS AND WHETHER LOOKING FOR FULL-TIME WORK, BY AGE, FEBRUARY 1981
(' 000)

	Age group (years)						Total
	15-19	20-24	25-34	35-44	45-54	55 and over	
MALES							
Total	55.7	24.2	30.1	16.3	18.2	51.0	195.6
Preferred not to work more hours	42.8	16.9	20.8	12.8	14.0	47.6	154.9
Preferred to work more hours	12.9	7.3	9.3	7.8	*	*	40.7
Had actively looked for full-time work(a)	7.4	*	4.6	*	*	*	19.2
MARRIED FEMALES							
Total	*	29.3	181.4	195.6	132.2	56.1	597.5
Preferred not to work more hours	*	23.3	162.8	178.5	122.8	54.1	543.7
Preferred to work more hours	*	6.0	18.6	17.0	9.5	*	53.8
Had actively looked for full-time work(a)	*	4.6	4.6	4.6	*	*	9.7
ALL FEMALES							
Total	86.5	62.8	204.9	208.8	146.7	74.4	784.2
Preferred not to work more hours	60.9	44.9	180.4	188.4	134.4	70.5	679.5
Preferred to work more hours	25.6	17.9	24.5	20.5	12.3	*	104.7
Had actively looked for full-time work(a)	14.2	8.9	4.7	4.8	*	*	34.8
PERSONS							
Total	142.2	87.0	235.0	225.2	164.9	125.4	979.7
Preferred not to work more hours	103.7	61.8	201.2	201.2	148.3	118.1	834.4
Preferred to work more hours	38.5	25.2	33.8	24.0	16.6	7.3	145.3
Had actively looked for full-time work(a)	21.7	12.2	9.3	6.4	4.5	*	54.0

(a) In the four weeks up to the end of the survey week.

TABLE 24. PART-TIME WORKERS : WHETHER PREFERRED TO WORK MORE HOURS AND WHETHER LOOKING FOR FULL-TIME WORK, BY HOURS WORKED, FEBRUARY 1981
(' 000)

	Persons who worked in the survey week Hours worked in the survey week						Persons who did not work in the survey week(a)	Total
	1-5	6-10	11-15	16-20	21-29	30-34		
MALES								
Total	24.6	36.7	21.7	31.9	33.0	35.6	12.0	195.6
Preferred not to work more hours	20.7	28.1	15.6	24.9	24.7	31.1	9.9	154.9
Preferred to work more hours	*	8.6	6.1	7.0	8.3	4.5	*	40.7
Had actively looked for full-time work(b)	*	4.7	7.0	4.5	*	*	*	19.2
MARRIED FEMALES								
Total	68.3	103.8	88.4	109.4	111.9	75.6	40.1	597.5
Preferred not to work more hours	58.6	90.1	80.9	100.9	105.4	71.7	36.0	543.7
Preferred to work more hours	9.6	13.6	7.5	8.6	6.5	*	*	53.8
Had actively looked for full-time work(b)	5.7	*	*	*	*	*	*	9.7
ALL FEMALES								
Total	98.3	153.0	106.4	134.5	143.4	98.6	49.9	784.2
Preferred not to work more hours	81.0	126.3	92.7	119.3	126.0	90.5	43.7	679.5
Preferred to work more hours	17.3	26.6	13.7	15.3	17.4	8.1	6.2	104.7
Had actively looked for full-time work(b)	4.8	9.3	5.4	5.5	6.8	*	*	34.8
PERSONS								
Total	122.8	189.7	128.2	166.4	176.4	134.2	61.9	979.7
Preferred not to work more hours	101.6	154.4	108.3	144.2	150.7	121.5	53.6	834.4
Preferred to work more hours	21.2	35.3	19.9	22.3	25.7	12.7	8.3	145.3
Had actively looked for full-time work(b)	6.4	14.0	8.8	9.0	11.2	*	*	54.0

(a) Persons who had a part-time job from which they were absent for the whole of the survey week.

(b) In the four weeks up to the end of the survey week.

TABLE 25. EMPLOYED PERSONS : EMPLOYMENT/POPULATION RATIOS BY AGE AND MARITAL STATUS, FEBRUARY 1981
(per cent)

Age group (years)	Males			Females			Persons
	Married	Not married(a)	Total	Married	Not married(a)	Total	
15-64	88.6	72.4	82.7	42.8	57.4	47.5	65.3
15-19	*	58.2	58.4	37.5	51.4	50.9	54.7
20-24	90.8	83.9	85.5	48.7	77.0	63.7	74.7
25-34	94.6	85.5	92.2	43.7	73.3	49.0	70.6
35-44	95.1	82.8	93.6	53.1	62.2	54.2	74.3
45-54	90.2	73.5	88.1	44.2	53.2	45.6	67.4
55-59	81.6	63.1	79.1	26.9	32.3	28.1	53.6
60-64	49.8	40.8	48.4	10.3	14.9	11.7	29.5
65 and over	12.0	7.3	10.7	3.7	1.6	2.5	5.9
Total	78.9	67.1	74.7	39.1	43.7	40.8	57.6

(a) Comprises never married, widowed and divorced.

TABLE 26. UNEMPLOYED PERSONS, BY AGE, STATES, FEBRUARY 1981
(' 000)

Age group (years)	New South Wales	Victoria	Queensland	South Australia	Western Australia	Tasmania	Australia(a)
MALES							
15-19	22.3	17.9	10.8	7.7	7.3	2.4	70.6
20-24	14.5	14.7	6.7	6.5	5.1	1.8	50.4
25-34	12.4	11.8	7.0	5.3	3.6	*	42.8
35 and over	21.7	12.9	8.7	5.8	4.4	1.6	56.2
Total	70.8	57.2	33.2	25.4	20.3	6.8	220.0
FEMALES							
15-19	24.0	20.7	11.4	10.5	7.1	2.8	78.4
20-24	12.9	12.1	7.4	4.2	3.3	*	40.9
25-34	13.8	13.6	8.4	3.0	3.9	*	45.1
35 and over	14.9	12.2	3.9	3.2	3.0	*	39.7
Total	65.5	58.6	31.1	20.9	17.3	5.9	204.1
PERSONS							
15-19	46.3	38.6	22.2	18.2	14.4	5.2	149.0
20-24	27.3	26.8	14.1	10.7	8.4	2.7	91.3
25-34	26.1	25.4	15.4	8.4	7.5	2.3	87.9
35 and over	36.6	25.1	12.6	9.0	7.4	2.6	95.9
Total	136.3	115.8	64.3	46.3	37.6	12.8	424.1

(a) Includes the Northern Territory and the Australian Capital Territory.

TABLE 27. UNEMPLOYED PERSONS, BY AGE AND WHETHER LOOKING FOR FULL-TIME OR PART-TIME WORK, FEBRUARY 1981

	Number unemployed ('000)					Unemployment rate (per cent)				
	Males		Females		Persons	Males		Females		Persons
	Married	Total	Married	Total		Married	Total	Married	Total	
LOOKING FOR FULL-TIME WORK										
Total	73.7	203.6	46.8	154.7	358.4	2.7	5.0	5.7	9.4	6.3
Aged 15-19 years	*	60.2	*	66.9	127.2	*	15.6	*	22.4	18.6
Looking for first job	*	29.8	*	33.4	63.2
Attending school	*	4.9	*	*	8.4	n.a.	n.a.	n.a.	n.a.	n.a.
Aged 20 years and over	72.9	143.4	45.5	87.8	231.2	2.7	3.9	5.6	6.5	4.6
20-24 years	8.0	48.6	8.8	33.3	81.8	6.0	8.6	7.2	9.1	8.8
25-34 years	22.5	41.6	17.4	29.1	70.7	2.7	3.8	6.7	7.2	4.7
35-44 years	14.1	18.0	12.3	15.1	33.1	1.8	2.1	5.4	5.3	2.9
45-54 years	17.5	20.8	6.4	8.9	29.7	2.8	3.0	4.2	4.5	3.4
55 years and over	10.9	14.4	*	*	15.8	2.7	3.1	*	*	2.9
Aged 15-64 years	73.1	202.9	46.8	154.5	357.4	2.7	5.0	5.7	9.5	6.3
LOOKING FOR PART-TIME WORK										
Total	*	16.4	32.9	49.4	65.8	*	7.7	5.2	5.9	6.3
Aged 15-19 years	*	10.4	*	11.4	21.8	*	15.7	*	11.7	13.3
Attending school	*	6.3	*	6.8	13.1	*	17.3	*	15.0	16.0
Aged 20 years and over	*	6.0	31.9	37.9	44.0	*	4.1	5.1	5.2	5.0
20-24 years	*	*	5.5	7.6	9.5	*	*	15.7	10.8	9.8
25-34 years	*	*	14.3	16.0	17.3	*	*	7.3	7.3	6.8
35-44 years	*	*	6.8	8.0	8.4	*	*	3.4	3.7	3.6
45-54 years	*	*	*	*	5.0	*	*	*	*	2.9
55 years and over	*	*	5.4	6.3	*	*	*	2.8	2.8	*
Aged 15-64 years	*	15.6	32.5	48.9	64.5	*	8.4	5.2	6.0	6.4
TOTAL										
Total	76.0	220.0	79.8	204.1	424.1	2.7	5.2	5.5	8.3	6.3
Aged 15-19 years	*	70.6	*	78.4	149.0	*	15.6	*	19.8	17.6
Attending school	*	11.2	*	10.3	21.5	*	25.7	*	20.5	22.9
Aged 20 years and over(a)	75.2	149.5	77.4	125.7	275.2	2.7	3.9	5.4	6.1	4.7
20-24 years	8.0	50.4	14.2	40.9	91.3	5.9	8.5	9.1	9.3	8.9
25-34 years	22.9	42.8	31.7	45.1	87.9	2.7	3.8	7.0	7.2	5.0
35-44 years	14.4	18.5	19.1	23.1	41.6	1.8	2.1	4.4	4.6	3.0
45-54 years	18.1	21.7	10.4	13.0	34.7	2.9	3.1	3.6	3.7	3.3
55-59 years	6.7	9.2	*	*	11.0	2.5	3.1	*	*	2.7
60-64 years	*	5.3	*	*	6.4	*	3.7	*	*	3.5
Aged 15-64 years	75.0	218.5	79.3	203.4	421.9	2.7	5.2	5.5	8.3	6.3

(a) Includes unemployed persons aged 65 years and over, details for whom are not shown separately.

TABLE 28. UNEMPLOYED PERSONS, BY AGE AND BIRTHPLACE, FEBRUARY 1981

	Number unemployed ('000)			Unemployment rate (per cent)		
	Males	Females	Persons	Males	Females	Persons
	BORN IN AUSTRALIA					
Total	157.6	150.9	308.5	5.0	8.0	6.2
Looking for full-time work	145.4	113.2	258.6	4.9	9.2	6.2
Looking for part-time work	12.2	37.6	49.9	7.3	5.8	6.1
Aged 15-19 years	59.9	66.1	126.0	15.0	19.2	17.0
Aged 20 years and over	97.7	84.8	182.4	3.6	5.5	4.3
20-24 years	37.9	33.3	71.2	7.7	8.9	8.3
25-34 years	29.1	29.4	58.5	3.5	6.4	4.5
35 years and over	30.7	22.0	52.7	2.2	3.1	2.5
BORN OUTSIDE AUSTRALIA						
Total	62.4	53.2	115.6	5.5	8.9	6.7
Looking for full-time work	58.2	41.5	99.7	5.3	10.0	6.6
Looking for part-time work	*	11.7	15.9	*	6.5	7.1
Aged 15-19 years	10.7	12.3	22.9	20.2	23.4	21.8
Aged 20 years and over	51.8	41.0	92.7	4.8	7.5	5.7
20-24 years	12.5	7.6	20.1	12.4	11.7	12.1
25-34 years	13.7	15.7	29.4	4.6	9.3	6.3
35 years and over	25.6	17.7	43.2	3.7	5.7	4.3

TABLE 29. UNEMPLOYED PERSONS, BY DURATION OF UNEMPLOYMENT AND AGE, ETC., FEBRUARY 1981

Duration of unemployment (weeks)	Age group (years)				Total(a)	Married	Looking for—		
	15-19	20-24	25-34	35-54			Not married(b)	Full-time work	Part-time work
MALES									
— '000 —									
Under 2	6.0	*	*	} 7.8 {	17.3	6.6	10.7	14.5	} 5.8
2 and under 4	6.2	4.6	6.1		21.4	6.9	14.4	18.3	
4 and under 8	12.4	8.1	8.7	4.9	35.8	12.1	23.7	33.5	} 6.5
8 and under 13	19.9	9.3	5.2	4.9	40.1	9.8	30.3	35.9	
13 and under 26	9.6	6.9	6.1	7.3	32.6	13.4	19.3	31.4	*
26 and under 39	*	4.8	} 5.1 {	} 4.5 {	16.2	6.3	9.9	15.6	*
39 and under 52	} 6.8 {	} 6.3 {			8.9	*	5.2	8.8	*
52 and under 65			} 5.3 {	} 4.5 {	} 4.5 {	15.2	4.9	10.3	14.1
65 and under 78	*	*				4.5	*	*	*
78 and under 91	} 5.3 {	} 5.0 {	} 5.8 {	} 5.8 {	} 5.7 {	} 5.7 {	} 5.7 {	} 5.7 {	} 5.7 {
91 and under 104									
104 and over		5.0	*	5.8	22.3	8.5	13.8	21.5	*
Total	70.6	50.4	42.8	40.1	220.0	76.0	144.1	203.6	16.4
— Weeks —									
Average (mean) duration	20.7	32.5	30.7	44.6	33.5	37.2	31.5	34.7	18.2
Median duration	10.7	12.9	11.5	17.3	12.4	15.5	11.8	12.9	8.1
FEMALES									
— '000 —									
Under 2	8.2	*	8.0	7.3	27.7	16.5	11.2	13.6	14.1
2 and under 4	8.8	4.8	8.0	5.7	27.8	14.0	13.8	17.8	10.1
4 and under 8	14.1	6.2	5.9	5.1	31.7	11.9	19.8	24.9	6.7
8 and under 13	17.3	7.9	5.0	} 6.7 {	34.1	8.9	25.2	27.5	6.6
13 and under 26	9.7	5.3	6.6		25.6	10.1	15.5	21.7	} 7.0
26 and under 39	6.1	} 5.8 {	} 6.0 {	} 6.2 {	15.2	6.7	8.5	12.1	
39 and under 52	*				6.1	4.9	5.0	5.3	
52 and under 65	5.6	} 5.5 {	} 5.1 {	} 5.5 {	13.3	*	9.4	10.7	} 5.1 {
65 and under 78	*				*	*	*	*	
78 and under 91	*	} 4.8 {	} 6.0 {	} 5.1 {	*	*	*	*	} 4.9
91 and under 104	*				*	*	*	*	
104 and over		6.0	*	*	16.1	4.7	11.4	15.0	*
Total	78.4	40.9	45.1	36.1	204.1	79.8	124.3	154.7	49.4
— Weeks —									
Average (mean) duration	22.4	36.5	21.8	26.9	26.0	20.8	29.4	30.3	12.6
Median duration	10.3	11.6	8.6	8.0	10.2	7.2	11.4	11.8	4.3
PERSONS									
— '000 —									
Under 2	14.2	7.2	11.0	11.3	45.0	23.0	21.9	28.1	16.9
2 and under 4	15.0	9.4	14.1	9.5	49.2	21.0	28.2	36.1	13.1
4 and under 8	26.5	14.3	14.6	10.1	67.5	24.0	43.4	58.4	9.1
8 and under 13	37.2	17.2	10.3	7.9	74.2	18.7	55.5	63.4	10.8
13 and under 26	19.3	12.2	12.7	11.0	58.3	23.4	34.8	53.2	5.1
26 and under 39	10.5	6.8	8.3	5.2	31.4	13.0	18.4	27.7	} 4.6
39 and under 52	4.8	*	*	*	15.0	4.8	10.2	14.0	
52 and under 65	10.0	7.3	5.0	4.5	28.5	8.7	19.7	24.8	} 6.3
65 and under 78	*	*	*	} 4.7 {	6.8	} 5.3 {	*	6.6	
78 and under 91	*	*	*		7.6		4.7	7.1	*
91 and under 104	*	*	*	*	*	*	*	*	
104 and over	7.2	11.0	5.6	9.2	38.4	13.2	25.2	36.5	*
Total	149.0	91.3	87.9	76.3	424.1	155.7	268.4	358.4	65.8
— Weeks —									
Average (mean) duration	21.6	34.3	26.1	36.2	29.9	28.8	30.5	32.8	14.0
Median duration	10.5	12.3	10.1	12.6	11.4	10.6	11.7	12.5	5.3

(a) Includes persons aged 55 years and over, details for whom are not shown separately.

(b) Comprises never married, widowed and divorced.

TABLE 30. UNEMPLOYED PERSONS, BY INDUSTRY AND OCCUPATION OF LAST FULL-TIME JOB AND DURATION OF UNEMPLOYMENT(a), FEBRUARY 1981 (' 000)

	Duration of unemployment (weeks)							Total
	Under 4	4 and under 8	8 and under 13	13 and under 26	26 and under 39	39 and under 65	65 and over	
Had worked for two weeks or more in a full-time job in the last two years	56.4	43.5	35.9	45.0	21.3	26.3	10.5	238.9
Industry division—								
Manufacturing	13.8	10.0	7.4	12.2	6.1	8.8	*	62.1
Construction	6.4	7.7		7.0		*	*	24.9
Wholesale and retail trade	12.2	10.5	11.7	12.9	5.5	6.2	*	61.4
Finance, property and business services	5.6		5.0		*	*	*	11.9
Community services	5.5	6.9		4.6	*	*	*	20.4
Recreation, personal and other services	6.1	4.5	5.7			4.8		21.1
Other industries	8.5	8.6	5.9	5.5	6.8		*	37.0
Occupation group(b)—								
Professional, technical, etc.	5.5		5.2		*	*	*	12.0
Clerical	11.1	4.8	*	6.2	5.2		*	32.1
Sales	6.0	*	5.2	6.0	4.6		*	27.3
Farmers, fishermen, etc.	8.2			5.9		*	*	16.0
Transport and communication	4.5			4.9		*	*	11.8
Tradesmen, production-process workers and labourers, n.e.c.	21.5	19.1	16.0	18.6	10.6	15.8	4.7	106.3
Service, sport and recreation	7.0	5.7	*	7.0		5.1		26.9
Other(c)	33.2	24.0	38.3	13.2	10.2	17.1	44.7	180.7
Looking for first job	16.7	16.1	30.6	7.8	*	9.2	8.9	93.2
Other	16.4	7.9	7.7	5.5	6.2	7.9	35.8	87.4
Stood down	4.6							4.6
Total	94.2	67.5	74.2	58.3	31.4	43.4	55.2	424.1

(a) Duration of unemployment is not available for some industry divisions and occupation groups because of the high standard error of the estimates. (b) Excludes administrative, executive and managerial workers; and miners, quarrymen and related workers. (c) Had never worked for two weeks or more in a full-time job or had not done so in the last two years. Industry and occupation were not obtained for these persons.

TABLE 31. UNEMPLOYED PERSONS AGED 15 TO 19 YEARS, BY DURATION OF UNEMPLOYMENT AND WHETHER ATTENDING SCHOOL(a), FEBRUARY 1981

	Attending school	Not attending school		Total
		Left school before 1980	Left school 1980 to survey date	
NUMBER (' 000)				
Duration of unemployment (weeks)—				
Under 4	7.0	13.1	9.1	29.2
4 and under 13	10.5	21.4	31.8	63.7
13 and under 26	*	13.1	4.6	19.3
26 and over	*	31.1	*	36.7
Total	21.5	78.7	48.7	149.0
AVERAGE (MEAN) DURATION OF UNEMPLOYMENT (weeks)				
Males	10.4	31.3	10.5	20.7
Females	10.3	32.5	9.0	22.4
Persons	10.4	32.0	9.8	21.6
Looking for—				
Full-time work	9.4	33.3	10.0	23.4
Part-time work	11.0	14.0	*	11.1
MEDIAN DURATION OF UNEMPLOYMENT (weeks)				
Males	8.6	18.0	9.1	10.7
Females	7.8	17.6	8.7	10.3
Persons	8.3	17.8	8.9	10.5
Looking for—				
Full-time work	9.0	19.6	9.1	11.2
Part-time work	7.1	6.3	*	6.6

(a) For employment status of persons aged 15-19 years see Table 6.

TABLE 32. UNEMPLOYED PERSONS, BY ACTIVE STEPS TAKEN TO FIND WORK AND AGE, FEBRUARY 1981(a)
 (' 000)

Age group (years)	Checked or registered with an employment agency	Wrote, phoned or applied in person to an employer for work	Took other active steps	Total(b)
MALES				
15-19	51.2	16.7	*	70.6
20-24	44.5	4.8	*	50.4
25 and over	83.1	11.1	4.5	99.1
Total	178.8	32.6	7.4	220.0
FEMALES				
15-19	61.6	14.6	*	78.4
20-24	29.4	9.3	*	40.9
25 and over	39.9	36.2	6.7	84.8
Total	131.0	60.1	9.8	204.1
PERSONS				
15-19	112.8	31.3	*	149.0
20-24	73.9	14.1	*	91.3
25 and over	123.0	47.3	11.1	183.9
Total	309.7	92.6	17.2	424.1

(a) Active steps were recorded in order of response by persons in the survey and only one active step was recorded for each person. (b) Includes unemployed persons stood down for the whole of the survey week.

TABLE 33. PERSONS NOT IN THE LABOUR FORCE, BY AGE AND MARITAL STATUS, ETC., FEBRUARY 1981

Age group (years)	Males			Females			Persons	Proportion of population(b)
	Married	Not married(a)	Total	Married	Not married(a)	Total		
— '000 —								
15-19	*	201.0	201.1	13.7	214.9	228.5	429.6	33.6
20-24	4.9	36.5	41.4	135.8	49.1	184.9	226.4	18.0
25-34	23.7	26.0	49.7	514.4	44.0	558.4	608.1	25.7
35-44	25.4	15.2	40.6	344.5	36.0	380.6	421.2	23.4
45-54	48.3	22.3	70.6	338.9	49.4	388.3	458.8	30.3
55-59	52.0	15.7	67.8	207.4	56.7	264.0	331.8	44.9
60-64	119.3	25.3	144.6	190.0	83.4	273.4	418.0	69.5
65-69	164.7	39.1	203.7	159.1	110.5	269.5	473.3	90.0
70 and over	225.1	104.6	329.7	153.0	384.1	537.1	866.8	96.2
Total	663.6	485.7	1,149.2	2,056.7	1,028.0	3,084.7	4,233.9	38.6
15-20 attending school	n.a.	n.a.	159.1	n.a.	n.a.	150.0	309.1	..

(a) Comprises never married, widowed and divorced. (b) Persons not in the labour force as a percentage of the civilian population in the same group.

TABLE 34. PERSONS NOT IN THE LABOUR FORCE, BY WHETHER LOOKING FOR WORK, ETC., FEBRUARY 1981

	Males			Females			Persons
	Married	Not married(a)	Total	Married	Not married(a)	Total	
— '000 —							
Looking for work	8.4	11.1	19.5	35.1	17.3	52.4	71.9
Took active steps to find work but not available to start work in the survey week(b)	*	6.8	10.0	10.4	8.7	19.1	29.1
Did not take active steps to find work	5.2	*	9.5	24.8	8.6	33.3	42.8
Not looking for work	626.4	427.2	1,053.6	2,002.0	917.3	2,919.3	3,972.9
Permanently unable to work	15.8	9.5	25.3	5.3	15.7	21.0	46.3
In institutions	13.0	37.8	50.8	14.3	77.8	92.1	142.8
Total	663.6	485.7	1,149.2	2,056.7	1,028.0	3,084.7	4,233.9

(a) Comprises never married, widowed and divorced. (b) For reasons other than own temporary illness or injury.

GROSS FLOWS

In order to minimise respondent fatigue and at the same time maintain continuity within the population survey sample, one eighth of the dwellings in the sample (except the large non-private dwellings) are replaced after each survey. Adoption of this rotation procedure, whereby about seven eighths of the sample remains unchanged from one month to the next, enables more reliable measurements of changes in the labour force characteristics of the population to be made than would be possible if a new sample were introduced each month.

Because a high proportion of private dwellings selected in one survey remains in the sample for the following survey, it is possible to match the characteristics of most of the persons in those dwellings from one month to the next, to record any changes that occur, and hence to produce estimates of 'flows' between the different categories of the population and labour force.

The procedures used to select persons in non-private dwellings preclude the possibility of matching any of them who may be included in successive surveys. For this and other reasons, including the mobility of the population and non-response in either or both surveys, about 10 per cent of persons in those dwellings which are included in the sample in successive months cannot be matched. Those who can be matched represent about 80 per cent of all persons in the survey.

Changes in the characteristics of this latter group are shown in Table 35. About one half of the remaining (unmatched) 20 per cent of persons in the survey are likely to have characteristics similar to those in the matched group, but the characteristics of the other half are likely to be somewhat different.

Gross flow estimates shown in the following table relate only to those persons in private dwellings for whom information was obtained in successive surveys. The expansion factors used in calculating the estimates were those applying to the second of each pair of months.

Although it is not possible to provide gross flow estimates for all persons in the survey it is considered that the estimates derived from matched records will be a useful guide to the magnitude of the movements between categories which underlie the changes in monthly levels.

While every effort is made to reduce non-sampling errors to a minimum, any such errors affecting employment status will tend to accumulate in the gross flow statistics rather than to cancel out. The estimates are also subject to sampling variability, as explained in paragraphs 3 to 5 on page 28. For these reasons the estimates of flows should be used with caution. The standard errors may be obtained from Table A on page 29.

TABLE 35. ESTIMATES, DERIVED FROM MATCHED RECORDS, OF EMPLOYMENT STATUS IN JANUARY 1981 AND FEBRUARY 1981, AND GROSS CHANGES (FLOWS) ('000)

Employment status in— January 1981—	February 1981—	Females			Persons
		Males	Married	Total	
Employed full-time	Employed full time	2,787.9	520.8	995.3	3,783.1
	Employed part time	37.7	39.1	59.6	97.3
	Unemployed	23.9	*	7.9	31.8
	Not in the labour force	42.0	23.5	35.5	77.5
Employed part-time	Employed full time	38.5	38.4	54.0	92.5
	Employed part time	85.3	327.2	418.3	503.7
	Unemployed	5.3	4.5	9.5	14.8
	Not in the labour force	24.0	41.9	58.9	82.9
Unemployed	Employed full time	37.0	*	18.5	55.5
	Employed part time	7.0	7.3	15.1	22.1
	Unemployed	106.4	20.5	80.7	187.2
	Not in the labour force	17.7	16.0	31.2	48.9
Not in the labour force	Employed full time	52.3	22.9	37.1	89.4
	Employed part time	17.4	77.4	96.0	113.4
	Unemployed	26.9	32.5	53.0	80.0
	Not in the labour force	749.8	1,502.6	2,164.8	2,914.6
Total flows into	Employed(a)	113.6	111.6	166.7	280.4
	Full time	127.8	65.3	109.6	237.4
	Part time	62.1	123.9	170.7	232.8
	Unemployed	56.1	38.7	70.4	126.6
	Not in the labour force	83.6	81.5	125.7	209.3
Total flows out of	Employed(a)	95.1	71.7	111.9	207.0
	Full time	103.6	64.4	103.0	206.6
	Part time	67.8	84.9	122.4	190.2
	Unemployed	61.6	27.4	64.9	126.5
	Not in the labour force	96.6	132.8	186.1	282.7
Total changes of status		253.4	231.9	362.8	616.2
Population represented by the matched sample		4,059.0	2,680.5	4,135.6	8,194.5

(a) Estimates in this category may be less than the sum of the estimates for employed full-time and employed part-time as the estimates in the latter two categories include movements between those two categories.

NOTE. When comparing figures for different periods, it is important to take into account the population represented by the matched sample, as shown in the last line of the table.

TECHNICAL NOTE

For more information on sample design, estimation procedure and reliability of the estimates, for current and earlier surveys, reference should be made to the technical note in *The Labour Force, Australia, 1978* (6204.0).

Estimation procedures

2. The labour force estimates are derived from the population survey by use of a complex ratio estimation procedure, which ensures that the survey estimates conform to an independently estimated distribution of the population by age and sex, rather than to the age and sex distribution within the sample itself.

Reliability of the estimates

3. Two types of error are possible in an estimate based on a sample survey: sampling error and non-sampling error. The *sampling error* is a measure of the variability that occurs by chance because a sample, rather than the entire population, is surveyed. Since the estimates in this section are based on information obtained from occupants of a sample of dwellings the estimates and the movements derived from them are subject to sampling variability; that is, they may differ from the figures that would have been produced if all dwellings had been included in the surveys. One measure of the likely difference is given by the *standard error*, which indicates the extent to which an estimate might have varied by chance because only a sample of dwellings was included. There are about two chances in three that a sample estimate will differ by less than one standard error from the figure that would have been obtained if all dwellings had been included, and about nineteen chances in twenty that the difference will be less than two standard errors. The standard error can also be expressed as a percentage of the estimate, and this is known as the *relative standard error*.

4. Space does not allow for the separate indication of the standard errors of all estimates in this section. Standard errors of estimates for the latest month and of estimates of movements since the previous month are shown in Table 1. Standard errors of other estimates and other monthly movements for periods from February 1978 should be determined by using Tables A and B on page 29. Standard errors of estimates and movements for periods prior to February 1978 were published in the technical note in *The Labour Force, Australia, 1978* (6204.0).

5. The size of the standard error increases with the level of the estimate, so that the larger the estimate the larger the standard error. However, it should be noted that the larger the sample estimate the smaller will be the standard error in percentage terms. Thus, larger sample estimates will be relatively more reliable than smaller estimates.

6. As the standard errors in Table A show, *the smaller the estimate the higher is the standard error*. Very small estimates are subject to such high standard errors (relative to the size of the estimate) as to detract seriously from their value for most reasonable uses. In the tables in this section, estimates below the levels shown in Table A, and percentages based on such estimates, have not been included. Although figures for these small components can in some cases be derived by subtraction, they should not be regarded as reliable. See paragraph 9 concerning higher cut-off points for some estimates.

7. The movement in the level of an estimate is also subject to sampling variability. The standard error of the movement depends on the levels of the estimates from which the movement is obtained rather than the size of the movement. An indication of the magnitude of standard errors of monthly movements is given in Table B on page 29. The estimates of standard error of monthly movements apply only to estimates of movements between two consecutive months. Movements between corresponding months of consecutive quarters (quarterly movements), corresponding months of consecutive years (annual movements) and two other non-consecutive months, will generally be subject to somewhat greater sampling variability than is indicated in Table B. A guide to the standard errors of quarterly movements for periods from February 1978 can be obtained by multiplying the figures in the table of standard errors of monthly movements (Table B) by 1.4. A guide to the standard errors of annual movements for periods from February 1978 can be obtained by multiplying the figures in the table of standard errors of estimates (Table A) by 1.4.

8. Examples of the calculation and use of standard errors are given below:

- (a) From Table A it will be seen that the estimate of 203,600 unemployed males looking for full-time work in February 1981 has a standard error of about 5,200. Therefore there are about two chances in three that the number that would have been obtained if all dwellings had been included in the survey would have been within the range 198,400 to 208,800 and about nineteen chances in twenty that it would have been within the range 193,200 to 214,000.
- (b) The estimate of movement in the number of unemployed males looking for full-time work from January 1981 to February 1981 is a decrease of 14,600. Table B relates the standard error of the monthly movement to the larger of the two estimates from which the movement is derived. In this case the January 1981 estimate (218,200) is the larger. From Table B it will be seen that the standard error of the monthly movement is about 4,400. Therefore there are about two chances in three that if all dwellings had been included in the surveys the movement would have been within the range -19,000 to -10,200 and about nineteen chances in twenty that it would have been within the range -23,400 to -5,800.

9. The relative standard errors of estimates of *aggregate hours worked*, *average hours worked*, *average duration of unemployment*, and *median duration of unemployment* are obtained by first finding the relative standard error of the estimate of the total number of persons contributing to the estimate (see Table A) and then multiplying the figure so obtained by the following relevant factors.

Aggregate hours worked: 1.2
 Average hours worked: 0.5
 Average duration of unemployment: 1.5
 Median duration of unemployment: 2.0.

Because of these higher relative standard errors, estimates of aggregate hours worked, average duration of unemployment, and median duration of unemployment have higher cut-off points for publication (see paragraph 6) than other estimates as shown in Table A.

POPULATION SURVEY REPORTS

Although emphasis in the population survey is placed on the regular collection of data on demographic and labour force characteristics, supplementary and special surveys of particular aspects of the labour force or of other subjects are carried out from time to time. The results of these surveys are published separately.

<i>Title</i>	<i>Catalogue No.</i>
Supplementary surveys	
Australia	
Alcohol and Tobacco Consumption Patterns, February 1977	4312.0
Annual and Long Service Leave, August 1974; May 1979	6317.0
Assisted and Unassisted Migrants, August 1972; March 1980	3406.0
Attendance at an Educational Institution, March 1980(a)	Not listed
Birth Expectations of Married Women, November 1976; June 1979	3215.0
Child Care Arrangements, Australia, June 1980	4401.0
Child Care—May 1969; May 1973; May 1977	4402.0
Chronic Illnesses, Injuries and Impairments—May 1968; May 1974	4305.0
Employment Status of Teenagers, August 1978(b)	6234.0
Evening and Night Work, November 1976	6329.0
Ex-service Personnel, November 1966; November 1971; October 1979	4403.0
Family Status and Employment Status of the Population, November 1974 and 1975	6223.0
Frequency of Pay—August 1974, 1976 and 1977	6320.0
Health Insurance, March 1979 and 1980	4335.0
Hearing and the Use of Hearing Aids, September 1978	4336.0
Home Ownership and Rental, November 1978	8710.0
Housing Occupancy and Costs, Australia, August 1980 (Advance release)	8724.0
Income Distribution, 1968-69 (Consolidated and Revised Edition)	6505.0
Income Distribution, 1973-74—	
Part 1 (Tables relating to individuals)	6502.0
Part 2 (Tables relating to families)	6503.0
Part 3 (Supplementary Tables)	6504.0
Internal Migration—	
Conducted each year since 1970 (except 1976); Latest issue, 1980	3408.0
Job Tenure—February 1974; February 1975; August 1976	6211.0
Journey to Work and Journey to School—May 1970; August 1974	9205.0
Labour Force Experience—	
During 1968; 1972; 1974; 1975; 1976; 1978; 1979	6206.0
Labour Force Status and Other Characteristics of Families, November 1974; July 1979	6224.0
Labour Mobility—	
November 1972; February 1975, 1976, 1979 and 1980	6209.0
Leavers from Schools, Universities and Other Educational Institutions—	
Conducted each year since 1964. Latest issue, May 1980	6227.0
Migrants in the Labour Force, 1972 to 1976(b)	6230.0
Multiple Jobholding—	
November 1965; August 1966 and 1967; May 1971; August 1973, 1975, 1977 and 1979	6216.0
Non-School Study Courses, Survey of, August 1968	Not listed
Persons Ceasing Full-time Work, Australia, May 1980 (Preliminary)	6237.0
Persons Covered by Hospital and Medical Expenditure Assistance Schemes, August 1972	4303.0
Persons Aged 15 to 64 Years: Employment Status and Period Since Leaving School, May 1976	6225.0
Persons Not in the Labour Force (including Discouraged Jobseekers)—	
November 1975; May 1977; March 1979; September 1979; March 1980	6220.0
September 1980 (Preliminary)	6219.0
Persons Looking for Work—	
May 1976; November 1976; May 1977; July 1978, 1979 and 1980	6222.0
School Leavers, 1970 to 1974: Their Employment Status and Education Experience in May 1975	6226.0
Superannuation, Survey of, February 1974	6319.0
The Labour Force: Country of Birth and Period of Residence, February 1972	6207.0
The Labour Force: Educational Attainment, Australia, February 1979, 1980	6235.0
Trade Union Members, November 1976	6325.0
Weekly Earnings of Employees (Distribution) August 1975 to August 1980 (annually)	6310.0
Work Patterns of Employees, November 1976	6328.0

(a) Results of this survey are contained in the Appendix to the July 1980 issue of this publication. (b) Estimates derived from labour force surveys. For more recent estimates, see the relevant tables in this publication.

POPULATION SURVEY REPORTS—*continued*

<i>Title</i>	<i>Catalogue No.</i>
Supplementary surveys—<i>continued</i>	
States	
Status of Immunity to Diphtheria and Poliomyelitis, Children aged 2 months and under 3 years, and 6 or 7 years, February 1972 (New South Wales)	4304.1
Superannuation, Victoria, May 1968	Not listed
Employed Married Women in the Labour Force, November 1979 (Queensland)	6203.3
Domestic Appliance and Energy Usage, South Australia, April 1979	8207.4
Housing Survey, Victoria, November 1979	8707.2
Housing Intentions of South Australians, November 1979	8705.4
Use of Health Services, South Australia, 1971	4031.4
Post School Qualifications of Tradesmen and Other Employed Persons, New South Wales, November 1979	6202.1
Private Water Bores or Wells (Perth Statistical Division), Western Australia, November 1979	8708.5
Household Energy Sources, Tasmania, August 1975; June 1978; November 1979	8204.6
Special surveys	
Dental Health (persons aged 15 years or more), February-May 1979	4339.0
Educational Experience and Intentions Survey, Australia, 1979 (Preliminary)	4211.0
Employment Benefits, February to May 1979 (Preliminary)	6332.0
Income Distribution, Australia, 1978-79:	
Individuals (Preliminary)	6501.0
Families (Preliminary)	6506.0
Income Units (Preliminary)	6522.0
Sight, Hearing and Dental Health (persons aged 2 to 14 years), February-May 1979	4337.0
Sight Problems and the use of Glasses/Contact Lenses (persons aged 15 years or more), February-May 1979	4338.0
Survey of Persons Registered with the CES as Unemployed, March 1977	6229.0
Unemployed Persons, Income Distribution, Australia, 1978-79	6521.0
Working Conditions, February to May 1979 (Preliminary)	6333.0

2. JOB VACANCIES

Surveys of job vacancies were conducted in March each year from 1974 to 1978 and quarterly, by telephone, from May 1977 to May 1978, after which they were suspended. The quarterly surveys were reintroduced in May 1979. For further details and estimates for earlier periods see *Job Vacancies, Australia, November 1980* (6231.0).

A job vacancy is defined as a job available for immediate filling on the survey date and for which recruitment action has been taken by the employer. Jobs available only to existing employees of an organisation are excluded. In this context the Australian Public Service and the Public Services of the States and the Northern Territory are treated as 'organisations'.

TABLE 36. JOB VACANCIES
(' 000)

AUSTRALIA									
	November 1979	February 1980	May 1980	August 1980	November 1980	February 1981	Standard error		
For males	13.0	15.0	12.5	12.6	13.3	12.6	1.3		
For females	5.0	5.0	3.6	4.3	5.5	6.0	0.9		
For males or females	16.3	16.9	13.7	13.2	15.5	14.4	0.9		
Manufacturing	8.5	11.3	9.1	9.7	9.2	10.4	1.1		
Metal products, machinery and equipment	4.5	6.0	5.4	4.4	4.4	6.1	0.6		
Basic metal and fabricated metal products;									
other machinery, etc.	3.6	5.1	4.6	3.4	3.6	5.0	0.6		
Transport equipment	0.9	0.9	0.8	1.0	0.9	1.1	0.1		
Other manufacturing	4.0	6.1	3.7	5.2	4.7	4.3	0.9		
Other industries	25.9	25.7	20.7	20.4	25.1	22.6	1.6		
Wholesale and retail trade	4.7	5.2	4.0	4.0	4.4	4.1	0.7		
Transport and storage; communication	1.9	2.7	1.6	1.7	1.5	1.2	0.1		
Public administration; community services	11.8	11.2	9.3	9.0	8.6	7.7	0.6		
Other	7.5	6.6	5.8	5.7	10.6	9.5	1.3		
Total	34.3	36.9	29.8	30.1	34.3	33.0	1.9		
STATES AND TERRITORIES									
Month	N.S.W.	Vic.	Qld	S.A.	W.A.	Tas.	N.T.	A.C.T.	Australia
Total—									
1980—									
February	16.2	10.3	3.8	1.6	2.5	(a)1.0	(a)0.7	0.8	36.9
November	15.7	8.5	4.0	1.4	2.3	0.8	0.7	0.7	34.3
1981—									
February	14.5	8.4	3.8	2.1	2.3	0.6	0.5	0.8	33.0
Manufacturing—									
1980—									
February	6.0	3.3	(a)0.4	(a)0.5	(a)0.5	*	*	—	11.2
November	4.0	3.3	(a)0.7	(a)0.7	0.3	*	—	—	9.2
1981—									
February	4.9	2.6	(a)0.8	(a)1.4	(a)0.5	(a)0.1	—	—	10.4
Other industries—									
1980—									
February	10.2	7.0	3.5	1.0	2.0	(a)0.8	0.5	0.8	25.7
November	11.7	5.2	3.3	0.7	2.0	0.7	0.7	0.7	25.1
1981—									
February	9.6	5.8	3.0	0.7	1.8	0.5	0.4	0.8	22.6
Government—									
1980—									
February	6.6	3.8	2.4	0.6	1.0	*	(a)0.3	0.7	15.9
November	4.9	(a)3.5	2.1	(a)0.5	*	(a)0.4	0.4	0.7	13.3
1981—									
February	4.3	—	2.0	—	(a)0.7	0.4	0.3	0.7	11.8
Private—									
1980—									
February	9.6	6.5	1.5	1.0	1.5	(a)0.4	*	(a)0.1	21.0
November	10.8	5.1	1.8	0.9	(a)1.6	(a)0.4	0.3	(a)0.1	21.0
1981—									
February	10.2	(a)5.4	1.8	—	1.7	(a)0.2	0.2	—	21.0

(a) Standard error greater than 20 per cent but less than 30 per cent.