

## KEY FACTS

|                            | Units   | Annual Average |      |
|----------------------------|---------|----------------|------|
|                            |         | 1988           | 1998 |
| <b>CIVILIAN POPULATION</b> |         |                |      |
| Aged 15 and over           | million | 12.8           | 14.8 |

## LABOUR FORCE PARTICIPATION

|                     |   |      |      |
|---------------------|---|------|------|
| Participation rates |   |      |      |
| Males               | % | 75.2 | 73.0 |
| Females             | % | 49.9 | 53.9 |
| Persons             | % | 62.4 | 63.6 |

## EMPLOYMENT

|                             |      |         |         |
|-----------------------------|------|---------|---------|
| Males                       | '000 | 4 423.4 | 4 868.7 |
| Females                     | '000 | 2 974.8 | 3 728.7 |
| Persons                     | '000 | 7 398.3 | 8 597.3 |
| Full-time                   | %    | 80.2    | 74.3    |
| Part-time                   | %    | 19.8    | 25.7    |
| Employment/population ratio | %    | 57.9    | 58.2    |

## UNEMPLOYMENT

|                                      |       |       |       |
|--------------------------------------|-------|-------|-------|
| Unemployed persons                   | '000  | 576.2 | 749.7 |
| Unemployment rate                    |       |       |       |
| Males                                | %     | 6.8   | 8.2   |
| Females                              | %     | 7.9   | 7.7   |
| Persons                              | %     | 7.2   | 8.0   |
| Aged 15–19                           | %     | 17.4  | 20.0  |
| Average duration for August, persons | weeks | 51.3  | 59.7  |

## HOURS OF WORK

|   |       |      |      |
|---|-------|------|------|
| Average weekly hours worked by employed persons | hours | 34.8 | 34.7 |
| Full-time                                       | hours | 39.7 | 41.2 |
| Part-time                                       | hours | 14.7 | 15.6 |
| Average weekly overtime hours per employee      | hours | 1.4  | 1.0  |

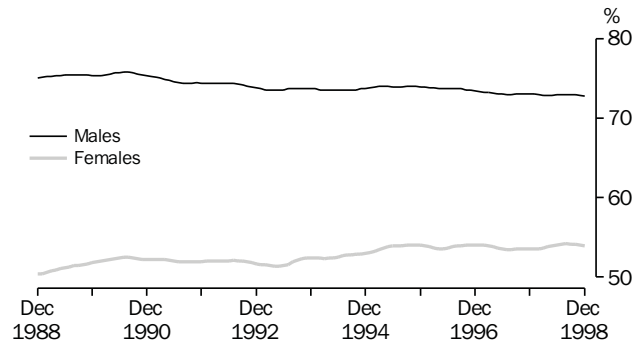
## INDUSTRIAL RELATIONS

|  |      | 12 months ended December |         |
|--|------|--------------------------|---------|
|  |      | 1988                     | 1998    |
| Industrial disputes                      |      |                          |         |
| Working days lost per thousand employees | no.  | 269                      | 72      |
| Working days lost                        | '000 | 1 641.4                  | 524.9   |
|  |      |                          | August  |
|  |      | 1997                     | 1998    |
| Trade union members                      | '000 | 2 110.3                  | 2 037.5 |

## CHANGE IN WAGES AND PRICES

|   | 12 months to Dec Qtr 1998 | 10 years to Dec Qtr 1998 |
|---|---------------------------|--------------------------|
|   | %                         | %                        |
| Average weekly earnings, full-time adults               | 4.2                       | 50.9                     |
| Wage cost index, total hourly rate of pay excl. bonuses | 3.1                       | n.a.                     |
| Consumer price index, all groups                        | 1.6                       | 32.5                     |

### LABOUR FORCE PARTICIPATION RATES: Trend estimates



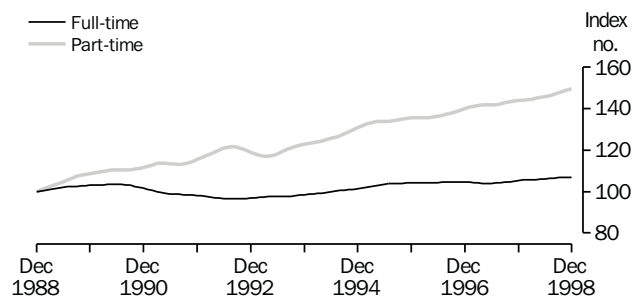
Source: Labour Force, Australia (6203.0).

### EMPLOYED PERSONS: OCCUPATION

|  | Annual Average 1998 |              |
|--|---------------------|--------------|
|  | '000                | %            |
| Managers and administrators                      | 631.3               | 7.4          |
| Professionals                                    | 1 514.1             | 17.7         |
| Associate professionals                          | 882.7               | 10.3         |
| Tradespersons and related workers                | 1 162.2             | 13.6         |
| Advanced clerical and service workers            | 393.7               | 4.6          |
| Intermediate clerical, sales and service workers | 1 451.8             | 17.0         |
| Intermediate production and transport workers    | 780.1               | 9.1          |
| Elementary clerical, sales and service workers   | 880.8               | 10.3         |
| Labourers and related workers                    | 858.1               | 10.0         |
| <b>Total</b>                                     | <b>8554.8</b>       | <b>100.0</b> |

Source: Labour Force, Australia (6203.0).

### FULL-TIME AND PART-TIME EMPLOYMENT INDEX: Trend estimates (December 1988=100)



Source: Labour Force, Australia (6203.0).

### EMPLOYED PERSONS: STATUS IN EMPLOYMENT ('000)

|                             | Annual Average |                |
|-----------------------------|----------------|----------------|
|                             | 1988           | 1998           |
| Employees                   | 6 205.1        | 7 300.0        |
| Own account workers         | 721.1          | 836.2          |
| Employers                   | 373.9          | 356.2          |
| Contributing family workers | 65.8           | 62.4           |
| <b>Total</b>                | <b>7 365.9</b> | <b>8 554.8</b> |

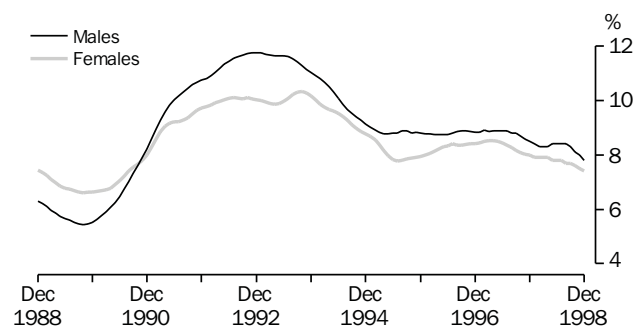
Source: Labour Force, Australia (6203.0).

### EMPLOYED PERSONS: INDUSTRY

|                                       | Annual Average 1998 |              |
|---------------------------------------|---------------------|--------------|
|                                       | '000                | %            |
| Agriculture, forestry and fishing     | 426.4               | 5.0          |
| Mining                                | 84.4                | 1.0          |
| Manufacturing                         | 1 098.5             | 12.8         |
| Electricity, gas and water supply     | 65.2                | 0.8          |
| Construction                          | 622.4               | 7.3          |
| Wholesale trade                       | 508.5               | 5.9          |
| Retail trade                          | 1 265.3             | 14.8         |
| Accommodation, cafes and restaurants  | 408.2               | 4.8          |
| Transport and storage                 | 394.2               | 4.6          |
| Communication services                | 149.6               | 1.7          |
| Finance and insurance                 | 320.5               | 3.7          |
| Property and business services        | 924.7               | 10.8         |
| Government administration and defence | 335.6               | 3.9          |
| Education                             | 593.1               | 6.9          |
| Health and community services         | 811.6               | 9.5          |
| Cultural and recreational services    | 204.0               | 2.4          |
| Personal and other services           | 342.9               | 4.0          |
| <b>Total</b>                          | <b>8 554.8</b>      | <b>100.0</b> |

Source: Labour Force, Australia (6203.0).

### UNEMPLOYMENT RATES: Trend estimates



Source: Labour Force, Australia (6203.0).

### UNEMPLOYED PERSONS BY AGE AND WHETHER LOOKING FOR FULL-TIME OR PART-TIME WORK

| Age group    | Annual Average 1998 ('000) |                            | Total        |
|--------------|----------------------------|----------------------------|--------------|
|              | Looking for full-time work | Looking for part-time work |              |
| Males        |                            |                            |              |
| 15-19        | 49.1                       | 31.0                       | 80.1         |
| 20 and over  | 330.3                      | 26.6                       | 356.8        |
| Total        | 379.4                      | 57.5                       | 436.9        |
| Females      |                            |                            |              |
| 15-19        | 35.6                       | 35.7                       | 71.3         |
| 20 and over  | 173.3                      | 68.1                       | 241.5        |
| Total        | 208.9                      | 103.8                      | 312.8        |
| Persons      |                            |                            |              |
| 15-19        | 84.7                       | 66.6                       | 151.4        |
| 20 and over  | 503.6                      | 94.8                       | 598.3        |
| <b>Total</b> | <b>588.3</b>               | <b>161.4</b>               | <b>749.7</b> |

Source: Labour Force, Australia (6203.0).

### UNEMPLOYED PERSONS: DURATION OF UNEMPLOYMENT ('000)

| Duration of unemployment (weeks)   | Annual Average |              |
|------------------------------------|----------------|--------------|
|                                    | 1988           | 1998         |
| Under 52                           | 416.2          | 509.3        |
| Less than 4                        | 116.3          | 126.5        |
| 4 and under 13                     | 135.6          | 158.9        |
| 13 and under 52                    | 164.4          | 223.9        |
| 52 and over (long-term unemployed) | 160.0          | 240.4        |
| <b>Total</b>                       | <b>576.2</b>   | <b>749.7</b> |

Source: Labour Force, Australia (6203.0).

### EDUCATIONAL ATTAINMENT OF PERSONS AGED 15 TO 64 WHO WERE EMPLOYED IN MAY 1998

|  | '000           | %            |
|--|----------------|--------------|
| With post-school qualifications          | 4 210.3        | 50.0         |
| Without post-school qualifications(a)    | 4 017.7        | 47.7         |
| Completed highest level of school        | 1 566.6        | 18.6         |
| Did not complete highest level of school | 2 446.9        | 29.0         |
| Still attending school                   | 196.6          | 2.3          |
| <b>Total</b>                             | <b>8 424.5</b> | <b>100.0</b> |

(a) Includes persons who never attended school.

Source: Transition from Education to Work, Australia (6227.0).

## **For inquiries . . .**

**DIAL-A-STATISTIC** For current and historical Consumer Price Index data, call 1902 981 074.  
For the latest figures for National Accounts, Balance of Payments, Labour Force, Average Weekly Earnings, Estimated Resident Population and the Consumer Price Index, call 1900 986 400. These calls cost 75c per minute.

**INTERNET** <http://www.abs.gov.au>

**LIBRARY** A range of ABS publications is available from public and tertiary libraries Australia-wide. Contact your nearest library to determine whether it has the ABS statistics you require.

## **Why not subscribe?**

*By phone* +61 1300 366 323

*By fax* +61 3 9615 7848

## **Consultancy services**

ABS offers consultancy services on a user pays basis to help you access published and unpublished data. Data already published and which can be provided within five minutes are free of charge. Statistical methodological services are also available. Please contact:

| <i>City</i> | <i>By phone</i> | <i>By fax</i> |
|-------------|-----------------|---------------|
| Canberra    | 02 6252 6627    | 02 6207 0282  |
| Sydney      | 02 9268 4611    | 02 9268 4668  |
| Melbourne   | 03 9615 7755    | 03 9615 7798  |
| Brisbane    | 07 3222 6351    | 07 3222 6283  |
| Perth       | 08 9360 5140    | 08 9360 5955  |
| Adelaide    | 08 8237 7100    | 08 8237 7566  |
| Hobart      | 03 6222 5800    | 03 6222 5995  |
| Darwin      | 08 8943 2111    | 08 8981 1218  |

*Post* Client Services, ABS, PO Box 10, Belconnen ACT 2616

*Email* [client.services@abs.gov.au](mailto:client.services@abs.gov.au)

Produced by the Australian Bureau of Statistics  
© Commonwealth of Australia 1999

**Recommended retail price: \$1.10**

### WAGE AND SALARY EARNERS: PRIVATE AND PUBLIC SECTORS

|                 | '000           | August 1998<br>% |
|-----------------|----------------|------------------|
| Private(a)      | 5 592.7        | 79.2             |
| Public          |                |                  |
| Commonwealth    | 255.2          | 3.6              |
| State           | 1 069.7        | 15.2             |
| Local           | 139.9          | 2.0              |
| Total           | 1 464.8        | 20.8             |
| <b>Total(a)</b> | <b>7 057.5</b> | <b>100.0</b>     |

(a) Excludes private sector employees in Agriculture, forestry and fishing.

Source: *Wage and Salary Earners, Australia* (6248.0).

### AVERAGE WEEKLY TOTAL EARNINGS (\$)

|                  | Nov 1997 | Nov 1998 |
|------------------|----------|----------|
| Full-time adults |          |          |
| Males            | 815.5    | 848.6    |
| Females          | 648.3    | 676.7    |
| Persons          | 753.2    | 784.9    |

Source: *Average Weekly Earnings, States and Australia* (6302.0).

### LABOUR COSTS PER EMPLOYEE (\$)

|                           | 1993-94       | 1996-97       |
|---------------------------|---------------|---------------|
| Earnings                  | 28 530        | 30 870        |
| Other labour costs        | 3 729         | 4 565         |
| Superannuation            | 1 800         | 2 291         |
| Payroll tax               | 1 104         | 1 160         |
| Workers' compensation     | 588           | 719           |
| Fringe benefits tax       | 237           | 395           |
| <b>Total labour costs</b> | <b>32 259</b> | <b>35 435</b> |

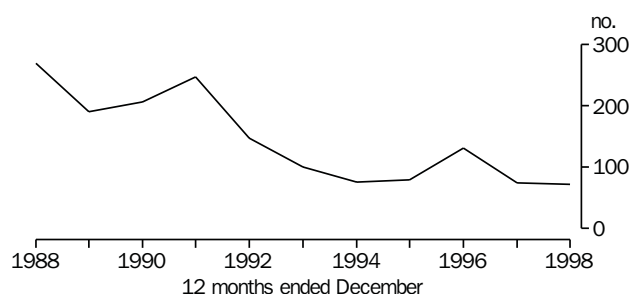
Source: *Labour Costs, Australia* (6348.0).

### JOB VACANCIES: INDUSTRY ('000)

|   | 21 Nov.<br>1997 | 20 Nov.<br>1998 |
|---|-----------------|-----------------|
| Manufacturing   | 6.6             | 7.3             |
| Wholesale trade; Retail trade                         | 14.9            | 14.6            |
| Accommodation, cafes and restaurants                  | 6.0             | 9.4             |
| Finance and insurance; Property and business services | 18.4            | 17.0            |
| Education; Health and community services              | 8.6             | 10.0            |
| Other   | 13.6            | 19.1            |
| <b>Total all industries</b>                           | <b>68.1</b>     | <b>77.4</b>     |

Source: *Job Vacancies and Overtime, Australia* (6354.0).

### INDUSTRIAL DISPUTES: WORKING DAYS LOST PER THOUSAND EMPLOYEES



Source: *Industrial Disputes, Australia* (6321.0).

### INTERNATIONAL COMPARISONS: SELECTED CHARACTERISTICS

|                          | Population<br>1997 | Participation<br>rate<br>Annual<br>average(a)<br>1997 | Unemployment<br>rate<br>Standardised(a)<br>1997 |
|--------------------------|--------------------|---|---|
|                          | million            | %   | %   |
| Australia                | 18.5               | 63.3  | 8.7   |
| Canada                   | 30.3               | 64.8  | 9.2   |
| France                   | 58.6               | 55.0  | 12.4  |
| Germany                  | 82.1               | 57.4  | 10.0  |
| Japan                    | 126.2              | 63.7  | 3.4   |
| Sweden                   | 8.8                | 76.8  | 9.9   |
| United Kingdom           | 58.1               | 62.6  | 7.0   |
| United States of America | 266.8              | 67.1  | 4.9   |

(a) ILO/OECD definition

Source: *Main Economic Indicators, January 1999, OECD Statistics; Yearbook of Labour Statistics, 1998, International Labour Office, Geneva.*

### SYMBOLS AND ABBREVIATIONS USED

Annual periods shown as, for example, 1997 refer to the year ended 31 December 1997; those shown as, for example 1997-98 refer to the year ended June 1998. Values shown in Australian dollars (\$). Where figures have been rounded, discrepancies may occur between the sums of the component items and totals.

**Qtr.** — quarter    **n.a.** — not available    **no.** — number  
**Nov** — November    **%** — per cent    **'000** — thousand  
**Dec** — December    **\$** — dollars    **=** — equals  
**OECD** — Organisation for Economic Co-operation & Development  
**ILO** — International Labour Office

### ACKNOWLEDGMENTS

ABS publications draw extensively on information provided freely by individuals, businesses, governments and other organisations. Their continued cooperation is very much appreciated; without it the wide range of statistics published by the ABS would not be available for general use by the community. Information received by the ABS is treated in strict confidence as required by the *Census and Statistics Act 1905*.