

CHAPTER 4

UNEMPLOYMENT

The unemployment statistics presented in this chapter have been derived from ABS sources, primarily the ABS Monthly Labour Force Survey and associated supplementary surveys. Some summary statistics on job vacancies, which are an indicator of the demand for labour, are also included in this chapter.

For a full definition of unemployment as it relates to the Labour Force Survey, see the Glossary of this publication. Broadly speaking, a person is considered to be unemployed if he or she satisfies three criteria—not employed, available for work, and taking active steps to find work. The employed and the unemployed together make up the labour force.

Measures of unemployment provide an indicator of the unused capacity in the labour force. The two most important measures are the number of unemployed persons and the unemployment rate. The unemployment rate for any group is the number unemployed expressed as a percentage of the labour force in the same group. Characteristics of the unemployed presented in this chapter include their demographic composition, duration of unemployment, educational qualifications and difficulties experienced in finding work. The unemployment characteristics of families, i.e. unemployment rates of different family members and number of families with some unemployment are also shown.

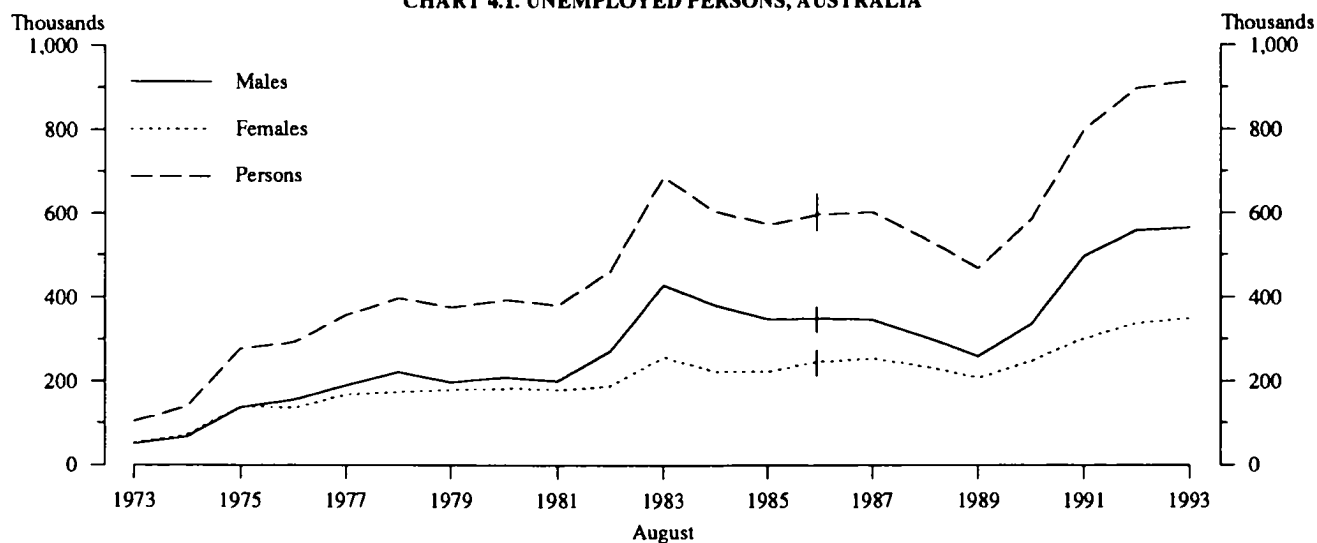
Unemployment

There were 916,000 unemployed persons in Australia in August 1993, of whom 564,500 were males and 351,600 were females. About 85 per cent of unemployed persons were looking for full-time work. Between August 1983 and August 1990, the estimated number of unemployed persons fell by 102,200. Between August 1990 and August 1993, the number of unemployed persons rose by 331,400.

The unemployment rate for persons generally fell between August 1983 and August 1989, decreasing from 9.9 per cent to 5.7 per cent. It then increased over the next four years to 10.7 per cent in August 1993. In August 1993 the unemployment rate for males aged 15 to 19 years was 24.0 per cent, while for females aged 15 to 19 years the unemployment rate was 21.9 per cent.

The average duration of unemployment rose from 41.4 weeks in August 1983 to a peak of 51.3 weeks in August 1988 before falling to 43.0 weeks in August 1991. The average then increased to 51.2 weeks in August 1992 and was followed by a further increase to 59.1 weeks in August 1993.

CHART 4.1. UNEMPLOYED PERSONS, AUSTRALIA



Indicates break in series. Estimates from August 1986 are based on a revised definition introduced in April 1986. See the Technical Notes for further information.
 Source: *The Labour Force, Australia* (6203.0).

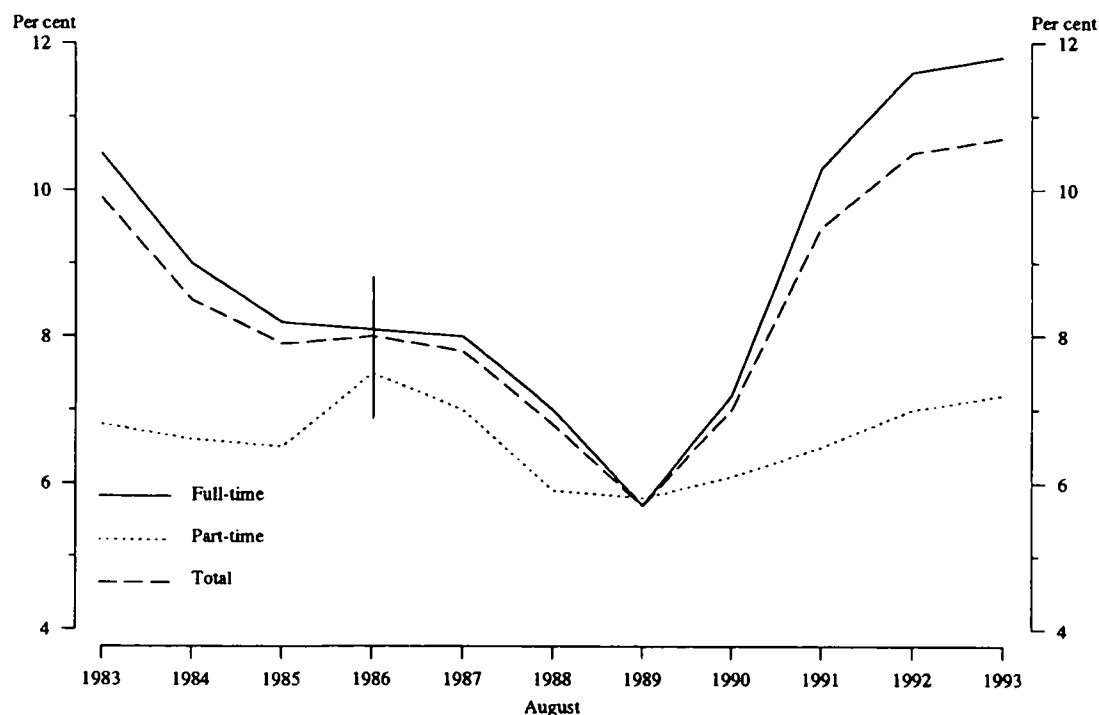
TABLE 4.1. UNEMPLOYED PERSONS: WHETHER LOOKING FOR FULL-TIME OR PART-TIME WORK, AUSTRALIA, AUGUST 1983 TO AUGUST 1993

August	Males		Females			Persons			Total
	Looking for full-time work	Looking for part-time work	Total	Looking for full-time work	Looking for part-time work	Total	Looking for full-time work	Looking for part-time work	
NUMBER ('000)									
1983	409.5	20.2	429.7	197.9	59.3	257.1	607.4	79.5	686.8
1984	358.6	22.6	381.2	165.0	57.9	222.8	523.5	80.5	604.0
1985	325.4	23.7	349.1	162.7	60.9	223.6	488.0	84.7	572.7
1986(a)	320.9	28.3	349.3	170.9	77.5	248.4	491.8	105.8	597.6
1987	317.2	29.8	347.1	177.8	77.1	255.0	495.1	107.0	602.0
1988	279.9	25.8	305.7	165.5	67.4	233.0	445.4	93.3	538.7
1989 r	229.9	29.9	259.7	139.2	69.5	208.6	369.0	99.3	468.3
1990 r	303.3	32.7	336.0	172.4	76.1	248.6	475.7	108.8	584.6
1991 r	459.9	37.2	497.0	220.0	81.7	301.7	679.8	118.9	798.7
1992 r	514.9	43.5	558.4	242.7	97.1	339.9	757.6	140.7	898.3
1993	518.5	46.0	564.5	255.9	95.6	351.6	774.4	141.6	916.0
UNEMPLOYMENT RATE (per cent)									
1983	10.1	7.7	9.9	11.7	6.5	9.9	10.5	6.8	9.9
1984	8.7	8.4	8.7	9.6	6.0	8.3	9.0	6.6	8.5
1985	7.8	8.5	7.8	9.2	6.0	8.0	8.2	6.5	7.9
1986(a)	7.6	9.2	7.7	9.2	7.0	8.4	8.1	7.5	8.0
1987	7.4	8.6	7.5	9.4	6.5	8.3	8.0	7.0	7.8
1988	6.4	7.8	6.5	8.4	5.4	7.3	7.0	5.9	6.8
1989 r	5.2	7.8	5.4	6.8	5.2	6.2	5.7	5.8	5.7
1990 r	6.7	8.2	6.9	8.1	5.5	7.1	7.2	6.1	7.0
1991 r	10.3	8.4	10.1	10.3	5.8	8.6	10.3	6.5	9.5
1992 r	11.6	8.5	11.3	11.7	6.5	9.5	11.6	7.0	10.5
1993	11.6	9.3	11.4	12.1	6.5	9.8	11.8	7.2	10.7

(a) Estimates from August 1986 are based on a revised definition introduced in April 1986. See the Technical Notes for further information.

Source: *The Labour Force, Australia (6203.0)*.

CHART 4.2 UNEMPLOYMENT RATES: WHETHER LOOKING FOR FULL-TIME OR PART-TIME WORK, AUSTRALIA



Indicates a break in series. Estimates from August 1986 are based on a revised definition introduced in April 1986. See the Technical Notes for further information.

Source: *The Labour Force, Australia (6203.0)*.

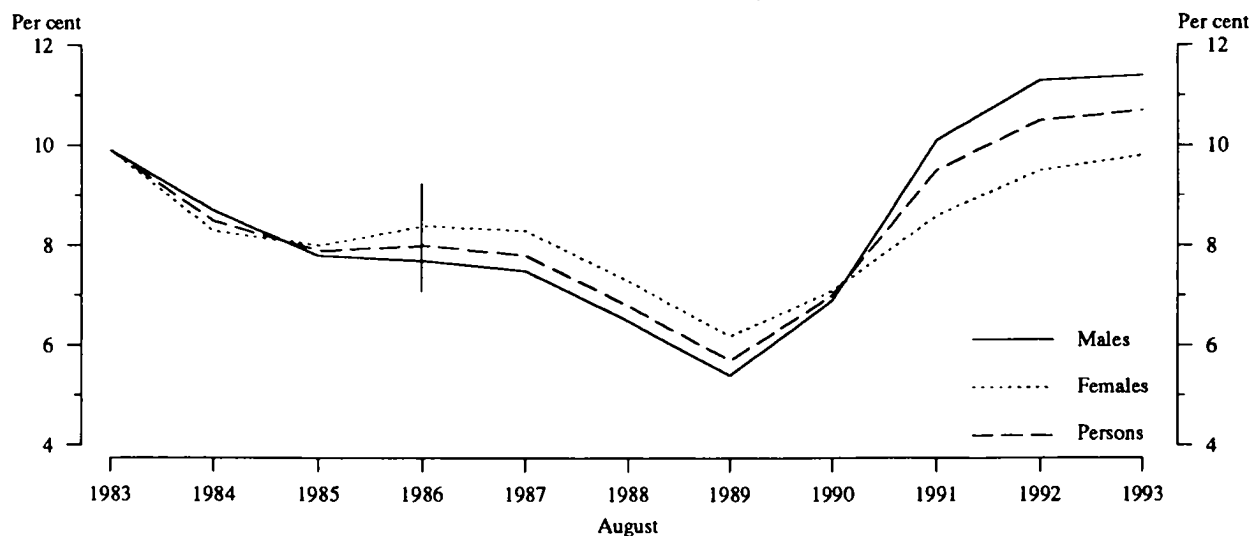
TABLE 4.2. UNEMPLOYED PERSONS: UNEMPLOYMENT RATES, BY AGE, AUSTRALIA, AUGUST 1983 TO AUGUST 1993
(per cent)

August	Age group						Total
	15-19	20-24	25-34	35-44	45-54	55 and over	
MALES							
1983	23.0	17.3	9.1	6.0	5.9	6.5	9.9
1984	22.1	14.2	7.6	5.0	5.7	5.8	8.7
1985	19.3	12.4	7.2	4.4	4.8	6.7	7.8
1986(a)	18.7	12.3	6.8	4.6	5.5	5.5	7.7
1987	18.0	12.6	7.0	4.8	4.2	5.5	7.5
1988	15.1	10.8	5.6	3.8	4.5	6.3	6.5
1989 r	12.9	8.0	5.1	3.5	3.0	5.1	5.4
1990 r	16.6	12.1	7.0	3.8	3.3	5.7	6.9
1991 r	21.7	16.3	9.8	7.4	6.0	8.9	10.1
1992 r	25.2	18.3	10.7	7.5	7.2	10.6	11.3
1993	24.0	18.1	11.0	7.9	7.3	12.0	11.4
FEMALES							
1983	22.2	11.5	9.5	6.8	4.8	2.5	9.9
1984	19.7	10.3	7.1	5.6	4.6	2.6	8.3
1985	17.1	10.4	7.5	5.3	4.4	2.7	8.0
1986(a)	19.5	9.9	7.6	6.0	4.5	3.1	8.4
1987	19.4	10.5	7.5	6.1	4.5	2.2	8.3
1988	15.9	10.9	6.6	4.8	3.9	2.7	7.3
1989 r	14.6	7.9	5.8	3.9	4.1	2.4	6.2
1990 r	16.3	9.5	7.1	4.7	4.0	2.8	7.1
1991 r	20.1	12.7	7.7	5.5	5.7	3.9	8.6
1992 r	24.7	13.6	8.6	6.5	5.8	2.6	9.5
1993	21.9	13.7	9.1	7.6	6.5	4.8	9.8
PERSONS							
1983	22.6	14.7	9.2	6.3	5.5	5.5	9.9
1984	20.9	12.5	7.4	5.3	5.3	5.0	8.5
1985	18.2	11.5	7.3	4.7	4.7	5.7	7.9
1986(a)	19.1	11.2	7.1	5.2	5.1	4.9	8.0
1987	18.7	11.6	7.2	5.3	4.3	4.6	7.8
1988	15.5	10.9	6.0	4.2	4.2	5.3	6.8
1989 r	13.7	7.9	5.4	3.7	3.4	4.4	5.7
1990 r	16.5	10.9	7.1	4.2	3.5	4.9	7.0
1991 r	21.0	14.6	9.0	6.6	5.9	7.5	9.5
1992 r	25.0	16.1	9.8	7.1	6.7	8.4	10.5
1993	23.0	16.1	10.2	7.8	6.9	9.9	10.7

(a) Estimates from August 1986 are based on a revised definition introduced in April 1986. See the Technical Notes for further information.

Source: *The Labour Force, Australia* (6203.0).

CHART 4.3. UNEMPLOYMENT RATES, AUSTRALIA



Indicates break in series. Estimates from August 1986 are based on a revised definition introduced in April 1986. See the Technical Notes for further information.

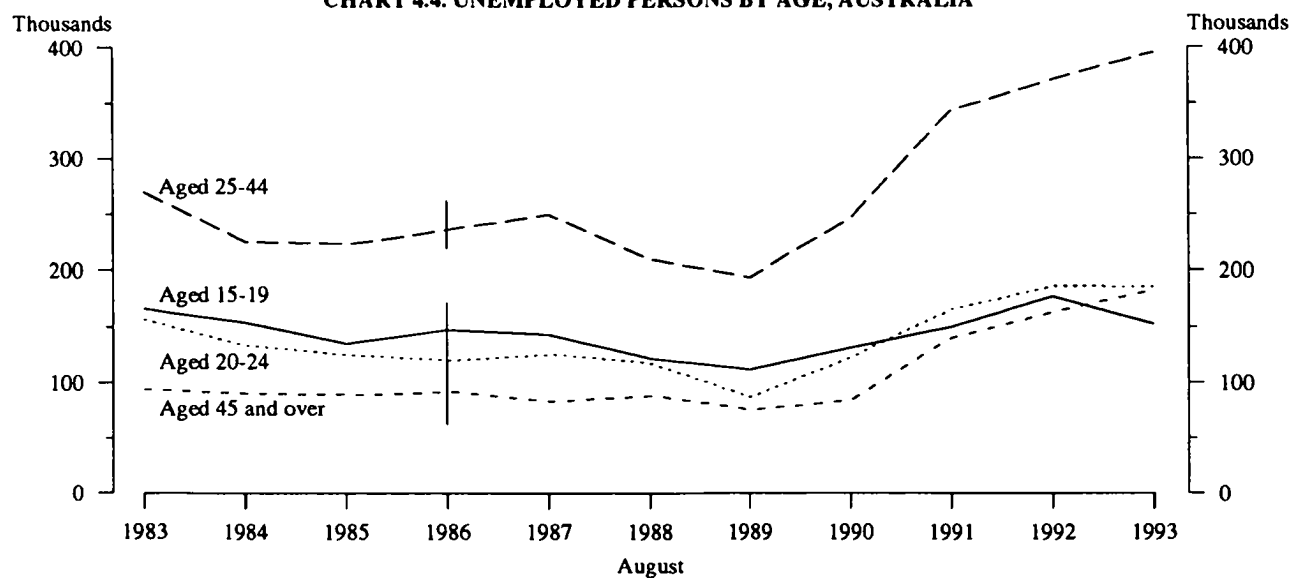
Source: *The Labour Force, Australia* (6203.0).

TABLE 4.3. UNEMPLOYED PERSONS: BIRTHPLACE BY AGE, AUSTRALIA, AUGUST 1993

	Number unemployed ('000)			Unemployment rate (per cent)		
	Males	Females	Persons	Males	Females	Persons
BORN IN AUSTRALIA						
Total	391.3	245.7	637.1	10.7	9.0	9.9
Looking for full-time work	357.3	178.6	535.9	10.8	11.3	11.0
Looking for part-time work	34.0	67.1	101.2	8.9	5.8	6.6
Aged 15-19	74.3	60.5	134.8	23.3	20.9	22.2
Aged 20 and over	317.1	185.2	502.3	9.4	7.6	8.6
20-24	94.7	59.6	154.3	17.7	12.8	15.4
25-34	99.7	54.4	154.1	10.0	7.8	9.1
35-44	54.6	42.0	96.6	6.2	6.3	6.2
45-54	35.4	23.3	58.7	5.9	5.1	5.5
55 and over	32.7	5.9	38.6	9.8	3.8	7.9
Aged 15-64	391.3	245.7	637.1	10.8	9.0	10.1
BORN OUTSIDE AUSTRALIA						
Total	173.1	105.8	278.9	13.6	12.5	13.2
Looking for full-time work	161.2	77.3	238.5	13.9	14.4	14.1
Looking for part-time work	11.9	28.5	40.4	10.4	9.1	9.5
Aged 15-19	9.1	8.7	17.8	30.7	33.7	32.1
Aged 20 and over	164.0	97.1	261.1	13.2	11.8	12.6
20-24	17.1	13.8	30.9	20.8	20.4	20.6
25-34	43.0	29.8	72.7	14.3	13.5	14.0
35-44	42.9	29.2	72.2	12.1	11.0	11.6
45-54	32.3	19.7	52.1	9.8	9.6	9.7
55 and over	28.7	4.6	33.3	16.2	7.3	13.9
Aged 15-64	172.0	105.8	277.8	13.7	12.5	13.2
TOTAL						
Total	564.5	351.6	916.0	11.4	9.8	10.7
Looking for full-time work	518.5	255.9	774.4	11.6	12.1	11.8
Looking for part-time work	46.0	95.6	141.6	9.3	6.5	7.2
Aged 15-19	83.4	69.2	152.6	24.0	21.9	23.0
Aged 20 and over	481.1	282.4	763.4	10.5	8.6	9.7
20-24	111.8	73.4	185.2	18.1	13.7	16.1
25-34	142.6	84.2	226.8	11.0	9.1	10.2
35-44	97.6	71.2	168.8	7.9	7.6	7.8
45-54	67.7	43.1	110.8	7.3	6.5	6.9
55 and over	61.3	10.5	71.8	12.0	4.8	9.9
Aged 15-64	563.4	351.6	914.9	11.6	9.9	10.8

Source: *The Labour Force, Australia* (6203.0).

CHART 4.4. UNEMPLOYED PERSONS BY AGE, AUSTRALIA



Indicates break in series. Estimates from August 1986 are based on a revised definition introduced in April 1986. See the Technical Notes for further information.

Source: *The Labour Force, Australia* (6203.0).

TABLE 4.4. UNEMPLOYED PERSONS: DURATION OF UNEMPLOYMENT, AUSTRALIA, AUGUST 1983 TO AUGUST 1993

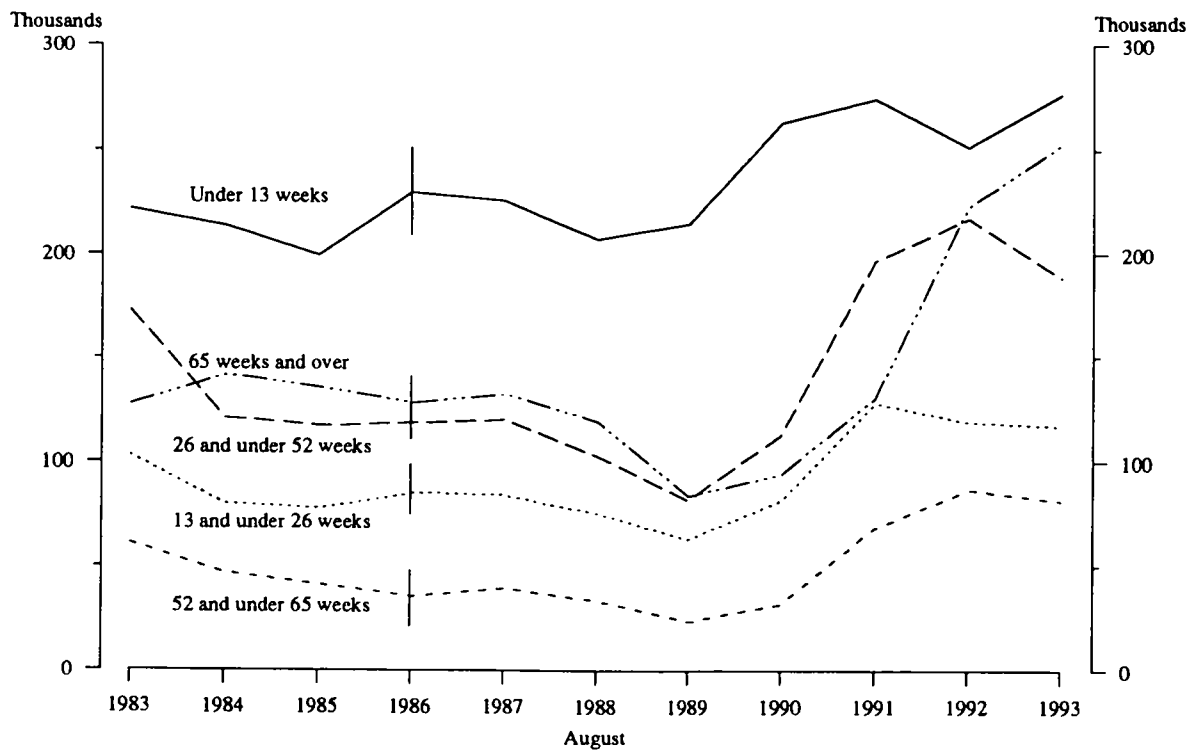
Duration of unemployment (weeks)	August										
	1983	1984	1985	1986(a)	1987	1988	1989 r	1990 r	1991 r	1992 r	1993
	—'000—										
Under 52	498.1	415.5	395.6	433.8	430.0	385.8	360.3	458.0	599.4	588.2	581.5
Under 2	32.4	34.2	38.8	47.3	41.7	41.3	47.4	40.4	39.4	44.3	46.7
2 and under 4	49.7	56.8	55.6	56.7	59.6	54.9	54.7	67.9	66.5	57.8	66.5
4 and under 8	73.9	64.0	57.6	67.3	67.9	60.6	68.0	87.6	86.6	82.2	93.4
8 and under 13	65.9	58.8	47.6	58.4	56.4	50.6	44.5	67.1	81.8	67.3	69.7
13 and under 26	103.1	80.5	78.2	85.3	84.2	75.7	63.4	82.0	128.0	119.1	116.8
26 and under 39	123.5	94.9	87.9	91.3	94.6	78.3	62.3	88.9	143.5	153.9	140.4
39 and under 52	49.6	26.2	29.7	27.6	25.5	24.4	19.9	24.3	53.8	63.6	48.1
52 and over (long-term unemployed)	188.7	188.6	177.1	163.8	172.0	152.9	108.0	126.6	199.3	310.1	334.5
52 and under 65	61.3	46.9	41.3	35.7	39.6	33.6	23.6	32.1	68.7	86.9	81.7
65 and under 104	43.3	49.2	30.7	32.1	36.7	29.7	19.3	24.4	49.2	89.5	74.5
104 and over	84.2	92.4	105.1	96.1	95.7	89.6	65.1	70.1	81.4	133.7	178.3
Total	686.8	604.0	572.7	597.6	602.0	538.7	468.3	584.6	798.7	898.3	916.0
	—weeks—										
Average duration	41.4	45.5	49.5	48.6	48.3	51.3	44.5	43.7	43.0	51.2	57.1
Median duration	26	26	26	21	23	22	14	15	24	30	30

(a) Estimates from August 1986 are based on a revised definition introduced in April 1986. See the Technical Notes for further information.

Note: Estimates for average and median durations of unemployment refer to current period of unemployment, not completed periods. See the Glossary for further information.

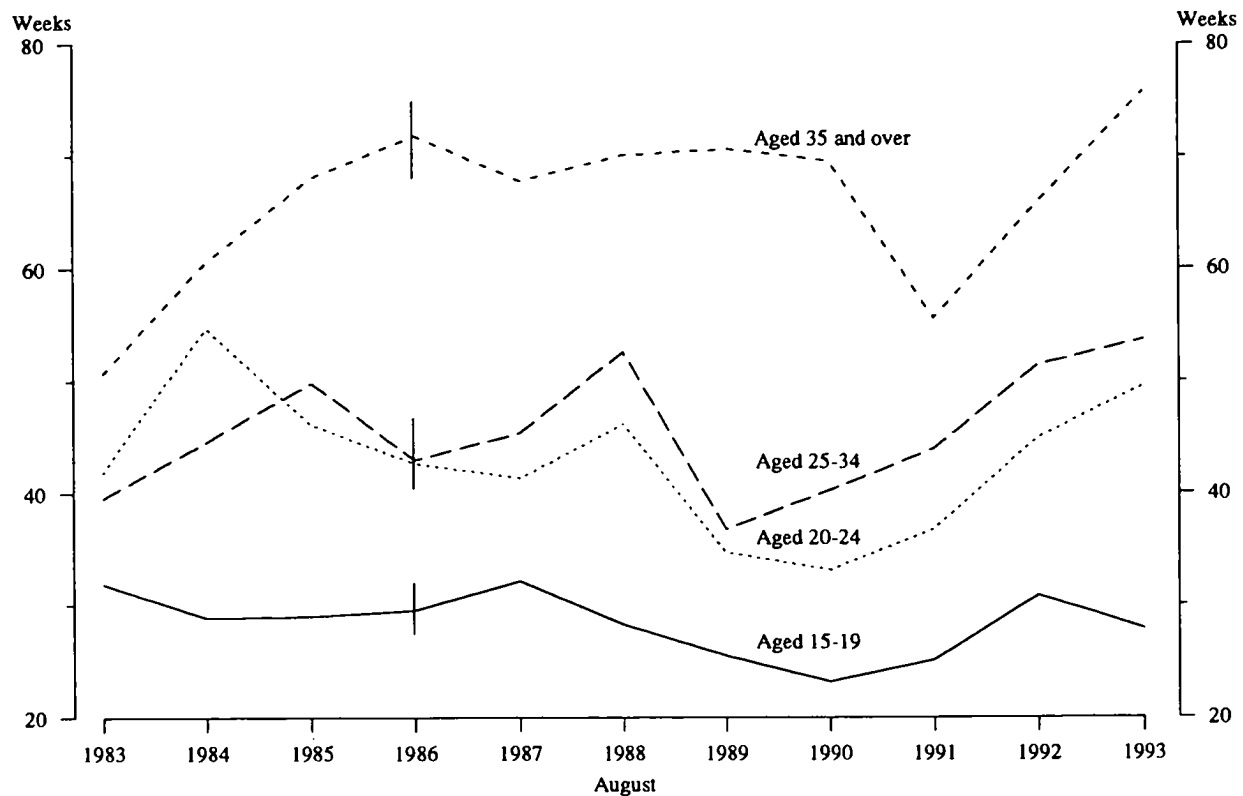
Source: *The Labour Force, Australia* (6203.0).

CHART 4.5. UNEMPLOYED PERSONS: DURATION OF UNEMPLOYMENT, AUSTRALIA



Indicates break in series. Estimates from August 1986 are based on a revised definition introduced in April 1986. See the Technical Notes for further information.
Source: *The Labour Force, Australia* (6203.0).

CHART 4.6. UNEMPLOYED PERSONS: AVERAGE DURATION OF UNEMPLOYMENT AND AGE, AUSTRALIA



Indicates break in series. Estimates from August 1986 are based on a revised definition introduced in April 1986. See the Technical Notes for more information.

Note: Estimates for average duration of unemployment refer to current periods of unemployment, not completed periods. See the glossary for further information.

Source: *The Labour Force, Australia (6203.0)*.

TABLE 4.5. UNEMPLOYED PERSONS: DURATION OF UNEMPLOYMENT, AGE, MARITAL STATUS AND WHETHER LOOKING FOR FULL-TIME OR PART-TIME WORK, AUSTRALIA, AUGUST 1993

Duration of unemployment (weeks)	Age group				Total(a)	Married	Not married	Looking for—	
	15-19	20-24	25-34	35-54				Full-time work	Part-time work
	—'000—								
Under 52	126.6	118.3	148.3	158.6	581.6	221.5	360.0	468.4	113.3
under 2	11.9	9.6	12.4	10.6	46.7	16.7	29.9	28.8	17.9
2 and under 4	13.0	15.8	17.7	17.5	66.5	28.9	37.6	43.4	23.1
4 and under 8	20.6	18.0	24.8	25.6	93.4	37.3	56.1	76.9	16.6
8 and under 13	14.4	13.4	16.7	22.2	69.7	26.8	42.9	57.0	12.7
13 and under 26	21.2	28.6	30.3	29.7	116.8	45.8	71.0	100.5	16.3
26 and under 39	38.9	23.9	31.0	38.2	140.4	47.2	93.2	116.0	24.4
39 and under 52	6.6	9.0	15.4	14.8	48.1	18.8	29.3	45.8	2.3
52 and over (long-term unemployed)	26.1	66.9	78.5	121.0	334.5	157.2	177.2	306.0	28.5
52 and under 65	11.1	19.0	20.5	25.4	81.7	36.5	45.2	71.8	9.9
65 and under 104	9.3	18.2	13.9	24.8	74.5	30.4	44.1	70.2	4.3
104 and over	5.7	29.7	44.1	70.8	178.3	90.3	87.9	164.0	14.3
Total	152.6	185.2	226.8	279.6	916.0	378.8	537.2	774.4	141.6
	—weeks—								
Average duration	27.8	49.2	53.5	69.8	57.1	65.4	51.2	61.1	34.8
Median duration	21	27	28	35	30	32	28	33	13

(a) Includes persons aged 55 and over, details for whom are not shown separately.

Source: *The Labour Force, Australia (6203.0)*.

TABLE 4.6. UNEMPLOYED PERSONS: REASON FOR UNEMPLOYMENT, AUSTRALIA

Month	Reason for unemployment					Total	Per cent of unemployed				
	Job loser	Job leaver	Stood down	Looking for first job	Former workers		Job loser	Job leaver	Stood down	Looking for first job	Former workers
—'000—											
—per cent—											
1991—											
August r	377.3	130.1	21.0	110.5	159.8	798.7	47.2	16.3	2.6	13.8	20.0
1992—											
August r	364.7	118.0	19.2	163.5	232.9	898.3	40.6	13.1	2.1	18.2	25.9
September r	375.9	114.6	29.5	158.7	238.4	917.2	41.0	12.5	3.2	17.3	26.0
October r	348.2	120.3	24.5	153.4	247.4	893.7	39.0	13.5	2.7	17.2	27.7
November r	328.2	122.3	21.0	156.9	257.8	886.1	37.0	13.8	2.4	17.7	29.1
December r	354.4	119.3	17.4	209.9	279.0	979.9	36.2	12.2	1.8	21.4	28.5
1993—											
January	375.5	117.8	21.2	214.3	280.9	1,009.7	37.2	11.7	2.1	21.2	27.8
February	384.9	127.6	15.4	209.6	306.3	1,043.8	36.9	12.2	1.5	20.1	29.3
March	341.7	122.4	17.0	185.5	313.3	979.8	34.9	12.5	1.7	18.9	32.0
April	343.7	113.3	23.0	156.9	284.7	921.6	37.3	12.3	2.5	17.0	30.9
May	345.5	114.6	15.3	151.2	296.8	923.5	37.4	12.4	1.7	16.4	32.1
June	346.3	119.7	20.8	143.9	283.9	914.5	37.9	13.1	2.3	15.7	31.0
July	329.0	112.1	25.3	135.7	289.5	891.7	36.9	12.6	2.8	15.2	32.5
August	334.0	115.6	15.3	149.1	302.0	916.0	36.5	12.6	1.7	16.3	33.0

Source: The Labour Force, Australia (6203.0).

TABLE 4.7. UNEMPLOYED PERSONS: INDUSTRY AND OCCUPATION OF LAST FULL-TIME JOB, AUSTRALIA
AUGUST 1993

	Number unemployed ('000)			Unemployment rate (per cent)		
	Males	Females	Persons	Males	Females	Persons
Had worked full time for two weeks or more in the last two years	321.9	127.7	449.5	6.8	3.8	5.6
Industry division or subdivision —						
Agriculture, forestry, fishing and hunting	21.8	* 3.4	25.2	7.1	* 2.8	5.8
Agriculture and services to agriculture	18.9	* 3.2	22.1	6.6	* 2.7	5.5
Forestry and logging, fishing and hunting	* 2.9	* 0.2	* 3.1	* 12.9	* 4.5	* 11.2
Mining	3.9	* 0.5	4.4	4.5	* 6.8	4.6
Manufacturing	71.0	20.2	91.2	8.3	6.5	7.8
Food, beverages and tobacco	13.2	4.2	17.4	10.1	6.2	8.7
Metal products	9.6	* 1.4	11.0	5.7	* 6.3	5.8
Other manufacturing	48.2	14.6	62.8	8.6	6.6	8.1
Electricity, gas and water	3.7	* 0.1	3.9	4.4	* 1.1	3.9
Construction	47.8	* 2.0	49.8	9.2	* 2.4	8.2
Wholesale and retail trade	69.8	32.6	102.4	7.4	4.4	6.0
Wholesale trade	21.0	4.6	25.6	6.0	2.8	5.0
Retail trade	48.8	28.0	76.7	8.2	4.8	6.5
Transport and storage	21.1	3.8	24.8	6.8	4.8	6.4
Communication	4.1	* 2.3	6.4	5.0	* 6.0	5.3
Finance, property and business services	21.7	11.3	32.9	4.7	2.7	3.7
Public administration and defence	10.4	5.4	15.9	4.4	3.2	3.9
Community services	15.0	23.4	38.4	3.0	2.3	2.5
Recreation, personal and other services	31.6	22.7	54.4	10.5	6.3	8.2
Occupation group —						
Managers and administrators	14.6	4.2	18.9	2.2	1.9	2.1
Professionals	15.0	10.6	25.6	2.5	2.2	2.4
Para-professionals	8.8	* 2.7	11.4	3.6	* 1.2	2.4
Tradespersons	78.9	5.7	84.7	7.2	4.5	6.9
Clerks	15.5	36.2	51.7	5.4	3.6	4.0
Salespersons and personal service workers	33.5	39.5	73.0	7.4	5.0	5.8
Plant and machine operators, and drivers	43.3	5.5	48.8	8.8	6.5	8.5
Labourers and related workers	112.4	23.1	135.5	13.3	5.6	10.8
Other	235.4	215.8	451.1
Looking for first job	71.5	77.6	149.1
Looking for full-time work	49.4	47.8	97.2
Former workers	163.9	138.2	302.0
Stood down	7.2	8.1	15.3
Total	564.5	351.6	916.0	11.4	9.8	10.7

Source: The Labour Force, Australia (6203.0).

Job Search Experience of Unemployed Persons

In July 1993, the labour force numbered 8,645,700 persons, of whom 871,300 were unemployed persons taking active steps to find work. Of these, 85 per cent were persons looking for full-time work.

The most frequently reported difficulty in finding work was the belief that there are 'no vacancies at all'. The number of persons reporting this as the main difficulty had fallen from 32 per cent in July 1992 to 25 per cent in July 1993.

In July 1993, 83 per cent of unemployed persons reported that they were registered with the Commonwealth Employment Service (CES). Over the last decade, this percentage has been within the range of 76 per cent (July 1990) to 83 per cent (July 1993).

There were 331,200 persons (38 per cent of total unemployed) whose duration of current period of unemployment (at July 1993) was one year or more. For this group the most frequently reported main difficulties in finding work were 'no vacancies at all' (26%) and 'considered too young or too old by employers' (22%).

TABLE 4.8. UNEMPLOYED PERSONS: MAIN DIFFICULTY IN FINDING WORK, AUSTRALIA, JULY 1983 TO JULY 1993

	July 1983	July 1985	June 1986	July 1988	July 1990	June 1991	July 1992	July 1993	
<i>Main difficulty in finding work</i>	— per cent —								('000)
No vacancies at all	33.1	21.9	19.0	16.1	16.7	33.4	31.9	24.8	216.3
No vacancies in line of work	18.5	14.4	16.0	12.0	14.5	18.4	17.1	16.4	143.0
Considered too young or too old by employers	12.5	16.9	16.3	16.5	15.3	11.7	13.8	16.9	147.0
Lacked necessary skills/education	8.0	9.6	10.0	12.0	13.4	8.9	9.5	10.0	86.9
Insufficient work experience	8.2	8.6	10.1	10.9	9.3	7.9	8.0	9.5	82.7
Own ill health or disability	3.7	5.7	5.8	6.6	6.7	3.8	4.2	4.0	35.1
Too far to travel/transport problems	3.8	5.2	5.7	6.9	5.2	3.6	3.9	4.5	39.4
Language difficulties	1.5	2.7	2.1	3.2	4.4	2.2	2.6	2.5	22.2
Unsuitable hours	2.2	3.8	4.0	3.6	3.4	2.2	1.9	2.6	22.4
Difficulties with childcare/other family responsibilities(a)	1.2	1.6	13.6
Other difficulties(b)	4.9	5.8	5.0	6.1	5.5	5.1	2.6	3.2	28.3
No difficulties reported	3.5	5.4	6.1	6.2	5.6	2.7	3.2	3.9	34.3
Total	100.0	100.0	100.0	100.0	100.0	100.0	100.0	100.0	871.3

(a) Collected separately for the first time in 1992. (b) Includes persons who reported difficulties with ethnic background.

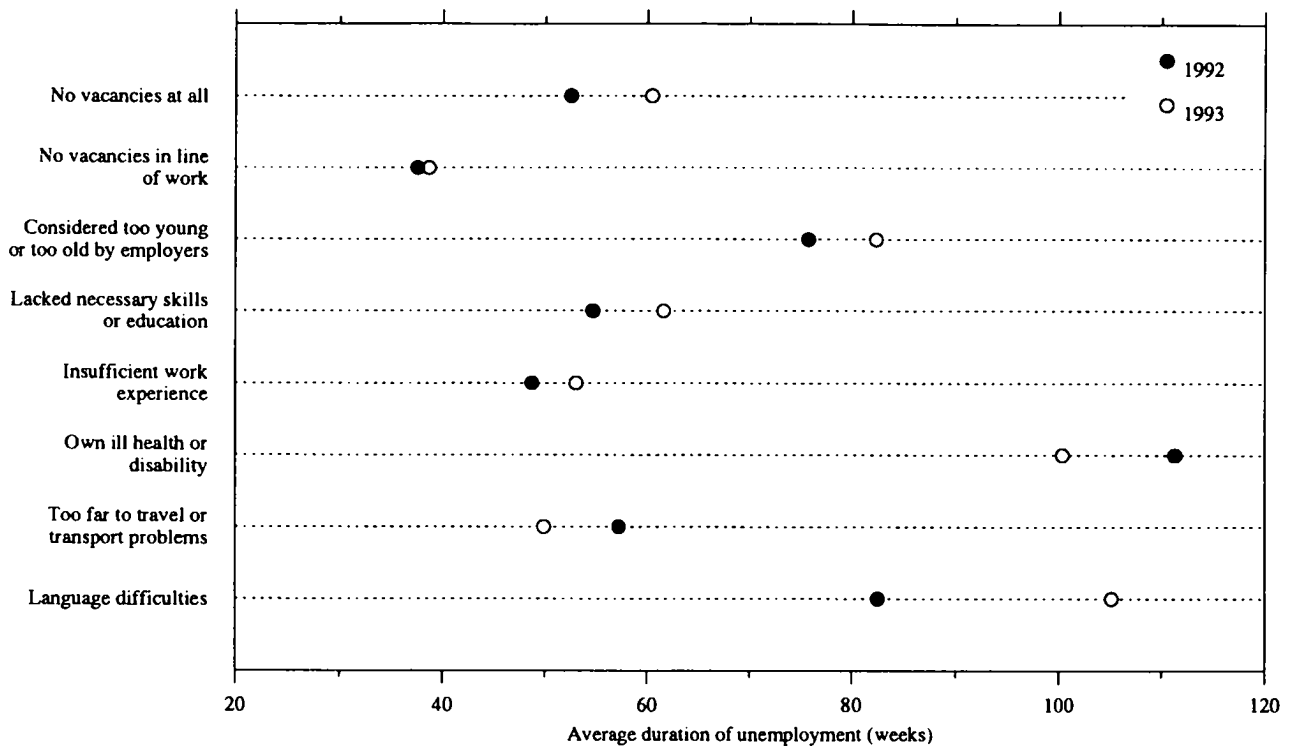
Source: *Job Search Experience of Unemployed Persons, Australia (6222.0)*.

TABLE 4.9. UNEMPLOYED PERSONS: ACTIVE STEPS TAKEN TO FIND WORK, AUSTRALIA, JULY 1983 TO JULY 1993

	July 1983	July 1985	June 1986	July 1988	July 1990	June 1991	July 1992	July 1993	
<i>Active steps taken to find work</i>	— per cent —								('000)
Registered with the CES and—									
Took no other active steps	1.2	1.6	1.5	1.4	1.5	0.6	0.7	0.5	4.7
Contacted prospective employers	74.0	71.9	70.4	71.7	69.7	74.5	77.9	78.3	682.2
Took other active steps	4.9	6.7	6.9	6.1	4.7	3.4	3.8	3.9	34.0
Total	80.2	80.2	78.8	79.2	75.8	78.5	82.4	82.7	720.8
Not registered with the CES and—									
Contacted prospective employers	17.6	17.3	19.3	19.0	22.2	19.5	15.5	15.8	137.9
Took other active steps	2.2	2.5	1.9	1.8	2.0	2.0	2.1	1.4	12.6
Total	19.8	19.8	21.2	20.8	24.2	21.5	17.6	17.3	150.5
Total	100.0	100.0	100.0	100.0	100.0	100.0	100.0	100.0	871.3

Source: *Job Search Experience of Unemployed Persons, Australia (6222.0)*.

CHART 4.7. UNEMPLOYED PERSONS: AVERAGE DURATION OF UNEMPLOYMENT
BY SELECTED MAIN DIFFICULTIES IN FINDING WORK,
AUSTRALIA, JULY 1992 AND JULY 1993



Source: Job Search Experience of Unemployed Persons, Australia (6222.0)

TABLE 4.10. UNEMPLOYED PERSONS: WHETHER WOULD MOVE INTERSTATE OR
INTRASTATE IF OFFERED A SUITABLE JOB, AUSTRALIA, JULY 1983 TO JULY 1993

	July 1983	July 1985	June 1986	July 1988	July 1990	June 1991	July 1993	July 1993	July 1993
	— per cent —								('000)
WHETHER WOULD MOVE INTERSTATE IF OFFERED A SUITABLE JOB									
Would move interstate	29.4	24.8	26.0	24.9	24.7	28.9	31.5	28.5	248.0
Would not move interstate	57.9	62.9	63.0	63.3	65.1	58.3	55.0	57.4	499.9
Moving interstate would depend—									
On job conditions	4.8	5.3	4.0	5.1	4.1	5.0	4.6	5.3	46.5
On other conditions	5.3	4.4	4.9	4.3	4.2	5.2	5.8	6.1	53.2
Total	10.2	9.7	8.9	9.5	8.3	10.2	10.4	11.4	99.7
Undecided	2.5	2.6	2.1	2.3	2.0	2.7	3.2	2.7	23.7
Total	100.0	100.0	100.0	100.0	100.0	100.0	100.0	100.0	871.3
WHETHER WOULD MOVE INTRASTATE IF OFFERED A SUITABLE JOB									
Would move intrastate	42.3	37.4	37.2	37.4	38.4	42.6	44.9	41.7	363.6
Would not move intrastate	43.2	48.3	49.8	48.5	49.5	43.3	39.9	42.6	371.3
Moving intrastate would depend—									
On job conditions	4.8	4.8	3.8	4.6	4.0	4.7	5.0	5.0	43.8
On other conditions	7.9	7.4	7.4	7.5	6.5	7.5	8.0	8.1	71.0
Total	12.7	12.2	11.2	12.1	10.5	12.2	12.9	13.2	114.8
Undecided	1.9	2.2	1.9	2.0	1.7	2.0	2.3	2.5	21.5
Total	100.0	100.0	100.0	100.0	100.0	100.0	100.0	100.0	871.3

Source: Job Search Experience of Unemployed Persons, Australia (6222.0).

Successful and Unsuccessful Job Search Experience

In July 1992 there were an estimated 1,453,000 persons who had started a job for wages or salary (lasting two weeks or more) in the previous twelve months. Of these persons, 1,029,200 had been out of work before starting their job, while 423,800 persons changed employer to start the job.

There were a further 970,800 persons who had looked for, but not started, a job for wages or salary in the last year.

Of the persons who started a job for wages or salary, 39 per cent (563,500) obtained their job by approaching the employer without prior knowledge that the job was available, while 37 per cent (537,300) approached the employer to obtain a job they knew was available. The remaining 24 per cent (352,200) of jobs had been obtained as a result of the employer approaching the jobseeker.

Persons aged 20 years and over were more likely to have started a job in their preferred occupation (67%) than persons aged 15 to 19 years (55%). Persons who changed employer to start their job were far more likely to be working in their preferred occupation (77%) than those who were out of work prior to starting the job (59%). This was the case for all age groups tabulated, except those aged 55 years and over.

TABLE 4.11. PERSONS WHO STARTED A JOB FOR WAGES OR SALARY DURING THE PREVIOUS TWELVE MONTHS
METHOD OF JOB ATTAINMENT AND WHETHER OUT OF WORK PRIOR TO STARTING JOB
AUSTRALIA, JULY 1992

Method of job attainment	Out of work prior to starting job			Changed employer to start job			Total			Total (per cent)
	Males	Females	Persons	Males	Females	Persons	Males	Females	Persons	
Jobseeker approached employer	422.6	392.7	815.4	141.0	144.5	285.4	563.6	537.2	1,100.8	75.8
Had no prior knowledge that job was available	222.4	198.7	421.1	69.7	72.7	142.4	292.1	271.4	563.5	38.8
First step taken —										
Tendered/advertised for work	6.6	*3.1	9.7	*3.4	*1.8	5.2	10.0	4.9	15.0	1.0
Contacted likely employers	130.6	115.9	246.5	39.7	42.5	82.2	170.2	158.5	328.7	22.6
Contacted friends/relatives	47.2	33.1	80.3	12.6	12.4	25.0	59.8	45.5	105.3	7.2
Checked CES noticeboards/ registered with CES	18.2	14.1	32.3	*2.2	*2.8	5.0	20.4	16.9	37.2	2.6
Other	19.8	32.5	52.3	11.8	13.2	25.0	31.7	45.7	77.3	5.3
Had prior knowledge that job was available	200.3	194.0	394.3	71.2	71.8	143.0	271.5	265.8	537.3	37.0
Through CES	22.9	16.5	39.5	*1.3	3.8	5.0	24.2	20.3	44.5	3.1
Through private employment agency	*1.5	4.7	6.2	*0.5	*2.3	*2.8	*2.0	7.0	9.0	0.6
Through school programs	*2.2	3.9	6.2	*2.2	*0.4	*2.5	4.4	4.3	8.7	0.6
Through newspaper advertisements	60.1	66.8	126.9	22.6	27.6	50.1	82.7	94.4	177.0	12.2
Through friends, relatives, company contacts	95.3	82.5	177.8	38.4	28.7	67.2	133.7	111.2	244.9	16.9
Through other sources	18.3	19.6	37.9	6.4	9.0	15.3	24.6	28.6	53.2	3.7
Employer approached jobseeker	96.2	117.6	213.8	71.4	67.0	138.4	167.5	184.7	352.2	24.2
Total	518.8	510.4	1,029.2	212.3	211.5	423.8	731.1	721.9	1,453.0	100.0

Source: Successful and Unsuccessful Job Search Experience, Australia (6245.0).

TABLE 4.12. PERSONS WHO STARTED A JOB FOR WAGES OR SALARY DURING THE PREVIOUS TWELVE MONTHS:
AGE, WHETHER OUT OF WORK PRIOR TO STARTING JOB AND WHETHER JOB STARTED WAS IN
PREFERRED OCCUPATION, AUSTRALIA, JULY 1992
(*000)

Age group	Out of work prior to starting job			Changed employer to start job			Total		
	Job was in preferred occupation	Job was not in preferred occupation	Total(a)	Job was in preferred occupation	Job was not in preferred occupation	Total(a)	Job was in preferred occupation	Job was not in preferred occupation	Total(a)
15-19	132.5	52.3	254.8	34.6	7.2	51.6	167.1	59.5	306.4
20-24	134.5	54.0	228.2	70.4	16.3	94.2	205.0	70.3	322.4
25-34	164.8	57.0	269.3	114.3	18.6	143.4	279.2	75.7	412.7
35-44	109.8	37.9	172.0	70.2	8.6	87.7	180.0	46.5	259.7
45-54	51.1	15.9	77.2	30.3	*3.2	37.5	81.4	19.1	114.7
55 and over	18.5	*3.6	27.6	6.4	*1.5	9.5	24.9	5.1	37.0
Total	611.3	220.7	1,029.2	326.3	55.4	423.8	937.6	276.2	1,453.0

(a) Includes persons who did not have a preferred occupation.

Source: Successful and Unsuccessful Job Search Experience, Australia (6245.0).

TABLE 4.13. PERSONS WHO STARTED A JOB FOR WAGES OR SALARY DURING THE PREVIOUS TWELVE MONTHS, AND PERSONS WHO HAD LOOKED FOR, BUT NOT STARTED, A JOB FOR WAGES OR SALARY DURING THE PREVIOUS TWELVE MONTHS: SUMMARY OF CHARACTERISTICS, AUSTRALIA, JULY 1990 AND JULY 1992 ('000)

	<i>Persons who started a job for wages or salary during the previous twelve months</i>						<i>Persons who had looked for, but not started, a job for wages or salary during the previous twelve months</i>	
	<i>Out of work prior to starting job</i>		<i>Changed employer to start job</i>		<i>Total</i>		<i>July 1990</i>	<i>July 1992</i>
	<i>July 1990</i>	<i>July 1992</i>	<i>July 1990</i>	<i>July 1992</i>	<i>July 1990</i>	<i>July 1992</i>		
<i>Age group —</i>								
15-19	287.7	254.8	160.2	51.6	447.9	306.4	102.2	168.4
20-24	217.3	228.2	166.0	94.2	383.3	322.4	85.0	170.6
25-34	286.4	269.3	248.9	143.4	535.3	412.7	130.0	242.7
35-44	174.5	172.0	157.8	87.7	332.2	259.7	98.0	184.1
45-54	77.1	77.2	60.5	37.5	137.6	114.7	59.6	125.3
55 and over	26.1	27.6	17.9	9.5	44.0	37.0	40.7	79.8
<i>Family status —</i>								
Member of a family	840.9	793.8	623.3	319.5	1,464.1	1,113.3	422.1	779.9
Husband or wife	414.6	399.5	364.4	204.0	779.0	603.5	230.2	429.0
With dependents present	280.5	256.2	225.1	126.7	505.6	382.9	160.2	278.3
Without dependents present	134.1	143.3	139.3	77.3	273.4	220.6	70.0	150.7
Sole parent	40.2	34.1	19.0	12.3	59.2	46.4	33.8	57.9
Other family head	10.8	10.4	10.2	*3.5	20.9	14.0	8.7	14.8
Full-time student aged 15-24	125.5	124.6	60.8	23.4	186.3	148.1	45.4	74.2
Other child of married couple or family head	229.3	204.7	158.8	70.9	388.1	275.6	93.4	186.4
Other relative of married couple or family head	20.5	20.4	10.2	5.4	30.7	25.8	10.5	17.7
Not a member of a family	165.6	169.8	145.9	79.0	311.5	248.8	64.4	140.8
Living alone	52.1	51.8	34.7	28.5	86.7	80.4	29.8	65.4
Not living alone	113.5	117.9	111.3	50.5	224.8	168.4	34.6	75.4
Family status not determined	62.6	65.7	42.1	25.3	104.6	91.0	29.1	50.0
<i>Birthplace and period of arrival —</i>								
Born in Australia	812.8	801.9	627.1	330.3	1,439.9	1,132.2	352.7	671.3
Born outside Australia	256.2	227.3	184.2	93.6	440.4	320.9	162.9	299.5
Arrived before 1961	23.0	20.2	20.0	8.0	43.0	28.3	21.8	36.4
Arrived 1961-1970	53.6	47.1	43.7	26.2	97.2	73.3	36.0	67.7
Arrived 1971-1980	61.3	55.1	45.1	22.9	106.4	78.0	37.8	68.7
Arrived 1981-1990	118.3	75.3	75.5	28.9	193.8	104.2	67.2	101.7
Arrived 1991 to survey date	..	29.5	..	7.5	..	37.1	..	25.0
Born in main English-speaking countries	124.4	113.4	104.2	56.8	228.6	170.2	53.8	99.1
Born in other countries	131.8	113.9	80.0	36.8	211.8	150.6	109.0	200.3
<i>State or Territory of usual residence —</i>								
New South Wales	321.4	324.1	264.6	128.6	586.0	452.7	165.4	313.6
Victoria	256.7	233.3	214.0	90.9	470.7	324.1	117.9	269.5
Queensland	220.3	218.9	141.1	87.3	361.4	306.2	100.1	168.8
South Australia	85.9	81.1	66.1	35.1	152.0	116.2	47.4	87.5
Western Australia	122.1	115.4	81.9	54.5	203.9	169.9	54.9	83.9
Tasmania	26.8	23.4	15.8	9.7	42.6	33.1	17.7	27.2
Northern Territory	13.1	12.5	8.1	7.8	21.3	20.3	3.9	7.0
Australian Capital Territory	22.8	20.6	19.6	9.8	42.4	30.5	8.2	13.3
<i>Labour force status —</i>								
In the labour force	937.9	918.5	766.9	406.3	1,704.8	1,324.9	391.7	762.2
Employed	793.1	743.4	736.6	390.2	1,529.7	1,133.7	32.2	76.7
Unemployed	144.8	175.1	30.3	16.1	175.1	191.2	359.5	685.4
Not in the labour force	131.2	110.7	44.4	17.5	175.6	128.2	123.8	208.6
<i>Sex —</i>								
Males	510.4	518.8	444.2	212.3	954.6	731.1	260.9	562.1
Females	558.6	510.4	367.1	211.5	925.8	721.9	254.6	408.7
<i>Persons</i>	<i>1,069.0</i>	<i>1,029.2</i>	<i>811.3</i>	<i>423.8</i>	<i>1,880.3</i>	<i>1,453.0</i>	<i>515.6</i>	<i>970.8</i>

For footnotes see end of table.

TABLE 4.13. PERSONS WHO STARTED A JOB FOR WAGES OR SALARY DURING THE PREVIOUS TWELVE MONTHS, AND PERSONS WHO HAD LOOKED FOR, BUT NOT STARTED, A JOB FOR WAGES OR SALARY DURING THE PREVIOUS TWELVE MONTHS: SUMMARY OF CHARACTERISTICS, AUSTRALIA, JULY 1990 AND JULY 1992 — *continued*
(^{'000})

	<i>Persons who started a job for wages or salary during the previous twelve months</i>						<i>Persons who had looked for, but not started, a job for wages or salary during the previous twelve months</i>	
	<i>Out of work prior to starting job</i>		<i>Changed employer to start job</i>		<i>Total</i>		<i>July 1990</i>	<i>July 1992</i>
	<i>July 1990</i>	<i>July 1992</i>	<i>July 1990</i>	<i>July 1992</i>	<i>July 1990</i>	<i>July 1992</i>		
<i>Educational attainment —</i>								
With post-school qualifications	386.7	434.8	392.8	238.2	779.5	673.0	155.7	366.3
Degree	75.6	91.7	99.0	65.8	174.6	157.5	23.5	54.6
Trade qualification/apprenticeship	102.0	122.0	107.3	58.7	209.3	180.7	48.3	125.9
Certificate or diploma	201.0	214.5	179.7	109.8	380.8	324.4	76.9	177.0
Other	8.1	6.7	6.7	3.8	14.8	10.5	7.0	8.8
Without post-school qualifications(a)	594.0	507.4	380.0	176.9	974.0	684.3	325.9	552.3
Attended highest level of secondary school available	186.1	192.5	142.0	73.5	328.0	266.0	71.7	136.6
Did not attend highest level of secondary school available	405.3	312.5	235.3	102.9	640.6	415.4	250.9	412.3
Left at age —								
18 and over	10.2	4.9	7.2	*2.6	17.5	7.5	5.5	13.0
16 or 17	190.4	152.8	116.4	51.8	306.8	204.6	88.9	162.4
14 or 15	189.2	145.0	105.0	45.4	294.2	190.3	139.5	204.2
13 and under	15.5	9.8	6.6	3.2	22.1	13.0	17.0	32.7
Still at school	88.3	86.9	38.5	8.8	126.8	95.7	34.0	52.2
<i>Active steps taken in the previous twelve months to find work in preferred occupation/ occupation being sought —</i>								
Had a preferred occupation	884.0	832.1	738.0	381.8	1,622.0	1,213.8	314.1	563.5
This job was in preferred occupation	671.4	611.3	653.5	326.3	1,324.9	937.6
This job was not in preferred occupation	212.6	220.7	84.5	55.4	297.1	276.2
Registered with the CES and —								
Took no other active steps	7.6	*3.6	*2.6	*0.7	10.2	4.3	12.1	16.8
Contacted prospective employers	74.7	95.3	12.6	10.2	87.3	105.5	147.3	328.8
Took other active steps	14.8	16.1	*2.5	*1.0	17.3	17.2	27.6	38.2
Total	97.1	115.0	17.6	12.0	114.7	127.0	187.0	383.8
Not registered with the CES and —								
Took only inactive steps	13.1	9.5	10.0	4.9	23.1	14.4	9.9	17.5
Contacted prospective employers	51.8	51.3	25.1	18.1	76.8	69.4	92.2	119.3
Took other active steps	17.3	17.6	10.8	7.3	28.1	24.9	23.6	40.5
Total	82.2	78.4	45.8	30.2	128.0	108.7	125.6	177.3
Had not looked for work in preferred occupation	33.4	27.3	21.0	13.2	54.4	40.5	*1.5	*2.4
Preferred occupation not specified	..	26.3	..	6.6	..	32.9
Did not have a preferred occupation(b)	185.0	170.9	73.3	35.5	258.3	206.3	201.4	407.4
<i>Full-time or part-time status of job when started/whether looked for full-time or part-time work in the previous twelve months —</i>								
Full-time	617.1	547.1	569.8	271.7	1,186.9	818.8	358.2	411.9
Part-time	451.9	482.1	241.5	152.1	693.4	634.2	138.4	191.7
Varied/both	18.9	367.2
Total	1,069.0	1,029.2	811.3	423.9	1,880.3	1,453.0	515.6	970.8

(a) Includes persons who never attended school and those for whom secondary school qualifications could not be determined. (b) Includes persons for whom a preferred occupation was not specified in July 1990.

Source: *Successful and Unsuccessful Job Search Experience, Australia (6245.0)*.

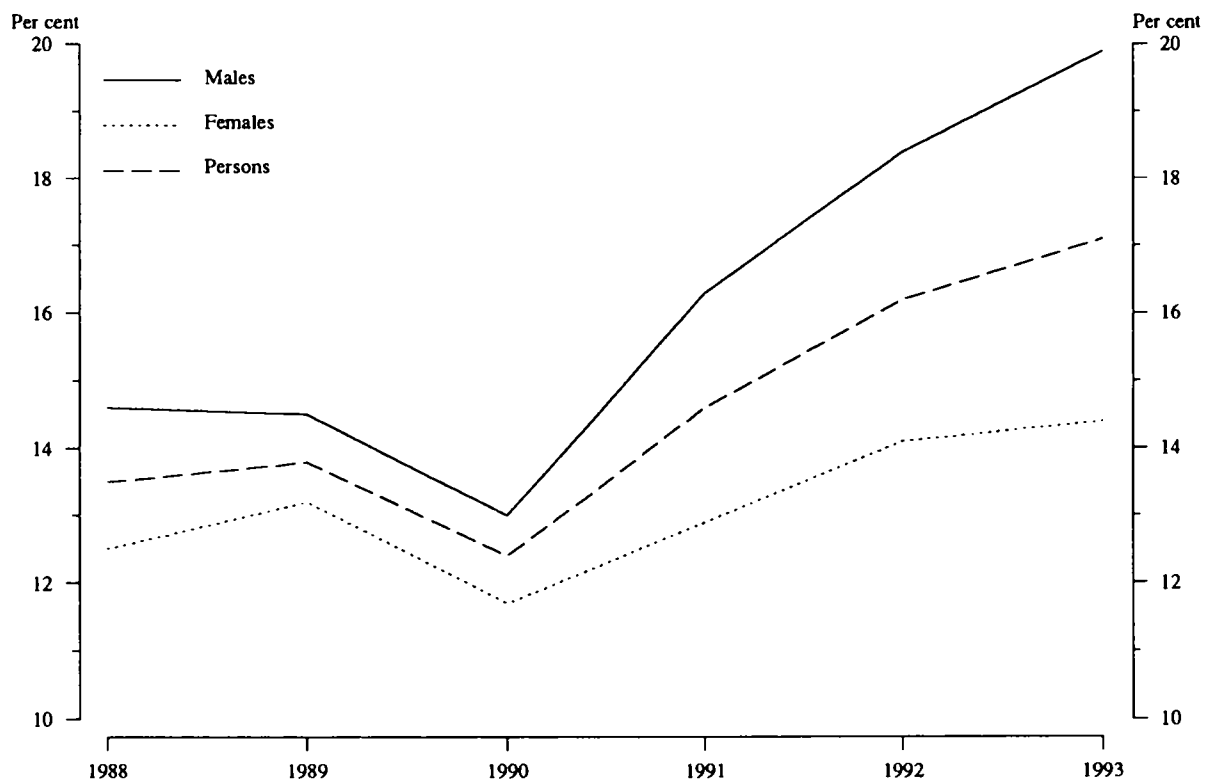
Labour Force Experience

An estimated 2,110,100 persons looked for work at some time during the year ending March 1993. The proportion of males who looked for work at some time during that year increased from 13 per cent in 1990 to 20 per cent in 1993 and for females there was an increase from 12 per cent in 1990 to 14 per cent in 1993.

Of the 2,110,100 persons who looked for work during the year ending March 1993, 77 per cent had only one spell of looking for work and spent, on average, 25 weeks looking for work.

An estimated 386,500 persons had looked for work for 52 weeks, and 807,200 persons had looked for work for less than 13 weeks.

CHART 4.8. ALL PERSONS: PROPORTION WHO HAD LOOKED FOR WORK AT SOME TIME IN THE PREVIOUS TWELVE MONTHS, AUSTRALIA



Source: Labour Force Experience, Australia (6206.0).

TABLE 4.14. PERSONS IN THE LABOUR FORCE AT SOME TIME DURING THE YEAR ENDING MARCH 1993: PROPORTION WHO LOOKED FOR WORK AT SOME TIME, AGE AND MARITAL STATUS, AUSTRALIA (per cent)

Age group (years)	Married			Not-married			Total		
	Males	Females	Persons	Males	Females	Persons	Males	Females	Persons
15-19	74.2	55.5	61.8	45.7	44.8	45.3	46.0	45.1	45.6
20-24	32.7	28.0	29.8	35.5	30.9	33.5	35.1	30.1	32.8
25-34	19.4	17.9	18.7	30.3	24.4	27.9	23.6	20.1	22.1
35-44	15.6	14.8	15.3	26.5	22.9	24.8	17.7	16.6	17.2
45-54	12.9	11.3	12.2	24.7	24.7	24.7	14.6	14.2	14.4
55-59	18.1	6.0	14.3	19.4	17.3	18.4	18.3	8.9	15.0
60-64	18.0	*3.4	14.7	26.9	*8.8	19.6	19.5	5.1	15.7
65-69	*5.9	*2.9	*5.3	*11.3	*0.0	*6.4	6.8	*2.0	5.5
Total	16.7	15.2	16.1	33.9	30.6	32.4	23.2	21.5	22.5

Source: Labour Force Experience, Australia (6206.0).

Educational Attainment

As a percentage of the total unemployed, persons with post-school qualifications rose from 29 per cent to 38 per cent between February 1988 and February 1993. In contrast, the proportion of total unemployed persons who were without post-school qualifications fell from 65 per cent to 58 per cent. Persons without post-school qualifications who had not attended the highest level of secondary schooling available fell from 49 per cent of total unemployed persons in February 1988 to 38 per cent in February 1993.

The unemployment rate for persons with post-school qualifications decreased from 5.1 per cent in February 1988 to 4.4 per cent in February 1990, then increased to 9.1 per cent in February 1993. For persons with a degree, the unemployment rate rose from 3.6 per cent in February 1988 to 6.2 per cent in February 1993. Between February 1991 and February 1993 the unemployment rate for persons without post-school qualifications increased from 11.5 per cent to 14.8 per cent.

TABLE 4.15. UNEMPLOYED PERSONS AGED 15 TO 69 : EDUCATIONAL ATTAINMENT AND UNEMPLOYMENT RATES, AUSTRALIA, FEBRUARY 1988 TO FEBRUARY 1993

February	With post-school qualifications				Without post-school qualifications		Total(b)	Total(c)
	Degree	Trade qualification	Certificate or diploma	Total(a)	Attended highest level of secondary school	Did not attend highest level of secondary school		
UNEMPLOYED ('000)								
1988	27.2	61.8	89.5	181.8	97.2	r 310.5	410.9	633.0
1989	32.3	46.6	83.6	165.9	97.0	r 286.3	384.8	588.0
1990	37.5	46.3	80.5	168.3	97.0	r 279.2	377.4	581.8
1991	44.2	88.2	131.2	269.3	133.1	r 352.3	486.4	800.7
1992	59.4	118.6	161.9	344.6	181.5	r 412.6	596.6	986.1
1993	65.3	135.1	185.7	394.1	197.5	400.2	601.5	1,040.5
UNEMPLOYMENT RATE (per cent)								
1988	3.6	4.8	6.1	5.1	9.5	r 10.1	10.0	8.1
1989	4.0	3.6	5.3	4.5	9.0	9.2	r 9.1	7.3
1990	4.3	3.6	5.0	4.4	8.3	9.0	8.8	7.0
1991	4.8	6.6	7.6	6.7	10.8	11.7	11.5	9.5
1992	5.9	8.7	9.1	8.3	14.1	r 14.2	14.2	11.5
1993	6.2	9.6	10.2	9.1	14.6	14.8	14.8	12.1
AVERAGE DURATION OF UNEMPLOYMENT (weeks)								
1988	24.9	r 48.2	33.9	r 38.1	r 27.6	r 57.4	r 50.6	r 44.6
1989	23.4	r 64.3	31.7	r 39.6	22.6	r 59.3	50.1	r 44.9
1990	27.6	37.4	33.5	33.1	23.4	r 48.0	41.9	37.4
1991	17.9	36.0	30.0	30.2	20.5	r 49.7	41.7	36.3
1992	26.4	43.0	38.1	37.8	29.1	r 58.7	49.8	44.3
1993	37.8	51.3	43.9	46.9	34.4	66.9	56.4	51.3
MEDIAN DURATION OF UNEMPLOYMENT (weeks)								
1988	7	15	8	9	9	24	17	13
1989	8	19	8	9	8	18	13	11
1990	8	8	7	8	6	13	10	9
1991	8	13	11	11	9	18	13	13
1992	12	26	15	17	12	33	26	21
1993	16	26	19	22	12	34	26	24

(a) Includes persons with other post-school qualifications. (b) Includes persons who never attended school. (c) Includes persons aged 15 to 20 still at school.

Source: Labour Force Status and Educational Attainment, Australia (6235.0).

TABLE 4.16. UNEMPLOYED PERSONS AGED 15 TO 69: EDUCATIONAL ATTAINMENT AND AGE, AUSTRALIA, FEBRUARY 1993 ('000)

Educational attainment	Age group (years)						Total
	15 - 19	20 - 24	25 - 34	35 - 44	45 - 54	55 - 69	
MALES							
With post-school qualifications	7.5	38.8	66.6	56.2	32.5	29.6	231.2
Degree	* 0.0	4.8	9.7	11.5	4.7	* 2.9	33.5
Trade qualification	* 1.3	19.1	33.2	29.3	19.6	20.8	123.3
Certificate or diploma	5.6	14.9	21.4	15.2	7.5	4.6	69.1
Other	* 0.6	* 0.0	* 2.3	* 0.2	* 0.8	* 1.3	5.3
Without post-school qualifications	80.4	78.5	90.7	61.0	37.1	30.1	377.9
Attended highest level of secondary school available	41.6	30.4	21.2	12.3	6.4	3.6	115.4
Did not attend highest level of secondary school available	38.8	48.1	69.6	48.4	30.1	25.6	260.5
Left at age —							
18 and over	* 0.9	* 2.2	* 2.5	* 0.9	* 1.3	* 0.4	8.3
16 or 17	22.2	28.0	28.8	16.3	4.5	* 2.7	102.6
14 or 15	15.3	16.7	33.5	25.1	19.1	17.2	126.9
13 and under	* 0.3	* 1.2	4.7	6.1	5.1	5.3	22.6
Never attended school	* 0.0	* 0.0	* 0.0	* 0.3	* 0.7	* 0.9	* 2.0
Still at school	22.0	* 0.0	22.0
Total	109.9	117.3	157.3	117.2	69.7	59.7	631.1
FEMALES							
With post-school qualifications	12.0	39.1	50.0	38.0	20.5	* 3.2	162.9
Degree	* 0.0	8.4	10.3	7.0	5.6	* 0.5	31.8
Trade qualification	* 0.8	3.6	* 2.5	* 3.2	* 1.2	* 0.3	11.8
Certificate or diploma	10.7	26.2	36.6	27.7	13.2	* 2.3	116.6
Other	* 0.5	* 0.9	* 0.7	* 0.2	* 0.4	* 0.0	* 2.6
Without post-school qualifications	55.4	44.2	49.0	41.3	28.2	5.5	223.6
Attended highest level of secondary school available	35.1	24.1	11.7	8.2	* 2.5	* 0.4	82.1
Did not attend highest level of secondary school available	20.3	20.0	37.0	32.4	25.7	4.4	139.8
Left at age —							
18 and over	* 1.7	* 0.6	* 0.8	* 0.0	* 0.0	* 0.0	* 3.2
16 or 17	9.3	11.8	19.7	11.1	6.2	* 0.3	58.4
14 or 15	9.1	7.6	15.1	17.6	16.3	* 2.9	68.5
13 and under	* 0.2	* 0.0	* 1.4	3.6	* 3.3	* 1.2	9.7
Never attended school	* 0.0	* 0.0	* 0.3	* 0.8	* 0.0	* 0.6	* 1.8
Still at school	22.9	* 0.0	22.9
Total	90.2	83.3	99.0	79.4	48.7	8.7	409.3
PERSONS							
With post-school qualifications	19.5	77.9	116.6	94.3	53.0	32.8	394.1
Degree	* 0.0	13.3	20.0	18.4	10.2	* 3.4	65.3
Trade qualification	* 2.1	22.7	35.8	32.6	20.8	21.1	135.1
Certificate or diploma	16.3	41.0	57.9	42.9	20.7	6.9	185.7
Other	* 1.1	* 0.9	* 2.9	* 0.4	* 1.3	* 1.3	7.9
Without post-school qualifications	135.7	122.7	139.7	102.3	65.4	35.6	601.5
Attended highest level of secondary school available	76.7	54.6	32.9	20.5	8.9	4.1	197.5
Did not attend highest level of secondary school available	59.0	68.1	106.6	80.7	55.8	30.0	400.2
Left at age —							
18 and over	* 2.6	* 2.9	* 3.3	* 0.9	* 1.3	* 0.4	11.4
16 or 17	31.5	39.9	48.5	27.4	10.7	* 3.0	161.1
14 or 15	24.4	24.3	48.7	42.7	35.4	20.0	195.4
13 and under	* 0.5	* 1.2	6.1	9.7	8.3	6.5	32.3
Never attended school	* 0.0	* 0.0	* 0.3	* 1.1	* 0.7	* 1.6	3.7
Still at school	44.9	* 0.0	44.9
Total	200.1	200.6	256.3	196.6	118.4	68.4	1,040.5

Source: Labour Force Status and Educational Attainment, Australia (6235.0).

Families

In June 1993, of the 590,900 families with one or more members unemployed, 44 per cent had no member employed, 35 per cent had one employed and 21 per cent had two or more employed. Dependants were present in 60 per cent of the 590,900 families with one or more members unemployed.

Unemployment rates varied from 19 per cent for full-time students aged 15-24 to 17 per cent for sole parents to 7 per cent for husband or wife in married-couple families. For persons who were not a member of a family the unemployment rate was 14 per cent. The average duration of unemployment for husbands or wives was 65 weeks. For sole parents it was 48 weeks and for those who were not members of a family, 60 weeks (living alone 80 weeks, not living alone 45 weeks).

TABLE 4.17. FAMILIES WITH ONE OR MORE MEMBERS UNEMPLOYED: TYPE OF FAMILY, LABOUR FORCE STATUS(a) OF FAMILY MEMBERS AND WHETHER DEPENDANTS PRESENT, AUSTRALIA, JUNE 1993
(*000 families)

	None employed			One employed			Two or more employed			Total		
	One unemp-loyed	Two or more unemp-loyed	Total	One unemp-loyed	Two or more unemp-loyed	Total	One unemp-loyed	Two or more unemp-loyed	Total	One unemp-loyed	Two or more unemp-loyed	Total
Married-couple families	142.4	46.0	188.3	144.8	15.4	160.2	99.9	11.8	111.7	387.1	73.1	460.2
With dependants present	93.2	28.7	121.9	87.7	9.4	97.1	62.7	6.2	68.9	243.7	44.3	288.0
Without dependants present	49.1	17.3	66.4	57.1	6.0	63.1	37.3	5.6	42.8	143.5	28.8	172.3
One-parent families	39.4	3.9	43.3	14.2	* 1.5	15.7	4.0	* 0.1	4.1	57.5	5.4	63.0
Other families	22.3	8.2	30.5	28.3	* 0.7	29.0	7.8	* 0.3	8.1	58.5	9.2	67.7
All families	204.1	58.1	262.1	187.3	17.6	204.9	111.7	12.1	123.9	503.1	87.8	590.9
With dependants present	133.9	33.0	166.9	102.8	10.9	113.6	66.9	6.3	73.2	303.5	50.2	353.7
Without dependants present	70.2	25.0	95.3	84.5	6.7	91.3	44.9	5.8	50.7	199.6	37.6	237.2

(a) Labour force status refers to persons aged 15 and over only.

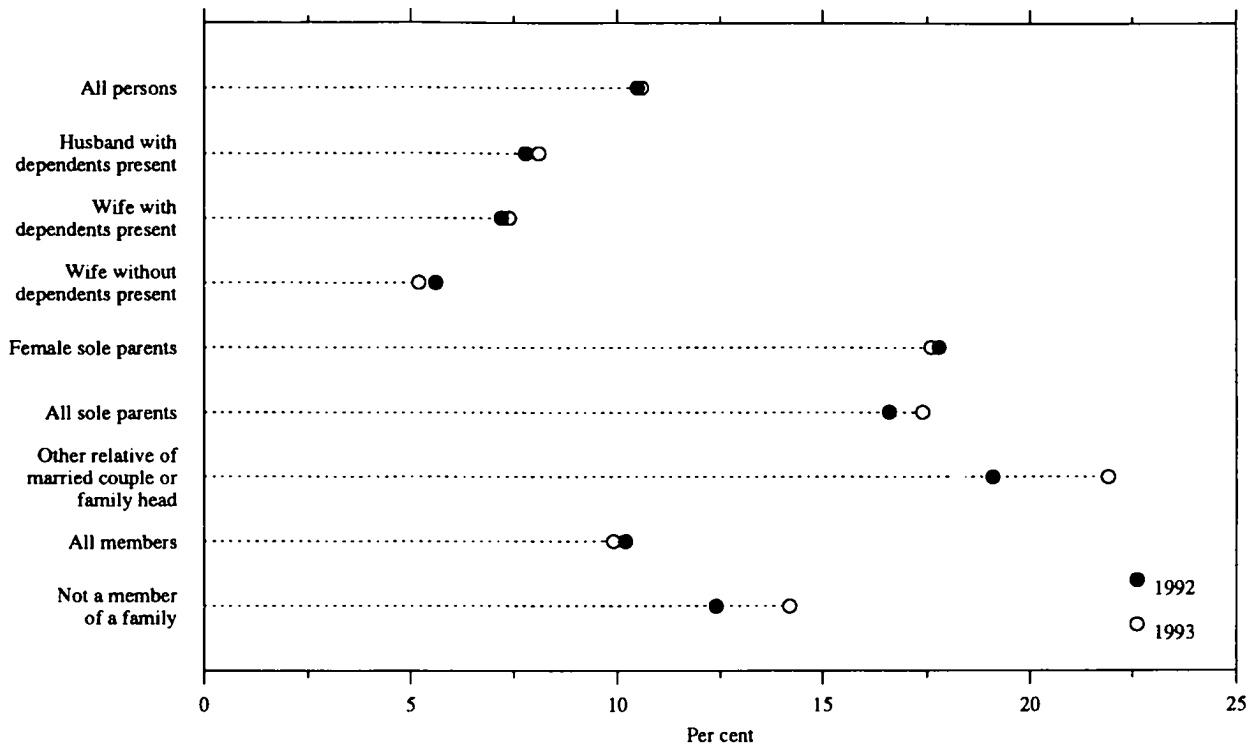
Source: *Labour Force Status and Other Characteristics of Families, Australia, (6224.0)*.

TABLE 4.18. FAMILY STATUS OF UNEMPLOYED PERSONS(a): UNEMPLOYMENT RATES, AUSTRALIA, JUNE 1991 TO JUNE 1993
(per cent)

	Males			Females			Persons		
	June 1991	June 1992	June 1993	June 1991	June 1992	June 1993	June 1991	June 1992	June 1993
Member of a family	8.8	10.6	10.4	8.2	9.6	9.2	8.5	10.2	9.9
Husband or wife	6.2	7.6	7.8	5.7	6.6	6.5	6.0	7.2	7.3
With dependants present	6.3	7.8	8.1	6.4	7.2	7.4	6.3	7.6	7.8
Without dependants present	5.9	7.2	7.3	4.8	5.6	5.2	5.4	6.5	6.4
Sole parent	12.7	10.3	16.0	14.0	17.7	17.6	13.8	16.5	17.4
Other family head	13.1	11.2	14.6	7.9	11.7	12.4	10.0	11.5	13.3
Full-time student aged 15-24(b)	17.7	19.3	21.2	15.8	16.9	17.3	16.7	18.0	19.0
Other child(c) of married couple or family head	16.6	20.6	17.6	13.6	16.5	14.0	15.5	19.0	16.3
Other relative of married couple or family head	21.1	20.3	23.0	20.2	16.8	20.2	20.7	19.1	21.9
Not a member of a family	10.8	13.3	16.3	9.4	11.0	11.1	10.3	12.4	14.2
Living alone	10.4	12.1	15.4	8.0	8.5	9.4	9.4	10.7	13.1
Not living alone	11.2	14.4	17.0	10.4	13.0	12.5	10.9	13.8	15.1
Total	9.1	11.0	11.3	8.4	9.8	9.5	8.8	10.5	10.6

(a) Civilians who were residents of households where family status was determined. See the Technical Notes for further information. (b) Excludes persons aged 20-24 attending school. Also excludes full-time students aged 15-24 who are classified as husbands, wives, sole parents or other family heads. (c) Aged 15 and over. Source: *Labour Force Status and Other Characteristics of Families, Australia (6224.0)*.

CHART 4.9. UNEMPLOYMENT RATES: FAMILY STATUS,
AUSTRALIA, JUNE 1992 AND JUNE 1993



Source: *Labour Force Status and Other Characteristics of Families, Australia (6224.0)*.

TABLE 4.19. FAMILY STATUS OF UNEMPLOYED PERSONS(a): DURATION OF UNEMPLOYMENT,
AUSTRALIA, JUNE 1993

	Duration of unemployment (weeks)							Total	Average duration	Median duration
	Under 2	2 and under 4	4 and under 8	8 and under 13	13 and under 26	26 and under 52	52 and over			
	— '000 —									— weeks —
Member of a family	39.2	46.2	53.1	47.6	112.7	131.7	260.6	691.1	58.2	27
Husband or wife	19.1	27.0	24.2	24.8	54.3	66.8	153.4	369.6	64.9	32
With dependants present	13.4	19.5	16.1	16.0	35.5	44.2	94.5	239.1	59.8	30
Without dependants present	5.8	7.5	8.2	8.8	18.8	22.5	58.9	130.5	74.2	38
Sole parent	* 2.4	* 3.0	* 3.1	3.9	6.4	6.4	14.2	39.4	48.4	26
Other family head	* 0.4	* 0.7	* 1.9	* 2.3	* 3.0	* 2.3	7.2	17.8	79.1	26
Full-time student aged 15-24(b)	8.4	5.5	7.8	4.2	13.7	9.7	11.1	60.4	27.3	18
Other child(c) of married couple or family head	7.9	9.5	14.1	11.1	30.8	41.4	66.3	181.1	54.4	27
Other relative of married couple or family head	* 1.0	* 0.5	* 1.9	* 1.3	4.5	5.1	8.4	22.8	62.8	30
Not a member of a family	5.4	10.3	17.8	14.1	32.6	29.6	69.6	179.4	59.9	28
Living alone	* 3.2	4.6	5.5	* 2.9	11.5	11.6	37.3	76.6	79.6	47
Not living alone	* 2.2	5.7	12.3	11.1	21.1	18.1	32.3	102.8	45.3	24
Total	44.6	56.6	70.8	61.7	145.3	161.3	330.2	870.5	58.5	27.1

(a) Civilians who were residents of households where family status was determined. (b) Excludes persons aged 20-24 attending school. Also excludes full-time students aged 15-24 who are classified as husbands, wives, sole parents or other family heads. (c) Aged 15 and over.

Source: *Labour Force Status and Other Characteristics of Families, Australia (6224.0)*.

Job Vacancies

A job vacancy is a job available for immediate filling on the survey reference date and for which recruitment action has been taken. For a full definition of a job vacancy refer to the Glossary. Vacancies available only to persons already employed by the organisation are excluded.

The number of job vacancies in Australia at November 1993 was estimated at 38,200 — an increase of 9,000 since November 1992.

The greatest increases in numbers of vacancies since November 1992 were recorded in the Retail trade (2,600) and Construction (1,700) industries.

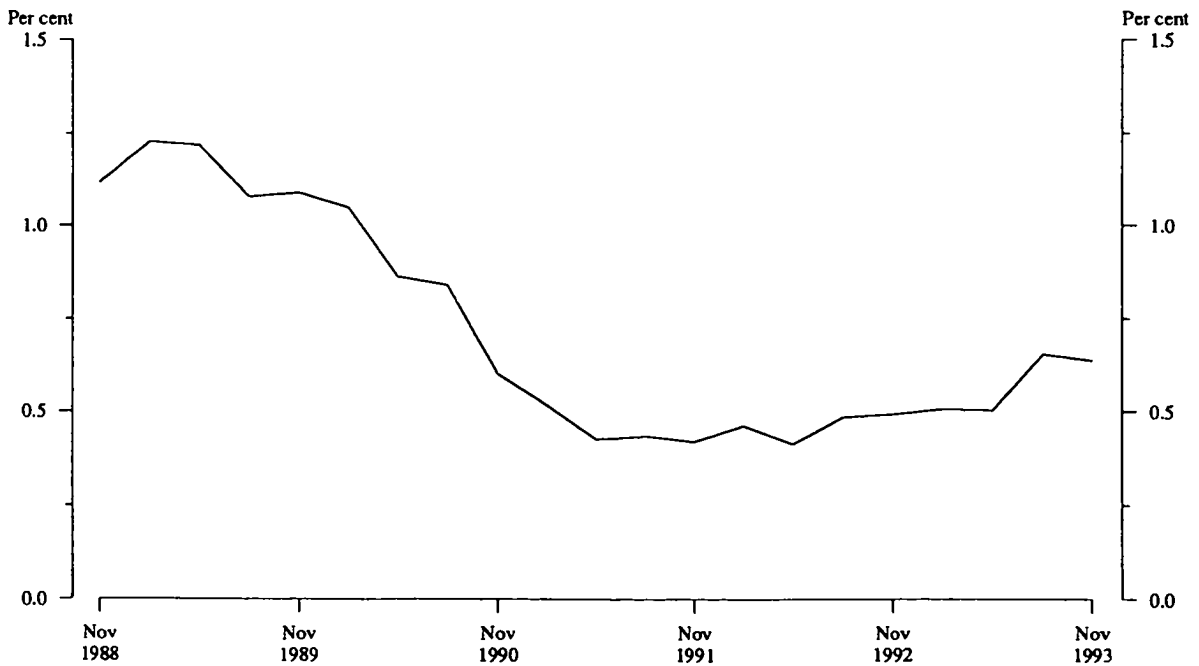
TABLE 4.20. JOB VACANCIES : INDUSTRY, AUSTRALIA, NOVEMBER 1988 TO NOVEMBER 1993 ('000)

Industry	November					
	1988	1989	1990	1991	1992	1993
Mining	0.7	0.4	0.3	0.3	0.2	0.7
Manufacturing	15.1	11.7	3.7	*3.3	4.5	4.9
Electricity, gas and water	0.8	0.7	0.4	0.2	0.2	0.2
Construction	3.5	3.3	1.1	1.8	0.5	2.2
Wholesale trade	1.9	4.2	2.0	0.9	1.2	2.2
Retail trade	13.6	9.9	4.0	4.4	3.5	6.1
Transport and storage; Communication	2.0	2.3	*1.0	*1.0	1.5	2.2
Public administration and defence(a)	4.3	4.9	3.7	2.5	2.8	3.1
Community services	13.2	12.8	10.3	6.4	5.7	6.8
Other(b)	11.5	12.5	7.6	4.2	9.1	9.7
Total all industries	66.6	62.7	34.1	24.9	29.2	38.2

(a) Excludes permanent defence forces. (b) Comprises Finance, property and business services and Recreation, personal and other services.

Source: *Job Vacancies and Overtime, Australia (6354.0)*.

CHART 4.10. JOB VACANCY RATE, AUSTRALIA



Source: *Job Vacancies and Overtime, Australia (6354.0)*