

## CHAPTER 2

### THE LABOUR FORCE

Fundamental to the measurement of employment and unemployment is the concept of the labour force. The labour force is defined broadly as those persons who during a particular week are either employed or unemployed. The labour force represents the total supply of labour available to the labour market during a given week.

This chapter presents some summary statistics on the civilian labour force. The most important labour force measure is the participation rate, which represents the proportion of the working age population (defined to be those aged 15 and over) who are in the labour force. Analysis of the participation rates provides a basis for monitoring changes in the size and composition of labour supply, particularly in terms of age, sex and marital status. Other characteristics of the labour force such as birthplace, educational attainment and family characteristics are also of interest.

The principal source for statistics on the civilian labour force is the ABS population survey, which consists of the monthly labour force survey and attached supplementary surveys. The labour force survey collects information on the labour force status of individuals (i.e. whether they are employed, unemployed or not in the labour force) together with a range of demographic and other characteristics. It has provided the basis for an analysis of underemployment and labour underutilisation, a topic included in Chapter 3. The supplementary surveys cover a range of topics including the Survey of Labour Force Experience, conducted in February in each year, which examines the movements into and out of the labour force over twelve months.

Members of the permanent Defence Forces are excluded from the labour force survey. Their numbers totalled 64,511 males and 4,780 females at the end of June 1985.

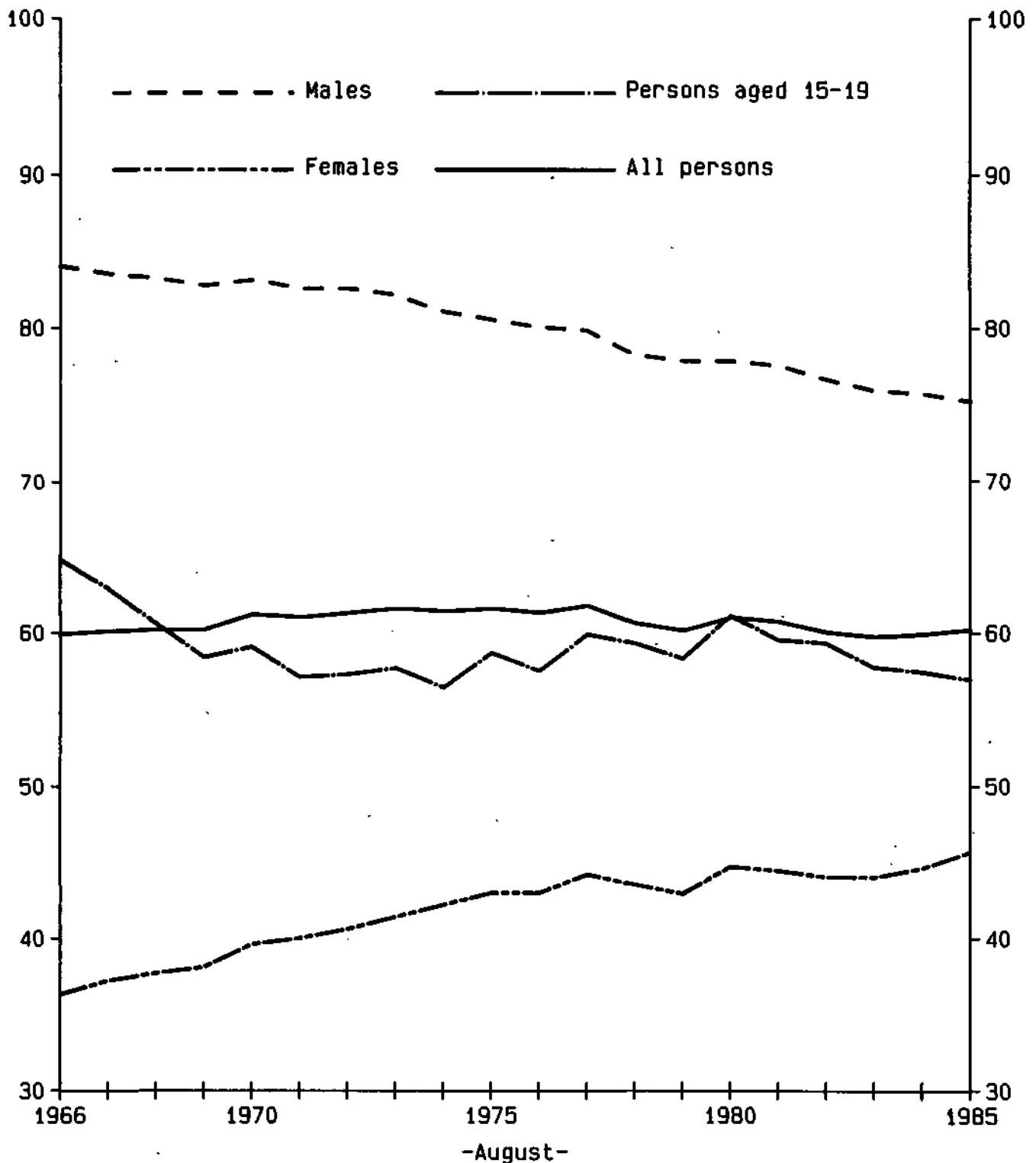
**TABLE 2.1. LABOUR FORCE: SOURCES OF GROWTH, AUGUST 1975 TO AUGUST 1985**  
(per cent)

Year ending August	Males			Females			Persons		
	Percentage change in labour force	Component of change due to		Percentage change in labour force	Component of change due to		Percentage change in labour force	Component of change due to	
		Population growth	Labour force participation		Population growth	Labour force participation		Population growth	Labour force participation
1975	1.1	1.7	-0.6	3.8	1.8	2.0	2.1	1.7	0.4
1976	0.8	1.6	-0.8	1.7	1.7	0.0	1.2	1.7	-0.5
1977	1.6	1.8	-0.2	4.6	1.9	2.7	2.7	1.8	0.9
1978	-0.4	2.5	-2.1	1.4	3.0	-1.6	0.8	2.8	-2.0
1979	1.1	1.6	-0.5	0.3	1.8	-1.4	0.8	1.7	-0.4
1980	1.8	1.7	0.1	6.2	1.8	4.3	3.4	1.8	1.6
1981	1.6	2.0	-0.4	1.3	2.1	-0.8	1.5	2.1	-0.6
1982	0.9	2.1	-1.2	1.1	2.1	-0.9	1.0	2.1	-1.1
1983	0.9	1.8	-0.9	2.0	1.8	0.1	1.3	1.8	-0.5
1984	1.4	1.6	-0.2	3.0	1.6	1.4	2.0	1.6	-0.4
1985	1.0	1.6	-0.6	4.0	1.6	2.4	2.1	1.6	0.6

Source: *The Labour Force, Australia* (6203.0).

**CHART 2.a. CIVILIAN POPULATION AGED 15 AND OVER:  
LABOUR FORCE PARTICIPATION RATES,  
AUGUST 1966 TO 1985**

Per cent



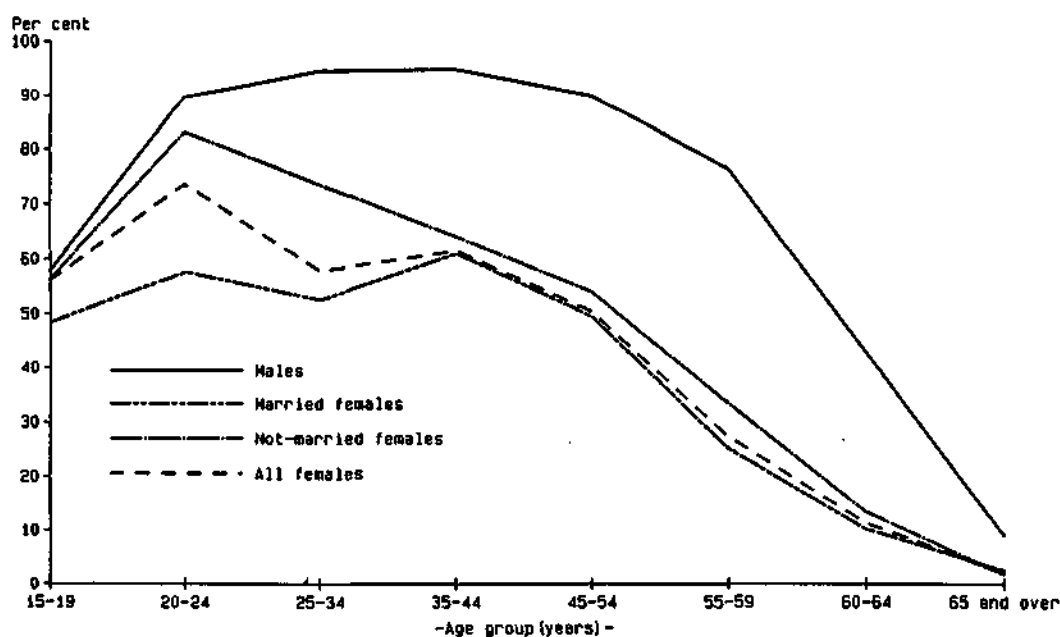
Source: The Labour Force, Australia (6203.0) .

**TABLE 2.2. LABOUR FORCE PARTICIPATION RATES BY AGE, AUGUST 1975 TO AUGUST 1985**  
(Per cent)

August	Age group								Total
	15-19	20-24	25-34	35-44	45-54	55-59	60-64	65 and over	
MALES									
1975	60.0	90.1	96.8	96.8	93.9	87.8	68.6	16.7	80.5
1976	60.2	90.8	96.9	96.8	94.0	86.9	64.0	14.3	80.0
1977	62.1	91.2	96.9	97.0	93.2	86.3	62.2	13.7	79.8
1978	61.0	89.6	95.9	95.6	91.6	81.9	59.7	12.0	78.2
1979	61.4	90.2	95.8	95.6	91.2	82.0	53.5	11.5	77.8
1980	62.8	90.5	95.5	95.9	91.4	83.3	50.2	11.1	77.8
1981	61.8	91.3	95.3	95.2	91.3	81.1	51.2	10.6	77.5
1982	62.4	89.3	94.9	95.1	90.0	79.1	47.7	9.2	76.6
1983	58.2	89.6	95.4	95.0	90.4	78.2	42.8	8.6	75.9
1984	59.1	89.4	95.1	94.7	90.1	76.8	43.5	9.0	75.7
1985	57.8	89.7	94.5	94.8	90.0	76.4	42.7	8.9	75.2
FEMALES									
1975	57.3	65.3	48.4	54.4	46.3	31.2	15.6	3.9	43.0
1976	54.7	66.4	48.2	54.7	48.8	31.5	15.1	3.5	43.0
1977	57.6	68.7	50.4	55.9	48.3	31.6	15.2	3.5	44.2
1978	57.5	66.9	51.0	56.7	47.5	30.2	13.8	2.8	43.5
1979	55.0	69.2	50.3	57.1	46.8	26.2	13.2	2.4	42.9
1980	59.2	71.1	52.8	58.7	47.6	29.1	13.5	2.9	44.7
1981	57.1	70.7	52.9	58.1	49.0	29.8	12.0	2.6	44.4
1982	56.1	70.0	53.6	58.0	49.5	26.0	9.1	2.5	44.0
1983	57.0	70.8	52.8	58.0	48.5	28.3	12.1	2.1	44.0
1984	55.7	71.7	54.9	58.7	50.1	27.6	11.5	2.5	44.6
1985	56.1	73.6	57.7	61.4	50.2	27.2	11.2	2.0	45.7
PERSONS									
1975	58.7	77.6	72.9	76.0	70.6	59.3	41.4	9.4	61.6
1976	57.5	78.5	72.7	76.1	71.8	59.0	38.8	8.2	61.3
1977	59.9	79.8	73.7	76.8	71.2	58.8	38.0	7.9	61.8
1978	59.3	78.2	73.6	76.5	70.0	55.8	35.8	6.7	60.6
1979	58.3	79.7	73.1	76.7	69.5	53.8	32.5	6.2	60.1
1980	61.1	80.8	74.2	77.6	70.0	56.0	31.0	6.4	61.0
1981	59.5	81.0	74.2	76.9	70.6	55.4	30.7	5.9	60.7
1982	59.3	79.6	74.3	76.9	70.2	52.5	27.9	5.3	60.0
1983	57.6	80.2	74.1	76.8	69.9	53.4	26.9	4.8	59.7
1984	57.4	80.6	75.0	76.9	70.5	52.4	27.0	5.2	59.9
1985	56.9	81.7	76.1	78.3	70.5	52.0	26.5	4.9	60.2

Source: *The Labour Force, Australia* (6203.0).

**CHART 2.b. CIVILIAN POPULATION AGED 15 AND OVER: AGE, LABOUR FORCE PARTICIPATION RATES, AUGUST 1985**



Source: *The Labour Force, Australia* (6203.0).

**CHART 2.c. LABOUR FORCE STATUS OF THE CIVILIAN POPULATION  
AGED 15 AND OVER: AGE GROUPS AND SEX, AUGUST 1975 AND AUGUST 1985**

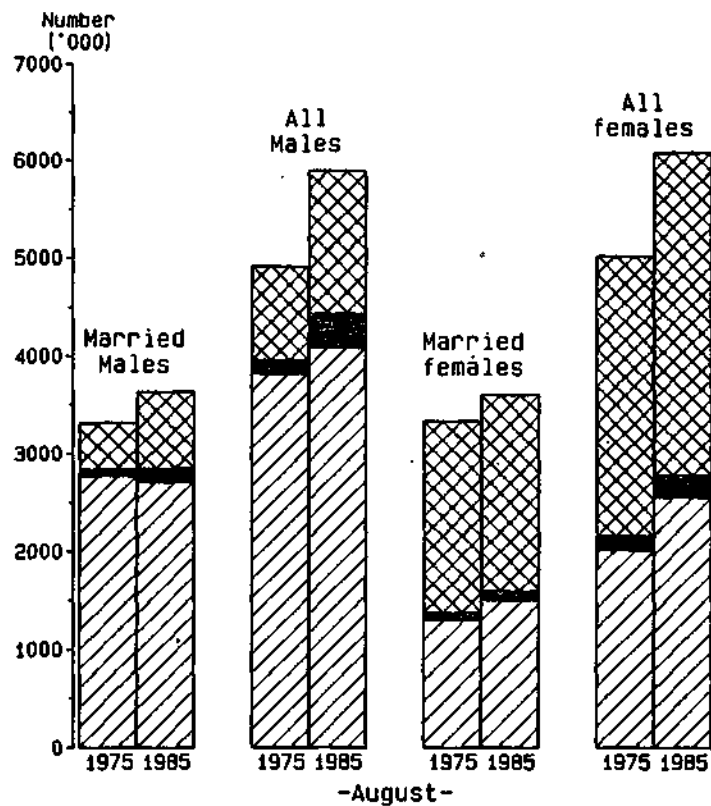
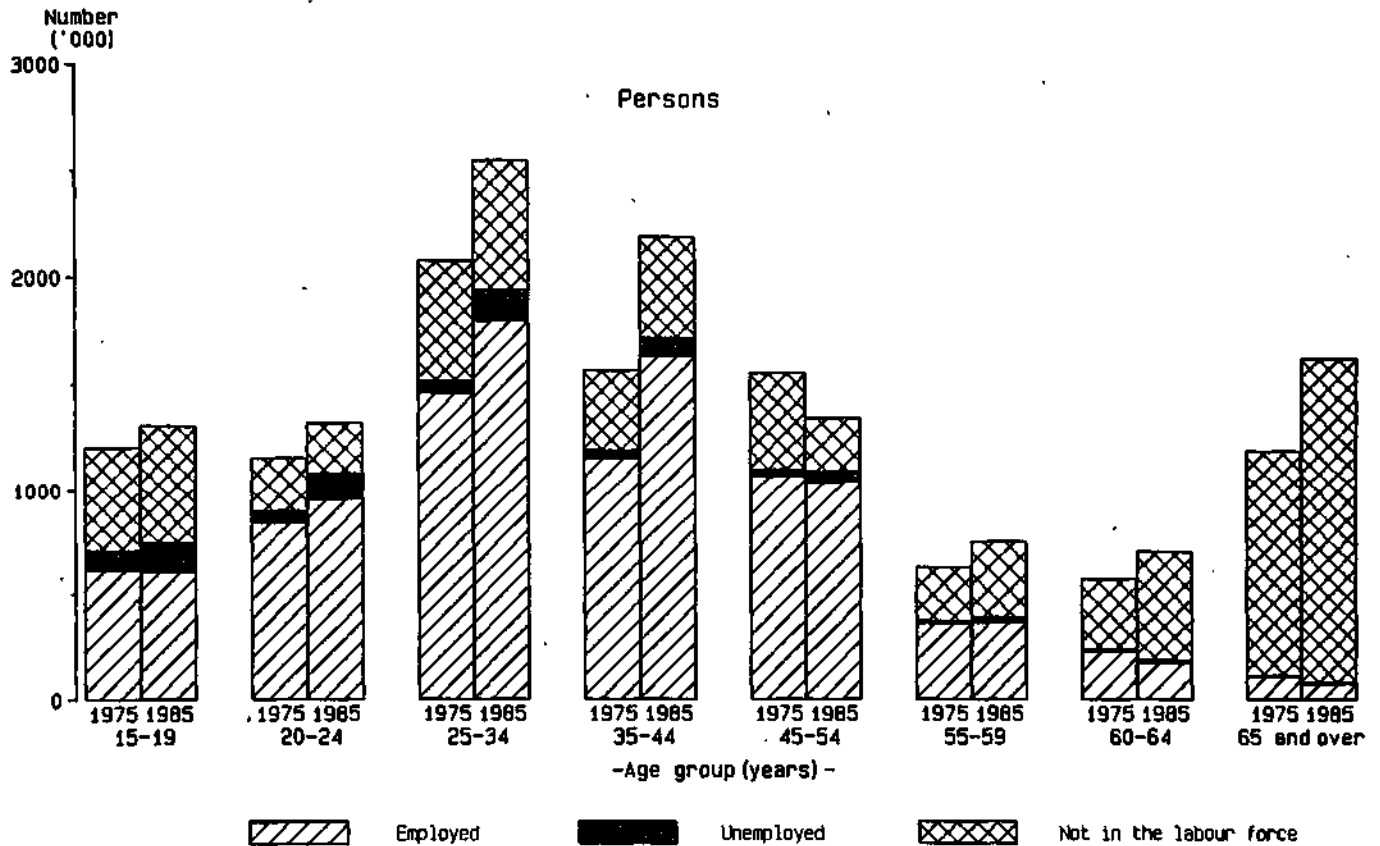


TABLE 2.3. CIVILIAN POPULATION AGED 15 AND OVER: LABOUR FORCE STATUS, AUGUST 1966 TO AUGUST 1985

August	Employed		Unemployed		Total	Labour force	Not in labour force	Civilian population aged 15 and over	Un-employment rate	Participation rate
	Full-time workers	Total	Looking for full-time work	Looking for part-time work						
— '000—					—per cent—					
MALES										
1966	3,240.2	3,365.5	37.0	*	38.9	3,404.6	650.6	4,055.2	1.1	84.0
1967	3,272.8	3,410.0	38.2	*	42.4	3,452.5	681.9	4,134.4	1.2	83.5
1968	3,346.2	3,478.2	30.8	4.9	35.8	3,514.0	711.3	4,225.3	1.0	83.2
1969	3,409.2	3,546.7	30.9	*	34.1	3,580.8	750.4	4,331.2	1.0	82.7
1970	3,533.4	3,647.7	33.4	*	36.7	3,684.4	749.0	4,433.4	1.0	83.0
1971	3,600.4	3,712.7	39.9	*	43.8	3,756.5	799.6	4,556.1	1.2	82.5
1972	3,632.3	3,757.7	67.7	7.0	74.8	3,832.5	813.8	4,646.2	2.0	82.5
1973	3,697.5	3,839.6	38.3	13.0	51.3	3,891.0	847.9	4,738.8	1.3	82.1
1974	3,710.9	3,847.1	60.0	7.9	67.9	3,914.9	920.5	4,835.4	1.7	81.0
1975	3,668.4	3,820.6	122.5	16.3	138.8	3,959.4	956.6	4,916.0	3.5	80.5
1976	3,665.6	3,836.3	142.7	13.9	156.6	3,992.9	1,000.1	4,993.0	3.9	80.0
1977	3,682.6	3,866.8	168.5	21.6	190.1	4,056.9	1,024.9	5,081.8	4.7	79.8
1978	3,642.5	3,850.9	207.9	14.3	222.2	4,073.1	1,137.7	5,210.8	5.5	78.2
1979	3,715.9	3,921.2	184.0	13.5	197.5	4,118.7	1,177.6	5,296.3	4.8	77.8
1980	3,773.8	3,982.8	193.9	15.7	209.6	4,192.4	1,193.2	5,385.6	5.0	77.9
1981	3,835.6	4,057.9	187.8	12.7	200.5	4,258.4	1,236.6	5,494.9	4.7	77.5
1982	3,782.5	4,024.3	250.4	21.3	271.7	4,296.0	1,314.6	5,610.6	6.3	76.6
1983	3,663.4	3,903.6	409.5	20.2	429.7	4,333.3	1,379.2	5,712.5	9.9	75.9
1984	3,767.3	4,012.4	359.0	22.5	381.5	4,393.9	1,411.5	5,805.4	8.7	75.7
1985	3,836.0	4,089.0	324.5	23.7	348.1	4,437.1	1,459.7	5,896.9	7.8	75.2
FEMALES										
1966	1,108.6	1,458.2	28.8	10.8	39.7	1,497.9	2,627.2	4,125.1	2.6	36.3
1967	1,150.4	1,523.0	31.8	12.5	44.4	1,567.3	2,646.6	4,214.0	2.8	37.2
1968	1,178.6	1,577.5	29.9	15.4	45.3	1,622.8	2,684.3	4,307.1	2.8	37.7
1969	1,201.1	1,636.2	27.4	17.5	44.8	1,681.1	2,731.1	4,412.2	2.7	38.1
1970	1,292.5	1,747.8	24.5	17.0	41.5	1,789.3	2,728.1	4,517.5	2.3	39.6
1971	1,339.2	1,803.0	30.2	18.7	48.9	1,851.9	2,783.1	4,635.0	2.6	40.0
1972	1,356.1	1,852.1	43.4	25.9	69.3	1,921.4	2,811.6	4,733.0	3.6	40.6
1973	1,395.4	1,943.3	28.8	25.6	54.5	1,997.8	2,826.8	4,824.6	2.7	41.4
1974	1,416.9	2,008.1	45.8	27.2	73.1	2,081.2	2,851.8	4,933.0	3.5	42.2
1975	1,378.5	2,020.8	93.0	46.6	139.7	2,160.3	2,859.6	5,019.9	6.5	43.0
1976	1,371.3	2,061.5	94.1	42.0	136.1	2,197.6	2,909.8	5,107.4	6.2	43.0
1977	1,411.9	2,128.6	114.8	54.4	169.2	2,297.8	2,904.3	5,202.1	7.4	44.2
1978	1,402.9	2,154.4	126.5	49.6	176.1	2,330.5	3,029.1	5,359.7	7.6	43.5
1979	1,397.2	2,157.4	131.8	48.1	179.9	2,337.4	3,117.0	5,454.4	7.7	42.9
1980	1,477.3	2,298.5	140.7	44.2	184.9	2,483.4	3,071.7	5,555.1	7.4	44.7
1981	1,501.5	2,335.8	135.9	44.2	180.1	2,515.9	3,154.6	5,670.5	7.2	44.4
1982	1,503.4	2,355.0	137.2	52.5	189.7	2,544.7	3,242.8	5,787.5	7.5	44.0
1983	1,486.9	2,337.4	197.9	59.3	257.1	2,594.6	3,299.1	5,893.7	9.9	44.0
1984	1,547.5	2,449.9	165.1	57.9	223.1	2,673.0	3,315.5	5,988.5	8.3	44.6
1985	1,603.2	2,557.1	162.4	60.7	223.0	2,780.1	3,302.7	6,082.8	8.0	45.7
PERSONS										
1966	4,348.8	4,823.9	65.9	12.7	78.6	4,902.5	3,277.9	8,180.3	1.6	59.9
1967	4,423.2	4,933.0	70.1	16.7	86.8	5,019.8	3,328.6	8,348.4	1.7	60.1
1968	4,524.8	5,055.6	60.7	20.4	81.1	5,136.8	3,395.5	8,532.3	1.6	60.2
1969	4,610.3	5,183.0	58.3	20.6	78.9	5,261.9	3,481.5	8,743.3	1.5	60.2
1970	4,825.9	5,395.6	57.9	20.3	78.2	5,473.8	3,477.1	8,950.9	1.4	61.2
1971	4,939.6	5,515.7	70.1	22.6	92.7	5,608.4	3,582.7	9,191.1	1.7	61.0
1972	4,988.4	5,609.9	111.1	32.9	144.0	5,753.9	3,625.3	9,379.2	2.5	61.3
1973	5,092.9	5,783.0	67.2	38.6	105.8	5,888.7	3,674.7	9,563.4	1.8	61.6
1974	5,127.8	5,855.2	105.8	35.1	140.9	5,996.1	3,772.3	9,768.4	2.4	61.4
1975	5,046.8	5,841.3	215.5	62.9	278.4	6,119.7	3,816.2	9,935.9	4.6	61.6
1976	5,036.9	5,897.8	236.8	55.9	292.7	6,190.5	3,909.8	10,100.4	4.7	61.3
1977	5,049.6	5,995.4	283.3	76.0	359.3	6,354.7	3,929.2	10,283.9	5.7	61.8
1978	5,045.3	6,005.4	334.4	63.9	398.3	6,403.7	4,166.8	10,570.5	6.2	60.6
1979	5,113.1	6,078.5	315.8	61.7	377.5	6,456.0	4,294.6	10,750.7	5.9	60.1
1980	5,251.1	6,281.4	334.6	59.9	394.5	6,675.9	4,264.9	10,940.7	5.9	61.0
1981	5,337.1	6,393.7	323.7	56.9	380.6	6,774.3	4,391.2	11,165.5	5.6	60.7
1982	5,285.9	6,379.3	387.6	73.8	461.4	6,840.7	4,557.4	11,398.1	6.7	60.0
1983	5,150.3	6,241.1	607.4	79.5	686.8	6,927.9	4,678.3	11,606.2	9.9	59.7
1984	5,314.8	6,462.3	524.2	80.5	604.6	7,066.9	4,727.0	11,793.9	8.6	59.9
1985	5,439.2	6,646.1	486.8	84.3	571.2	7,217.2	4,762.5	11,979.7	7.9	60.2

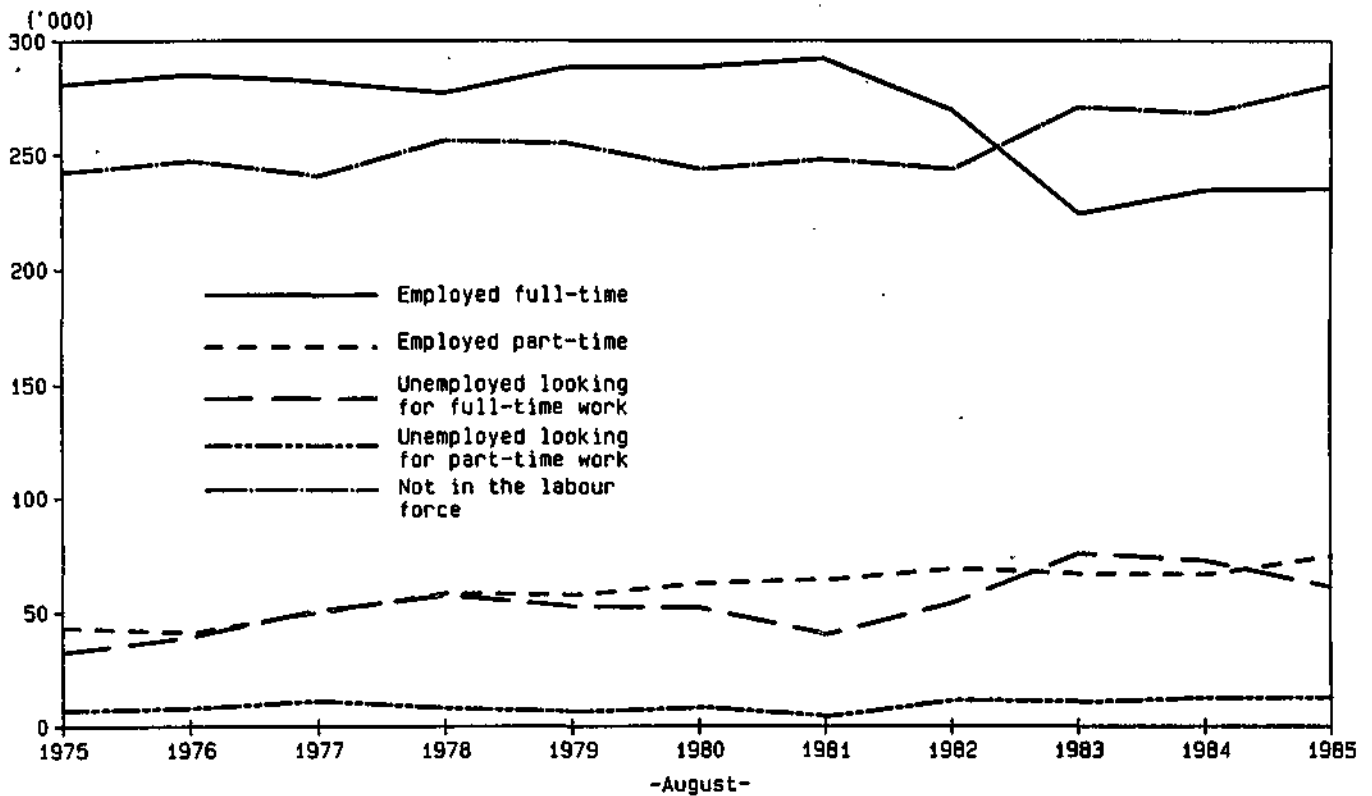
Source: The Labour Force, Australia (6203.0).

TABLE 2.4. LABOUR FORCE STATUS OF PERSONS AGED 15-19, AUGUST 1975 TO AUGUST 1985  
( ' 000)

August	Employed		Unemployed		Not in the labour force
	Full-time workers	Part-time workers	Looking for full-time work	Looking for part-time work	
MALES					
1975	281.2	43.2	32.4	7.1	242.2
1976	285.2	41.0	39.3	8.2	247.1
1977	282.0	50.1	51.0	11.3	240.4
1978	277.1	58.5	57.6	8.1	256.2
1979	288.5	57.6	52.6	6.6	254.6
1980	288.6	62.9	52.0	8.5	243.6
1981	292.1	64.6	40.4	4.5	248.0
1982	269.7	69.3	54.3	11.7	243.6
1983	224.3	66.8	75.8	10.9	271.0
1984	234.8	66.7	72.6	12.8	268.2
1985	235.5	74.6	61.2	12.8	280.8
FEMALES					
1975	240.0	51.2	40.8	10.9	255.1
1976	226.3	54.6	43.9	9.0	276.0
1977	220.9	65.5	58.2	14.9	264.5
1978	231.7	71.6	50.3	12.9	270.8
1979	209.0	71.4	61.3	10.6	288.0
1980	224.3	82.8	59.7	11.2	260.1
1981	218.5	82.5	51.4	10.4	272.6
1982	203.8	89.9	49.9	10.4	276.8
1983	186.6	92.4	64.6	15.1	270.2
1984	183.3	99.4	56.8	12.7	280.5
1985	188.4	109.7	46.7	15.0	281.9
PERSONS					
1975	521.3	94.4	73.2	17.9	497.3
1976	511.5	95.6	83.2	17.2	523.1
1977	502.8	115.6	109.2	26.1	504.9
1978	508.8	130.1	107.9	21.0	527.0
1979	497.5	128.9	113.8	17.2	542.5
1980	512.9	145.7	111.7	19.7	503.7
1981	510.6	147.1	91.7	14.8	520.7
1982	473.5	159.2	104.2	22.0	520.4
1983	410.9	159.2	140.4	26.0	541.2
1984	418.1	166.1	129.4	25.5	548.7
1985	423.9	184.3	107.9	27.8	562.7

Source: The Labour Force, Australia (6203.0).

CHART 2.d. LABOUR FORCE STATUS OF PERSONS AGED 15 TO 19,  
AUGUST 1975 TO AUGUST 1985  
MALES



FEMALES

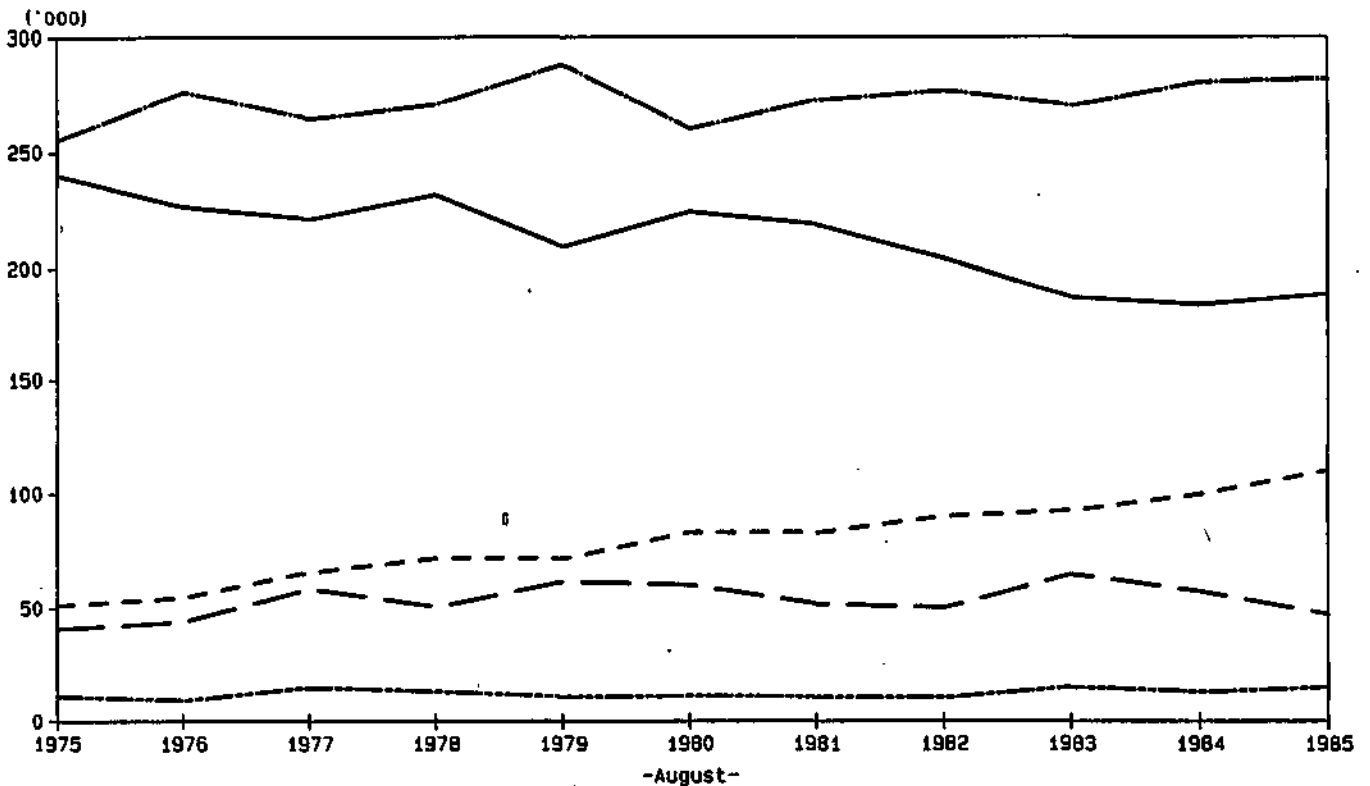


TABLE 2.5. CIVILIAN POPULATION AGED 15 AND OVER: LABOUR FORCE STATUS, STATES AND TERRITORIES, AUGUST 1985

State or Territory	Employed		Unemployed			Labour force	Not in labour force	Civilian population aged 15 and over	Un-employment rate	Partici-pation rate
	Full-time workers	Total	Looking for full-time work	Looking for part-time work	Total					
— '000—					—per cent—					
MALES										
New South Wales	1,313.3	1,397.7	130.5	7.2	137.7	1,535.4	516.8	2,052.2	9.0	74.8
Victoria	1,027.8	1,094.8	60.1	5.9	66.0	1,160.7	387.6	1,548.3	5.7	75.0
Queensland	605.5	650.4	58.3	4.3	62.6	712.9	231.6	944.5	8.8	75.5
South Australia	324.1	345.7	31.4	1.9	33.4	379.0	138.9	517.9	8.8	73.2
Western Australia	358.1	381.3	29.9	2.7	32.5	413.8	117.7	531.5	7.9	77.9
Tasmania	106.7	112.3	10.5	*	11.0	123.3	40.9	164.3	8.9	75.1
Northern Territory	39.2	40.6	1.8	*	2.0	42.6	8.9	51.5	4.7	82.8
Australian Capital Territory	61.3	66.3	2.1	*	3.1	69.3	17.5	86.8	4.4	79.8
Australia	3,836.0	4,089.0	324.5	23.7	348.1	4,437.1	1,459.7	5,896.9	7.8	75.2
FEMALES										
New South Wales	570.4	869.8	59.9	20.5	80.4	950.2	1,175.7	2,125.9	8.5	44.7
Victoria	440.0	690.9	35.0	16.2	51.2	742.2	871.1	1,613.3	6.9	46.0
Queensland	237.6	395.1	29.6	10.8	40.5	435.5	527.6	963.2	9.3	45.2
South Australia	128.0	222.8	15.9	4.7	20.6	243.4	298.1	541.5	8.5	45.0
Western Australia	135.2	236.0	14.9	5.3	20.2	256.2	274.1	530.4	7.9	48.3
Tasmania	39.2	64.9	4.1	1.7	5.8	70.7	98.9	169.6	8.1	41.7
Northern Territory	17.6	23.8	1.9	*	2.5	26.3	20.0	46.2	9.6	56.8
Australian Capital Territory	35.2	53.7	*	*	1.9	55.6	37.3	92.9	3.4	59.8
Australia	1,603.2	2,557.1	162.4	60.7	223.0	2,780.1	3,302.7	6,082.8	8.0	45.7
PERSONS										
New South Wales	1,883.7	2,267.6	190.3	27.7	218.0	2,485.6	1,692.4	4,178.0	8.8	59.5
Victoria	1,467.8	1,785.7	95.1	22.1	117.2	1,902.9	1,258.7	3,161.6	6.2	60.2
Queensland	843.2	1,045.4	87.9	15.1	103.0	1,148.4	759.2	1,907.6	9.0	60.2
South Australia	452.1	568.4	47.3	6.7	54.0	622.4	436.9	1,059.3	8.7	58.8
Western Australia	493.3	617.3	44.8	7.9	52.8	670.0	391.8	1,061.9	7.9	63.1
Tasmania	145.9	177.3	14.6	2.2	16.7	194.0	139.8	333.9	8.6	58.1
Northern Territory	56.7	64.4	3.7	*	4.5	68.9	28.8	97.7	6.6	70.5
Australian Capital Territory	96.5	120.0	3.2	1.8	4.9	124.9	54.8	179.7	3.9	69.5
Australia	5,439.2	6,646.1	486.8	84.3	571.2	7,217.2	4,762.5	11,979.7	7.9	60.2

Source: The Labour Force, Australia, August 1985 (6203.0).

TABLE 2.6. CIVILIAN LABOUR FORCE STATUS: BIRTHPLACE, AUGUST 1985

Birthplace	Employed		Unemployed		Labour force	Unemployment rate	Participation rate
	Full-time workers	Total	Looking for full-time work	Total			
	— '000 —					— per cent —	
Born in Australia	4,005.0	4,946.8	344.4	408.1	5,354.8	7.6	60.9
Born outside Australia	1,434.1	1,699.3	142.4	163.1	1,862.4	8.8	61.9
Africa	48.4	57.5	*	4.0	61.5	6.5	65.4
America	45.2	55.5	4.7	6.5	62.0	10.4	62.9
Asia	200.2	233.4	36.2	39.7	273.1	14.5	62.5
Lebanon	16.7	19.0	7.8	7.9	26.9	29.5	56.0
Vietnam	33.7	35.7	10.8	10.9	46.6	23.4	69.3
Europe	1,030.1	1,223.1	81.9	94.8	1,317.9	7.2	60.7
Germany	54.1	66.6	5.1	6.1	72.7	8.3	63.9
Greece	70.5	81.1	7.4	8.0	89.1	9.0	58.6
Italy	134.7	153.4	6.6	7.8	161.2	4.8	60.1
Malta	28.2	33.6	*	*	36.1	*	60.3
Netherlands	44.9	54.7	3.7	4.2	59.0	7.2	62.5
Poland	22.6	26.1	*	*	29.2	*	46.6
U.K. and Ireland	504.9	615.3	38.6	45.8	661.1	6.9	61.6
Yugoslavia	76.7	83.8	6.6	7.6	91.4	8.3	62.7
Oceania	110.2	129.8	16.7	18.1	147.9	12.2	72.4
New Zealand	95.1	111.7	15.0	16.2	128.0	12.7	74.4

Source: The Labour Force, Australia, August 1985 (6203.0).



**TABLE 2.7. CIVILIAN POPULATION(a), LABOUR FORCE EXPERIENCE: PARTICIPATION AT SOME TIME DURING THE REFERENCE PERIODS BY AGE, FEBRUARY 1975 TO FEBRUARY 1985**  
(per cent)

Survey conducted in February—	Age group at the time of the survey								Total
	15-19	20-24	25-34	35-44	45-54	55-59	60-64	65 and over	
MALES									
1975	67.1	95.5	98.4	98.0	96.0	90.7	77.3	26.2	84.8
1977	65.0	95.1	98.5	98.1	96.5	90.0	74.1	22.5	84.2
1979	67.2	95.2	98.6	97.4	94.5	88.1	68.4	17.0	82.7
1981	78.4	97.2	98.4	97.3	93.3	85.6	59.8	15.7	83.2
1983	75.8	97.6	98.4	97.1	94.0	84.1	59.4	12.9	82.4
1985	72.3	95.9	97.6	96.9	92.7	82.1	53.4	12.3	80.8
FEMALES									
1975	66.2	76.7	58.0	60.0	51.9	36.1	19.9	4.6	49.7
1977	61.6	77.6	58.0	61.0	55.7	36.0	17.9	4.9	50.3
1979	65.8	79.2	59.7	62.8	52.0	36.4	16.4	3.5	50.5
1981	73.5	81.8	65.9	65.8	54.0	34.0	17.7	3.8	53.6
1983	72.4	81.7	66.8	67.7	54.7	36.0	16.7	3.8	54.3
1985	72.0	82.4	68.4	69.3	57.9	33.6	15.6	2.8	54.5
PERSONS									
1975	66.7	86.2	78.5	79.4	74.3	63.0	47.7	13.6	67.1
1977	63.3	86.4	78.5	79.9	76.4	62.6	45.0	12.4	67.1
1979	66.5	87.2	79.2	80.5	73.7	62.1	41.3	9.3	66.4
1981	76.0	89.6	82.1	81.9	74.1	59.7	38.1	9.0	68.2
1983	74.1	89.7	82.5	82.7	74.9	59.9	37.2	7.8	68.2
1985	72.1	89.2	83.0	83.3	75.6	58.0	34.0	6.9	67.5

(a) Excludes persons in institutions and boarding school pupils. Details of labour force experience during the period were not obtained for these persons.

Source: Labour Force Experience, Australia (6206.0)

**TABLE 2.8. CIVILIAN POPULATION, FEBRUARY 1985: LABOUR FORCE EXPERIENCE DURING THE YEAR ENDING FEBRUARY 1985**  
(<sup>'000</sup>)

	Married males	All males	Married females	All females	Persons
Civilian population	3,637.0	5,772.4	3,614.9	5,923.7	11,696.1
Out of the labour force for the whole year	667.5	1,111.0	1,718.9	2,692.6	3,803.6
In the labour force at some time during the year	2,969.5	4,661.4	1,896.1	3,231.1	7,892.5
For 1 and under 4 weeks	6.3	41.2	71.1	114.9	156.2
4 and under 13 weeks	20.2	134.8	121.3	237.5	372.3
13 and under 26 weeks	28.3	85.9	116.2	177.5	263.4
26 and under 39 weeks	55.4	117.4	161.1	227.8	345.3
39 and under 49 weeks	123.7	218.3	201.9	298.9	517.2
49 and under 52 weeks	150.1	225.0	104.6	169.0	393.9
52 weeks	2,585.6	3,838.7	1,119.9	2,005.5	5,844.2

Source: Labour Force Experience, Australia, February 1985 (6206.0).

TABLE 2.9. LEAVERS (a) AGED 15 TO 64: LABOUR FORCE STATUS AND AGE, MAY 1985

	15 to 19 years			20 to 24 years			Total(b)		
	Males	Females	Persons	Males	Females	Persons	Males	Females	Persons
— '000 —									
In the labour force	124.5	104.9	229.3	34.3	25.8	60.1	180.4	146.3	326.7
Employed	99.4	84.5	184.0	25.8	21.2	46.9	144.8	119.3	264.1
Full-time	89.0	70.4	159.4	23.3	18.1	41.3	129.6	98.5	228.1
Part-time	10.5	14.1	24.6	*	*	5.6	15.2	20.8	36.0
Unemployed	25.0	20.3	45.4	8.6	4.6	13.2	35.6	27.0	62.6
Not in the labour force	5.0	5.7	10.7	*	*	3.9	7.7	10.9	18.6
Total	129.4	110.6	240.0	36.0	28.0	64.0	188.2	157.1	345.3
— per cent —									
Unemployment rate	20.1	19.4	19.8	25.0	17.9	21.9	19.7	18.5	19.2
Participation rate	96.2	94.9	95.6	95.5	91.9	93.9	95.9	93.1	94.6

(a) Leavers from educational institutions are persons who were full-time students at some time in the previous year but are not currently full-time students. Some patients in hospitals and sanatoria and inmates of gaols, reformatories etc, are excluded. (b) Includes leavers aged 25 to 64.

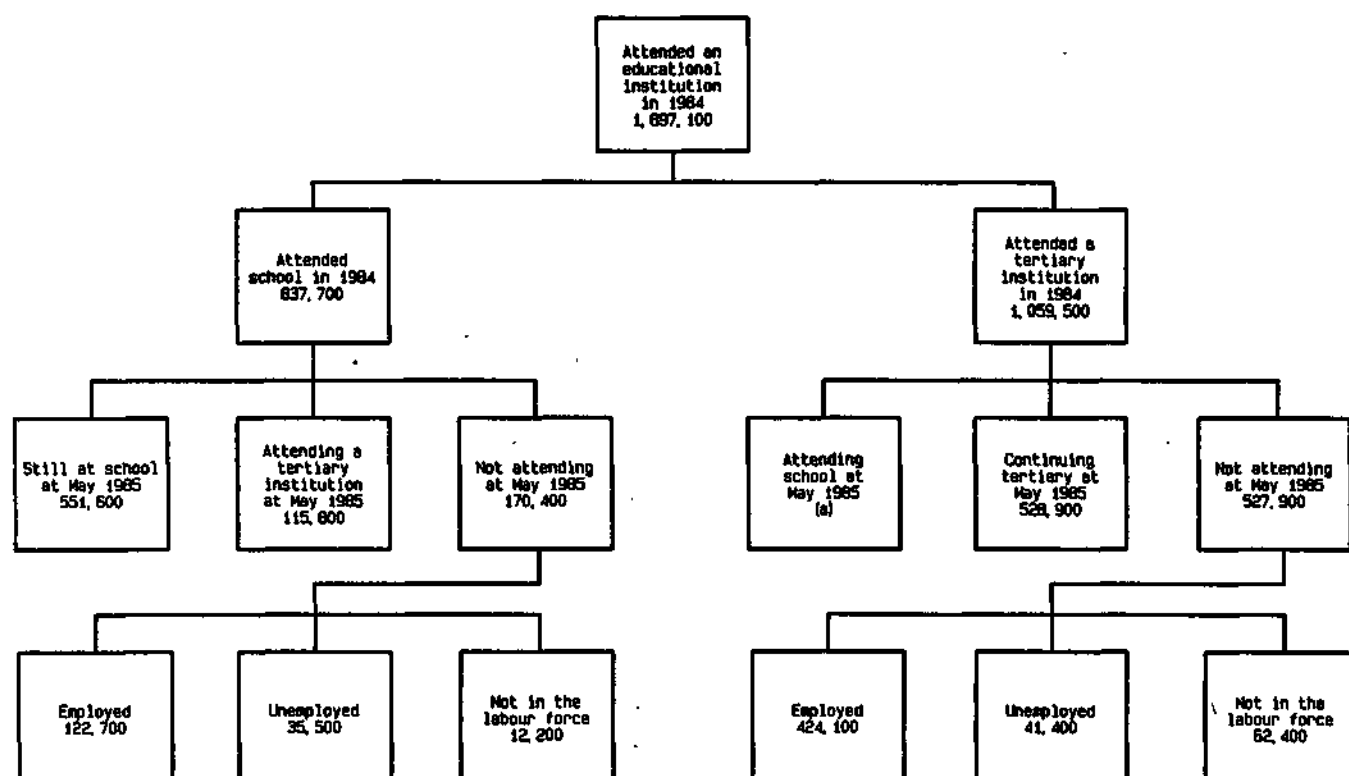
Source: *Transition from Education to Work, Australia, May 1985* (6227.0).

TABLE 2.10. PERSONS AGED 15 TO 17: WHETHER ATTENDING SCHOOL, TYPE OF ATTENDANCE AND LABOUR FORCE STATUS, MAY 1983 TO MAY 1985

	1983			1984			1985		
	Males	Females	Persons	Males	Females	Persons	Males	Females	Persons
— '000 —									
Attending school	236.4	225.4	461.8	250.9	243.2	494.1	266.4	260.8	527.2
Full-time	236.1	224.6	460.6	250.0	242.6	492.6	265.9	259.7	525.6
Part-time	*	*	*	*	*	*	*	*	*
Not attending school	148.3	137.7	286.1	150.9	132.2	283.0	148.9	129.6	278.5
In the labour force	133.2	115.2	248.4	134.6	106.8	241.4	133.8	111.3	245.2
Employed	99.0	85.4	184.5	103.4	80.1	183.5	104.6	88.5	193.1
Unemployed	34.2	29.8	64.0	31.2	26.7	57.9	29.2	22.9	52.1
Not in the labour force	15.1	22.5	37.6	16.2	25.3	41.6	15.0	18.3	33.3
Total	384.8	363.1	747.9	401.8	375.4	777.2	415.3	390.4	805.7
— per cent —									
Proportion attending school	61.4	62.1	61.7	62.4	64.8	63.6	64.1	66.8	65.4

Source: *Transition from Education to Work, Australia, May 1985* (6227.0)

**CHART 2.e. PERSONS AGED 15 TO 64 WHO ATTENDED AN EDUCATIONAL INSTITUTION IN 1984 AND LABOUR FORCE STATUS AT MAY 1985**



(a) Estimate subject to sampling variability too high for most practical uses.

Source: Transition from Education to Work, Australia, May 1985 (6227.0).

**TABLE 2.11. LEAVERS AGED 15 TO 64: TYPE OF EDUCATIONAL INSTITUTION ATTENDED FULL-TIME IN THE PREVIOUS YEAR AND LABOUR FORCE STATUS, MAY 1980 TO MAY 1985 ('000)**

	1980(a)	1981	1982	1983	1984	1985
Attended school full-time	193.1	185.9	187.2	174.4	188.1	199.1
Labour force status—						
In the labour force	185.6	176.3	174.7	162.1	176.7	190.2
Employed	143.8	144.9	140.0	116.5	133.3	152.2
Unemployed	41.8	31.4	34.7	45.5	43.4	38.0
Not in the labour force	7.5	9.6	12.5	12.4	11.4	8.9
Attended tertiary full-time	102.7	131.8	140.2	133.9	140.0	146.1
Labour force status—						
In the labour force	96.7	124.1	128.0	122.5	128.3	136.5
Employed	83.4	111.7	107.3	96.8	103.9	111.9
Unemployed	13.3	12.4	20.6	25.7	24.4	24.5
Not in the labour force	6.0	7.6	12.2	11.4	11.7	9.7
<b>Total</b>	<b>295.8</b>	<b>317.7</b>	<b>327.3</b>	<b>308.3</b>	<b>328.1</b>	<b>345.3</b>

(a) Estimates for 1980 are for persons aged 15 to 25 only.

Source: Transition from Education to Work, Australia, May 1985 (6227.0).

**TABLE 2.12 PERSONS AGED 15 TO 24 WHO ATTENDED SCHOOL IN 1984 BUT WERE NOT ATTENDING SCHOOL AT MAY 1985:  
TYPE OF SCHOOL LAST ATTENDED, WHETHER ATTENDING A TERTIARY INSTITUTION, TYPE OF ATTENDANCE AND  
LABOUR FORCE STATUS, MAY 1985.**

Type of school last attended	Employed			Unem- ployed	In the labour force	Not in the labour force	Total	Unem- ployment rate	Partici- pation rate
	Full-time	Part-time	Total						
	—'000—								
ATTENDING TERTIARY FULL TIME									
Males—									
Government/State	*	4.9	7.0	*	8.1	11.3	19.4	*	41.7
Non-government	*	*	*	*	*	7.0	10.3	*	*
Total	*	7.0	9.4	*	11.4	18.3	29.7	*	38.3
Females—									
Government/State	*	5.3	5.6	*	8.0	17.9	25.9	*	31.0
Non-government	*	5.7	5.7	*	6.9	7.7	14.5	*	47.1
Total	*	11.0	11.3	3.6	14.9	25.6	40.5	24.2	36.8
Persons—									
Government/State	*	10.2	12.6	3.5	16.1	29.2	45.4	21.7	35.6
Non-government	*	7.8	8.1	*	10.1	14.7	24.8	*	40.9
Total	*	18.0	20.7	5.6	26.3	43.9	70.2	21.2	37.4
ATTENDING TERTIARY PART-TIME									
Males—									
Government/State	20.0	*	21.0	*	22.8	*	23.0	*	99.4
Non-government	5.0	*	6.6	*	6.9	*	7.0	*	98.6
Total	25.0	*	27.6	*	29.8	*	30.0	*	99.2
Females—									
Government/State	8.1	*	9.1	*	10.3	*	10.9	*	95.0
Non-government	*	*	*	*	*	*	*	*	*
Total	10.7	*	12.3	*	13.7	*	14.2	*	96.2
Persons—									
Government/State	28.1	*	30.1	*	33.1	*	33.8	*	98.0
Non-government	7.7	*	9.8	*	10.3	*	10.4	*	99.0
Total	35.8	4.1	39.9	3.5	43.4	*	44.2	8.1	98.2
NOT ATTENDING TERTIARY									
Males—									
Government/State	43.5	5.3	48.8	16.5	65.3	4.3	69.7	25.3	93.8
Non-government	7.3	*	8.4	*	11.5	*	11.9	*	96.6
Total	50.8	6.4	57.2	19.6	76.8	4.7	81.5	25.5	94.2
Females—									
Government/State	37.7	9.1	46.8	14.3	61.1	3.5	64.6	23.4	94.6
Non-government	8.1	*	10.7	*	11.8	*	12.5	*	94.2
Total	45.8	11.7	57.5	15.4	72.9	4.2	77.2	21.1	94.5
Persons—									
Government/State	81.2	14.4	95.6	30.9	126.4	7.9	134.3	24.4	94.2
Non-government	15.4	3.8	19.1	4.1	23.2	*	24.4	17.6	95.4
Total	96.6	18.1	114.7	35.0	149.7	9.0	158.7	23.4	94.3
TOTAL									
Males—									
Government/State	65.7	11.2	76.9	19.4	96.2	15.8	112.1	20.1	85.9
Non-government	12.6	4.8	17.4	4.3	21.7	7.5	29.2	19.7	74.4
Total	78.2	16.0	94.3	23.7	117.9	23.3	141.2	20.1	83.5
Females—									
Government/State	46.1	15.4	61.5	18.0	79.5	22.0	101.4	22.7	78.4
Non-government	10.7	8.9	19.6	*	22.0	8.4	30.4	*	72.3
Total	56.8	24.2	81.1	20.4	101.5	30.4	131.8	20.1	77.0
Persons—									
Government/State	111.8	26.6	138.3	37.4	175.7	37.8	213.5	21.3	82.3
Non-government	23.3	13.7	37.0	6.7	43.7	15.9	59.6	15.2	73.3
Total	135.1	40.3	175.3	44.1	219.4	53.7	273.0	20.1	80.4

Source: Transition from Education to Work, Australia, May 1985 (6227.0).

TABLE 2.13. CIVILIAN POPULATION AGED 15 AND OVER: EDUCATIONAL ATTAINMENT AND LABOUR FORCE STATUS, FEBRUARY 1985

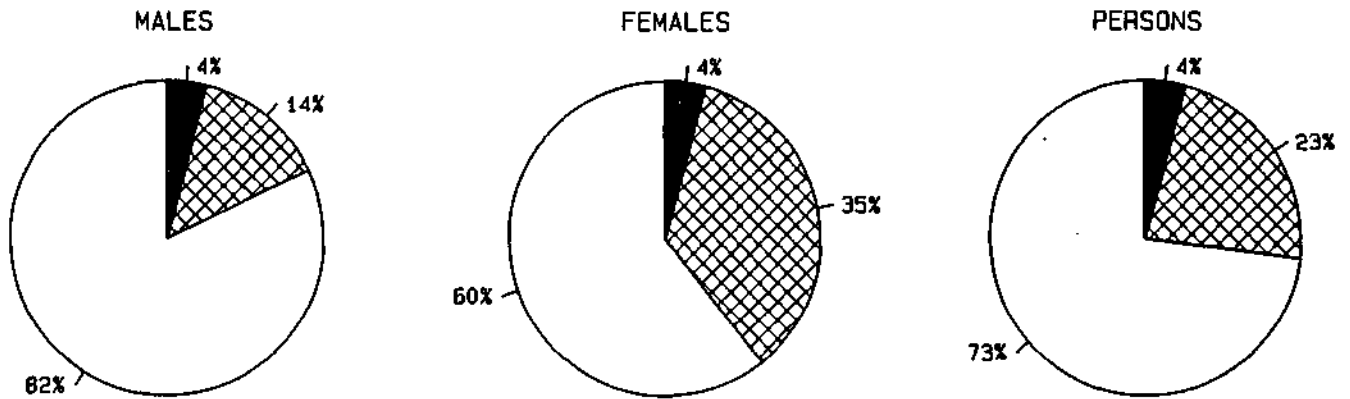
Educational attainment	Employed			Unem- ployed	In the labour force	Not in the labour force	Total	Partici- pation rate(a)	Unem- ployment rate
	Full- time	Part- time	Total						
	— '000 —								
MALES									
With post-school qualifications	1,825.4	68.8	1,894.1	94.4	1,988.5	320.0	2,308.5	86.1	4.7
Degree	416.3	19.2	435.6	12.5	448.0	57.0	505.1	88.7	2.8
Trade; technical or other certificate	1,362.9	47.1	1,410.0	77.7	1,487.7	256.2	1,743.9	85.3	5.2
Other	46.1	*	48.6	*	52.8	6.7	59.5	88.7	*
Without post-school qualifications	2,011.9	130.8	2,142.7	284.0	2,426.7	803.0	3,229.7	75.1	11.7
Attended highest level of secondary school available	459.6	45.8	505.4	60.3	565.7	107.3	673.1	84.1	10.7
Did not attend highest level of secondary school available	1,546.9	84.8	1,631.7	222.9	1,854.7	681.8	2,536.5	73.1	12.0
Left at age—									
18 years or over	26.8	*	29.7	5.5	35.2	6.8	41.9	83.8	15.6
16 or 17 years	519.5	24.3	543.7	73.8	617.5	76.9	694.4	88.9	11.9
14 or 15 years	846.6	46.6	893.1	125.3	1,018.4	424.4	1,442.8	70.6	12.3
13 years or under	154.1	11.1	165.2	18.4	183.6	173.7	357.3	51.4	10.0
Never attended school	5.3	*	5.5	*	6.3	13.9	20.1	31.2	*
Still at school(b)	*	33.9	35.7	12.0	47.7	186.5	234.2	20.4	25.1
Total	3,839.1	233.5	4,072.5	390.4	4,462.9	1,309.5	5,772.4	77.3	8.7
FEMALES									
With post-school qualifications	700.8	311.1	1,011.8	70.6	1,082.4	584.6	1,667.0	64.9	6.5
Degree	175.0	52.2	227.2	11.2	238.4	73.0	311.4	76.6	4.7
Trade; technical or other certificate	501.2	241.6	742.8	53.7	796.5	482.4	1,278.8	62.3	6.7
Other	24.6	17.2	41.8	5.7	47.5	29.3	76.8	61.9	12.0
Without post-school qualifications	905.7	536.7	1,442.3	192.8	1,635.2	2,386.6	4,021.8	40.7	11.8
Attended highest level of secondary school available	219.1	108.8	327.9	41.2	369.1	286.7	655.7	56.3	11.2
Did not attend highest level of secondary school available	686.0	427.3	1,113.3	151.7	1,265.0	2,070.0	3,335.0	37.9	12.0
Left at age—									
18 years or over	10.6	5.3	15.8	*	20.1	12.7	32.9	61.3	*
16 or 17 years	282.9	128.1	411.0	61.6	472.6	423.7	896.3	52.7	13.0
14 or 15 years	344.4	266.0	610.4	77.7	688.2	1,325.5	2,013.6	34.2	11.3
13 years or under	48.1	28.0	76.1	8.0	84.1	308.1	392.2	21.4	9.5
Never attended school	*	*	*	*	*	30.0	31.1	*	*
Still at school(b)	*	48.9	49.6	19.9	69.4	165.5	234.9	29.6	28.6
Total	1,607.1	896.6	2,503.7	283.2	2,787.0	3,136.7	5,923.7	47.0	10.2
PERSONS									
With post-school qualifications	2,526.1	379.9	2,906.0	164.9	3,070.9	904.6	3,975.5	77.2	5.4
Degree	591.3	71.5	662.8	23.7	686.4	130.0	816.4	84.1	3.4
Trade; technical or other certificate	1,864.1	288.7	2,152.8	131.4	2,284.2	738.6	3,022.8	75.6	5.8
Other	70.7	19.7	90.4	9.9	100.3	36.0	136.3	73.6	9.9
Without post-school qualifications	2,917.6	667.4	3,585.0	476.8	4,061.9	3,189.6	7,251.5	56.0	11.7
Attended highest level of secondary school available	678.7	154.6	833.3	101.5	934.8	394.0	1,328.8	70.3	10.9
Did not attend highest level of secondary school available	2,233.0	512.1	2,745.1	374.6	3,119.7	2,751.8	5,871.4	53.1	12.0
Left at age—									
18 years or over	37.4	8.1	45.5	9.8	55.3	19.5	74.8	73.9	17.7
16 or 17 years	802.4	152.4	954.7	135.4	1,090.1	500.6	1,590.7	68.5	12.4
14 or 15 years	1,191.0	312.6	1,503.6	203.0	1,706.6	1,749.9	3,456.5	49.4	11.9
13 years or under	202.2	39.0	241.3	26.4	267.7	481.8	749.5	35.7	9.9
Never attended school	5.9	*	6.6	*	7.4	43.8	51.2	14.4	*
Still at school(b)	*	82.8	85.3	31.8	117.2	352.0	469.2	25.0	27.2
Total	5,446.2	1,130.1	6,576.3	673.6	7,249.9	4,446.2	11,696.1	62.0	9.3

(a) Because it is not practicable to ascertain details of educational attainment for persons in institutions and boarding school pupils, participation rates have been calculated by using population estimates which exclude those in institutions and boarding school pupils. Participation rates and estimates of persons not in the labour force therefore differ from those given in other tables and charts. (b) Aged 15 to 20 years only.

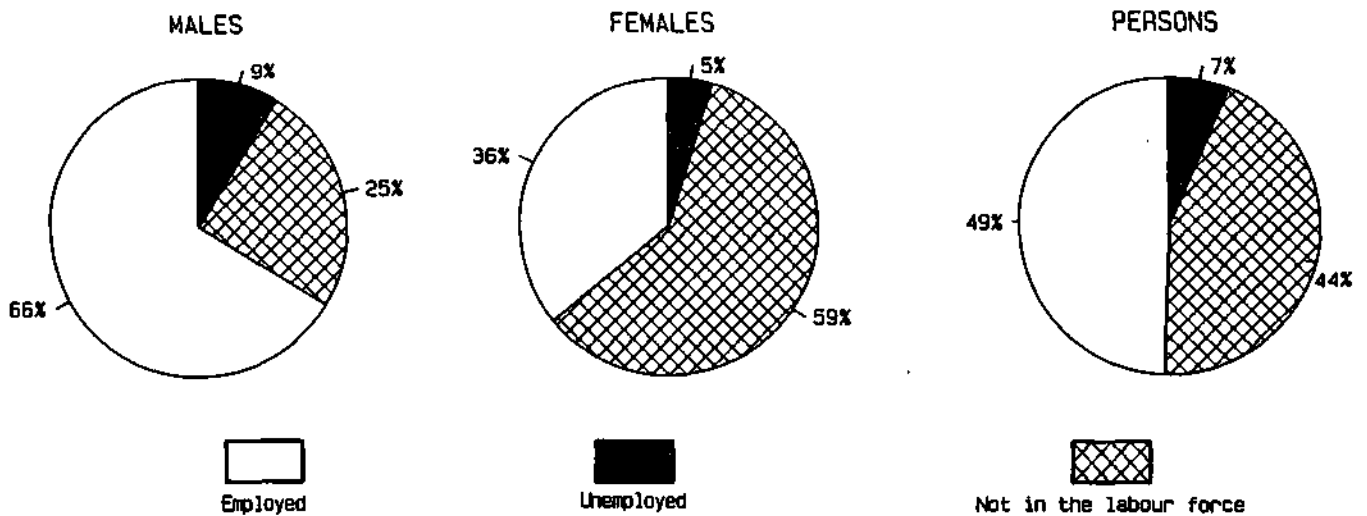
Source: Labour Force Status and Educational Attainment, Australia, February 1985 (6235.0).

**CHART 2.f. CIVILIAN POPULATION AGED 15 AND OVER:  
LABOUR FORCE STATUS AND EDUCATIONAL ATTAINMENT (a),  
FEBRUARY 1985**

-With post-school qualifications-



-Without post-school qualifications-

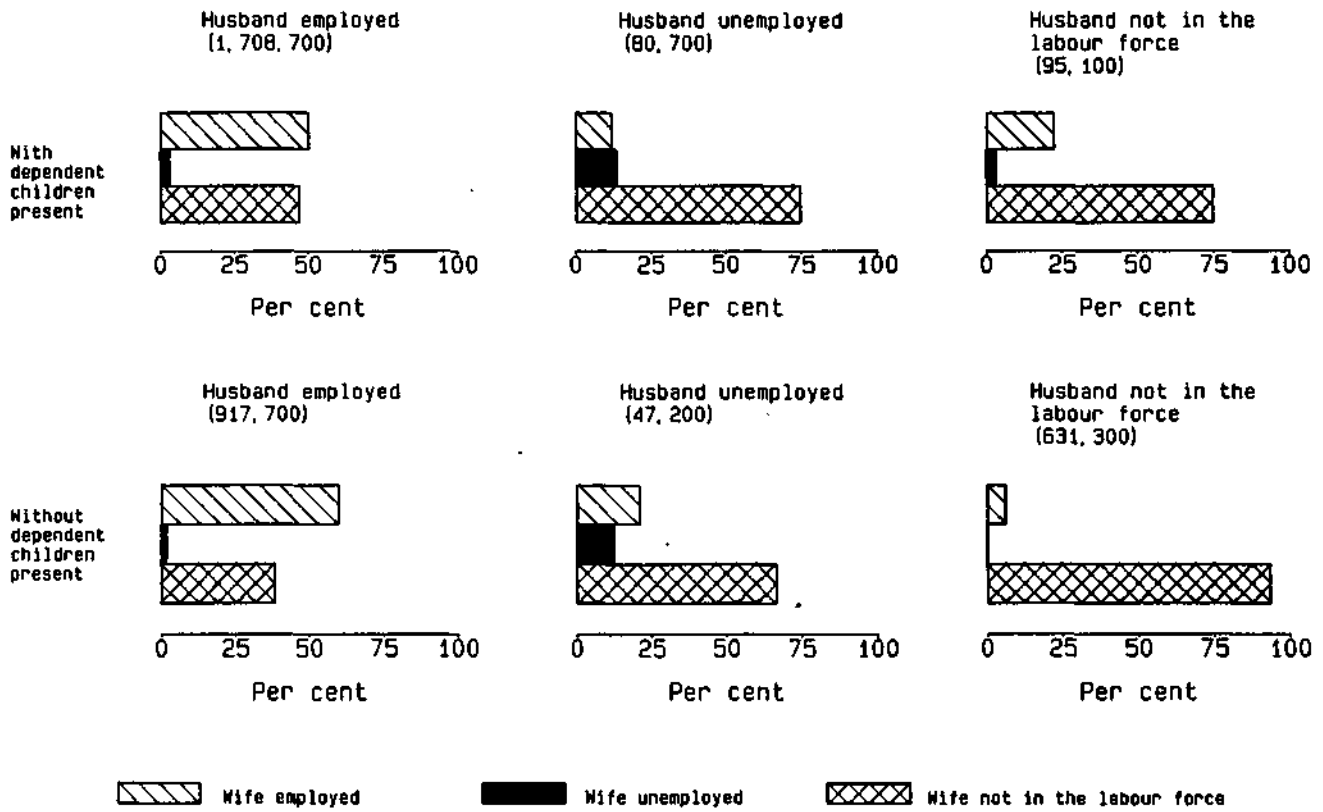


(a) Excludes persons in institutions and boarding school pupils from whom details of educational attainment were not obtained and persons aged 15 to 20 years still at school.

Source: Labour Force Status and Educational Attainment, Australia, February 1985 (6235.0).

CHART 2.g. LABOUR FORCE STATUS OF HUSBAND, WIFE OR FAMILY HEAD  
JULY 1985

(a) MARRIED-COUPLE FAMILIES



(b) OTHER FAMILIES

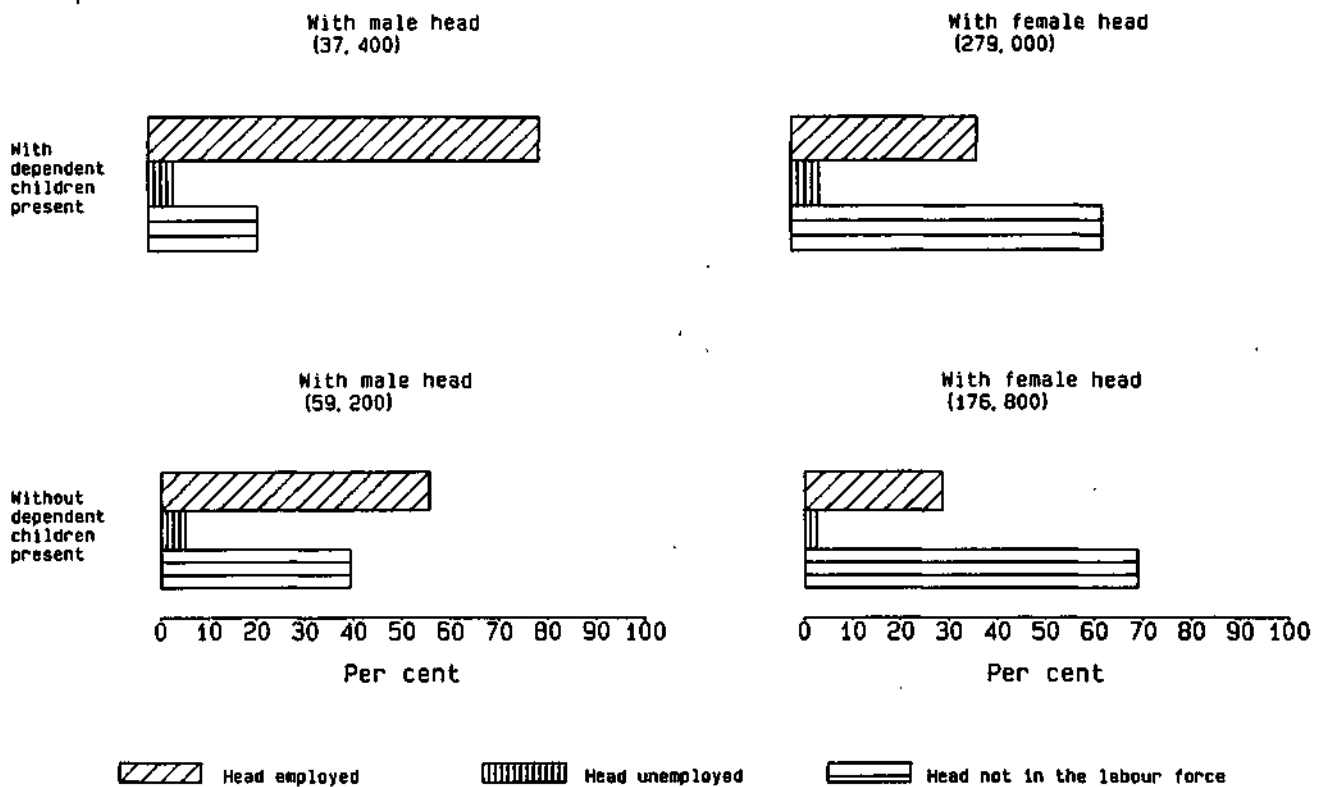


TABLE 2.14. FAMILY STATUS AND LABOUR FORCE STATUS OF PERSONS AGED 15 AND OVER(a), JULY 1985

	Unemployed										
	Employed			Looking for full- time work	Total	Labour force	Not in the labour force	Total	Unemp- loyment rate	Partici- pation rate	
	Full- time workers	Part- time workers	Total								
— '000—										—per cent—	
MALES											
Member of a family	3,191.4	197.0	3,388.4	245.7	260.6	3,649.0	1,087.4	4,736.3	7.1	77.0	
Husband	2,530.3	96.1	2,626.4	124.4	127.9	2,754.2	726.3	3,480.6	4.6	79.1	
With dependent children present	1,664.9	43.7	1,708.7	79.9	80.7	1,789.4	95.1	1,884.4	4.5	95.0	
Without dependent children present	865.3	52.4	917.7	44.5	47.2	964.9	631.3	1,596.2	4.9	60.5	
Not-married family head	57.2	3.5	60.7	4.5	4.7	65.5	31.2	96.6	7.2	67.7	
With dependent children present	25.8	*	27.8	*	*	29.5	7.8	37.4	*	79.0	
Without dependent children present	31.4	*	32.9	*	*	35.9	23.3	59.2	*	60.6	
Full-time student aged 15-20	10.5	61.8	72.3	6.0	15.4	87.6	238.3	326.0	17.6	26.9	
Other child(b) of family head	547.3	34.4	581.7	98.1	99.6	681.3	62.5	743.8	14.6	91.6	
Other relative	46.1	*	47.3	12.8	13.0	60.3	29.1	89.4	21.5	67.5	
Not a member of a family	490.9	41.9	532.9	54.2	56.7	589.6	182.4	772.0	9.6	76.4	
Living alone	233.6	16.8	250.4	21.6	22.5	272.9	137.5	410.4	8.2	66.5	
Not living alone	257.3	25.2	282.5	32.6	34.2	316.7	44.9	361.6	10.8	87.6	
Total	3,682.3	239.0	3,921.3	299.9	317.3	4,238.6	1,269.7	5,508.3	7.5	76.9	
FEMALES											
Member of a family	1,220.2	858.1	2,078.3	113.8	174.2	2,252.5	2,531.2	4,783.7	7.7	47.1	
Wife	767.2	683.8	1,451.0	46.3	83.8	1,534.9	1,883.4	3,418.3	5.5	44.9	
With dependent children present	370.5	493.5	864.0	30.8	62.4	926.4	907.5	1,833.9	6.7	50.5	
Without dependent children present	396.8	190.3	587.0	15.5	21.5	608.5	975.8	1,584.3	3.5	38.4	
Not-married family head	97.0	52.3	149.3	12.4	19.7	169.0	286.9	455.9	11.6	37.1	
With dependent children present	58.6	40.1	98.7	8.7	15.2	113.9	165.1	279.0	13.3	40.8	
Without dependent children present	38.4	12.2	50.6	3.7	4.5	55.0	121.8	176.8	8.1	31.1	
Full-time student aged 15-20	4.2	78.1	82.2	6.3	19.5	101.7	223.1	324.8	19.1	31.3	
Other child(b) of family head	330.5	40.0	370.5	46.2	48.4	418.9	48.8	467.7	11.6	89.6	
Other relative	21.2	4.0	25.2	*	*	28.0	89.0	117.1	*	23.9	
Not a member of a family	305.0	55.0	360.0	27.8	33.1	393.1	446.8	839.8	8.4	46.8	
Living alone	132.1	25.7	157.8	6.2	8.3	166.1	398.8	564.9	5.0	29.4	
Not living alone	173.0	29.2	202.2	21.6	24.8	227.0	48.0	274.9	10.9	82.6	
Total	1,525.2	913.1	2,438.3	141.6	207.3	2,645.6	2,978.0	5,623.5	7.8	47.0	
PERSONS											
Member of a family	4,411.5	1,055.2	5,466.7	359.5	434.8	5,901.5	3,618.6	9,520.1	7.4	62.0	
Husband or wife	3,297.5	779.9	4,077.4	170.7	211.7	4,289.1	2,609.7	6,898.8	4.9	62.2	
With dependent children present	2,035.4	537.2	2,572.7	110.7	143.1	2,715.7	1,002.6	3,718.3	5.3	73.0	
Without dependent children present	1,262.1	242.6	1,504.8	60.0	68.6	1,573.4	1,607.1	3,180.5	4.3	49.5	
Not-married family head	154.2	55.8	210.0	16.9	24.4	234.4	318.0	552.5	10.4	42.4	
With dependent children present	84.4	42.1	126.6	10.3	16.9	143.5	172.9	316.4	11.8	45.3	
Without dependent children present	69.8	13.7	83.5	6.6	7.5	90.9	145.1	236.1	8.2	38.5	
Full-time student aged 15-20	14.7	139.8	154.5	12.3	34.8	189.3	461.5	650.8	18.4	29.1	
Other child(b) of family head	877.8	74.4	952.2	144.3	148.0	1,100.2	111.2	1,211.5	13.5	90.8	
Other relative	67.3	5.2	72.6	15.4	15.8	88.4	118.1	206.4	17.9	42.8	
Not a member of a family	796.0	96.9	892.9	82.0	89.8	982.7	629.1	1,611.8	9.1	61.0	
Living alone	365.7	42.5	408.2	27.8	30.8	439.0	536.3	975.3	7.0	45.0	
Not living alone	430.3	54.4	484.7	54.2	59.0	543.7	92.8	636.5	10.9	85.4	
Total	5,207.5	1,152.1	6,359.6	441.5	524.6	6,884.2	4,247.7	11,131.9	7.6	61.8	

(a) Excludes 829,100 persons for whom family status was not determined. (b) Aged 15 and over.

Source: Labour Force Status and Other Characteristics of Families, Australia, July 1985 (6224.0).



**TABLE 2.15 FAMILY STATUS: LABOUR FORCE STATUS AND AGE OF PERSONS AGED 15 AND OVER, JULY 1985**  
(000)

	Age groups						Total
	15-24	25-34	34-44	45-54	55-64	65 and over	
<i>Member of a family</i>	2072.1	2058.5	1924.8	1330.9	1162.9	971.0	9520.1
Husband or wife with dependent children present	175.8	1,348.5	1,513.6	558.5	110.5	11.5	3,718.3
Employed	73.7	869.3	1,145.0	414.2	68.1	*	2,572.7
Unemployed	12.7	60.5	49.8	16.3	3.9	*	143.1
Not in the labour force	89.4	418.8	318.8	128.0	38.4	9.2	1,002.6
Husband or wife without dependent children present	210.4	372.2	221.9	650.6	942.3	783.1	3,180.5
Employed	170.7	334.1	167.1	420.0	357.7	55.2	1,504.8
Unemployed	12.1	10.5	6.2	17.8	21.7	*	68.6
Not in the labour force	27.7	27.6	48.6	212.8	562.9	727.5	1,607.1
Not-married family head with dependent children present	41.5	106.1	111.2	43.7	11.5	*	316.4
Employed	8.5	37.5	57.5	19.8	*	*	126.6
Unemployed	*	6.6	5.9	*	*	*	16.9
Not in the labour force	30.0	62.0	47.8	22.5	8.3	*	172.9
Not-married family head without dependent children present	10.7	17.0	21.0	45.0	57.9	84.4	236.1
Employed	8.7	15.2	15.7	25.5	15.6	*	83.5
Unemployed		4.7		*	*	*	7.5
Not in the labour force		4.5		17.6	41.5	81.6	145.1
Full-time student aged 15-20	650.8	..	..	..	..	..	650.8
Employed	154.5	..	..	..	..	..	154.5
Unemployed	34.8	..	..	..	..	..	34.8
Not in the labour force	461.5	..	..	..	..	..	461.5
Other child of family head	935.4	190.9	48.4	20.9	12.8	*	1,211.5
Employed	751.9	151.7	31.3	12.0	5.2	*	952.2
Unemployed	123.9	19.5	4.6	*	*	*	148.0
Not in the labour force	59.7	19.7	13.7	7.8	7.4	*	111.2
Other relative	47.3	23.6	8.7	12.2	28.0	86.6	206.4
Employed	33.2	18.1	6.0	6.6	6.3	*	72.6
Unemployed	9.2	4.4	*	*	*	*	15.8
Not in the labour force	4.9	3.9	4.6	20.5	84.2		118.1
<i>Not a member of a family</i>	346.4	350.0	160.5	125.4	196.9	432.5	1,611.8
Living alone	62.4	134.5	104.3	98.3	170.2	405.5	975.3
Employed	54.3	121.7	91.6	68.5	57.6	14.6	408.2
Unemployed	5.0	7.8	6.9	6.6	4.6	*	30.8
Not in the labour force	*	5.1	5.9	23.3	108.0	390.9	536.3
Not living alone	284.0	215.5	56.2	27.1	26.7	27.0	636.5
Employed	222.2	184.9	47.0	19.3	9.5	*	484.7
Unemployed	35.2	17.0	4.7	*	*	*	59.0
Not in the labour force	26.6	13.5	5.9	6.3	15.2	25.3	92.8
<b>Total</b>	<b>2,418.5</b>	<b>2,408.5</b>	<b>2,085.3</b>	<b>1,456.2</b>	<b>1,359.8</b>	<b>1,403.5</b>	<b>11,131.9</b>

Source: Labour Force Status and Other Characteristics of Families, Australia, July 1985 (6224.0)

**TABLE 2.16. ALL FAMILIES : TYPE OF FAMILY, NUMBER OF DEPENDENT CHILDREN PRESENT,  
AND EMPLOYMENT STATUS(a) OF FAMILY MEMBERS, JULY 1984 AND JULY 1985**  
(<sup>'000 families</sup>)

Number of dependent children present	None employed		One employed		Two or more employed		Total	
	July 1984	July 1985	July 1984	July 1985	July 1984	July 1985	July 1984	July 1985
<b>MARRIED-COUPLE FAMILIES</b>								
None	517.4	556.0	361.9	358.9	678.8	681.3	1,558.1	1,596.2
One or more	121.8	120.2	814.5	768.9	945.8	995.3	1,882.1	1,884.4
One	43.1	42.7	227.5	208.6	330.1	344.7	600.7	596.1
Two	43.7	41.3	347.7	334.7	400.6	407.8	792.0	783.8
Three	21.5	22.3	179.7	167.1	160.7	184.6	361.9	374.1
Four or more	13.6	13.8	59.6	58.5	54.4	58.2	127.5	130.5
Total	639.3	676.2	1,176.4	1,127.8	1,624.5	1,676.6	3,440.2	3,480.6
<b>OTHER FAMILIES WITH MALE HEAD</b>								
None	11.5	11.3	19.1	20.1	26.8	27.8	57.4	59.2
One or more	10.6	7.9	23.4	23.1	5.5	6.4	39.5	37.4
One	5.2	4.9	12.6	13.5	*	5.0	22.0	23.5
Two	*	*	8.2	6.4	*	*	12.4	9.3
Three	*	*	*	*	*	*	*	3.7
Four or more	*	*	*	*	*	*	*	*
Total	22.1	19.2	42.6	43.2	32.3	34.2	96.9	96.6
<b>OTHER FAMILIES WITH A FEMALE HEAD</b>								
None	48.0	50.1	72.6	71.7	51.4	55.1	171.9	176.8
One or more	157.9	153.9	88.7	100.1	27.6	25.1	274.3	279.0
One	76.3	76.4	51.0	54.2	16.4	12.9	143.7	143.5
Two	55.0	49.3	26.1	32.5	6.8	9.4	87.9	91.2
Three	19.2	19.9	9.2	10.3	*	*	31.7	32.6
Four or more	7.4	8.3	*	*	*	*	10.9	11.7
Total	205.9	204.0	161.3	171.7	79.0	80.1	446.2	455.9
<b>OTHER FAMILIES : TOTAL</b>								
None	59.4	61.4	91.7	91.8	78.2	82.8	229.3	236.1
One or more	168.5	161.8	112.2	123.2	33.1	31.5	313.8	316.4
One	81.5	81.3	63.6	67.7	20.6	18.0	165.7	167.0
Two	58.5	51.0	34.3	38.9	7.5	10.6	100.3	100.5
Three	20.5	20.6	11.4	13.1	*	*	35.7	36.2
Four or more	8.0	8.9	*	*	*	*	12.1	12.6
Total	227.9	223.2	203.8	215.0	111.3	114.3	543.1	552.5
<b>ALL FAMILIES</b>								
None	576.9	617.4	453.6	450.7	757.0	764.1	1,787.4	1,832.2
One or more	290.4	282.0	926.7	892.1	978.9	1,026.8	2,195.9	2,200.9
One	124.6	124.1	291.2	276.4	350.7	362.6	766.4	763.1
Two	102.2	92.3	382.0	373.6	408.1	418.4	892.3	884.3
Three	42.0	42.9	191.1	180.3	164.4	187.2	397.5	410.3
Four or more	21.5	22.7	62.5	61.8	55.6	58.6	139.6	143.2
Total	867.2	899.4	1,380.3	1,342.8	1,735.9	1,790.9	3,983.3	4,033.1

(a) Employment status refers to persons aged 15 and over only.

Source: Labour Force Status and Other Characteristics of Families, Australia, July 1985 (6224.0).

**TABLE 2.17. MARRIED-COUPLE FAMILIES : LABOUR FORCE STATUS OF HUSBAND AND WIFE, AND AGE OF YOUNGEST DEPENDENT CHILD PRESENT, JULY 1985**  
( ' 000 families)

	Wife employed			Wife unemployed	Wife in the labour force	Wife not in the labour force	Total
	Full-time	Part-time	Total				
HUSBAND EMPLOYED FULL-TIME							
Families with dependent children present	354.5	481.2	835.6	48.4	884.0	780.9	1,664.9
Age of youngest dependent child—							
0- 4	86.7	169.2	255.9	17.4	273.4	438.5	711.8
5- 9	95.9	138.6	234.4	18.6	253.1	153.8	406.9
10-14	114.8	125.2	240.0	10.1	250.1	127.8	377.9
15-20	57.1	48.2	105.3	*	107.5	60.8	168.3
Families without dependent children present	364.2	162.5	526.7	14.8	541.5	323.8	865.3
Total	718.7	643.6	1,362.3	63.2	1,425.5	1,104.8	2,530.3
HUSBAND EMPLOYED : TOTAL							
Families with dependent children present	362.5	494.0	856.5	50.8	907.3	801.4	1,708.7
Age of youngest dependent child—							
0- 4	90.1	173.6	263.7	18.7	282.3	447.7	730.0
5- 9	97.7	142.5	240.2	19.1	259.3	158.6	417.8
10-14	117.0	129.2	246.2	10.4	256.5	131.9	388.4
15-20	57.7	48.8	106.5	*	109.2	63.2	172.4
Families without dependent children present	374.3	174.3	548.5	15.4	563.9	353.8	917.7
Total	736.8	668.3	1,405.1	66.1	1,471.2	1,155.2	2,626.4
HUSBAND IN THE LABOUR FORCE							
Families with dependent children present	368.2	497.9	866.1	61.6	927.7	861.6	1,789.4
Age of youngest dependent child—							
0- 4	91.2	174.2	265.4	23.3	288.7	485.0	773.7
5- 9	99.0	143.3	242.3	21.4	263.7	168.5	432.1
10-14	118.9	131.1	250.0	13.5	263.5	141.0	404.5
15-20	59.1	49.3	108.4	3.5	111.9	67.1	179.0
Families without dependent children present	379.9	178.6	558.5	21.1	579.6	385.3	964.9
Total	748.1	676.5	1,424.6	82.8	1,507.3	1,246.9	2,754.2
TOTAL							
Families with dependent children present	379.5	507.9	887.4	64.5	951.9	932.5	1,884.4
Age of youngest dependent child—							
0- 4	96.3	175.1	271.3	24.2	295.5	503.0	798.5
5- 9	101.1	146.4	247.5	21.9	269.5	181.7	451.1
10-14	121.1	134.9	256.0	14.7	270.8	165.2	435.9
15-20	61.0	51.6	112.5	3.6	116.2	82.7	198.8
Families without dependent children present	404.7	192.5	597.2	22.0	619.2	377.0	996.2
Total	784.2	700.4	1,484.6	86.4	1,571.1	1,309.5	2,880.6

Source: Labour Force Status and Other Characteristics of Families, Australia, July 1985 (6224.0).

**TABLE 2.18. OTHER FAMILIES : LABOUR FORCE STATUS OF FAMILY HEAD AND AGE OF YOUNGEST DEPENDENT CHILD PRESENT, JULY 1985**  
( ' 000 families)

	Family head employed			Family head unemployed	Family head in the labour force	Family head not in the labour force	Total
	Full-time	Part-time	Total				
Families with dependents children present	84.4	42.1	126.6	16.9	143.5	172.9	316.4
Age of youngest dependent child—							
0-4	13.7	8.5	22.1	5.4	27.6	60.6	88.2
5-9	18.4	13.0	31.4	4.5	36.0	45.8	81.8
10-14	32.9	13.9	46.8	5.5	52.3	45.8	98.1
15-20	19.5	6.7	26.2	*	27.7	20.7	48.4
Families without dependent children present	69.8	13.7	83.5	7.5	90.9	145.1	236.1
Total	154.2	55.8	210.0	24.4	234.4	318.0	552.5

Source: Labour Force Status and Other Characteristics of Families, Australia, July 1985 (6224.0).

**TABLE 2.19. CIVILIAN POPULATION AGED 15 AND OVER: WHETHER IN THE LABOUR FORCE AND WHETHER HAD RE-ENTERED THE LABOUR FORCE, MAY 1985**  
(000)

<i>Whether in the labour force and whether had re-entered the labour force</i>	<i>Males</i>	<i>Females</i>	<i>Persons</i>
<i>Persons aged 15 and over</i>	5,871.3	6,056.1	11,927.4
Out of the labour force	1,402.2	3,205.6	4,607.8
In the labour force	4,469.1	2,850.5	7,319.5
Persons who had re-entered the labour force	20.3	136.5	156.8
Working	14.6	97.3	111.8
Looking for work	5.7	39.3	45.0
Other	4,448.7	2,714.0	7,162.7

Source: *Persons Who Had Re-entered the Labour Force, Australia, May 1985* (6264.0).

**TABLE 2.20. PERSONS WHO HAD RE-ENTERED THE LABOUR FORCE: SUMMARY OF CHARACTERISTICS AND WHETHER WORKING OR LOOKING FOR WORK, MAY 1985**  
(000)

	<i>Working</i>			<i>Looking for Work</i>			<i>Total</i>		
	<i>Males</i>	<i>Females</i>	<i>Persons</i>	<i>Males</i>	<i>Females</i>	<i>Persons</i>	<i>Males</i>	<i>Females</i>	<i>Persons</i>
<i>Age group (years)—</i>									
15-24	*	7.1	9.6	*	4.1	4.6	*	11.2	14.2
25-34	5.5	51.6	57.1	3.5	21.4	23.5	7.6	73.0	80.6
35-44	4.0	29.8	32.1	10.4	11.8	3.7	40.2	43.9	
45-54	*	7.2	8.8	*	*	5.1	*	9.7	12.2
55 and over	*	*	4.2	*	*	*	3.6	*	6.0
<i>Family status—</i>									
Member of a family	9.7	90.0	99.7	3.7	35.6	39.3	13.4	125.7	139.1
Husband or wife	7.2	80.6	87.8	*	29.0	32.0	10.2	109.6	119.8
With children aged 0-14 present	*	70.2	73.3	*	26.8	28.3	4.5	97.1	101.6
Without children aged 0-14 present	4.2	10.3	14.5	*	*	3.7	5.7	12.5	18.2
Not married family head	*	7.4	7.8	*	6.0	6.4	*	13.4	14.2
Child of family head	*	*	3.7	*	*	*	*	*	4.3
Other relative of family head	*	*	*	*	*	*	*	*	*
Not a member of a family	4.5	*	7.6	*	*	*	5.9	4.4	10.2
Not family coded	*	4.2	4.5	*	*	*	*	6.5	7.5
<i>Birthplace and year of arrival—</i>									
Born in Australia	10.9	73.1	84.0	*	29.1	32.1	13.8	102.2	116.0
Born outside Australia	3.7	24.1	27.9	*	10.2	12.9	6.5	34.3	40.8
Arrived before 1971	*	14.5	16.6	*	6.2	8.2	4.1	20.7	24.8
Arrived 1971-1985	*	9.7	11.3	*	3.9	4.7	*	13.6	16.0
Born in Main English speaking countries(a)	*	14.4	16.3	*	5.7	7.5	3.6	20.1	23.8
Born in other countries	*	9.7	11.6	*	4.5	5.5	*	14.2	17.0
<b>Total</b>	<b>14.6</b>	<b>97.3</b>	<b>111.8</b>	<b>5.7</b>	<b>39.3</b>	<b>45.0</b>	<b>20.3</b>	<b>136.5</b>	<b>156.8</b>

(a) Comprises UK, Ireland, Canada, South Africa, USA and New Zealand.

Source: *Persons Who Had Re-entered the Labour Force, Australia, May 1985* (6264.0).

**TABLE 2.21. PERSONS WHO HAD RE-ENTERED THE LABOUR FORCE: DETAILS OF PREVIOUS JOB AND WHETHER WORKING OR LOOKING FOR WORK, MAY 1985**  
(000)

	Working			Looking for Work			Total		
	Males	Females	Persons	Males	Females	Persons	Males	Females	Persons
Occupation in previous job—									
Previous job less than 20 years ago—									
Professional, technical, etc.	*	22.1	24.3	*	5.4	6.2	*	27.6	30.5
Clerical	*	35.7	39.0	*	14.8	15.3	3.8	50.5	54.3
Sales	*	11.5	12.7	*	4.4	4.9	*	15.9	17.6
Trades and production-process workers and labourers, n.e.c., and miners and quarryworkers	4.6	8.5	13.2	*	5.2	7.8	7.3	13.7	21.0
Service, sport and recreation	*	10.8	11.5	*	5.8	6.1	*	16.6	17.6
Other(a)	*	4.3	6.9	*	*	*	3.7	6.4	10.0
Total	14.6	92.8	107.4	5.7	37.8	43.5	20.3	130.6	150.9
Previous job 20 or more years ago	*	4.4	4.4	*	*	*	*	5.9	5.9
Full-time or part-time status in previous job—									
Previous job less than 20 years ago—									
Full-time	13.8	74.3	88.1	5.7	33.0	38.8	19.5	107.4	126.9
Part-time	*	16.5	17.2	*	4.5	4.5	*	21.0	21.7
Total(b)	14.6	92.8	107.4	5.7	37.8	43.5	20.3	130.6	150.9
Previous job 20 or more years ago	*	4.4	4.4	*	*	*	*	5.9	5.9
Time in previous job (years)—									
1- 2	4.5	28.0	32.5	*	10.9	12.9	6.4	38.9	45.3
3- 4	4.5	19.8	22.3	*	8.3	8.6	6.2	28.0	31.0
5- 9		33.2	35.2	*	15.1	16.4		48.3	51.6
10-19	5.7	15.6	18.9	*	4.8	5.5	3.9	20.5	24.4
20 or more		*	*	*	*	*	3.8	*	4.6
Reason left previous job—									
Retrenched/made redundant/lost job	*	4.8	7.2	*	*	4.6	3.6	8.1	11.8
Returned to studies	5.0	3.6	8.6	*	*	*	5.3	4.5	9.8
Retired/did not want to work any longer	*	3.8	5.1	*	*	*	*	4.6	6.2
Unsatisfactory work arrangements	*	*	*	*	*	*	*	4.2	4.7
Own ill health or injury	*	4.5	7.7	*	*	4.0	5.5	6.1	11.6
To get married	*	7.3	7.3	*	3.9	3.9	*	11.2	11.2
Pregnancy/to have children	*	51.7	51.7	*	19.1	19.1	*	70.8	70.8
To look after family, house or someone else	*	4.5	4.7	*	*	*	*	7.4	7.6
Moved house/spouse transferred	*	7.0	7.3	*	*	3.6	*	10.4	10.9
Travel	*	4.5	5.5	*	*	*	*	5.6	7.0
Other	*	*	4.1	*	*	*	*	3.7	5.3
Educational attainment when left previous job—									
With post-school qualifications	5.4	38.1	43.5	*	11.8	13.9	7.6	49.8	57.4
Degree	*	8.4	10.0	*	*	*	*	10.4	12.7
Trade, technical or other certificate	3.5	28.0	31.5	*	9.5	10.9	4.9	37.5	42.4
Without post-school qualifications(c)	9.2	59.2	68.4	3.6	27.5	31.1	12.8	86.7	99.4
Attended highest level of secondary school available	4.7	12.0	16.7	*	4.2	4.7	5.1	16.2	21.3
Did not attend highest level of secondary school available	4.5	47.2	51.7	*	23.3	26.4	7.6	70.5	78.1
Left at age—									
16 or over	*	19.7	21.1	*	9.0	10.0	*	28.6	31.1
15 or under	*	27.5	30.6	*	14.3	16.4	5.2	41.8	47.0
Never attended school	*	*	*	*	*	*	*	*	*
Still at school	*	*	*	*	*	*	*	*	*
Time since previous job (years)—									
1- 2	8.7	28.9	37.6	3.7	9.2	12.9	12.4	38.1	50.5
3- 4	3.9	21.5	25.4	*	5.5	6.4	4.9	26.9	31.8
5- 9	*	25.1	26.7	*	14.6	15.4	*	39.7	42.1
10-19	*	17.3	17.7	*	8.6	8.8	*	25.9	26.5
20 or more	*	4.4	4.4	*	*	*	*	5.9	5.9
<b>Total</b>	<b>14.6</b>	<b>97.3</b>	<b>111.8</b>	<b>5.7</b>	<b>39.3</b>	<b>45.0</b>	<b>20.3</b>	<b>136.5</b>	<b>156.8</b>

(a) Comprises administrative, executive and managerial; farmers, fisherpersons and timbergetters; and transport and communication. (b) Includes varied/did not know.  
(c) Includes other.

Source: Persons Who Had Re-entered the Labour Force, Australia, May 1985 (6264.0).

**TABLE 2.22. PERSONS WHO HAVE LEFT THE LABOUR FORCE WITHIN THE LAST TWELVE MONTHS: DURATION OF CONTINUOUS PERIOD IN THE LABOUR FORCE BEFORE LEAVING, WHETHER INTENDED TO RETURN TO THE LABOUR FORCE AND AGE, NOVEMBER 1985**  
( ' 000)

	Age group				
	15-24	25-44	45-59	60 and over	Total
MALES					
Continuous period of at least twelve months in the labour force before leaving	11.7	18.1	17.1	31.1	78.0
Intended to return to the labour force	10.6	12.4	5.9	*	31.1
Did not intend to return to the labour force	*	*	6.9	25.3	34.7
Undecided about whether would return to the labour force	4.4		4.3	*	12.2
Continuous period of less than twelve months in the labour force before leaving	35.9	12.8	4.8	6.3	59.9
Intended to return to the labour force	32.2	9.2	*	*	45.3
Did not intend to return to the labour force	*	*	*	4.1	8.7
Undecided about whether would return to the labour force	*	*	*	*	5.8
Total	47.6	31.0	21.9	37.4	137.9
Intended to return to the labour force	42.8	21.6	8.6	*	76.4
Did not intend to return to the labour force	6.0		8.0	29.4	43.5
Undecided about whether would return to the labour force	*	5.8	5.3	4.4	18.0
FEMALES					
Continuous period of at least twelve months in the labour force before leaving	30.5	82.3	27.7	12.6	153.0
Intended to return to the labour force	17.1	43.9	6.1	*	67.8
Did not intend to return to the labour force	8.1	20.8	17.6	11.0	57.5
Undecided about whether would return to the labour force	5.3	17.5	4.0	*	27.8
Continuous period of less than twelve months in the labour force before leaving	53.4	95.0	18.5	*	170.3
Intended to return to the labour force	41.0	48.3	9.0	*	99.1
Did not intend to return to the labour force	8.2	24.7	7.2	*	41.8
Undecided about whether would return to the labour force	4.3	21.9	*	*	29.5
Total	83.9	177.3	46.2	16.0	323.4
Intended to return to the labour force	58.0	92.3	15.1	*	166.8
Did not intend to return to the labour force	16.3	45.5	24.8	12.7	99.2
Undecided about whether would return to the labour force	9.6	39.5	6.3	*	57.3
PERSONS					
Continuous period of at least twelve months in the labour force before leaving	42.2	100.4	44.8	43.7	231.1
Intended to return to the labour force	27.6	56.3	12.0	*	98.9
Did not intend to return to the labour force	8.6	22.8	24.5	36.3	92.2
Undecided about whether would return to the labour force	5.9	21.3	8.3	4.4	40.0
Continuous period of less than twelve months in the labour force before leaving	89.4	107.8	23.3	9.7	230.2
Intended to return to the labour force	73.2	57.6	11.7	*	144.4
Did not intend to return to the labour force	10.0	26.3	8.3	5.8	50.5
Undecided about whether would return to the labour force	6.1	23.9	5.2		35.3
Total	131.5	208.2	68.2	53.4	461.3
Intended to return to the labour force	100.8	113.9	23.7	4.9	243.3
Did not intend to return to the labour force	18.6	49.1	32.9	42.1	142.7
Undecided about whether would return to the labour force	12.1	45.3	11.6	6.4	75.3

Source: Persons Who have Left the Labour Force, Australia, November 1985 (6267.0).

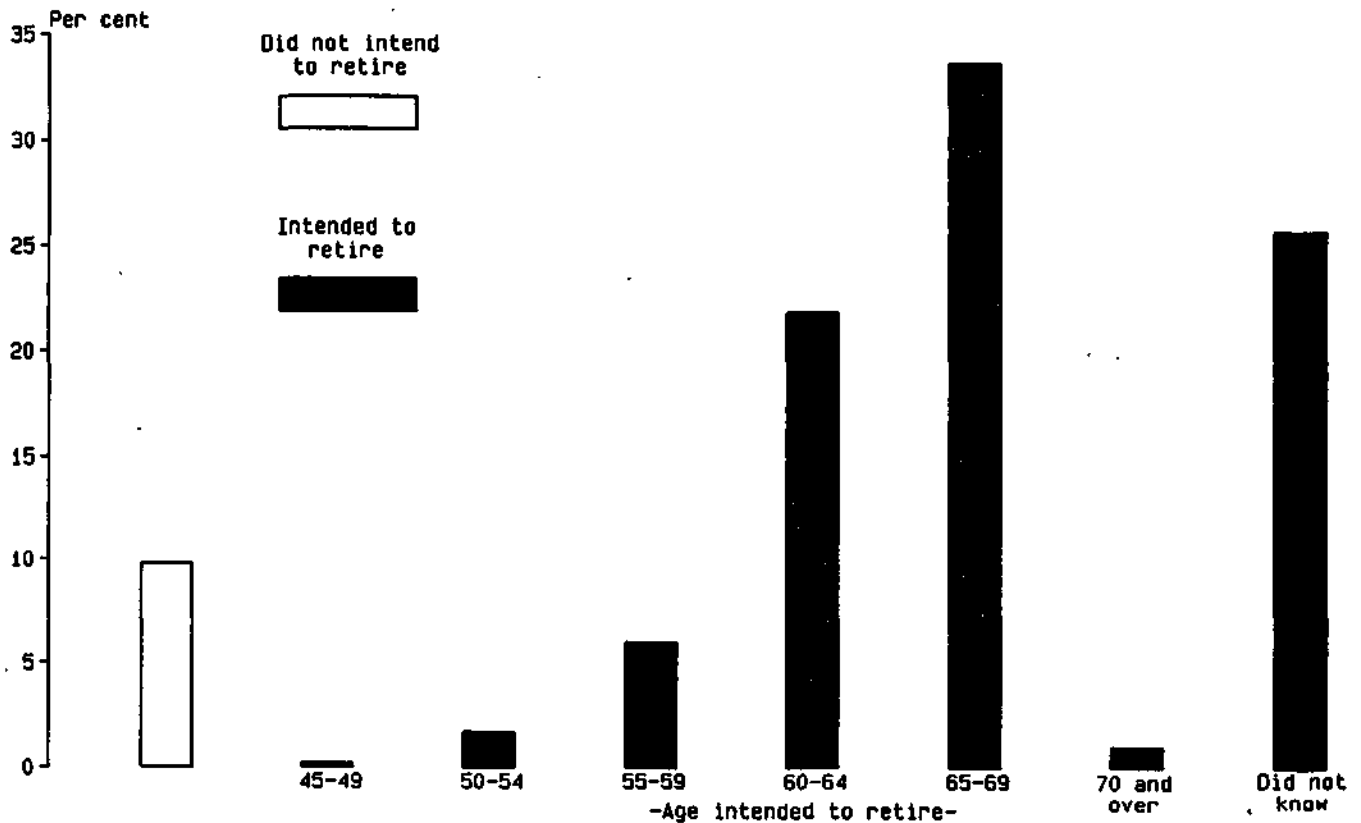
**TABLE 2.23. PERSONS WHO HAVE LEFT THE LABOUR FORCE WITHIN THE LAST TWELVE MONTHS: WHETHER INTENDED TO RETURN TO THE LABOUR FORCE AND SUMMARY OF CHARACTERISTICS, NOVEMBER 1985**  
(<sup>'000</sup>)

	<i>Whether intended to return to the labour force</i>								
	<i>Intended to return</i>			<i>Did not intend to return</i>			<i>Undecided</i>		
	<i>Males</i>	<i>Females</i>	<i>Persons</i>	<i>Males</i>	<i>Females</i>	<i>Persons</i>	<i>Males</i>	<i>Females</i>	<i>Persons</i>
<b>Age group (years)—</b>									
15-19	22.3	27.1	49.5	} 4.3 {	5.1	6.5	} 5.8 {	*	3.7
20-24	20.4	30.9	51.3		11.2	12.1		7.0	8.3
25-34	14.4	65.2	79.6		30.0	32.0		24.6	27.9
35-44	7.2	27.0	34.2	} 5.0 {	15.7	17.7	} 5.2 {	14.7	16.8
45-54	7.0	12.2	19.2		13.9	16.9		4.7	7.8
55-59	} 4.7 {	4.1 {	4.5		10.9	16.6	} 3.6 {	*	6.5
60-64			4.3	17.1	9.6	26.7		*	*
65 and over			*	12.9	*	16.0		*	*
<b>Marital status—</b>									
Married	22.5	105.0	127.5	33.9	81.9	115.9	8.1	46.1	54.3
Not married	53.9	61.8	115.7	11.2	17.5	28.7	8.2	11.0	19.2
<b>Family status—</b>									
Member of a family	58.9	141.2	200.1	35.9	88.9	124.9	11.7	50.8	62.6
Husband or wife	20.0	97.6	117.6	32.4	77.8	110.2	7.8	43.4	51.2
With children aged									
0-14 present	9.7	74.0	83.7	*	43.2	46.5	3.5	31.0	34.4
Without children aged									
0-14 present	10.3	23.5	33.8	29.1	34.6	63.7	4.3	12.4	16.7
Not married family head	*	17.2	19.3	*	6.3	7.2	*	5.8	6.5
With children aged									
0-14 present	*	14.4	15.7	*	4.2	4.4	*	4.6	5.0
Without children aged									
0-14 present	*	*	3.6	*	*	*	*	*	*
Child of family head	35.0	25.2	60.2	*	4.1	6.1	*	*	4.1
Other relative of family head	*	*	*	*	*	*	*	*	*
Not a member of a family	11.3	11.1	22.4	6.8	5.7	12.5	4.1	*	7.0
Living alone	4.1	*	6.8	4.8	3.8	8.6	*	*	4.8
Not living alone	7.1	8.4	15.6	*	*	3.9	*	*	*
Not family coded	6.3	14.5	20.8	*	4.8	7.1	*	*	3.9
<b>Main source of income—</b>									
Investments/Savings etc.	15.9	9.8	25.6	8.2	6.3	14.5	*	*	5.0
Superannuation	*	*	*	8.6	*	10.7	*	*	*
TEAS(b)	9.6	6.2	15.8	*	*	*	*	*	*
Unemployment benefit/									
Sickness benefit	13.0	8.7	21.7	3.5	3.8	7.3	3.6	*	4.9
Invalid/Age/Supporting									
Parents/Widows pension	*	16.5	18.8	12.5	14.2	26.7	*	7.2	9.9
War disability/Repatriation/									
Service/War Widows pension	*	*	*	5.1	*	7.1	*	*	*
Someone else's income	28.0	120.0	148.0	*	68.1	70.4	*	41.3	43.6
Other	5.9	4.6	10.6	*	*	5.4	3.7	*	7.1
<b>Total</b>	<b>76.4</b>	<b>166.8</b>	<b>243.3</b>	<b>45.1</b>	<b>99.5</b>	<b>(a)144.5</b>	<b>16.4</b>	<b>57.1</b>	<b>73.5</b>

(a) Includes 1,800 people permanently unable to work who were not asked about their 'main source of income'. (b) Tertiary Education Assistance Scheme.

Source: *Persons Who have Left the Labour Force, Australia, November 1985* (6267.0).

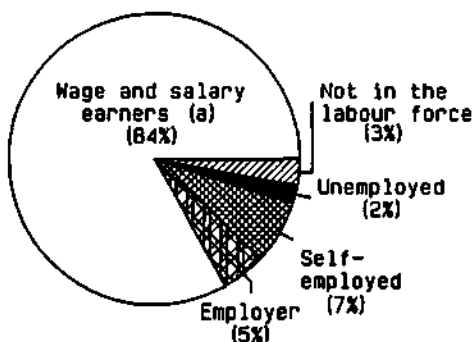
**CHART 2.h. PERSONS AGED 45 AND OVER : WHETHER INTENDED TO RETIRE FROM FULL-TIME WORK AND AGE INTENDED TO RETIRE, SEPTEMBER 1984**



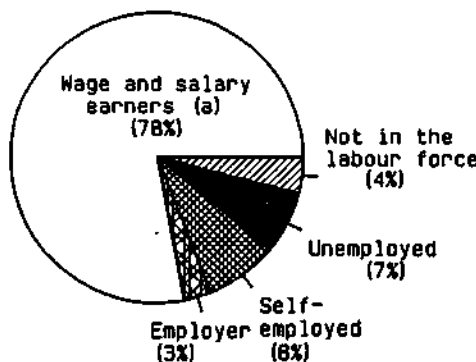
Source: Persons Who Intended to Retire from Full-time Work, Australia, September 1984 (6258.0).

**CHART 2.i. PERSONS AGED 45 AND OVER WHO INTENDED TO RETIRE FROM FULL-TIME WORK: WHETHER INTENDED TO RETIRE EARLY, LABOUR FORCE STATUS AND STATUS OF WORKER, SEPTEMBER 1984**

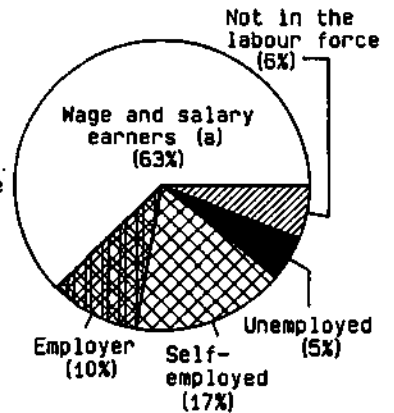
Intended to retire early



Did not intend to retire early



Did not know



(a) Includes small number of unpaid family helpers.

Source: Persons Who Intended to Retire from Full-time Work, Australia, September 1984 (6258.0).



**TABLE 2.24. PERSONS AGED 45 AND OVER WHO INTENDED TO RETIRE FROM FULL-TIME WORK : SUMMARY OF CHARACTERISTICS AND AGE INTENDED TO RETIRE, SEPTEMBER 1984**  
( ' 000)

	Age intended to retire (years)						
	Males			Females			
	45-64	65 and over	Total(a)	45-59	60 and over	Total(a)	Persons(a)
<b>Total</b>	<b>273.7</b>	<b>514.3</b>	<b>1,059.4</b>	<b>66.3</b>	<b>141.8</b>	<b>333.9</b>	<b>1,393.2</b>
Expected main source of income at retirement—							
Superannuation	130.0	102.9	272.7	7.0	25.5	40.9	313.6
Life assurance and other schemes	4.5	6.7	15.9	*	*	*	17.9
Government pensions and benefits(b)	56.8	334.8	508.9	14.4	83.3	158.4	667.2
Investments	48.1	31.3	115.5	7.3	10.7	26.4	141.9
Savings/sale of assets	10.8	9.0	33.2	*	*	8.7	41.9
Part-time work	11.1	4.8	19.0	*	*	*	21.9
Dependent upon another person	*	*	4.1	32.3	11.0	64.6	68.7
Other(c)	11.2	23.4	90.0	*	6.9	30.1	120.1
Expected type of payment from retirement scheme—							
Belonged to a scheme	229.8	329.3	702.6	27.5	66.1	131.7	834.4
Lump sum only	109.6	191.0	367.4	19.0	32.1	71.2	438.6
Regular payments only	27.1	26.9	62.7	*	6.6	11.6	74.3
Lump sum and regular payments	44.8	22.8	76.0	3.4	7.7	12.9	88.9
No lump sum or regular payments	*	3.4	7.2	*	*	*	8.1
Did not know type of payments	46.7	85.3	189.3	*	19.2	35.1	224.4
Did not belong to a scheme	43.9	184.9	356.8	38.8	75.7	202.1	558.9
Expected time until retirement—							
4 years or less	86.9	59.8	146.7	36.5	33.4	69.9	216.7
5 to 9 years	97.1	125.6	222.7	24.7	39.7	64.4	287.1
10 to 14 years	73.2	146.5	219.8	5.1	51.3	56.4	276.2
15 to 19 years	16.4	146.3	162.7	*	15.6	15.6	178.3
20 years or more	..	36.1	36.1	..	*	*	37.8
Did not know	..	..	271.4	..	..	125.8	397.2
Current housing arrangements—							
Owns own home	137.0	245.4	525.2	32.9	64.4	160.1	685.3
Paying off home	100.4	162.2	336.6	25.6	42.9	102.4	438.9
Renting from Housing Commission	6.4	21.7	36.0	*	6.1	11.4	47.4
Renting from other	24.7	66.2	127.5	5.0	19.1	42.6	170.1
Rent free	4.1	15.1	27.1	*	6.2	11.1	38.1
Other	*	3.6	7.0	*	3.1	6.3	13.3
Expected housing arrangements at retirement—							
Own own home	220.7	382.0	796.0	48.2	96.2	225.4	1,021.5
Paying off home	26.0	38.7	80.1	10.7	14.1	35.0	115.2
Renting from Housing Commission	5.6	17.8	29.3	*	5.8	10.9	40.2
Renting from other	6.4	32.1	52.2	*	7.6	17.3	69.5
Rent free	*	6.2	10.2	*	4.9	7.4	17.6
Other	*	*	4.9	*	*	*	7.6
Did not know	11.9	34.6	86.6	*	11.6	35.1	121.7

(a) Includes persons who did not know at what age they intended to retire. (b) May include some Government superannuation. (c) Includes persons who did not know what their main source of income would be.

Source: *Persons Who Intended to Retire from Full-time Work, Australia, September 1984* (6258.0).