

CHAPTER 6

AWARD RATES, EARNINGS AND INCOME

The concept of a total return for labour includes wages, salaries, payment in kind and fringe benefits. Emphasis is given to wages and salaries, defined as the monetary remuneration paid to employees for time worked or work done together with payment for such things as holidays and sick leave. Wages and salaries statistics produced by the ABS are usually referred to as earnings.

In this chapter indexes of award rates of pay and statistics on the level and distribution of earnings and the contribution of earnings to total income are presented. Statistics on non-wage benefits are given in Chapter 7.

Award rates of pay indexes are based on minimum rates of pay fixed by law, agreement or arbitration. Unlike the statistics of earnings which show the relative *levels* and *trends* over time for industries, full-time and part-time males and females, the indexes of minimum weekly and hourly rates of pay are designed to measure only the relative *trends* in award rates for full-time adult males and females.

Indexes of minimum weekly and hourly award rates of pay cover all full-time adult wage and salary earners whose minimum rates of pay are normally varied in accordance with awards, determinations and collective agreements. The indexes are based on weights derived from the May 1976 Survey of Employee Earnings and Hours and therefore do not reflect any subsequent effects of compositional changes in the labour force or in industry structure.

Average weekly earnings statistics are produced from surveys of employers conducted quarterly and annually. The quarterly average weekly earnings series is based on a survey of employers introduced in September 1981 to replace that previously derived from information available from employers' payroll tax records. The series provides information on average weekly earnings for males and females and ordinary time earnings for full-time adults.

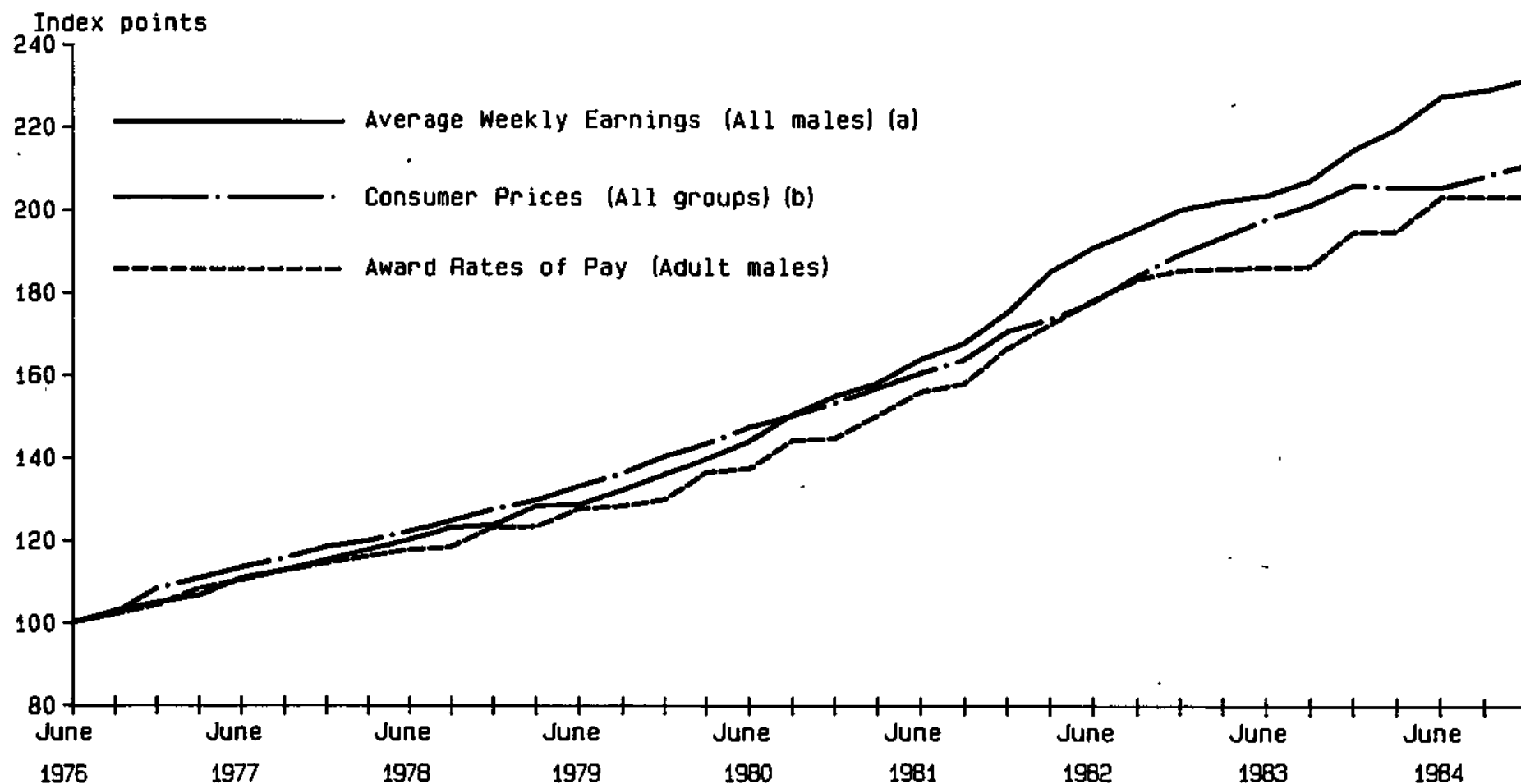
In the December quarter of each year, more detailed dissections of earnings are obtained in this survey for managerial, non-managerial, full-time and part-time and adult and junior employees. This information is a continuation of that previously obtained from an annual survey of employers conducted in October.

In addition to the average weekly earnings statistics obtained from the new quarterly survey of employers, statistics on the distribution and composition of earnings were collected from a survey of employers conducted annually in May from 1974 to 1981. In 1983, this survey changed from an annual to a biennial one.

Statistics which show (at each level of weekly earnings) the number of employees by age, occupation and full-time and part-time status are obtained from a survey conducted in August each year. This survey is a supplement to the ABS monthly labour force survey.

More detailed statistics on earned incomes and their relationship to total income are collected in full-scale Income Surveys. The most recent survey was conducted in 1982 and collected not only financial year incomes (in respect of the financial year 1981-82) but also current incomes. Information on the principal source of income of persons is shown.

**CHART 6.a. AWARD RATES OF PAY, AVERAGE WEEKLY EARNINGS AND
CONSUMER PRICE INDEXES, JUNE QUARTER 1976 TO DECEMBER QUARTER 1984**
(Base 1976=100.0)



(a) Converted from reference base September quarter 1981=100.0. (b) Converted from the All Groups Consumer Price Index, weighted average of six State Capital Cities, reference base 1980-1981=100.0.

Source: Average Weekly Earnings, States and Australia (5302.0); Award Rates of Pay Indexes, Australia (6312.0); Consumer Price Index, Australia (6401.0).

**TABLE 6.1. WAGE AND SALARY EARNERS : INDEXES OF WEEKLY AND HOURLY AWARD
RATES OF PAY, ADULT MALES AND ADULT FEMALES, JUNE 1976 TO DECEMBER 1984**
(Base: Weighted Average Minimum Award Rate, June 1976 = 100.0)
(Index numbers)

End of—	Weekly award rates(a)		Hourly award rates(b)	
	Males	Females	Males	Females
1976—				
June	100.0	100.0	100.0	100.0
September	102.0	102.0	102.0	102.1
December	104.3	104.3	104.3	104.5
1977—				
March	108.4	108.7	108.8	109.2
June	110.4	110.7	110.9	111.3
September	112.7	112.9	113.2	113.5
December	114.5	114.7	115.0	115.2
1978—				
March	116.2	116.4	116.8	117.0
June	117.8	118.0	118.4	118.6
September	118.4	118.2	119.3	119.0
December	123.3	123.2	124.3	123.8
1979—				
March	123.4	123.3	124.5	123.9
June	127.7	127.1	128.9	127.9
September	128.3	127.3	129.4	128.1
December	129.9	128.4	131.1	129.2
1980—				
March	136.6	134.5	137.9	135.4
June	137.4	135.5	138.6	136.3
September	144.2	143.5	145.4	144.4
December	144.8	144.6	145.8	145.5
1981—				
March	150.3	150.4	151.5	151.4
June	156.0	155.8	157.3	157.0
September	158.0	157.3	159.5	158.4
December	166.6	164.3	168.2	166.2
1982—				
March	172.3	172.1	175.5	174.2
June	178.2	175.4	183.4	177.9
September	183.2	181.0	189.0	183.9
December	185.4	183.7	191.2	186.3
1983—				
March	185.8	184.0	191.7	186.8
June	186.1	184.6	192.0	187.4
September	186.2	184.8	192.2	187.7
December	194.6	193.0	201.0	196.3
1984—				
March	194.8	193.5	201.5	197.8
June	203.1	201.5	210.1	206.3
September	203.1	201.6	210.5	206.8
December	203.2	201.7	210.6	207.0

(a) Base: June 1976, males = \$153.32; females = \$139.50. (b) Base: June 1976, males = \$3.36; females = \$3.16. The indexes of hourly rates cover wage earners only.

Source: Award Rates of Pay Indexes, Australia (6312.0).

**TABLE 6.2. WAGE AND SALARY EARNERS : INDEXES OF WEEKLY AWARD RATES OF PAY,
ADULT MALES AND ADULT FEMALES, INDUSTRIES, DECEMBER 1979 TO DECEMBER 1984**

(Base: Weighted Average Minimum Award Rate, June 1976 = 100.0)

(Index numbers)

Industry	December					
	1979	1980	1981	1982	1983	1984
ADULT MALES						
Manufacturing—						
Food, beverages and tobacco	128.9	143.7	164.5	183.3	192.3	201.3
Textiles; clothing and footwear	128.1	143.9	165.0	186.5	195.1	203.6
Paper, printing, etc.	129.2	146.5	162.5	183.1	191.3	199.4
Chemical, petroleum and coal products	129.6	144.5	165.4	184.1	192.9	200.8
Metal products, machinery and equipment—						
Basic metal products	132.9	146.2	168.2	182.6	191.3	199.1
Fabricated metal products; other machinery, etc.	137.2	150.9	181.3	196.3	205.9	214.2
Transport equipment	132.3	145.2	174.6	189.3	197.8	206.7
Total metal products, etc.	134.7	148.1	176.5	191.3	200.3	208.7
Other	130.2	146.4	163.6	186.4	196.3	204.6
Non-manufacturing—						
Mining	130.6	143.9	167.9	180.4	188.5	197.4
Electricity, gas and water	127.8	142.5	163.5	182.0	191.6	199.4
Construction	130.3	145.7	168.4	188.3	198.5	206.6
Wholesale trade	130.5	145.5	166.6	185.4	195.7	204.9
Retail trade	128.7	145.7	161.2	185.0	194.5	203.3
Transport and storage	130.2	144.0	167.2	184.2	193.4	202.8
Communication	130.4	143.0	165.1	189.7	197.9	206.0
Finance, business services	129.3	143.2	168.6	183.2	192.3	200.7
Public administration and defence	125.5	141.6	162.9	179.8	188.8	197.1
Community services	127.8	143.8	161.2	182.5	192.5	201.5
Recreation, personal and other services	127.5	143.6	162.3	181.6	191.3	199.5
Total all industries	129.9	144.8	166.7	185.4	194.7	203.2
ADULT FEMALES						
Manufacturing—						
Food, beverages and tobacco	128.0	143.7	163.8	184.0	192.8	201.9
Textiles; clothing and footwear	127.6	144.6	161.8	186.4	194.8	202.9
Paper, printing, etc.	127.2	144.6	158.3	183.9	192.1	200.3
Chemical, petroleum and coal products	126.6	142.8	162.0	177.6	187.6	195.3
Metal products, machinery and equipment—						
Basic metal products	127.9	143.5	164.7	178.6	186.9	194.5
Fabricated metal products; other machinery, etc.	134.5	148.8	177.6	193.3	202.4	210.9
Transport equipment	132.0	146.4	176.8	190.4	198.7	206.9
Total metal products, etc.	133.3	147.7	175.8	190.9	199.8	208.1
Other	129.0	146.8	162.3	183.2	193.1	201.7
Non-manufacturing—						
Electricity, gas and water	129.3	145.5	165.0	177.3	184.9	193.1
Construction	130.4	145.8	163.3	178.5	193.2	201.1
Wholesale trade	129.2	145.7	165.2	183.8	195.0	203.1
Retail trade	126.9	144.4	161.2	181.2	190.6	200.6
Transport and storage	128.5	143.6	166.3	180.8	190.4	199.5
Communication	128.1	141.1	168.2	178.7	188.2	196.0
Finance, business services	128.0	143.5	165.5	181.7	191.7	199.5
Public administration and defence	127.1	143.1	164.7	179.9	188.6	197.5
Community services	128.0	144.4	162.3	185.6	194.6	203.6
Recreation, personal and other services	127.6	145.6	162.3	178.0	187.9	196.7
Total all industries	128.4	144.6	164.3	183.7	193.0	201.7

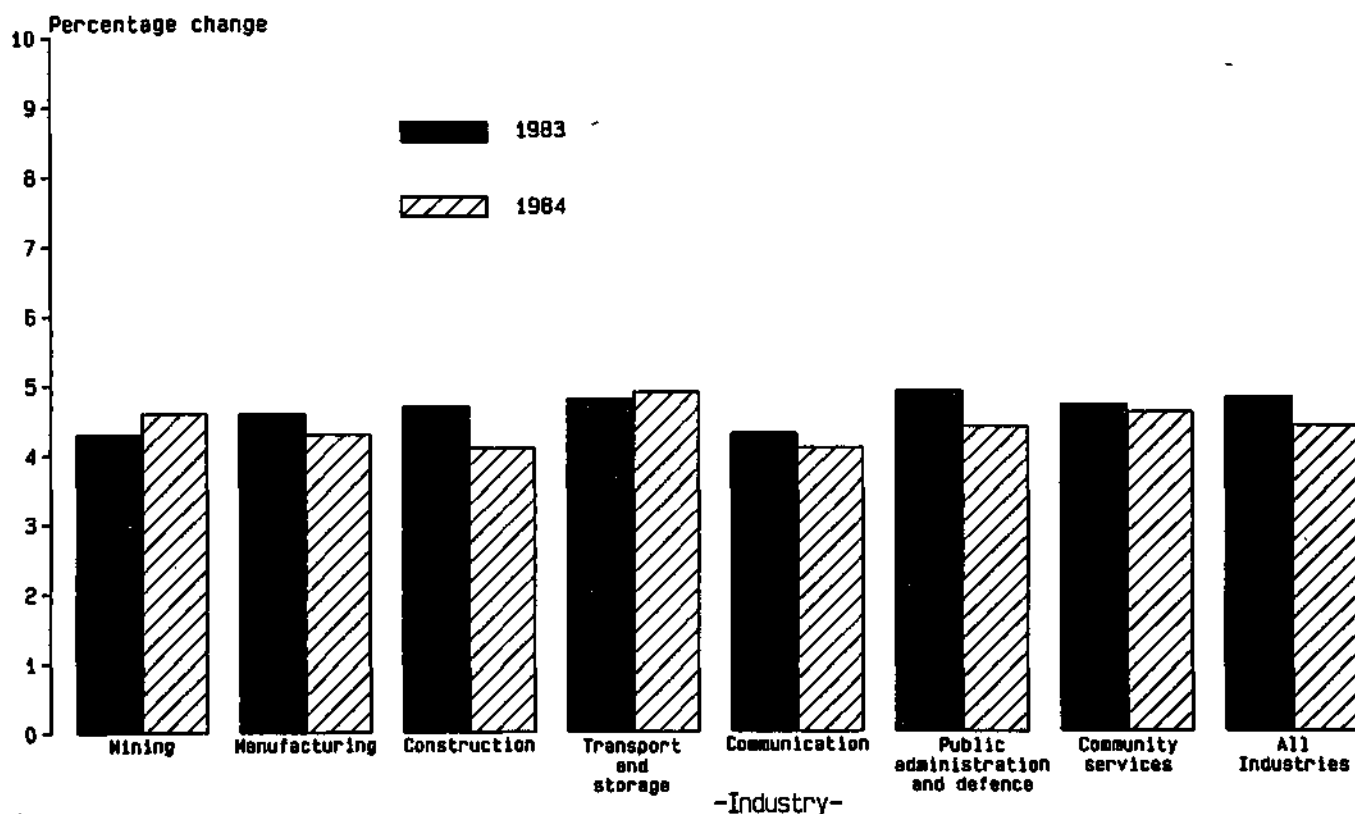
Source: Award Rates of Pay Indexes, Australia (6312.0).

**TABLE 6.3. WAGE AND SALARY EARNERS : INDEXES OF WEEKLY AWARD RATES OF PAY,
ADULT MALES AND ADULT FEMALES, STATES, DECEMBER 1976 TO DECEMBER 1984**
(Base: Weighted Minimum Award Rate, June 1976 = 100.0)
(Index numbers)

State	December								
	1976	1977	1978	1979	1980	1981	1982	1983	1984
ADULT MALES									
New South Wales	104.2	114.3	123.3	130.2	144.5	167.6	184.1	193.3	201.4
Victoria	104.2	114.3	123.3	130.1	145.1	166.4	186.8	196.2	204.5
Queensland	104.2	114.5	122.8	127.9	144.1	166.2	187.6	196.0	205.6
South Australia	104.3	115.1	124.2	131.1	146.2	167.1	186.4	195.8	204.8
Western Australia	104.5	114.9	123.8	130.6	144.7	164.9	184.2	193.8	202.7
Tasmania	104.4	114.6	123.7	130.1	145.6	164.9	180.8	193.1	201.5
Australia	104.3	114.5	123.3	129.9	144.8	166.7	185.4	194.7	203.2
ADULT FEMALES									
New South Wales	104.2	114.6	122.9	128.9	145.4	166.5	183.7	192.3	200.7
Victoria	104.1	114.3	122.9	127.7	143.2	162.1	184.5	194.5	202.7
Queensland	104.5	114.6	124.0	127.0	144.4	163.4	183.8	191.9	199.8
South Australia	104.4	114.8	123.1	128.0	144.7	160.5	181.8	191.6	202.9
Western Australia	105.4	117.1	125.5	132.3	147.3	167.7	185.2	196.7	208.0
Tasmania	104.1	114.5	123.4	127.5	145.3	161.9	177.7	191.8	200.1
Australia	104.3	114.7	123.2	128.4	144.6	164.3	183.7	193.0	201.7

Source: Award Rates of Pay Indexes, Australia (6312.0)

**CHART 6.b. WAGE AND SALARY EARNERS : INDEXES OF WEEKLY AWARD
RATES OF PAY, SELECTED INDUSTRIES AND PERCENTAGE CHANGE,
TWELVE MONTHS ENDED DECEMBER 1983 AND 1984**



Source: Award Rates of Pay Indexes, Australia (6312.0).

TABLE 6.4. ALL MALES : AVERAGE WEEKLY EARNINGS INDEX, STATES AND TERRITORIES, JUNE QUARTER 1976 TO DECEMBER QUARTER 1984
 (Base: June quarter 1976 = 100.0)
 (Index numbers)

Quarter	N.S.W.	Vic.	Qld	S.A.	W.A.	Tas.	N.T.	A.C.T.	Australia
1976—									
June	100.0	100.0	100.0	100.0	100.0	100.0	100.0	100.0	100.0
September	102.0	101.5	105.8	104.0	102.4	105.9	102.8	104.9	102.9
December	104.0	104.5	105.3	105.7	106.1	108.0	106.6	108.0	104.9
1977—									
March	106.3	106.0	106.9	108.5	108.7	110.2	109.7	106.6	106.7
June	111.0	110.9	109.3	112.9	111.7	112.9	111.5	111.9	110.9
September	112.0	111.9	112.9	115.0	114.1	116.4	115.1	114.0	112.8
December	115.3	113.0	116.7	117.0	116.5	118.3	120.0	116.4	115.3
1978—									
March	118.1	117.3	117.9	117.7	118.5	121.3	122.4	118.7	117.8
June	120.0	120.0	120.4	122.6	120.2	122.5	125.8	121.0	120.3
September	122.7	122.7	122.8	123.8	123.1	123.8	127.3	123.7	123.2
December	123.4	123.6	123.7	124.2	123.4	123.9	128.8	125.7	123.8
1979—									
March	129.3	126.9	129.7	128.7	128.3	130.9	131.5	129.9	128.4
June	128.5	128.9	128.5	129.1	127.9	131.6	133.6	129.7	128.7
September	133.5	133.5	131.6	132.5	131.1	137.3	139.2	132.6	133.2
December	136.2	136.6	133.6	135.5	135.4	139.5	142.3	135.4	136.1
1980—									
March	140.8	139.0	138.5	141.1	139.4	145.8	146.3	140.7	139.8
June	146.0	142.1	139.6	144.4	146.0	151.3	154.5	142.5	144.1
September	151.8	149.4	148.3	148.8	149.2	156.8	163.4	147.2	150.5
December	154.2	152.4	157.5	156.5	154.8	160.7	169.9	153.0	155.0
1981—									
March	159.0	156.9	158.5	159.0	159.0	165.3	174.5	154.7	158.2
June	164.6	163.2	162.0	165.3	165.7	168.8	180.9	158.3	163.9
September	166.6	168.0	167.2	165.8	167.0	174.4	182.2	171.0	167.8
December	173.8	176.8	175.7	171.0	173.5	177.8	n.a.	n.a.	175.3
1982—									
March	182.0	187.7	185.6	181.9	186.6	190.6	194.4	183.1	185.1
June	188.3	191.6	191.4	182.4	196.3	201.1	209.6	197.8	190.8
September	190.8	200.7	194.0	189.7	200.9	202.5	n.a.	196.7	195.3
December	194.5	205.7	198.8	195.7	204.3	207.0	213.7	205.0	200.0
1983—									
March	195.9	206.8	200.5	198.8	209.1	214.7	215.5	207.5	202.0
June	198.3	209.5	201.8	198.0	205.2	217.3	218.4	204.3	203.4
September	203.4	213.0	204.3	203.3	209.1	212.2	223.0	203.4	207.1
December	209.4	221.7	211.1	211.8	218.0	223.8	228.1	206.1	214.5
1984—									
March	213.8	227.2	214.2	217.8	225.2	230.9	233.4	212.3	219.6
June	219.9	235.2	225.8	225.3	232.5	239.4	243.0	225.5	227.4
September	223.1	239.2	222.1	225.6	231.8	235.5	241.6	224.1	228.8
December	227.0	238.5	224.7	223.4	233.0	243.0	246.1	232.0	230.7

Source: Average Weekly Earnings, States and Australia (6302.0).

TABLE 6.5. AVERAGE WEEKLY EARNINGS OF EMPLOYEES(a), 1983 TO 1984

Quarter	Males			Females			Persons		
	Full-time adults		All males	Full-time adults		All females	Full-time adults		All employees
	Weekly ordinary time earnings	Weekly total earnings	Weekly total earnings	Weekly ordinary time earnings	Weekly total earnings	Weekly total earnings	Weekly ordinary time earnings	Weekly total earnings	Weekly total earnings
—dollars—									
1983(b)—									
December	368.90	394.10	362.00	297.40	303.90	237.20	346.00	365.10	311.30
1984(b)—									
March	376.20	400.70	370.60	304.10	311.00	246.50	353.10	371.90	321.30
June	388.00	415.70	383.80	316.90	324.20	257.10	365.20	386.30	333.40
September	392.40	419.20	386.20	319.00	326.70	256.20	369.00	389.80	334.30
December	397.80	427.30	389.50	325.50	333.50	255.10	375.30	398.10	335.40
Quarterly change—									
1984—									
— per cent —									
March	2.0	1.7	2.4	2.3	2.3	3.9	2.1	1.9	3.2
June	3.1	3.7	3.6	4.2	4.2	4.3	3.4	3.9	3.8
September	1.1	0.8	0.6	0.7	0.8	-0.4	1.0	0.9	0.3
December	1.4	1.9	0.9	2.0	2.1	-0.4	1.7	2.1	0.3

(a) Refers to all employees engaged in full-time and part-time employment. (b) Care should be taken when comparing these figures with those previously published as they are based on revised estimates

Source: Average Weekly Earnings, States and Australia (6302.0)

TABLE 6.6. ALL EMPLOYEES(a): AVERAGE WEEKLY EARNINGS AND PERCENTAGE CHANGE, STATES AND TERRITORIES, DECEMBER QUARTER 1983 TO DECEMBER QUARTER 1984

State	Amount (\$)				Percentage change from previous quarter				Percentage increase December 1983 to December 1984	
	1983(b)	1984(b)			1984(b)					
	December	March	June	Sept- ember	December	March	June	Sept- ember		December
MALES										
New South Wales	372.00	379.80	390.70	396.40	403.30	2.1	2.9	1.5	1.7	8.4
Victoria	358.80	367.60	380.60	387.10	385.90	2.5	3.5	1.7	-0.3	7.6
Queensland	348.40	353.60	372.70	366.50	370.90	1.5	5.4	-1.7	1.2	6.5
South Australia	342.00	351.90	364.00	364.50	360.90	2.9	3.4	0.1	-1.0	5.5
Western Australia	366.70	378.90	391.20	390.00	392.00	3.3	3.2	-0.3	0.5	6.9
Tasmania	347.00	358.10	371.40	365.30	376.90	3.2	3.7	-1.6	3.2	8.6
Northern Territory	402.00	411.60	428.50	426.00	434.00	2.4	4.1	-0.6	1.9	8.0
Australian Capital Territory	399.10	411.10	436.60	433.90	449.10	3.0	6.2	-0.6	3.5	12.5
Australia	362.00	370.60	383.80	386.20	389.50	2.4	3.6	0.6	0.9	7.6
FEMALES										
New South Wales	242.50	251.30	260.70	261.90	263.00	3.6	3.7	0.5	0.4	8.5
Victoria	243.60	255.40	266.70	270.30	268.60	4.8	4.4	1.3	-0.6	10.3
Queensland	233.80	239.90	251.60	244.30	237.50	2.6	4.9	-2.9	-2.8	1.6
South Australia	213.90	222.20	234.30	233.80	229.50	3.9	5.4	-0.2	-1.8	7.3
Western Australia	213.30	222.00	233.70	224.40	229.40	4.1	5.3	-4.0	2.2	7.5
Tasmania	223.30	233.10	245.20	239.00	232.60	4.4	5.2	-2.5	-2.7	4.2
Northern Territory	285.20	299.30	306.40	316.40	316.60	4.9	2.4	3.3	0.1	11.0
Australian Capital Territory	280.20	296.40	305.10	305.40	297.90	5.8	2.9	0.1	-2.5	6.3
Australia	237.20	246.50	257.10	256.20	255.10	3.9	4.3	-0.4	-0.4	7.5

(a) Refers to all employees engaged in full-time and part-time employment. (b) See footnote (b), Table 6.5.

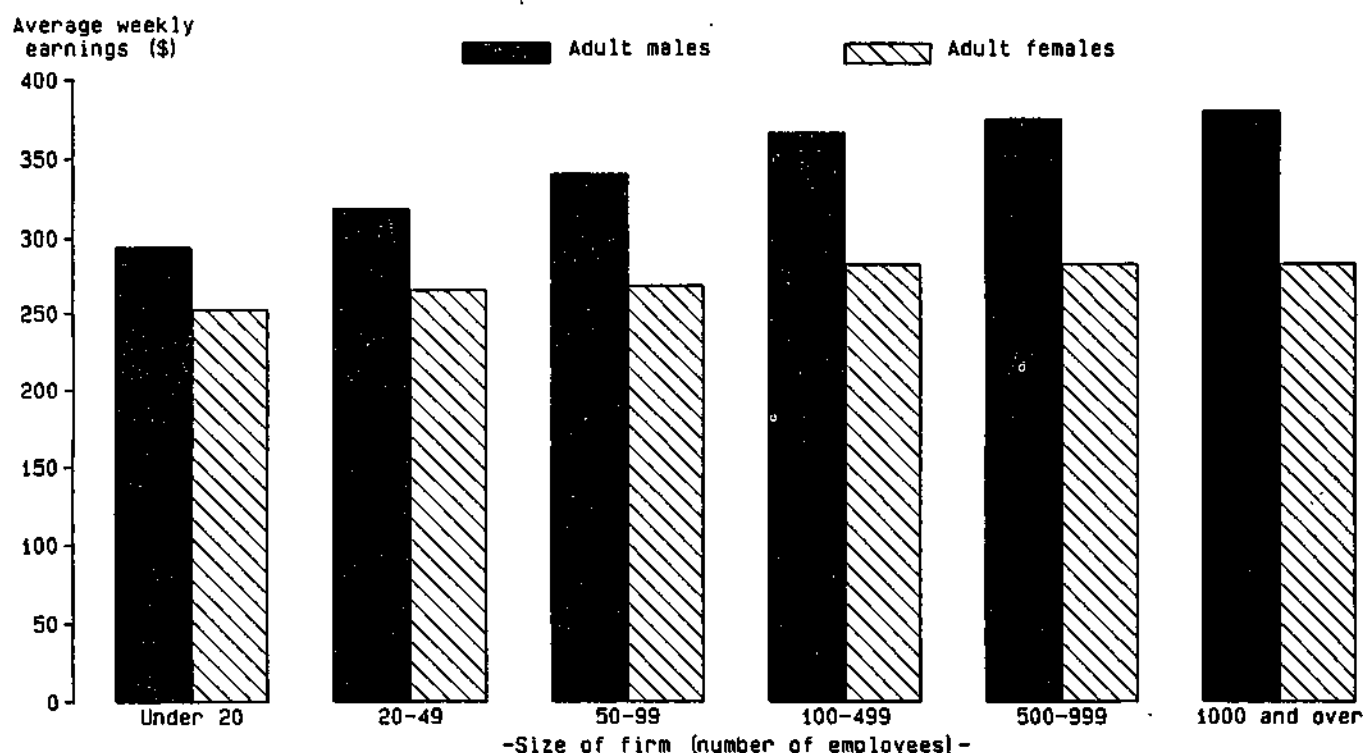
Source: Average Weekly Earnings, States and Australia (6302.0).

TABLE 6.7. AVERAGE WEEKLY EARNINGS : ALL EMPLOYEES, INDUSTRIES AND SECTOR, MAY 1983 (\$)

Industry and sector	Adults			Juniors		
	Males	Females	Persons	Males	Females	Persons
Mining	506.70	346.70	495.40	315.40	277.40	306.00
Manufacturing—						
Food, beverages and tobacco	345.00	239.40	315.00	190.00	164.40	181.90
Textiles; clothing and footwear	328.30	234.20	266.20	151.60	184.90	169.40
Paper, paper products, printing, etc.	355.20	249.80	322.30	184.30	162.90	173.40
Chemical, petroleum and coal products	392.20	282.60	364.10	224.60	209.40	219.40
Metal products, machinery and equipment—						
Basic metal products	396.00	276.30	387.00	209.90	209.70	209.90
Fabricated metal products; other machinery, etc.	340.60	255.20	321.50	179.80	172.00	178.30
Transport equipment	351.90	260.20	341.90	199.30	188.40	198.70
Total metal products, etc.	354.80	257.80	338.80	190.30	180.20	188.80
Other manufacturing	318.50	233.10	299.80	176.30	162.90	174.10
Total manufacturing	348.80	246.40	322.10	184.40	173.60	181.50
Electricity, gas and water	404.30	297.20	396.50	225.90	203.50	220.10
Construction	390.50	222.70	369.50	216.50	163.30	211.00
Wholesale trade	345.30	247.30	317.30	172.40	173.30	172.70
Retail trade	274.00	175.30	224.40	110.00	103.80	106.40
Transport and storage	374.40	284.50	362.50	204.40	197.20	202.60
Communication	366.60	283.70	347.60	222.80	212.90	219.40
Finance, property and business services	372.60	237.50	309.60	185.00	185.10	185.10
Public administration, etc.	379.50	281.10	348.80	174.00	193.80	187.10
Community services	399.30	283.10	328.10	184.50	177.30	178.70
Other industries	238.00	168.80	198.10	128.30	114.70	120.40
Total all industries	360.70	244.20	315.90	160.00	142.50	150.90
Private sector	342.60	216.90	292.70	151.60	130.60	140.80
Government sector	394.30	303.10	361.40	214.30	204.80	209.00

Source: Distribution and Composition of Employee Earnings and Hours, Australia, May 1983 (6306.0).

**CHART 6.c. FULL-TIME NON-MANAGERIAL ADULT EMPLOYEES
IN THE PRIVATE SECTOR : AVERAGE WEEKLY EARNINGS
BY SIZE OF FIRM, MAY 1983**



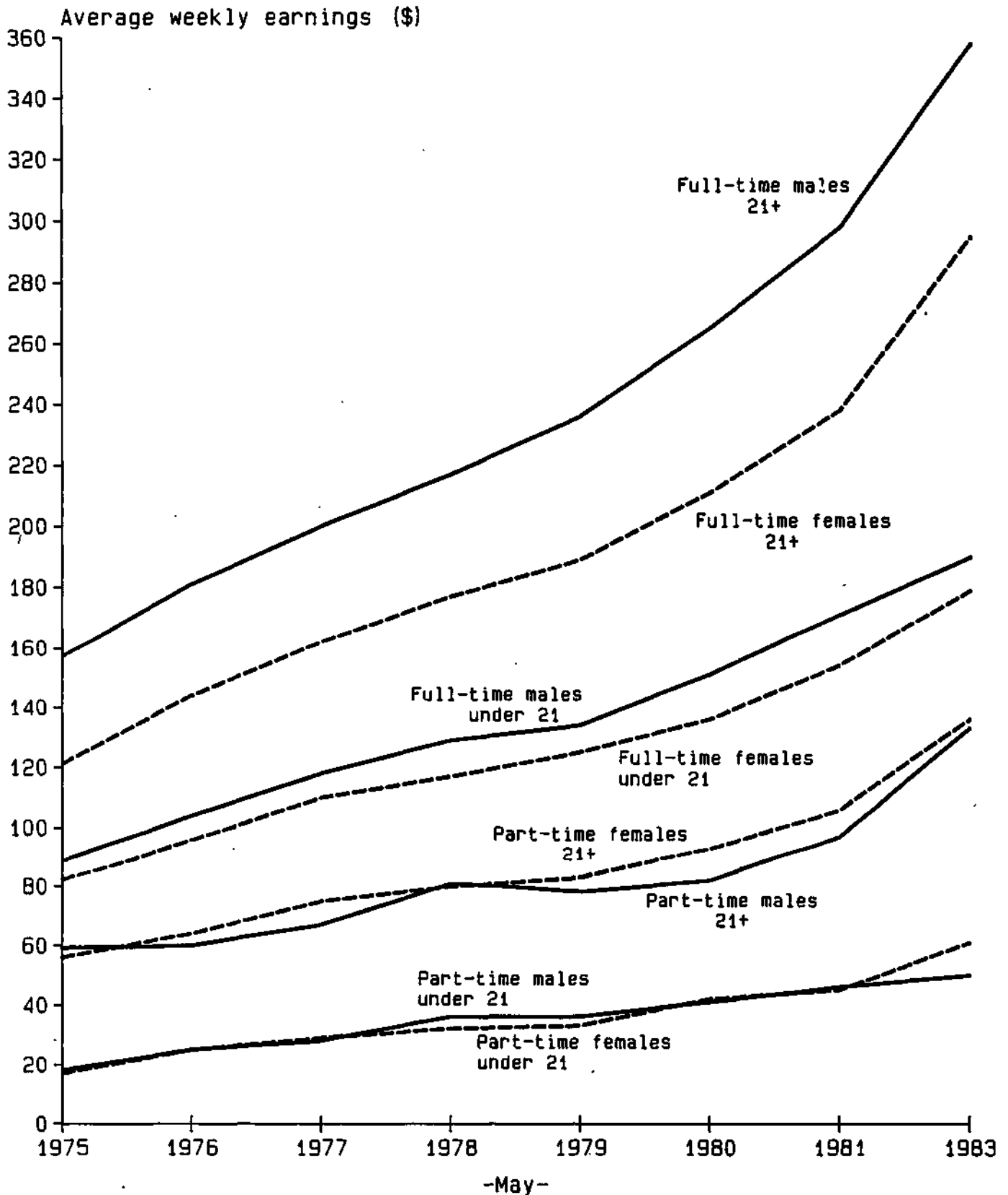
Source: Distribution and Composition of Employee Earnings and Hours, Australia, May 1983 (6306.0).

**TABLE 6.8. COMPOSITION OF AVERAGE WEEKLY EARNINGS AND AVERAGE WEEKLY HOURS PAID FOR:
FULL-TIME NON-MANAGERIAL EMPLOYEES, MAY 1983**

State or Territory	Weekly earnings (\$)					Weekly hours paid for		
	Overtime	Ordinary time			Total	Overtime	Ordinary time	Total
		Award or agreed base rate of pay	Payment by measured result	Over-award and other pay				
ADULT MALES								
New South Wales	26.20	314.90	6.60	11.30	359.10	2.0	38.0	40.0
Victoria	28.00	315.60	2.70	14.20	360.40	2.1	38.2	40.2
Queensland	24.60	309.90	4.60	11.00	350.00	1.8	38.2	40.0
South Australia	24.20	308.50	4.00	9.30	345.90	1.9	38.3	40.2
Western Australia	32.70	318.20	4.70	12.80	368.40	2.5	38.2	40.7
Tasmania	21.90	306.50	9.90	7.20	345.50	1.7	38.7	40.4
Northern Territory	38.40	340.10	3.10	11.70	393.40	2.8	38.6	41.4
Australian Capital Territory	16.60	354.90	*	3.70	377.30	1.2	37.9	39.1
Australia	26.70	314.70	4.80	11.80	358.00	2.0	38.1	40.1
ADULT FEMALES								
New South Wales	5.10	284.60	0.80	6.10	296.60	0.5	37.7	38.2
Victoria	6.00	281.90	1.70	5.20	294.90	0.6	38.0	38.6
Queensland	5.10	278.40	1.60	4.50	289.60	0.5	38.2	38.7
South Australia	5.10	283.60	0.70	4.10	293.50	0.5	38.1	38.6
Western Australia	4.80	277.00	0.40	4.70	286.90	0.5	38.4	38.8
Tasmania	*	282.80	*	*	289.00	*	37.8	38.2
Northern Territory	*	299.90	*	2.20	308.40	0.4	37.8	38.2
Australian Capital Territory	5.20	310.00	..	*	319.30	0.4	37.1	37.6
Australia	5.30	283.00	1.10	5.20	294.60	0.5	38.0	38.4
JUNIOR MALES								
New South Wales	8.20	182.10	2.50	4.90	197.80	1.1	38.6	39.6
Victoria	9.20	174.90	*	5.40	190.10	1.3	38.7	39.9
Queensland	6.80	171.50	*	2.80	182.60	1.0	38.9	39.8
South Australia	*	167.60	*	*	181.90	1.3	38.8	40.1
Western Australia	*	169.50	*	3.60	183.70	1.3	38.4	39.7
Tasmania	*	166.50	..	*	180.40	1.3	38.6	39.9
Northern Territory	*	179.20	..	*	234.30	*	38.7	46.7
Australian Capital Territory	*	153.00	..	*	161.40	*	38.8	39.7
Australia	8.80	175.20	1.40	4.30	189.70	1.2	38.7	39.8
JUNIOR FEMALES								
New South Wales	2.40	173.80	*	2.20	178.70	0.4	38.3	38.7
Victoria	3.80	180.10	*	1.50	186.70	0.5	39.1	39.6
Queensland	2.10	166.60	*	1.60	170.50	0.3	39.0	39.3
South Australia	*	177.50	*	*	181.80	*	38.7	39.2
Western Australia	1.50	171.20	..	*	174.30	0.2	39.0	39.2
Tasmania	*	166.80	*	*	172.40	*	38.7	39.1
Northern Territory	*	159.70	..	*	173.10	*	37.6	39.4
Australian Capital Territory	*	181.60	..	*	195.50	*	38.1	39.7
Australia	2.90	173.70	*	1.70	178.80	0.4	38.7	39.1

Source: Distribution and Composition of Employee Earnings and Hours, Australia, May 1983 (6306.0).

**CHART 6.d. FULL-TIME AND PART-TIME NON-MANAGERIAL EMPLOYEES :
AVERAGE WEEKLY EARNINGS BY AGE, MAY 1975 TO MAY 1983**



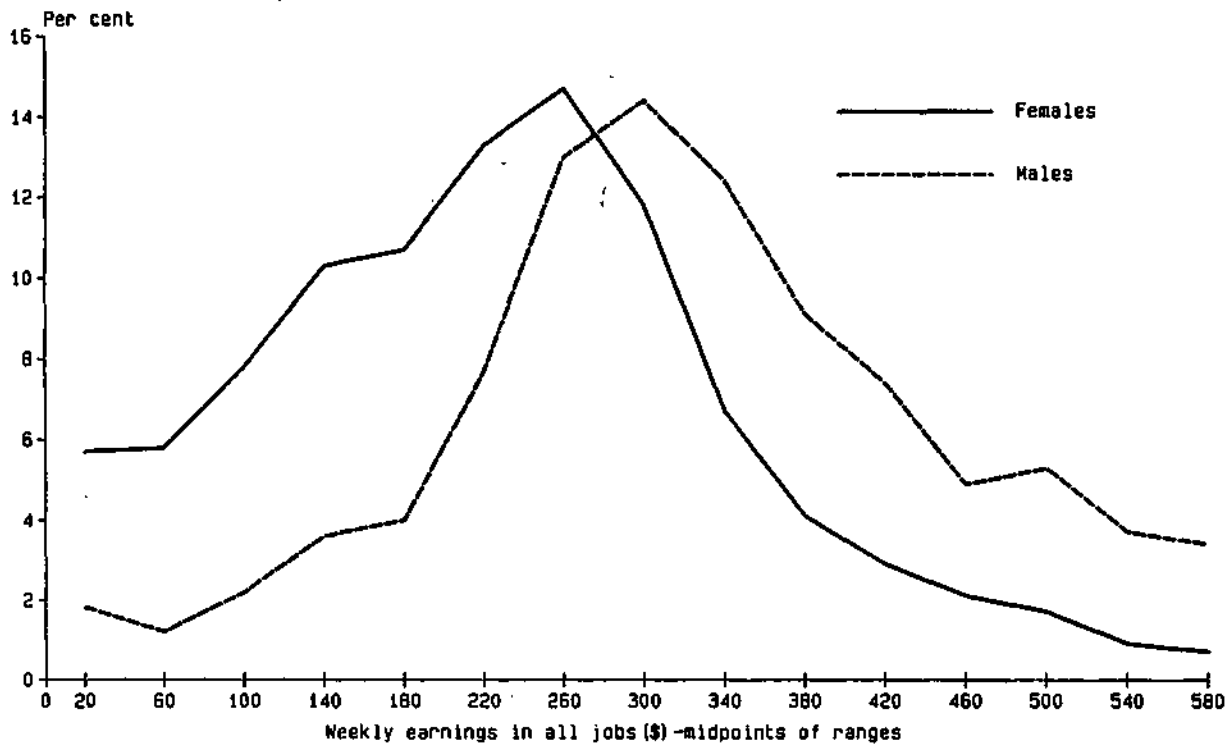
Source: Distribution and Composition of Employee Earnings and Hours, Australia, May 1983 (6306.0).

TABLE 6.9. PART-TIME NON-MANAGERIAL EMPLOYEES : WEEKLY EARNINGS AND HOURS PAID FOR, MAY 1983

	Males		Females	
	Number ('000)	Per cent of total	Number ('000)	Per cent of total
WEEKLY EARNINGS				
<i>Weekly earnings (\$)—</i>				
Under 20	16.6	6.8	18.3	2.8
20 and under 30	15.8	6.5	35.9	5.4
30 .. 40	22.5	9.2	31.5	4.8
40 .. 50	19.3	7.9	29.8	4.5
50 .. 60	15.8	6.5	31.9	4.8
60 .. 70	22.3	9.1	34.9	5.3
70 .. 80			30.6	4.6
80 .. 90	15.8	6.5	30.0	4.6
90 .. 100	14.2	5.8	29.2	4.4
100 .. 110			34.5	5.2
110 .. 120	11.3	4.6	36.6	5.6
120 .. 130	17.0	6.9	33.2	5.0
130 .. 140			27.7	4.2
140 .. 150	17.2	7.0	28.4	4.3
150 .. 160			29.6	4.5
160 .. 170	14.1	5.8	24.8	3.8
170 .. 180			22.6	3.4
180 .. 190	11.0	4.5	22.1	3.4
190 .. 200			19.0	2.9
200 .. 210	13.7	5.6	19.0	2.9
210 .. 220			12.9	2.0
220 .. 230	13.7	5.6	11.5	1.7
230 .. 240			11.0	1.7
240 .. 250	18.3	7.5	16.7	1.6
250 .. 260				0.9
260 and over	18.3	7.5	37.0	5.6
Total	244.7	100.0	658.8	100.0
—dollars—				
Median earnings	85.10	..	115.40	..
Mean earnings	113.50	..	125.40	..
WEEKLY HOURS PAID FOR				
<i>Total weekly hours—</i>				
Under 4	18.1	7.4	26.1	4.0
4 and under 6	26.2	10.7	43.2	6.6
6 .. 8	22.3	9.1	39.8	6.0
8 .. 10	37.6	15.4	60.6	9.2
10 .. 12	15.2	6.2	51.9	7.9
12 .. 14	19.4	7.9	43.8	6.6
14 .. 16	13.1	5.4	48.7	7.4
16 .. 18	22.2	9.1	45.7	6.9
18 .. 20			36.9	5.6
20 .. 22	23.3	9.5	71.6	10.9
22 .. 24			24.6	3.7
24 .. 26	15.3	6.3	48.0	7.3
26 .. 28			21.9	3.3
28 .. 30	13.5	5.5	18.3	2.8
30 .. 32			38.8	5.9
32 .. 34	18.4	7.5	21.1	3.2
34 and over			17.9	2.7
Total	244.7	100.0	658.8	100.0
—hours—				
Median weekly hours	12.0	..	16.1	..
Mean weekly hours	14.5	..	16.9	..

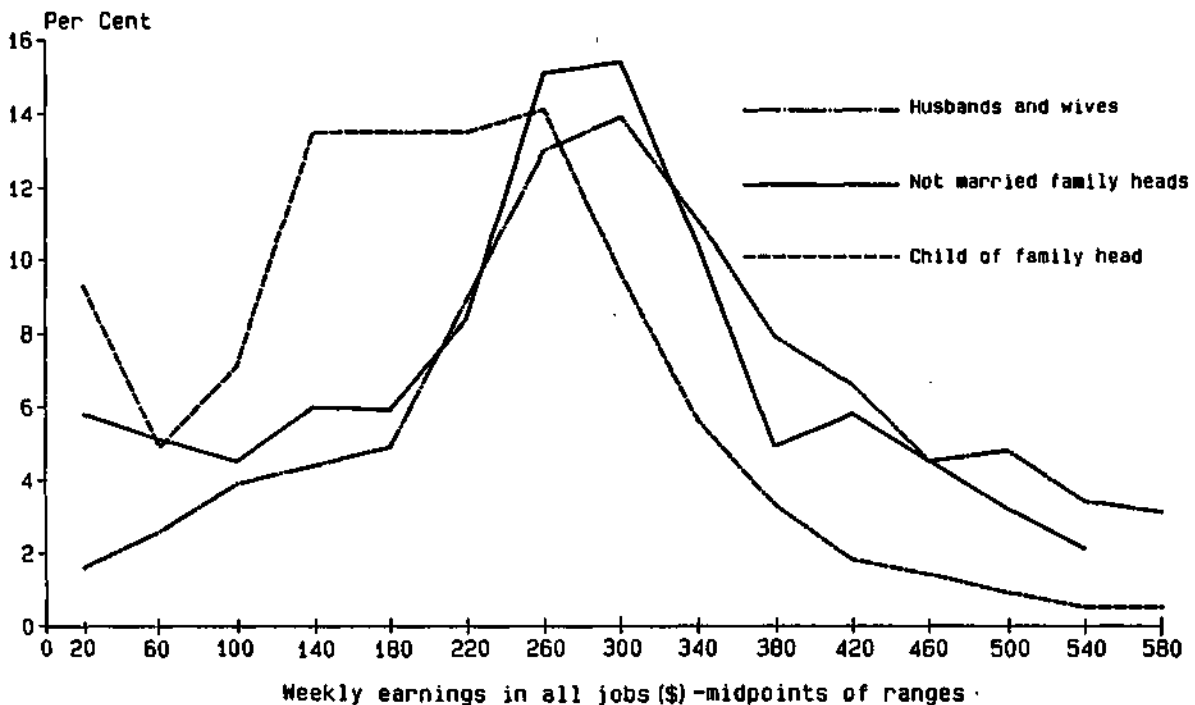
Source : Distribution and Composition of Employee Earnings and Hours, Australia, May 1983 (6306.0).

**CHART 6.e. ALL EMPLOYEES : DISTRIBUTION OF WEEKLY EARNINGS
IN ALL JOBS, AUGUST, 1984**



Source: Weekly earnings of Employees (Distribution), Australia, August 1984 (5310.0).

**CHART 6.f. ALL EMPLOYEES : DISTRIBUTION OF WEEKLY EARNINGS IN
ALL JOBS AND SELECTED FAMILY STATUS CHARACTERISTICS, AUGUST 1984**



Source: Weekly Earnings of Employees (Distribution), Australia, August, 1984 (5310.0).

TABLE 6.10. ALL EMPLOYEES(a): WEEKLY EARNINGS IN ALL JOBS AND AGE, AUGUST 1984
(' 000)

Weekly earnings in all jobs(\$)			Age group(years)							Total	
			15-19	20-24	25-34	35-44	45-54	55-59	60 and over		20 and over
MALES											
Under 40			33.0	6.9	3.3	6.6	*	*	4.8	24.6	57.5
40 and under	80		16.3	7.2	3.4	3.6	*	*	3.3	21.2	37.6
80	..	120	35.6	11.6	6.4	6.4	4.9	*	3.8	34.9	70.5
120	..	160	65.6	17.4	13.1	7.3	7.3	*	*	49.9	115.5
160	..	200	55.9	25.9	17.9	12.3	9.3	4.0	5.2	74.6	130.5
200	..	240	31.9	63.4	60.7	32.9	33.6	17.2	8.9	216.7	248.6
240	..	280	21.9	100.2	117.6	74.6	61.1	30.7	16.6	400.9	422.8
280	..	320	11.6	75.5	146.5	103.0	72.9	38.3	18.0	454.2	465.8
320	..	360	5.6	59.1	135.7	91.8	65.6	28.1	15.2	395.5	401.2
360	..	400	*	35.5	101.0	80.6	44.9	20.7	8.8	291.4	293.9
400	..	440	*	20.2	86.6	70.7	40.8	14.0	4.8	237.0	238.9
440	..	480	*	11.2	54.2	51.8	28.5	9.3	*	157.8	158.8
480	..	520	*	8.2	59.8	61.1	28.8	8.9	6.0	172.8	173.3
520	..	560	*	6.0	39.0	38.2	23.1	9.4	*	118.1	119.3
560	..	600	*	5.2	31.4	41.3	22.6	6.1	3.6	110.2	110.3
600 and over			*	6.7	54.0	68.6	44.3	16.9	4.4	194.9	195.8
Total			285.7	460.0	930.5	750.9	491.5	210.4	111.4	2,954.7	3,240.4
FEMALES											
Under 40			52.6	11.5	18.1	18.6	12.2	3.9	3.8	68.2	120.8
40 and under	80		26.5	14.4	24.6	31.3	17.6	4.9	*	95.5	122.0
80	..	120	28.3	18.6	37.4	45.2	25.9	5.7	4.1	137.0	165.3
120	..	160	63.9	23.9	40.2	47.2	29.5	9.1	4.5	154.4	218.4
160	..	200	55.9	41.5	42.4	50.4	24.6	7.4	4.3	170.6	226.5
200	..	240	27.5	76.4	63.3	61.6	36.5	10.7	5.1	253.6	281.1
240	..	280	11.8	96.2	79.4	63.2	42.1	13.7	4.2	298.8	310.7
280	..	320	4.5	61.8	83.4	52.6	34.2	8.5	3.9	244.5	249.0
320	..	360	*	30.6	49.8	32.8	20.3	4.0	*	140.0	141.8
360	..	400	*	15.8	35.7	18.6	12.1	*	*	85.8	86.7
400	..	440	*	9.8	27.1	13.7	7.8	*	*	61.9	62.3
440	..	480	*	3.0	21.5	10.9	6.7	*	*	44.2	44.2
480 and over			*	7.7	35.1	28.1	12.4	4.4	*	88.3	89.0
Total			275.0	411.2	558.1	474.2	281.9	78.0	39.3	1,842.8	2,117.8
PERSONS											
Under 40			85.6	18.4	21.5	25.3	14.3	4.7	8.6	92.8	178.3
40 and under	80		42.8	21.5	28.0	34.9	19.3	7.0	6.1	116.7	159.5
80	..	120	63.9	30.3	43.8	51.7	30.7	7.5	7.9	171.9	235.8
120	..	160	129.6	41.2	53.3	54.5	36.8	11.0	7.4	204.3	333.9
160	..	200	111.9	67.4	60.3	62.7	33.8	11.4	9.5	245.2	357.1
200	..	240	59.4	139.8	124.0	94.5	70.1	27.9	14.0	470.3	529.7
240	..	280	33.8	196.4	197.0	137.8	103.3	44.4	20.9	699.7	733.5
280	..	320	16.1	137.3	229.9	155.6	107.2	46.8	22.0	698.9	714.7
320	..	360	7.5	89.7	185.5	124.5	85.9	32.1	17.9	535.5	542.9
360	..	400	3.3	51.3	136.6	99.1	57.0	23.5	9.7	377.3	380.6
400	..	440	*	30.0	113.7	84.4	48.6	15.4	6.9	298.9	301.2
440	..	480	*	14.2	75.8	62.8	35.2	11.1	3.0	202.0	203.0
480	..	520	*	10.0	76.5	72.2	33.8	9.6	6.3	208.5	209.0
520	..	560	*	7.3	46.4	45.9	24.8	10.6	*	137.5	138.7
560	..	600	*	7.3	35.3	44.9	25.5	7.5	3.6	124.2	124.6
600 and over			*	9.2	61.1	74.3	47.1	18.0	4.5	214.1	215.5
Total			560.6	871.2	1,488.6	1,225.1	773.4	288.4	150.7	4,797.5	5,358.2

(a) Wage and salary earners. Estimates of employed wage and salary earners may differ from estimates obtained from the labour force survey and other sources given elsewhere in this publication.

Source: *Weekly Earnings of Employees (Distribution), Australia, August 1984* (6310.0).

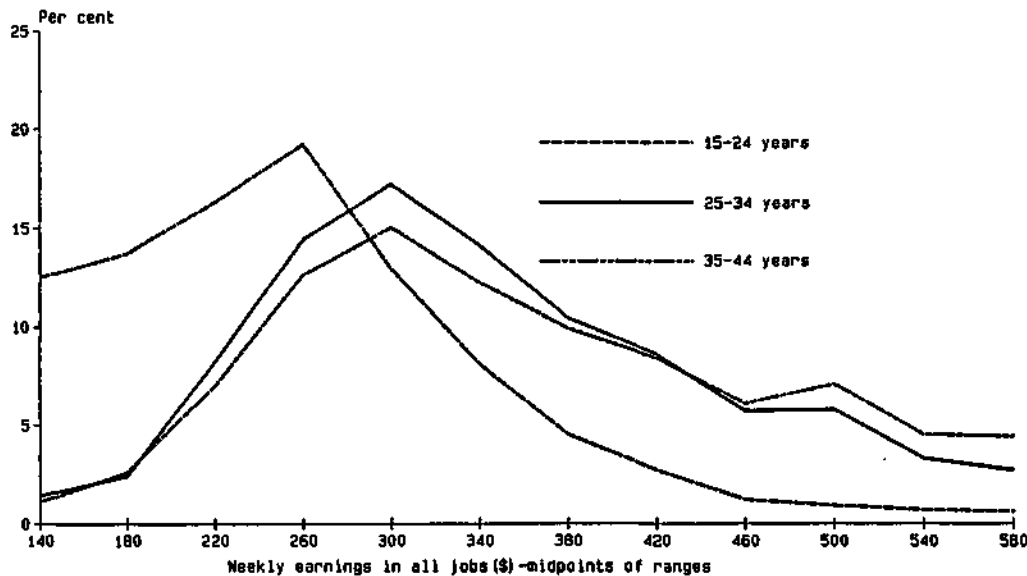
TABLE 6.11. ALL EMPLOYEES(a): WEEKLY EARNINGS IN ALL JOBS, MARITAL STATUS AND FULL-TIME OR PART-TIME STATUS, AUGUST 1984
(' 000)

Weekly earnings in all jobs(\$)	Males			Females			Persons		
	Married	Not-married	Total	Married	Not-married	Total	Married	Not-married	Total
FULL-TIME EMPLOYEES									
Under 120	21.3	47.3	68.6	15.5	32.2	47.7	36.8	79.5	116.3
120 and under 160	18.9	80.1	99.0	15.7	74.2	89.8	34.6	154.3	188.9
160 .. 200	33.8	83.4	117.3	41.5	87.1	128.6	75.3	170.5	245.8
200 .. 240	122.9	114.4	237.3	113.3	104.0	217.3	236.2	218.4	454.6
240 .. 280	252.0	164.3	416.3	141.9	129.1	271.1	394.0	293.4	687.4
280 .. 320	312.9	147.2	460.1	122.6	105.1	227.7	435.6	252.3	687.9
320 .. 360	285.6	110.2	395.7	71.3	63.1	134.5	356.9	173.3	530.2
360 .. 400	211.0	80.3	291.2	41.6	38.6	80.1	252.5	118.8	371.4
400 .. 440	183.4	52.0	235.5	28.2	30.1	58.4	211.6	82.2	293.8
440 .. 480	118.5	36.7	155.3	23.8	17.9	41.7	142.3	54.7	197.0
480 .. 520	135.2	35.0	170.2	18.6	15.0	33.6	153.9	50.0	203.9
520 .. 560	95.9	22.2	118.1	10.7	7.1	17.8	106.6	29.3	135.9
560 .. 600	90.6	17.2	107.9	8.2	5.0	13.2	98.9	22.2	121.1
600 and over	159.3	32.6	191.9	9.1	8.4	17.5	168.4	40.9	209.3
Total	2,041.6	1,022.8	3,064.4	662.1	716.9	1,379.0	2,703.7	1,739.7	4,443.4
PART-TIME EMPLOYEES									
Under 40	5.7	41.9	47.6	41.1	73.3	114.4	46.8	115.2	162.0
40 and under 80	6.4	22.4	28.7	70.4	43.3	113.7	76.8	65.6	142.4
80 .. 120	5.9	14.7	20.6	102.5	29.9	132.3	108.4	44.6	153.0
120 .. 160	5.6	11.0	16.5	105.5	23.0	128.5	111.1	33.9	145.0
160 .. 200	5.7	7.6	13.3	79.5	18.5	98.0	85.2	26.1	111.2
200 .. 240	7.2	4.2	11.4	52.3	11.5	63.7	59.5	15.6	75.1
240 .. 280	3.0	3.5	6.5	32.0	7.7	39.6	34.9	11.2	46.1
280 .. 320	*	3.0	5.6	15.6	5.6	21.3	18.2	8.6	26.9
320 .. 360	3.4	*	5.4	4.6	*	7.3	8.1	4.6	12.7
360 and over	15.6	4.8	20.3	12.0	8.0	20.0	27.6	12.7	40.3
Total	61.1	114.9	176.0	515.5	223.3	738.8	576.6	338.2	914.7

(a) Wage and salary earners only. Estimates of employed wage and salary earners may differ from estimates of employees obtained from the labour force survey and other sources given elsewhere in this publication.

Source: *Weekly Earnings of Employees (Distribution), Australia, August 1984* (6310.0).

CHART 6.g. FULL TIME EMPLOYEES : DISTRIBUTION OF WEEKLY EARNINGS IN ALL JOBS AND SELECTED AGE GROUPS, AUGUST 1984



Source: *Weekly Earnings of Employees (Distribution), Australia, August, 1984* (6310.0).

TABLE 6.12: ALL EMPLOYEES(a): WEEKLY EARNINGS IN ALL JOBS AND FAMILY STATUS, AUGUST 1984 ('000)

Family status												
Member of a family												
Husband or wife												
Weekly earnings in all jobs(\$)			With children aged 0-14 present	Without children aged 0-14 present	Total	Not-married family head	Child of family head	Other relative of family head	Total	Not a member of a family	Not family coded	Total
MALES												
Under 40			5.1	5.9	11.1	*	35.9	*	48.0	5.4	4.1	57.5
40 and under	80		3.6	6.4	10.1	*	19.7	*	31.0	4.9	*	37.6
80	..	120	7.9	9.3	17.2	*	40.3	*	58.5	8.5	3.5	70.5
120	..	160	12.1	11.5	23.6	*	71.7	*	98.3	11.8	5.4	115.5
160	..	200	20.7	17.4	38.0	*	69.1	*	111.0	13.0	6.5	130.5
200	..	240	73.0	52.1	125.1	*	72.3	5.8	205.8	29.9	13.0	248.6
240	..	280	139.3	109.0	248.3	6.7	85.5	6.8	347.3	59.0	16.5	422.8
280	..	320	180.5	129.0	309.5	8.3	64.1	6.0	387.9	63.0	14.8	465.8
320	..	360	164.1	118.1	282.2	6.4	41.8	4.5	335.0	52.4	13.7	401.2
360	..	400	130.2	76.5	206.6	3.3	24.4	*	236.7	45.3	12.0	293.9
400	..	440	111.9	70.2	182.1	3.5	12.8	*	199.5	32.6	6.8	238.9
440	..	480	76.5	41.7	118.2	*	11.1	*	133.4	20.2	5.1	158.8
480	..	520	89.9	44.0	133.9	3.1	6.9	*	144.4	22.9	6.0	173.3
520	..	560	59.1	36.4	95.4	*	4.3	*	102.5	12.5	4.3	119.3
560	..	600	62.1	28.8	90.9	*	3.0	*	95.2	11.9	3.2	110.3
600 and over			100.2	54.8	154.9	*	4.8	*	162.2	23.4	10.2	195.8
Total			1,236.3	811.0	2,047.3	45.2	567.8	36.5	2,696.9	416.7	126.8	3,240.4
FEMALES												
Under 40			27.1	14.1	41.3	9.5	54.2	*	106.2	7.7	6.8	120.8
40 and under	80		47.8	24.1	71.9	8.0	27.5	*	108.7	7.6	5.6	122.0
80	..	120	70.8	37.2	108.0	7.5	28.5	*	145.1	11.7	8.4	165.3
120	..	160	69.9	46.9	116.8	9.2	59.5	*	187.7	18.8	11.9	218.4
160	..	200	68.8	47.5	116.3	9.2	61.5	*	189.3	26.1	11.2	226.5
200	..	240	79.1	79.6	158.7	12.0	58.6	*	231.9	35.0	14.2	281.1
240	..	280	69.6	96.3	166.0	19.2	51.7	4.8	241.7	53.8	15.1	310.7
280	..	320	51.4	82.1	133.5	18.2	29.2	3.8	184.8	53.6	10.6	249.0
320	..	360	28.1	43.6	71.7	11.4	12.6	*	98.2	35.9	7.7	141.8
360	..	400	14.5	29.5	43.9	5.2	7.5	*	57.4	26.9	*	86.7
400	..	440	10.3	18.5	28.8	6.5	4.7	*	40.4	18.4	3.6	62.3
440	..	480	11.1	13.3	24.3	5.3	*	*	32.2	10.8	*	44.2
480	..	520	8.7	10.5	19.2	*	*	*	24.0	10.2	*	35.7
520	..	560	5.6	5.7	11.3	*	*	*	13.4	4.8	*	19.4
560	..	600	3.0	5.6	8.7	*	*	*	10.5	3.2	*	14.2
600 and over			3.9	6.3	10.2	*	*	*	12.8	5.6	*	19.8
Total			569.7	560.9	1,130.7	126.7	403.2	23.7	1,684.3	330.1	103.3	2,117.8

(a) Wage and salary earners only. Estimates of employed wage and salary earners may differ from estimates of employees obtained from the labour force survey and other sources given elsewhere in this publication.

Source: Weekly Earnings of Employees (Distribution), Australia, August 1984 (6310.0).

TABLE 6.13. FULL-TIME EMPLOYEES IN THEIR MAIN JOB(a) : NUMBER AND CUMULATIVE PER CENT OF EMPLOYEES AT EACH LEVEL OF EARNINGS AND OCCUPATION, AUGUST 1984

Weekly earnings (\$) in main job		Professional, technical, etc.	Administrative, executive and managerial	Clerical	Sales	Farm workers, etc.	Transport and communication	Tradespersons, production-process workers and labourers, n.e.c.(b)	Service, sport and recreation	Total
MALES										
— '000 —										
Under 120		4.9	6.3	3.6	4.8	12.5	*	31.4	4.3	69.4
120 and under 160	160	4.0	*	7.3	8.2	10.9	3.1	57.9	6.4	100.1
160 .. 200	200	5.6	3.6	14.1	8.3	10.8	6.0	64.6	5.7	118.7
200 .. 240	240	12.0	9.0	24.2	14.8	29.9	14.6	118.3	17.9	240.6
240 .. 280	280	23.8	16.3	37.4	25.5	23.7	35.0	230.1	27.0	418.7
280 .. 320	320	32.1	25.9	48.3	33.6	15.9	40.3	237.5	27.9	461.5
320 .. 360	360	35.4	28.4	46.8	24.6	7.2	27.3	208.7	19.0	397.5
360 .. 400	400	42.7	24.5	36.9	17.3	5.0	20.0	132.1	13.4	291.8
400 .. 440	440	48.7	28.9	27.7	9.2	3.1	10.6	89.5	15.1	232.9
440 .. 480	480	39.4	20.3	19.2	7.1	*	11.7	43.8	9.7	152.9
480 .. 520	520	55.2	26.2	16.5	4.9	*	8.2	45.0	10.6	169.3
520 .. 560	560	38.5	20.8	10.0	5.0	*	4.9	30.5	7.0	116.9
560 .. 600	600	36.6	22.4	7.7	3.7	*	6.3	24.5	4.1	106.5
600 and over		67.1	42.5	10.3	5.1	*	12.1	43.1	5.5	187.7
Total		446.1	277.3	310.0	172.0	126.6	201.8	1,356.9	173.6	3,064.4
— cumulative per cent —										
Under 120		1.1	2.3	1.2	2.8	9.8	*	2.3	2.5	2.3
.. 160	160	2.0	3.1	3.5	7.6	18.4	2.4	6.6	6.2	5.5
.. 200	200	3.3	4.4	8.1	12.4	26.9	5.3	11.3	9.5	9.4
.. 240	240	6.0	7.6	15.9	21.0	50.5	12.6	20.1	19.8	17.3
.. 280	280	11.3	13.5	27.9	35.8	69.2	29.9	37.0	35.3	30.9
.. 320	320	18.5	22.8	43.5	55.3	81.8	49.9	54.5	51.4	46.0
.. 360	360	26.4	33.1	58.6	69.6	87.5	63.4	69.9	62.3	59.0
.. 400	400	36.0	41.9	70.5	79.7	91.4	73.3	79.6	70.1	68.5
.. 440	440	46.9	52.3	79.4	85.0	93.9	78.6	86.2	78.8	76.1
.. 480	480	55.8	59.7	85.6	89.1	95.2	84.4	89.5	84.3	81.1
.. 520	520	68.1	69.1	90.9	92.0	97.3	88.5	92.8	90.5	86.6
.. 560	560	76.8	76.6	94.2	94.9	97.4	90.9	95.0	94.5	90.4
.. 600	600	85.0	84.7	96.7	97.0	98.4	94.0	96.8	96.9	93.9
Total		100.0	100.0	100.0	100.0	100.0	100.0	100.0	100.0	100.0

For footnotes see end of table.

TABLE 6.13. FULL-TIME EMPLOYEES IN THEIR MAIN JOB(a) : NUMBER AND CUMULATIVE PER CENT OF EMPLOYEES AT EACH LEVEL OF EARNINGS AND OCCUPATION, AUGUST 1984—continued

Weekly earnings (\$) in main job	Professional, technical, etc.	Administrative, executive and managerial	Clerical	Sales	Farm workers, etc.	Transport and communication	Tradespersons, production-workers and labourers, n.e.c.(b)	Service, sport and recreation	Total
FEMALES									
—'000—									
Under 120	5.6	*	14.5	5.5	*	*	6.6	12.0	49.1
120 and under 160	6.4	*	39.3	21.6	*	*	9.3	10.4	91.4
160 .. 200	11.3	*	58.2	20.1	*	*	19.0	16.3	128.9
200 .. 240	21.2	3.4	83.0	24.2	*	*	53.2	30.2	219.3
240 .. 280	30.4	5.3	124.3	27.2	*	5.8	40.0	35.2	270.2
280 .. 320	39.9	6.1	123.6	10.1	*	6.9	16.2	23.6	227.7
320 .. 360	35.1	4.3	63.5	6.4	*	*	8.4	13.8	133.8
360 .. 400	34.6	*	32.3	*	*	*	*	4.1	78.9
400 .. 440	35.3	3.0	13.6	*	*	*	*	*	57.3
440 and over	85.8	7.1	18.6	*	*	*	*	5.7	122.4
Total	305.6	34.7	571.0	120.8	11.9	22.7	158.6	153.6	1,379.0
— cumulative per cent —									
Under 120	1.8	*	2.5	4.6	*	*	4.1	7.8	3.6
.. 160	3.9	*	9.4	22.5	43.7	*	10.0	14.6	10.2
.. 200	7.6	8.7	19.6	39.1	56.0	16.2	22.0	25.2	19.5
.. 240	14.6	18.3	34.2	59.2	67.8	28.1	55.5	44.8	35.4
.. 280	24.5	33.7	55.9	81.6	83.6	53.8	80.7	67.7	55.0
.. 320	37.6	51.3	77.6	90.0	94.7	84.4	90.9	83.1	71.5
.. 360	49.1	63.7	88.7	95.3	100.0	91.1	96.2	92.1	81.2
.. 400	60.4	71.0	94.4	97.2	100.0	97.4	97.2	94.8	87.0
.. 440	71.9	79.6	96.7	97.9	100.0	98.0	98.6	96.3	91.1
Total	100.0	100.0	100.0	100.0	100.0	100.0	100.0	100.0	100.0

(a) Wage and salary earners only. Estimates of employed wage and salary earners may differ from estimates of employees obtained from the labour force survey and other sources given elsewhere in this publication. (b) Includes miners and quarry workers.

Source: *Weekly Earnings of Employees (Distribution), Australia, August 1984* (6310.0).

TABLE 6.14. FULL-TIME EMPLOYEES(a): NUMBER AND CUMULATIVE PER CENT OF EMPLOYEES AT EACH LEVEL OF EARNINGS AND AGE, AUGUST 1984

Weekly earnings (\$) in all jobs	Males						Females					
	Age group (years)						Age group (years)					
	15-24	25-44	45-59	15-19	20 and over	Total	15-24	25-44	45-59	15-19	20 and over	Total
NUMBER('000)												
Under 120	39.1	19.2	7.4	31.3	37.3	68.6	27.2	12.5	6.9	21.3	26.4	47.7
120 and under 160	74.7	16.1	6.4	61.9	37.1	99.0	71.5	11.9	5.2	59.5	30.3	89.8
160 .. 200	75.5	26.2	11.8	52.2	65.1	117.3	83.9	30.4	13.0	51.5	77.0	128.6
200 .. 240	92.8	89.0	48.4	31.0	206.3	237.3	97.7	85.4	31.5	26.9	190.4	217.3
240 .. 280	120.3	189.2	90.9	21.7	394.6	416.3	103.9	120.8	44.0	11.5	259.5	271.1
280 .. 320	85.5	247.4	109.5	11.4	448.8	460.1	64.5	122.4	37.6	4.4	223.3	227.7
320 .. 360	63.3	224.7	93.0	5.4	390.4	395.7	31.7	77.2	23.2	*	132.9	134.5
360 .. 400	37.4	180.1	65.4	*	288.8	291.2	15.4	50.6	13.2	*	79.8	80.1
400 .. 440	22.0	155.7	53.1	*	233.6	235.5	9.9	37.5	8.9	*	57.9	58.4
440 .. 480	11.7	103.7	37.2	*	154.3	155.3	*	30.5	8.0	*	41.7	41.7
480 .. 520	8.8	119.0	37.1	*	169.7	170.2	*	25.8	5.7	*	33.6	33.6
520 .. 560	7.3	76.4	32.3	*	116.9	118.1	*	14.1	*	*	17.8	17.8
560 .. 600	5.2	71.1	28.1	*	107.8	107.9	*	6.9	4.0	*	13.0	13.2
600 and over	7.3	120.5	60.1	*	191.0	191.9	*	11.5	3.4	*	16.9	17.5
Total	650.8	1,638.4	680.8	222.8	2,841.6	3,064.4	516.3	637.4	207.3	178.3	1,200.7	1,379.0
CUMULATIVE PERCENTAGES												
Under 120	6.0	1.2	1.1	14.1	1.3	2.2	5.3	2.0	3.3	12.0	2.2	3.5
.. 160	17.5	2.2	2.0	41.8	2.6	5.5	19.1	3.8	5.8	45.3	4.7	10.0
.. 200	29.1	3.8	3.8	65.2	4.9	9.3	35.4	8.6	12.1	74.2	11.1	19.3
.. 240	43.3	9.2	10.9	79.2	12.2	17.0	54.3	22.0	27.3	89.3	27.0	35.1
.. 280	61.8	20.7	24.2	88.9	26.0	30.6	74.4	40.9	48.6	95.8	48.6	54.7
.. 320	75.0	35.8	40.3	94.0	41.8	45.6	86.9	60.1	66.7	98.3	67.2	71.2
.. 360	84.7	49.6	54.0	96.4	55.6	58.6	93.1	72.3	77.9	99.1	78.3	81.0
.. 400	90.4	60.5	63.6	97.5	65.7	68.1	96.0	80.2	84.2	99.3	84.9	86.8
.. 440	93.8	70.1	71.4	98.4	74.0	75.7	97.9	86.1	88.5	99.6	89.8	91.0
.. 480	95.6	76.4	76.8	98.8	79.4	80.8	98.5	90.9	92.4	99.6	93.2	94.0
.. 520	97.0	83.6	82.3	99.1	85.4	86.4	98.8	94.9	95.2	99.6	96.0	96.5
.. 560	98.1	88.3	87.0	99.6	89.5	90.2	99.1	97.1	96.4	99.6	97.5	97.8
.. 600	98.9	92.6	91.2	99.6	93.3	93.7	99.5	98.2	98.4	99.7	98.6	98.7
Total	100.0	100.0	100.0	100.0	100.0	100.0	100.0	100.0	100.0	100.0	100.0	100.0

(a) Wage and salary earners only. Estimates of employed wage and salary earners may differ from estimates of employees obtained from the labour force survey and other sources given elsewhere in this publication.

Source: *Weekly Earnings of Employees (Distribution), Australia, August 1984* (6310.0).

TABLE 6.15. EMPLOYEES WHO WORKED IN A SECOND JOB : WEEKLY EARNINGS IN MAIN JOB AND WEEKLY EARNINGS IN SECOND JOB, AUGUST 1984

	Males				Females			
	Weekly earnings in second job			Mean weekly earnings in second job	Weekly earnings in second job			Mean weekly earnings in second job
	Under \$30	\$30 and over	Total		Under \$30	\$30 and over	Total	
Weekly earnings in main job (\$)—	'000	'000	'000	\$	'000	'000	'000	\$
Under 120	*	*	5.3	44	4.7	9.0	13.6	52
120 and under 200	*	4.2	4.9	74	*	7.6	10.3	74
200 .. 240	*	4.7	5.7	66	*	3.5	5.3	63
240 .. 320	3.1	11.9	15.0	73	*	5.1	6.0	78
320 and over	3.5	23.9	27.4	88	*	3.9	5.6	73
Total	11.3	47.0	58.3	77	11.6	29.1	40.8	66
				—dollars—				
Median earnings in main job	275	323	312	..	145	174	164	..
Mean earnings in main job	285	342	331	..	172	199	191	..

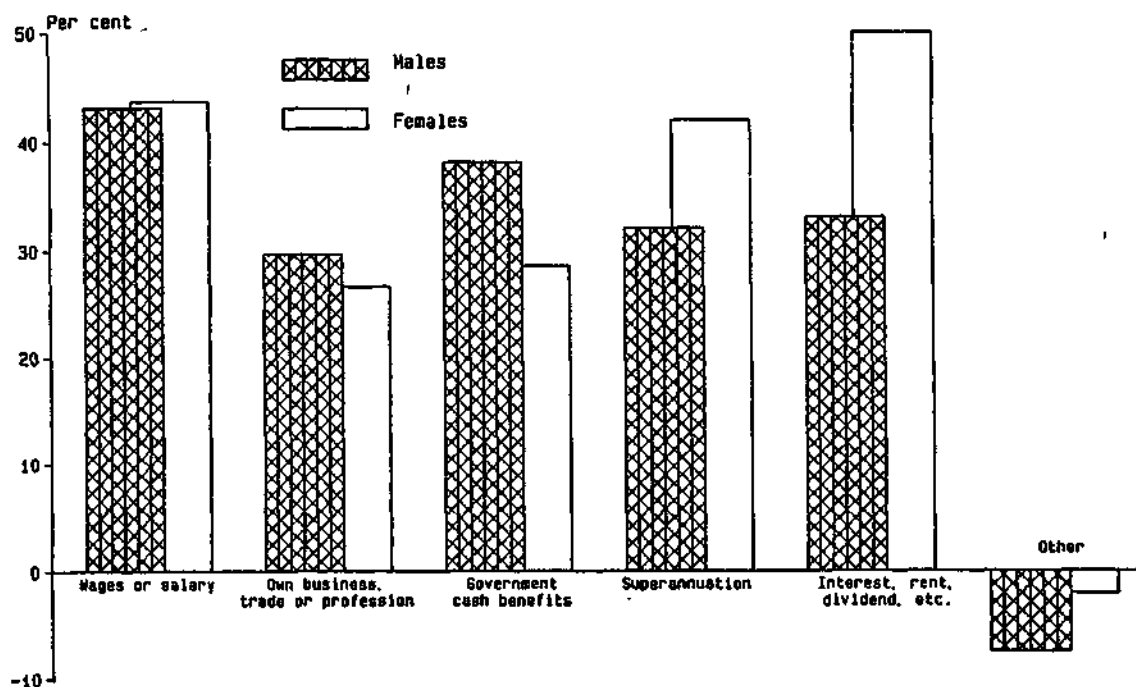
Source: *Weekly Earnings of Employees (Distribution), Australia, August 1984 (6310.0)*.

TABLE 6.16. EMPLOYEES WHO WORKED IN A SECOND JOB : HOURS WORKED IN SECOND JOB, HOURS WORKED IN MAIN JOB AND NUMBER, MEDIAN AND MEAN WEEKLY EARNINGS IN ALL JOBS, AUGUST 1984

Hours worked in second job	Hours worked in main job						Total		
	Under 35			35 and over					
	Number of employees ('000)	Median earnings (\$)	Mean earnings (\$)	Number of employees ('000)	Median earnings (\$)	Mean earnings (\$)	Number of employees ('000)	Median earnings (\$)	Mean earnings (\$)
	MALES								
Under 5	5.7	216	231	9.3	410	437	15.0	326	359
5 and over	12.3	367	372	31.0	420	445	43.3	411	425
Total	18.0	312	328	40.3	418	443	58.3	401	408
FEMALES									
Under 5	10.1	158	185	3.9	294	317	14.0	189	221
5 and over	19.5	218	243	7.2	355	363	26.8	258	275
Total	29.6	195	223	11.1	338	347	40.8	241	257

Source: *Weekly Earnings of Employees (Distribution), Australia, August 1984 (6310.0)*.

CHART 6.h. ALL INCOME RECIPIENTS : PERCENTAGE INCREASE IN MEAN ANNUAL INCOME BY PRINCIPAL SOURCE BETWEEN 1978-79 AND 1981-82



Source: Income and Housing Survey—Income of Individuals, Australia (6502.0).

TABLE 6.17. ALL INCOME RECIPIENTS : PRINCIPAL SOURCE OF TOTAL ANNUAL INCOME AND MEAN ANNUAL INCOME, AUSTRALIA, 1981-82

Principal source of income	Males	Married females	Other females(a)	All females	All persons	
					1981-82	1978-79(b)
NUMBERS ('000)						
Wages or salary	3,299.8	1,188.4	777.8	1,966.3	5,266.0	5,206.4
Own business, trade or profession	700.4	372.7	31.6	404.2	1,104.6	1,052.3
Government cash benefits	783.2	1,236.1	733.6	1,969.8	2,752.9	2,789.2
Superannuation	72.8	5.2	31.0	36.2	109.9	89.2
Interest, rent, dividend, etc.	156.1	351.4	72.2	423.5	579.7	385.7
Other	54.2	25.0	33.6	58.6	112.8	67.7
Total	5,066.4	3,178.8	1,679.8	4,858.6	9,925.1	9,590.4
PER CENT						
Wages or salary	61.2	37.4	46.3	40.5	53.1	54.3
Own business, trade or profession	13.8	11.7	1.9	8.3	11.1	10.9
Government cash benefits	15.5	38.9	43.7	40.5	27.7	29.1
Superannuation	1.4	0.2	1.8	0.7	1.1	0.9
Interest, rent, dividend, etc.	3.1	11.1	4.3	8.7	5.8	4.0
Other	1.1	0.8	2.0	1.2	1.1	0.7
Total	100.0	100.0	100.0	100.0	100.0	100.0
MEAN ANNUAL INCOME(\$)						
Wages or salary	16,600	9,800	10,900	10,200	14,200	9,900
Own business, trade or profession	15,300	10,800	11,800	10,900	13,700	10,600
Government cash benefits	4,200	1,800	4,500	2,800	3,200	2,300
Superannuation	12,300	7,900	10,100	9,800	11,500	8,700
Interest, rent, dividend, etc.	9,200	4,000	9,000	4,800	6,000	4,100
Other	5,800	4,500	4,900	4,700	5,300	5,500
Total	14,100	6,100	7,900	6,700	10,500	7,500

(a) Includes separated, divorced, widowed and never married. (b) See Appendix II

Source: Income and Housing Survey—Income of Individuals, Australia (6502.0).