

CHAPTER 5

PERSONS NOT IN THE LABOUR FORCE

Persons not in the labour force represent that group of the population who during a particular week are not employed or unemployed. Interest in this group centres primarily around their potential to participate in the labour force. In addition to analysing persons not in the labour force by their demographic and family characteristics, attention is also focussed on their degree of attachment to the labour force. Aspects such as whether they want a job and whether they are discouraged jobseekers (i.e. whether they are out of the labour force because of economic circumstances) are given emphasis. Modifications introduced in the September 1983 survey have provided information on a new concept, 'marginal attachment to the labour force', and improvements in the measurement of discouraged jobseekers. These changes have caused a break in the series.

The sources for the statistics in this chapter are the ABS monthly labour force survey and its supplementaries. In particular a survey of persons not in the labour force is conducted twice a year to examine the labour force attachments of persons not in the labour force.

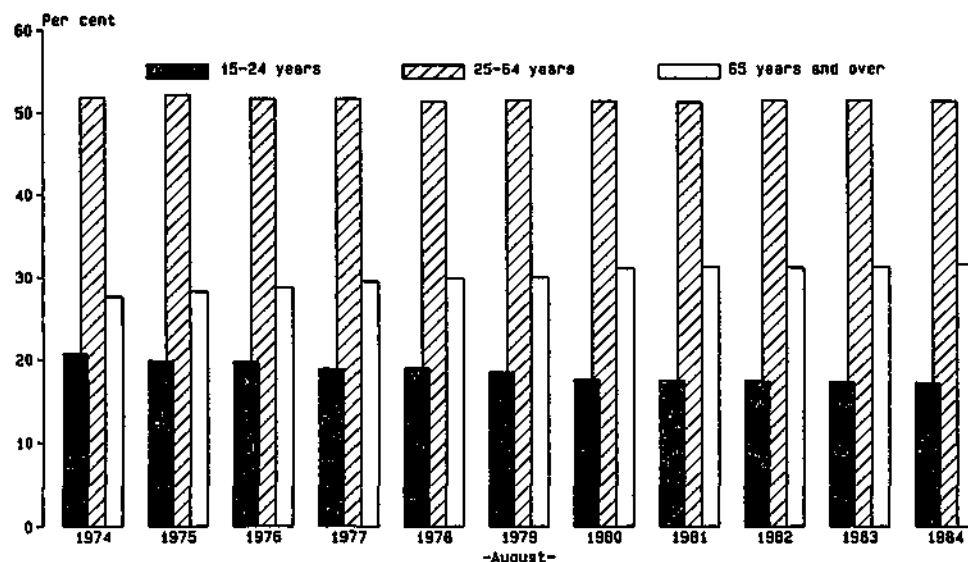
TABLE 5.1. CIVILIAN POPULATION AGED 15 AND OVER: LABOUR FORCE STATUS AND DETAILS OF PERSONS NOT IN THE LABOUR FORCE, SEPTEMBER 1983 AND 1984
(* 000)

	September 1983			September 1984		
	Males	Females	Persons	Males	Females	Persons
Civilian population aged 15 and over	5,725.7	5,859.9	11,585.5	5,812.3	5,995.7	11,808.0
Employed	3,979.6	2,370.3	6,350.0	4,059.1	2,513.8	6,572.9
Unemployed	435.3	283.4	718.7	376.8	244.5	621.3
Persons not in the labour force	1,310.7	3,206.1	4,516.8	1,376.5	3,237.4	4,613.8
With marginal attachment to the labour force	162.8	602.8	765.6	163.0	563.3	726.3
Wanted to work and available to start work within four weeks	142.0	591.7	733.7	144.6	551.5	696.1
Were actively looking for work	7.4	14.4	21.9	10.8	15.4	26.2
Were not actively looking for work	134.6	577.3	711.8	133.8	536.1	669.9
Discouraged jobseekers	26.4	91.8	118.2	19.0	74.7	93.7
Not actively looking for other reasons	108.2	485.4	593.6	114.8	461.5	576.2
Were actively looking for work but not available to start work within four weeks	20.8	11.1	31.9	18.4	11.8	30.2
Without marginal attachment to the labour force	1,147.9	2,603.3	3,751.2	1,213.5	2,674.0	3,887.6
Wanted to work but not actively looking for work and not available to start work within four weeks	64.8	179.4	244.2	67.6	196.4	264.1
Did not want to work	958.4	2,267.0	3,225.4	1,020.6	2,345.0	3,365.6
Permanently unable to work	44.9	32.4	77.3	33.5	23.0	56.5
Institutionalised(a)	79.8	124.5	204.3	91.7	109.6	201.4

(a) Includes students boarding at school, some patients in hospitals and sanatoria and inmates of reformatories, jails etc

Source: Persons Not in the Labour Force, Australia (6220 0)

CHART 5.a. PERSONS NOT IN THE LABOUR FORCE : AGE, AUGUST 1974 TO AUGUST 1984



Source: The Labour Force, Australia (8205 0).

TABLE 5.2. PERSONS NOT IN THE LABOUR FORCE, BY AGE, AUGUST 1974 TO AUGUST 1984
(^{'000})

	Age group (years)									
August	15-19	20-24	25-34	35-44	45-54	55-59	60-64	65-69	70 and over	Total
MALES										
1974	245.8	57.2	30.8	21.9	45.3	37.8	75.6	148.6	257.5	920.5
1975	242.2	56.9	33.5	25.6	48.4	37.9	87.4	156.9	267.7	956.6
1976	247.1	52.9	33.0	25.4	47.3	42.1	101.1	174.3	277.0	1,000.1
1977	240.4	51.2	34.3	24.3	53.8	45.5	106.3	180.4	288.8	1,024.9
1978	256.2	62.3	46.3	37.1	66.1	62.6	113.8	189.8	303.4	1,137.7
1979	254.6	60.2	49.1	37.9	68.5	64.8	130.0	198.3	314.2	1,177.6
1980	243.6	59.5	53.5	36.4	66.2	61.0	141.6	203.7	327.6	1,193.2
1981	248.0	56.3	56.9	44.5	67.1	69.7	143.5	208.1	342.4	1,236.6
1982	243.6	70.4	63.4	48.2	77.0	78.0	160.5	218.3	355.3	1,314.6
1983	271.0	69.0	57.2	52.1	74.5	82.0	183.2	216.3	373.8	1,379.2
1984	268.2	70.4	62.3	56.8	77.5	88.1	188.1	215.2	384.8	1,411.5
MARRIED FEMALES										
1974	28.9	168.4	501.0	338.4	367.1	172.2	161.4	116.5	110.1	1,964.1
1975	22.9	160.0	506.6	332.8	365.3	170.1	170.0	122.9	114.5	1,965.2
1976	22.1	153.5	519.2	332.4	342.9	178.4	175.6	126.1	125.7	1,975.9
1977	18.8	140.2	507.6	327.6	344.1	185.2	177.6	130.2	122.1	1,953.5
1978	19.4	137.2	500.4	306.0	337.6	191.8	177.2	137.9	132.5	1,939.9
1979	15.4	125.0	512.6	312.3	336.7	210.6	179.8	140.8	142.3	1,975.5
1980	16.5	122.1	488.2	311.6	323.1	199.0	178.1	144.7	149.4	1,932.6
1981	15.6	123.4	495.4	327.4	317.7	203.1	195.5	149.1	152.2	1,979.5
1982	18.3	126.7	485.9	341.2	316.2	210.7	201.4	152.8	160.6	2,013.9
1983	14.2	122.0	504.6	358.7	320.1	213.2	212.8	161.8	173.9	2,081.3
1984	14.0	111.5	479.8	368.8	307.3	207.3	211.4	163.9	183.2	2,047.2
ALL FEMALES										
1974	268.4	208.1	519.9	357.1	410.8	212.7	241.1	207.5	426.3	2,851.8
1975	255.1	201.1	529.8	350.7	408.7	216.9	247.6	217.1	432.6	2,859.6
1976	276.0	194.9	549.1	352.9	389.9	222.6	252.8	223.3	448.4	2,909.8
1977	264.5	184.4	541.7	351.2	390.3	229.3	252.1	232.2	458.6	2,904.3
1978	270.8	197.8	553.9	350.2	394.7	247.2	263.7	251.6	499.3	3,029.7
1979	288.0	188.6	574.9	358.5	395.9	269.5	264.3	263.6	513.8	3,117.0
1980	260.1	181.1	558.9	357.2	386.3	263.2	268.2	267.0	529.7	3,071.7
1981	272.6	188.7	571.9	378.3	375.7	260.5	284.3	271.8	550.8	3,154.6
1982	276.8	197.0	570.6	402.3	372.8	275.3	301.2	275.8	571.0	3,242.8
1983	270.2	193.4	588.8	421.2	381.4	267.7	303.3	280.8	592.3	3,299.1
1984	280.5	187.5	568.0	430.1	373.4	270.3	313.7	275.2	616.8	3,315.5
PERSONS										
1974	514.2	265.3	550.7	379.1	456.0	250.4	316.8	356.1	683.8	3,772.3
1975	497.3	258.0	563.3	376.3	457.1	254.8	335.0	374.0	700.3	3,816.2
1976	523.1	247.8	582.0	378.2	437.2	264.7	353.9	397.6	725.4	3,909.8
1977	504.9	235.5	576.0	375.5	444.1	274.8	358.4	412.7	747.4	3,929.2
1978	527.0	260.1	600.2	387.4	460.8	309.7	377.5	441.4	802.6	4,166.8
1979	542.5	248.8	624.1	396.3	464.5	334.2	394.3	462.0	828.0	4,294.6
1980	503.7	240.7	612.4	393.6	452.5	324.2	409.8	470.8	857.3	4,264.9
1981	520.7	244.9	628.8	422.8	442.8	330.2	427.9	479.9	893.2	4,391.2
1982	520.4	267.4	634.0	450.5	449.7	353.3	461.7	494.1	926.3	4,557.4
1983	541.2	262.4	646.1	473.3	455.9	349.7	486.5	497.1	966.2	4,678.3
1984	548.7	257.9	630.3	486.9	450.9	358.4	510.8	490.4	1,001.7	4,727.0

Source: The Labour Force, Australia (6203.0).

TABLE 5.3. PERSONS NOT IN THE LABOUR FORCE(a): FAMILY STATUS, JULY 1984

	Males	Females	Persons	Males	Females	Persons
	— '000 —			— per cent —		
<i>Member of a family</i>	1,028.2	2,562.8	3,591.0	22.0	54.0	38.1
Husband or wife	678.4	1,916.6	2,595.0	19.7	56.4	37.9
With dependent children present	86.1	968.9	1,055.1	4.6	52.7	28.4
Without dependent children present	592.3	947.7	1,540.0	38.0	60.7	49.4
Not-married family head	31.5	284.1	315.6	32.5	63.7	58.1
With dependent children present	8.9	163.1	172.2	22.5	59.5	54.9
Without dependent children present	22.6	120.8	143.4	39.4	70.3	62.5
Full-time student aged 15-20	225.1	220.8	445.9	74.0	70.8	72.4
Other child(b) of family head	61.9	48.9	110.8	8.1	10.6	9.1
Other relative	31.2	92.4	123.7	37.5	74.5	59.6
<i>Not a member of a family</i>	173.7	444.2	617.9	23.3	53.5	39.2
Living alone	130.0	392.6	522.6	34.1	71.9	56.4
Not living alone	43.7	51.6	95.3	12.0	18.1	14.7
Total	1,201.9	3,006.9	4,208.8	22.1	53.9	38.3

(a) Excludes persons in institutions. (b) Aged 15 and over.

Source: Labour Force Status and Other Characteristics of Families, July 1984 (6224.0).

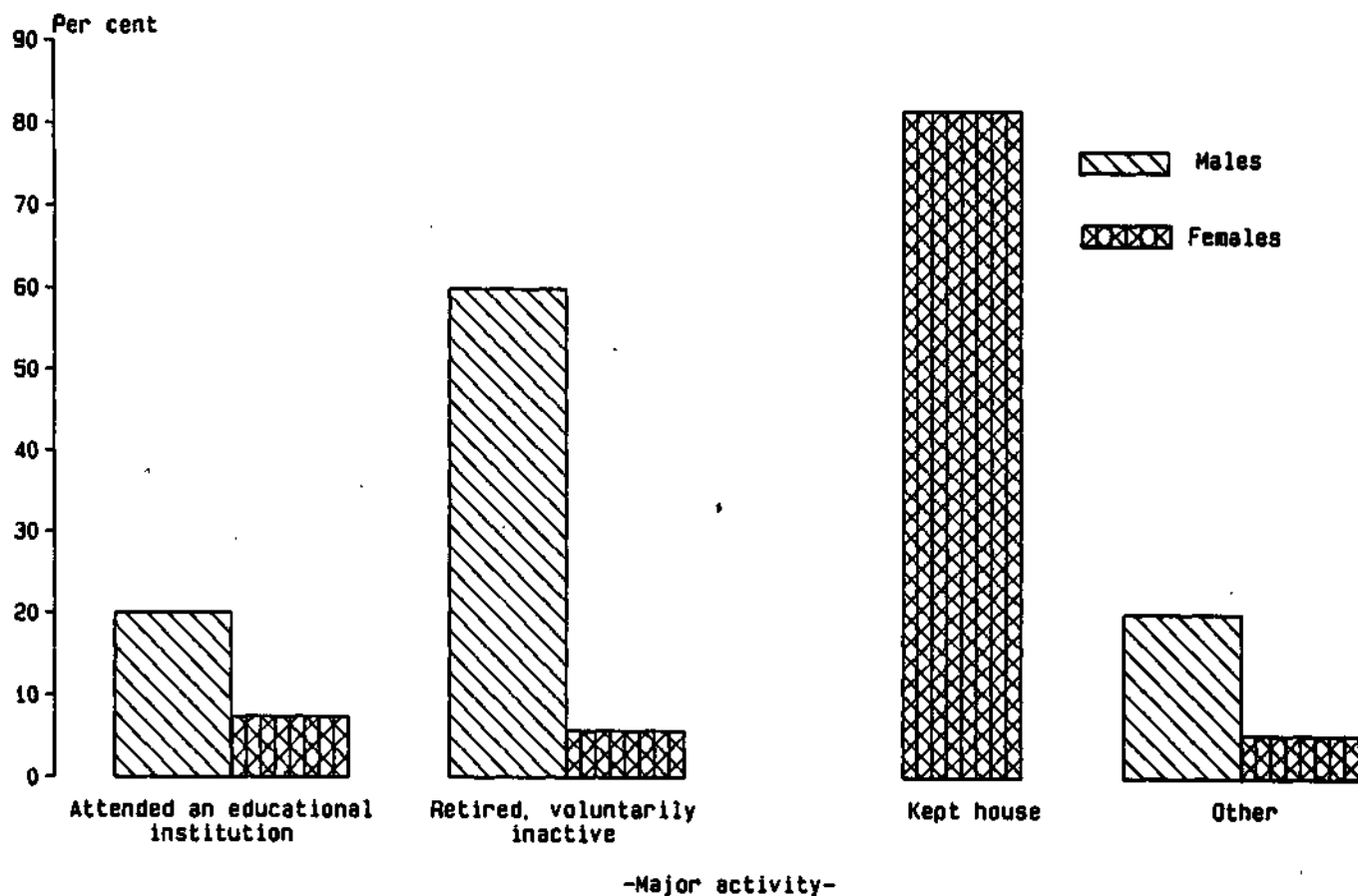
TABLE 5.4. PERSONS OUT OF THE LABOUR FORCE AT SOME TIME DURING THE YEAR(a): MAJOR ACTIVITY WHEN OUT OF THE LABOUR FORCE, 1979 TO 1984

Major activity when out of the labour force	Year ended February					
	1979	1980	1981	1982	1983	1984
NUMBER ('000)						
Kept house	2,663.2	2,593.2	2,591.1	2,658.9	2,869.5	2,953.9
Attended an educational institution	821.7	805.0	751.8	765.3	759.6	839.0
Ill or injured	200.2	219.9	169.6	166.0	230.7	236.3
Retired, voluntarily inactive, etc.	1,255.8	1,333.5	1,141.1	1,291.6	1,110.9	1,085.2
Permanently unable to work	65.5	61.3	69.4	69.5	69.0	65.5
On strike	78.5	85.3	7.0	21.3
Unpaid leave(b)	252.4	352.3
Other	57.1	68.5	62.4	60.3	166.2	168.3
Not asked(c)	613.5
Total	5,142.0	5,166.6	4,792.4	5,646.4	5,458.4	5,700.5
PROPORTION OF TOTAL (per cent)						
Kept house	51.8	50.2	54.1	47.1	52.6	51.8
Attended an educational institution	16.0	15.6	15.7	13.6	13.9	14.7
Ill or injured	3.9	4.3	3.5	2.9	4.2	4.1
Retired, voluntarily inactive, etc.	24.4	25.8	23.8	22.9	20.4	19.0
Permanently unable to work	1.3	1.2	1.4	1.2	1.3	1.1
On strike	1.5	1.7	0.1	0.4
Unpaid leave(b)	4.6	6.2
Other	..	1.3	1.3	1.1	3.0	3.0
Not asked(c)	10.9
Total	100.0	100.0	100.0	100.0	100.0	100.0

(a) For 1979 and 1980 refers to calendar year. For 1981 and 1982 refers to twelve month period beginning February. (b) Included under 'retired, voluntarily inactive, etc.' in 1979-1982. (c) Persons who had had their current job for a year or longer but had only worked for part of the period were not asked their activity when not working.

Source: Labour Force Experience, Australia (6206.0).

CHART 5.b. PERSONS OUT OF THE LABOUR FORCE : MAJOR ACTIVITY,
FEBRUARY 1984



Source: Labour Force Experience, Australia, During The Year Ending February 1984 (8206.0).

TABLE 5.5. PERSONS AGED 15 TO 64 NOT IN THE LABOUR FORCE(a): ATTENDANCE AT AN EDUCATIONAL INSTITUTION,
MAY 1981 TO MAY 1984
('000)

Institution attending	May 1981		May 1982		May 1983		May 1984	
	Males	Females	Males	Females	Males	Females	Males	Females
School	174.2	169.0	174.0	168.9	195.1	186.7	199.3	182.8
University	41.2	38.8	49.3	36.1	44.6	38.7	46.4	41.9
CAE	24.4	35.2	19.2	26.4	18.5	29.1	20.2	30.4
TAFE/Technical College	13.3	41.1	15.0	51.5	18.8	48.2	20.4	54.2
Other	*	23.1	6.0	24.6	5.0	25.5	6.9	26.6
Total	257.1	307.2	263.5	307.5	282.0	328.2	293.3	335.9
Not attending	352.9	1,947.7	372.7	1,981.7	413.8	2,000.0	416.5	2,009.9
Persons not in the labour force	610.0	2,254.9	636.2	2,289.2	695.9	2,328.2	709.7	2,345.8

(a) Excludes persons in institutions and persons permanently unable to work. Estimates may therefore differ from those shown in other tables and charts.

Source: Transition from Education to Work, Australia (6227.0).

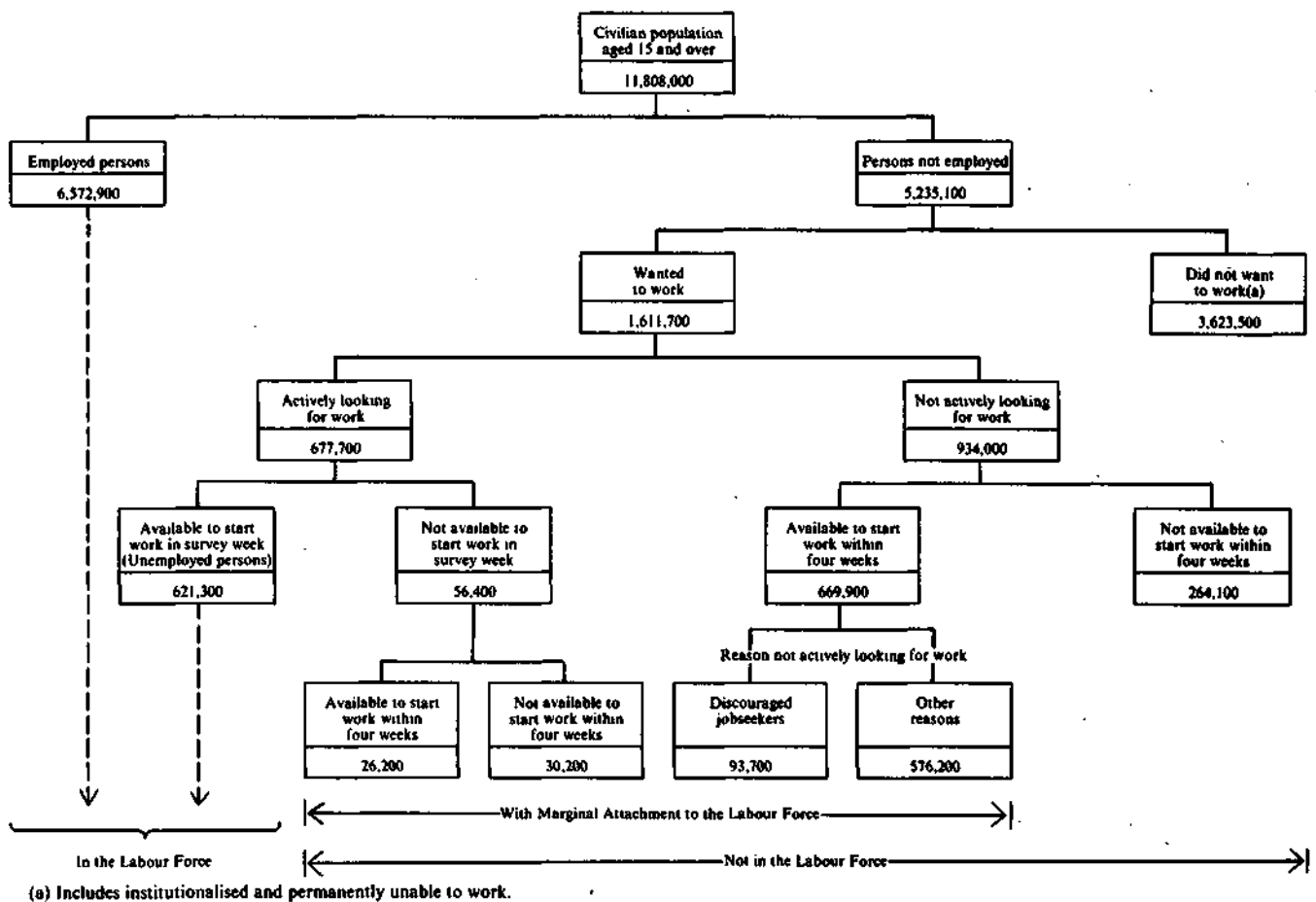
TABLE 5.6. PERSONS NOT IN THE LABOUR FORCE(a) : EDUCATIONAL ATTAINMENT AND AGE, FEBRUARY 1984

Educational attainment	Age group (years)						Total	
	15-19	20-24	25-34	35-44	45-54	55 and over	'000	per cent
	— '000—							
MALES								
With post-school qualifications	*	9.6	17.5	13.1	17.8	239.1	297.4	24.0
Degree or equivalent	*	5.1	5.8	*	*	35.8	49.0	4.0
Trade, technical level	4.6	*	11.7	11.8	16.6	199.5	244.3	19.7
Other	*	*	*	*	*	*	*	*
Without post-school qualifications(b)	39.3	35.6	27.8	28.1	44.3	579.2	754.2	60.9
Attended highest level of secondary school available	20.7	23.0	6.8	*	*	46.7	103.7	8.4
Did not attend highest level of secondary school available	18.6	12.5	20.5	24.1	40.3	526.1	642.0	51.9
Left at age (years)—								
18 or over	*	*	*	*	*	*	*	*
16 or 17	8.4	6.1	5.8	4.3	4.6	39.7	68.8	5.6
14 or 15	9.5	5.5	13.6	13.5	25.7	340.1	408.0	33.0
13 or under	*	*	*	5.7	10.0	144.1	161.8	13.1
Still at school	185.4	*	186.0	15.0
Total	225.0	45.7	45.3	41.2	62.1	818.3	1,237.5	100.0
FEMALES								
With post-school qualifications	5.1	39.5	191.9	125.9	78.1	192.2	632.7	20.1
Degree or equivalent	*	5.1	26.8	17.4	4.6	18.0	71.9	2.3
Trade, technical level	*	31.8	158.1	104.3	67.9	166.5	532.9	16.9
Other	*	*	7.1	*	5.5	7.7	27.9	0.9
Without post-school qualifications	66.9	137.3	385.5	322.7	311.3	1,126.8	2,350.5	74.7
Attended highest level of secondary school available	29.0	29.8	53.7	35.5	27.7	106.1	281.8	9.0
Did not attend highest level of secondary school available	37.5	106.1	330.1	284.7	280.3	1,004.9	2,043.6	64.9
Left at age (years)—								
18 or over	*	*	*	*	*	*	12.8	0.4
16 or 17	19.5	50.1	131.3	62.2	38.6	103.0	404.7	12.9
14 or 15	17.0	51.6	177.7	189.8	191.7	695.0	1,322.8	42.0
13 or under	*	*	16.7	30.3	49.2	204.2	303.2	9.6
Never attended school	*	*	*	*	*	15.8	25.1	0.8
Still at school	164.0	*	164.0	5.2
Total	235.9	176.9	577.4	448.6	389.4	1,319.0	3,147.1	100.0
PERSONS								
With post-school qualifications	5.3	49.2	209.5	139.0	95.9	431.3	930.1	21.2
Degree or equivalent	*	10.2	32.6	18.7	5.6	53.8	120.9	2.8
Trade, technical level	4.6	36.1	169.8	116.1	84.5	366.1	777.2	17.7
Other	*	*	7.1	*	5.7	11.5	32.0	0.7
Without post-school qualifications	106.2	172.9	413.2	350.7	355.7	1,706.0	3,104.7	70.8
Attended highest level of secondary school available	49.7	52.8	60.5	38.4	31.3	152.8	385.5	8.8
Did not attend highest level of secondary school available	56.1	118.6	350.6	308.8	320.7	1,530.9	2,685.6	61.2
Left at age (years)—								
18 or over	*	*	7.5	*	*	4.8	16.1	0.4
16 or 17	27.9	56.2	137.1	66.5	43.2	142.7	473.5	10.8
14 or 15	26.5	57.2	191.3	203.3	217.5	1,035.1	1,730.8	39.5
13 or under	*	*	17.8	36.0	59.2	348.3	465.1	10.6
Never attended school	*	*	5.8	*	*	22.2	33.6	0.8
Still at school	349.4	*	349.9	8.0
Total	460.9	222.6	622.7	489.7	451.5	2,137.3	4,384.7	100.0

(a) Excludes persons in institutions. Estimates may therefore differ from those shown in other tables and charts. (b) Includes persons who never attended school.

Source: Labour Force Status and Educational Attainment, Australia, February 1984 (6235.0).

CHART 5.c. RELATIONSHIP OF PERSONS marginally attached to the LABOUR FORCE TO PERSONS IN OR NOT IN THE LABOUR FORCE, SEPTEMBER 1984



Source: *Persons Not in the Labour Force, Australia, September 1984* (6220.0).

TABLE 5.7. PERSONS NOT IN THE LABOUR FORCE WHO WANTED TO WORK BUT WERE NOT ACTIVELY LOOKING FOR WORK AND WERE NOT AVAILABLE TO START WORK WITHIN FOUR WEEKS: REASON NOT AVAILABLE TO START AND INTENTION TO LOOK FOR WORK IN THE NEXT TWELVE MONTHS, SEPTEMBER 1984
(^{' 000})

Reason not available to start within four weeks	Intention to look for work in the next twelve months					Total		
	Intended to look	Might look	Would not look	Did not know	Not asked(a)	Males	Females	Persons
Personal reasons	59.9	23.7	46.0	5.8	5.8	63.1	78.0	141.1
Own ill health, etc.	17.0	13.4	24.2	3.2	4.2	24.5	37.5	62.0
Studying	38.7	8.5	18.3	*	*	36.9	31.5	68.4
At school	35.0	7.7	17.2	*	*	33.3	29.0	62.3
Other educational institution	3.7	*	*	*	*	3.6	*	6.1
Moved house/holidays	4.2	*	3.5	*	*	*	8.9	10.7
Family reasons	18.1	16.9	58.4	3.2	8.1	*	102.9	104.6
Ill health of other than self	*	*	6.1	*	*	*	9.9	10.7
Unable to find suitable child care	*	*	7.9	*	*	*	12.9	12.9
Children too young/preferred to look after children	13.6	12.4	44.4	*	8.0	*	80.0	81.0
Other reasons	4.2	*	10.1	*	*	*	15.6	18.3
Total								
Males	29.8	12.9	20.0	*	*	67.6
Females	52.4	29.9	94.5	6.9	12.6	..	196.4	..
Persons	82.2	42.8	114.5	9.6	15.0	264.1

Source: *Persons Not in the Labour Force, Australia, September 1984* (6220.0).

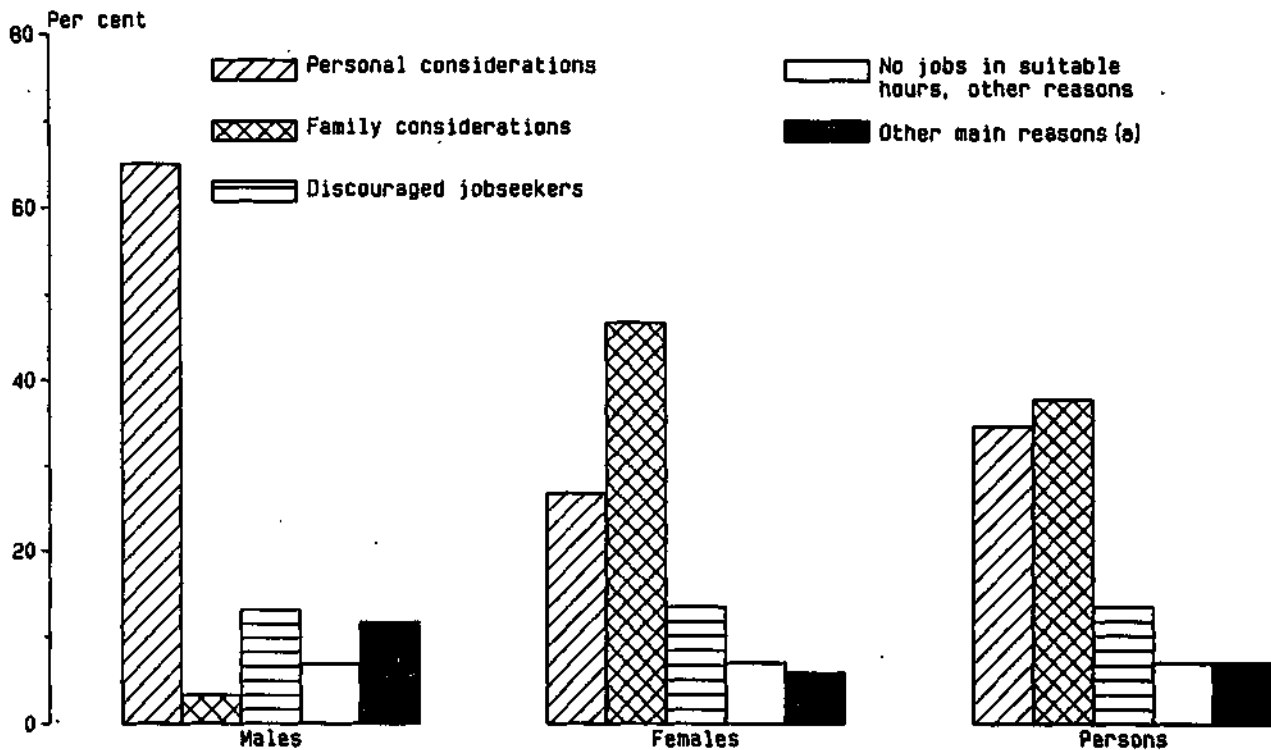
**TABLE 5.8. PERSONS NOT IN THE LABOUR FORCE WITH MARGINAL ATTACHMENT TO THE LABOUR FORCE:
SUMMARY OF CHARACTERISTICS, SEPTEMBER 1984**
('000)

	<i>Discouraged jobseekers</i>			<i>All persons who wanted to work and were available to start work within four weeks</i>			<i>All persons with marginal attachment to the labour force</i>		
	Males	Females	Persons	Males	Females	Persons	Males	Females	Persons
Total	19.0	74.7	93.7	144.6	551.5	696.1	163.0	563.3	726.3
Age group (years)—									
15-19	*	5.7	8.4	52.8	58.7	111.5	65.5	65.8	131.3
20-24	*	*	5.1	14.0	58.7	72.8	16.4	61.2	77.6
25-34	*	12.9	13.8	14.3	187.6	201.9	14.7	188.7	203.4
35-44	*	17.8	19.1	14.9	129.0	143.9	16.5	129.9	146.4
45-54	*	18.0	19.9	11.6	71.8	83.4	12.2	72.0	84.2
55-64	4.4	12.3	16.7	22.6	36.8	59.4	23.1	36.8	59.9
65 and over	5.5	5.2	10.7	14.3	8.9	23.2	14.6	8.9	23.4
Family status—									
Member of a family	14.1	62.8	76.9	116.2	495.9	612.1	130.6	505.8	636.4
Husband or wife	8.9	48.1	57.0	48.6	360.6	409.2	51.3	362.4	413.7
With children aged 0-14 present	*	24.8	25.5	16.7	271.8	288.5	18.7	273.3	292.0
Without children aged 0-14 present	8.2	23.3	31.5	31.9	88.8	120.7	32.6	89.1	121.7
Not-married family head	*	7.9	7.9	5.8	78.0	83.8	5.8	78.7	84.5
With children aged 0-14 present	*	4.6	4.6	3.4	67.1	70.5	3.4	67.8	71.2
Without children aged 0-14 present	*	3.2	3.2	*	10.9	13.3	*	10.9	13.3
Child of family head	3.4	5.7	9.1	57.9	53.4	111.4	69.5	60.9	130.4
Other relative of family head	*	*	3.0	3.9	3.9	7.8	4.0	3.9	7.9
Not a member of a family	3.0	6.9	9.9	18.2	22.6	40.8	19.3	23.7	43.0
Living alone	*	6.6	8.6	8.8	17.4	26.2	8.8	17.6	26.4
Not living alone	*	*	*	9.4	5.2	14.6	10.5	6.1	16.6
Not family coded	*	4.9	6.8	10.2	33.0	43.2	13.2	33.8	46.9
Work preference—									
Preferred to work full-time	9.6	13.6	23.2	69.0	85.7	154.6	83.4	93.5	176.9
Preferred to work part-time	8.2	57.9	66.1	70.2	451.7	522.0	74.2	455.1	529.2
No preference	*	3.2	4.5	5.4	14.1	19.5	5.5	14.8	20.2
Whether looked for work in the last 12 months(a)—									
Had not looked for work	10.7	48.9	59.6	92.5	426.0	518.6	92.5	426.0	518.6
Had looked for work	8.3	25.8	34.1	52.1	125.5	177.5	70.5	137.3	207.8
Less than 5 weeks ago	*	6.1	8.0	21.2	44.1	65.3	39.6	55.9	95.5
5 and less than 8 weeks ago	3.0	7.6	10.6	16.1	30.6	46.7	16.1	30.6	46.7
8 and less than 13 weeks ago	*	4.9	6.0	5.4	20.3	25.7	5.4	20.3	25.7
13 and less than 52 weeks ago	*	7.2	9.4	9.4	30.5	39.9	9.4	30.5	39.9
Time since last job—									
Had never had a job	*	8.6	11.1	41.4	59.3	100.8	51.8	64.9	116.7
Had had a job	16.6	66.0	82.6	103.2	492.2	595.3	111.3	498.4	609.7
Under 12 months	4.3	7.9	12.2	46.1	96.5	142.7	51.5	101.2	152.7
Under 6 months	*	4.4	6.8	27.8	56.4	84.2	29.1	58.3	87.4
6 and under 12 months	*	3.5	5.4	18.4	40.1	58.5	22.4	42.9	65.3
1 and under 3 years	4.0	13.4	17.5	27.3	105.3	132.6	29.5	105.8	135.3
3 and under 10 years	6.7	23.4	30.1	25.5	181.8	207.3	26.1	182.5	208.7
10 years or more	*	21.3	22.8	4.2	108.6	112.8	4.2	108.8	113.0
Reason for leaving last job—									
Retrenched/made redundant/lost job	5.6	12.6	18.2	22.2	61.4	83.6	23.7	61.4	85.1
Seasonal or temporary job	*	6.8	8.3	9.5	48.1	57.7	10.1	49.3	59.4
Returned to studies	*	*	*	8.1	7.2	15.3	11.6	10.1	21.7
Retired/did not want to work any longer	4.8	3.7	8.5	18.1	22.6	40.7	18.1	22.6	40.7
Unsatisfactory work arrangements	*	*	3.5	6.4	22.3	28.7	6.7	22.4	29.1
Own ill health or injury	*	5.9	6.8	20.5	30.4	50.9	21.8	30.5	52.3
To get married	*	5.8	5.8	*	40.6	40.6	*	40.6	40.6
Pregnancy/to have children	*	11.1	11.1	*	147.3	147.4	*	148.2	148.3
To look after family, house or someone else	*	5.0	5.0	*	37.1	39.1	*	37.2	39.4
Travel, moved house, spouse transferred	*	9.7	12.0	8.7	53.8	62.5	8.9	54.2	63.1
Other reasons	*	*	3.5	4.7	14.5	19.3	5.3	15.0	20.3
Never had a job	*	8.6	11.1	41.4	59.3	100.8	51.8	64.9	116.7
Not asked(b)	*	*	*	*	6.8	9.5	*	6.8	9.5

(a) Persons who had left a job in the last twelve months were only asked whether they had looked for work since that job. (b) Persons who had a job but, up to the end of survey week, had been away from work without pay for four weeks or longer and had not been actively looking for work.

Source: Persons Not in the Labour Force, Australia, September 1984 (6220.0).

CHART 5.d. PERSONS AGED 15-64 NOT IN THE LABOUR FORCE WHO WANTED TO WORK AND WERE AVAILABLE TO START WORK WITHIN FOUR WEEKS : MAIN REASON FOR NOT ACTIVELY LOOKING FOR WORK, SEPTEMBER 1984



(a) includes 'Had a job to go to', 'Did not know', 'Were actively looking for work', and 'Not asked'.

Source: Persons Not in the Labour Force, Australia, September 1984 (6220.0).

TABLE 5.9. PERSONS NOT IN THE LABOUR FORCE WHO WANTED TO WORK AND WERE AVAILABLE TO START WORK WITHIN FOUR WEEKS: MAIN REASON FOR NOT ACTIVELY LOOKING FOR WORK, SEPTEMBER 1984

Main reason for not actively looking for work	Males		Females		Persons	
	'000	per cent	'000	per cent	'000	per cent
Had a job to go to	*	*	6.1	1.1	8.8	1.3
Personal reasons	94.0	65.0	147.8	26.8	241.8	34.7
Own ill health, disability, pregnancy	25.8	17.8	34.8	6.3	60.6	8.7
Attending an educational institution	47.3	32.7	46.1	8.4	93.4	13.4
Had no need to work	8.6	5.9	32.9	6.0	41.5	6.0
Give others a chance	*	*	8.2	1.5	9.3	1.3
Welfare payments/pension may be affected	3.9	2.7	13.5	2.5	17.4	2.5
Moved house/holidays	7.3	5.0	12.3	2.2	19.6	2.8
Family reasons	4.8	3.3	258.3	46.8	263.1	37.8
Ill health of other than self	*	*	14.1	2.6	15.2	2.2
Unable to find suitable childcare	*	*	75.5	13.7	76.3	11.0
Children too young/preferred to look after children	*	*	131.6	23.9	132.9	19.1
Other family considerations	*	*	37.1	6.7	38.7	5.6
Discouraged jobseekers	19.0	13.1	74.7	13.5	93.7	13.5
Considered too young or too old by employers	7.7	5.3	19.3	3.5	26.9	3.9
Difficulties with language or ethnic background	*	*	4.4	0.8	5.7	0.8
Lacked necessary schooling, training, skills or experience	*	*	7.9	1.4	8.9	1.3
No jobs in locality or line of work	5.6	3.9	23.4	4.2	29.0	4.2
No jobs at all	3.5	2.4	19.7	3.6	23.2	3.3
No jobs in suitable hours	*	*	17.4	3.2	19.3	2.8
Other reasons	8.0	5.5	21.4	3.9	29.5	4.2
Did not know	*	*	3.6	0.7	4.2	0.6
Were actively looking for work	10.8	7.5	15.4	2.8	26.2	3.8
Not asked(a)	*	*	6.8	1.2	9.5	1.4
Total	144.6	100.0	551.5	100.0	696.1	100.0

(a) Persons who had a job but, up to the end of survey week, had been away from work without pay for four weeks or longer and had not been actively looking for work.

Source: Persons Not in the Labour Force, Australia, September 1984 (6220.0).