

CHAPTER 2

THE LABOUR FORCE

Fundamental to the measurement of employment and unemployment is the concept of the labour force. The labour force is defined broadly as those persons who during a particular week are either employed or unemployed. The labour force represents the total supply of labour available to the labour market during a given week.

This chapter presents some summary statistics on the civilian labour force. The most important labour force measure is the participation rate, which represents the proportion of the working age population (defined to be those aged 15 and over) who are in the labour force. Analysis of the participation rates provides the basis for monitoring changes in the size and composition of labour supply, particularly in terms of their age, sex and marital status. Other characteristics of the labour force such as its birthplace, educational attainment and family characteristics are also of interest.

The principal source for statistics on the civilian labour force is the ABS monthly labour force survey and the supplementary surveys attached to it. The labour force survey collects information on the labour force status of individuals (i.e. whether they are employed, unemployed or not in the labour force) together with a range of demographic and other characteristics. It has provided the basis for an analysis of underemployment and labour underutilisation, a topic included in Chapter 3. The supplementary surveys cover a range of topics including the Survey of Labour Force Experience, conducted in February in each year, which examines the movements into and out of the labour force over twelve months.

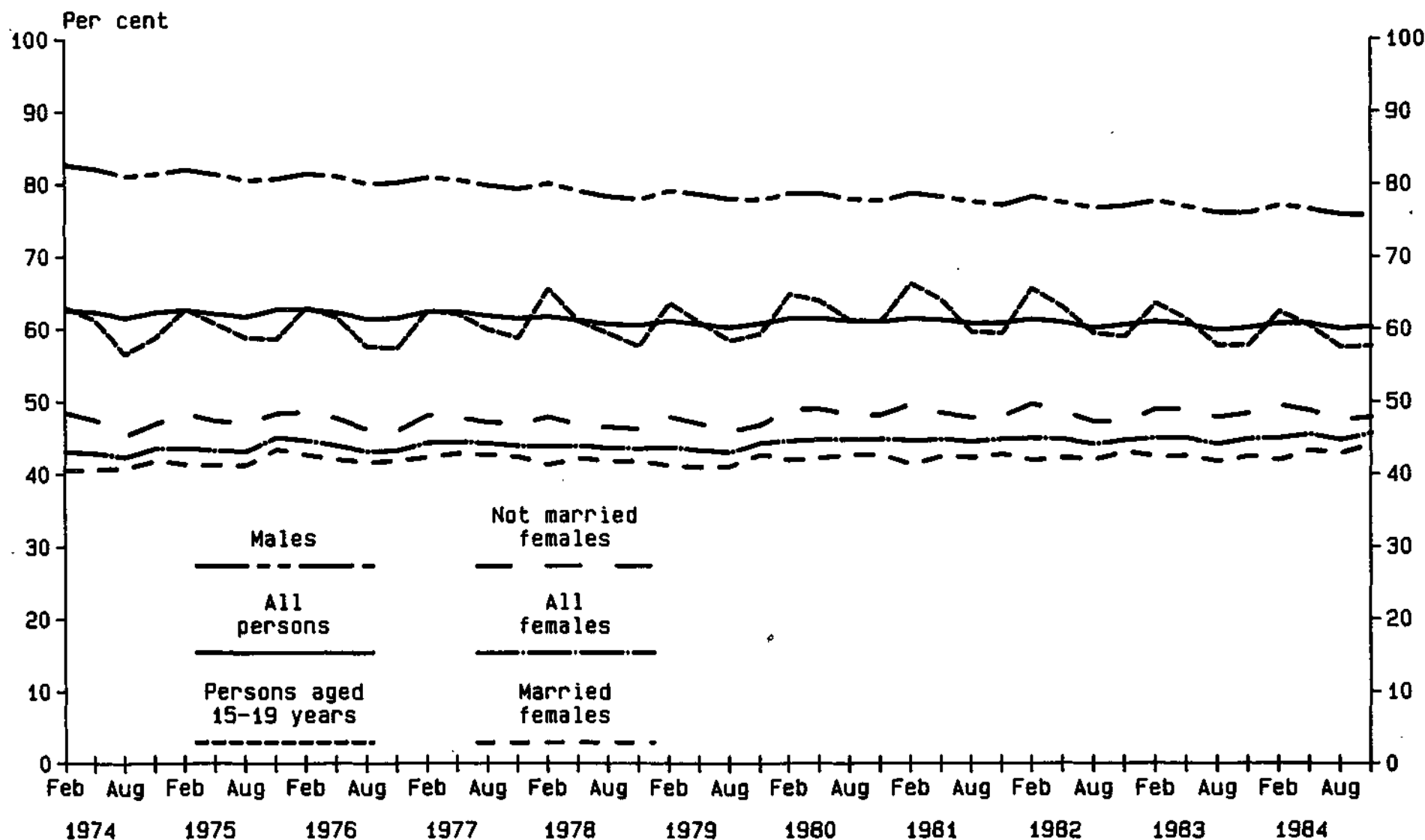
Persons employed in the permanent Defence Forces, which totalled 66,969 males and 4,673 females at the end of June 1984, are excluded from the Labour Force Survey.

TABLE 2.1. LABOUR FORCE: SOURCES OF GROWTH, AUGUST 1974 TO AUGUST 1984
(Per cent)

Year ending August	Males			Females			Persons		
	Percentage change in labour force	Proportion of change due to		Percentage change in labour force	Proportion of change due to		Percentage change in labour force	Proportion of change due to	
		Population growth	Labour force participation		Population growth	Labour force participation		Population growth	Labour force participation
1974	0.6	2.0	-1.4	4.2	2.2	2.0	1.8	2.1	-0.3
1975	1.1	1.7	-0.6	3.8	1.8	2.0	2.1	1.7	0.4
1976	0.8	1.6	-0.8	1.7	1.7	0.0	1.2	1.7	-0.5
1977	1.6	1.8	-0.2	4.6	1.9	2.7	2.7	1.8	0.9
1978	-0.4	2.5	-2.1	1.4	3.0	-1.6	0.8	2.8	-2.0
1979	1.1	1.6	-0.5	0.3	1.8	-1.4	0.8	1.7	-0.4
1980	1.8	1.7	0.1	6.2	1.8	4.3	3.4	1.8	1.6
1981	1.6	2.0	-0.4	1.3	2.1	-0.8	1.5	2.1	-0.6
1982	0.9	2.1	-1.2	1.1	2.1	-0.9	1.0	2.1	-1.1
1983	0.9	1.8	-0.9	2.0	1.8	0.1	1.3	1.8	-0.5
1984	1.4	1.6	-0.2	3.0	1.6	1.4	2.0	1.6	-0.4

Source: *The Labour Force, Australia* (6203.0).

CHART 2.a. CIVILIAN POPULATION AGED 15 AND OVER : LABOUR FORCE
PARTICIPATION RATES, 1974 TO 1984



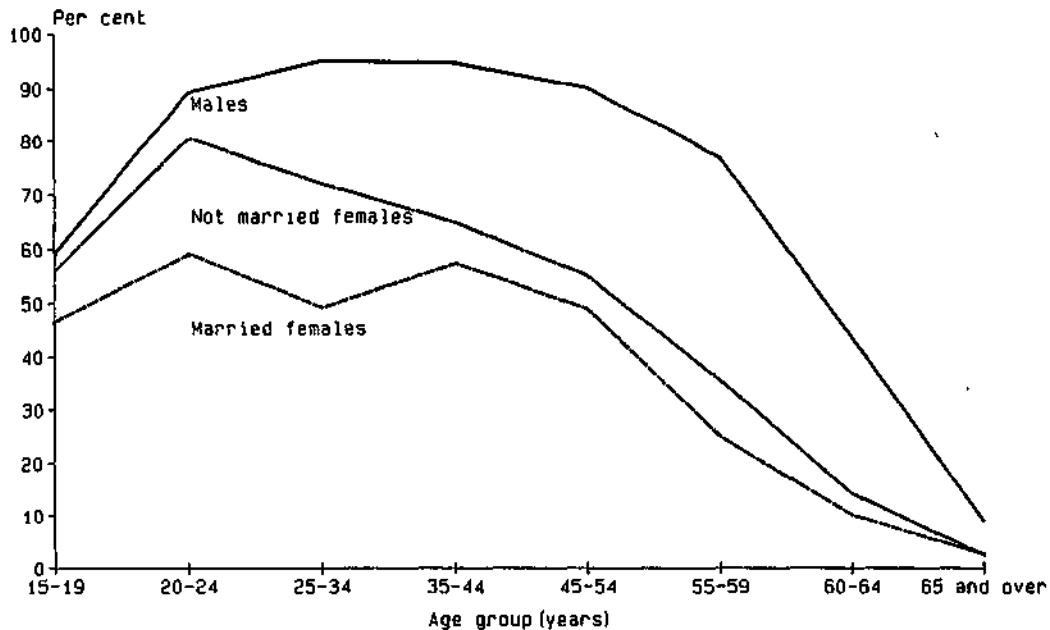
Source: The Labour Force, Australia (6203.0).

TABLE 2.2. LABOUR FORCE PARTICIPATION RATES BY AGE, 1974 TO 1984
(Per cent)

August	Age group (years)								Total
	15-19	20-24	25-34	35-44	45-54	55-59	60-64	65 and over	
MALES									
1974	58.3	90.0	97.0	97.2	94.2	87.6	72.4	18.4	81.0
1975	60.0	90.1	96.8	96.8	93.9	87.8	68.6	16.7	80.5
1976	60.2	90.8	96.9	96.8	94.0	86.9	64.0	14.3	80.0
1977	62.1	91.2	96.9	97.0	93.2	86.3	62.2	13.7	79.8
1978	61.0	89.6	95.9	95.6	91.6	81.9	59.7	12.0	78.2
1979	61.4	90.2	95.8	95.6	91.2	82.0	53.5	11.5	77.8
1980	62.8	90.5	95.5	95.9	91.4	83.3	50.2	11.1	77.8
1981	61.8	91.3	95.3	95.2	91.3	81.1	51.2	10.6	77.5
1982	62.4	89.3	94.9	95.1	90.0	79.1	47.7	9.2	76.6
1983	58.2	89.6	95.4	95.0	90.4	78.2	42.8	8.6	75.9
1984	59.1	89.4	95.1	94.7	90.1	76.8	43.5	9.0	75.7
FEMALES									
1974	54.5	63.8	47.6	53.1	45.8	31.4	16.1	4.0	42.2
1975	57.3	65.3	48.4	54.4	46.3	31.2	15.6	3.9	43.0
1976	54.7	66.4	48.2	54.7	48.8	31.5	15.1	3.5	43.0
1977	57.6	68.7	50.4	55.9	48.3	31.6	15.2	3.5	44.2
1978	57.5	66.9	51.0	56.7	47.5	30.2	13.8	2.8	43.5
1979	55.0	69.2	50.3	57.1	46.8	26.2	13.2	2.4	42.9
1980	59.2	71.1	52.8	58.7	47.6	29.1	13.5	2.9	44.7
1981	57.1	70.7	52.9	58.1	49.0	29.8	12.0	2.6	44.4
1982	56.1	70.0	53.6	58.0	49.5	26.0	9.1	2.5	44.0
1983	57.0	70.8	52.8	58.0	48.5	28.3	12.1	2.1	44.0
1984	55.7	71.7	54.9	58.7	50.1	27.6	11.5	2.5	44.6
PERSONS									
1974	56.4	76.8	72.7	75.6	70.4	59.3	43.6	10.2	61.4
1975	58.7	77.6	72.9	76.0	70.6	59.3	41.4	9.4	61.6
1976	57.5	78.5	72.7	76.1	71.8	59.0	38.8	8.2	61.3
1977	59.9	79.8	73.7	76.8	71.2	58.8	38.0	7.9	61.8
1978	59.3	78.2	73.6	76.5	70.0	55.8	35.8	6.7	60.6
1979	58.3	79.7	73.1	76.7	69.5	53.8	32.5	6.2	60.1
1980	61.1	80.8	74.2	77.6	70.0	56.0	31.0	6.4	61.0
1981	59.5	81.0	74.2	76.9	70.6	55.4	30.7	5.9	60.7
1982	59.3	79.6	74.3	76.9	70.2	52.5	27.9	5.3	60.0
1983	57.6	80.2	74.1	76.8	69.9	53.4	26.9	4.8	59.7
1984	57.4	80.6	75.0	76.9	70.5	52.4	27.0	5.2	59.9

Source: The Labour Force, Australia (6203.0).

**CHART 2.b. CIVILIAN POPULATION AGED 15 AND OVER : AGE,
LABOUR FORCE PARTICIPATION RATES, AUGUST 1984**



Source: The Labour Force, Australia (6203.0).

CHART 2.c. LABOUR FORCE STATUS OF THE CIVILIAN POPULATION
AGED 15 AND OVER : AGE GROUPS AND SEX, AUGUST 1974 AND AUGUST 1984

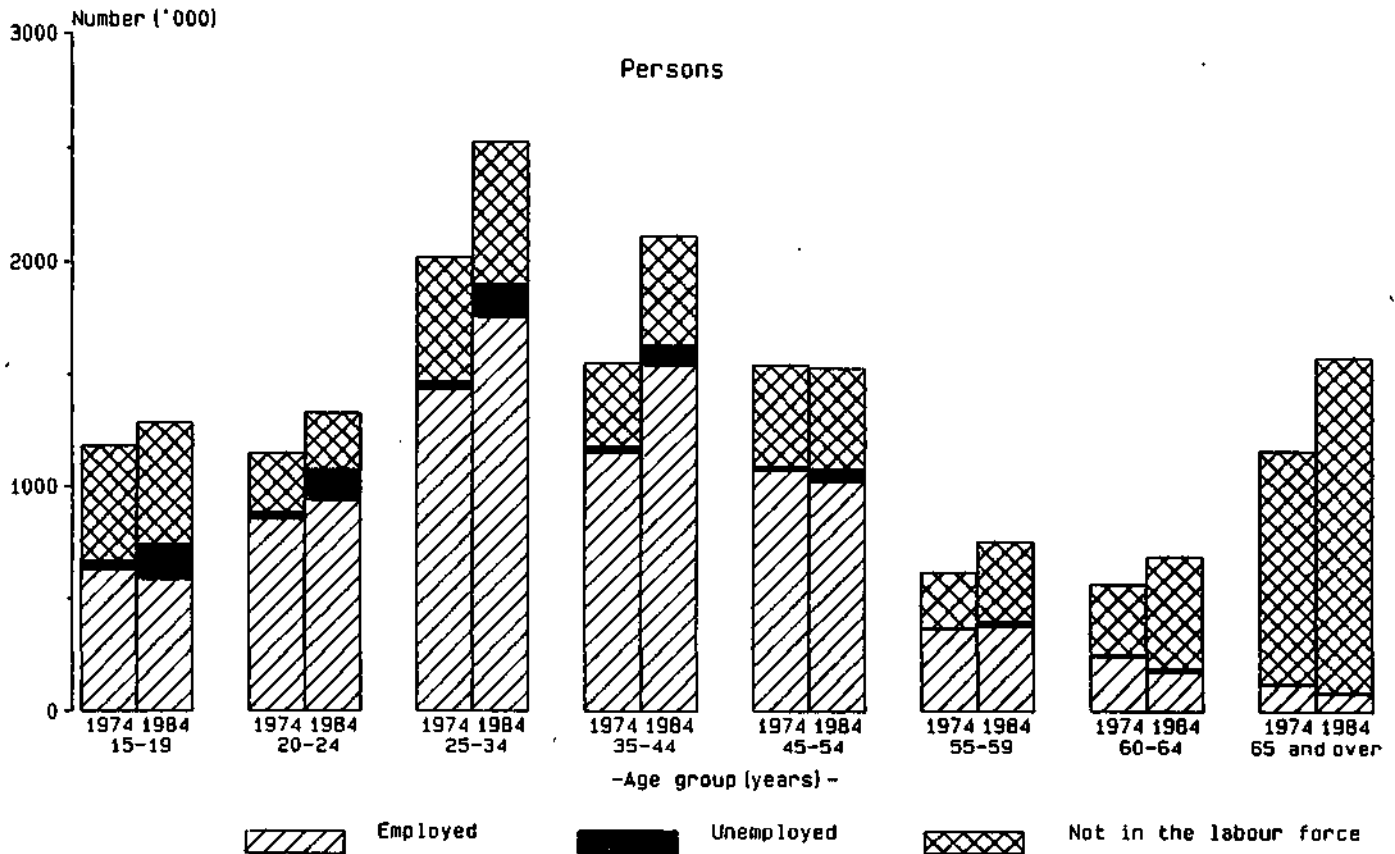


TABLE 2.3. CIVILIAN POPULATION AGED 15 AND OVER: LABOUR FORCE STATUS, AUGUST 1974 TO AUGUST 1984

August	Unemployed									
	Employed		Looking for full-time work		Looking for part-time work		Labour force		Civilian population aged 15 and over	
	Full-time workers	Total	work	work	work	Total	force	force	Unemployment rate	Participation rate
— '000 —										
— per cent —										
MALES										
1974	3,710.9	3,847.1	60.0	7.9	67.9	3,914.9	920.5	4,835.4	1.7	81.0
1975	3,668.4	3,820.6	122.5	16.3	138.8	3,959.4	956.6	4,916.0	3.5	80.5
1976	3,665.6	3,836.3	142.7	13.9	156.6	3,992.9	1,000.1	4,993.0	3.9	80.0
1977	3,682.6	3,866.8	168.5	21.6	190.1	4,056.9	1,024.9	5,081.8	4.7	79.8
1978	3,642.5	3,850.9	207.9	14.3	222.2	4,073.1	1,137.7	5,210.8	5.5	78.2
1979	3,715.9	3,921.2	184.0	13.5	197.5	4,118.7	1,177.6	5,296.3	4.8	77.8
1980	3,773.8	3,982.8	193.9	15.7	209.6	4,192.4	1,193.2	5,385.6	5.0	77.9
1981	3,835.6	4,057.9	187.8	12.7	200.5	4,258.4	1,236.6	5,494.9	4.7	77.5
1982	3,782.5	4,024.3	250.4	21.3	271.7	4,296.0	1,314.6	5,610.6	6.3	76.6
1983	3,663.4	3,903.6	409.5	20.2	429.7	4,333.3	1,379.2	5,712.5	9.9	75.9
1984	3,767.3	4,012.4	359.0	22.5	381.5	4,393.9	1,411.5	5,805.4	8.7	75.7
FEMALES										
1974	1,416.9	2,008.1	45.8	27.2	73.1	2,081.2	2,851.8	4,933.0	3.5	42.2
1975	1,378.5	2,020.8	93.0	46.6	139.7	2,160.3	2,859.6	5,019.9	6.5	43.0
1976	1,371.3	2,061.5	94.1	42.0	136.1	2,197.6	2,909.8	5,107.4	6.2	43.0
1977	1,411.9	2,128.6	114.8	54.4	169.2	2,297.8	2,904.3	5,202.1	7.4	44.2
1978	1,402.9	2,154.4	126.5	49.6	176.1	2,330.5	3,029.1	5,359.7	7.6	43.5
1979	1,397.2	2,157.4	131.8	48.1	179.9	2,337.4	3,117.0	5,454.4	7.7	42.9
1980	1,477.3	2,298.5	140.7	44.2	184.9	2,483.4	3,071.7	5,555.1	7.4	44.7
1981	1,501.5	2,335.8	135.9	44.2	180.1	2,515.9	3,154.6	5,670.5	7.2	44.4
1982	1,503.4	2,355.0	137.2	52.5	189.7	2,544.7	3,424.8	5,969.5	7.5	44.0
1983	1,486.9	2,337.4	197.9	59.3	257.1	2,594.6	3,299.1	5,893.7	9.9	44.0
1984	1,547.5	2,449.9	165.1	57.9	223.1	2,673.0	3,315.5	5,988.5	8.3	44.6
PERSONS										
1974	5,127.8	5,855.2	105.8	35.1	140.9	5,996.1	3,772.3	9,768.4	2.4	61.4
1975	5,046.8	5,841.3	215.5	62.9	278.4	6,119.7	3,816.2	9,935.9	4.6	61.6
1976	5,036.9	5,897.8	236.8	55.9	292.7	6,190.5	3,909.8	10,100.4	4.7	61.3
1977	5,049.6	5,995.4	283.3	76.0	359.3	6,354.7	3,929.2	10,283.9	5.7	61.8
1978	5,045.3	6,005.4	334.4	63.9	398.3	6,403.7	4,166.8	10,570.5	6.2	60.6
1979	5,113.1	6,078.5	315.8	61.7	377.5	6,456.0	4,294.6	10,750.7	5.9	60.1
1980	5,251.1	6,281.4	334.6	59.9	394.5	6,675.9	4,264.9	10,940.7	5.9	61.0
1981	5,337.1	6,393.7	323.7	56.9	380.6	6,774.3	4,391.2	11,165.5	5.6	60.7
1982	5,285.9	6,379.3	387.6	73.8	461.4	6,840.7	4,557.4	11,398.1	6.7	60.0
1983	5,150.3	6,241.1	607.4	79.5	686.8	6,927.9	4,678.3	11,606.2	9.9	59.7
1984	5,314.8	6,462.3	524.2	80.5	604.6	7,066.9	4,727.0	11,793.9	8.6	59.9

Source: The Labour Force, Australia (6203.0).

TABLE 2.4 LABOUR FORCE STATUS OF PERSONS AGED 15-19 YEARS, 1978 TO 1984
(000)

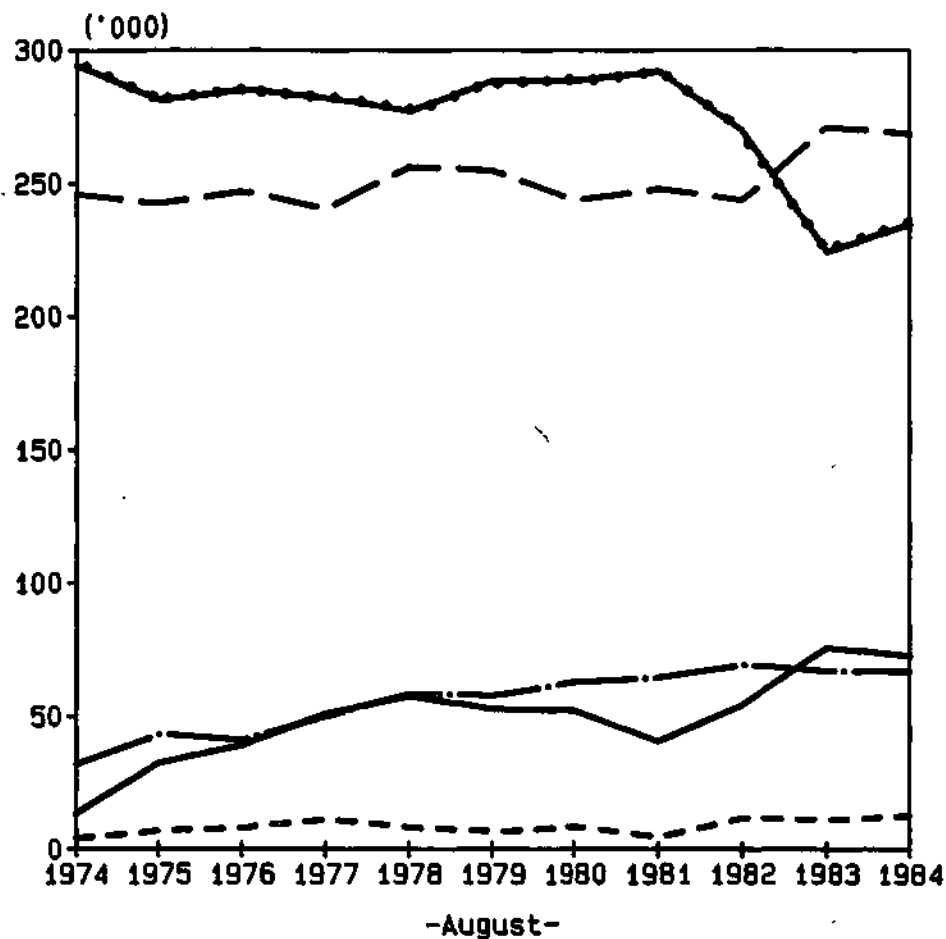
August	Employed		Unemployed (a)		Not in the labour Force
	Full-time	Part-time	Full-time	Part-time	
MALES					
1978	277.1	58.5	57.6	8.1	256.2
1979	288.5	57.6	52.6	6.6	254.6
1980	288.6	62.9	52.0	8.5	243.6
1981	292.1	64.6	40.4	4.5	248.0
1982	269.7	69.3	54.3	11.7	243.6
1983	224.3	66.8	75.8	10.9	271.0
1984	234.8	66.7	72.6	12.8	268.2
FEMALES					
1978	231.7	71.6	50.3	12.9	270.8
1979	209.0	71.4	61.3	10.6	288.0
1980	224.3	82.8	59.7	11.2	260.1
1981	218.5	82.5	51.4	10.4	272.6
1982	203.8	89.9	49.9	10.4	276.8
1983	186.6	92.4	64.6	15.1	270.2
1984	183.3	99.4	56.8	12.7	280.5
PERSONS					
1978	508.8	130.1	107.9	21.0	527.0
1979	497.5	128.9	113.8	17.2	542.5
1980	512.9	145.7	111.7	19.7	503.7
1981	510.6	147.1	91.7	14.8	520.7
1982	473.5	159.2	104.2	22.0	520.4
1983	410.9	159.2	140.4	26.0	541.2
1984	418.1	166.1	129.4	25.5	548.7

(a) Unemployed and looking for full-time or part-time work.

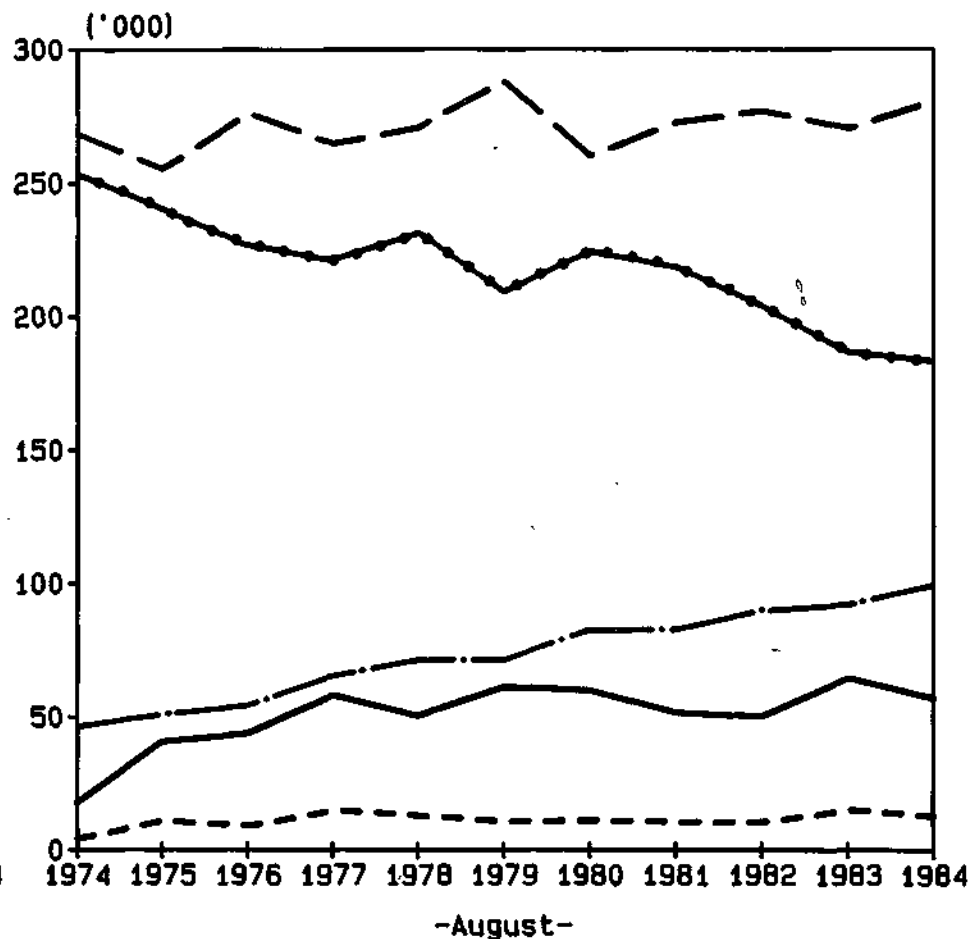
Source: *The Labour Force, Australia* (6203.0)

CHART 2.d. LABOUR FORCE STATUS OF PERSONS AGED 15 TO 19 YEARS,
1974 TO 1984

MALES



FEMALES



—•— Employed
full-time

— Unemployed looking
for full-time work

— — — Not in the
labour force

— . — Employed
part-time

- - - Unemployed looking
for part-time work

Source: The Labour Force, Australia (6203.0).

TABLE 2.5. CIVILIAN POPULATION AGED 15 AND OVER: LABOUR FORCE STATUS, STATES AND TERRITORIES, AUGUST 1984

State or Territory	Employed		Unemployed			Labour force	Not in labour force	Civilian population aged 15 and over	Unemployment rate	Participation rate
	Full-time workers	Total	Looking for full-time work	Looking for part-time work	Total					
	— '000—									
MALES										
New South Wales	1,298.5	1,386.6	137.1	7.3	144.4	1,531.0	495.2	2,026.2	9.4	75.6
Victoria	1,004.1	1,069.9	68.8	6.3	75.2	1,145.0	377.3	1,522.4	6.6	75.2
Queensland	599.5	636.6	67.2	4.8	72.0	708.6	221.4	930.0	10.2	76.2
South Australia	324.9	345.1	33.7	2.0	35.6	380.7	130.3	511.0	9.4	74.5
Western Australia	346.3	369.5	35.1	*	35.9	405.4	116.6	522.0	8.8	77.7
Tasmania	102.3	107.1	13.2	*	13.8	120.9	40.7	161.6	11.4	74.8
Northern Territory	31.3	33.3	2.2	*	2.4	35.8	14.1	49.8	6.8	71.8
Australian Capital Territory	60.3	64.3	1.7	*	2.2	66.4	15.8	82.2	3.3	80.8
Australia	3,767.3	4,012.4	359.0	22.5	381.5	4,393.9	1,411.5	5,805.4	8.7	75.7
FEMALES										
New South Wales	561.9	861.5	54.7	20.3	74.9	936.5	1,162.6	2,099.1	8.0	44.6
Victoria	416.4	653.1	39.5	15.2	54.8	707.9	879.5	1,587.4	7.7	44.6
Queensland	234.3	369.4	27.4	9.0	36.4	405.8	541.4	947.2	9.0	42.8
South Australia	120.5	213.5	18.4	4.6	23.0	236.6	297.7	534.2	9.7	44.3
Western Australia	135.7	224.1	17.2	4.8	22.0	246.0	274.5	520.5	8.9	47.3
Tasmania	34.5	59.4	5.2	2.0	7.3	66.7	100.2	166.9	10.9	40.0
Northern Territory	13.8	20.4	*	*	2.0	22.5	22.2	44.6	8.9	50.3
Australian Capital Territory	30.4	48.4	*	1.5	2.7	51.0	37.5	88.5	5.2	57.7
Australia	1,547.5	2,449.9	165.1	57.9	223.1	2,673.0	3,315.5	5,988.5	8.3	44.6
PERSONS										
New South Wales	1,860.4	2,248.1	191.8	27.6	219.4	2,467.5	1,657.8	4,125.3	8.9	59.8
Victoria	1,420.5	1,723.0	108.4	21.6	129.9	1,852.9	1,256.9	3,109.8	7.0	59.6
Queensland	833.8	1,006.0	94.6	13.8	108.4	1,114.4	762.8	1,877.2	9.7	59.4
South Australia	445.4	558.6	52.1	6.5	58.7	617.3	428.0	1,045.3	9.5	59.1
Western Australia	482.0	593.6	52.2	5.6	57.8	651.5	391.1	1,042.5	8.9	62.5
Tasmania	136.8	166.5	18.5	2.6	21.1	187.6	140.9	328.5	11.2	57.1
Northern Territory	45.1	53.8	3.7	*	4.4	58.2	36.3	94.5	7.6	61.6
Australian Capital Territory	90.7	112.6	2.9	2.0	4.9	117.5	53.3	170.8	4.1	68.8
Australia	5,314.8	6,462.3	524.2	80.5	604.6	7,066.9	4,727.0	11,793.9	8.6	59.9

Source: The Labour Force, Australia, August 1984 (6203.0).

TABLE 2.6. CIVILIAN LABOUR FORCE: BIRTHPLACE, AUGUST 1984

Birthplace	Employed		Unemployed		Labour force	Unemployment rate — per cent —	Participation rate
	Full-time workers	Total	Looking for full-time work	Total			
— '000 —							
Born in Australia	3,914.1	4,810.3	360.1	420.9	5,231.2	8.0	60.6
Born outside Australia	1,400.7	1,651.9	164.0	183.7	1,835.7	10.0	61.9
Africa	46.1	54.0	*	4.1	58.1	7.1	66.7
America	43.9	55.4	5.4	6.1	61.6	9.9	66.2
Asia	185.4	215.8	40.2	42.7	258.5	16.5	61.7
Lebanon	20.1	21.7	8.8	9.1	30.8	29.4	56.6
Vietnam	22.3	24.4	12.2	12.5	36.9	33.8	68.2
Europe	1,027.3	1,213.6	103.2	117.3	1,330.9	8.8	60.7
Germany	56.3	67.0	4.7	5.5	72.4	7.6	62.5
Greece	69.3	76.3	4.8	5.9	82.1	7.1	61.4
Italy	127.8	148.4	10.4	10.8	159.3	6.8	58.0
Malta	31.6	34.5	*	*	36.8	*	64.3
Netherlands	45.2	55.0	4.1	4.5	59.6	7.6	60.4
Poland	21.5	24.3	*	*	27.2	*	47.6
U.K. and Ireland	512.4	619.3	55.5	64.5	683.8	9.4	61.7
Yugoslavia	76.6	85.0	9.9	11.0	96.0	11.5	66.4
Oceania	98.0	113.1	11.8	13.5	126.6	10.6	73.5
New Zealand	80.6	93.7	9.2	10.0	103.7	9.6	74.5

Source: The Labour Force, Australia, August 1984 (6203.0).

TABLE 2.7. CIVILIAN POPULATION(a), FEBRUARY 1984: LABOUR FORCE EXPERIENCE DURING THE YEAR ENDING FEBRUARY 1984
(^{' 000})

	<i>Married males</i>	<i>All males</i>	<i>Married females</i>	<i>All females</i>	<i>Persons</i>
Civilian population	3,552.5	5,673.7	3,552.0	5,814.7	11,488.4
<i>In the labour force at some time during the year</i>	<i>2,936.8</i>	<i>4,639.7</i>	<i>1,817.9</i>	<i>3,134.1</i>	<i>7,773.8</i>
For 1 and under 4 weeks	8.4	48.8	64.2	108.7	157.5
4 and under 13 weeks	19.4	135.3	119.6	239.5	374.8
13 and under 26 weeks	27.0	81.9	115.9	182.7	264.6
26 and under 39 weeks	48.3	115.9	146.1	218.2	334.1
39 and under 49 weeks	116.4	204.0	210.2	294.4	498.4
49 and under 52 weeks	131.7	195.3	102.6	161.2	356.5
52 weeks	2,585.7	3,858.6	1,059.3	1,929.4	5,788.0
<i>Out of the labour force for the whole year</i>	<i>615.7</i>	<i>1,034.0</i>	<i>1,734.0</i>	<i>2,680.6</i>	<i>3,714.6</i>

(a) Excludes persons in institutions and boarding school pupils. Details of labour force experience during the period were not obtained for these persons.

Source: *Labour Force Experience, Australia, February 1984* (6206.0).

TABLE 2.8. CIVILIAN POPULATION, FEBRUARY 1984: LABOUR FORCE PARTICIPATION AT SOME TIME DURING THE YEAR ENDING FEBRUARY 1984
(Per cent)

	<i>Age group (years)</i>								<i>Total</i>
	<i>15-19</i>	<i>20-24</i>	<i>25-34</i>	<i>35-44</i>	<i>45-54</i>	<i>55-59</i>	<i>60-64</i>	<i>65 and over</i>	
Married males	*	99.1	98.9	98.2	95.6	85.0	55.6	14.4	82.7
All males	73.8	96.3	98.1	97.7	94.3	83.5	54.6	13.3	81.8
Married females	67.9	70.1	61.2	65.9	53.9	32.4	15.1	3.9	51.2
All females	71.1	82.2	65.9	66.7	55.9	34.7	15.9	3.1	53.9
Persons	72.5	89.2	82.0	82.0	75.7	59.3	34.4	7.7	67.7

Source: *Labour Force Experience, Australia, February 1984* (6206.0).

TABLE 2.9. LEAVERS FROM EDUCATIONAL INSTITUTIONS(a): LABOUR FORCE STATUS BY AGE, MAY 1984

<i>Labour force status</i>	<i>Leavers aged 15 to 19</i>			<i>Leavers aged 20 to 24</i>		
	<i>Males</i>	<i>Females</i>	<i>Persons</i>	<i>Males</i>	<i>Females</i>	<i>Persons</i>
— ' 000 —						
Employed	86.8	75.4	162.1	23.9	22.5	46.4
Full-time	78.9	61.4	140.3	20.6	18.7	39.3
Part-time	7.9	13.9	21.8	3.3	3.8	7.1
Unemployed	26.4	24.1	50.6	6.3	5.6	12.0
In the labour force	113.2	99.5	212.7	30.2	28.2	58.4
Not in the labour force	5.2	8.0	13.2	*	*	*
Total	118.4	107.5	225.9	31.2	29.9	61.1
— per cent —						
Unemployment rate	23.3	24.2	23.8	20.9	19.9	20.5
Participation rate	95.6	92.6	94.2	96.8	94.3	95.6

(a) Leavers from educational institutions are persons who were full-time students at some time in the previous year but are not currently full-time students. Some patients in hospitals and sanatoria and inmates of gaols, reformatories etc. are excluded.

Source: *Transition from Education to Work, Australia, May 1984* (6227.0).

TABLE 2.10. PERSONS AGED 15 TO 24 WHO ATTENDED SCHOOL IN 1983 BUT WERE NOT ATTENDING SCHOOL AT MAY 1984: LABOUR FORCE STATUS, TYPE OF SCHOOL LAST ATTENDED AND WHETHER ATTENDING A TERTIARY INSTITUTION

Type of school last attended	Employed			Unem- ployed	In the labour force	Not in the labour force	Total	Unem- ployment rate	Partici- pation rate
	Full-time	Part-time	Total						
— '000—									
—per cent—									
ATTENDING TERTIARY FULL TIME									
Males—									
Government/State	*	3.0	4.8	*	6.8	12.8	19.5	*	34.7
Non-government	*	*	*	*	3.8	5.8	9.5	*	39.5
Total	*	5.2	7.2	3.3	10.5	18.5	29.1	31.3	36.3
Females—									
Government/State	*	6.4	6.6	*	8.9	18.7	27.6	*	32.1
Non-government	*	3.8	3.8	*	4.0	7.3	11.3	*	35.6
Total	*	10.2	10.4	*	12.9	26.0	38.9	*	33.1
Persons—									
Government/State	*	9.4	11.4	4.2	15.6	31.5	47.1	26.9	33.2
Non-government	*	6.0	6.2	*	7.8	13.0	20.8	*	37.4
Total	*	15.4	17.6	5.8	23.4	44.5	67.9	24.6	34.5
ATTENDING TERTIARY PART TIME									
Males—									
Government/State	15.3	*	16.3	*	17.3	*	17.7	*	97.7
Non-government	3.6	*	4.1	*	4.6	*	5.0	*	92.6
Total	18.9	*	20.5	*	21.8	*	22.6	*	96.6
Females—									
Government/State	6.6	*	7.4	*	7.8	*	8.1	*	96.0
Non-government	*	*	*	*	3.2	*	3.4	*	94.9
Total	8.6	*	10.2	*	11.0	*	11.5	*	95.7
Persons—									
Government/State	21.9	*	23.7	*	25.0	*	25.8	*	97.1
Non-government	5.7	*	6.9	*	7.8	*	8.3	*	93.5
Total	27.6	3.1	30.6	*	32.8	*	34.1	*	96.3
NOT ATTENDING TERTIARY									
Males—									
Government/State	40.5	4.8	45.3	19.4	64.6	3.1	67.7	29.9	95.5
Non-government	8.9	*	9.7	*	12.2	*	13.0	*	94.1
Total	49.4	5.5	55.0	21.9	76.9	3.8	80.7	28.5	95.2
Females—									
Government/State	31.7	9.7	41.4	16.8	58.2	6.1	64.3	28.8	90.5
Non-government	8.9	*	10.4	*	13.1	*	14.1	*	92.9
Total	40.6	11.3	51.9	19.5	71.3	7.1	78.4	27.3	91.0
Persons—									
Government/State	72.2	14.5	86.7	36.2	122.9	9.2	132.1	29.4	93.1
Non-government	17.8	*	20.1	5.2	25.3	*	27.1	20.6	93.5
Total	90.0	16.9	106.9	41.4	148.2	10.9	159.2	27.9	93.1
TOTAL									
Males—									
Government/State	57.6	8.8	66.4	22.2	88.7	16.2	104.9	25.1	84.5
Non-government	12.7	3.5	16.2	4.4	20.6	6.9	27.5	21.2	74.9
Total	70.4	12.3	82.7	26.6	109.3	23.1	132.4	24.3	82.5
Females—									
Government/State	38.5	16.9	55.4	19.4	74.9	25.2	100.0	25.9	74.9
Non-government	10.9	6.1	17.0	3.3	20.3	8.4	28.8	16.2	70.7
Total	49.4	23.1	72.5	22.7	95.2	33.6	128.8	23.9	73.9
Persons—									
Government/State	96.1	25.7	121.9	41.7	163.5	41.4	205.0	25.5	79.8
Non-government	23.6	9.6	33.3	7.7	40.9	15.3	56.3	18.7	72.7
Total	119.8	35.4	155.2	49.3	204.5	56.8	261.2	24.1	78.3

Source: Transition from Education to Work, Australia, May 1984 (6227.0).

TABLE 2.11. PERSONS AGED 15 TO 24 YEARS AT MAY 1984: ATTENDANCE AT AN EDUCATIONAL INSTITUTION, LABOUR FORCE STATUS AND AGE

Institution currently attending	Employed			Unem- ployed — '000 —	In the labour force	Not in the labour force	Total	Unem- ployment rate (per cent)
	Full-time	Part-time	Total					
15 YEARS								
Attending full-time	*	38.1	39.5	15.3	54.8	180.9	235.7	27.9
Attending part-time	*	*	*	*	*	*	*	*
Total	*	38.3	40.6	15.4	56.1	181.1	237.1	27.5
Not currently attending	11.1	3.2	14.3	6.0	20.3	3.0	23.3	29.6
16 YEARS								
Attending full-time	*	39.7	41.5	10.1	51.7	129.5	181.2	19.6
Attending part-time	10.8	*	11.6	*	11.7	*	12.0	*
Total	12.7	40.4	53.1	10.3	63.4	129.8	193.2	16.3
Not currently attending	36.5	7.7	44.2	18.8	63.0	5.2	68.2	29.8
17 YEARS								
Attending full-time	3.3	25.7	29.0	5.5	34.5	70.9	105.4	16.1
Attending part-time	22.1	*	23.8	*	25.2	*	26.0	*
Total	25.4	27.4	52.8	7.0	59.7	71.6	131.4	11.6
Not currently attending	69.9	9.8	79.7	28.0	107.7	8.9	116.6	26.0
18 YEARS								
Attending full-time	3.6	11.1	14.6	3.3	17.9	41.3	59.2	18.3
Attending part-time	33.2	*	35.4	3.1	38.5	*	39.3	8.2
Total	36.8	13.2	50.0	6.4	56.4	42.1	98.5	11.4
Not currently attending	94.6	10.4	105.0	32.9	137.9	11.1	149.0	23.8
19 YEARS								
Attending full-time	*	11.2	12.7	3.0	15.7	25.0	40.7	18.9
Attending part-time	28.7	*	29.8	*	32.2	*	32.7	7.4
Total	30.2	12.3	42.6	5.4	47.9	25.5	73.4	11.2
Not currently attending	122.8	10.7	133.5	28.8	162.3	16.8	179.1	17.7
20-24 YEARS								
Attending full-time	4.1	28.5	32.7	8.0	40.7	72.4	113.1	19.7
Attending part-time	107.7	11.5	119.2	10.3	129.5	7.7	137.2	8.0
Total	111.8	40.0	151.9	18.4	170.2	80.0	250.2	10.8
Not currently attending	716.1	74.0	790.1	125.8	915.9	153.7	1,069.6	13.7

Source: *Transition from Education to Work, Australia, May 1984* (6227.0).

TABLE 2.12. CIVILIAN POPULATION AGED 15 AND OVER: EDUCATIONAL ATTAINMENT AND LABOUR FORCE STATUS, FEBRUARY 1984

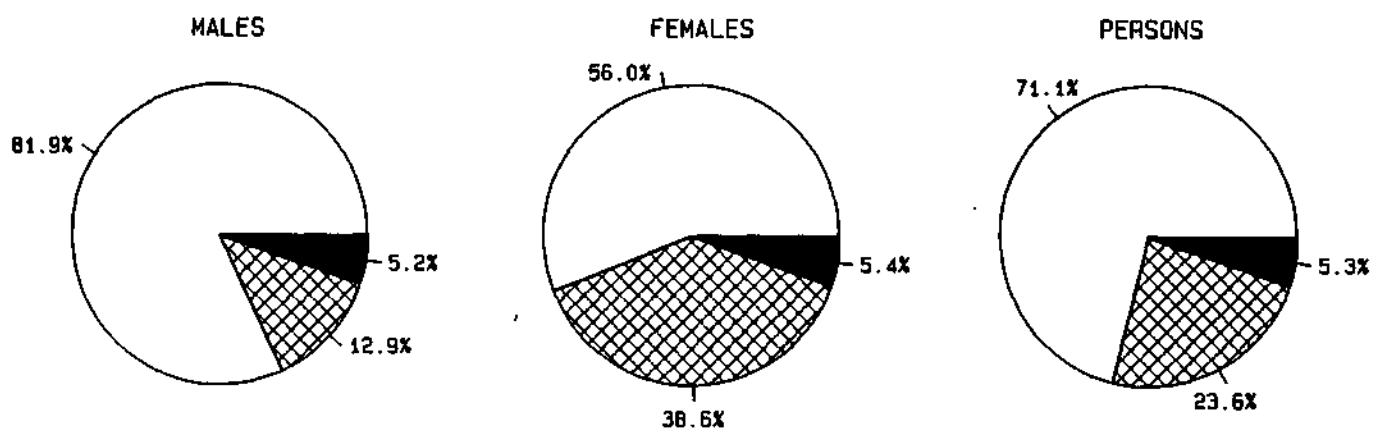
Educational attainment	Employed			Unem- ployed	In the labour force	Not in the labour force	Total	Partici- pation rate(a)	Unem- ployment rate
	Full- time	Parti- time	Total						
	— '000 —								
MALES									
With post-school qualifications	1,800.8	80.4	1,881.2	118.6	1,999.8	297.4	2,297.2	87.1	5.9
Degree or equivalent	399.6	25.5	425.1	18.9	441.1	49.0	493.1	90.1	4.3
Trade, technical level	1,370.3	54.6	1,424.9	96.7	1,521.6	244.3	1,765.9	86.2	6.4
Other	30.9	*	31.2	*	34.1	*	38.2	89.3	*
Without post-school qualifications	1,960.9	120.4	2,081.3	301.6	2,382.9	754.2	3,137.1	76.0	12.7
Attended highest level of secondary school available	418.5	35.8	454.3	60.6	514.9	103.7	618.6	83.2	11.8
Did not attend highest level of secondary school available	1,534.6	84.4	1,618.9	238.6	1,857.5	642.0	2,499.5	74.3	12.8
Left at age (years)—									
18 or over	22.2	*	22.9	4.6	27.6	*	30.9	89.1	16.8
16 or 17	493.7	27.9	521.6	84.4	606.0	68.8	674.8	89.8	13.9
14 or 15	873.2	44.2	917.5	128.4	1,045.9	408.0	1,453.9	71.9	12.3
13 or under	145.5	11.4	156.9	21.1	178.0	161.8	339.8	52.4	11.9
Never attended school	7.9	*	8.1	*	10.5	8.5	19.0	55.3	*
Still at school	*	36.0	37.8	15.7	53.5	186.0	239.5	22.3	29.3
Total	3,763.6	236.8	4,000.3	435.8	4,436.2	1,237.5	5,673.7	78.2	9.8
FEMALES									
With post-school qualifications	625.3	293.5	918.8	88.5	1,007.2	632.7	1,640.0	61.4	8.8
Degree or equivalent	138.9	45.5	184.3	14.2	198.5	71.9	270.4	73.4	7.1
Trade, technical level	465.7	238.4	704.1	71.1	775.2	532.9	1,308.1	59.3	9.2
Other	20.6	9.7	30.3	*	33.5	27.9	61.4	54.6	*
Without post-school qualifications	887.0	512.2	1,399.2	198.0	1,597.3	2,350.5	3,947.7	40.5	12.4
Attended highest level of secondary school available	225.0	108.3	333.3	41.4	374.7	281.8	656.5	57.1	11.0
Did not attend highest level of secondary school available	658.6	402.9	1,061.5	156.1	1,217.6	2,043.6	3,261.1	37.3	12.8
Left at age (years)—									
18 or over	11.1	*	14.7	*	16.4	12.8	29.2	56.2	*
16 or 17	259.4	112.9	372.2	60.9	433.1	404.7	837.9	51.7	14.1
14 or 15	340.3	256.3	596.6	82.8	679.4	1,322.8	2,002.2	33.9	12.2
13 or under	47.8	30.2	77.9	10.7	88.7	303.2	391.9	22.6	12.1
Never attended school	*	*	*	*	5.0	25.1	30.1	16.6	*
Still at school	*	46.9	47.7	15.4	63.1	164.0	227.0	27.8	24.4
Total	1,513.1	852.6	2,365.7	301.9	2,667.6	3,147.1	5,814.7	45.9	11.3
PERSONS									
With post-school qualifications	2,426.1	373.8	2,799.9	207.1	3,007.0	930.1	3,937.1	76.4	6.9
Degree or equivalent	538.5	70.9	609.5	33.1	642.6	120.9	763.5	84.2	5.2
Trade, technical level	1,836.0	293.0	2,129.0	167.8	2,296.8	777.2	3,074.0	74.7	7.3
Other	51.5	9.9	61.5	6.2	67.6	32.0	99.6	67.9	9.1
Without post-school qualifications	2,847.9	632.6	3,480.5	499.6	3,980.2	3,104.7	7,084.8	56.2	12.6
Attended highest level of secondary school available	643.5	144.1	787.6	102.0	889.6	385.5	1,275.1	69.8	11.5
Did not attend highest level of secondary school available	2,193.1	487.3	2,680.4	394.7	3,075.0	2,685.6	5,760.6	53.4	12.8
Left at age (years)—									
18 or over	33.3	*	37.7	6.3	44.0	16.1	60.1	73.2	14.3
16 or 17	753.0	140.8	893.8	145.3	1,039.2	473.5	1,512.7	68.7	14.0
14 or 15	1,213.5	300.5	1,514.0	211.2	1,725.3	1,730.8	3,456.1	49.9	12.2
13 or under	193.3	41.6	234.9	31.8	266.7	465.1	731.7	36.4	11.9
Never attended school	11.3	*	12.5	*	15.5	33.6	49.1	31.6	*
Still at school	*	82.9	85.5	31.1	116.6	349.9	466.5	25.0	26.6
Total	5,276.6	1,089.4	6,366.0	737.8	7,103.8	4,384.7	11,488.4	61.8	10.4

(a) Because it is not practicable to ascertain details of educational attainment for persons in institutions and boarding school pupils, participation rates have been calculated by using population estimates which exclude those in institutions and boarding school pupils. Participation rates and estimates of persons not in the labour force therefore differ from those given in other tables and charts.

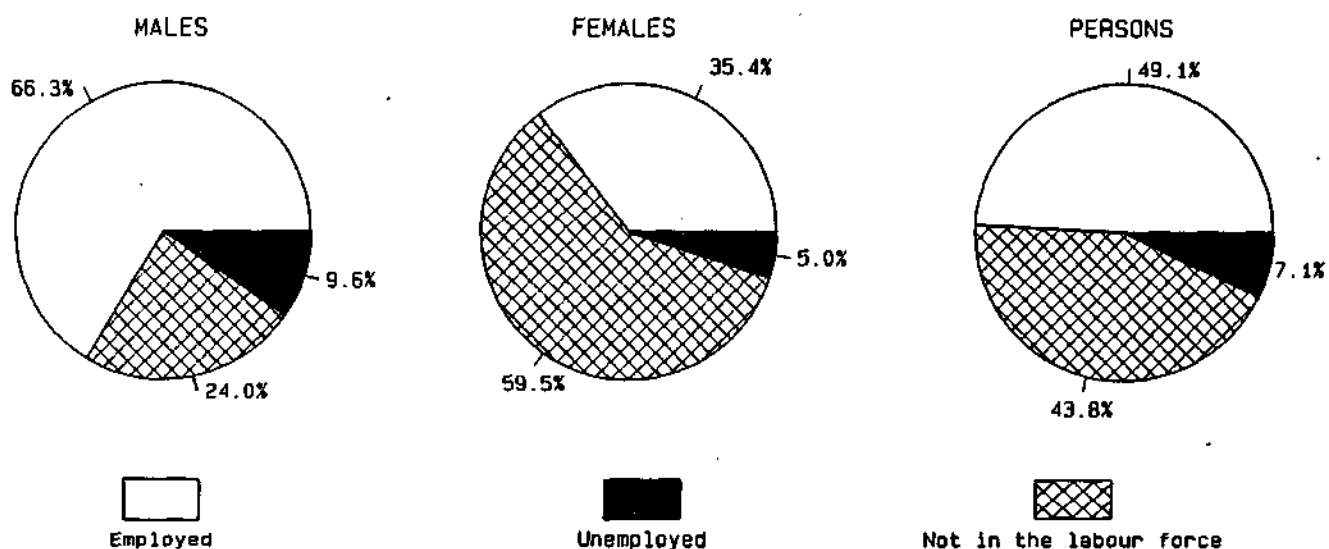
Source: Labour Force Status and Educational Attainment, Australia, February 1984 (6235.0).

**CHART 2.e. CIVILIAN POPULATION AGED 15 AND OVER :
LABOUR FORCE STATUS AND EDUCATIONAL ATTAINMENT (a),
FEBRUARY 1984**

With post-school qualifications



Without post-school qualifications



(a) Excludes persons in institutions and boarding school pupils. Details of educational attainment were not obtained for these persons.

Source: Labour Force Status and Educational Attainment, Australia, February 1984 (6235.0).

TABLE 2.13. FAMILY STATUS, PERSONS AGED 15 AND OVER, JULY 1984

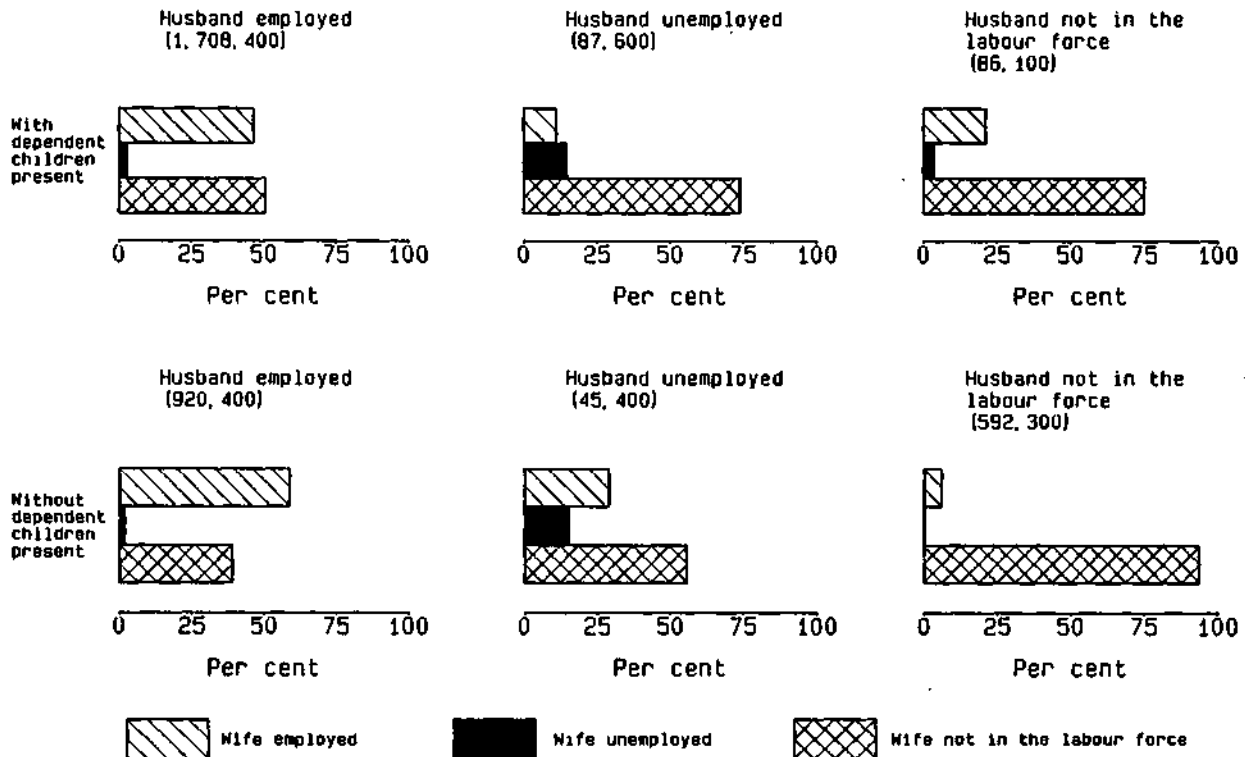
	Males			Females			Persons		
	In the labour force	Not in the labour force	Total	In the labour force	Not in the labour force	Total	In the labour force	Not in the labour force	Total
NUMBER ('000)									
<i>Member of a family</i>	3,655.9	1,028.2	4,684.1	2,180.3	2,562.8	4,743.1	5,836.1	3,591.0	9,427.1
Husband or wife	2,761.8	678.4	3,440.2	1,482.5	1,916.6	3,399.2	4,244.4	2,595.0	6,839.4
With dependent children present	1,796.0	86.1	1,882.1	869.6	968.9	1,838.5	2,665.6	1,055.1	3,720.7
Without dependent children present	965.8	592.3	1,558.1	612.9	947.7	1,560.6	1,578.8	1,540.0	3,118.7
Not-married family head	65.4	31.5	96.9	162.1	284.1	446.2	227.5	315.6	543.1
With dependent children present	30.6	8.9	39.5	111.0	163.2	274.2	141.6	172.2	313.8
Without dependent children present	34.8	22.6	57.4	51.1	120.8	171.9	86.0	143.4	229.3
Full-time student aged 15-20	78.9	225.1	304.0	90.9	220.8	311.7	169.8	445.9	615.7
Other child(a) of family head	697.7	61.9	759.6	413.0	48.9	461.9	1,110.8	110.8	1,221.5
Other relative	52.0	31.2	83.3	31.7	92.4	124.1	83.7	123.7	207.4
<i>Not a member of a family</i>	570.4	173.7	744.1	386.4	444.2	830.6	956.8	617.9	1,574.8
Living alone	250.8	130.0	380.8	153.6	392.6	546.1	404.4	522.6	926.9
Not living alone	319.6	43.7	363.3	232.8	51.6	284.4	552.5	95.3	647.8
Usual resident of a private dwelling where family status was determined	4,226.3	1,201.9	5,428.2	2,566.7	3,006.9	5,573.6	6,793.0	4,208.8	11,001.8
Usual resident of a private dwelling where family status was not determined	84.4	18.4	102.7	73.6	62.8	136.3	158.0	81.1	239.1
Total usual residents of private dwellings	4,310.7	1,220.3	5,530.9	2,640.3	3,069.7	5,710	6,951.0	4,289.9	11,240.9
Visitors to private dwellings	32.1	25.4	57.4	17.6	51.3	68.9	49.7	76.6	126.3
Persons enumerated in non-private dwellings	79.5	130.3	209.8	41.6	160.9	202.5	121.1	291.2	412.3
Total	4,422.2	1,376.0	5,798.2	2,699.5	3,281.8	5,981.3	7,121.7	4,657.8	11,779.5
PROPORTION OF TOTAL (per cent)									
<i>Member of a family</i>	82.7	74.7	80.8	80.8	78.1	79.3	81.9	77.1	80.0
Husband or wife	62.5	49.3	59.3	54.9	58.4	56.8	59.6	55.7	58.1
With dependent children present	40.6	6.3	32.5	32.2	29.5	30.7	37.4	22.7	31.6
Without dependent children present	21.8	43.0	26.9	22.7	28.9	26.1	22.2	33.1	26.5
Not-married family head	1.5	2.3	1.7	6.0	8.7	7.5	3.2	6.8	4.6
With dependent children present	0.7	0.6	0.7	4.1	5.0	4.6	2.0	3.7	2.7
Without dependent children present	0.8	1.6	1.0	1.9	3.7	2.9	1.2	3.1	1.9
Full-time student aged 15-20	1.8	16.4	5.2	3.4	6.7	5.2	2.4	9.6	5.2
Other child(a) of family head	15.8	4.5	13.1	15.3	1.5	7.7	15.6	2.4	10.4
Other relative	1.2	2.3	1.4	1.2	2.8	2.1	1.2	2.7	1.8
<i>Not a member of a family</i>	12.9	12.6	12.8	14.3	13.5	13.9	13.4	13.3	13.4
Living alone	5.7	9.4	6.6	5.7	12.0	9.1	5.7	11.2	7.9
Not living alone	7.2	3.2	6.3	8.6	1.6	4.8	7.8	2.0	5.5
Usual resident of a private dwelling where family status was determined	95.6	87.3	93.6	95.1	91.6	93.2	95.4	90.4	93.4
Usual resident of a private dwelling where family status was not determined	1.9	1.3	1.8	2.7	1.9	2.3	2.2	1.7	2.0
Total usual residents of private dwellings	97.5	88.7	95.4	97.8	93.5	95.5	97.6	92.1	95.4
Visitors to private dwellings	0.7	1.8	1.0	0.7	1.6	1.2	0.7	1.6	1.1
Persons enumerated in non-private dwellings	1.8	9.5	3.6	1.5	4.9	3.4	1.7	6.3	3.5
Total	100.0	100.0	100.0	100.0	100.0	100.0	100.0	100.0	100.0

(a) Aged 15 and over.

Source: Labour Force Status and Other Characteristics of Families, Australia, July 1984 (6224.0).

CHART 2.f. LABOUR FORCE STATUS OF HUSBAND, WIFE OR FAMILY HEAD JULY 1984

(a) MARRIED COUPLE FAMILIES



(b) OTHER FAMILIES

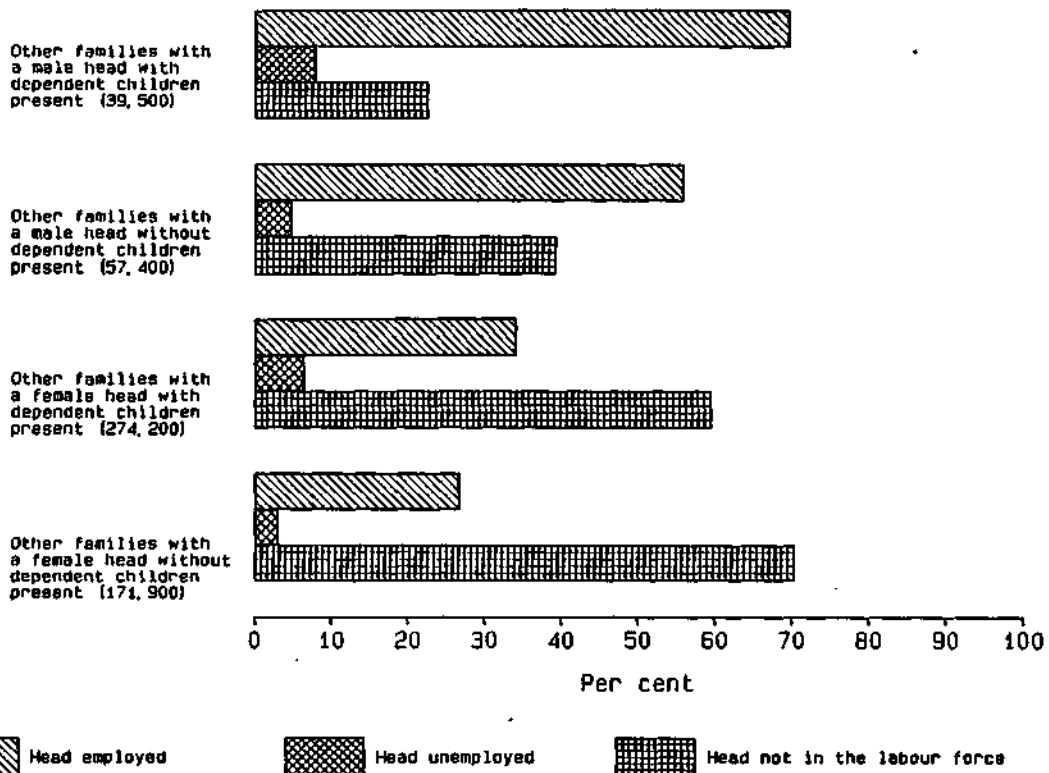


TABLE 2.14. FAMILY STATUS AND LABOUR FORCE STATUS OF PERSONS AGED 15 AND OVER, JULY 1984

	Employed		Unemployed		Labour force	Not in the labour force	Total	Unemployment rate	Participation rate	
	Full-time workers	Part-time workers	Total	Looking for full-time work						Total
—'000—							—per cent—			
MALES										
Member of a family	3,183.9	200.1	3,384.0	258.2	271.9	3,655.9	1,028.2	4,684.1	7.4	78.0
Husband	2,523.2	105.6	2,628.8	129.7	133.0	2,761.8	678.4	3,440.2	4.8	80.3
With dependent children present	1,664.1	44.3	1,708.4	86.0	87.6	1,796.0	86.1	1,882.1	4.9	95.4
Without dependent children present	859.2	61.3	920.4	43.7	45.4	965.8	592.3	1,558.1	4.7	62.0
Not-married family head	54.5	5.1	59.6	5.4	5.9	65.4	31.5	96.9	9.0	67.5
With dependent children present	25.1	*	27.5	*	*	30.6	8.9	39.5	*	77.4
Without dependent children present	29.4	*	32.1	*	*	34.8	22.6	57.4	*	60.7
Full-time student aged 15-20	11.6	51.3	62.9	8.1	16.0	78.9	225.1	304.0	20.3	25.9
Other child(a) of family head	555.2	35.3	590.6	105.4	107.2	697.7	61.9	759.6	15.4	91.9
Other relative	39.4	*	42.2	9.6	9.8	52.0	31.2	83.3	18.9	62.5
Not a member of a family	463.6	43.7	507.2	60.3	63.2	570.4	173.7	744.1	11.1	76.7
Living alone	211.6	17.2	228.7	21.2	22.1	250.8	130.0	380.8	8.8	65.9
Not living alone	252.0	26.5	278.5	39.1	41.1	319.6	43.7	363.3	12.9	88.0
Total	3,647.5	243.7	3,891.2	318.6	335.1	4,226.3	1,201.9	5,428.2	7.9	77.9
FEMALES										
Member of a family	1,177.5	811.2	1,988.7	134.7	191.6	2,180.3	2,562.8	4,743.1	8.8	46.0
Wife	755.7	642.3	1,398.0	49.9	84.6	1,482.5	1,916.6	3,399.2	5.7	43.6
With dependent children present	354.1	456.0	810.1	30.7	59.5	869.6	968.9	1,838.5	6.8	47.3
Without dependent children present	401.6	186.3	587.8	19.2	25.1	612.9	947.7	1,560.6	4.1	39.3
Not-married family head	86.3	53.0	139.3	16.0	22.8	162.1	284.1	446.2	14.1	36.3
With dependent children present	52.8	40.6	93.4	11.0	17.6	111.0	163.2	274.2	15.9	40.5
Without dependent children present	33.5	12.4	45.9	5.1	5.2	51.1	120.8	171.9	10.2	29.7
Full-time student aged 15-20	*	71.0	74.0	5.5	16.9	90.9	220.8	311.7	18.6	29.2
Other child(a) of family head	310.9	40.2	351.0	58.7	62.0	413.0	48.9	461.9	15.0	89.4
Other relative	21.7	4.7	26.4	4.6	5.2	31.7	92.4	124.1	16.5	25.5
Not a member of a family	296.8	57.5	354.3	29.1	32.1	386.4	444.2	830.6	8.3	46.5
Living alone	122.4	24.6	147.0	5.8	6.5	153.6	392.6	546.1	4.3	28.1
Not living alone	174.4	32.9	207.3	23.2	25.6	232.8	51.6	284.4	11.0	81.9
Total	1,474.3	868.7	2,343.0	163.8	223.7	2,566.7	3,006.9	5,573.6	8.7	46.1
PERSONS										
Member of a family	4,361.4	1,001.3	5,372.7	392.9	463.5	5,836.0	3,591.0	9,427.1	7.9	61.9
Husband or wife	3,278.9	747.8	4,026.8	179.6	217.6	4,244.4	2,595.0	6,839.4	5.1	62.1
With dependent children present	2,018.2	500.3	2,518.5	116.7	147.1	2,665.6	1,055.1	3,720.7	5.5	71.6
Without dependent children present	1,260.7	247.5	1,508.3	62.9	70.5	1,578.8	1,540.0	3,118.7	4.5	50.6
Not-married family head	140.8	58.1	198.8	21.5	28.7	227.5	315.6	543.1	12.6	41.9
With dependent children present	77.9	43.0	120.9	13.7	20.7	141.6	172.2	313.8	14.6	45.1
Without dependent children present	62.9	15.1	78.0	7.8	8.0	86.0	143.4	229.3	9.3	37.5
Full-time student aged 15-20	14.5	122.3	136.9	13.6	32.9	169.8	445.9	615.7	19.4	27.6
Other child(a) of family head	866.1	75.5	941.6	164.1	169.1	1,110.8	110.8	1,221.5	15.2	90.9
Other relative	61.1	7.6	68.6	14.2	15.1	83.7	123.7	207.4	18.0	40.4
Not a member of a family	760.4	101.2	861.5	89.4	95.3	956.8	617.9	1,574.7	10.0	60.8
Living alone	334.0	41.8	375.8	27.0	28.6	404.4	522.6	926.9	7.1	43.6
Not living alone	426.4	59.4	485.7	62.4	66.7	552.5	95.3	647.8	12.1	85.3
Total	5,121.8	1,112.4	6,234.2	482.3	558.8	6,793.0	4,208.8	11,001.8	8.2	61.7

(a) Aged 15 and over.

Source: Labour Force Status and Other Characteristics of Families, Australia, July 1984 (6224.0).

TABLE 2.15. FAMILY STATUS : LABOUR FORCE STATUS AND AGE OF PERSONS AGED 15 AND OVER, JULY 1984
(' 000)

	Age group (years)												Total
	15-19	20-24	25-29	30-34	35-39	40-44	45-49	50-54	55-59	60-64	65-69	70 and over	
<i>Member of a family</i>	1,111.3	972.4	999.0	1,057.7	1,049.4	825.9	686.2	627.1	621.2	530.0	383.5	563.5	9,427.1
Husband or wife with dependent children present	11.5	169.1	542.1	829.6	865.3	613.1	366.4	195.6	90.9	28.7	6.3	*	3,720.7
Employed	*	69.9	305.3	549.7	631.2	472.1	270.2	139.7	62.9	13.5	*	*	2,518.5
Not in the labour force	7.4	84.3	204.6	245.6	203.7	125.1	87.1	50.4	25.7	14.6	4.8	*	1,055.1
Husband or wife without dependent children present	14.6	221.4	250.6	116.8	80.9	133.5	250.9	374.6	471.5	444.2	339.0	420.8	3,118.7
Employed	6.8	187.3	223.3	101.8	63.3	97.9	172.5	243.7	239.1	122.2	29.5	20.8	1,508.3
Not in the labour force	5.0	23.1	18.2	11.2	12.7	32.4	70.3	121.7	221.7	314.6	309.2	399.9	1,540.0
Not-married family head with dependent children present	6.1	39.0	48.1	52.9	64.0	45.7	30.1	15.5	7.4	5.1	*	*	313.8
Employed	*	6.5	14.1	18.9	30.0	26.1	13.9	6.8	*	*	*	*	120.9
Not in the labour force	4.6	29.5	30.7	29.5	30.1	17.1	14.1	8.0	6.7	*	*	*	1,722
Not-married family head without dependent children present	*	10.9	10.6	*	6.3	12.8	20.4	23.0	27.5	28.1	19.0	67.5	229.3
Employed	*	8.5	8.5	*	4.6	8.3	14.6	11.1	11.7	4.5	*	*	78.0
Not in the labour force	*	*	*	*	*	7.4	11.5	11.5	15.1	23.4	17.7	65.5	143.4
Full-time student aged 15-20	588.9	26.8	615.7
Employed	125.9	11.0	136.9
Not in the labour force	431.1	14.8	445.9
Other child of family head	471.3	478.0	132.4	52.1	29.9	16.7	14.1	11.3	7.2	5.1	*	*	1,221.5
Employed	364.6	378.8	104.6	38.2	21.1	11.9	10.2	5.6	4.5	*	*	*	941.6
Not in the labour force	23.4	38.8	11.9	9.1	5.8	7.4	5.4	5.4	6.4	*	*	*	110.8
Other relative	18.2	27.3	15.2	6.6	..	8.4	..	7.1	16.6	21.0	15.4	71.4	207.4
Employed	12.3	20.7	11.8	4.7	..	5.1	..	*	4.8	5.5	68.6
Not in the labour force	*	..	5.4	4.8	10.6	17.6	14.8	69.7	123.7
<i>Not a member of a family</i>	76.7	268.2	214.8	133.3	84.1	58.7	56.7	68.5	86.7	108.4	111.7	307.0	1,574.7
Living alone	8.3	48.1	69.8	64.6	50.6	37.8	40.0	52.4	71.5	94.4	102.1	287.3	926.9
Employed	5.7	42.8	63.2	59.9	44.3	31.1	30.0	32.4	32.2	19.0	9.1	6.3	375.8
Not in the labour force	*	5.2	..	4.7	..	*	6.9	16.8	36.5	74.2	92.6	281.1	522.6
Not living alone	68.4	220.1	145.0	68.7	33.5	20.9	16.6	16.1	15.2	14.0	9.5	19.6	647.7
Employed	47.2	175.6	124.0	57.4	28.1	16.9	11.6	8.8	7.7	5.4	*	*	485.7
Not in the labour force	8.4	19.3	9.0	5.8	..	6.4	..	5.2	6.8	8.3	8.1	18.0	95.3
Total	1,188.0	1,240.6	1,213.9	1,191.0	1,133.5	884.6	742.8	695.6	707.9	638.3	495.1	870.4	11,001.8

Source: Labour Force Status and Other Characteristics of Families, Australia, July 1984 (6224.0).

TABLE 2.16. MARRIED-COUPLE FAMILIES(a): LABOUR FORCE STATUS OF HUSBAND AND WIFE, AND NUMBER OF FAMILY MEMBERS, JULY 1983 AND JULY 1984
(^{' 000 families})

Number of family members	Husband in the labour force			Husband not in the labour force			Total
	Wife in the labour force	Wife not in the labour force	Total	Wife in the labour force	Wife not in the labour force	Total	
JULY 1983							
Two	424.8	247.7	672.6	23.7	465.7	489.4	1,162.0
Three	267.5	308.7	576.2	11.3	93.2	104.5	680.7
Four	422.6	436.9	859.5	10.4	38.0	48.4	907.9
Five	209.5	227.3	436.7	5.3	15.7	21.0	457.8
Six or more	86.3	117.8	204.1	*	13.7	16.7	220.8
Total	1,410.6	1,338.5	2,749.1	53.7	626.4	680.1	3,429.2
JULY 1984							
Two	423.6	243.9	667.5	26.2	458.2	484.5	1,152.0
Three	278.9	299.2	578.1	12.5	91.5	104.0	682.1
Four	450.5	425.0	875.4	11.1	42.6	53.6	929.1
Five	211.5	242.1	453.6	5.5	15.5	21.0	474.6
Six or more	82.8	104.3	187.2	*	12.4	15.3	202.5
Total	1,447.3	1,314.5	2,761.8	58.3	620.1	678.4	3,440.2

(a) Estimates of numbers of husbands and wives differ from those given in Table 2.13 (see Appendix II).

Source: Labour Force Status and Other Characteristics of Families, Australia (6224.0).

TABLE 2.17. MARRIED-COUPLE FAMILIES(a): EMPLOYMENT STATUS OF HUSBAND AND EMPLOYMENT STATUS OF WIFE, JULY 1983 AND JULY 1984
(^{' 000 families})

	<i>Husband employed</i>				<i>Husband unemployed</i>	<i>Husband in the labour force</i>
	<i>Employer</i>	<i>Self-employed</i>	<i>Wage or salary earner</i>	<i>Total</i>		
JULY 1983						
<i>Wife employed</i>	92.9	185.0	1,002.6	1,280.4	29.8	1,310.3
Employer	50.5	*	13.4	67.7	*	68.0
Self-employed	5.5	99.8	38.0	143.3	*	144.7
Wage or salary earner	36.9	81.4	951.1	1,069.4	28.1	1,097.6
<i>Wife unemployed</i>	*	5.2	69.6	75.8	24.6	100.4
Wife in the labour force	93.9	190.2	1,072.2	1,356.2	54.4	1,410.6
JULY 1984						
<i>Wife employed</i>	96.6	199.1	1,043.7	1,341.3	23.0	1,364.3
Employer	51.2	5.1	11.2	67.5	*	67.9
Self-employed	5.6	109.0	43.2	157.8	*	158.5
Wage or salary earner	39.9	85.0	990.3	1,116.0	21.9	1,137.9
<i>Wife unemployed</i>	*	5.5	55.6	63.1	19.8	83.0
Wife in the labour force	98.7	204.6	1,101.2	1,404.4	42.8	1,447.3

(a) Estimates of numbers of husbands and wives differ from those given in Table 2.13 (see Appendix II).

Source: Labour Force Status and Other Characteristics of Families, Australia (6224.0).

TABLE 2.18. MARRIED-COUPLE FAMILIES : LABOUR FORCE STATUS OF HUSBAND AND WIFE, AND AGE OF YOUNGEST DEPENDENT CHILD PRESENT, JULY 1984
(* 000 Families)

	Wife employed			Wife unemployed	Wife in the labour force	Wife not in the labour force	Total
	Full time	Part time	Total				
HUSBAND EMPLOYED FULL TIME							
Families with dependent children present	335.2	440.0	775.1	43.4	818.5	845.6	1,664.1
Age of youngest dependent child (years)—							
0- 4	81.4	144.5	225.9	21.5	247.4	459.1	706.5
5- 9	88.9	135.4	224.3	12.4	236.8	175.1	411.8
10-14	111.5	119.5	231.0	7.3	238.3	149.0	387.3
15-20	53.3	40.5	93.8	*	95.9	62.4	158.4
Families without dependent children present	359.5	155.4	514.9	16.0	530.9	328.3	859.2
Total	694.6	595.4	1,290.0	59.3	1,349.3	1,173.9	2,523.2
HUSBAND EMPLOYED : TOTAL							
Families with dependent children present	344.4	454.1	798.5	45.7	844.2	864.2	1,708.4
Age of youngest dependent child (years)—							
0- 4	84.4	148.9	233.4	23.1	256.4	469.3	725.7
5- 9	91.0	140.0	230.9	12.5	243.5	177.4	420.8
10-14	114.8	123.5	238.3	7.5	245.8	152.6	398.5
15-20	54.2	41.7	95.9	*	98.5	64.9	163.3
Families without dependent children present	372.7	170.1	542.8	17.5	560.3	360.2	920.4
Total	717.1	624.2	1,341.3	63.1	1,404.4	1,224.4	2,628.8
HUSBAND IN THE LABOUR FORCE							
Families with dependent children present	349.1	459.3	808.3	58.6	866.9	929.1	1,796.0
Age of youngest dependent child (years)—							
0- 4	86.4	150.4	236.7	29.6	266.3	508.6	775.0
5- 9	92.4	141.2	233.6	16.2	249.9	190.0	439.9
10-14	115.9	125.2	241.1	9.2	250.4	162.4	412.7
15-20	54.4	42.4	96.8	*	100.3	68.1	168.4
Families without dependent children present	383.0	173.0	556.0	24.4	580.4	385.5	965.8
Total	732.1	632.3	1,364.3	83.0	1,447.3	1,314.5	2,761.8
TOTAL FAMILIES							
Families with dependent children present	360.4	466.3	826.7	61.6	888.3	993.8	1,882.1
Age of youngest dependent child (years)—							
0- 4	89.6	152.1	241.7	31.6	273.3	524.7	797.8
5- 9	95.5	142.8	238.3	17.0	255.4	201.2	456.0
10-14	119.5	127.0	246.4	9.4	255.9	186.6	442.4
15-20	55.8	44.5	100.2	*	103.8	81.4	185.2
Families without dependent children present	405.4	186.5	591.9	25.5	617.3	340.8	1,558.1
Total	765.7	652.8	1,418.6	87.0	1,505.6	1,334.6	3,440.2

Source: Labour Force Status and Other Characteristics of Families, Australia, July 1984 (6224.0).

TABLE 2.19. OTHER FAMILIES : LABOUR FORCE STATUS OF FAMILY HEAD AND AGE OF YOUNGEST DEPENDENT CHILD PRESENT, JULY 1984
(* 000 families)

	Family head employed			Family head unemployed	Family head in the labour force	Family head not in the labour force	Total
	Full time	Part time	Total				
Families with dependent children present	77.9	43.0	120.9	20.7	141.6	172.2	313.8
Age of youngest dependent child (years)—							
0-4	10.0	9.3	19.3	5.6	24.9	68.8	93.7
5-9	19.3	12.6	31.9	6.6	38.5	44.8	83.3
10-14	29.9	14.4	44.3	5.9	50.2	42.9	93.1
15-20	18.7	6.7	25.4	*	28.0	15.7	43.7
Families without dependent children present	62.9	15.1	78.0	8.0	86.0	143.4	229.3
Total	140.8	58.1	198.8	28.7	227.5	315.6	543.1

Source: Labour Force Status and Other Characteristics of Families, Australia, July 1984 (6224.0).

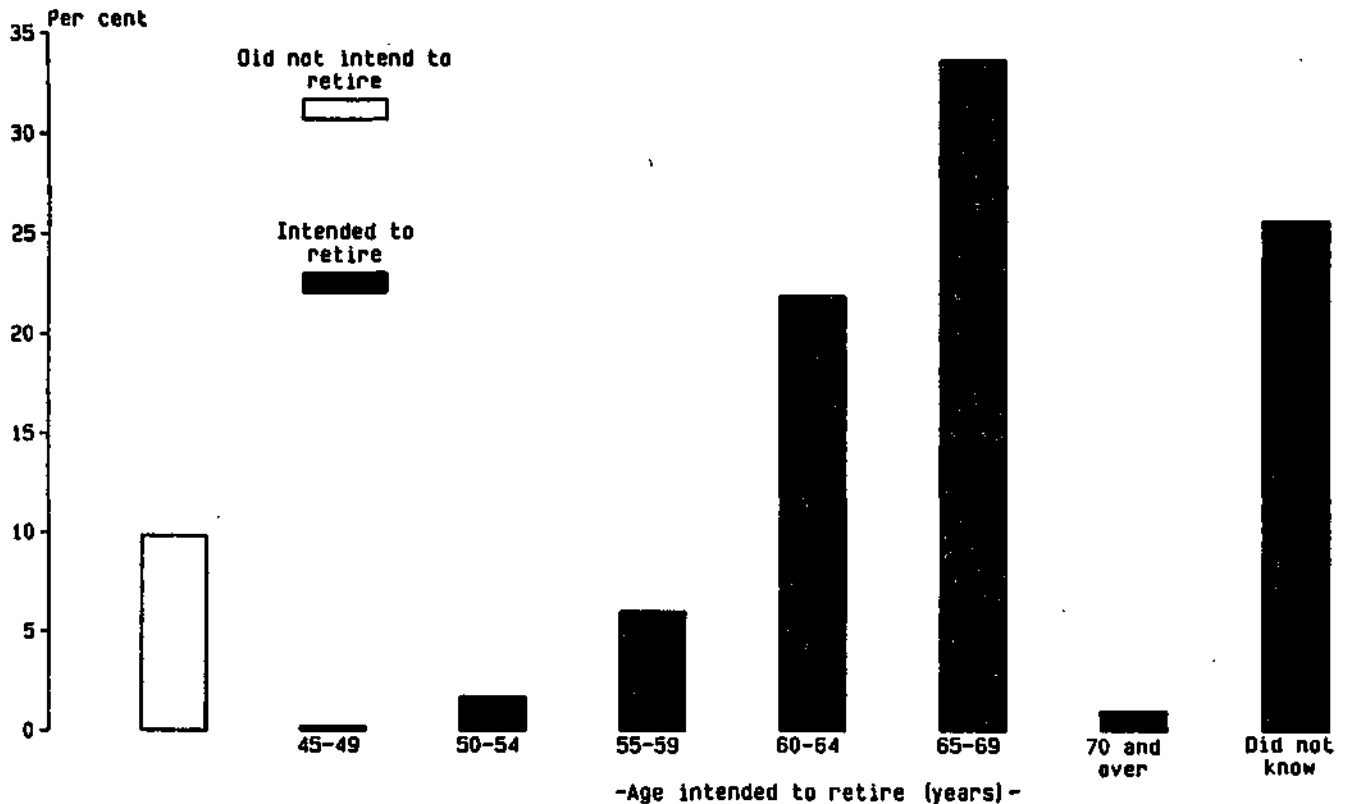
TABLE 2.20. PERSONS AGED 45 AND OVER(a) : WHETHER INTENDED TO RETIRE FROM FULL-TIME WORK, AGE INTENDED TO RETIRE AND AGE AT SEPTEMBER 1984
(^{'000})

	Age at September 1984 (years)						
	45-49	50-54	55-59	60-64	65-69	70 and over	Total
MALES							
Had retired from full-time work(b)	24.7	39.3	80.9	184.6	218.9	348.7	897.1
Had not retired from full-time work(c)	372.0	343.2	298.1	126.3	23.4	14.6	1,177.6
Did not ever intend to retire	27.6	28.7	24.8	17.5	9.0	10.7	118.2
Intended to retire	344.4	314.5	273.4	108.7	14.4	3.9	1,059.4
Age intended to retire (years)—							
45-49	*	*
50-54	4.5	*	6.2
55-59	25.2	15.7	7.5	48.4
60-64	64.8	72.6	69.6	11.9	218.8
65-69	148.2	142.5	133.4	72.2	4.3	..	500.6
70 and over	*	*	3.4	*	*	*	13.7
Did not know	98.9	79.9	59.5	21.8	8.8	*	271.4
Total	396.7	382.4	379.1	310.9	242.3	363.3	2,074.7
FEMALES							
Had retired from full-time work(b)	230.2	253.5	294.8	329.3	274.5	529.6	1,911.9
Had not retired from full-time work(c)	160.5	105.9	71.1	19.3	6.8	*	366.5
Did not ever intend to retire	10.0	8.8	7.6	*	*	*	32.6
Intended to retire	150.5	97.1	63.6	16.7	4.7	*	333.9
Age intended to retire (years)—							
45-49	3.3	3.3
50-54	14.9	4.6	19.5
55-59	18.9	17.7	6.9	43.5
60-64	47.8	35.7	32.2	3.9	119.7
65-69	4.2	5.7	5.5	4.0	*	..	19.7
70 and over	*	*	*	*	*	*	*
Did not know	61.0	32.9	18.4	8.3	4.0	*	125.8
Total	390.6	359.4	365.9	348.6	281.3	532.5	2,278.4
PERSONS							
Had retired from full-time work(b)	254.8	292.8	375.7	513.9	493.4	878.3	2,809.0
Had not retired from full-time work(c)	532.5	449.0	369.3	145.6	30.2	17.5	1,544.1
Did not ever intend to retire	37.6	37.4	32.3	20.2	11.1	12.2	150.8
Intended to retire	494.8	411.6	336.9	125.4	19.1	5.3	1,393.2
Age intended to retire (years)—							
45-49	3.7	3.7
50-54	19.4	6.2	25.6
55-59	44.1	33.4	14.4	91.9
60-64	112.6	108.3	101.8	15.8	338.6
65-69	152.3	148.1	138.9	76.3	4.6	..	520.3
70 and over	*	*	3.9	3.2	*	*	16.0
Did not know	159.9	112.9	78.0	30.1	12.8	3.4	397.2
Total	787.3	741.8	745.0	659.6	523.6	895.8	4,353.0

(a) Excludes persons who were institutionalised or permanently unable to work who were not in the scope of this survey. (b) Includes some persons who had never worked full-time. (c) Includes persons who had never worked full-time but who were looking for full-time work, would like full-time work or intended to take up full-time work at some time.

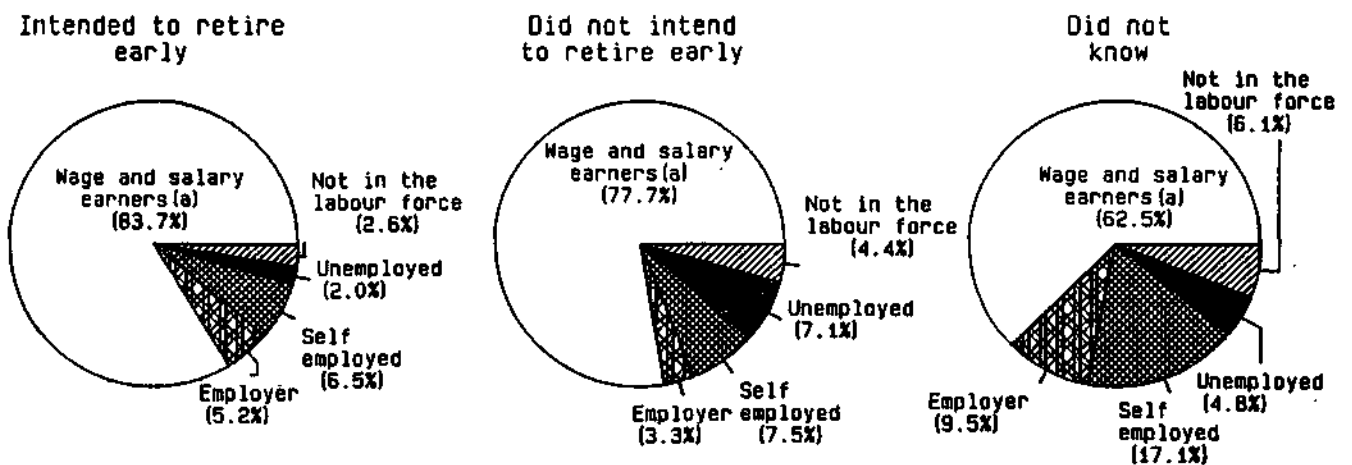
Source: *Persons Who Intended to Retire from Full-time work, Australia, September 1984* (6258.0).

CHART 2.g. PERSONS AGED 45 AND OVER : WHETHER INTENDED TO RETIRE FROM FULL-TIME WORK AND AGE INTENDED TO RETIRE, SEPTEMBER 1984



Source: Persons Who Intended to Retire from Full-time Work, Australia, September 1984 (6258.0).

CHART 2.h. PERSONS AGED 45 AND OVER WHO INTENDED TO RETIRE FROM FULL TIME WORK : WHETHER INTENDED TO RETIRE EARLY, LABOUR FORCE STATUS AND STATUS OF WORKER, SEPTEMBER 1984



Source: Persons Who Intended to Retire from Full-time Work, Australia, September 1984 (6258.0).

TABLE 2.21. PERSONS AGED 45 AND OVER WHO INTENDED TO RETIRE FROM FULL-TIME WORK : LABOUR FORCE STATUS, STATUS OF WORKER AND AGE INTENDED TO RETIRE, SEPTEMBER 1984
(' 000)

	Age intended to retire (years)							
	45-49	50-54	55-59	60-64	65-69	70 and over	Did not know	Total
MALES								
Employed	*	5.9	46.9	209.9	447.3	11.5	245.6	967.4
Employer	*	*	3.4	9.9	14.2	*	30.2	60.6
Self-employed	*	*	4.7	14.3	37.0	3.7	53.4	113.5
Wage and salary earner	*	4.6	38.8	185.8	395.6	5.9	161.6	792.4
Unpaid family helper	*	*	*	*	*	*	*	*
Unemployed	*	*	*	4.8	37.5	*	15.3	59.0
Looking for full-time work	*	*	*	4.6	36.5	*	15.1	57.4
Looking for part-time work	*	*	*	*	*	*	*	*
Not in the labour force	*	*	*	4.0	15.8	*	10.5	33.0
Total	*	6.2	48.4	218.8	500.6	13.7	271.4	1,059.4
FEMALES								
Employed	3.3	17.3	40.7	101.5	17.9	*	108.3	290.9
Employer	*	*	*	4.2	*	*	7.5	16.4
Self-employed	*	*	*	6.4	*	*	14.5	25.7
Wage and salary earner	3.0	16.0	36.1	91.0	15.1	*	85.4	247.8
Unpaid family helper	*	*	*	*	*	*	*	*
Unemployed	*	*	*	7.7	*	*	3.6	13.5
Looking for full-time work	*	*	*	7.0	*	*	3.6	12.8
Looking for part-time work	*	*	*	*	*	*	*	*
Not in the labour force	*	*	*	10.5	*	*	13.8	29.5
Total	3.3	19.5	43.5	119.7	19.7	*	125.8	333.9
PERSONS								
Employed	3.6	23.2	87.6	311.5	464.9	13.4	353.9	1,258.3
Employer	*	*	5.6	14.1	15.4	*	37.7	77.0
Self-employed	*	*	7.1	20.7	38.6	4.1	67.9	139.1
Wage and salary earner	3.2	20.6	74.9	276.7	410.7	7.1	247.0	1,040.2
Unpaid family helper	*	*	*	*	*	*	*	*
Unemployed	*	*	*	12.5	37.8	*	18.9	72.5
Looking for full-time work	*	*	*	11.6	36.9	*	18.8	70.2
Looking for part-time work	*	*	*	*	*	*	*	*
Not in the labour force	*	*	3.4	14.6	17.3	*	24.3	62.5
Total	3.7	25.6	91.9	338.6	520.3	16.0	397.2	1,393.2

Source: Persons Who intended to Retire from Full-time Work, Australia, September 1984 (6258.0).

TABLE 2.22. PERSONS AGED 45 AND OVER WHO INTENDED TO RETIRE FROM FULL-TIME WORK : SUMMARY OF CHARACTERISTICS AND AGE INTENDED TO RETIRE, SEPTEMBER 1984
(^{' 000})

	Age intended to retire (years)						
	Males			Females			
	45-64	65 and over	Total(a)	45-59	60 and over	Total(a)	Persons(a)
Total	273.7	514.3	1,059.4	66.3	141.8	333.9	1,393.2
Expected main source of income at retirement—							
Superannuation	130.0	102.9	272.7	7.0	25.5	40.9	313.6
Life assurance and other schemes	4.5	6.7	15.9	*	*	*	17.9
Government pensions and benefits(b)	56.8	334.8	508.9	14.4	83.3	158.4	667.2
Investments	48.1	31.3	115.5	7.3	10.7	26.4	141.9
Savings/sale of assets	10.8	9.0	33.2	*	*	8.7	41.9
Part-time work	11.1	4.8	19.0	*	*	*	21.9
Dependent upon another person	*	*	4.1	32.3	11.0	64.6	68.7
Other(c)	11.2	23.4	90.0	*	6.9	30.1	120.1
Expected type of payment from retirement scheme—							
Belonged to a scheme	229.8	329.3	702.6	27.5	66.1	131.7	834.4
Lump sum only	109.6	191.0	367.4	19.0	32.1	71.2	438.6
Regular payments only	27.1	26.9	62.7	*	6.6	11.6	74.3
Lump sum and regular payments	44.8	22.8	76.0	3.4	7.7	12.9	88.9
No lump sum or regular payments	*	3.4	7.2	*	*	*	8.1
Did not know type of payments	46.7	85.3	189.3	*	19.2	35.1	224.4
Did not belong to a scheme	43.9	184.9	356.8	38.8	75.7	202.1	558.9
Expected time until retirement—							
4 years or less	86.9	59.8	146.7	36.5	33.4	69.9	216.7
5 to 9 years	97.1	125.6	222.7	24.7	39.7	64.4	287.1
10 to 14 years	73.2	146.5	219.8	5.1	51.3	56.4	276.2
15 to 19 years	16.4	146.3	162.7	*	15.6	15.6	178.3
20 years or more	..	36.1	36.1	..	*	*	37.8
Did not know	271.4	125.8	397.2
Current housing arrangements—							
Owns own home	137.0	245.4	525.2	32.9	64.4	160.1	685.3
Paying off home	100.4	162.2	336.6	25.6	42.9	102.4	438.9
Renting from Housing Commission	6.4	21.7	36.0	*	6.1	11.4	47.4
Renting from other	24.7	66.2	127.5	5.0	19.1	42.6	170.1
Rent free	4.1	15.1	27.1	*	6.2	11.1	38.1
Other	*	3.6	7.0	*	3.1	6.3	13.3
Expected housing arrangements at retirement—							
Own own home	220.7	382.0	796.0	48.2	96.2	225.4	1,021.5
Paying off home	26.0	38.7	80.1	10.7	14.1	35.0	115.2
Renting from Housing Commission	5.6	17.8	29.3	*	5.8	10.9	40.2
Renting from other	6.4	32.1	52.2	*	7.6	17.3	69.5
Rent free	*	6.2	10.2	*	4.9	7.4	17.6
Other	*	*	4.9	*	*	*	7.6
Did not know	11.9	34.6	86.6	*	11.6	35.1	121.7

(a) Includes persons who did not know at what age they intended to retire. (b) May include some Government superannuation. (c) Includes persons who did not know what their main source of income would be.

Source: Persons Who Intended to Retire from Full-time Work, Australia, September 1984 (6258.0).