

COMMONWEALTH BUREAU OF CENSUS AND STATISTICS,  
CANBERRA, AUSTRALIA

# LABOUR REPORT.

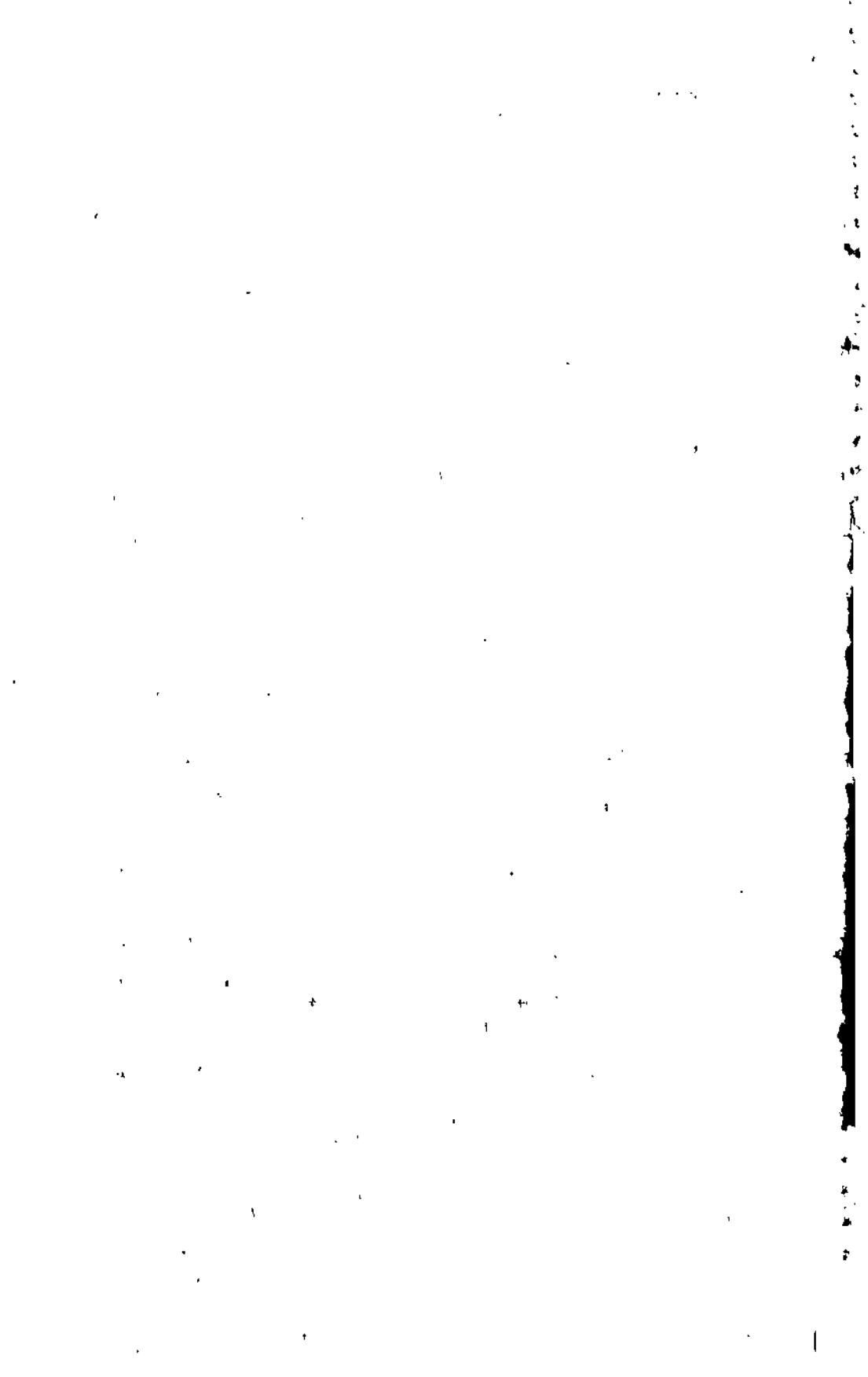
1951.

No. 40.

PREPARED UNDER INSTRUCTIONS FROM THE RIGHT HONORABLE  
THE TREASURER

BY

S. R. CARVER,  
ACTING COMMONWEALTH STATISTICIAN.



## PREFACE.

The first Labour Report issued by this Bureau was published in 1912. This Report is the fortieth of the series and deals chiefly with 1951, in addition to providing comparisons for previous years. Some of the tabulations, however, include particulars relating to 1952.

The Report follows in the main the lines of its immediate predecessors in scope and arrangement. In view, however, of anomalies which have become evident of recent years the classification of causes of industrial disputes has been made on a revised and improved basis, while tables showing the results of disputes have been discontinued. The subject-matter has been divided into five Chapters, viz., Retail Prices and Price Indexes; Wholesale Prices and Price Indexes; Wages and Hours; Employment and Unemployment (including Industrial Disputes); and Labour Organizations. The index at the end of the volume will considerably facilitate reference.

In tabulating the results of investigations as to rates of wage, labour organizations, unemployment, industrial disputes, &c., the following grouping has been adopted in this Report:—

### Groups of Industries and Occupations.

<p>I. Wood, Furniture, Sawmills, Timber-works, &amp;c.</p>	<p>VIII. Mining, Quarrying, &amp;c.</p>
<p>II. Engineering, Metal Works, &amp;c.</p>	<p>IX. Railway and Tramway Services.</p>
<p>III. Food, Drink, and Tobacco—Manufacture and Distribution.</p>	<p>X. Other Land Transport.</p>
<p>IV. Clothing, Textiles, &amp;c.</p>	<p>XI. Shipping, Wharf Labour, &amp;c.</p>
<p>V. Books, Printing, Bookbinding, &amp;c.</p>	<p>XII. Pastoral, Agricultural, Rural, Horticultural, &amp;c.</p>
<p>VI. Other Manufacturing.</p>	<p>XIII. Domestic, Hotels, &amp;c.</p>
<p>VII. Building.</p>	<p>XIV. Miscellaneous.</p>

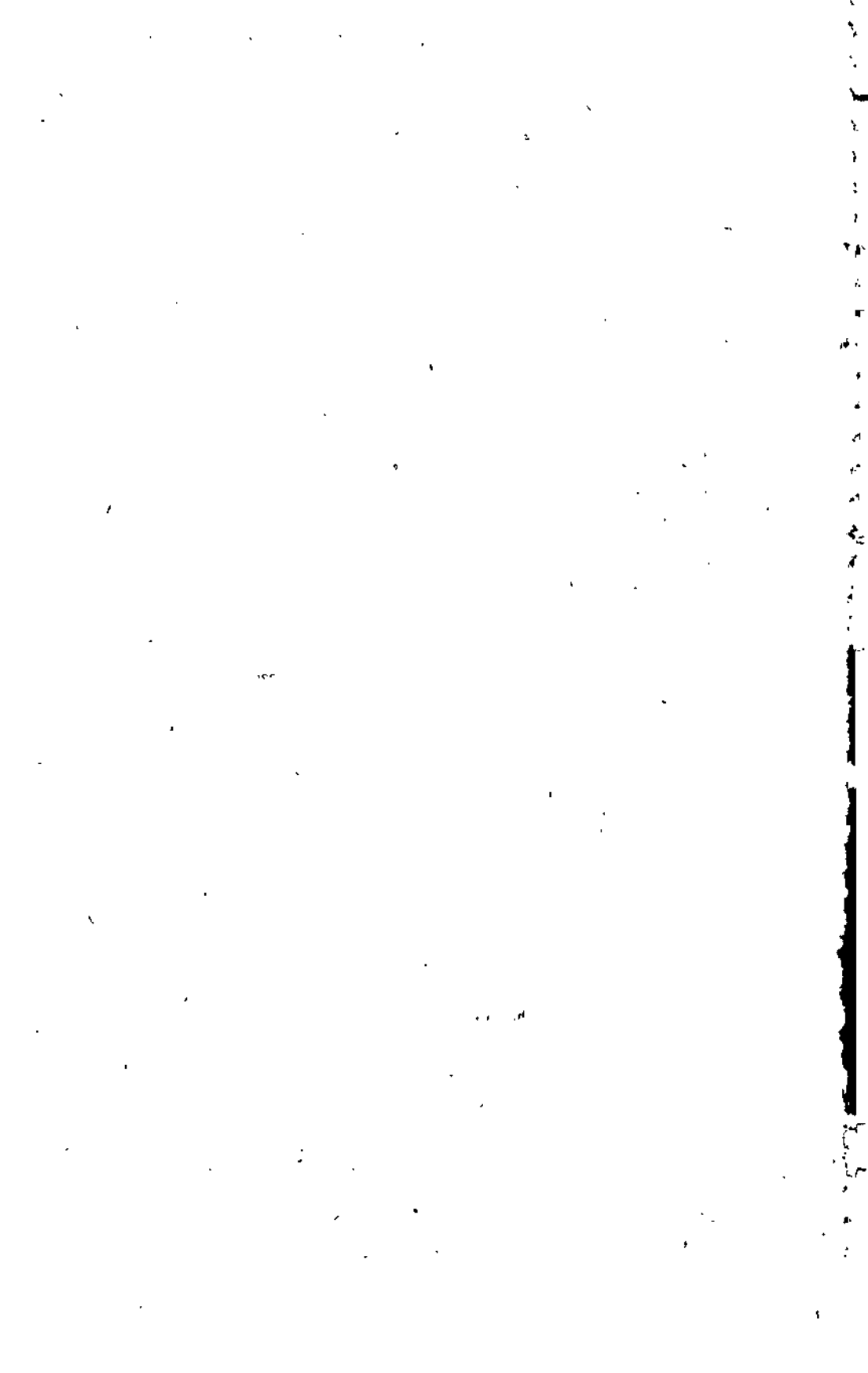
Secretaries of trade unions and of employers' associations, officials of Commonwealth and State Departments, private employers, retail traders, house agents, and others have readily supplied much information specially for the purposes of this Report, and my thanks are tendered to all who have thus assisted.

Grateful acknowledgment is also made of the continued assistance given by the Statistical Offices in the various States, especially in regard to the collection of retail prices.

I also desire to express my appreciation of the work done in the preparation of this Report by Mr. F. Stewart, B.Com., the Supervisor of the Prices Branch, Mr. T. J. Fallon, B.A., until recently the Supervisor of the Employment and Labour Branch, and the staff under their control.

S. R. CARVER,  
*Acting Commonwealth Statistician.*

Commonwealth Bureau of Census and Statistics,  
Canberra, A.C.T., 8th January, 1953.



# SYNOPSIS.

## CHAPTER I.—RETAIL PRICES AND PRICE INDEXES.

Page.

§	1. Collection of Information as to Retail Prices .. .. .	1
§	2. Retail Price Indexes—	
	1. General .. .. .	2
	2. Essential Features .. .. .	3
	3. The Regimen .. .. .	3
	4. Purpose of Retail Price Indexes .. .. .	3
	5. Effects of Abnormal Conditions on Indexes .. .. .	4
§	3. Various Retail Price Indexes .. .. .	4
§	4. Retail Price Levels ("C" Series Index) 1914-1952—	
	1. Significant Dates .. .. .	5
	2. All Items ("C" Series) Retail Price Index, Six Capital Cities, 1914-1952 .. .. .	6
§	5. Increases in Retail Prices since Outbreak of War in 1939—	
	1. Australia .. .. .	7
	2. International Comparisons .. .. .	8
§	6. Construction of All Items ("C" Series) Retail Price Index—	
	1. The Regimen .. .. .	10
	2. The Mass Units (or "Weights") and Method of Tabulation .. .. .	13
	3. Relative "Aggregate Expenditure" of Items and Groups .. .. .	15
	4. Base Periods of the Indexes .. .. .	16
	5. Relative Population Weights for Towns .. .. .	17
§	7. Tabular Statements of Retail Price Index-Numbers—	
	1. General .. .. .	18
	2. All Items ("C" Series) Retail Price Index .. .. .	18
	Six Capital Cities, December Quarters, 1939, and 1946 to 1951 .. .. .	19
	Six Capital Cities, November, 1914, to November, 1920 .. .. .	20
	Thirty Towns 1914, and 1921 to 1951 .. .. .	21
	Additional Towns, 1939, and 1941 to 1951 .. .. .	24
	"Group" Index-Numbers of "C" Series, Thirty Towns—1914, 1921, 1939 and 1944 to 1951 (Food and Groceries, Housing, Clothing, Miscellaneous) .. .. .	25
	3. "R" Series Retail Price Index: Food, Groceries and Rent .. .. .	28
	Six Capital Cities, 1907 to 1951 .. .. .	28
	Groceries .. .. .	28
	Dairy Produce .. .. .	28
	Meat .. .. .	28
	Food and Groceries .. .. .	28
	Housing (4 and 5-roomed Houses) .. .. .	28
	Food, Groceries and Housing .. .. .	28
	Thirty Towns, 1914, 1921, 1939 and 1944 to 1951—Groups and Total .. .. .	29
§	8. Retail Price Index-Numbers, 200 Towns .. .. .	32
§	9. Changes in the Regimen—	
	1. General .. .. .	32
	2. Revision of 1936 .. .. .	33
	3. Method of Effecting Changes .. .. .	34
	4. Continuity of Indexes .. .. .	34
	5. The Regimen under War Conditions .. .. .	35
	6. The Regimen since 1945 .. .. .	35
§	10. Retail Price Indexes and Basic Wage Variations—	
	(i) "A" Series Index .. .. .	38
	(ii) "B" Series Index .. .. .	38
	(iii) "C" Series Index .. .. .	38
	(iv) "D" Series Index .. .. .	39
	(v) Food and Groceries .. .. .	39
	(vi) The "200 Towns" Series .. .. .	39
	(vii) The "Court" Index .. .. .	39
§	11. Scales Used for Automatic Wage Adjustment .. .. .	40
§	12. International Comparisons: Retail Price Index-Numbers .. .. .	42

**CHAPTER II.—WHOLESALE PRICES AND PRICE INDEXES.**

§ 1. General .. .. .	45
§ 2. Wholesale Price (Basic Materials and Foodstuffs) Index—	
1. Price Quotations .. .. .	45
2. Commodities and Grouping .. .. .	45
3. Method of Construction .. .. .	45
4. Index-numbers, 1928 to 1951 .. .. .	47
5. Effect of Wool Bounty .. .. .	48
§ 3. Melbourne Wholesale Price Index—	
1. General .. .. .	48
2. Index-numbers, 1861 to 1951 .. .. .	49
§ 4. International Comparisons : Wholesale Price Index-Numbers, 1939 to 1951 ..	50

**CHAPTER III.—WAGES AND HOURS.**

§ 1. Arbitration and Wages Board Acts and Associated Legislation—	
1. General .. .. .	52
2. Laws Regulating Industrial Matters .. .. .	52
3. Methods of Administration .. .. .	52
4. Awards, Determinations and Agreements in Force .. .. .	55
5. New Legislation and Special Reports .. .. .	56
§ 2. Rates of Wage and Hours of Labour—	
1. General .. .. .	57
2. Adult Male Weekly Wages—States, 1891 to 1951 .. .. .	59
3. Adult Male Weekly Wages—Australia—Industrial Groups, 1891 to 1951 ..	59
4. Adult Female Weekly Wages—States, 1914 to 1951 .. .. .	61
5. Adult Female Weekly Wages—Australia—Industrial Groups, 1914 to 1951 ..	62
6. Weekly and Hourly Rates of Wage, and Weekly Hours of Labour, 31st December, 1951—	
(i) General .. .. .	62
(ii) Adult Males .. .. .	63
(iii) Adult Females .. .. .	64
7. Adult Male Hourly Wages—States, 1914 to 1951 .. .. .	65
8. Adult Female Hourly Wages—States, 1914 to 1951 .. .. .	66
9. Nominal Weekly Hours of Labour—Adult Males, States, 1914 to 1951 ..	67
10. Nominal Weekly Hours of Labour—Adult Females, States, 1914 to 1951 ..	67
11. Nominal and Effective Wages, 1911 to 1951 .. .. .	68
12. Productive Activity .. .. .	71
§ 3. Standard Hours of Work—	
1. General .. .. .	71
2. The 44-hour Week .. .. .	71
3. The 40-hour Week .. .. .	72
§ 4. The Basic Wage and Child Endowment in Australia—	
1. The Basic Wage—	
(i) General .. .. .	73
(ii) Acts in Force .. .. .	73
2. The Commonwealth Basic Wage—	
(i) General .. .. .	73
(ii) Basic Wage Inquiry, 1934 .. .. .	76
(iii) Basic Wage Inquiry, 1937 .. .. .	77
(iv) "Lag" in Adjustments .. .. .	78
(v) Basic Wage Inquiry, 1940 .. .. .	78
(vi) "Interim" Basic Wage, 1946 .. .. .	79
(vii) Basic Wage Inquiry, 1949-1950 .. .. .	81
(viii) Rates Operative, Principal Towns, November, 1952 .. .. .	83
3. Basic Wage Rates for Females .. .. .	83
4. Australian Territories .. .. .	89
5. State Basic Wages .. .. .	96
6. Royal Commission on Basic Wage, 1920 .. .. .	106
7. Child Endowment .. .. .	108

## CHAPTER IV.—EMPLOYMENT AND UNEMPLOYMENT.

§ 1. Employment—	
1. General .. .. .	110
2. Total Occupied Persons—	
(i) Australia, 1933 to 1947 .. .. .	110
(ii) States, July, 1939 and June, 1947 .. .. .	112
3. Wage and Salary Earners in Civilian Employment—	
(i) Australia, Industrial Groups, 1939 to 1952 .. .. .	114
(ii) States, 1933 to 1952 .. .. .	115
(iii) Factories, by Main Classes, 1939 to 1952 .. .. .	117
§ 2. Unemployment—	
1. Total Persons Unemployed .. .. .	118
2. Unemployment in Reporting Trade Unions—	
(i) General .. .. .	119
(ii) Australia, 1891 to June Quarter, 1952 .. .. .	119
(iii) Australia, by Industrial Groups, 1951 .. .. .	120
(iv) Australia, by Industrial Groups, September Quarter, 1939, and Quarterly, September, 1950, to June, 1952 .. .. .	121
(v) States, 1951 .. .. .	121
(vi) States, 1932 to 1951, and Quarterly, March, 1949, to June, 1952 .. .. .	122
3. Unemployment, Various Countries, 1951 .. .. .	123
§ 3. Commonwealth Employment Service .. .. .	123
§ 4. State Labour Exchanges .. .. .	125
§ 5. Commonwealth Unemployment and Sickness Benefits—	
1. General .. .. .	125
2. Maximum Rates of Benefits and Income .. .. .	125
3. Means Test .. .. .	126
4. Waiting Period .. .. .	126
5. Special Benefit .. .. .	126
6. Rehabilitation .. .. .	126
7. Unemployment Benefits .. .. .	127
§ 6. Industrial Disputes—	
1. General .. .. .	127
2. Industrial Disputes in Industrial Groups, 1951 .. .. .	128
3. Industrial Disputes, 1939 and 1947 to 1951 .. .. .	131
4. Duration of Industrial Disputes .. .. .	132
5. Causes of Industrial Disputes .. .. .	135
6. Results of Industrial Disputes .. .. .	136
7. Methods of Settlement .. .. .	137
§ 7. Industrial Accidents—	
1. General .. .. .	139
2. Mining Accidents, 1951 .. .. .	139

## CHAPTER V.—LABOUR ORGANIZATIONS.

§ 1. Labour Organizations in Australia—	
1. General .. .. .	141
2. Trade Unions—Number and Membership, 1939 and 1948 to 1951 .. .. .	141
3. Trade Unions—Industrial Groups, 1939 and 1948 to 1951 .. .. .	142
4. Trade Unions—Numbers of Male and Female Members and Ratio to Wage and Salary Earners—	
(i) States, 1951 .. .. .	143
(ii) Australia, 1939 and 1948 to 1951 .. .. .	143
5. Trade Unions—Classification according to Number of Members, 1939 and 1948 to 1951 .. .. .	144
6. Interstate or Federated Trade Unions, 1939 and 1948 to 1951 .. .. .	144
7. Central Labour Organizations, 1939 and 1948 to 1951 .. .. .	145
8. Organizations Registered under the Conciliation and Arbitration Act .. .. .	146
§ 2. International Labour Organization—	
1. General .. .. .	147
2. The 35th Session .. .. .	147
3. Governing Body .. .. .	147

	Page.
<b>APPENDIX.</b>	
Section I. Average Retail Prices of Chief Food and Groceries Items, each Capital City, monthly, 1951 .. .. .	148
.. II. Weekly House Rents in Metropolitan and Provincial Towns, 1939 and 1946 to 1951 .. .. .	154
.. III. Average Retail Prices of Food in Principal Cities: Australia and Other Countries, 1951 .. .. .	155
.. IV. "Court" Index (Second Series), December Quarter, 1949 to December Quarter, 1950 .. .. .	158
.. "Court" Index (Third Series), December Quarter, 1951 to December Quarter, 1952 .. .. .	159
.. V.—Retail Prices—Extract from the Report of Proceedings of the Conference of British Commonwealth Statisticians held at Canberra, November, 1951 .. .. .	160
.. VI. Minimum Rates of Wage and Hours of Labour for Adult Male Workers, 31st December, 1951 .. .. .	163
.. VII. Minimum Rates of Wage and Hours of Labour for Adult Female Workers, 31st December, 1951 .. .. .	177
.. VIII. Weekly Rates of Wage and Hours of Labour: Australia, Great Britain and Northern Ireland and New Zealand .. .. .	180
.. IX. Commonwealth Court of Conciliation and Arbitration Basic Wage Rates, 1923 to 1953 .. .. .	183
.. X. Comparative Index-numbers (1911 Base): Six Capital Cities, 1911 to December Quarter, 1952—Retail Prices, Wages and Unemployment .. .. .	186
<hr/>	
<b>INDEX</b> .. .. .	187

#### GRAPHS.

1. Wholesale and Retail Prices: Nominal and Effective or Real Wages—Index-numbers, Australia, 1911 to 1952 .. .. .	51
2. Wages and Salary Earners in Civilian Employment, Australia, 1939 to 1952, by main Industrial Groups .. .. .	113
3. Industrial Disputes: Working Days Lost in Industrial Groups, Australia, 1937 to 1951 .. .. .	130
4. Industrial Disputes: Working Days Lost, Australia, 1913 to 1951 .. .. .	133