



NEW ISSUE

1995

EMBARGOED UNTIL 11.30 AM 30 SEPTEMBER 1996

**Experimental Estimated
Resident Population
Community Government
Councils and Incorporated
Associations
Northern Territory**

Statistics



**EXPERIMENTAL ESTIMATED RESIDENT
POPULATION
COMMUNITY GOVERNMENT COUNCILS
AND INCORPORATED ASSOCIATIONS
NORTHERN TERRITORY
1995**

**ROBYN ELLIOTT
ACTING STATISTICIAN, NORTHERN TERRITORY**

CONTENTS

	Page
.. Introduction	1
.. Cautionary Note	1
.. Technical Notes	6
.. Developing Estimates of Resident Population for Statistical Local Areas	7
.. Community Government Councils and Incorporated Associations	8
.. Glossary	16
.. Related Publications	17
.. ABS Services	18

TABLES

Table 1	Estimated Resident Population, Community Government Councils, Northern Territory	3
Table 2	Estimated Resident Population, Incorporated Associations, Northern Territory	5

MAPS

Map 1	Community Government Councils	2
Map 2	Incorporated Associations	4

INQUIRIES

- *for further information about statistics in this publication and the availability of related unpublished statistics, contact Gary Childs on (08) 8943 2188 or any ABS State office.*
 - *for information about other ABS statistics and services, please refer to page 18.*
-

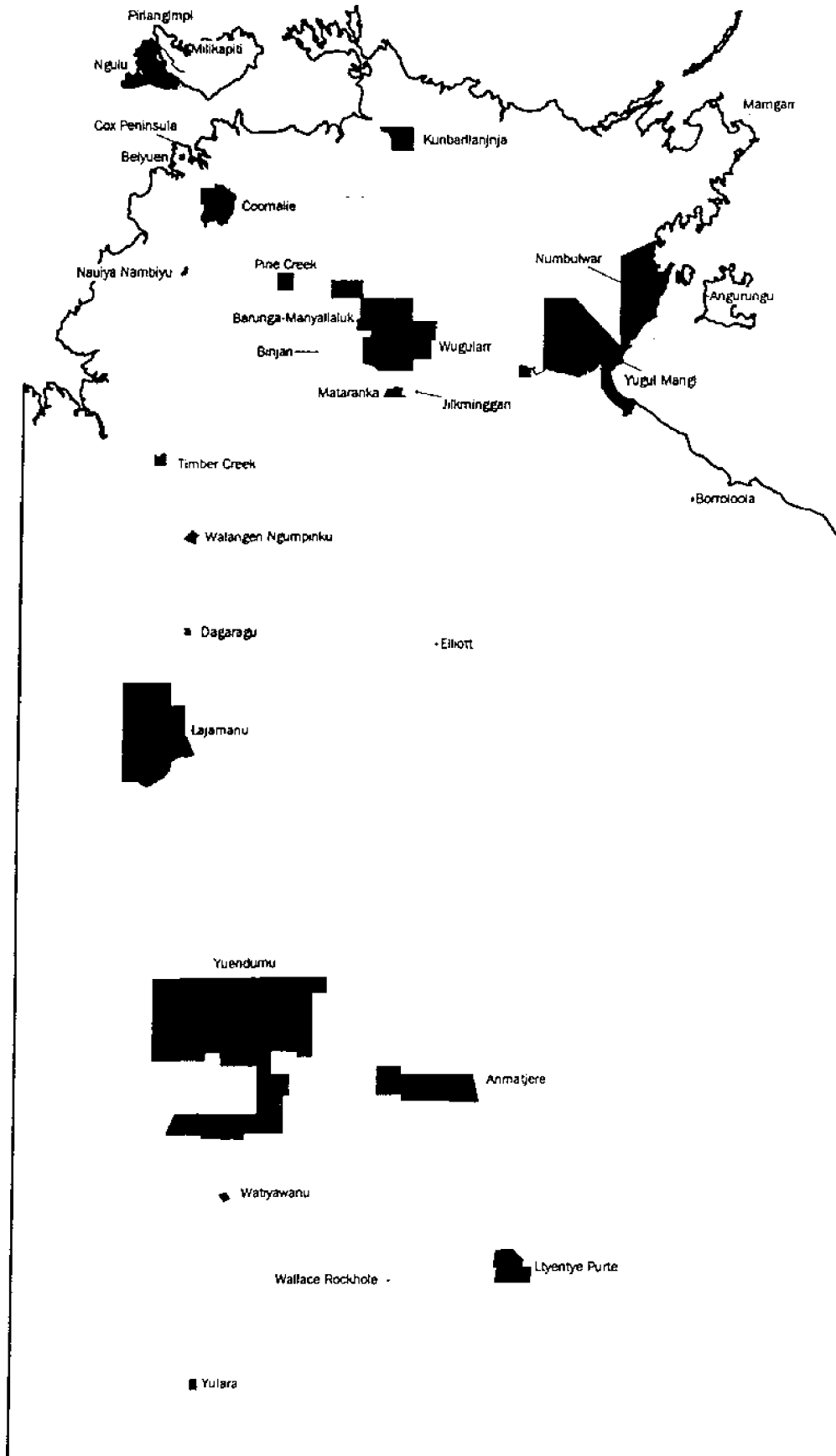
INTRODUCTION

- 1 This paper provides experimental estimated resident populations for Community Government Council and Incorporated Association areas in the Northern Territory and details the process used to derive these estimates. Community Government Councils and Incorporated Associations provide many of the services provided by Local Government Authorities (Municipal Government Councils) elsewhere in Australia.
- 2 The statistics are derived from 1991 Census data, taking into account estimates of population growth and movements over the intervening period. Local information on population numbers was also used in an attempt to verify the population estimates. Specific details relating to the processes used follow the main tables.
- 3 The ABS is very interested in feedback from users of these statistics. Users are invited to provide feedback to the ABS on any aspect of this publication including estimates for individual areas.
- 4 Following the release of 1996 Census data further details of the age and sex structure of the Community Government Councils and Incorporated Associations will be made available.
- 5 The mobile nature of the population between communities and outstations and changes to the boundaries of Community Government Councils and Incorporated Association areas may lead to fluctuations in population size on either a short term (seasonal) or long term basis. Care needs to be taken to ensure that any population estimates used correspond to the required geographic area and relevant demographic concepts (ie resident versus service versus visitor populations).

CAUTIONARY NOTE

Due to the experimental nature of the processes used to derive these estimates the information in this publication should be used with caution.

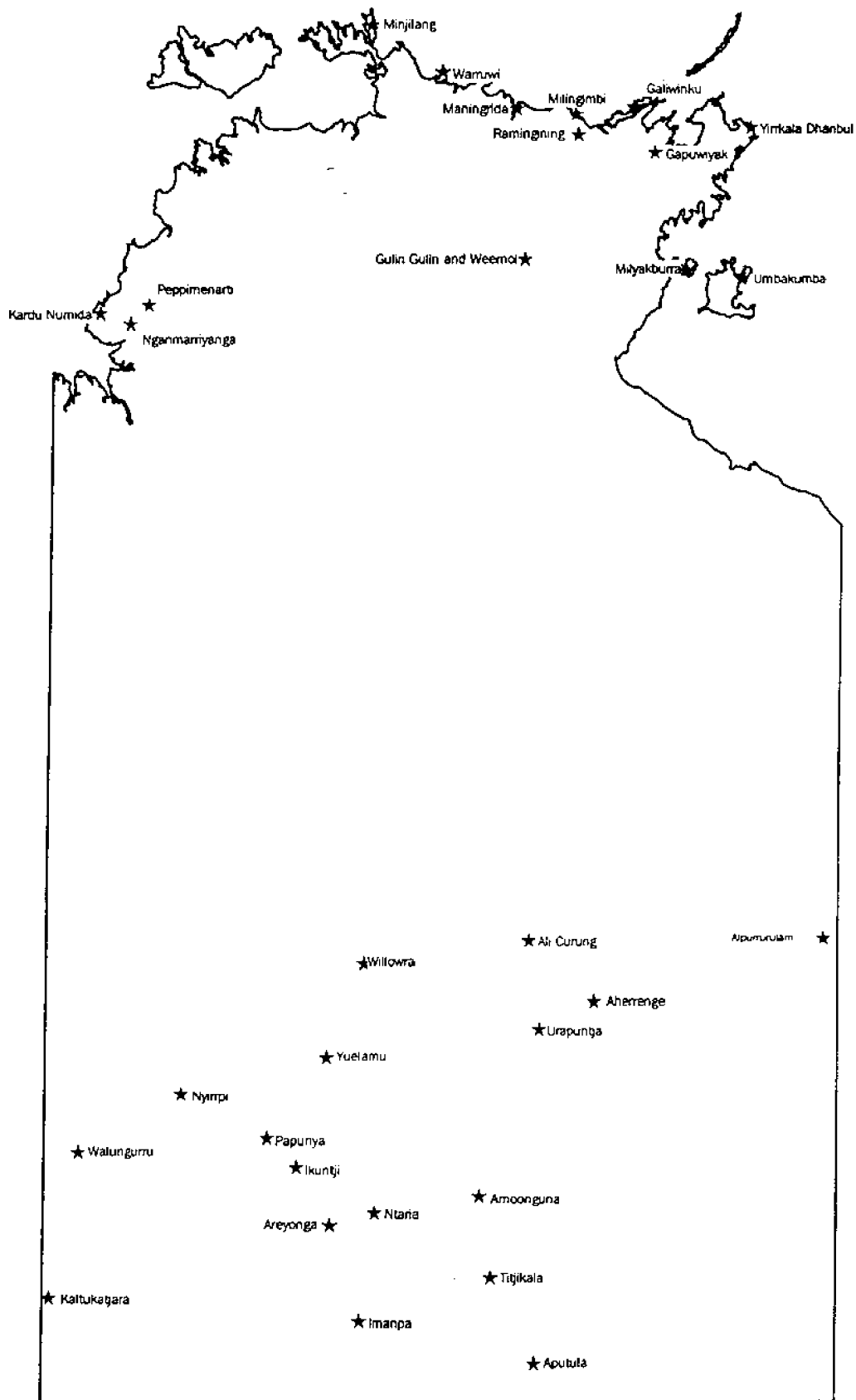
MAP 1 COMMUNITY GOVERNMENT COUNCILS, NORTHERN TERRITORY, 30 JUNE 1995



**TABLE 1 ESTIMATED RESIDENT POPULATION
COMMUNITY GOVERNMENT COUNCILS, NORTHERN TERRITORY**

<i>Community Government Council</i>	<i>June 1994</i>		<i>June 1995</i>		<i>Reference paragraph/s</i>
	<i>Total</i>	<i>Persons aged 15 and over</i>	<i>Total</i>	<i>Persons aged 15 and over</i>	
Angurugu	713	462	728	471	19
Anmatjere	1,203	845	1,231	864	20
Barunga-Manyallaluk	435	268	444	273	23
Belyuen	130	76	141	82	24
Binjari	177	133	181	136	25
Borrooloola	577	379	589	386	26
Coomalie	1,018	722	1,068	757	27
Cox Peninsula	n.a.	n.a.	n.a.	n.a.	28
Daguragu	571	342	584	349	29
Elliott District	470	322	481	334	30
Jilkminggan	n.a.	n.a.	n.a.	n.a.	36
Kunbarlanjinja	932	631	961	650	39
Lajamanu	618	377	632	385	40
Ltyentye Pute	450	273	463	280	41
Marngar	227	137	232	140	43
Mataranka	223	193	228	197	44
Milikapiti	431	287	444	295	45
Naiyu Nambyu	297	196	305	201	49
Nguiu	1,121	737	1,156	759	51
Numbulwar Numbunndi	487	333	497	339	53
Pine Creek	694	548	713	562	57
Pirlangimpi	292	195	301	201	58
Timber Creek	166	139	170	142	60
Wallace Rockhole	151	93	154	94	64
Watiyawanu	245	176	251	180	67
Wugularr	450	275	459	280	69
Yuendumu	913	642	934	656	72
Yugul Mangi	1,241	717	1,267	731	73
Yulara	954	655	983	674	74

MAP 2 INCORPORATED ASSOCIATIONS, NORTHERN TERRITORY, 30 JUNE 1995



**TABLE 2 ESTIMATED RESIDENT POPULATION
INCORPORATED ASSOCIATIONS, NORTHERN TERRITORY**

<i>Incorporated Association</i>	<i>June 1994</i>		<i>June 1995</i>		<i>Reference paragraph/s</i>
	<i>Total</i>	<i>Persons aged 15 and over</i>	<i>Total</i>	<i>Persons aged 15 and over</i>	
Aherrenge	214	139	220	142	15
Ali Curung	413	269	424	276	16
Alpururulam	346	204	355	209	17
Arnoonguna	168	106	173	109	18
Aputula	238	145	245	149	21
Areyonga	152	102	156	104	22
Galiwinku	1,239	705	1,265	719	31
Gapuwiyak	413	227	422	231	32
Gulin Gulin and Weemol	182	98	188	101	33
Ikuntji	81	41	83	42	34
Imanpa	115	83	118	85	35
Kaltukatjara	254	190	262	195	37
Kardu Numida	1,353	768	1,391	789	38
Maningrida	1,076	659	1,110	679	42
Milingimbi	828	490	845	499	46
Milyakburra	107	74	109	75	47
Minjilang	204	148	210	152	48
Nganmamiyanga	215	143	221	146	50
Ntaria	440	255	450	260	52
Nyiripi	257	172	263	175	54
Papunya	356	256	364	261	55
Peppimenarti	198	116	204	119	56
Ramingining	489	302	499	308	59
Titjikala	122	91	126	93	61
Umbakumba	373	221	381	225	62
Urapuntja	612	392	630	403	63
Walangurru	324	200	331	204	65
Waruwi	288	195	297	201	66
Wiilowra	352	208	360	212	68
Yirrkala Dhanbul	644	389	658	397	70
Yuelamu	126	84	129	85	71

TECHNICAL NOTES

MUNICIPAL COUNCILS

6 There are 6 municipal government councils in the Northern Territory (Darwin, Palmerston, Litchfield, Katherine, Tennant Creek and Alice Springs) and 2 special towns (Jabiru and Nhulunbuy) that provide local government services to the residents of defined areas. The ABS releases estimates of the resident population for these areas on an annual basis (*Estimated Resident Population, Northern Territory, Statistical Local Areas Cat No. 3201.7* and *Estimated Resident Population, Northern Territory, Statistical Local Areas by Age and Sex, Cat No. 3207.7*).

COMMUNITY GOVERNMENT COUNCILS

7 Community Government Councils (CGC) in the Northern Territory are legally constituted local government authorities providing local government services to the residents of the CGC. Each of the 31 CGCs is separately gazetted under the Northern Territory Local Government Act. The gazetted boundaries of CGCs are liable to change from time to time to include additional communities, camps, outstations and other areas for which the CGCs assume responsibility. There are currently 31 CGCs in the Northern Territory (*refer NT Local Government Directory, June 1996*). New CGCs may be created from existing Incorporated Associations or from resource centres which were not Incorporated Associations. The number of CGCs is expected to continue to grow and include more of the non-urban people of the NT as time passes.

INCORPORATED ASSOCIATIONS

8 Incorporated Associations (IA) are organisations that provide a more limited range of local government services to people living in a less well-defined area (ie no formally gazetted boundaries). There are currently 30 IAs providing local government type services in the NT (*refer NT Local Government Directory, June 1996*).

METHODOLOGY

9 An outline of the methodology for producing Estimated Resident Populations (ERP) for CGCs and IAs is included on page 8 of this publication. The experimental ERPs for each CGC and IA in this publication are separately derived from the normal ERP for Statistical Local Areas (SLA) process.

10 Initial estimates for the 1995 population of the CGCs and IAs were derived by increasing the 1994 estimate by the same rate as that for the SLA in which the CGC or IA is located.

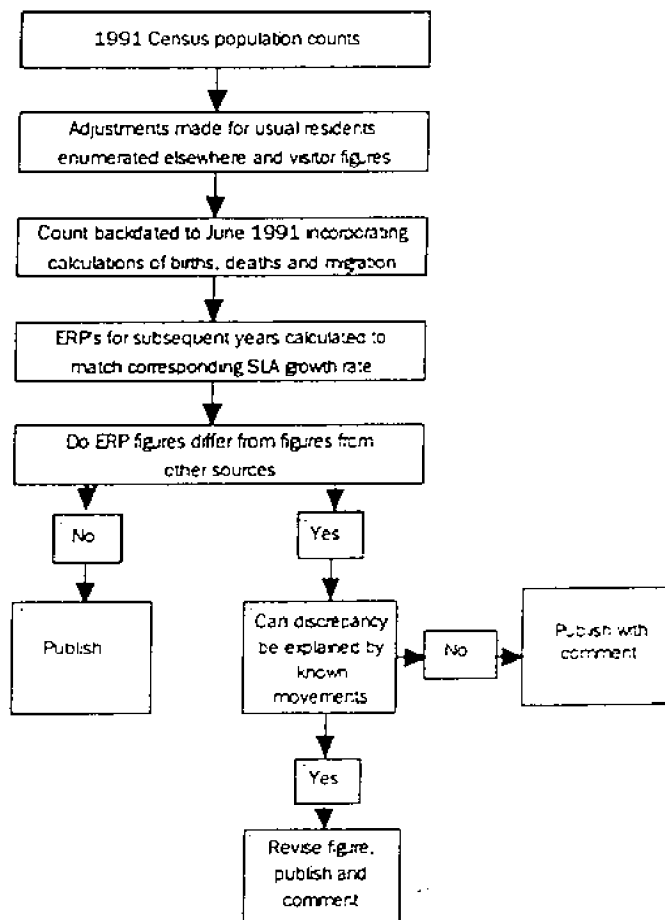
11 Where local information suggested significant population movements had occurred the figure derived above was changed as required if the movements could be confirmed.

12 The total population of CGCs and IAs in an SLA can not exceed the ERP for the SLA. It is not possible to develop detailed age and sex breakdowns of CGC and IA populations at this stage. Estimates for the number of persons aged 15 years and over have been developed assuming the proportion of people aged 15 years and over has remained constant since 1991.

CONSTRAINTS

13 These estimates only include people who are usually residents of a given CGC or IA. Short term and or, seasonal movements into or from a community are excluded. Service populations where people from outside the area use the services of the CGC or IA are also excluded.

14 The following flowchart illustrates the basic principle of developing estimates of resident population for Community Government Councils and Incorporated Associations. Further information regarding the methodology outlined below is available in *Population Estimates - Methodology and Sources of Data* (catalogue no. 3228.0).



- AREYONGA 22 The Areyonga Incorporated Association estimated resident population was derived using the standard estimation component only. A significant difference exists between the ABS 1995 estimate of 156 persons and the Northern Territory Government 1995 estimate of 196 persons. The availability of 1996 Census data is expected to clarify this discrepancy.
- BARUNGA-MANYALLALUK 23 The Elsey-Balance SLA contains the four CGCs of Wugular, Mataranka, Barunga-Manyallaluk, and Jilkminggan. Evidence suggests that there has been a great deal of movement between these CGCs in the past three to five years, with both Wugular and Barunga-Manyallaluk gaining population since the 1991 Census at the expense of Mataranka and Jilkminggan. Some of this movement has been the result of local factors at the time of the Census and some has been the result of longer term factors. To account for this population movement the bulk of population growth in the Elsey-Balance SLA since 1991 has been attributed proportionately to Barunga-Manyallaluk and Wugular.
- BELYUEN 24 The Belyuen CGC covers an area of 4 square kilometres and its estimated resident population was derived using the standard estimation component only. A significant difference exists between the ABS 1995 estimate of 141 persons and the Northern Territory Government 1995 estimate of 225 persons. The availability of 1996 Census data is expected to clarify this discrepancy.
- BINJARI 25 The Binjari CGC is 282 square kilometres and was included in Katherine SLA at the 1991 Census. Katherine had a relatively high proportion of visitors present at this time. Local information suggests that such a high rate of visitors would have been unlikely in Binjari. As a result, the Binjari 1991 Census count was not adjusted to a usual resident count. Local information also suggests a recent influx of 50 to 60 persons from other camps and outstations in the Katherine area in 1994 and 1995. Consequently, the 1994 estimate was adjusted by 50 persons.
- BORROLOOLA 26 The Borroloola CGC covers an area of 11 square kilometres around the town of Borroloola. The estimated resident population was derived using the standard estimation component only. A significant difference exists between the ABS 1995 estimate of 589 persons and the Northern Territory Government 1995 estimate of 744 persons. The availability of 1996 Census data is expected to clarify this discrepancy.
- COOMALIE 27 Detailed information on the population of the Coomalie CGC has been published by the ABS since 1991. It covers 1,500 square kilometres and is the only CGC for which published data is available from the 1991 Census.
- COX PENINSULA 28 There is no ABS information available for the CGCs of Cox Peninsula (gazetted May 1995) 562 square kilometres, and Jilkminggan (gazetted June 1995) 610 square kilometres. Local knowledge suggests a population of 200 to 250 persons in the Cox

Peninsula CGC. The Northern Territory Government estimates the 1995 populations of these CGCs as 231 and 170 respectively. Detailed population figures will be available for these CGCs following availability of 1996 Census data.

DAGURAGU

29 The Daguragu CGC estimated resident population was derived using the standard estimation component only. Daguragu CGC is 43 square kilometres and includes Daguragu and Kalkarindji; the community of Mistake Creek and the outstations of Liku, Mamadi, McDonalds Yard, Mt Maiyo and Puturang.

ELLIOTT DISTRICT

30 The Elliott District CGC covers 3 square kilometres and has gained people from surrounding areas since 1993 as a result of short term visitors staying on in the community. Evidence suggests an influx of about 150 people between 1991 and 1993 and a further 150 people in 1994 and 1995. Evidence also suggests that this growth came from within the Tableland SLA. As a result, an additional 150 persons were added to Elliott District CGC for the 1991 to 1994 period and a further 150 have been added to the 1995 estimate.

GALIWINKU

31 The Galiwinku Incorporated Association estimated resident population was derived using the standard estimation component only.

GAPUWIYAK

32 The Gapuwiyak Incorporated Association estimated resident population was derived using the standard estimation component only. A significant difference exists between the ABS 1995 estimate of 422 persons and the Northern Territory Government 1995 estimate of 631 persons. The availability of 1996 Census data is expected to clarify this discrepancy.

GULIN GULIN AND WEEMOL

33 The Gulin Gulin and Weemol Incorporated Association estimated resident population was derived using the standard estimation component only. The communities of Bulman and Weemol are included in this Incorporated Association. A significant difference exists between the ABS 1995 estimate of 188 persons and the Northern Territory Government 1995 estimate of 286 persons. The availability of 1996 Census data is expected to clarify this discrepancy.

IKUNTJI

34 The Ikuntji Incorporated Association estimated resident population was derived using the standard estimation component only. Ikuntji includes the community of Haasts Bluff.

IMANPA

35 The Imanpa Incorporated Association is in the Petermann SLA. The Census data for Petermann SLA was affected by a large number of visitors, most of whom came from Yulara. The adjustment of the Imanpa census count to a usual resident population was based on data for the neighbouring SLA of Sandover-Balance rather than the visitor dominated Petermann SLA values. A significant difference exists between the ABS 1995 estimate of 118 persons and the Northern Territory

Government 1995 estimate of 158 persons. The availability of 1996 Census data is expected to clarify this discrepancy.

JILKMINGGAN

36 Jilkminggan is in the Elsey-Balance SLA, which has experienced notable shifts in population amongst a number of communities in the past three to five years. It covers 610 square kilometres and local information suggests a population of 150 to 200 persons in this CGC. 1991 census field officer details were not available but the 1992 ATSIIC Housing and Community Infrastructure Needs Survey estimated the Jilkminggan population at 150 persons. The Northern Territory Government estimates the 1995 population at 170 persons. The availability of 1996 Census data is expected to clarify this discrepancy.

KALTUKATJARA

37 The Kaltukatjara Incorporated Association is in the Petermann SLA. Kaltukatjara is the major community within this Incorporated Association with 22 smaller communities being included. The Census data for Petermann SLA was affected by high visitor numbers, most of whom can be attributed to Yulara. The adjustment of the Kaltukatjara census count to a usual resident population was based on data for the neighbouring SLA of Sandover-Balance rather than the visitor dominated Petermann SLA values.

KARDU NUMIDA

38 The Kardu Numida Incorporated Association is based at Wadeye. The estimated resident population for Kardu Numida was derived using the standard estimation component only.

KUNBARLLANJJA

39 The Kunbarllanjja CGC covers 869 square kilometres and its estimated resident population was derived using the standard estimation component only. Kunbarllanjja includes the community of Oenpelli.

LAJAMANU

40 The Lajamanu CGC is 7,313 square kilometres and its estimated resident population was derived using the standard estimation component only.

LTYENTYE PURTE

41 The Ltyentye Purte CGC is based at Santa Teresa. The estimated resident population for Ltyentye Purte was derived using the standard estimation component only.

MANINGRIDA

42 The Maningrida Incorporated Association estimated resident population was derived using the standard estimation component only. Maningrida Incorporated Association includes the communities of Maningrida, Nadilimuk and Naqarla.

MARNGARR

43 The Marngarr CGC covers 3 square kilometres and is based on the community of Gulyangara and outstation of Galupa. The estimated resident population for Marngarr was derived using the standard estimation component only.

YUELAMU

71 The Yuelamu Incorporated Association estimated resident population was derived using the standard estimation component only. Yuelamu Incorporated Association includes the communities of Dons Bore, Pulardi and Yuelamu. A significant difference exists between the ABS 1995 estimate of 129 persons and the Northern Territory Government 1995 estimate of 174 persons. The availability of 1996 Census data is expected to clarify this discrepancy.

YUENDUMU

72 The Yuendumu CGC includes the communities and outstations of Injirramurri, Putulu, Yuwerli, Tjulpungu, Watililinypa, Yatjala, Yumurrpa, Walkalba, Chilla Well and Yuendumu. The Yuendumu CGC is the largest CGC covering an area of approximately 22,000 square kilometres. The 1991 Census count for Yuendumu was adjusted to 875 persons to account for the nearby communities and outstations.

YUGUL MANGI

73 The Yugul Mangi CGC covers 12,269 square kilometres and includes the communities of Ngukkur, Rittarangu, Yutpundi-Djindiwrriji, Bringung, Hodgson Downs, Wunooril and Cox River; as well as the outstations of Awumbunyji, Boomerang Lagoon, Buddawarka, Costello, Jowar, Lake Katherine, Larmpayanji, Mumbo Mumbo, Nallawan, Namaliwirri, Ruined City, Turkey Lagoon and Wanmarri. The Yugul Mangi CGC 1991 census count included 794 persons for Ngukkur and 382 for the other communities (1,176 persons in total).

YULARA

74 The bulk of visitors recorded at the 1991 Census in the Petermann SLA can be attributed to the Ayers Rock Resort which is located within the Yulara CGC. The usual resident 1991 Census estimation was adjusted to account for a higher proportion of visitors in Yulara than elsewhere in the Petermann SLA.

GLOSSARY

AUSTRALIAN STANDARD GEOGRAPHIC CLASSIFICATION	The Australian Standard Geographic Classification (ASGC) is the hierarchical structured classification used by the ABS to classify geographic areas within Australia (Catalogue no 1216.0).
CENSUS COUNTS, PLACE OF USUAL RESIDENCE	Census Counts, Place of Usual Residence include all people who are usual residents of a given location regardless of where they were on Census day.
CENSUS COUNTS, PLACE OF ENUMERATION	Census Counts, Place of Enumeration include all people who were counted in a given location irrespective of whether they are usual residents or visitors.
COLLECTION DISTRICT (CD)	Collection Districts (CD) are the smallest geographic area for which the ABS releases data and form the basic building blocks of the ASGC. Collection Districts cover the whole country without gaps or overlaps.
COMMUNITY GOVERNMENT COUNCIL (CGC)	Community Government Councils are legally constituted local government authorities with roles and responsibilities similar to that of local government municipal councils. Community Government Councils need not necessarily form a single contiguous area and may comprise a number of discrete parcels of land. CGCs do not cover the whole of the Northern Territory and do not overlap.
ESTIMATED RESIDENT POPULATION (ERP)	Estimated Resident Populations (ERP) are estimates of the number of people who usually live in a community. Individuals are regarded as usual residents of only one community at any given time.
INCORPORATED ASSOCIATION (IA)	Incorporated Associations (IA) are legally constituted bodies performing some of the roles and responsibilities of local government municipal councils. They differ from Community Government Councils in not having clearly defined boundaries. Incorporated Areas do not cover the whole of the Northern Territory and do not overlap.
LOCAL GOVERNMENT AREAS (LGA)	Local Government Areas (LGA) are the areas gazetted under the Northern Territory <i>Local Government Act</i> . The ABS defines SLAs to fit entirely within LGA boundaries.
SERVICE POPULATION	Service Populations include the usual residents of an area plus residents from other areas who make use of the services provided by the central community. For example, the usual resident population of Nhulunbuy covers those people who usually live in the town of Nhulunbuy. The service population for the Nhulunbuy hospital may also include all of Arnhem Land plus Groote Eylandt. Service populations for communities and towns may vary depending on the services being considered.
STATISTICAL LOCAL AREA (SLA)	Statistical Local Areas consist of one or more collection districts. SLAs cover the whole country without gaps or overlaps. One or more SLAs combine to cover the entire area of each Local Government Area.
VISITOR POPULATION	Visitor Populations include tourists, business travellers, family and friends who are not usual residents of the community. Visitor populations often fluctuate during the year.

RELATED PUBLICATIONS

Estimated Resident Population, Northern Territory, for Statistical Local Area (Cat. No. 3201.7)

Estimated Resident Population by Age, Sex and Statistical Local Area, Northern Territory (Cat. No. 3207.7)

Demography, Northern Territory (Cat. No. 3311.7)

Northern Territory Indigenous Demography, Selected Statistics (Cat. No. 3316.7)

Population Estimates - Methodology and Sources of Data (Cat. No. 3228.0)

SYMBOLS

n.a. not available

For more information . . .

The ABS publishes a wide range of statistics and other information on Australia's economic and social conditions. Details of what is available in various publications and other products can be found in the ABS Catalogue of Publications and Products available from all ABS Offices.

ABS Products and Services

Many standard products are available from ABS bookshops located in each State and Territory. In addition to these products, information tailored to the needs of clients can be obtained on a wide range of media by contacting your nearest ABS Office. The ABS also provides a Subscription Service for standard products and some tailored information services.

National *Dial-a-Statistic* Line

0055 86 400

Steadycom P/L: premium rate 25c/21.4 secs.

This number gives 24-hour access, 365 days a year, for a range of important economic statistics including the CPI.

Internet

<http://www.statistics.gov.au>

A wide range of ABS information is available via the Internet, with basic statistics available for each State, Territory and Australia. We also have Key National Indicators, ABS product release details and other information of general interest.

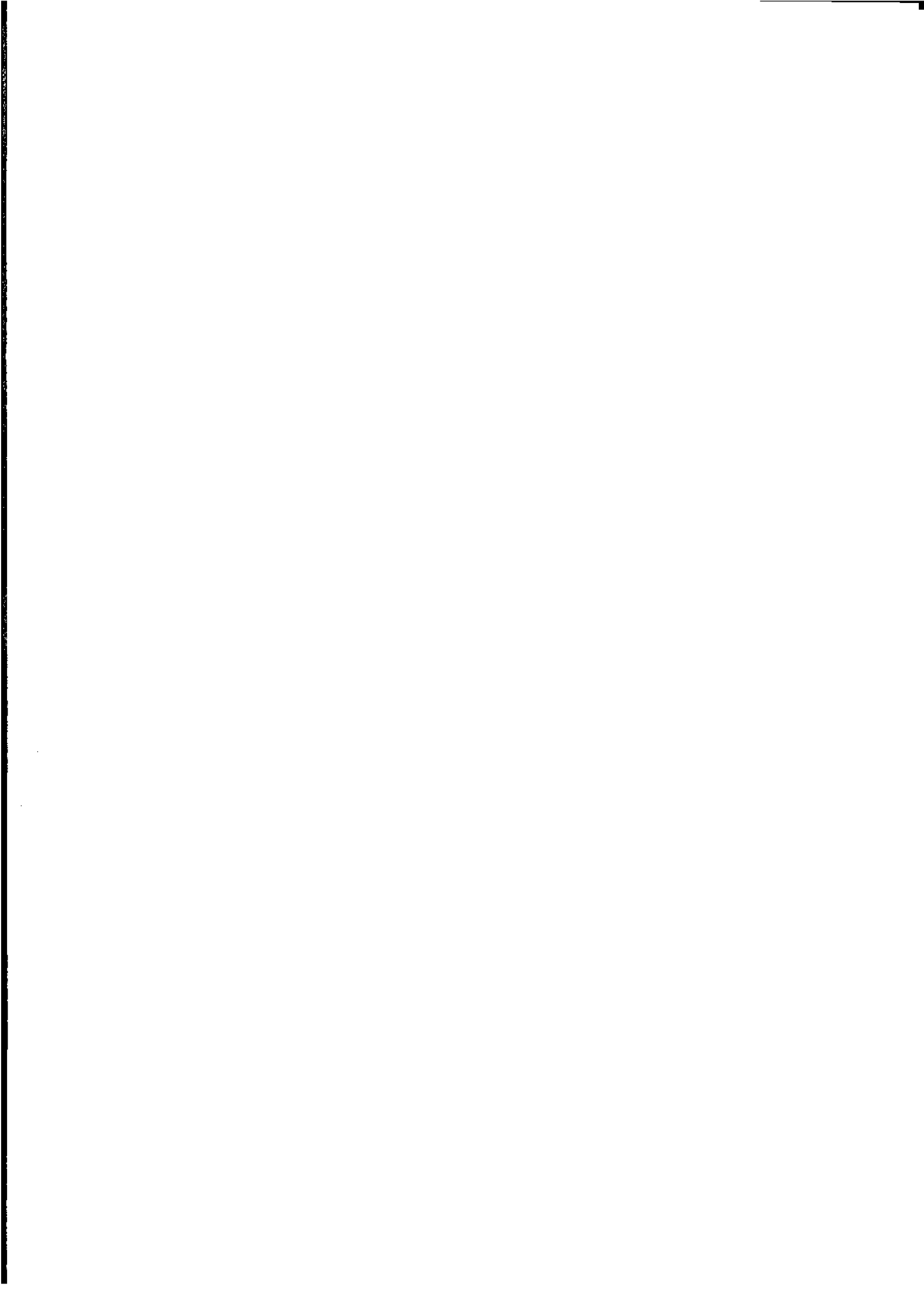
Sales and Inquiries

Keylink STAT.INFO/ABS
X.400
(C:Australia,PUB:Telememo,O:ABS,FN:STAT,SN:INFO)
Internet stat.info@abs.telememo.au

National Mail Order Service (06) 252 5249
Subscription Service 1800 02 0608

	Information Inquiries	Bookshop Sales
SYDNEY	(02) 9268 4611	(02) 9268 4620
MELBOURNE	(03) 9615 7755	(03) 9615 7755
BRISBANE	(07) 3222 6351	(07) 3222 6350
PERTH	(09) 360 5140	(09) 360 5307
ADELAIDE	(08) 8237 7100	(08) 8237 7582
CANBERRA	(06) 252 6627	(06) 207 0326
HOBART	(03) 6220 5800	(03) 6220 5800
DARWIN	(08) 8943 2111	(08) 8943 2111

Client Services, ABS, GPO Box 3796, DARWIN 0801
5th Floor, 81 Smith St, DARWIN 0800



© Commonwealth of Australia 1996

Recommended retail price: \$14.00



2323370001957
ISSN 1327-4481