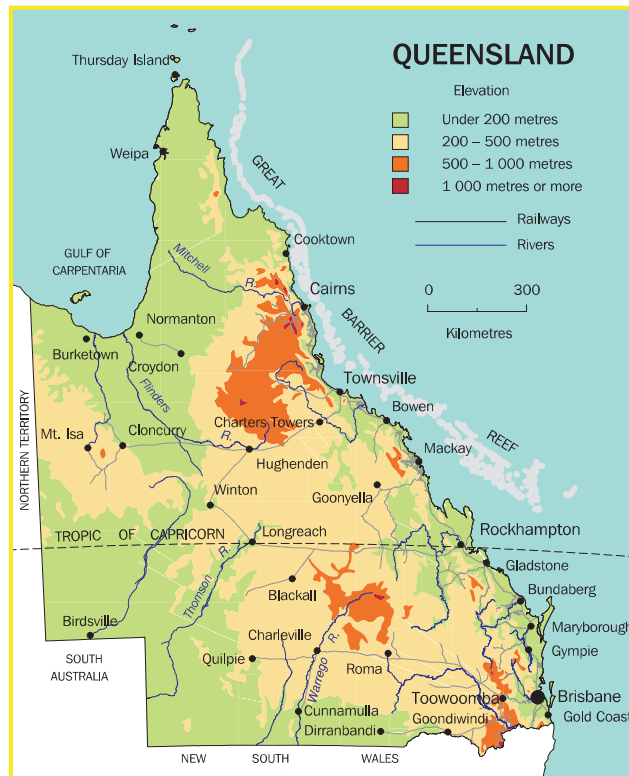


Situated generally between 10° and 29° south latitude and between 138° and 154° east longitude, Queensland occupies the north-eastern portion of the Australian continent. The coastline extends for 13,350 kilometres, including islands (6,970 kilometres on the mainland). Of the total area — 1,734,190 square kilometres — just over half is north of the Tropic of Capricorn. Of the six states of the Commonwealth, Queensland ranks second in area and third in population.

Queensland is a constituent state of the Commonwealth of Australia, and observes the Australian Constitution. While returning elected members to both upper and lower houses of the Federal Parliament, Queensland is unique in that its own State Parliament has only one house — the House of Representatives. Local government derives its powers from Acts passed by the State Parliament. The capital city is Brisbane.

Figures in this publication are subject to revision.



Source: AUSLIG 1996.

QUEENSLAND AND PROPORTION OF AUSTRALIA

Area	sq km	Date or period	Queensland	%
		1 July 2001	1 734 190	22.5
Population	'000	30 June 2002	3 708.7	18.8
Births	'000	2001–02	47.5	19.3
Natural increase	'000	2001–02	24.3	21.0
Cause of death — melanoma of skin	no.	2001	218	20.4
Agricultural production				
Beef and veal	tonnes	2001–02	977 601	48.1
Mutton and lamb	tonnes	2001–02	36 652	5.7
Sugar cane(a)	'000 tonnes	2000–01	25 867	92.0
Tobacco	tonnes	2000–01	2 485	41.4
Mining, value added(b)	\$m	2000–01	5 599.0	17.0
Manufacturing sales and service income	\$m	2000–01	40 292.3	16.0
New houses completed	no.	2001–02	21 624	22.6
Foreign merchandise imports	\$m	2001–02	14 217.3	11.9
Foreign merchandise exports	\$m	2001–02	23 146.1	19.1
New motor vehicle sales(c)	'000	2001–02	144.4	18.0
Retail trade, turnover(d)	\$m	2001–02	30 935.9	18.8
Takings from accommodation(e)	\$m	2001–02	1 254.9	26.4
Industrial disputes(f)	no.	2001–02	105	14.8
Working days lost(f)	'000	2001–02	42.7	15.3
Average earnings(g)			2001	2002
Average weekly earnings of employees				
	Males		\$747.90	\$770.90
	Females		\$518.60	\$511.00
(a) Cut for crushing. (b) Excluding ANZSIC subdivision 15 (Services to Mining). (c) Excluding motor cycles, plant, equipment and unpowered vehicles. (d) Excluding motor vehicle dealers, petrol stations, etc. (e) Hotels, motels and guest houses with facilities and serviced apartments. Establishments with 15 or more rooms or units. (f) Twelve months ending August 2002. (g) August quarter.				

CLIMATIC DATA, BRISBANE

Month		2001	2002		
		Dec	Mar	Jun	Sep
Mean daily maximum	°C	29.3	28.5	22.0	24.8
Mean daily minimum	°C	20.7	18.8	9.9	13.1
Rainfall, total	mm	77.6	57.8	67.8	21.6
Rain days	no.	8	10	8	6
Mean daily sunshine	hours	8.3	8.8	6.8	9.5
Windy days, over 63 km/h	no.	—	—	—	2

AGRICULTURE(a)		1999-2000(b)	2000-01(b)
Agricultural establishments(c)	no.	30 367	29 643
Area	'000 ha	145 420	140 516
Total area of crops	'000 ha	3 130	2 955
Agricultural production			
Sugar cane cut for crushing	'000 tonnes	35 316	25 867
Wheat	'000 tonnes	1 904	1 157
Barley	'000 tonnes	254	115
Grain sorghum	'000 tonnes	1 308	1 156
Sunflower seed	'000 tonnes	108	57
Tobacco	'000 kg	3 592	2 485
Peanuts	'000 tonnes	39	37
Pineapples	'000 tonnes	139	120
Bananas	'000 tonnes	207	302
Citrus fruit	'000 tonnes	84	75
Avocados	tonnes	14 803	20 689
Mangoes	tonnes	30 770	28 233
Livestock			
Meat cattle	'000	11 503	11 008
Milk cattle	'000	305	288
Sheep and lambs	'000	9 195	8 660
Pigs	'000	544	597
Brokers and dealers receipts of taxable wool	'000 kg	45 660	52 590
Value of agricultural production	\$m	6 771	7 250
Crops	\$m	3 557	3 391
Livestock disposals	\$m	2 668	3 368
Livestock products	\$m	546	490
(a) Establishments with an estimated value of agricultural operations of \$5,000 or more. (b) Year ended 30 June. (c) At 30 June.			

BUILDING		2000-01	2001-02
Dwelling units completed(a)	no.	25 045	30 863
New houses	no.	16 316	21 624
New other residential buildings	no.	8 504	8 869
Value of building work completed	\$m	5 891	7 415
New houses	\$m	2 270	3 017
New other residential buildings	\$m	921	1 174
Alterations and additions to residential buildings	\$m	401	525
Non-residential building	\$m	2 299	2 700
Value of work done during year	\$m	5 962	7 380
(a) Including conversions.			

CONSUMER PRICE INDEX, BRISBANE(a)		2000-01	2001-02
Food	no.	134.7	143.6
Alcohol and tobacco	no.	194.3	202.3
Clothing and footwear	no.	107.5	106.5
Housing	no.	112.5	114.8
Household furnishings, supplies and services	no.	120.4	122.3
Health	no.	158.4	165.5
Transportation	no.	135.1	136.9
Communication	no.	107.8	108.4
Recreation	no.	124.7	127.7
Education	no.	209.5	219.8
Miscellaneous	no.	168.7	178.2
All groups	no.	132.4	136.3
(a) Base of each index: Year 1989-90 = 100.0.			

CRIME AND JUSTICE

		1999–2000	2000–01
Total police strength at 30 June(a)	no.	7 700	8 082
Proven offences in Children's Courts	no.	20 429	20 073
Summary convictions in Magistrates Courts(b)	no.	131 868	149 461
Convictions in higher courts	no.	5 740	5 329

(a) Including recruits in training. (b) Excluding ticketable offences processed through the electronic court.

DEMOGRAPHY

		2000	2001
Estimated resident population 30 June			
Queensland	'000	3 570	3 635
Brisbane Statistical Division	'000	1 627	1 657
Bundaberg Statistical District	'000	56	57
Gladstone Statistical District	'000	39	39
Gold Coast–Tweed (Queensland component)	'000	366	379
Rockhampton Statistical District	'000	64	63
Sunshine Coast Statistical District	'000	180	186
Townsville Statistical District	'000	132	135
Major centres — ERP(a)			
Brisbane City (state capital)	'000	882	900
Cairns City	'000	123	124
Gold Coast City	'000	405	418
Hervey Bay City	'000	43	44
Ipswich City	'000	127	129
Logan City	'000	168	169
Mackay City	'000	77	78
Redcliffe City	'000	50	51
Toowoomba City	'000	88	88
Age groups (proportion of Queensland ERP at 30 June)			
0–14 years	%	21.1	21.3
15–19 years	%	7.4	7.3
20–64 years	%	60.1	59.8
65 years or more	%	11.5	11.6
Vital statistics			
Births	no.	46 730	47 691
Rate per 1,000 mean population		13.1	13.1
Deaths	no.	22 279	22 857
Rate per 1,000 mean population		6.2	6.3
Marriages	no.	22 842	20 314
Rate per 1,000 mean population		6.4	5.6

(a) Local government areas.

EDUCATION

		2000	2001
<i>Schools, August</i>	<i>no.</i>	<i>1 718</i>	<i>1 721</i>
Government	no.	1 297	1 293
Non-government	no.	421	428
<i>Students, August</i>	<i>'000</i>	<i>607.5</i>	<i>615.5</i>
Government	'000	434.8	439.6
Non-government	'000	172.7	175.9

EXTERNAL MERCHANDISE TRADE

		2000-01	2001-02
Exports			
Foreign, total	\$m	21 472	23 139
Interstate, total	\$m	7 379	8 340
Imports			
Foreign, total	\$m	13 782	14 218
Interstate, total	\$m	18 163	19 190

RETAIL TRADE

		2000-01	2001-02
Turnover, total(a)	\$m	29 041	30 936
(a) Excluding motor vehicles, parts, petrol, etc.			

STATE GOVERNMENT FINANCE

		1999-2000	2000-01
Total GFS expenses	\$m	22 671	23 677
Total GFS revenue	\$m	23 866	23 149

LABOUR FORCE

		2001	2002
Civilian labour force, October	'000	1 869.2	1 906.6
Employed	'000	1 725.9	1 779.2
Males	'000	961.9	987.9
Females	'000	764.0	791.3
Unemployed	'000	143.3	127.4
Unemployment rate	%	7.7	6.7
Participation rate	%	65.1	65.0

MANUFACTURING

		1999-2000	2000-01
Employment at 30 June(a)	'000	148.0	152.7
Sales and service income	\$m	36 327	40 292
(a) Including working proprietors.			

MINING

		1999-2000	2000-01
Establishments operating during the year(a)	no.	119	n.a.
Employment at 30 June	no.	15 368	18 377
Value at mine	\$m	8 024	10 913
Black coal (saleable)	'000 tonnes	124 348	138 352
Bauxite(b)	'000 tonnes	11 546	11 731
Copper (content)	'000 tonnes	413	459
Gold (content)	kg	30 619	33 476

(a) Metal ore, coal and oil and gas extraction. (b) Including beneficiated and calcined bauxite.

Source: Department of Natural Resources and Mines.

TOURIST ACCOMMODATION

		2001	2002
Licensed hotels with facilities			
Establishments at 30 June	no.	167	170
Takings from accommodation(a)	\$m	622.6	622.4
Number of guest rooms at 30 June	'000	20.5	20.8
Room nights occupied(a)	'000	4 703	4 642
Room occupancy rate(a)	%	62.7	61.1
Motels and guest houses with facilities			
Establishments at 30 June	no.	513	513
Takings from accommodation(a)	\$m	299.0	311.7
Number of guest rooms at 30 June	'000	18.3	18.4
Room nights occupied(a)	'000	3 732	3 844
Room occupancy rate(a)	%	55.6	57.0
Serviced apartments			
Establishments at 30 June	no.	274	286
Takings from accommodation(a)	\$m	287.3	320.8
Number of guest rooms at 30 June	'000	13.4	13.6
Room nights occupied(a)	'000	2 823	3 124
Room occupancy rate(a)	%	57.6	62.3
(a) Twelve months ended 30 June.			

TRANSPORT

		2000-01	2001-02
New motor vehicles sales(a)	'000	140.3	144.4
State railways			
Passenger journeys	'000	45 739	46 523
Freight carried	'000 tonnes	145 645	153 449
Total earnings	\$m	2 572.0	2 187.8

(a) Excluding motor cycles, plant, equipment and unpowered vehicles.

SYMBOLS AND ABBREVIATIONS USED

°C	— degrees Celsius	n.a.	— not available
\$m	— dollar millions	no.	— number
ERP	— Estimated resident population	%	— per cent
kg	— kilograms	sq km	— square kilometres
mm	— millimetres	'000	— thousand
—	— nil or rounded to zero		

ACKNOWLEDGMENTS

ABS publications draw extensively on information provided freely by individuals, businesses, governments and other organisations. Their continued cooperation is very much appreciated; without it the wide range of statistics published by the ABS would not be available for general use by the community. Information received by the ABS is treated in strict confidence as required by the *Census and Statistics Act 1905*.

Cover: Cooktown orchid, Queensland's floral emblem

Photo: *Queensland Tourist and Travel Corporation*

FOR MORE INFORMATION...

<i>INTERNET</i>	www.abs.gov.au The ABS web site is the best place to start for access to summary data from our latest publications, information about the ABS, advice about upcoming releases, our catalogue, and Australia Now—a statistical profile.
<i>LIBRARY</i>	A range of ABS publications is available from public and tertiary libraries Australia-wide. Contact your nearest library to determine whether it has the ABS statistics you require, or visit our web site for a list of libraries.
<i>CPI INFOLINE</i>	For current and historical Consumer Price Index data, call 1902 981 074 (call cost 77c per minute).
<i>DIAL-A-STATISTIC</i>	For the latest figures for National Accounts, Balance of Payments, Labour Force, Average Weekly Earnings, Estimated Resident Population and the Consumer Price Index call 1900 986 400 (call cost 77c per minute).

INFORMATION SERVICE

Data that is already published and can be provided within five minutes is free of charge. Our information consultants can also help you to access the full range of ABS information—ABS user pays services can be tailored to your needs, time frame and budget. Publications may be purchased. Specialists are on hand to help you with analytical or methodological advice.

<i>PHONE</i>	1300 135 070
<i>EMAIL</i>	client.services@abs.gov.au
<i>FAX</i>	1300 135 211
<i>POST</i>	Client Services, ABS, GPO Box 796, Sydney 1041

WHY NOT SUBSCRIBE?

ABS subscription services provide regular, convenient and prompt deliveries of ABS publications and products as they are released. Email delivery of monthly and quarterly publications is available.

<i>PHONE</i>	1300 366 323
<i>EMAIL</i>	subscriptions@abs.gov.au
<i>FAX</i>	(03) 9615 7848
<i>POST</i>	Subscription Services, ABS, GPO Box 2796Y, Melbourne 3001



2131230001036
ISSN 0157-3713

© Commonwealth of Australia 2003

.....
Produced by the Australian Bureau of Statistics